

200-355

Number: 200-355
Passing Score: 800
Time Limit: 120 min
File Version: 8.0



VCE to PDF Converter : <https://vceplus.com/vce-to-pdf/>

Facebook: <https://www.facebook.com/VCE.For.All.VN/>

Twitter : https://twitter.com/VCE_Plus

Google+ : <https://plus.google.com/+Vcepluscom>

LinkedIn : <https://www.linkedin.com/company/vceplus>

200-355

Implementing Cisco Wireless Network Fundamentals

Exam A

QUESTION 1

In the current RF environment, the noise floor is -95 dBm. A tablet needs an SNR of 25 dB to transmit at the required speed. What must the RSSI cell edge be to meet the required SNR?

- A. -120 dBm
- B. -90 dBm
- C. -70 dBm
- D. -60 dBm
- E. -50 dBm

Correct Answer: C

Section: (none)

Explanation

Explanation/Reference:

Explanation:

QUESTION 2

An access point is currently transmitting at 4 mW. The customer needs to increase its signal strength by 6 dB to create a larger wireless cell. What should the new transmit power be?

- A. 8 mW
- B. 10 mW
- C. 12 mW
- D. 16 mW
- E. 24 mW

Correct Answer: D

Section: (none)

Explanation

Explanation/Reference:

Explanation:

QUESTION 3

A wireless engineer is designing the wireless networking for a company with offices in two different locations. Which two regulatory bodies should they check to find the maximum EIRP allowed? (Choose two.)

- A. IEEE
- B. FCC
- C. ITU-R
- D. ETSI
- E. Wi-Fi Alliance

Correct Answer: BD

Section: (none)

Explanation

Explanation/Reference:

Explanation:

QUESTION 4

After installing a Cisco 5508 Wireless Controller using the default settings, how often will the RRM update occur?

- A. 30 seconds
- B. 60 seconds
- C. 300 seconds
- D. 600 seconds
- E. 3600 seconds
- F. 7200 seconds

Correct Answer: D

Section: (none)

Explanation

Explanation/Reference:

Explanation:

QUESTION 5

A customer has requested a single point of policy enforcement for LAN and WLAN. Which deployment model should be used?

- A. converged
- B. autonomous
- C. FlexConnect
- D. centralized

Correct Answer: A

Section: (none)

Explanation

Explanation/Reference:

Explanation:

QUESTION 6

A customer has asked for the proper port configuration to allow for LAG on a Cisco 2504 Wireless Controller to a Cisco IOS switch. Which EtherChannel mode should be used on the switch to allow for the WLC to connect?

- A. on
- B. auto
- C. desirable
- D. passive
- E. active

Correct Answer: A

Section: (none)

Explanation

Explanation/Reference:

Explanation:

QUESTION 7

A customer has asked for its wireless equipment to be managed as securely as possible. Which three management protocols will provide encrypted access to the equipment? (Choose three.)

- A. Secure Shell
- B. HTTPS
- C. SNMPv3
- D. Telnet
- E. SNMPv2c
- F. HTTP

Correct Answer: ABC

Section: (none)

Explanation

Explanation/Reference:

Explanation:

QUESTION 8

When deploying a Cisco Cloud Wireless Infrastructure, what two destination ports must be open? (Choose two.)

- A. TCP/5246
- B. UDP/5246
- C. TCP/5247
- D. UDP/5247
- E. TCP/7351
- F. UDP/7351
- G. TCP/7734
- H. UDP/7734

Correct Answer: FG

Section: (none)

Explanation

Explanation/Reference:

Explanation:

QUESTION 9

A help desk engineer is attempting to perform a remote packet capture on the wireless network. Which access point mode is necessary to perform this function?

- A. sniffer
- B. SE-Connect
- C. monitor
- D. rogue detector
- E. FlexConnect

Correct Answer: A

Section: (none)

Explanation

Explanation/Reference:

Explanation:

QUESTION 10

Refer to the exhibit.

General	Security	QoS	Policy-Mapping
Quality of Service (QoS)			
		Gold (video)	
Application Visibility		<input checked="" type="checkbox"/> Enabled	
AVC Profile		none	
Netflow Monitor		none	
WMM			
WMM Policy		Disabled	
7920 AP CAC		<input type="checkbox"/> Enabled	
7920 Client CAC		<input type="checkbox"/> Enabled	
Media Stream			
Multicast Direct		<input checked="" type="checkbox"/> Enabled	

A help desk ticket has been entered for the wireless infrastructure. A wireless client is not able to connect at IEEE 802.11n rates. Which option allows for connectivity?

- A. Set WMM mode to Optional or Required.
- B. Set Quality of Service (QoS) to Silver.
- C. Set Quality of Service (QoS) to Platinum.
- D. Set 7920 AP CAC to Enabled.

Correct Answer: A

Section: (none)

Explanation

Explanation/Reference:

Explanation:

QUESTION 11

An engineer has been asked to upgrade the FUS on the Wireless LAN controller. How can they monitor the status of the upgrade?

- A. WLC GUI
- B. WLC CLI
- C. WLC Console
- D. WLC Management in Prime Infrastructure

Correct Answer: C

Section: (none)

Explanation

Explanation/Reference:

Explanation:

QUESTION 12

During a wireless site survey, the signal strength drops significantly when outside of the room containing the access point. The building is made of wood and drywall. This is an example of which wireless anomaly?

- A. absorption
- B. refraction
- C. fading
- D. multipath
- E. reflection

Correct Answer: A

Section: (none)

Explanation

Explanation/Reference:

Explanation:

QUESTION 13

A wireless engineer has been asked to plan a deployment covering the aisles of a warehouse with optimal coverage while bleeding RF across aisles. Which antenna type provides the necessary coverage?

- A. patch
- B. omnidirectional
- C. Yagi
- D. parabolic dish

Correct Answer: A

Section: (none)

Explanation

Explanation/Reference:

Explanation:

QUESTION 14

Refer to the exhibit.

WLC Management Interface Configuration

Interface Address

VLAN Identifier	<input type="text" value="10"/>
IP Address	<input type="text" value="172.30.1.30"/>
Netmask	<input type="text" value="255.255.255.0"/>
Gateway	<input type="text" value="172.30.1.2"/>
IPv6 Address	<input type="text" value="::"/>
Prefix Length	<input type="text" value="128"/>
IPv6 Gateway	<input type="text" value="::"/>
Link Local IPv6 Address	<input type="text" value="fe80::d68c:b5ff:fec3:eef/64"/>

Physical Information

The interface is attached to a LAG.

Enable Dynamic AP Management ☒

DHCP Information

Primary DHCP Server	<input type="text" value="172.30.1.20"/>
Secondary DHCP Server	<input type="text" value="172.30.1.21"/>
DHCP Proxy Mode	<input type="text" value="Global"/>
Enable DHCP Option 82	<input type="checkbox"/>

Switchport Configuration

Current configuration : 235 bytes

```
!  
interface GigabitEthernet0/9  
  description 5508 Port 1  
  switchport trunk encapsulation dot1q  
  switchport trunk allowed vlan 1,20,30,40  
  switchport mode trunk  
  priority-queue out  
  mls qos trust dscp  
  spanning-tree portfast trunk  
end
```

The wireless engineer has deployed the Cisco 5508 Wireless Controller. The controller is responding on the service port; however, it will not respond on the management interface. Which configuration revision will fix the management interface?

- A. On the switch interface, configure switch(config-if)#switchport trunk allowed vlan add 10.
- B. On the WLC management interface, disable LAG on the management network.
- C. On the switch interface, configure switch(config-if)#switchport trunk allowed vlan 10.
- D. On the WLC management interface, change the VLAN ID to 20.
- E. On the switch interface, configure no spanning-tree portfast trunk.
- F. On WLC Controller > General, disable LAG and reboot.

Correct Answer: A

Section: (none)

Explanation

Explanation/Reference:

Explanation:

QUESTION 15

A help desk ticket states that a wireless access point has not joined its controller and is flashing rapidly. How can the help desk administer the access point with the default settings?

- A. console
- B. SSH
- C. Telnet
- D. HTTP
- E. HTTPS

Correct Answer: A

Section: (none)

Explanation

Explanation/Reference:

Explanation:

QUESTION 16

After you configure the Cisco 5508 Wireless Controller v7.6, a customer requests an SSID that allows for client web authentication with email input. Which authentication method should be used?

- A. pass-through
- B. authentication
- C. splash page web redirect

- D. conditional web redirect
- E. on MAC filter failure

Correct Answer: A

Section: (none)

Explanation

Explanation/Reference:

Explanation:

QUESTION 17

Which two principles must be considered when deploying a wireless network through a wooded area? (Choose two.)

- A. absorption
- B. reflection
- C. diffraction
- D. scattering
- E. refraction

Correct Answer: AD

Section: (none)

Explanation

Explanation/Reference:

Explanation:

QUESTION 18

What is an interferer that an engineer may see in Cisco CleanAir?

- A. microwave ovens
- B. rogue APs
- C. malicious clients
- D. co-channel interference

Correct Answer: A

Section: (none)

Explanation

Explanation/Reference:

Explanation:

QUESTION 19

A network engineer notices that two mesh APs are having problems communicating. After reviewing the current radio configurations, it is noted that one AP is transmitting at 3 mW while the other is transmitting at 60 mW. How many decibels would the 3-mW AP need its power increased to match the 60-mW AP?

- A. 8
- B. 12
- C. 13
- D. 20
- E. 57

Correct Answer: C

Section: (none)

Explanation

Explanation/Reference:

Explanation:

QUESTION 20

A network engineer requires an antenna for a point-to-point bridge with at least 20 dBi of gain. Which antenna is appropriate for the task?

- A. Yagi
- B. patch
- C. parabolic dish
- D. dipole
- E. internal omnidirectional

Correct Answer: C

Section: (none)

Explanation

Explanation/Reference:

Explanation:

QUESTION 21

An engineer needs to find out the maximum EIRP allowed for their office in Asia. What regulatory body should be contacted?

- A. CRTC

- B. ETSI
- C. IEEE
- D. NTT

Correct Answer: D

Section: (none)

Explanation

Explanation/Reference:

Explanation:

QUESTION 22

A wireless engineer has an access point using the 5.725-GHz channel in the United States. In which band is the AP operating?

- A. UNII-1
- B. UNII-2
- C. UNII-2 Extended
- D. UNII-3

Correct Answer: C

Section: (none)

Explanation

Explanation/Reference:

Explanation:

QUESTION 23

Which RRM feature allows an access point to avoid non-IEEE 802.11 interference?

- A. DCA
- B. TPC
- C. RF groups
- D. coverage hole detection

Correct Answer: A

Section: (none)

Explanation

Explanation/Reference:

Explanation:

QUESTION 24

Which IEEE 802.11n client feature can combine the signal from multiple antennas and radio chains to improve SNR?

- A. channel aggregation
- B. spatial multiplexing
- C. MAC layer efficiency
- D. TxBF
- E. MRC
- F. MCS

Correct Answer: E

Section: (none)

Explanation

Explanation/Reference:

Explanation:

QUESTION 25

An engineer needs an AP with at least two spatial streams, four receivers, and three transmitters. Which device meets these requirements?

- A. 2x4:3
- B. 2x3:4
- C. 4x3:2
- D. 3x4:2

Correct Answer: D

Section: (none)

Explanation

Explanation/Reference:

Explanation:

QUESTION 26

Which option is used to form the BSSID in a BSS?

- A. AP radio MAC address
- B. AP wired MAC address

- C. AP serial number
- D. client radio MAC address
- E. client wired MAC address
- F. client serial number

Correct Answer: A

Section: (none)

Explanation

Explanation/Reference:

Explanation:

QUESTION 27

A network engineer at a retail store needs a wireless deployment that can be easily maintained and verified for PCI compliance. What solution will meet this need with the least work?

- A. Cloud
- B. Autonomous
- C. FlexConnect
- D. Centralized

Correct Answer: A

Section: (none)

Explanation

Explanation/Reference:

Explanation:

QUESTION 28

When using a Split MAC architecture, how many CAPWAP data tunnels will be built to an AP with four SSIDs across two VLANs?

- A. 1
- B. 2
- C. 3
- D. 4

Correct Answer: A

Section: (none)

Explanation

Explanation/Reference:

Explanation:

QUESTION 29

A customer has ordered a Cisco 5760 Wireless Controller. What speed and quantity of ports are needed for full-speed operation?

- A. 6 x 1 Gb
- B. 6 x 10 Gb
- C. 2 x 10 Gb
- D. 2 x 1 Gb
- E. 8 x 1 Gb
- F. 8 x 10 Gb

Correct Answer: B

Section: (none)

Explanation

Explanation/Reference:

Explanation:

QUESTION 30

Refer to the exhibit.

Interface Name	VLAN Identifier	IP Address	Interface Type
ap-manager	4	192.168.4.2	Dynamic
clients	2	192.168.2.2	Dynamic
guests	3	192.168.3.2	Dynamic
management	untagged	192.168.1.2	Static
mgmt	1	192.168.0.2	Dynamic
virtual	N/A	1.1.1.1	Static

A network administrator is attempting to connect to the GUI of a WLC with interfaces as shown. Which IP address should the network administrator use?

- A. 192.168.0.2
- B. 192.168.1.2
- C. 192.168.2.2
- D. 192.168.3.2
- E. 192.168.4.2

Correct Answer: B

Section: (none)

Explanation

Explanation/Reference:

Explanation:

QUESTION 31

A network engineer is connected via wireless to a Cisco AireOS WLC and wants to download the configuration but is unable to do so. Which change will correct the issue?

- A. enable management via wireless
- B. connect via wired network
- C. enable Telnet
- D. enable WebAuth SecureWeb
- E. connect on 5-GHz SSID

Correct Answer: B

Section: (none)

Explanation

Explanation/Reference:

Explanation:

QUESTION 32

A customer wants to deploy Cisco Cloud Wireless architecture with 802.11ac capabilities. Which two access points would meet the customer's requirements? (Choose two.)

- A. Cisco 3700 Access Points
- B. Cisco MR34 Access Points
- C. Cisco MR18 Access Points

- D. Cisco 3600 Access Points
- E. Cisco MR72 Access Points
- F. Cisco 1570 Access Points
- G. Cisco MR26 Access Points

Correct Answer: AE

Section: (none)

Explanation

Explanation/Reference:

Explanation:

QUESTION 33

An engineer is trying to convert the IP Address of the wireless controller to amend DHCP Option 43 configuration on the DHCP server. What mathematical format must the IP address of the Wireless controller be converted to in order to function correctly?

- A. Hexadecimal
- B. Binary
- C. Decimal
- D. ASCII

Correct Answer: A

Section: (none)

Explanation

Explanation/Reference:

Explanation:

QUESTION 34

Refer to the exhibit.

General

Credentials

Interfaces

High Availability

Inventory

Advanced

	Name	Management IP Address
Primary Controller	WLC1	10.201.204.8
Secondary Controller	WLC2	10.201.204.11
Tertiary Controller	WLC3	10.201.204.6

AP Failover Priority

Low

High Availability

AP Heartbeat Timeout(1-30)

30

Local Mode AP Fast Heartbeat Timer State

Disable

H-REAP Mode AP Fast Heartbeat Timer State

Disable

AP Primary Discovery Timeout(30 to 3600)

120

Back-up Primary Controller IP Address

10.201.204.19

Back-up Primary Controller name

Back-UP-WLC

Back-up Secondary Controller IP Address

Back-up Secondary Controller name

TCP MSS

Global TCP Adjust MSS☐

AP Retransmit Config Parameters

AP Retransmit Count

5

☐

AP Retransmit Interval

3

☐

WLC1 becomes unresponsive due to a power failure at a customer site. How does the access point that is shown in the WLC controller GUI behave now that

WLC1 is disabled?

- A. associates to controller 10.201.204.6
- B. associates to controller 10.201.204.11
- C. associates to controller 10.201.204.8
- D. associates to controller 10.201.204.19

Correct Answer: B

Section: (none)

Explanation

Explanation/Reference:

Explanation:

QUESTION 35

A customer wants to deploy a mesh network with 2 root access points and 10 mesh access points. The root access points should be configured as which mode on the WLC?

- A. mesh
- B. FlexConnect
- C. bridge
- D. rouge detection
- E. sniffer

Correct Answer: C

Section: (none)

Explanation

Explanation/Reference:

Explanation:

QUESTION 36

A customer has completed the installation of an 802.11ac greenfield deployment at their corporate headquarters. They would like to leverage 802.11ac enhanced speeds on the trusted employee WLAN. In order to configure the employee WLAN, what Layer 2 security policies are valid?

- A. WPA2 (TKIP)
- B. WPA(AES)
- C. OPEN

D. WEP

Correct Answer: C

Section: (none)

Explanation

Explanation/Reference:

Explanation:

QUESTION 37

A customer cannot access the GUI on the Cisco 5508 Wireless Controller from the management interface due to network failure. Which interface can the customer use to access the WLC GUI until the network issues are resolved?

- A. virtual
- B. dynamic
- C. console port
- D. service port

Correct Answer: D

Section: (none)

Explanation

Explanation/Reference:

Explanation:

QUESTION 38

Refer to the exhibit.

```
(Cisco Controller) >show network summary
RF-Network Name..... Cisco
Web Mode..... Disable
Secure Web Mode..... Disable
Secure Web Mode Cipher-Option High..... Disable
Secure Web Mode Cipher-Option SSLv2..... Disable
Secure Web Mode RC4 Cipher Preference..... Disable
OCSP..... Disabled
OCSP responder URL.....
Secure Shell (ssh)..... Enable
Telnet..... Disable
Ethernet Multicast Forwarding..... Disable
Ethernet Broadcast Forwarding..... Disable
IPv4 AP Multicast/Broadcast Mode..... Multicast Address : 239.0.1.1
IGMP snooping..... Disabled
IGMP timeout..... 60 seconds
IGMP Query Interval..... 20 seconds
MLD snooping..... Disabled
MLD timeout..... 60 seconds
MLD query interval..... 20 seconds
User Idle Timeout..... 300 seconds
ARP Idle Timeout..... 300 seconds
```

A customer is using central web authentication with a Cisco 5508 Wireless Controller and Cisco Identity Services Engine. An error occurs when wireless clients are redirected to the hosted splash page. What is causing the client error?

- A. Secure Web Mode is disabled on the WLC.
- B. OCSP is disabled on the WLC.
- C. Management Via Dynamic Interface is disabled on the WLC.

D. Ethernet Multicast Forwarding is enabled on the WLC.

Correct Answer: A

Section: (none)

Explanation

Explanation/Reference:

Explanation:

QUESTION 39

A customer is using the access point GUI to upgrade the software on an autonomous access point to convert it to a lightweight access point. Which two transfer protocols are valid for conducting this transfer from the WLC? (Choose two.)

- A. FTP
- B. RCP
- C. SFTP
- D. HTTP
- E. SCP
- F. TFTP

Correct Answer: DF

Section: (none)

Explanation

Explanation/Reference:

Explanation:

QUESTION 40

An engineer wants to set up guest wireless that requires users to log in via a splash page prior to accessing the network. Which authentication method should be configured?

- A. LDAP
- B. RADIUS
- C. local authentication
- D. WebAuth
- E. PSK

Correct Answer: D

Section: (none)

Explanation

Explanation/Reference:

Explanation:

QUESTION 41

An engineer would like to setup secure authentication for a wireless network that will utilize single sign-on. Which two authentication methods can be used to accomplish this? (Choose two.)

- A. LDAP
- B. RADIUS
- C. Local authentication
- D. WEP
- E. PSK

Correct Answer: AB

Section: (none)

Explanation

Explanation/Reference:

Explanation:

QUESTION 42

An engineer wants to have users who connect to a WLAN be redirected to a terms-of-service page with the company logo and a login. What should be configured on the WLAN to enable this capability?

- A. Layer 2 IEEE 802.1x
- B. Web Policy Slash Page Web Redirect
- C. Web Policy Authentication
- D. AAA Servers
- E. Web Policy Passthrough

Correct Answer: C

Section: (none)

Explanation

Explanation/Reference:

Explanation:

QUESTION 43

What suite of algorithms results in slower connection rates when using 802.11N technology?

- A. WPA2
- B. CCMP
- C. TKIP
- D. AES

Correct Answer: C

Section: (none)

Explanation

Explanation/Reference:

Explanation:

QUESTION 44

An engineer assists a user in configuring an Android device for authentication to an IEEE 802.1x EAP WLAN with PEAPv1. The Phase 2 authentication should be configured as which option?

- A. LEAP
- B. MSCHAPv2
- C. TLS
- D. TTLS

Correct Answer: B

Section: (none)

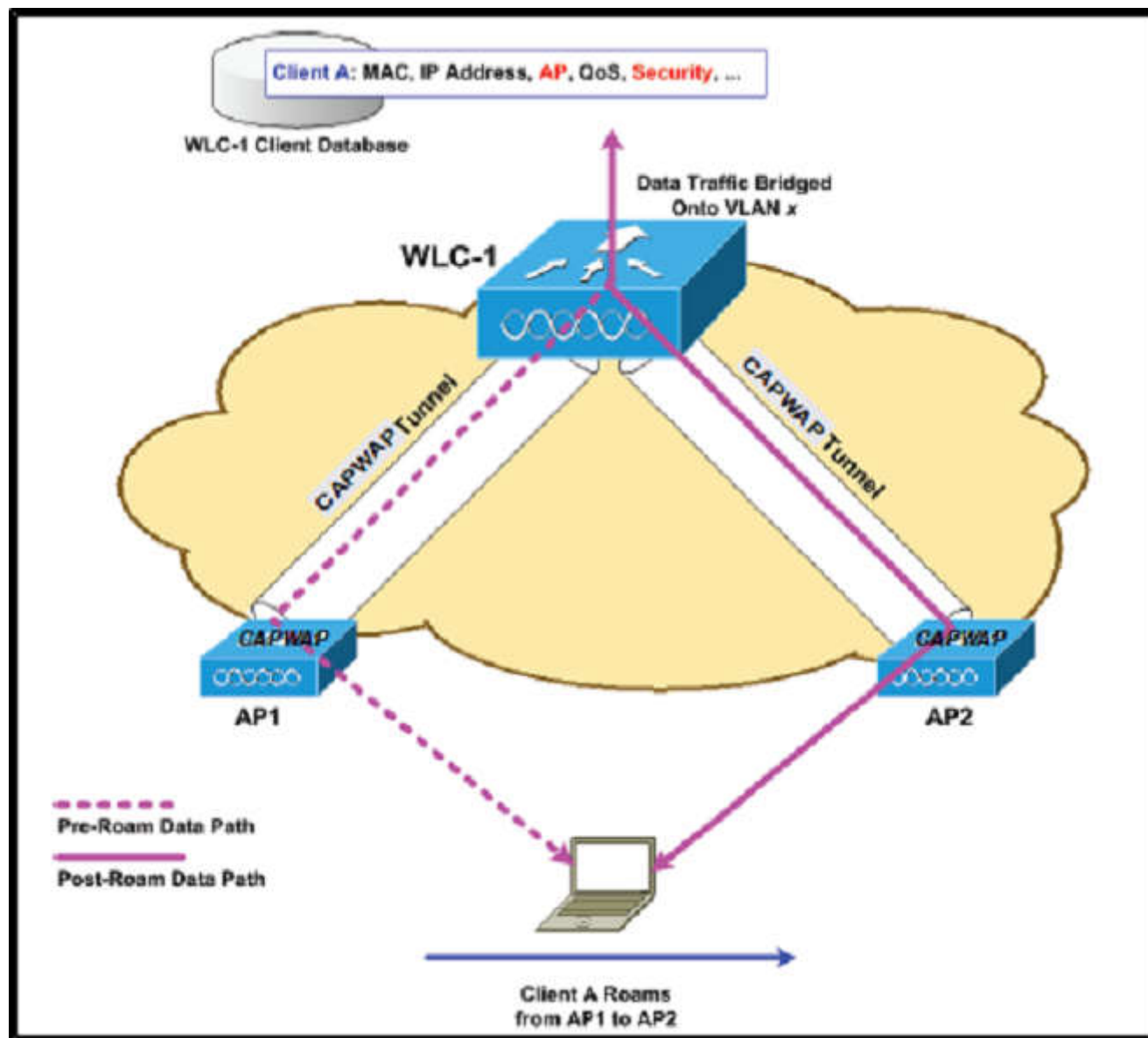
Explanation

Explanation/Reference:

Explanation:

QUESTION 45

Refer to the exhibit.



Which two wireless functions is the client experiencing? (Choose two.)

- A. Inter-controller Roaming
- B. Intra-controller Roaming
- C. Layer 2 Roaming
- D. Layer 3 Roaming
- E. Inter-subnet roaming
- F. Re-authentication

Correct Answer: BC

Section: (none)

Explanation

Explanation/Reference:

Explanation:

QUESTION 46

What is the approximate time difference for a client to perform an intracontroller roam compared to an intercontroller roam?

- A. 1 ms
- B. 10 ms
- C. 20 ms
- D. 30 ms

Correct Answer: B

Section: (none)

Explanation

Explanation/Reference:

Explanation:

QUESTION 47

Which two attributes must be configured to match in order for WLCs to operate in the same mobility group? (Choose two.)

- A. mobility domain name
- B. virtual IP address
- C. service interface address
- D. hardware model
- E. software version

Correct Answer: AB

Section: (none)

Explanation

Explanation/Reference:

Explanation:

QUESTION 48

Which operating mode is valid for controllers in a converged access architecture?

- A. switch peer groups
- B. mobility controller
- C. auto-anchor
- D. foreign anchor

Correct Answer: B

Section: (none)

Explanation

Explanation/Reference:

Explanation:

QUESTION 49

An engineer wants to deploy a 2504 controller as the anchor controller for a guest WLAN that resides on a 5508 controller in a different mobility group. What configuration change must be applied to support this deployment strategy?

- A. UDP 16666 and IP Protocol 97 must be enabled on the 2504 controller
- B. UDP 5246 and TCP Protocol 97 must be enabled on the router
- C. The 2504 controller must be added to the same mobility group as the 5508.
- D. DHCP Option 43 must be added to the neighboring switchport

Correct Answer: C

Section: (none)

Explanation

Explanation/Reference:

Explanation:

QUESTION 50

Which interface is used to connect the foreign and anchor controllers?

- A. management
- B. service
- C. virtual
- D. dynamic

Correct Answer: A

Section: (none)

Explanation

Explanation/Reference:

Explanation:

QUESTION 51

A customer has a corporate SSID that is configured to authenticate against an ACS server to validate client credentials on the corporate SSID. The customer has a firewall logically positioned on the network between the WLC and the ACS server in the network architecture. Which port must the firewall allow to ensure that authentication can occur?

- A. 43
- B. 1812
- C. 5146
- D. 8143

Correct Answer: B

Section: (none)

Explanation

Explanation/Reference:

Explanation:

QUESTION 52

Refer to the exhibit.

```
interface GigabitEthernet2/1
  no ip address
  switchport
  switchport trunk encapsulation dot1q
  switchport trunk allowed vlan 1,5,15,20,25,30,35,40,45,50,55,100
  switchport trunk native vlan 44
  switchport mode trunk
end
```

An engineer is configuring a SSID to utilize the management interface on the WLC. The management interface is configured with an untagged VLAN in the wireless controller interface settings. The controller is connected to a neighboring switch via the interface shown in the diagram. Which VLAN will traffic coming from the newly created SSID use to traverse the wired network?

- A. 1
- B. 20
- C. 44
- D. 50

Correct Answer: C

Section: (none)

Explanation

Explanation/Reference:

Explanation:

QUESTION 53

During an upgrade, the wireless infrastructure has seen a few access points join and then drop off the network. After further investigation, it appears the access points may have an IOS code version that is causing issues. Where in the controller is this information found?

- A. GUI > Wireless > Access Point > General
- B. CLI > show ap image all
- C. GUI > Monitor > Software Version

D. CLI > show sysinfo

Correct Answer: A

Section: (none)

Explanation

Explanation/Reference:

Explanation:

QUESTION 54

Microsoft Active Directory integrated machines are not authenticating to the internal WLAN. The WLAN settings are WPA2-AES-802.1x and are authenticating to a Cisco Identity Services Engine server. You investigate and note that non-domain authenticated machines are properly authenticating to the WLAN using their Active Directory credentials. Why would this problem occur?

- A. The WLAN is configured improperly in group policy.
- B. The ACS server is not joined to the domain, causing authentications to fail.
- C. The domain machines are configured to disable the wireless adapter.
- D. The non-domain machines are using local accounts that are not authenticated through the domain.

Correct Answer: A

Section: (none)

Explanation

Explanation/Reference:

Explanation:

QUESTION 55

Mac OS X machines are having issues accessing the wireless network. While working with TAC, the administrator is asked to find the Mac laptop's wireless adapter model and driver. Where should the administrator look to find this information?

- A. About This Mac > System Report
- B. Control Panel > System
- C. System Preferences > Network > Wi-Fi Adapter > Advanced
- D. Control Panel > Networking > Adapters > Properties

Correct Answer: A

Section: (none)

Explanation

Explanation/Reference:

Explanation:

QUESTION 56

An engineer is trying to determine from the controller CLI whether or not Telnet is enabled on the wireless controller. Which command can be entered to display this information?

- A. show network summary
- B. show aaa auth
- C. show radius summary
- D. show ldap statistics

Correct Answer: A

Section: (none)

Explanation

Explanation/Reference:

Explanation:

QUESTION 57

An engineer is trying to identify if radar has impacted the wireless network at a customer site. When using the controller GUI, which dashboard in the Monitor section presents this information?

- A. 802.11a/n - Air Quality Reports
- B. Clean Air - Worst Air Quality Report
- C. 802.11b/g/n - Interfering Devices
- D. Statistics - Mobility Statistics

Correct Answer: A

Section: (none)

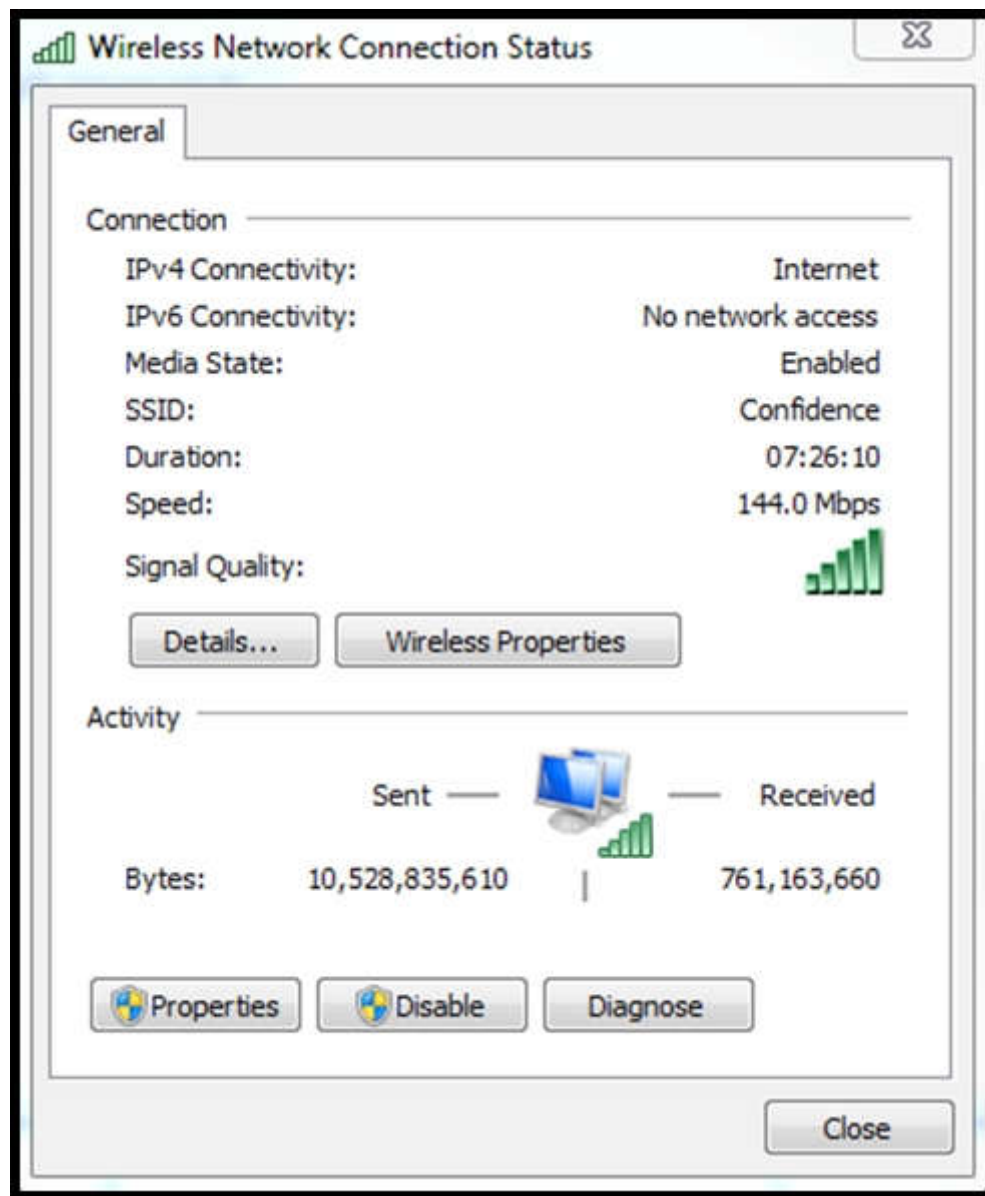
Explanation

Explanation/Reference:

Explanation:

QUESTION 58

Refer to the exhibit.



A customer is determining whether a Windows 7 laptop is operating on the correct IEEE 802.11 standard. Which standard is being used by the laptop in the

exhibit?

- A. 802.11b
- B. 802.11g
- C. 802.11n
- D. 802.11p

Correct Answer: C

Section: (none)

Explanation

Explanation/Reference:

Explanation:

QUESTION 59

An engineer is using a predictive survey tool to estimate placement of APs in a carpeted office space. Most interior walls should be assigned which attenuation value?

- A. 2 dB
- B. 3 dB
- C. 4 dB
- D. 5 dB

Correct Answer: B

Section: (none)

Explanation

Explanation/Reference:

Explanation:

QUESTION 60

An engineer is conducting an active survey for indoor coverage in a warehouse. The warehouse has long aisles with racks that extend to the ceiling. Which antenna type has a radiation pattern that is suited to provide coverage in each aisle?

- A. Yagi
- B. patch
- C. omnidirectional
- D. dipole

Correct Answer: B

Section: (none)

Explanation

Explanation/Reference:

Explanation:

QUESTION 61

Following the deployment of a wireless network for data and voice services, an engineer is to validate the coverage. Which type of survey is required to ensure coverage?

- A. passive
- B. active
- C. fingerprinting
- D. calibrating

Correct Answer: A

Section: (none)

Explanation

Explanation/Reference:

Explanation:

QUESTION 62

During the deployment of a wireless network for data and location services, an engineer is to fine-tune the location services. What is this type of survey called?

- A. passive fingerprinting
- B. passive calibrating
- C. active fingerprinting
- D. active calibrating

Correct Answer: A

Section: (none)

Explanation

Explanation/Reference:

Explanation:

QUESTION 63

Refer to the exhibit.



In an effort to identify RF characteristics at a customer location, an RF engineer uses the Spectrum Analyzer tool that is shown. Which feature that is native to the Spectrum Analyzer is identified by the exhibit?

- A. Real-Time FFT
- B. Duty Cycle
- C. Max Hold
- D. Time Domain

Correct Answer: A

Section: (none)

Explanation

Explanation/Reference:

Explanation:

QUESTION 64

Refer to the exhibit.



The site in this AirMagnet Survey heat map is ready for which level of service?

A. data

- B. voice
- C. location
- D. RFID

Correct Answer: A

Section: (none)

Explanation

Explanation/Reference:

Explanation:

QUESTION 65

Which two services require an RToWLAN design? (Choose two.)

- A. WVoIP
- B. video conferencing
- C. multicast video
- D. Telnet
- E. SSH

Correct Answer: AB

Section: (none)

Explanation

Explanation/Reference:

Explanation:

QUESTION 66

DRAG DROP

Drag the propagation behavior on the left to the corresponding environment on the right.

Select and Place:

Absorption

Diffraction

Scattering

Reflection

Free Space Path Loss

Multipath

Distant Point to Point Line of Sight

Distant Point to Point with Obstacles

Metal Cabinets in Dense Office

Pass Through a Wooden Wall

Pass Through Rain

Point to Point Over Body of Water

Correct Answer:

Free Space Path Loss

Multipath

Diffraction

Absorption

Scattering

Reflection

Section: (none)

Explanation

Explanation/Reference:

QUESTION 67

What is the effect of increasing antenna gain on a radio?

- A. focusing energy in a defined direction
- B. adding energy creating a larger cell
- C. aligning phase shifting
- D. improving frequency specific diversity

Correct Answer: B

Section: (none)

Explanation

Explanation/Reference:

Explanation:

QUESTION 68

Which signal strength reading indicates that the engineer is closest to the access point?

- A. -43 dBm
- B. -67 dBm
- C. -87 dBm
- D. -100 dBm

Correct Answer: A

Section: (none)

Explanation

Explanation/Reference:

Explanation:

QUESTION 69

The new tablets for the sales department require an SNR of 18 or more to operate. Given a noise floor of -88 dBm, what is the minimum RSSI that is needed?

- A. -60 dBm
- B. -70 dBm
- C. -72 dBm
- D. -80 dBm
- E. -96 dBm
- F. -106 dBm

Correct Answer: B

Section: (none)

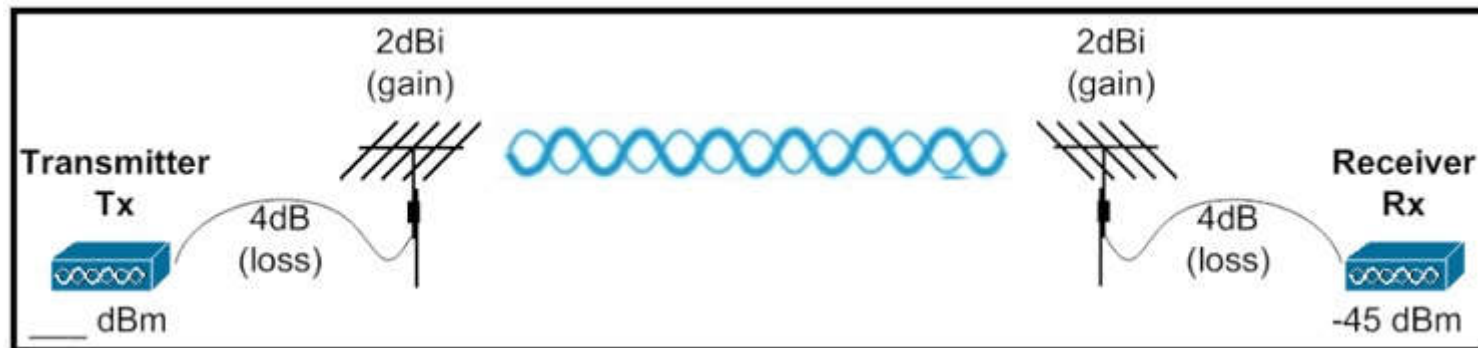
Explanation

Explanation/Reference:

Explanation:

QUESTION 70

Refer to the exhibit.



A network engineer needs the far end of a wireless bridge to receive at -45dBm. Based on the diagram, what value in dBm must the transmitter use to send to achieve the desired result?

- A. -118
- B. -28
- C. -20
- D. 20
- E. 28
- F. 118

Correct Answer: E

Section: (none)

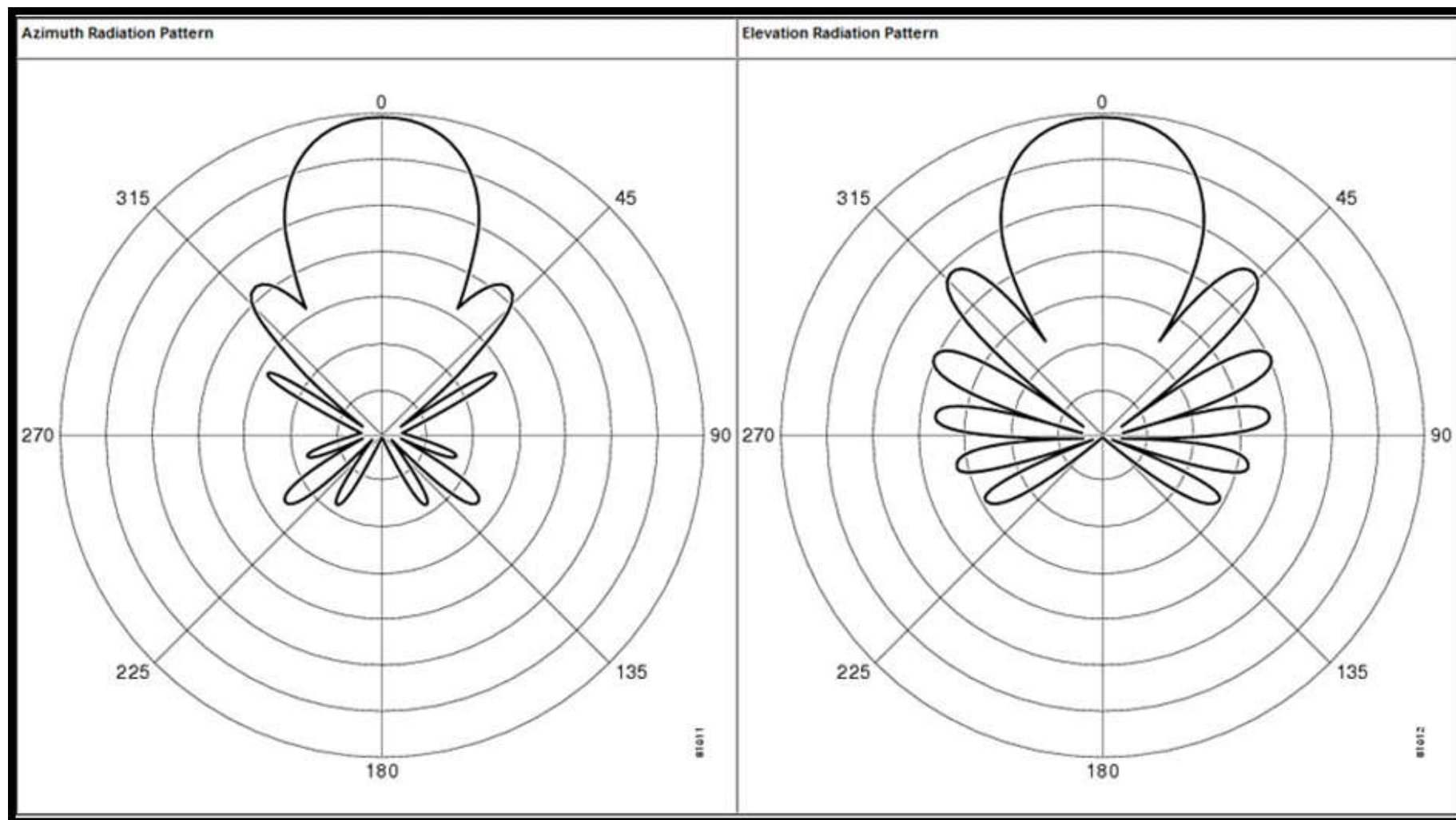
Explanation

Explanation/Reference:

Explanation:

QUESTION 71

Refer to the exhibit.



A wireless engineer has an antenna with the radiation pattern shown in the exhibit. What type of antenna is it?

- A. Patch
- B. Yagi
- C. Parabolic dish
- D. Dipole

E. Internal omni

Correct Answer: B

Section: (none)

Explanation

Explanation/Reference:

Explanation:

QUESTION 72

When reading a radiation pattern for an antenna, at which two drops in signal and power is the beamwidth measured? (Choose two.)

- A. 3 dB
- B. 6 dB
- C. 9 dB
- D. 10 dB
- E. 1/2 power
- F. 1/4 power
- G. 1/8 power
- H. 1/10 power

Correct Answer: AE

Section: (none)

Explanation

Explanation/Reference:

Explanation:

QUESTION 73

When calculating the link budget for a wireless point-to-point bridge, the engineer notices that one antenna has its gain marked as 2.85 dBd. With a 20-mW access point and 3-dBi loss for the cable, what is the approximate EIRP?

- A. 15 dBm
- B. 18 dBm
- C. 22 dBm
- D. 25 dBm

Correct Answer: A

Section: (none)

Explanation

Explanation/Reference:

Explanation:

QUESTION 74

Due to the terrain, a deployment requires a point-to-point wireless bridge to allow for network connectivity to a remote building. What 5GHz band would be permitted to use the highest power in the U.S.?

- A. U-NII-3
- B. U-NII-2 Extended
- C. U-NII-2
- D. U-NII-1

Correct Answer: A

Section: (none)

Explanation

Explanation/Reference:

Explanation:

QUESTION 75

A wireless engineer is designing a network for the London branch of a company. Which 5-GHz band allows the branch to use the highest EIRP?

- A. 2.4-GHz ISM
- B. UNII-1
- C. UNII-2
- D. UNII-2 Extended

Correct Answer: D

Section: (none)

Explanation

Explanation/Reference:

Explanation:

QUESTION 76

When using OFDM, how many subcarriers are devoted to carrying data?

- A. 4
- B. 12
- C. 44
- D. 48
- E. 52

Correct Answer: D

Section: (none)

Explanation

Explanation/Reference:

Explanation:

QUESTION 77

A company has all IEEE 802.11a/802.11g devices; however, its network administrator recommends installing 802.11n access points to provide greater performance. Which feature on an 802.11n AP provides better performance to legacy devices?

- A. channel aggregation
- B. transmit beam-forming
- C. maximal-ratio combining
- D. spatial multiplexing

Correct Answer: B

Section: (none)

Explanation

Explanation/Reference:

Explanation:

QUESTION 78

When roaming between APs in an ESS, which value changes?

- A. BSSID
- B. SSID
- C. VLAN
- D. IP range

Correct Answer: A

Section: (none)

Explanation

Explanation/Reference:

Explanation:

QUESTION 79

A customer is concerned about ease of wireless management. Which deployment model requires the highest administrative overhead to deploy and manage?

- A. autonomous
- B. local mode
- C. cloud
- D. converged

Correct Answer: A

Section: (none)

Explanation

Explanation/Reference:

Explanation:

QUESTION 80

Which architecture is used to divide the roles between the access point and the WLC when deploying a centralized wireless solution?

- A. Split MAC
- B. CAPWAP
- C. LWAPP
- D. Local MAC

Correct Answer: A

Section: (none)

Explanation

Explanation/Reference:

Explanation:

QUESTION 81

An autonomous AP maps the SSID to what on the wired network?

- A. BSSID
- B. VLAN
- C. QoS tag
- D. SG tag

Correct Answer: B

Section: (none)

Explanation

Explanation/Reference:

Explanation:

QUESTION 82

A customer is expecting wireless traffic in excess of 20 Gbps to traverse a single controller. Which wireless controller model fulfills this requirement?

- A. Cisco 5760 Wireless Controller
- B. Cisco Wireless Services Module 2
- C. Cisco 2504 Wireless Controller
- D. Cisco 8510 Wireless Controller
- E. Cisco 5500 Wireless Controller
- F. Cisco Virtual Wireless Controller

Correct Answer: A

Section: (none)

Explanation

Explanation/Reference:

Explanation:

QUESTION 83

An engineer is connecting a Cisco 5508 Wireless Controller that must connect to an out-of-band management network for management only. Which two options should be used for the port on the WLC and the cable type? (Choose two.)

- A. service port
- B. redundancy port
- C. console port
- D. distribution system port

- E. straight through cable
- F. crossover cable
- G. console cable

Correct Answer: AE

Section: (none)

Explanation

Explanation/Reference:

Explanation:

QUESTION 84

A user is unable to access a lobby administration web page when using a wireless laptop; however, the user can access the page with a wired desktop computer. Which management feature needs to be enabled on the WLC to allow laptop access?

- A. management via wireless
- B. dynamic interface management
- C. HTTP
- D. HTTPS
- E. TACACS
- F. SSH

Correct Answer: A

Section: (none)

Explanation

Explanation/Reference:

Explanation:

QUESTION 85

In version 8.0 code for CUWN, what interface can be assigned an IPv6 address?

- A. management
- B. dynamic
- C. AP-manager
- D. virtual
- E. service-port

Correct Answer: A

Section: (none)

Explanation

Explanation/Reference:

Explanation:

QUESTION 86

A network engineer is configuring a WLC running Cisco AireOS 8.0.100.0 for a company that uses IPv6. Which two interfaces can be configured with an IPv6 address? (Choose two.)

- A. management
- B. dynamic
- C. AP manager
- D. redundancy
- E. service

Correct Answer: AE

Section: (none)

Explanation

Explanation/Reference:

Explanation:

QUESTION 87

An engineer is deploying an autonomous AP, and the customer requests that all IEEE 802.11b data rates be disabled on the AP. Which interface must be amended to disable the 802.11b data rates on a Cisco Aironet 1252 Series Access Point?

- A. Dot11radio0
- B. Dot11radio1
- C. GigabitEthernet0
- D. BVI1

Correct Answer: A

Section: (none)

Explanation

Explanation/Reference:

Explanation:

QUESTION 88

After the initial deployment at a customer site, the master controller mode function was left enabled on the secondary controller after access points were primed and statically configured with primary, secondary, and tertiary controller failover. The guest anchor controller was also deployed in the architecture. The access points reboot after a power failure. Which controller will the access points associate to when the reboot process is completed?

- A. primary controller
- B. secondary controller
- C. tertiary controller
- D. guest anchor controller

Correct Answer: B

Section: (none)

Explanation

Explanation/Reference:

Explanation:

QUESTION 89

A remote site has requested that its wireless client traffic egress at the switch port of the access point. Which access point mode can be used?

- A. FlexConnect
- B. local
- C. monitor
- D. rogue detector
- E. SE-Connect

Correct Answer: A

Section: (none)

Explanation

Explanation/Reference:

Explanation:

QUESTION 90

Refer to the exhibit.

General

Security

QoS

Policy-Mapping

Layer 2

Layer 3

AAA Servers

Layer 2 Security [6](#)

WPA+WPA2

MAC Filtering [9](#) ☐

Fast Transition

Fast Transition ☐

Protected Management Frame

PMF

Disabled

WPA+WPA2 Parameters

WPA Policy



WPA2 Policy-AES



Authentication Key Management

802.1X

☐ Enable

CCKM

☐ Enable

PSK

☒ Enable

FT 802.1X

☐ Enable

An engineer is testing client connectivity and is unable to transmit or receive at IEEE 802.11n high throughput rates. Which two Layer 2 security configurations allow the client to successfully connect at 802.11n rates? (Choose two.)

- A. WPA2-AES 802.1x
- B. WPA2-TKIP PSK
- C. WPA-TKIP 802.1x
- D. Open
- E. 802.1x

Correct Answer: AD

Section: (none)

Explanation

Explanation/Reference:

Explanation:

QUESTION 91

A customer wants to use Cisco Prime Infrastructure to manage its current wireless infrastructure. The customer has 4 wireless controllers and 97 wireless access points. What is the minimum amount of licensing that is required on Cisco Prime Infrastructure to support the desired wireless infrastructure?

- A. 4 Lifecycle licenses and 125 Base licenses
- B. 100 Lifecycle licenses and 1 Base license
- C. 100 Lifecycle licenses and 4 Base licenses
- D. 125 Lifecycle licenses and 1 Base license

Correct Answer: B

Section: (none)

Explanation

Explanation/Reference:

Explanation:

QUESTION 92

A customer is reviewing Cisco Prime Infrastructure to identify malicious rogue access points that are operating within the customer environment. Which dashboard in Cisco Prime Infrastructure displays this information by default?

- A. Context Aware
- B. CleanAir

- C. Security
- D. General

Correct Answer: C

Section: (none)

Explanation

Explanation/Reference:

Explanation:

QUESTION 93

A customer is using the wireless controller GUI to back up the Cisco 5508 Wireless Controller configuration data. The controller is running IOS version 7.6 release. Which three transfer protocols are valid for conducting this transfer from the WLC? (Choose three.)

- A. FTP
- B. TFTP
- C. SFTP
- D. HTTP
- E. SCP
- F. Xmodem

Correct Answer: ABC

Section: (none)

Explanation

Explanation/Reference:

Explanation:

QUESTION 94

A customer who recently implemented Mac OS X Yosemite finds that the laptops have been autonegotiating the authentication protocols when performing RADIUS authentication to Cisco Identity Services Engine. What must the administrator do to statically set the correct settings for the Mac clients?

- A. Create a new network profile with the desired settings, using either the Apple iPhone Configuration Utility or Profile Manager and upload to all Mac OS X machines.
- B. Set the authentication configuration to use the desired settings under the System Preferences > Network > Advanced menu.
- C. Delete the SSID and have the users go through the authentication process again, this time selecting the settings during authentication.
- D. Select the SSID and change the settings to the desired configuration under Control Panel > Network > Wireless Networks and export to other machines.

Correct Answer: A

Section: (none)

Explanation

Explanation/Reference:

Explanation:

QUESTION 95

Refer to the exhibit.

```
*emWeb: Jan 15 15:18:34.818:  
%LOG-3-Q_IND: apf_site_override.c:2617  
Cannot find apgroup CISCO1
```

During deployment of a WLC on a customer site, the GUI log displayed this error message. What could be causing this error?

- A. An access point has been assigned to an AP group that has reached maximum capacity.
- B. An access point has been assigned to an AP group that has been deleted.
- C. An access point has been removed from an AP group and assigned to a FlexConnect AP group.
- D. An access point has been removed from an AP group and assigned to the default AP group.

Correct Answer: B

Section: (none)

Explanation

Explanation/Reference:

Explanation:

QUESTION 96

A customer suspects that a continuous transmitter is causing instability with the wireless clients that are operating on the 2.4-GHz wireless band. The customer is trying to determine which channel is being impacted by this transmitter. Which dashboard on the WLC GUI identifies this information?

- A. 802.11a/n - Air Quality Reports
- B. Clean Air - Worst Air Quality Report
- C. 802.11b/g/n - Interference Devices
- D. Statistics - Mobility Statistics

Correct Answer: C

Section: (none)

Explanation

Explanation/Reference:

Explanation:

QUESTION 97

A customer wants to analyze the data rates that are available to a corporate laptop in its wireless deployment. The customer wants a heat map that displays actual data and shows the data rates that are available to the client in different areas of its facility. When using AirMagnet Survey PRO, which type of survey provides the actual data rates?

- A. virtual
- B. predictive
- C. passive
- D. active

Correct Answer: D

Section: (none)

Explanation

Explanation/Reference:

Explanation:

QUESTION 98

On which two OSI layers does the IEEE focus in 802 standardization? (Choose two.)

- A. physical
- B. data-link
- C. network
- D. transport
- E. session
- F. presentation
- G. application

Correct Answer: AB

Section: (none)

Explanation

Explanation/Reference:

Explanation:

QUESTION 99

A customer wants to identify the amount of BSSID traffic that is propagating through its facility from neighboring networks. Which tool can be used to identify BSSID traffic in the facility?

- A. Wi-Fi scanner
- B. wireless attenuator
- C. RF jammer
- D. Cisco Identity Services Engine

Correct Answer: A

Section: (none)

Explanation

Explanation/Reference:

Explanation:

QUESTION 100

A customer is deploying the Cisco 5508 Wireless Controller in a unified wireless solution. Which command must be configured on the neighboring switch port if the management interface on the WLC is configured to send untagged traffic to ensure that management traffic utilizes VLAN 10?

- A. switchport trunk native vlan 10
- B. spanning-tree portfast
- C. switchport access vlan 10
- D. switchport trunk allowed vlan 10
- E. channel-group 10

Correct Answer: A

Section: (none)

Explanation

Explanation/Reference:

Explanation:

QUESTION 101

A customer has enabled the primary DNS server to return the correct controller IP address in response to a CISCO-CAPWAP-CONTROLLER.localdomain request

coming from new access points associating to the wireless network. The access points seem to still be receiving the wrong IP address and cannot associate to the primary controller. Which option explains why the access points are receiving the wrong IP information?

- A. The DHCP option 43 has an incorrect controller IP address configured.
- B. The DNS server must be configured to respond to CISCO-LWAPP-CONTROLLER.localdomain request.
- C. The controller and wireless action point need to be Layer 2 adjacent.
- D. The controller must be configured for DHCP option 15 request.

Correct Answer: A

Section: (none)

Explanation

Explanation/Reference:

Explanation:

QUESTION 102

An engineer has just deployed a Cisco Aironet 3702 Access Point with an access layer switch that supports IEEE 802.1af Power over Ethernet. How will the access points react to the wattage that is available in 802.1af?

- A. disable the BVI interface
- B. fail to boot in CAPWAP mode
- C. operate in 3x3 MIMO mode
- D. enable the 2.4-GHz radios with 40-MHz channel bonding

Correct Answer: C

Section: (none)

Explanation

Explanation/Reference:

Explanation:

QUESTION 103

A customer has a corporate SSID that is configured to authenticate against an ISE server to validate client credentials on the corporate SSID. The customer has a firewall logically positioned on the network between the WLC and the ACS server in the network architecture. Which port must the firewall allow to ensure that authentication can occur?

- A. 43
- B. 1812
- C. 5146

D. 8143

Correct Answer: B

Section: (none)

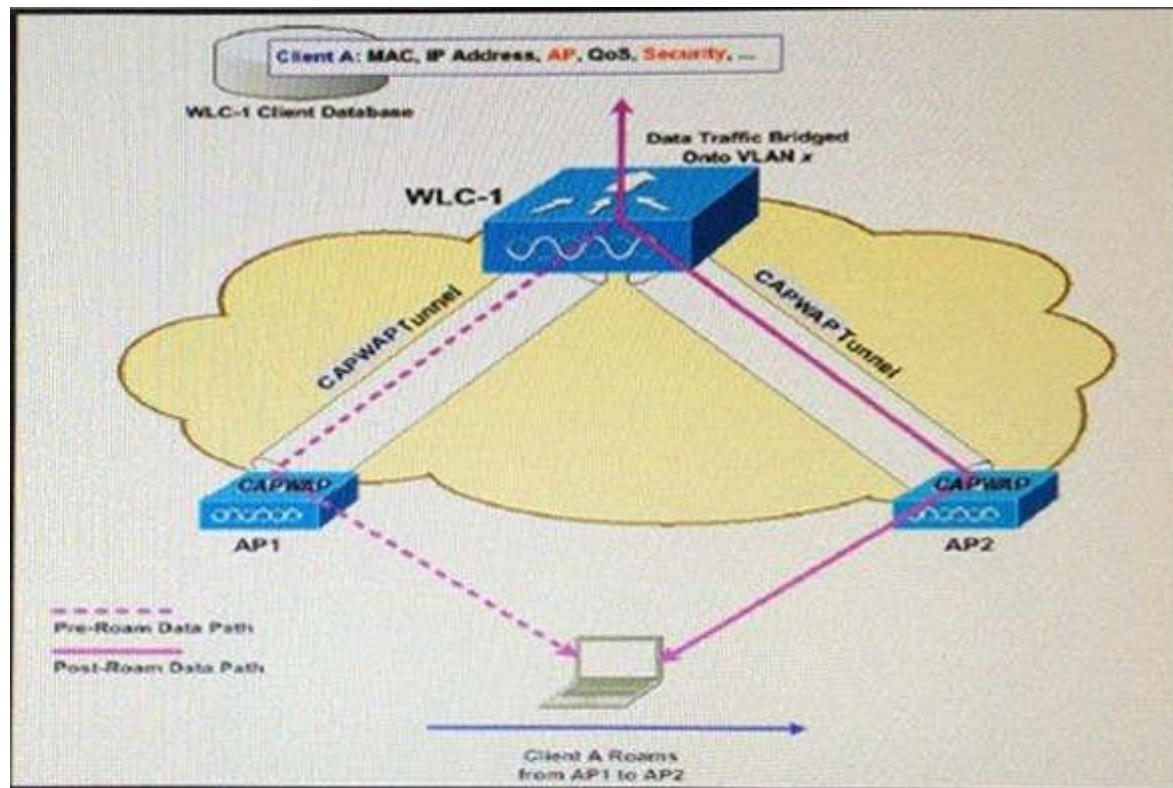
Explanation

Explanation/Reference:

Explanation:

QUESTION 104

Refer to the exhibit. Which wireless functions is the client experiencing?



A. Intra-controller Roaming

B. Layer 3 Roaming

- C. inter-controller Roaming
- D. inter-subnet Roaming

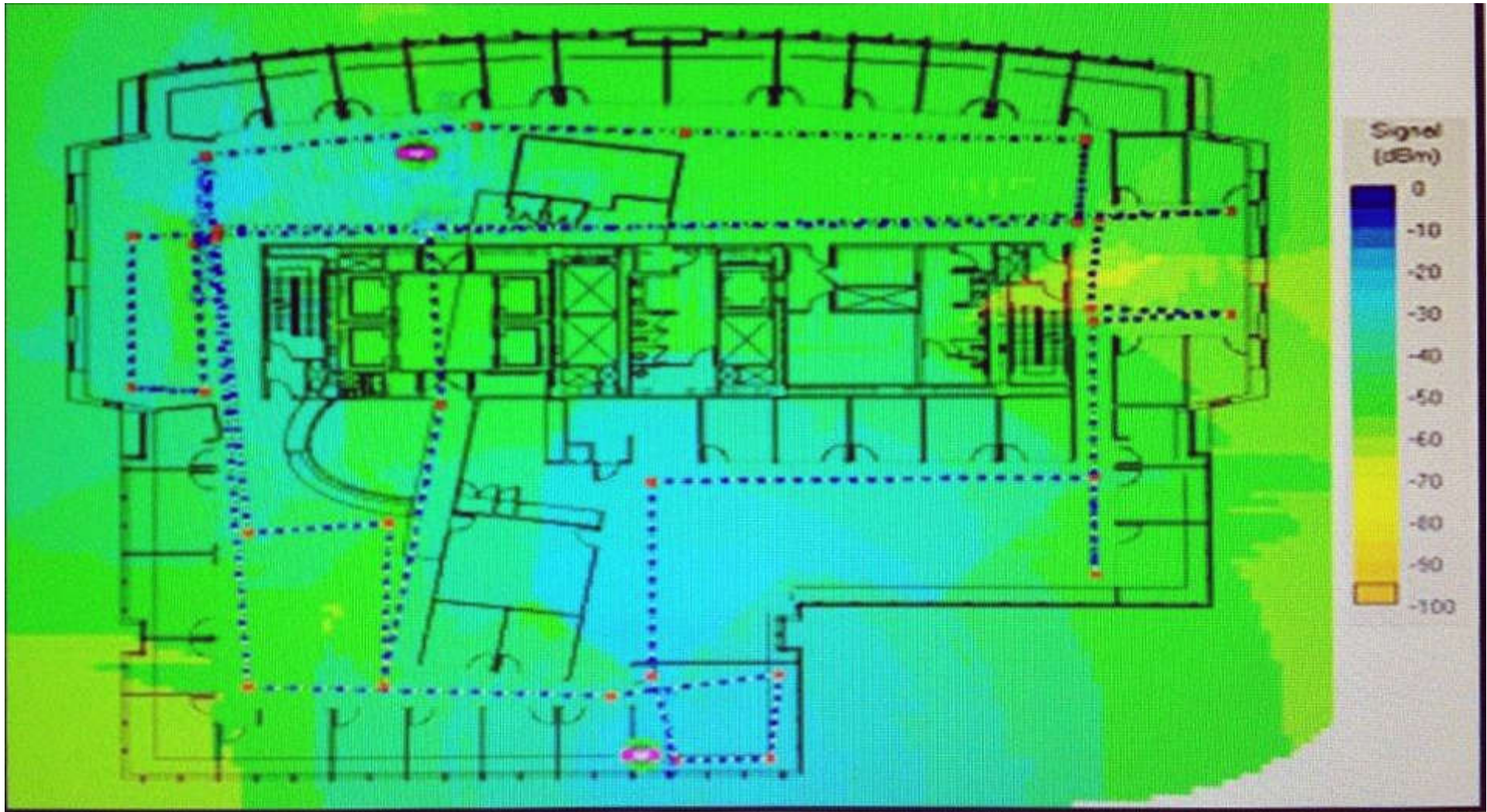
Correct Answer: A

Section: (none)

Explanation

Explanation/Reference:

QUESTION 105



Refer to the exhibit. The site in this AirMagnet Survey heat map is ready for which level of service?

- A. voice
- B. data
- C. location

D. RFID

Correct Answer: B

Section: (none)

Explanation

Explanation/Reference:

QUESTION 106

Following a WLC upgrade you want to check what version of code the access point is running. Where can you find this information?

- A. CLI > show sysinfo
- B. GUI > Monitor > Software Version
- C. CLI > show running configuration
- D. GUI > Wireless > Access point > General

Correct Answer: C

Section: (none)

Explanation

Explanation/Reference:

QUESTION 107

You are testing a new autonomous Cisco Aironet 1260 AP that has booted for the first time on the existing corporate network, which includes voice, data, and location services.

How do you reach the GUI of the AP?

- A. HTTP to 10.0.0.1.
- B. HTTPS to the DHCP address.
- C. HTTP to the DHCP address.
- D. HTTPS to 10.0.0.1.

Correct Answer: C

Section: (none)

Explanation

Explanation/Reference:

QUESTION 108

Which three operations does the lightweight access point manage in a split-MAC design? (Choose three.)

- A. association and re-association
- B. frame exchange and client handshake
- C. RF and mobility management
- D. beacons and probe responses
- E. MAC layer data encryption and decryption
- F. authentication and key management

Correct Answer: BDE

Section: (none)

Explanation

Explanation/Reference:

QUESTION 109

A network engineer is troubleshooting a LAP that is unable to join the controller and receives this message:

LWAPP_CLIENT_ERROR_DEBUG: No more AP manager IP addresses remain

What does the log indicate?

- A. An AP manager has the same IP address as another AP manager.
- B. A LAP has the same IP address as the AP manager.
- C. Two or more LAPs have the same IP address.
- D. Two or more controllers have the same IP address.

Correct Answer: B

Section: (none)

Explanation

Explanation/Reference:

QUESTION 110

An engineer has been asked to upgrade the code on a WLC that is running Cisco AireOS 8.0. Which two protocols can be used to download the code file to the controller? (Choose two.)

- A. SNMPv2c
- B. FTP
- C. SNMPv3
- D. SFTP
- E. HTTPS

Correct Answer: BD

Section: (none)

Explanation

Explanation/Reference:

QUESTION 111

An engineer is gathering information for a wireless survey of a hospital. What two pieces of information must be collected for an active survey to access the outcome best suited for the facility? (Choose two.)

- A. type of devices present on the new wireless network
- B. utilization of Location Services or voice applications
- C. existing Network Switch types and model numbers
- D. use of wireless for secure records
- E. spectrum analysis to locate all the computer work stations

Correct Answer: AB

Section: (none)

Explanation

Explanation/Reference:

QUESTION 112

A controller is connected to a Cisco Catalyst switch. The switch port configuration looks like this:

```
interface GigabitEthernet 1/0/10
switchport
```

switchport trunk encapsulation dot1q
switchport trunk allowed vlan 1,20,30,50
switchport trunk native vlan 20
switchport mode trunk

Which controller CLI command assigns its management interface to the native VLAN interface of the Cisco Catalyst switch?

- A. **config interface vlan management 20**
- B. **config interface vlan management 0**
- C. **config interface vlan management 1**
- D. **config interface vlan management 30**

Correct Answer: B

Section: (none)

Explanation

Explanation/Reference:

QUESTION 113

Which type of management tasks can be completed on a Cisco WLC remotely from a wireless client?

- A. All management and configuration tasks can be performed from a wireless client except for using **debug** commands.
- B. All management and configuration tasks, except uploads from and downloads to the Cisco WLC, are permitted.
- C. In the default configuration, no management or configuration is possible through the GUI on the Cisco WLS.
- D. The default configuration of the Cisco WLC allows only CLI access and then only the use of **show** commands, so no configuration is possible.

Correct Answer: C

Section: (none)

Explanation

Explanation/Reference:

QUESTION 114

Which description of the procedure for a lightweight AP to successfully establish a connection to a controller is true?

- A. The AP sends its certificate to the RADIUS server. The AP then authenticates the controller certificate as valid.
- B. The AP sends its certificate to the RADIUS server. The AP then authenticates the RADIUS certificate as valid.

- C. The AP authenticates the received Cisco WLC certificate as valid. The AP then sends its certificate to the controller.
- D. The AP sends its certificate to the controller. The AP then authenticates the received Cisco WLC certificate as valid.

Correct Answer: D

Section: (none)

Explanation

Explanation/Reference:

QUESTION 115

How many channels exist in the 2.4-GHz ISM band frequency space?

- A. 14
- B. 16
- C. 20
- D. 24

Correct Answer: A

Section: (none)

Explanation

Explanation/Reference:

QUESTION 116

What is the optimum 2.4 GHz wireless cell-overlap percentage for VoWLAN deployments?

- A. 10
- B. 20
- C. 15
- D. 5

Correct Answer: B

Section: (none)

Explanation

Explanation/Reference:

QUESTION 117

Which three primary components describe TKIP? (Choose three.)

- A. broadcast key rotation
- B. per-packet key hashing
- C. dynamic WEP
- D. message integrity check
- E. symmetric key cipher
- F. WPA2 enterprise mode

Correct Answer: ABD

Section: (none)

Explanation

Explanation/Reference:

QUESTION 118

Which two elements are needed to create a secure SSID on an autonomous AP? (Choose two.)

- A. SSID name
- B. WLC MAC address
- C. PSK
- D. LDAP server
- E. WLC IP

Correct Answer: AC

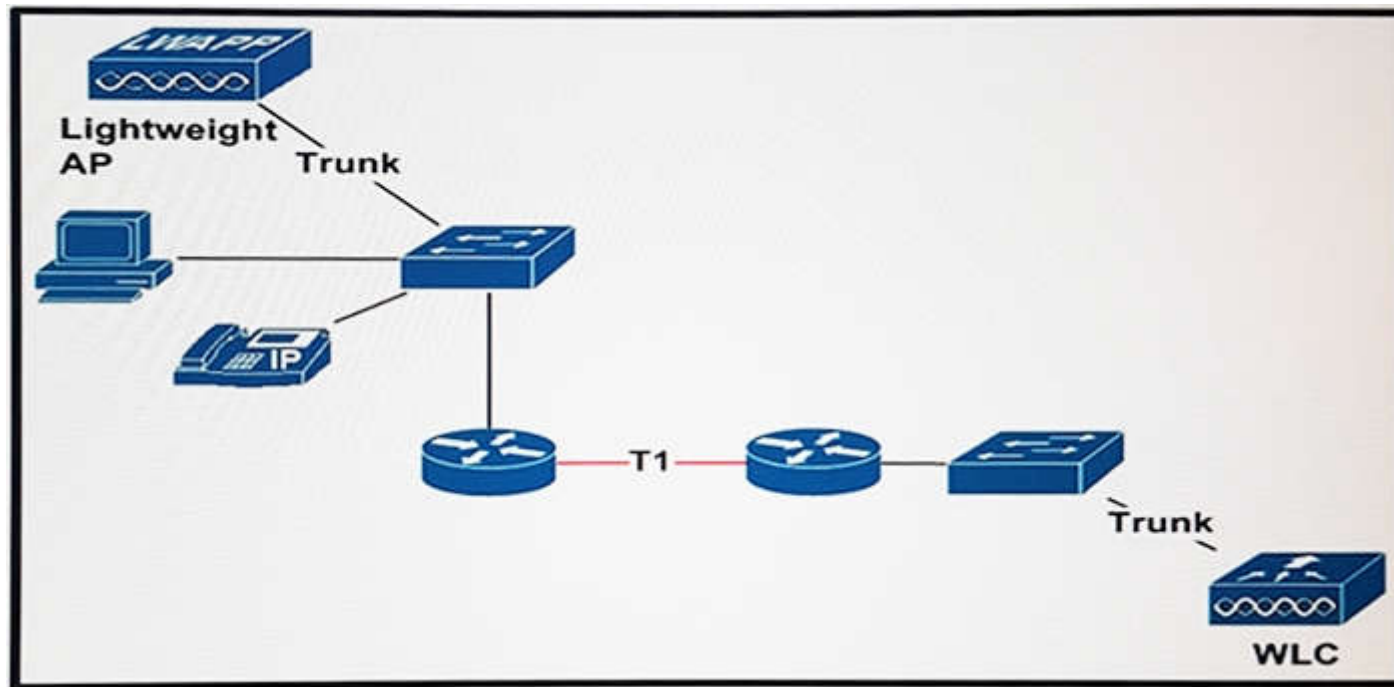
Section: (none)

Explanation

Explanation/Reference:

QUESTION 119

Refer to the exhibit.



An engineer is deploying lightweight access points for wireless services over a T1 connection. Which access point mode allows the traffic to be either switched at the AP port or tunneled back to the WLC?

- A. SE-Connect
- B. FlexConnect
- C. local
- D. monitor

Correct Answer: B

Section: (none)

Explanation

Explanation/Reference:

QUESTION 120

An engineer wants to set up WPA2 Enterprise using EAP-TLS and a remote RADIUS server. Which device(s) does the engineer specify the EAP type on?

- A. the authentication server only
- B. the supplicant and authenticator
- C. the supplicant and authentication server
- D. the authenticator and authentication server

Correct Answer: C

Section: (none)

Explanation

Explanation/Reference:

QUESTION 121

An enterprise needs their iPhones to connect to the EAP-TLS network. How should the devices be configured?

- A. Configure directly through the Settings application.
- B. Download the certificate from the web page then configure through the Settings application.
- C. Push the profile and certificate through Configuration Utility.
- D. Push the profile and certificate through iTunes.

Correct Answer: C

Section: (none)

Explanation

Explanation/Reference:

QUESTION 122

Which two WLC debug commands are appropriate to troubleshoot a wireless client that is associated to an AP? (Choose two.)

- A. **debug client <mac-address>**
- B. **debug capwap**
- C. **debug ap**
- D. **debug dot11**
- E. **debug dtls**

Correct Answer: AD

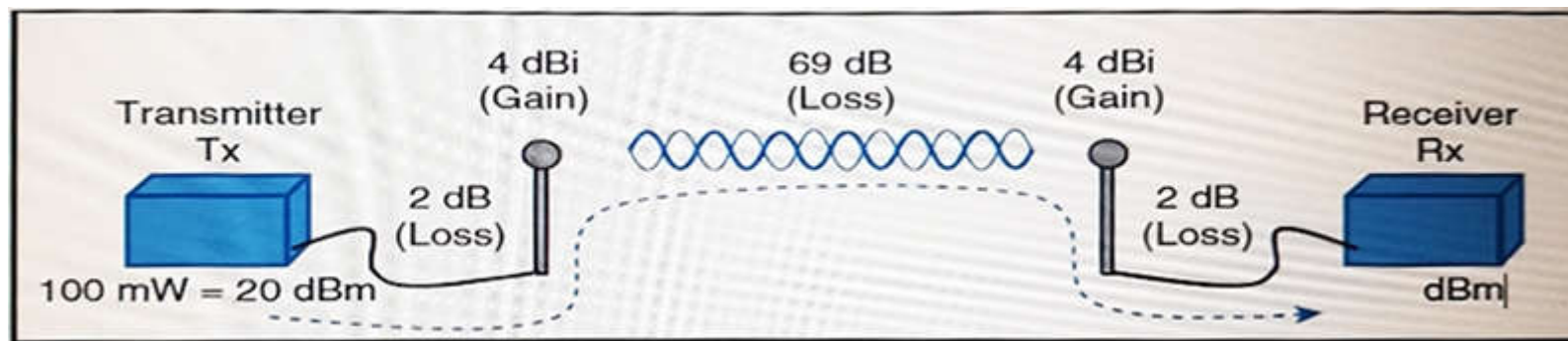
Section: (none)

Explanation

Explanation/Reference:

QUESTION 123

Refer to the exhibit.



Which option is the received signal power level at the receiver?

- A. -46
- B. -49.28
- C. -45
- D. -40.72

Correct Answer: C

Section: (none)

Explanation

Explanation/Reference:

QUESTION 124

The Cisco WLC administrator needs the guest client traffic to be sent via a tunnel to a specified controller in the DMZ, no matter which AP the guest user is connected to. What must be configured for a WLAN to achieve this requirement?

- A. asymmetric tunneling

- B. static mobility anchor
- C. symmetric tunneling
- D. FlexConnect

Correct Answer: B

Section: (none)

Explanation

Explanation/Reference:

QUESTION 125

Which option is the maximum power setting for an access point in any regulatory domain on a Cisco Wireless LAN Controller?

- A. 5
- B. 8
- C. 1
- D. 10

Correct Answer: C

Section: (none)

Explanation

Explanation/Reference:

QUESTION 126

Which two characteristics are components of mobility anchoring? (Choose two.)

- A. It is enabled as a global setting.
- B. Only one mobility anchor is allowed per WLAN.
- C. It is enabled on a per WLAN basis.
- D. Client traffic is tunneled to predefined WLC(s).
- E. It acts as master controller for a mobility group.

Correct Answer: CD

Section: (none)

Explanation

Explanation/Reference:

QUESTION 127

A client wants to implement an enterprise WLAN solution with the minimum hardware deployed onsite. What solution fulfills this requirement?

- A. converged
- B. centralized
- C. autonomous
- D. cloud

Correct Answer: C

Section: (none)

Explanation

Explanation/Reference:

QUESTION 128

If an antenna has a dBd of 8.6, what is the dBi value?

- A. 8.6
- B. 6.46
- C. 10.74
- D. 6.2

Correct Answer: C

Section: (none)

Explanation

Explanation/Reference:

QUESTION 129

Which governing body analyzes the applications and environment in which wireless networks are used?

- A. Wi-Fi Alliance
- B. IEEE

- C. ETSI
- D. FCC

Correct Answer: B

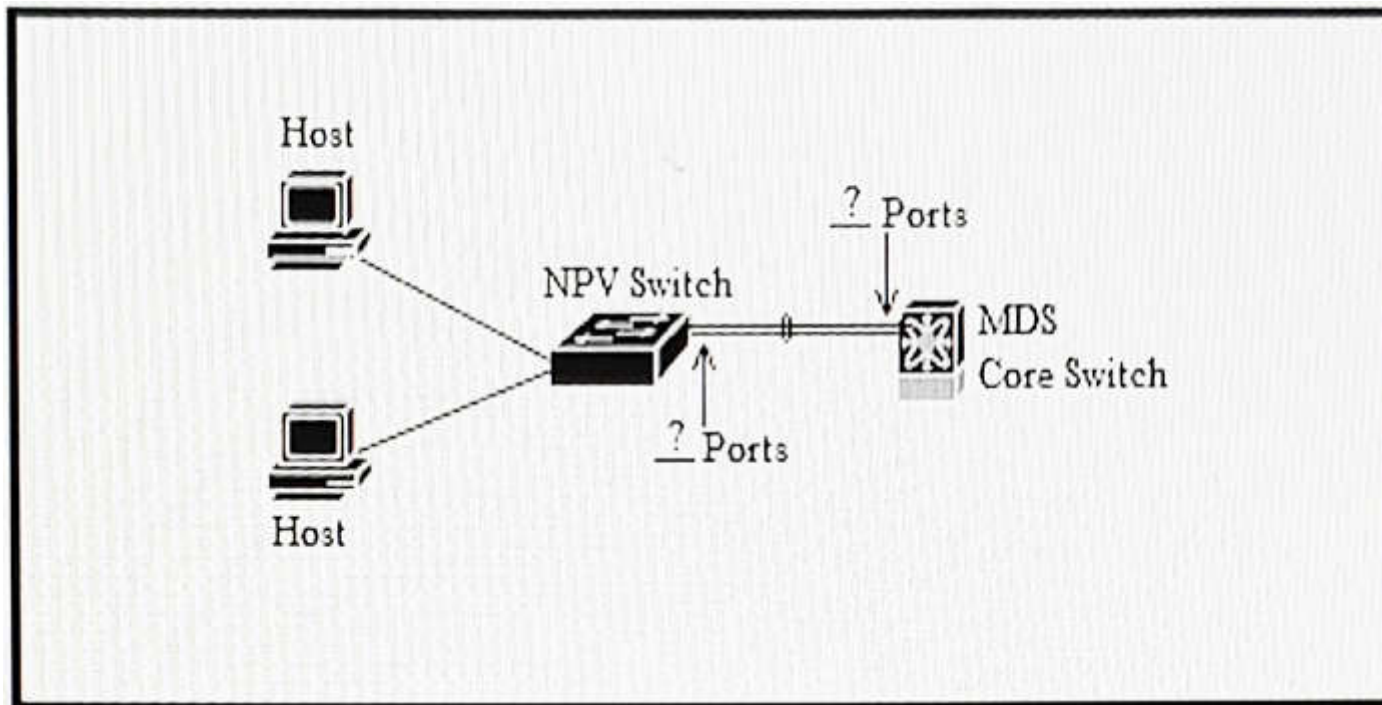
Section: (none)

Explanation

Explanation/Reference:

QUESTION 130

Refer to the exhibit.



An engineer is implementing a new network design that includes a port channel to connect an MDS core switch and an VPN switch. Which two Fibre Channel port types must be used to create the Fibre Channel port channel? (Choose two.)

- A. NL Port
- B. F Port
- C. NP Port
- D. E Port
- E. N Port
- F. TL Port

Correct Answer: BC

Section: (none)

Explanation

Explanation/Reference:

QUESTION 131

Periodically, Radio Resource Management can reconfigure the wireless network for best efficiency. Which two functions can be changed to meet network demands? (Choose two.)

- A. Remove clients that use too much bandwidth.
- B. Transmit Power Control
- C. Disable AP radios that do not provide adequate coverage.
- D. Change channels to non-country channels if needed
- E. Radio Monitoring for noise and interference.

Correct Answer: BE

Section: (none)

Explanation

Explanation/Reference:

QUESTION 132

Which three configuration elements must match for a client to successfully associate to a standalone AP? (Choose three.)

- A. BVI subnet
- B. PSK
- C. AP name
- D. SSID

- E. encryption method
- F. gateway IP

Correct Answer: BDE

Section: (none)

Explanation

Explanation/Reference:

QUESTION 133

Which option lists the client configurations steps that must be completed to have an Apple iOS device joined in a hidden SSID?

- A. Settings > WiFi > Join Known Networks.
- B. Settings > WiFi > Then tap the name of the SSID you want to connect to.
- C. Settings > WiFi > Other > Then configure the SSID parameters.
- D. Settings > WiFi > Disable/Renable wifi, then select the hidden SSID from the list of seen SSIDs.

Correct Answer: C

Section: (none)

Explanation

Explanation/Reference:

QUESTION 134

Which two statements about the requirements to configure intercontroller roaming are true? (Choose two.)

- A. The same AP manager interface is configured across controllers.
- B. The same mobility domain names are configured across controllers.
- C. The same RF group names are configured across controllers.
- D. The same virtual interface is configured across controllers.
- E. The same controller hardware version is configured across controllers.

Correct Answer: BD

Section: (none)

Explanation

Explanation/Reference:

QUESTION 135

In a network with a deployed Cisco WLC, which two entities must be configured with the shared secret key for 802.1X authentication? (Choose two.)

- A. RADIUS server
- B. wireless client
- C. AP
- D. WLC
- E. supplicant

Correct Answer: AD

Section: (none)

Explanation

Explanation/Reference:

QUESTION 136

Which purpose does a spectrum analyzer serve during a site survey?

- A. Detect and measure RF energy on a frequency.
- B. Identify and monitor rogue APs in the environment
- C. Capture and save RF traffic to analyze it offline.
- D. Generate a list of interference reports.

Correct Answer: A

Section: (none)

Explanation

Explanation/Reference:

QUESTION 137

Which two options are requirements of real-time applications? (Choose two.)

- A. voice
- B. high packet loss
- C. web browsing

- D. low jitter
- E. low latency

Correct Answer: DE

Section: (none)

Explanation

Explanation/Reference:

QUESTION 138

What is the European Standard equivalent of the FCC?

- A. IEEE
- B. ISM
- C. ETSI
- D. ITU

Correct Answer: C

Section: (none)

Explanation

Explanation/Reference:

QUESTION 139

While undergoing a security audit, a network administrator is told to set up the WLANs with at least 128-bit encryption but also keeping the 802.11n speeds. What WLAN configuration would meet the requirements?

- A. Static WEP
- B. WPA-TKIP
- C. WPA2-AES
- D. CKIP

Correct Answer: C

Section: (none)

Explanation

Explanation/Reference:

QUESTION 140

Which is recommended minimum SNR for a data cell with a data rate of 54 Mb/s?

- A. 10
- B. 25
- C. 4
- D. 6

Correct Answer: B

Section: (none)

Explanation

Explanation/Reference:

QUESTION 141

On witch tab on the WLC web interface can the administrator change the AP power level?

- A. WLAN
- B. Management
- C. Controller
- D. Wireless

Correct Answer: D

Section: (none)

Explanation

Explanation/Reference:

QUESTION 142

Which two Cisco WLC management-access methods are available as the default setting? (Choose two.)

- A. Telnet
- B. HTTP
- C. SNMP
- D. SSH

E. HTTPS

Correct Answer: DE

Section: (none)

Explanation

Explanation/Reference:

QUESTION 143

Which tool can be used for active and passive site surveys?

- A. Fluke Networks AirMagnet Planner
- B. Ekahau Site Survey
- C. Fluke Networks AirMagnet Survey Pro
- D. Cisco Predictive RF Planner

Correct Answer: C

Section: (none)

Explanation

Explanation/Reference:

QUESTION 144

Which command is used to upgrade the operational code when upgrading a Cisco IOS-XE WLC?

- A. **software install source switch**
- B. **software install file path:code.bin**
- C. **software tftp://code.bin flash:/code.bin**
- D. **software expand running**

Correct Answer: B

Section: (none)

Explanation

Explanation/Reference:

QUESTION 145

Which three parameters must be configured for local EAP-FAST on the controller? (Choose three.)

- A. PAC
- B. client key
- C. NTP source
- D. TTL for PAC
- E. server key
- F. authority ID and information

Correct Answer: DEF

Section: (none)

Explanation

Explanation/Reference:

QUESTION 146

During which type of survey does the surveyor interact with the infrastructure?

- A. planning
- B. active
- C. passive
- D. predictive

Correct Answer: B

Section: (none)

Explanation

Explanation/Reference:

QUESTION 147

A company wants to implement wireless in all 20 remote office locations and wants centralized management of these remote sites. What application would meet the requirements?

- A. Cisco autonomous access points in FlexConnect mode
- B. Cisco point- to multi-point wireless bridging

- C. Split MAC architecture utilizing CAPWAP and WLC
- D. Control and Provisioning of Wireless Access Points

Correct Answer: C

Section: (none)

Explanation

Explanation/Reference:

QUESTION 148

Refer to the exhibit.



Which administrator role applies when the user logs into the Cisco Wireless LAN Controller?

- A. ReadOnly
- B. ReadWrite
- C. LobbyAdmin
- D. LocalAdmin

Correct Answer: C

Section: (none)

Explanation

Explanation/Reference:

QUESTION 149

Which signal does Cisco recommend using at the cell edge when performing a site survey for VoWLAN applications?

- A. -56 dBm
- B. -67 dBm
- C. -78 dBm
- D. -85 dBm

Correct Answer: B

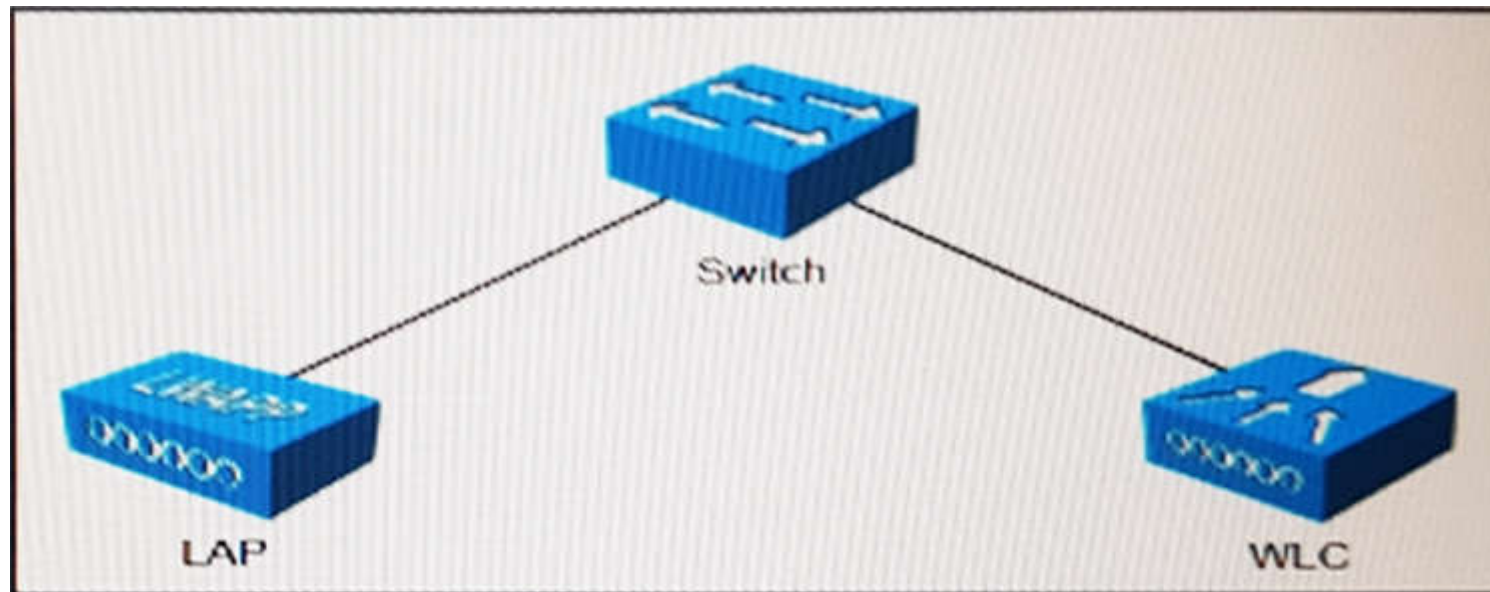
Section: (none)

Explanation

Explanation/Reference:

QUESTION 150

Refer to the exhibit.



Which three switch port types are valid for these connections? (Choose three.)

- A. routed port
- B. port-channel access
- C. access
- D. trunk
- E. port-channel trunk
- F. port-channel

Correct Answer: CDE

Section: (none)

Explanation

Explanation/Reference:

QUESTION 151

Which three criteria are used when choosing the type of external antenna to connect to an indoor AP? (Choose three.)

- A. potential interferers
- B. AP radio frequency
- C. PoE draw
- D. signal coverage area
- E. antenna manufacturer
- F. number of SSIDs

Correct Answer: ABD

Section: (none)

Explanation

Explanation/Reference:

QUESTION 152

A customer wants to implement a policy on a guest WLAN, in which clients must accept the company wireless policy and enter an email address to access the guest network. The company does not have access to RADIUS servers and wants the WLAN to use open Layer 2 security. Which Layer 3 security web policy must be enabled to meet these criteria?

- A. authentication
- B. web authorization on MAC filter failure
- C. conditional web redirect
- D. web pass-through

Correct Answer: D

Section: (none)

Explanation

Explanation/Reference:

QUESTION 153

Which two options are limitations when configuring basic security on an autonomous AP using the express security page setup? (Choose two.)

- A. Delete all the SSIDs.
- B. Edit the SSIDs.
- C. You cannot change the default SSID.
- D. You need multiple SSIDs.
- E. Use multiple authentication servers.

Correct Answer: BE

Section: (none)

Explanation

Explanation/Reference:

QUESTION 154

The IEEE 802.11n standard provides 40-MHz channels, improved MAC efficiency, and MIMO. Which three elements define the 802.11n implementation of MIMO? (Choose three.)

- A. dynamic frequency selection
- B. transmit beam forming
- C. channel bonding
- D. spatial multiplexing
- E. maximal ratio combining
- F. packet aggregation

Correct Answer: BDE

Section: (none)

Explanation

Explanation/Reference:

QUESTION 155

How many types of control frames are only used in PCF mode?

- A. 1
- B. 2
- C. 3
- D. 4

Correct Answer: C

Section: (none)

Explanation

Explanation/Reference:

QUESTION 156

An AP using version 8.0 broadcasts a Layer 3 CAPWAP discovery message on the local IP subnet.

Which step does the AP take next?

- A. Send a discovery request using locally stored information on the AP.
- B. Determine if the controller responses include the primary controller.
- C. Send a discovery request using DNS.
- D. Send a discovery request using DHCP option 43.

Correct Answer: A

Section: (none)

Explanation

Explanation/Reference:

QUESTION 157

You must resolve an issue in which an access point is not joining a controller. Which command can help you to troubleshoot the issue?

- A. **debug enable ap-name** from the AP
- B. **debug capwap events enable** from the AP
- C. **debug enable ap-name** from the controller
- D. **debug capwap events enable** from the controller

Correct Answer: D

Section: (none)

Explanation

Explanation/Reference:

QUESTION 158

When configuring a WLC to support multiple WLANs, which type of interface must be created?

- A. dynamic
- B. ap-manager
- C. virtual
- D. management

Correct Answer: A

Section: (none)

Explanation

Explanation/Reference:

QUESTION 159

Which three statements must be true for Cisco WLC to support roaming? (Choose three.)

- A. Controllers are in the same mobility group.
- B. Controllers operate in different LWAPP modes.
- C. ACLs are the same.
- D. Virtual interface IP addresses are the same.

- E. Controllers have different versions of code.
- F. Controllers need to have the same hostname.

Correct Answer: ADF

Section: (none)

Explanation

Explanation/Reference:

QUESTION 160

Which two access point modes support infrastructure MFP? (Choose two.)

- A. sniffer
- B. rogue detector
- C. bridge
- D. local
- E. FlexConnect

Correct Answer: DE

Section: (none)

Explanation

Explanation/Reference:

QUESTION 161

Which two methods of authentication are available for Local EAP?

- A. LDAP and RADIUS
- B. Local and TACASS
- C. LDAP and Local
- D. Local and RADIUS

Correct Answer: C

Section: (none)

Explanation

Explanation/Reference:

QUESTION 162

Which CAPWAP AP management-access method is available as the default setting?

- A. the console port and SSH
- B. only the console port
- C. SSH only
- D. the console port, SSH, and HTTPS

Correct Answer: B

Section: (none)

Explanation

Explanation/Reference:

QUESTION 163

An access point named Cisco AP is configured on a wireless controller. Which command must you use in the controller to view access point system messages?

- A. show ap eventlog Cisco_AP
- B. debug ap eventlog Cisco_AP
- C. config logging Cisco_AP
- D. show logging

Correct Answer: A

Section: (none)

Explanation

Explanation/Reference:

QUESTION 164

When using multiple SSIDs on a FlexConnect AP in local switching mode, how does the traffic of each SSID reach the 802.3 network?

- A. provide routing between them at the core so that the SSIDs can reach the internet
- B. configure 802.1q trunking on the Ethernet switch port that is connected to the AP
- C. configure the SSIDs on the WLC and it will regulate the traffic based on traffic type
- D. configure ACLs at the switch port that will allow all desired SSIDs to pass traffic

Correct Answer: B

Section: (none)

Explanation

Explanation/Reference:

QUESTION 165

When an AP is in its default configuration mode and connects to a Cisco WLC, which methods are available for remote management access to an AP?

- A. SSH and Telnet are available only after configuration by a Cisco WLC version 7.0.
- B. SSH and Telnet
- C. HTTPS, and SSH
- D. SSH only

Correct Answer: A

Section: (none)

Explanation

Explanation/Reference:

QUESTION 166

What is the channel width of an 802.11b wireless channel?

- A. 10 MHz
- B. 20 MHz
- C. 5 MHz
- D. 22 MHz

Correct Answer: D

Section: (none)

Explanation

Explanation/Reference:

QUESTION 167

Which three access point modes service clients? (Choose three.)

- A. FlexConnect
- B. bridge
- C. sniffer
- D. local
- E. monitor
- F. SE-Connect

Correct Answer: ABD

Section: (none)

Explanation

Explanation/Reference: