

## Passit4sure.HP2-Z34.60 questions

Number: HP2-Z34  
Passing Score: 800  
Time Limit: 120 min  
File Version: 4.8



### HP2-Z34

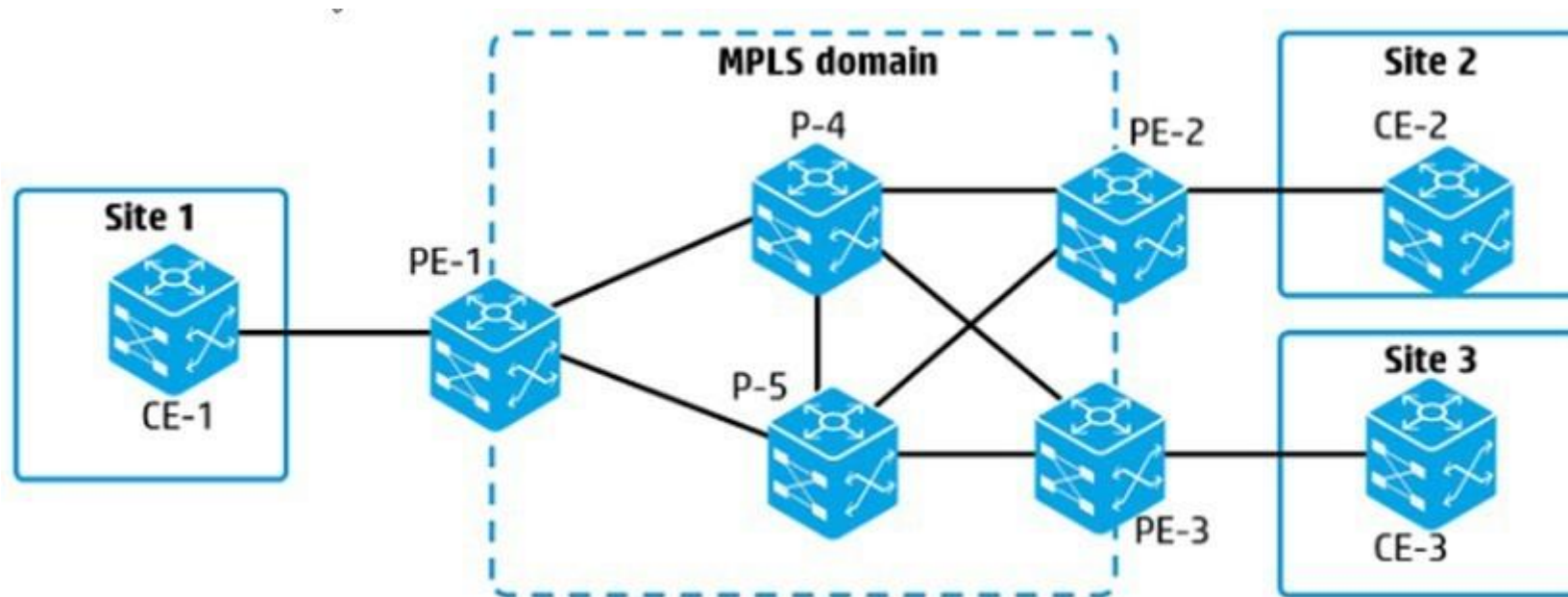
#### Building HP FlexFabric Data Centers

- By this you can will be able to determine some troubleshooting techniques which you need to learn as it will help you scenarios on the exam . So I'm pretty happy with it.
- I'm sure glad that I used it. Even though I knew the material, the exam questions were worded in a very tricky way. These tests got me over that last hump and I easily passed the written exam.
- I do know that the practice exam is damn close to the real thing.
- I liked it very much. The content in both products provides exactly what you need to pass.
- With the help of this training, you will become proficient to seize all the concepts related with your specific IT Certification exam.

## Exam A

### QUESTION 1

Refer to the exhibit



An MPLS VPLS solution (non-hierarchical) will connect the sites shown in the exhibit. Which pseudo wire (PW) connections must the administrator configure?

- A. A full mesh of PWs between every PE router that connects to a site and every P router between them
- B. A hub-and-spoke set of PWs between one P router and all PE routers that connect to a site
- C. A full mesh of PWs between every PE router that connects to a site
- D. A hub-and-spoke set of PWs between one PE router and other PE routers that connect to a site

**Correct Answer:** D

**Section:** (none)

**Explanation**

**Explanation/Reference:**

Explanation:

**QUESTION 2**

An administrator is configuring an HP switch to run SPBM. Which Spanning Tree Protocol (STP) configuration is required?

- A. Disable STP.
- B. Ensure that the switch with the lowest IS-IS router ID has the lowest bridge priority.
- C. Set the spanning tree mode to ECT.
- D. Map all B-VLANs to MSTP instance 4092

**Correct Answer:** D

**Section:** (none)

**Explanation**

**Explanation/Reference:**

Explanation:

**QUESTION 3**

An administrator creates two VPN instances on an HP Comware switch, in addition to the public instance. The switch implements routing protocols and MPLS. Which statement is correct about the routing tables and Label Forwarding Information Bases (LFIBs) maintained by the switch?

- A. The switch uses a single routing table and maintains a separate LFIB for each VPN instance
- B. The switch maintains a separate routing table and LFIB for each VPN instance, but the public tables automatically include entries from the other instances.
- C. The switch maintains a separate routing table and LFIB for each VPN instance.
- D. The switch maintains a separate routing table for each VPN instance and uses a single LFIB

**Correct Answer:** D

**Section:** (none)

**Explanation**

**Explanation/Reference:**

real answer.

**QUESTION 4**

What is the purpose of the nickname in TRILL switch settings?

- A. The nickname identifies the TRILL region and must match on every TRILL RBridge in the region.
- B. Administrators can use the nicknames to identify switches in CLI output.
- C. The nickname is the first factor for electing a root bridge
- D. TRILL RBridges use the nicknames as source and destination addresses in TRILL headers

**Correct Answer:** D

**Section:** (none)

**Explanation**

**Explanation/Reference:**

definite answer.

#### **QUESTION 5**

Several VPN instances have been set up on an HP Comware switch. What should the administrator do to ensure that no VPN instance uses up too many switch resources?

- A. Apply a service policy to each instance to assign that instance a percentage of resources
- B. Bind each instance to a specific port group or ASIC
- C. Set a maximum number of routes that each instance can have in its routing table.
- D. Set a CPU weight for each VPN instance to control how much of the CPU the instance can use.

**Correct Answer:** A

**Section:** (none)

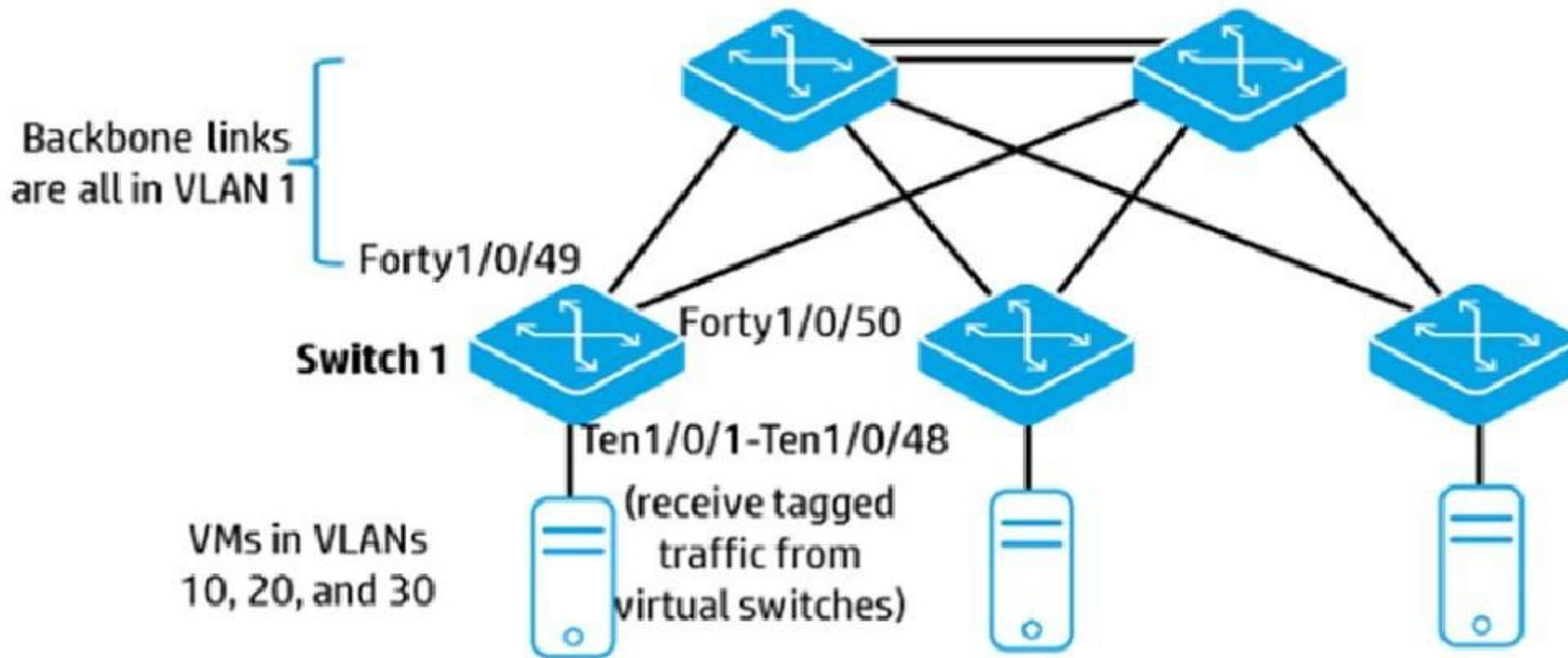
**Explanation**

**Explanation/Reference:**

Explanation:

#### **QUESTION 6**

Refer to the exhibit



The company wants to use TRILL in the backbone links shown in the exhibit. Servers use VLANs 10, 20, and 30 and should be able to communicate across the backbone. On which Switch 1 interfaces should the administrator enable TRILL?

- A. VLAN interface 1 only
- B. VLAN interfaces 1, 10, 20, and 30
- C. interfaces Forty1/0/49 and Forty1/0/50 only
- D. interfaces Ten1/0/1 to Ten1/0/48, and Forty1/0/49 and Forty1/0/50

**Correct Answer: C**

**Section: (none)**

## Explanation

### Explanation/Reference:

Explanation:

### QUESTION 7

Refer to the exhibit

Exhibit 1

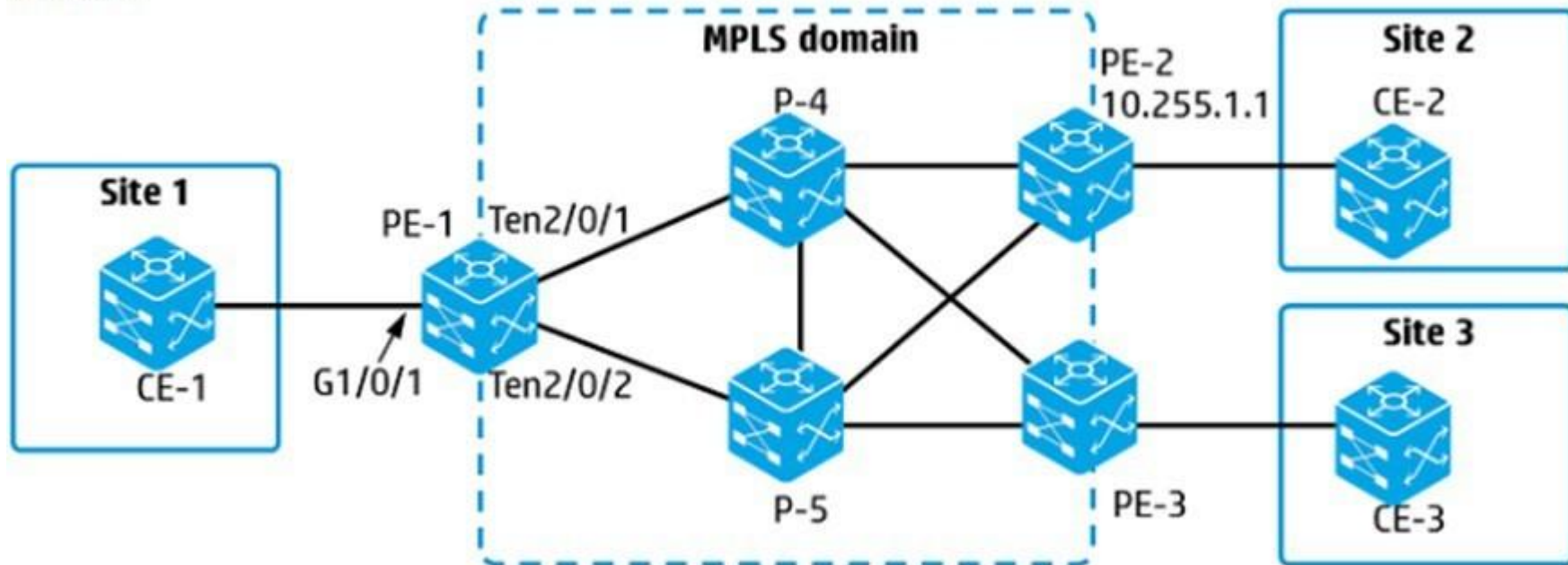


Exhibit 2

```
interface GigabitEthernet 1/0/1
 service-instance 1
 xconnect-group Site1toSite2
  ac interface GigabitEthernet1/0/1 service-instance 1
  peer 10.255.1.1 pw-id 2
```

An administrator is setting up MPLS Layer 2 VPN connections between several customer sites and wants to send traffic that arrives on G1/0/1 with

VLAN tag 102 to Site 2. Traffic with a different tag will be sent to a different site. How should the administrator implement this'?

- A. Remove service-instance1 from interface G1/0/1 and add it to VLAN 102
- B. Set the encapsulation for service-instance 1 to S-VLAN 102
- C. Set the peer PW outer label to 102 in xconnect-group Site1toSite2.
- D. Set the peer PW inner label to 102 in xconnect-group Site1toSite2.

**Correct Answer:** B

**Section:** (none)

**Explanation**

**Explanation/Reference:**

Explanation:

#### **QUESTION 8**

Which HP solution is an example of network function virtualization (NFV)?

- A. HP 12900 Series Switch
- B. HP 5900CP Series Switch
- C. HP IRF virtual device
- D. HP Virtual Services Router (VSR)

**Correct Answer:** A

**Section:** (none)

**Explanation**

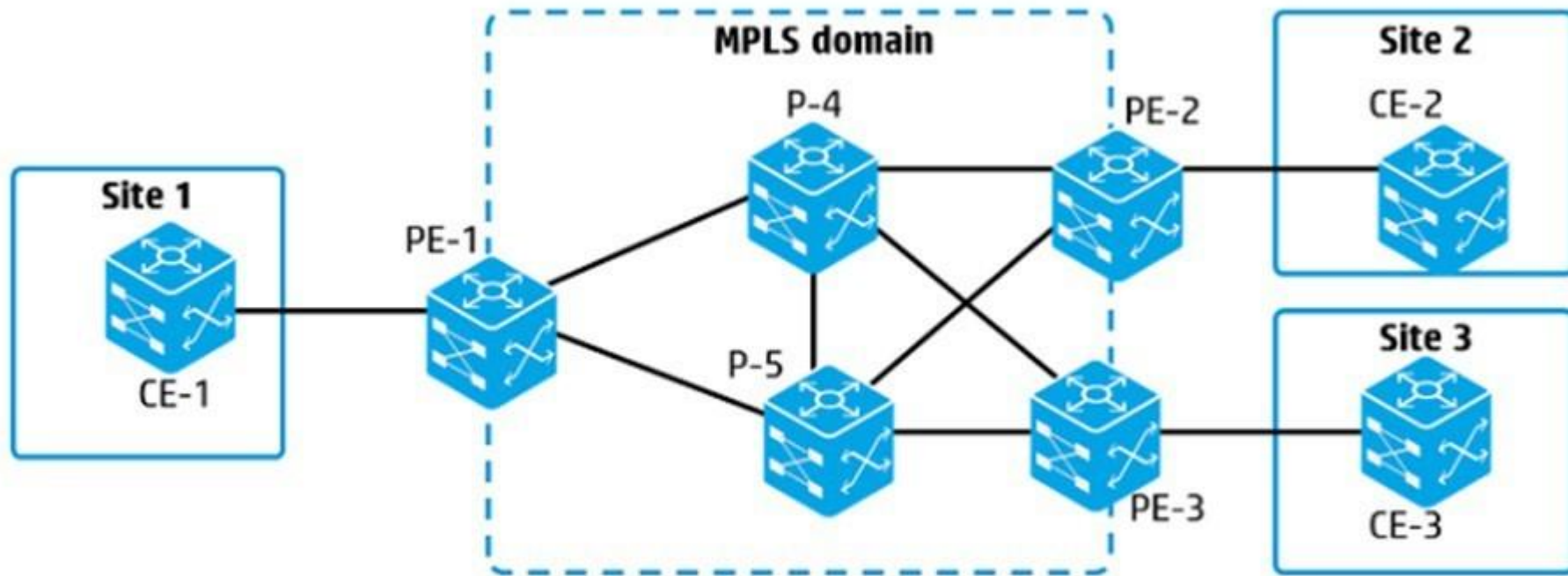
**Explanation/Reference:**

Explanation:

#### **QUESTION 9**

Refer to the exhibit





In the exhibit, the devices labeled PE and P:

- use OSPF
- have established an MPLS domain.
- use LDP.
- have established a Martini Layer 2 VPN between Sites 1 and 2

VPN traffic is using the link between PE-1 and P-4, and this link fails.

What happens to the VPN traffic?

- A. It is disrupted for this particular site-to-site connection until the link is fixed
- B. It fails over to the link between PE-1 and P-5 only //administrators created a backup virtual circuit (VC) from PE-1 to
- C. It fails over to the link between PE-1 and P-5 only if administrators created two virtual circuits (VCs) between PE-1



D. and PE-2.

E. It fails over to the link between PE-1 and P-5. The failover is automatically handled by MPLS, LDP, and OSPF

**Correct Answer:** A

**Section:** (none)

**Explanation**

**Explanation/Reference:**

Explanation:

#### **QUESTION 10**

An HP Comware switch port is being connected to a server Converged Network Adaptor (CNA). The CNA and the switch port need to communicate about parameters for various priority flow control (PFC) and bandwidth control mechanisms. How does the administrator enable these communications?

- A. Enable PFC globally and then enable PFC on the switch port
- B. Enable the Fibre Channel (FC) fabric port function on the switch port and then set the port as an F- port.
- C. Enable Ethernet Virtual Bridging (EVB) on the switch port.
- D. Enable LLDP globally and then enable Data Center Bridging eXchange (DCBX) TLVs on the switch port

**Correct Answer:** D

**Section:** (none)

**Explanation**

**Explanation/Reference:**

Explanation:

#### **QUESTION 11**

Which advantage does a VPLS solution offer over a simple MPLS Layer 2 VPN solution?

- A. provides data integrity and privacy for the company traffic
- B. provides MAC learning for VLANs extended across the MPLS region
- C. allows for a hub and spoke pseudo wire (PW) configuration instead of a full mesh configuration
- D. extends Layer 2 connectivity across an IP network that uses non-Ethernet media

**Correct Answer:** C

**Section:** (none)

**Explanation**

**Explanation/Reference:**

Explanation:

**QUESTION 12**

An administrator binds VLAN interface 10 to VPN instance "TenantA" on an HP Comware switch by using this configuration:

```
interface Vlan-interface 10  
ip address 10.1.10.1 255.255.255.0
```

How does the administrator's action affect the interface IP address?

- A. The interface loses the IP address, and the administrator must configure the IP address on this interface again.
- B. The IP address remains 10.1.10.1/24 but is extended with the Route Distinguisher (RD) and can now be assigned to an interface in another VPN instance.
- C. The interface loses the IP address and the administrator must map the interface to 10.1 10.1/24 from the VPN instance context
- D. The IP address remains 10.1 10.1/24. but now this subnet can also be assigned to an interface in another VPN instance.

**Correct Answer:** D

**Section:** (none)

**Explanation**

**Explanation/Reference:**

Explanation:

**QUESTION 13**

Multiple data centers connect over an HP EVI network. IPv4 servers in the data centers use Microsoft network load-balancing and need to send multicasts to each other across EVI links.

They do not use IGMP to join the multicast groups. What must the administrator do?

- A. Configure selective flooding for the multicast group addresses on the EVI tunnel interfaces
- B. Enable Protocol Independent Multicasting (PIM) on the EVI tunnel interfaces.
- C. Enable IGMP proxy on the EVI tunnel interfaces. I^
- D. Enable Multicast Learner Discovery (MLD) on the EVI tunnel interfaces.

**Correct Answer:** A

**Section:** (none)

**Explanation**

**Explanation/Reference:**

good answer.

**QUESTION 14**

Refer to the exhibit

```
<PE-1> display mpls ldp lsp
Status Flags: * - stale, L - liberal
Statistics:
```

FECs: 4	Ingress LSPs: 1	Transit LSPs: 1	Egress LSPs: 3	
FEC	In/Out	Label	Nextthop	OutInterface
10.255.1.1/32	-/3		10.1.1.1	vlan17
	1151/3		10.1.1.1	vlan17
10.255.2.2/32	3/-			
	-/1151(L)			
10.1.10.0/24	-/1150		10.1.1.1	vlan17
10.1.20.0/24	1152/-			

PE-1 receives an IP packet that is destined to 10.1.10.10 and does not have an MPLS header. What does PE-1 do?

- A. drops the packet
- B. adds an MPLS header without a label and forwards the packet to 10.1.1.1 on VLAN 17
- C. adds an MPLS header with label 1150 and forwards the packet to 10.1.1.1 on VLAN 17
- D. forwards the packet to 10.1.1.1 on VLAN 17 without an MPLS header

**Correct Answer:** A

**Section:** (none)

**Explanation**

**Explanation/Reference:**

Explanation:

#### QUESTION 15

An administrator configures an HP Comware switch to support FCoE in Fibre Channel Forwarder (FCF) mode. A switch interface connects to a server Converged Network Adapter (CNA) which sends normal data and storage traffic. What is the correct configuration for this port?

- A. FC port in NP mode
- B. bound to a VFC interface, which is in F mode
- C. bound to a VFC interface, which is in E mode
- D. FC port in F mode

**Correct Answer:** A

Section: (none)

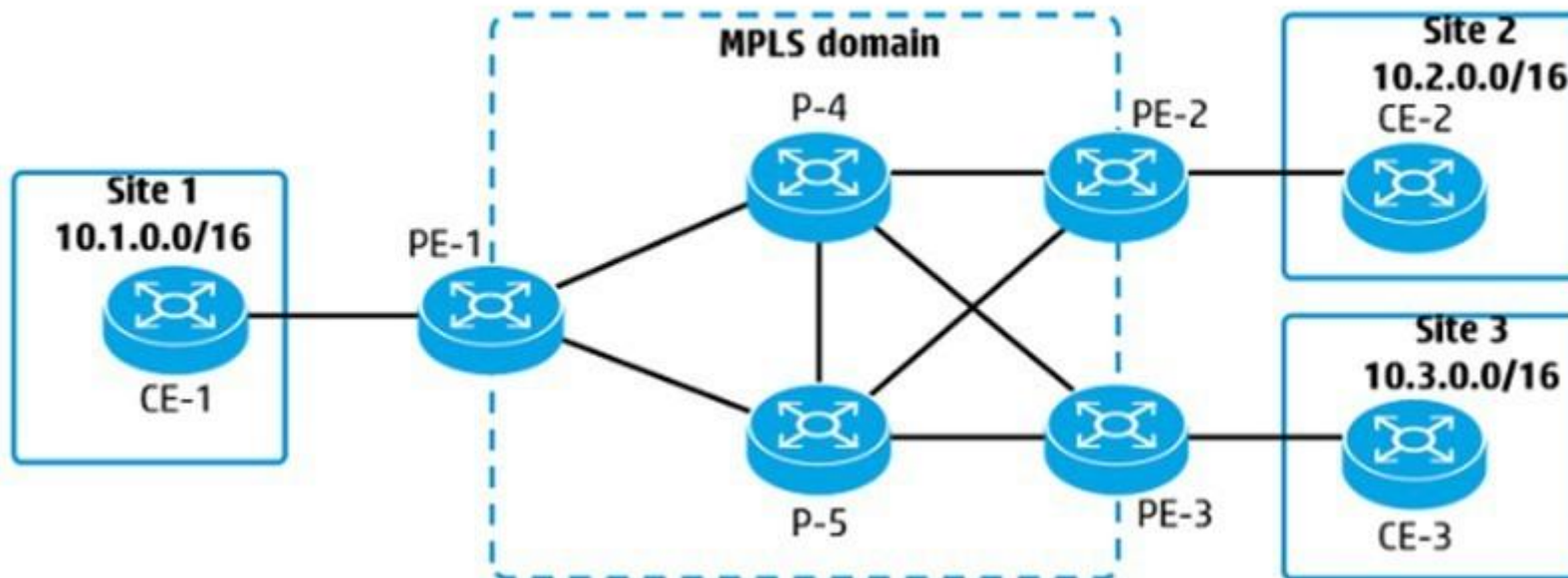
Explanation

Explanation/Reference:

Explanation:

#### QUESTION 16

Refer to the exhibit



An administrator is planning an MPLS solution and wants to make sure that traffic from 10.1.0.0/16 to 10.2.0.0/16 takes the best path. The solution is not using Traffic Engineering (TE). How does PE-1 choose between the label advertised for 10.2.0.0/16 by P-4 and by P-5?

- A. based on which peer is the higher priority LDP peer
- B. based on which peer is the next hop in the best route in the IP routing table
- C. based on which link has the lower LDP cost
- D. based on which link has the lower MPLS cost

**Correct Answer: B**

Section: (none)

### **Explanation**

#### **Explanation/Reference:**

Explanation:

#### **QUESTION 17**

Why might a customer decide to use MDC instead of Multi-VPN-Instance CE (MCE)?

- A. to isolate tenants while maintaining the ability to leak routes in and out of a tenant instance
- B. to integrate with Intelligent Resilient Framework (IRF)
- C. to manage all routing and switch functions with a single management team
- D. to provide further segmentation between tenants at the hardware or ASIC level

**Correct Answer:** A

**Section:** (none)

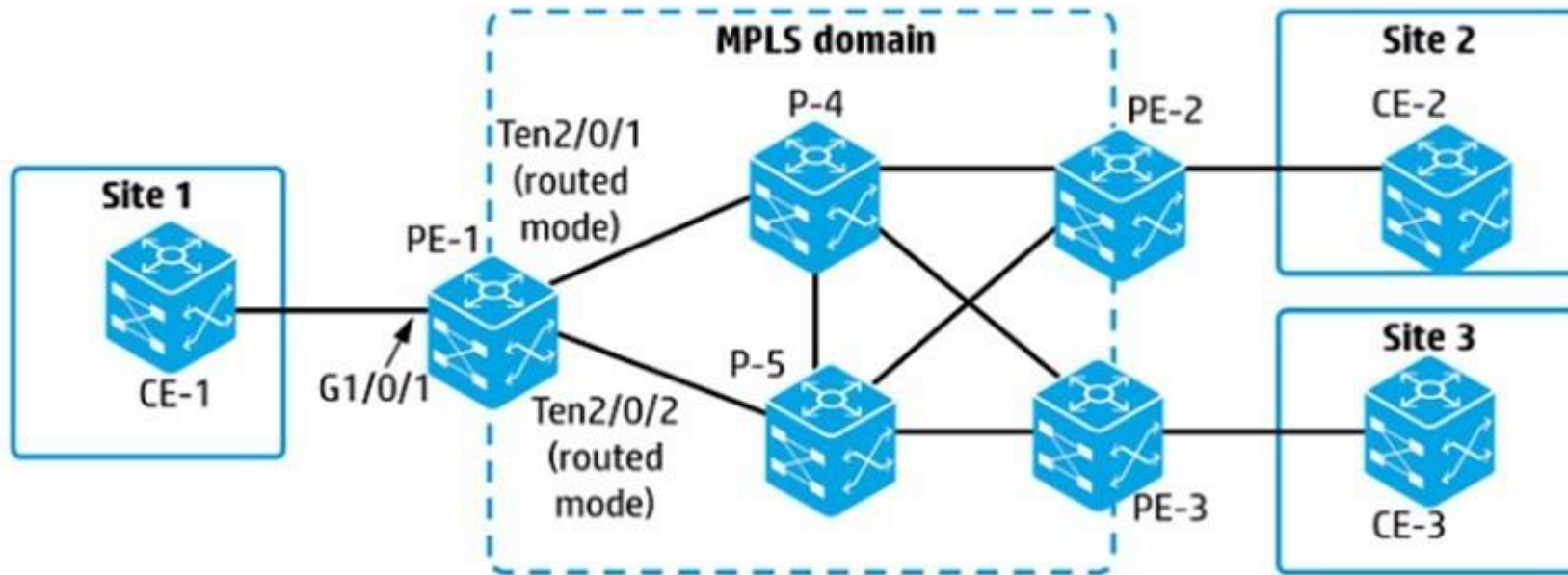
### **Explanation**

#### **Explanation/Reference:**

Explanation:

#### **QUESTION 18**

Refer to the exhibit



An administrator is configuring an MPLS VPLS Martini solution on PE-1. The VPLS solution should connect customer A sites 1, 2, and 3. Where should the administrator specify the LDP peers and pseudo wire (PW) label for the PWs?

- A. in service instances on interfaces Ten2/0/1 and Ten2/0/2
- B. in a Virtual Switch Instance (VSI) for customer A
- C. in a service instance on interface G1/0/1
- D. in a global cross-connect group

**Correct Answer:** A

**Section:** (none)

**Explanation**

**Explanation/Reference:**

Explanation:

#### QUESTION 19

An administrator configures an HP Comware switch to support FCoE in Fibre Channel Forwarder (FCF) mode. A switch interface connects to a server FC host bus adapter (HBA). What is the correct configuration for this port?

- A. bound to a VFC interface, which is in F mode
- B. bound to a VFC interface, which is in E mode
- C. FC port >n F mode
- D. FC port in NP mode

**Correct Answer:** B

**Section:** (none)

**Explanation**

**Explanation/Reference:**

fine answer.

#### **QUESTION 20**

What must be used when implementing the backbone multicast feature to isolate multicasts in the SPBM region?

- A. maximum of two Equal Cost Tree (ECT) algorithms
- B. single I-SID for all VLANs belonging to the same customer
- C. head-end replication for multicasts
- D. odd-numbered VLAN IDs for B-VLANs

**Correct Answer:** C

**Section:** (none)

**Explanation**

**Explanation/Reference:**

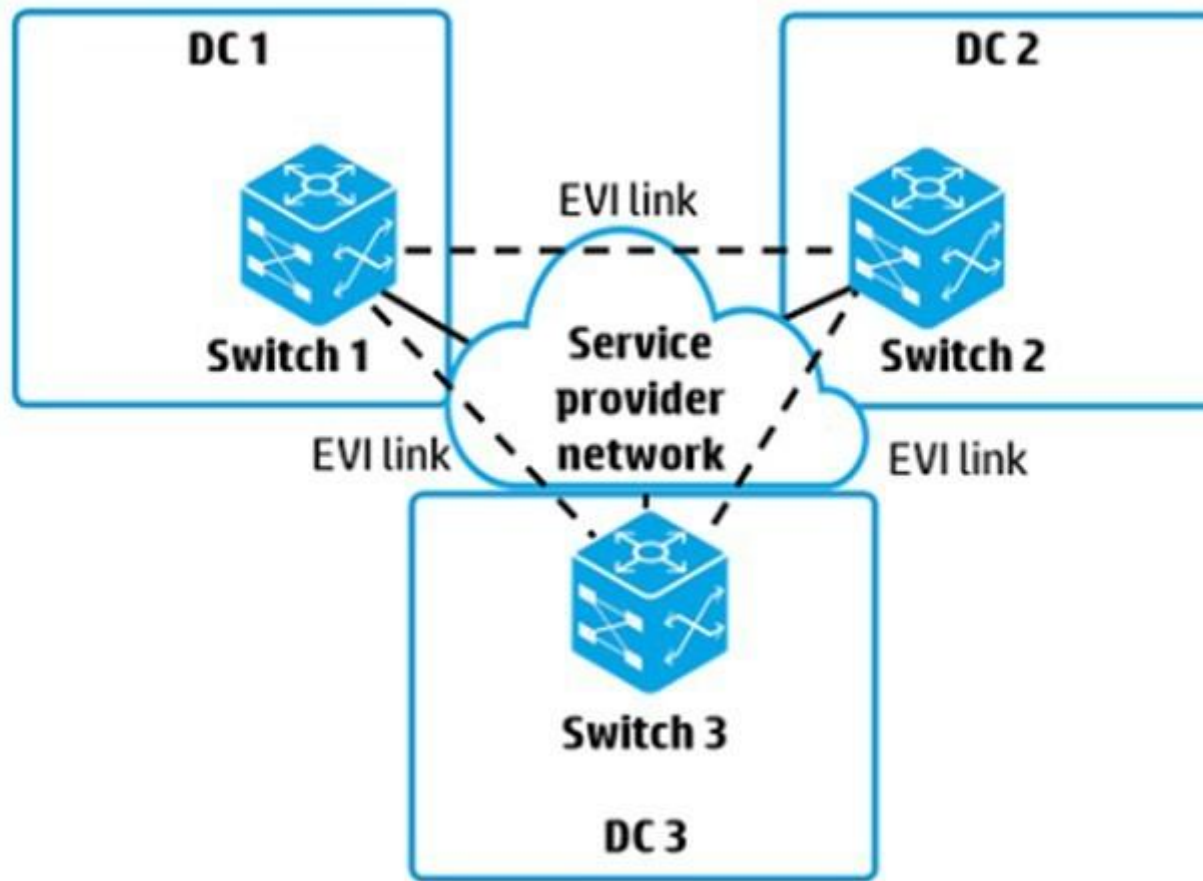
Explanation:

#### **QUESTION 21**

Refer to the exhibit



Exhibit 1



## Exhibit 2

```
#Partial config on Switch 1
interface GigabitEthernet 1/0/1
  port access vlan 100
interface Vlan-interface100
  ip address 10.1.0.2 255.255.255.252
interface tunnel 1 mode evi
  source 10.1.0.2
  evi network-id 10
  evi extend-vlan 100
  evi neighbor-discovery server enable
  evi neighbor-discovery client enable 10.2.0.2
```

An EVI network is being set up as shown in Exhibit 1. Part of Switch 1's configuration is shown in Exhibit 2. All other switches are configured correctly and can reach each other. The EVI links should carry traffic in VLANs 4 to 20; however, when the administrator tries to ping a VLAN 4 device in DC 2 from DC 1, the ping fails.

What should the administrator do?

- A. Change the tunnel source IP address to the Switch 1 router ID.
- B. Add tunnel destination IP addresses to the tunnel interface.
- C. Either disable the neighbor-discovery server setting or remove the client setting.
- D. Configure the tunnel interface to extend VLANs 4 to 20 instead of VLAN 100.

**Correct Answer:** D

**Section:** (none)

**Explanation**

**Explanation/Reference:**

Explanation:

## QUESTION 22

Which statement is correct about a Fibre Channel (FC) node-port (N-port) in a Storage Area Network (SAN) fabric topology?

- A. It is a port on a SAN switch that connects to an initiator or target.
- B. It is a port on a SAN switch that connects to a target but never to an initiator.
- C. It is a port on an initiator but never a target, and it connects to an extension port (E-port).

D. It is a port on an initiator or a target, and it connects to a fabric port (F-port)

**Correct Answer:** C

**Section:** (none)

**Explanation**

**Explanation/Reference:**

Explanation:

#### **QUESTION 23**

An HP Comware switch supports FCoE in Fibre Channel Forwarder (FCF) mode. A switch interface Ten1/0/1 connects to a server FCoE Converged Network Adapter (CNA). The CNA transmits normal data traffic, which is tagged for VLANs 4 and 8. and storage traffic for VSAN 2, which is associated with VLAN 20. What is a correct port type and VLAN configuration for Ten 1/0/1?

- A. a hybrid port that has PVID 1 and defines VLANs 4 and 8 as tagged
- B. a trunk port that has PVID 20 and permits VLANs 4. 8. and 20
- C. a hybrid port that has PVID 1. defines VLAN 20 as untagged, and defines VLANs 4 and 8 as tagged
- D. a trunk port that has PVID 1 and permits VLANs 4. 8. and 20

**Correct Answer:** D

**Section:** (none)

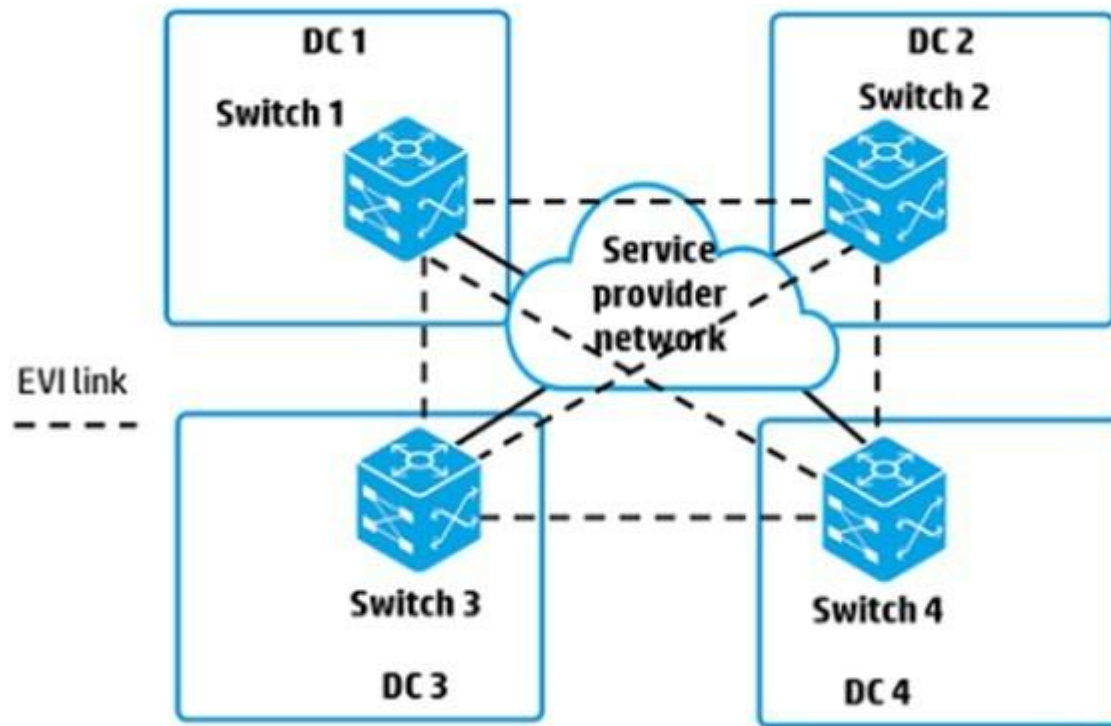
**Explanation**

**Explanation/Reference:**

truthful.

#### **QUESTION 24**

Refer to the exhibit



An administrator is creating the EVI network shown in the exhibit. Switches 1 and 2 are configured as ENDP servers, and Switch 3 is configured as an ENDP client to the ENDP servers. Which configuration is correct for the EVI tunnel interface on Switch 3?

- A. The source IP address is the switch router ID; the addresses for switches 1, 2, and 4 need to be set as destinations
- B. The source IP address is the address on the connection to the service provider; no other destination IP addresses need to be set.
- C. The source IP address is the address on the connection to the service provider; the addresses for switches 1, 2, and 4 need to be set as destinations
- D. The source IP address is the switch router ID; no other destination IP addresses need to be set.

**Correct Answer:** C

**Section:** (none)

**Explanation**

**Explanation/Reference:**

Explanation:

**QUESTION 25**

An administrator is implementing MDC and wants to create a redundant solution where each MDC uses two physical HP Comware switches. What is the correct setup process?

- A. Set up the MDCs on both switches. Configure Intelligent Resilient Framework (IRF) between the two switches on each MDC separately.
- B. Combine the two switches in an Intelligent Resilient Framework (IRF) virtual device Set up the MDCs on this device.
- C. Set up the MDCs on both switches. Use the Admin MDC to configure Intelligent Resilient Framework (IRF) on the two switches
- D. Enable MDC on both switches in resiliency mode Configure the MDCs on each device using the same MDC IDs on each Connect the devices.

**Correct Answer:** D

**Section:** (none)

**Explanation**

**Explanation/Reference:**

Explanation:

**QUESTION 26**

An HP IRF virtual switch with two members is implementing TRILL. The administrator wants to ensure that the master can fail without causing topology changes or changes in forwarding tables in the TRILL region. Which setting helps support this requirement?

- A. Graceful Restart for TRILL
- B. Bidirectional Forwarding Detection (BFD) Multi-Active Detection (MAD) for the IRF link
- C. calculation of at least two trees
- D. non-stop-forwarding for TRILL

**Correct Answer:** B

**Section:** (none)

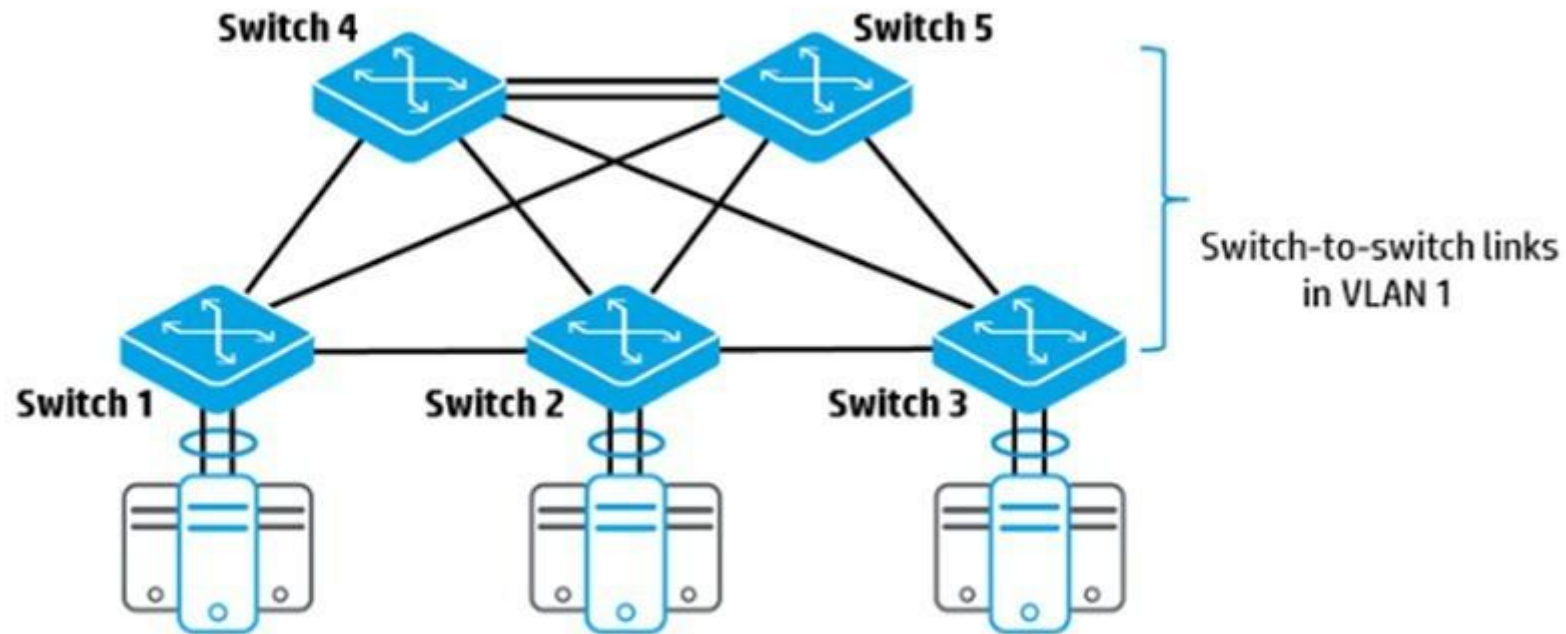
**Explanation**

**Explanation/Reference:**

Explanation:

**QUESTION 27**

Refer to the exhibit



An administrator wants these switches to establish a TRILL region. TRILL is enabled globally and nicknames are set. What must the administrator do so that each TRILL switch (RBridge) finds the best path to all other TRILL switches?

- A. Configure IS-IS on VLAN 1 on all the switches.
- B. Enable TRILL with the correct link-type on each switch-to-switch port
- C. Configure DRB priorities on all switch-to-switch links.
- D. Create a Virtual Service Instance (VSI) on each switch and define the other switches as TRILL peers.

**Correct Answer:** B

**Section:** (none)

**Explanation**

**Explanation/Reference:**

Explanation:

#### QUESTION 28

A company merger created a situation in which some network segments are using overlapping IP addresses. Administrators want to keep the

overlapping addresses and isolate the segments. A core router connects to devices in both segments and routes some traffic for both.

What allows this router to route the traffic without conflict?

- A. VPLS
- B. Provider Backbone Bridging (PBB)
- C. Multi-VPN-Instance CE (MCE)
- D. EVI

**Correct Answer:** C

**Section:** (none)

**Explanation**

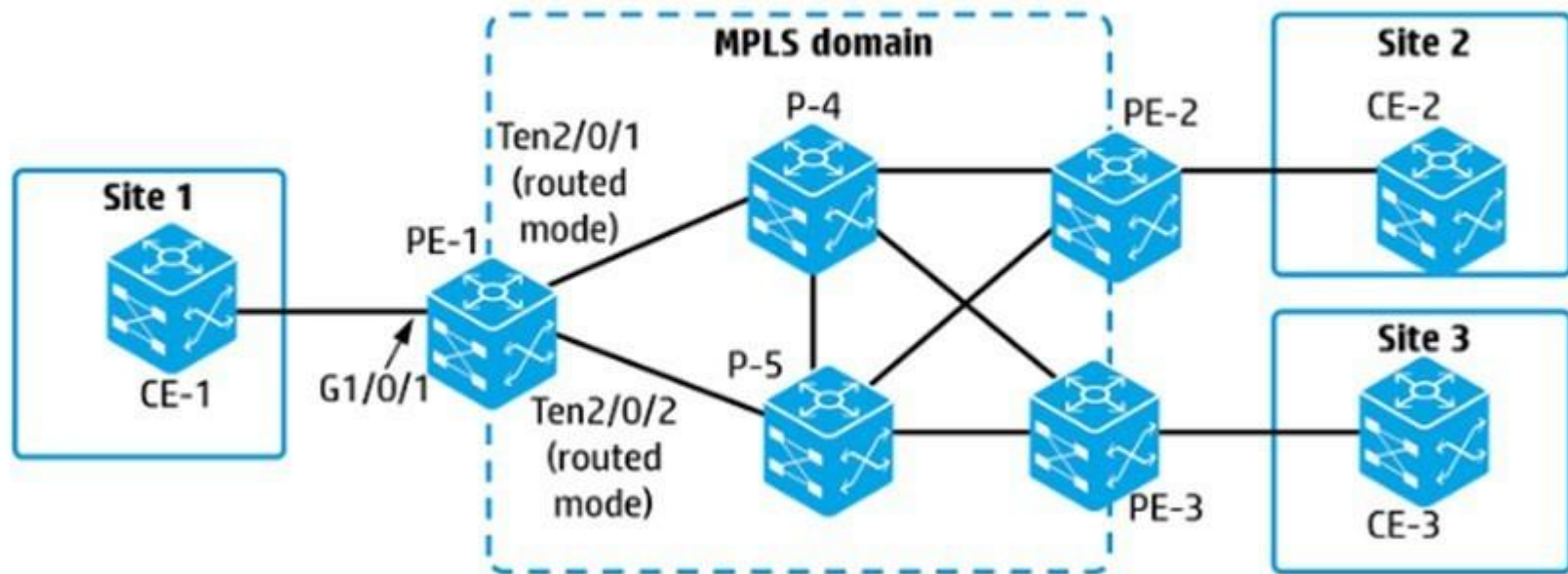
**Explanation/Reference:**

Explanation:

**QUESTION 29**

Refer to the exhibit





An MPLS Layer 2 VPN is being implemented between Sites 1 and 2. The administrator wants PE-1 and PE-2 to set up the Virtual Circuit (VC) dynamically by using the Martini method. What is required to accomplish this goal?

- A. redistribution of Border Gateway Protocol (BGP) routes into Open Shortest Path First (OSPF) on PE-1 and PE-2
- B. remote LDP session between PE-1 and PE-2
- C. iPSec tunnel between PE-1 and PE-2
- D. VPN instance with the same route distinguisher (RD) on PE-1 and PE-2

**Correct Answer:** D

**Section:** (none)

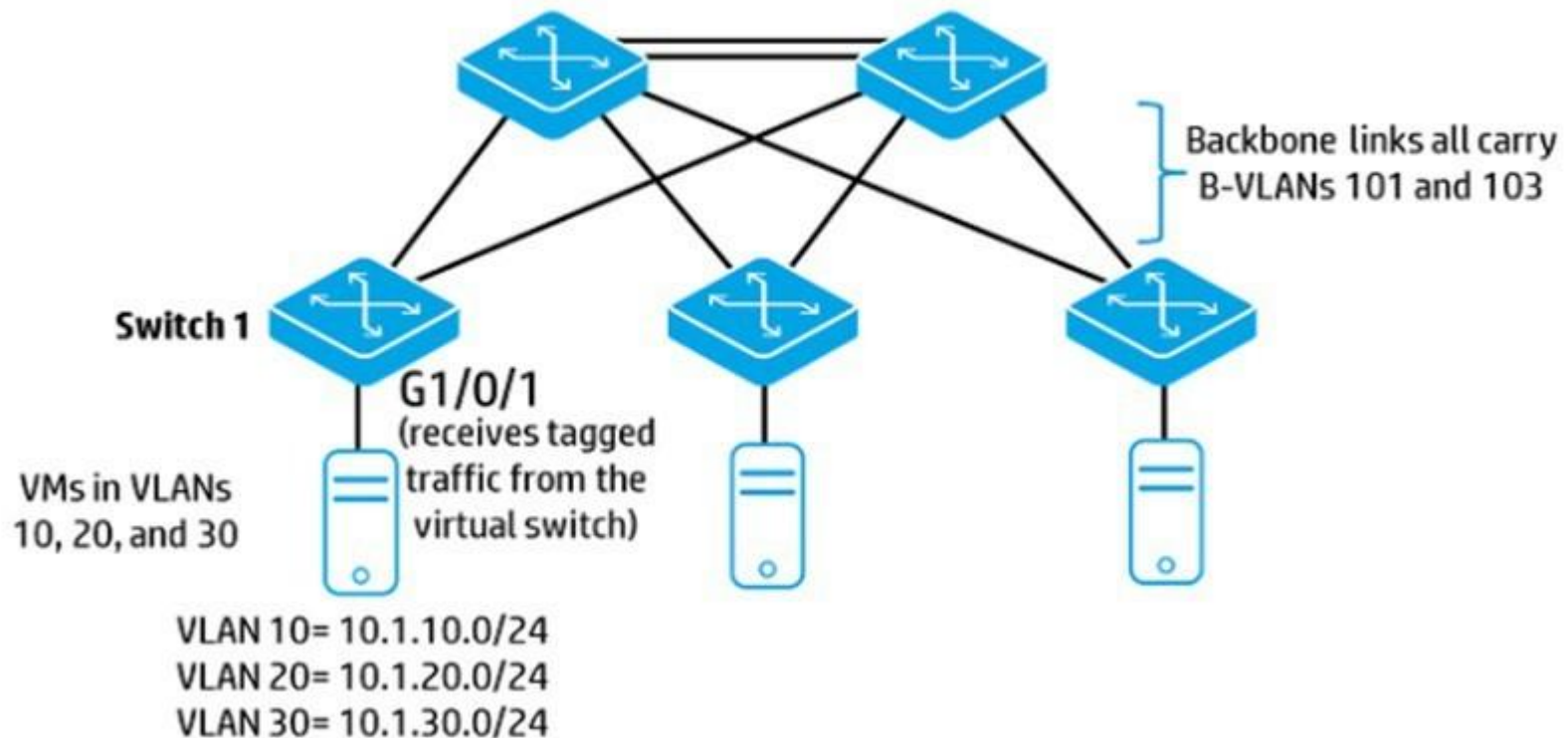
**Explanation**

**Explanation/Reference:**

Explanation:

**QUESTION 30**

Refer to the exhibit



SPBM is being implemented on the backbone links shown in the exhibit. The servers in VLAN 10 (10.1.10.0/24) should be able to communicate at Layer 2 across the backbone. In the vsi section of the configuration on Switch 1, which logical components are required?

- A. the S-VLAN to which the servers are assigned and the ECT algorithm for distributing their traffic
- B. a unique I-SID for the servers and the B-VLAN that should carry their traffic
- C. the S-VLAN to which the servers are assigned and the B-VLAN that should carry their traffic
- D. a unique I-SID for the servers and the S-VLAN to which the servers are assigned

**Correct Answer:** C

**Section:** (none)

**Explanation**

**Explanation/Reference:**

Explanation:

### QUESTION 31

Which statement is correct about a Fibre Channel (FC) World Wide Name (WWN)?

- A. It is a hardware specific address for a LUN on a storage disk and can be used to direct FC frames to targets.
- B. It is a hardware specific address for an FC device and can be used to place the device in zones.
- C. It is assigned to an FC device based on its location and can be used to deliver FC frames
- D. It is assigned to an FC N-port as its switch joins the fabric and can be used to route FC frames

**Correct Answer:** B

**Section:** (none)

**Explanation**

**Explanation/Reference:**

actual answer.

### QUESTION 32

Refer to the exhibit

```
zone name 1
  member zone-alias server1
zone name 2
  member zone-alias target1
zone name 3
  member zone-alias target2
zone name 4
  member zone-alias target3
zone name 5
  member zone-alias target1
  member zone-alias target2
zone name 6
  member zone-alias server1
  member zone-alias target1
  member zone-alias target2
```

An HP Comware switch is configured to support FCoE in Fibre Channel Forwarder (FCF) mode. Server1 should be able to discover storage target1 and target2. but not target3. Assume that the zone- aliases have been configured to reference the FC devices correctly

Which zone(s) should be added to the active zoneset?

- A. zone 1, zone 2, and zone 3
- B. zone 1 and zone 5
- C. zone 4
- D. zone 6

**Correct Answer:** D

**Section:** (none)

**Explanation**

**Explanation/Reference:**

Explanation:

**QUESTION 33**

Refer to the exhibit

```
<Switch> display fc domain vsan 2
Domain Information of VSAN 2:

Running table information:
  state: stable
  Switch WWN: 10:00:cc:3e:5f:6d:fc:b1
  Fabric name: 10:00:cc:3e:5f:6d:fc:b1
  Priority: 128
  Domain ID: 10
Configuration information:
  Domain configure: Enable
  Domain auto-reconfigure: Disabled
  Fabric name: 10:00:cc:3e:5f:6d:fc:b1
  Priority: 128
  Domain ID: 10 (preferred)
Principal switch running time information:
  Priority: 128

<Switch> display zone status vsan 2
VSAN 2:
  Mode: basic
  Default zone: deny
  Distribute: active only
  Hard-zoning: enabled
  Full zoning database
    Zonesets: 0, Zones: 0, Zone-aliases: 0
  status: free
```

A VSAN is being set up on an HP Comware switch that will connect to server Converged Network Adapters (CNAs) and storage systems. The administrator is checking the configuration of the VSAN with display commands. The exhibit shows the results.

What is a potential issue?

- A. The current zoning configuration does not permit any communication.
- B. The fabric name has been set to the same ID as the switch WWN, which causes conflicts.
- C. The distribute mode for zones has been set to active only, which can cause issues with redundancy.
- D. The domain ID has been set manually to a preferred ID, but this switch does not have the highest priority.

**Correct Answer: C**

**Section: (none)**

## Explanation

### Explanation/Reference:

Explanation:

### QUESTION 34

HP Comware Switch 1 connects to servers with Converged Network Adapters (CNAs) that send data and FCoE storage traffic. Switch 1 should forward all FCoE traffic to an upstream FCoE switch. Switch 2 will handle all the FLOGI requests, zoning, and FC traffic forwarding.

What is the correct FCoE mode setting for Switch 1?

- A. NPV
- B. FCF
- C. disabled
- D. hybrid

**Correct Answer:** B

**Section:** (none)

**Explanation**

### Explanation/Reference:

Explanation:

### QUESTION 35

An administrator configures two VSANs on an HP Comware IRF virtual switch. The IRF members connect to a server with two Converged Network Adapters (CNAs). One CNA is connected to VSAN 1, and the other is connected to VSAN 2. The storage target for the server is also connected to VSAN 1 and VSAN 2.

What is required for this setup to work?

- A. The HP switch must place the ports connected to the server CNAs in a link aggregation set to static mode
- B. The server CNAs must support multi-path I/O (MPIO)
- C. The HP switch must place the ports connected to the server CNAs in a link aggregation set to dynamic (LACP) mode
- D. The HP switch must support multi-path I/O (MPIO).

**Correct Answer:** A

**Section:** (none)

**Explanation**

### Explanation/Reference:

Explanation:

**QUESTION 36**

When is it recommended to block VRRP hellos between routers in the same VRRP instance?

- A. when the VRRP master and VRRP backup router are part of the same IRF virtual device
- B. when providing two VRRP master routers to be deployed in different data centers
- C. when the VRRP master and VRRP backup router are part of a TRILL domain
- D. when the VRRP master and VRRP backup router are top of the rack (ToR) switches

**Correct Answer:** A

**Section:** (none)

**Explanation**

**Explanation/Reference:**

choice of answer is correct.

**QUESTION 37**

A customer is deciding whether to purchase a switch in the HP 5900AF Series or the HP 5900CP series. Which need requires the customer to choose the HP 5900CP switch instead of the 5900AF switch?

- A. enhanced visibility for VM-to-VM traffic and Ethernet Virtual Bridge (EVB) solutions
- B. OpenFlow support and compatibility with HP software-defined networking (SDN) solutions
- C. LAN/SAN convergence support and native FC port connections
- D. support of 10GbE to the server edge and 40GbE uplinks

**Correct Answer:** D

**Section:** (none)

**Explanation**

**Explanation/Reference:**

References:

**QUESTION 38**

A company is adding a second data center for disaster recovery. The data centers connect over a link supplied by a service provider with an IP network. The company wants a solution that extends Layer 2 connectivity between the data centers and does not require any special services from the service provider, such as MPLS.

What can meet the needs for this design?

- A. QEVI
- B. IRF



- C. VPLS
- D. SPBM

**Correct Answer:** B

**Section:** (none)

**Explanation**

**Explanation/Reference:**

updated answer.

#### **QUESTION 39**

A multi-tenant data center with 12 tenants has the following goals:

Which feature should be configured on the data center routing switches?

- A. MPLS
- B. VPLS
- C. MDC
- D. Multi-VPN-Instance CE (MCE)

**Correct Answer:** C

**Section:** (none)

**Explanation**

**Explanation/Reference:**

Explanation:

#### **QUESTION 40**

An HP Comware Switch 1 supports FCoE for connected servers with Converged Network Adapters (CNAs). On interface Ten 1/0/1 Switch 1 sends FCoE traffic in VSAN 2 to an upstream switch. Switch 2 which also supports FCoE What is the correct configuration for interface Ten 1/0/1?

- A. FC trunk port, which permits VSAN 2
- B. bound to a VFC interface, which is a trunk port and permits VSAN 2
- C. bound to a VFC interface, which is an access port in VSAN 2
- D. FC access port in VSAN 2

**Correct Answer:** C

**Section:** (none)

**Explanation**

**Explanation/Reference:**

correct answer.

**QUESTION 41**

An HP Comware switch supports FCoE in Fibre Channel Forwarder (FCF) mode. A switch interface Ten1/0/1 connects to a server FCoE Converged Network Adapter (CNA). The CNA will carry normal data traffic and storage traffic for VSAN 2, which is associated with VLAN 20. How does the administrator assign FCoE traffic for this CNA to VSAN 2?

- A. by accessing the VSAN 2 configuration view and specifying Ten1/0/1 as a member port of the VSAN
- B. by accessing the VLAN 20 configuration view and specifying Ten1/0/1 as a member port of the VLAN
- C. by setting Ten1/0/1 to FCoE mode and specifying VSAN 2 as the port access VSAN
- D. by binding a VFC interface to Ten 1/0/1 and specifying VSAN 2 as the VFC interface trunk VSAN

**Correct Answer:** A

**Section:** (none)

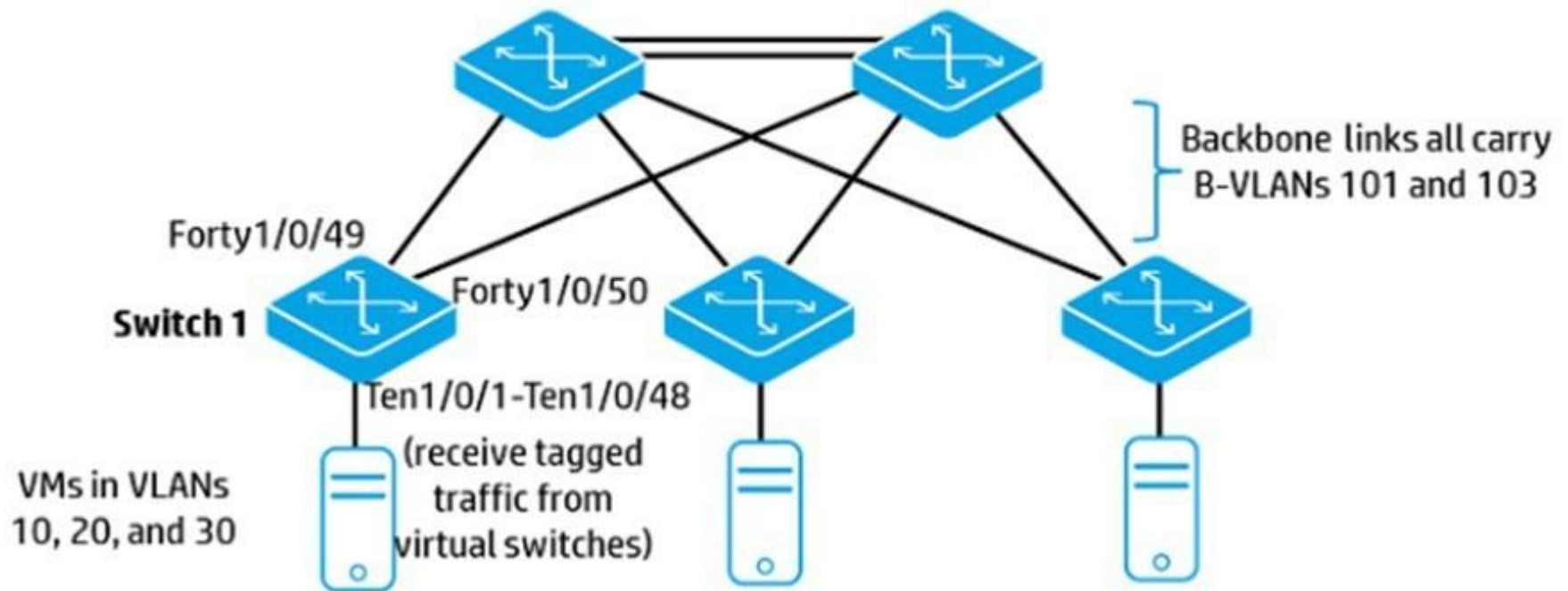
**Explanation**

**Explanation/Reference:**

Explanation:

**QUESTION 42**

Refer to the exhibit



An administrator is setting up this data center topology to use SPBM. VMs in the same subnet should be able to communicate at Layer 2 and be isolated at Layer 2 from other subnets. On which Switch 1 interfaces should the administrator enable SPBM?

- A. interfaces Ten1/0/1-Ten1/0/48 and interfaces Forty1/0/49-1/0/50
- B. interfaces Forty 1/0/49-1/0/50 only
- C. VLAN interfaces 101 and 103
- D. VLAN interfaces 10, 20, and 30

**Correct Answer: C**

**Section: (none)**

**Explanation**

**Explanation/Reference:**

Explanation:

#### QUESTION 43

An HP IRF virtual switch with two members is implementing SPBM. The administrator wants to ensure that the master can fail without causing topology changes or changes in forwarding tables in the SPBM region. Which setting helps support this requirement?

- A. tandem replication for multicasts
- B. persistent MAC address for IRF
- C. Bidirectional Forwarding Detection (BFD) Multi-Active Detection (MAD) for the IRF link
- D. non-stop-forwarding for SPBM

**Correct Answer:** C

**Section:** (none)

**Explanation**

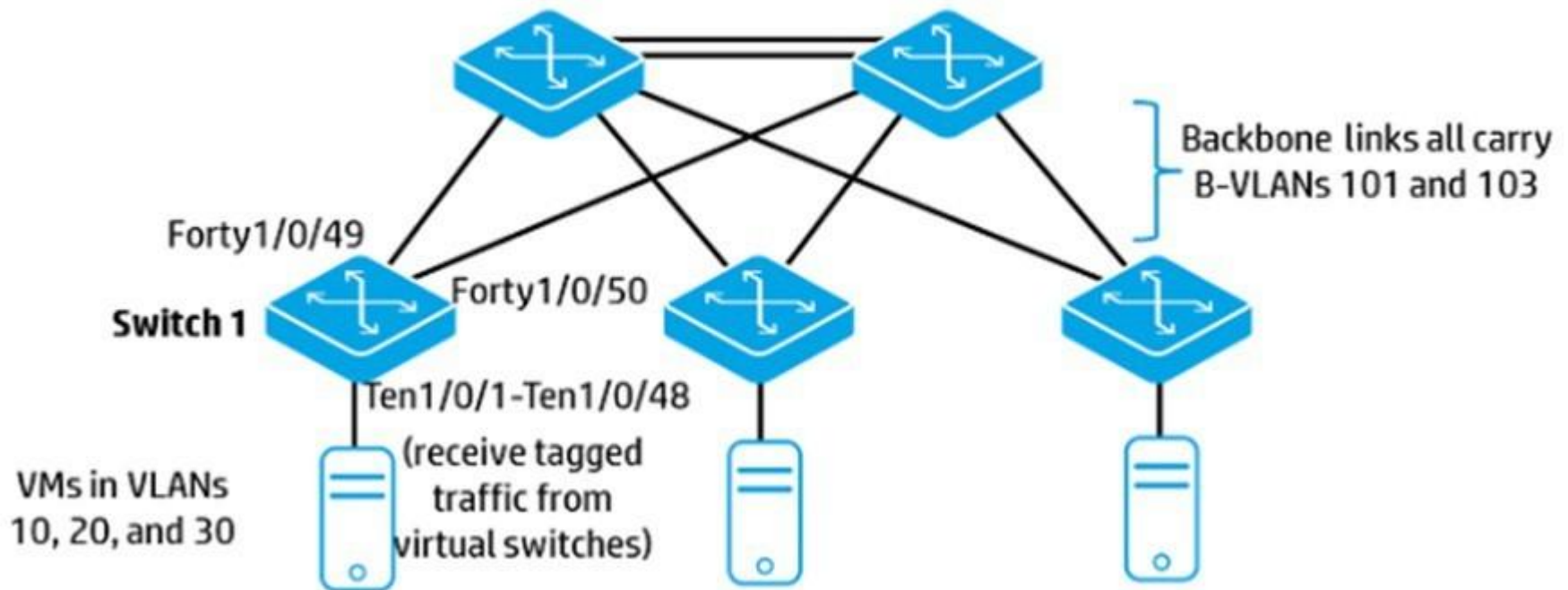
**Explanation/Reference:**

Explanation:

**QUESTION 44**

Refer to the exhibits

Exhibit 1



## Exhibit 2

```
vsi 10010  
  spb i-sid 10010  
  b-vlan 101
```

This data center topology is being set up to use SPBM. VMs in the same subnet should be able to communicate at Layer 2 and be isolated at Layer 2 from other subnets. VS110010 was created for VLAN 10 as shown in Exhibit 2. The administrator is configuring a service instance for the VLAN 10 traffic on Switch 1 interface Ten1/0/1.

What is the correct encapsulation mode?

- A. s-vid101
- B. ta99ed
- C. default
- D. s-vid10

**Correct Answer:** D

**Section:** (none)

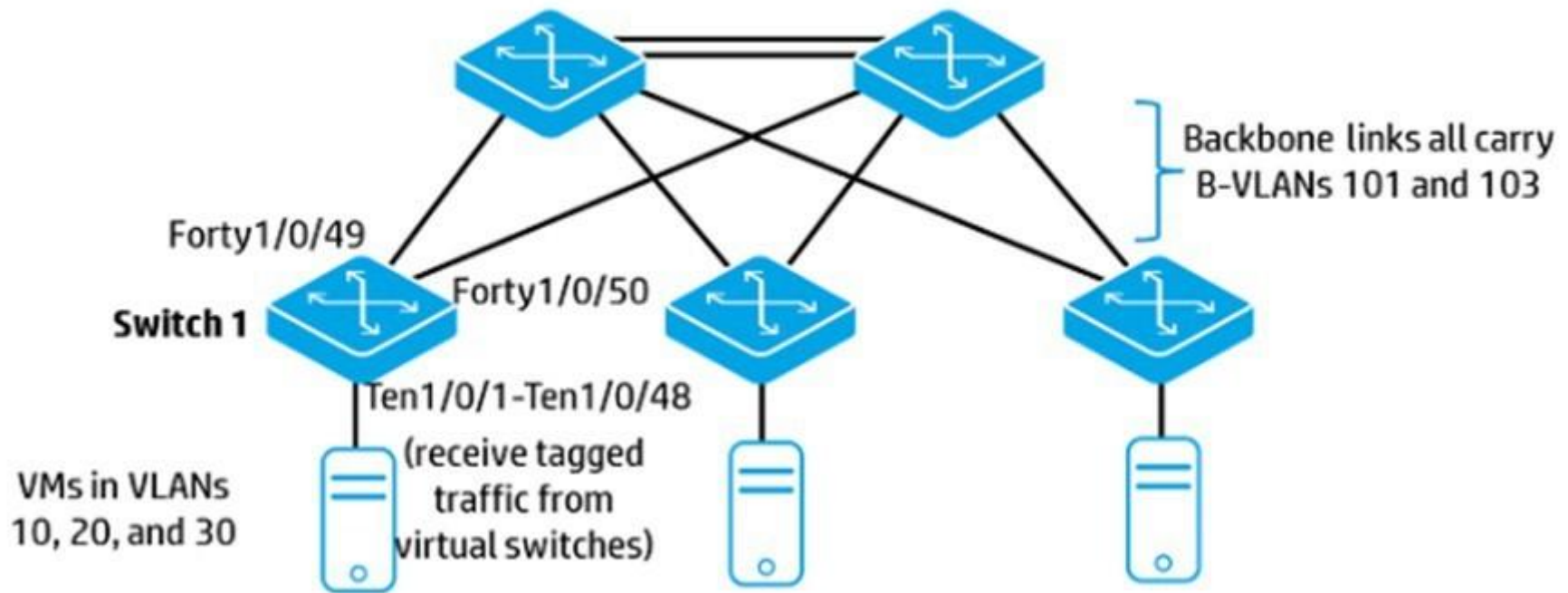
**Explanation**

**Explanation/Reference:**

Explanation:

### QUESTION 45

Refer to the exhibit



These switches form an SPBM region. What is required for load balancing to occur across the links between these switches?

- A. IS-IS cost for each backbone link must be the same (with IS-IS ECMP enabled).
- B. B-VLANs must be configured to use different ECT algorithms.
- C. Tandem multicast mode must be enabled globally
- D. B-VLANs must be assigned to different MSTP instances.

**Correct Answer: C**

**Section: (none)**

**Explanation**

**Explanation/Reference:**

properly sorted answer.

#### QUESTION 46

To support FCoE traffic, a switch port needs to use Application TLVs to communicate application priority information to a Converged Network Adapter (CNA). The setup process includes the configuration of an Access Control List (ACL). What is a valid ACL?

- A. Advanced ACL that selects traffic by UDP source port
- B. Advanced ACL that selects traffic by TCP source port
- C. Standard ACL that selects traffic by source IP address
- D. Ethernet ACL that selects traffic by Ethertype

**Correct Answer:** B

**Section:** (none)

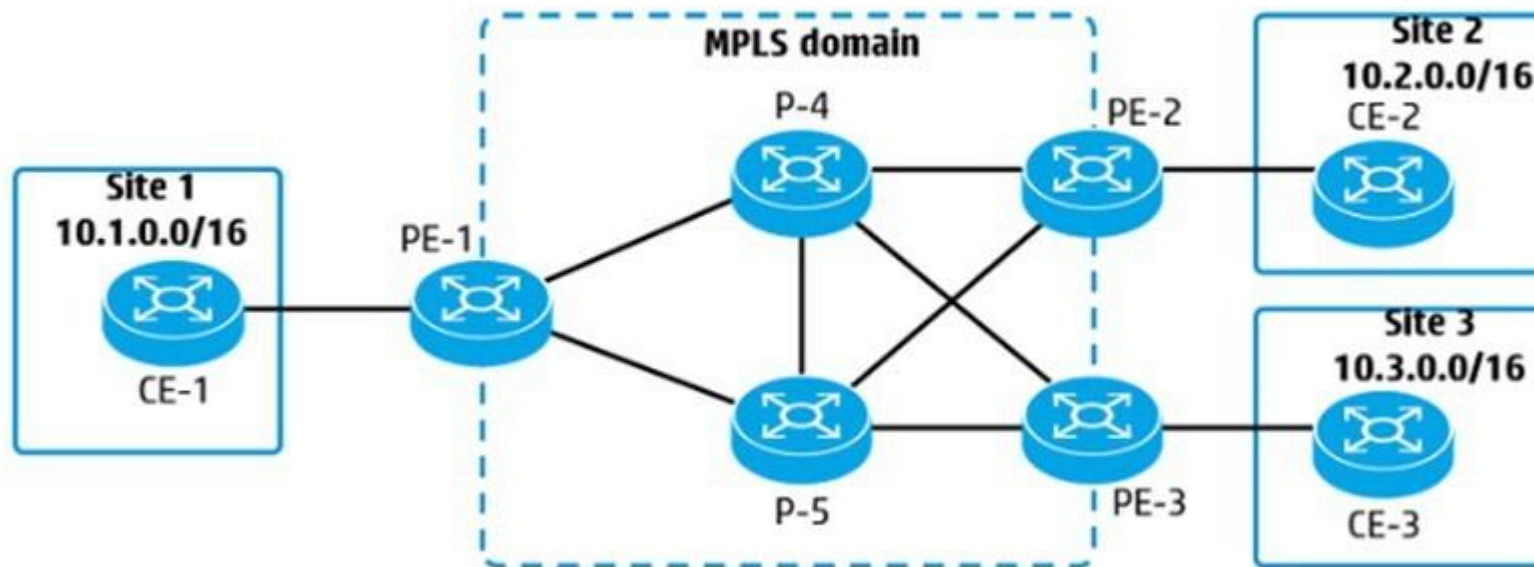
**Explanation**

**Explanation/Reference:**

Explanation:

#### QUESTION 47

Refer to the exhibit



An administrator is establishing an MPLS domain to allow communication between 10.1.0.0/16, 10.2.0.0/16, and 10.3.0.0/16. The solution will use OSPF routing and LDP. On which PE and P devices should these protocols be configured?



- A. All P and PE devices should be configured with MPLS, but only P devices need OSPF and only PE devices need LDP.
- B. All P and PE devices should be configured with MPLS, LDP, and OSPF.
- C. All P and PE devices should be configured with MPLS, but only PE devices need OSPF and LDP.
- D. All P and PE devices should be configured with MPLS and LDP, but only PE devices need OSPF.

**Correct Answer:** A

**Section:** (none)

**Explanation**

**Explanation/Reference:**

Explanation:

#### **QUESTION 48**

Which option is correct about the flash memory of an HP Comware switch with multiple MDCs?

- A. Each MDC has its own subfolder in the flash, but it can also access another MDC's subfolder if administrators specifically reference the appropriate folder ID.
- B. The entire flash directory is shared by every MDC. All MDCs have root access. Administrators may create new subfolders.
- C. Each MDC including the Admin MDC can only access its own subfolder in the flash. The Admin MDC can also access the root folder, but not the subfolder for other MDCs.
- D. Except for the Admin MDC each MDC can only see and access its own subfolder in the flash. The Admin MDC has root access to the root folder and all subfolders.

**Correct Answer:** B

**Section:** (none)

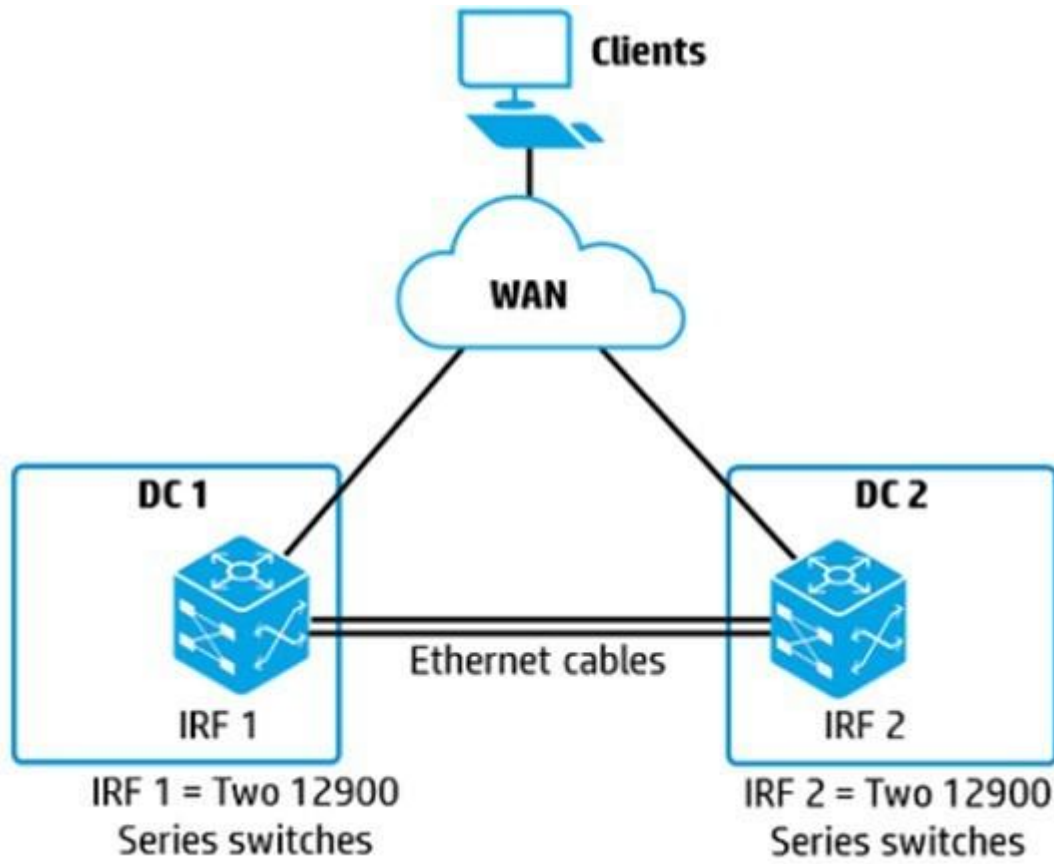
**Explanation**

**Explanation/Reference:**

Explanation:

#### **QUESTION 49**

Refer to the exhibit



A company added a second data center IRF 1 and IRF 2 connect on direct Ethernet cables. What is the simplest, most flexible and resilient option for the data center connection?

- A. link aggregation between IRF 1 and IRF 2
- B. VPLS solution between IRF 1 and IRF 2
- C. EVI network between IRF 1 and IRF 2
- D. IRF 1 and IRF 2 combined into a single IRF virtual device

**Correct Answer:** B

**Section:** (none)

**Explanation**

**Explanation/Reference:**

Explanation:

**QUESTION 50**

What is an appropriate situation for configuring an interface as a silent TRILL access port?

- A. The interface connects to another TRILL switch, which has a higher DRB priority than this switch
- B. The interface connects to a downstream non-TRILL switch, which is connected to another TRILL switch. The administrator does not want the interface to carry encapsulated TRILL traffic.
- C. The interface connects to a downstream non-TRILL switch, which is connected to another TRILL switch. The administrator wants the interface to provide a backup path for encapsulated TRILL traffic
- D. The interface connects directly to server NICs. and it is a bridge aggregation on an IRF virtual device.

**Correct Answer:** A

**Section:** (none)

**Explanation**

**Explanation/Reference:**

absolute answer.

**QUESTION 51**

Which statement is correct about defining a Route Distinguisher (RD) for a VPN instance on an HP Comware switch?

- A. The RD is only required when the router runs Border Gateway Protocol (BGP) and must match the BGP router ID.
- B. The RD is only required when the router runs Border Gateway Protocol (BGP) and must be unique to that VPN instance.
- C. The RD is always required and must match the switch global router ID.
- D. The RD is always required and must be unique to that VPN instance.

**Correct Answer:** C

**Section:** (none)

**Explanation**

**Explanation/Reference:**

Explanation:

**QUESTION 52**

What is the relationship between a Forwarding Equivalence Class (FEC) and the MPLS label that a Label Switching Router (LSR) advertises for that FEC?

- A. An LSR assigns the same label to FECs with the same best next hop: labels remain constant across the MPLS domain

- B. The LSR assigns a unique label to each FEC, but labels assigned by different LSRs do not necessarily match.
- C. The LSR assigns a unique label to each FEC. and that label remains constant across the MPLS domain
- D. An LSR assigns the same label to FECs with the same best next hop; labels assigned by different LSRs do not necessarily match

**Correct Answer:** D

**Section:** (none)

**Explanation**

**Explanation/Reference:**

Explanation:

### QUESTION 53

What is the correct use case for implementing priority flow control (PFC) on a switch port?

- A. The port carries data and storage traffic. PFC should be applied to the priority queue that is assigned to storage traffic.
- B. The port carries multimedia voice and video traffic PFC should be applied to the queues with a lower priority than multimedia traffic
- C. The port carries data and storage traffic PFC should be applied to the queues with a lower priority than storage traffic.
- D. The port carries multimedia voice and video traffic PFC should be applied to the priority queue that is assigned to multimedia traffic.

**Correct Answer:** C

**Section:** (none)

**Explanation**

**Explanation/Reference:**

Explanation:

### QUESTION 54

An HP Comware switch uses the MDC feature and has two MDCs defined. Administrators want MDC 1 and MDC 2 to be able to exchange traffic. How should the administrators complete the configuration?

- A. Create a virtual port with the same name on MDC 1 and MDC 2.
- B. Create a virtual port on MDC 0 and tag that port for the MDC 1 and MDC 2 management VLANs
- C. Connect a physical port that belongs to MDC 1 to a physical port that belongs to MDC 2
- D. Configure MDC 0 to permit data exchange and add a backplane mapping between MDC 1 and MDC 2.

**Correct Answer:** A

**Section:** (none)

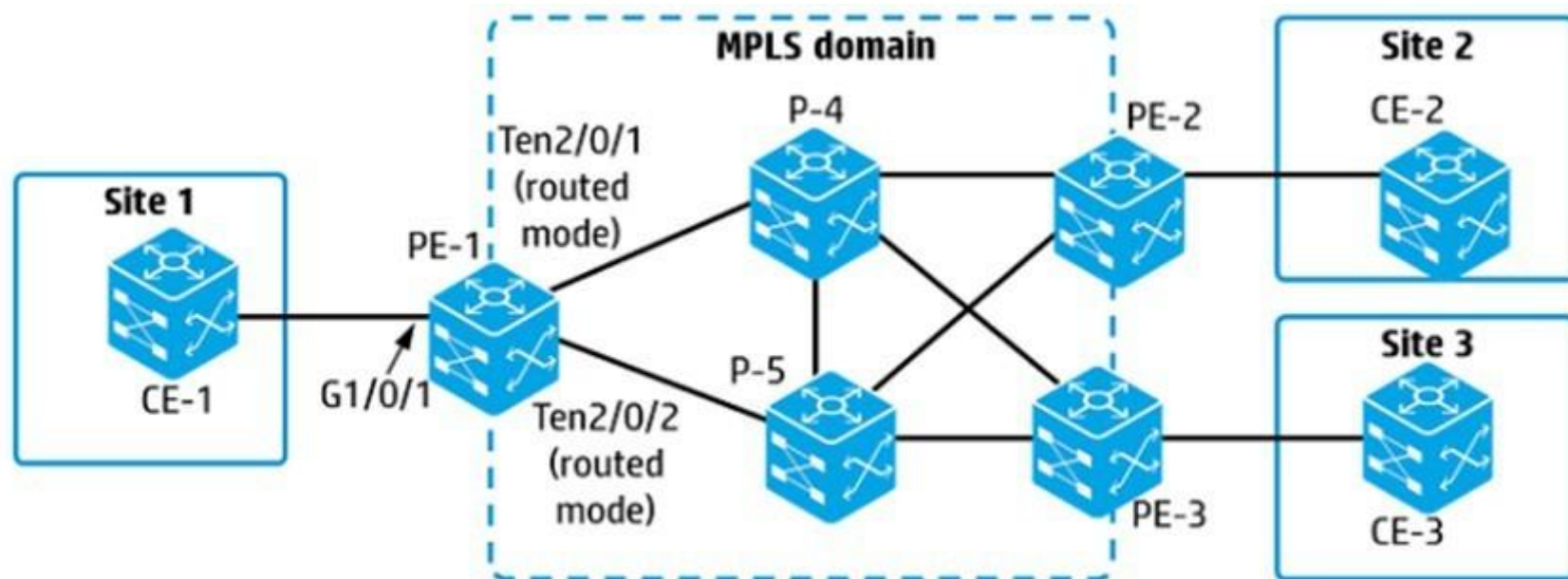
**Explanation**

**Explanation/Reference:**

Explanation:

#### QUESTION 55

Refer to the exhibit



An administrator is setting up an MPLS Layer 2 VPN between customer Sites 1 and 2 and is defining the pseudo wire (PW) ID for this purpose. How should the PW IDs and router values be configured?

- A. Set the PW ID to a different value on PE-1 and PE-2 The value on each router must match the label advertised by the peer for its loopback address.
- B. Set the PW ID to a different value on PE-1 and PE-2 Also use a different value from other PWs on these routers.
- C. Set the PW ID to the same value on PE-1 and PE-2. Use a different value from other PWs on these routers.
- D. Set the PW ID to the same value on PE-1 and PE-2. The value on each router must match the S- VLAN ID for the associated service instance.

**Correct Answer:** D

**Section:** (none)

**Explanation**

**Explanation/Reference:**

Explanation:

**QUESTION 56**

How does a non-hierarchical VPLS Martini solution prevent looping for broadcasts and multicasts?

- A. PEs use a hub and spoke topology, relying on the hub to distribute broadcasts and multicasts.
- B. PEs use split horizon operations, never forwarding a packet received on a pseudo wire (PW) over another PW.
- C. PEs implement Shortest Path Bridging (SPB) VLAN Mode (SPBV).
- D. PEs implement a version of Spanning Tree Protocol (STP). preferably Multiple STP (MSTP).

**Correct Answer:** B

**Section:** (none)

**Explanation**

**Explanation/Reference:**

Explanation:

**QUESTION 57**

A large data center needs to extend its Layer 2 connectivity and isolate tenants who might use the same VLAN IDs Which technology accomplishes this goal?

- A. SPBM
- B. Data Center Bridging (DCB)
- C. Multi-VPN-Instance CE (MCE)
- D. TRILL

**Correct Answer:** A

**Section:** (none)

**Explanation**

**Explanation/Reference:**

appropriate answer.

**QUESTION 58**

To provide redundancy, a company has multiple data centers that use server virtualization. What is a networking requirement for this scenario?

- A. less bandwidth at the server access layer and more bandwidth at the distribution layer than in a non- virtualized network
- B. physical network segmentation and isolation implemented at Layers 1 through 7
- C. localized storage volumes that are isolated within each data center
- D. extension of Layer 2 connectivity across the data centers

**Correct Answer:** D

**Section: (none)**

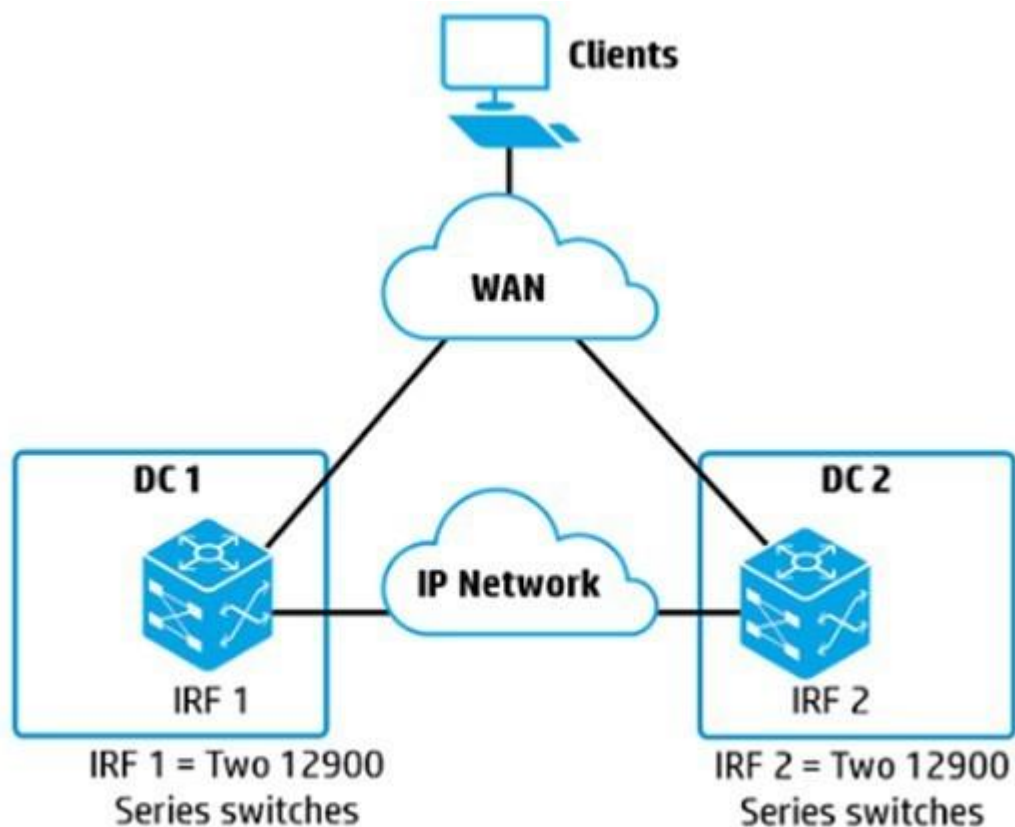
**Explanation**

**Explanation/Reference:**

Explanation:

**QUESTION 59**

Refer to the exhibit



The exhibit displays a company with two data centers that connect by using EVI. The company needs a redundant solution for routing traffic between the subnets.

What is the best way to accomplish this goal?

- A. Run Virtual Router Redundancy Protocol (VRRP) on the data center subnets
- B. Place the EVI tunnel interface on each IRF virtual device in a different VPN instance, and then set up routing on each device by using the same IP addresses.
- C. Use TRILL on the EVI network.
- D. Combine IRF 1 and IRF 2 into the same IRF virtual device, and set up routing on that device

**Correct Answer:** B

**Section:** (none)

**Explanation**

**Explanation/Reference:**

Explanation:

#### **QUESTION 60**

In addition to the Admin MDC, an HP Comware switch supports two MDCs: MDC 2 and MDC 3. The administrator wants to allow tenants for both MDCs to log in to CLI for their own MDC without first accessing the Admin MDC. How can the administrator accomplish this goal?

- A. Assign a console port to each MDC. Tenants can then connect their own terminal equipment to their assigned port.
- B. Define a VLAN as the MDC Management VLAN in the Admin MDC. On each MDC, create this VLAN. Assign a port to it. Set up an IP address on it and set up Telnet or SSH access through it.
- C. Create subinterfaces for the AUX user-interface in the Admin MDC. Assign one of the subinterfaces to each of the MDCs, and set up Telnet or SSH access through that interface.
- D. Define a physical port as the Management-Ethernet interface in the Admin MDC. On each MDC, configure a different IP address for this interface, and set up Telnet or SSH access through it.

**Correct Answer:** B

**Section:** (none)

**Explanation**

**Explanation/Reference:**

Explanation: