

TestKings.210-065_60.QA

Number: 210-065
Passing Score: 800
Time Limit: 120 min
File Version: 23.04

VCEplus.com



Cisco 210-065

Implementing Cisco Video Network Devices V1.0



This is a new VCE file with new questions. All the questions are super valid.



Tip just read the questions carefully and you will make it... Thanks for this dump, it is a good guide....



Pretty much all the questions we study that may have multiple answers, no answer is in doubt, I got on the test.



Test king team utilize the experience and knowledge of a team of industry professionals from leading organizations all over the world.

Sections

1. Video Concepts
2. Endpoint Configuration
3. Troubleshooting and Support
4. Conferencing Concepts
5. Mix Questions

Exam A

QUESTION 1

Which four features are provided by Cisco TelePresence Management Suite? (Choose four.)

- A. Scheduling of video conference calls
- B. Built-in-bridge functionality for multiparty video conferences
- C. SIP-H.323 protocol interworking
- D. Centralized management of conference resources
- E. SMTP email event notification
- F. Endpoint configuration backup and restore
- G. Cisco TelePresence endpoint automated redundancy
- H. Automated resource optimization

Correct Answer: ADEF

Section: Video Concepts

Explanation

Explanation/Reference:
answer is verified.

QUESTION 2

Which three features are supported by Cisco TMSPE? (Choose three.)

- A. Simplified provisioning
- B. LDAP user import
- C. Scheduling via Microsoft Outlook
- D. FindMe
- E. Jabber for Windows
- F. Automatic endpoint upgrades

Correct Answer: ABD

Section: Video Concepts

Explanation

Explanation/Reference:
Explanation:

QUESTION 3

Management wants to modify Cisco TMS to allow users to configure the call behavior with their associated devices and dial from a single ID. Which feature needs to be enabled and configured?

- A. Smart Scheduler
- B. Low-touch Provisioning
- C. FindMe
- D. CMR Provisioning

Correct Answer: C

Section: Video Concepts

Explanation

Explanation/Reference:

Explanation:

QUESTION 4

Refer to the exhibit.

The screenshot displays the Cisco TelePresence Management Suite interface. The top navigation bar includes links for Portal, Booking, Monitoring, Systems, Phone Books, Reporting, and Administrative Tools. The left sidebar shows a tree view under 'Users' with 'Jabber Video Users', 'Jabber Video Users - High Bandwidth', and 'Test Group' (selected). Below this is a 'Configuration Templates' section. The main content area is titled 'Test Group' and features a folder icon. Below the title are action buttons: 'Rename Group...', 'Delete', 'Send Account Information', 'Move Group', and 'Toggle Details'. A 'User Settings' section is visible, containing a table with two columns: 'Name' and 'Pattern'. The table lists 'Video Address Pattern' with a value of '{email}', 'Caller ID Pattern', 'Device Address Pattern' with a value of '{email}', and 'Image URL Pattern'. Below the table are 'Edit' and 'Reload' buttons. At the bottom of the main area are sections for 'User Import' and 'Configuration Templates'.

Users

Users and Groups

- Jabber Video Users
- Jabber Video Users - High Bandwidth
- **Test Group**

Configuration Templates

Test Group

Rename Group... Delete Send Account Information Move Group Toggle Details

User Settings

Name	Pattern
Video Address Pattern	{email}
Caller ID Pattern	
Device Address Pattern	{email}
Image URL Pattern	

Edit Reload

User Import

Configuration Templates

Which configuration item shown in the exhibit should be used to assign the internal and external video communication server address for this group of users?

A. User Settings > Video Address pattern

- B. Administrative Tools > User Settings
- C. Configuration Template > Edit Template
- D. User Import > Configuration

Correct Answer: C

Section: Video Concepts

Explanation

Explanation/Reference:

Explanation:

Topic 2, Endpoint Configuration

QUESTION 5

A network engineer wants to automate the monitoring of Cisco TelePresence TX systems. Which step should the engineer take first?

- A. Configure Cisco TMS on the codec.
- B. Configure Medianet on the codec.
- C. Configure NTP on the codec.
- D. Configure Multiway on the codec.
- E. Configure SNMP on the codec.

Correct Answer: E

Section: Endpoint Configuration

Explanation

Explanation/Reference:

Explanation:

QUESTION 6

A technician is tasked with performing a room readiness assessment in preparation for an immersive video endpoint. What are three Cisco best practices regarding lighting recommendations for the room? (Choose three.)

- A. The bulb temperature should be between 4000 and 4100K.
- B. Key lighting should be between 200 and 400 Lux with the endpoint powered on.
- C. Shoulder lighting should not exceed two times the facial lighting values with the endpoint off.
- D. Use direct lighting fixtures.
- E. Within the camera field of view, the lighting for all parts of the room should not fluctuate more than 100 Lux.

F. Avoid using dimming light control systems.

Correct Answer: ACE

Section: Endpoint Configuration

Explanation

Explanation/Reference:

Explanation:

QUESTION 7

Refer to the exhibit.

Device Information	
Product:	SIP Trunk
Device Protocol:	SIP
Trunk Service Type	None(Default)
Device Name*	LAB_VCS
Description	LAB_VCS
Device Pool*	VAB
Common Device Configuration	< None >
Call Classification*	Use System Default
Media Resource Group List	< None >
Location*	Hub_None
AAR Group	< None >
Tunneled Protocol*	None
SIP Profile Information	
Name*	Standard SIP Profile For Cisco VCS
Description	Default SIP Profile For Cisco Video Communication Server
Default MTP Telephony Event Payload Type*	101
Early Offer for G.Clear Calls*	Disabled ▼
User-Agent and Server header information*	Send Unified CM Version Information as User-Agen ▼
Version in User Agent and Server Header*	Major And Minor ▼
SDP Information	
<input type="checkbox"/> Send send-receive SDP in mid-call INVITE <input type="checkbox"/> Allow Presentation Sharing using BFCP <input checked="" type="checkbox"/> Allow iX Application Media <input checked="" type="checkbox"/> Allow multiple codecs in answer SDP	

A network engineer configures a Cisco Unified Communications Manager and VCS integration via a SIP trunk. Endpoint A is able to conduct video calls to Endpoint B. When Endpoint A attempts to share presentation content with Endpoint B, Endpoint B sees the presentation video on the main screen rather than on the presentation display. What is the cause?

- A. The default MTP telephony payload is incorrect.
- B. The SIP trunk is not running on all active Cisco Unified Communications Manager nodes.
- C. MTP is not forced to be required.
- D. BFCP is not enabled.
- E. The MTP preferred codec is incorrect for content presentation.

Correct Answer: D

Section: Endpoint Configuration

Explanation

Explanation/Reference:

Explanation:

QUESTION 8

Which three features does Cisco VCS provide? (Choose three.)

- A. native Cisco SCCP telephony integration
- B. SIP-H.323 interworking functionality
- C. native scheduling
- D. SIP trunk integration with Cisco Unified Communications Manager
- E. third-party standards-based H.323 and SIP device registration
- F. reverse proxy functionality

Correct Answer: BDE

Section: Endpoint Configuration

Explanation

Explanation/Reference:

Explanation:

QUESTION 9

A Unified Communications engineer wants to configure a Cisco TelePresence SX endpoint using static IP addressing to use a different TFTP server. Which path will allow the engineer to complete this configuration?

- A. Network Services > Network 1 > DHCP RequestTFTPServerAddress > Off
- B. Network > TFTP > DHCP RequestTFTPServerAddress > Off
- C. Network Services > TFTP > DHCP RequestTFTPServerAddress > Off
- D. Configuration > System Configuration > Provisioning > Set the External Manager Address

Correct Answer: D

Section: Endpoint Configuration

Explanation

Explanation/Reference:

Explanation:

QUESTION 10

Which two protocols can be used with the Cisco TelePresence Content Server to allow users to share content from their laptops? (Choose two.)

- A. BFCP
- B. H.239
- C. PCoIP
- D. Switched Presentation
- E. SCCP
- F. RDP

Correct Answer: AB

Section: Endpoint Configuration

Explanation

Explanation/Reference:

QUESTION 11

Which four features are supported by Cisco TelePresence Server for all hardware models in remotely managed mode? (Choose four.)

- A. auto-attendant
- B. ClearPath
- C. Cluster sizes of more than 5 servers
- D. Cascading
- E. Active presence for all devices
- F. Support for Conductor

G. Native scheduling capabilities

Correct Answer: BDEF

Section: Endpoint Configuration

Explanation

Explanation/Reference:

answer is well explained.

QUESTION 12

A technician is trying to pair a Touch 8 with a Cisco TelePresence SX20 endpoint, but the codec is not automatically listed in the touch panel. What are two possible reasons for this behavior? (Choose two.)

- A. The codec firmware version is below version TC 6.1.
- B. The codec and the Touch 8 are on separate subnets.
- C. Pairing visibility mode is not active on the codec.
- D. The codec is not compatible with a Touch 8 device.
- E. The Touch 8 is connected via the second Ethernet port on the codec.

Correct Answer: BC

Section: Troubleshooting and Support

Explanation

Explanation/Reference:

Explanation:

QUESTION 13

Cisco TMS is unable to manage endpoints and an engineer is required to capture logs to determine the cause. What is the menu path that the engineer should follow to capture and download logs from Cisco TMS?

- A. Administrative Tools > Diagnostics > TMS Tickets
- B. Administrative Tools > TMS Server Maintenance > Download Diagnostic Files
- C. Systems > Navigator > Diagnostics > Download Diagnostic Files
- D. Systems > Navigator > TMS Logs

Correct Answer: B

Section: Troubleshooting and Support

Explanation

Explanation/Reference:

Explanation:

QUESTION 14

An engineer is creating a system backup on a Cisco VCS. Which two options describe characteristics of Cisco VCS backups? (Choose two.)

- A. The backup can be sent to the remote SFTP server.
- B. The backup can be encrypted with a password.
- C. The backup can be sent to additional servers in the cluster.
- D. The backup is valid for 30 days.
- E. The backup is stored in Cisco TMS.
- F. The backup is only downloadable locally.

Correct Answer: BF

Section: Troubleshooting and Support

Explanation

Explanation/Reference:

Explanation:

QUESTION 15

A technician has installed and powered on a Cisco TelePresence MCU 5320 and is connected via the console port. The technician needs to determine the IP settings that were automatically assigned via DHCP. Which command should be entered?

- A. xstatus
- B. show network eth0
- C. status
- D. help static

Correct Answer: C

Section: Troubleshooting and Support

Explanation

Explanation/Reference:

Explanation:

QUESTION 16

The firmware for the primary codec of a Cisco TelePresence System 3010 is being upgraded. Which codec CLI command could be used to check on the progress of the update?

- A. utils upgrade display
- B. utils system version
- C. show upgrade detail
- D. show system upgrade

Correct Answer: C

Section: Troubleshooting and Support

Explanation

Explanation/Reference:

Explanation:

QUESTION 17

A Cisco TelePresence VCS displays this alarm: "Root password is set to default." How can this security warning be addressed?

- A. Use the Cisco TelePresence VCS web user interface, choose Administration > User Settings, and change the root password.
- B. Use SSH to log in to the Cisco TelePresence VCS as Administrator and issue the command xconfig root set passwd.
- C. Use SSH to log in to the Cisco TelePresence VCS as Root, issue the command set password, and enter the new password when prompted.
- D. Use SSH to log in to the Cisco TelePresence VCS as Root, issue the command passwd, and enter the new password when prompted.
- E. Use the Cisco TelePresence VCS web user interface, choose Administration > System Settings, and change the root password.

Correct Answer: D

Section: Troubleshooting and Support

Explanation

Explanation/Reference:

answer is valid.

QUESTION 18

A large company wants to procure video conference devices that allow multipoint conferences from C-Series and immersive endpoints that are registered to a Cisco VCS and Cisco Unified Communications Manager. Which two components meet the requirements of this company? (Choose two.)

- A. Cisco TelePresence Multipoint Switch registered to Cisco VCS
- B. Cisco C-Series endpoint with a multisite option key registered to Cisco VCS
- C. Cisco TelePresence Server registered to Cisco VCS
- D. Cisco C-Series endpoint with a multisite option key registered to Cisco Unified Communications Manager
- E. Cisco TelePresence Multipoint Switch trunked to Cisco Unified Communications Manager

Correct Answer: CE

Section: Conferencing Concepts

Explanation

Explanation/Reference:

Explanation:

QUESTION 19

A video conference user that is connected via a Cisco TelePresence Codec C40 to a conference that is hosted on a Cisco TelePresence MCU 5300 would like to switch the local layout view. Which two options describe how to switch the local layout view without affecting the view of remote users? (Choose two.)

- A. Use the Administrator settings from the local touch control.
- B. Use the Participant settings from the MCU 5300 web interface.
- C. Use the Call settings from the remote control.
- D. Use the Call Control settings from the codec web interface.
- E. Use the Conference settings from the codec web interface.

Correct Answer: BD

Section: Conferencing Concepts

Explanation

Explanation/Reference:

Explanation:

QUESTION 20

Management would like to set up a permanent recurring Cisco TelePresence meeting where the team would dial into to a preconfigured number. Which meeting type should be used?

- A. scheduled conference
- B. ad hoc conference
- C. rendezvous conference
- D. multiway conference

Correct Answer: C

Section: Conferencing Concepts

Explanation

Explanation/Reference:

QUESTION 21

When scheduling a multipoint conference, which three devices are required for the conference to be scheduled and completed successfully? (Choose three.)

- A. Cisco Unified Communications Manager
- B. multipoint control unit
- C. video conferencing endpoints
- D. Cisco Unity Connection
- E. Cisco Unified IM and Presence

Correct Answer: ABC

Section: Mix Questions

Explanation

Explanation/Reference:

Explanation:

QUESTION 22

Which of these is the core component of the Cisco Video Surveillance product suite that handles recording and serving of video feeds?

- A. Video Communications Server
- B. Cisco IP camera
- C. Cisco Video Surveillance Operations Manager
- D. Cisco Video Surveillance Media Server

Correct Answer: D

Section: Mix Questions

Explanation

Explanation/Reference:

Explanation:

QUESTION 23

Which Cisco Video Surveillance product contains the Cisco Video Surveillance Encoding Server?

- A. Video Communications Server
- B. Cisco Video Surveillance Operations Manager

- C. Cisco Video Surveillance Media Server
- D. Cisco Video Surveillance Transcoding and Encoding Server
- E. Cisco Video Surveillance Virtual Matrix

Correct Answer: B

Section: Mix Questions

Explanation

Explanation/Reference:

Explanation:

QUESTION 24

Cisco Video Surveillance Video Encoder cards perform which function?

- A. the ability to use existing analog equipment with an IP-enabled video surveillance system
- B. the ability to convert low-resolution video to high-definition video for video surveillance
- C. the ability to stream digital media to digital media in an IP-enabled video recording environment
- D. the ability to encrypt raw video signals to secure video signals

Correct Answer: A

Section: Mix Questions

Explanation

Explanation/Reference:

Explanation:

QUESTION 25

Which two issues does utilizing an IP network storage solution for IP video surveillance help overcome? (Choose two.)

- A. analog to IP conversion
- B. large, expandable storage space
- C. physical security
- D. scalability
- E. faster bit rate for storage

Correct Answer: BD

Section: Mix Questions

Explanation

Explanation/Reference:

Explanation:

QUESTION 26

Which Cisco Video Surveillance device is responsible for providing video streams to monitors after the respective layouts and views are received by the monitors?

- A. Cisco IP Video Surveillance Operations Manager
- B. Cisco IP Video Surveillance Virtual Matrix Viewer
- C. Cisco Video Surveillance Manager
- D. Cisco Video Surveillance Media Server

Correct Answer: D

Section: Mix Questions

Explanation

Explanation/Reference:

Explanation:

QUESTION 27

Which of these involves combining visual elements from separate sources into a single image?

- A. interlacing
- B. compositing
- C. video conferencing
- D. interleaving

Correct Answer: B

Section: Mix Questions

Explanation

Explanation/Reference:

Explanation:

QUESTION 28

Which two of these are considered to be provisioning and scheduling management tools in a Cisco TelePresence environment? (Choose two.)

- A. Cisco TelePresence Manager
- B. Cisco Video Surveillance Operations Manager

- C. Cisco TelePresence Management Suite
- D. Cisco TelePresence Multipoint Control Unit
- E. Cisco Video Surveillance Management Server

Correct Answer: AC

Section: Mix Questions

Explanation

Explanation/Reference:

Explanation:

QUESTION 29

Refer to the exhibit.

The screenshot displays the Cisco TANDBERG Codec C60 web interface. The top navigation bar includes tabs for Diagnostics, Configuration, Call Control, and Maintenance, with the user 'admin' logged in. The main content area is divided into two sections: System Information and Sign In Information.

System Information

General		H323	
System name:	c60.dca222.test	Number:	52924116
Software version:	TC5.1.3.292001	ID:	c60@dca222.test
Product:	TANDBERG Codec C60	Gatekeeper:	
Serial number:	F1AD46D00032	Status:	
IP address:	172.29.24.120	SIP	
MAC address:	00:50:60:0D:29:37	URI:	slp:c60@dca222.test
Valid release key:	Yes	Proxy:	172.31.222.70
Installed options:	NaturalPresenter, MultiSite, PremiumResolution	Status:	Registered

Sign In Information

Last successful sign in:	Thu Aug 9 12:31:06 2012	Unsuccessful authorization attempts since last sign in:	0
Password expires in:	Never		

You have just finished installing a 65-inch dual profile system in a multipurpose room. After powering up the entire system, only one display is used. Using the information in the exhibit, why is the second display not displaying anything from the system?

- A. The Cisco TelePresence profile systems do not support dual display.
- B. The display is not powered on.
- C. The dual display option key has not been input into the codec.
- D. The codec has the appropriate option keys installed, so either the display is not cabled correctly, the codec is configured incorrectly, or there is no input being sent to the display.

Correct Answer: D

Section: Mix Questions

Explanation

Explanation/Reference:

Explanation:

QUESTION 30

Threat monitoring in physical access security can be based upon which three of these? (Choose three.)

- A. doors
- B. badges
- C. age
- D. weather
- E. height
- F. fingerprints

Correct Answer: ABF

Section: Mix Questions

Explanation

Explanation/Reference:

QUESTION 31

When connecting to a pan-tilt-zoom camera to a C-Series codec, what type of cable must be used for camera control?

- A. an Ethernet crossover cable (RJ45-to-RJ45)
- B. an Ethernet cable (RJ45-to-RJ45)

- C. a serial cable (DB25-to-DB9)
- D. a VISCA cable (DB9-to-RJ45)

Correct Answer: D

Section: Mix Questions

Explanation

Explanation/Reference:

Explanation:

QUESTION 32

Which statement is true about the Cisco TelePresence System 500-32 system regarding the HVAC needs for the room where it is installed?

- A. The system does not require any additional requirements above the normal HVAC requirements for the room.
- B. You must supply additional cooling requirements for the room.
- C. You must supply a room that has energy-efficient lighting to reduce the temperature of the room.
- D. The temperature of the room will be 10 to 20 degrees warmer than the rest of the building.

Correct Answer: A

Section: Mix Questions

Explanation

Explanation/Reference:

Explanation:

QUESTION 33

What is the optimum distance for a person sitting using the Cisco TelePresence System 500?

- A. the camera can adjust automatically
- B. 0.5 meters and 0.75 meters (1.5 and 2.5 feet)
- C. 1.2 meters and 1.8 meters (4 and 6 feet)
- D. 3.0 and 5.0 meters (10 and 15 feet)

Correct Answer: C

Section: Mix Questions

Explanation

Explanation/Reference:

Explanation:

QUESTION 34

You have installed a C-Series endpoint in an office where DHCP is not supported. At a minimum, which four network items must be configured for the endpoint to be able to register with H.323 on a Cisco TelePresence Video Communication Server located at the external headquarters location? (Choose four.)

- A. unique IPv4 address
- B. subnet mask
- C. default gateway
- D. Cisco VCS IPv4 address
- E. Active Directory IPv4 address
- F. SMTP server IPv4 address

Correct Answer: ABCD

Section: Mix Questions

Explanation

Explanation/Reference:

Explanation:

QUESTION 35

Which two additional items can be configured for an endpoint to register with the Cisco TelePresence Video Communication Server for H.323 to function correctly? (Choose two.)

- A. unique system ID
- B. unique H.323 ID
- C. unique DNS entry ID
- D. unique E.164 alias
- E. unique real-time transport protocol port numbers
- F. unique NTP server IPv4 address

Correct Answer: BD

Section: Mix Questions

Explanation

Explanation/Reference:

Explanation:

QUESTION 36

Which two additional items must be configured for an endpoint to register manually with the Cisco

TelePresence Video Communication Server for the SIP to function correctly? (Choose two.)

- A. E.164 alias
- B. H.323 ID
- C. SIP uniform resource indicator
- D. configured SIP registrar and proxy server
- E. NTP server IPv4 address
- F. unique system ID

Correct Answer: CD

Section: Mix Questions

Explanation

Explanation/Reference:

Explanation:

QUESTION 37

What is the importance of defining option 150 in the DHCP server for Cisco TelePresence endpoints?

- A. Option 150 is not important.
- B. It is the TFTP server IPv4 address where the video endpoint retrieves its configuration file while booting.
- C. It is the IPv4 address of the default gateway for the subnet that the video endpoint is connected to.
- D. It is the configured SIP registrar and proxy server.
- E. It is the unique NTP server IPv4 address.

Correct Answer: B

Section: Mix Questions

Explanation

Explanation/Reference:

Explanation:

QUESTION 38

Which of these needs to be enabled in Cisco Unified Communications Manager in order for the Cisco TelePresence System 500-32 to be able to share a presentation with a Cisco TelePresence System Codec C40 endpoint that is registered to a VCS?

- A. Allow iX application media
- B. Send send-receive SDP in mid-call invite

- C. Allow presentation sharing using BFCP
- D. Allow presentation sharing using H.235
- E. Deliver conference bridge identifier

Correct Answer: C

Section: Mix Questions

Explanation

Explanation/Reference:

Explanation:

QUESTION 39

What is the main difference between a Cisco TelePresence Multipoint Control Unit and a Cisco TelePresence Multipoint Switch?

- A. The Cisco TelePresence Multipoint Control Unit is a hardware bridge. The Cisco TelePresence Multipoint Switch is a software bridge.
- B. The Cisco TelePresence Multipoint Control Unit is a software bridge for immersive and non-immersive endpoints. The Cisco TelePresence Multipoint Switch is a hardware bridge for non-immersive endpoints.
- C. The Cisco TelePresence Multipoint Control Unit delivers automatic voice-activated switching. The Cisco TelePresence Multipoint Switch provides active presence.
- D. The Cisco TelePresence Multipoint Control Unit has a latency of less than 10 ms, whereas the Cisco TelePresence Multipoint Switch has a latency of 100 ms.

Correct Answer: A

Section: Mix Questions

Explanation

Explanation/Reference:

Explanation:

QUESTION 40

When placing a call from Cisco Jabber Video for TelePresence to the Cisco TelePresence System Codec C40, which FECCs are available?

- A. Only zoom-in and zoom-out are available.
- B. Only left and right are available.
- C. Only up and down are available.
- D. No FECC is available.
- E. Left, right, up, down, zoom-in, and zoom-out are all available.

Correct Answer: E

Section: Mix Questions

Explanation

Explanation/Reference:

Explanation:

QUESTION 41

Which statement is correct regarding the difference between Multisite and Multiway conferencing?

- A. Multisite requires configuration on the endpoint, whereas Multiway requires the Multiway options key to be installed.
- B. Multisite requires the presence of a multipoint control unit, whereas Multiway relies on the endpoint conferencing capability.
- C. Multisite is used to conference in multiple sites, whereas Multiway is intrasite multipoint conferencing.
- D. Multisite requires the Multisite options key to be installed and configured at the endpoint, whereas Multiway requires a Cisco TelePresence Video Communications Server and a centralized multipoint control unit.

Correct Answer: D

Section: Mix Questions

Explanation

Explanation/Reference:

Explanation:

QUESTION 42

Refer to the exhibit.



Which two of these can cause the phone status error icon that is shown in the exhibit? (Choose two.)

- A. The Cisco Unified Communications Manager IM and Presence Service is not available.
- B. The username and password in Cisco Jabber phone services are misconfigured.
- C. The Cisco Jabber initial audio and video settings need to be set.
- D. There is no DN configured for the Cisco Unified Client Services Framework in Cisco Unified Communications Manager.
- E. The Cisco Jabber does not have the correct phone button template and hence cannot register to the Cisco Unified Communications Manager.
- F. The called user presence status is unknown.

Correct Answer: BD

Section: Mix Questions

Explanation

Explanation/Reference:

Explanation:

QUESTION 43

Which two of these can cause registration problems for a Cisco TelePresence Codec C40 endpoint running in H.323 mode? (Choose two.)

- A. The IP default gateway address is incorrect for the endpoint.
- B. The H.323 license stack is not added to the endpoint.
- C. The MAC address for the endpoint has not been added to the Cisco TelePresence VCS.
- D. The E.164 H323Alias has not been configured on the endpoint.
- E. The URI address has not been configured on the endpoint.

Correct Answer: AD

Section: Mix Questions

Explanation

Explanation/Reference:

Explanation:

QUESTION 44

What is the main difference between Cisco Jabber and Cisco Jabber Video for TelePresence?

- A. Cisco Jabber registers to the Cisco Unified Communications Manager, whereas Cisco Jabber Video for TelePresence registers to the VCS.

- B. Cisco Jabber Video for TelePresence registers to Cisco Unified Communications Manager, whereas Cisco Jabber registers to the VCS.
- C. Cisco Jabber has no video calling capabilities, whereas Cisco Jabber Video for TelePresence has video capabilities.
- D. Cisco Jabber has no presence capabilities, whereas Cisco Jabber Video for TelePresence has presence capabilities.
- E. There is no difference between Cisco Jabber and Cisco Jabber Video for TelePresence. They should not coexist in the same network.

Correct Answer: A

Section: Mix Questions

Explanation

Explanation/Reference:

Explanation:

QUESTION 45

In this item, you will need to use all information presented to you to successfully answer the question.

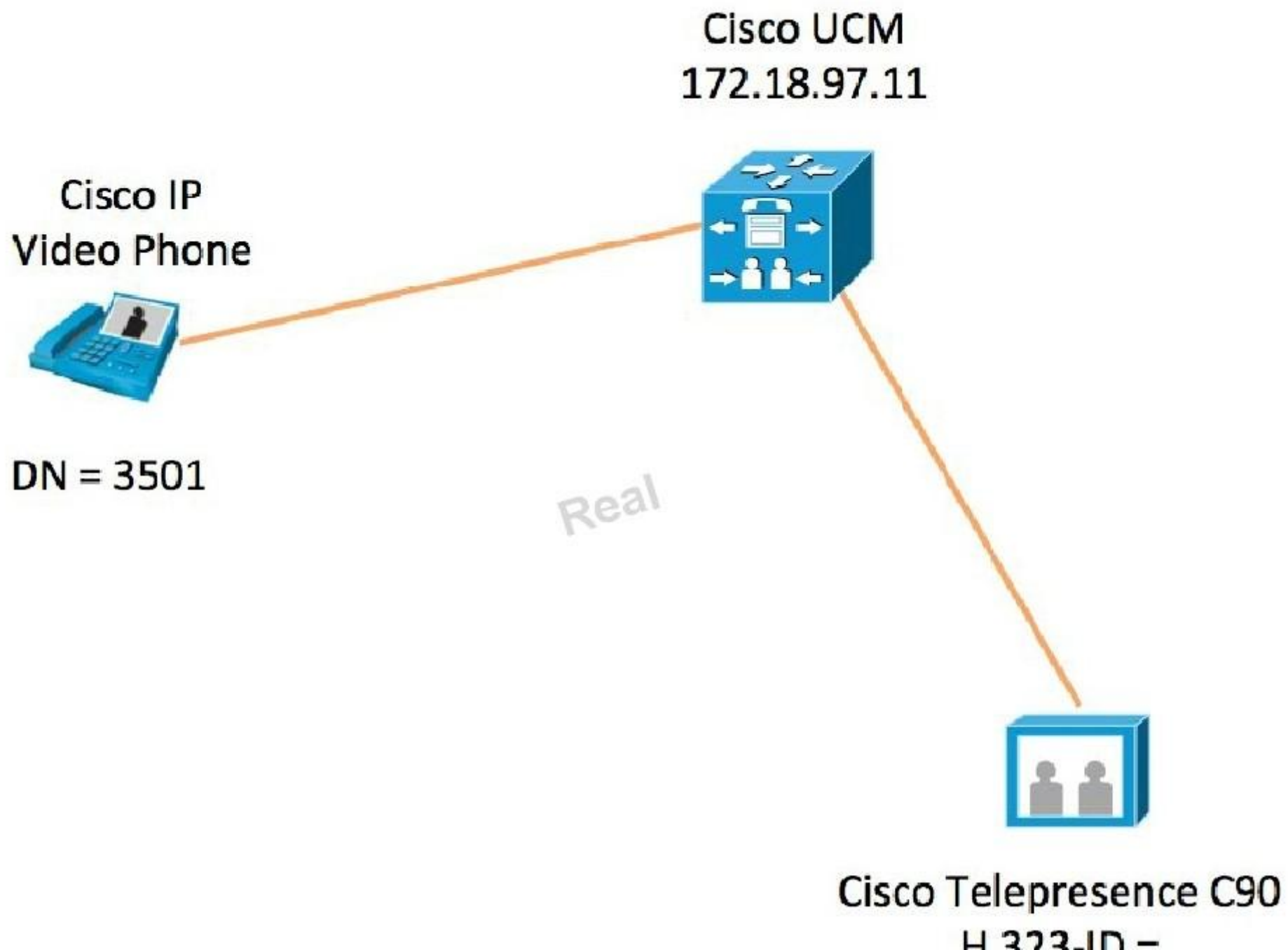


Exhibit1

Phone Configuration

Save

Delete

Copy

Reset

Apply Config

Add New

Status

Status: Ready

Association Information

Modify Button Items

1

7718

7719

Line [1] - 3506 in Devices

----- Unassigned Associated Items -----

2

7718

7719

Line [2] - Add a new DN

Phone Type

Product Type: Cisco TelePresence Codec C90

Device Protocol: SIP

Device Information

Registration	Unknown
IP Address	Unknown
<input checked="" type="checkbox"/> Device is Active	
<input checked="" type="checkbox"/> Device is trusted	
MAC Address *	0050608229A4
Description	Telepresence Codec C90
Device Pool *	Default
Common Device Configuration	< None >
Phone Button Template *	Standard Cisco TelePresence Codec C90
Common Phone Profile *	Standard Common Phone Profile
Calling Search Space	All_Devices
AAR Calling Search Space	< None >
Media Resource Group List	< None >
User Hold MOH Audio Source	< None >
Network Hold MOH Audio Source	< None >

[Diagnostics](#)[Configuration](#)[Call Control](#)[Maintenance](#)

Advanced Configuration

[Audio](#)[Cameras](#)[Conference 1](#)[Experimental](#)[FacilityService](#)[GFI0](#)[H323](#)[Network 1](#)[NetworkPort 2](#)[NetworkServices](#)[Phonebook Server 1](#)[Provisioning](#)

H323

NAT

Address

(Length must be from 0 to 64)

Mode

Profile 1

CallSetup Mode

PortAllocation

Authentication

LoginName

(Length must be from 0 to 50)

Exhibit2

GPIO

H323

Network 1

NetworkPort 2

NetworkServices

Phonebook Server 1

Provisioning

RTP Ports Range

SIP Profile 1

Security

SerialPort

Standby

SystemUnit

Time

UserInterface

Video

Profile 1

CallSetup Mode

Gatekeeper

PortAllocation

Dynamic

Authentication

LoginName

ok

(Length must be from 0 to 50)

Mode

On

Password

ok

(Length must be from 0 to 50)

Gatekeeper

Address

172.18.97.11

ok

(Length must be from 0 to 255)

Discovery

Manual

H323Alias

E164

ok

(Length must be from 0 to 30)

ID

090-5@cs1147.local

ok

(Length must be from 0 to 49)

The Cisco Telepresence Codec C90 is unable to call the Cisco IP Video Phone. Assuming that the calling search space has been configured correctly, which of the these can cause this issue?

- A. The Cisco Telepresence Codec C90 can only be registered to a Cisco Telepresence Video Communication Server.
- B. A multipoint control unit is required in order for the call to work.
- C. The Cisco Telepresence Codec C90 can only be registered as a SIP endpoint to Cisco Unified Communications Manager. H.323 is not supported.
- D. URI dialing has not been configured on Cisco Unified Communications Manager.
- E. The Cisco Telepresence Codec C90 Profile 1 > CallSetupMode must be configured as a gateway since Cisco Unified Communications Manager does not have a gatekeeper functionality.
- F. The Cisco Telepresence Codec C90 is not registered as a SIP endpoint on Cisco Unified Communications Manager. The Cisco Telepresence Codec C90 needs to be registered as both SIP and H.323.

Correct Answer: E

Section: Mix Questions

Explanation

Explanation/Reference:

Explanation:

QUESTION 46

Refer to the exhibit.

Real 24

Cisco 210-065 Exam

```

RemoteParticipant::propose60fpsThreshold(p=6, ch=4): Did not find mixer
((nil)) or channel (0x482e29d4)
Aug 7 22:25:49 (none) main: 208.88 MC I:
RemoteParticipant::reevalRefMode(p=6, ch=4) set ref [Data (4): H.224-
HDL3 64k ] q= auto, t60=6000
Aug 7 22:25:49 (none) main: 208.88 MC I: MediaServerAction():
InputGate(ig=66) creation took 714 milliseconds
Aug 7 22:25:49 (none) main: 208.88 MC I: Mc::CallRequest(p=6) from
"c60<sip:52902511@dca221.test>" to "sip:multiway221@os1147.local"
Aug 7 22:25:49 (none) main: 208.88 SipCall I: ==== makeOutgoingCall
appId=6, stackId=na
Aug 8 02:25:49 arm4 video4: 208.55 DEC_FSM-4 I:
DEC_Decoding_doVIDDECStopReq
Aug 7 22:25:49 (none) main: 208.88 Bfcp I: BFCP context using IPv4,
172.29.25.211:5070, UDP
Aug 7 22:25:49 (none) main: 208.89 SipCall I:
sip_call_handler::handleSIPMRtpLocalCapsetInd(6/-1/-1, capsetentries:
25): Received local capset with payload types set
Aug 7 22:25:49 (none) main: 208.89 MC I:
RemoteParticipant::configureIncomingChannel: Capability table:
Aug 7 22:25:49 (none) main: 208.89 DATACTRL I: DataGateCfgReq(ig=5)
hdlc=yes
Aug 8 02:25:49 arm0 video0: 208.40 ENC_FSM-0 I: configure framerate
3000, bitrate 448000, packetsize 0, fragmentsize 1360, dynamicmbps
108000, staticmbps 323500, fluxpacketlength 0
Aug 8 02:25:49 arm0 video0: 208.42 ENC_FSM-0 I: stop
Aug 8 02:25:49 arm4 vpe2: Note: window 5 not yet supported by the fpga
Aug 7 22:25:50 (none) main: 209.10 VIDEOCTRL-0 I: (proxy,161) maximum
number of framestorage slices 2
Aug 8 02:25:50 arm4 videogw: VPOutput_Start: vpDispStart
Aug 8 02:25:50 arm4 videogw: startVideoPort: Setting max size to
1920x1200
Aug 8 02:25:50 arm4 videogw: Thread FS_VP_OUTPUT has TID 1058
Aug 7 22:25:50 (none) main: 209.13 MC W: Mcfsm::handleOtherMessages()
unknown msg SIPM Redirected from EPApp1

```

What can be deduced from the log shown in the exhibit, which was taken from a Cisco TelePresence Codec C60?

- A. A direct call to 52902511 is being made.
- B. A Multiway call to multiway221@osl147.local is being made.
- C. No calls are being attempted by the endpoint.
- D. A BFCP call is being initiated.
- E. The endpoint is receiving a call from the VCS.

Correct Answer: B

Section: Mix Questions

Explanation

Explanation/Reference:

Explanation:

QUESTION 47

Refer to the exhibit.



Under which tab can the registration status for the endpoint be found?

- A. Diagnostics
- B. Configuration
- C. Call Control
- D. Maintenance

Correct Answer: A

Section: Mix Questions

Explanation

Explanation/Reference:

answer is verified.

QUESTION 48

Which two of these are required in order to complete the password recovery of a Cisco TelePresence System endpoint? (Choose two.)

- A. must have FTP enabled on the endpoint
- B. must have SSH enabled on the endpoint
- C. must have the security question answer for the endpoint
- D. must be in the same room as the main display
- E. must have SFTP enabled on the endpoint
- F. must call Cisco TAC for the security code

Correct Answer: BD

Section: Mix Questions

Explanation

Explanation/Reference:

Explanation:

QUESTION 49

In this item, you will need to use all information presented to you to successfully answer the question.

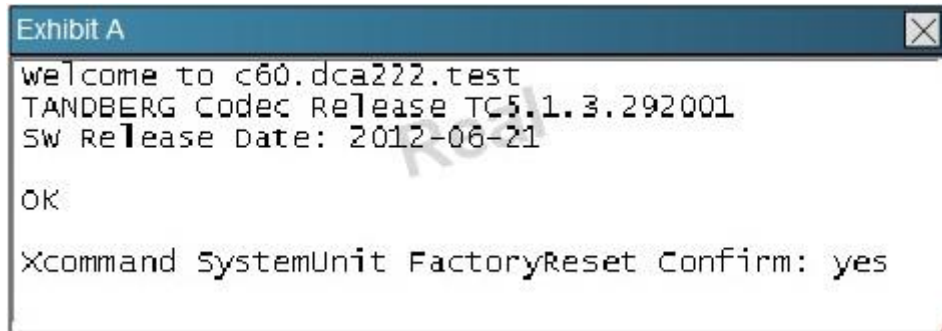



Exhibit B

 **c60.dca222.test**

System Type: TANDEERG Codec C60 System status: Idle Network Address: 172.29.24.120 Connectivity: Reachable on LAN

Summary

Settings

Call Status

Phone Book

Connection

Permissions

Logs

View Settings

Edit Settings

Extended Settings

Compare Settings

Permanent Settings

Ticket History

General

Name:

c60.dca222.test

Status:

Idle

System Type:

TANDEERG Codec C60

Your Access:

Read, Set Permissions, Book, Manage Calls, Edit Settings

System Usage Type:

Meeting Room

Provisioned:

☐

System Connectivity:

Reachable on LAN

System Contact:

Network Address:

172.29.24.120

Alert System Contact when Booked:

No

Manufacturer:

TANDEERG

Description:

MAC Address:

00:50:00:00:25:07

IP Zone:

default

Time Zone:

(GMT - 05:00) Eastern Time (US & C)

Password:

Configuration

Software Version:

TCS 1.3.202001

Last Settings Backup:

Not Registered

Hardware Serial No:

F1AD46D00032

Last Settings Restore:

Not Registered

Call Settings

Maximum IP Bandwidth:

5000

E.164 Alias 1:

52024116

Max Number of Video Calls:

0

E.323 ID 1:

c60@dca222.test

Max Number of Audio Calls:

0

SP URI 1:

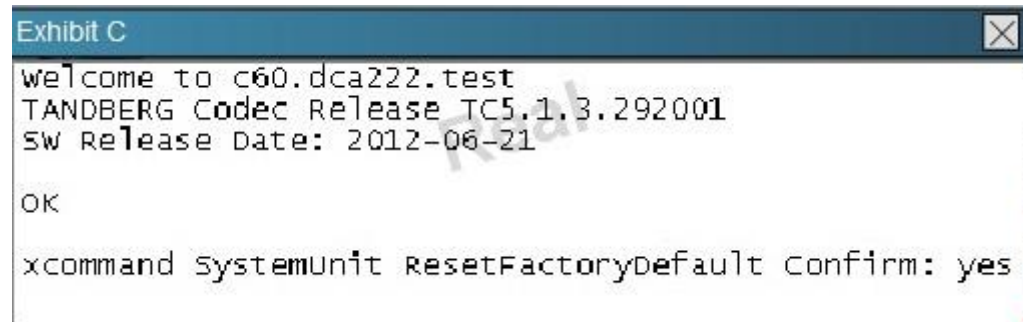
sip:c60@dca222.test

Microphone:

On

Volume:

100



[Diagnostics](#)[Configuration](#)[Call Control](#)[Maintenance](#)

System Information

General

System name: c60.dca222.test
Software version: TC5.1.3.292001
Product: TANDBERG Codec C60
Serial number: F1AD46D00032
IP address: 172.29.24.120
MAC address: 00:50:60:0D:29:37
Valid release key: No
Installed options: NaturalPresenter, MultiSite, PremiumResolution

[Software Upgrade](#)[Certificate Management](#)[Audit Certificate](#)[User Administration](#)[Restart](#)[Factory Reset](#)

SIP

URI: sip:c60@dca222.test
Proxy: 172.31.222.70
Status: Registered

Sign In Information

Last successful sign in: Thu Jul 26 12:29:37 2012

Unsuccessful authorization attempts since last sign in: 0

Password expires in: Never


```
Exhibit E
Command Line Interface is starting up, please wait ...

Welcome to the Platform Command Line Interface

VMware Installation:
  2 vCPU: Intel(R) Xeon(R) CPU           X7550  @ 2.00GHz
  Disk 1: 80GB
  4096 Mbytes RAM

admin:Utils System Reset_Factory_Defaults
```

Refer to the exhibits. An administrator needs to perform a factory reset on a C-Series endpoint. What are two valid ways to accomplish this task? (Choose two.)

- A. Exhibit A
- B. Exhibit B
- C. Exhibit C
- D. Exhibit D
- E. Exhibit E

Correct Answer: CD

Section: Mix Questions

Explanation

Explanation/Reference:

Explanation:

QUESTION 50

You have been informed from the field that a new Cisco TelePresence video endpoint has been deployed with an IPv4 address of 172.28.254.45. You need to check for connectivity from the Cisco Unified Communications Manager server. Which command should be entered to check for network connectivity?

- A. utils network traceroute newsystem.domain254.local
- B. utils network ping 172.28.254.45
- C. ping 172.28.254.45

- D. traceroute 172.28.255.255
- E. utils network host cucm.osl147.local

Correct Answer: B

Section: Mix Questions

Explanation

Explanation/Reference:

Explanation:

QUESTION 51

Which CLI command can be used to reset the Cisco TelePresence System 500-32 personal video system to a factory condition?

- A. utils factory reset 2
- B. utils system factory init
- C. xcommand defaultvalues set level: 2
- D. xconfiguration default factory
- E. utils reset factory
- F. xcommand SystemUnit FactoryReset

Correct Answer: B

Section: Mix Questions

Explanation

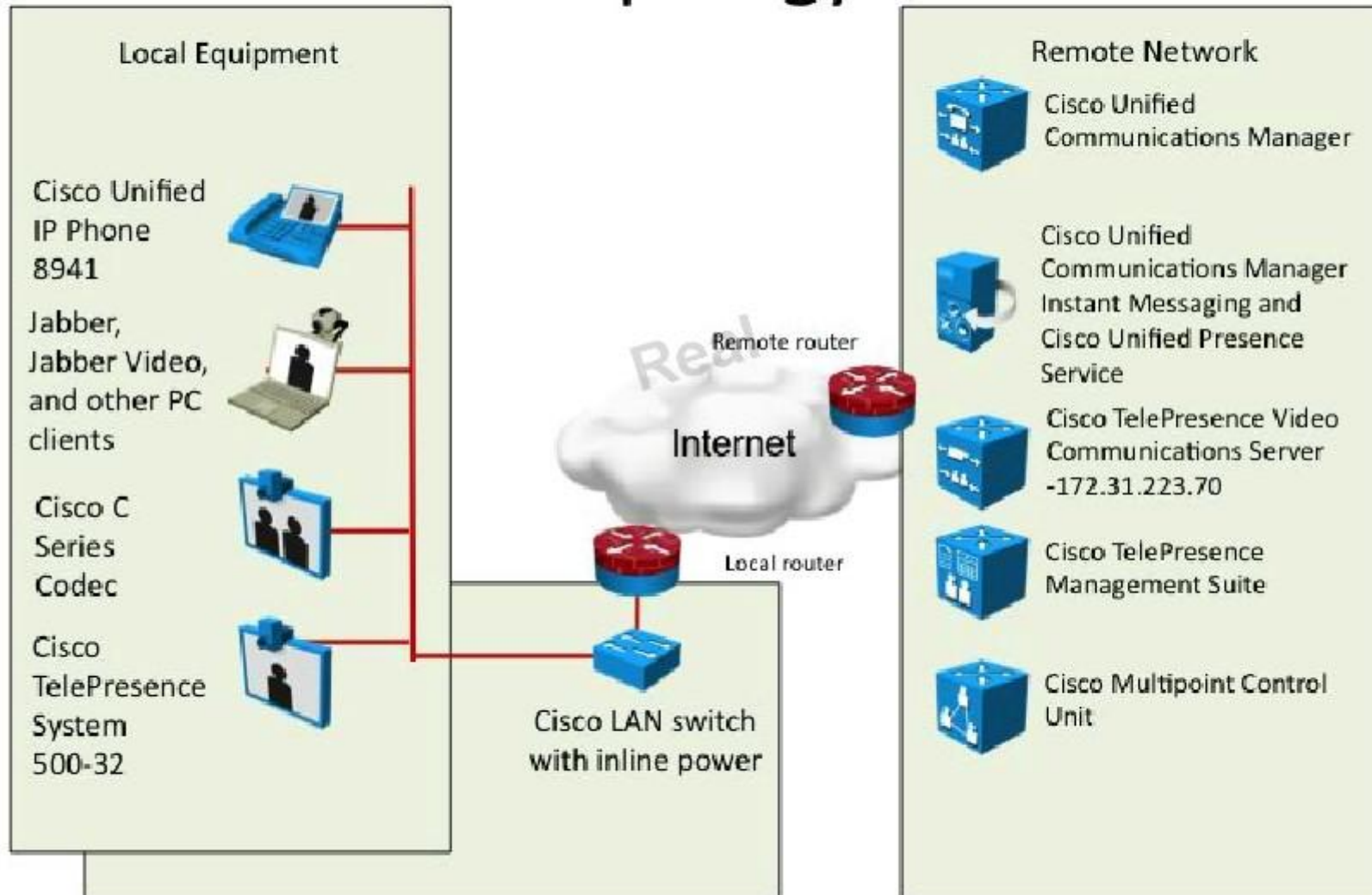
Explanation/Reference:

Explanation:

QUESTION 52

In this item, you will need to use all information presented to you to successfully answer the question.

Topology



! Local Router DHCP Configurationip dhcp pool Datanetwork 172.29.2.0 255.255.255.0default router 172.29.2.1 255.255.255.0ip dhcp pool VoiceVideonetwork 172.29.1.0 255.255.255.0default router 172.29.1.1 255.255.255.0option 150 172.16.147.30

Real

***c xconfiguration from the Codec**

xconfig network 1

*c xConfiguration Network 1 VLAN Voice Mode: Off

---snip---

*c xConfiguration Network 1 DNS Server 1 Address: "172.31.250.5"

*c xConfiguration Network 1 DNS Server 2 Address: "172.16.250.5"

*c xConfiguration Network 1 DNS Server 3 Address: "172.20.250.5"

*c xConfiguration Network 1 DNS Server 4 Address: "198.6.1.4"

*c xConfiguration Network 1 DNS Server 5 Address: ""

*c xConfiguration Network 1 DNS Domain Name: "dca223.local"

-- snip --

*c xConfiguration Network 1 MTU: 1360

*c xConfiguration Network 1 TrafficControl Mode: On

*c xConfiguration Network 1 RemoteAccess Allow: ""

*c xConfiguration Network 1 IPv4 SubnetMask: "255.255.255.128"

*c xConfiguration Network 1 IPv4 Gateway: "172.29.1.1"

*c xConfiguration Network 1 IPv4 Address: "172.29.1.221"

-- snip --

*c xConfiguration NetworkServices H323 Mode: On

*c xConfiguration NetworkServices SIP Mode: On

*c xConfiguration NetworkServices NTP Mode: Manual

*c xConfiguration NetworkServices NTP Address: "172.16.250.5"

The C-Series endpoint (codec) does not register with the Video Communication Server that is located in a different network. Based on the exhibits, what could be causing the issue?

- A. The subnet mask on the codec is incorrect.
- B. The ip address of the codec is incorrect.
- C. The interface that the codec is in is in the wrong VLAN.
- D. The codec did not receive a DHCP address from the DHCP server.

Correct Answer: A

Section: Mix Questions

Explanation

Explanation/Reference:

Explanation:

The subnet mask configured on the codec is 255.255.255.128, when it should be 255.255.255.0.

QUESTION 53

Which three of these are functions of the Cisco TelePresence Management Suite? (Choose three.)

- A. automatic software update and release keys
- B. intelligent call routing engine
- C. provisioning a Cisco TelePresence System endpoint
- D. tracing SIP and H.323 calls
- E. managing phonebooks for endpoints that are registered to the Cisco Unified Cisco Unified Communications Manager
- F. rebooting endpoints that are registered to the Cisco TelePresence Video Communications Server

Correct Answer: ABF

Section: Mix Questions

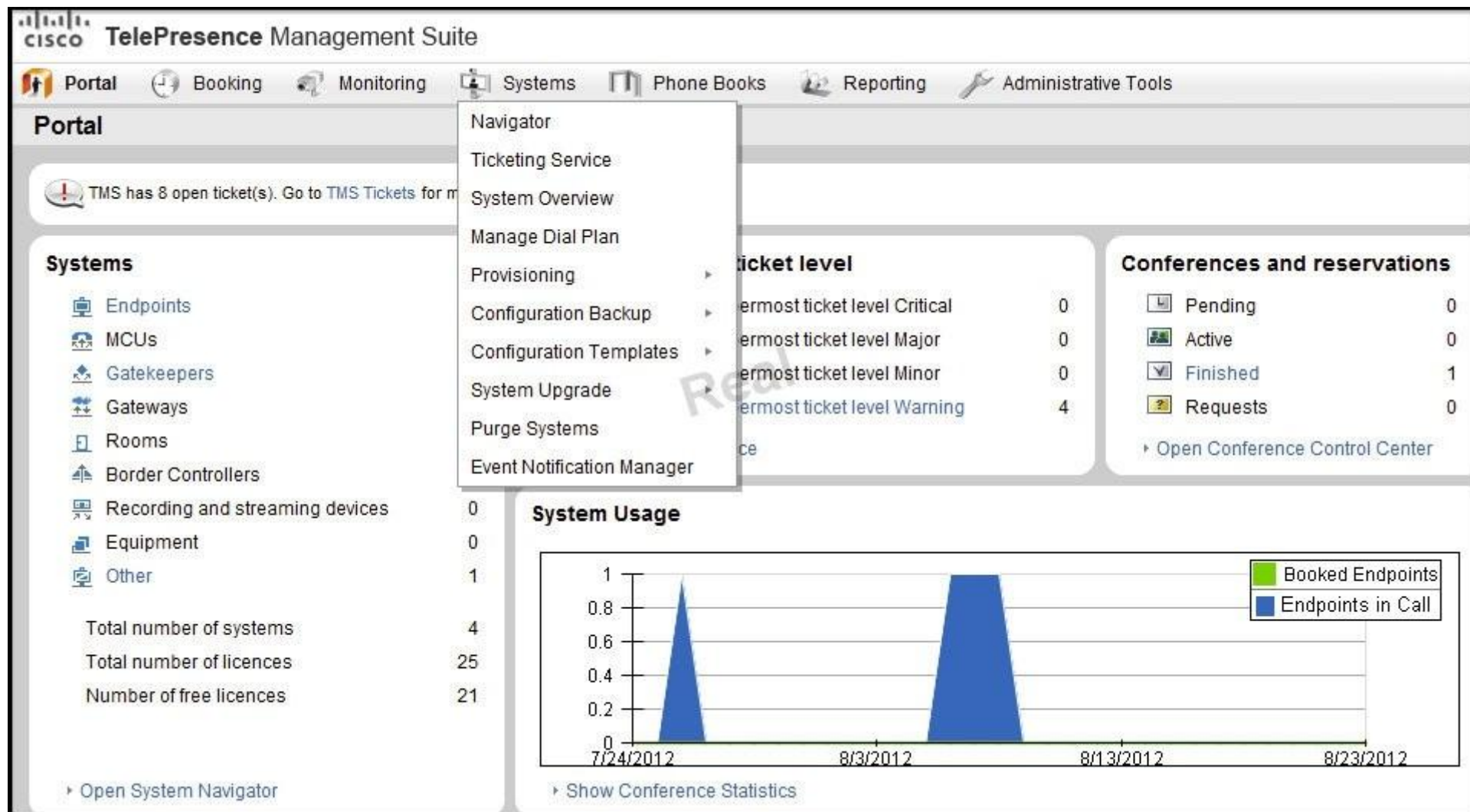
Explanation

Explanation/Reference:

Explanation:

QUESTION 54

Refer to the exhibit.



Which system tab can be used to add video infrastructure devices and endpoints?

- A. Navigator
- B. System Overview
- C. Configuration Templates

- D. Provisioning
- E. Administrative Tools

Correct Answer: A

Section: Mix Questions

Explanation

Explanation/Reference:

Explanation:

QUESTION 55

Which two layout or switching modes are supported with the Cisco TelePresence Multipoint Switch? (Choose two.)

- A. enhanced continuous presence
- B. active speaker switching
- C. continuous presence
- D. speaker switching
- E. room switching
- F. active continuous presence

Correct Answer: DE

Section: Mix Questions

Explanation

Explanation/Reference:

Explanation:

QUESTION 56

Which Cisco TelePresence Multipoint Control Unit Layout view mode gives prominence to one conference participant over the other conference participants while still allowing conference participants to view multiple participants at the same time?

- A. enhanced continuous presence
- B. active speaker
- C. continuous presence
- D. room switching
- E. speaker switching

Correct Answer: A

Section: Mix Questions

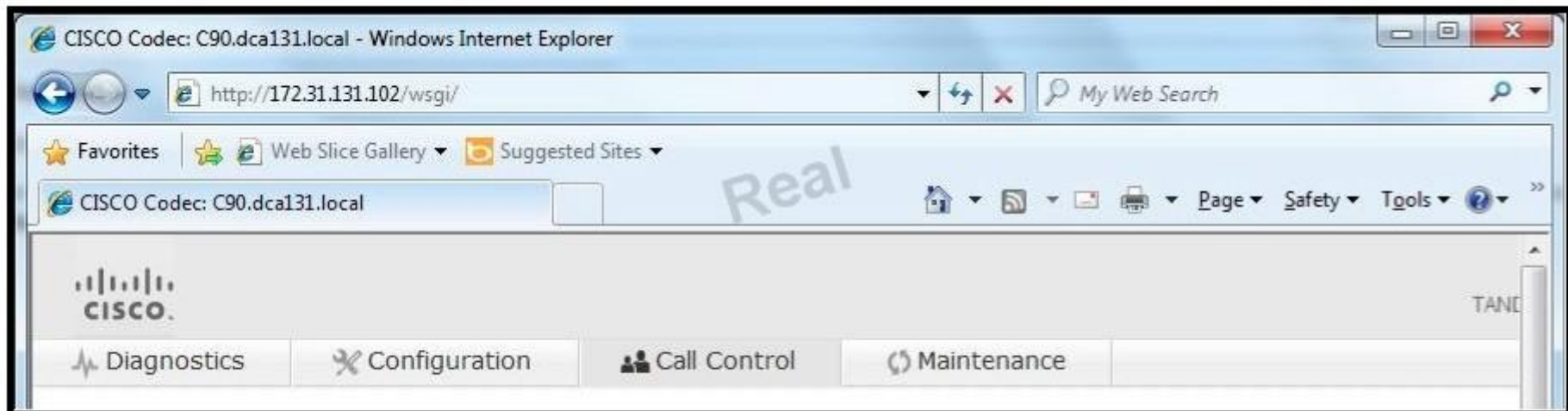
Explanation

Explanation/Reference:

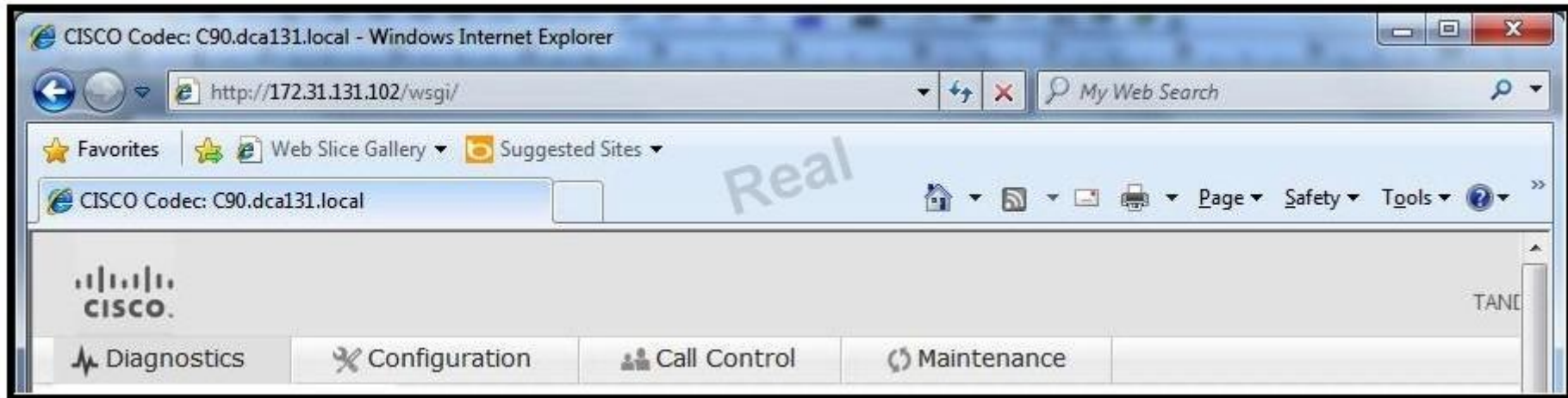
QUESTION 57

An important Cisco TelePresence video multipoint call is in progress and you are getting complaints of pixilation of the video and poor audio quality on one of the involved systems. Which page would be a good place to start for troubleshooting the issue on the affected endpoint?

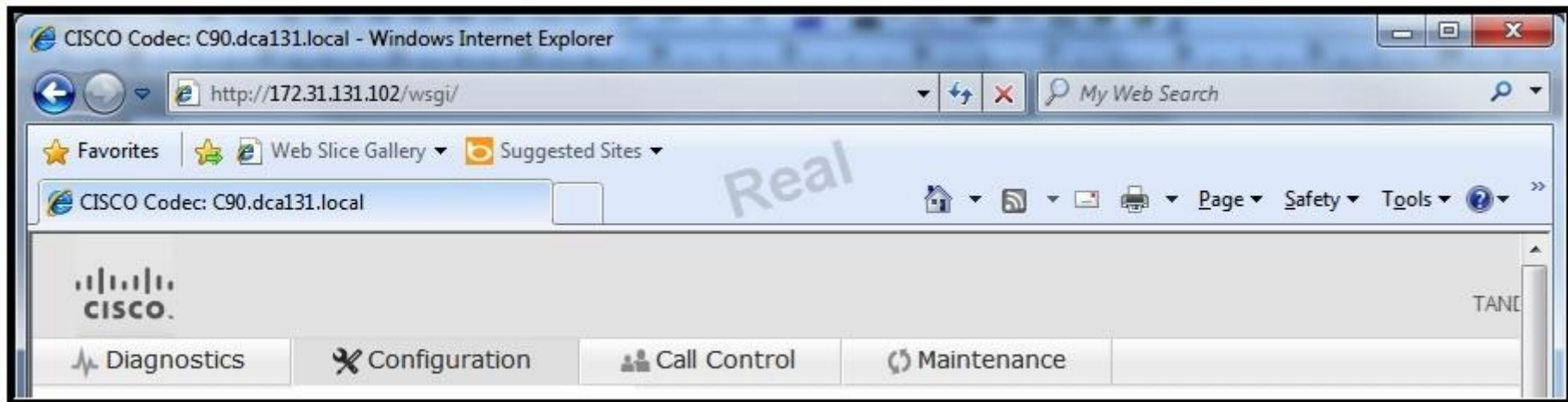
A.



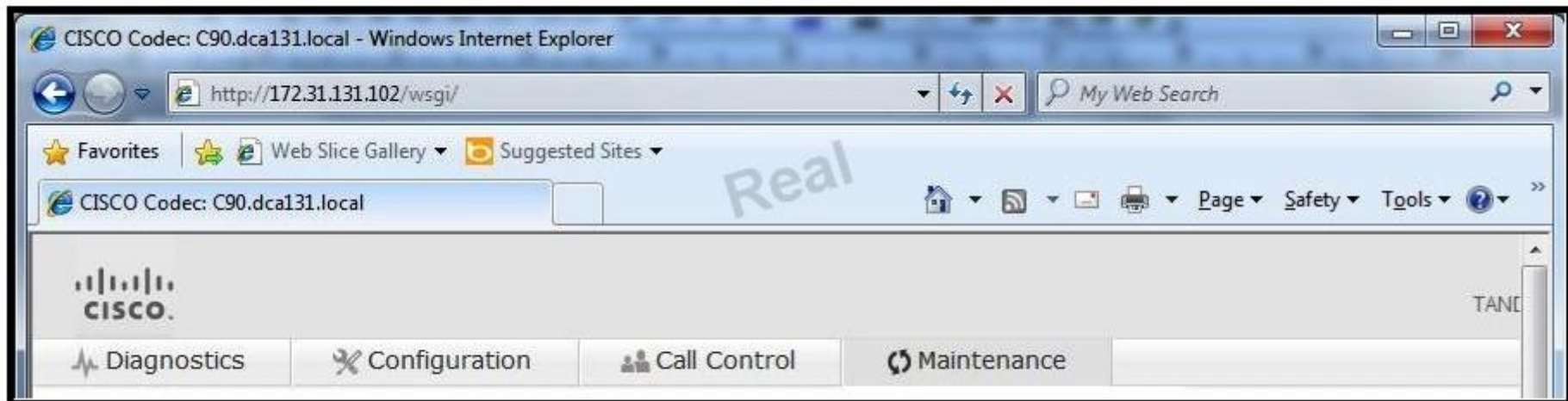
B.



C.



D.



- A. Exhibit A
- B. Exhibit B
- C. Exhibit C
- D. Exhibit D

Correct Answer: A

Section: Mix Questions

Explanation

Explanation/Reference:

Explanation:

QUESTION 58

Which two of these support an ad-hoc conference call? (Choose two.)

- A. Cisco TelePresence Multiway with Cisco TelePresence Multipoint Control Unit and Cisco TelePresence Video Communications Server
- B. using the Cisco TelePresence Management Suite Scheduler to schedule a conference call to start in 5 minutes
- C. using the Booking tab in the Cisco TelePresence Management Suite to configure a new conference
- D. using the tab Administrative Tools > Configuration > Conference Settings in the Cisco TelePresence Management Suite
- E. pressing the conference button on a Cisco Unified IP Phone 8941 to conference in a third call

Correct Answer: AE
Section: Mix Questions
Explanation

Explanation/Reference:
Explanation:

QUESTION 59
Refer to the exhibit.



Advanced Configuration

Search ...

Audio

Cameras

Conference 1

Experimental

FacilityService

GPIO

H323

Network 1

NetworkPort 2

NetworkServices

Phonebook Server 1

Provisioning

RTP Ports Range

SIP Profile 1

Security

SerialPort

Standby

SystemUnit

Time

UserInterface

Video

SystemUnit

CallLogging Mode

On

ContactInfo Type

Auto

IrSensor

Auto

MenuLanguage

English

Name

pod1-C60

ok

(Length must be from 0 to 50)

Type

Shared

Which configuration element can be used to specify the Multiway address that can be used by the endpoint to initiate Multiway calls?

- A. Conference 1
- B. NetworkServices
- C. Provisioning
- D. SIP Profile 1
- E. Video

Correct Answer: B

Section: Mix Questions

Explanation

Explanation/Reference:

Explanation:

QUESTION 60

Refer to the exhibit.



Which tab can be used in order to check the call statistics for the Cisco TelePresence Codec C60?

- A. Diagnostics
- B. Configuration
- C. Call Control
- D. Maintenance
- E. The GUI cannot be used to view call statistics.

Correct Answer: C

Section: Mix Questions

Explanation

Explanation/Reference:
answer is appropriate.