

## **Implementing Cisco IP Telephony and Video, Part 1**

Number: 300-070  
Passing Score: 800  
Time Limit: 120 min  
File Version: 1.0

**300-070**

## **Implementing Cisco IP Telephony and Video, Part 1**

## Questions

### QUESTION 1

Which three options are valid SIP URI formats? (Choose three.)

- A. jsmith@cisco.com.
- B. tel:98765@cisco.com.
- C. phone:98765@cisco.com.
- D. sip:12345@10.10.10.10:5060;user=phone.
- E. sip:bob.cisco.com.

**Correct Answer:** ABD

**Section:** (none)

**Explanation**

**Explanation/Reference:**

### QUESTION 2

How do you configure calling privileges on Cisco Unified Communications Manager Express?

- A. Corlist.
- B. Translation profile.
- C. Zones.
- D. Access list.
- E. Search rules.

**Correct Answer:** A

**Section:** (none)

**Explanation**

**Explanation/Reference:**

### QUESTION 3

Which DiffServ PHB classification is recommended by Cisco for interactive video traffic?

- A. AF31.
- B. CS3.
- C. EF.

- D. AF41.
- E. CS4.

**Correct Answer:** D

**Section:** (none)

**Explanation**

**Explanation/Reference:**

#### **QUESTION 4**

**Which three descriptions are true? (Choose three.)**

- A. The class of service is a parameter that is used for traffic classification and marking at Layer 2.
- B. The IP precedence is a parameter that is used for traffic classification and marking at Layer 2.
- C. The differentiated services code point is a parameter that is used for traffic classification and marking at Layer 2.
- D. The class of service is a parameter that is used for traffic classification and marking at Layer 3.
- E. The IP precedence is a parameter that is used for traffic classification and marking at Layer 3.
- F. The differentiated services code point is a parameter that is used for traffic classification and marking at Layer 3.

**Correct Answer:** AEF

**Section:** (none)

**Explanation**

**Explanation/Reference:**

#### **QUESTION 5**

**What are the two benefits of using SIP dial rules on an IP phone? (Choose two)**

- A. The phone can initiate dialing without sending any signaling messages to Cisco Unified Communications Manager.
- B. The phone can detect invalid numbers and play a reorder tone without sending any signaling messages to Cisco Unified Communications Manager.
- C. If dialed digits match an entry of a SIP dial rule, the dialed string is sent in a single SIP 200 OK message to Cisco Unified Communications Manager.
- D. If Cisco Unified Communications Manager requires more digits, KPML can be used to send the remaining digits from the SIP phone to Cisco Unified Communications Manager one-by-one.
- E. If Cisco Unified Communications Manager requires more digits, another en bloc message is used to send the remaining digits from the SIP.

**Correct Answer:** BD

**Section:** (none)

**Explanation**

**Explanation/Reference:**

**QUESTION 6**

**Which three Cisco Unified CallManager configuration steps are required to support third party SIP phones? (Choose three.)**

- A. Configure the device in Cisco Unified CallManager.
- B. Change the proxy address in the SIP phone to an IP address or the Fully Qualified Domain Name (FQDN) of Cisco Unified CallManager.
- C. Associate the device with the end user.
- D. Configure the phone with the TLS username and password.
- E. Configure the end user in Cisco Unified CallManager.
- F. Add the MAC address of the Cisco Unified CallManager server to the SIP phone configuration page.

**Correct Answer:** ACE

**Section:** (none)

**Explanation**

**Explanation/Reference:**

**QUESTION 7**

**Which four software based media resources require that the Cisco IP voice media stream Application be activated?**

- A. MOH.
- B. SIP.
- C. H.323 Gateways.
- D. Annunciator.
- E. Gatekeeper.
- F. MTP.
- G. Audio conferencing.

**Correct Answer:** ADFG

**Section:** (none)

**Explanation**

**Explanation/Reference:**

**QUESTION 8**

**You need to delete an auto-registration Cisco Unified Communications Manager group for a cluster. What should you do?**

- A. Remove the Cisco Unified CallManager group devices.
- B. Disable auto-registration settings in the Cisco Unified CallManager group.
- C. Assign a different call group as the auto-registration Cisco Unified CallManager group.
- D. Delete the auto-registration Cisco Unified CallManager group without performing any action.

**Correct Answer: C**

**Section: (none)**

**Explanation**

**Explanation/Reference:**

#### **QUESTION 9**

**Which of these determines the Cisco Unified Communications Manager server to which an IP phone registers?**

- A. The Cisco Unified Communications Manager group is configured with a Device Pool that designates the primary, secondary, and tertiary servers in the group.
- B. Each IP phone is configured with a Device Pool containing the Cisco Unified Communications Manager group that determines which server the IP phone will use as its primary, secondary, and tertiary server.
- C. Each IP phone is configured with its primary, secondary, and tertiary server.
- D. The Cisco Unified Communications Manager group is configured in the publisher to designate the IP phone groups that will register with the primary, secondary, and tertiary servers in the group.

**Correct Answer: B**

**Section: (none)**

**Explanation**

**Explanation/Reference:**

#### **QUESTION 10**

**Which Cisco Unified Communications Manager menu path is used to access the softkey template configuration window?**

- A. Device > Device Settings > Softkey Templates.
- B. Device Settings > Softkey Templates.
- C. IP Phone > Template > Softkey.
- D. Device > IP Phone > Template > Softkey.

**Correct Answer:** A

**Section:** (none)

**Explanation**

**Explanation/Reference:**

#### **QUESTION 11**

**Where is a Local Route Group configuration applied?**

- A. In each IP phone.
- B. In each device pool.
- C. In each location.
- D. In each region.
- E. In each route list

**Correct Answer:** B

**Section:** (none)

**Explanation**

**Explanation/Reference:**

#### **QUESTION 12**

**If no SIP dial rules are configured on an IP phone, at which three points in the collection of digits does a Type A SIP phone send digits to the Cisco Unified Communications Manager? (Choose three.)**

- A. When the interdigit timer expires.
- B. When the collected digits match a SIP dial rule.
- C. When the user presses the Dial softkey.
- D. As each digit is collected (it is sent for analysis).
- E. When the user presses the # key.

**Correct Answer:** ACE

**Section:** (none)

**Explanation**

**Explanation/Reference:**

**QUESTION 13**

If the route patterns 5XXX, 51XX, 513X, and 5134 exist within a call route database, which pattern would be matched if the dialed number was 5124?

- A. 5XXX.
- B. 51XX.
- C. 513X.
- D. 5134.

**Correct Answer:** B

**Section:** (none)

**Explanation**

**Explanation/Reference:**

**QUESTION 14**

If the route patterns 5XXX, 51XX, 513X, and 5134 exist within a call route database, which pattern would be matched if the dialed number was 5324?

- A. 5XXX.
- B. 51XX.
- C. 513X.
- D. 5134.

**Correct Answer:** A

**Section:** (none)

**Explanation**

**Explanation/Reference:**

**QUESTION 15**

Which two options are resources in a route list that route calls that match a defined route pattern? (Choose two.)

- A. Gateways.
- B. Route groups.
- C. Virtual machine servers.
- D. IP phones.

**Correct Answer:** AB

**Section:** (none)

**Explanation**

**Explanation/Reference:**

#### **QUESTION 16**

**Which statement about the relationship between gateways and route groups is true?**

- A. Each gateway can belong to only one route group and can be listed only once within that route group.
- B. Each gateway can belong to only one route group and can be listed multiple times within that route group.
- C. Each gateway can belong to multiple route groups and can be listed only once within each route group.
- D. Each gateway can belong to multiple route groups and can be listed multiple times within each route group.

**Correct Answer:** C

**Section:** (none)

**Explanation**

**Explanation/Reference:**

#### **QUESTION 17**

**Which discard digits instruction removes the access code from a number before passing the number onto an adjacent system?**

- A. PreDot.
- B. PreAt.
- C. NoDigits.
- D. Trailing-#.

**Correct Answer:** A

**Section:** (none)

**Explanation**

**Explanation/Reference:**

#### **QUESTION 18**

**Which discard digits instruction removes all digits prior to the North American Numbering Plan portion of the route pattern?**

- A. PreDot.



- B. PreAt.
- C. Pre.
- D. PreNANP.

**Correct Answer:** B

**Section:** (none)

**Explanation**

**Explanation/Reference:**

#### **QUESTION 19**

**Which two of these describe where phone services can appear on an IP phone and who can subscribe to phone services? (Choose two.)**

- A. End user.
- B. Administrator.
- C. End user and administrator.
- D. Services button.
- E. Services and Directories buttons.
- F. Services, Directories, and Messages buttons.

**Correct Answer:** CF

**Section:** (none)

**Explanation**

**Explanation/Reference:**

#### **QUESTION 20**

**Which three Cisco Unified Communications Manager settings can be used to support IP phone services? (Choose three.)**

- A. Device Defaults
- B. Enterprise Parameters.
- C. IP Phone Service Configuration window.
- D. Common Phone Profile.
- E. Service Parameters.
- F. Phone Configuration window.

**Correct Answer:** BDF

**Section: (none)**

**Explanation**

**Explanation/Reference:**

**QUESTION 21**

**Which groups will have access to the Meet-Me conference numbers that are set to use the <None> partition?**

- A. Only users that have the <None> partition assigned in their calling search space will have access to the Meet -Me conference numbers.
- B. All users will have access to the Meet-Me conference numbers.
- C. The <None> partition will prevent all users from accessing the Meet-Me conference numbers.
- D. Any IP phones with their lines configured in the <None> partition will have access to the Meet-Me conference numbers.

**Correct Answer: B**

**Section: (none)**

**Explanation**

**Explanation/Reference:**

**QUESTION 22**

**Which route pattern wildcard character is used to terminate the interdigit timeout?**

- A. \$
- B. !
- C. #
- D. .

**Correct Answer: C**

**Section: (none)**

**Explanation**

**Explanation/Reference:**

**QUESTION 23**

**When a call is attempted during a particular time of day, what determines the partitions where calling devices search?**

- A. Time schedules.

- B. Calling periods.
- C. Dial schedules.
- D. Time periods.

**Correct Answer:** A

**Section:** (none)

**Explanation**

**Explanation/Reference:**

#### **QUESTION 24**

**When configuring an H.323 gateway, which configuration option can be used to set whether an incoming call is considered off the network (OffNet) or on the network (OnNet)?**

- A. Call classification
- B. Call location.
- C. Device pool.
- D. Signaling port.

**Correct Answer:** A

**Section:** (none)

**Explanation**

**Explanation/Reference:**

#### **QUESTION 25**

**When local route groups are used and a user dials 918005551212, what component is ultimately used to route the digits to the local gateway?**

- A. The route list applied to the route pattern.
- B. The device pool of the calling device.
- C. The translation pattern.
- D. The gateway or route list associated with the +.! route pattern.

**Correct Answer:** B

**Section:** (none)

**Explanation**

**Explanation/Reference:**

**QUESTION 26**

**You are performing route pattern configuration. You need to ensure that internal extensions are automatically expanded to full external phone numbers for calling line information on outgoing calls. What should you use?**

- A. Calling extension expansion.
- B. Called number expansion.
- C. External number mask of the called party.
- D. External phone number mask of the calling party.

**Correct Answer: D**

**Section: (none)**

**Explanation**

**Explanation/Reference:**

**QUESTION 27**

**The CSS on a line includes the partitions 911, internal and local. The CSS on the device includes the partitions 911, internal, local and long distance. Which CSS will be used if the phone user dials a local number?**

- A. The device CSS will be used since the device CSS is always used first on an IP phone.
- B. Since the dialed digits are a match to a partition in both Calling Search Spaces the call will use both matched partitions in both Calling Search Spaces in a round-robin format.
- C. If there is both a line and device CSS the line device will only be used.
- D. The line and device CSSs will be combined and the device CSS will take precedence.
- E. The line and device CSSs will be combined and the line CSS will take precedence.

**Correct Answer: E**

**Section: (none)**

**Explanation**

**Explanation/Reference:**

**QUESTION 28**

**Which protocol is recommended to be used between Cisco Unified Communications Manager and the voice gateway to simplify the dial plan?**

- A. SIP.
- B. SCCP.
- C. H323.
- D. RSVP.
- E. MGCP.

**Correct Answer:** E

**Section:** (none)

**Explanation**

**Explanation/Reference:**

#### **QUESTION 29**

**Which protocol can Cisco Unified Communications Manager not use to monitor the status of the gateway?**

- A. H.323.
- B. SIP.
- C. MGCP.
- D. SCCP.

**Correct Answer:** A

**Section:** (none)

**Explanation**

**Explanation/Reference:**

#### **QUESTION 30**

**In a centralized call-processing solution, there are five sites connected through an IP WAN. To optimize the utilization of the IP WAN, CAC needs to be implemented.**

**How should CAC be implemented?**

- A. Use a gatekeeper to control allocated bandwidth properly.
- B. Use locations CAC with a single location.
- C. Use a gatekeeper and Cisco Unified Border Element to provide CAC to sites that use a combination of SIP and MGCP gateways.
- D. Use a gatekeeper to only control those locations that use H.323 gateways and a Cisco Unified Border Element to control those sites that use MGCP or SIP gateways.
- E. Use locations CAC with five locations in addition to Hub none.

**Correct Answer:** E

**Section:** (none)

**Explanation**

**Explanation/Reference:**

#### **QUESTION 31**

**What are two characteristics of a partition? (Choose two.)**

- A. Assigned to sources of call routing requests.
- B. Any group of numbers with the same reachability.
- C. Used in conjunction with calling search spaces to track calls to certain numbers.
- D. Used in conjunction with calling search spaces to restrict outgoing calls to certain numbers.
- E. Contains calling search spaces.

**Correct Answer:** BD

**Section:** (none)

**Explanation**

**Explanation/Reference:**

#### **QUESTION 32**

**Which three are functions of Cisco Unified Border Element? (Choose three.)**

- A. Client registration.
- B. H.323 and SIP interworking.
- C. Lync interworking.
- D. Transcoding.
- E. Phone proxy.
- F. Mobile and remote access.

**Correct Answer:** BDE

**Section:** (none)

**Explanation**

**Explanation/Reference:**

**QUESTION 33**

Which command is used to enter the DSP farm profile configuration mode?

- A. dspfarm-profile 100 transcode.
- B. dspfarmprofile 100 transcode.
- C. dspfarm profile 100 transcode.
- D. dspfarm 100 profile transcode.

**Correct Answer:** C

**Section:** (none)

**Explanation**

**Explanation/Reference:**

**QUESTION 34**

Which parameter is required on MCU for ad hoc conferencing?

- A. Media Port reservation.
- B. Incoming calls to unknown conferences or auto-attendants.
- C. DSP reservation for video.
- D. MCU type.
- E. MCU Conference Bridge SIP Port.

**Correct Answer:** A

**Section:** (none)

**Explanation**

**Explanation/Reference:**

**QUESTION 35**

Which three steps must you take on Cisco Unified Communications Manager to configure Cisco TelePresence Conductor for ad hoc and rendezvous conferences? (Choose three.)

- A. Verify the location configuration.
- B. Verify the certificate trusts.
- C. Configure one ICT trunk to TelePresence Conductor.
- D. Configure one SIP trunk to TelePresence Conductor.

- E. Configure two ICT trunks to TelePresence Conductor.
- F. Configure two SIP trunks to TelePresence Conductor.

**Correct Answer:** ABE

**Section:** (none)

**Explanation**

**Explanation/Reference:**

### QUESTION 36

**Which of these methods can be used to implement toll-fraud prevention?**

- A. Drop conferences when only two attendees remain.
- B. Block on-net to on-net calls.
- C. Deploy conferencing resources to only those employees that require the service.
- D. Drop conferences when no on-net party remains.

**Correct Answer:** D

**Section:** (none)

**Explanation**

**Explanation/Reference:**

### QUESTION 37

**Which four modes are available on the Cisco TelePresence MCU MSE 8510 to connect to a gatekeeper? (Choose four.)**

- A. Direct mode.
- B. H.225-routed mode.
- C. H.265-routed mode.
- D. H.245-routed mode.
- E. full proxy mode.
- F. partial proxy mode.

**Correct Answer:** ABDE

**Section:** (none)

**Explanation**

**Explanation/Reference:**



**QUESTION 38**

Which two Cisco products allow the use of a dial plan with E.164, H.323, SIP, and DNS? (Choose two.)

- A. Cisco Expressway.
- B. Cisco Unified Communications Manager.
- C. Cisco Unified Border Element.
- D. Cisco IM and Presence.
- E. Cisco TelePresence Video Communication Server.

**Correct Answer:** AE

**Section:** (none)

**Explanation**

**Explanation/Reference:**

**QUESTION 39**

Where do you configure a SIP route pattern?

- A. Call Routing > Route/Hunt > SIP Route Pattern.
- B. System > SIP Route Pattern.
- C. Call Routing > SIP Route Pattern.
- D. Advanced Features > SIP Route Pattern.

**Correct Answer:** C

**Section:** (none)

**Explanation**

**Explanation/Reference:**

**QUESTION 40**

Which three commands show the output of an active video call? (Choose three.)

- A. show vrm active\_calls.
- B. show call active video brief.
- C. show voip rtp connections.
- D. show voice call.

- E. show voice call summary.
- F. show video dsp.

**Correct Answer:** BCE

**Section:** (none)

**Explanation**

**Explanation/Reference:**

#### **QUESTION 41**

**What are two characteristics that are associated with the End User and User account types? (Choose two.)**

- A. They cannot use LDAP.
- B. They are used to authorize applications.
- C. They can utilize LDAP.
- D. The Application is associated with the End User and User account types.
- E. They can be listed in a directory.

**Correct Answer:** CD

**Section:** (none)

**Explanation**

**Explanation/Reference:**

#### **QUESTION 42**

**Which two features are advantages of deploying a cluster over WAN? (Choose two.)**

- A. Shared line appearances
- B. Centralized DSP resources.
- C. Extension mobility within the cluster.
- D. Scalability up to 20 sites, if there is sufficient IP WAN bandwidth.
- E. Failover to co-resident Cisco Unified Call Manager Express platforms.

**Correct Answer:** AC

**Section:** (none)

**Explanation**

**Explanation/Reference:**

#### QUESTION 43

The Ajax Corporation is designing an IP telephony network using Cisco MCS 7845 Series servers, each one capable of supporting 7500 devices. The design must meet these requirements:

- Be cost-effective
- Support up to 7500 phones
- Provide a minimal level of redundancy

- A. Two Cisco Unified Communications Manager servers:
  - 1 publisher and TFTP server combined.
  - 1 primary subscriber.
- B. Three Cisco Unified Communications Manager servers:
  - 1 publisher and TFTP server combined.
  - 1 primary subscriber.
  - 1 backup subscriber.
- C. Four Cisco Unified Communications Manager servers:
  - 1 publisher.
  - 1 TFTP server.
  - 1 primary subscriber.
  - 1 backup subscriber.
- D. Five Cisco Unified Communications Manager servers:
  - 1 publisher.
  - 1 TFTP server.
  - 1 primary subscriber.
  - 2 backup subscribers.

**Correct Answer:** B

**Section:** (none)

**Explanation**

**Explanation/Reference:**

#### QUESTION 44

How are Cisco Unified CallManager location parameters used?

- A. Assign directory numbers to devices as they connect to the IP telephony network.
- B. Specify the bandwidth used for audio and video calls.
- C. Implement call admission control in a centralized call processing deployment.
- D. Provide alternate call routing when the primary call path is unavailable.

**Correct Answer:** C

**Section:** (none)

**Explanation**

**Explanation/Reference:**

#### **QUESTION 45**

**Which statement regarding Cisco IP voice media streaming application is correct?**

- A. It should be activated on the gateway in cluster that supports the TFTP service.
- B. It should be activated on the gatekeeper in cluster that supports the TFTP service.
- C. It should be activated on the node in cluster that does not support the TFTP service.
- D. It should be activated on the node in cluster that supports the TFTP service.

**Correct Answer:** D

**Section:** (none)

**Explanation**

**Explanation/Reference:**

#### **QUESTION 46**

**What is the correct path selection for a call that is routed through a Cisco Unified Communications Manager system?**

- A. Devices -> Route Group -> Route List -> Route Pattern.
- B. Route List -> Route Pattern -> Route Group -> Devices.
- C. Route Pattern -> Route List -> Route Group -> Devices.
- D. Route Group -> Devices -> Route Pattern -> Route List.

**Correct Answer:** C

**Section:** (none)

**Explanation**

**Explanation/Reference:**

#### **QUESTION 47**

**Which configuration output indicates a properly configured T1 digital voice interface?**

- A. controller T1  
0/0/0 framing esf  
linecode b8zs  
pri-group timeslots 1-24  
!
- B. isdn switch-type primary-ni  
!  
controller T1 0/0/0  
framing esf  
linecode b8zs  
!
- C. isdn switch-type primary-ni  
!  
controller T1 0/0/0  
framing esf  
linecode b8zs  
pri-group timeslots 1-24  
isdn switch-type primary-ni  
!
- D. isdn switch-type primary-ni  
!  
controller T1 0/0/0  
framing esf  
linecode b8zs  
dial-peer voice 1 pots  
destination-pattern 54....  
direction-inward.dial  
port 0/0/0:23  
!

**Correct Answer:** C

**Section:** (none)

**Explanation**

**Explanation/Reference:**

#### QUESTION 48

You are a Voice Engineer at ABC Company. You want to implement a voice translation profile to perform the following manipulation: The incoming DNIS 9876562XXX should be modified to 2XXX. Which four commands are required to configure the translation profile? (Choose four.)

- A. voice translation-rule 1.
- B. rule 1 /^ 9876562/ /2/.
- C. voice translation-profile incoming-calls.
- D. translate called 1.
- E. rule 1 /^ 9876562\$/ /2/ type subscriber.
- F. translation-profile incoming incoming-calls.
- G. translate calling 1.
- H. translate called rule 1.

**Correct Answer:** ABCD

**Section:** (none)

**Explanation**

**Explanation/Reference:**

#### **QUESTION 49**

**On what equipment do you configure Layer 2 to Layer 3 QoS mapping?**

- A. Switch.
- B. Router.
- C. Firewall.
- D. Cisco Unified Communications Manager.
- E. Bridge.

**Correct Answer:** B

**Section:** (none)

**Explanation**

**Explanation/Reference:**

#### **QUESTION 50**

**Which mechanism is often configured on the edges of a network to control the maximum rate of traffic that is sent or received on an interface and to classify the traffic into priority levels or class of service?**

- A. Routing.
- B. Shaping.

- C. Policing.
- D. Access control.
- E. Traffic regulation.

**Correct Answer:** C

**Section:** (none)

**Explanation**

**Explanation/Reference:**

#### **QUESTION 51**

**Which three characteristics of a video stream require the implementation of QoS? (Choose three.)**

- A. Variable packet rate.
- B. Constant bandwidth.
- C. Small packets.
- D. High MTU.
- E. High packet rate.

**Correct Answer:** ADE

**Section:** (none)

**Explanation**

**Explanation/Reference:**

#### **QUESTION 52**

**Which two statements about Cisco VCS Addressing Zones are true? (Choose two.)**

- A. They can be local to the Cisco VCS or can be remote.
- B. A zone is a collection of endpoints that share the same dialing behavior and bandwidth settings.
- C. They consist of traversal and nontraversal zones.
- D. They can only be local.
- E. They consist of subzones such as DNS zones.

**Correct Answer:** AB

**Section:** (none)

**Explanation**

**Explanation/Reference:**

**QUESTION 53**

**Which four call coverage features are used by voice gateways? (Choose four.)**

- A. Call hunt.
- B. Call Park.
- C. Call Pickup.
- D. Call redirecting.
- E. Overlaid phone-dn.
- F. Basic automatic call distribution.
- G. Overlaid ephone-dn.
- H. Basic manual call distribution.

**Correct Answer:** ACFG

**Section:** (none)

**Explanation**

**Explanation/Reference:**

**QUESTION 54**

**Which three CLI commands allow you to verify the correct VoIP dial-peer matching? (Choose three.)**

- A. Debug ccsip messages.
- B. Debug voip ccapi inout.
- C. Debug dialpeer match.
- D. Debug voip dialpeer inout.
- E. Show dialplan number.

**Correct Answer:** BDE

**Section:** (none)

**Explanation**

**Explanation/Reference:**

**QUESTION 55**

**Which option describes how you add software conference bridges to Cisco Unified Communications Manager?**



- A. By adding a Cisco Unified CM server to the cluster.
- B. By adding a software conference bridge using Conference Bridge Configuration.
- C. By installing DSP to a Cisco Unified CM server.
- D. By reassigning other media resources to conference resources.

**Correct Answer:** A

**Section:** (none)

**Explanation**

**Explanation/Reference:**

#### **QUESTION 56**

**Which of these media resources can be configured in Cisco Unified Communication manager? (Choose Three)**

- A. MOH Server.
- B. Voice Termination Point DSP.
- C. Transcoder.
- D. Auto Attendant.
- E. Conference Bridge.

**Correct Answer:** ACE

**Section:** (none)

**Explanation**

**Explanation/Reference:**

#### **QUESTION 57**

**When comparing SIP H.323 and MGCP, which of the following is specific to SIP?**

- A. The dial plan is directly on the gateway.
- B. SIP provides support for third-party entities.
- C. SIP defines Translation per the gateway.
- D. SIP has a centralized dial plan.

**Correct Answer:** B

**Section:** (none)

**Explanation**

**Explanation/Reference:**

**QUESTION 58**

**Refer to Exhibit, If the user at extension 1001 dials the user at extension 2111, which dial peer is used to route the call?**

- A. 3
- B. 2
- C. 4
- D. 1

**Correct Answer: D**

**Section: (none)**

**Explanation**

**Explanation/Reference:**

**QUESTION 59**

**Refer to the exhibit. When users call number 00044156789453, they have to wait for several seconds before the call is sent. Which action sends the call immediately?**

- A. In the translation pattern, change the CSS.
- B. In the route pattern, check the Allow Device Override check box.
- C. In the route pattern, check the Urgent Priority check box.
- D. In the translation pattern, check the Route Next Hop By Calling Party Number check box.

**Correct Answer: C**

**Section: (none)**

**Explanation**

**Explanation/Reference:**

**QUESTION 60**

**Which two codecs are required for Cisco WebEx Enabled TelePresence? (Choose two.)**

- A. G.711 codec for audio.
- B. H.264 codec for video.

- C. G.729 codec for audio.
- D. G.711 or G.729 codec for audio.
- E. H.263 codec for video.
- F. H.264 or H.263 codec for video.

**Correct Answer:** AB

**Section:** (none)

**Explanation**

**Explanation/Reference:**

#### **QUESTION 61**

**Every VoIP endpoint must select one specific codec. Which of these codecs is the mandatory codec?**

- A. G.729.
- B. G.728.
- C. G.722.
- D. G.711.
- E. H.264.

**Correct Answer:** D

**Section:** (none)

**Explanation**

**Explanation/Reference:**

#### **QUESTION 62**

**Which three statements about the default VoIP dial peer are true? (Choose three.)**

- A. VAD is disabled.
- B. RSVP is not supported.
- C. Only the G.711 codec is supported.
- D. The G.729 and G.711 codecs are supported.
- E. Fax-rate service is supported.
- F. DTMF relay is supported.

**Correct Answer:** BDE

**Section: (none)**

**Explanation**

**Explanation/Reference:**

**QUESTION 63**

**Which two codecs are supported by the Cisco Unified Communications Manager software conferencing media resource? (Choose two.)**

- A. G.723.
- B. G.729.
- C. Wideband.
- D. GSM
- E. G.711

**Correct Answer: CE**

**Section: (none)**

**Explanation**

**Explanation/Reference:**

**QUESTION 64**

**Which two codecs are the best codecs to use in WAN and LAN? (Choose two.)**

- A. WAN codec G.711.
- B. LAN codec G.729.
- C. WAN codec G.729.
- D. LAN codec G.711.

**Correct Answer: CD**

**Section: (none)**

**Explanation**

**Explanation/Reference:**

**QUESTION 65**

**What is the relationship between a Region and a Location?**

- A. The Region codec parameter is used between a Region and its configured Locations.
- B. The Region setting for a Location sets the number of audio and video calls that Location can support.
- C. The codec parameter configured in the Region is only used between Regions and Location bandwidth is only used between Locations.
- D. The Region codec parameter is combined with Location bandwidth when communicating with other Regions.

**Correct Answer:** C

**Section:** (none)

**Explanation**

**Explanation/Reference:**

#### **QUESTION 66**

**Which three of these are characteristics of a Cisco Unified Communications Manager software- based Media Termination Point? (Choose three.)**

- A. The codec and packetization of both call legs must be identical.
- B. This Media Termination Point type does not require any DSP resources on the Cisco router.
- C. DSP resources are required.
- D. It can provide G.711 mu-law to G.711 a-law conversion and vice versa.
- E. It can provide packetization conversion for a given codec (for example, if one call leg is using a 20-ms sample size, but the other call leg is using a 30-ms sample size).
- F. This Media Termination Point type is typically used for RSVP agent configurations or Cisco Unified border element media flow-through configuration.

**Correct Answer:** BDE

**Section:** (none)

**Explanation**

**Explanation/Reference:**

#### **QUESTION 67**

**Which two configuration items are necessary to configure Cisco Unified Border Element for video? (Choose two.)**

- A. voice class codec
- B. voice translation-rule
- C. voice service voip
- D. dial-peer

**Correct Answer:** CD

**Section:** (none)

**Explanation**

**Explanation/Reference:**

**QUESTION 68**

**If you have configured translation rules, what command do you use to verify digit manipulation?**

- A. execute translation-rule
- B. show translation-rule
- C. test translation-rule
- D. debug translation-rule
- E. set translation-rule

**Correct Answer:** C

**Section:** (none)

**Explanation**

**Explanation/Reference:**

**If you have configured translation rules, use the test translation-rule command to verify digit manipulation. Page 136**  
[http://www.cisco.com/c/en/us/td/docs/ios/12\\_2/voice/configuration/guide/fvfax\\_c/vvfpers.pdf](http://www.cisco.com/c/en/us/td/docs/ios/12_2/voice/configuration/guide/fvfax_c/vvfpers.pdf)

**QUESTION 69**

**Which two options are IOS conference bridge types in CUCM? (Choose two)**

- A. Cisco IOS Enhanced Conference Bridge.
- B. Cisco IOS Standard Conference Bridge.
- C. Cisco IOS Software Conference Bridge.
- D. Cisco IOS Hardware Conference Bridge.
- E. Cisco IOS Conference Bridge.

**Correct Answer:** AE

**Section:** (none)

**Explanation**

**Explanation/Reference:**

Page 367

Cisco Unified Communications Manager Administration Guide, Release 10.0(1)

**QUESTION 70**

**Which distribution algorithm is used for a route group?**

- A. Circular, top down.
- B. Longest idle, broadcast.
- C. Circular, top down, longest idle, broadcast.
- D. Top down, broadcast, circular.

**Correct Answer: A**

**Section: (none)**

**Explanation**

**Explanation/Reference:**

Page 199

Cisco Unified Communications Manager Administration Guide, Release 10.0(1)

**QUESTION 71**

**A Cisco Unified Communications Manager group specifies a prioritized list of how many Cisco Unified Communications Managers?**

- A. 0
- B. 1
- C. 2
- D. 3
- E. 4
- F. 5
- G. 6
- H. 7

**Correct Answer: D**

**Section: (none)**

**Explanation**

**Explanation/Reference:**

Page 41

Cisco Unified Communications Manager Administration Guide, Release 10.0(1)

**QUESTION 72**

**Where do you configure a SIP route pattern?**

- A. Call Routing > SIP Route Pattern.
- B. Call Routing > Route/Hunt > SIP Route Pattern.
- C. System > SIP Route Pattern.
- D. Advanced Features > SIP Route Pattern.

**Correct Answer:** A

**Section:** (none)

**Explanation**

**Explanation/Reference:**

Page 253

Cisco Unified Communications Manager Administration Guide, Release 10.0(1)

#### **QUESTION 73**

**What are two characteristics of a Cisco Unified Communications Manager Enterprise parameter? (Choose two)**

- A. It is used to configure settings for specific services.
- B. It is used to define end-user authentication settings.
- C. It sets initial values for device-defaults.
- D. It is used to configure settings for different services.
- E. It is used to define clusterwide settings.

**Correct Answer:** CE

**Section:** (none)

**Explanation**

**Explanation/Reference:**

Page 147

Cisco Unified Communications Manager Administration Guide, Release 10.0(1)

#### **QUESTION 74**

**What are two characteristics that are associated with the End User and User account types? (Choose two)**

- A. They cannot use LDAP.
- B. They are used to authorize applications.
- C. They can utilize LDAP.
- D. The Application is associated with the End User and User account types.
- E. They can be listed in a directory.



**Correct Answer:** CE

**Section:** (none)

**Explanation**

**Explanation/Reference:**

Page 52

CIPTV110SG\_Vol1

#### **QUESTION 75**

**What are two characteristics of a Cisco Unified Communications Manager dial plan? (Choose two)**

- A. Partitions and calling search spaces.
- B. COR.
- C. Dial peers.
- D. Voice translation rules.
- E. Route patterns.

**Correct Answer:** AE

**Section:** (none)

**Explanation**

**Explanation/Reference:**

#### **QUESTION 76**

**What are two characteristics of a Cisco Unified Communications Manager Express dial plan? (Choose two)**

- A. Partitions and calling search spaces.
- B. COR.
- C. Dial peers.
- D. Voice translation patterns.
- E. Route patterns.

**Correct Answer:** BC

**Section:** (none)

**Explanation**

**Explanation/Reference:**

**QUESTION 77**

You are a Voice Engineer at ABC Company. You want to provision a new voice gateway for a remote site, and you need to configure 24 channels of a T1 CAS interface. Which set is the correct set of commands for this configuration?

- A. R1(config)# controller t1 1/0  
R1(config-controller)# framing esf  
R1(config-controller)# linecode b8zs  
R1(config-controller)# primary-group 1 timeslot 1-24 type fxo-loop-start
- B. R1(config)# controller t1 1/0  
R1(config-controller)# linecode hdb3  
R1(config-controller)# framing crc4  
R1(config-controller)# clock source line  
R1(config-controller)# ds0-group 1 timeslot 1-24 type fxo-loop-start
- C. R1(config)# isdn switch-type primary-5ess  
R1(config)# controller t1 t1/0  
R1(config-controller)# pri-group timeslots 1-24
- D. R1(config)# controller t1 1/0  
R1(config-controller)# framing esf  
R1(config-controller)# linecode b8zs  
R1(config-controller)# clock source line  
R1(config-controller)# ds0-group 1 timeslot 1-24 type fxo-loop-start

**Correct Answer:** D

**Section:** (none)

**Explanation**

**Explanation/Reference:**

Page 9-11 [http://www.cisco.com/c/en/us/td/docs/ios/voice/isdn/configuration/guide/12\\_4t/vi\\_12\\_4t\\_book/vi\\_imp\\_t1cas\\_voip.pdf](http://www.cisco.com/c/en/us/td/docs/ios/voice/isdn/configuration/guide/12_4t/vi_12_4t_book/vi_imp_t1cas_voip.pdf)

**QUESTION 78**

Which dial plan function is used to restrict calls that are made by a lobby phone to internal extensions only?

- A. Path selection.
- B. Endpoint addressing.
- C. Manipulation of dialed destination.
- D. Calling privileges.

**Correct Answer:** D

**Section:** (none)

**Explanation**

**Explanation/Reference:**

**QUESTION 79**

**Which type of dial plan implements destinations by using a format that is similar to email addresses?**

- A. H.323.
- B. E.164.
- C. DNS.
- D. URI.

**Correct Answer: D**

**Section: (none)**

**Explanation**

**Explanation/Reference:**

Cisco Unified Communications Manager Administration Guide, Release 10.0(1)

**QUESTION 80**

**Refer to the exhibit. Which party has a SIP B2BUA role in the call?**

- A. 172.17.4.100.
- B. 10.100.4.65 and 172.17.4.100.
- C. 10.100.4.65.
- D. None of the parties has a B2BUA role in the call..
- E. 10.100.4.68 and 10.100.4.65.

**Correct Answer: C**

**Section: (none)**

**Explanation**

**Explanation/Reference:**

Page 156 - 157  
CIPTV110SG\_Vol1

**QUESTION 81**

**When comparing SIP H.323 and MGCP, which of the following is specific to SIP?**

- A. The dial plan is directly on the gateway.
- B. SIP provides support for third-party entities.

- C. SIP defines Translation per the gateway.
- D. SIP has a centralized dial plan.

**Correct Answer:** B

**Section:** (none)

**Explanation**

**Explanation/Reference:**

Page 83

CIPTV110SG\_Vol1

#### **QUESTION 82**

**Every VoIP endpoint must select one specific codec. Which of these codecs is the mandatory codec?**

- A. G.729.
- B. G.728.
- C. G.722.
- D. G.711.
- E. H.264

**Correct Answer:** D

**Section:** (none)

**Explanation**

**Explanation/Reference:**

Page 164

CIPTV110SG\_Vol1

#### **QUESTION 83**

**What is the correct path selection for a call that is routed through a Cisco Unified Communications Manager system?**

- A. Devices -> Route Group -> Route List -> Route Pattern.
- B. Route List -> Route Pattern -> Route Group -> Devices.
- C. Route Pattern -> Route List -> Route Group -> Devices.
- D. Route Group -> Devices -> Route Pattern -> Route List.

**Correct Answer:** C

**Section:** (none)

**Explanation**

**Explanation/Reference:**

Page 187  
CIPTV110SG\_Vol1

**QUESTION 84**

**What is the difference between policing and shaping?**

- A. Policing: Transmit and mark, then transmit the packets. Shaping: Buffer the exceeding packets.
- B. Policing: Transmit the packets. Shaping: Buffer the exceeding packets.
- C. Policing: Transmit, drop or mark, then transmit the packets. Shaping: Buffer the exceeding packets.
- D. Policing: Buffer the exceeding packets. Shaping: Transmit and mark, then transmit the packets.

**Correct Answer: C**

**Section: (none)**

**Explanation**

**Explanation/Reference:**

<http://www.cisco.com/c/en/us/support/docs/quality-of-service-qos/qos-policing/19645-policevsshape.html>

**QUESTION 85**

**What are four features of Cisco Unified Border Element? (Choose four).**

- A. Protocol Interworking.
- B. Bandwidth Control.
- C. Admission Request.
- D. Automated Alternate Routing.
- E. Address Hiding.
- F. Security.
- G. Video Integration.

**Correct Answer: AFG**

**Section: (none)**

**Explanation**

**Explanation/Reference:**

Page 248  
CIPTV110SG\_Vol1

**QUESTION 86**

**Where do you configure the region for a group of devices?**

- A. Common device profile.
- B. Device defaults.
- C. Common device configuration.
- D. Common phone profile.
- E. Device pool.

**Correct Answer:** E

**Section:** (none)

**Explanation**

**Explanation/Reference:**

Page 73

Cisco Unified Communications Manager Administration Guide, Release 10.0(1)

#### **QUESTION 87**

**Which statement about a partition is true?**

- A. A partition is a logical group of transformation patterns with similar accessibility characteristics.
- B. A partition is a group of gateways with similar accessibility characteristics.
- C. A partition is a logical group of directory numbers with similar accessibility characteristics.
- D. A partition is a logical group of route patterns with similar accessibility characteristics.

**Correct Answer:** C

**Section:** (none)

**Explanation**

**Explanation/Reference:**

<http://www.cisco.com/c/en/us/support/docs/voice-unified-communications/unified-communications-manager-callmanager/13920-call-routing.html>

#### **QUESTION 88**

**In a multisite deployment, which two voice codecs are recommended to use between intrasite endpoints? (Choose two)**

- A. G.711.
- B. G.728.
- C. H.264.
- D. G.722.
- E. G.729.

**Correct Answer:** AD

**Section:** (none)

**Explanation**

**Explanation/Reference:**

Page 27

CIPTV110SG\_Vol1

**QUESTION 89**

**Which type of IOS Conference bridge requires all users to use the same video format in order to participate in a video conference?**

- A. Ad Hoc Conferencing.
- B. Homogenous Conferencing.
- C. Heterogenous Conferencing.
- D. Guaranteed Audio Video Conferencing.
- E. Meet-Me Conferencing.

**Correct Answer:** B

**Section:** (none)

**Explanation**

**Explanation/Reference:**

Page 365

CIPTV110SG\_Vol1

**QUESTION 90**

**Which two of the following DSPs can be used in heterogenous conferencing to achieve the required trans-sizing and transcoding functionality? (Choose two.)**

- A. PVDM3-256.
- B. PVDM2-256.
- C. PVDM-192.
- D. PVDM3-32.
- E. PVDM3-192.
- F. PVDM2-128.

**Correct Answer:** AE

**Section:** (none)

**Explanation**

**Explanation/Reference:**

Page 378  
CIPTV110SG\_Vol1

**QUESTION 91**

**Which of the following simplifies and enhances conference resource management?**

- A. Cisco Telepresence Server.
- B. Cisco Telepresence MCU.
- C. Cisco Telepresence MSE 8000.
- D. Cisco IOS routers with packet voice/data module (PVDM).
- E. Cisco Telepresence Conductor.

**Correct Answer: E**

**Section: (none)**

**Explanation**

**Explanation/Reference:**

Page 412  
CIPTV110SG\_Vol1

**QUESTION 92**

**What is the maximum number of 1080p30 HD Conference Participants if an MSE 8000 has four MSE8710 blades clustered?**

- A. 48.
- B. 180
- C. 720
- D. 800

**Correct Answer: A**

**Section: (none)**

**Explanation**

**Explanation/Reference:**

Page 389  
CIPTV110SG\_Vol1

**QUESTION 93**

**Which three types of devices can you test with the Cisco Unified Communications Manager Dialed Number Analyzer tool? (Choose three)**



- A. Fax/Modem.
- B. Trunks.
- C. Gateways.
- D. Cisco ASA Adaptive Security Appliances.
- E. Cisco Catalyst Switches.
- F. Phones.

**Correct Answer:** ACF

**Section:** (none)

**Explanation**

**Explanation/Reference:**

Page 435

CIPTV110SG\_Vol1

#### **QUESTION 94**

**Which two Cisco products allow the use of a dial plan with E.164, H.323, SIP, and DNS? (Choose two.)**

- A. Cisco Expressway.
- B. Cisco Unified Communications Manager.
- C. Cisco Unified Border Element.
- D. Cisco IM and Presence.
- E. Cisco TelePresence Video Communication Server.

**Correct Answer:** AE

**Section:** (none)

**Explanation**

**Explanation/Reference:**

[http://www.cisco.com/c/dam/en/us/td/docs/voice\\_ip\\_comm/expressway/config\\_guide/X8-1/Cisco-Expressway-Basic-Configuration-Deployment-Guide-X8-1.pdf](http://www.cisco.com/c/dam/en/us/td/docs/voice_ip_comm/expressway/config_guide/X8-1/Cisco-Expressway-Basic-Configuration-Deployment-Guide-X8-1.pdf)

[http://www.cisco.com/c/dam/en/us/td/docs/telepresence/infrastructure/vcs/admin\\_guide/Cisco-VCS-Administrator-Guide-X8-6.pdf](http://www.cisco.com/c/dam/en/us/td/docs/telepresence/infrastructure/vcs/admin_guide/Cisco-VCS-Administrator-Guide-X8-6.pdf)

#### **QUESTION 95**

**You are a Voice Engineer at ABC Company. You want to implement a voice translation profile to perform the following manipulation: The incoming DNIS 9876562XXX should be modified to 2XXX. Which four commands are required to configure the translation profile? (Choose four.)**

- A. voice translation-rule 1.
- B. rule 1 /^ 9876562/ /2/.

- C. voice translation-profile incoming-calls.
- D. translate called 1.
- E. rule 1 /^ 9876562\$/ /2/ type subscriber.
- F. translation-profile incoming incoming-calls.
- G. translate calling 1.
- H. translate called rule 1.

**Correct Answer:** ABCD

**Section:** (none)

**Explanation**

**Explanation/Reference:**

#### **QUESTION 96**

**What is a VoIP dial peer?**

- A. A nonaddressable call endpoint.
- B. A call routing mechanism to send and receive calls based on called or calling digits.
- C. A physical connection for call legs.
- D. A logical connection for call legs.

**Correct Answer:** B

**Section:** (none)

**Explanation**

**Explanation/Reference:**

#### **QUESTION 97**

**Which two options are applications that support service categories in Cisco Unified Communications Manager? (Choose two)**

- A. WAV.
- B. Java MIDlet.
- C. CSV.
- D. XML.

**Correct Answer:** BD

**Section:** (none)

### **Explanation**

#### **Explanation/Reference:**

Page 733

Cisco Unified Communications Manager Administration Guide, Release 10.0(1)

#### **QUESTION 98**

**By default, what value is voice traffic marked as on a Cisco Catalyst Switch?**

- A. DSCP EF value 46, Cos 5.
- B. DSCP EF value 46, Cos 7.
- C. DSCP CAS6 value 21, Cos 3.
- D. DSCP AF21, Cos 5.

**Correct Answer:** A

**Section:** (none)

### **Explanation**

#### **Explanation/Reference:**

#### **QUESTION 99**

**On Cisco Unified Communications Manager, where can you change the softkey templates from your IP phone?**

- A. Cisco Unified Communications Manager Serviceability > Device > Device Settings > Softkey Templates.
- B. Cisco Unified Communications Manager Administration > Device > Device Settings > Softkey Templates.
- C. Cisco Unified Communications Manager Administration > Device > Device Settings > Phone Button Template.
- D. Cisco Unified Communications Manager Administration > Device > Device Settings > Device Defaults.

**Correct Answer:** B

**Section:** (none)

### **Explanation**

#### **Explanation/Reference:**

Page 726, 731

Cisco Unified Communications Manager Administration Guide, Release 10.0(1)

#### **QUESTION 100**

**Which three Cisco Unified Communications Manager settings can be used to support IP phone services? (Choose three.)**

- A. Device Defaults.

- B. Enterprise Parameters.
- C. IP Phone Service Configuration window.
- D. Common Phone Profile.
- E. Service Parameters.
- F. Phone Configuration window.

**Correct Answer:** BDF

**Section:** (none)

**Explanation**

**Explanation/Reference:**

#### **QUESTION 101**

Refer to the exhibit. To reach an external number, a user first dials a 9. Which route pattern will be matched if a user dials an international number 011442288223001 and terminates the interdigit timeout?

9.1[2-9]XX[2-9]XXXXXX  
9.18[0,6-8][0,6-8]XXXXXX  
9.1900XXXXXX  
9011.!  
9011.!#

- A. 9.1[2-9]XX[2-9]XXXXXX.
- B. 9.18[0,6-8][0,6-8]XXXXXX.
- C. 9.1900XXXXXX.
- D. 9011.!
- E. 9011.!#.

**Correct Answer:** E

**Section:** (none)

**Explanation**

**Explanation/Reference:**

#### **QUESTION 102**

Which three elements are used to configure calling privileges? (Choose three)

- A. Route pattern.

- B. Calling search space.
- C. Replica.
- D. User.
- E. Partition
- F. Time schedule.

**Correct Answer:** BEF

**Section:** (none)

**Explanation**

**Explanation/Reference:**

#### **QUESTION 103**

**Route lists determine the order of preference for route group usage. If a route list is configured, what is the minimum number of route groups that you must configure?**

- A. 1
- B. 2
- C. 3
- D. 4
- E. 5
- F. 6
- G. 7
- H. 8

**Correct Answer:** A

**Section:** (none)

**Explanation**

**Explanation/Reference:**

Page 205

Cisco Unified Communications Manager Administration Guide, Release 10.0(1)

#### **QUESTION 104**

**Which two types of encoding are available to configure a T1 controller for CAS?**

- A. AME.
- B. ESF.

- C. SF.
- D. B8SF.
- E. B8ZS.
- F. AMI.

**Correct Answer:** EF

**Section:** (none)

**Explanation**

**Explanation/Reference:**

<http://www.cisco.com/c/en/us/support/docs/voice/digital-cas/24642-cas-config.html>

#### **QUESTION 105**

**What is the recommended default value that is used between regions for video calls?**

- A. 384 Kbps.
- B. G.722.
- C. G.711.
- D. G.728.

**Correct Answer:** A

**Section:** (none)

**Explanation**

**Explanation/Reference:**

[http://www.cisco.com/c/en/us/td/docs/voice\\_ip\\_comm/cucm/admin/7\\_1\\_2/ccmcfg/bccm-712-cm/b02regio.html](http://www.cisco.com/c/en/us/td/docs/voice_ip_comm/cucm/admin/7_1_2/ccmcfg/bccm-712-cm/b02regio.html)

#### **QUESTION 106**

**Which QoS model is bandwidth-dedicated to provide sufficient quality for applications that need high resolution, such as video terminals?**

- A. Best-Effort.
- B. IntServ.
- C. DiffServ.
- D. DiffServf.

**Correct Answer:** C

**Section:** (none)

**Explanation**

**Explanation/Reference:**

**QUESTION 107**

**Which statement about translation patterns and transformation patterns is true?**

- A. Both transformation patterns and translations patterns support only numeric values.
- B. Both transformation patterns and translations patterns support numeric and alphanumeric values.
- C. Transformation patterns support numeric and alphanumeric values, whereas translations patterns support only numeric values.
- D. Translation patterns support numeric and alphanumeric values, whereas transformation patterns support only numeric values.

**Correct Answer:** B

**Section:** (none)

**Explanation**

**Explanation/Reference:**

[http://www.cisco.com/c/en/us/td/docs/voice\\_ip\\_comm/cucm/admin/8\\_6\\_1/ccmcfg/bccm-861-cm/b03txpat.html](http://www.cisco.com/c/en/us/td/docs/voice_ip_comm/cucm/admin/8_6_1/ccmcfg/bccm-861-cm/b03txpat.html)

[http://www.cisco.com/c/en/us/td/docs/voice\\_ip\\_comm/cucm/admin/8\\_6\\_1/ccmcfg/bccm-861-cm/b03cldpt.html](http://www.cisco.com/c/en/us/td/docs/voice_ip_comm/cucm/admin/8_6_1/ccmcfg/bccm-861-cm/b03cldpt.html)

**QUESTION 108**

**Which three commands show the output of an active video call? (Choose three.)**

- A. show vrm active\_calls
- B. show call active video brief
- C. show voip rtp connections
- D. show voice call
- E. show voice call summary
- F. show video dsp

**Correct Answer:** BCE

**Section:** (none)

**Explanation**

**Explanation/Reference:**

**QUESTION 109**

**Which CUCM default global conference setting should be changed to ensure fraud prevention?**

- A. Advanced Ad Hoc Conference Enabled.
- B. Block OffNet to OnNet Transfer.

- C. MCU Conference Bridge Custom Layout Index.
- D. Drop Ad Hoc Conference.
- E. Enable Click-to-Conference for Third-Party Applications.

**Correct Answer:**

**Section: (none)**

**Explanation**

**Explanation/Reference:**

Page 381

CIPTV110SG\_Vol1

#### **QUESTION 110**

**Which three options are components of Media Resources Architecture? (Choose three)**

- A. Music on hold.
- B. Media Resource Manager.
- C. Media Resource Group.
- D. Route list.
- E. Route group
- F. Media Resource Group List.

**Correct Answer:** BCF

**Section: (none)**

**Explanation**

**Explanation/Reference:**

[http://www.cisco.com/c/en/us/td/docs/voice\\_ip\\_comm/cucm/srnd/8x/uc8x/media.html#wp1106500](http://www.cisco.com/c/en/us/td/docs/voice_ip_comm/cucm/srnd/8x/uc8x/media.html#wp1106500)

#### **QUESTION 111**

**Which three options are types of media resources in CUCM? (Choose three)**

- A. Music on hold.
- B. H.323 trunk.
- C. Media Termination Point.
- D. Meet-Me Conference.
- E. SIP trunk.
- F. Transcoder.



**Correct Answer:** ACF

**Section:** (none)

**Explanation**

**Explanation/Reference:**

Page 295

CIPTV110SG\_Vol1

**QUESTION 112**

**Which DSCP classification is defined in RFC 2474?**

- A. DSCP CS3.
- B. DSCP 0.
- C. DSCP AF11.
- D. DSCP CS6.
- E. DSCP EF.
- F. DSCP CS2.
- G. DSCP CS1.
- H. DSCP AF21.

**Correct Answer:** A

**Section:** (none)

**Explanation**

**Explanation/Reference:**

Page 24

CIPTV110SG\_Vol2

**QUESTION 113**

**Which three options are valid digit discard instructions?**

- A. PreAt.
- B. PreDot.
- C. Leading#.
- D. PostAt.
- E. Trailing#.
- F. PostDot.

**Correct Answer:** ABE

**Section: (none)**

**Explanation**

**Explanation/Reference:**

[http://www.cisco.com/c/en/us/td/docs/voice\\_ip\\_comm/cucm/idp/504\\_423/deploy/dpdg/dpDIPIIns.html](http://www.cisco.com/c/en/us/td/docs/voice_ip_comm/cucm/idp/504_423/deploy/dpdg/dpDIPIIns.html)

**QUESTION 114**

**The Cisco TelePresence Conductor will not handle conference requests if the administrator username/ password is configured as which of these options?**

- A. admin/TANDBERG.
- B. administrator/TANDBERG.
- C. tandberg/Cisco.
- D. admin/Cisco.
- E. cisco/Cisco.
- F. administrator/Cisco.
- G. cisco/TANDBERG.

**Correct Answer: A**

**Section: (none)**

**Explanation**

**Explanation/Reference:**

[http://www.cisco.com/c/dam/en/us/td/docs/telepresence/infrastructure/conductor/config\\_guide/TelePresence-Conductor-Unified-CM-Deployment-Guide-XC2-3.pdf](http://www.cisco.com/c/dam/en/us/td/docs/telepresence/infrastructure/conductor/config_guide/TelePresence-Conductor-Unified-CM-Deployment-Guide-XC2-3.pdf)

**QUESTION 115**

**Which four call coverage features are used by voice gateways? (Choose four)**

- A. Call hunt.
- B. Call Park.
- C. Call Pickup.
- D. Call redirecting.
- E. Overlaid phone-dn.
- F. Basic automatic call distribution.
- G. Overlaid ephone-dn.
- H. Basic manual call distribution.

**Correct Answer: ACFG**

**Section: (none)**

**Explanation**

**Explanation/Reference:**

[http://www.cisco.com/c/en/us/td/docs/voice\\_ip\\_comm/cucme/admin/configuration/guide/cmecm/cmecover.html#pgfld-1200258](http://www.cisco.com/c/en/us/td/docs/voice_ip_comm/cucme/admin/configuration/guide/cmecm/cmecover.html#pgfld-1200258)

**QUESTION 116**

**A customer recently installed a Cisco TelePresence MCU 5320. The customer wants a virtual meeting room that restricts participants from communicating before the customer joins the call. Which feature in the MCU enables this functionality?**

- A. Floor and chair control.
- B. Numeric ID.
- C. PIN codes.
- D. Owner.

**Correct Answer: A**

**Section: (none)**

**Explanation**

**Explanation/Reference:**

[http://www.cisco.com/c/dam/en/us/td/docs/telepresence/infrastructure/mcu/admin\\_guide/cisco\\_telepresence\\_mcu\\_5300\\_series\\_administration\\_guide\\_4-3\\_2-17.pdf](http://www.cisco.com/c/dam/en/us/td/docs/telepresence/infrastructure/mcu/admin_guide/cisco_telepresence_mcu_5300_series_administration_guide_4-3_2-17.pdf)

**QUESTION 117**

**Which two of these are required in order for Cisco Unified Communications Manager to support software conferencing? (Choose two.)**

- A. The Cisco IP Voice Media Streaming Application needs to be activated on the server running the conferencing service in the cluster.
- B. The service parameter for the Cisco IP Voice Media Streaming Application needs to have Run Flag set to True.
- C. The software conference bridge resource needs to be configured in Cisco Unified Communications Manager.
- D. The Cisco IP Voice Media Streaming Application needs to be activated for all servers in the cluster.
- E. Under the Cisco IP Voice Media Streaming Application parameters, the conference bridge needs to have Run Flag set to True.

**Correct Answer: AE**

**Section: (none)**

**Explanation**

**Explanation/Reference:**

Page 362

Cisco Unified Communications Manager Administration Guide, Release 10.0(1)

**QUESTION 118**

**When dialing 1234, which rule is matched first?**

- A. route pattern 1XXX.
- B. route pattern 12[123]X.
- C. translation pattern 12[123]X.
- D. translation pattern 1XXX.
- E. directory number 12345.

**Correct Answer: C**

**Section: (none)**

**Explanation**

**Explanation/Reference:**

<http://www.ciscopress.com/articles/article.asp?p=1745737&seqNum=3>

#### **QUESTION 119**

**When creating a route pattern, which two of these options should you avoid? (Choose two)**

- A. Lowercase characters, such as a, b, c
- B. Wildcards.
- C. Numbers.
- D. Uppercase characters, such as A, B, C.
- E. Spaces.
- F. Special characters and escape sequences, such as @ and \+.

**Correct Answer: AE**

**Section: (none)**

**Explanation**

**Explanation/Reference:**

[http://www.cisco.com/c/en/us/td/docs/voice\\_ip\\_comm/cucm/admin/8\\_6\\_1/ccmcfg/bccm-861-cm/b03rtpat.html](http://www.cisco.com/c/en/us/td/docs/voice_ip_comm/cucm/admin/8_6_1/ccmcfg/bccm-861-cm/b03rtpat.html)

#### **QUESTION 120**

**Refer to Exhibit, If the user at extension 1001 dials the user at extension 2002, which dial peer is used to route the call?**

- A. 3.
- B. 2.
- C. 4.
- D. 1.

**Correct Answer:** A

**Section:** (none)

**Explanation**

**Explanation/Reference:**

#### **QUESTION 121**

**What are two benefits of using the DiffServ QoS model? (Choose two)**

- A. It offers an absolute guarantee of service quality.
- B. It is highly scalable.
- C. RTCP is scalable.
- D. It provides many different levels of quality.
- E. RSVP is not scalable.

**Correct Answer:** BD

**Section:** (none)

**Explanation**

**Explanation/Reference:**

[http://www.cisco.com/en/US/products/ps6610/products\\_data\\_sheet09186a00800a3e30.html](http://www.cisco.com/en/US/products/ps6610/products_data_sheet09186a00800a3e30.html)

<https://books.google.co.za/books?id=eLa5crPXSOYC&pg=PA586&lpg=PA586&dq=diffserv+offers+an+absolute+guarantee+of+service+quality.&source=bl&ots=KfwszIXvix&sig=A0y-xl63yeauELo227wJb5OR7oE&hl=en&sa=X&ved=0CCcQ6AEwAmoVChMluNqolIKJyAIVRZseCh0m-QP1#v=onepage&q=diffserv%20offers%20an%20absolute%20guarantee%20of%20service%20quality.&f=false>

#### **QUESTION 122**

**Which two elements of a dial plan define the domains that are accessible and are assigned to an endpoint? (Choose two)**

- A. Partitions.
- B. Calling Search Spaces.
- C. Route patterns.
- D. Translation patterns.
- E. Call Admission Control.

**Correct Answer:** AB

**Section:** (none)

**Explanation**

**Explanation/Reference:**

**QUESTION 123**

**Which two options can a route pattern be assigned? (Choose two)**

- A. A gateway that is assigned to a route group.
- B. A route list with one or more route groups configured.
- C. A gateway that is not assigned to a route group.
- D. A route list with no route groups configured.

**Correct Answer:** BD

**Section:** (none)

**Explanation**

**Explanation/Reference:**

Page 187

CIPTV110SG\_Vol1

**QUESTION 124**

**What is the best tool to test end verify a dial plan during the implementing phase?**

- A. Translator X
- B. CUCM Dialed Number Analyzer.
- C. Real-Time Monitoring Tool.
- D. Cisco Prime Collaboration Tool.

**Correct Answer:** B

**Section:** (none)

**Explanation**

**Explanation/Reference:**

[http://www.cisco.com/c/en/us/td/docs/voice\\_ip\\_comm/cucm/dna/4\\_1\\_2/cdna412/dnai.html](http://www.cisco.com/c/en/us/td/docs/voice_ip_comm/cucm/dna/4_1_2/cdna412/dnai.html)

**QUESTION 125**

**When implementing a global dial plan, which digit manipulation feature in CUCM does Cisco recommend for adding +1 to all outbound calls?**

- A. Called party transformation.
- B. Calling party transformation.

- C. Translation pattern.
- D. External phone mask.

**Correct Answer:** A

**Section:** (none)

**Explanation**

**Explanation/Reference:**

#### **QUESTION 126**

**ABC SA de CV is a Company located in New York City and has 3 Branch Offices in Laredo, Bryan, and Houston Texas. The network Administrator has the requirement to configure that all international calls goes out first for Houston Texas, if the GW of Houston goes down then the international call goes out for Bryan Texas and if GW of Bryan goes down, the international call will go out of Laredo Texas. What does the Administrator have to configure to achieve this requirement?**

- A. Configure a Route Pattern selecting all possible gateways.
- B. Configure a Line Group for international calls selecting the first option GW of Houston, then Bryan and finally Laredo. After this he has to configure a Hunt List for international calls selecting the Line Group for international calls and finally create the Hunt Pilot for International calls selecting the Hunt List created for international calls.
- C. Configure a New Partition and New CSS for international calls.
- D. Configure a Route Group for international calls selecting the first option GW of Houston, then Bryan and finally Laredo. After this he has to configure a Route List for international calls selecting the Route Group for international calls and finally create the Route Pattern for International calls selecting the Route List created for international calls.

**Correct Answer:** D

**Section:** (none)

**Explanation**

**Explanation/Reference:**

Page 187

CIPTV110SG\_Vol1

#### **QUESTION 127**

**After you configure a dial plan to call a particular prefix in the PSTN, you notice that some outbound calls are taking longer than usual (15 seconds) before you hear a connecting tone. What is the likely cause of this issue?**

- A. The outbound gateway must be configured with the new prefix.
- B. The endpoint is choosing the best codec to use.
- C. The new prefix is overlapping other route patterns.

D. With some prefixes, this is normal behavior of the PSTN.

**Correct Answer:** C

**Section:** (none)

**Explanation**

**Explanation/Reference:**

Page 107

CIPTV110SG\_Vol1

#### **QUESTION 128**

**Which three configuration options are currently unsupported when configuring the Cisco Unified Border Element for videoconferencing? (Choose three)**

- A. RSVP synchronization of H.323 calls.
- B. Multiple logical channels per call leg.
- C. H.323-to-SIP video traffic.
- D. FECC support.
- E. Video endpoints with different H.245 versions.
- F. Dual video/picture-in-picture.
- G. DSCP marking for video streams.

**Correct Answer:** CEF

**Section:** (none)

**Explanation**

**Explanation/Reference:**

[http://www.cisco.com/c/en/us/td/docs/ios/voice/cube/configuration/guide/15\\_2/vb\\_gw\\_15\\_2\\_book/vb-gw-video.pdf](http://www.cisco.com/c/en/us/td/docs/ios/voice/cube/configuration/guide/15_2/vb_gw_15_2_book/vb-gw-video.pdf)

#### **QUESTION 129**

**Which three CLI commands allow you to verify the correct VoIP dial-peer matching? (Choose three.)**

- A. Debug ccsip messages.
- B. Debug voip ccapi inout.
- C. Debug dialpeer match.
- D. Debug voip dialpeer inout.
- E. Show dialplan number.

**Correct Answer:** BDE

**Section:** (none)



**Explanation****Explanation/Reference:**

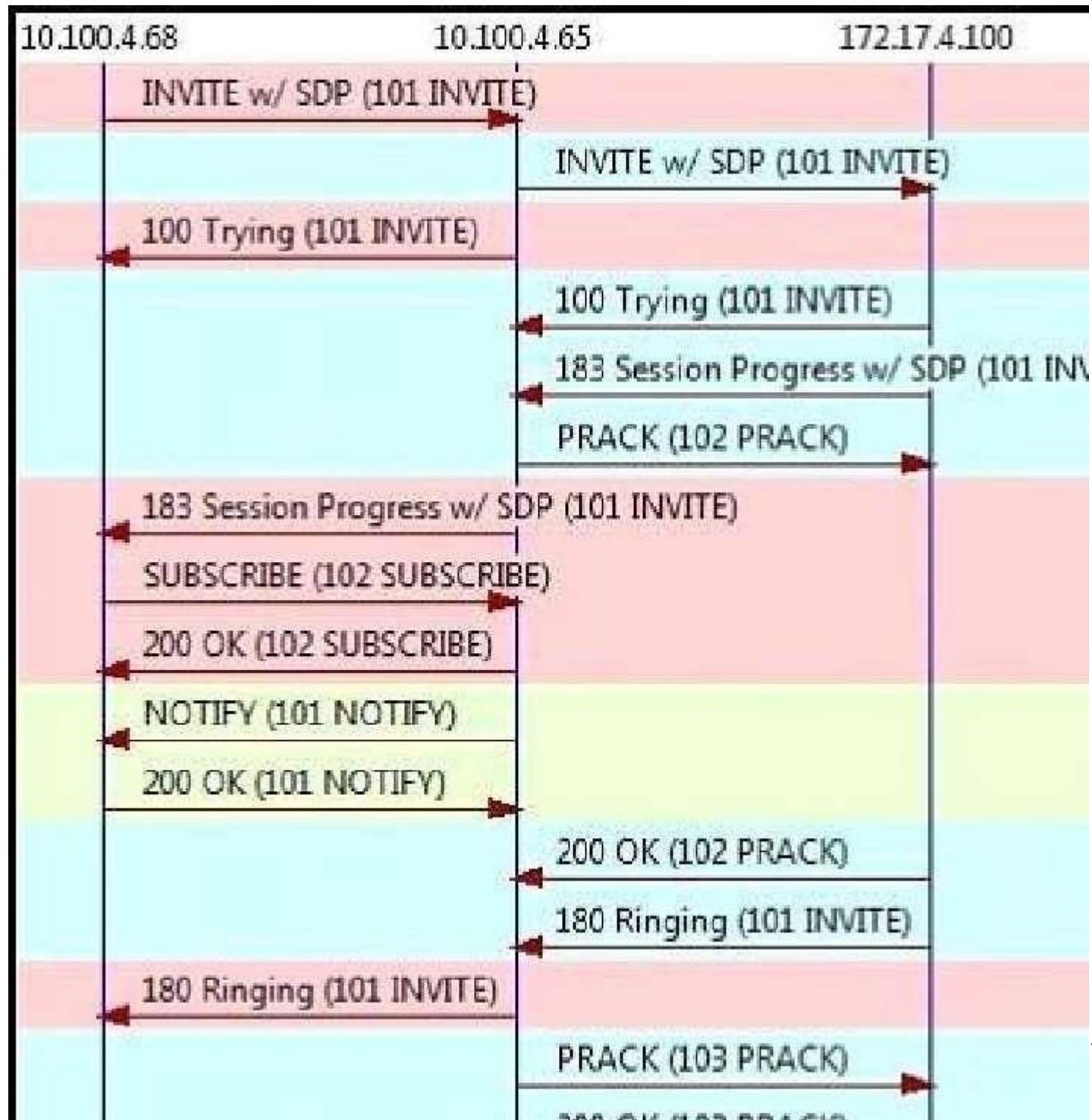
Explanation/Reference: <http://www.cisco.com/c/en/us/support/docs/voice/h323/14081-voip-debugcalls.html>

**Exhibits**

**QUESTION 1**

Refer to the exhibit. Which party has a SIP B2BUA role in the call?

**Exhibit:**



- A. 172.17.4.100.
- B. 10.100.4.65 and 172.17.4.100.
- C. 10.100.4.65.
- D. None of the parties has a B2BUA role in the call..
- E. 10.100.4.68 and 10.100.4.65.

**Correct Answer:** C

**Section:** (none)

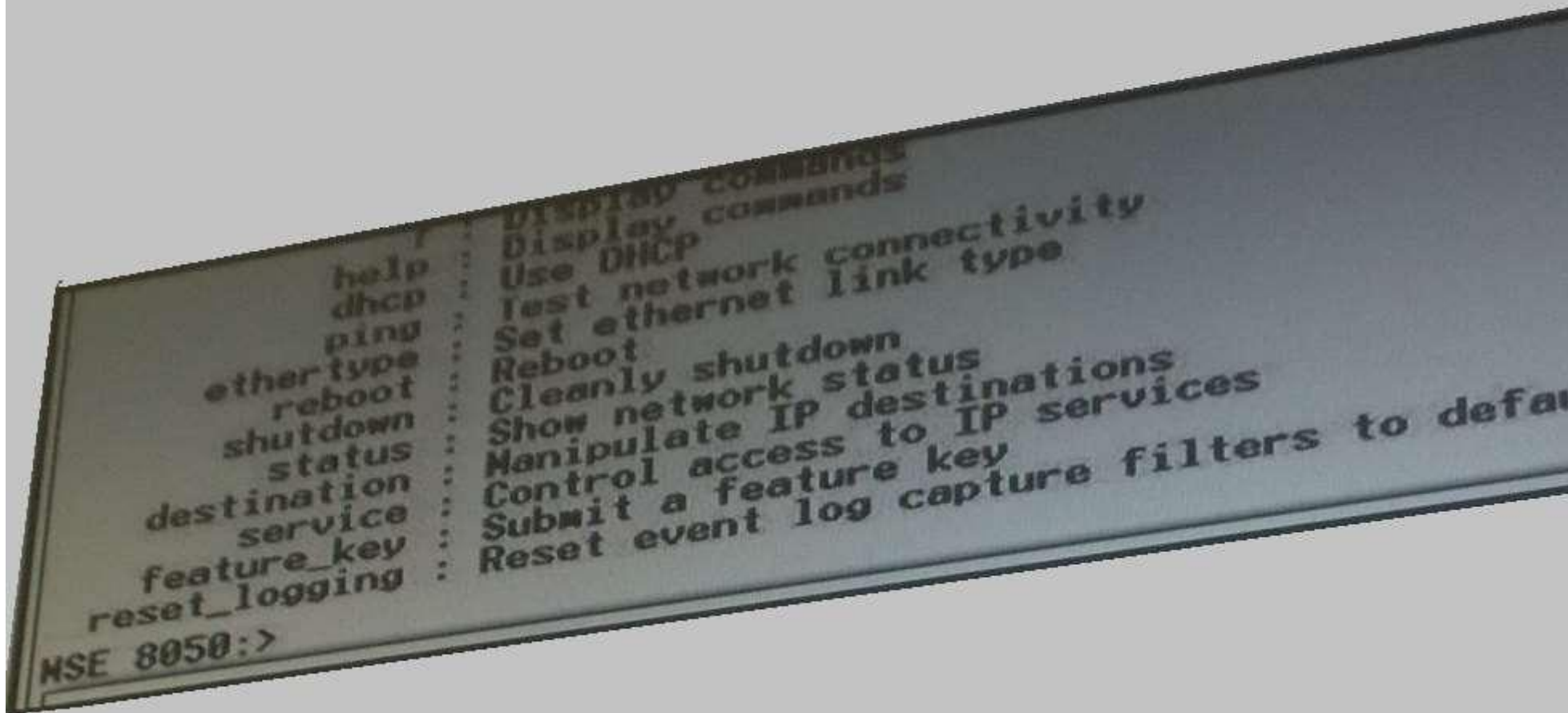
**Explanation**

**Explanation/Reference:**

## **QUESTION 2**

**Refer to the exhibit. What is the command to place the static IP address by CLI in the Cisco TelePresence MSE 8000?**

**Exhibit:**



- A. MSE 8050: static 0 10.10.2.13 255.255.255.255 10.10.2.1 200.87.100.10 200.87.100.20.
- B. MSE 8050: static 0 10.10.2.13 255.255.255.0 10.10.2.1 200.87.100.10 200.87.100.20.
- C. MSE 8050: static 1 10.10.2.13 255.255.255.0 10.10.2.1 200.87.100.10 200.87.100.20.
- D. MSE 8050: static ip 0 10.10.2.13 255.255.255.0 10.10.2.1 200.87.100.10 200.87.100.20.

**Correct Answer: B**

**Section: (none)**

**Explanation**

**Explanation/Reference:**

**QUESTION 3**

**Refer to Exhibit, If the user at extension 1001 dials the user at extension 2111, which dial peer is used to route the call?**

**Exhibit:**



```
dial-peer voice 1 pots
 destination-pattern .T
 port 1/1/0
dial-peer voice 2 pots
 destination-pattern 20[0-1].
 forward-digits all
 port 1/1/0
dial-peer voice 3 pots
 destination-pattern 200.
 forward-digits all
 port 1/1/0
dial-peer voice 4 pots
 destination-pattern 2001
 forward-digits all
 port 1/1/0
```

- A. 3.
- B. 2.
- C. 4.
- D. 1.

**Correct Answer:** D

**Section:** (none)

**Explanation**

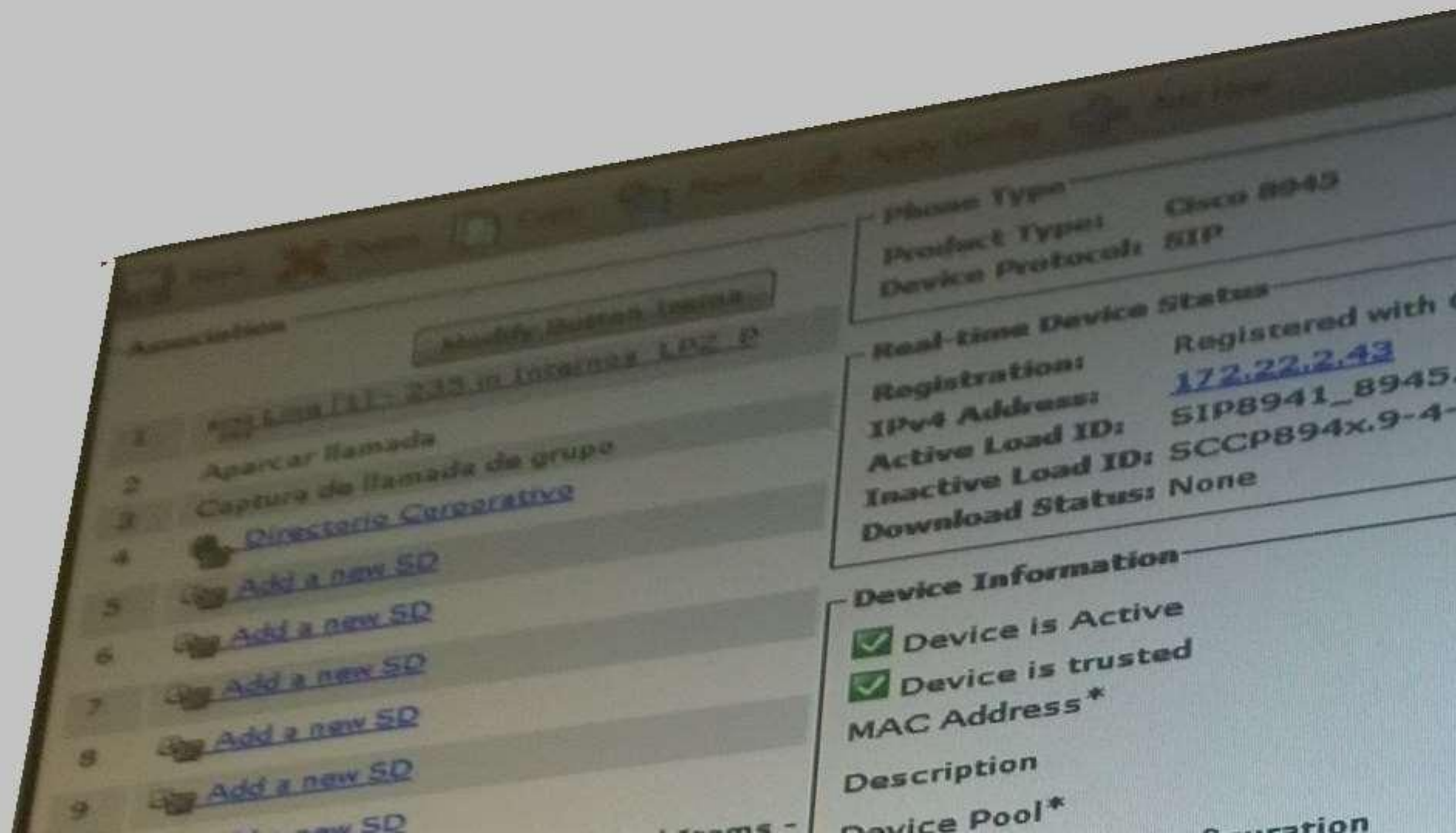
**Explanation/Reference:**

#### **QUESTION 4**

**Refer to the exhibit. Which calling search space has the highest priority?**

**Exhibit:**





- A. Phone Configuration > Calling Search Space: CSS\_Internos.
- B. Phone Configuration > Calling Search Space: CSS\_Locales.
- C. Directory Number Configuration > Calling Search Space: CSS\_Locales.
- D. Directory Number Configuration > Calling Search Space: CSS\_Internos.

**Correct Answer:** C

**Section:** (none)

**Explanation**

**Explanation/Reference:**

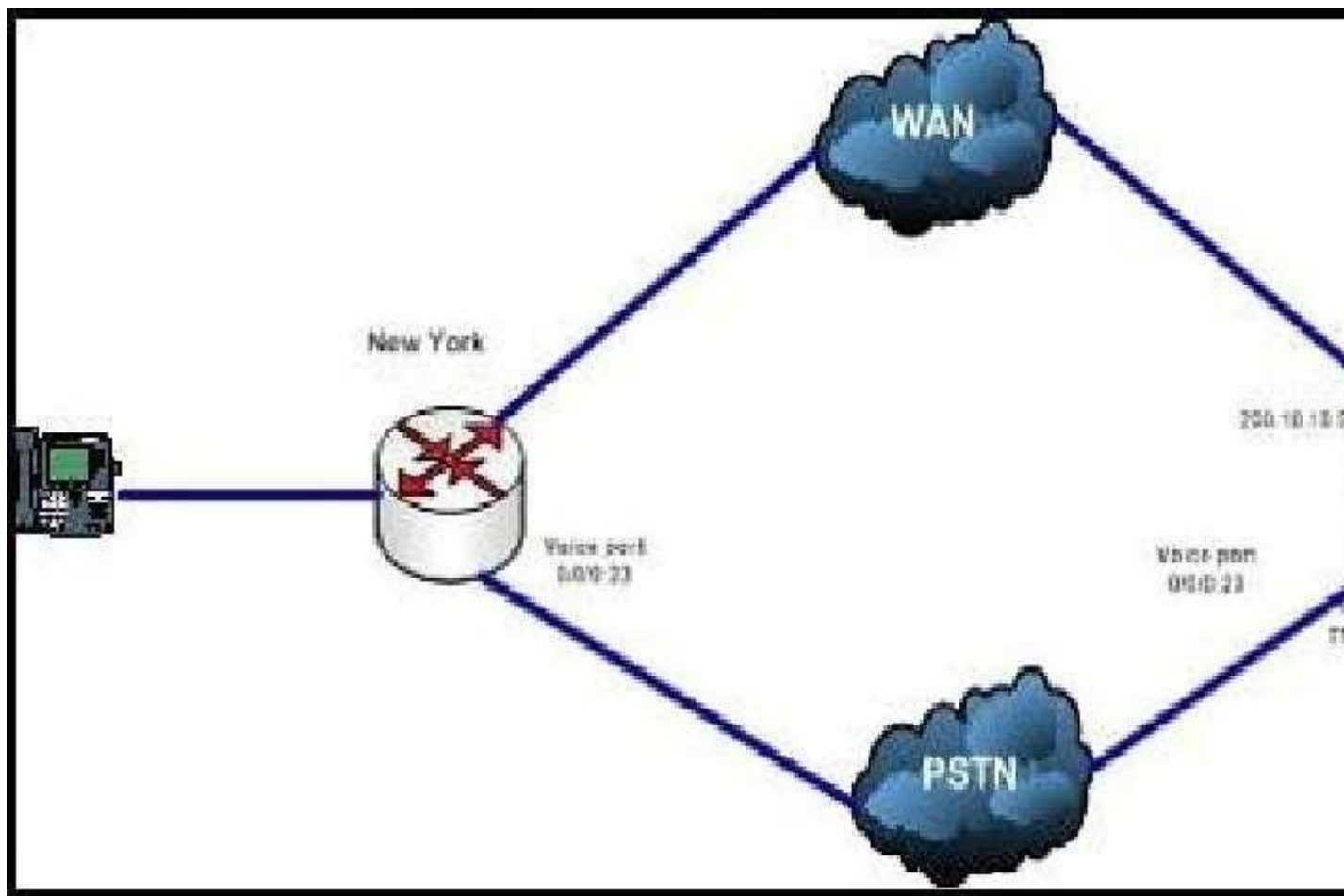
#### **QUESTION 5**

Refer to the exhibit and configuration output. What are the two main ways from New York to call Extension 6001 in England? (Choose two.)

```
sh run | s Dial-peer
dial-peer voice 2 voip
destination-pattern 6...
preference 0
session-target ipv4: 200.10.10.5
dtmf-relay sip-notify
```

```
dial-peer voice 3 pots
destination-pattern 6...
preference 1
port 0/0/0:23
prefix 757385
dtmf-relay sip-notify
```

**Exhibit:**



- A. The first way is WAN.
- B. The first way is PSTN.
- C. The second way is WAN.
- D. The second way is PSTN.

**Correct Answer:** AD

**Section:** (none)

**Explanation**

**Explanation/Reference:**

**QUESTION 6**

Refer to Exhibit, If the user at extension 1001 dials the user at extension 2011, which dial peer is used to route the call?

**Exhibit:**



```
dial-peer voice 1 pots
 destination-pattern .T
 port 1/1/0
dial-peer voice 2 pots
 destination-pattern 20[0-1].
 forward-digits all
 port 1/1/0
dial-peer voice 3 pots
 destination-pattern 200.
 forward-digits all
 port 1/1/0
dial-peer voice 4 pots
 destination-pattern 2001
 forward-digits all
 port 1/1/0
```

- A. 3.
- B. 2
- C. 4.
- D. 1

**Correct Answer:** B

**Section:** (none)

**Explanation**

**Explanation/Reference:**

#### **QUESTION 7**

Refer to the exhibit. A Network Administrator needs to create a SIP route pattern to communicate with Monterrey's Gateway.

The Administrator does not understand why this is not working properly. Which two statements explain the issue and resolve the problem?  
(Choose two)

113 (exhibit):

**Comment**

**Cisco Unified CM Administration**  
For Cisco Unified Communications Solutions

System ▾ Call Routing ▾ Media Resources ▾ Advanced Features ▾

**SIP Route Pattern Configuration**

Save Delete Copy Add New

**Status**  
 Add successful

**Pattern Definition**

Pattern Usage	Enrutamiento de dirección IP
IPv4 Pattern *	10.200.6.3
IPv6 Pattern	
Description	Monterrey
Route Partition	Interna
SIP Trunk/Route List *	RL-Monterrey
<input type="checkbox"/> Block Pattern	

**Calling Party Transformations**

☐ Use Calling Party's External Phone Mask

Calling Party Transformation Mask

Prefix Digits (Outgoing Calls)

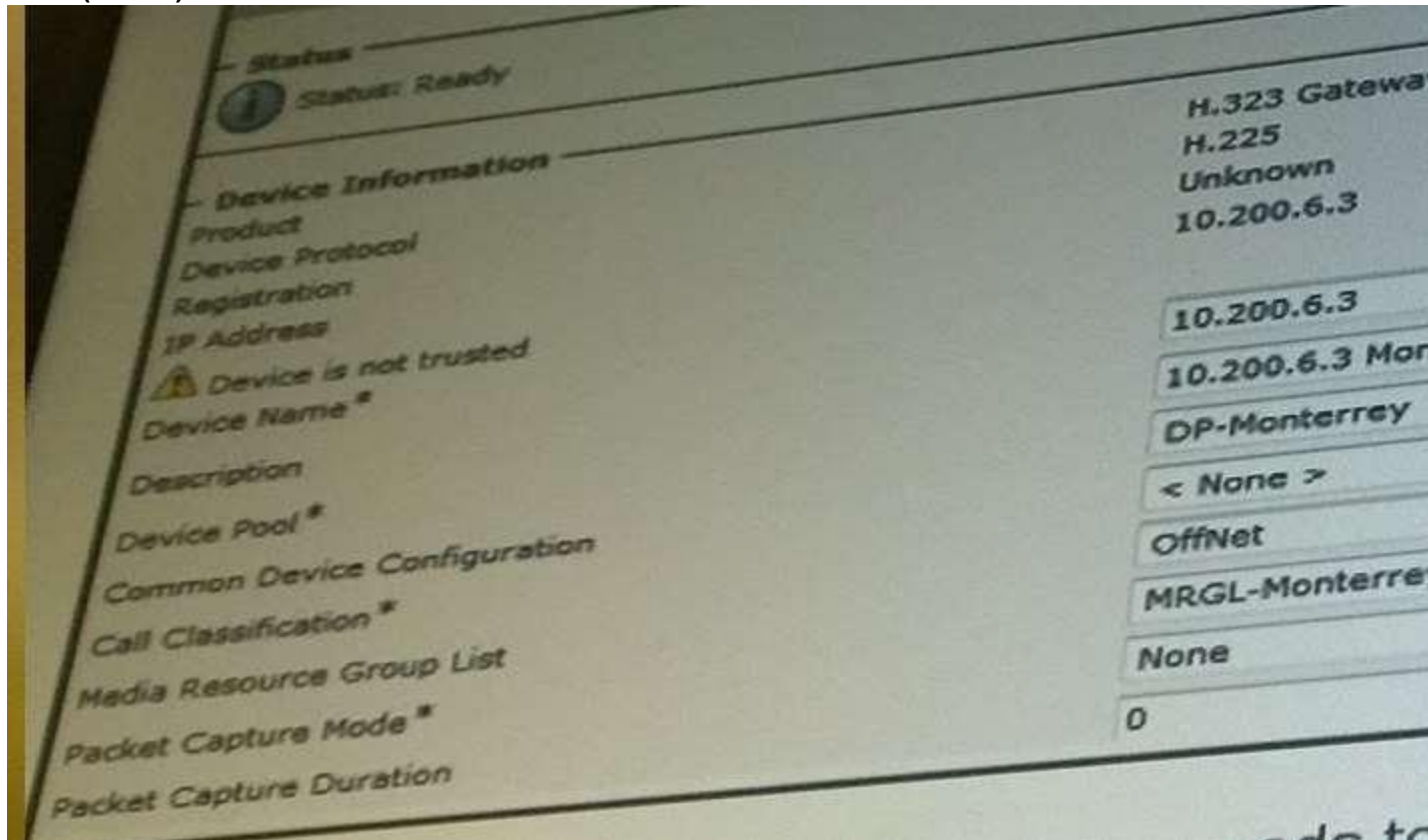
Calling Line ID Presentation \* Default

**Cisco Unified CM Administration**  
For Cisco Unified Communications Solutions

System ▾ Call Routing ▾ Media Resources ▾ Advanced Features ▾ Dev



113-1 (exhibit):



- A. The issue is caused by a failure of communication between the Monterrey's Gateway and CUCM.
- B. The Administrator should type the reload command into Monterrey's Gateway.
- C. The issue is caused by incorrect protocol integration between Monterrey's Gateway and CUCM.
- D. The Administrator needs to set up a SIP trunk between Monterrey's Gateway and CUCM.

**Correct Answer:** CD

**Section:** (none)

**Explanation**

**Explanation/Reference:**



**QUESTION 8**

Refer to Exhibit. If the user at extension 1001 dials the user at extension 2001, which dial peer is used to route the call?

Exhibit:



```
dial-peer voice 1 pots
 destination-pattern .T
 port 1/1/0
dial-peer voice 2 pots
 destination-pattern 20[0-1].
 forward-digits all
 port 1/1/0
dial-peer voice 3 pots
 destination-pattern 200.
 forward-digits all
 port 1/1/0
dial-peer voice 4 pots
 destination-pattern 2001
 forward-digits all
 port 1/1/0
```

- A. 3.
- B. 2.
- C. 4.
- D. 1.

**Correct Answer:** C

**Section:** (none)

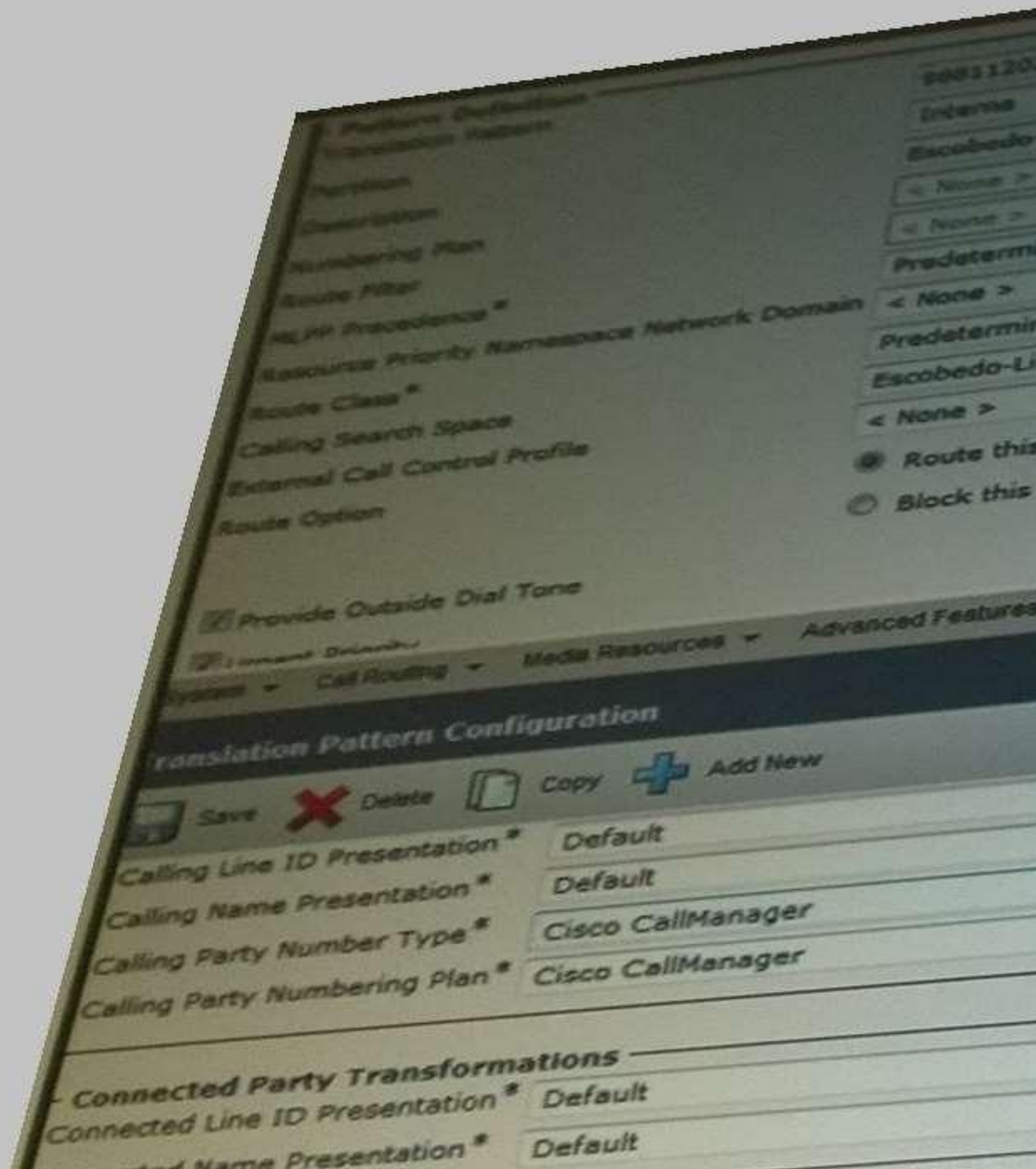
**Explanation**

**Explanation/Reference:**

#### **QUESTION 9**

Refer to the exhibit. ABC Company uses the digit 9 to get a dial tone and type a DN. A user needs to type 8811202 and automatically send the call to a cellphone. The Network Administrator did this configuration, but it is not working. Which two actions can the Administrator take to solve this problem? (Choose two)

**Exhibit:**



- A. In the Translation Pattern option, delete the digit "8".
- B. In the Translation Pattern option, delete the digit "9".
- C. In the Route Option option, select Block this Pattern.
- D. In the Called Party Transform Mask option, prefix the digit "9".

**Correct Answer:** BD

**Section:** (none)

**Explanation**

**Explanation/Reference:**

#### **QUESTION 10**

**Refer to the exhibit. When a user dials 919005551212, the call fails. Which change do you need to make for this call to be successful?**

**Exhibit:**

## Route Pattern Configuration



Save

### Status



Status: Ready

### Pattern Definition

Route Pattern\*

9.1900XXXXXXX

Route Partition

HQ\_LD

Description

Numbering Plan

-- Not Selected --

Route Filter

< None >

MLPP Precedence\*

Default

Resource Priority Namespace Network Domain

< None >

Route Class\*

Default

Gateway/Route List\*

LRG\_RL

Route Option

☐ Route this pattern

- A. Change the route partition.
- B. Change the gateway or route list.
- C. Change the route pattern to the correct number of digits.
- D. Change the call classification to OnNet.
- E. Change the route option.

**Correct Answer:** E

**Section:** (none)

**Explanation**

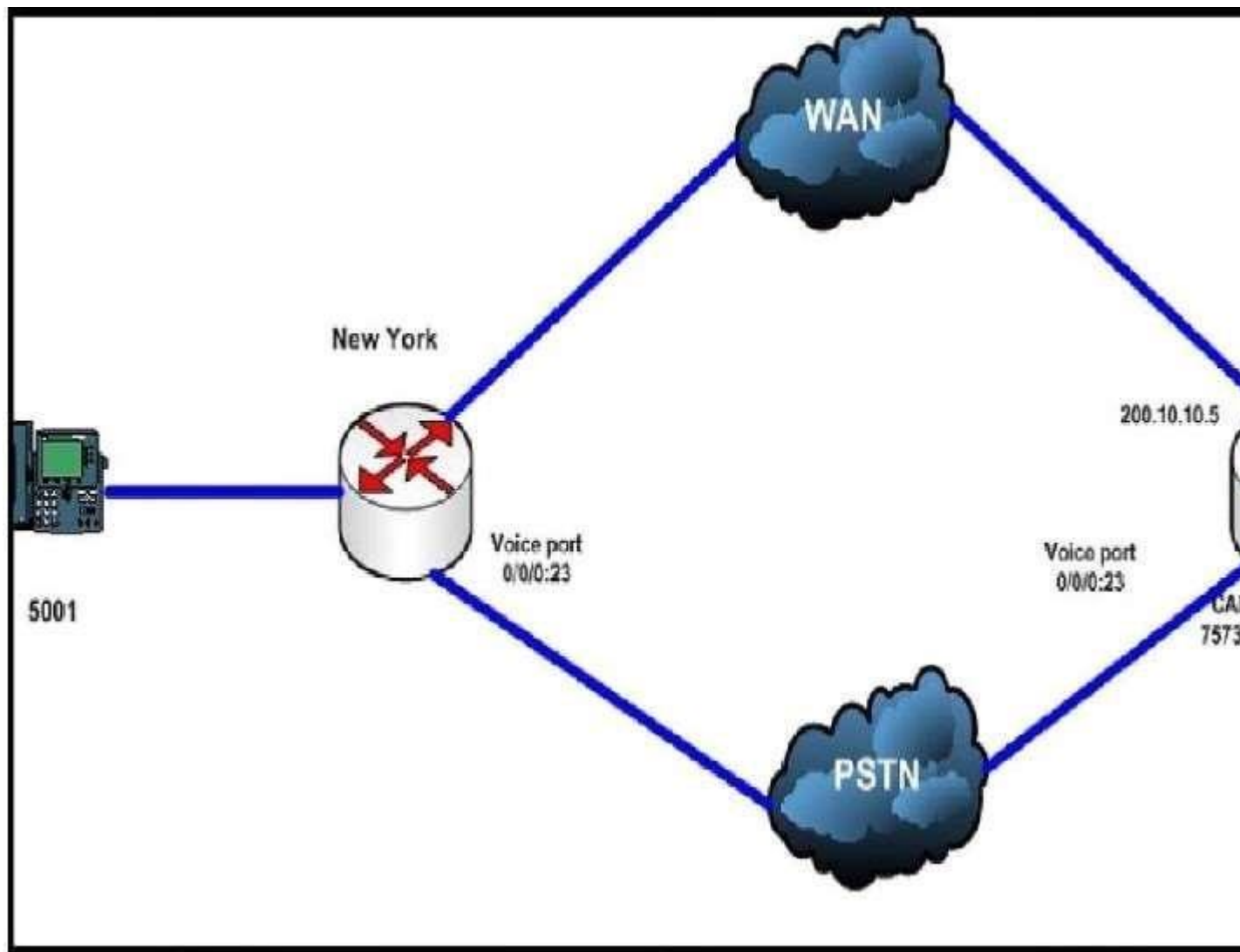
**Explanation/Reference:**

#### **QUESTION 11**

Refer to the exhibit and configuration output. A user in New York (5001) is trying to call a user in London (6001), but the call cannot be completed. Assuming that the WAN uplink is failing and the voice traffic has to go out toward the PSTN, which command do you need to add to dial peer to solve this issue?

dial-peer voice 3 pots  
destination-pattern 6...  
preference 1 port 0/0/0:23  
dtmf -relay sip-notify

**Exhibit:**



- A. num-exp 512602 6001
- B. prefix 757385
- C. forward-digits 2
- D. forward-digits 4
- E. prefix 5126



**Correct Answer:** B

**Section:** (none)

**Explanation**

**Explanation/Reference:**

**QUESTION 12**

Refer to the exhibit and configuration output. What are the two main ways from New York to call Extension 6001 in England? (Choose two.)

sh run | s Dial-peer

dial-peer voice 2 voip

destination-pattern 6...

preference 0

session-target ipv4: 200.10.10.5

dtmf-relay sip-notify dial-peer voice 3 pots

destination-pattern 6...

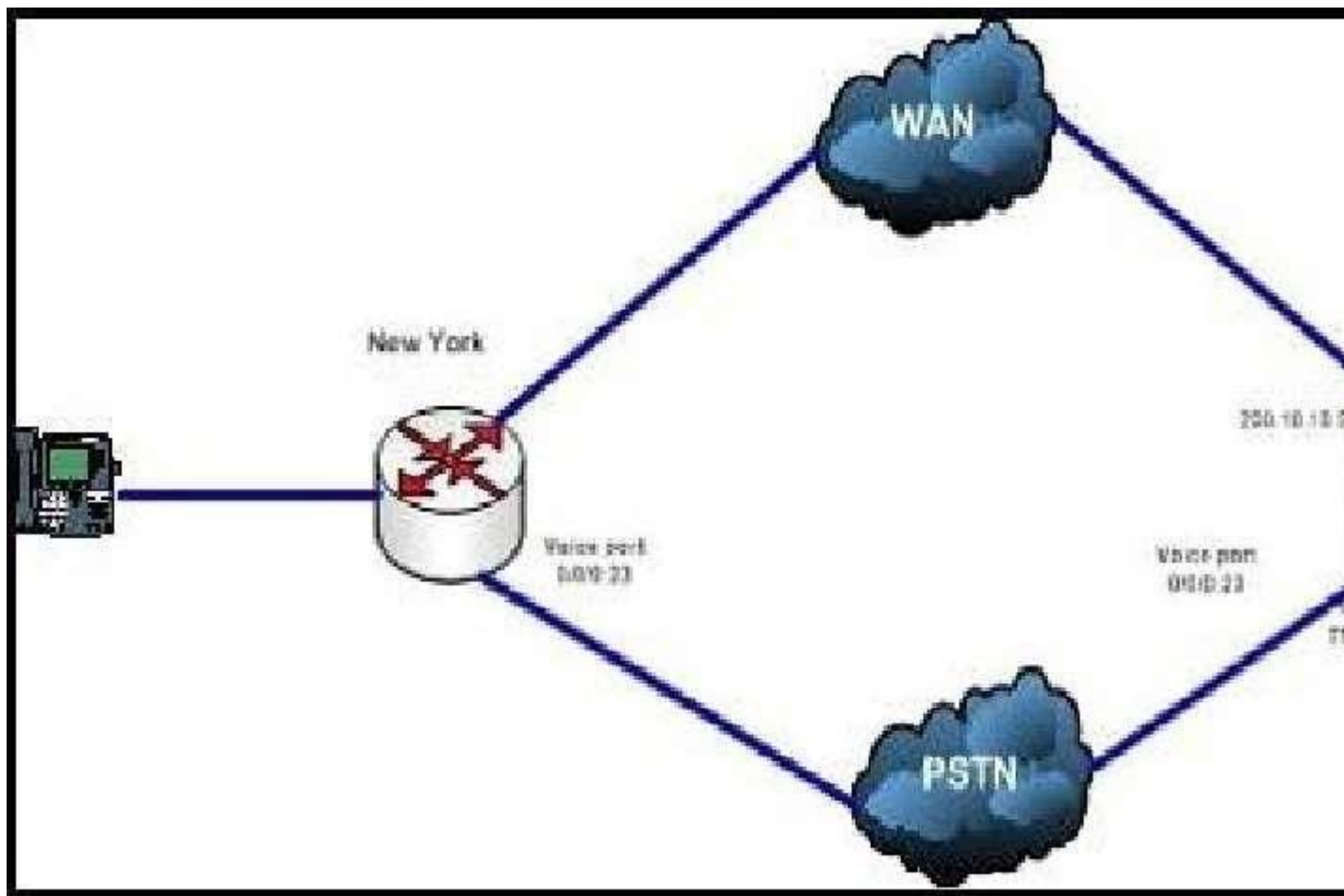
preference 1

port 0/0/0:23

prefix 757385

dtmf-relay sip-notify

**Exhibit:**



- A. The first way is WAN.
- B. The first way is PSTN.
- C. The second way is WAN.
- D. The second way is PSTN.

**Correct Answer:** AD

**Section:** (none)

**Explanation**

**Explanation/Reference:**

**QUESTION 13**

**Refer to the exhibit. To reach an external number, a user first dials a 9. Which route pattern will be matched if a user dials the toll-free number 18005550123?**

**Exhibit:**

911

9.[2-9]XXXXXX

9.1[2-9]XX[2-9]XXXXXX

9.18[0,6-8][0,6-8]XXXXXXX

9.1900XXXXXX

9011.!

- A. 911.
- B. 9.[2-9]XXXXXX.
- C. 9.1[2-9]XX[2-9]XXXXXX.
- D. 9.18[0,6-8][0,6-8]XXXXXX.
- E. 9.1900XXXXXX.
- F. 9011!.

**Correct Answer:** D

**Section:** (none)

**Explanation**

**Explanation/Reference:**

#### **QUESTION 14**

**Refer to the exhibit. To reach an external number, a user first dials a 9. Which route pattern will be matched if a user dials the toll-free number 18005550123?**

**Exhibit:**

911

9.911

9.[2-9]XXXXXX

9.1[2-9]XX[2-9]XXXXXX

9.1800XXXXXX

9.1866XXXXXX

9.1877XXXXXX

9.1888XXXXXX

9.1888XXXXXX

- A. 911.
- B. 9.[2-9]XXXXXX.
- C. 9.1[2-9]XX[2-9]XXXXXX.
- D. 9.1800XXXXXXX.
- E. 9.1866XXXXXXX.
- F. 9.1877XXXXXXX.
- G. 9.1888XXXXXXX.
- H. 9.1900XXXXXXX.
- I. 9011!.

**Correct Answer:** D

**Section:** (none)

**Explanation**

**Explanation/Reference:**

#### **QUESTION 15**

**Refer to Exhibit, If the user at extension 1001 dials the user at extension 2011, which dial peer is used to route the call?**

**Exhibit:**



```
dial-peer voice 1 pots
 destination-pattern .T
 port 1/1/0
dial-peer voice 2 pots
 destination-pattern 20[0-1].
 forward-digits all
 port 1/1/0
dial-peer voice 3 pots
 destination-pattern 200.
 forward-digits all
 port 1/1/0
dial-peer voice 4 pots
 destination-pattern 2001
 forward-digits all
 port 1/1/0
```



- A. 3
- B. 2
- C. 4
- D. 1

**Correct Answer:** B

**Section:** (none)

**Explanation**

**Explanation/Reference:**

**QUESTION 16**

Refer to Exhibit. If the user at extension 1001 dials the user at extension 2001, which dial peer is used to route the call?

**Exhibit:**



```
dial-peer voice 1 pots
 destination-pattern .T
 port 1/1/0
dial-peer voice 2 pots
 destination-pattern 20[0-1].
 forward-digits all
 port 1/1/0
dial-peer voice 3 pots
 destination-pattern 200.
 forward-digits all
 port 1/1/0
dial-peer voice 4 pots
 destination-pattern 2001
 forward-digits all
 port 1/1/0
```

- A. 3
- B. 2
- C. 4
- D. 1

**Correct Answer:** C

**Section:** (none)

**Explanation**

**Explanation/Reference:**

**QUESTION 17**

Refer to Exhibit, If the user at extension 1001 dials the user at extension 2002, which dial peer is used to route the call?

**Exhibit:**



```
dial-peer voice 1 pots
 destination-pattern .T
 port 1/1/0
dial-peer voice 2 pots
 destination-pattern 20[0-1].
 forward-digits all
 port 1/1/0
dial-peer voice 3 pots
 destination-pattern 200.
 forward-digits all
 port 1/1/0
dial-peer voice 4 pots
 destination-pattern 2001
 forward-digits all
 port 1/1/0
```

- A. 3
- B. 2
- C. 1
- D. 4

**Correct Answer:**

**Section: (none)**

**Explanation**

**Explanation/Reference:**

**QUESTION 18**

Refer to the exhibit. A Cisco Unified Communications Manager group is configured with the subscriber (10.1.5.3) listed first and the publisher (10.1.5.2) listed second. Which Cisco Unified Communications Manager is used for incoming calls through an MGCP gateway?

**Exhibit:**

```
!  
ccm-manager redundant-host 10.1.5.3  
ccm-manager mgcp  
ccm-manager fax protocol cisco  
ccm-manager config  
!  
mgcp  
mgcp call-agent 10.1.5.2 2427 service-type mgcp  
version 0.1  
no mgcp package-capability res-package  
no mgcp timer receive-rtcp  
mgcp fax t38 ecm  
!  
mgcp profile default  
!
```

A. The publisher.

- B. Both the publisher and subscriber in a round-robin format.
- C. The first server listed in the Cisco Unified Communications Manager group list.
- D. The subscriber.

**Correct Answer:** A

**Section:** (none)

**Explanation**

**Explanation/Reference:**