

**Untitled Exam**

Number: 000-000  
Passing Score: 800  
Time Limit: 120 min  
File Version: 1.0



**Exam A****QUESTION 1**

Managers have asked to be able to have an extension call them back if it is busy when they try to call it. In what two places can this feature be assigned to the Managers phone? (Choose two.)

- A. Device Settings > Softkey Template
- B. Device Settings > Default Device Profile Configuration
- C. Device Settings > Phone Button Template
- D. Device Settings > Device Profile
- E. Device Settings > Device Defaults
- F. Device Settings > Firmware Load Information

**Correct Answer:** AC

**Section:** (none)

**Explanation**

**Explanation/Reference:**

**QUESTION 2**

What are two characteristics of a Cisco Unified Communications Manager dial plan? (Choose two.)

- A. partitions and calling search spaces
- B. COR
- C. dial peer
- D. voice translation rules
- E. route patterns

**Correct Answer:** AE

**Section:** (none)

**Explanation**

**Explanation/Reference:**

**QUESTION 3**

What are the characteristics of a Cisco Unified Communications Manager group?

- A. Each call-processing server can be assigned to a single Cisco Unified Communications Manager group

- B. A Cisco Unified Communications Manager group is a prioritized list of (one or more) call-processing and application servers
- C. Each device has to have a Cisco Unified Communications Manager group assigned, which will determine the primary and backup servers to which it can register
- D. A single Cisco Unified Communications Manager group can exist in a single cluster

**Correct Answer:** C

**Section:** (none)

**Explanation**

**Explanation/Reference:**

#### **QUESTION 4**

Which three commands show the output of an active video call? (Choose three.)

- A. show vrm active calls
- B. show call active video brief
- C. show voip rtp connections
- D. show voice call
- E. show voice call summary
- F. show video dsp

**Correct Answer:** BCE

**Section:** (none)

**Explanation**

**Explanation/Reference:**

#### **QUESTION 5**

Which party has a SIP B2BUA role in the call?



- A. 172.17.4.100
- B. 10.100.4.65 and 172.17.4.100
- C. 10.100.4.65
- D. None of the parties has a B2BUA role in the call

E. 10.100.4.68 and 10.100.4.65

**Correct Answer:** C

**Section:** (none)

**Explanation**

**Explanation/Reference:**

#### **QUESTION 6**

How do you configure calling privileges on Cisco Unified Communications Manager Express?

- A. corlist
- B. translation profile
- C. zones
- D. access list
- E. search rules

**Correct Answer:** A

**Section:** (none)

**Explanation**

**Explanation/Reference:**

#### **QUESTION 7**

A customer recently installed a Cisco TelePresence MCU 5320. The customer wants a virtual meeting room that restricts participants from communicating before the customer joins the call. Which feature in the MCU enables this functionality?

- A. numeric ID
- B. floor and chair control
- C. owner
- D. PIN codes

**Correct Answer:** A

**Section:** (none)

**Explanation**

**Explanation/Reference:**

**QUESTION 8**

An organization with a centralized dial plan has user extensions as the last four digits of the external DID number. Some users at the head office have overlapping extensions with the users at the branch offices. Which action fixes this issue without changing user extensions and allowing users to call each other across sites?

- A. Use site codes
- B. Use different CSSs for both sites
- C. Place both extensions in different partitions
- D. Change the number of digits in the internal extensions

**Correct Answer:** A

**Section:** (none)

**Explanation**

**Explanation/Reference:**

**QUESTION 9**

Which three options can be used to configure digit manipulation for dial peers? (Choose three.)

- A. digit translation rules
- B. called party transformations
- C. route partitions
- D. forward digits
- E. route patterns
- F. digit stripping and prefixes
- G. calling party transformations

**Correct Answer:** ADF

**Section:** (none)

**Explanation**

**Explanation/Reference:**

**QUESTION 10**

Which two options can a route pattern be assigned? (Choose two.)

- A. a gateway that is not assigned to a route group

- B. a gateway that is assigned to a route group
- C. a route list with no route groups configured
- D. a route list with one or more route groups configured
- E. one more choice

**Correct Answer:** AD

**Section:** (none)

**Explanation**

**Explanation/Reference:**

#### **QUESTION 11**

Which three devices are analyzed by the Cisco Unified Communications Dialed Number Analyzer? (Choose three.)

- A. gatekeeper
- B. remote destination
- C. CTI route point
- D. trunk
- E. phone
- F. gateway

**Correct Answer:** CEF

**Section:** (none)

**Explanation**

**Explanation/Reference:**

#### **QUESTION 12**

Which mechanism is often configured on the edges of a network to control the maximum rate of traffic that is sent or received on an interface and to classify the traffic into priority levels or class of service?

- A. routing
- B. shaping
- C. policing
- D. access control
- E. traffic regulation

**Correct Answer:** C

**Section:** (none)

**Explanation**

**Explanation/Reference:**

**QUESTION 13**

Which two codecs are supported by the Cisco Unified Communications Manager software conferencing media resource? (Choose two.)

- A. G.723
- B. G.729
- C. Wideband
- D. GSM
- E. G.711

**Correct Answer:** CE

**Section:** (none)

**Explanation**

**Explanation/Reference:**

**QUESTION 14**

What is the correct path selection for a call that is routed through a Cisco Unified Communications Manager system?

- A. Devices -> Route Group -> Route List -> Route Pattern
- B. Route List -> Route Pattern -> Route Group -> Devices
- C. Route Pattern -> Route List -> Route Group -> Devices
- D. Route Group -> Devices -> Route Pattern -> Route List

**Correct Answer:** C

**Section:** (none)

**Explanation**

**Explanation/Reference:**

**QUESTION 15**

Which two statements about Cisco VCS Addressing Zones are true? (Choose two.)

- A. They can be local to the Cisco VCS or can be remote
- B. A zone is a collection of endpoints that share the same dialing behavior and bandwidth settings
- C. They consist of traversal and nontraversal zones
- D. They can only be local
- E. They consist of subzones such as DNS zones

**Correct Answer:** AB

**Section:** (none)

**Explanation**

**Explanation/Reference:**

#### **QUESTION 16**

Hackers are sending calls through a gateway router that is running SIP. The engineer blocks all SIP messages to the router except from their SIP server, which has an IP address of 208.177.10.1. The customer also must connect via SIP to their Cisco Expressway server with an IP address of 10.1.10.110. Which series of commands secures the router from the hackers?

- A. voice service voip  
voip security allow  
ipv4 208.177.10.1 255.255.255.255  
ipv4 10.1.10.110 255.255.255.255
- B. voice service voip  
ip address trusted list  
ipv4 208.177.10.1 255.255.255.255  
ipv4 10.1.10.110 255.255.255.255
- C. voice service voip  
allow-connections sip to sip  
ipv4 208.177.10.1 255.255.255.255  
ipv4 10.1.10.110 255.255.255.255
- D. voice service voip  
address-hiding  
ipv4 208.177.10.1 255.255.255.255  
ipv4 10.1.10.110 255.255.255.255

**Correct Answer:** B

**Section:** (none)

**Explanation**

**Explanation/Reference:**

**QUESTION 17**

If the user at extension 1001 dials the user at extension 2001, which dial peer is used to route the call?



```
dial-peer voice 1 pots
 destination-pattern .T
 port 1/1/0
dial-peer voice 2 pots
 destination-pattern 20[0-1].
 forward-digits all
 port 1/1/0
dial-peer voice 3 pots
 destination-pattern 200
```

- A. 3
- B. 2
- C. 4
- D. 1

**Correct Answer:** C

**Section:** (none)

**Explanation**

**Explanation/Reference:**

#### **QUESTION 18**

Which statement about traffic policing and shaping is true?

- A. Shaping limits traffic rates by dropping, re-marking, or transmitting traffic
- B. Policing involves regulating excessive traffic rates by delaying (that is, buffering) traffic
- C. Traffic policing and shaping help regulate bandwidth usage by limiting the amount of traffic
- D. Traffic policing is more suitable for lower-speed links such as Multilink PPP and Frame Relay, as it buffers excess traffic

**Correct Answer:** C

**Section:** (none)

**Explanation**

**Explanation/Reference:**

#### **QUESTION 19**

If the user at extension 1001 dials the user at extension 2002, which dial peer is used to route the call?



```
dial-peer voice 1 pots
  destination-pattern .T
  port 1/1/0
dial-peer voice 2 pots
  destination-pattern 20[0-1].
  forward-digits all
  port 1/1/0
dial-peer voice 3 pots
  destination-pattern 200
```

- A. 3
- B. 2
- C. 4
- D. 1

**Correct Answer:** A

**Section:** (none)

**Explanation**

**Explanation/Reference:**

#### **QUESTION 20**

Callers inform you that they hear a second dial tone after dialing the number 4085550123. Which dial-peer configuration command resolves this issue?

- A. answer-address 408555....
- B. destination-pattern 91[2-9]..[2-9].....
- C. forward digits all
- D. direct-inward dial

**Correct Answer:** D

**Section:** (none)

**Explanation**

**Explanation/Reference:**

#### **QUESTION 21**

When the Cisco IOS router or gateway receives a call setup request, what is the PID value of the default dial peer?

- A. PID:3
- B. PID:6
- C. PID:0
- D. PID:4
- E. PID:5
- F. PID:1
- G. PID:2
- H. PID:7

**Correct Answer:** C

**Section:** (none)

**Explanation**

**Explanation/Reference:**

#### **QUESTION 22**

You are a Network Engineer at ABC Company. You want to ensure that when the contact center agent for the company makes an external call, the extension 897 654 300 is displayed. How do you resolve this issue?

- A. Configure a Line Text Label on the Directory Number configuration page
- B. Configure an external phone number mask on the Directory Number configuration page
- C. Configure a translation pattern with the pattern 897654300
- D. Configure an external phone number mask on the Device configuration page

**Correct Answer:** B

**Section:** (none)

**Explanation**

**Explanation/Reference:**

#### **QUESTION 23**

When a call is attempted during a particular time of day, what determines the partitions where calling devices search?

- A. time schedules
- B. calling periods
- C. dial schedules
- D. time periods

**Correct Answer:** A

**Section:** (none)

**Explanation**

**Explanation/Reference:**

#### **QUESTION 24**

A phone is assigned to a partition that is included in the CSS HQ-Phone. This partition contains a route pattern to block calls to service numbers 1-400-

xxx-xxxx. When the engineer makes a test call to the number 1-400400-9000 from that phone, the call goes through. What is the reason for this issue?

- A. The route pattern for the number to be blocked is in partition not accessible to the CSS
- B. The correct route list is not selected in the route pattern for the dialed number to be blocked
- C. The correct gateway is not selected for the route list for the route pattern for the dialed number to be blocked
- D. The route pattern for the number to be blocked is in "NULL" partition
- E. The route pattern is misconfigured

**Correct Answer:** A

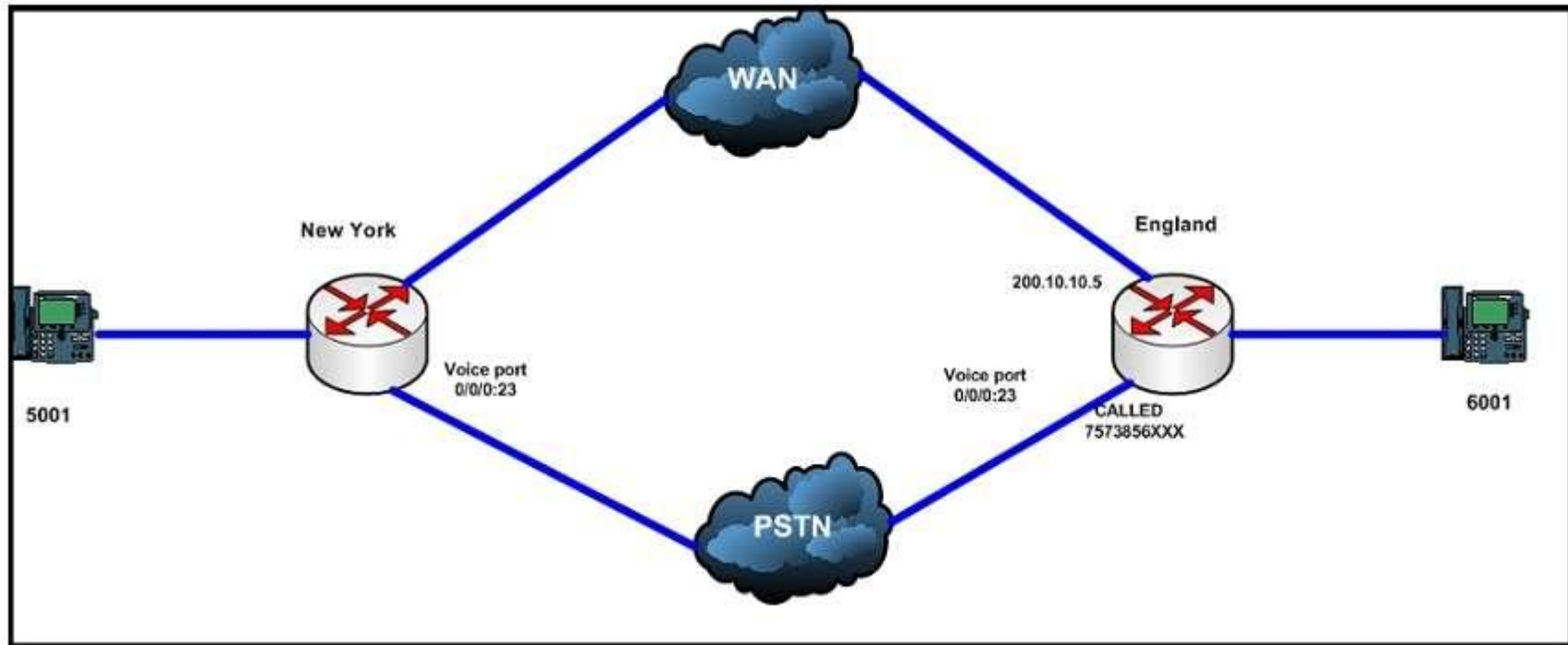
**Section:** (none)

**Explanation**

**Explanation/Reference:**

**QUESTION 25**

Refer to the exhibit and configuration output.



```
sh run | s Dial-peer
dial-peer voice 2 voip
destination-pattern 6...
preference 0
session-target ipv4: 200.10.10.5
dtmf-relay sip-notify
```

```
dial-peer voice 3 pots
destination-pattern 6...
preference 1
port 0/0/0:23
prefix 757385
dtmf-relay sip-notify
```

What are the two main ways from New York to call Extension 6001 in England? (Choose two.)

- A. The first way is WAN
- B. The first way is PSTN
- C. The second way is WAN
- D. The second way is PSTN

**Correct Answer:** AD

**Section:** (none)

**Explanation**

**Explanation/Reference:**

**QUESTION 26**

Refer to the exhibit

```
dial-peer voice 204 pots
description LLAMADA_CELULA
destination-pattern 9[67].
port 0/1/0
forward-digits 7
```

What is the problem when 237 dials 972551915?

- A. The problem is in "forward-digits 7"; the dial peer should be with "forward-digits 9."
- B. The problem is in "forward-digits 7"; the dial peer should be with "forward-digits 5."
- C. The problem is in "forward-digits 7"; the dial peer should be with "forward-digits 2. "
- D. The problem is in "forward-digits 7"; the dial peer should be with "forward-digits 8."

**Correct Answer:** A

**Section:** (none)

**Explanation**

**Explanation/Reference:**

**QUESTION 27**

The CSS on a line includes the partitions 911, internal and local. The CSS on the device includes the partitions 911, internal, local and long distance. Which CSS will be used if the phone user dials a local number?

- A. The device CSS will be used since the device CSS is always used first on an IP phone
- B. Since the dialed digits are a match to a partition in both Calling Search Spaces the call will use both matched partitions in both Calling Search Spaces in a round-robin format.
- C. If there is both a line and device CSS the line device will only be used
- D. The line and device CSSs will be combined and the device CSS will take precedence
- E. The line and device CSSs will be combined and the line CSS will take precedence

**Correct Answer:** E

**Section:** (none)

**Explanation**

**Explanation/Reference:**

**QUESTION 28**

Which two of these are required in order for Cisco Unified Communications Manager to support software conferencing? (Choose two.)

- A. The Cisco IP Voice Media Streaming Application needs to be activated on the server running the conferencing service in the cluster.
- B. The service parameter for the Cisco IP Voice Media Streaming Application needs to have Run Flag set to True
- C. The software conference bridge resource needs to be configured in Cisco Unified Communications Manager
- D. The Cisco IP Voice Media Streaming Application needs to be activated for all servers in the cluster
- E. Under the Cisco IP Voice Media Streaming Application parameters, the conference bridge needs to have Run Flag set to True

**Correct Answer:** AB

**Section:** (none)

**Explanation**

**Explanation/Reference:**

**QUESTION 29**

Which three are functions of Cisco Unified Border Element? (Choose three.)

- A. client registration
- B. H.323 and SIP interworking
- C. Lync interworking

- D. transcoding
- E. phone proxy
- F. mobile and remote access

**Correct Answer:** BDE

**Section:** (none)

**Explanation**

**Explanation/Reference:**

### QUESTION 30

Which configuration output indicates a properly configured T1 digital voice interface?

- A. controller T1 0/0/0  
framing esf  
linecode b8zs  
pri-group timeslots 1-24  
!
- B. isdn switch-type primary-ni  
!  
controller T1 0/0/0  
framing esf  
linecode b8zs  
!
- C. isdn switch-type primary-ni  
!  
controller T1 0/0/0  
framing esf  
linecode b8zs  
pri-group timeslots 1-24  
isdn switch-type primary-ni  
!
- D. isdn switch-type primary-ni  
!  
controller T1 0/0/0  
framing esf  
linecode b8zs  
!  
dial-peer voice 1 pots  
destination-pattern 54....  
direct in-inward dial

port 0/0/0:23

**Correct Answer:** C

**Section:** (none)

**Explanation**

**Explanation/Reference:**

### QUESTION 31

Which of the following simplifies and enhances conference resource management?

- A. Cisco TelePresence Server
- B. Cisco TelePresence MCU
- C. Cisco TelePresence MSE 8000
- D. Cisco IOS routers with packet voice/data module (PVDM)
- E. Cisco TelePresence Conductor

**Correct Answer:** E

**Section:** (none)

**Explanation**

**Explanation/Reference:**

### QUESTION 32

You are performing route pattern configuration. You need to ensure that internal extensions are automatically expanded to full external phone numbers for calling line information on outgoing calls. What should you use?

- A. calling extension expansion
- B. called number expansion
- C. external number mask of the called party
- D. external phone number mask of the calling party

**Correct Answer:** D

**Section:** (none)

**Explanation**

**Explanation/Reference:**

**QUESTION 33**

When comparing SIP H.323 and MGCP, which of the following is specific to SIP?

- A. The dial plan is directly on the gateway
- B. SIP provides support for third-party entities
- C. SIP defines Translation per the gateway
- D. SIP has a centralized dial plan

**Correct Answer:** B

**Section:** (none)

**Explanation**

**Explanation/Reference:**

**QUESTION 34**

Which pattern does the route pattern \+61278[^3-5]59XXX match?

- A. \+61278359001
- B. +61278459001
- C. 278259001
- D. +61278259001
- E. +612783559001

**Correct Answer:** B

**Section:** (none)

**Explanation**

**Explanation/Reference:**

**QUESTION 35**

What are two characteristics of a Cisco Unified Communications Manager Enterprise parameter? (Choose two.)

- A. It is used to configure settings for specific services
- B. It is used to define end-user authentication settings
- C. It sets initial values of device-defaults
- D. It is used to configure settings for different services
- E. It is used to define clusterwide settings

**Correct Answer:** AC

**Section:** (none)

**Explanation**

**Explanation/Reference:**

**QUESTION 36**

What is the default option for framing when you configure a T1 controller?

- A. Super Frame
- B. alternate mark inversion
- C. Extended Super Frame
- D. cyclic redundancy check 4
- E. high-density bipolar 3
- F. No-CRC4
- G. binary 8-zero substitution
- H. Australia

**Correct Answer:** AC

**Section:** (none)

**Explanation**

**Explanation/Reference:**

**QUESTION 37**

Which two codecs are the best codecs to use in WAN and LAN? (Choose two.)

- A. WAN codec G.711
- B. LAN codec G.729
- C. WAN codec G.729
- D. LAN codec G.711

**Correct Answer:** CD

**Section:** (none)

**Explanation**

**Explanation/Reference:**

**QUESTION 38**

If the route patterns 5XXX, 51XX, 513X and 5134 exist within a call route database, which pattern would be matched if the dialed number was 5324?

- A. 5XXX
- B. 51XX
- C. 513X
- D. 51X34

**Correct Answer:** A

**Section:** (none)

**Explanation**

**Explanation/Reference:**

**QUESTION 39**

Refer to the exhibit.

**Cisco Unified CM Administration**  
For Cisco Unified Communications Solutions

System > Call Routing > Media Resources > Advanced Features > Device > Application > User Management > DUB Administration > Help >

### Region Configuration

Save Delete Reset Apply Config Add New

**Region Information**  
Name: REGIONS

**Region Relationships**

Region	Audio Codec Preference List	Maximum Audio Bit Rate	Maximum Session Bit Rate for Video Calls	Maximum
REGIONS	CCNP-COLLAB	64 kbps	384 kbps	
REGIONS2	CCNP-COLLAB	64 kbps (G.722, G.711)	Use System Default (384 kbps)	
NOTE: Regions not displayed Use System Default Use System Default Use System Default				

---

**Cisco Unified CM Administration**  
For Cisco Unified Communications Solutions

System > Call Routing > Media Resources > Advanced Features > Device > Application > User Management > DUB Administration > Help >

### Audio Codec Preference List Configuration

Save Delete Copy Add New

**Status**  
Status: Ready

**Audio Codec Preference List Information**

Name: CCNP-COLLAB  
Description: CCNP-COLLAB

Codecs in List:

- G.722 48k
- G.711 A-Law 64k
- G.729 8k
- G.711 A-Law 8k

An engineer is troubleshooting a codec negotiation issue where both endpoints that are involved in the call support the codecs listed in the exhibit. Which audio codec is selected if a call between two endpoints in Region 1 is placed?

A. G722

- B. G729
- C. G711a
- D. G711u

**Correct Answer:** A

**Section:** (none)

**Explanation**

**Explanation/Reference:**

#### **QUESTION 40**

If no SIP dial rules are configured on an IP phone, at which three points in the collection of digits does a Type A SIP phone send digits to the Cisco Unified Communications Manager? (Choose three.)

- A. when the inter digit timer expires
- B. when the collected digits match a SIP dial rule
- C. when the user presses the Dial softkey
- D. as each digit is collected (it is sent for analysis)
- E. when the user presses the # key

**Correct Answer:** ACE

**Section:** (none)

**Explanation**

**Explanation/Reference:**

#### **QUESTION 41**

Which two types of encoding are available to configure a T1 controller for CAS? (Choose two.)

- A. B8SF
- B. AMI
- C. B8ZS
- D. SF
- E. AME
- F. ESF

**Correct Answer:** BC

**Section:** (none)

**Explanation****Explanation/Reference:****QUESTION 42**

Every VoIP endpoint must select one specific codec. Which of these codecs is the mandatory codec?

- A. G.729
- B. G.728
- C. G.722
- D. G.711
- E. H.264

**Correct Answer:** D

**Section:** (none)

**Explanation****Explanation/Reference:****QUESTION 43**

Which three Cisco Unified Communications Manager settings can be used to support IP phone services? (Choose three.)

- A. Device Defaults
- B. Enterprise Parameters
- C. IP Phone Service Configuration window
- D. Common Phone Profile
- E. Service Parameters
- F. Phone Configuration window

**Correct Answer:** BDF

**Section:** (none)

**Explanation****Explanation/Reference:****QUESTION 44**


Refer to the exhibit.

 **Cisco Unified CM Administration**  
For Cisco Unified Communications Solutions

Navigation

System ▾ Call Routing ▾ Media Resources ▾ Voice Mail ▾ Device ▾ Application ▾ User Management ▾ Bulk Administration ▾

**SIP Route Pattern Configuration** Related

 Save  Delete  Copy  Add New

**Status**

 Add successful

**Pattern Definition**

Pattern Usage	Enrutamiento de dirección IP
IPv4 Pattern*	<input type="text" value="10.200.6.3"/>
IPv6 Pattern	<input type="text"/>
Description	<input type="text" value="Monterrey"/>
Route Partition	<input type="text" value="Interina"/> ▾
SIP Trunk/Route List*	<input type="text" value="RL-Monterrey"/> ▾

☐ Block Pattern

[\(Edit\)](#)

**Calling Party Transformations**☐ Use Calling Party's External Phone MaskCalling Party Transformation Mask Prefix Digits (Outgoing Calls) Calling Line ID Presentation\* Calling Line Name Presentation\* **Connected Party Transformations**Connected Line ID Presentation\* Connected Line Name Presentation\*    

\*- indicates required item.

**Cisco Unified CM Administration**  
 For Cisco Unified Communications Solutions

System ▾ Call Routing ▾ Media Resources ▾ Advanced Features ▾ Device ▾ Application ▾ User Management ▾ Bulk Administ

**Gateway Configuration**

Save
 Delete
 Copy
 Reset
 Apply Config
 Add New

**Status**  

Status: Ready

**Device Information**

Product	H.323 Gateway
Device Protocol	H.225
Registration:	Unknown
IPv4 Address:	10.200.6.3
Device is not trusted	
Device Name*	<input type="text" value="10.200.6.3"/>
Description	<input type="text" value="10.200.6.3 Monterrey"/>
Device Pool*	<input type="text" value="DP-Monterrey"/>
Common Device Configuration	<input type="text" value=" &lt; None &gt;"/>

A Network Administrator needs to create a SIP route pattern to communicate with Monterrey's Gateway. The Administrator does not understand why this is not working properly. Which two statements explain the issue and resolve the problem? (Choose two.)

- A. The Administrator needs to set up a SIP trunk between Monterrey's Gateway and Cisco Unified Communications Manager
- B. The Administrator should type the reload command into Monterrey's Gateway
- C. The issue is caused by a failure of communication between the Monterrey's Gateway and Cisco Unified Communications Manager

D. The issue is caused by incorrect protocol integration between Monterrey's Gateway and Cisco Unified Communications Manager

**Correct Answer:** AD

**Section:** (none)

**Explanation**

**Explanation/Reference:**

#### **QUESTION 45**

Which Cisco Unified Communications Manager default global conference setting should be changed to ensure fraud prevention?

- A. Advanced Ad Hoc Conference Enabled
- B. Enable Click-to-Conference for Third-Party Applications
- C. Drop Ad Hoc Conference
- D. Block OffNet to OnNet Transfer
- E. MCU Conference Bridge Custom Layout Index

**Correct Answer:** C

**Section:** (none)

**Explanation**

**Explanation/Reference:**

#### **QUESTION 46**

Which three steps are needed to enable time-of-day call routing? (Choose three.)

- A. Configure an access list
- B. Configure a time period
- C. Configure a time schedule
- D. Configure a route pattern
- E. Configure a partition
- F. Configure dial rules
- G. Configure a calling search space

**Correct Answer:** BCG

**Section:** (none)

**Explanation**

**Explanation/Reference:****QUESTION 47**

What are two characteristics of a Cisco Unified Communications Manager Express dial plan? (Choose two.)

- A. partitions and calling search spaces
- B. COR
- C. dial peers
- D. voice translation rules
- E. route patterns

**Correct Answer:** BC

**Section:** (none)

**Explanation**

**Explanation/Reference:****QUESTION 48**

Which four modes are available on the Cisco TelePresence MCU MSE 8510 to connect to a gatekeeper? (Choose four.)

- A. direct mode
- B. H.225-routed mode
- C. H.265-routed mode
- D. H.245-routed mode
- E. full proxy mode
- F. partial proxy mode

**Correct Answer:** ABDE

**Section:** (none)

**Explanation**

**Explanation/Reference:****QUESTION 49**

Which four call coverage features are used by voice gateways? (Choose four.)

- A. call hunt

- B. Call Park
- C. Call Pickup
- D. call redirecting
- E. overlaid phone-dn
- F. basic automatic call distribution
- G. overlaid ephone-dn
- H. basic manual call distribution

**Correct Answer:** ACFG

**Section:** (none)

**Explanation**

**Explanation/Reference:**

#### **QUESTION 50**

Which two of the following DSPs can be used in heterogenous conferencing to achieve the required transsizing and transcoding functionality? (Choose two.)

- A. PVDM3-256
- B. PVDM2-256
- C. PVDM-192
- D. PVDM3-32
- E. PVDM3-192
- F. PVDM2-128

**Correct Answer:** AE

**Section:** (none)

**Explanation**

**Explanation/Reference:**

#### **QUESTION 51**

A voice engineer is troubleshooting an issue that involves incoming calls to POTS lines. Which command verifies the digits that are received by voice-port?

- A. debug voip dial-per
- B. debug vtsp session

- C. debug vtsp dsp
- D. debug call treatment
- E. debug voice protocol

**Correct Answer:** C

**Section:** (none)

**Explanation**

**Explanation/Reference:**

#### **QUESTION 52**

Which two Cisco products allow the use of a dial plan with E.164, H.323, SIP, and DNS? (Choose two.)

- A. Cisco Expressway
- B. Cisco Unified Communications Manager
- C. Cisco Unified Border Element
- D. Cisco IM and Presence
- E. Cisco TelePresence Video Communication Server

**Correct Answer:** AE

**Section:** (none)

**Explanation**

**Explanation/Reference:**

#### **QUESTION 53**

If the route patterns 5XXX, 51XX, 513X, and 5134 exist within a call route database, which pattern would be matched if the dialed number was 5124?

- A. 5XXX
- B. 51XX
- C. 513X
- D. 5134

**Correct Answer:** B

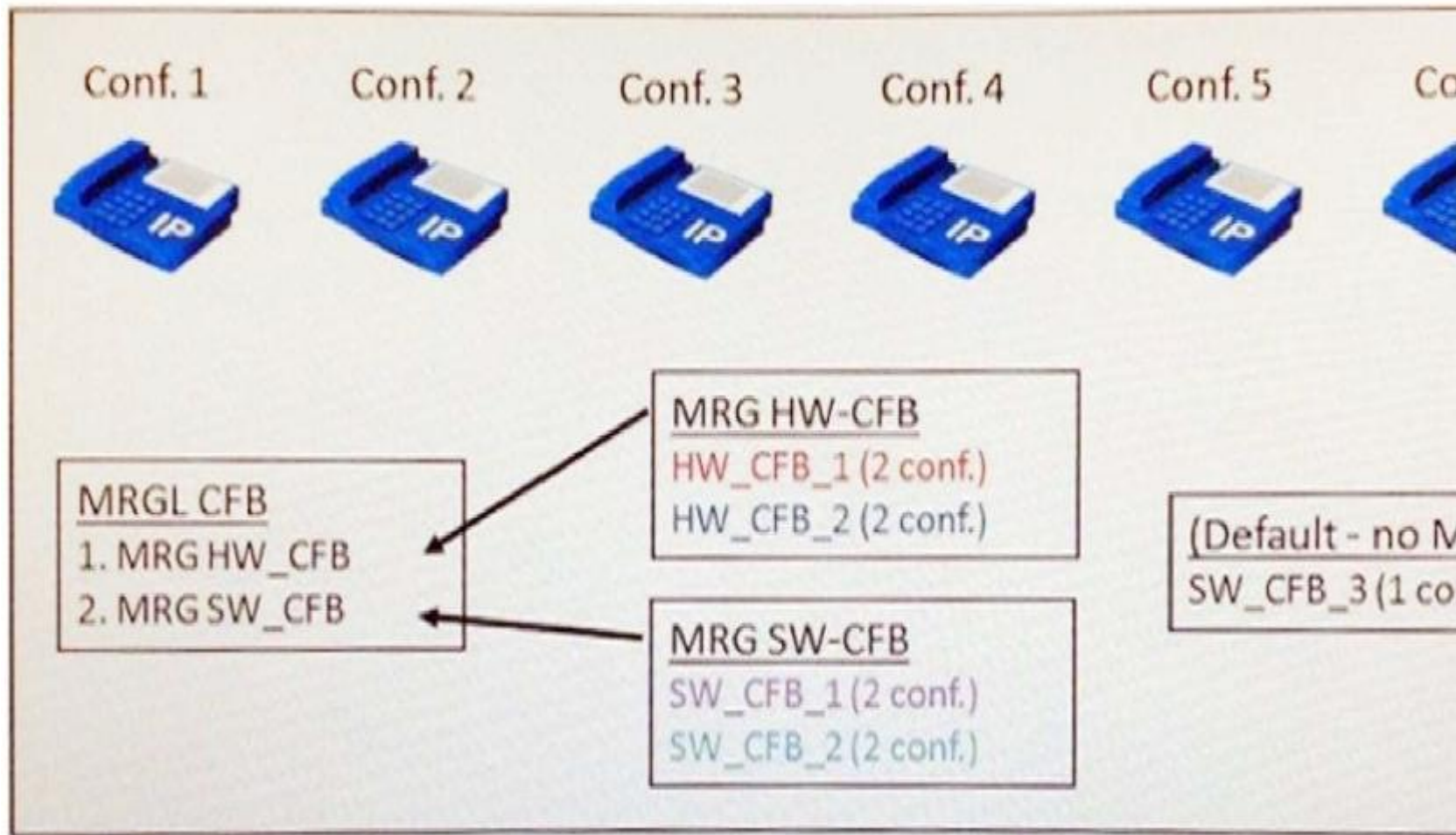
**Section:** (none)

**Explanation**

**Explanation/Reference:**

**QUESTION 54**

Refer to the exhibit.



Which conference resource is Conference 2 using assuming the MRGL has just been reset and all 6 conferences have become active?

A. SW\_CFB\_3

- B. HW\_CFB\_2
- C. HW\_CFB\_1
- D. SW\_CFB\_2
- E. SW\_CFB\_1

**Correct Answer:** B

**Section:** (none)

**Explanation**

**Explanation/Reference:**

#### **QUESTION 55**

The Cisco IP Phone of your company operator is on extension 7000. However, users normally dial 0 to get the operator. Which action sends calls that were made to 0 to the operator?

- A. Create a route pattern of 0 and use a called party transform mask of 7XXX
- B. Create a translation pattern for 7000 and a called party transform mask of 0
- C. Create a translation pattern for 0 and a called party transform mask of 7000
- D. Create the IP phone overlay feature so the operator's line has 0 and 7000 assigned to it
- E. Create a translation pattern for 0 and a calling party transform mask of 7000

**Correct Answer:** C

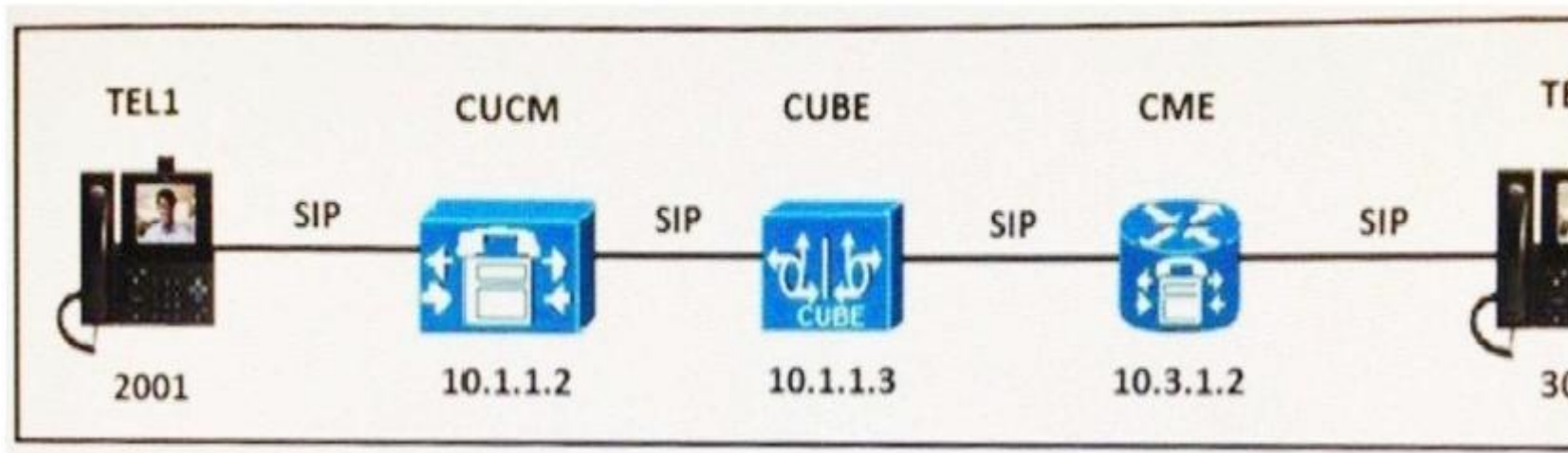
**Section:** (none)

**Explanation**

**Explanation/Reference:**

#### **QUESTION 56**

Refer to the exhibit.



An engineer is working on a ticket that reports TEL1 cannot call TEL2. These dial peers are configured to route the call between the endpoints.

```
dial-peer voice 2001 voip
destination-pattern 2001
session protocol sipv2
session target ipv4:10.1.1.2
incoming called-number .
codec g 722-64
video codec h264
dtmf-relay rtp-nte sip-notify sip-kpml
no vad
```

While troubleshooting, the engineer discovers that the Cisco Unified Border Element is giving the error "SIP/2.0 403 Forbidden". Which two Cisco Unified Border Element configurations resolve this issue? (Choose two.)

- A. voice service voip
  - mode border-element
  - ip address trusted list
  - ipv4 10.1.1.0 255.255.255.0
  - ipv4 10.2.1.0 255.255.255.0
  - allow-connections sip to sip
  - sip
  - bind control source-interface loopback0
  - bind media source-interface loopback0

- B. voice service voip  
no ip address trusted authenticate  
mode border-element  
allow-connections sip to sip  
sip  
bind control source-interface loopback0  
bind media source-interface loopback0
- C. voice service voip  
mode border-element  
ip address trusted list  
allow-connections sip to sip  
sip  
bind control source-interface loopback0  
bind media source-interface loopback0
- D. voice service voip  
mode border-element  
allow-connections sip to sip  
sip  
bind control source-interface loopback0  
bind media source-interface loopback0
- E. voice service voip  
mode border-element  
ip address trusted list  
ipv4 10.1.1.0 255.255 255.0  
ipv4 10.3.1.0 255.255.255.0  
allow-connections sip to sip  
sip  
bind control source-interface loopback0  
bind media source-interface loopback0

**Correct Answer:** DE

**Section:** (none)

**Explanation**

**Explanation/Reference:**

#### **QUESTION 57**

Which DiffServ PHB classification is recommended by Cisco for interactive video traffic?

- A. AF31
- B. CS3

- C. EF
- D. AF41
- E. CS4

**Correct Answer:** D

**Section:** (none)

**Explanation**

**Explanation/Reference:**

#### **QUESTION 58**

Which route pattern is used when 25911 is dialed from an endpoint with a CSS that can access the required partition?

- A. 25XXX
- B. 2[56]XXX
- C. 2591[12]
- D. 259XX

**Correct Answer:** C

**Section:** (none)

**Explanation**

**Explanation/Reference:**

#### **QUESTION 59**

Which three descriptions are true? (Choose three.)

- A. The class of service is a parameter that is used for traffic classification and marking at Layer 2
- B. The IP precedence is a parameter that is used for traffic classification and marking at Layer 2
- C. The differentiated services code point is a parameter that is used for traffic classification and marking at Layer 2
- D. The class of service is a parameter that is used for traffic classification and marking at Layer 3
- E. The IP precedence is a parameter that is used for traffic classification and marking at Layer 3.
- F. The differentiated services code point is a parameter that is used for traffic classification and marking at Layer 3

**Correct Answer:** AEF

**Section:** (none)

**Explanation**

**Explanation/Reference:****QUESTION 60**

Which two codecs are required for Cisco WebEx Enabled TelePresence? (Choose two.)

- A. G.711 codec for audio
- B. H.264 codec for video
- C. G.729 codec for audio
- D. G. 711 or G. 729 codec for audio
- E. H.263 codec for video
- F. H.264 or H.263 codec for video

**Correct Answer:** AB

**Section:** (none)

**Explanation**

**Explanation/Reference:****QUESTION 61**

When configuring an H.323 gateway, which configuration option can be used to set whether an incoming call is considered off the network (OffNet) or on the network (On Net)?

- A. call classification
- B. call location
- C. device pool
- D. signaling port

**Correct Answer:** A

**Section:** (none)

**Explanation**

**Explanation/Reference:****QUESTION 62**

Which three items have a calling search space? (Choose three.)

- A. transcoder

- B. gateways
- C. phone lines
- D. phones
- E. partitions
- F. AAR groups

**Correct Answer:** BCD

**Section:** (none)

**Explanation**

**Explanation/Reference:**

#### **QUESTION 63**

You are a Voice Engineer working at ABC Company. You are asked to configure Cisco Unified Border Element in Cisco Unified Communications Manager. Which two configurations are required? (Choose two.)

- A. Configure a SIP profile with Early Offer support for voice and video calls; insert MTP as needed
- B. Change the SIP trunk security profile to a nonsecure SIP trunk profile
- C. Under the SIP information configuration, set the destination port to 5061
- D. Bind the SIP signaling to the Cisco Unified Border Element interface
- E. Configure dial peers on Cisco Unified Border Element for inbound and outbound calls appropriately

**Correct Answer:** AB

**Section:** (none)

**Explanation**

**Explanation/Reference:**

#### **QUESTION 64**

Which two options are resources in a route list that route calls that match a defined route pattern? (Choose two.)

- A. gateways
- B. route groups
- C. virtual machine servers
- D. IP phones

**Correct Answer:** AB

**Section:** (none)

**Explanation****Explanation/Reference:****QUESTION 65**

Refer to the exhibit.

911  
9.[2-9]XXXXXX  
9.1[2-9]XX[2-9]XXXXXX  
9.18[0,6-8][0,6-8]XXXXXXX  
9.1900XXXXXXX  
9011.!

To reach an external number, a user first dials a 9. Which route pattern will be matched if a user dials the tollfree number 18005550123?

- A. 911
- B. 9.[2-9]XXXXXX
- C. 9.1[2-9]XX[2-9]XXXXXX
- D. 9.18[0,6-8][0,6-8]XXXXXXX
- E. 9.1900XXXXXXX
- F. 9011.!

**Correct Answer: C**

**Section: (none)**

**Explanation****Explanation/Reference:****QUESTION 66**

Users that are subscribed to the default corporate directory are complaining that when they press the Directories button, they receive an error message regarding the URL. Which two parameters need to be edited? (Choose two.)

- A. Verify that the corporate directory has the Enabled check box checked in the Enterprise Parameter> Phone URL Parameters page
- B. Reset the Enterprise Phone URL Parameters
- C. Reset the Service Parameter > Phone URL Parameters
- D. Change the URLs under Enterprise Parameters to match the DNS name or the IP address being used by the server being configured and reset the IP phones
- E. Verify that the corporate directory has the Enabled check box checked in the IP Phone Services > Configuration Service Information page

- F. Select the Service Parameter for the appropriate server and Cisco CallManager (active) and change the URLs for each service to match the DNS name or IP address of the server being configured

**Correct Answer:** DE

**Section:** (none)

**Explanation**

**Explanation/Reference:**

#### **QUESTION 67**

Which QoS model is bandwidth-dedicated to provide sufficient quality for applications that need high resolution, such as video terminals?

- A. DiffServ
- B. Best-Effort
- C. DiffServf
- D. IntServ

**Correct Answer:** A

**Section:** (none)

**Explanation**

**Explanation/Reference:**

#### **QUESTION 68**

Which two statements describe the function of the off-net option in a route pattern? (Choose two.)

- A. The off-net option indicates that if a call is not routed through this route pattern, it is considered off the local network, or "off-net"
- B. This option could be used to block an external call from transferring to an internal party
- C. This option could be used to block an external call from transferring to an external party
- D. The off-net option indicates that if a call is routed through this route pattern, it is considered off the local network, or "off-net."

**Correct Answer:** CD

**Section:** (none)

**Explanation**

**Explanation/Reference:**

#### **QUESTION 69**

An engineer is designing a new dial plan for a customer that has offices in several countries on four continents around the world. This client also wants to integrate with a Microsoft Lync backend. Which dial plan type should the engineer recommend?

- A. SIP URI
- B. TEHO
- C. E.164
- D. H.323

**Correct Answer:** C

**Section:** (none)

**Explanation**

**Explanation/Reference:**

#### QUESTION 70

You have two groups of managers that need to hold Meet-Me conferences. You want each group to have access to a range of 10 Meet-Me numbers. What are the two best ways to accomplish this? (Choose two.)

- A. Create two different partitions and add both groups of 10 Meet-Me conference numbers to the partitions
- B. Ensure that the 10 Meet-Me conference numbers overlap with existing ad hoc conferencing numbers
- C. Create two different groups of Meet-Me conference numbers, add them to the partition, and add the partition to the two manager groups to provide limited access
- D. Create a different partition for each group of managers and assign a set of 10 Meet-Me conference numbers to each
- E. Create two groups of 10 Meet-Me conference numbers that do not overlap with any other number in the numbering plan

**Correct Answer:** DE

**Section:** (none)

**Explanation**

**Explanation/Reference:**

#### QUESTION 71

What is a route list?

- A. a list of locations
- B. an ordered list of regions
- C. a list of route patterns
- D. an ordered list of gateways and trunks

E. an ordered list of route groups

**Correct Answer:** E

**Section:** (none)

**Explanation**

**Explanation/Reference:**

#### **QUESTION 72**

Which three options are valid SIP URI formats? (Choose three.)

- A. jsmith@cisco.com
- B. tel:98765@cisco.com
- C. phone:98765@cisco.com
- D. sip:12345@10.10.10.10:5060;user=phone
- E. sip:bob.cisco.com

**Correct Answer:** ABD

**Section:** (none)

**Explanation**

**Explanation/Reference:**

#### **QUESTION 73**

What is the correct configuration order of call routing to support off-net call routing?

- A. device, route group, route list, route pattern
- B. route list, route group, route pattern, device
- C. route pattern, route list, route group, device
- D. device, route list, route group, route pattern

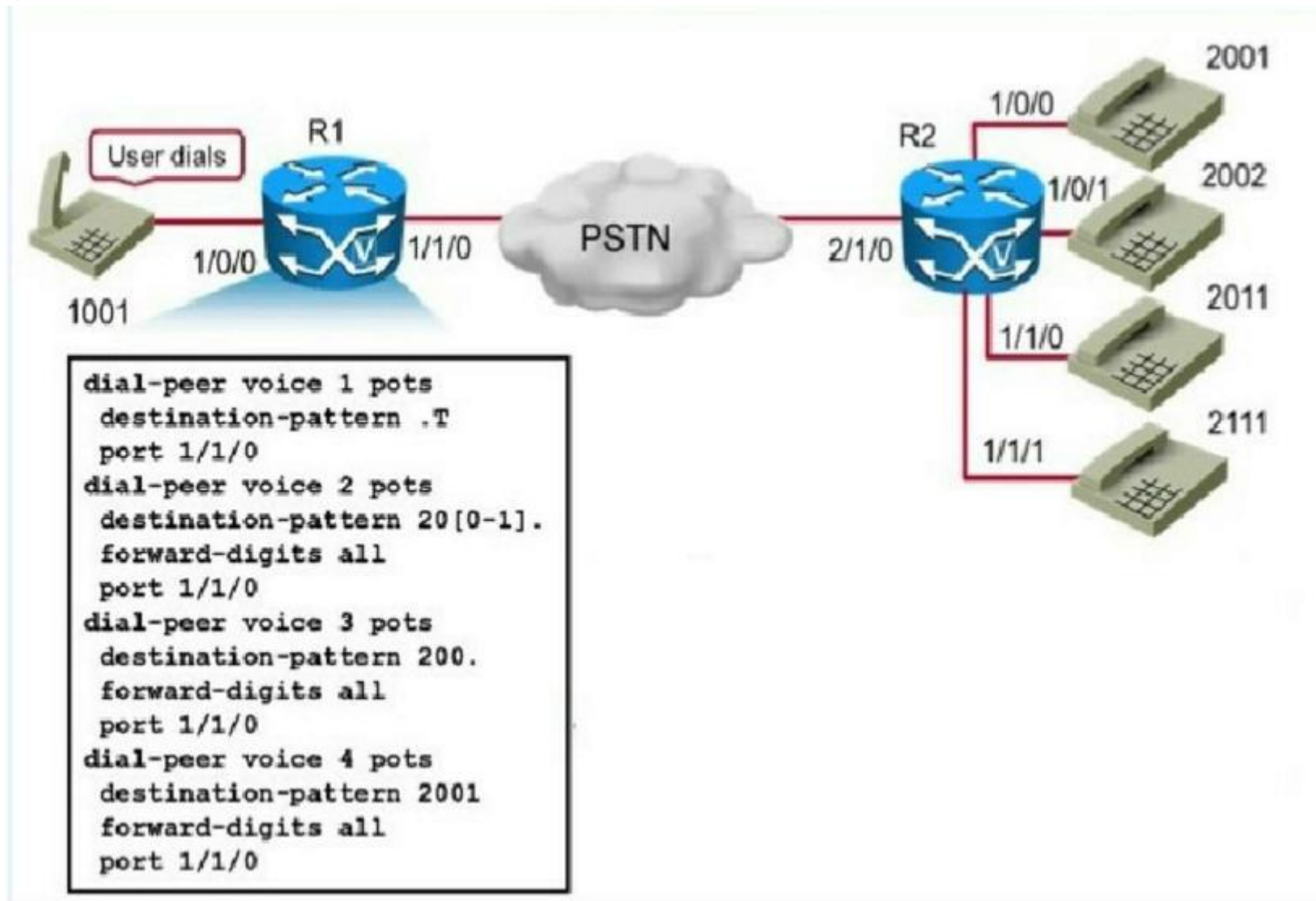
**Correct Answer:** C

**Section:** (none)

**Explanation**

**Explanation/Reference:**

QUESTION 74



If the user at extension 1001 dials the user at extension 2111, which dial peer is used to route the call?

- A. 3
- B. 2

- C. 4
- D. 1

**Correct Answer:** D

**Section:** (none)

**Explanation**

**Explanation/Reference:**

#### **QUESTION 75**

Which three CLI commands allow you to verify the correct VoIP dial-peer matching? (Choose three.)

- A. debug ccsip messages
- B. debug voip ccapi inout
- C. debug dialpeer match
- D. debug voip dialpeer inout
- E. show dialplan number

**Correct Answer:** BDE

**Section:** (none)

**Explanation**

**Explanation/Reference:**

#### **QUESTION 76**

Which discard digits instruction removes all digits prior to the North American Numbering Plan portion of the route pattern?

- A. PreDot
- B. PreAt
- C. Pre
- D. PreNANP

**Correct Answer:** B

**Section:** (none)

**Explanation**

**Explanation/Reference:**

**QUESTION 77**

Which two describe how media resources and audio streams operate with Cisco Unified Communications Manager? (Choose two.)

- A. Audio streams are terminated differently depending on the signaling protocol, such as SCCP or SIP
- B. Audio streams are always terminated by media resources
- C. All media resources register with Cisco Unified Communications Manager
- D. There are no situations in which IP phone-to-IP phone audio streams will go directly between endpoints
- E. Signaling between Cisco Unified Communications Manager and hardware media resources uses the same protocol as the call-signaling type

**Correct Answer:** BC

**Section:** (none)

**Explanation**

**Explanation/Reference:**

**QUESTION 78**

Where do you configure a SIP route pattern?

- A. Call Routing > Route/Hunt > SIP Route Pattern
- B. System> SIP Route Pattern
- C. Call Routing > SIP Route Pattern
- D. Advanced Features > SIP Route Pattern

**Correct Answer:** C

**Section:** (none)

**Explanation**

**Explanation/Reference:**

**QUESTION 79**

Which two algorithms are valid to distribute calls in a route group? (Choose two.)

- A. broadcast
- B. circular
- C. top-down
- D. bottom-up
- E. round-robin

**Correct Answer:** BC

**Section:** (none)

**Explanation**

**Explanation/Reference:**

#### **QUESTION 80**

Which of these determines the Cisco Unified Communications Manager server to which an IP phone registers?

- A. The Cisco Unified Communications Manager group is configured with a Device Pool that designates the primary, secondary, and tertiary servers in the group
- B. Each IP phone is configured with a Device Pool containing the Cisco Unified Communications Manager group that determines which server the IP phone will use as its primary, secondary, and tertiary server
- C. Each IP phone is configured with its primary, secondary, and tertiary server
- D. The Cisco Unified Communications Manager group is configured in the publisher to designate the IP phone groups that will register with the primary, secondary, and tertiary servers in the group

**Correct Answer:** B

**Section:** (none)

**Explanation**

**Explanation/Reference:**

#### **QUESTION 81**

Which Cisco Unified Communications Manager menu path is used to access the softkey template configuration window?

- A. Device> Device Settings > Softkey Templates
- B. Device Settings> Softkey Templates
- C. IP Phone> Template> Softkey
- D. Device> IP Phone> Template> Softkey

**Correct Answer:** A

**Section:** (none)

**Explanation**

**Explanation/Reference:**

**QUESTION 82**

Refer to the exhibit.

Translation Pattern Configuration

Save

---

Status

Status: Ready

---

Pattern Definition


Translation Pattern	0001
Partition	< None >
Description	
Numbering Plan	NUMP
Route Filter	< None >
MLDP Precedence*	Per default
Resource Priority Namespace Network Domain	< None >
Route Class*	Per default
Calling Search Space	No_restrict
External Call Control Profile	< None >
Route Option	<input checked="" type="radio"/> Route this pattern <input type="radio"/> block this pattern

☒ Provide Outside Dial Tone  
☐ Urgent Priority  
☐ Route Next Hop By Calling Party Number

Save

---

**Status**

 Status: Ready

---

**Pattern Definition**

Route Pattern\* 0.0044156789453

Route Partition < None >

Description

Numbering Plan -- Not Selected --

Route Filter < None >

MLPP Precedence\* Par default

☐ Apply Call Blocking Percentage

Resource Priority Namespace Network Domain < None >

Route Class\* Par default

Gateway/Route List\* RL\_TEST (Edit)

Route Option

☒ Route this pattern

☐ Block this pattern Aucahó áffóuf

Call Classification\* OffNet

☐ Allow Device Override ☒ Provide Outside Dial Tone ☐ Allow Overlap Sending ☐ Urgent Priority

☐ Require Forced Authorization Code

Authorization Level\* 0

☐ Require Client Matter Code

When users call number 00044156789453, they have to wait for several seconds before the call is sent. Which action sends the call immediately?

- A. In the translation pattern, change the CSS
- B. In the route pattern, check the Allow Device Override check box
- C. In the route pattern, check the Urgent Priority check box

D. In the translation pattern, check the Route Next Hop By Calling Party Number check box

**Correct Answer:** C

**Section:** (none)

**Explanation**

**Explanation/Reference:**

#### **QUESTION 83**

Which groups will have access to the Meet-Me conference numbers that are set to use the <None> partition?

- A. Only users that have the <None> partition assigned in their calling search space will have access to the Meet-Me conference numbers
- B. All users will have access to the Meet-Me conference numbers
- C. The <None> partition will prevent all users from accessing the Meet-Me conference numbers
- D. Any IP phones with their lines configured in the <None> partition will have access to the Meet-Me conference numbers

**Correct Answer:** B

**Section:** (none)

**Explanation**

**Explanation/Reference:**

#### **QUESTION 84**

Which two components must an engineer configure before configuring SIP route pattern? (Choose two.)

- A. route filter
- B. SIP trunk
- C. route partition
- D. calling search space
- E. SIP profile

**Correct Answer:** BE

**Section:** (none)

**Explanation**

**Explanation/Reference:**

**QUESTION 85**

Which three characteristics of a video stream require the implementation of QoS? (Choose three.)

- A. variable packet rate
- B. constant bandwidth
- C. small packets
- D. high MTU
- E. high packet rate

**Correct Answer:** ADE

**Section:** (none)

**Explanation**

**Explanation/Reference:**

**QUESTION 86**

To verify that proper digit manipulation is being applied when using called party transformation patterns, which Cisco IOS command do you use from the router or voice gateway?

- A. show voice ccapi in out
- B. debug voice ccapi in
- C. show voice ccapi
- D. show voice ccapi in
- E. debug voice ccapi inout
- F. debug voice ccapi out
- G. show voice ccapi out

**Correct Answer:** E

**Section:** (none)

**Explanation**

**Explanation/Reference:**

**QUESTION 87**

Refer to the exhibit.

```
Voice-HUB#show isdn status
Global ISDN Switchtype - primary-dms100
ISDN Serial2/0/0:23 interface
dsl 0, interface ISDN Switchtype - primary-dms100
Layer 1 Status:
ACTIVE
Layer 2 Status:
TEI - 0, Ces - 1, SAPI - 0, State - MULTIPLE_FRAME_ESTABLISH
Layer 3 Status:
0 Active Layer 3 Call(s)
Active dsl 0 CCBs - 0
The Free Channel Mask:0x807FFFFF
Number of L2 Discards - 0, L2 Session ID - 4
Total Allocated ISDN CCBs - 0
```

An engineer is trying to determine the status of the ISDN D Channel on a new PRI circuit, types in the `show isdn status` command, and sees this output. Which two pieces of information can be determined from this output? (Choose two.)

- A. The provider is using the 5ESS protocol
- B. There are four B channels
- C. The connection to the Cisco Unified Communications Manager has been established
- D. The D channel is working correctly
- E. No active calls are established

**Correct Answer:** DE

**Section:** (none)

**Explanation**

**Explanation/Reference:**

#### QUESTION 88

What is the maximum number of 1080p30 HD Conference Participants if an MSE 8000 has four MSE8710 blades clustered?

- A. 48

- B. 180
- C. 720
- D. 800

**Correct Answer:** A

**Section:** (none)

**Explanation**

**Explanation/Reference:**

#### **QUESTION 89**

Which three options can belong to specific partitions? (Choose three.)

- A. voice-mail servers
- B. directory numbers
- C. translation patterns
- D. gateways
- E. IP phones
- F. route patterns

**Correct Answer:** BCF

**Section:** (none)

**Explanation**

**Explanation/Reference:**

#### **QUESTION 90**

What function does the device pool perform?

- A. It separates user and physical location information
- B. It sets the default device parameters for all IP phones in the cluster
- C. It sets the location bandwidth used between different locations
- D. It provides a single point of configuration for every device in a Cisco Unified Communications Manager cluster.

**Correct Answer:** A

**Section:** (none)

**Explanation**

**Explanation/Reference:****QUESTION 91**

By default, what value is voice traffic marked as on a Cisco Catalyst Switch?

- A. DSCP CAS6 value 21, Cos 3
- B. DSCP AF21 value 46, Cos 5
- C. DSCP EF value 46, Cos 7
- D. DSCP EF value 46, Cos 5

**Correct Answer:** D

**Section:** (none)

**Explanation**

**Explanation/Reference:****QUESTION 92**

Which three steps must you take on Cisco Unified Communications Manager to configure Cisco TelePresence Conductor for ad hoc and rendezvous conferences? (Choose three.)

- A. Verify the location configuration
- B. Verify the certificate trusts.
- C. Configure one ICT trunk to TelePresence Conductor
- D. Configure one SIP trunk to TelePresence Conductor
- E. Configure two ICT trunks to TelePresence Conductor
- F. Configure two SIP trunks to TelePresence Conductor

**Correct Answer:** ABD

**Section:** (none)

**Explanation**

**Explanation/Reference:****QUESTION 93**

A customer is integrating two video solutions between regions using a Cisco Unified Border Element and finds that some of the RTP payloads are not compatible with the Cisco Unified Border Element configuration. Which two actions does Cisco recommend to solve this issue? (Choose two.)

- A. Specify the video payload on the voice service
- B. Configure a transparent codec on the dial peers
- C. Configure RTP payload mapping on the dial peers
- D. Configure asymmetric payload on the voice service
- E. Set up a voice class for the video codec

**Correct Answer:** AC

**Section:** (none)

**Explanation**

**Explanation/Reference:**

#### **QUESTION 94**

An engineer configures a router with an ISDN PRI connection that only contains two dial peers as follows:

```
dial-peer voice 10 pots
destination-pattern 9T
port 0/0/0:23
```

```
dial-peer voice 100 voip
destination-pattern 45..
session target ipv4:10.2.10.1
```

When an inbound call is placed from the PSTN to extension 4510, a dial tone is heard. Which additional dial peer is needed to allow the call to terminate directly to the internal number?

- A. dial-peer voice 1 pots  
answer-address .  
direct-inward-dial
- B. dial-peer voice 1 pots  
destination-pattern 45..  
direct-inward-dial
- C. dial-peer voice 1 pots  
incoming called-number .  
direct-inward-dial
- D. dial-peer voice 1 pots  
destination-pattern 45..  
port 0/0/0:23  
direct-inward-dial

**Correct Answer:** C

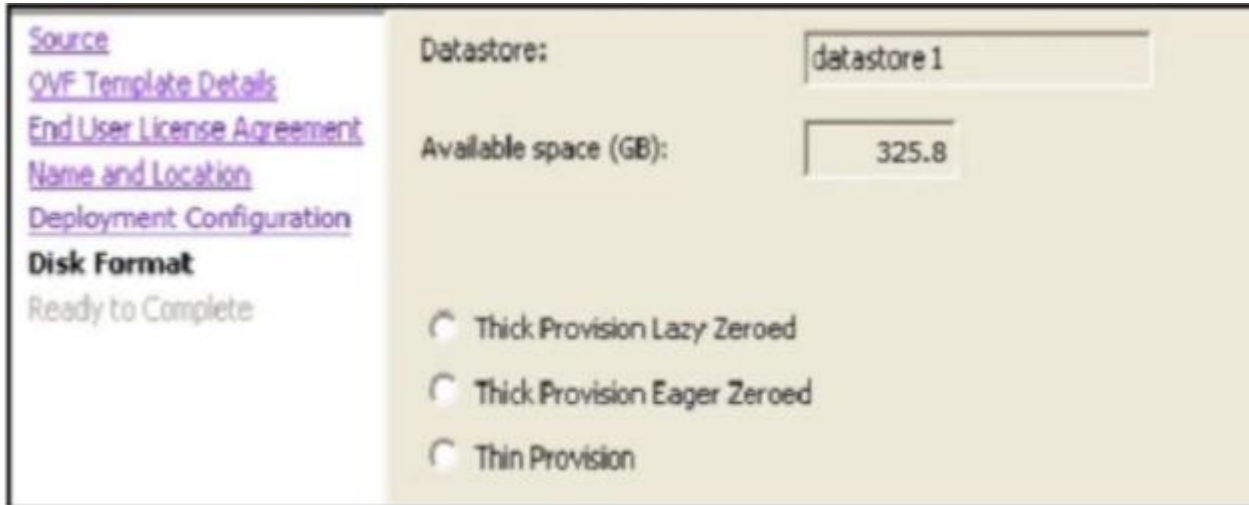
**Section:** (none)

**Explanation**

**Explanation/Reference:**

**QUESTION 95**

Refer to the exhibit



Which option is the most highly recommended option to install Cisco TelePresence Conductor on the virtual machine?

- A. Thick Provision Eager Zeroed
- B. Thick Provision Lazy Zeroed
- C. Thick Provision
- D. Thin Provision

**Correct Answer:** B

**Section:** (none)

**Explanation**

**Explanation/Reference:**

**QUESTION 96**

You need to delete an auto-registration Cisco Unified Communications Manager group for a cluster. What should you do?

- A. Remove the Cisco Unified CallManager group devices
- B. Disable auto-registration settings in the Cisco Unified CallManager group
- C. Assign a different call group as the auto-registration Cisco Unified CallManager group
- D. Delete the auto-registration Cisco Unified Call Manager group without performing any action

**Correct Answer:** B

**Section:** (none)

**Explanation**

**Explanation/Reference:**

#### **QUESTION 97**

When dialing off-hook from an SCCP phone, how does Cisco Unified Communications Manager analyze the incoming dialed digits?

- A. SIP dial rules
- B. en bloc dialing
- C. digit-by-digit analysis
- D. KPML

**Correct Answer:** C

**Section:** (none)

**Explanation**

**Explanation/Reference:**

#### **QUESTION 98**

Employees at a company must dial 9 first to reach an external number. Which route pattern is used to route the call if a user dials the toll-free number 1-866-555-1212?

- A. 9.18XX[2-9]XXXXXX
- B. 9.18[0,5-8][0,5-8]XXXXXX
- C. 9.1XXXXXXXXXX
- D. 9.1866XXXXXX
- E. 9.1866[2-9]XXXXXX
- F. 9.1[2-9]XX[2-9]XXXXXX

**Correct Answer:** E

**Section: (none)**

**Explanation**

**Explanation/Reference:**

**QUESTION 99**

An organization has built their video infrastructure to perform ad hoc video calls, but they also need to conduct managed video conference calls. Which hardware component is needed to conduct these calls?

- A. VCS-E
- B. IOS gateway
- C. MCU
- D. TelePresence server

**Correct Answer: CD**

**Section: (none)**

**Explanation**

**Explanation/Reference:**

**QUESTION 100**

Which statement about the relationship between gateways and route groups is true?

- A. Each gateway can belong to only one route group and can be listed only once within that route group
- B. Each gateway can belong to only one route group and can be listed multiple times within that route group
- C. Each gateway can belong to multiple route groups and can be listed only once within each route group
- D. Each gateway can belong to multiple route groups and can be listed multiple times within each route group

**Correct Answer: C**

**Section: (none)**

**Explanation**

**Explanation/Reference:**

**QUESTION 101**

Which statement about the DiffServ QoS deployment architecture is true?

- A. DiffServ does not differentiate traffic types and thus cannot provide service levels

- B. DiffServ architecture differentiates and classifies various types of traffic and provides several levels of service based on that classification
- C. Resource Reservation Protocol is an example of a DiffServ mechanism where each router on the path for packet transmission is informed of the upcoming packet stream
- D. DiffServ architecture provides QoS by assuring treatment for a specific traffic flow

**Correct Answer:** B

**Section:** (none)

**Explanation**

**Explanation/Reference:**

#### **QUESTION 102**

Which three statements about the default VoIP dial peer are true? (Choose three.)

- A. VAD is disabled
- B. RSVP is not supported
- C. Only the G. 711 codec is supported
- D. The G.729 and G.711 codecs are supported
- E. Fax-rate service is supported
- F. DTMF relay is supported

**Correct Answer:** BDE

**Section:** (none)

**Explanation**

**Explanation/Reference:**

#### **QUESTION 103**

An engineer is setting up a system with voice and video endpoints using auto-QoS policy on the switches. Which DSCP values are expected for interactive voice and video?

- A. EF and AF41
- B. EF and CS6
- C. EF and CS3
- D. EF and AF21

**Correct Answer:** A

**Section:** (none)

**Explanation****Explanation/Reference:****QUESTION 104**

```
!  
ccm-manager redundant-host 10.1.5.3  
ccm-manager mgcp  
ccm-manager fax protocol cisco ccm-manager config  
!  
mgcp  
mgcp call-agent 10.1.5.2 2427 service-type mgcp  
version 0.1  
no mgcp package-capability res-package  
no mgcp timer receive-rtcp  
mgcp fax t38 ecm  
!  
mgcp profile default  
!
```

A Cisco Unified Communications Manager group is configured with the subscriber (10.1.5.3) listed first and the publisher (10.1.5.2) listed second. Which Cisco Unified Communications Manager is used for incoming calls through an MGCP gateway?

- A. the publisher
- B. both the publisher and subscriber in a round-robin format
- C. the first server listed in the Cisco Unified Communications Manager group list
- D. the subscriber

**Correct Answer:** A

**Section:** (none)

**Explanation****Explanation/Reference:****QUESTION 105**

Which route pattern wildcard character is used to terminate the interdigit timeout?

- A. \$
- B. !
- C. #

D. .

**Correct Answer:** C

**Section:** (none)

**Explanation**

**Explanation/Reference:**

**QUESTION 106**

Which route pattern is the best match for the range of 6000 to 6599?

- A. 65XX
- B. 60XX
- C. 6[05]XX
- D. 6XXX
- E. 6[0-5]XX

**Correct Answer:** E

**Section:** (none)

**Explanation**

**Explanation/Reference:**

**QUESTION 107**

Which command is used to enter the DSP farm profile configuration mode?

- A. dspfarm-profile 100 transcode
- B. dspfarmprofile 100 transcode
- C. dspfarm profile 100 transcode
- D. dspfarm 100 profile transcode

**Correct Answer:** C

**Section:** (none)

**Explanation**

**Explanation/Reference:**

**QUESTION 108**

Which codec provides native WebRTC-based video chat support in browsers such as Mozilla Firefox?

- A. H.265
- B. WMV
- C. H.264
- D. G.711
- E. H.323

**Correct Answer:** C

**Section:** (none)

**Explanation**

**Explanation/Reference:**

**QUESTION 109**

When local route groups are used and a user dials 918005551212, what component is ultimately used to route the digits to the local gateway?

- A. The route list applied to the route pattern
- B. The device pool of the calling device
- C. The translation pattern
- D. The gateway or route list associated with the +.! route pattern

**Correct Answer:** B

**Section:** (none)

**Explanation**

**Explanation/Reference:**