

300-070.examcollection.premium.exam.71q

Number: 300-070
Passing Score: 800
Time Limit: 120 min
File Version: 4.0

300-070

Implementing Cisco IP Telephony & Video, Part 1 v1.0

Version 4.0

A

QUESTION 1

What are two characteristics of a partition? (Choose two.)

- A. Assigned to sources of call routing requests
- B. Any group of numbers with the same reachability
- C. Used in conjunction with calling search spaces to track calls to certain numbers
- D. Used in conjunction with calling search spaces to restrict outgoing calls to certain numbers
- E. Contains calling search spaces

Correct Answer: BD

Section: (none)

Explanation

Explanation/Reference:

QUESTION 2

Which two statements about Cisco VCS Addressing Zones are true? (Choose two.)

- A. They can be local to the Cisco VCS or can be remote.
- B. A zone is a collection of endpoints that share the same dialing behavior and bandwidth settings.
- C. They consist of traversal and nontraversal zones.
- D. They can only be local.
- E. They consist of subzones such as DNS zones.

Correct Answer: AB

Section: (none)

Explanation

Explanation/Reference:

QUESTION 3

Which four call coverage features are used by voice gateways? (Choose four.)

- A. call hunt
- B. Call Park
- C. Call Pickup

- D. call redirecting
- E. overlaid phone-dn
- F. basic automatic call distribution
- G. overlaid ephone-dn
- H. basic manual call distribution

Correct Answer: ACFG

Section: (none)

Explanation

Explanation/Reference:

QUESTION 4

Refer to the exhibit.

Translation Pattern Configuration

Save

Status
Status: Ready

Pattern Definition

Translation Pattern: 0.001
Partition: < None >
Description:
Numbering Plan: NANP
Route Filter: < None >
MLPP Precedence*: Par défaut
Resource Priority Namespace Network Domain: < None >
Route Class*: Par défaut
Calling Search Space: No_restriction
External Call Control Profile: < None >
Route Option:
☒ Route this pattern
☐ Block this pattern: Aucune erreur
☒ Provide Outside Dial Tone
☐ Urgent Priority
☐ Route Next Hop By Calling Party Number

Route Pattern Configuration

Save

Status
Status: Ready

Pattern Definition

Route Pattern*: 0.0044156789453
Route Partition: < None >
Description:
Numbering Plan: -- Not Selected --
Route Filter: < None >
MLPP Precedence*: Par défaut
☐ Apply Call Blocking Percentage
Resource Priority Namespace Network Domain: < None >
Route Class*: Par défaut
Gateway/Route List*: RL_TEST (Edit)
Route Option:
☒ Route this pattern
☐ Block this pattern: Aucune erreur
Call Classification*: Offnet
☐ Allow Device Override
☒ Provide Outside Dial Tone
☐ Allow Overlap Sending
☐ Urgent Priority
☐ Require Forced Authorization Code
Authorization Level*: 0
☐ Require Client Matter Code

When users call number 00044156789453, they have to wait for several seconds before the call is sent.
Which action sends the call immediately?

- A. In the translation pattern, change the CSS.
- B. In the route pattern, check the Allow Device Override check box.
- C. In the route pattern, check the Urgent Priority check box.
- D. In the translation pattern, check the Route Next Hop By Calling Party Number check box.

Correct Answer: C

Section: (none)

Explanation

Explanation/Reference:

QUESTION 5

Which three options are valid SIP URI formats? (Choose three.)

- A. jsmith@cisco.com
- B. tel:98765@cisco.com
- C. phone:98765@cisco.com
- D. sip:12345@10.10.10.10:5060;user=phone
- E. sip:bob.cisco.com

Correct Answer: ABD

Section: (none)

Explanation

Explanation/Reference:

QUESTION 6

Which two Cisco products allow the use of a dial plan with E.164, H.323, SIP, and DNS? (Choose two.)

- A. Cisco Expressway
- B. Cisco Unified Communications Manager
- C. Cisco Unified Border Element
- D. Cisco IM and Presence
- E. Cisco TelePresence Video Communication Server

Correct Answer: AE

Section: (none)
Explanation

Explanation/Reference:

QUESTION 7

Refer to the exhibit.

```
911
9.911
9.[2-9]XXXXXX
9.1[2-9]XX[2-9]XXXXXX
9.1800XXXXXXX
9.1866XXXXXXX
9.1877XXXXXXX
9.1888XXXXXXX
9.1900XXXXXXX
9011.!
9011.!#
```

To reach an external number, a user first dials a 9. Which route pattern will be matched if a user dials the toll-free number 18005550123?

- A. 911
- B. 9.[2-9]XXXXXX
- C. 9.1[2-9]XX[2-9]XXXXXX
- D. 9.1800XXXXXXX
- E. 9.1866XXXXXXX

- F. 9.1877XXXXXXX
- G. 9.1888XXXXXXX
- H. 9.1900XXXXXXX
- I. 9011!

Correct Answer: D

Section: (none)

Explanation

Explanation/Reference:


QUESTION 8

Refer to the exhibit.










Route Pattern Configuration

[Relate](#)


Status

 Status: Ready

Pattern Definition

Route Pattern*	<input type="text" value="9.1900XXXXXXX"/>	
Route Partition	<input type="text" value="HQ_LD"/>	
Description	<input type="text"/>	
Numbering Plan	<input type="text" value="-- Not Selected --"/>	
Route Filter	<input >")"="" none="" type="text" value("<=""/>	
MLPP Precedence*	<input type="text" value="Default"/>	
Resource Priority Namespace Network Domain	<input >")"="" none="" type="text" value("<=""/>	
Route Class*	<input type="text" value="Default"/>	
Gateway/Route List*	<input type="text" value="LRG_RL"/>	 (Edit)
Route Option	<input type="radio"/> Route this pattern <input checked="" type="radio"/> Block this pattern	
	<input type="text" value="No Error"/>	
Call Classification*	<input type="text" value="OffNet"/>	
<input type="checkbox"/> Allow Device Override <input checked="" type="checkbox"/> Provide Outside Dial Tone <input type="checkbox"/> Allow Overlap Sending <input type="checkbox"/> Urgent Priority		
<input type="checkbox"/> Require Forced Authorization Code		
Authorization Level*	<input type="text" value="0"/>	
<input type="checkbox"/> Require Client Matter Code		

When a user dials 919005551212, the call fails. Which change do you need to make for this call to be successful?

- A. Change the route partition.
- B. Change the gateway or route list.
- C. Change the route pattern to the correct number of digits.
- D. Change the call classification to OnNet.
- E. Change the route option.

Correct Answer: E

Section: (none)

Explanation

Explanation/Reference:

QUESTION 9

Where do you configure a SIP route pattern?

- A. Call Routing > Route/Hunt > SIP Route Pattern
- B. System > SIP Route Pattern
- C. Call Routing > SIP Route Pattern
- D. Advanced Features > SIP Route Pattern

Correct Answer: C

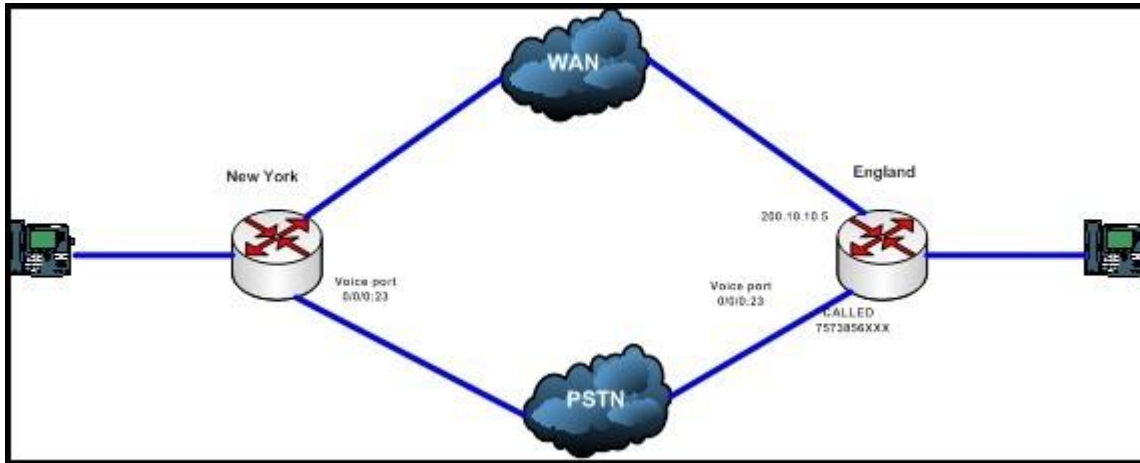
Section: (none)

Explanation

Explanation/Reference:

QUESTION 10

Refer to the exhibit and configuration output.



What are the two main ways from New York to call Extension 6001 in England? (Choose two.)

```
sh run | s Dial-peer
dial-peer voice 2 voip
destination-pattern 6...
preference 0
session-target ipv4: 200.10.10.5
dtmf-relay sip-notify dial-peer voice 3 pots
destination-pattern 6...
preference 1
port 0/0/0:23
prefix 757385
dtmf-relay sip-notify
```

- A. The first way is WAN.
- B. The first way is PSTN.
- C. The second way is WAN.
- D. The second way is PSTN.

Correct Answer: AD

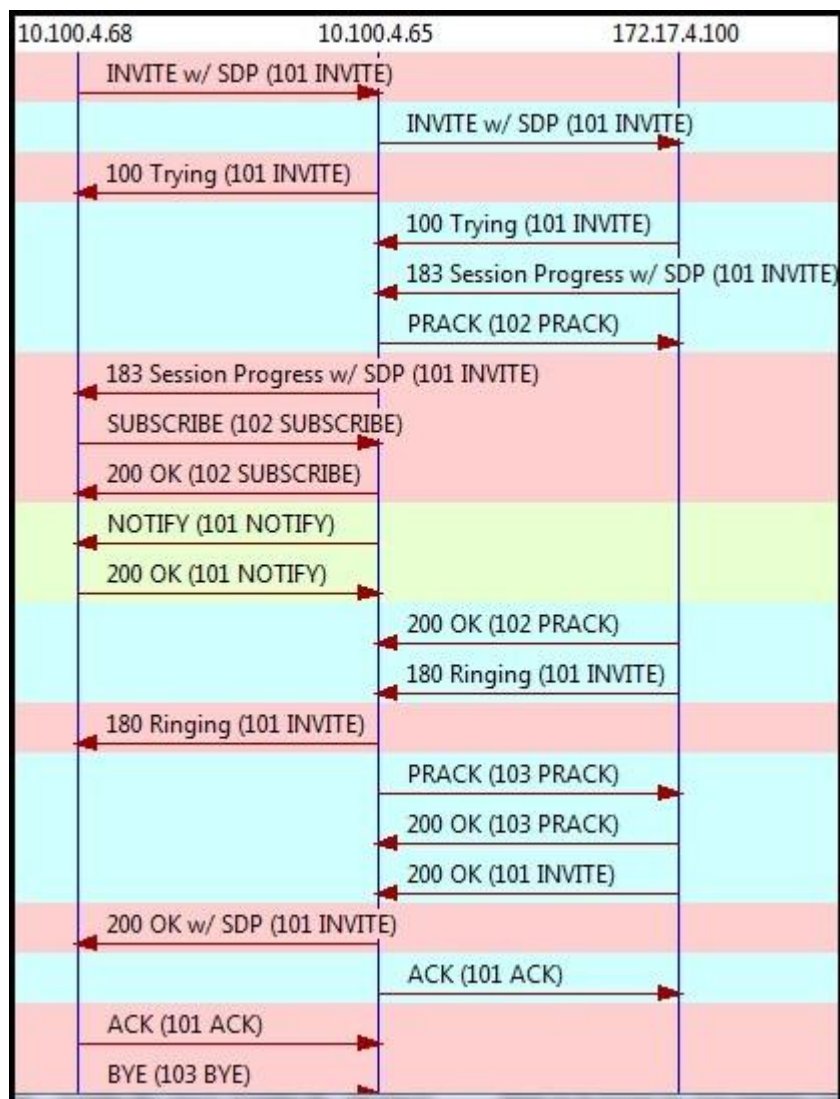
Section: (none)

Explanation

Explanation/Reference:

QUESTION 11

Refer to the exhibit.



Which party has a SIP B2BUA role in the call?

- A. 172.17.4.100
- B. 10.100.4.65 and 172.17.4.100
- C. 10.100.4.65
- D. None of the parties has a B2BUA role in the call.
- E. 10.100.4.68 and 10.100.4.65

Correct Answer: C

Section: (none)

Explanation

Explanation/Reference:

QUESTION 12

Which three commands show the output of an active video call? (Choose three.)

- A. show vrm active_calls
- B. show call active video brief
- C. show voip rtp connections
- D. show voice call
- E. show voice call summary
- F. show video dsp

Correct Answer: BCE

Section: (none)

Explanation

Explanation/Reference:

QUESTION 13

Which two codecs are the best codecs to use in WAN and LAN? (Choose two.)

- A. WAN codec G.711
- B. LAN codec G.729
- C. WAN codec G.729
- D. LAN codec G.711

Correct Answer: CD

Section: (none)

Explanation

Explanation/Reference:

QUESTION 14

Which two codecs are required for Cisco WebEx Enabled TelePresence? (Choose two.)

- A. G.711 codec for audio
- B. H.264 codec for video
- C. G.729 codec for audio
- D. G.711 or G.729 codec for audio
- E. H.263 codec for video
- F. H.264 or H.263 codec for video

Correct Answer: AB

Section: (none)

Explanation

Explanation/Reference:

QUESTION 15

Which configuration output indicates a properly configured T1 digital voice interface?

- A.

```
controller T1 0/0/0
framing esf
linecode b8zs
pri-group timeslots 1-24
!
```
- B.

```
isdn switch-type primary-ni
!
controller T1 0/0/0
framing esf
linecode b8zs
!
```
- C.

```
isdn switch-type primary-ni
!
controller T1 0/0/0
framing esf
```

```
linecode b8zs
pri-group timeslots 1-24
isdn switch-type primary-ni
!
D. isdn switch-type primary-ni
!
controller T1 0/0/0
framing esf
linecode b8zs
!
dial-peer voice 1 pots
destination-pattern 54....
direction-inward.dial
port 0/0/0:23
```

Correct Answer: C

Section: (none)

Explanation

Explanation/Reference:

QUESTION 16

Refer to the exhibit.

```
!  
ccm-manager redundant-host 10.1.5.3  
ccm-manager mgcp  
ccm-manager fax protocol cisco  
ccm-manager config  
!  
mgcp  
mgcp call-agent 10.1.5.2 2427 service-type mgcp  
version 0.1  
no mgcp package-capability res-package  
no mgcp timer receive-rtcp  
mgcp fax t38 ecm  
!  
mgcp profile default  
!
```

A Cisco Unified Communications Manager group is configured with the subscriber (10.1.5.3) listed first and the publisher (10.1.5.2) listed second. Which Cisco Unified Communications Manager is used for incoming calls through an MGCP gateway?

- A. the publisher
- B. both the publisher and subscriber in a round-robin format
- C. the first server listed in the Cisco Unified Communications Manager group list
- D. the subscriber

Correct Answer: A

Section: (none)

Explanation

Explanation/Reference:

QUESTION 17

Which three statements about the default VoIP dial peer are true? (Choose three.)

- A. VAD is disabled.
- B. RSVP is not supported.

- C. Only the G.711 codec is supported.
- D. The G.729 and G.711 codecs are supported.
- E. Fax-rate service is supported.
- F. DTMF relay is supported.

Correct Answer: BDE

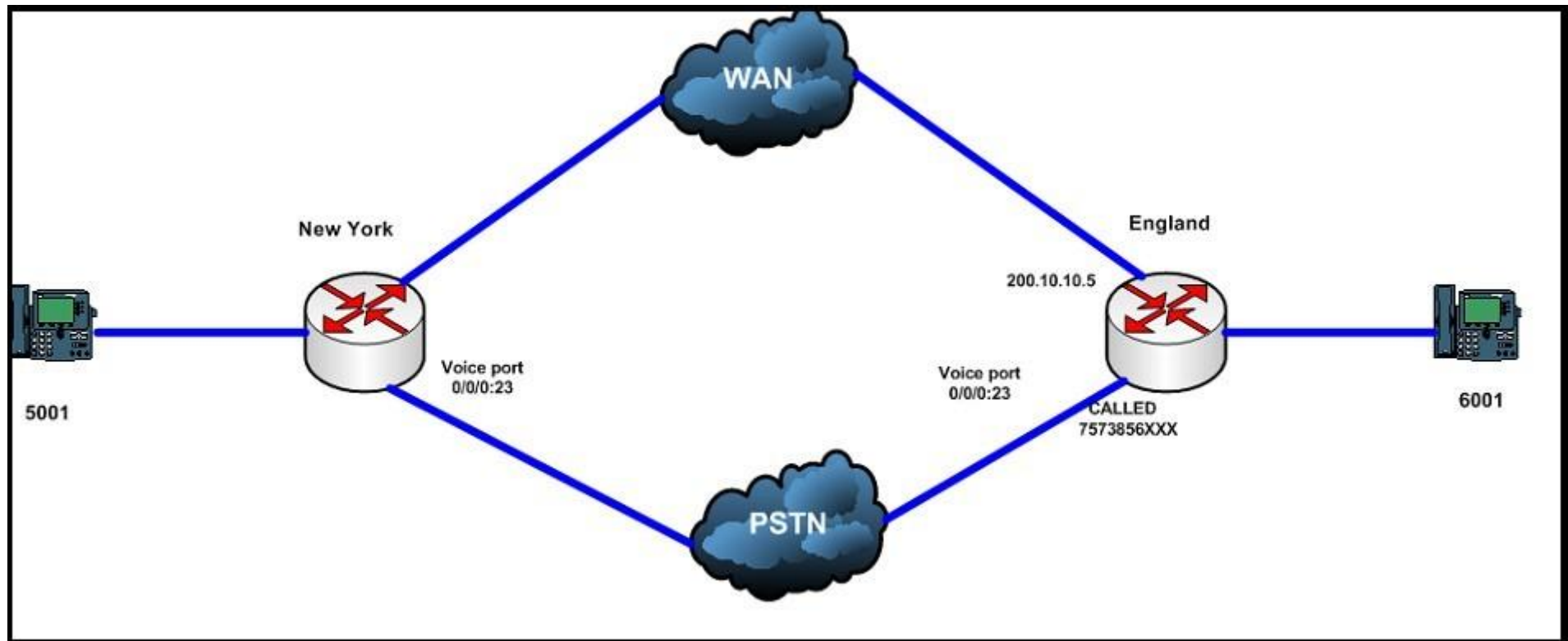
Section: (none)

Explanation

Explanation/Reference:

QUESTION 18

Refer to the exhibit and configuration output.



A user in New York (5001) is trying to call a user in London (6001), but the call cannot be completed. Assuming that the WAN uplink is failing and the voice traffic has to go out toward the PSTN, which command do you need to add to dial peer to solve this issue?

```
dial-peer voice 3 pots
destination-pattern 6...
preference 1
port 0/0/0:23
dtmf-relay sip-notify
```

- A. num-exp 512602 6001
- B. prefix 757385
- C. forward-digits 2
- D. forward-digits 4
- E. prefix 5126

Correct Answer: B

Section: (none)

Explanation

Explanation/Reference:

QUESTION 19

You are a Voice Engineer at ABC Company. You want to implement a voice translation profile to perform the following manipulation: The incoming DNIS 9876562XXX should be modified to 2XXX. Which four commands are required to configure the translation profile? (Choose four.)

- A. voice translation-rule 1
- B. rule 1 /^ 9876562/ /2/
- C. voice translation-profile incoming-calls
- D. translate called 1
- E. rule 1 /^ 9876562\$/ /2/ type subscriber
- F. translation-profile incoming incoming-calls
- G. translate calling 1
- H. translate called rule 1

Correct Answer: ABCD

Section: (none)

Explanation

Explanation/Reference:

QUESTION 20

How do you configure calling privileges on Cisco Unified Communications Manager Express?

- A. corlist
- B. translation profile
- C. zones
- D. access list
- E. search rules

Correct Answer: A

Section: (none)

Explanation

Explanation/Reference:

QUESTION 21

Which three CLI commands allow you to verify the correct VoIP dial-peer matching? (Choose three.)

- A. debug ccsip messages
- B. debug voip ccapi inout
- C. debug dialpeer match
- D. debug voip dialpeer inout
- E. show dialplan number

Correct Answer: BDE

Section: (none)

Explanation

Explanation/Reference:

QUESTION 22

Which three are functions of Cisco Unified Border Element? (Choose three.)

- A. client registration
- B. H.323 and SIP interworking
- C. Lync interworking

- D. transcoding
- E. phone proxy
- F. mobile and remote access

Correct Answer: BDE

Section: (none)

Explanation

Explanation/Reference:

QUESTION 23

Which two configuration items are necessary to configure Cisco Unified Border Element for video? (Choose two.)

- A. voice class codec
- B. voice translation-rule
- C. voice service voip
- D. dial-peer

Correct Answer: CD

Section: (none)

Explanation

Explanation/Reference:

QUESTION 24

Which command is used to enter the DSP farm profile configuration mode?

- A. dspfarm-profile 100 transcode
- B. dspfarmprofile 100 transcode
- C. dspfarm profile 100 transcode
- D. dspfarm 100 profile transcode

Correct Answer: C

Section: (none)

Explanation

Explanation/Reference:

QUESTION 25

Which parameter is required on MCU for ad hoc conferencing?

- A. Media Port reservation
- B. incoming calls to unknown conferences or auto-attendants
- C. DSP reservation for video
- D. MCU type
- E. MCU Conference Bridge SIP Port

Correct Answer: A

Section: (none)

Explanation

Explanation/Reference:

QUESTION 26

Which three steps must you take on Cisco Unified Communications Manager to configure Cisco TelePresence Conductor for ad hoc and rendezvous conferences? (Choose three.)

- A. Verify the location configuration.
- B. Verify the certificate trusts.
- C. Configure one ICT trunk to TelePresence Conductor.
- D. Configure one SIP trunk to TelePresence Conductor.
- E. Configure two ICT trunks to TelePresence Conductor.
- F. Configure two SIP trunks to TelePresence Conductor.

Correct Answer: ABF

Section: (none)

Explanation

Explanation/Reference:

QUESTION 27

Which of these methods can be used to implement toll-fraud prevention?

- A. drop conferences when only two attendees remain
- B. block on-net to on-net calls

- C. deploy conferencing resources to only those employees that require the service
- D. drop conferences when no on-net party remains

Correct Answer: D

Section: (none)

Explanation

Explanation/Reference:

QUESTION 28

Which four modes are available on the Cisco TelePresence MCU MSE 8510 to connect to a gatekeeper? (Choose four.)

- A. direct mode
- B. H.225-routed mode
- C. H.265-routed mode
- D. H.245-routed mode
- E. full proxy mode
- F. partial proxy mode

Correct Answer: ABDE

Section: (none)

Explanation

Explanation/Reference:

QUESTION 29

Which DiffServ PHB classification is recommended by Cisco for interactive video traffic?

- A. AF31
- B. CS3
- C. EF
- D. AF41
- E. CS4

Correct Answer: D

Section: (none)

Explanation

Explanation/Reference:

QUESTION 30

Which three descriptions are true? (Choose three.)

- A. The class of service is a parameter that is used for traffic classification and marking at Layer 2.
- B. The IP precedence is a parameter that is used for traffic classification and marking at Layer 2.
- C. The differentiated services code point is a parameter that is used for traffic classification and marking at Layer 2.
- D. The class of service is a parameter that is used for traffic classification and marking at Layer 3.
- E. The IP precedence is a parameter that is used for traffic classification and marking at Layer 3.
- F. The differentiated services code point is a parameter that is used for traffic classification and marking at Layer 3.

Correct Answer: AEF

Section: (none)

Explanation

Explanation/Reference:

QUESTION 31

On what equipment do you configure Layer 2 to Layer 3 QoS mapping?

- A. switch
- B. router
- C. firewall
- D. Cisco Unified Communications Manager
- E. bridge

Correct Answer: B

Section: (none)

Explanation

Explanation/Reference:

QUESTION 32

Which mechanism is often configured on the edges of a network to control the maximum rate of traffic that is sent or received on an interface and to classify the traffic into priority levels or class of service?

- A. routing
- B. shaping
- C. policing
- D. access control
- E. traffic regulation

Correct Answer: C

Section: (none)

Explanation

Explanation/Reference:

QUESTION 33

Which three characteristics of a video stream require the implementation of QoS? (Choose three.)

- A. variable packet rate
- B. constant bandwidth
- C. small packets
- D. high MTU
- E. high packet rate

Correct Answer: ADE

Section: (none)

Explanation

Explanation/Reference:

QUESTION 34

You need to delete an auto-registration Cisco Unified Communications Manager group for a cluster. What should you do?

- A. Remove the Cisco Unified CallManager group devices.
- B. Disable auto-registration settings in the Cisco Unified CallManager group.
- C. Assign a different call group as the auto-registration Cisco Unified CallManager group.
- D. Delete the auto-registration Cisco Unified CallManager group without performing any action.

Correct Answer: C

Section: (none)

Explanation

Explanation/Reference:

QUESTION 35

Which of these determines the Cisco Unified Communications Manager server to which an IP phone registers?

- A. The Cisco Unified Communications Manager group is configured with a Device Pool that designates the primary, secondary, and tertiary servers in the group.
- B. Each IP phone is configured with a Device Pool containing the Cisco Unified Communications Manager group that determines which server the IP phone will use as its primary, secondary, and tertiary server.
- C. Each IP phone is configured with its primary, secondary, and tertiary server.
- D. The Cisco Unified Communications Manager group is configured in the publisher to designate the IP phone groups that will register with the primary, secondary, and tertiary servers in the group.

Correct Answer: B

Section: (none)

Explanation

Explanation/Reference:

QUESTION 36

Which Cisco Unified Communications Manager menu path is used to access the softkey template configuration window?

- A. Device > Device Settings > Softkey Templates
- B. Device Settings > Softkey Templates
- C. IP Phone > Template > Softkey
- D. Device > IP Phone > Template > Softkey

Correct Answer: A

Section: (none)

Explanation

Explanation/Reference:

QUESTION 37

Where is a Local Route Group configuration applied?

- A. In each IP phone
- B. In each device pool
- C. In each location
- D. In each region
- E. In each route list

Correct Answer: B

Section: (none)

Explanation

Explanation/Reference:

QUESTION 38

If no SIP dial rules are configured on an IP phone, at which three points in the collection of digits does a Type A SIP phone send digits to the Cisco Unified Communications Manager? (Choose three.)

- A. when the interdigit timer expires
- B. when the collected digits match a SIP dial rule
- C. when the user presses the Dial softkey
- D. as each digit is collected (it is sent for analysis)
- E. when the user presses the # key

Correct Answer: ACE

Section: (none)

Explanation

Explanation/Reference:

QUESTION 39

Refer to the exhibit.

```
911
9.[2-9]XXXXXX
9.1[2-9]XX[2-9]XXXXXX
9.18[0,6-8][0,6-8]XXXXXXX
9.1900XXXXXXX
9011.!
```

To reach an external number, a user first dials a 9. Which route pattern will be matched if a user dials the toll-free number 18005550123?

- A. 911
- B. 9.[2-9]XXXXXX
- C. 9.1[2-9]XX[2-9]XXXXXX
- D. 9.18[0,6-8][0,6-8]XXXXXXX
- E. 9.1900XXXXXXX
- F. 9011!

Correct Answer: D

Section: (none)

Explanation

Explanation/Reference:

QUESTION 40

If the route patterns 5XXX, 51XX, 513X, and 5134 exist within a call route database, which pattern would be matched if the dialed number was 5124?

- A. 5XXX
- B. 51XX
- C. 513X
- D. 5134

Correct Answer: B

Section: (none)

Explanation

Explanation/Reference:

QUESTION 41

If the route patterns 5XXX, 51XX, 513X and 5134 exist within a call route database, which pattern would be matched if the dialed number was 5324?

- A. 5XXX
- B. 51XX
- C. 513X
- D. 5134

Correct Answer: A

Section: (none)

Explanation

Explanation/Reference:

QUESTION 42

Which two options are resources in a route list that route calls that match a defined route pattern? (Choose two.)

- A. gateways
- B. route groups
- C. virtual machine servers
- D. IP phones

Correct Answer: AB

Section: (none)

Explanation

Explanation/Reference:

QUESTION 43

Which statement about the relationship between gateways and route groups is true?

- A. Each gateway can belong to only one route group and can be listed only once within that route group.

- B. Each gateway can belong to only one route group and can be listed multiple times within that route group.
- C. Each gateway can belong to multiple route groups and can be listed only once within each route group.
- D. Each gateway can belong to multiple route groups and can be listed multiple times within each route group.

Correct Answer: C

Section: (none)

Explanation

Explanation/Reference:

QUESTION 44

Which discard digits instruction removes the access code from a number before passing the number onto an adjacent system?

- A. PreDot
- B. PreAt
- C. NoDigits
- D. Trailing-#

Correct Answer: A

Section: (none)

Explanation

Explanation/Reference:

QUESTION 45

Which discard digits instruction removes all digits prior to the North American Numbering Plan portion of the route pattern?

- A. PreDot
- B. PreAt
- C. Pre
- D. PreNANP

Correct Answer: B

Section: (none)

Explanation

Explanation/Reference:

QUESTION 46

Which two codecs are supported by the Cisco Unified Communications Manager software conferencing media resource? (Choose two.)

- A. G.723
- B. G.729
- C. wideband
- D. GSM
- E. G.711

Correct Answer: CE

Section: (none)

Explanation

Explanation/Reference:

QUESTION 47

Which two of these describe where phone services can appear on an IP phone and who can subscribe to phone services? (Choose two.)

- A. end user
- B. administrator
- C. end user and administrator
- D. Services button
- E. Services and Directories buttons
- F. Services, Directories, and Messages buttons

Correct Answer: CF

Section: (none)

Explanation

Explanation/Reference:

QUESTION 48

Which three Cisco Unified Communications Manager settings can be used to support IP phone services? (Choose three.)

- A. Device Defaults
- B. Enterprise Parameters
- C. IP Phone Service Configuration window

- D. Common Phone Profile
- E. Service Parameters
- F. Phone Configuration window

Correct Answer: BDF

Section: (none)

Explanation

Explanation/Reference:

QUESTION 49

Which groups will have access to the Meet-Me conference numbers that are set to use the <None> partition?

- A. Only users that have the <None> partition assigned in their calling search space will have access to the Meet-Me conference numbers.
- B. All users will have access to the Meet-Me conference numbers.
- C. The <None> partition will prevent all users from accessing the Meet-Me conference numbers.
- D. Any IP phones with their lines configured in the <None> partition will have access to the Meet-Me conference numbers.

Correct Answer: B

Section: (none)

Explanation

Explanation/Reference:

QUESTION 50

Which two of these are required in order for Cisco Unified Communications Manager to support software conferencing? (Choose two.)

- A. The Cisco IP Voice Media Streaming Application needs to be activated on the server running the conferencing service in the cluster.
- B. The service parameter for the Cisco IP Voice Media Streaming Application needs to have Run Flag set to True.
- C. The software conference bridge resource needs to be configured in Cisco Unified Communications Manager.
- D. The Cisco IP Voice Media Streaming Application needs to be activated for all servers in the cluster.
- E. Under the Cisco IP Voice Media Streaming Application parameters, the conference bridge needs to have Run Flag set to True.

Correct Answer: AE

Section: (none)

Explanation

Explanation/Reference:

QUESTION 51

What are two characteristics that are associated with the End User and User account types? (Choose two.)

- A. They cannot use LDAP.
- B. They are used to authorize applications.
- C. They can utilize LDAP.
- D. The Application is associated with the End User and User account types.
- E. They can be listed in a directory.

Correct Answer: CD

Section: (none)

Explanation

Explanation/Reference:

QUESTION 52

What are two characteristics of a Cisco Unified Communications Manager dial plan? (Choose two.)

- A. partitions and calling search spaces
- B. COR
- C. dial peers
- D. voice translation rules
- E. route patterns

Correct Answer: AE

Section: (none)

Explanation

Explanation/Reference:

Ref:- http://www.cisco.com/c/en/us/td/docs/voice_ip_comm/cucm/admin/8_0_2/ccmsys/accm-802-cm/a03ptcss.html & http://www.cisco.com/c/en/us/td/docs/voice_ip_comm/cucm/admin/8_6_1/ccmcf/bccm-861-cm/b03rtpat.html

QUESTION 53

What are two characteristics of a Cisco Unified Communications Manager Express dial plan? (Choose two.)

- A. partitions and calling search spaces
- B. COR

- C. dial peers
- D. voice translation rules
- E. route patterns

Correct Answer: BC

Section: (none)

Explanation

Explanation/Reference:

QUESTION 54

What is the correct path selection for a call that is routed through a Cisco Unified Communications Manager system?

- A. Devices -> Route Group -> Route List -> Route Pattern
- B. Route List -> Route Pattern -> Route Group -> Devices
- C. Route Pattern -> Route List -> Route Group -> Devices
- D. Route Group -> Devices -> Route Pattern -> Route List

Correct Answer: C

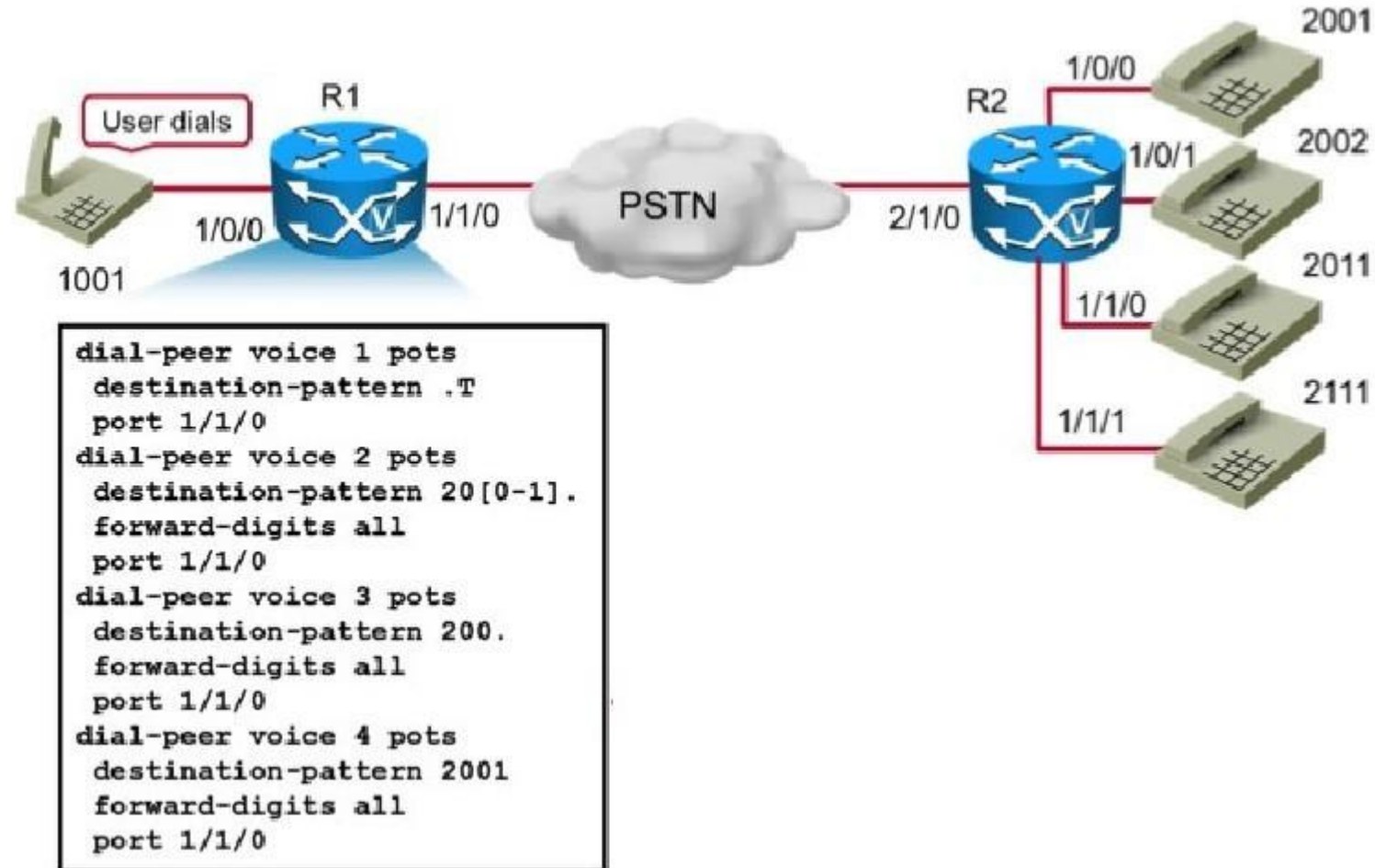
Section: (none)

Explanation

Explanation/Reference:

QUESTION 55

Refer to Exhibit:



If the user at extension 1001 dials the user at extension 2011, which dial peer is used to route the call?

- A. 3
- B. 2
- C. 4
- D. 1

Correct Answer: B

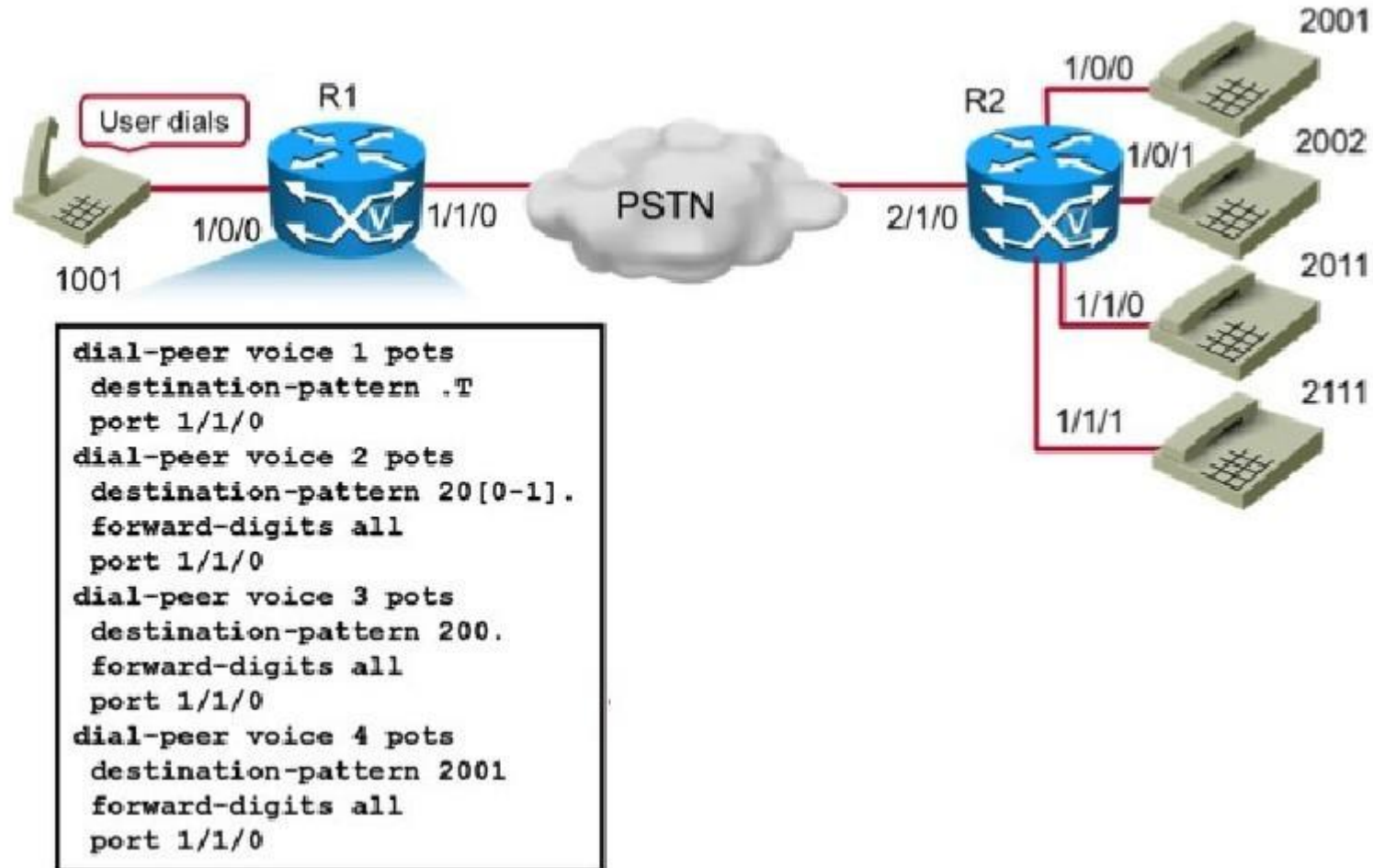
Section: (none)

Explanation

Explanation/Reference:

QUESTION 56

Refer to Exhibit:



If the user at extension 1001 dials the user at extension 2001, which dial peer is used to route the call?

- A. 3
- B. 2
- C. 4
- D. 1

Correct Answer: C

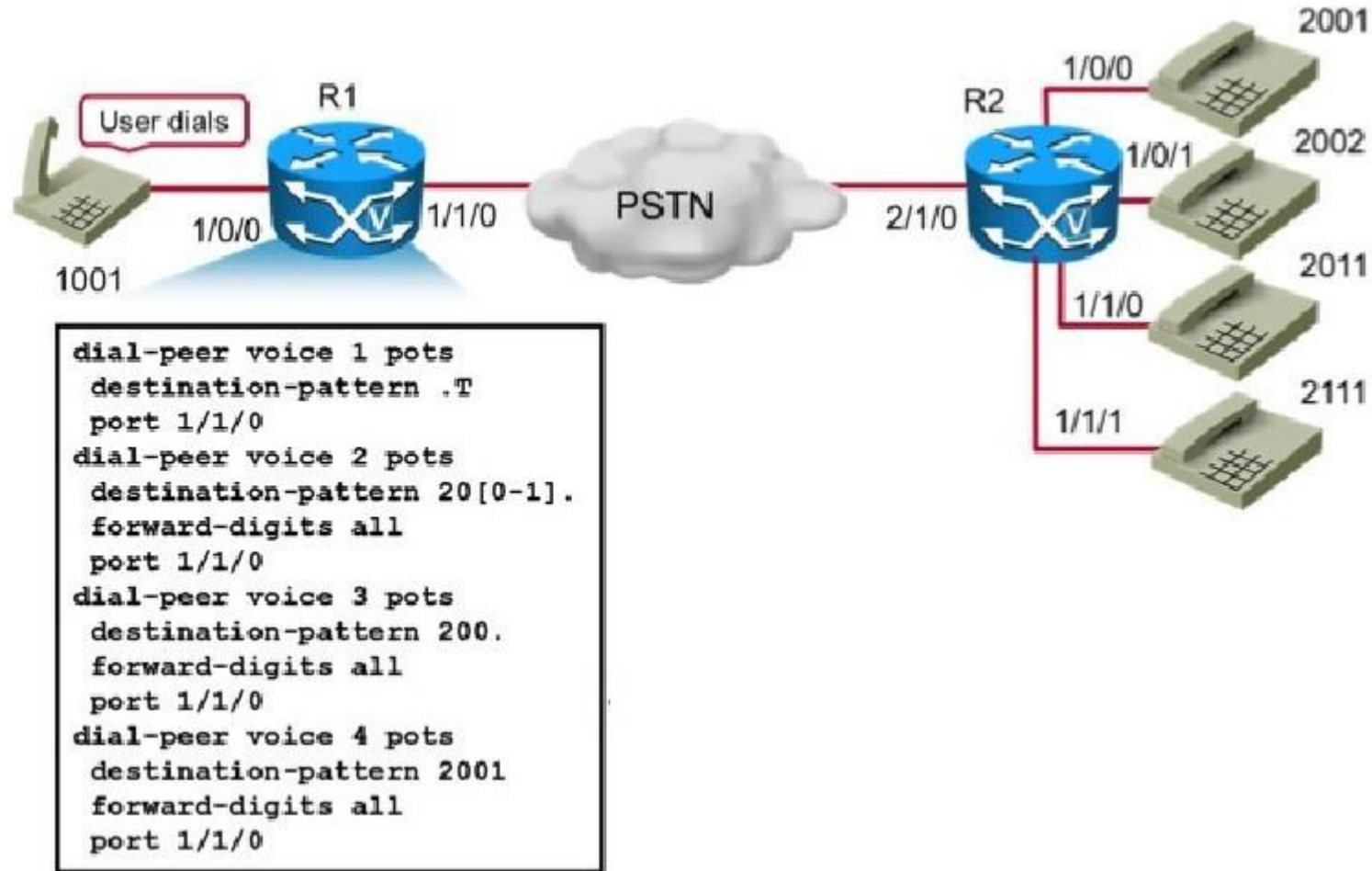
Section: (none)

Explanation

Explanation/Reference:

QUESTION 57

Refer to Exhibit:



If the user at extension 1001 dials the user at extension 2002, which dial peer is used to route the call?

- A. 3
- B. 2
- C. 4
- D. 1

Correct Answer: A

Section: (none)

Explanation

Explanation/Reference:

QUESTION 58

Which type of IOS Conference bridge requires all users to use the same video format in order to participate in a video conference?

- A. Ad Hoc Conferencing
- B. Homogenous Conferencing
- C. Heterogenous Conferencing
- D. Guaranteed Audio Video Conferencing
- E. Meet-Me Conferencing

Correct Answer: B

Section: (none)

Explanation

Explanation/Reference:

Explanation :- A homogenous conference refers to one in which participants connect to the ISR G2 with devices that support the same video format attributes (for example, the same codec, resolution, frame rate, and bit rate).

QUESTION 59

Which two of the following DSPs can be used in heterogenous conferencing to achieve the required trans-sizing and transcoding functionality? (Choose two.)

- A. PVDM3-256
- B. PVDM2-256
- C. PVDM-192
- D. PVDM3-32
- E. PVDM3-192
- F. PVDM2-128

Correct Answer: AE

Section: (none)

Explanation

Explanation/Reference:

Ref:- http://www.cisco.com/c/en/us/td/docs/voice_ip_comm/cucme/feature/guide/Video-trans-conf.html#wp1054669

QUESTION 60

Which of the following simplifies and enhances conference resource management?

- A. Cisco Telepresence Server
- B. Cisco Telepresence MCU
- C. Cisco Telepresence MSE 8000
- D. Cisco IOS routers with packet voice/data module (PVDM)
- E. Cisco Telepresence Conductor

Correct Answer: C

Section: (none)

Explanation

Explanation/Reference:

QUESTION 61

What is the maximum number of 1080p30 HD Conference Participants if an MSE 8000 has four MSE8710 blades clustered?

- A. 48
- B. 180
- C. 720
- D. 800

Correct Answer: A

Section: (none)

Explanation

Explanation/Reference: