

300-070.examcollection.premium.exam.129q

Number: 300-070
Passing Score: 800
Time Limit: 120 min
File Version: 5.0



300-070

Implementing Cisco IP Telephony & Video, Part 1 v1.0

Version 5.0

Exam A**QUESTION 1**

Which route pattern wildcard character is used to terminate the interdigit timeout?

- A. \$
- B. !
- C. #
- D. .

Correct Answer: C

Section: (none)

Explanation

Explanation/Reference:

QUESTION 2

When a call is attempted during a particular time of day, what determines the partitions where calling devices search?

- A. time schedules
- B. calling periods
- C. dial schedules
- D. time periods

Correct Answer: A

Section: (none)

Explanation

Explanation/Reference:

QUESTION 3

When configuring an H.323 gateway, which configuration option can be used to set whether an incoming call is considered off the network (OffNet) or on the network (OnNet)?

- A. call classification
- B. call location
- C. device pool
- D. signaling port

Correct Answer: A

Section: (none)

Explanation

Explanation/Reference:

QUESTION 4

When local route groups are used and a user dials 918005551212, what component is ultimately used to route the digits to the local gateway?

- A. The route list applied to the route pattern
- B. The device pool of the calling device
- C. The translation pattern
- D. The gateway or route list associated with the +.! route pattern

Correct Answer: B

Section: (none)

Explanation

Explanation/Reference:

QUESTION 5

You are performing route pattern configuration. You need to ensure that internal extensions are automatically expanded to full external phone numbers for calling line information on outgoing calls. What should you use?

- A. calling extension expansion
- B. called number expansion
- C. external number mask of the called party
- D. external phone number mask of the calling party

Correct Answer: D

Section: (none)

Explanation

Explanation/Reference:

QUESTION 6

The CSS on a line includes the partitions 911, internal and local. The CSS on the device includes the partitions 911, internal, local and long distance.

Which CSS will be used if the phone user dials a local number?

- A. The device CSS will be used since the device CSS is always used first on an IP phone.
- B. Since the dialed digits are a match to a partition in both Calling Search Spaces the call will use both matched partitions in both Calling Search Spaces in a round-robin format.
- C. If there is both a line and device CSS the line device will only be used.
- D. The line and device CSSs will be combined and the device CSS will take precedence.
- E. The line and device CSSs will be combined and the line CSS will take precedence.

Correct Answer: E

Section: (none)

Explanation

Explanation/Reference:

QUESTION 7

What are two characteristics of a partition? (Choose two.)

- A. Assigned to sources of call routing requests
- B. Any group of numbers with the same reachability
- C. Used in conjunction with calling search spaces to track calls to certain numbers
- D. Used in conjunction with calling search spaces to restrict outgoing calls to certain numbers
- E. Contains calling search spaces

Correct Answer: BD

Section: (none)

Explanation

Explanation/Reference:

QUESTION 8

Which two statements about Cisco VCS Addressing Zones are true? (Choose two.)

- A. They can be local to the Cisco VCS or can be remote.
- B. A zone is a collection of endpoints that share the same dialing behavior and bandwidth settings.
- C. They consist of traversal and nontraversal zones.
- D. They can only be local.

E. They consist of subzones such as DNS zones.

Correct Answer: AB

Section: (none)

Explanation

Explanation/Reference:

QUESTION 9

Which four call coverage features are used by voice gateways? (Choose four.)

- A. call hunt
- B. Call Park
- C. Call Pickup
- D. call redirecting
- E. overlaid phone-dn
- F. basic automatic call distribution
- G. overlaid ephone-dn
- H. basic manual call distribution

Correct Answer: ACFG

Section: (none)

Explanation

Explanation/Reference:

QUESTION 10

Refer to the exhibit.

Translation Pattern Configuration

Save

Status

Status: Ready

Pattern Definition

Translation Pattern

0.001

Partition

< None >

Description

Numbering Plan

EWNP

Route Filter

< None >

MLPP Precedence *

Par défaut

Resource Priority Namespace Network Domain

< None >

Route Class *

Par défaut

Calling Search Space

No restriction

External Call Control Profile

< None >

Route Option

☒ Route this pattern
☐ Block this pattern Aucune erreur

☒ Provide Outside Dial Tone
☐ Urgent Priority
☐ Route Next Hop By Calling Party Number

Route Pattern Configuration

Save

Status

Status: Ready

Pattern Definition

Route Pattern *

0.0044 156789453

Route Partition

< None >

Description

Numbering Plan

-- Not Selected --

Route Filter

< None >

MLPP Precedence *

Par défaut

☐ Apply Call Blocking Percentage

Resource Priority Namespace Network Domain

< None >

Route Class *

Par défaut

Gateway/Route List *

RL_TEST (Edit)

Route Option

☒ Route this pattern
☐ Block this pattern Aucune erreur

Call Classification *

OffNet

☐ Allow Device Override
☒ Provide Outside Dial Tone
☐ Allow Overlap Sending
☐ Urgent Priority
☐ Require Forced Authorization Code

Authorization Level *

0

☐ Require Client Matter Code

When users call number 00044156789453, they have to wait for several seconds before the call is sent. Which action sends the call immediately?

- A. In the translation pattern, change the CSS.
- B. In the route pattern, check the Allow Device Override check box.
- C. In the route pattern, check the Urgent Priority check box.
- D. In the translation pattern, check the Route Next Hop By Calling Party Number check box.

Correct Answer: C

Section: (none)

Explanation

Explanation/Reference:

QUESTION 11

Which three options are valid SIP URI formats? (Choose three.)

- A. jsmith@cisco.com
- B. tel:98765@cisco.com
- C. phone:98765@cisco.com
- D. sip:12345@10.10.10.10:5060;user=phone
- E. sip:bob.cisco.com

Correct Answer: ABD

Section: (none)

Explanation

Explanation/Reference:

QUESTION 12

Which two Cisco products allow the use of a dial plan with E.164, H.323, SIP, and DNS? (Choose two.)

- A. Cisco Expressway
- B. Cisco Unified Communications Manager
- C. Cisco Unified Border Element
- D. Cisco IM and Presence
- E. Cisco TelePresence Video Communication Server

Correct Answer: AE

Section: (none)

Explanation

Explanation/Reference:

QUESTION 13

Refer to the exhibit.

```
911
9.911
9.[2-9]XXXXXX
9.1[2-9]XX[2-9]XXXXXX
9.1800XXXXXXX
9.1866XXXXXXX
9.1877XXXXXXX
9.1888XXXXXXX
9.1900XXXXXXX
9011.!
9011.!#
```

To reach an external number, a user first dials a 9. Which route pattern will be matched if a user dials the toll-free number 18005550123?

- A. 911
- B. 9.[2-9]XXXXXX
- C. 9.1[2-9]XX[2-9]XXXXXX
- D. 9.1800XXXXXXX

- E. 9.1866XXXXXXX
- F. 9.1877XXXXXXX
- G. 9.1888XXXXXXX
- H. 9.1900XXXXXXX
- I. 9011!

Correct Answer: D

Section: (none)

Explanation

Explanation/Reference:

QUESTION 14

Refer to the exhibit.

Route Pattern Configuration		Relate
Save		
Status Status: Ready		
Pattern Definition		
Route Pattern*	9.1900XXXXXXX	
Route Partition	HQ_LD	
Description		
Numbering Plan	-- Not Selected --	
Route Filter	< None >	
MLPP Precedence*	Default	
Resource Priority Namespace Network Domain	< None >	
Route Class*	Default	
Gateway/Route List*	LRG_RL	(Edit)
Route Option	<input type="radio"/> Route this pattern <input checked="" type="radio"/> Block this pattern No Error	
Call Classification*	OffNet	
<input type="checkbox"/> Allow Device Override <input checked="" type="checkbox"/> Provide Outside Dial Tone <input type="checkbox"/> Allow Overlap Sending <input type="checkbox"/> Urgent Priority <input type="checkbox"/> Require Forced Authorization Code		
Authorization Level*	0	
<input type="checkbox"/> Require Client Matter Code		

When a user dials 919005551212, the call fails. Which change do you need to make for this call to be successful?

- A. Change the route partition.
- B. Change the gateway or route list.
- C. Change the route pattern to the correct number of digits.
- D. Change the call classification to OnNet.
- E. Change the route option.

Correct Answer: E

Section: (none)

Explanation

Explanation/Reference:

QUESTION 15

Where do you configure a SIP route pattern?

- A. Call Routing > Route/Hunt > SIP Route Pattern
- B. System > SIP Route Pattern
- C. Call Routing > SIP Route Pattern
- D. Advanced Features > SIP Route Pattern

Correct Answer: C

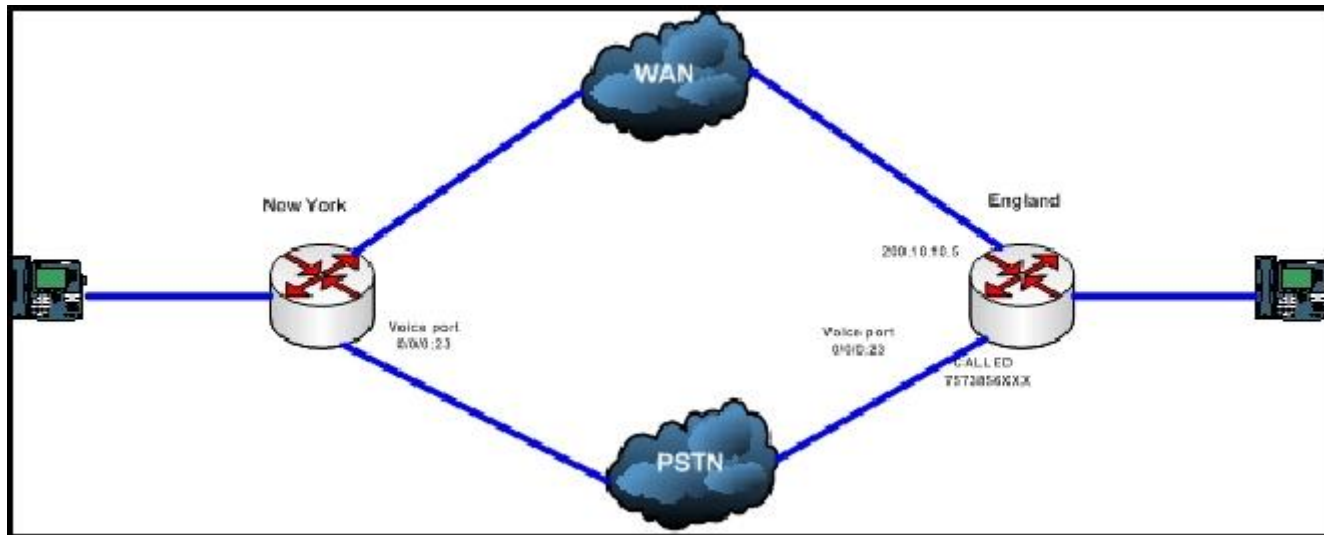
Section: (none)

Explanation

Explanation/Reference:

QUESTION 16

Refer to the exhibit and configuration output.



What are the two main ways from New York to call Extension 6001 in England? (Choose two.)

```
sh run | s Dial-peer
dial-peer voice 2 voip
destination-pattern 6...
preference 0
session-target ipv4: 200.10.10.5
dtmf-relay sip-notify dial-peer voice 3 pots
destination-pattern 6...
preference 1
port 0/0/0:23
prefix 757385
dtmf-relay sip-notify
```

- A. The first way is WAN.
- B. The first way is PSTN.
- C. The second way is WAN.
- D. The second way is PSTN.

Correct Answer: AD

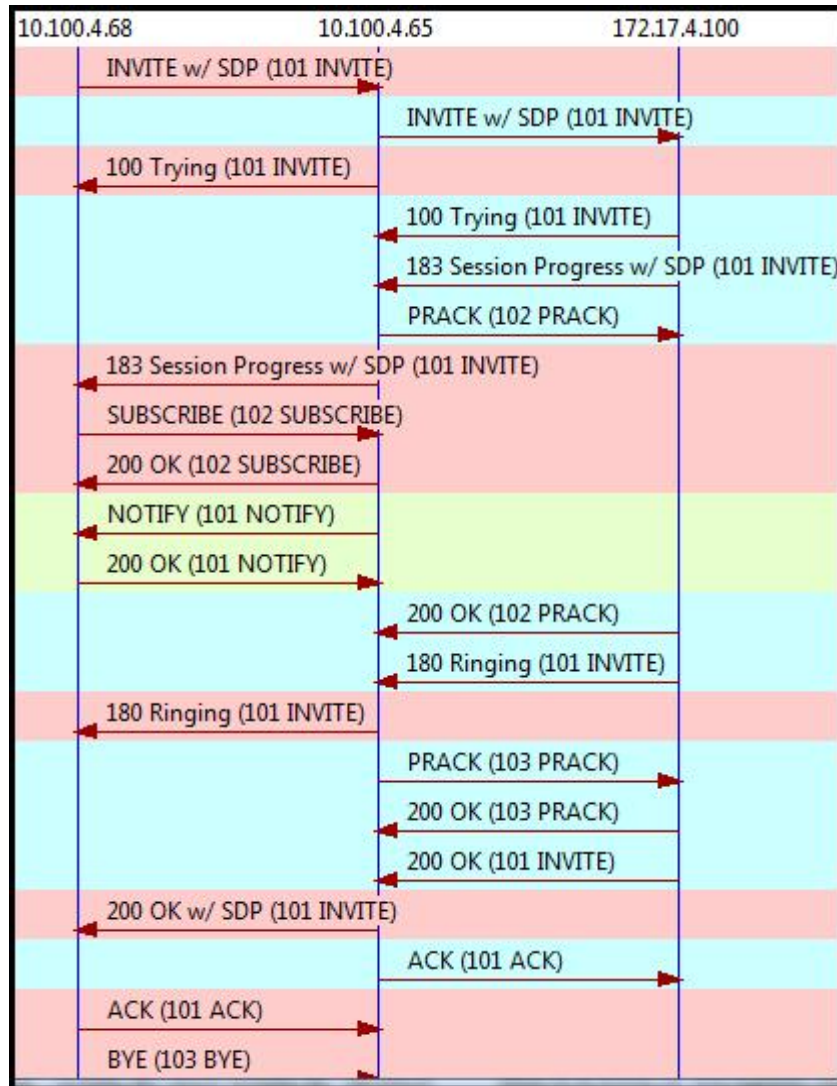
Section: (none)

Explanation

Explanation/Reference:

QUESTION 17

Refer to the exhibit.



Which party has a SIP B2BUA role in the call?

- A. 172.17.4.100
- B. 10.100.4.65 and 172.17.4.100
- C. 10.100.4.65
- D. None of the parties has a B2BUA role in the call.
- E. 10.100.4.68 and 10.100.4.65

Correct Answer: C

Section: (none)

Explanation

Explanation/Reference:

QUESTION 18

Which three commands show the output of an active video call? (Choose three.)

- A. show vrm active_calls
- B. show call active video brief
- C. show voip rtp connections
- D. show voice call
- E. show voice call summary
- F. show video dsp

Correct Answer: BCE

Section: (none)

Explanation

Explanation/Reference:

QUESTION 19

Which two codecs are the best codecs to use in WAN and LAN? (Choose two.)

- A. WAN codec G.711
- B. LAN codec G.729
- C. WAN codec G.729
- D. LAN codec G.711

Correct Answer: CD

Section: (none)

Explanation

Explanation/Reference:

QUESTION 20

Which two codecs are required for Cisco WebEx Enabled TelePresence? (Choose two.)

- A. G.711 codec for audio
- B. H.264 codec for video
- C. G.729 codec for audio
- D. G.711 or G.729 codec for audio
- E. H.263 codec for video
- F. H.264 or H.263 codec for video

Correct Answer: AB

Section: (none)

Explanation

Explanation/Reference:

QUESTION 21

Which configuration output indicates a properly configured T1 digital voice interface?

- A. controller T1 0/0/0
framing esf
linecode b8zs
pri-group timeslots 1-24
!
- B. isdn switch-type primary-ni
!
controller T1 0/0/0
framing esf
linecode b8zs
!
- C. isdn switch-type primary-ni
!