

Untitled Exam

Number: 000-000
Passing Score: 800
Time Limit: 120 min
File Version: 1.0

A

QUESTION 1

Which parameter should be set to prevent H.323 endpoints from registering to Cisco TelePresence Video Communication Server automatically?

- A. On the VCS, navigate to Configuration, Protocols, H.323, and set Auto Discover to off.
- B. On the VCS, navigate to Configuration, Protocols, H.323, and set Auto Registration to off.
- C. On the VCS, navigate to Configuration, Registration, Allow List, and set Auto Registration to off.
- D. On the VCS, navigate to Configuration, Registration, Configuration, and set Auto Registration to off.

Correct Answer: A

Section: (none)

Explanation

Explanation/Reference:

Explanation:

QUESTION 2

Refer to the exhibit.

```
*c xConfiguration Call Loop Detection Mode: "On"  
*c xConfiguration Call Routed Mode: "Always"  
*c xConfiguration Call Services CallsToUnknownIPAddresses: "Direct"  
*c xConfiguration Call Services Fallback Alias:  
*c xConfiguration CollaborationEdge Enabled: Off
```

Which statement is true?

- A. Endpoints can make calls to unknown IP addresses without the VCS querying any neighbors.
- B. If the VCS receives a call to an unknown IP address, it queries its neighbors for the remote address and if permitted, it routes the call through the neighbor.
- C. Endpoints that are registered directly to the VCS can call only an IP address of a system that is also registered directly to that VCS.
- D. Dialing by IP address is not supported on VCS.

Correct Answer: A

Section: (none)

Explanation

Explanation/Reference:

Explanation:

QUESTION 3

A local gateway is registered to Cisco TelePresence Video Communication Server with a prefix of 7. The administrator wants to stop calls from outside the organization being routed through it. Which CPL configuration accomplishes this goal?

"Pass Any Exam. Any Time." - www.actualtests.com 2
Cisco 300-075 Exam

A.

```
<?xml version="1.0" encoding="UTF-8" ?>
<cpl xmlns="urn:ietf:params:xml:ns:cpl"
  xmlns:taa="http://www.tandberg.net/cpl-extensions"
  xmlns:xsi="http://www.w3.org/2001/XMLSchema-instance"
  xsi:schemaLocation="urn:ietf:params:xml:ns:cpl cpl.xsd">
  <taa:routed>
    <taa:rule-switch>
      <taa:rule originating-zone="TraversalZone" destination="7(.*)">
        <i-- External calls are not allowed to use this gateway -->
        <i-- Reject call with a status code of 403 (Forbidden) -->
        <reject status="403" reason="Denied by policy"/>
      </taa:rule>
      <taa:rule origin="(.*)" destination="(.*)">
        <i-- All other calls allowed -->
        <proxy/>
      </taa:rule>
    </taa:rule-switch>
  </taa:routed>
</cpl>
```

B.

```
<?xml version="1.0" encoding="UTF-8" ?>
<cpl xmlns="urn:ietf:params:xml:ns:cpl"
  xmlns:taa="http://www.tandberg.net/cpl-extensions"
  xmlns:xsi="http://www.w3.org/2001/XMLSchema-instance"
  xsi:schemaLocation="urn:ietf:params:xml:ns:cpl cpl.xsd">
  <taa:routed>
    <taa:rule-switch>
      <taa:rule originating-zone="NeighborZone" destination="7(.*)">
        <!-- External calls are not allowed to use this gateway -->
        <!-- Reject call with a status code of 403 (Forbidden) -->
        <reject status="403" reason="Denied by policy"/>
      </taa:rule>
      <taa:rule origin="(.*)" destination="(.*)">
        <!-- All other calls allowed -->
        <proxy/>
      </taa:rule>
    </taa:rule-switch>
  </taa:routed>
</cpl>
```

C. "Pass Any Exam. Any Time." - www.actualtests.com 3
Cisco 300-075 Exam

```
<?xml version="1.0" encoding="UTF-8" ?>
<cpl xmlns="urn:ietf:params:xml:ns:cpl"
  xmlns:taa="http://www.tandberg.net/cpl-extensions"
  xmlns:xsi="http://www.w3.org/2001/XMLSchema-instance"
  xsi:schemaLocation="urn:ietf:params:xml:ns:cpl cpl.xsd">
  <taa:routed>
    <taa:rule-switch>
      <taa:rule originating-zone="TraversalsubZone" destination="7(.*)">
        <!-- External calls are not allowed to use this gateway -->
        <!-- Reject call with a status code of 403 (Forbidden) -->
        <reject status="403" reason="Denied by policy"/>
      </taa:rule>
      <taa:rule origin="(.*)" destination="(.*)">
        <!-- All other calls allowed -->
        <proxy/>
      </taa:rule>
    </taa:rule-switch>
  </taa:routed>
</cpl>
```

D.

```
<?xml version="1.0" encoding="UTF-8" ?>
<cpl xmlns="urn:ietf:params:xml:ns:cpl"
  xmlns:taa="http://www.tandberg.net/cpl-extensions"
  xmlns:xsi="http://www.w3.org/2001/XMLSchema-instance"
  xsi:schemaLocation="urn:ietf:params:xml:ns:cpl cpl.xsd">
  <taa:routed>
    <taa:rule-switch>
      <taa:rule originating-zone="TraversalZone" destination="7(.\\d)">
        <!-- External calls are not allowed to use this gateway -->
        <!-- Reject call with a status code of 403 (Forbidden) -->
        <reject status="403" reason="Denied by policy"/>
      </taa:rule>
      <taa:rule origin="(*)" destination="(*)">
        <!-- All other calls allowed -->
        <proxy/>
      </taa:rule>
    </taa:rule-switch>
  </taa:routed>
</cpl>
```

E.

```
<?xml version="1.0" encoding="UTF-8" ?>
<cpl xmlns="urn:ietf:params:xml:ns:cpl"
  xmlns:taa="http://www.tandberg.net/cpl-extensions"
  xmlns:xsi="http://www.w3.org/2001/XMLSchema-instance"
  xsi:schemaLocation="urn:ietf:params:xml:ns:cpl cpl.xsd">
  <taa:routed>
    <taa:rule-switch>
      <taa:rule originating-zone="TraversalZone" destination="(*)">
        <!-- External calls are not allowed to use this gateway -->
        <!-- Reject call with a status code of 403 (Forbidden) -->
        <reject status="403" reason="Denied by policy"/>
      </taa:rule>
      <taa:rule origin="(*)" destination="(*)">
        <!-- All other calls allowed -->
        <proxy/>
      </taa:rule>
    </taa:rule-switch>
  </taa:routed>
</cpl>
```

"Pass Any Exam. Any Time." - www.actualtests.com 4
Cisco 300-075 Exam

- A. Exhibit A
- B. Exhibit B
- C. Exhibit C
- D. Exhibit D

E. Exhibit E

Correct Answer: A

Section: (none)

Explanation

Explanation/Reference:

Explanation:

QUESTION 4

"Pass Any Exam. Any Time." - www.actualtests.com 7

Cisco 300-075 Exam

Which two statements about configuring mobile and remote access on Cisco TelePresence Video Communication Server Expressway are true? (Choose two.)

- A. The traversal server zone on Expressway-C must have a TLS verify subject name configured.
- B. The traversal client zone and the traversal server zone Media encryption mode must be set to Force encrypted.
- C. The traversal client zone and the traversal server zone Media encryption mode must be set to Auto.
- D. The traversal client zone on Expressway-C Media encryption mode must be set to Auto.
- E. The traversal client zone and the traversal server zone must be set to SIP TLS with TLS verify mode set to On.

Correct Answer: BE

Section: (none)

Explanation

Explanation/Reference:

Explanation:

QUESTION 5

If delegated credentials checking has been enabled and remote workers can register to the VCS Expressway, which statement is true?

"Pass Any Exam. Any Time." - www.actualtests.com 9

Cisco 300-075 Exam

- A. H.323 message credential checks are delegated.
- B. SIP registration proxy mode is set to On in the VCS Expressway.
- C. A secure neighbor zone has been configured between the VCS Expressway and the VCS Control.
- D. SIP registration proxy mode is set to Off in the VCS Expressway.

Correct Answer: D

Section: (none)

Explanation

Explanation/Reference:

Explanation:

QUESTION 6

Which two options should be used to create a secure traversal zone between the Expressway-C and Expressway-E? (Choose two.)

- A. Expressway-C and Expressway-E must trust each other's server certificate.
- B. One Cisco Unified Communications traversal zone for H.323 and SIP connections.
- C. A separate pair of traversal zones must be configured if an H.323 connection is required and Interworking is disabled.
- D. Enable username and password authentication verification on Expressway-E.
- E. Create a set of username and password on each of the Expressway-C and Expressway-E to authenticate the neighboring peer.

Correct Answer: AC

Section: (none)

Explanation

Explanation/Reference:

Explanation:

QUESTION 7

Which two statements regarding you configuring a traversal server and traversal client relationship are true? (Choose two.)

- A. VCS supports only the H.460.18/19 protocol for H.323 traversal calls.
- B. VCS supports either the Assent or the H.460.18/19 protocol for H.323 traversal calls.
- C. VCS supports either the Assent or the H.460.18/19 protocol for SIP traversal calls.
- D. If the Assent protocol is configured, a TCP/TLS connection is established from the traversal client to the traversal server for SIP signaling.
- E. A VCS Expressway located in the public network or DMZ acts as the firewall traversal client.

Correct Answer: BD

Section: (none)

Explanation

Explanation/Reference:

Explanation:

"Pass Any Exam. Any Time." - www.actualtests.com 10
Cisco 300-075 Exam

QUESTION 8

What is the standard Layer 3 DSCP media packet value that should be set for Cisco TelePresence endpoints?

- A. CS3 (24)
- B. EF (46)
- C. AF41 (34)
- D. CS4 (32)

Correct Answer: D

Section: (none)

Explanation

Explanation/Reference:

Explanation:

QUESTION 9

When you configure QoS on VCS, which settings do you apply if traffic through the VCS should be tagged with DSCP AF41?

- A. Set QoS mode to DiffServ and tag value 32.
- B. Set QoS mode to IntServ and tag value to 34.
- C. Set QoS mode to DiffServ and tag value 34.
- D. Set QoS mode to IntServ and tag value to 32.
- E. Set QoS mode to ToS and tag value to 32.

Correct Answer: C

Section: (none)

Explanation

Explanation/Reference:

Explanation:

QUESTION 10

What is the default DSCP/PHB for video conferencing packets in Cisco Unified Communications Manager?

- A. EF/46
- B. CS6/48
- C. AF41/34
- D. CS3/24

Correct Answer: C

Section: (none)

Explanation

Explanation/Reference:

Explanation:

"Pass Any Exam. Any Time." - www.actualtests.com 11
Cisco 300-075 Exam

QUESTION 11

The administrator at Company X is getting user reports of inconsistent quality on video calls between endpoints registered to Cisco Unified Communications Manager. The administrator runs a wire trace while a video call is taking place and sees that the packets are not set to AF41 for desktop video as they should be.

Where should the administrator look next to confirm that the correct DSCP markings are being set?

- A. on the MGCP router at the edge of both networks
- B. the service parameters in the VCS Control
- C. the QoS service parameter in Cisco Unified Communications Manager
- D. on the actual Cisco phone itself because the DSCP setting is not part of its configuration file downloaded at registration
- E. The setting cannot be changed for video endpoints that are registered to Cisco Unified Communications Manager, but only when they are registered to the VCS Control.

Correct Answer: C

Section: (none)

Explanation

Explanation/Reference:

Explanation:

QUESTION 12

Which three commands are necessary to override the default CoS to DSCP mapping on interface Fastethernet0/1? (Choose three.)

- A. `mls qos map cos-dscp 0 10 18 26 34 46 48 56`
- B. `mls qos map dscp-cos 8 10 to 2`
- C. `mls qos`
- D. `interface Fastethernet0/1`
`mls qos trust cos`
- E. `interface Fastethernet0/1`
`mls qos cos 1`
- F. `interface Fastethernet0/2`
`mls qos cos 1`

Correct Answer: ACD

Section: (none)

Explanation

Explanation/Reference:

Explanation:

"Pass Any Exam. Any Time." - www.actualtests.com 12

Cisco 300-075 Exam

QUESTION 13

When video endpoints register with Cisco Unified Communications Manager, where are DSCP values configured?

- A. in Unified CM, under Enterprise Parameters Configuration
- B. in Unified CM, under Device > Device Settings > Device Defaults
- C. in Unified CM, under Service Parameters > Cisco CallManager Service > Cluster-wide Parameters
- D. DSCP parameters are always configured on each individual video endpoint.

Correct Answer: C

Section: (none)

Explanation

Explanation/Reference:

Explanation:

QUESTION 14

Which two options are valid service parameter settings that are used to set up proper video QoS behavior across the Cisco Unified Communications Manager infrastructure? (Choose two.)

- A. DSCP for Video Calls when RSVP Fails
- B. Default Intraregion Min Video Call Bit Rate (Includes Audio)
- C. Default Interregion Max Video Call Bit Rate (Includes Audio)
- D. DSCP for Video Signaling
- E. DSCP for Video Signaling when RSVP Fails

Correct Answer: AC

Section: (none)

Explanation

Explanation/Reference:

Explanation:

QUESTION 15

Which action is performed by the Media Gateway Control Protocol gateway with SRST configured, when it loses connectivity with the primary and backup Cisco Unified Communications Manager servers?

- A. The gateway continues to make an attempt to connect to the backup Cisco Unified Communications Manager server.
- B. The gateway falls back to the H.323 protocol for further call processing.
- C. The gateway continues with the MGCP call processing without any interruption.
- D. The gateway waits for the primary Cisco Unified Communications Manager server to come alive.
- E. All MGCP call processing is interrupted until the Cisco Unified Communications Manager "Pass Any Exam. Any Time." - www.actualtests.com 13 Cisco 300-075 Exam servers are online.
- F. The MGCP calls are queued up until the Cisco Unified Communications Manager servers are online.

Correct Answer: B

Section: (none)

Explanation

Explanation/Reference:

Explanation:

QUESTION 16

Which option is a benefit of implementing CFUR?

- A. CFUR is designed to initiate TEHO to reduce toll charges.
- B. CFUR can prevent phones from unregistering.
- C. CFUR can reroute calls placed to a temporarily unregistered destination phone.
- D. CFUR eliminates the need for COR on an ISR.

Correct Answer: C

Section: (none)

Explanation

Explanation/Reference:

Explanation:

QUESTION 17

Refer to the exhibit.

```
dial-peer voice 901 pots  
destination-pattern 9011T  
port 1/0:23
```

Which configuration change is needed to enable NANP international dialing during MGCP fallback?

- A. Change the dial peer to dial-peer voice 901 voip.
- B. Change the dial peer to dial-peer voice 9011 pots.
- C. Add the command prefix 011 to the dial peer.
- D. Add the command prefix 9011 to the dial peer.

Correct Answer: C

Section: (none)

Explanation

Explanation/Reference:

Explanation:

"Pass Any Exam. Any Time." - www.actualtests.com 14
Cisco 300-075 Exam

QUESTION 18

Which command is needed to utilize local dial peers on an MGCP-controlled ISR during an SRST failover?

- A. ccm-manager fallback-mgcp
- B. telephony-service
- C. dialplan-pattern
- D. isdn overlap-receiving
- E. voice-translation-rule

Correct Answer: A

Section: (none)

Explanation

Explanation/Reference:

Explanation:

QUESTION 19

Which three commands are mandatory to implement SRST for five Cisco IP Phones? (Choose three.)

- A. call-manager-fallback
- B. max-ephones
- C. keepalive
- D. limit-dn
- E. ip source-address

Correct Answer: ABE

Section: (none)

Explanation

Explanation/Reference:

Explanation:

QUESTION 20

Which commands are needed to configure Cisco Unified Communications Manager Express in SRST mode?

- A. telephony-service and srst mode
 - B. telephony-service and moh
 - C. call-manager-fallback and srst mode
 - D. call-manager-fallback and voice-translation
- "Pass Any Exam. Any Time." - www.actualtests.com 15
Cisco 300-075 Exam

Correct Answer: A

Section: (none)

Explanation

Explanation/Reference:

Explanation:

QUESTION 21

You need to verify if the Media Gateway Control Protocol gateway is enabled and active. Which command should you use for this purpose?

- A. show running-config
- B. show fallback-mgcp
- C. show gateway
- D. show ccm-manager fallback-mgcp
- E. show running-config gateway

F. show fallback-mgcp ccm-manager

Correct Answer: D

Section: (none)

Explanation

Explanation/Reference:

Explanation:

QUESTION 22

You want to perform Media Gateway Control Protocol gateway maintenance. For this purpose, you disable Media Control Gateway Protocol gateway using the no mgcp command. After you perform the maintenance, you want to enable the Media Control Gateway Protocol gateway.

Which command should you use?

- A. enable mgcp
- B. mgcp
- C. mgcp enable
- D. mgcp yes
- E. activate mgcp
- F. mgcp active

Correct Answer: B

Section: (none)

Explanation

Explanation/Reference:

Explanation:

QUESTION 23

Which command displays the detailed configuration of all the Cisco Unified IP phones, voice ports,

"Pass Any Exam. Any Time." - www.actualtests.com 16

Cisco 300-075 Exam

and dial peers of the Cisco Unified SRST router?

- A. show call-manager-fallback all
- B. show dial-peer voice summary
- C. show ephone summary
- D. show voice port summary

Correct Answer: A

Section: (none)

Explanation

Explanation/Reference:

Explanation:

QUESTION 24

How many active gatekeepers can you define in a local zone?

- A. 1
- B. 2
- C. 5
- D. 10
- E. 15
- F. unlimited

Correct Answer: A

Section: (none)

Explanation

Explanation/Reference:

Explanation:

QUESTION 25

Which gateway does the Cisco Unified Communications Manager control all call activity?

- A. SIP
- B. MGCP
- C. H.323
- D. Media

Correct Answer: B

Section: (none)

Explanation

Explanation/Reference:

Explanation:

QUESTION 26

"Pass Any Exam. Any Time." - www.actualtests.com 17

Cisco 300-075 Exam

Which two options should be selected in the SIP trunk security profile that affect the SIP trunk pointing to the VCS? (Choose two.)

- A. Accept Unsolicited Notification
- B. Enable Application Level Authorization
- C. Accept Out-of-Dialog REFER
- D. Accept Replaces Header
- E. Accept Presence Subscription

Correct Answer: AD

Section: (none)

Explanation

Explanation/Reference:

Explanation:

QUESTION 27

Company X has a Cisco Unified Communications Manager cluster and a VCS Control server with video endpoints registered on both systems. Users find that video endpoints registered on Call manager can call each other and likewise for the endpoints registered on the VCS server. The administrator for Company X realizes he needs a SIP trunk between the two systems for any video endpoint to call any other video endpoint. Which two steps must the administrator take to add the SIP trunk? (Choose two.)

- A. Set up a SIP trunk on Cisco UCM with the option Device-Trunk with destination address of the VCS server.
- B. Set up a subzone on Cisco UCM with the peer address to the VCS cluster.
- C. Set up a neighbor zone on the VCS server with the location of Cisco UCM using the menu option VCS Configuration > Zones > zone.
- D. Set up a SIP trunk on the VCS server with the destination address of the Cisco UCM and Transport set to TCP.
- E. Set up a traversal subzone on the VCS server to allow endpoints that are registered on Cisco UCM to communicate.

Correct Answer: AC

Section: (none)

Explanation

Explanation/Reference:

Explanation:

QUESTION 28

Which sign is prefixed to the number in global call routing?

- A. -
- B. +
"Pass Any Exam. Any Time." - www.actualtests.com 18
Cisco 300-075 Exam
- C. #
- D. @
- E. &
- F. *

Correct Answer: B

Section: (none)

Explanation

Explanation/Reference:

Explanation:

QUESTION 29

Which statement about the function of the "+" symbol in the E.164 format is true?

- A. The "+" symbol represents the international country code.
- B. The "+" symbol represents the international call prefix.
- C. The "+" symbol matches the preceding element one or more times.
- D. The "+" symbol matches the preceding element zero or one time.

Correct Answer: B

Section: (none)

Explanation

Explanation/Reference:

Explanation:

QUESTION 30

What is an advantage of TEHO?

- A. TEHO implemented with ISRs eliminates PSTN toll charges.
- B. TEHO implemented with ISRs can reduce PSTN toll charges.
- C. TEHO implemented with AAR reduces toll charges.
- D. TEHO implemented with CFUR reroutes calls.

Correct Answer: B

Section: (none)

Explanation

Explanation/Reference:

Explanation:

QUESTION 31

In a node-specific Service Advertisement Framework forwarder deployment model, what is the maximum number of Service Advertisement Framework forwarders that you can assign to a specific node?

"Pass Any Exam. Any Time." - www.actualtests.com 19
Cisco 300-075 Exam

- A. 1
- B. 2
- C. 3
- D. 4
- E. 5
- F. 6

Correct Answer: B

Section: (none)

Explanation

Explanation/Reference:

Explanation:

QUESTION 32

Which statement is true regarding the configuration of SAF Forwarder?

- A. In a multisite dial plan, SAF Forwarders may exist in multiple autonomous systems.
- B. The client label that is configured in Cisco Unified Communications Manager must match the configuration on the SAF Forwarder router.
- C. There should not be multiple nodes of Cisco Unified Communications Manager clusters acting as SAF clients.
- D. The destination IP address must match the loopback address of the SAF router.

Correct Answer: A

Section: (none)

Explanation

Explanation/Reference:

Explanation:

QUESTION 33

Which three devices support the SAF Call Control Discovery protocol? (Choose three.)

- A. Cisco Unified Border Element
- B. Cisco Unity Connection
- C. Cisco IOS Gatekeeper
- D. Cisco Catalyst Switch
- E. Cisco IOS Gateway
- F. Cisco Unified Communications Manager

Correct Answer: AEF

Section: (none)

Explanation

Explanation/Reference:

Explanation:

"Pass Any Exam. Any Time." - www.actualtests.com 20
Cisco 300-075 Exam

QUESTION 34

Which component of Cisco Unified Communications Manager is responsible for sending keepalive messages to the Service Advertisement Framework forwarder?

- A. Call Control Discovery requesting service
- B. Hosted DN's service
- C. Service Advertisement Framework client control
- D. Cisco Unified Communications Manager database
- E. Service Advertisement Framework-enabled trunk
- F. gatekeeper

Correct Answer: C

Section: (none)

Explanation

Explanation/Reference:

Explanation:

QUESTION 35

Which component is needed to set up SAF CCD?

- A. SAF-enabled H.323 intercluster (gatekeeper controlled) trunk
- B. SAF forwarders on Cisco routers
- C. Cisco Unified Communications cluster
- D. SAF-enabled H.225 trunk

Correct Answer: B

Section: (none)

Explanation

Explanation/Reference:

Explanation:

QUESTION 36

Which statement about the host portion format in Cisco Unified Communications Manager URI dialing is false?

- A. The host portion cannot start or end with a hyphen.
- B. The host portion is not case sensitive.
- C. The host portion accepts characters a-z, A-Z, 0-9, hyphens, and periods.
- D. The host portion can have two periods in a row.

Correct Answer: D

Section: (none)

Explanation

Explanation/Reference:

Explanation:

"Pass Any Exam. Any Time." - www.actualtests.com 21
Cisco 300-075 Exam

QUESTION 37

Which statement about setting up FindMe in Cisco TelePresence Video Communication Server is true?

- A. Users are allowed to delete or change the address of their principal devices.
- B. Endpoints should register with an alias that is the same as an existing FindMe ID.
- C. If VCS is using Cisco TMS provisioning, users manage their FindMe accounts via VCS.
- D. A VCS cluster name must be configured.

Correct Answer: D

Section: (none)

Explanation

Explanation/Reference:

Explanation:

QUESTION 38

Which feature allows you to specify which endpoints ring when someone calls a user on a specific destination ID?

- A. FindME
- B. Extension Mobility
- C. Speech Connect
- D. Single Number Reach

Correct Answer: A

Section: (none)

Explanation

Explanation/Reference:

Explanation:

QUESTION 39

Which action configures phones in site A to use G.711 to site B, but uses G.729 to site C?

- A. Configure Cisco Unified Communications Manager regions.
- B. Configure Cisco Unified Communications Manager locations.
- C. Configure transcoder resources in Cisco Unified Communications Manager.
- D. Configure a gatekeeper.

"Pass Any Exam. Any Time." - www.actualtests.com 23

Cisco 300-075 Exam

Correct Answer: A

Section: (none)

Explanation

Explanation/Reference:

Explanation:

QUESTION 40

Which system configuration is used to set audio codecs?

- A. region
- B. location
- C. physical location
- D. licensing

Correct Answer: A

Section: (none)

Explanation

Explanation/Reference:

Explanation:

QUESTION 41

Which task must you perform before deleting a transcoder?

- A. Delete the dependency records.
- B. Unassign it from a media resource group.
- C. Use the Reset option.
- D. Remove the device pool.
- E. Remove the subunit.
- F. Delete the common device configuration.

Correct Answer: B

Section: (none)

Explanation

Explanation/Reference:

Explanation:

QUESTION 42

A voicemail product that supports only the G.711 codec is installed in headquarters. Which action allows branch Cisco IP phones to function with voicemail while using only the G.729 codec over the WAN link to headquarters?

- A. Configure Cisco Unified Communications Manager regions.
- B. Configure transcoding within Cisco Unified Communications Manager.
- C. Configure transcoding resources in Cisco IOS and assign to the MRGL of Cisco IP phones.
"Pass Any Exam. Any Time." - www.actualtests.com 24
Cisco 300-075 Exam
- D. Configure transcoder resources in the branch Cisco IP phones.

Correct Answer: C

Section: (none)

Explanation

Explanation/Reference:

Explanation:

QUESTION 43

Which system configuration is used to set a restriction on audio bandwidth?

- A. region
- B. location
- C. physical location
- D. licensing

Correct Answer: B

Section: (none)

Explanation

Explanation/Reference:

Explanation:

QUESTION 44

The network administrator of Enterprise X receives reports that at peak hours, some calls between remote offices are not passing through. Investigation shows no connectivity problems. The network administrator wants to estimate the volume of calls being affected by this issue.

Which two RTMT counters can give more information on this? (Choose two.)

- A. CallsRingNoAnswer
- B. OutOfResources
- C. LocationOutOfResources
- D. RequestsThrottled
- E. CallsAttempted

Correct Answer: BC

Section: (none)

Explanation

Explanation/Reference:

Explanation:

QUESTION 45

The network administrator has been investigating bandwidth issues between the central office and remote sites where location-based CAC is implemented. What does the Cisco Unified

"Pass Any Exam. Any Time." - www.actualtests.com 25

Cisco 300-075 Exam

Communications Manager "LocationOutOfResources" counter indicate?

- A. This counter represents the total number of times that a call on a particular Cisco Unified Communications Manager through the location failed due to lack of bandwidth.
- B. This counter represents the total number of times that a call through locations failed due to the lack of bandwidth.
- C. This counter represents the total number of failed video-stream requests (most likely due to lack of bandwidth) in the location where the person who initiated the video conference resides.
- D. This counter represents the total number of times since the last restart of the Cisco IP Voice Streaming Application that a Cisco Unified Communications Manager connection was lost.

Correct Answer: B

Section: (none)

Explanation

Explanation/Reference:

Explanation:

QUESTION 46

Scenario:

There are two call control systems in this item.

The Cisco UCM is controlling the DX650, the Cisco Jabber for Windows Client, and the 9971 Video IP Phone.

The Cisco VCS is controlling the SX20, the Cisco TelePresence MCU, and the Cisco Jabber TelePresence for Windows.

SX20 System information:

System Information

General

Product:	Cisco TelePresence SX20
Last boot:	Last Wednesday at 21:43
Serial number:	ABCD12345678
Software version:	TC7.3.0
Installed options:	PremiumResolution
System name:	MySystem
IPv4:	192.168.1.120
IPv6:	2001:DB8:1001:2002:3003:4004:5005:F00F
MAC address:	01:23:45:67:89:AB
Temperature:	58.5°C / 137.3°F

H323

Status:	Registered
Gatekeeper:	192.168.1.1
Number:	123456
ID:	firstname.lastname@company.com

SIP Proxy 1

Status:	Registered
Proxy:	192.168.1.2
URI:	firstname.lastname@company.com

DX650 Configuration:

"Pass Any Exam. Any Time." - www.actualtests.com 26
Cisco 300-075 Exam

DX650 Configuration

Modify Button Items

1

Line [1] - 3304 in Devices

2

Line [2] - Add a new DN

3

Redial

4

3

4

5

6

7

8

9

10

11

12

13

14

15

16

Product Type: Cisco DX650

Device Protocol: SIP

Real-time Device Status

Registration: Unregistered

IPv4 Address: 172.18.32.119

Active Load ID: sipdx650.10-2-3-26

Inactive Load ID: sipdx650.10-1-1-78

Download Status: None

Device Information

Device is Active

Device is trusted

MAC Address*

D0C78914131D

Description

DX650 Pod 3

Device Pool*

Default

Common Device Configuration

< None >

Phone Button Template*

Cisco DX650 SIP

Softkey Template

< None >

Common Phone Profile*

Standard Common Phone Profile

Calling Search Space

All-Devices

AAR Calling Search Space

< None >

MRGL:

www.vceplus.com - Download A+ VCE (latest) free Open VCE Exams - VCE to PDF Converter - VCE Exam Simulator - VCE Online - IT Certifications

MRGL

Status



1 records found

Media Resource Group List (1 - 1 of 1)

Find Media Resource Group List where Name begins with

Find

Clear Filter



Name



[MRGL-All](#)

Add New

Select All

Clear All

Delete Selected

DP:

DP

Status



3 records found

Device Pool (1 - 3 of 3)

Find Device Pool where Device Pool Name begins with

Find

Clear Filter



Name

Qsco Unified CM Group

Region

Date



[Default1](#)

[Default](#)

[GSM](#)

[Default](#)

[Default](#)

[Default](#)

[Default](#)

[Default](#)

[GSM](#)

[CMLocal](#)

[CMLocal](#)

[CMLocal](#)

Add New

Select All

Clear All

Delete Selected

Locations:

"Pass Any Exam. Any Time." - www.actualtests.com 27
Cisco 300-075 Exam

Locations

Locations (1 - 3 of 3)

Find Locations where Location begins with Find Clear Filter + -

<input type="checkbox"/>	
<input type="checkbox"/>	Hub_None
<input type="checkbox"/>	Phantom
<input type="checkbox"/>	Shadow

Add New
Select All
Clear All
Delete Selected

AARG:

AARG

Automated Alternate Routing Group

Find Automated Alternate Routing Group where Name begins with Find Clear Filter + -

No active query. Please enter your search criteria using the options above.

CSS:

CSS

Calling Search Space (1 - 2 of 2)

Find Calling Search Space where: CSS Name ▼ begins with ▼ Find Clear Filter + -

<input type="checkbox"/>	CSS Name ▲
<input type="checkbox"/>	All Devices
<input type="checkbox"/>	All-Devices

Add New Select All Clear All Delete Selected

Movi Failure:



Movie Settings:

"Pass Any Exam. Any Time." - www.actualtests.com 28
Cisco 300-075 Exam

A new DX650 IP phone with MAC address D0C7.8914.132D, IP address is 172.18.32.119 has been added to the Cisco Unified Communications Manager, but is not registering properly. What is causing this failure?

- A. Device Pool cannot be default.
 - B. The DX650 is the incorrect calling search space.
 - C. The DX650 Phones does not support SIP.
 - D. The location Hub_None has not been activated.
 - E. E. The DX650's MAC address is incorrect in the Cisco UCM.
- "Pass Any Exam. Any Time." - www.actualtests.com 29
Cisco 300-075 Exam

Correct Answer: D

Section: (none)

Explanation

Explanation/Reference:

Explanation:

QUESTION 47

Scenario:

There are two call control systems in this item.

The Cisco UCM is controlling the DX650, the Cisco Jabber for Windows Client, and the 9971 Video IP Phone.

The Cisco VCS is controlling the SX20, the Cisco TelePresence MCU, and the Cisco Jabber TelePresence for Windows.

SX20 System information:

System Information

General

Product:	Cisco TelePresence SX20
Last boot:	Last Wednesday at 21:43
Serial number:	ABCD12345678
Software version:	TC7.3.0
Installed options:	PremiumResolution
System name:	MySystem
IPv4:	192.168.1.120
IPv6:	2001:DB8:1001:2002:3003:4004:5005:F00F
MAC address:	01:23:45:67:89:AB
Temperature:	58.5°C / 137.3°F

H323

Status:	Registered
Gatekeeper:	192.168.1.1
Number:	123456
ID:	firstname.lastname@company.com

SIP Proxy 1

Status:	Registered
Proxy:	192.168.1.2
URI:	firstname.lastname@company.com

DX650 Configuration:

"Pass Any Exam. Any Time." - www.actualtests.com 30
Cisco 300-075 Exam

MRGL:

MRGL

Status



1 records found

Media Resource Group List (1 - 1 of 1)

Find Media Resource Group List where Name begins with

Find

Clear Filter



Name



[MRGL-All](#)

Add New

Select All

Clear All

Delete Selected

DP:

DP

Status



3 records found

Device Pool (1 - 3 of 3)

Find Device Pool where Device Pool Name begins with

Find

Clear Filter



Name

Qsco Unified CM Group

Region

Date



[Default1](#)

[Default](#)

[GSM](#)

[Default](#)

[Default](#)

[Default](#)

[Default](#)

[Default](#)

[GSM](#)

[CMLocal](#)

[CMLocal](#)

[CMLocal](#)

Add New

Select All

Clear All

Delete Selected

Locations:

"Pass Any Exam. Any Time." - www.actualtests.com 31
Cisco 300-075 Exam

Locations

Locations (1 - 3 of 3)

Find Locations where Location begins with

<input type="checkbox"/>	
<input type="checkbox"/>	Hub_None
<input type="checkbox"/>	Phantom
<input type="checkbox"/>	Shadow

AARG:

AARG

Automated Alternate Routing Group

Find Automated Alternate Routing Group where Name begins with

No active query. Please enter your search criteria using the options above.

CSS:

CSS

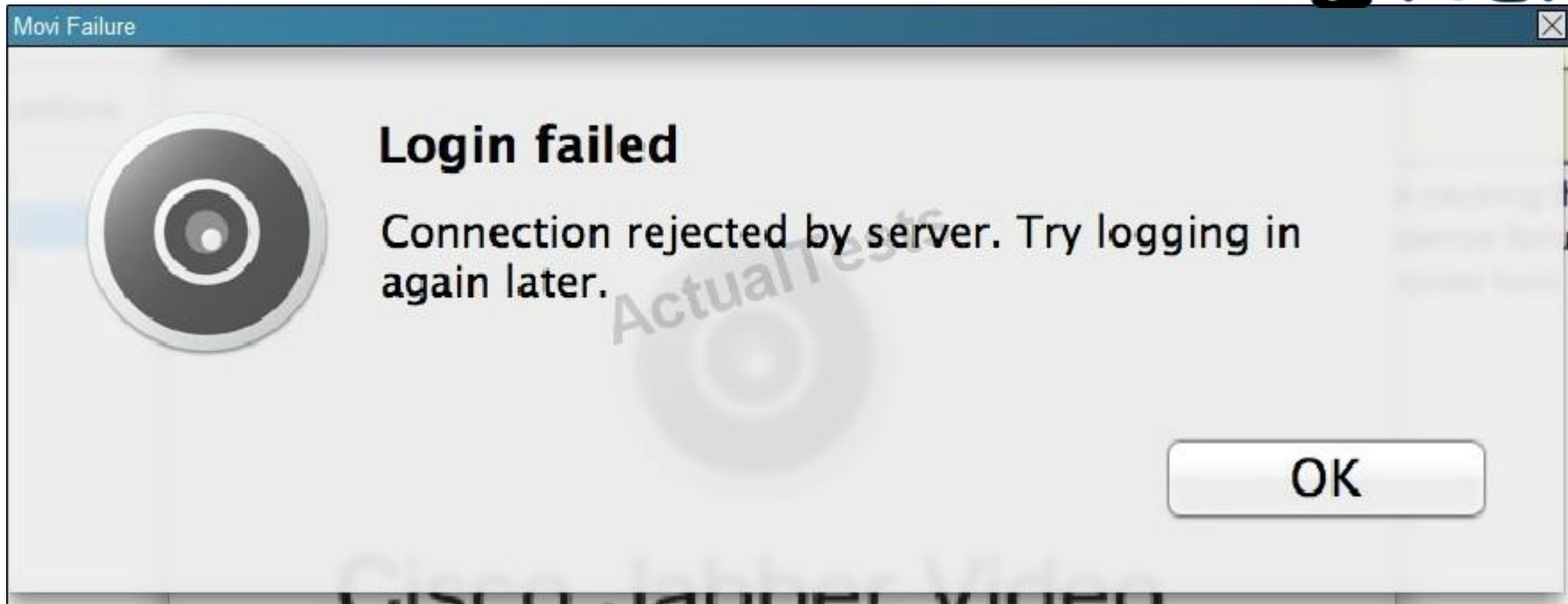
Calling Search Space (1 - 2 of 2)

Find Calling Search Space where: CSS Name ▼ begins with ▼ Find Clear Filter + -

<input type="checkbox"/>	CSS Name ▲
<input type="checkbox"/>	All Devices
<input type="checkbox"/>	All-Devices

Add New Select All Clear All Delete Selected

Movi Failure:



Movie Settings:

"Pass Any Exam. Any Time." - www.actualtests.com 32
Cisco 300-075 Exam

What two issues could be causing the Cisco Jabber Video for TelePresence failure shown in the exhibit? (Choose two)

- A. Incorrect username and password.
 - B. Wrong SIP domain configured.
 - C. User is not associated with the device.
 - D. IP or DNS name resolution issue.
 - E. CSF Device is not registered.
 - F. IP Phone DN not associated with the user.
- "Pass Any Exam. Any Time." - www.actualtests.com 33
Cisco 300-075 Exam

Correct Answer: BD

Section: (none)

Explanation

Explanation/Reference:

Explanation:

QUESTION 48

Scenario:

There are two call control systems in this item.

The Cisco UCM is controlling the DX650, the Cisco Jabber for Windows Client, and the 9971 Video IP Phone.

The Cisco VCS is controlling the SX20, the Cisco TelePresence MCU, and the Cisco Jabber TelePresence for Windows.

SX20 System information:

System Information

General

Product:	Cisco TelePresence SX20
Last boot:	Last Wednesday at 21:43
Serial number:	ABCD12345678
Software version:	TC7.3.0
Installed options:	PremiumResolution
System name:	MySystem
IPv4:	192.168.1.120
IPv6:	2001:DB8:1001:2002:3003:4004:5005:F00F
MAC address:	01:23:45:67:89:AB
Temperature:	58.5°C / 137.3°F

H323

Status:	Registered
Gatekeeper:	192.168.1.1
Number:	123456
ID:	firstname.lastname@company.com

SIP Proxy 1

Status:	Registered
Proxy:	192.168.1.2
URI:	firstname.lastname@company.com

DX650 Configuration:

"Pass Any Exam. Any Time." - www.actualtests.com 34
Cisco 300-075 Exam

DX650 Configuration

Modify Button Items

1	Line [1] - 3304 in Devices
2	Line [2] - Add a new DN
3	Redial
4	sx20-3@osl226.local
5	Add a new SD
6	Add a new SD
7	Add a new SD
8	Add a new SD
9	Add a new SD
10	Add a new SD
11	Add a new SD
12	Add a new SD
13	Add a new SD
14	Add a new SD
15	Add a new SD
----- Unassigned Associated Items -----	
16	Add a new SD

Product Type: Cisco DX650

Device Protocol: SIP

Real-time Device Status

Registration: Unregistered

IPv4 Address: [172.18.32.119](#)

Active Load ID: sipdx650.10-2-3-26

Inactive Load ID: sipdx650.10-1-1-78

Download Status: None

Device Information

☒ Device is Active

☒ Device is trusted

MAC Address*

Description

Device Pool*

Common Device Configuration

Phone Button Template*

Softkey Template

Common Phone Profile*

Calling Search Space

AAR Calling Search Space

MRGL:

MRGL

Status



1 records found

Media Resource Group List (1 - 1 of 1)

Find Media Resource Group List where Name begins with

Find

Clear Filter



Name



[MRGL-All](#)

Add New

Select All

Clear All

Delete Selected

DP:

DP

Status



3 records found

Device Pool (1 - 3 of 3)

Find Device Pool where Device Pool Name begins with

Find

Clear Filter



Name

Qsco Unified CM Group

Region

Date



[Default1](#)

[Default](#)

[GSM](#)

[Default](#)

[Default](#)

[Default](#)

[Default](#)

[Default](#)

[GSM](#)

[CMLocal](#)

[CMLocal](#)

[CMLocal](#)

Add New

Select All

Clear All

Delete Selected

Locations:

"Pass Any Exam. Any Time." - www.actualtests.com 35
Cisco 300-075 Exam

Locations

Locations (1 - 3 of 3)

Find Locations where Location begins with Find Clear Filter

<input type="checkbox"/>	
<input type="checkbox"/>	Hub_None
<input type="checkbox"/>	Phantom
<input type="checkbox"/>	Shadow

AARG:

AARG

Automated Alternate Routing Group

Find Automated Alternate Routing Group where Name begins with Find Clear Filter

No active query. Please enter your search criteria using the options above.

CSS:

CSS

Calling Search Space (1 - 2 of 2)

Find Calling Search Space where: CSS Name ▼ begins with ▼ Find Clear Filter + -

<input type="checkbox"/>	CSS Name ▲
<input type="checkbox"/>	All Devices
<input type="checkbox"/>	All-Devices

Add New Select All Clear All Delete Selected

Movi Failure:



Movie Settings:

"Pass Any Exam. Any Time." - www.actualtests.com 36
Cisco 300-075 Exam

Which device configuration option will allow an administrator to assign a device to specific rights for making calls to specific DN's?

- A. Media Resource Group List
- B. Device Pool
- C. Location
- D. AAR Group
- E. Calling Search Space

"Pass Any Exam. Any Time." - www.actualtests.com 37
Cisco 300-075 Exam

Correct Answer: E

Section: (none)

Explanation

Explanation/Reference:

Explanation:

QUESTION 49

Scenario:

There are two call control systems in this item.

The Cisco UCM is controlling the Cisco Jabber for Windows Client, and the 7965 and 9971 Video IP Phone.

The Cisco VCS is controlling the SX20, the Cisco TelePresence MCU, and the Cisco Jabber TelePresence for Windows.

DP:

Status				
<div> <i>i</i> 3 records found </div>				
Device Pool (1 - 3 of 3)				
Find Device Pool where Device Pool Name <div> begins with Find Clear Filter + - </div>				
<input type="checkbox"/>	Name ^	Cisco Unified CM Group	Region	D
<input type="checkbox"/>	Default	Default	Default	CMLocal
<input type="checkbox"/>	Default	Default	Default	CMLocal
<input type="checkbox"/>	GSM	Default	GSM	CMLocal
<div> Add New Select All Clear All Delete Selected </div>				

Locations:

Locations

Locations (1 - 3 of 3)

Find Locations where Location begins with

<input type="checkbox"/>	
<input type="checkbox"/>	Hub_None
<input type="checkbox"/>	Phantom
<input type="checkbox"/>	Shadow

CSS:

"Pass Any Exam. Any Time." - www.actualtests.com 38
Cisco 300-075 Exam

CSS

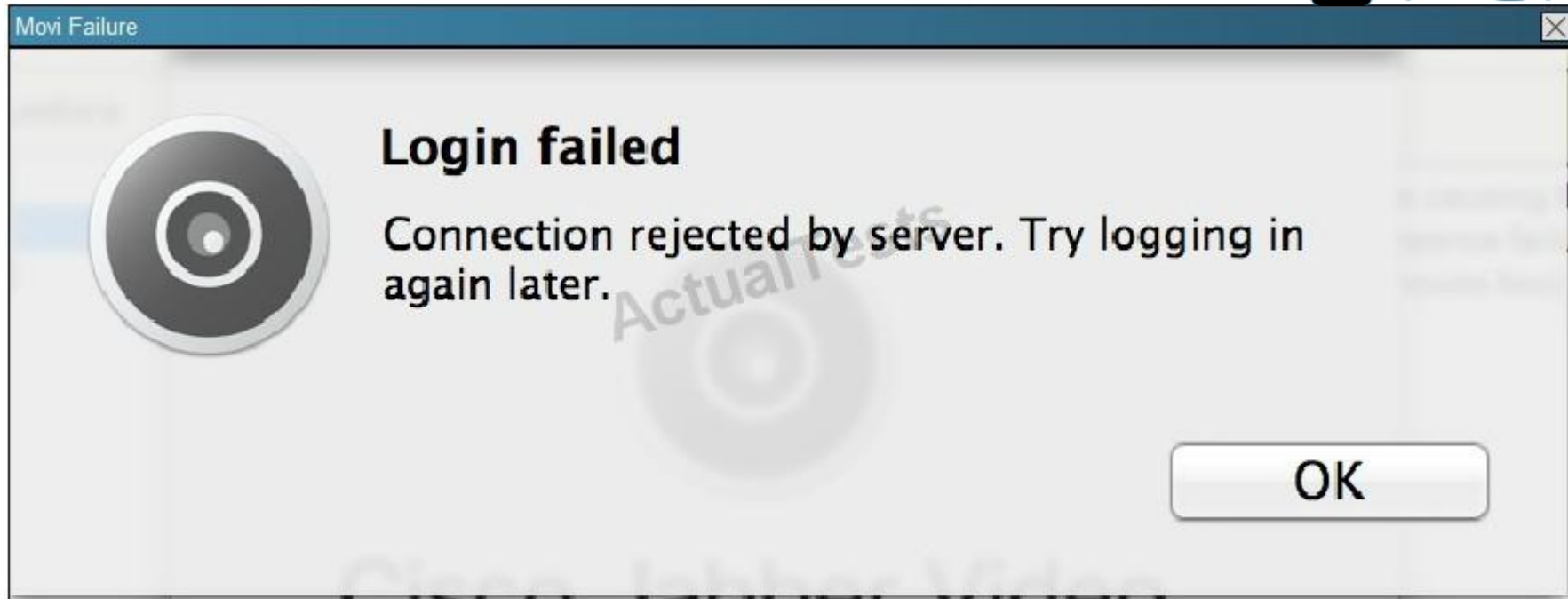
Calling Search Space (1 - 2 of 2)

Find Calling Search Space where: CSS Name ▼ begins with ▼ Find Clear Filter + -

<input type="checkbox"/>	CSS Name ▲
<input type="checkbox"/>	All Devices
<input type="checkbox"/>	All-Devices

Add New Select All Clear All Delete Selected

Movie Failure:



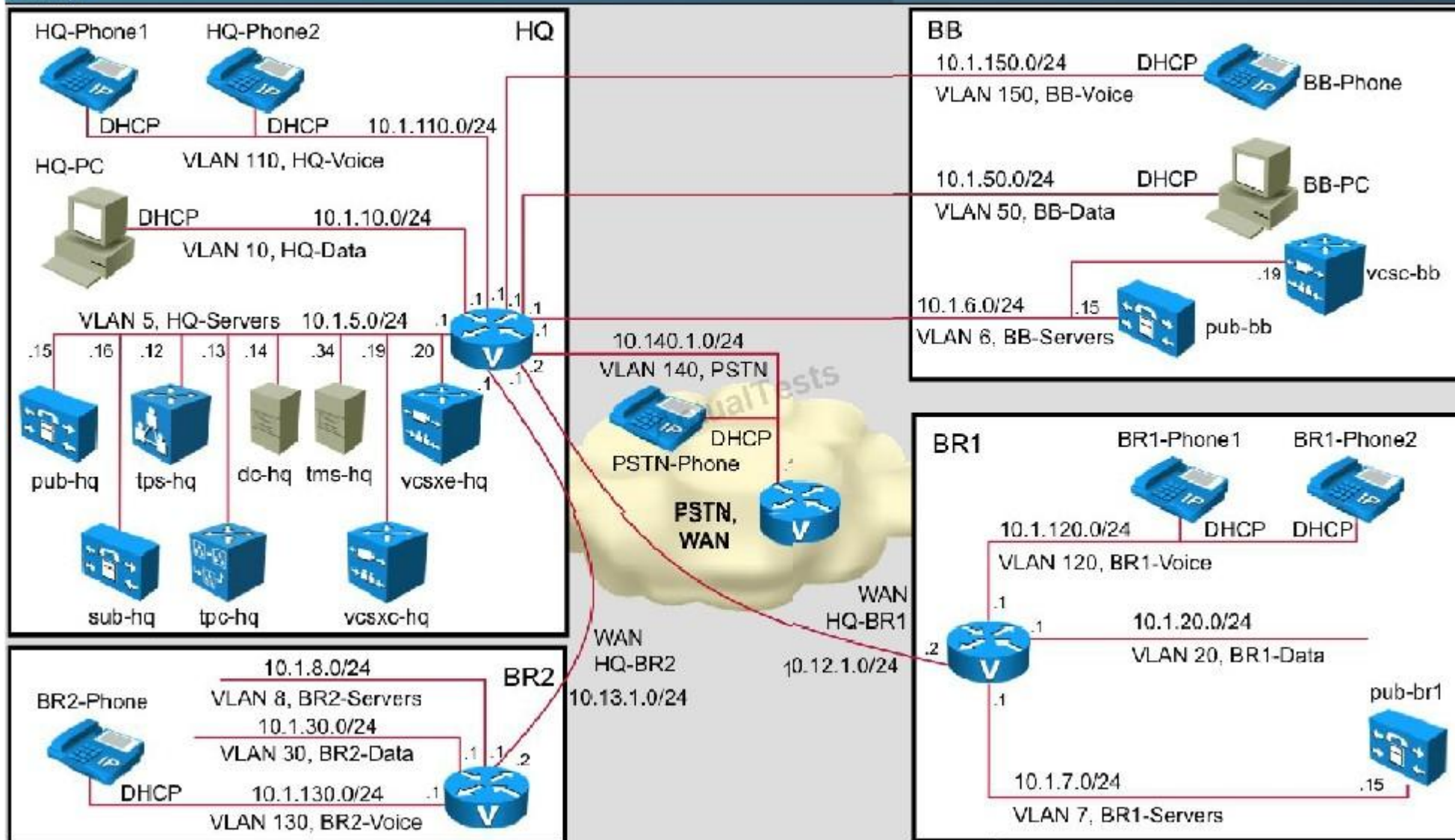
Movie Settings:

"Pass Any Exam. Any Time." - www.actualtests.com 39
Cisco 300-075 Exam

CIPTV2 Topology:

"Pass Any Exam. Any Time." - www.actualtests.com 40
Cisco 300-075 Exam

CPTV? Topo



Subzone:

Subzone

- **Name:** HQ
- **Authentication policy:** Treat as authenticated
- **Total bandwidth available - Bandwidth restriction:** Limited
- **Total bandwidth available - Total bandwidth limit (kbps):** 512
- **Calls into or out of this subzone - Bandwidth restriction:** Limited
 - **Calls into or out of this subzone - Total bandwidth limit (kbps):** 0
 - **Calls entirely within this subzone Bandwidth restriction:** Limited
 - **Calls entirely within this subzone Total bandwidth limit (kbps):** 200

Links:

Links		You are here: Configuration > Bandwidth > Links					
Name ▾	Node 1	Node 2	Pipe 1	Pipe 2	Calls	Bandwidth used	Actions
<input type="checkbox"/> DefaultSZtoClusterSZ	DefaultSubZone	ClusterSubZone			0	0 kbps	View/Edit
<input type="checkbox"/> DefaultSZtoDefaultZ	DefaultSubZone	DefaultZone			0	0 kbps	View/Edit
<input type="checkbox"/> DefaultSZtoTraversalSZ	DefaultSubZone	TraversalSubZone			0	0 kbps	View/Edit
<input type="checkbox"/> SubZone001ToDefaultSZ	HQ	DefaultSubZone			0	0 kbps	View/Edit
<input type="checkbox"/> SubZone001ToTraversalSZ	HQ	TraversalSubZone			0	0 kbps	View/Edit
<input type="checkbox"/> TraversalSZtoDefaultZ	TraversalSubZone	DefaultZone			0	0 kbps	View/Edit
<input type="checkbox"/> YCS_HQ - toHQ	HQ	to HQ	to HQ pipe		1	128 kbps	View/Edit

Pipe:

"Pass Any Exam. Any Time." - www.actualtests.com 41
Cisco 300-075 Exam

Name: to HQ pipe

Total Bandwidth available – Bandwidth restriction: Limited

Total Bandwidth available – Total bandwidth limit (kbps): 256

Calls through this pipe – Bandwidth restriction: Limited

Calls through this pipe – Per call bandwidth limit (kbps): 128

Both of the Cisco TelePresence Video for Windows clients are able to log into the server but can't make any calls. After reviewing the exhibits, which of the following reasons could be causing this failure?

- A. Wrong username and/or password.
- B. Wrong SIP domain name.
- C. The TMSPE is not working.
- D. The bandwidth is incorrectly configured.

Correct Answer: D

Section: (none)

Explanation

Explanation/Reference:

Explanation:

QUESTION 50

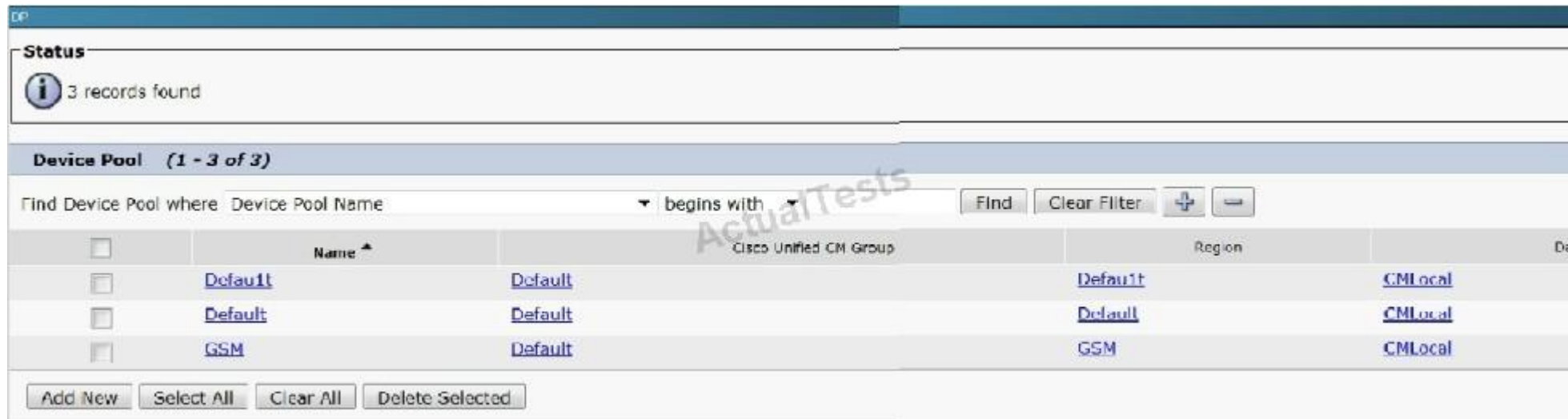
Scenario:

There are two call control systems in this item.

The Cisco UCM is controlling the Cisco Jabber for Windows Client, and the 7965 and 9971 Video IP Phone.

The Cisco VCS is controlling the SX20, the Cisco TelePresence MCU, and the Cisco Jabber TelePresence for Windows

DP:



The screenshot shows the 'Device Pool' configuration page in Cisco Unified CM. It displays a table with three device pools. The table has columns for 'Name', 'Cisco Unified CM Group', 'Region', and 'Device Pool'. The first two rows are 'Default' and the third is 'GSM'. The 'Cisco Unified CM Group' column shows 'Default' for the first two rows and 'GSM' for the third. The 'Region' column shows 'Default' for the first two rows and 'GSM' for the third. The 'Device Pool' column shows 'CMLocal' for all three rows. The table is filtered by 'Device Pool Name' and 'begins with'. The 'Find' button is active. The 'Clear Filter' button is also visible. The 'Add New', 'Select All', 'Clear All', and 'Delete Selected' buttons are at the bottom.

	Name ^	Cisco Unified CM Group	Region	Device Pool
<input type="checkbox"/>	Default	Default	Default	CMLocal
<input type="checkbox"/>	Default	Default	Default	CMLocal
<input type="checkbox"/>	GSM	Default	GSM	CMLocal

"Pass Any Exam. Any Time." - www.actualtests.com 42

Cisco 300-075 Exam

Locations:

Locations

Locations (1 - 3 of 3)

Find Locations where Location begins with

<input type="checkbox"/>	
<input type="checkbox"/>	Hub_None
<input type="checkbox"/>	Phantom
<input type="checkbox"/>	Shadow

CSS:

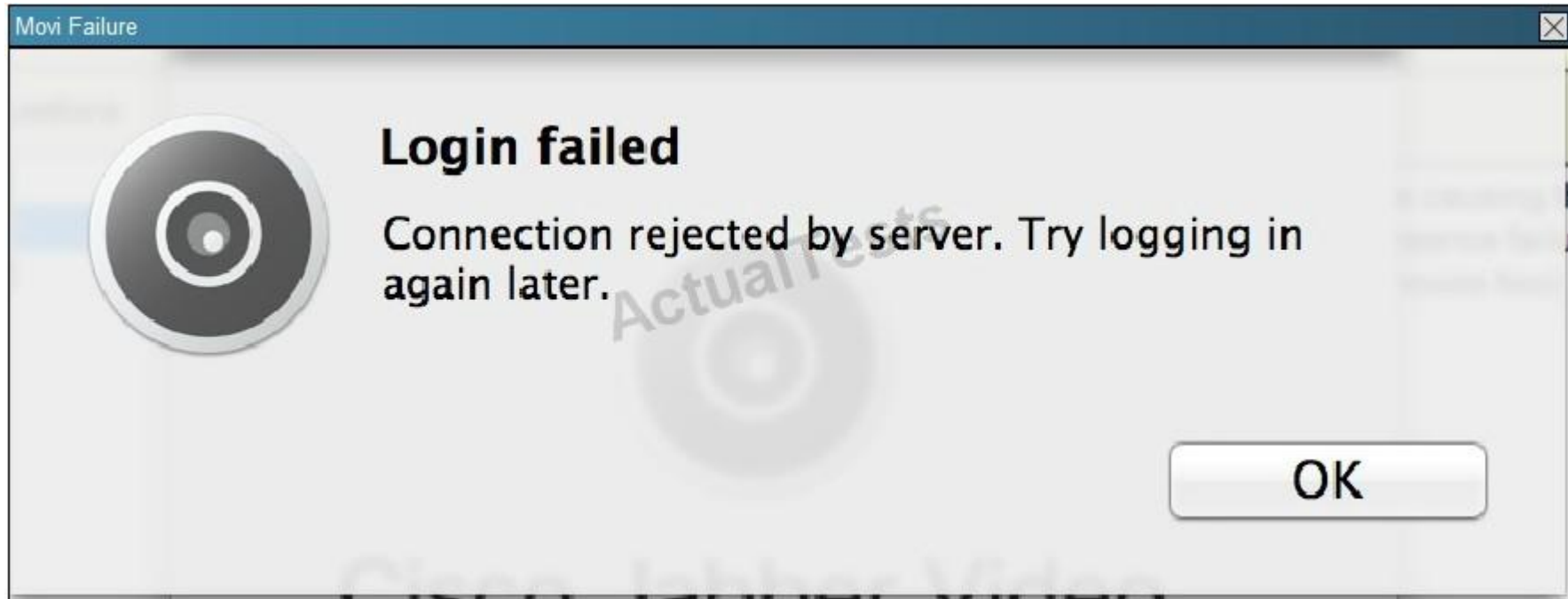
CSS

Calling Search Space (1 - 2 of 2)

Find Calling Search Space where CSS Name begins with

<input type="checkbox"/>		CSS Name ▲
<input type="checkbox"/>	All Devices	
<input type="checkbox"/>	All-Devices	

Movie Failure:



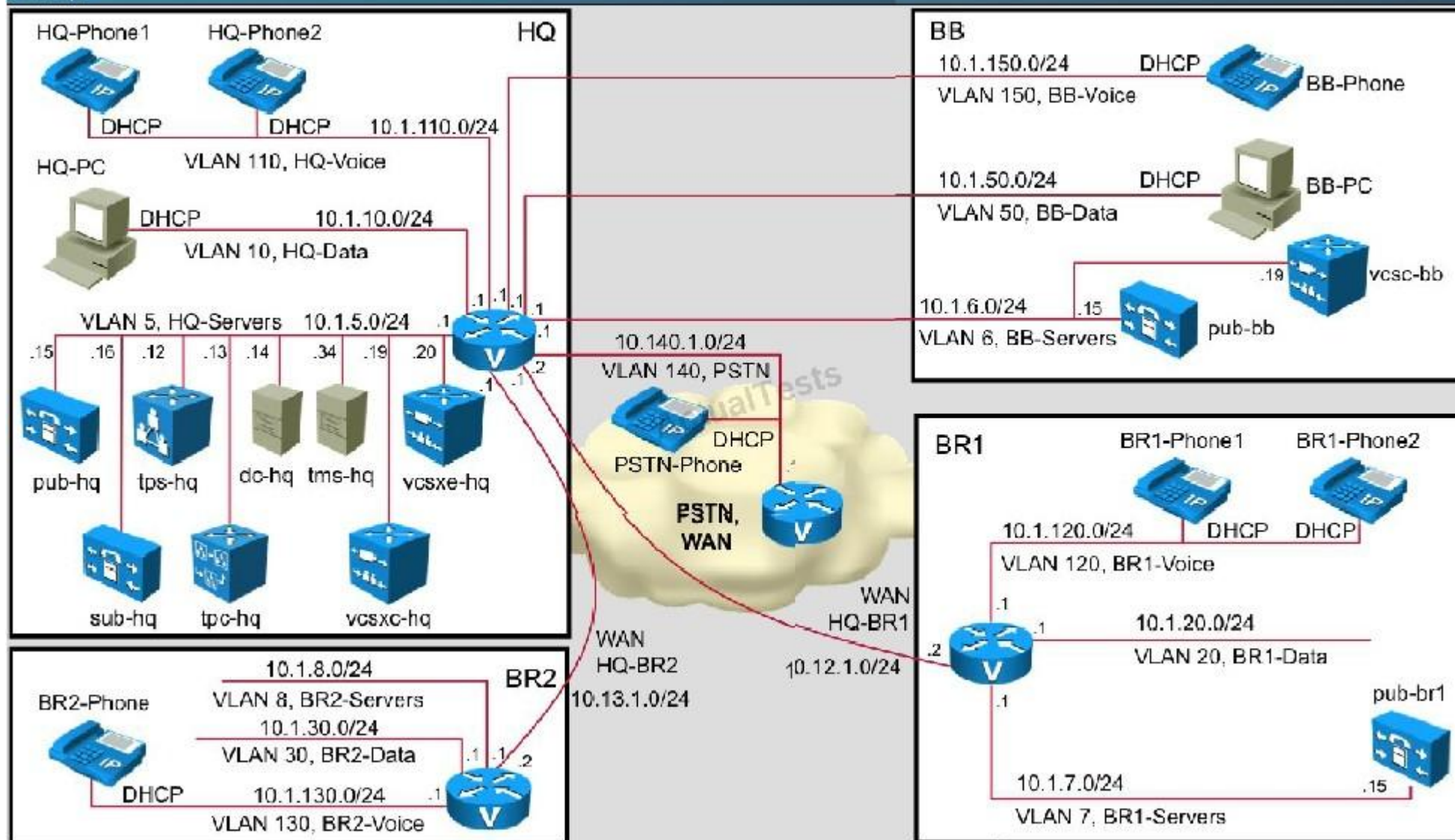
Movie Settings:

"Pass Any Exam. Any Time." - www.actualtests.com 43
Cisco 300-075 Exam

CIPTV2 Topology:

"Pass Any Exam. Any Time." - www.actualtests.com 44
Cisco 300-075 Exam

CPTV? Topo



Subzone:

Subzone

- **Name:** HQ
- **Authentication policy:** Treat as authenticated
- **Total bandwidth available - Bandwidth restriction:** Limited
- **Total bandwidth available - Total bandwidth limit (kbps):** 512
- **Calls into or out of this subzone - Bandwidth restriction:** Limited
 - **Calls into or out of this subzone - Total bandwidth limit (kbps):** 0
 - **Calls entirely within this subzone Bandwidth restriction:** Limited
 - **Calls entirely within this subzone Total bandwidth limit (kbps):** 200

Links:

Links			You are here: Configuration > Bandwidth > Links				
Name ▾	Node 1	Node 2	Pipe 1	Pipe 2	Calls	Bandwidth used	Actions
<input type="checkbox"/> DefaultSZtoClusterSZ	DefaultSubZone	ClusterSubZone			0	0 kbps	View/Edit
<input type="checkbox"/> DefaultSZtoDefaultZ	DefaultSubZone	DefaultZone			0	0 kbps	View/Edit
<input type="checkbox"/> DefaultSZtoTraversalSZ	DefaultSubZone	TraversalSubZone			0	0 kbps	View/Edit
<input type="checkbox"/> SubZone001ToDefaultSZ	HQ	DefaultSubZone			0	0 kbps	View/Edit
<input type="checkbox"/> SubZone001ToTraversalSZ	HQ	TraversalSubZone			0	0 kbps	View/Edit
<input type="checkbox"/> TraversalSZtoDefaultZ	TraversalSubZone	DefaultZone			0	0 kbps	View/Edit
<input type="checkbox"/> YCS_HQ - toHQ	HQ	to HQ	to HQ pipe		1	128 kbps	View/Edit

Pipe:

"Pass Any Exam. Any Time." - www.actualtests.com 45
Cisco 300-075 Exam

Name: to HQ pipe

Total Bandwidth available – Bandwidth restriction: Limited

Total Bandwidth available – Total bandwidth limit (kbps): 256

Calls through this pipe – Bandwidth restriction: Limited

Calls through this pipe – Per call bandwidth limit (kbps): 128

What two issues could be causing the Cisco Jabber Video for TelePresence failure shown in the exhibit? (Choose two)

- A. Incorrect username and password.
- B. Wrong SIP domain configured.
- C. User is not associated with the device.
- D. IP or DNS name resolution issue.
- E. CSF Device is not registered.
- F. IP Phone DN not associated with the user.

Correct Answer: BD

Section: (none)

Explanation

Explanation/Reference:

Explanation:

QUESTION 51

Scenario:

There are two call control systems in this item.

The Cisco UCM is controlling the Cisco Jabber for Windows Client, and the 7965 and 9971 Video IP Phone.

The Cisco VCS is controlling the SX20, the Cisco TelePresence MCU, and the Cisco Jabber TelePresence for Windows.

DP:

"Pass Any Exam. Any Time." - www.actualtests.com 46
Cisco 300-075 Exam

Status				
3 records found				
Device Pool (1 - 3 of 3)				
Find Device Pool where Device Pool Name begins with Find Clear Filter + -				
<input type="checkbox"/>	Name ^	Cisco Unified CM Group	Region	D
<input type="checkbox"/>	Default	Default	Default	CMLocal
<input type="checkbox"/>	Default	Default	Default	CMLocal
<input type="checkbox"/>	GSM	Default	GSM	CMLocal
Add New Select All Clear All Delete Selected				

Locations:

Locations

Locations (1 - 3 of 3)

Find Locations where Location begins with ▼

Find

Clear Filter


☐
☐
☐
☐

[Hub_None](#)

[Phantom](#)

[Shadow](#)

Add New

Select All

Clear All

Delete Selected

CSS:

CSS

Calling Search Space (1 - 2 of 2)

Find Calling Search Space where CSS Name ▼ begins with ▼

Find

Clear Filter


☐
☐
☐

[All Devices](#)

[All-Devices](#)

CSS Name ▲

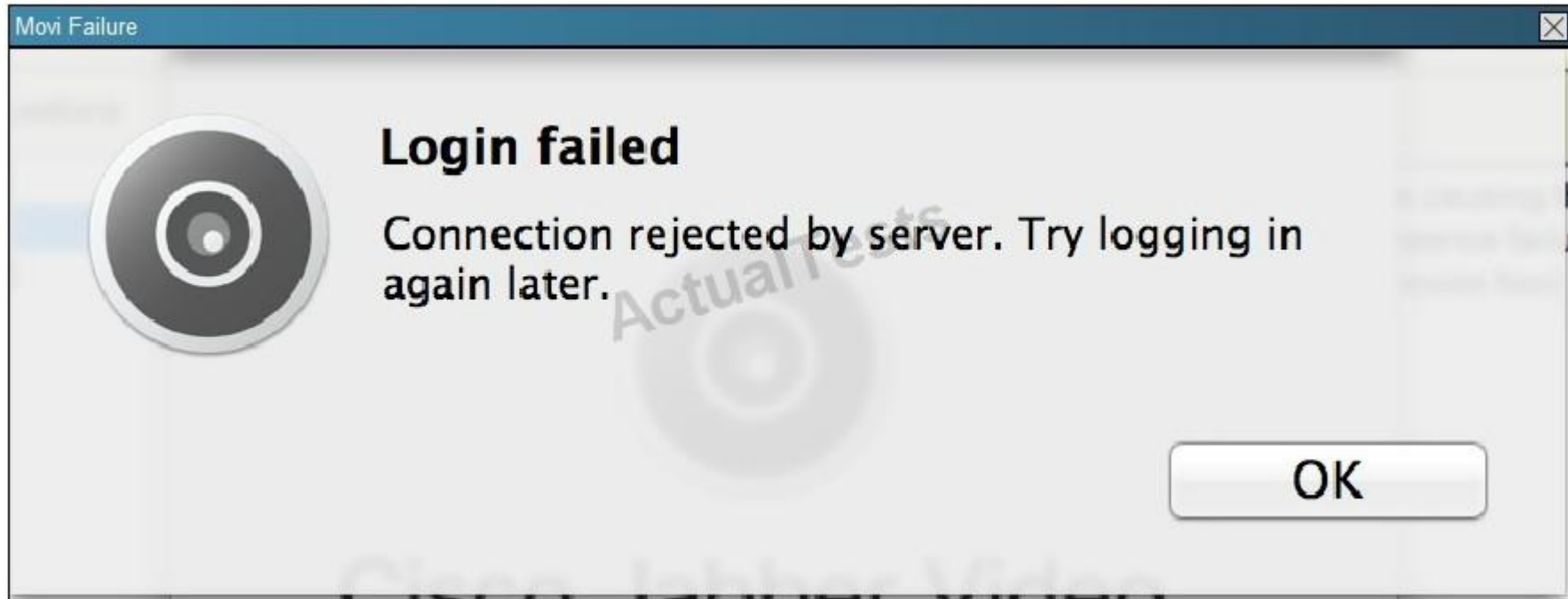
Add New

Select All

Clear All

Delete Selected

Movie Failure:

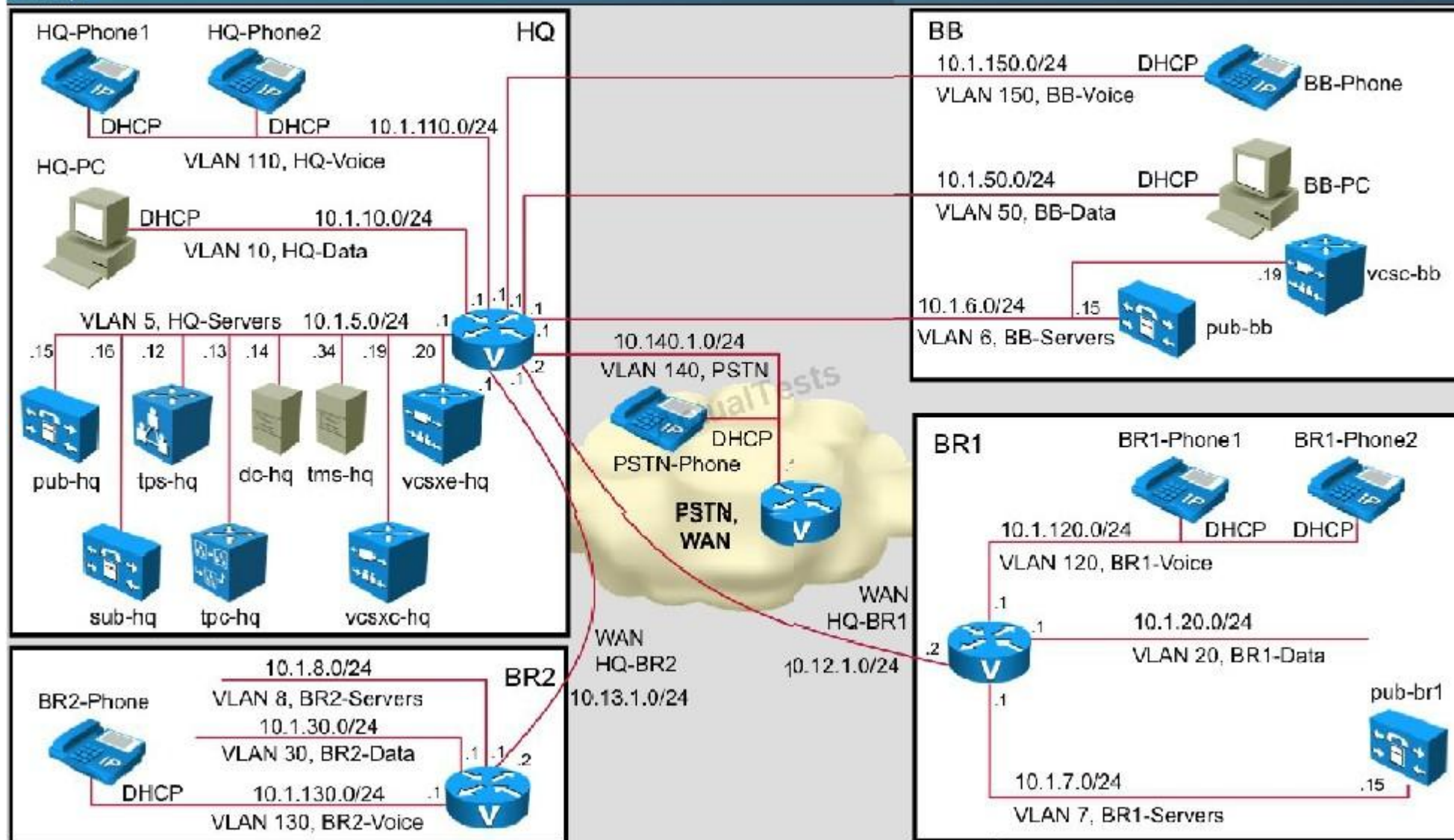


"Pass Any Exam. Any Time." - www.actualtests.com 47
Cisco 300-075 Exam
Movie Settings:

CIPTV2 Topology:

"Pass Any Exam. Any Time." - www.actualtests.com 48
Cisco 300-075 Exam

CPTV? Topo



Subzone:

Subzone

- **Name:** HQ
- **Authentication policy:** Treat as authenticated
- **Total bandwidth available - Bandwidth restriction:** Limited
- **Total bandwidth available - Total bandwidth limit (kbps):** 512
- **Calls into or out of this subzone - Bandwidth restriction:** Limited
 - **Calls into or out of this subzone - Total bandwidth limit (kbps):** 0
 - **Calls entirely within this subzone Bandwidth restriction:** Limited
 - **Calls entirely within this subzone Total bandwidth limit (kbps):** 200

Links:

Links			You are here: Configuration > Bandwidth > Links				
Name ▾	Node 1	Node 2	Pipe 1	Pipe 2	Calls	Bandwidth used	Actions
<input type="checkbox"/> DefaultSZtoClusterSZ	DefaultSubZone	ClusterSubZone			0	0 kbps	View/Edit
<input type="checkbox"/> DefaultSZtoDefaultZ	DefaultSubZone	DefaultZone			0	0 kbps	View/Edit
<input type="checkbox"/> DefaultSZtoTraversalSZ	DefaultSubZone	TraversalSubZone			0	0 kbps	View/Edit
<input type="checkbox"/> SubZone001ToDefaultSZ	HQ	DefaultSubZone			0	0 kbps	View/Edit
<input type="checkbox"/> SubZone001ToTraversalSZ	HQ	TraversalSubZone			0	0 kbps	View/Edit
<input type="checkbox"/> TraversalSZtoDefaultZ	TraversalSubZone	DefaultZone			0	0 kbps	View/Edit
<input type="checkbox"/> YCS_HQ - toHQ	HQ	to HQ	to HQ pipe		1	128 kbps	View/Edit

Pipe:

"Pass Any Exam. Any Time." - www.actualtests.com 49
Cisco 300-075 Exam

Name: to HQ pipe

Total Bandwidth available – Bandwidth restriction: Limited

Total Bandwidth available – Total bandwidth limit (kbps): 256

Calls through this pipe – Bandwidth restriction: Limited

Calls through this pipe – Per call bandwidth limit (kbps): 128

A third collaboration call fails between the backbone site and the HQ site. After reviewing the exhibits, which of the following reasons could be causing this failure?

- A. Not enough bandwidth has been allocated.
- B. Device Pool.
- C. Location.
- D. The pipe is not functioning.

Correct Answer: A

Section: (none)

Explanation

Explanation/Reference:

Explanation:

QUESTION 52

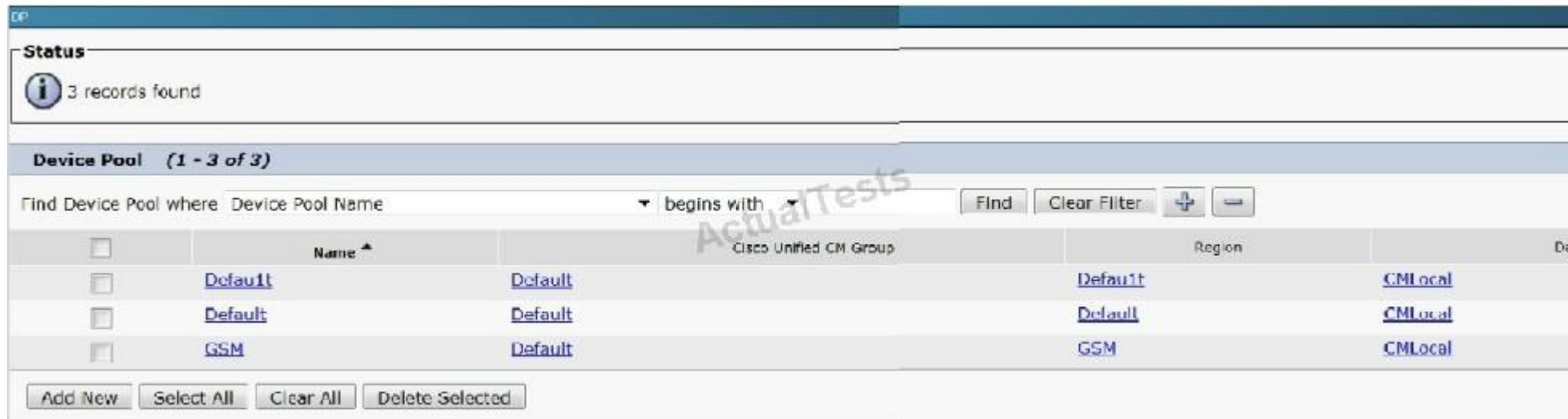
Scenario:

There are two call control systems in this item.

The Cisco UCM is controlling the DX650, the Cisco Jabber for Windows Client, and the 9971 Video IP Phone.

The Cisco VCS and TMS control the Cisco TelePresence MCU, and the Cisco Jabber TelePresence for Windows.

DP:



The screenshot shows the Cisco Unified CM Administration interface. At the top, there is a 'Status' section indicating '3 records found'. Below this is a 'Device Pool' section with a search bar and a table of device pools. The search bar is set to 'Find Device Pool where Device Pool Name begins with'. The table has columns for 'Name', 'Cisco Unified CM Group', 'Region', and 'Device Pool'. There are four rows of data, each with a checkbox in the first column. The data rows are: 1) Default, Default, Default, CMLocal; 2) Default, Default, Default, CMLocal; 3) GSM, Default, GSM, CMLocal. At the bottom of the table are buttons for 'Add New', 'Select All', 'Clear All', and 'Delete Selected'.

	Name ^	Cisco Unified CM Group	Region	Device Pool
<input type="checkbox"/>	Default	Default	Default	CMLocal
<input type="checkbox"/>	Default	Default	Default	CMLocal
<input type="checkbox"/>	GSM	Default	GSM	CMLocal

"Pass Any Exam. Any Time." - www.actualtests.com 50

Cisco 300-075 Exam

Locations:

Locations

Locations (1 - 3 of 3)

Find Locations where Location begins with

<input type="checkbox"/>	
<input type="checkbox"/>	Hub_None
<input type="checkbox"/>	Phantom
<input type="checkbox"/>	Shadow

CSS:

CSS

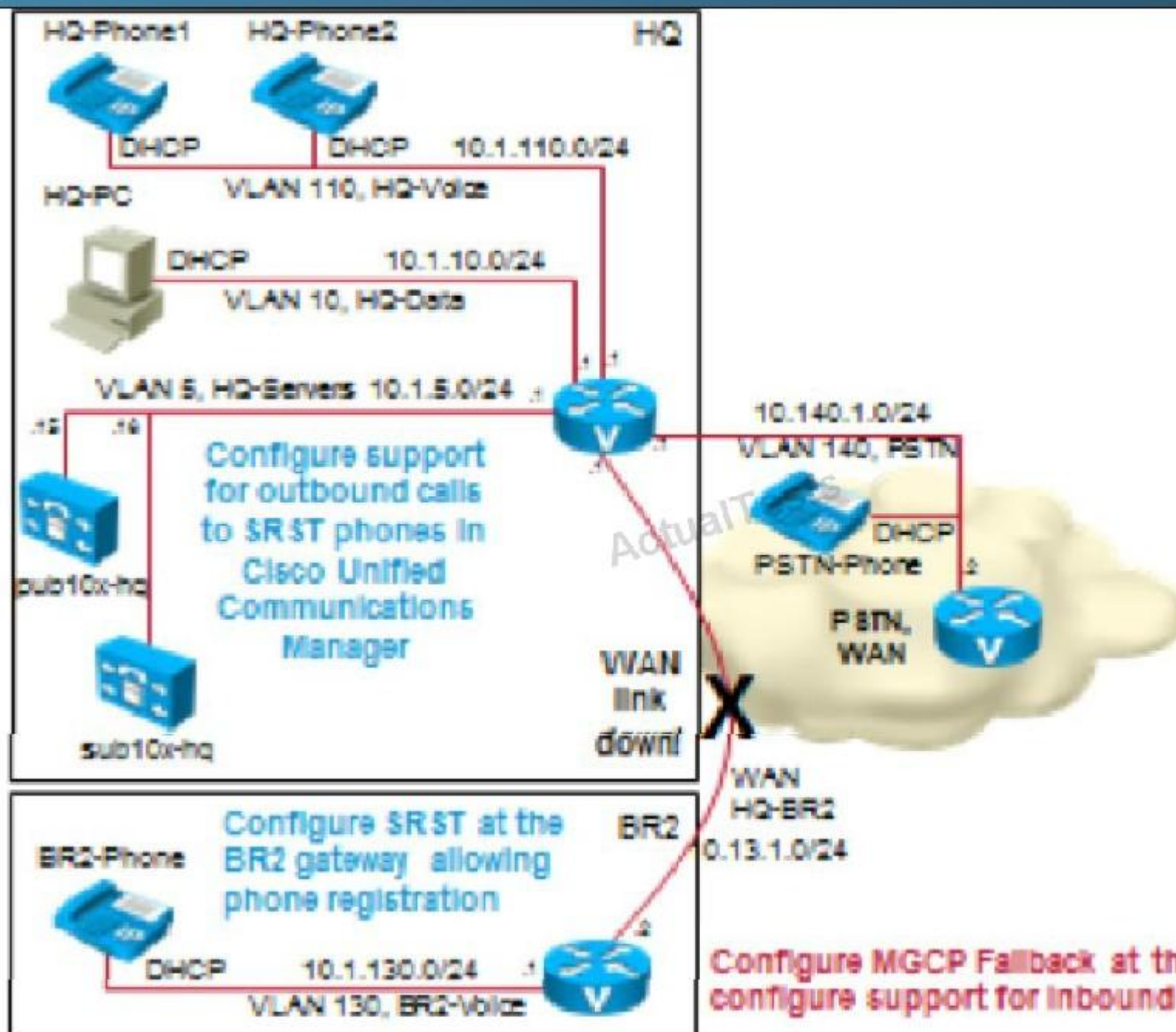
Calling Search Space (1 - 2 of 2)

Find Calling Search Space where CSS Name begins with

<input type="checkbox"/>		CSS Name ▲
<input type="checkbox"/>	All Devices	
<input type="checkbox"/>	All-Devices	

SRST:

SRST



"Pass Any Exam. Any Time." - www.actualtests.com 51
Cisco 300-075 Exam
SRST-BR2-Config:

SRST-BR2 Config

- **Name: BR2**
- **Port: 2000**
- **IP Address: 10.1.5.15**
- **SIP Network/IP Address: 10.1.5.15**

BR2 Config:

```
voice service voip
  sip
    bind control source-interface
GigabitEthernet0/0/0.130
    bind media source-interface
GigabitEthernet0/0/0.130
  registrar server
  !
voice register global
  max-dn 1
  max-pool 1
  !
voice register pool 1
  id network 10 1 130 0 mask 255 255 25
```


At the HQ cluster, the CFUR for the directory number that is applied to BR2 phone (+442288224001) has been configured:

- Forward Unregistered Internal Destination: **+442288224001**
- Forward Unregistered Internal Calling Search Space: **System css**
- Forward Unregistered External Destination: **+442288224001**
- Forward Unregistered External Calling Search Space: **System css**

After adding SRST functionality the SRST does not work. After reviewing the exhibits, which of the following reasons could be causing this failure?

- A. Device Pool cannot be default.
- B. The Cisco UCM is pointing to the wrong IPv4 address of the BR router.
- C. The router does not support SRST.
- D. The SRST enabled router is not configured correctly.

Correct Answer: A

Section: (none)

Explanation

Explanation/Reference:

Explanation:


QUESTION 53

Scenario:

There are two call control systems in this item. The Cisco UCM is controlling the DX650, the Cisco Jabber for Windows Client, and the 9971 Video IP Phone.

The Cisco VCS and TMS control the Cisco TelePresence MCU, and the Cisco Jabber TelePresence for Windows.

DP:

Status				
 3 records found				
Device Pool (1 - 3 of 3)				
Find Device Pool where Device Pool Name <input type="text"/> begins with <input type="text"/> <input type="button" value="Find"/> <input type="button" value="Clear Filter"/> <input type="button" value="+"/> <input type="button" value="-"/>				
<input type="checkbox"/>	Name ^	Cisco Unified CM Group	Region	Device
<input type="checkbox"/>	Default	Default	Default	CMLocal
<input type="checkbox"/>	Default	Default	Default	CMLocal
<input type="checkbox"/>	GSM	Default	GSM	CMLocal
<input type="button" value="Add New"/> <input type="button" value="Select All"/> <input type="button" value="Clear All"/> <input type="button" value="Delete Selected"/>				

"Pass Any Exam. Any Time." - www.actualtests.com 53

Cisco 300-075 Exam

Locations:

Locations

Locations (1 - 3 of 3)

Find Locations where Location begins with

<input type="checkbox"/>	
<input type="checkbox"/>	Hub_None
<input type="checkbox"/>	Phantom
<input type="checkbox"/>	Shadow

CSS:

CSS

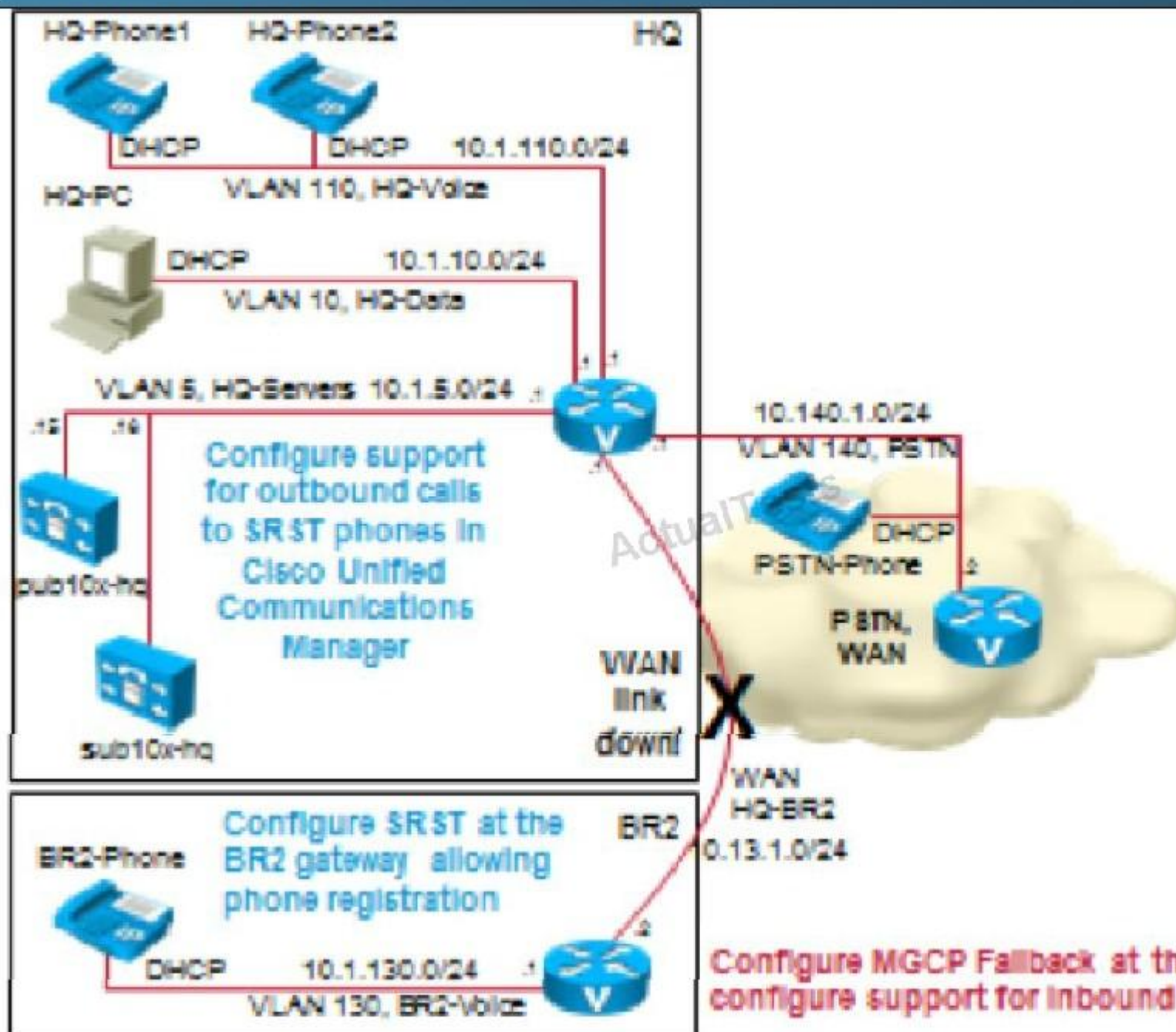
Calling Search Space (1 - 2 of 2)

Find Calling Search Space where CSS Name begins with

<input type="checkbox"/>		CSS Name ▲
<input type="checkbox"/>	All Devices	
<input type="checkbox"/>	All-Devices	

SRST:

SRST



"Pass Any Exam. Any Time." - www.actualtests.com 54
Cisco 300-075 Exam
SRST-BR2-Config:

SRST-BR2 Config

- **Name: BR2**
- **Port: 2000**
- **IP Address: 10.1.5.15**
- **SIP Network/IP Address: 10.1.5.15**

BR2 Config:


```
voice service voip
  sip
    bind control source-interface
GigabitEthernet0/0/0.130
    bind media source-interface
GigabitEthernet0/0/0.130
  registrar server
  !
voice register global
  max-dn 1
  max-pool 1
  !
voice register pool 1
  id network 10 1 130 0 mask 255 255 25
```


At the HQ cluster, the CFUR for the directory number that is applied to BR2 phone (+442288224001) has been configured:

- Forward Unregistered Internal Destination: **+442288224001**
- Forward Unregistered Internal Calling Search Space: **System css**
- Forward Unregistered External Destination: **+442288224001**
- Forward Unregistered External Calling Search Space: **System css**

After configuring the CFUR for the directory number that is applied to BR2 phone (+442288224001), the calls fail from the PSTN. Which two of the following configurations if applied to the router, would remedy this situation? (Choose two.)

- A. dial-peer voice 1 pots
incoming called-number 228822...
direct-inward-dial
port 0/0/0:15
- B. dial-peer voice 1 pots
incoming called-number 228822...
direct-inward-dial
port 0/0/0:13
- C. voice translation-rule 1
rule 1/228821....S//+44&/
exit

- ```
!
voice translation-profile pstn-in
translate called 1
!
voice-port 0/0/0:15
translation-profile incoming pstn-in
D. voice translation-rule 1
rule 1/228822.....S//+44&/
exit
!
voice translation-profile pstn-in
translate called 1
!
voice-port 0/0/0:15
translation-profile incoming pstn-in
E. The router does not need to be configured.
```

**Correct Answer:** AD

**Section:** (none)

**Explanation**

**Explanation/Reference:**

"Pass Any Exam. Any Time." - [www.actualtests.com](http://www.actualtests.com) 56  
Cisco 300-075 Exam

Explanation:

#### **QUESTION 54**

Scenario:

There are two call control systems in this item.

The Cisco UCM is controlling the DX650, the Cisco Jabber for Windows Client, and the 9971 Video IP Phone.

The Cisco VCS and TMS control the Cisco TelePresence MCU, and the Cisco Jabber TelePresence for Windows

DP:

Locations

Locations

(1 - 3 of 3)

Find Locations where Location

begins with

Find

Clear Filter

+

-

Hub\_None

Phantom

Shadow

Add New

Select All

Clear All

Delete Selected

CSS:

"Pass Any Exam. Any Time." - www.actualtests.com 57  
Cisco 300-075 Exam

CSS

**Calling Search Space (1 - 2 of 2)**

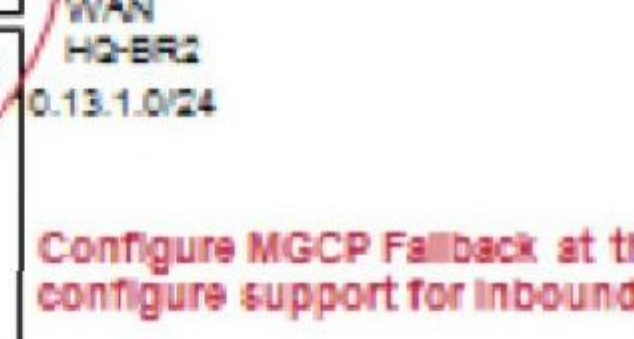
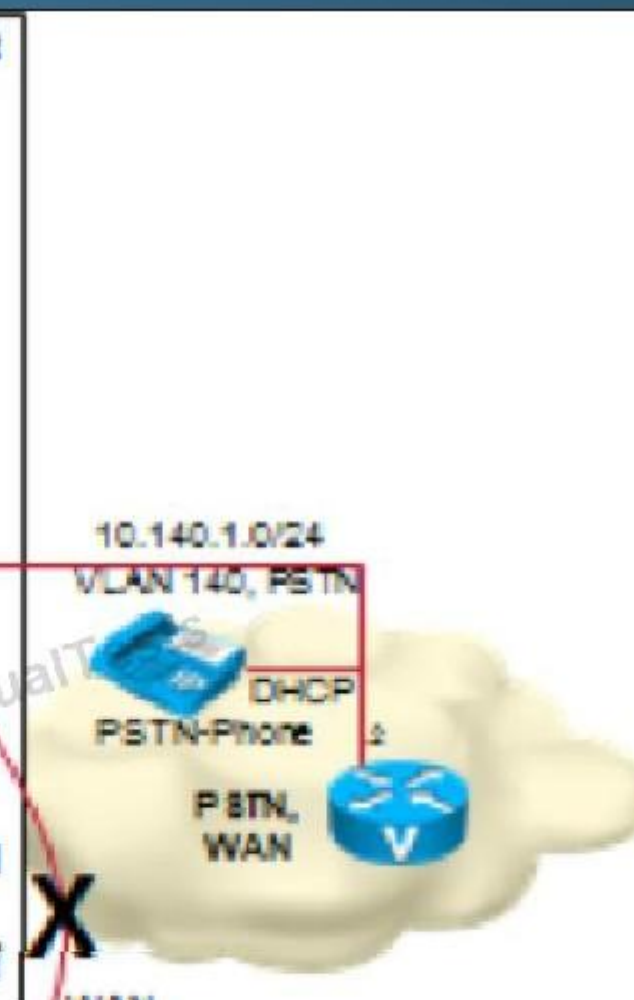
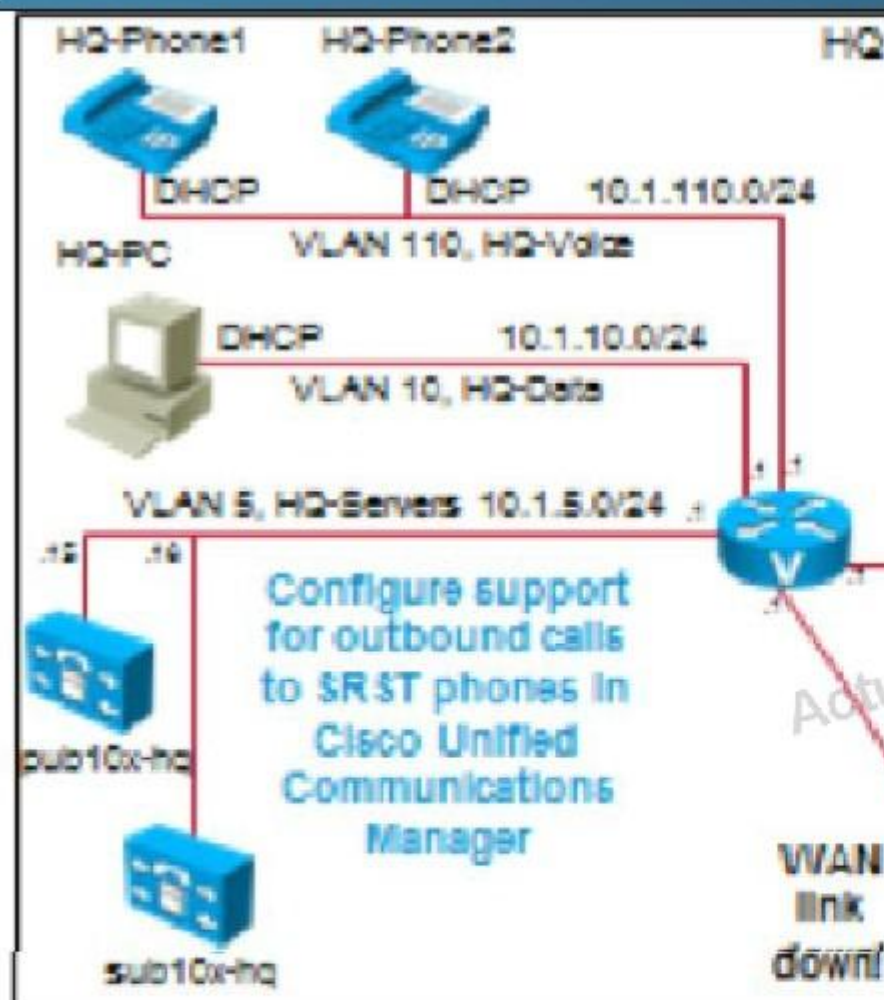
Find Calling Search Space where: CSS Name ▼ begins with ▼  Find Clear Filter + -

| <input type="checkbox"/> | CSS Name ▲                  |
|--------------------------|-----------------------------|
| <input type="checkbox"/> | <a href="#">All Devices</a> |
| <input type="checkbox"/> | <a href="#">All-Devices</a> |

Add New Select All Clear All Delete Selected

SRST:

SRST



SRST-BR2-Config:

SRST-BR2 Config

- **Name: BR2**
- **Port: 2000**
- **IP Address: 10.1.5.15**
- **SIP Network/IP Address: 10.1.5.15**

"Pass Any Exam. Any Time." - www.actualtests.com 58  
Cisco 300-075 Exam  
BR2 Config:



```
voice service voip
 sip
 bind control source-interface
GigabitEthernet0/0/0.130
 bind media source-interface
GigabitEthernet0/0/0.130
 registrar server
 !
voice register global
 max-dn 1
 max-pool 1
 !
voice register pool 1
 id network 10 1 130 0 mask 255 255 25
```



SRSTPSTNCall:

SRSTPSTNCall

At the HQ cluster, the CFUR for the directory number that is applied to BR2 phone (+442288224001) has been configured:

- Forward Unregistered Internal Destination: **+442288224001**
- Forward Unregistered Internal Calling Search Space: **System css**
- Forward Unregistered External Destination: **+442288224001**
- Forward Unregistered External Calling Search Space: **System css**

Which device configuration option will allow an administrator to control bandwidth between calls placed between branches?

"Pass Any Exam. Any Time." - [www.actualtests.com](http://www.actualtests.com) 59  
Cisco 300-075 Exam

- A. Media Resource Group List
- B. Device Pool
- C. Location
- D. AAR Group
- E. Regions

**Correct Answer: C**

**Section: (none)**

**Explanation**

**Explanation/Reference:**

Explanation:

**QUESTION 55**

Scenario:

There are two call control systems in this item.

The Cisco UCM is controlling the DX650, the Cisco Jabber for Windows Client, and the 7965 and 9971 Video IP Phones.


The Cisco VCS and TMS control the Cisco TelePresence Conductor, the Cisco TelePresence MCU, and the Cisco Jabber TelePresence for Windows.

DNS Server:

```
ip dns server
ip host _cisco-uds._tcp.hq.cisco.com srv 1 1 8443 10.1.5.15
ip host _cisco-uds._tcp.hq.cisco.com srv 1 1 8443 10.1.5.16
ip host pub10x-hq.collab10x.cisco.com 10.1.5.15
ip host sub10x-hq.collab10x.cisco.com 10.1.5.16
ip host pub10x-hq.hq.collab10x.cisco.com 10.1.5.15
ip host sub10x-hq.hq.collab10x.cisco.com 10.1.5.16
ip host hq.cisco.com 10.1.5.1
```

Device Pool:

Device Pool

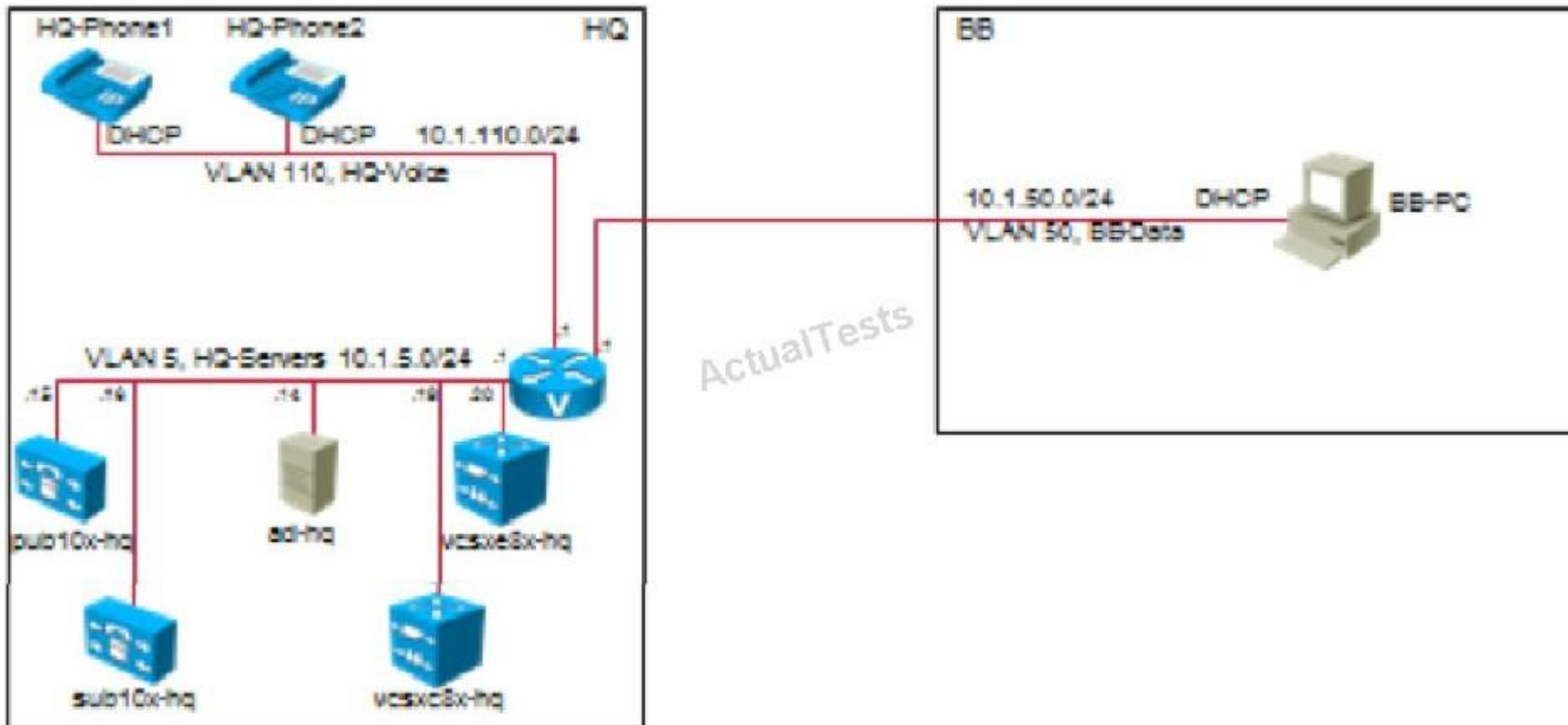
**Status**  
 3 records found

**Device Pool (1 - 3 of 3)**  
 Find Device Pool where Device Pool Name ▼ begins with ▼ Find Clear Filter + -

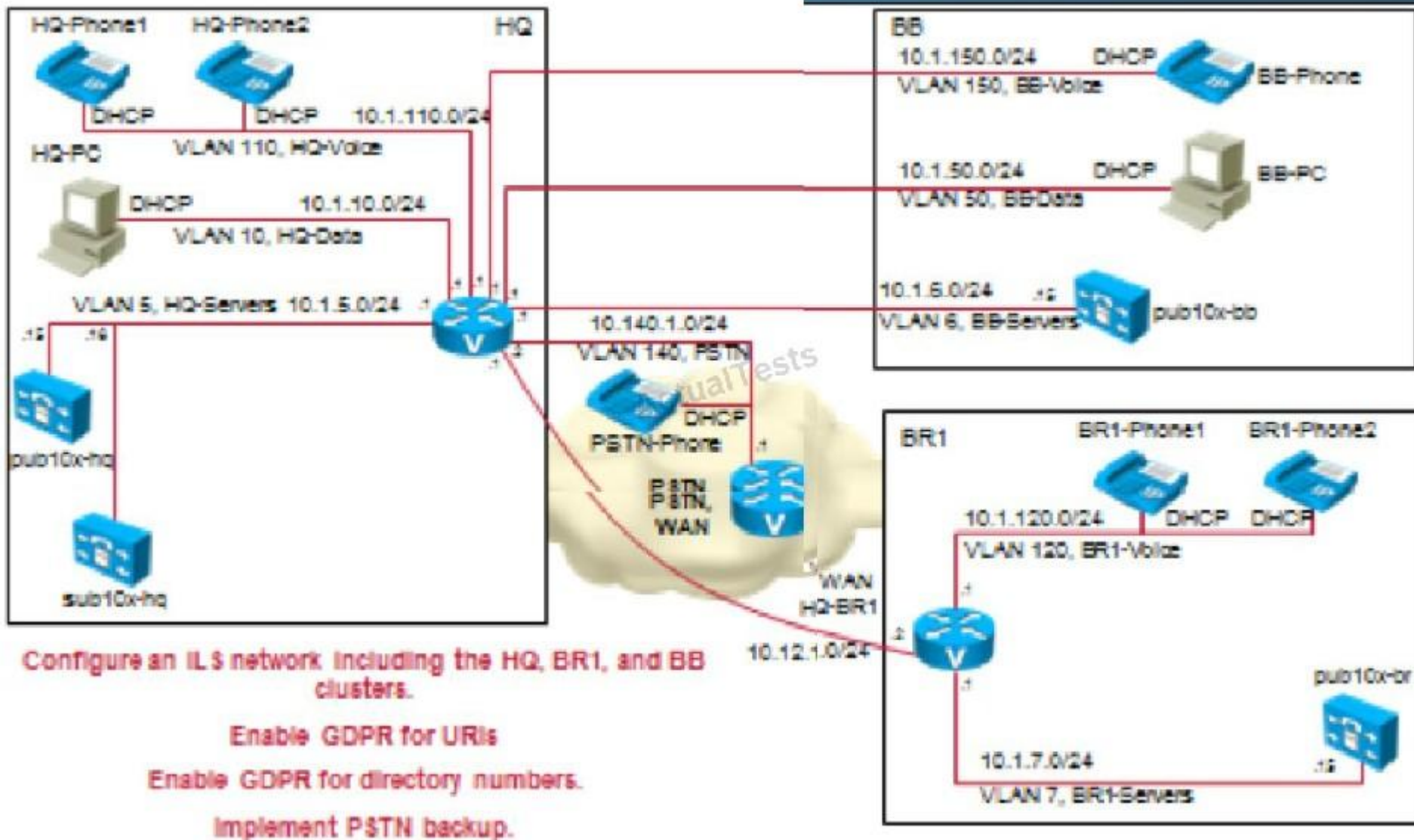
| <input type="checkbox"/> | Name <span>▲</span>     | Default                 | Region                  | Date                    |
|--------------------------|-------------------------|-------------------------|-------------------------|-------------------------|
|                          |                         | Cisco Unified CM Group  |                         |                         |
| <input type="checkbox"/> | <a href="#">Default</a> | <a href="#">Default</a> | <a href="#">Default</a> | <a href="#">CMLocal</a> |
| <input type="checkbox"/> | <a href="#">Default</a> | <a href="#">Default</a> | <a href="#">Default</a> | <a href="#">CMLocal</a> |
| <input type="checkbox"/> | <a href="#">GSM</a>     | <a href="#">Default</a> | <a href="#">GSM</a>     | <a href="#">CMLocal</a> |

Add New Select All Clear All Delete Selected

"Pass Any Exam. Any Time." - www.actualtests.com 60  
 Cisco 300-075 Exam  
 Expressway:



ILS:



Locations:



## Locations

### Locations (1 - 3 of 3)

Find Locations where Location begins with




Find

Clear Filter


☐
☐
☐
☐

[Hub\\_None](#)

[Phantom](#)

[Shadow](#)

Add New

Select All

Clear All

Delete Selected

"Pass Any Exam. Any Time." - www.actualtests.com 61

Cisco 300-075 Exam

MRA:

NTA

```
ip host _collab-edge._tls.hq.cisco.com SRV 1 1 8443 vcsxe8x-
hq.hq.collab10x.cisco.com
```

```
ip host vcsxe8x-hq.hq.collab10x.cisco.com 10.1.5.20
```

Speed Dial:

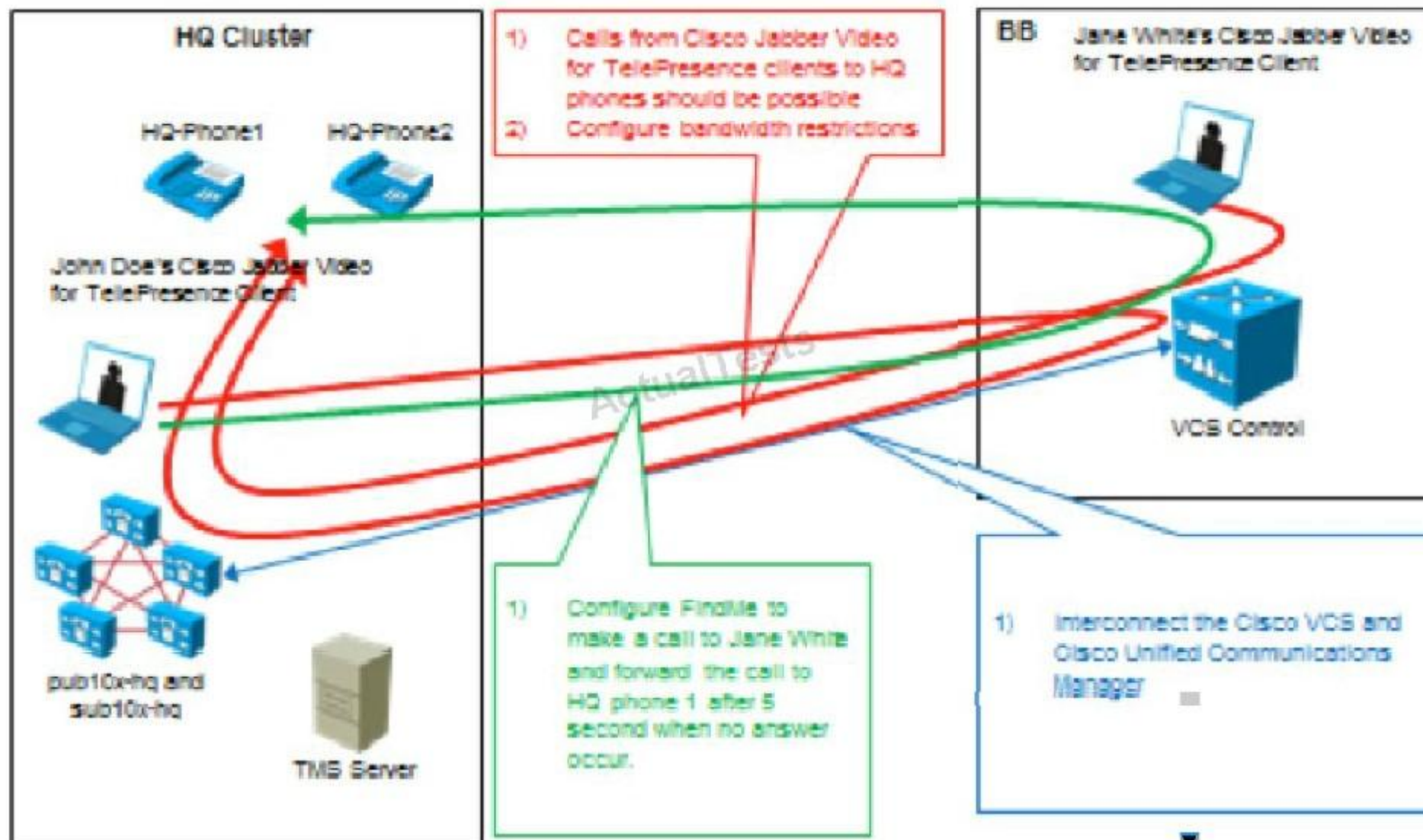
Speed Dial

| Phone       | Speed Dial Button | Speed Dial Destination |
|-------------|-------------------|------------------------|
| HQ phone 1  | 1                 | hq2@cisco.lab          |
| HQ phone 1  | 2                 | br1@cisco.lab          |
| HQ phone 1  | 3                 | bb@cisco.lab           |
| HQ phone 2  | 1                 | hq1@cisco.lab          |
| HQ phone 2  | 2                 | br1@cisco.lab          |
| HQ phone 2  | 2                 | br1@cisco.lab          |
| HQ phone 2  | 3                 | bb@cisco.lab           |
| BR1 phone 1 | 1                 | hq1@cisco.lab          |
| BR1 phone 1 | 2                 | hq2@cisco.lab          |



SIP Trunk:

"Pass Any Exam. Any Time." - [www.actualtests.com](http://www.actualtests.com) 62  
Cisco 300-075 Exam



Which three configuration tasks need to be completed on the router to support the registration of Cisco Jabber clients? (Choose three.)

- A. The DNS server has the wrong IP address.
- B. The internal DNS Service (SRV) records need to be updated on the DNS Server.
- C. Flush the DNS Cache on the client.
- D. The DNS AOR records are wrong.
- E. Add the appropriate DNS SRV for the Internet entries on the DNS Server.

**Correct Answer:** BCE

**Section:** (none)

**Explanation**

**Explanation/Reference:**

Explanation:

#### **QUESTION 56**

Scenario:

There are two call control systems in this item.

The Cisco UCM is controlling the DX650, the Cisco Jabber for Windows Client, and the 7965 and 9971 Video IP Phones.

The Cisco VCS and TMS control the Cisco TelePresence Conductor, the Cisco TelePresence MCU, and the Cisco Jabber TelePresence for Windows.


DNS Server:

"Pass Any Exam. Any Time." - [www.actualtests.com](http://www.actualtests.com) 63  
Cisco 300-075 Exam

```
ip dns server
ip host _cisco-uds._tcp.hq.cisco.com srv 1 1 8443 10.1.5.15
ip host _cisco-uds._tcp.hq.cisco.com srv 1 1 8443 10.1.5.16
ip host pub10x-hq.collab10x.cisco.com 10.1.5.15
ip host sub10x-hq.collab10x.cisco.com 10.1.5.16
ip host pub10x-hq.hq.collab10x.cisco.com 10.1.5.15
ip host sub10x-hq.hq.collab10x.cisco.com 10.1.5.16
ip host hq.cisco.com 10.1.5.1
```

Device Pool:

Device Pool

**Status**  
 3 records found

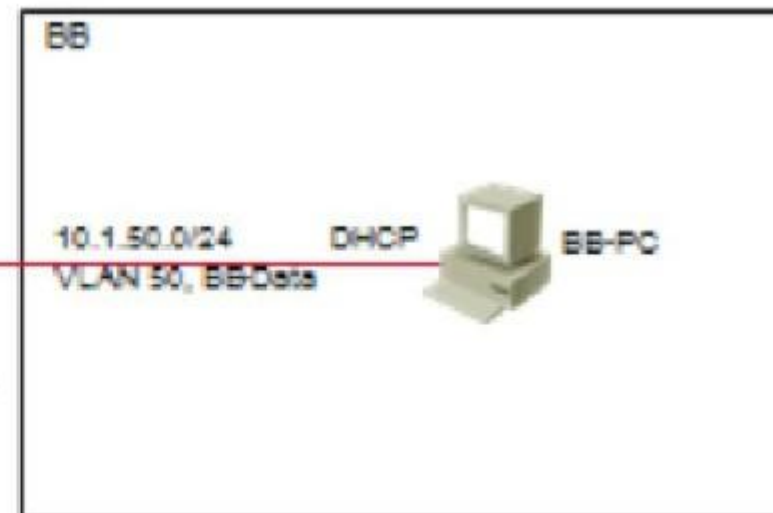
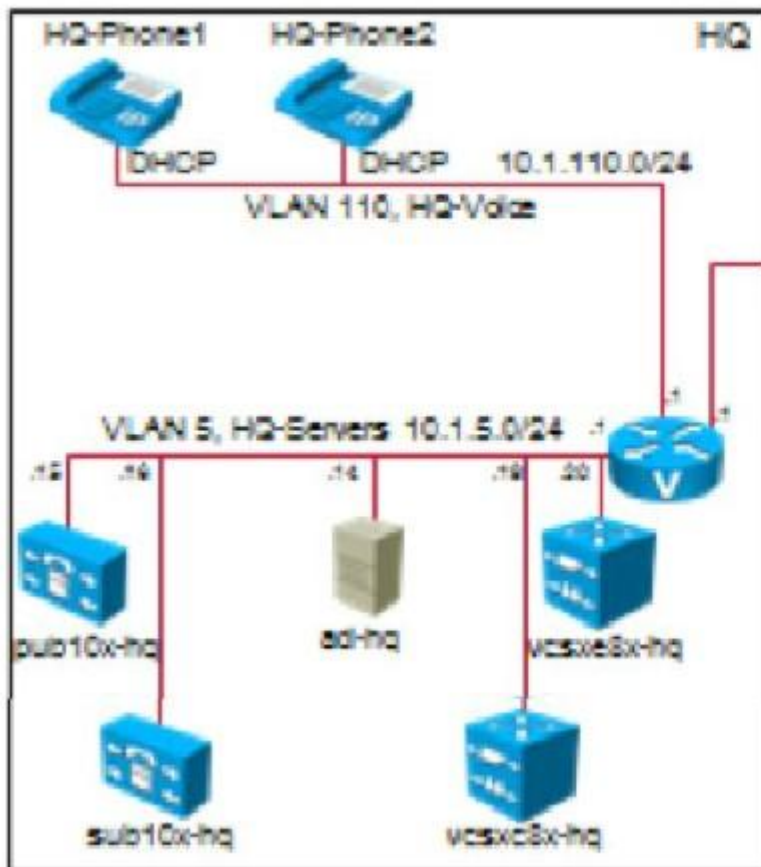
**Device Pool (1 - 3 of 3)**  
 Find Device Pool where Device Pool Name ▼ begins with ▼ Find Clear Filter + -

| <input type="checkbox"/> | Name <span>▲</span>     | Default                 | Region                  | Date                    |
|--------------------------|-------------------------|-------------------------|-------------------------|-------------------------|
|                          |                         | Cisco Unified CM Group  |                         |                         |
| <input type="checkbox"/> | <a href="#">Default</a> | <a href="#">Default</a> | <a href="#">Default</a> | <a href="#">CMLocal</a> |
| <input type="checkbox"/> | <a href="#">Default</a> | <a href="#">Default</a> | <a href="#">Default</a> | <a href="#">CMLocal</a> |
| <input type="checkbox"/> | <a href="#">GSM</a>     | <a href="#">Default</a> | <a href="#">GSM</a>     | <a href="#">CMLocal</a> |

Add New Select All Clear All Delete Selected

Expressway:

Expressway

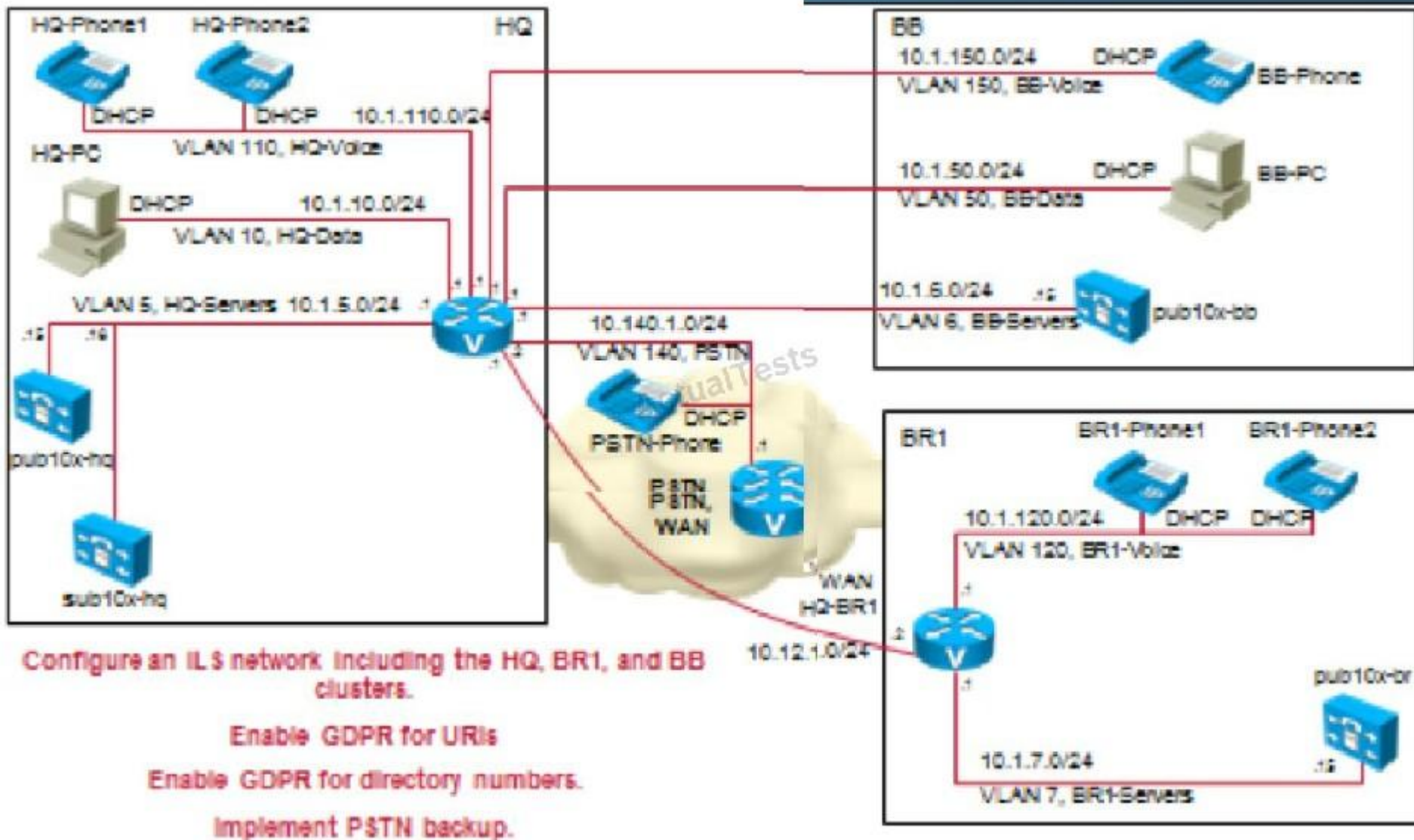


ActualTests

ILS:

"Pass Any Exam. Any Time." - [www.actualtests.com](http://www.actualtests.com) 64  
Cisco 300-075 Exam





Locations:



Locations

Locations (1 - 3 of 3)

Find Locations where Location begins with  Find Clear Filter

|                          |                          |
|--------------------------|--------------------------|
| <input type="checkbox"/> |                          |
| <input type="checkbox"/> | <a href="#">Hub_None</a> |
| <input type="checkbox"/> | <a href="#">Phantom</a>  |
| <input type="checkbox"/> | <a href="#">Shadow</a>   |

MRA:

```
ip host _collab-edge._tls.hq.cisco.com SRV 1 1 8443 vcsxe8x-
hq.hq.collab10x.cisco.com
ip host vcsxe8x-hq.hq.collab10x.cisco.com 10.1.5.20
```

Speed Dial:

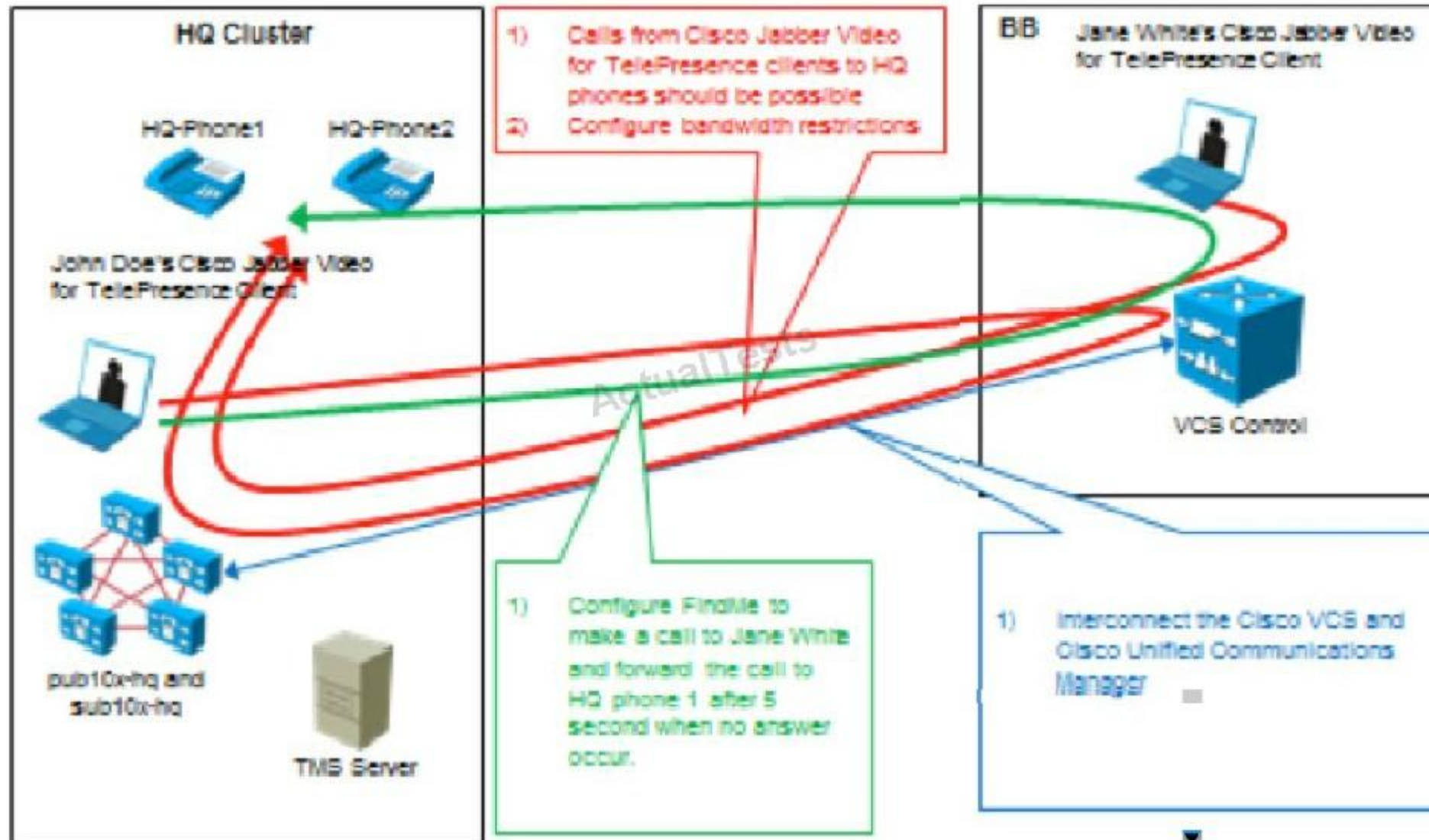
"Pass Any Exam. Any Time." - [www.actualtests.com](http://www.actualtests.com) 65  
Cisco 300-075 Exam

Speed Dial

| Phone       | Speed Dial Button | Speed Dial Destination |
|-------------|-------------------|------------------------|
| HQ phone 1  | 1                 | hq2@cisco.lab          |
| HQ phone 1  | 2                 | br1@cisco.lab          |
| HQ phone 1  | 3                 | bb@cisco.lab           |
| HQ phone 2  | 1                 | hq1@cisco.lab          |
| HQ phone 2  | 2                 | br1@cisco.lab          |
| HQ phone 2  | 2                 | br1@cisco.lab          |
| HQ phone 2  | 3                 | bb@cisco.lab           |
| BR1 phone 1 | 1                 | hq1@cisco.lab          |
| BR1 phone 1 | 2                 | hq2@cisco.lab          |

SIP Trunk:

SIP Trunk



The intercluster URI call routing no longer allows calls between sites. What is the reason why this would happen?

"Pass Any Exam. Any Time." - [www.actualtests.com](http://www.actualtests.com) 66  
Cisco 300-075 Exam

- A. Wrong SIP domain configured.
- B. User is not associated with the device.
- C. IP or DNS name resolution issue.
- D. No SIP route patterns for cisco.lab exist.

**Correct Answer:** CD

**Section:** (none)

**Explanation**

**Explanation/Reference:**

Explanation:

#### **QUESTION 57**

Scenario:

There are two call control systems in this item.

The Cisco UCM is controlling the DX650, the Cisco Jabber for Windows Client, and the 7965 and 9971 Video IP Phones.

The Cisco VCS and TMS control the Cisco TelePresence Conductor, the Cisco TelePresence MCU, and the Cisco Jabber TelePresence for Windows.

DNS Server:

```
ip dns server
ip host _cisco-uds._tcp.hq.cisco.com srv 1 1 8443 10.1.5.15
ip host _cisco-uds._tcp.hq.cisco.com srv 1 1 8443 10.1.5.16
ip host pub10x-hq.collab10x.cisco.com 10.1.5.15
ip host sub10x-hq.collab10x.cisco.com 10.1.5.16
ip host pub10x-hq.hq.collab10x.cisco.com 10.1.5.15
ip host sub10x-hq.hq.collab10x.cisco.com 10.1.5.16
ip host hq.cisco.com 10.1.5.1
```

Device Pool:

Device Pool

**Status**  
*i* 3 records found

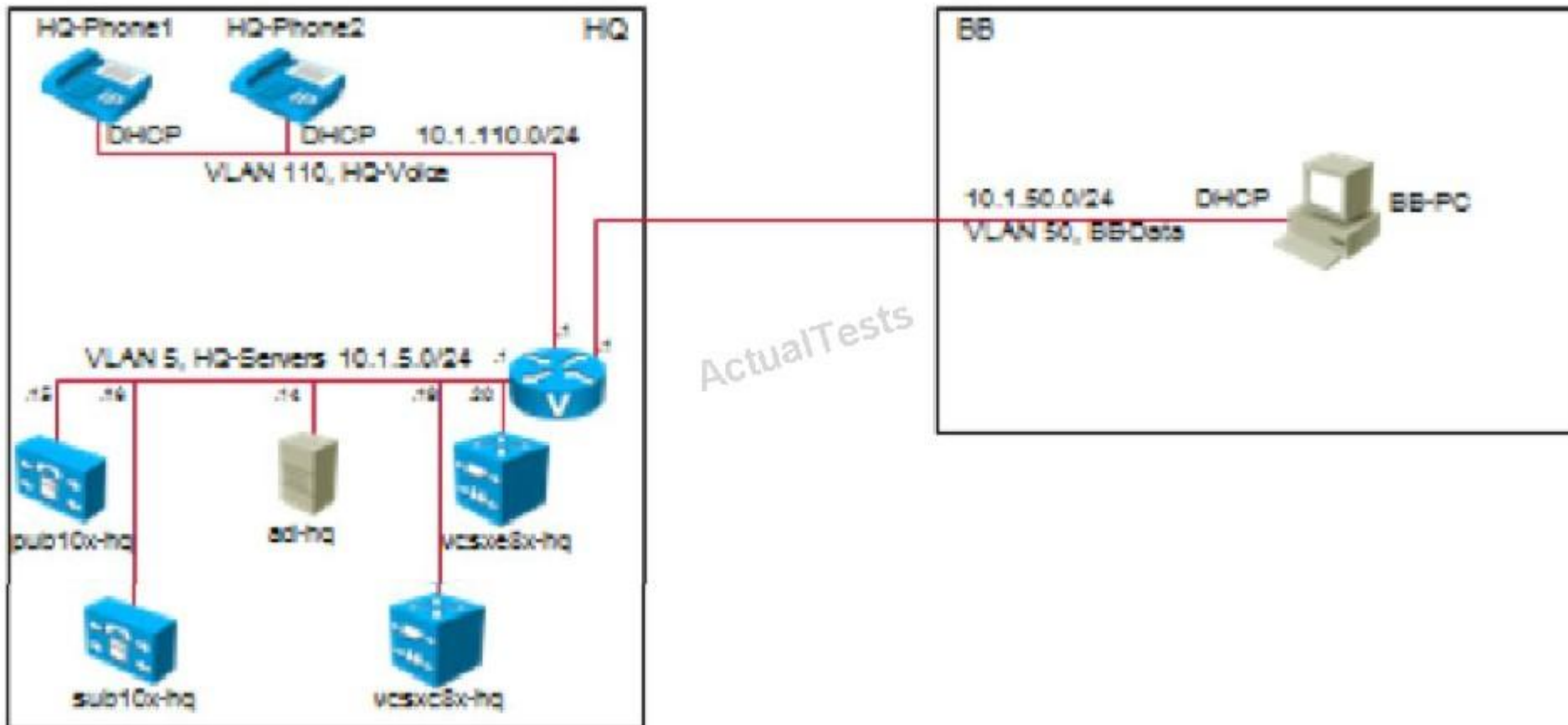
**Device Pool (1 - 3 of 3)**  
 Find Device Pool where Device Pool Name ▼ begins with ▼ Find Clear Filter + -

| <input type="checkbox"/> | Name <span>▲</span> | Default | Region  | Date    |
|--------------------------|---------------------|---------|---------|---------|
| <input type="checkbox"/> | Default             | Default | Default | CMLocal |
| <input type="checkbox"/> | Default             | Default | Default | CMLocal |
| <input type="checkbox"/> | GSM                 | Default | GSM     | CMLocal |

Add New Select All Clear All Delete Selected

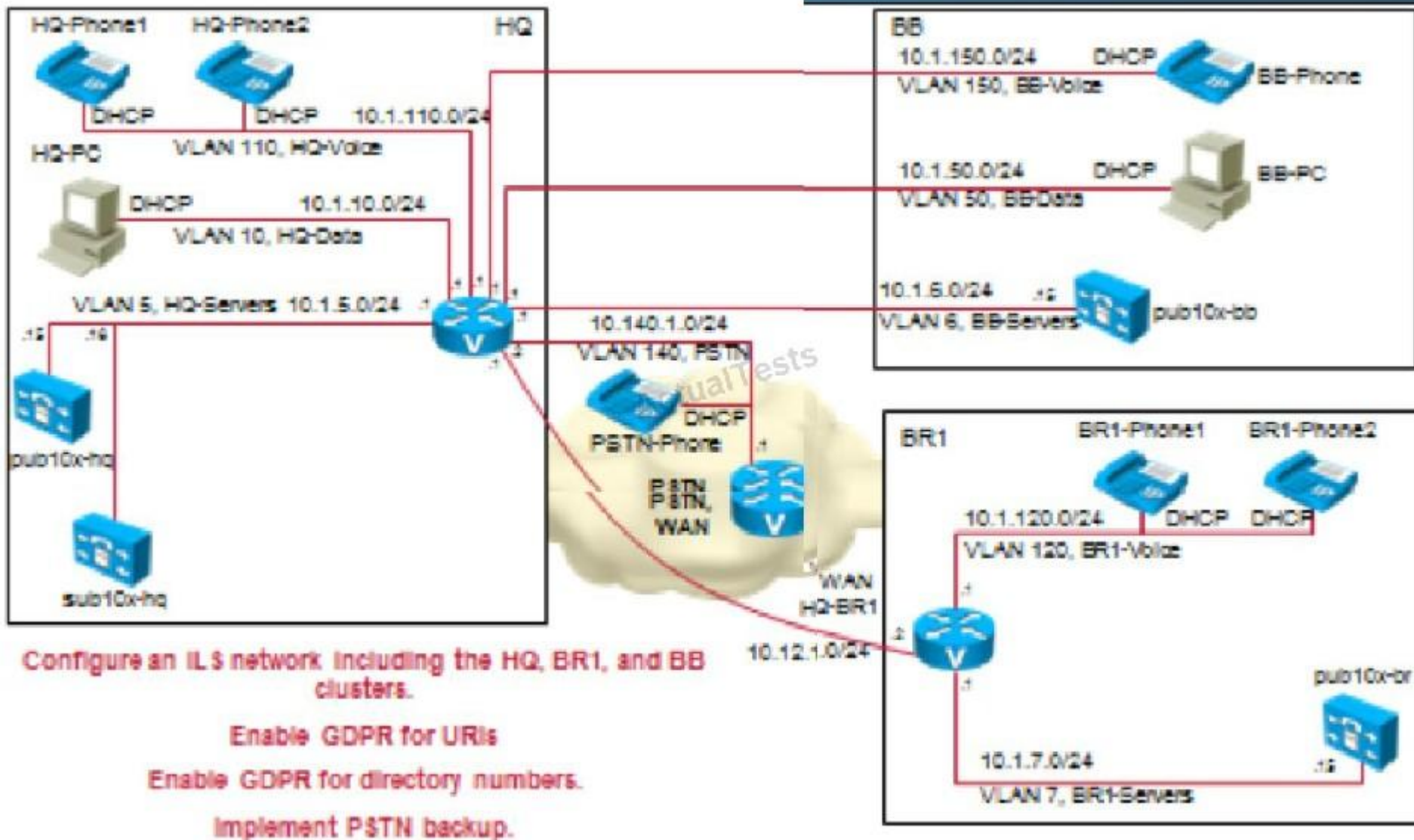
"Pass Any Exam. Any Time." - www.actualtests.com 67  
 Cisco 300-075 Exam  
 Expressway:





ILS:





Locations:

Locations

Locations (1 - 3 of 3)

Find Locations where Location begins with  Find Clear Filter

|                          |                          |
|--------------------------|--------------------------|
| <input type="checkbox"/> |                          |
| <input type="checkbox"/> | <a href="#">Hub_None</a> |
| <input type="checkbox"/> | <a href="#">Phantom</a>  |
| <input type="checkbox"/> | <a href="#">Shadow</a>   |

"Pass Any Exam. Any Time." - www.actualtests.com 68  
 Cisco 300-075 Exam  
 MRA:

```
ip host _collab-edge._tls.hq.cisco.com SRV 1 1 8443 vcsxe8x-

hq.hq.collab10x.cisco.com

ip host vcsxe8x-hq.hq.collab10x.cisco.com 10.1.5.20
```

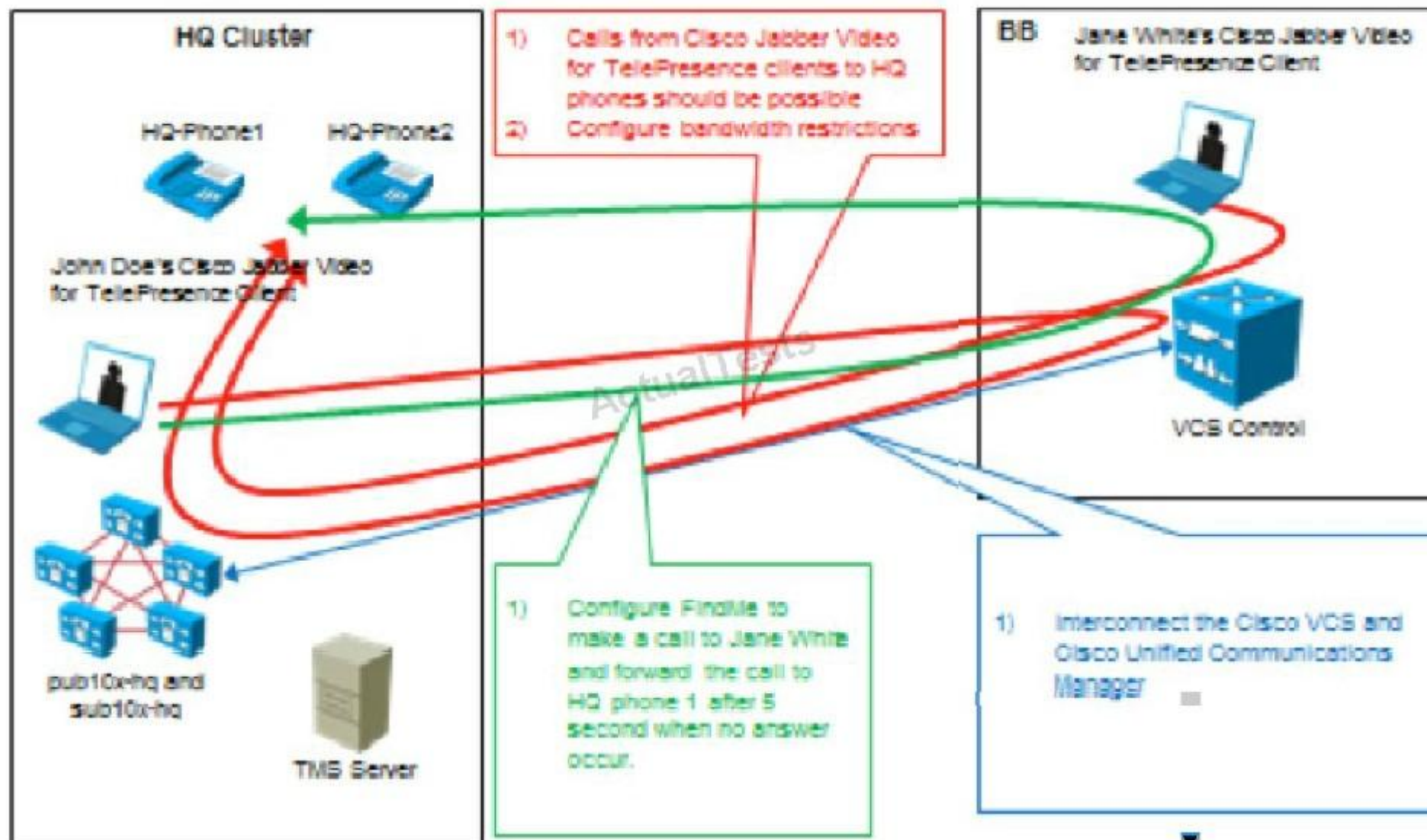
Speed Dial:

Speed Dial

| Phone       | Speed Dial Button | Speed Dial Destination |
|-------------|-------------------|------------------------|
| HQ phone 1  | 1                 | hq2@cisco.lab          |
| HQ phone 1  | 2                 | br1@cisco.lab          |
| HQ phone 1  | 3                 | bb@cisco.lab           |
| HQ phone 2  | 1                 | hq1@cisco.lab          |
| HQ phone 2  | 2                 | br1@cisco.lab          |
| HQ phone 2  | 2                 | br1@cisco.lab          |
| HQ phone 2  | 3                 | bb@cisco.lab           |
| BR1 phone 1 | 1                 | hq1@cisco.lab          |
| BR1 phone 1 | 2                 | hq2@cisco.lab          |

SIP Trunk:

"Pass Any Exam. Any Time." - [www.actualtests.com](http://www.actualtests.com) 69  
Cisco 300-075 Exam



What two tasks must be completed in order to support calls between the VCS controlled endpoints and the Cisco Unified CM endpoints? (Choose two.)



- A. Media Resource Group List.
- B. Configure a SIP trunk on the Cisco Unified CM to point to the Cisco VCS.
- C. Configure a neighbor zone on the Cisco Unified CM to point to the Cisco VCS.
- D. Configure a SIP trunk on the Cisco VCS to point to the Cisco Unified CM.
- E. Configure a neighbor zone on the Cisco VCS to point to the Cisco Unified CM.

**Correct Answer:** CD

**Section:** (none)

**Explanation**

**Explanation/Reference:**

Explanation:

**QUESTION 58**

A video endpoint is configured with SIP only. What does a video endpoint use to register with the VCS Control?

- A. IP address
- B. SIP URI
- C. MAC address
- D. system name

**Correct Answer:** B

**Section:** (none)

**Explanation**

**Explanation/Reference:**

Explanation:

"Pass Any Exam. Any Time." - [www.actualtests.com](http://www.actualtests.com) 70  
Cisco 300-075 Exam

**QUESTION 59**

Which zone will the VCS Control use to route calls to the VCS Expressway?

- A. neighbor zone
- B. DNS zone
- C. traversal client zone
- D. ENUM zone

**Correct Answer:** C



**Section: (none)**

**Explanation**

**Explanation/Reference:**

Explanation:

**QUESTION 60**

You want to configure Cisco VCS SIP endpoints and H.323 endpoints so that they communicate with one another. To do this, which format must you use in the Search Rule?

- A. name@domain
- B. IP Address (192.168.100.0)
- C. name@hostname
- D. name@IP Address (192.168.100.0)

**Correct Answer: A**

**Section: (none)**

**Explanation**

**Explanation/Reference:**

Explanation:

**QUESTION 61**

When you connect a Cisco VCS Control to Cisco Unified Communications Manager by using a SIP trunk, which mechanism do you use to verify that the trunk has an active connection?

- A. OPTIONS ping
- B. DNS tracing
- C. Continuous ping
- D. Dynamic DNS

**Correct Answer: A**

**Section: (none)**

**Explanation**

**Explanation/Reference:**

Explanation:

"Pass Any Exam. Any Time." - [www.actualtests.com](http://www.actualtests.com) 71  
Cisco 300-075 Exam

**QUESTION 62**

Which DNS SRV Records must be configured on the external DNS server in a mobile remote access scenario with Cisco Expressway?

- A. \_collab-edge.\_tls.example.com
- B. \_collab-edge.\_udp.example.com
- C. \_cisco-uds.\_tcp.example.com
- D. \_cuplogin.\_tcp.example.com

**Correct Answer:** A

**Section:** (none)

**Explanation**

**Explanation/Reference:**

Explanation:

**QUESTION 63**

Company X currently uses a Cisco Unified Communications Manager, which has been configured for IP desk phones and Jabber soft phones. Users report however that whenever they are out of the office, a VPN must be set up before their Jabber client can be used. The administrator for Company X has deployed a Collaboration Expressway server at the edge of the network in an attempt to remove the need for VPN when doing voice. However, devices outside cannot register.

Which two additional steps are needed to complete this deployment? (Choose two.)

- A. A SIP trunk has to be set up between the Expressway-C and Cisco UCM.
- B. An additional interface must be enabled on the Cisco UCM and placed in the same subnet at the Expressway.
- C. The customer firewall must be configured with any rule for the IP address of the external Jabber client.
- D. The Expressway server needs a neighbor zone created that points to Cisco UCM.
- E. Jabber cannot connect to Cisco UCM unless it is on the same network or a VPN is set up from outside.

**Correct Answer:** AD

**Section:** (none)

**Explanation**

**Explanation/Reference:**

Explanation:

**QUESTION 64**

A new administrator at Company X has deployed a VCS Control on the LAN and VCS Expressway in the DMZ to facilitate VPN-less SIP calls with users outside of the network. However, the users report that calls via the VCS are erratic and not very consistent.

"Pass Any Exam. Any Time." - [www.actualtests.com](http://www.actualtests.com) 72

Cisco 300-075 Exam

What must the administrator configure on the firewall to stabilize this deployment?

- A. The VCS Control should not be on the LAN, but it must be located in the DMZ with the Expressway.
- B. The firewall at Company X must have all SIP ALG functions disabled.
- C. The firewall at Company X requires a rule to allow all traffic from the DMZ to pass to the same network that the VCS Control is on.
- D. A TMS server is needed to allow the firewall traversal to occur between the VCS Expressway and the VCS Control servers.

**Correct Answer:** B

**Section:** (none)

**Explanation**

**Explanation/Reference:**

Explanation:

#### QUESTION 65

The VCS Expressway can be configured with security controls to safeguard external calls and endpoints. One such option is the control of trusted endpoints via a whitelist.

Where is this option enabled?

- A. on the voice-enabled firewall at the edge of the network
- B. on the VCS under Configuration > registration > configuration
- C. on the TMS server under Registrations > whitelist
- D. on the VCS under System > configuration > Registrations

**Correct Answer:** B

**Section:** (none)

**Explanation**

**Explanation/Reference:**

Explanation:

#### QUESTION 66

Which statement about configuring the Cisco VCS Control and Cisco VCS Expressway is true?

- A. You do not need to configure search rules for traversal calls.
- B. You need to configure the firewall to allow communication from the Cisco VCS Expressway to the Cisco VCS Control.
- C. The username on the Cisco VCS Control and Cisco VCS Expressway are local and do not need to match.
- D. The Cisco VCS Expressway is the Traversal Server.

**Correct Answer:** D

**Section:** (none)

**Explanation**

**Explanation/Reference:**

"Pass Any Exam. Any Time." - [www.actualtests.com](http://www.actualtests.com) 73  
Cisco 300-075 Exam

Explanation:

**QUESTION 67**

Company X wants to implement RSVP-based Call Admission Control and move away from the current location-based configuration.

Where does the administrator go to create a default profile?

- A. System > Call Manager > Clusterwide > Service Parameters > RSVP
- B. System > Service Parameters > RSVP
- C. System > Service Parameters > Call Manager > Clusterwide parameters > RSVP
- D. on each MGCP gateway at all remote locations

**Correct Answer:** C

**Section:** (none)

**Explanation**

**Explanation/Reference:**

Explanation:

**QUESTION 68**

Where can you change the clusterwide DSCP setting for Cisco Unified Communications Manager?

- A. enterprise parameters
- B. service parameters
- C. enterprise phone configuration
- D. Ethernet configuration

**Correct Answer:** B

**Section:** (none)

**Explanation**

**Explanation/Reference:**

Explanation:

**QUESTION 69**

Refer to the exhibit.

"Pass Any Exam. Any Time." - [www.actualtests.com](http://www.actualtests.com) 74  
Cisco 300-075 Exam

```
Router#sh policy-map interface serial0/3/0
Serial0/3/0

Service-policy output: VOICE-VIDEO

 queue stats for all priority classes:

 queue limit 64 packets
 (queue depth/total drops/no-buffer drops) 0/0/0
 (pkts output/bytes output) 0/0

 Class-map: VOICE (match-all)
 0 packets, 0 bytes
 5 minute offered rate 0 bps, drop rate 0 bps
 Match: dscp ef (46)
 Priority: 10% (153 kbps), burst bytes 3800, b/w exceed drops: 0

 Class-map: VIDEO (match-all)
 0 packets, 0 bytes
 5 minute offered rate 0 bps, drop rate 0 bps
 Match: dscp af41 (34)
 Queueing
 queue limit 64 packets
 (queue depth/total drops/no-buffer drops) 0/0/0
 (pkts output/bytes output) 0/0
 bandwidth 25% (384 kbps)

 Class-map: TELEPRESENCE (match-all)
 0 packets, 0 bytes
 5 minute offered rate 0 bps, drop rate 0 bps
 Match: dscp af32 (28)
 Queueing
 queue limit 64 packets
 (queue depth/total drops/no-buffer drops) 0/0/0
 (pkts output/bytes output) 0/0
 bandwidth 25% (384 kbps)

 Class-map: class-default (match-any)
 10 packets, 560 bytes
 5 minute offered rate 0 bps, drop rate 0 bps
 Match: any
 Queueing
 queue limit 64 packets
 (queue depth/total drops/no-buffer drops/flowdrops) 0/0/0/0
 (pkts output/bytes output) 10/560
 Fair-queue: per-flow queue limit 16
```

What is the correct value to use for the "DSCP for TelePresence Calls" Cisco CallManager service parameter?



- A. 28 (011100)
- B. 34 (100010)
- C. 41 (101001)
- D. 46 (101110)

**Correct Answer:** A

**Section:** (none)

**Explanation**

**Explanation/Reference:**

Explanation:

#### **QUESTION 70**

Which two statements about remote survivability are true? (Choose two.)

"Pass Any Exam. Any Time." - [www.actualtests.com](http://www.actualtests.com) 75  
Cisco 300-075 Exam

- A. SRST supports more Cisco IP Phones than Cisco Unified Communications Manager Express in SRST mode.
- B. Cisco Unified Communications Manager Express in SRST mode supports more Cisco IP Phones than SRST.
- C. MGCP fallback is required for ISDN call preservation.
- D. MGCP fallback functions with SRST.

**Correct Answer:** AD

**Section:** (none)

**Explanation**

**Explanation/Reference:**

Explanation:

#### **QUESTION 71**

Which two options enable routers to provide basic call handling support for Cisco Unified IP Phones if they lose connection to all Cisco Unified Communications Manager systems? (Choose two.)

- A. SCCP fallback
- B. Cisco Unified Survivable Remote Site Telephony
- C. Cisco Unified Communications Manager Express
- D. MGCP fallback
- E. Cisco Unified Communications Manager Express in SRST mode

**Correct Answer:** BE

**Section:** (none)

**Explanation**

**Explanation/Reference:**

Explanation:

**QUESTION 72**

When considering Cisco Unified Communications Manager failover, how many backup servers can be configured in a Cisco Unified Communications Manager Group?

- A. 1
- B. 5
- C. 2
- D. 4
- E. 3
- F. 6

**Correct Answer:** C

**Section:** (none)

**Explanation**

**Explanation/Reference:**

Explanation:

"Pass Any Exam. Any Time." - [www.actualtests.com](http://www.actualtests.com) 76  
Cisco 300-075 Exam

**QUESTION 73**

Which three CLI commands are used when configuring H.323 call survivability for all calls? (Choose three.)

- A. voice service voip
- B. telephony-service
- C. h323
- D. call preserve
- E. call-router h323-annexg
- F. transfer-system

**Correct Answer:** ACD

**Section: (none)**

**Explanation**

**Explanation/Reference:**

Explanation:

**QUESTION 74**

When configuring Cisco Unified Survivable Remote Site Telephony, which CLI command enables this feature on the router?

- A. call-manager-fallback
- B. ccm-manager redundant-host
- C. ccm-manager sccp local
- D. ccm-manager switchback

**Correct Answer: A**

**Section: (none)**

**Explanation**

**Explanation/Reference:**

Explanation:

**QUESTION 75**

How long is the default keepalive period for SRST in Cisco IOS?

- A. 45 sec
- B. 30 sec
- C. 60 sec
- D. 120 sec

**Correct Answer: B**

**Section: (none)**

**Explanation**

**Explanation/Reference:**

Explanation:

"Pass Any Exam. Any Time." - [www.actualtests.com](http://www.actualtests.com) 77  
Cisco 300-075 Exam

**QUESTION 76**

Which option is a valid test scenario to verify that Cisco Unified Communications Manager failover works and endpoints register with the backup call

manager?

- A. During a predetermined maintenance window, stop the Cisco IP Phone Services service on the primary Unified CM. Devices should reregister with the backup Unified CM in the Cisco CallManager Group.
- B. During a predetermined maintenance window, stop the Unified CM service on the Publisher. Devices should reregister with the backup Publisher in the Cisco CallManager Group.
- C. During a predetermined maintenance window, stop the TFTP service on the primary call manager. Devices should reregister with the backup Unified CM in the Cisco CallManager Group.
- D. During a predetermined maintenance window, stop the Unified CM service on the primary call manager. Devices should reregister with the backup Unified CM in the CallManager Group.

**Correct Answer:** D

**Section:** (none)

**Explanation**

**Explanation/Reference:**

Explanation:

#### **QUESTION 77**

Which three commands can be used to verify SRST fallback mode? (Choose three.)

- A. show telephony-service all
- B. show telephony-service ephone-dn
- C. show telephony-service ephone
- D. show telephony-service voice-port
- E. show telephony-service tftp-bindings

**Correct Answer:** ABC

**Section:** (none)

**Explanation**

**Explanation/Reference:**

Explanation:

#### **QUESTION 78**

Company X has a Cisco Unified Communications Manager cluster and a Cisco Unity Connection cluster at its head office and implemented SRST for its branch offices. One Monday at 2:00 pm, the WAN connection to a branch office failed and stayed down for 45 minutes. That day the help desk received several calls from the branch saying their voicemail was not working but they were able to make and receive calls.

"Pass Any Exam. Any Time." - [www.actualtests.com](http://www.actualtests.com) 78

Cisco 300-075 Exam

Why did the users not realize the WAN was down and prevented access to their voicemail?

- A. All the phones should have started ringing the instant the WAN connection failed to signal the start of SRST mode.
- B. All calls should have dropped when the WAN failed so users would be instantly aware.
- C. Although the phones were still working, the users should have noticed that the phone displays said "SRST Fallback Active".
- D. The voice administrators at the head office did not call the users to notify them.

**Correct Answer:** C

**Section:** (none)

**Explanation**

**Explanation/Reference:**

Explanation:

#### **QUESTION 79**

What are two important considerations when implementing TEHO to reduce long-distance cost? (Choose two.)

- A. on-net calling patterns
- B. E911 calling
- C. number of route patterns
- D. caller ID

**Correct Answer:** BD

**Section:** (none)

**Explanation**

**Explanation/Reference:**

Explanation:

#### **QUESTION 80**

When implementing a dial plan for multisite deployments, what must be present for SRST to work successfully?

- A. dial peers that address all sites in the multisite cluster
- B. translation patterns that apply to the local PSTN for each gateway
- C. incoming and outgoing COR lists
- D. configuration of the gateway as an MGCP gateway

**Correct Answer:** B

**Section:** (none)

**Explanation**

**Explanation/Reference:**

Explanation:

**QUESTION 81**

Which code snippet is required for SAF to be initialized?

- A. Service Family
  - B. External-Client
  - C. router eigrp
  - D. topology base
- "Pass Any Exam. Any Time." - www.actualtests.com 80  
Cisco 300-075 Exam

**Correct Answer:** C

**Section:** (none)

**Explanation**

**Explanation/Reference:**

Explanation:

**QUESTION 82**

When using SAF, how do you prevent multiple nodes in a cluster from showing up in the Show Advance section of the SAF Forwarder configuration?

- A. Configure the publisher node only in the SAF Forwarder configuration page.
- B. Append an @ symbol at the end of the client label value in the SAF Forwarder configuration page.
- C. Configure the correct node in the EIGRP configuration of the gateway router that is associated with the Cisco Unified Communications Manager node.
- D. Configure the SAF Security Profile Configuration to support only a single node.

**Correct Answer:** B

**Section:** (none)

**Explanation**

**Explanation/Reference:**

Explanation:

**QUESTION 83**

Which statement about the SAF Client Control is correct?

- A. The SAF Client Control is a configurable inherent component of Cisco Unified Communications Manager.



- B. The SAF Client Control is a non-configurable inherent component of Cisco Unified Communications Manager.
- C. The SAF Client Control is a non-configurable inherent component of the Cisco IOS Routers.
- D. The SAF Client Control is a configurable inherent component of the Cisco IOS Routers.

**Correct Answer:** B

**Section:** (none)

**Explanation**

**Explanation/Reference:**

Explanation:

#### **QUESTION 84**

If you want to delete a SAF-enabled trunk from Cisco Unified Communications Manager Administration, what must you do first?

- A. Disassociate the trunk from the CCD advertising service or CCD requesting service.  
"Pass Any Exam. Any Time." - www.actualtests.com 81  
Cisco 300-075 Exam
- B. Delete the trunk from the CCD requesting service node.
- C. Place the Cisco Unified Communications Manager node in standby mode.
- D. Redirect CCD advertising and requesting services to another Cisco Unified Communications Manager.

**Correct Answer:** A

**Section:** (none)

**Explanation**

**Explanation/Reference:**

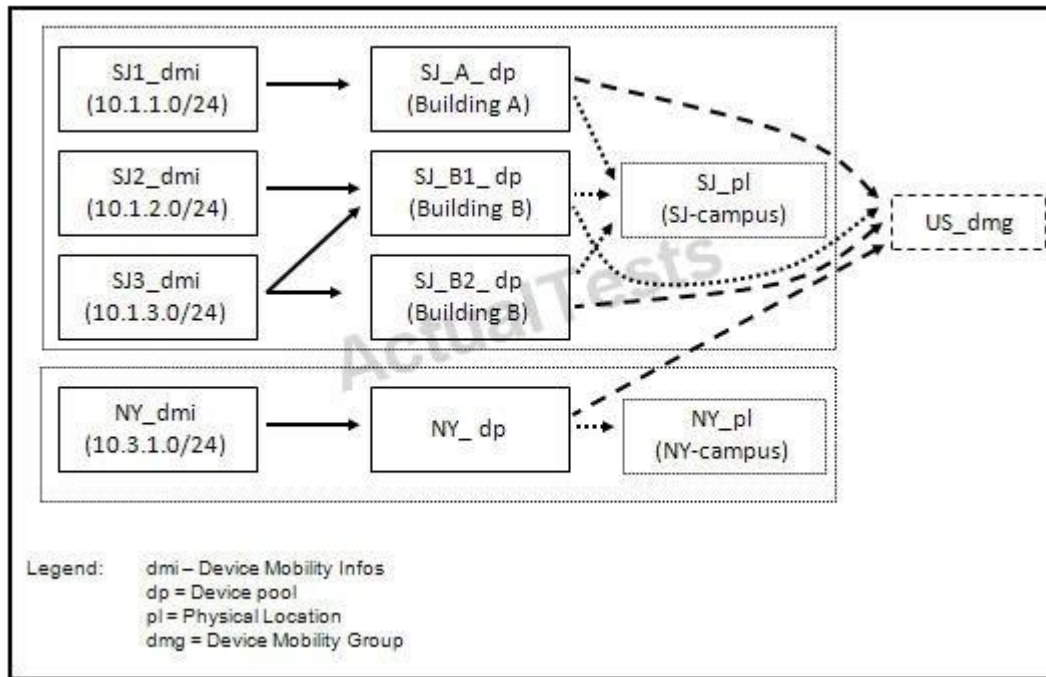
Explanation:

#### **QUESTION 85**

Refer to the exhibit.

"Pass Any Exam. Any Time." - www.actualtests.com 82

Cisco 300-075 Exam



If an IP phone in San Jose roams to New York, which two IP phone settings will be modified by Device Mobility so that the phone can place and receive calls in New York? (Choose two.)

- A. The physical locations are not different, so the configuration of the phone is not modified.
- B. The physical locations are different, so the roaming-sensitive parameters of the roaming device pool are applied.
- C. The device mobility groups are the same, so the Device Mobility-related settings are applied in addition to the roaming-sensitive parameters.
- D. The Device Mobility information is associated with one or more device pools other than the home device pool of the phone, so one of the associated device pools is chosen based on a round-robin load-sharing algorithm.
- E. The Device Mobility information is associated with the home device pool of the phone, so the phone is considered to be in its home location. Device Mobility will reconfigure the roaming-sensitive settings of the phone.

**Correct Answer:** BC

**Section:** (none)

**Explanation**

**Explanation/Reference:**

Explanation:

**QUESTION 86**

What happens when a user logs in using the Cisco Extension Mobility Service on a device for which the user has no user device profile?

- A. The Extension Mobility log in fails.
- B. The device takes on the default device profile for its type.  
"Pass Any Exam. Any Time." - www.actualtests.com 83  
Cisco 300-075 Exam
- C. The user can log in but does not have access to any features, soft key templates, or button templates.
- D. The device uses the first device profile assigned to the user in Cisco Unified Communications Manager.

**Correct Answer:** B

**Section:** (none)

**Explanation**

**Explanation/Reference:**

Explanation:

**QUESTION 87**

Which three steps are required when configuring extension mobility in Cisco Unified Communications Manager? (Choose three.)

- A. Create the extension mobility IP Phone Service.
- B. Check the Home Cluster checkbox on the End User Configuration page.
- C. Check the Enable Extension Mobility checkbox on the Directory Number Configuration page.
- D. Unsubscribe all other services from the Cisco IP Phone.
- E. Create a user Device Profile.
- F. Subscribe the extension mobility IP Phone Service to the user Device Profile.

**Correct Answer:** AEF

**Section:** (none)

**Explanation**

**Explanation/Reference:**

Explanation:

**QUESTION 88**

How many Cisco Unified Mobility destinations can be configured per user?

- A. 1
- B. 10

- C. 4
- D. 6

**Correct Answer:** B  
**Section:** (none)  
**Explanation**

**Explanation/Reference:**  
Explanation:

#### **QUESTION 89**

When configuring Cisco Unified Mobility, which parameter defines the access control for a call that reaches out to a remote destination?

"Pass Any Exam. Any Time." - [www.actualtests.com](http://www.actualtests.com) 84  
Cisco 300-075 Exam

- A. Calling Party Transformation Calling Search Space under Remote Destination Profile Information
- B. User Local under Remote Destination Profile Information
- C. Rerouting Calling Search Space under Remote Destination Profile Information
- D. Rerouting Calling Search Space under Remote Destination information
- E. Calling Search Space under Phone Configuration

**Correct Answer:** C  
**Section:** (none)  
**Explanation**

**Explanation/Reference:**  
Explanation:

#### **QUESTION 90**

Which two bandwidth management parameters are available during the configuration of Cisco Unified Communications Manager regions? (Choose two.)

- A. Default Audio Call Rate
- B. Max Audio Bit Rate
- C. Default Video Call Rate
- D. Max Video Call Bit Rate (Includes Audio)
- E. Max Number of Video Sessions

**Correct Answer:** BD

**Section: (none)**

**Explanation**

**Explanation/Reference:**

Explanation:

**QUESTION 91**

In Cisco Unified Communications Manager, where do you configure the default bit rate for audio and video devices?

- A. Enterprise Parameters
- B. Region under Region Information
- C. Cisco CallManager service under Service Parameter Configuration
- D. Enterprise Phone Configuration

**Correct Answer: C**

**Section: (none)**

**Explanation**

**Explanation/Reference:**

Explanation: