

Cisco.Premium.300-085.by.VCEPlus.186q

Number: 300-085 VCEplus  
Passing Score: 800  
Time Limit: 120 min  
File Version: 17.0



**Exam Code: 300-085**

**Exam Name:** Implementing Cisco Collaboration Applications

**Certification Provider:** Cisco

**Corresponding Certification:** CCNP Collaboration

**Website:** [www.vceplus.com](http://www.vceplus.com)

**Free Exam:** <https://vceplus.com/ccnp-exam-300-085/>

Questions & Answers Exam Engine is rigorously checked before being put up for sale. We make sure there is nothing irrelevant in 300-085 exam products and you get latest questions. We strive to deliver the best 300-085 exam product for top grades in your first attempt.

**Exam A****QUESTION 1**

The Cisco TMS administrator wants to test outbound calls that originate from a video device that is added to the Cisco TMS. Which path does the administrator use to complete this operation in the Cisco TMS interface?

- A. Systems > Navigator > Endpoint > Call Status tab in the endpoint configuration
- B. Phone Books > Dial External tab
- C. Booking > New Conference > Dial External tab
- D. Systems > Provisioning > Users > Call Status

**Correct Answer:** A

**Section:** (none)

**Explanation**

**Explanation/Reference:**

**QUESTION 2**

Which three system components are needed to provision a new endpoint in Cisco TMS? (Choose three.)

- A. IP address
- B. MAC address
- C. SNMP community name
- D. configuration template
- E. enable remote access
- F. persistent settings
- G. E164 alias
- H. gatekeeper

**Correct Answer:** ACE

**Section:** (none)

**Explanation**

**Explanation/Reference:**

**QUESTION 3**

Which Cisco Tele Presence Management Suite Extension supports automated AD/LDAP import of users for creating an entitlement of up to 100,000 users and devices?

- A. TMSXE
- B. TMSXN
- C. TMSAE
- D. TMSPE

**Correct Answer:** D

**Section:** (none)

**Explanation**

**Explanation/Reference:**

#### **QUESTION 4**

Which service can negatively impact the Cisco TMS ability to monitor a Cisco VCS?

- A. Telnet
- B. SNMP
- C. SSH
- D. TFTP

**Correct Answer:** B

**Section:** (none)

**Explanation**

**Explanation/Reference:**

#### **QUESTION 5**

Which jabber-config.xml variable do you use to allow remote Jabber users to connect using Collaboration Edge?

- A. <CollaborationEdge<ON>/CollaborationEdge>
- B. <RemoteAccess<ON>/RemoteAccess>
- C. <RemoteJabber<TRUE>/RemoteJabber>
- D. <Expressway>YES</Expressway>
- E. <AnyconnectVPN>TRUE</AnyConnectVPN>

**Correct Answer:** B

**Section:** (none)

**Explanation**

**Explanation/Reference:****QUESTION 6**

When configuring mobile and remote access, which three servers must be added manually to the HTTP server allow list on the Expressway-C or VCS-C? (Choose three.)

- A. Cisco Unity Connection
- B. contact photos web server
- C. Jabber update server
- D. Active Directory domain controller
- E. Outlook Web Access
- F. company intranet
- G. TFTP server

**Correct Answer:** ABC

**Section:** (none)

**Explanation**

**Explanation/Reference:**

**QUESTION 7**

Which two options in VCS-C and VCS-E handle presence status for registered endpoints? (Choose two.)

- A. back to back user agent
- B. presence user agent
- C. domain name system
- D. presence server
- E. presence proxy

**Correct Answer:** BD

**Section:** (none)

**Explanation**

**Explanation/Reference:**

**QUESTION 8**

Where is BFCP desktop video sharing enabled?

- A. trunk configuration
- B. gateway configuration
- C. gatekeeper configuration
- D. SIP profile
- E. phone services
- F. common phone profile
- G. ILS configuration
- H. SIP trunk security profile

**Correct Answer:** D

**Section:** (none)

**Explanation**

**Explanation/Reference:**

#### QUESTION 9

Where in Cisco Unified Communications Manager is BFCP enabled?

- A. enterprise phone configuration
- B. SIP trunk security profile
- C. SIP profile
- D. common phone profile
- E. common device configuration

**Correct Answer:** C

**Section:** (none)

**Explanation**

**Explanation/Reference:**

#### QUESTION 10

Which of the following services must be restarted in Cisco Unity Connection Serviceability once you configure the SMTP server?

- A. Connection Conversation Manager
- B. Connection Mixer

- C. Connection SNMP Agent
- D. Connection Administration
- E. No services need to be restarted

**Correct Answer:** A

**Section:** (none)

**Explanation**

**Explanation/Reference:**

#### **QUESTION 11**

By default, what are two options that are presented to callers for forwarded calls into a Cisco Unity Connection system? (Choose two.)

- A. Log in to their mailbox.
- B. Listen to the opening greeting.
- C. Leave a message if forwarder has a mailbox.
- D. Enter user ID and PIN.
- E. Log in to remote mailbox.

**Correct Answer:** BC

**Section:** (none)

**Explanation**

**Explanation/Reference:**

#### **QUESTION 12**

What is required of a user to retrieve voice mail once they are notified of a new message by Cisco Unity Connection Message notification on their mobile phone?

- A. Password
- B. PIN
- C. user ID
- D. user extension
- E. FAC

**Correct Answer:** B

**Section:** (none)

**Explanation**

**Explanation/Reference:**

**QUESTION 13**

After the initial Cisco Unity Connection installation, how and where can the time zone be changed?

- A. The Cisco Unity Connection time zone can be changed from the Cisco Unified Operating System Administration GUI.
- B. The Cisco Unity Connection time zone can be changed from the Cisco Unified Communications Manager GUI.
- C. The Cisco Unity Connection time zone can be changed from the Cisco Unified Operating System CLI.
- D. The Cisco Unity Connection time zone can be changed from the Cisco Unity Connection CLI.
- E. The Cisco Unity Connection time zone cannot be changed after the initial installation. A reinstallation is required.

**Correct Answer: D**

**Section: (none)**

**Explanation**

**Explanation/Reference:**

**QUESTION 14**

An IP phone user reports that they are unable to set the Call Forward All feature on their phone. The user reports that they press the CfwdAll softkey and enter the desired telephone number, but the phone does not accept it. What could be causing this issue?

- A. The user is entering too many digits for the destination number.
- B. Cisco Unified Communications Manager does not control Call Forward.
- C. The Call Forward All service parameter is not enabled.
- D. The Call Forward All option of the IP phone does not have a CSS defined.
- E. The Call Forward All enterprise parameter is not enabled.

**Correct Answer: D**

**Section: (none)**

**Explanation**

**Explanation/Reference:**

**QUESTION 15**

Which messaging interface provides support for an Apple iPhone, Android, and Blackberry?

- A. Cisco Unity Connection
- B. Cisco Unity Express
- C. Cisco Unity
- D. Cisco Unity Mobile

**Correct Answer:** A

**Section:** (none)

**Explanation**

**Explanation/Reference:**

#### **QUESTION 16**

Which tool is used to migrate users from Cisco Unity to Cisco Unity Connection?

- A. CSV import
- B. LDAP import
- C. Exchange Synch import
- D. COBRAS import
- E. Cisco Unity Migration Assistant

**Correct Answer:** D

**Section:** (none)

**Explanation**

**Explanation/Reference:**

#### **QUESTION 17**

Which type of video service does Cisco Unity Connection use to provide video services?

- A. multipoint control unit
- B. video control services
- C. conductor
- D. Cisco Presence Service
- E. MediaSense

**Correct Answer:** E

**Section:** (none)



**Explanation****Explanation/Reference:****QUESTION 18**

When troubleshooting an MWI issue in Cisco Unity Connection, which task should you perform in the phone system component at the beginning of troubleshooting?

- A. Ensure that MWI is enabled for the user.
- B. Ensure that the user has the correct phone system assigned.
- C. Run the Check Telephony Integration test.
- D. Ensure that the ports are configured for MWI only.
- E. Ensure that the pilot number matches the Cisco Unified Communications Manager configured pilot number.

**Correct Answer: C**

**Section: (none)**

**Explanation****Explanation/Reference:****QUESTION 19**

Which tool that is used for troubleshooting Cisco Unified Communications Manager is also used to troubleshoot and monitor Cisco Unity Connection?

- A. Cisco Unified Dialed Number Analyzer
- B. Cisco Unified Monitoring and Troubleshooting Tool
- C. Cisco Unified Real Time Monitoring Tool
- D. Cisco Unified Port Monitor
- E. Cisco Unified Serviceability

**Correct Answer: C**

**Section: (none)**

**Explanation****Explanation/Reference:****QUESTION 20**

What does the Primary Extension column define when importing users?

- A. the main extension that callers dial to reach a user
- B. the pilot number that is used by Cisco Unified Communications Manager Express to access Cisco Unity Express
- C. the mailbox ID that is assigned by Cisco Unity Express during import
- D. the primary extension that is to be used for CFNA and CFB

**Correct Answer:** A

**Section:** (none)

**Explanation**

**Explanation/Reference:**

#### **QUESTION 21**

You have configured a Cisco Unity Express server that uses the G.711 codec. You want to send outbound messages in a format that uses lower bandwidth. However, you want to keep the quality of the incoming message high. Which two tasks should you perform? (Choose two.)

- A. Convert the incoming messages to G.729a.
- B. Keep the incoming messages as G.711.
- C. Convert the outgoing message to 64 kb/s using G.729a.
- D. Convert the outgoing messages to G.726.
- E. Send the outgoing messages in the G.711 format.
- F. Store the message using the original codec, but convert it to 64 kb/s for outgoing.

**Correct Answer:** BD

**Section:** (none)

**Explanation**

**Explanation/Reference:**

#### **QUESTION 22**

Which email integration will allow a Lotus Notes client to retrieve emails from Cisco Unity Express?

- A. MIME
- B. SMTP
- C. JTAPI
- D. CTIQBE
- E. IMAP

F. Cisco Unity Express email infrastructure

**Correct Answer:** E

**Section:** (none)

**Explanation**

**Explanation/Reference:**

#### QUESTION 23

What is the maximum number of custom auto-attendant applications that you can set up in Cisco Unity Express?

- A. 1
- B. 2
- C. 3
- D. 4
- E. 5
- F. 6

**Correct Answer:** D

**Section:** (none)

**Explanation**

**Explanation/Reference:**



#### QUESTION 24

Which two parameters are required when you configure the Voice Profile for Internet Mail location on Cisco Unity Express? (Choose two.)

- A. domain name or IP address
- B. destination type
- C. display name
- D. location ID
- E. dial ID
- F. Simple Mail Transfer Protocol domain name

**Correct Answer:** AD

**Section:** (none)

**Explanation**

**Explanation/Reference:****QUESTION 25**

What is the maximum number of users that can be imported into Cisco Unity Express from Cisco Unified Communications Manager Express at one time?

- A. 200
- B. 100
- C. 500
- D. 50

**Correct Answer:** A

**Section:** (none)

**Explanation**

**Explanation/Reference:****QUESTION 26**

A user has reported that keys pressed when accessing Cisco Unity Express are not being acknowledged by the system. This configuration is found on the voice-enabled IOS router:

```
dial-peer voice 6800 voip
destination-pattern 5...
session protocol sipv2 session
target ipv4:10.3.6.127 codec g711ulaw
no vad
```

Which configuration command is needed to complete the configuration and solve the problem?

- A. dtmf-relay sip-notify
- B. dtmf-relay rtp-nte
- C. dtmf-relay cisco-rtcp
- D. dtmf-relay h245-signal

**Correct Answer:** A

**Section:** (none)

**Explanation**

**Explanation/Reference:**

**QUESTION 27**

An end user is complaining that when they try to retrieve their voicemail messages, they hear the message "mailbox is currently in use." What must the administrator do to resolve this issue?

- A. The administrator must reload the mailbox for the user.
- B. The administrator must verify that the mailbox is enabled.
- C. The administrator must verify that the primary extension that is associated with the end user is in an E.164 format.
- D. The administrator must unlock the mailbox for the user.

**Correct Answer:** D

**Section:** (none)

**Explanation**

**Explanation/Reference:**

**QUESTION 28**

In order for Cisco Unified Presence to show the presence status of an IP phone, which two configuration steps must be completed in the Cisco Unified Communications Manager server?  
(Choose two.)

- A. Check the Allow Presence Status check box.
- B. Associate the end device with the user.
- C. Allow the SIP publish trunk to forward presence status messages.
- D. Associate the directory number with the user.
- E. Enable Cisco Unified Personal Communicator Status flag.

**Correct Answer:** BD

**Section:** (none)

**Explanation**

**Explanation/Reference:**

**QUESTION 29**

What are four capabilities of Cisco Unified Presence user communication? (Choose four.)

- A. video conferencing

- B. web collaboration
- C. instant messaging
- D. basic audio
- E. advanced audio/web hosting
- F. automatic LAN configuration
- G. whiteboarding

**Correct Answer:** ABCD

**Section:** (none)

**Explanation**

**Explanation/Reference:**

### QUESTION 30

From which entity does a Cisco Unified Personal Communicator device receive its TFTP server address when it is integrated with a Cisco Unified Presence Server for failover?

- A. Cisco Unified Presence server
- B. Cisco Unified Communications Manager TFTP server
- C. Device profile in Cisco Unified Communication Manager
- D. Manually created upon installation of Cisco Unified Personal Communicator
- E. Cisco Unified Personal Communicator does not use TFTP.

**Correct Answer:** A

**Section:** (none)

**Explanation**

**Explanation/Reference:**

### QUESTION 31

Refer to the exhibit. Which Cisco Unified Personal Communicator status has the user selected?

```
19:03:12.009 |mapi_call 9
19:03:12.009 |calling cb NOT handled.
19:03:24.121 |Got Buffer (388) <route from='cm-1_jsmcp-1_xmppd-1@cm-1_jsmcp-1.cup-1/B4216880F' to='mblack@jsm-1.cup-1/A2D11298'><presence from='mblack@cisco.com/cucsf87397' id='Ejbs2-129'
to='mblack@cisco.com/composed'><show>dnd</show><presence entity='sip:mblack@cisco.com'
xmlns='urn:ietf:params:xml:ns:pidf'><person
id='mblack'><activities><dnd/></activities><class>manual</class></person></presence></route>
19:03:24.121 |DELIVER: type:8, host:jsm-1.cup-1, packet:<route from='cm-1_jsmcp-1_xmppd-1@cm-1_jsmcp-1.cup-1/B4216880F' to='mblack@jsm-1.cup-1/A2D11298'><presence from='mblack@cisco.com/cucsf87397' id='Ejbs2-129'
to='mblack@cisco.com/composed'><show>dnd</show><presence entity='sip:mblack@cisco.com'
xmlns='urn:ietf:params:xml:ns:pidf'><person
id='mblack'><activities><dnd/></activities><class>manual</class></person></presence></route>
```

- A. Available
- B. Do Not Disturb
- C. Away
- D. In a Meeting
- E. Out of Office

**Correct Answer:** B

**Section:** (none)

**Explanation**

**Explanation/Reference:**



### QUESTION 32

In Cisco Unified Communications Manager presence with SIP, if the presence entity resides within the Cisco Unified Communications Manager cluster, how does Cisco Unified Communications Manager respond to a SIP line-side presence request?

- A. by sending a SIP NOTIFY message to the presence watcher to indicate the current status of the presence entity
- B. by sending a SIP SUBSCRIBE message to the presence watcher to request the presence status of the indicated presence entity
- C. by sending SCCP messages to the presence watcher to indicate the current status of the presence entity
- D. by using the Cisco Unified Presence PUBLISH Trunk service parameter on Cisco Unified Communications Manager to associate the user with a line appearance

**Correct Answer:** A

**Section:** (none)

**Explanation**

**Explanation/Reference:**

### QUESTION 33

Which device needs to be configured to allow Cisco Unified Presence to receive phone availability updates from subscribed users?

- A. H.323 Trunk
- B. Presence Gateway
- C. MGCP Gateway
- D. SIP Cisco Unified Personal Communicator Gateway
- E. CTI Gateway

**Correct Answer:** B

**Section:** (none)

**Explanation**

**Explanation/Reference:**

#### QUESTION 34

A user reports that when they are using Cisco Unified Personal Communicator, their status does not change when they are on the phone. What is the typical cause of this issue?

- A. The username or password is invalid.
- B. The Cisco Unified Presence account is locked out.
- C. The user is not associated with the line.
- D. Cisco Unified Presence is not enabled for the user.
- E. Cisco Unified Presence is not enabled for the line.



**Correct Answer:** C

**Section:** (none)

**Explanation**

**Explanation/Reference:**

#### QUESTION 35

When troubleshooting a single Cisco Unified Presence user complaint, which is the Cisco recommended tool to start the troubleshooting process?

- A. Cisco Unified Real Time Monitoring Tool
- B. Cisco Unified Presence System Troubleshooter
- C. Cisco Unified Presence Monitoring Tool
- D. Cisco Unified Presence Viewer



**Correct Answer:** D

**Section:** (none)

**Explanation**

**Explanation/Reference:**

#### **QUESTION 36**

While attempting to enable the SIP publish trunk in Cisco Unified Presence, it is observed that there is no trunk that is displayed in the drop-down list. Which previous configuration step should be verified?

- A. Verify that the trunk has the correct IP address.
- B. Verify that the trunk has been enabled for SIP Notify.
- C. Verify that the Cisco Messaging Interface service has been started.
- D. Verify that the trunk was selected in the Cisco CallManager service parameters.
- E. Verify that the CUCM service was restarted after configuration.

**Correct Answer:** D

**Section:** (none)

**Explanation**

**Explanation/Reference:**



#### **QUESTION 37**

Which two of the following statements are true about VPIM? (Choose two)

- A. VPIM is used to exchange email messages between different voice-mail systems.
- B. voice-mail systems that are using VPIM must have unique extensions.
- C. VPIM must use a location ID for each voice-mail system.
- D. VPIM must be used when internetworking Cisco Unity Connection and Cisco Unity Express.
- E. VPIM users cannot be regular voice-mail users.
- F. VPIM message use a similar format to SIP SDP messages, as defined in RFC 3281.

**Correct Answer:** CD

**Section:** (none)

**Explanation**

**Explanation/Reference:**

**QUESTION 38**

Which three functions are executed using the Cisco TMS? (Choose three.)

- A. endpoint system upgrades
- B. edit call control
- C. manage phone books
- D. provision Jabber Instant Messaging
- E. create voicemail account
- F. create new conference

**Correct Answer:** ACF

**Section:** (none)

**Explanation**

**Explanation/Reference:**

**QUESTION 39**

Which Cisco TMS extension integrates Cisco TMS with IBM Lotus Domino Server 7.0.x, 8.0.x, 8.5.x?

- A. TMSXE
- B. TMSXN
- C. TMSBA
- D. TMSPE

**Correct Answer:** B

**Section:** (none)

**Explanation**

**Explanation/Reference:**

**QUESTION 40**

In Cisco TMS, the conference control center shows event logs in instance basis. Which two prefixes does the event log use to identify changes to series of single instances? (Choose two.)

- A. Conference
- B. Instance
- C. Error

- D. Information
- E. Event

**Correct Answer:** AB

**Section:** (none)

**Explanation**

**Explanation/Reference:**

#### **QUESTION 41**

Which three functionalities can be performed by Cisco TMS? (Choose three.)

- A. create conferences
- B. provide routing for the video media streams
- C. integrate with Cisco Unified Communications Manager through a SIP trunk
- D. monitor the system status of video endpoints and their logs
- E. run reports based on endpoint utilization
- F. perform bandwidth management for endpoints based on inter and intra location settings
- G. perform call routing decision for destinations that are not registered or local to the VCS

**Correct Answer:** ADE

**Section:** (none)

**Explanation**

**Explanation/Reference:**

#### **QUESTION 42**

Where do you navigate to within Cisco TMS to place a call?

- A. Systems > Navigator > Endpoint > Call Status
- B. Systems > Monitoring > Endpoint > Place Call
- C. Endpoint > Navigator > Call Status
- D. Booking > List Conferences > Place Call
- E. Systems > Navigator > Manage Dial Plan > Place Call
- F. Systems > Navigator > Provisioning > Place Call

**Correct Answer:** A

**Section: (none)**

**Explanation**

**Explanation/Reference:**

**QUESTION 43**

Which two protocols allow Cisco TMS to manage an EX60 endpoint? (Choose two.)

- A. H.323
- B. SNMP
- C. SMTP
- D. SIP
- E. HTTP/HTTPS
- F. RTCP

**Correct Answer: BE**

**Section: (none)**

**Explanation**

**Explanation/Reference:**



**QUESTION 44**

Which of the following is an option for using security when setting up a TMS conference?

- A. if possible
- B. Secure
- C. Best effort
- D. Mandatory

**Correct Answer: A**

**Section: (none)**

**Explanation**

**Explanation/Reference:**

**QUESTION 45**

The Cisco TMS administrator is trying to add participants while booking a new conference. Which three options are presented? (Choose three.)

- A. endpoints
- B. users
- C. Cisco MCUs
- D. multiway address
- E. directory numbers synched from Cisco Unified Communications Manager
- F. SIP URIs synched from Cisco Unified Communications Manager
- G. video AutoAttendant numbers

**Correct Answer:** ABC

**Section:** (none)

**Explanation**

**Explanation/Reference:**

#### QUESTION 46

Which three components are the minimum needed to enable the FindMe feature for the users of an enterprise? (Choose three.)

- A. Cisco TelePresence Management Suite
- B. Cisco TelePresence Management Suite Provisioning Extension
- C. Cisco Unified Communications Manager with Extension Mobility Service
- D. Video Communication Server
- E. Cisco IM and Presence
- F. Cisco Webex On Premises deployment
- G. Cisco TelePresence Conductor

**Correct Answer:** ABD

**Section:** (none)

**Explanation**

**Explanation/Reference:**

#### QUESTION 47

Which four pieces of information does the Cisco TMS Provisioning Extension service provide the VCS? (Choose four.)

- A. user
- B. device

- C. dial plan
- D. routing rules
- E. zone information
- F. phone book
- G. FindMe
- H. gateway

**Correct Answer:** ABFG

**Section:** (none)

**Explanation**

**Explanation/Reference:**

#### **QUESTION 48**

When Cisco TMS provisioning is enabled, which four Cisco TMSPE services are used by the VCS for provisioning and FindMe data? (Choose four.)

- A. server diagnostics
- B. devices
- C. users
- D. PLCM directory service
- E. FindMe
- F. live service
- G. database scanner service
- H. phone books



**Correct Answer:** BCEH

**Section:** (none)

**Explanation**

**Explanation/Reference:**

#### **QUESTION 49**

When you set up Cisco TMS for provisioning, which option must be configured and properly licensed?

- A. Cisco UCM
- B. Cisco TelePresence EX90
- C. Cisco VCS

D. Cisco Unity Connection

**Correct Answer:** C

**Section:** (none)

**Explanation**

**Explanation/Reference:**

#### QUESTION 50

Which three steps are necessary to configure Cisco VCS and TMS to support provisioning functionalities? (Choose three.)

- A. Activate LDAP synchronization on the VCS server to authenticate the end users.
- B. Activate provisioning by installing the Device Provisioning option key on the VCS.
- C. Create groups, users, and assign configuration templates and schemas to the groups on the Cisco TMS.
- D. Install FindME licenses on the Cisco TMS.
- E. Configure phone book sources.
- F. Configure a neighbor zone on VCS pointing to the TSMPE.
- G. Configure the authentication policy on VCS for zones and subzones to "Do not Check Credentials".

**Correct Answer:** ABD

**Section:** (none)

**Explanation**

**Explanation/Reference:**

#### QUESTION 51

Which four items are needed to provision a user for Cisco Unified Presence? (Choose four.)

- A. Client Services Framework device
- B. directory number
- C. mobility information
- D. voicemail account
- E. assign user to Cisco Unified Presence node
- F. UC service
- G. service profile

**Correct Answer:** AEFG

**Section: (none)**

**Explanation**

**Explanation/Reference:**

**QUESTION 52**

Which parameter must be set for the end user for Jabber for Windows or Mac to register successfully with Cisco Unified Communications Manager in softphone mode?

- A. primary extension
- B. group membership
- C. subscribe calling search space
- D. remote destination profiles
- E. device association

**Correct Answer: A**

**Section: (none)**

**Explanation**

**Explanation/Reference:**



**QUESTION 53**

When configuring a new Cisco Unified Personal Communicator device, which device type should be configured in Cisco Unified Communications Manager when using Cisco Unified Personal Communicator 8.X?

- A. Cisco Unified Personal Communicator
- B. Cisco IP SoftPhone
- C. Cisco IP Communicator
- D. Cisco Unified Client Services Framework
- E. It depends on the IP phone that is associated to the Cisco IP SoftPhone.

**Correct Answer: D**

**Section: (none)**

**Explanation**

**Explanation/Reference:**



**QUESTION 54**

In which two locations do you configure UDS contact lookups for Jabber clients? (Choose two.)

- A. LDAP directory
- B. enterprise parameters
- C. jabber-config.xml
- D. service parameters
- E. directory profile
- F. user device profiles
- G. call pickup group
- H. security

**Correct Answer:** CE

**Section:** (none)

**Explanation**

**Explanation/Reference:**

**QUESTION 55**

Which contact photo retrieval method is supported when using UDS as the directory for Jabber?

- A. photo URI, with pictures hosted on a web server
- B. binary object retrieval of the user's jpegPhoto attribute
- C. None, contact photos are not supported with UDS.
- D. binary object retrieval of the user's thumbnailPhoto attribute

**Correct Answer:** A

**Section:** (none)

**Explanation**

**Explanation/Reference:**

**QUESTION 56**

Cisco Unified Communications Manager is being integrated with Cisco Unity Connection using SCCP. What should the Device Name Prefix be on the Cisco Unity Connection server if the Cisco Unified Communications Manager voice mail server ports are configured using the name CiscoUM1?

- A. CiscoUM1
- B. CUCM

- C. CUCM-1
- D. CiscoUM1-VI
- E. CUCM-V1
- F. CiscoUM1-V1

**Correct Answer:** D

**Section:** (none)

**Explanation**

**Explanation/Reference:**

#### **QUESTION 57**

When using VPIM Networking for messaging between Cisco Unity servers in different directories, which two factors should be considered for Audio Format Conversion settings? (Choose two.)

- A. network bandwidth between the local and remote Cisco Unity servers
- B. traffic volume of messages
- C. network latency between the local and remote Cisco Unity servers
- D. Audio Format of the outbound message
- E. DSCP flags on the packet



**Correct Answer:** AB

**Section:** (none)

**Explanation**

**Explanation/Reference:**

#### **QUESTION 58**

The administrator of a Cisco Unity Connection system would like to set up a new employee and assign him a password of 123. The system gives him an error when he attempts to save the user.

Which two of the following settings sections and features of Cisco Unity Connection should the administrator change to set up the user? (Choose two.)

- A. User Template > Maximum Credential Length
- B. Authentication Rules > Minimum Credential Length
- C. User Template > Check for Trivial Passwords
- D. Restriction Tables > Minimum Credential Length
- E. Restriction Tables > Check for Trivial Passwords

F. Authentication Rules > Check for Trivial Passwords

**Correct Answer:** BF

**Section:** (none)

**Explanation**

**Explanation/Reference:**

#### QUESTION 59

In which two scenarios would a caller who is calling into the Cisco Unity Connection general pilot number hear the opening greeting of the voice-mail system and be prompted for a user ID and PIN? (Choose two.)

- A. non-subscriber
- B. subscriber who sends the calling number
- C. subscriber who does not send the calling number
- D. A SIP phone user will always be prompted for a user ID and PIN.
- E. An SCCP phone user will always be prompted for a user ID and PIN.
- F. The scenario is invalid.

**Correct Answer:** AC

**Section:** (none)

**Explanation**

**Explanation/Reference:**

#### QUESTION 60

By default, what are two options that are presented to callers for directed calls into a Cisco Unity Connection system? (Choose two.)

- A. Log in to their mailbox with their PIN.
- B. Listen to the opening greeting.
- C. Leave a message if forwarder has a mailbox.
- D. Enter user ID and PIN.
- E. Log in to remote mailbox.

**Correct Answer:** AD

**Section:** (none)

**Explanation**

**Explanation/Reference:****QUESTION 61**

Cisco Unified Communications Manager SIP integration with Cisco Unity Connection requires which configuration component to connect to voicemail?

- A. Route Pattern
- B. Hunt Group
- C. Route Group
- D. Hunt Pilot
- E. Trunk Group

**Correct Answer:** A

**Section:** (none)

**Explanation**

**Explanation/Reference:****QUESTION 62**

Cisco Unified Communications Manager SIP integration with Cisco Unity Connection requires which configuration component to connect to voice mail?

- A. Route Pattern
- B. Hunt Group
- C. Route Group
- D. Hunt Pilot
- E. Trunk Group

**Correct Answer:** A

**Section:** (none)

**Explanation**

**Explanation/Reference:****QUESTION 63**

Which troubleshooting tool is used to check and verify the individual modules in the Cisco Unified Presence server?

- A. Cisco Unified Real Time Monitoring Tool
- B. Cisco Unified Presence System Troubleshooter

- C. Cisco Unified Presence Monitoring Tool
- D. Cisco Unified Presence Viewer

**Correct Answer:** B

**Section:** (none)

**Explanation**

**Explanation/Reference:**

#### QUESTION 64

What is the next logical step in troubleshooting Cisco Unified Presence and Cisco Unified Personal Communicator in a live production environment if the Cisco Unified Presence System Troubleshooter and Server Health Tools do not help resolve the issue?

- A. Restart the Cisco Unified Presence server.
- B. Restart Cisco Unified Communications Manager.
- C. Enable tracing and use Cisco Unified RTMT to review the traces.
- D. Uninstall and re-install Cisco Unified Personal Communicator.
- E. Reset the Presence Gateway.

**Correct Answer:** C

**Section:** (none)

**Explanation**

**Explanation/Reference:**

#### QUESTION 65

Which two statements are true about integrating Cisco Unity Connection with an LDAP directory and creating users by importing data from Cisco Unified Communications Manager? (Choose two.)

- A. Cisco Unity Connection users will not automatically authenticate against the LDAP directory when Cisco Unified Communications Manager is integrated with the LDAP.
- B. Cisco Unity Connection users will automatically authenticate against the LDAP directory when Cisco Unified Communications Manager is integrated with the LDAP.
- C. Separate passwords must be maintained for Cisco Unity Connection web applications and Cisco Unified Communications Manager web applications.
- D. Automatic synchronization updates the Cisco Unity Connection database with new data for new and existing users when you add users to the LDAP directory.

**Correct Answer:** AC

**Section:** (none)

**Explanation**

**Explanation/Reference:**

**QUESTION 66**

Which three procedures are necessary to set up Cisco Unity Connection 8.x to use VPIM Networking? (Choose three.)

- A. Verify network and SMTP connectivity with the remote voice messaging system.
- B. Create VPIM regions.
- C. Create VPIM locations.
- D. Verify connectivity with the Cisco Unified Communications Manager.
- E. Configure DHCP.
- F. Create VPIM contacts.

**Correct Answer:** ACF

**Section:** (none)

**Explanation**

**Explanation/Reference:**



**QUESTION 67**

In which three of the following cases can VPIM Networking be used for messaging? (Choose three.)

- A. Cisco Unity systems where the partner Microsoft Exchange Servers are in different Active Directory forests
- B. Cisco Unity with Microsoft Exchange 2000 or Microsoft Exchange 2003, and Cisco Unity with Lotus Domino
- C. Cisco Unity and Cisco Unity Express
- D. Cisco Unity and the Cisco Presence Server
- E. Cisco Unity and Cisco Unified Communication Manager
- F. Cisco Unity and Cisco Unified Contact Center Express

**Correct Answer:** ABC

**Section:** (none)

**Explanation**

**Explanation/Reference:**

**QUESTION 68**

Which two of the following protocols can be used to integrate Cisco Unity Connection with Cisco Unified Communications Manager? (Choose two.)

- A. H.323
- B. SIP
- C. MGCP
- D. SCCP
- E. OSPF
- F. BGP

**Correct Answer:** BD

**Section:** (none)

**Explanation**

**Explanation/Reference:**

**QUESTION 69**

Which parameter is used to accommodate the local dial plan in Cisco Unity Connection when the Voice Profile for Internet Mail location is configured?

- A. Remote Phone Prefix
- B. Simple Mail Transfer Protocol Domain Name
- C. IP Address
- D. Display Name
- E. Dial ID
- F. Route Patterns

**Correct Answer:** A

**Section:** (none)

**Explanation**

**Explanation/Reference:**

**QUESTION 70**

The CEO of a company does not want external callers to be able to dial him directly through the Cisco Unity Connection directory search. Which of the following methods is the best way to accomplish this?

- A. Do not activate the CEO as a Cisco Unity Connection subscriber.

- B. Configure a directory call handler that blocks all transfers.
- C. Configure a directory handler that uses a partition and calling search space to allow calls to everyone except to the CEO.
- D. Use the preconfigured partition and calling search space. No other configuration is necessary.
- E. Configure a restricted partition and assign it to the CEO. Create a directory call handler for external users with a search scope that does not contain the CEO partition.

**Correct Answer:** E

**Section:** (none)

**Explanation**

**Explanation/Reference:**

#### **QUESTION 71**

How are partitions and calling search spaces in Cisco Unity Connection different from partitions and calling search spaces in Cisco Unified Communications Manager?

- A. In Cisco Unity Connection, search spaces do not include partitions.
- B. In Cisco Unity Connection, partitions include calling search spaces.
- C. In Cisco Unity Connection, partitions and calling search spaces are not used.
- D. In Cisco Unity Connection, partitions and calling search spaces function just as they do in Cisco Unified Communications Manager.
- E. In Cisco Unity Connection, only partitions are used.

**Correct Answer:** D

**Section:** (none)

**Explanation**

**Explanation/Reference:**

#### **QUESTION 72**

You need to configure Cisco Unity Connection in a cluster that will have four servers. One server will hold the publisher role. How many licenses do you need to configure Cisco Unity Connection successfully in a cluster?

- A. 1
- B. 2
- C. 3
- D. 4
- E. 5



F. 6

**Correct Answer:** B

**Section:** (none)

**Explanation**

**Explanation/Reference:**

#### QUESTION 73

You are troubleshooting Cisco Unity Connection and find that the interview handlers service does not play anything. You find that only Goodbye call handler is available. What must you verify before trying to fix the problem?

- A. Users and call handlers are placed in the correct partition.
- B. Phone language settings are correct.
- C. Users have selected the delist option.
- D. Questions are active and recorded.
- E. Dial plan has been set up correctly.
- F. Calls are routed when callers press "0".

**Correct Answer:** D

**Section:** (none)

**Explanation**

**Explanation/Reference:**

#### QUESTION 74

Which two of the following are Cisco Unity Connection components that, when changed, will not affect the settings of existing users? (Choose two.)

- A. Contact Templates
- B. Users Templates
- C. Enterprise Parameters
- D. Service Parameters
- E. Call Handlers

**Correct Answer:** AB

**Section:** (none)

**Explanation**

**Explanation/Reference:****QUESTION 75**

In Cisco Unity Connection, if a user is assigned the Help Desk Administrator role, which updates can that user make?

- A. Mailbox Database
- B. User Templates
- C. Reset User Passwords
- D. VPIM Credentials

**Correct Answer:** C

**Section:** (none)

**Explanation**

**Explanation/Reference:****QUESTION 76**

In Cisco Unity Connection, which three elements are used to provide call management? (Choose three.)

- A. Call Handlers
- B. Restriction Tables
- C. Schedules and Holidays
- D. Route Patterns
- E. Hunt Lists
- F. System Distribution Lists

**Correct Answer:** ABC

**Section:** (none)

**Explanation**

**Explanation/Reference:****QUESTION 77**

Which two statements about call routing on Cisco Unity Connection are true? (Choose two.)

- A. Call routing is done using route lists.
- B. Call routing is done using tables.

- C. Attempt Sign-In and Attempt Forward are both predefined direct routing rules.
- D. You cannot delete the predefined rules.
- E. Opening Greeting is always the first entry.

**Correct Answer:** BD

**Section:** (none)

**Explanation**

**Explanation/Reference:**

**QUESTION 78**

Refer to the exhibit. If George addresses a message by entering extension 3002, which match does Cisco Unity Connection return?

Search Space	Partitions (in order)
HQ_SS	NY, HQ
NY_SS	NY

User	Search Space	Alternate Extension	Partition
George	HQ_SS	3001	HQ
Bill	HQ_SS	3002	HQ
Alice	NY_SS	3002	NY

- A. Cisco Unity Connection returns Bill as the match.
- B. Cisco Unity Connection returns Alice as the match.
- C. Cisco Unity Connection returns both Alice and Bill as the match.
- D. Cisco Unity Connection randomly returns Alice or Bill as the match.

**Correct Answer:** B

**Section:** (none)

**Explanation**

**Explanation/Reference:**

**QUESTION 79**

Which two types of objects belong to a partition that is configured in Cisco Unity Connection? (Choose two.)

- A. directory handlers
- B. route patterns
- C. voicemail ports
- D. user alternate extensions
- E. forwarded rules

**Correct Answer:** AD

**Section:** (none)

**Explanation**

**Explanation/Reference:**

**QUESTION 80**

When creating new user accounts in Cisco Unity Connection, you want to allow users to add alternate extensions to access their voicemail. In which area of the menu do you do this?

- A. under the class of service
- B. under the class of service membership
- C. under the user templates
- D. under the contact templates

**Correct Answer:** A

**Section:** (none)

**Explanation**

**Explanation/Reference:**

**QUESTION 81**

Which two statements about Cisco Unity Connection video features are true? (Choose two.)

- A. The video greetings feature is not supported in an active-active cluster deployment over the WAN.
- B. The Cisco MediaSense server must be colocated with Cisco Unity Connection with less than 30 ms RTT latency.
- C. To avoid frozen video frames, Cisco Unity Connection and Cisco MediaSense must make use of a blanking file to fill the stream when they are not sending video.

- D. Cisco Unity Connection transcodes video greetings for endpoints with different resolutions.
- E. The Cisco MediaSense server transcodes video greetings for endpoints with different resolutions.

**Correct Answer:** AC

**Section:** (none)

**Explanation**

**Explanation/Reference:**

#### QUESTION 82

When importing users into Cisco Unity Connection by using AXL, what can cause a user not to be listed in the import view?

- A. if the user primary extension is set to "none" on Cisco Unified Communications Manager
- B. if the userdigest credentials are not set
- C. if the userwas imported into Cisco Unified Communications Manager by usingLDAP
- D. if the user is not assigned to the Standard CTI Enabled access control group on Cisco Unified Communications Manager

**Correct Answer:** A

**Section:** (none)

**Explanation**

**Explanation/Reference:**



#### QUESTION 83

The Cisco Unity Connection Serviceability menu provides which two troubleshooting functionalities? (Choose two.)

- A. viewing the status of the Cisco Unity Connection feature service
- B. generating reports that you can view in a range of formats, such as PDF, CSV, or HTML
- C. viewing trace information through the web browser
- D. providing an interface for the "starting and stopping" feature and network services
- E. monitoring the number of threads and processes that are in the system

**Correct Answer:** AB

**Section:** (none)

**Explanation**

**Explanation/Reference:**

**QUESTION 84**

Which two steps are required when configuring Cisco Unified Communications Manager in the Cisco Unity Express administration menu? (Choose two.)

- A. Select the IP addresses or hostnames of the Cisco Unified Communications Manager servers.
- B. Select the JTAPI username and password.
- C. Select the AXL username and password.
- D. Select the web username and password.
- E. Select the keepalive timers for Cisco Unified Communications Manager polling.

**Correct Answer:** AB

**Section:** (none)

**Explanation**

**Explanation/Reference:**

**QUESTION 85**

In Cisco Unity Express, which four Call Handling options can you configure on the Voice Mail tab of the GUI? (Choose four.)

- A. distribution list
- B. voice mail phone number
- C. business schedule
- D. maximum sessions
- E. voice mail language
- F. opening greeting
- G. voice mail operator number
- H. calling search space

**Correct Answer:** BDEG

**Section:** (none)

**Explanation**

**Explanation/Reference:**

**QUESTION 86**

How many distinct auto-attendants can you configure in the Cisco Unity Express GUI?

- A. 1
- B. 2
- C. 3
- D. 4
- E. 5
- F. 6

**Correct Answer:** E

**Section:** (none)

**Explanation**

**Explanation/Reference:**

#### QUESTION 87

After you import users from Cisco Unified Communications Manager Express to Cisco Unity Express, you find that some users are missing. Which two reasons might be causing this problem? (Choose two.)

- A. The username has numbers in the name.
- B. The username has spaces in the name.
- C. The ephone is missing the username and password.
- D. The ephone DN does not have the username and password.
- E. The username is longer than 15 characters.
- F. The ephone is not marked as active.



**Correct Answer:** BC

**Section:** (none)

**Explanation**

**Explanation/Reference:**

#### QUESTION 88

An external caller to your company's branch office hears an announcement that the branch office is closed, even though the call occurs during open hours. The user's voicemail is configured on a locally installed Cisco Unity Express system. Which two Cisco Unity Express GUI settings should a systems engineer verify, in order to fix the issue? (Choose two.)

- A. Check the Network Time & Time Zone settings on the System tab.
- B. Verify that the NTP Server settings are correct on the Configuration tab.

- C. Verify that the Business Hours settings on the System tab match the branch office open hours.
- D. Check that the Holiday settings on the System tab are correctly set for the branch office.
- E. Verify that the correct time schedule is configured for the Closed greeting for the end user's voicemail configuration on the Voice Mail tab.

**Correct Answer:** AC

**Section:** (none)

**Explanation**

**Explanation/Reference:**

#### **QUESTION 89**

Cisco Unified Communications Manager IM and Presence Service provides which three features? (Choose three.)

- A. integrated management
- B. Cisco Instant Sharing
- C. BLF presence
- D. instant messaging
- E. Microsoft Outlook calendar integration

**Correct Answer:** ADE

**Section:** (none)

**Explanation**

**Explanation/Reference:**

#### **QUESTION 90**

Which three statements about Cisco Unified Communications Manager IM and Presence Service are true? (Choose three.)

- A. Cisco Unified IM and Presence is enabled under Services on Cisco Unified Communications Manager, and it is a part of the Cisco Unified Communications Manager server.
- B. Cisco Unified IM and Presence is based on XMPP.
- C. XMPP is a Cisco proprietary protocol.
- D. Cisco Unified IM and Presence can run from the Cisco Cloud and can still use a local call control platform (in hybrid mode).
- E. Mobile devices such as iOS and Android devices are supported.
- F. Cisco Unified IM and Presence provide the user with chat, presence, and remote access features.

**Correct Answer:** BDE

**Section:** (none)



**Explanation****Explanation/Reference:****QUESTION 91**

In Cisco Unified Communications Manager IM and Presence Service, what is the role of the AXL/SOAP interface?

- A. It provides LDAP authentication for users of Cisco Jabber.
- B. It handles database synchronization by pulling information from the Cisco Unified Communications Manager database and populating the Cisco Unified Communications Manager IM and Presence Service database.
- C. It allows users to control their phones.
- D. It handles presence information exchange and instant messaging.

**Correct Answer: B**

**Section: (none)**

**Explanation****Explanation/Reference:****QUESTION 92**

Which protocol does Jabber use to communicate with the Cisco IM and Presence server when instant messages are sent and received?

- A. MSNP
- B. SIMPLE
- C. XMPP
- D. OSCAR

**Correct Answer: C**

**Section: (none)**

**Explanation****Explanation/Reference:****QUESTION 93**

When using Cisco Unified Communications Manager IM and Presence Service in a federated network configuration, which statement about Message Archiver is true?

- A. The sender cluster sends the message to the remote cluster before archiving it.

- B. Message Archiver is not supported in a federated network configuration.
- C. The sender cluster archives the message before sending it to the remote cluster.
- D. The message is archived on the remote cluster only.

**Correct Answer: C**

**Section: (none)**

**Explanation**

**Explanation/Reference:**

#### **QUESTION 94**

Which service parameter must be configured in Cisco Unified Communications Manager to enable SIP PUBLISH on a SIP trunk as the mechanism for presence interaction with Cisco Unified Presence?

- A. IM and Presence publish trunk
- B. route class trunk
- C. processing on QSIG trunk
- D. fail call over SIP trunk

**Correct Answer: A**

**Section: (none)**

**Explanation**

**Explanation/Reference:**

#### **QUESTION 95**

Which four configurations should you enable on Cisco Unified Communications Manager for integration with Cisco Unified Communications Manager IM and Presence Service? (Choose four.)

- A. Enable Cisco CallManager service
- B. Enable Cisco TFTP service
- C. Enable Cisco CTIManager service
- D. Enable Cisco AXL Web service
- E. Enable Cisco CARWeb service
- F. Enable Cisco Extended Functions service
- G. EnableCisco Instant Messenger service
- H. EnableCisco Unified Presence service

**Correct Answer:** ABCD

**Section:** (none)

**Explanation**

**Explanation/Reference:**

**QUESTION 96**

Which service must you restart, in order to enable file transfers on the Cisco Unified Communications Manager IM and Presence server?

- A. Cisco SIP Proxy
- B. Cisco Presence Engine
- C. Cisco XCP Router
- D. Cisco Sync Agent

**Correct Answer:** C

**Section:** (none)

**Explanation**

**Explanation/Reference:**



**QUESTION 97**

Which CCC action applies only to the Cisco TelePresence MPS Series?

- A. block fast update requests
- B. Status Duo Video
- C. move back
- D. release floor

**Correct Answer:** A

**Section:** (none)

**Explanation**

**Explanation/Reference:**

**QUESTION 98**

Which protocol is prioritized by Cisco TMS for conferencing?

- A. SIP
- B. MGCP
- C. H.323
- D. SCCP

**Correct Answer:** C

**Section:** (none)

**Explanation**

**Explanation/Reference:**

#### **QUESTION 99**

How does Cisco TMS set up a call with an endpoint that is registered with Cisco Unified Communications Manager and that is connected to Cisco VCS?

- A. Cisco TMS uses an IP dialing plan.
- B. Cisco TMS uses a SIP trunk.
- C. Cisco TMS removes the top-level domain from calls that go through Cisco Unified Communications Manager.
- D. Cisco TMS drops the call, because it can verify that the trunk between Cisco Unified Communications Manager and Cisco VCS is down.

**Correct Answer:** B

**Section:** (none)

**Explanation**

**Explanation/Reference:**

#### **QUESTION 100**

On Cisco TelePresence Management Suite, which two call control devices are supported for call control and setup? (Choose two.)

- A. Cisco Unified Communications Manager Express
- B. Cisco TelePresence Video Communication Server
- C. Cisco Unified Border Element
- D. Cisco Unified Communications Manager
- E. any SIP-capable call control system

**Correct Answer:** BD

**Section:** (none)

**Explanation**

**Explanation/Reference:****QUESTION 101**

Which three are valid system connectivity statuses for systems that are automatically added to Cisco TelePresence Management Suite? (Choose three.)

- A. Inaccessible
- B. Failed
- C. Connected
- D. Reachable on Public Internet
- E. Behind Firewall
- F. Online
- G. Remote Site

**Correct Answer:** ADE

**Section:** (none)

**Explanation**

**Explanation/Reference:****QUESTION 102**

To have a Provisioning menu section available on Cisco TelePresence Management Suite, what must you do?

- A. You must configure an active ISDN zone.
- B. You must install Cisco TelePresence Management Suite Provisioning Extension and activate it on the system.
- C. You must license Cisco TelePresence Management Suite Analytics Extension.
- D. You must set up Cisco TelePresence deployment to support Cisco CMR Hybrid.

**Correct Answer:** B

**Section:** (none)

**Explanation**

**Explanation/Reference:****QUESTION 103**

Which two actions must you take to enable provisioning on Cisco TMS and Cisco VCS? (Choose two.)

- A. Apply a Device Provisioning option key on Cisco VCS.
- B. Enable provisioning on Cisco VCS under Applications > Provisioning.
- C. Configure Users, FindMe, Phonebooks, and Devices individually, as these all have different settings.
- D. Configure a separate server to run provisioning extension services.
- E. Ensure that a service account is able to connect.
- F. Set the polling intervals on Users, FindMe, Phonebooks, and Devices to the same value, in order for the synchronization to work.

**Correct Answer:** AE

**Section:** (none)

**Explanation**

**Explanation/Reference:**

#### **QUESTION 104**

What must you do to activate the provisioning feature on a Cisco VCS endpoint?

- A. Install the Device Provisioning option key.
- B. Set a SIP trunk between Cisco VCS and Cisco Unified Communications Manager.
- C. Add the Cisco VCS on the Cisco TMS, and enable Cisco Extension Mobility.
- D. Install Cisco VCS Starter Pack Express.

**Correct Answer:** A

**Section:** (none)

**Explanation**

**Explanation/Reference:**

#### **QUESTION 105**

Refer to the exhibit. Which statement about the jabber-config.xml partial output is true?

```
- <Directory>
  <DirectoryServerType>UDS</DirectoryServerType>
  <PresenceDomain>cisco.com </PresenceDomain>
  <BDIPresenceDomain>cisco.com </BDIPresenceDomain>
  <UdsServer>10.255.10.10</UdsServer>
  <BaseFilter>(&(objectCategory=person))</BaseFilter>
  <BDIBaseFilter>(&(objectCategory=person))</BDIBaseFilter>
  <PredictiveSearchFilter>anr=</PredictiveSearchFilter>
  <BDIPredictiveSearchFilter>anr=</BDIPredictiveSearchFilter>
  <DisableSecondaryNumberLookups>0</DisableSecondaryNumberLookups>
  <BDIDisableSecondaryNumberLookups>0</BDIDisableSecondaryNumberLookups>
  <SearchTimeout>5</SearchTimeout>
  <BDISearchTimeout>5</BDISearchTimeout>
  <UseWildcards>0</UseWildcards>
  <BDIUseWildcards>0</BDIUseWildcards>
  <MinimumCharacterQuery>3</MinimumCharacterQuery>
  <BDIMinimumCharacterQuery>3</BDIMinimumCharacterQuery>
  <BDIUserANR>true</BDIUserANR>
  <BDIBDIUserANR>true</BDIBDIUserANR>
</Directory>
```

- A. 10.255.10.10 is the LDAP server address.
- B. The client connects to the directory server by using SSH.
- C. 10.255.10.10 is the Cisco Unified Communications Manager IM and Presence Service address.
- D. The client connects to the directory server by using HTTPS.

**Correct Answer: D**

**Section: (none)**

**Explanation**

**Explanation/Reference:**

#### QUESTION 106

The UDS for contact resolution is enabled in the service profile configuration of the Cisco Unified Communications Manager. Which action can you execute with your Jabber Desktop?

- A. modify users
- B. search users
- C. change users
- D. delete users

**Correct Answer:** B

**Section:** (none)

**Explanation**

**Explanation/Reference:**

**QUESTION 107**

Which profile must you add to an end user record, if the end user wants to access voicemail and wants to control a deskphone via CTI with Cisco Jabber?

- A. remote destination profile
- B. device profile
- C. SIP profile
- D. service profile
- E. phone service

**Correct Answer:** D

**Section:** (none)

**Explanation**

**Explanation/Reference:**



**QUESTION 108**

Which protocol in a SIP Profile Configuration must be enabled for adding an additional media stream to the existing audio and video streams to share a PowerPoint presentation with Jabber on a laptop?

- A. RSVP
- B. MTP
- C. TRP
- D. BFCP

**Correct Answer:** D

**Section:** (none)

**Explanation**

**Explanation/Reference:**



**QUESTION 109**

You want to use BFCP for video desktop sharing with Cisco Jabber clients that are registered on two different Cisco Unified Communications Manager clusters. Which option must you configure?

- A. On the SIP profile, select "Allow Presentation Sharing using BFCP."
- B. No option must be configured, because the feature works by default.
- C. Select "Allow Presentation Sharing Using BFCP" in the protocol-specific configuration section of the SIP phones (the CiscoUnified Client Services Framework device).
- D. On the SIP trunk security profile, select "Allow BFCP Protocol."
- E. On the SIP trunk, select "Allow BFCP Video Desktop Sharing."

**Correct Answer:** A

**Section:** (none)

**Explanation**

**Explanation/Reference:**

**QUESTION 110**

Refer to the exhibit. What can you determine from the Cisco Unity Connection configuration?



**New Port Group**

Phone System PhoneSystem ▼

Create From ☒ Port Group Type SIP ▼

☐ Port Group  ▼

**Port Group Description**

Display Name\* PhoneSystem-1

☐ Authenticate with SIP Server

Authentication Username

Authentication Password

Contact Line Name

SIP Security Profile 5060 ▼

SIP Transport Protocol TCP ▼

**Primary Server Settings**

IPv4 Address or Host Name 10.1.1.1 x

IPv6 Address or Host Name

Port 5060

Save

- A. 10.1.1.1 is the Cisco Unity Connection server IP address.
- B. Authentication must be enabled, or MWI is not displayed on the phones.
- C. 10.1.1.1 is the Cisco Unified Communications Manager server IP address.
- D. Cisco Unified Communications Manager voicemail ports must begin with "PhoneSystem."

**Correct Answer:** C

**Section:** (none)

**Explanation**

**Explanation/Reference:**

**QUESTION 111**

Which file are the DNS SRV records kept in within the Jabber client program files?

- A. DNS-records.xml
- B. jabberLocalConfig.xml
- C. installationid.txt
- D. service-location.xml
- E. jabber-config.xml
- F. csf-unified.txt

**Correct Answer:** D

**Section:** (none)

**Explanation**

**Explanation/Reference:**



**QUESTION 112**

A user reports that when calling an auto-attendant, they receive a fast busy signal. Which two options can cause this issue? (Choose two.)

- A. An improperly configured dial peer is in the Cisco Unified CME.
- B. The auto-attendant service is not running.
- C. No call-in number is specified for the auto-attendant.
- D. A prompt is missing in the auto-attendant.
- E. An improperly configured ephone-dn is in the Cisco Unified CME.

**Correct Answer:** AC

**Section:** (none)

**Explanation**

**Explanation/Reference:**

**QUESTION 113**

You are trying to add Cisco VCS to Cisco TMS, but the addition is failing. Which three scenarios might be causing this failure? (Choose three.)

- A. Cisco TMS is running a version earlier than 12.5.
- B. Cisco TMS was not upgraded before adding Cisco VCS.
- C. Cisco TMS and Cisco VCS do not have synchronized time settings.
- D. SNMP is not enabled on Cisco VCS.
- E. UDP port 161 is blocked on the network.
- F. The management address on Cisco VCS does not match the Cisco TMS IP address.

**Correct Answer:** DEF

**Section:** (none)

**Explanation**

**Explanation/Reference:**

**QUESTION 114**

Which two protocols permit collection information over user's availability status? (Choose two.)

- A. SIMPLE
- B. XMPP
- C. LDAP
- D. SOAP

**Correct Answer:** AB

**Section:** (none)

**Explanation**

**Explanation/Reference:**

**QUESTION 115**

When a user password is changed on Cisco Unified Communications Manager Express, how is that change propagated to Cisco Unity Express?

- A. The change is automatic; there is no Cisco Unity Express administrator intervention required.
- B. The user password in Cisco Unity Express does not need to match the user password in Cisco Unified Communications Manager Express because they are separate systems.
- C. The Cisco Unity Express administrator needs to change the password and PIN every time a change is made to the user account in Cisco Unified

Communications Manager Express.

- D. The Cisco Unity Express administrator needs to synchronize the user account in Cisco Unified Communications Manager Express by importing the user again.
- E. The Cisco Unity Express administrator needs to change the user password to match the password in Cisco Unified Communications Manager Express.

**Correct Answer:** E

**Section:** (none)

**Explanation**

**Explanation/Reference:**

#### **QUESTION 116**

A user that is logged into Cisco Jabber reports that their availability status is incorrect for most of the contacts in their contact list. Which four service traces give a correct indication of the issue? (Choosefour.)

- A. Cisco XCP Connection Manager
- B. Cisco XCP Router
- C. Cisco Presence Engine
- D. Cisco SIP Proxy
- E. Cisco Text Conferencing Manager
- F. Cisco Client Profile Agent
- G. Cisco XCP Web Connection Manager



**Correct Answer:** ABCE

**Section:** (none)

**Explanation**

**Explanation/Reference:**

#### **QUESTION 117**

Which protocol enables VCS-C system to be discovered by Cisco TMS?

- A. HTTP
- B. CDP
- C. SOAP
- D. SNMP

E. XMPP

**Correct Answer:** D

**Section:** (none)

**Explanation**

**Explanation/Reference:**

**QUESTION 118**

In Cisco Unity Connection, which two elements are used to provide call management? (Choose two.)

- A. Call Handlers
- B. Directory Handlers
- C. Route Patterns
- D. Hunt Lists
- E. Translation patterns

**Correct Answer:** AB

**Section:** (none)

**Explanation**

**Explanation/Reference:**



**QUESTION 119**

An engineer is setting up provisioning in VCS. Which two components must be in place? (Choose two.)

- A. No-charge option key for the VCS Control appliance
- B. One or more Movi option keys
- C. SMTP server that accepts relay from the TMS server
- D. A service account in Active Directory
- E. An external AD server that supports secure connections

**Correct Answer:** AB

**Section:** (none)

**Explanation**

**Explanation/Reference:**

**QUESTION 120**

You must create a services profile in Cisco Unified Communications Manager as part of the Jabber configuration. Which option is a UC service type?

- A. VPIM
- B. XML
- C. CTI
- D. LADP

**Correct Answer: C**

**Section: (none)**

**Explanation**

**Explanation/Reference:**

**QUESTION 121**

An engineer is creating a new cluster in TMS and has selected "Enable Provisioning." The following error message is seen: "Verify that the tmsprovisioningservice is running." What are two reasons for this issue?

- A. There is a space in the VCS system name
- B. Movi option key has not been added to the Cisco TMS
- C. SNMP has not been enabled on VCS
- D. UPD Port 161 has been blocked on the network
- E. The management address on the VCS does not match the TMS IP address

**Correct Answer: AB**

**Section: (none)**

**Explanation**

**Explanation/Reference:**

**QUESTION 122**

Where is BFCP desktop video sharing enabled?

- A. trunk configuration
- B. gateway configuration
- C. gatekeeper configuration
- D. SIP profile

- E. phone services
- F. common phone profile
- G. ILS configuration
- H. SIP trunk security profile

**Correct Answer:** D

**Section:** (none)

**Explanation**

**Explanation/Reference:**

#### **QUESTION 123**

You are setting up a Cisco TMS call that must have a dedicated bridge for scheduled conferences and shared-use backup bridges for both scheduled and nonscheduled conferences. Which two components must be set up to enable this call? (Choose two.)

- A. two pools, each with a single conference bridge
- B. one pool with a single bridge and one pool with multiple bridges
- C. enabled cascading
- D. two conference bridges, both used exclusively for scheduling
- E. at least one bridge for both scheduled and non-scheduled conferences
- F. capacity adjustment set to more than 100 percent in Cisco TMS

**Correct Answer:** BE

**Section:** (none)

**Explanation**

**Explanation/Reference:**

#### **QUESTION 124**

What are two types of integration between Cisco Unity Connection and Cisco Unified Communications Manager? (Choose two.)

- A. SCCP integration
- B. TIMG integration
- C. SIP integration
- D. PIMG integration
- E. H.323 integration



**Correct Answer:** AC

**Section:** (none)

**Explanation**

**Explanation/Reference:**

**QUESTION 125**

Which four call management capabilities are valid? (Choose four.)

- A. system call handlers
- B. operator handlers
- C. directory handlers
- D. receptionist handlers
- E. interview handlers
- F. custom recordings

**Correct Answer:** ACEF

**Section:** (none)

**Explanation**

**Explanation/Reference:**



**QUESTION 126**

An engineer is configuring Binary Floor Control Protocol for a CTS 3100. What are three required configuration items? (Choose three.)

- A. configure the VCS Zone
- B. configure the CUCM service parameters
- C. configure the SIP Profile
- D. configure the VCS Domain
- E. configure the Device Profile
- F. configure the SIP Trunk

**Correct Answer:** ACF

**Section:** (none)

**Explanation**

**Explanation/Reference:**

**QUESTION 127**

To which option does a partition in Cisco Unity Connection belong?

- A. mailbox store
- B. Unified Messaging service
- C. calling search space
- D. holidayschedule
- E. system call handlers

**Correct Answer:** C

**Section:** (none)

**Explanation**

**Explanation/Reference:**

**QUESTION 128**

Which two routing rules are available in Cisco Unity Connection call routing? (Choose two.)

- A. direct routing rules
- B. indirect routing rules
- C. bidirectional routing rules
- D. forwarded routing rules
- E. backward routing rules
- F. inbound routing rules
- G. outbound routing rules

**Correct Answer:** AD

**Section:** (none)

**Explanation**

**Explanation/Reference:**

**QUESTION 129**

Which tool do you visualize port utilization with on Cisco Unity Connection?

- A. Cisco Unified Real Time Monitoring Tool

- B. Cisco IP Phone
- C. Cisco Jabber client
- D. port
- E. port group
- F. Unified Messaging services
- G. speech connect port
- H. Cisco SDM

**Correct Answer:** A

**Section:** (none)

**Explanation**

**Explanation/Reference:**

#### **QUESTION 130**

Which set is a list of valid functions in Cisco TelePresence Management Suite?

- A. registration, reporting, provisioning, and remote control
- B. reporting, registration, provisioning, and asset management
- C. provisioning, reporting, asset management, and call control
- D. call control, asset management, reporting, and registration
- E. reporting and phonebook

**Correct Answer:** E

**Section:** (none)

**Explanation**

**Explanation/Reference:**

#### **QUESTION 131**

Which product enables a Cisco Jabber client to securely subscribe externally?

- A. Cisco VCS Expressway
- B. Cisco VCS Control
- C. Cisco TMS
- D. Cisco Unified Communications Manager

**Correct Answer:** A

**Section:** (none)

**Explanation**

**Explanation/Reference:**

**QUESTION 132**

Which protocol does Cisco Unified IM and Presence use to exchange phone presence information with Cisco Unified Communications Manager?

- A. XMPP
- B. CTI-QBE
- C. SIP
- D. WebDAV
- E. HTTPS
- F. IMPP

**Correct Answer:** C

**Section:** (none)

**Explanation**

**Explanation/Reference:**



**QUESTION 133**

Which three integration methods between Cisco Unity Connection and Cisco Unified Communications Manager are valid? (Choose three.)

- A. SIP
- B. ISDN
- C. SCCP
- D. H.323
- E. SIP to DMG/PIMG/TIMG
- F. RIP
- G. EIGRP
- H. IP

**Correct Answer:** ACE

**Section:** (none)

**Explanation**

**Explanation/Reference:**

**QUESTION 134**

Under System Settings in Cisco Unity Connection, where do you assign the cluster ID?

- A. general configuration
- B. cluster
- C. enterprise parameters
- D. service parameters
- E. licenses
- F. schedules
- G. roles
- H. authentication rules

**Correct Answer: C**

**Section: (none)**

**Explanation**

**Explanation/Reference:**



**QUESTION 135**

Which protocol does Jabber use to communicate with the Cisco IM and Presence server when instant messages are sent and received?

- A. MSNP
- B. SIMPLE
- C. XMPP
- D. OSCAR

**Correct Answer: C**

**Section: (none)**

**Explanation**

**Explanation/Reference:**

**QUESTION 136**

A company that wants to deploy Cisco Jabber is deciding whether to use UDS or EDI for contact resolution. Which three pieces of information should the

company consider? (Choose three.)

- A. SSO cannot be used with UDS.
- B. With EDI, Active Directory is the only LDAP server that can be used.
- C. Cisco Unified Communication Manager needs to be integrated with the LDAP server through both UDS and EDI.
- D. Queries to the LDAP server can be offloaded by using UDS.
- E. EDI uses native Windows APIs to retrieve contact data from the directory service.
- F. EDI is the contact source that is used for Cisco Expressway Mobile and Remote Access.

**Correct Answer:** CDE

**Section:** (none)

**Explanation**

**Explanation/Reference:**

#### QUESTION 137

In Cisco Unity Express, which two Call Handling options can you configure on the Voice Mail tab of the GUI? (Choose two.)

- A. distribution list
- B. application parameter settings script
- C. business schedule
- D. voice mail operator number
- E. calling search space



**Correct Answer:** BD

**Section:** (none)

**Explanation**

**Explanation/Reference:**

#### QUESTION 138

Which configuration will create a trigger for Cisco Unity Express so that when Cisco Unified Communications Manager Express callers dial extension 4001, they are connected with voice mail?

- A. ccn trigger jtapi phonenumber 4001application voicemailmax sessions 6end trigger
- B. ccn trigger sip phonenumber 4001application "voicemail"max sessions 2end trigger
- C. ccn trigger jtapi phonenumber 4001application autoattendantenabledmax sessions 6end trigger
- D. ccn trigger sip phonenumber 4001application "voicemail"enabledmax sessions 6end trigger

**Correct Answer:**

**Section: (none)**

**Explanation**

**Explanation/Reference:**

**QUESTION 139**

Which three types of integrations can Cisco TMS use to import users during provisioning?  
(Choose three.)

- A. Cisco Unified Communications Manager
- B. Cisco VCS
- C. Active Directory
- D. Secure Active Directory
- E. Cisco Unified Communications Manager IM and Presence Service
- F. Cisco Unity Connection
- G. LDAP

**Correct Answer:** CDG

**Section: (none)**

**Explanation**

**Explanation/Reference:**

**QUESTION 140**

An engineer has transitioned over to Telepresence-managed scheduling from direct- managed conference bridges in TMS and has begun to see failed calls and double- bookings of conferences. What should be done to fix this?

- A. Ensure the conference TelePresence Conductor is set as the preferred MCU
- B. Ensure future conferences on the bridges have been migrated
- C. Ensure the variable field has been manually configured
- D. Ensure cascading has been enabled

**Correct Answer:** B

**Section: (none)**

**Explanation**

**Explanation/Reference:**

**QUESTION 141**

Which two options does Cisco Unity Connection use to import users? (Choose two.)

- A. Cisco Unified Presence Server
- B. Cisco Unified Communications Manager
- C. VPN
- D. Cisco TMS
- E. LDAP Directory
- F. Prime

**Correct Answer:** BE

**Section:** (none)

**Explanation**

**Explanation/Reference:**

**QUESTION 142**

Which three client applications use the features of the Cisco Unified IM and Presence server? (Choose three.)

- A. Cisco UC Integration for Microsoft Lync (CUCI-Lync)
- B. Cisco IP Communicator
- C. Cisco Unified Personal Communicator
- D. Cisco IP SoftPhone
- E. Cisco Jabber for Windows or Mac
- F. Cisco Jabber Video for TelePresence
- G. Skype
- H. Cisco Jabber Voice for Android or iPhone

**Correct Answer:** ACE

**Section:** (none)

**Explanation**

**Explanation/Reference:**

**QUESTION 143**



You notice that a Cisco Unity Connection server is running low on disk space. You discover that users are not deleting their voicemail messages, causing mailboxes to become very large. Which two solutions can help to alleviate the storage issues? (Choose two.)

- A. quotas
- B. compression
- C. aging
- D. handlers

**Correct Answer:** AC

**Section:** (none)

**Explanation**

**Explanation/Reference:**

#### QUESTION 144

When configuring an IM and Presence server on the Expressway-C or VCS-C, which role must the user have for connecting to the IM and Presence server?

- A. Standard CTI Enabled
- B. Standard Serviceability Administration
- C. Standard AXL API Access
- D. Standard CCM Admin Users



**Correct Answer:** C

**Section:** (none)

**Explanation**

**Explanation/Reference:**

#### QUESTION 145

Which three options are used when setting up connectivity between Cisco Unified Communications Manager and Cisco Presence Server? (Choose three.)

- A. SIP trunk
- B. conference bridge
- C. SIP trunk security profile
- D. SIP profile

E. remote destination profile

**Correct Answer:** ACD

**Section:** (none)

**Explanation**

**Explanation/Reference:**

#### **QUESTION 146**

Which cascading-related benefit is an advantage of using TelePresence Conductor managed bridges?

- A. Participants can be moved between cascaded multipoint control units.
- B. Cascading is selected by using the Distribution options during booking.
- C. An alias that supports cascading is assigned to every conference.
- D. Cascading can be added for participants that exceed the initial capacity of the hosting bridges.

**Correct Answer:** D

**Section:** (none)

**Explanation**

**Explanation/Reference:**



#### **QUESTION 147**

Which two options are types of directory handlers? (Choose two.)

- A. voice-enabled
- B. phone keypad
- C. forwarded rules
- D. direct rules
- E. standard hours
- F. closed hours

**Correct Answer:** AB

**Section:** (none)

**Explanation**

**Explanation/Reference:**

**QUESTION 148**

In Cisco Unity Connection, which two options are predefined rules of forwarded call routing? (Choose two.)

- A. attempt forward
- B. attempt sign in
- C. attempt sign out
- D. speech connect
- E. publisher reverse trap
- F. opening greeting

**Correct Answer:** AF

**Section:** (none)

**Explanation**

**Explanation/Reference:**

**QUESTION 149**

Which two rules are the direct rules in Cisco Unity Connection? (Choose two.)

- A. Attempt Sign-in
- B. Opening Greeting
- C. Attempt Forward
- D. Attempt Sign-out
- E. Attempt Send
- F. Closing Greeting

**Correct Answer:** AB

**Section:** (none)

**Explanation**

**Explanation/Reference:**

**QUESTION 150**

You are integrating a Cisco Unity Connection server with a Cisco Unified Communications Manager phone system. You want to create multiple users with voice-mail accounts automatically from existing Unified Communications Manager users. Which Cisco Unity Connection menu feature should you use?

- A. Import Users feature
- B. Consolidated Object Backup and Restore Application Suite feature
- C. Cisco Voice Technology Group Subscription feature
- D. Bulk Administration tool feature
- E. Synch Users feature
- F. Task Management feature

**Correct Answer:** A

**Section:** (none)

**Explanation**

**Explanation/Reference:**

#### **QUESTION 151**

You are required to configure User Templates in Cisco Unity Connection. Which two parameters are mandatory to complete this configuration? (Choose two.)

- A. partition
- B. search scope
- C. alias
- D. class of service
- E. display name
- F. active schedule



**Correct Answer:** CE

**Section:** (none)

**Explanation**

**Explanation/Reference:**

#### **QUESTION 152**

In Cisco Unity Connection, to which three objects can a search space or scope be assigned? (Choose three.)

- A. Gateway
- B. MWI Number
- C. VPIM Location
- D. Trunk

- E. Call Handlers
- F. Directory number
- G. Routing Rules

**Correct Answer:** CEG

**Section:** (none)

**Explanation**

**Explanation/Reference:**

#### QUESTION 153

Refer to the exhibit. An IP phone user cannot log in to their Cisco Unity Connection voice mailbox with their PIN. Which command will most likely resolve the issue?

```
voice register pool 1
  id mac 0091.D998.4263
  type 7965
  number 1 dn 1
```



- A. dtmf-relay rtp-nte
- B. mgcp dtmf-relay CODEC all mode out-of-band
- C. dtmf-relay h245-alphanumeric
- D. dtmf-relay sip-notify

**Correct Answer:** A

**Section:** (none)

**Explanation**

**Explanation/Reference:**

#### QUESTION 154

Which two methods can be used to create multiple users in Cisco Unity Connection? (Choose two.)

- A. importing users from LDAP
- B. importing users from Cisco Unified Communications Manager
- C. creating users from Cisco Unity Express

D. creating users from Cisco Presence Server

**Correct Answer:** AB

**Section:** (none)

**Explanation**

**Explanation/Reference:**

#### QUESTION 155

Refer to the exhibit. Which six of the following commands are required to configure a dial peer that will allow voice-mail messages to be left on Cisco Unity Express for Unified Communications Manager Express users? The Cisco Unity Express module uses a pilot number of 4100. (Choose six.)

```
!  
interface Integrated-Service-Engine1/0  
  ip unnumbered Loopback0  
  service-module ip address 10.1.131.2  
  255.255.255.0  
  service-module ip default-gateway 10.1.131.1  
  no keepalive  
!
```

- A. destination-pattern 4100
- B. no vad
- C. session target ipv4:10.1.131.2
- D. codec transparent
- E. dial-peer voice 4100 pots
- F. codec g711ulaw
- G. session target ipv4:10.1.131.1
- H. dial-peer voice 4100 voip
- I. dtmf-relay sip-notify
- J. dtmf-relay h245-alphanumeric

**Correct Answer:** ABCFHI

**Section:** (none)

**Explanation**

**Explanation/Reference:**

**QUESTION 156**

What is the default number of maximum login attempts defined in the security password lockout policy in Cisco Unity Express?

- A. 3
- B. 5
- C. 8
- D. 10
- E. 24
- F. 30

**Correct Answer:** E

**Section:** (none)

**Explanation**

**Explanation/Reference:**

**QUESTION 157**

Which tool do you use to backup the entire Cisco Unity database and restore it as a whole to a new server?

- A. Backup and Restore Utility
- B. Consolidated Object Backup and Restore Application Suite briefcase mode
- C. COBRAS hot mode
- D. Cisco Unity Disaster Recovery Tools
- E. Cisco Config File Manager
- F. Cisco Automated Backup

**Correct Answer:** D

**Section:** (none)

**Explanation**

**Explanation/Reference:**

**QUESTION 158**

You have just installed Cisco Unity Express. Now you want to configure history depth and set it to its maximum value. Which value should you define as the maximum value?

- A. 5
- B. 10
- C. 15
- D. 20
- E. 50
- F. 75

**Correct Answer:** B

**Section:** (none)

**Explanation**

**Explanation/Reference:**

**QUESTION 159**

In Cisco Unity Connection, to which three objects can a partition be assigned? (Choose three.)

- A. Users
- B. Distribution Lists
- C. Route Patterns
- D. Directory Numbers
- E. VPIM Location
- F. Hunt Pilot
- G. Translation Pattern



**Correct Answer:** ABE

**Section:** (none)

**Explanation**

**Explanation/Reference:**

**QUESTION 160**

Which codec is supported in Cisco Unity Express?

- A. G.711
- B. G.721
- C. G.729



- D. Q.850
- E. Q.931
- F. Q.2931

**Correct Answer:** A

**Section:** (none)

**Explanation**

**Explanation/Reference:**

#### **QUESTION 161**

Which three components are necessary to import users into Cisco Unity Express from Cisco Unified Communications Manager Express? (Choose three.)

- A. Cisco Unified Communications Manager CLI administrator username and password
- B. IP address of the Cisco Unified Communications Manager Express device
- C. end users configured in the Cisco Unified Communications Manager Express database
- D. Cisco Unified Communications Manager web administrator user login
- E. JTAPI username and password

**Correct Answer:** BCD

**Section:** (none)

**Explanation**

**Explanation/Reference:**

#### **QUESTION 162**

Which two attributes are defined in class of service? (Choose two.)

- A. access to features, such as text-to-speech email or live reply
- B. access to the Cisco Presence Server administration page
- C. the minimum length of subscriber messages and greetings
- D. the maximum length of subscriber messages and greetings

**Correct Answer:** AD

**Section:** (none)

**Explanation**

**Explanation/Reference:****QUESTION 163**

Which application helps the Sales team take orders by collecting information from callers with a series of recorded questions and answers?

- A. Call Handler
- B. Directory Handler
- C. Interview Handler
- D. IVR Option
- E. Call Routing

**Correct Answer: C**

**Section: (none)**

**Explanation**

**Explanation/Reference:****QUESTION 164**

When Cisco Unity Express is integrated with Cisco CallManager, which protocol handles Message Waiting Indication?

- A. Session Initiation Protocol
- B. Voice Profile for Internet Mail
- C. Java Telephony Application Programming Interface
- D. Multipurpose Internet Mail Extensions
- E. VoIP
- F. Internet Message Access Protocol

**Correct Answer: C**

**Section: (none)**

**Explanation**

**Explanation/Reference:****QUESTION 165**

Cisco Unified Communications Manager IM and Presence Service provides which three features? (Choose three.)

- A. Business-to-business and business-to-consumer open federations

- B. Call Admission Control
- C. BLF presence
- D. Instant messaging
- E. Microsoft Outlook calendar integration

**Correct Answer:** ADE

**Section:** (none)

**Explanation**

**Explanation/Reference:**

#### **QUESTION 166**

When an Emergency Alternate Greeting (EAG) is activated, which two of the following statements describe how the EAG is accessed? (Choose two.)

- A. If it is active, the EAG is played before the welcome greeting of the system auto- attendant and the AtIGreeting.wav file is appended to the beginning of the welcome greeting.
- B. If it is active, the EAG is played before the welcome greeting of the system auto- attendant and a Boolean variable of "greetingactive" is returned as "true."
- C. If the EAG was recorded through the TUI and the EAG is active, the EAG overwrites the existing welcome greeting and the EAG is played until it is deactivated.
- D. If the EAG is included in custom auto-attendant scripts, a call to a subflow to checkaltgreet.aef must be inserted in the script at the desired location. If the EAG was recorded through the GUI, the new file replaces the existing welcome greeting and changes its name to WelcomeGreeting.old until the administrator deactivates the EAG and renames the existing welcome greeting.

**Correct Answer:** BD

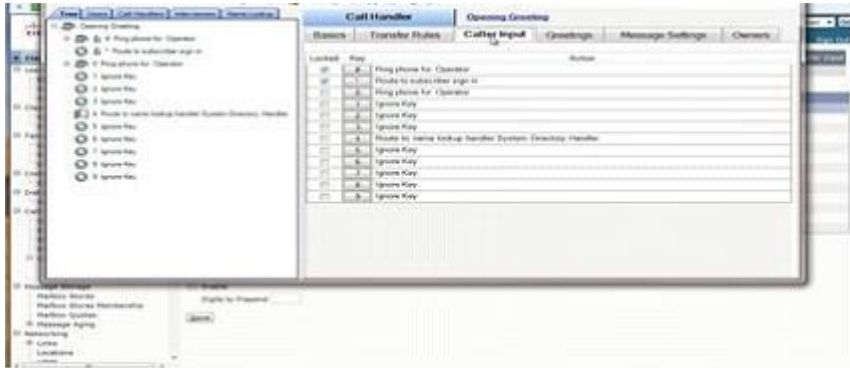
**Section:** (none)

**Explanation**

**Explanation/Reference:**

#### **QUESTION 167**

Refer to the exhibit. Which application is illustrated in the exhibit?



- A. Call Handler
- B. Interview Handler
- C. Audiotext Application Manager
- D. Audio Text Manager
- E. Job Handler

**Correct Answer: D**

**Section: (none)**

**Explanation**

**Explanation/Reference:**

#### QUESTION 168

With which client is the MWI synchronized with an IP phone after an email that contains a voice message is opened and the voice message is listened to?

- A. IMAP
- B. SMS
- C. Exchange
- D. POP3
- E. MMS

**Correct Answer: A**

**Section: (none)**

**Explanation**

**Explanation/Reference:****QUESTION 169**

What is the procedure for importing users from Cisco Unified Communications Manager Express into Cisco Unity Express?

- A. Create the username and password in Cisco Unified Communications Manager Express, configure Cisco Unity Express with the CLI administrator username and password, and use the CLI synchronization command under telephony-services to import as many users as are supported by Cisco Unified Communications Manager Express.
- B. Create the username and password in Cisco Unified Communications Manager Express, configure Cisco Unity Express with the web administrator username and password, and click Synchronize Information under the Administration menu to import as many users as are supported by Cisco Unified Communications Manager Express.
- C. Create the username and password in Cisco Unified Communications Manager Express, configure Cisco Unity Express with the CLI administrator username and password, and use the CLI synchronization command under telephony-services to import up to 200 users from Cisco Unified Communications Manager Express.
- D. Create the username and password in Cisco Unified Communications Manager Express, configure Cisco Unity Express with the web administrator username and password, and click Synchronize Information under the Administration menu to import up to 100 users from Cisco Unified Communications Manager Express.
- E. Create the username and password in Cisco Unified Communications Manager Express, configure Cisco Unity Express with the web administrator username and password, and click Synchronize Information under the Administration menu to import up to 200 users from Cisco Unified Communications Manager Express.

**Correct Answer:** E

**Section:** (none)

**Explanation**

**Explanation/Reference:****QUESTION 170**

An IP phone user dials into Cisco Unity Connection and hears the reorder tone. What could be the two possible issues? (Choose two.)

- A. The parameter Register with Session Initiation Protocol Server is not set on the trunk- group configuration page.
- B. The parameter Register with Session Initiation Protocol Server is not set on the port- group configuration page.
- C. The parameter Register with Session Initiation Protocol Server is not set on the hunt- group configuration page.
- D. The Cisco Unified Presence servers need to be sorted in the order in which the IP phones are registered.
- E. The Session Initiation Protocol servers need to be sorted in the order in which the IP phones are registered.
- F. The Cisco Unified Communications Manager servers need to be sorted in the order in which the IP phones are registered.

**Correct Answer:** BF

**Section:** (none)

**Explanation****Explanation/Reference:****QUESTION 171**

This configuration is found on the Cisco Unified Communications Manager Express router:

```
interface GigabitEthernet0/1
description Voice Network
ip address 172.31.12.1 255.255.255.0
interface Service-Engine1/0
description NM-CUE
ip unnumbered GigabitEthernet0/1
service-module ip address 172.31.12.254 255.255.255.0
service-module ip default-gateway 172.31.12.1
ip route 0.0.0.0 0.0.0.0 172.31.11.1
```

Which route is needed to complete this configuration?

- A. ip route 172.31.12.254 255.255.255.255 Service-Engine1/0
- B. ip route 172.31.12.254 255.255.255.255 172.31.12.1
- C. ip route 172.31.12.254 255.255.255.255 172.31.12.254
- D. ip route 172.31.12.254 255.255.255.255 172.31.11.1

**Correct Answer: A**

**Section: (none)**

**Explanation****Explanation/Reference:****QUESTION 172**

What is the proper format of a custom auto-attendant prompt?

- A. G.711 u-law,8 kHz, 8-bit, mono
- B. G.711 a-law,8 kHz, 16-bit, mono
- C. G.711 a-law,16 kHz, 8-bit, stereo
- D. G.729 ,8 kHz, 8-bit, mono

**Correct Answer: A**

**Section: (none)**

**Explanation**

**Explanation/Reference:****QUESTION 173**

Which two transfer types are used by Cisco Unity Connection to process more calls quickly? (Choose two.)

- A. No Holding Transfer
- B. Release to VPIM
- C. Supervise Transfer
- D. Release to Switch
- E. Say Good-Bye

**Correct Answer:** CD

**Section:** (none)

**Explanation**

**Explanation/Reference:****QUESTION 174**

When you integrate Cisco Unified Communications Manager and Cisco Unity Connection, which three important parameters must you configure in Unified Communications Manager? (Choose three.)

- A. route list
- B. Session Initiation Protocol trunk security profile
- C. Session Initiation Protocol route pattern
- D. route pattern
- E. SIP trunk
- F. device profile

**Correct Answer:** BDE

**Section:** (none)

**Explanation**

**Explanation/Reference:****QUESTION 175**

In Cisco Unity Connection, which two methods can you use to segregate the global dial and message addressing space? (Choose two.)

- A. SIP trunk
- B. search spaces
- C. route patterns
- D. translation patterns
- E. partitions
- F. hunt pilot

**Correct Answer:** BE

**Section:** (none)

**Explanation**

**Explanation/Reference:**

#### **QUESTION 176**

What is required on the Cisco Unified Presence server, when integrating Cisco Unified Presence with Cisco Unity Connection, in order for users to be allowed to view, play, sort, and delete voicemail messages?

- A. H.323 trunk
- B. XMPP connection
- C. SIP trunk
- D. AXL configuration
- E. Voicemail Profile



**Correct Answer:** E

**Section:** (none)

**Explanation**

**Explanation/Reference:**

#### **QUESTION 177**

Which tool is used to help determine the scale and performance of a Cisco Unified Presence multicluster deployment?

- A. Presence User Profile
- B. Presence Capacity Planning Tool
- C. Cisco Unified Real Time Monitoring Tool
- D. Cisco Unified Presence Serviceability
- E. Cisco Unified Serviceability



**Correct Answer:** A

**Section:** (none)

**Explanation**

**Explanation/Reference:**

#### **QUESTION 178**

When using integrated messaging with Cisco Unity Express, which capability is available to the end user?

- A. The ability to create, send, or reply to voice-mail messages from the email client.
- B. The ability to delete voice-mail messages or to mark them as read or unread, as they would for email messages.
- C. The ability to only mark voice-mail messages as read or unread, as they would for email messages.
- D. The ability to create, send, delete, or reply to voice-mail messages from the email client.

**Correct Answer:** B

**Section:** (none)

**Explanation**

**Explanation/Reference:**



#### **QUESTION 179**

Which methods can be used to change the name of a file that contains a new set of auto-attendant prompts?

- A. AvT, CLI, and GUI
- B. AvTandTUI
- C. CLI, GUI, and TUI
- D. CLI and GUI

**Correct Answer:** D

**Section:** (none)

**Explanation**

**Explanation/Reference:**

#### **QUESTION 180**

When manually configuring users in Cisco Unity Connection, what is the most efficient way of adding the user to the system?

- A. COBRAS
- B. Cisco Unity user templates
- C. Microsoft Active Directory
- D. Cisco Unity Migration
- E. LDAP

**Correct Answer:** B

**Section:** (none)

**Explanation**

**Explanation/Reference:**

#### **QUESTION 181**

What should be done after the initial configuration of the Cisco Unified Communications Manager and Cisco Unified Presence integration?

- A. Restart the Cisco SIP Proxy Server.
- B. Restart the Application Listener.
- C. Restart the Cisco Unified Presence Service.
- D. Restart the Cisco Unified Communications Manager Services.
- E. No action is required.

**Correct Answer:** C

**Section:** (none)

**Explanation**

**Explanation/Reference:**

#### **QUESTION 182**

When using Cisco Unity Connection, which call handler type offers different call actions based on the digits that are selected?

- A. digit analysis
- B. system
- C. directory
- D. interview
- E. call management

**Correct Answer:** B

Section: (none)

Explanation

Explanation/Reference:

**QUESTION 183**

Refer to the exhibit. In which three ways does the configuration need to be modified in Cisco Unified Communications Manager Express so that the administrator can open a session with Cisco Unity Express? (Choose three.)

```
!
interface Loopback0
  ip address 10.1.131.1 255.255.255.0
!
Output omitted for brevity
!
interface Integrated-Service-Engine1/0
  service-module ip address 10.1.132.2 255.255.255.0
  service-module ip default-gateway 10.1.131.1
  no keepalive
!
Output omitted for brevity

!
ip route 10.1.132.2 255.255.255.255 Integrated-Service-Engine1/0
!
```

- A. Edit the IP address of the service module.
- B. There is nothing wrong with the configuration. The Integrated-Service-Engine1/0 needs to be restarted.
- C. Edit the IP route statement to change the IP subnet mask to 255.255.255.0.

- D. Add the IP subnet mask to the service-module ip default-gateway statement.
- E. Edit the IP address in the IP route statement.
- F. Add the ip unnumbered Loopback0 command to interface Integrated-Service-Engine1/0.

**Correct Answer:** AEF

**Section:** (none)

**Explanation**

**Explanation/Reference:**

#### **QUESTION 184**

What is the difference between direct routing and forward routing in Cisco Unity Connection?

- A. origin of the call
- B. destination of the call
- C. on-net call
- D. off-net call
- E. There is no difference.

**Correct Answer:** A

**Section:** (none)

**Explanation**

**Explanation/Reference:**

#### **QUESTION 185**

After the Cisco Unified Presence server is defined in Cisco Unified Communications Manager, what is the next logical step in the configuration of Cisco Unified Communications Manager?

- A. assigns capabilities to end users
- B. AXL configurations
- C. define the CUCM publisher
- D. Activate CUP services
- E. define CUCM SIP publish trunk

**Correct Answer:** A

**Section:** (none)

**Explanation**

**Explanation/Reference:**

**QUESTION 186**

Which call handler can be configured to ask callers questions and, once the answers are recorded, sends them to a configured recipient?

- A. after-hours greeting
- B. alternate greeting
- C. standard greeting
- D. interview
- E. directory

**Correct Answer: D**

**Section: (none)**

**Explanation**

**Explanation/Reference:**