

## HP0-D30

Passing Score: 800  
Time Limit: 120 min  
File Version: 1.0

Prepared by

WASEEM AFZAL



**Exam A****QUESTION 1**

which tools allow you to view a topology thermal view of your data center

- A. HP Insight Control
- B. HP virtual Connect Enterprise Manager
- C. HP CloudSystem Console
- D. HP Cloud Service Management Console
- E. HP One View

**Correct Answer:** E

**Section:** (none)

**Explanation**

**Explanation/Reference:**

**QUESTION 2**

What is a benefit of an HP ConvergedSystem 700 over a do-it-yourself approach

- A. Customizable hardware configuration
- B. Fully disaster-tolerant solution
- C. Rnulti-vendor support
- D. Workload Optimization

**Correct Answer:** D

**Section:** (none)

**Explanation**

**Explanation/Reference:**

**QUESTION 3**

Which HP Management solution supports open integration by using REST APIs

- A. HP OneView
- B. HP insight Control

- C. H:P systems Insight Manager
- D. HP Virtual Connect Enterprise Manager

**Correct Answer:** A

**Section:** (none)

**Explanation**

**Explanation/Reference:**

#### QUESTION 4

What is a key benefit of an HP Converged Infrastructure solution

- A. It changes IT processes to align with current datacenter environments
- B. It provides separation of silos in datacenter management
- C. It provides security for shared environments
- D. It helps accelerate IT for better business result

**Correct Answer:** D

**Section:** (none)

**Explanation**

**Explanation/Reference:**



#### QUESTION 5

An existing HP CloudSystem Matrix customer wants to quickly integrate OpenStack into their environment.

- A. Manage the environment with HP Cloud Server Automation in a side-by-side architecture
- B. Manage the environment with HP Cloudsystem Matrix in a Parallel architecture
- C. Manage the environment with HP Cloudsystem foundation in a sidecar architecture
- D. Manage the environment with HP OpenStack in a vertical architecture

**Correct Answer:** A

**Section:** (none)

**Explanation**

**Explanation/Reference:**

**QUESTION 6**

A customer plan to deploy a new SAP platform and wants HP to manage the infrastructure. This customer is concerned about security and require that the application be maintained in their data center. Which HP cloud solution meets the customer's requirements?

- A. HP Cloudsystem Enterprise
- B. HP CloudSystem Foundation
- C. HP Helion Public Cloud
- D. HP Helion Managed Private Cloud

**Correct Answer:** D

**Section:** (none)

**Explanation**

**Explanation/Reference:**

**QUESTION 7**

How does infrastructure convergence enable organizations to accelerate time-to-business value

- A. It converges Software as a Service (SaaS) with Platform as a Service (PaaS) into a single solution
- B. It dramatically lowers CAPEX and OPEX by using a virtual appliance, thus eliminating the need for hardware resources.
- C. It increase operational efficiency by leveraging hybrid and public cloud offerings
- D. It turns technology silos into adaptive pools of assets that can be shared and managed as a service

**Correct Answer:** D

**Section:** (none)

**Explanation**

**Explanation/Reference:**

**QUESTION 8**

What are the goals of the HP Converged Infrastructure strategy (select two)

- A. out of box network automation
- B. aggregation portals

- C. Better data center utilization
- D. Reduced time spent on running and maintaining infrastructure

**Correct Answer:** CD

**Section:** (none)

**Explanation**

**Explanation/Reference:**

#### QUESTION 9

You are planning an HP CloudSystem solution for your customer. What demonstrates that the planned solution is valid, fulfills the needs of the customer, and can be integrated in the customer's environment?

- A. Reference Architecture
- B. Proof of Concept
- C. HP Flexible Capacity Analysis Tools
- D. HP Product Bulletin

**Correct Answer:** A

**Section:** (none)

**Explanation**

**Explanation/Reference:**



#### QUESTION 10

What is the HP CloudSystem software licensing based on? (Select two.)

- A. Number of active operating system instances
- B. the number of Network ports in your cloud
- C. Number of servers in your cloud
- D. the number of sockets in your cloud
- E. the amount of memory in your cloud

**Correct Answer:** AC

**Section:** (none)

**Explanation****Explanation/Reference:****QUESTION 11**

An SMB customer is interested in a cloud service model for their new application that reduce their requirements for hardware and ongoing IT support. Which cloud service model best fits the customer's requirements?

- A. private cloud
- B. IaaS
- C. SaaS
- D. hybrid cloud

**Correct Answer: C**

**Section: (none)**

**Explanation****Explanation/Reference:****QUESTION 12**

Match the term with its definition?

Monitoring:

The process of collecting server, storage, network and application availability and performance data

A set of actions that execute customer-specific IT tasks

The process of creating a service from a service template

Template: A design blueprint that specifies requirements for an infrastructure service

Workflow

The process of collecting server, storage, network and application availability and performance data

A set of actions that execute customer-specific IT tasks

The process of creating a service from a service template

A design blueprint that specifies requirements for an infrastructure service

Provisioning

The process of collecting server, storage, network and application availability and performance data

A set of actions that execute customer-specific IT tasks

The process of creating a service from a service template

A design blueprint that specifies requirements for an infrastructure service

Service Template

The process of collecting server, storage, network and application availability and performance data  
A set of actions that execute customer-specific IT tasks  
The process of creating a service from a service template  
A design blueprint that specifies requirements for an infrastructure service

- A. Monitoring:
- B. Workflow:
- C. Provisioning:
- D. Service Template:

**Correct Answer:** ABCD

**Section:** (none)

**Explanation**

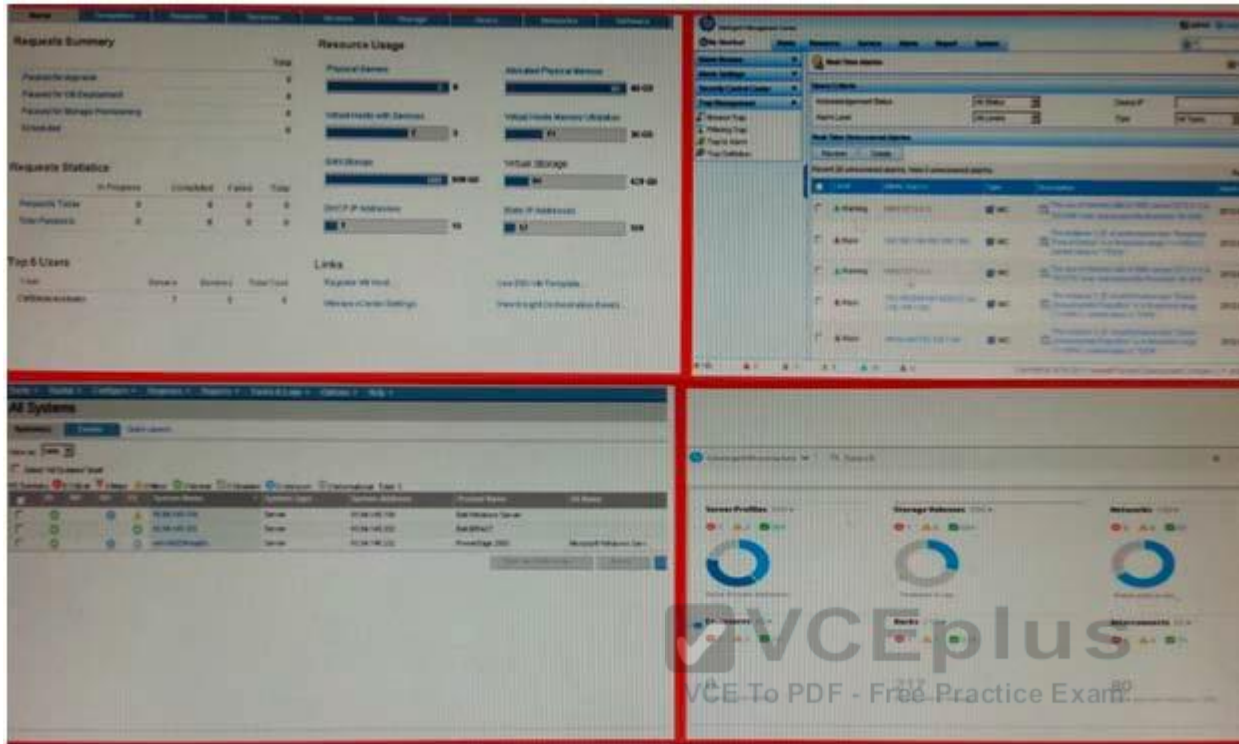
**Explanation/Reference:**

#### **QUESTION 13**

Select the screenshot that shows the management dashboard for HP OneView

**Exhibit:**





- A. All systems
- B. performance
- C. Dash board
- D. round circles

**Correct Answer: D**

**Section: (none)**

**Explanation**

**Explanation/Reference:**

#### QUESTION 14

An enterprise banking customer asks you to recommend a one-stop solution for their customer account representatives.



- A. HP BladeSystem Infrastructure Management
- B. HP ConvergedSystem 100 for Hosted Desktops
- C. HP CloudSystem Enterprise
- D. HP ConvergedSystem 100 for Hosted Desktops
- E. HP ConvergedSystem 300 for Vertica

**Correct Answer:** D

**Section:** (none)

**Explanation**

**Explanation/Reference:**

#### **QUESTION 15**

Which benefits does HP CloudSystem Foundation provide?

- A. enterprise-class lifecycle management for hybrid cloud services
- B. service marketplace to request cloud service through Cloud service automation
- C. Simple infrastructure services within minutes
- D. drag-and-drop designer for rapidly defining new multi-tier cloud services

**Correct Answer:** C

**Section:** (none)

**Explanation**

**Explanation/Reference:**

#### **QUESTION 16**

Which HP security solution provides in-line intruder protector for physical and virtual servers?

- A. ArcSight
- B. Fortify
- C. TippingPoint
- D. Network Automation

**Correct Answer:** C

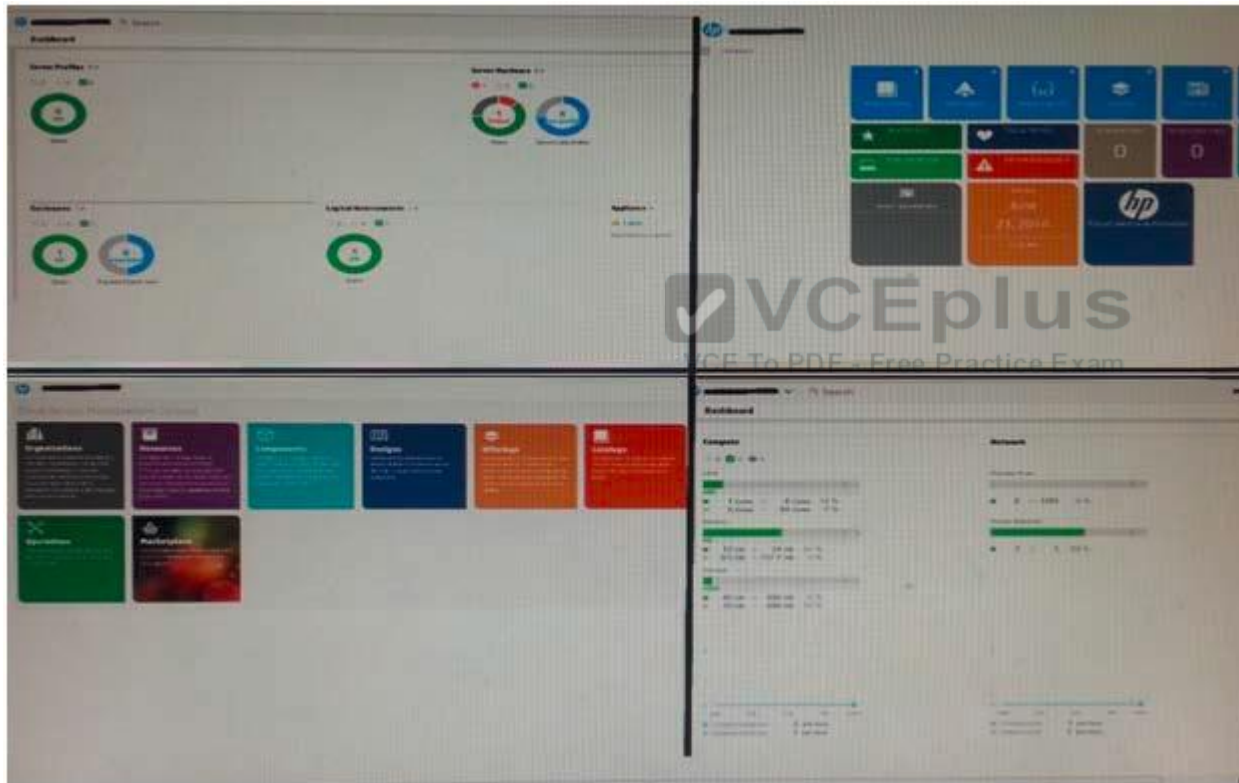
**Section: (none)**  
**Explanation**

**Explanation/Reference:**

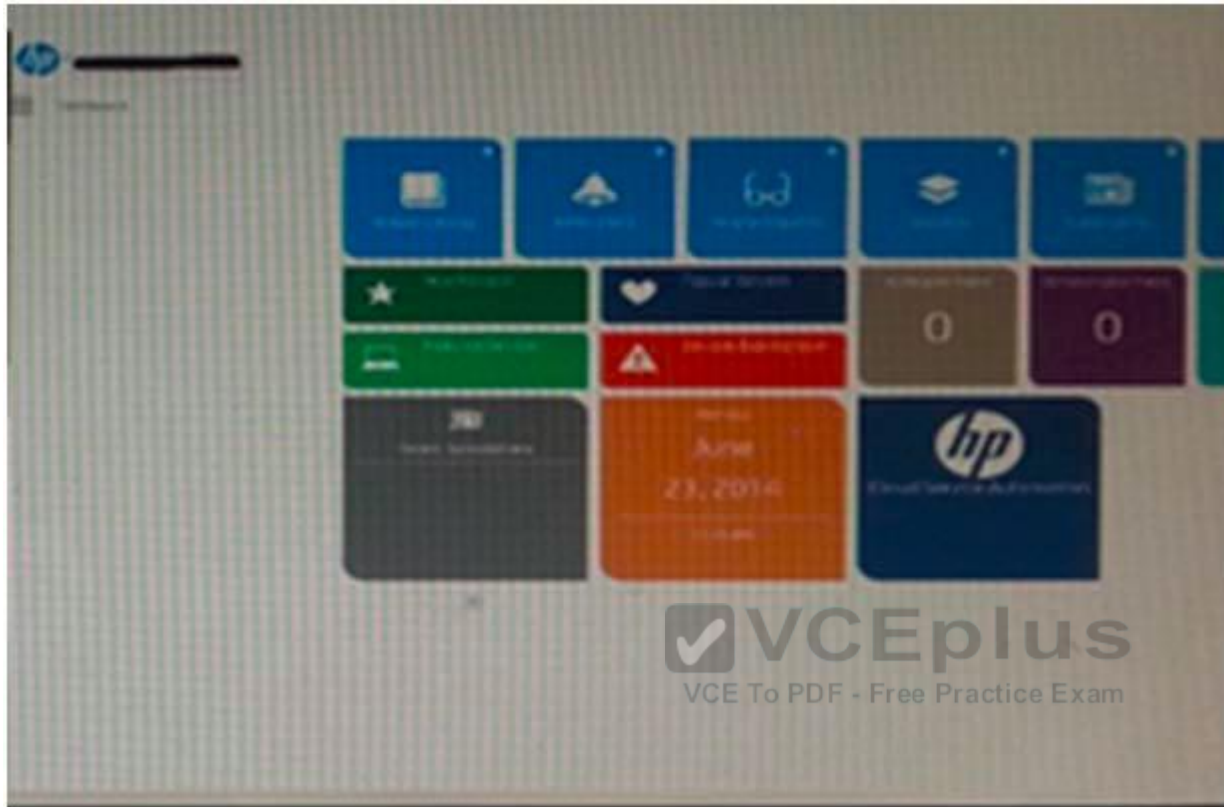
**QUESTION 17**

You have deployed HP CloudSystem Foundation, click on the screenshot that shows the consumer portal for this deployment.

Correct picture is selected

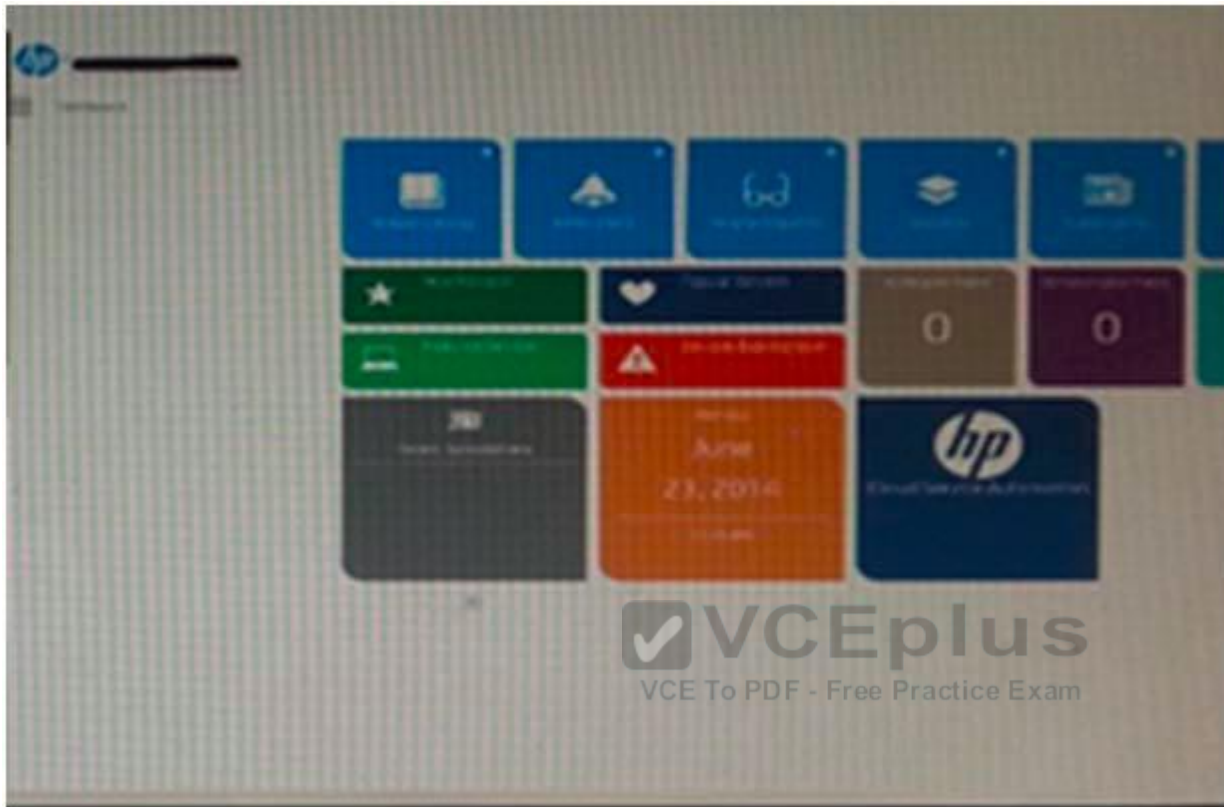


**Exhibit:**



- A.
- B.
- C.

D.



**Correct Answer:** D

**Section:** (none)

**Explanation**

**Explanation/Reference:**

**QUESTION 18**

In HP CloudSystem Foundation, which user interface is used to request a service ?

- A. HP Helion Portal
- B. HP CloudSystem Portal
- C. HP OneView

D. HP Cloudsystem Console

**Correct Answer:** B

**Section:** (none)

**Explanation**

**Explanation/Reference:**

#### QUESTION 19

Which HP ConvergedSystems forVirtualization does HP offer? (Select three)

- A. ConvergedSystem 100
- B. ConvergedSystem 700x
- C. ConvergedSystem 900
- D. ConvergedSystem 700
- E. ConvergedSystem 500
- F. ConvergedSystem 300

**Correct Answer:** BEF

**Section:** (none)

**Explanation**

**Explanation/Reference:**



#### QUESTION 20

A customer recently upgraded from HP CloudSystem Foundation to HP CloudSystem Enterprise?

- A. HP UCMDB
- B. Lifecycle management of hybrid cloud services function
- C. open APIs for administrative and cloud service functions
- D. Drag and drop designer
- E. HP CSA Marketplace Portal

**Correct Answer:** BDE

**Section:** (none)

**Explanation**

**Explanation/Reference:****QUESTION 21**

A customer wants to provide Infrastructure as a service (IaaS) for their internal windows and HP UX production environments. Which HP cloud solution should you recommend?

- A. HP CloudSystem Foundation
- B. HP CloudSystem Enterprise
- C. HP Helion Community Edition
- D. HP Managed Virtual Private Cloud

**Correct Answer: D**

**Section: (none)**

**Explanation**

**Explanation/Reference:****QUESTION 22**

A customer is evaluating FlexPod+ CIAC/UCS Director and asks you what comparable solution HP has to offer.

- A. HP CloudSystem Foundation
- B. HP Converged System for Virtualization
- C. HP Converged System for Vertica
- D. HP CloudSystem Enterprise

**Correct Answer: D**

**Section: (none)**

**Explanation**

**Explanation/Reference:****QUESTION 23**

A retail customer is deploying a new application for online ordering. They have statistics to show that usage of their existing IT infrastructure is less than 20% during most of the year, but spikes above 85% during the holiday season. Which feature of the HP Helion Cloud would reduce their expenses to support the new application?

- A. pay-per-use
- B. self-service
- C. high performance
- D. security

**Correct Answer:** A

**Section:** (none)

**Explanation**

**Explanation/Reference:**

#### **QUESTION 24**

Which features are provided by HP OneView?

- A. graphical infrastructure designer
- B. Firmware management and updates
- C. self-service portal
- D. Smart search and map view
- E. bursting to CloudSystem providers

**Correct Answer:** BD

**Section:** (none)

**Explanation**

**Explanation/Reference:**

#### **QUESTION 25**

Which HP storage products are integrated into the HP Converged Systems? (Select Two)

- A. HP XP7 array

- B. HP Enterprise Virtual Array
- C. HP StoreVirtual VSA
- D. HP MSA2040
- E. HP 3PAR StoreServ

**Correct Answer:** CE

**Section:** (none)

**Explanation**

**Explanation/Reference:**

#### QUESTION 26

Match each OpenStack component with its description?

Create secure and reliable storage  
Provision and manage virtual storage  
Catalog and store server templates  
Web-based user interface

- A. Swift:
- B. Nova:
- C. Glance:
- D. Horizon:



**Correct Answer:** ABCD

**Section:** (none)

**Explanation**

**Explanation/Reference:**

#### QUESTION 27

Which HP offering provides the customer with an out-of-the-box optimized hardware solution?

- A. HP Converged System
- B. HP Helion
- C. HP Cloudsystem Foundation



D. HP CloudSystem Enterprise

**Correct Answer:** A

**Section:** (none)

**Explanation**

**Explanation/Reference:**

#### **QUESTION 28**

HP OneView is used to manage which configuration settings?

- A. HP CloudSystem Enterprise
- B. Server BIOS
- C. HP Helion Cloud
- D. HP Virtual Connect
- E. HP CloudSystem Foundation
- F. Virtual Machine

**Correct Answer:** BD

**Section:** (none)

**Explanation**

**Explanation/Reference:**



#### **QUESTION 29**

Which technology reduces storage networking costs, speeds up provisioning, lowers latency, and reduces the number of components that must be configured in a converged infrastructure environment?

- A. virtual SAN technology
- B. Flat SAN technology
- C. hybrid SAN technology
- D. mesh SAN technology

**Correct Answer:** B

**Section:** (none)

**Explanation****Explanation/Reference:****QUESTION 30**

You are using HP OneView to manage a group of HP Virtual Connect (VC) modules. Which statement is true regarding Virtual Connect Enterprise Manager (VCEM) in this environment?

- A. VCEM can still be used to update the VC modules.
- B. VCEM is still required to manage fewer than four enclosures
- C. VCEM is no longer required
- D. You can now manage VCEM group that are located in different regions

**Correct Answer: C**

**Section: (none)**

**Explanation****Explanation/Reference:****QUESTION 31**

Which HP IT management platform can be used to provision server profiles?

- A. HP Helion OpenStack
- B. HP OneView
- C. HP CSA Portal
- D. HP Intelligent Management Center

**Correct Answer: B**

**Section: (none)**

**Explanation****Explanation/Reference:****QUESTION 32**

What are key features offered by HP converged system 700x for virtualization? (Select TWO)

- A. optional EMC storage
- B. Designed for growth
- C. Flexible configurations
- D. third-party SAN switching
- E. up to 16 HP BladeSystem c7000 enclosures

**Correct Answer:** BC

**Section:** (none)

**Explanation**

**Explanation/Reference:**

### QUESTION 33

A customer asks you to provide an HP cloud solution that can create, attach, detach, and route network connections to virtual machines with the built-in feature set of Software defined Networking, Which HP cloud solution should recommended ?

- A. HP Server Automation
- B. HP Cloud Server Maps
- C. HP Perations Orchestration
- D. HP CloudSystem Foundation

**Correct Answer:** D

**Section:** (none)

**Explanation**

**Explanation/Reference:**

### QUESTION 34

Which function is in the demand layer of the HP Cloud Functional Reference Architecture?

- A. Software Defined Networking
- B. service delivery

- C. infrastructure services
- D. Service Catalog and Repository

**Correct Answer:** D

**Section:** (none)

**Explanation**

**Explanation/Reference:**

#### **QUESTION 35**

What are the HP ConvergedSystem solutions for Big Data? (Select four.)

- A. ConvergedSystem for HBase
- B. ConvergedSystem for SAP HANA
- C. ConvergedSystem for Microsoft Analytics Platform
- D. ConvergedSystem for Cassandra
- E. ConvergedSystem for HAVEn
- F. ConvergedSystem for Vertica

**Correct Answer:** ACEF

**Section:** (none)

**Explanation**

**Explanation/Reference:**

#### **QUESTION 36**

Which technology enables customers to migrate storage volumes between any HP 3PAR storage system online

- A. HP 3PAR Thin Provisioning
- B. HP 3PAR Peer Persistence
- C. HP 3PAR StoreServ online Import
- D. HP 3PAR Peer Motion

**Correct Answer:** D

**Section:** (none)

**Explanation****Explanation/Reference:****QUESTION 37**

What is a key differentiator for HP ConvergedSystem 300 compared to much of the competition?

- A. multi-site recovery management included in solution
- B. multi-vendor hypervisor support in a single system
- C. HP Flat SAN technology
- D. Deployed at customers site within 20 days after order

**Correct Answer:** D

**Section:** (none)

**Explanation****Explanation/Reference:****QUESTION 38**

Which HP services are available for HP Converged Infrastructure solutions? (Select two.)

- A. HP Datacenter Care Services
- B. HP Proactive Care Services
- C. HP Helion Professional Services
- D. HP Converged Infrastructure Care services
- E. HP Helion Enterprise services

**Correct Answer:** AB

**Section:** (none)

**Explanation****Explanation/Reference:****QUESTION 39**

A customer tells you during a cloud workshop that they are interested in taking the most practical steps to move their traditional data center to a private

cloud.

Self service infrastructure

Virtualize and automate

Self service applications

Standardize and consolidate

- A. Standardize and consolidate
- B. Virtualize and automate
- C. Self service infrastructure
- D. Self service applications

**Correct Answer:** ABCD

**Section:** (none)

**Explanation**

**Explanation/Reference:**



#### QUESTION 40

A customer is implementing an HP cloud solution and has security concerns. Which HP product provides seamlessly integrated threat protection for virtualized environments?

- A. HP HAVEn framework
- B. HP TippingPoint Secure Virtualization Framework
- C. HP ArcSight
- D. HP Fortify

**Correct Answer:** B

**Section:** (none)

**Explanation**

**Explanation/Reference:**

#### QUESTION 41

Match the service model with its example?

PaaS: Server Running Windows  
Hosted Exchange  
LAMP Stack

IaaS: Server Running Windows  
Hosted Exchange  
LAMP Stack

SaaS:  
Server Running Windows  
Hosted Exchange  
LAMP Stack

- A. PaaS:
- B. IaaS:
- C. SaaS:
- D.

**Correct Answer:** ABC

**Section:** (none)

**Explanation**

**Explanation/Reference:**

PaaS: LAMP Stack

IaaS: Server Running Windows

SaaS: Hosted Exchange



#### **QUESTION 42**

Which user interface is used to assign a provider network to an instance in HP CloudSystem Foundation?

- A. HP Helian Portal
- B. HP CloudSystem Portal
- C. HP OneView
- D. HP CloudSystem Console

**Correct Answer:** D

**Section:** (none)

**Explanation**

**Explanation/Reference:****QUESTION 43**

A large service provider asks you to review their data center and make recommendations for improvement. During your review, you note that they have implemented a storage array for each of their internal customers. Which features of the HP 3Par StorServ could help them reduce their management overhead? (Select two.)

- A. Autonomic
- B. Multi-tenant
- C. scalable
- D. persistent
- E. meshed

**Correct Answer:** BE

**Section:** (none)

**Explanation**

**Explanation/Reference:****QUESTION 44**

What are the key business benefits of moving to a hybrid cloud? (Select two.)

- A. Cost-effective service delivery for peak demand
- B. outsourced third-party management
- C. ability to use an existing infrastructure
- D. government regulation compliance
- E. increased security

**Correct Answer:** AC

**Section:** (none)

**Explanation**

**Explanation/Reference:**



**QUESTION 45**

Which HP Storage solution uses a single architecture to deliver primary storage platforms for mid range, tier-1 enterprise, and optimized all flash array?

- A. HP XP7 Storage
- B. HP 3PAR StoreServ
- C. HP StoreVirtual
- D. HP Enterprise Virtual Array

**Correct Answer: B**

**Section: (none)**

**Explanation**

**Explanation/Reference:**

**QUESTION 46**

What is the definition of a network set in HP OneView?



- A. a set of Logical Interconnect Group
- B. a set of server profile
- C. A set of VLANs
- D. a set of network sownlink ports

**Correct Answer: C**

**Section: (none)**

**Explanation**

**Explanation/Reference:**

**QUESTION 47**

Which functionality does HP Cloudsystem Foundation provide?

- A. It provide a wried-once, virtual and highly scalable network fabric to consolidate the network infrastructure
- B. It integrates storage and networking at the administration level, as well as at the architect and user levels.

- C. It reduce and control energy usage by delivering power and cooling to the data center on demand
- D. It provides a common management platform that extends from infrastructure to application across servers, storage, and network

**Correct Answer:** B

**Section:** (none)

**Explanation**

**Explanation/Reference:**

#### **QUESTION 48**

A customer wants to be able to maintain consistent operating system patch levels. Which cloud system software component manages compliance and enforces software policies?

- A. Server Automation
- B. SiteScope
- C. Universal configuration Management Database
- D. Aggregation Platform for SaaS

**Correct Answer:** A

**Section:** (none)

**Explanation**

**Explanation/Reference:**

#### **QUESTION 49**

What abstracts the physical switched network and uses high-level policies instead of device-level configuration?

- A. Spanning Tree Protocol
- B. Software Defined Networking
- C. Virtual Connect
- D. VLAN tagging

**Correct Answer:** B

**Section:** (none)

**Explanation**

**Explanation/Reference:**

**QUESTION 50**

Which statements are true about the HP Helion portfolio of products and services? (Select two)

- A. It provide hybrid delivery
- B. It utilizes homogeneous resource pools
- C. It is always bundled hardware and software solution
- D. It is based on OpenStack (there is nothing called CloudStack)
- E. It is based on common open architecture

**Correct Answer:** AE

**Section:** (none)

**Explanation**

**Explanation/Reference:**



**QUESTION 51**

What is a defining characteristic of a hybrid cloud?

- A. private cloud externally managed
- B. support for multi-vendor hyervisors
- C. Internal resources and external providers
- D. support for both virtual and physical resource deployment

**Correct Answer:** C

**Section:** (none)

**Explanation**

**Explanation/Reference:**