

**70-743-demo**

Number: 000-000  
Passing Score: 800  
Time Limit: 120 min  
File Version: 1.0

**Version: 8.0**



## Exam A

### QUESTION 1

#### HOTSPOT

Your network contains an Active Directory forest. The forest contains two domain controllers named DC1 and DC2 that run Windows Server 2016. DC1 holds all of the operations master roles.

DC1 experiences a hardware failure.

You plan to use an automated process that will create 1000 user accounts.

You need to ensure that the automated process can complete successfully.

Which command should you run? To answer, select the appropriate options in the answer area.

#### Hot Area:

<input type="text"/>	-identity "DC2" -OperationMasterRole	<input type="text"/>	<input type="text"/>
Move-ADDirectoryServerOperatinMasterRole ntdsutil		PDCEmulator InfrastructureMaster RIDMaster SchemaMaster	Seize pdc -Force

#### Correct Answer:

<input type="text"/>	-identity "DC2" -OperationMasterRole	<input type="text"/>	<input type="text"/>
Move-ADDirectoryServerOperatinMasterRole ntdsutil		PDCEmulator InfrastructureMaster RIDMaster SchemaMaster	Seize pdc -Force

Section: (none)

Explanation

Explanation/Reference:

### QUESTION 2

#### HOTSPOT

Your network contains an Active Directory forest. The forest contains one domain named [contoso.com](http://contoso.com). The domain contains two domain controllers named DC1 and DC2. DC1 holds all of the operations master roles.

During normal network operations, you run the following commands on DC2:

Move-ADDirectoryServerOperationMasterRole -Identity "DC2" -OperationMasterRolePDCEmulator

Move-ADDirectoryServerOperationMasterRole -Identity "DC2" -OperationMasterRoleRIDMaster  
DC1 fails.

You remove DC1 from the network, and then you run the following command:

Move-ADDirectoryServerOperationMasterRole -Identity "DC2" -OperationMasterRoleSchemaMaster

For each of the following statements, select Yes if the statement is true. Otherwise, select No

**Hot Area:**

Statements	Yes	No
DC2 holds the schema master operations role.	<input type="radio"/>	<input type="radio"/>
DC2 holds the PDC emulator master operations role.	<input type="radio"/>	<input type="radio"/>
Currently, you can add additional domains to the forest.	<input type="radio"/>	<input type="radio"/>

**Correct Answer:**

Statements	Yes	No
DC2 holds the schema master operations role.	<input type="radio"/>	<input checked="" type="radio"/>
DC2 holds the PDC emulator master operations role.	<input checked="" type="radio"/>	<input type="radio"/>
Currently, you can add additional domains to the forest.	<input type="radio"/>	<input checked="" type="radio"/>

**Section: (none)**  
**Explanation**

**Explanation/Reference:**

### QUESTION 3

#### DRAG DROP

You install a new Nano Server named Nano1. Nano1 is a member of a workgroup and has an IP address of 192.169.8.10.

You have a server named Server1 that runs Windows Server 2016.

From Server1, you need to establish a Windows PowerShell session to Nano1.

How should you complete the PowerShell script? To answer, drag the appropriate cmdlets to the correct targets. Each cmdlet may be used once, more than once, or not at all. You may need to drag the split bar between panes or scroll to view content.

**Select and Place:**

Enable-PSRemoting

Enter-PSSession

Set-Item

Set-ItemProperty

Set-LocalUser

**\$ip = "192.168.1.10"**

**\$user = "Administrator"**

**WSMan:\localhost\Client\TrustedHosts  
"192.168.1.10"**

**-ComputerName \$ip -Credential \$user**

Correct Answer:

Enable-PSRemoting

Set-ItemProperty

Set-LocalUser

\$ip = "192.168.1.10"

\$user = "Administrator"

Set-Item

WSMan:\localhost\Client\TrustedHosts  
"192.168.1.10"

Enter-PSSession

-ComputerName \$ip -Credential \$user

Section: (none)  
Explanation

Explanation/Reference:

#### QUESTION 4

##### HOTSPOT

Your network contains an Active Directory domain named contoso.com. The domain contains a DNS server named Server1 configured to use a forwarder named [server2.contoso.com](#) that has an IP address of 10.0.0.10.

You need to prevent Server1 from using root hints if the forwarder is unavailable.

What command should you run? To answer, select the appropriate options in the answer area

Hot Area:

	▼
Suspend-DnsServerZone	
Set-DnsServer	
Set-DnsServerForwarder	
Set-DnsServerRootHint	

	▼
-Name *.* -PassThru	
-IPAddress 10.0.0.10	
-NameServer server2.contoso.com	
-UseRootHints. \$false	

**Correct Answer:**

	▼
Suspend-DnsServerZone	
Set-DnsServer	
Set-DnsServerForwarder	
Set-DnsServerRootHint	

	▼
-Name *.* -PassThru	
-IPAddress 10.0.0.10	
-NameServer server2.contoso.com	
-UseRootHints. \$false	

**Section: (none)**

**Explanation**

**Explanation/Reference:**

### QUESTION 5

You have a Nano Server named Nano1.

Which cmdlet should you use to identify whether the DNS Server role is installed on Nano1?

- A. Find-NanoServerPackage
- B. Get-Package
- C. Find-Package
- D. Get-WindowsOptionalFeature

**Correct Answer: B**

**Section: (none)**

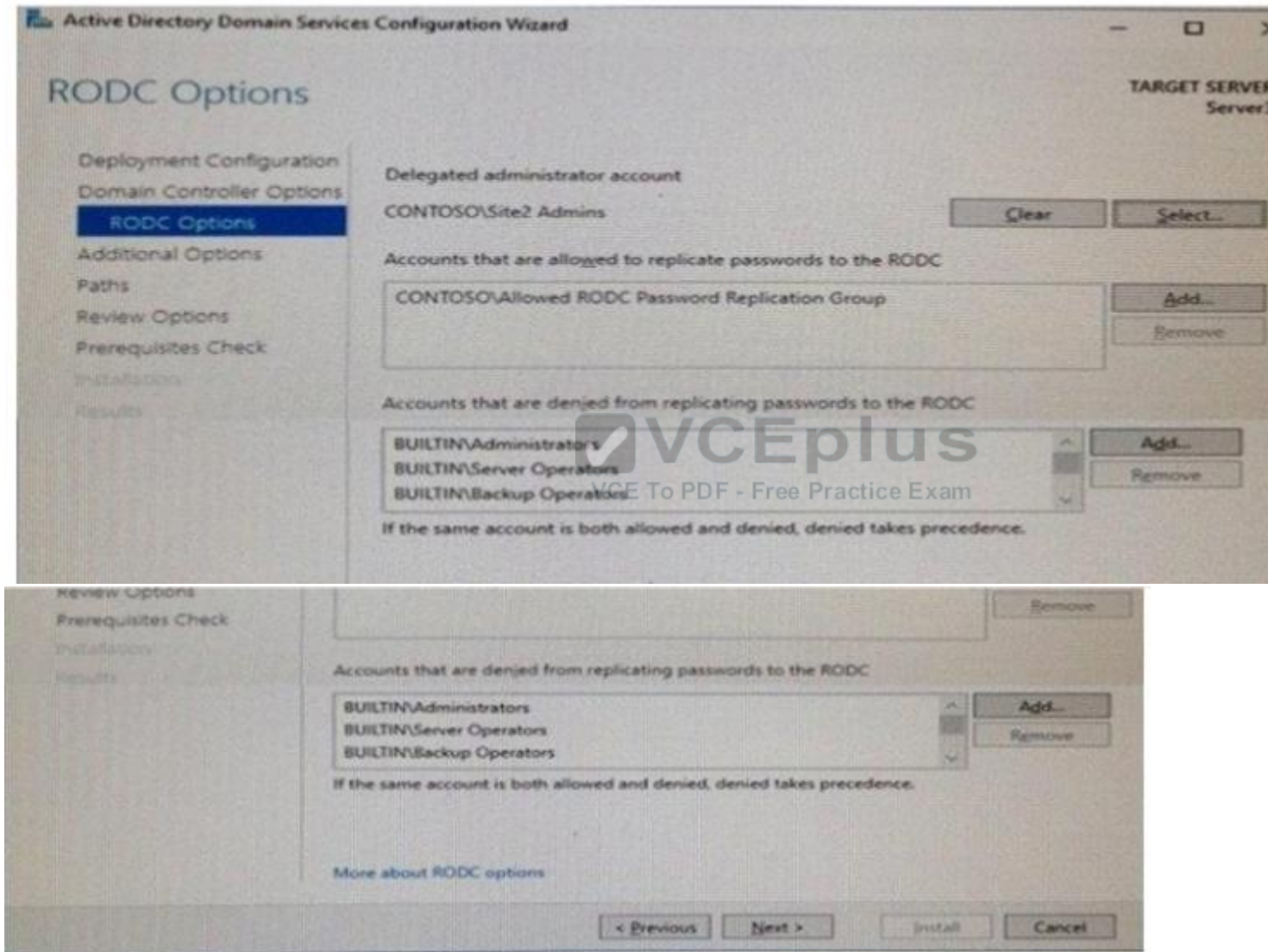
**Explanation**

**Explanation/Reference:**

### QUESTION 6

### HOTSPOT

Your network contains an Active Directory forest. The forest contains two sites named Site1 and Site2. Site1 contains 10 domain controllers. Site1 and Site2 connect to each other by using a WAN link. You run the Active Directory Domain Services Configuration Wizard as shown in the following graphic.



Server3 is the only server in Site2.

Use the drop-down menus to select the answer choice that completes each statement based on the information graphic.



Hot Area:

Members of the Site2 Admins group will be able to [answer choice] on Server 3.

	▼
make updates to SYSVOL content	
manage the password replication policy	
stop and start Active Directory Domain Services (AD DS)	

If the WAN link fails, users who are members of the Allowed RODC Password Replication Group [answer choice] in Site2.

	▼
will be prevented from logging on	
will log on with reduced security rights	
can log on if they have previously logged on	

Correct Answer:

Members of the Site2 Admins group will be able to [answer choice] on Server 3.

▼

make updates to SYSVOL content

manage the password replication policy

stop and start Active Directory Domain Services (AD DS)

If the WAN link fails, users who are members of the Allowed RODC Password Replication Group [answer choice] in Site2.

▼

will be prevented from logging on

will log on with reduced security rights

can log on if they have previously logged on

**Section: (none)**

**Explanation**

**Explanation/Reference:**

#### QUESTION 7

You deploy a Hyper-V server named Served in an isolated test environment The test environment is prevented from accessing the Internet Server1 runs the Datacenter edition of Windows Server 2016.

You plan to deploy the following guest virtual machines on the server

Quantity	Operating system	Domain member
10	Windows Server 2012 R2	Yes
4	Windows Server 2016	No
5	Windows Server 2016	Yes

Which activation model should you use for the virtual machines'?

- A. Multiple Activation Key (MAK)
- B. Automatic Virtual Machine Activation (AVMA)
- C. Original Equipment Manufacturer (OEM) key
- D. Key Management Service (KMS)

**Correct Answer:** B

**Section:** (none)

**Explanation**

**Explanation/Reference:**

### QUESTION 8

#### HOTSPOT

Your network contains an Active Directory domain named contoso.com. The domain contains a DNS server named Server1. You enable Response Rate Limiting on Server1. You need to prevent Response Rate Limiting from applying to hosts that reside on the network of 10.0.0.0/24. Which cmdlets should you run? To answer, select the appropriate options in the answer area

**Hot Area:**

**First cmdlet to run:**

**VCEplus**  
VCE To PDF - Free Practice Exam

<input type="checkbox"/>	Add-DnsServerClientSubnet
<input type="checkbox"/>	Enable-DnsServerPolicy
<input type="checkbox"/>	Set-DnsServerResponseRateLimiting
<input type="checkbox"/>	Set-DnsServerResponseRateLimitingExceptionlist

**Second cmdlet to run:**

<input type="checkbox"/>	Add - DnsServerResponseRateLimitingExceptionlist
<input type="checkbox"/>	Add-DnsServerQueryResolutionPolicy
<input type="checkbox"/>	Add-DnsServerZoneScope
<input type="checkbox"/>	Set-DnsServerDsSetting

Correct Answer:

First cmdlet to run:

	▼
<b>Add-DnsServerClientSubnet</b>	
Enable-DnsServerPolicy	
Set-DnsServerResponseRateLimiting	
Set-DnsServerResponseRateLimitingExceptionlist	

Second cmdlet to run:

	▼
<b>Add- DnsServerResponseRateLimitingExceptionlist</b>	
Add-DnsServerQueryResolutionPolicy	
Add-DnsServerZoneScope	
Set-DnsServerDsSetting	
VCE To PDF - Free Practice Exam	

Section: (none)

Explanation

Explanation/Reference: