

**70-345.exam.64q**

Number: 70-345  
Passing Score: 800  
Time Limit: 120 min  
File Version: 1



**VCE to PDF Converter :** <https://vceplus.com/vce-to-pdf/>

**Facebook:** <https://www.facebook.com/VCE.For.All.VN/>

**Twitter :** [https://twitter.com/VCE\\_Plus](https://twitter.com/VCE_Plus)

**Google+ :** <https://plus.google.com/+Vcepluscom>

**LinkedIn :** <https://www.linkedin.com/company/vceplus>

<https://vceplus.com/>

**Microsoft 70-345**

**Designing and Deploying Microsoft Exchange Server 2016**

## Question Set 1

### QUESTION 1

Your company has two offices. The offices are located in San Francisco and Los Angeles. Each office contains a data center. Each data center has a local connection to the Internet.

You deploy an Exchange Server 2016 organization named Contoso and install three servers in each data center. All of the servers are members of a single database availability group (DAG). Each data center hosts 2,000 mailboxes that replicate to the other data center.

You create four records in DNS. The records are configured as shown in the following table.

Record Name	Type	Points to	Zone
Lamail.contoso.com	A	Los Angeles data center	Public
Sfmail.contoso.com	A	San Francisco data center	Public
Mail.contoso.com	CNAME	Lamail.contoso.com Sfmail.contoso.com	Public
Mail.contoso.com	A	Los Angeles data center	Internal

You need to recommend a client access solution for the organization to meet the following requirements:

When connecting from the Internet, all users must connect to the same namespace for Outlook on the Web.

If a connection to the Internet fails at one data center, all users must be able to access their mailbox from the Internet.

When connecting from the Internet, all user connections to Exchange ActiveSync must be balanced equally across both data centers.

What is the best recommendation to achieve the goal? More than one answer choice may achieve the goal. Select the BEST answer.



<https://vceplus.com/>

- A. In the San Francisco office, configure the internal URLs of the servers to use the internal URL of sfgmail.contoso.com. In the Los Angeles office, configure the internal URLs of the servers to use the internal URL of lamail.contoso.com.
- B. In the San Francisco office, configure the external URLs of the servers to use the internal URL of sfgmail.contoso.com. In the Los Angeles office, configure the internal URLs of the servers to use the external URL of lamail.contoso.com.
- C. Deploy a hardware-based load balancer to each office and configure all of the internal URLs to use mail.contoso.com.
- D. Deploy a hardware-based load balancer to each office and configure all of the external URLs to use mail.contoso.com.

**Correct Answer:** D

**Section:** [none]

**Explanation**

**Explanation/Reference:**

References: <http://www.msexchange.org/articles-tutorials/exchange-2016-articles/high-availability-recovery/load-balancing-exchange-server-2016-part2.html>

## QUESTION 2

How is the IBM Content Template Catalog delivered for installation?

- A. as an EXE file
- B. as a ZIP file of XML files
- C. as a Web Application Archive file
- D. as a Portal Application Archive file



**Correct Answer:** D

**Section:** [none]

**Explanation**

**Explanation/Reference:** References:

[https://greenhouse.lotus.com/plugins/plugincatalog.nsf/assetDetails.xsp?action=editDocument&documentId=6506DAAAF92F201585257AFA0005B9E](https://greenhouse.lotus.com/plugins/plugincatalog.nsf/assetDetails.xsp?action=editDocument&documentId=6506DAAAF92F201585257AFA0005B9E7)

7

## QUESTION 3

You have an Exchange Server 2016 organization.

You need to ensure that users in each department download an Offline Address Book (OAB) that only contains the users in their department. The solution must ensure that all of the users can continue to see all the other users in the organization.

Which three actions should you perform? Each correct answer presents part of the solution.

- A. Create an OAB for each department
- B. Modify the properties for each user mailbox.
- C. Create an address book policy (ABP) for each department.
- D. Create an address list for each department.
- E. Modify the properties of the default OAB.
- F. Create an email address policy for each department.

**Correct Answer:** ABC

**Section:** [none]

**Explanation**

**Explanation/Reference:**

References: [https://technet.microsoft.com/en-us/library/hh529942\(v=exchg.150\).aspx](https://technet.microsoft.com/en-us/library/hh529942(v=exchg.150).aspx) [https://technet.microsoft.com/en-us/library/hh529948\(v=exchg.150\).aspx](https://technet.microsoft.com/en-us/library/hh529948(v=exchg.150).aspx)

#### **QUESTION 4**

##### **HOTSPOT**

You are designing an Exchange Server 2016 organization. The organization will use a single namespace of mail.contoso.com for all client access protocols.

You plan to use load balancers.

You identify the following requirements for the load balancing solution:

- The Edge Transport server log files must contain the original IP address of the SMTP hosts.
- Clients must be able to connect only when they use the approved hostnames and the approved virtual directories.

You need to identify which type of load balancer meets each requirement.

What should you identify? To answer, select the appropriate options in the answer area.

**Hot Area:**

**Answer area**

The Edge Transport server log files must contain the original IP address of the SMTP client:

▼

Layer 4 only
Layer 7 only
Both Layer 4 and Layer 7

Users must be able to connect only when they use the approved hostnames and the approved virtual directories:

▼

Layer 4 only
Layer 7 only
Both Layer 4 and Layer 7

**Correct Answer:**

**Answer area**

The Edge Transport server log files must contain the original IP address of the SMTP client:

▼

Layer 4 only
Layer 7 only
Both Layer 4 and Layer 7

Users must be able to connect only when they use the approved hostnames and the approved virtual directories:

▼

Layer 4 only
Layer 7 only
Both Layer 4 and Layer 7

**Section:** [none]

**Explanation**

**Explanation/Reference:**

References:

[http://pdfs.loadbalancer.org/Microsoft\\_Exchange\\_2016\\_Deployment\\_Guide.pdf](http://pdfs.loadbalancer.org/Microsoft_Exchange_2016_Deployment_Guide.pdf) Page 9-13

### QUESTION 5

HOTSPOT You have a hybrid Exchange Server 2016 organization.

Users use Outlook on the web. All mailboxes currently reside on-premises.

You have an internal public key infrastructure (PKI) that uses a certification authority (CA) named CA1. Certificates are issued to users to sign and encrypted email messages.

You move a mailbox to Exchange Online and you discover that the mailbox fails to exchange signed or encrypted email messages from the on-premises mailbox users.

You need to ensure that all of the mailboxes that were moved to Exchange Online can send encrypted email messages to the on-premises mailboxes. The mailboxes must also be able to receive encrypted email messages from the on-premises mailboxes.

You export the required certificates to a file named Export.sst.

What command should you run next? To answer, select appropriate options in the answer area.

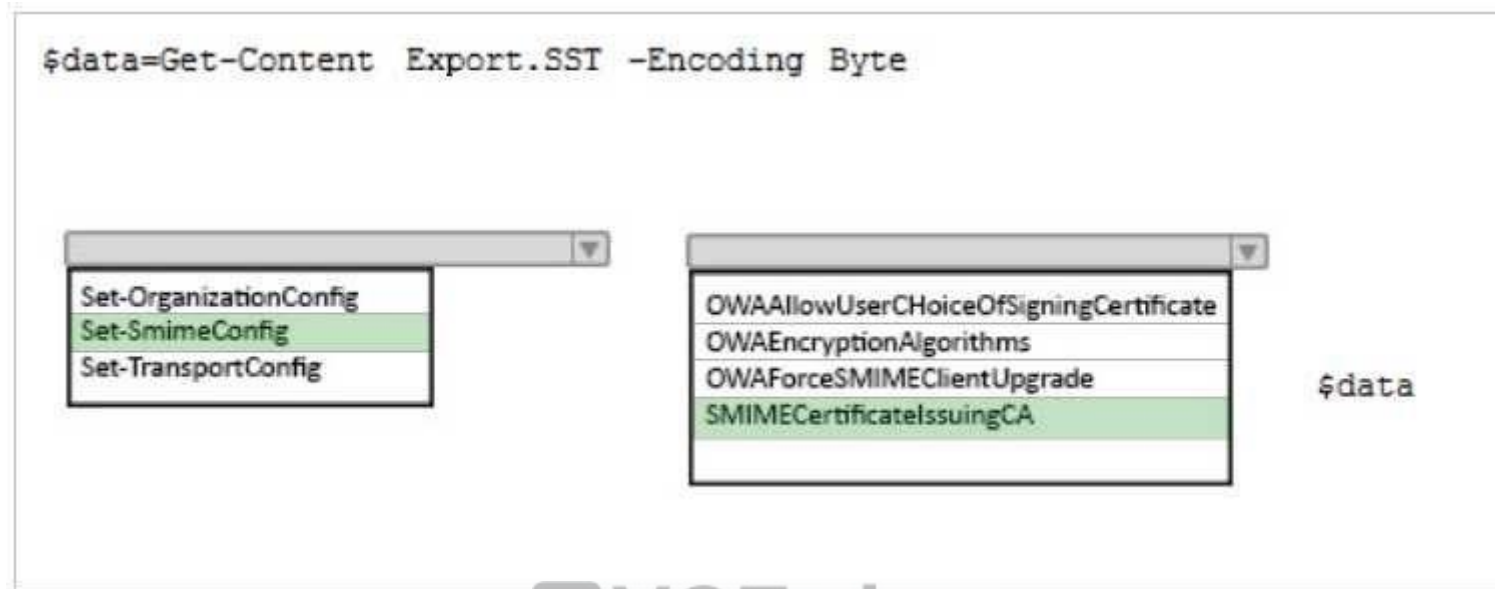
**Hot Area:**

`$data=Get-Content Export.sst -Encoding Byte`

**VCEplus**  
VCE To PDF - Free Practice Exam

Set-OrganizationConfig Set-SmimeConfig Set-TransportConfig	OWAAllowUserChoiceOfSigningCertificate OWAEncryptionAlgorithms OWAForceSMIMEClientUpgrade SMIMECertificateIssuingCA	\$data
--	--	--------

**Correct Answer:**



**Section:** [none]  
**Explanation**

**Explanation/Reference:**

References: <http://blogs.technet.com/b/exchange/archive/2014/12/15/how-to-configure-s-mime-in-office-365.aspx>

**QUESTION 6**

Your company has an Exchange Server 2016 organization named contoso.com.

You need to recommend a solution that meets following requirements:

- A user named User1 must be able to send email messages by using an alias of sales@contoso.com in the From field.
- Recipients of the messages must be prevented from the identifying the actual sender of the message. ▪

User1 and a user named User2 must each receive a copy of replies to sales@contoso.com

What should you recommend?

- A. Create a distribution group named Sales that has an alias of Sales. Add User1 and User2 to the group. Assign the Send As permissions to User1.
- B. Create a shared mailbox named Sales that has an Alias of Sales. Assign the Receive As permission User1 and User2. Assign the Send As permissions to User1.

- C. Create a shared mailbox named Sales that has an Alias of Sales. Assign the Receive As permission User1 and User2. Assign the Send on Behalf permission to User1.
- D. Create a distribution group named Sales that has an alias of Sales. Add User1 and User2 to the group. Assign the send on Behalf permission to User1.

**Correct Answer:** A

**Section:** [none]

**Explanation**

**Explanation/Reference:**

References: <http://exchangeserverpro.com/exchange-2010-send-as-permissions-distribution-group/>

### QUESTION 7

You have an Exchange Server 2016 organization. The organization contains several servers.

Users in the marketing department often send Information Rights Management (IRM)-protected email messages. The IRM-protected messages are excluded from eDiscovery searches.

You need to configure the Exchange Server Organization to ensure that the contents of the mailboxes of the marketing department users are searched for all messages that contain the word ProjectX. The solution must prevent the email messages from being deleted permanently.

Your user account is a member of the required role group.

Which three actions should you perform? Each correct answer presents part of the solution.

- A. Run the **New-Mailbox** cmdlet
- B. Run the **New-MailboxSearch** cmdlet
- C. Run the **Set-IRMConfiguration** cmdlet
- D. Run the **Search-Mailbox** cmdlet
- E. Export the results from the discovery mailbox to a personal folders (PST) file, and then use Microsoft Outlook to open the PST file.
- F. Use Outlook on the web to open the discovery mailbox.

**Correct Answer:** BCE

**Section:** [none]

**Explanation**

**Explanation/Reference:**

References: [https://technet.microsoft.com/en-us/library/dn440164\(v=exchg.160\).aspx?f=255&MSPPErr=-2147217396](https://technet.microsoft.com/en-us/library/dn440164(v=exchg.160).aspx?f=255&MSPPErr=-2147217396) [https://technet.microsoft.com/en-us/library/dd353189\(v=exchg.160\).aspx](https://technet.microsoft.com/en-us/library/dd353189(v=exchg.160).aspx)

### QUESTION 8

#### HOTSPOT

Your company has an Exchange Server 2016 organization.

You plan to allow several users to access the mailboxes of the other group.

You need to ensure that a user named User1 can read and delete the email messages in the mailbox of a user named User2. User1 must add the mailbox of User2 manually to the Microsoft Outlook profile.

What command should you run? To answer, select the appropriate options in the answer area.

#### Hot Area:

### Answer Area

▼

Add-MailboxFolderPermission  
Add-MailboxPermission

▼

-Identify User1  
-Identify User2

▼

-User User1  
-User User2

▼

-AccessRight ExternalAccount  
-AccessRight FullAccess  
-AccessRight ReadPermission

▼

-Atomapping \$false  
-Atomapping \$true  
-Confirm \$false  
-Confirm \$true

-inheritanceType All

**Correct Answer:**

## Answer Area

Add-MailboxFolderPermission Add-MailboxPermission	-Identify User1 -Identify User2	-User User1 -User User2
-AccessRight ExternalAccount -AccessRight FullAccess -AccessRight ReadPermission	-Atomapping \$false -Atomapping \$true -Confirm \$false -Confirm \$true	-inheritanceType All

Section: [none]

Explanation

Explanation/Reference:

References: [https://technet.microsoft.com/en-us/library/bb124097\(v=exchg.160\).aspx?f=255&MSPPErr=-2147217396](https://technet.microsoft.com/en-us/library/bb124097(v=exchg.160).aspx?f=255&MSPPErr=-2147217396)



<https://vceplus.com/>

**QUESTION 9**

You are planning an Exchange Server 2016 organization. The organization will contain a Mailbox server named EX01.

Users will have primary SMTP email addresses in the following domains:

- Contoso.com
- Fabrikam.com
- Cohowinery.com ▪
- Wingtiptoy.com

You need to add a DNS record to provide Autodiscover for each domain.  
Which type of record should you create in each zone?

- A. CERT
- B. A
- C. MINFO
- D. PTR

**Correct Answer:** B

**Section:** [none]

**Explanation**

**Explanation/Reference:**

References: <http://www.techieshelp.com/create-autodiscover-record/>

**QUESTION 10**

DRAG DROP

You need to configure a distribution group named CustomerService that has the following configurations:

- A user named CSManager must be the only user allowed to add members to CustomerService.
- All email messages sent to CustomerService must be approved by CSManager. ▪

External users must be allowed to send email messages to CustomerService.

You configure CSManager as the group owner.

What should you configure in the Exchange admin center for each requirement? To answer, drag the appropriate configurations to the correct requirements. Each configuration may be used once, more than once, or not at all. You may need to drag the split bar, between panes or scroll to view content.

**Select and Place:**

### Configurations

Delivery Management

Membership Approval

Moderation

Ownership

### Answer Area

A user named CSManager must be the only user allowed to add members to CustomerService:

Configuration

All email messages sent to CustomerService msut be approved by CSManager:

Configuration

External users must be allowed to send email messages to CustomerService:

Configuration

**Correct Answer:**

### Configurations

Membership Approval



### Answer Area

A user named CSManager must be the only user allowed to add members to CustomerService:

Ownership

All email messages sent to CustomerService msut be approved by CSManager:

Moderation

External users must be allowed to send email messages to CustomerService:

Delivery Management

**Section:** [none]

**Explanation**

**Explanation/Reference:**

References:

<http://msexchangeguru.com/2015/10/19/groups/>

#### QUESTION 11

You have an Exchange Server 2016 organization. The organization contains accepted domains for contoso.com and litwareinc.com. The antimalware engine is enabled on Mailbox servers and uses the default policy. You do not create any custom malware rules. You need to notify internal senders when a malware attachment is detected. The rule must apply only when the recipient domain is contoso.com.

Which two cmdlets should you use? Each correct answer presents part of the solution.

- A. Set-MalwareFilterPolicy
- B. New-MalwareFilterRule
- C. New-MalwareFilterPolicy
- D. Set-MalwareFilterRule

**Correct Answer:** BC

**Section:** [none]

**Explanation**

**Explanation/Reference:**

References: [https://technet.microsoft.com/en-us/library/dn306062\(v=exchg.160\).aspx?f=255&MSPPErr=-2147217396](https://technet.microsoft.com/en-us/library/dn306062(v=exchg.160).aspx?f=255&MSPPErr=-2147217396) [https://technet.microsoft.com/en-us/library/jj215680\(v=exchg.160\).aspx?f=255&MSPPErr=-2147217396](https://technet.microsoft.com/en-us/library/jj215680(v=exchg.160).aspx?f=255&MSPPErr=-2147217396)

#### QUESTION 12

You have an Exchange Server 2016 organization. The organization contains three Mailbox servers. The servers are configured as shown in the following table.

Server Name	Active Directory site
EX01	Site1
EX02	Site2
EX03	Site3

You have distribution group named Group1. Group1 contains three members. The members are configured as shown in the following table.

User Name	Mailbox server
User1	EX01
User2	EX02
User3	EX03

You discover that when User1 sends email messages to Group1, all of the messages are delivered to EX02 first.

You need to identify why the email messages sent to Group1 are sent to EX02 instead.  
What should you identify?

- A. EX02 is configured as an expansion server.
- B. The arbitration mailbox is hosted on EX02.
- C. Site2 has universal group membership caching enabled.
- D. Site2 is configured as a hub site.

**Correct Answer:** A

**Section:** [none]

**Explanation**

**Explanation/Reference:**

References: [https://technet.microsoft.com/en-us/library/aa998825\(v=exchg.150\).aspx](https://technet.microsoft.com/en-us/library/aa998825(v=exchg.150).aspx)

### QUESTION 13

Your network contains an Active Directory forest that has the site topology shown in the diagram.



You have an Exchange Server 2016 organization. The organization contains three servers. The servers are configured as shown in the following table.

Server Name	Active Directory site
EX01	Site1
EX02	Site2
EX03	Site3

You have the users described as shown in the following table.

User Name	Mailbox server
User1	EX01
User2	EX02
User3	EX03

You need to ensure that any email messages sent from User1 to User3 are sent to EX02 first, and then delivered to EX03.

What should you configure?



<https://vceplus.com/>

- A. Site 2 as a hub site
- B. EX02 as an expansion server
- C. the Exchange cost for the site link from Site 2 to Site 3

D. the Exchange cost for the site link from Site 1 to Site 2

**Correct Answer:** A

**Section:** [none]

**Explanation**

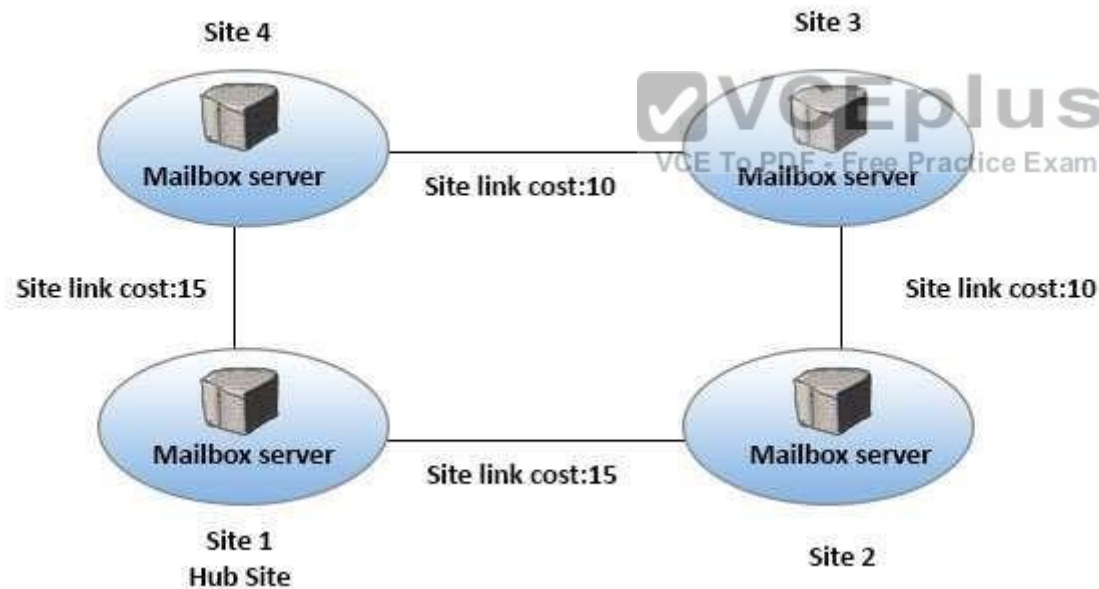
**Explanation/Reference:**

References: [https://technet.microsoft.com/en-us/library/aa998825\(v=exchg.150\).aspx](https://technet.microsoft.com/en-us/library/aa998825(v=exchg.150).aspx)

#### QUESTION 14

##### HOTSPOT

You have an Exchange Server 2016 organization. The Active directory sites are configured as shown in the following graphic.



Use the drop-down menus to select the answer choice that completes each statement based on the information presented in the graphic.

Hot Area:

### Answer Area

When a user from Site 4 sends an email message to user in Site 2, the message will be [answer choice].

sent directly to Site 2
relayed througuh Site 1
relayed througuh Site 3

If the server in Site 2 fails, all of the email messages sent from Site 4 to Site 2 will be queued on a server in [answer choice].

Site 1
Site 3
Site 4

Correct Answer:

Section: [none]

Explanation

Explanation/Reference:

References:

## Answer Area

When a user from Site 4 sends an email message to user in Site 2, the message will be [answer choice].

sent directly to Site 2
relayed throug Site 1
relayed throug Site 3

If the server in Site 2 fails, all of the email messages sent from Site 4 to Site 2 will be queued on a server in [answer choice].

Site 1
Site 3
Site 4

[https://technet.microsoft.com/en-us/library/jj916681\(v=exchg.150\).aspx](https://technet.microsoft.com/en-us/library/jj916681(v=exchg.150).aspx) [https://technet.microsoft.com/en-us/library/aa996299\(v=exchg.150\).aspx?f=255&MSPPErr=-2147217396](https://technet.microsoft.com/en-us/library/aa996299(v=exchg.150).aspx?f=255&MSPPErr=-2147217396)

### QUESTION 15

Your company has three offices. The offices are located in New York, London and Sydney. The offices connect to each other by using a WAN link. Each office connects directly to the Internet.

The company has an Exchange Server 2016 organization. The organization contains six Mailbox servers. The servers are configured as shown in the following table.

Server name	Office	Active Directory site	Database Availability group
EX1	New York	Site1	DAG1
EX2	New York	Site1	DAG1
EX3	London	Site2	DAG1
EX4	London	Site2	DAG1
EX5	Sydney	Site3	DAG1
EX6	Sydney	Site3	DAG1

Each office is configured to use a different Send connector to send email messages to the Internet. You need to ensure that the servers route email messages that have Internet recipients through their respective site only.

What should you modify?

- A. the permissions of each Send connector
- B. the settings of the site links
- C. the cost of each Send connector
- D. the scope of each Send connector

**Correct Answer: D**

**Section: [none]**

**Explanation**

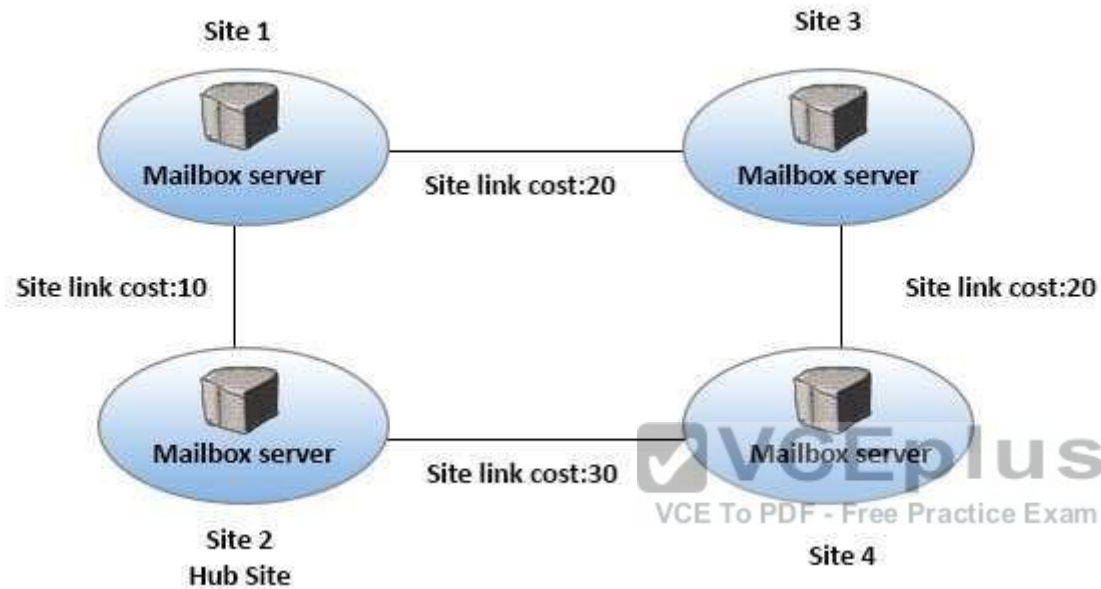
**Explanation/Reference:**

References: [https://msdn.microsoft.com/en-us/library/aa998662\(v=exchg.160\).aspx?f=255&MSPPErr=-2147217396](https://msdn.microsoft.com/en-us/library/aa998662(v=exchg.160).aspx?f=255&MSPPErr=-2147217396)

**QUESTION 16**

# **HOTSPOT**

You have an Exchange Server 2016 organization. The Active directory sites are configured as shown in the following graphic.



Use the drop-down menus to select the answer choice that completes each statement based on the information presented in the graphic.

**Hot Area:**

## Answer Area

A message that leaves Site 1 to a destination mailbox in Site 4 will be received next at [answer choice].

Site 2
Site 3
Site 4

A message that leaves Site 3 to a destination mailbox in Site 2 will be received next at [answer choice].

Site 1
Site 2
Site 4

**Correct Answer:**

**Section:** [none]

**Explanation**

**Explanation/Reference:**

References:

<http://blogs.technet.com/b/exchange/archive/2006/09/15/3394889.aspx>

**QUESTION 17**

### Answer Area

A message that leaves Site 1 to a destination mailbox in Site 4 will be received next at [answer choice].

A message that leaves Site 3 to a destination mailbox in Site 2 will be received next at [answer choice].

Site 2
Site 3
Site 4

Site 1
Site 2
Site 4

#### HOTSPOT

You have an Exchange Server 2016 organization.  
All users use Microsoft Outlook 2016.

You need to configure the Exchange Server organization to meet following requirements:

- Users must be prevented from receiving a notification when they attempt to send an email message to distribution groups that contain less than 100 members.
- Users must be notified before they send email messages to an unmonitored mailbox named Service1.

Which cmdlet should you run to meet each requirement? To answer, drag appropriate cmdlets to the correct requirements. Each cmdlet must be used once, more than once, or not at all. You may need to drag the split bar between panes or scroll to view content.

**Hot Area:**

## Answer Area

Users must be prevented from receiving a notification when they attempt to send an email message to distribution groups that contain less than 100 members:

▼

Set-DistributionGroup
Set-OrganizationConfig
Set-PolicyTipConfig
Set-TransportConfig

Users must be notified before they send email messages to an unmonitored mailbox named Service1:

▼

Set-Mailbox
Set-OrganizationConfig
Set-PolicyTipConfig
Set-TransportConfig

Correct Answer:

## Answer Area

Users must be prevented from receiving a notification when they attempt to send an email message to distribution groups that contain less than 100 members:

Set-DistributionGroup  
Set-OrganizationConfig  
**Set-Policy TipConfig**  
Set-TransportConfig

Users must be notified before they send email messages to an unmonitored mailbox named Service1:

Set-Mailbox  
Set-OrganizationConfig  
Set-Policy TipConfig  
Set-TransportConfig



Section: [none]

Explanation

Explanation/Reference:

References: [https://technet.microsoft.com/en-us/library/bb123981\(v=exchg.160\).aspx](https://technet.microsoft.com/en-us/library/bb123981(v=exchg.160).aspx) [https://technet.microsoft.com/en-gb/library/jj619307\(v=exchg.150\).aspx](https://technet.microsoft.com/en-gb/library/jj619307(v=exchg.150).aspx)

### QUESTION 18

DRAG DROP

Your company has an Exchange Server 2016 organization. The organization contains three servers and 2,000 mailboxes.

The organization audits all access to user mailboxes.

The company's security policy has the following requirements:

- Audit the name of each administrator who modifies the Exchange Server organization settings.
- Reduce the amount of audit log information generated by a service account named Service1.
- Create an audit entry when an administrator modifies the permissions of another administrative mailbox.

You need to identify which PowerShell cmdlets must be used to meet the requirements.

Which PowerShell cmdlet should you identify for each requirement? To answer, drag the appropriate cmdlets to the correct requirements. Each cmdlet may be used once, more than once or not at all. You may need to drag the split bar between panes or scroll to view content.

**Select and Place:**

Cmdlets	Answer Area
Set-AdminAuditLogConfig	<p>Reduce the amount of audit log information generated by Service 1:</p> <p>Cmdlet</p>
Set-MailboxAuditBypassAssociation	<p>Create an Audit entry when an administrator modifies the permissions of another administrative mailbox:</p> <p>Cmdlet</p>
Set-OrganizationConfig	<p>Audit the name of each administrator who modifies the Exchange Server organization settings:</p> <p>Cmdlet</p>
Write-AdminAuditLog	

**Correct Answer:**

Cmdlets	Answer Area
Set-AdminAuditLogConfig	Reduce the amount of audit log information generated by Service 1:
Set-MailboxAuditBypassAssociation	Set-MailboxAuditBypassAssociation
Set-OrganizationConfig	Create an Audit entry when an administrator modifies the permissions of another administrative mailbox:
Write-AdminAuditLog	Set-AdminAuditLogConfig
	Audit the name of each administrator who modifies the Exchange Server organization settings:
	Set-AdminAuditLogConfig

**Section:** [none]

**Explanation**

**Explanation/Reference:**

Explanation:

Box 1: Set-MailboxAuditBypassAssociation

Box 2: Set-AdminAuditLogConfig

Box 3: Set-AdminAuditLogConfig

References:

[https://technet.microsoft.com/en-us/library/ff696758\(v=exchg.160\).aspx](https://technet.microsoft.com/en-us/library/ff696758(v=exchg.160).aspx) [https://technet.microsoft.com/en-us/library/dd298169\(v=exchg.160\).aspx](https://technet.microsoft.com/en-us/library/dd298169(v=exchg.160).aspx) [https://technet.microsoft.com/en-us/library/dd335144\(v=exchg.160\).aspx](https://technet.microsoft.com/en-us/library/dd335144(v=exchg.160).aspx)

## QUESTION 19

HOTSPOT

You run the **Get-DlpPolicy** cmdlet and you receive the following output.

```

RunspaceID      : 07479925-f4bf-4bb2-80e0-4d1eab557dfe
Name            : Policy1
Version         : 15.0.3.0
ContentVersion  : 4
ImmutableID     : 4bf920ba-536b-4370-8dc2-4f71157702f1
State           : Enabled
Mode            : AuditAndNotify
Description     :
PublisherName   : Microsoft
Keywords        : {}
Identity        : Policy1
DistinguishedName : CN=CPolicy1,CN=Rules,CN=Transport
                  SettingsCN=Contoso,CN=Microsoft
                  Exchange,CN=Services,CN=Configuration,
                  DC=contoso,DC=com
Guid            : a0a95206-02a3-4f24-a913-a74dbbc8db01
OrganizationID  :
IsValid         : True
WhenChanged     : 9/15/2015 12:13:25 AM
ExchangeVersion : 0.20 (15.0.0.0)
MaximumSupportedExchangeObjectVersion : 0.20 (15.0.0.0)
IsReadOnly      : False
ObjectState     : Unchanged
  
```

Use the drop-down menus to select the answer choice that completes each statement based on the information presented in the output.

Hot Area:

**Answer Area**

If a message matches the conditions of the policy, the message will be  
[answer choice].

blocked and the sender will be notified
blocked without notifying the sender
send to the recipient

If a message matches the conditions of the policy, a [answer choice]  
will appear in Microsoft Outlook.

mail tip
non-delivery report (NDR)
policy tip

**Correct Answer:**

**Answer Area**

If a message matches the conditions of the policy, the message will be  
[answer choice].

blocked and the sender will be notified
blocked without notifying the sender
send to the recipient

If a message matches the conditions of the policy, a [answer choice]  
will appear in Microsoft Outlook.

mail tip
non-delivery report (NDR)
policy tip

**Section:** [none]  
**Explanation**

**Explanation/Reference:**

**QUESTION 20**
**HOTSPOT**

You have an Exchange Server organization. The organization contains four servers. The servers configured as shown in the following table.

Server name	Exchange Server version	Role	Configuration
EX1	2013	Client Access Server	Provides MAPI access for a third-party application
EX2	2013	Mailbox Server	Hosts public folders that are accessed by using Microsoft Outlook 2013
EX3	2010	Mailbox Server, Hub Transport server	Filters the content of all email messages from the Internet by using the content filtering agent
EX4	2010	Mailbox server	Provides retention by using managed folders

You plan to upgrade the organization to Exchange Server 2016.

You need to identify which servers have functionalities that can be fully achieved by using Exchange Server 2016.

What should you identify? To answer, select the appropriate options in the answer area.

**Hot Area:**

## Answer Area

All the functionalities in EX01 can be achieved by using Exchange Server 2016:

	▼
Yes	
No	

All the functionalities in EX02 can be achieved by using Exchange Server 2016:

	▼
Yes	
No	

All the functionalities in EX03 can be achieved by using Exchange Server 2016:

	▼
Yes	
No	

All the functionalities in EX04 can be achieved by using Exchange Server 2016:

	▼
Yes	
No	

Correct Answer:

## Answer Area

All the functionalities in EX01 can be achieved by using Exchange Server 2016:

	▼
Yes	
No	

All the functionalities in EX02 can be achieved by using Exchange Server 2016:

	▼
Yes	
No	

All the functionalities in EX03 can be achieved by using Exchange Server 2016:

	▼
Yes	
No	

All the functionalities in EX04 can be achieved by using Exchange Server 2016:

	▼
Yes	
No	

Section: [none]

Explanation

**Explanation/Reference:**

References:

[https://technet.microsoft.com/en-us/library/jj619283\(v=exchg.160\).aspx](https://technet.microsoft.com/en-us/library/jj619283(v=exchg.160).aspx) [https://technet.microsoft.com/en-us/library/jj552408\(v=exchg.160\).aspx](https://technet.microsoft.com/en-us/library/jj552408(v=exchg.160).aspx)

**QUESTION 21**

HOTSPOT

You have an Exchange Server 2016 organization and a Microsoft Office 365 subscription configured in a hybrid deployment. The deployment contains 500 user mailboxes.

Users who have mailboxes in Office 365 report that they cannot view the availability information of users who have mailboxes in Exchange Server 2016.

You need to ensure that the users hosted in Office 365 can view the availability information of the mailboxes hosted in on-premises Exchange Server.

## Answer Area

<div><div></div><div>Add-AvailabilityAddressSpace Set-AvailabilityConfig Set-OutlookAnywhere Set-WebServicesVirtualDirectory</div></div>	<div><div></div><div>-identify EX1/EWS(Default Website) -identify EX1/OWA(Default Website) -ISAuthentication NTLM</div></div>
--	---

<div><div></div><div>-ExternalURL -InternalURL</div></div>	<code>https://mail.contoso.com/ews/Exchange.asmx</code>
--	---

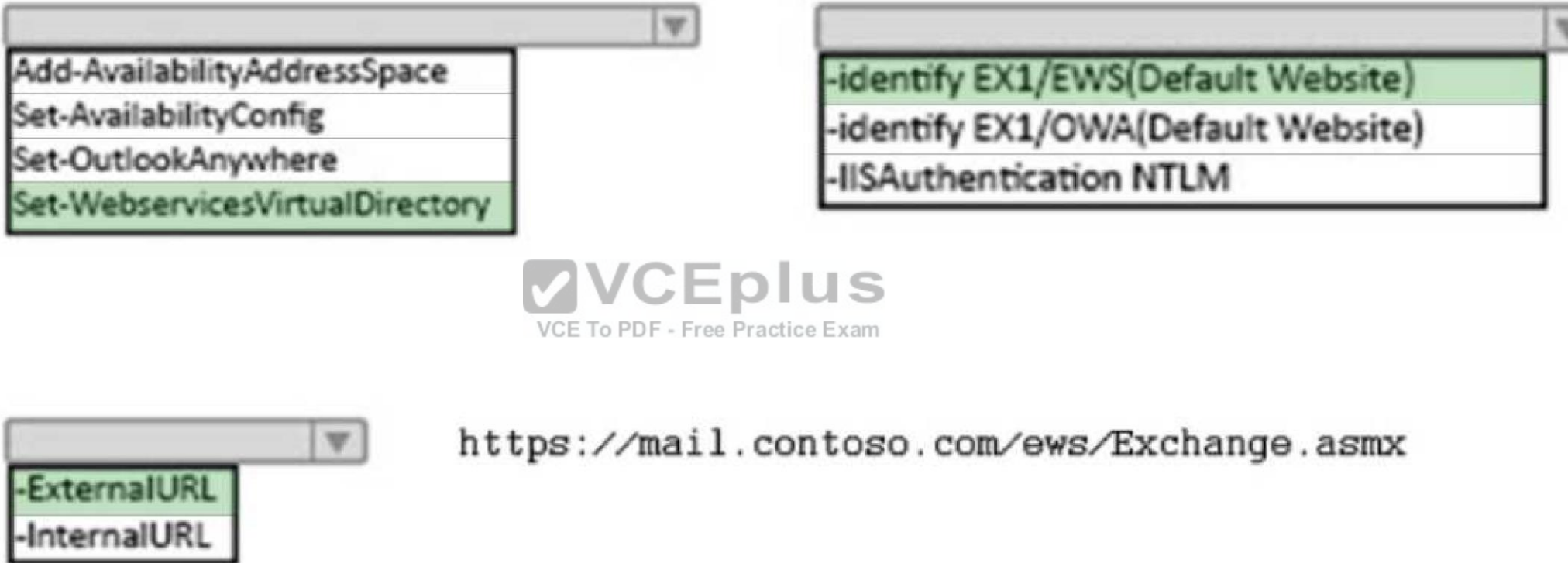
Which command should you run on an Exchange Server? To answer, select the appropriate options in the answer area.

**Hot Area:**



Correct Answer:

### Answer Area



Set-WebservicesVirtualDirectory

-identify EX1/EWS(Default Website)

-identify EX1/OWA(Default Website)

-IISAuthentication NTLM

-ExternalURL

-InternalURL

https://mail.contoso.com/ews/Exchange.asmx

Section: [none]

Explanation

Explanation/Reference:

QUESTION 22

You have an Exchange Server 2016 organization.  
You plan to migrate some of the users to Exchange Online.

You run the Microsoft Office 365 Hybrid Configuration Wizard and you discover that the Get-FederationInformation cmdlet fails to retrieve the required information.

You need to identify which DNS record must be configured to resolve the failure.

What should you identify?



<https://vceplus.com/>

- A. an MX record for SMTP domain
- B. an A record for a Mailbox server
- C. a PTR record for the Mailbox server
- D. an A record for Autodiscover



**Correct Answer:** D

**Section:** [none]

**Explanation**

**Explanation/Reference:**

References: <http://blogs.technet.com/b/mikehall/archive/2013/08/21/office-365-insight-into-the-hybrid-configuration-wizard-part-2.aspx>

### QUESTION 23

#### HOTSPOT

You have an Exchange Server 2010 organization.

You plan to upgrade to Exchange Server 2016.

You have two Active Directory sites configured as shown in the following table.

Site Name	Internet-facing
Brussels	No
New York	Yes

You have five servers configured as shown in the following table.

Server name	Exchange Server version	Role	Active Directory site
EX01	2010	Mailbox server	Brussels
CAS01	2010	Client Access server, Hub Transport server	Brussels
EX02	2010	Mailbox server	Brussels
CAS02	2010	Client Access server, Hub Transport server	New York
EX03	2016	Mailbox server	New York

You have three users who have mailboxes configured as shown in the following table.

User Name	Mailbox server location
User1	EX01
User2	EX02
User3	EX03

You have the following configurations:

- The OWA virtual directory ExternalURL on CAS01 is <https://mail.brussels.contoso.com/owa>.
- The OWA virtual directory ExternalURL on CAS02 is \$null.
- The OWA virtual directory ExternalURL on EX03 is <https://mail.contoso.com/owa>.

All users connect to <https://mail.contoso.com/owa> to access Outlook on the web.

For each of the following statements, select Yes, if the statement is true. Otherwise, select No.

## Answer Area

### Statements

User1 will be redirected to CAS01 when accessing Outlook on the web from the Internet.

☐
☐

User2 will be redirected to CAS02 when accessing Outlook on the web from the Internet.

☐
☐

User3 will be proxied to CAS02 when accessing Outlook on the web from the Internet.

☐
☐

Hot Area:

Correct Answer:

## Answer Area

### Statements

Yes

No

User1 will be redirected to CAS01 when accessing Outlook on the web from the Internet.

☒
☐

User2 will be redirected to CAS02 when accessing Outlook on the web from the Internet.

☐
☒

User3 will be proxied to CAS02 when accessing Outlook on the web from the Internet.

☒
☐

Section: [none]

Explanation

Explanation/Reference:

### QUESTION 24

DRAG DROP

You have an Exchange Server 2016 organization.

You run the Microsoft Office 365 Hybrid Configuration Wizard and you move all the mailboxes to Exchange Online.

You need to ensure that all of the email services remain available after you remove the Exchange Server 2016 servers from the organization.

Which DNS records should you modify? To answer, drag the appropriate record types to the correct DNS zones. Each record type may be used once, more than once, or not at all. You may need to drag the split bar between panes or scroll to view content.

Select and Place:

**Record Types**

Autodiscover
MX
NX
SRV

**Answer Area**

Record to modify in the internal DNS zone:

Record Type

Record to modify in the public DNS zone:

Record Type

Record Type

**Correct Answer:**

**Record Types**

Autodiscover
MX
NX
SRV

**Answer Area**

Record to modify in the internal DNS zone:

Autodiscover

Record to modify in the public DNS zone:

Autodiscover

MX

**Section:** [none]

**Explanation**

**Explanation/Reference:**

**QUESTION 25**

You have an Exchange Server organization. The organization contains servers that have Exchange Server 2010 and Exchange Server 2016 installed.

You establish a hybrid deployment between Exchange Server and Microsoft Office 365.

Some users have on-premises mailboxes and personal archives in Exchange Online.

You discover that you are unable to use In-Place eDiscovery to search user mailboxes and Exchange Online Archiving archives concurrently.

You need to recommend a solution to ensure that In-Place eDiscovery can search the mailboxes and the personal archives concurrently.

What should you include in the recommendation?

- A. OAuth authentication
- B. an organization relationship
- C. a retention policy
- D. the Mailbox Replication service (MRS)

**Correct Answer:** A

**Section:** [none]

**Explanation**

**Explanation/Reference:**

References: [https://technet.microsoft.com/en-us/library/dd298021\(v=exchg.160\).aspx](https://technet.microsoft.com/en-us/library/dd298021(v=exchg.160).aspx)

**QUESTION 26**

**DRAG DROP**

You have an Exchange Server 2010 organization. The organization has 500 mailboxes and three servers. The servers are configured as shown in the following table.

Server name	Role
EX10MBX	Mailbox Server
EX10CH	Client Access server, Hub Transport server
EX10EDGE	Edge Transport server

EX10EDGE is located in the perimeter network. EX10CH has an Edge Subscription. All Internet mail flows through EX10EDGE.

You deploy an Exchange Server 2016 Mailbox server named EX16MBX to the organization. You deploy an Exchange Server 2016 Edge Transport server named EX16EDGE to the perimeter network.

You need to transition all Internet mail to flow through EX16EDGE. The solution must minimize disruptions to the mail flow.

Which three actions should you perform in sequence? To answer, move the appropriate actions from the list of actions to the answer area and arrange them in the correct order.

**Select and Place:**

### Actions

Configure the perimeter Firewall to forward HTTPS traffic to EX16EDGE.

Modify the Edge Subscription on EX10CH.

Remove the Edge Subscription on EX10CH and EX10EDGE.

Create an Edge Subscription between EX16EDGE and EX16MBX.

Configure the perimeter firewall to forward SMTP traffic to EX16EDGE.

Create an Edge Subscription between EX10EDGE and EX16MBX.

### Answer Area



**Correct Answer:**

Actions	Answer Area
Configure the perimeter Firewall to forward HTTPS traffic to EX16EDGE.	Create an Edge Subscription between EX16EDGE and EX16MBX.
Modify the Edge Subscription on EX10CH.	Configure the perimeter firewall to forward SMTP traffic to EX16EDGE.
	Remove the Edge Subscription on EX10CH and EX10EDGE.
Create an Edge Subscription between EX10EDGE and EX16MBX.	

VCEplus  
VCE To PDF - Free Practice Exam

Section: [none]

Explanation

Explanation/Reference:

### QUESTION 27

You need to configure the virtual directories for the Exchange Server organization.

Which three commands should you use? Each correct answer presents part of the solution.

- A. Set-MapiVirtualDirectory -ExternalUrl "https://office-online.contoso.com/hosting/discovery"
- B. Set-ActiveSyncVirtualDirectory -ExternalUrl "https://mail.contoso.com/Microsoft-Server-ActiveSync"
- C. Set-WebServicesVirtualDirectory -ExternalUrl "https://mail.contoso.com/ews/exchange.asmx"
- D. Set-AutodiscoverVirtualDirectory -ExternalUrl "https://autodiscover.contoso.com/autodiscover/autodiscover.xml"
- E. Set-OwaVirtualDirectory -ExternalUrl "https://mail.contoso.com/owa"

**Correct Answer:** BCD

**Section:** [none]

**Explanation**

**Explanation/Reference:**

B: Use the Set-ActiveSyncVirtualDirectory cmdlet to modify existing Microsoft Exchange ActiveSync virtual directories that are used in Internet Information Services (IIS) on Exchange servers.

C: Use the Set-WebServicesVirtualDirectory cmdlet to modify existing Exchange Web Services virtual directories that are used in Internet Information Services (IIS) on Microsoft Exchange servers.

D: Use the Set-AutodiscoverVirtualDirectory cmdlet to configure Autodiscover virtual directories that are used in Internet Information Services (IIS) on Exchange servers.

Incorrect Answers:

A: Use the Set-MapiVirtualDirectory cmdlet to modify Messaging Application Programming Interface (MAPI) virtual directories that are used in Internet Information Services (IIS) on Microsoft Exchange servers. A MAPI virtual directory is used by supported versions of Microsoft Outlook to connect to mailboxes by using the MAPIHTTP protocol.

E: Use the Set-OwaVirtualDirectory cmdlet to modify existing Outlook on the web virtual directories that are used in Internet Information Services (IIS) on Exchange servers.

References: [https://technet.microsoft.com/en-us/library/bb123679\(v=exchg.160\).aspx](https://technet.microsoft.com/en-us/library/bb123679(v=exchg.160).aspx) [https://technet.microsoft.com/en-us/library/aa998601\(v=exchg.160\).aspx](https://technet.microsoft.com/en-us/library/aa998601(v=exchg.160).aspx)

**QUESTION 28**

You have an Exchange Server 2016 organization.

Users report that they receive an Autodiscover error when they attempt to configure a Microsoft Outlook profile.

You need to view the URLs that are returned to the users when they attempt to establish an Autodiscover connection.

Which command should you run from an Exchange server?

- A. Test-OutlookConnectivity
- B. Test-OutlookWebServices
- C. Test-WebServicesConnectivity
- D. Test-MAPIConnectivity

**Correct Answer:** B

**Section:** [none]

**Explanation**

**Explanation/Reference:**

Use the Test-OutlookWebServices cmdlet to verify the Autodiscover service settings for Microsoft Outlook on a computer running Microsoft Exchange Server that has the Client Access server role installed.

Incorrect Answers:

A: Use the Test-OutlookConnectivity cmdlet to test end-to-end Microsoft Outlook client connectivity in the Microsoft Exchange organization. This includes testing for both Outlook Anywhere (RPC over HTTP) and MAPI over HTTP connections.

References: <http://exchangeserverpro.com/exchange-2013-test-outlook-web-service/>

## QUESTION 29

### HOTSPOT

You deploy an Exchange Server 2016 organization. The organization contains two servers. The servers are configured as shown in the following table.

Server name	Role
Ex01.contoso.local	Mailbox server
Ex02.contoso.local	Mailbox server

The default self-signed certificates are installed on both servers.

All of the users in the organization work from home and from customer locations.

You purchase a Layer 7 hardware-based load balancer. You configure SSL bridging without session affinity for Outlook on the web connections. The load balancer has an internal fully qualified domain name (FQDN) of lb1.contoso.local.

DNS servers are configured to resolve mail.contoso.com names to the external IP address of the load balancer.

You need to recommend which names must be included in the certificates installed on the load balancers and the Exchange servers.

What should you recommend for each certificate? To answer, select the appropriate options in the answer area.

**Hot Area:**

## Answer Area

Load balancer:

	▼
Lb1.contoso.com	
Lb1.contoso.local	
Mail.contoso.com	

Ex01.contoso.local:

	▼
Ex01.contoso.com	
Ex01.contoso.local	
Mail.contoso.com	

Ex02.contoso.local:

	▼
Ex02.contoso.com	
Ex02.contoso.local	
Mail.contoso.com	

**Correct Answer:**

## Answer Area

Load balancer:

	▼
Lb1.contoso.com	
Lb1.contoso.local	
Mail.contoso.com	

Ex01.contoso.local:

	▼
Ex01.contoso.com	
Ex01.contoso.local	
Mail.contoso.com	

Ex02.contoso.local:

	▼
Ex02.contoso.com	
Ex02.contoso.local	
Mail.contoso.com	

Section: [none]

Explanation

Explanation/Reference:

**QUESTION 30**
**HOTSPOT**

You are planning an Exchange Server 2016 organization. The organization will contain two servers. The servers will be configured as shown in the following table.

Server name	Active Directory site
EX01	New York
EX02	London

You plan to purchase an SSL certificate that contains the following names:

- Mail.contoso.com
- Mail.london.contoso.com
- Mail.newyork.contoso.com

You plan to configure a solution for the sites in New York and London. DNS will resolve the names as shown in the following table.

Host name	Resolves to
Mail.contoso.com	IP addresses of the servers in the New York and London sites
Mail.newyork.contoso.com	IP address of the server in the New York site
Mail.london.contoso.com	IP address of the server in the London site

You need to configure the client protocols to meet the following requirements:

Users who connect to their mailbox by using Outlook on the web must connect directly to a server in the site that hosts their mailbox.  
 All Exchange ActiveSync users must connect to the same namespace.

How should you configure the virtual directories? To answer, select the appropriate options in the answer area.

**Hot Area:**

## Answer Area

EX01 OWA virtual directory ExternalUrl:

	▼
https://ex01.contoso.com/owa	
https://mail.contoso.com/owa	
https://mail.london.contoso.com/owa	
https://mail.newyork.contoso.com/owa	

EX02 OWA virtual directory ExternalUrl:

	▼
https://ex02.contoso.com/owa	
https://mail.contoso.com/owa	
https://mail.london.contoso.com/owa	
https://mail.newyork.contoso.com/owa	

EX01 ActiveSync virtual directory ExternalUrl:

	▼
https://ex01.contoso.com/Microsoft-Server-ActiveSync	
https://mail.contoso.com/Microsoft-Server-ActiveSync	
https://mail.london.contoso.com/Microsoft-Server-ActiveSync	

EX02 ActiveSync virtual directory ExternalUrl:

	▼
https://ex02.contoso.com/Microsoft-Server-ActiveSync	
https://mail.contoso.com/Microsoft-Server-ActiveSync	
https://mail.london.contoso.com/Microsoft-Server-ActiveSync	

**Correct Answer:**

## Answer Area

EX01 OWA virtual directory ExternalUrl:

	▼
https://ex01.contoso.com/owa	
https://mail.contoso.com/owa	
https://mail.london.contoso.com/owa	
https://mail.newyork.contoso.com/owa	

EX02 OWA virtual directory ExternalUrl:

	▼
https://ex02.contoso.com/owa	
https://mail.contoso.com/owa	
https://mail.london.contoso.com/owa	
https://mail.newyork.contoso.com/owa	

EX01 ActiveSync virtual directory ExternalUrl:

	▼
https://ex01.contoso.com/Microsoft-Server-ActiveSync	
https://mail.contoso.com/Microsoft-Server-ActiveSync	
https://mail.london.contoso.com/Microsoft-Server-ActiveSync	

EX02 ActiveSync virtual directory ExternalUrl:

	▼
https://ex02.contoso.com/Microsoft-Server-ActiveSync	
https://mail.contoso.com/Microsoft-Server-ActiveSync	
https://mail.london.contoso.com/Microsoft-Server-ActiveSync	

**Section: [none]**

**Explanation**

**Explanation/Reference:**

### **QUESTION 31**

Your company has an Exchange Server 2016 organization.

All users have a primary mailbox and archive mailboxes.

You create a new retention policy for the users. The policy includes the following types of tags:

A default retention policy tag (RPT) applied to the mailbox: The tag is configured to move email messages older than three years to the archive.

An RPT applied to the users' Sent Items folder: The tag is configured to move email messages older than one year to the archive.

The corporate retention policy is applied to all of the mailboxes.

A user creates a personal tag named Tag1. The personal tag is configured to delete items permanently after 180 days.

The user sends an email message that uses Tag1.

You need to identify what will occur to the message. What should you identify?

- A. The message will be deleted in six months.
- B. The message will be moved to the archive in one year.
- C. The message will be moved to the archive in one year and deleted six months later.
- D. The message will be moved to the archive in three years.

**Correct Answer: A**

**Section: [none]**

**Explanation**

**Explanation/Reference:**

Personal tags allow your users to determine how long an item should be retained. For example, the mailbox can have a DPT to delete items in seven years, but a user can create an exception for items such as newsletters and automated notifications by applying a personal tag to delete them in three days.

References: [https://technet.microsoft.com/en-us/library/dd297955\(v=exchg.150\).aspx](https://technet.microsoft.com/en-us/library/dd297955(v=exchg.150).aspx)

### **QUESTION 32**

You have an Exchange Server 2016 organization. The organization contains 5,000 mailboxes.

All users connect to their mailbox by using Microsoft Outlook and Outlook on the web.

You need to ensure that all of the users are notified before they send an email message to a distribution group named Executives.

Which cmdlet should you use?

- A. New-TransportRule
- B. Set-Mailbox
- C. New-PolicyTipConfig
- D. Set-DistributionGroup
- E. Set-DLPPolicy

**Correct Answer:** A

**Section:** [none]

**Explanation**

**Explanation/Reference:**

You can use a transport rule with the condition The recipient is a member of. This condition matches messages that contain recipients who are members of the specified distribution group. The distribution group can be listed in the To, Cc, or Bcc fields.

Incorrect Answers:

D: Use the Set-DistributionGroup cmdlet to modify the settings of existing distribution groups or mail-enabled security groups.

E: Use the Set-DlpPolicy cmdlet to modify data loss prevention (DLP) policies in your organization.

References: [https://technet.microsoft.com/en-us/library/dd638183\(v=exchg.160\).aspx](https://technet.microsoft.com/en-us/library/dd638183(v=exchg.160).aspx)

### QUESTION 33

DRAG DROP

You have an Exchange Server 2016 organization. The organization contains 2,000 mailboxes.

You need to provide administrators with the ability to perform the following tasks:

An administrator named Admin1 must be able to create custom message classifications.

An administrator named Admin2 must be able to create retention tags.

Which management role group should you assign to each administrator? To answer, drag the appropriate role groups to the correct administrators. Each role group may be used once, more than once, or not at all. You may need to drag the split bar between panes or scroll to view content.

**Select and Place:**

### Role Groups

Compliance Management

Discovery Management

Recipient Management

Records Management

### Answer Area

Admin1

Role group

Admin2

Role group

**Correct Answer:**

Role Groups	Answer Area
Compliance Management	Admin1 Records Management
Discovery Management	Admin2 Records Management
Recipient Management	
Records Management	

**Section:** [none]

**Explanation**

**Explanation/Reference:**

Explanation:

Box 1: Records Management

Box 2: Records Management

Users who are members of the Records Management role group can configure compliance features, such as retention policy tags, message classifications, transport rules, and more.

Incorrect Answers:

- Compliance Management

Users who are members of the Compliance Management role group can configure and manage Exchange compliance configuration in accordance with their policies.

- Discovery Management

Administrators or users who are members of the Discovery Management role group can perform searches of mailboxes in the Exchange organization for data that meets specific criteria and can also configure litigation holds on mailboxes.

- Administrators who are members of the Recipient Management role group have administrative access to create or modify Exchange recipients within the Exchange organization.

References: [https://technet.microsoft.com/en-us/library/dd638105\(v=exchg.150\).aspx#Builtin](https://technet.microsoft.com/en-us/library/dd638105(v=exchg.150).aspx#Builtin)

### QUESTION 34

You have an Exchange Server 2016 organization. The organization contains 2,000 mailboxes and 100 distribution groups.

You create a distribution group named Managers and you add 20 users to the group.

You need to ensure that the members of Managers can create new groups and modify the membership of those groups.

Which three actions should you perform? Each correct answer presents part of the solution.

- A. Create a role assignment policy named Managers.
- B. Create a new role group named Managers.
- C. Assign an address book policy (ABP).
- D. Add the MyBaseOptions and MyDistributionGroupMembership management roles the Managers role assignment policy.
- E. Assign the role assignment policy.



<https://vceplus.com/> F. Assign a sharing policy.

G. Add the MyBaseOptions and MyDistributionGroups management roles to the Managers role assignment policy.

**Correct Answer:** AEG

**Section:** [none]

**Explanation**

**Explanation/Reference:**

AE: Management roles can be further combined into larger groupings called management role groups and management role assignment policies, which enable management of feature areas and recipient configuration.

G: The MyDistributionGroups role type is associated with roles that enable individual users to create, modify, and view distribution groups and modify, view, remove, and add members to distribution groups they own.

The MyBaseOptions management role enables individual users to view and modify the basic configuration of their own mailbox and associated settings.

Incorrect Answers:

D: The MyDistributionGroupMembership role type is associated with roles that enable individual users to view and modify their membership in distribution groups in an organization, provided that those distribution groups allow manipulation of group membership.

References: [https://technet.microsoft.com/en-us/library/dd298116\(v=exchg.150\).aspx](https://technet.microsoft.com/en-us/library/dd298116(v=exchg.150).aspx)

### QUESTION 35

Your company has an Exchange Server 2016 organization and a Microsoft Office 365 subscription configured in a hybrid deployment.

You configure the synchronization of on-premises Active Directory accounts to Office 365.

All users connect to email services by using Outlook 2016.

You plan to deploy Office 365 Message Encryption for the mailboxes of two executives named Exec1 and Exec2. The mailboxes are hosted in Office 365.

You need to recommend which actions must be performed to ensure that all of the email messages sent from Exec1 and Exec2 to any recipient on the Internet are encrypted.

Which two actions should you recommend? Each correct answer presents part of the solution.

- A. Deploy Microsoft Azure Rights Management (Azure RMS) to the Office 365 subscription.
- B. Deploy Active Directory Rights Management Services (AD RMS) to the network.
- C. Run the Set-MSOLUserLicense cmdlet.
- D. From the Office 365 Exchange admin center, create a rule.
- E. Install a certificate on the computer of Exec1 and the computer of Exec2.
- F. From the on-premises Exchange admin center, create a transport rule.

**Correct Answer:** AF

**Section:** [none]

**Explanation**

**Explanation/Reference:**

A: Office 365 Message Encryption requires the Azure Rights Management service. Once you have a subscription to this service, you can activate it.

Note: Encryption options for Office 365:

- Azure RMS, including both IRM capabilities and OME
- S/MIME
- TLS
- Encryption of data at rest (through BitLocker)

F: As an administrator, you can create transport rules to enable Microsoft Office 365 Message Encryption. This lets you encrypt any outgoing email messages and remove encryption from encrypted messages coming from inside your organization or from replies to encrypted messages sent from your organization.

To use the transport rule to encrypt messages, your organization must have Windows Azure Rights Management set up for Office 365 Message Encryption.

References: <https://docs.microsoft.com/en-us/rights-management/deploy-use/activate-service>  
<https://technet.microsoft.com/en-us/library/dn569289.aspx>

### QUESTION 36

#### HOTSPOT

You have an Exchange Server 2016 organization. The organization contains 20 resource mailboxes.

You need to ensure that an administrator named Admin1 approves all of the meeting requests sent to the mailboxes.

What command should you run? To answer, select the appropriate options in the answer area.

**Hot Area:**

#### Answer Area

Get-Mailbox -recipienttypedetails RoomMailbox |

	▼
New-ManagementRole	
Set-CalendarProcessing	
Set-CasMailbox	
Set-MailboxAutoReplyConfiguration	
Set-User	

	▼
-AssistantName	
-AutomateProcessing	
-Manager	
-OrganizerInfo	
-ResourceDelegates	

Admin1

**Correct Answer:**

## Answer Area

```
Get-Mailbox -recipienttypedetails RoomMailbox |
```

	▼
New-ManagementRole	
Set-CalendarProcessing	
Set-CasMailbox	
Set-MailboxAutoReplyConfiguration	
Set-User	

	▼
-AssistantName	
-AutomateProcessing	
-Manager	
-OrganizerInfo	
-ResourceDelegates	

Admin1

**Section: [none]**

**Explanation**

**Explanation/Reference:**

Explanation:

Box 1: Set-CalendarProcessing:

Use the Set-CalendarProcessing cmdlet to modify calendar processing options for resource mailboxes, which include the Calendar Attendant, resource booking assistant, and calendar configuration. Note that this cmdlet is effective only on resource mailboxes.

Box 2: - ResourceDelegates

The ResourceDelegates parameter specifies a comma-separated list of users who are resource mailbox delegates. Resource mailbox delegates can approve or reject requests sent to the resource mailbox.

Incorrect Answers:

\* Not Set-MailboxAutoReplyConfiguration:

Use the Set-MailboxAutoReplyConfiguration cmdlet to configure Automatic Replies settings for a specific mailbox.

References: [https://technet.microsoft.com/en-us/library/dd335046\(v=exchg.160\).aspx](https://technet.microsoft.com/en-us/library/dd335046(v=exchg.160).aspx)

## QUESTION 37

You deploy an Exchange Server 2016 organization.

You create a data loss prevention (DLP) rule package.

You need to import the rule package.

Which cmdlet should you use?

- A. New-MessageClassification
- B. New-DlpPolicy
- C. New-DataClassification
- D. New-ClassificationRuleCollection

**Correct Answer: D**

**Section: [none]**

**Explanation**

**Explanation/Reference:**

<https://exchangemaster.wordpress.com/2013/05/15/creating-custom-dlp-classification-rules-and-policy/>

[https://technet.microsoft.com/en-us/library/jj218619\(v=exchg.160\).aspx](https://technet.microsoft.com/en-us/library/jj218619(v=exchg.160).aspx)

### QUESTION 38

DRAG DROP

You need to configure the Sender Policy Framework (SPF) for a domain named contoso.com to ensure that only the following senders are authorized to send email for contoso.com:

- Hosts listed in the contoso.com MX records ▪
- IP addresses in the 131.107.1.0/24 subnet

How should you configure the DNS record for the SPF? To answer, drag the appropriate values to the correct targets. Each value may be used once, more than once, or not at all. You may need to drag the split bar between panes or scroll to view content.

**Select and Place:**

## Values

<input type="text" value="?all"/>
<input type="text" value="+all"/>
<input type="text" value="-all"/>
<input type="text" value="131.107.1.0/24"/>
<input type="text" value="A"/>
<input type="text" value="contoso.com"/>
<input type="text" value="IP4"/>
<input type="text" value="MX"/>

Correct Answer:

## Answer Area

contoso.com IN TXT "v=spf1

Value

:

Value

Value

## Values

?all

+all

A

MX

## Answer Area

contoso.com IN TXT "v=spf1

IP4

: 131.107.1.0/24

contoso.

Section: [none]

Explanation

Explanation/Reference:

Explanation:

A typical SPF TXT record for Office 365 has the following syntax: v=spf1  
[<ip4>|<ip6>:<IP address>] [include:<domain name>] <enforcement rule>

Enforcement rule is usually one of the following:

-all

Indicates hard fail. If you know all of the authorized IP addresses for your domain, list them in the SPF TXT record and use the -all (hard fail) qualifier. Also, if you are only using SPF, that is, you are not using DMARC or DKIM, you should use the -all qualifier. We recommend that you use always this qualifier.

References: [https://technet.microsoft.com/en-us/library/mt712724\(v=exchg.150\).aspx](https://technet.microsoft.com/en-us/library/mt712724(v=exchg.150).aspx)

### QUESTION 39

#### HOTSPOT

Your company has an Exchange Server 2016 organization. The organization contains two Mailbox servers and one Edge Transport server.

You need to modify the anti-spam strategy of the organization to resolve the following issues:

Users in the marketing department report that most email messages identified as spam are legitimate.

Users in the human resources department report that they receive hundreds of email messages daily, which contain the phrase "Free Vacation".

Which cmdlet should you use to resolve each issue? To answer, select the appropriate options in the answer area.

**Hot Area:**

**Answer Area**

The marketing department users report that most email messages identified as spam are legitimate:

	▼
Set-DistributionGroup	
Set-Mailbox	
Set-OrganizationConfig	
Set-TransportConfig	

The human resources department users report that they receive hundreds of email messages daily, which contain the phrase "Free Vacation":

	▼
Set-ContentFilterConfig	
Set-DistributionGroup	
Set-OrganizationConfig	
Set-TransportServer	

**Correct Answer:**



**Answer Area**

The marketing department users report that most email messages identified as spam are legitimate:

	▼
Set-DistributionGroup	
Set-Mailbox	
Set-OrganizationConfig	
Set-TransportConfig	

The human resources department users report that they receive hundreds of email messages daily, which contain the phrase "Free Vacation":

	▼
Set-ContentFilterConfig	
Set-DistributionGroup	
Set-OrganizationConfig	
Set-TransportServer	

**Section: [none]**

**Explanation**

**Explanation/Reference:**

Explanation:

Box 1: Set-DistributionGroup

Box 2: Set-ContentFilterConfig

Use the Set-ContentFilterConfig cmdlet to modify the content filter configuration on a Mailbox server or an Edge Transport server.

Content filtering evaluates inbound email messages by assessing the probability that the messages are legitimate or spam.

References: [https://technet.microsoft.com/en-us/library/bb124739\(v=exchg.160\).aspx](https://technet.microsoft.com/en-us/library/bb124739(v=exchg.160).aspx)

#### **QUESTION 40**

**HOTSPOT**

You have an Exchange Server 2016 organization. The organization contains 5,000 mailboxes.

All of the users in the organization share their Calendar with the users in two domains named contoso.com and fabrikam.com.

You need to prevent the organization users from sharing their Calendar with the users in the contoso.com domain.

What command should you run? To answer, select the appropriate options in the answer area.

**Hot Area:**

Correct Answer:

Section: [none]

### Answer Area

	▼
Set-CasMailbox	
Set-Mailbox	
Set-SharingPolicy	

identity "Default Sharing Policy (DEFAULT)"

-domains contoso.com: 1
-domains fabrikam.com: 1

Explanation

### Answer Area

	▼
Set-CasMailbox	
Set-Mailbox	
Set-SharingPolicy	

identity "Default Sharing Policy (DEFAULT)"

-domains contoso.com: 1
-domains fabrikam.com: 1

### Explanation/Reference:

Explanation:

Use the Set-SharingPolicy cmdlet to modify existing sharing policies that control how users inside your organization can share free/busy and contact information with users outside your organization.

This example modifies the sharing policy Fabrikam for Fabrikam.com, which is a domain outside your organization. This policy allows users in the Fabrikam domain to see simple free/busy information.

Set-SharingPolicy -Identity Fabrikam -Domains "mail.Fabrikam.com: CalendarSharingFreeBusySimple"

References: [https://technet.microsoft.com/en-us/library/dd297931\(v=exchg.160\).aspx](https://technet.microsoft.com/en-us/library/dd297931(v=exchg.160).aspx)

#### QUESTION 41

##### HOTSPOT

You have an Exchange Server organization. The organization contains four servers. The servers configured as shown in the following table.



Server name	Exchange Server version	Role	Configuration
EX1	2013	Client Access Server	Provides MAPI access for a third-party application
EX2	2013	Mailbox Server	Hosts public folders that are accessed by using Microsoft Outlook 2013
EX3	2010	Mailbox Server, Hub Transport server	Filters the content of all email messages from the Internet by using the content filtering agent
EX4	2010	Mailbox server	Provides retention by using managed folders

You plan to upgrade the organization to Exchange Server 2016.

You need to identify which functionalities from the current environment can be implemented in Exchange Server 2016.

What should you identify? To answer, select the appropriate options in the answer area.

**Hot Area:**

## Answer Area

Provide MAPI access for a third-party application:

	▼
Yes	
No	

Host public folders that are accessed by using Microsoft Outlook 2013:

	▼
Yes	
No	

Filter content of all email messages from the Internet by using the content filtering agent:

	▼
Yes	
No	



Provide retention by using managed folders:

	▼
Yes	
No	

Correct Answer:

## Answer Area

Provide MAPI access for a third-party application:

	▼
Yes	
No	

Host public folders that are accessed by using Microsoft Outlook 2013:

	▼
Yes	
No	

Filter content of all email messages from the Internet by using the content filtering agent:

	▼
Yes	
No	



Provide retention by using managed folders:

	▼
Yes	
No	

**Section:** [none]

**Explanation**

**Explanation/Reference:**

Box 1: No

Discontinued features from Exchange 2013 to Exchange 2016 include:

The MAPI/CDO library has been replaced by Exchange Web Services (EWS), Exchange ActiveSync (EAS), and Representational State Transfer (REST)\* APIs. If an application uses the MAPI/CDO library, it needs to move to EWS, EAS, or the REST APIs to communicate with Exchange 2016.

Box 2: Yes

Public folders are available in the following Outlook clients: Outlook on the web for Exchange 2016, Outlook 2007 or later, and Outlook for Mac.

Box 3: Yes

Content filtering evaluates inbound email messages by assessing the probability that the messages are legitimate or spam. Unlike other filtering technologies, the content filtering uses characteristics from a statistically significant sample of legitimate messages and spam to make its determination. Content filtering in Exchange Server 2016 is provided by the Content Filter agent, and is basically unchanged from Exchange Server 2010.

Box 4: No

In Exchange 2010, you use managed folders for messaging retention management (MRM). In Exchange 2016, managed folders aren't supported. You must use retention policies for MRM.

References:

[https://technet.microsoft.com/en-us/library/jj619283\(v=exchg.160\).aspx](https://technet.microsoft.com/en-us/library/jj619283(v=exchg.160).aspx) [https://technet.microsoft.com/en-us/library/mt577271\(v=exchg.160\).aspx](https://technet.microsoft.com/en-us/library/mt577271(v=exchg.160).aspx) [https://technet.microsoft.com/en-us/library/bb124739\(v=exchg.160\).aspx](https://technet.microsoft.com/en-us/library/bb124739(v=exchg.160).aspx)

#### QUESTION 42

You have an Exchange Server 2016 organization.

All users work from a main office and use Microsoft Outlook 2016.

You recently ran the Microsoft Office 365 Hybrid Configuration Wizard and moved most of the user mailboxes to Exchange Online. A network administrator reports an increase in the amount of outbound SMTP traffic from the network.

You need to reduce the amount of bandwidth utilization for the outbound SMTP traffic.

What should you do?

- A. From the Exchange Server organization, create a Receive connector that uses the IP address of Exchange Online as a remote range.
- B. From the public DNS zone, modify the MX record to point to Exchange Online.
- C. From the public DNS zone, modify the SRV record to point to Exchange Online.
- D. From the Exchange Server organization, create a Send connector that uses Exchange Online as an SMTP smart host.

**Correct Answer: B**

**Section: [none]**

**Explanation**

**Explanation/Reference:**

The path messages sent to recipients in your on-premises and Exchange Online organizations take depends on how you decide to configure your MX record in your hybrid deployment. The Hybrid Configuration wizard doesn't configure the routing for inbound Internet messages for either the on-premises or Exchange Online organizations. You must manually configure your MX record if you want to change how your inbound Internet mail is delivered.

References: [https://technet.microsoft.com/en-us/library/jj659050\(v=exchg.150\).aspx](https://technet.microsoft.com/en-us/library/jj659050(v=exchg.150).aspx)

**QUESTION 43**

**HOTSPOT**

You have an Exchange Server 2016 organization named Contoso.

You create an organization relationship with a partner's Exchange Server organization named Fabrikam. The users in Fabrikam can view the free/busy information of all the users in Contoso.

You need to ensure that the users in Fabrikam can view the custom Mail Tips configured in Contoso.

What command should you run in Contoso? To answer, select the appropriate options in the answer area.

**Hot Area:**

**Answer Area**

	▼	"Fabrikam"		▼		▼
Set-IntraOrganizationConnector					-MailTipsAccessEnabled	\$True
Set-OrganizationConfig					-MailTipsAccessLevel	All
Set-OrganizationRelationship					-MailTipsAccessScope	

**Correct Answer:**

## Answer Area

	▼
Set-IntraOrganizationConnector	
Set-OrganizationConfig	
Set-OrganizationRelationship	

"Fabrikam"

	▼
-MailTipsAccessEnabled	
-MailTipsAccessLevel	
-MailTipsAccessScope	

	▼
\$True	
All	

Section: [none]

Explanation

**Explanation/Reference:**

Explanation:

Box 1: Set-OrganizationRelationship

Use the **Set-OrganizationRelationship** cmdlet to modify existing organization relationships. Organization relationships define the settings that are used with external Exchange organizations to access calendar free/busy information or to move mailboxes between on-premises Exchange servers and Exchange Online as part of hybrid deployments.

Box 2, box 3:

The MailTipsAccessEnabled parameter specifies whether MailTips data for users in this organization are returned over this organization relationship. The accepted values are \$true or \$false. The default value is \$false.

References: [https://technet.microsoft.com/en-us/library/ee332326\(v=exchg.160\).aspx](https://technet.microsoft.com/en-us/library/ee332326(v=exchg.160).aspx)

### QUESTION 44

DRAG DROP

You have an Exchange Server 2016 organization. The organization contains five servers. The servers are configured as shown in the following table:

Server name	Role	Active Directory site
EX01	Mailbox server	New York
EX02	Mailbox server	New York
EX03	Mailbox server	London
EX04	Mailbox server	London
SRV01	File share witness	New York
SRV02	Alternate file share witness	London

EX01, EX02, EX03, and EX04 are members of a database availability group (DAG) named DAG01.

The data center in New York fails.

You need to activate DAG01 in the London site.

Which three commands should you run in sequence? To answer, move the appropriate commands from the list of commands to the answer area and arrange them in the correct order.

**Select and Place:**

## Commands

```
Start-DatabaseAvailabilityGroup -Identity  
DAG01 -ActiveDirectorySite "New York"
```

```
Restore-DatabaseAvailabilityGroup -Identity  
DAG01 -ActiveDirectorySite "New York"
```

```
Set-Service -Name clussvc -ComputerName  
EX03 -Status Stopped  
Set-Service -Name clussvc -ComputerName  
EX04 -Status Stopped
```

```
Stop-DatabaseAvailabilityGroup -identity  
DAG01 -ActiveDirectorySite "New York"  
-ConfigurationOnly $TRUE
```

```
Stop-DatabaseAvailabilityGroup -identity  
DAG01 -ActiveDirectorySite "New York"  
-ConfigurationOnly $FALSE
```

```
Restore-DatabaseAvailabilityGroup -Identity  
DAG01 -ActiveDirectorySite "London"  
-AlternateWitnessServer SRV02  
-AlternateWitnessDirectory D:\DAG1
```

```
Start-DatabaseAvailabilityGroup -Identity  
DAG01 -ActiveDirectorySite "London"
```

## Answer Area



**Correct Answer:**



## Commands

```
Start-DatabaseAvailabilityGroup -Identity  
DAG01 -ActiveDirectorySite "New York"
```

```
Restore-DatabaseAvailabilityGroup -Identity  
DAG01 -ActiveDirectorySite "New York"
```

```
Set-Service -Name clussvc -ComputerName  
EX03 -Status Stopped  
Set-Service -Name clussvc -ComputerName  
EX04 -Status Stopped
```

```
Stop-DatabaseAvailabilityGroup -identity  
DAG01 -ActiveDirectorySite "New York"  
-ConfigurationOnly $FALSE
```

```
Start-DatabaseAvailabilityGroup -Identity  
DAG01 -ActiveDirectorySite "London"
```

## Answer Area

```
Stop-DatabaseAvailabilityGroup -identity  
DAG01 -ActiveDirectorySite "New York"  
-ConfigurationOnly $TRUE
```

```
Set-Service -Name clussvc -ComputerName  
EX01 -Status Stopped  
Set-Service -Name clussvc -ComputerName  
EX02 -Status Stopped
```

```
Restore-DatabaseAvailabilityGroup -Identity  
DAG01 -ActiveDirectorySite "London"  
-AlternateWitnessServer SRV02  
-AlternateWitnessDirectory D:\DAG1
```



**Section: [none]**

**Explanation**

**Explanation/Reference:**

**QUESTION 45**

**DRAG DROP**

You have an Exchange Server 2016 organization. The organization contains two Mailbox servers.

You have a database that is replicated to both servers. The database contains 500 mailboxes.

You add new volumes to the Mailbox servers.

You need to move all of the mailbox data to the new volumes. The solution must meet the following requirements:

- Ensure that multiple copies of the mailbox data are available at all times.
- Minimize downtime for the mailbox users.

Which three actions should you perform in sequence? To answer, move the appropriate actions from the list of actions to the answer area and arrange them in the correct order.

**Select and Place:**



**Actions**

- Remove all of the replicated database copies.
- Create a new database.
- Dismount the replicas of the database.
- Move the database.
- Mount the new database.
- Move the mailboxes.
- Mount the replicas of the database
- Create replicated database copies.

**Answer Area**



**Correct Answer:**

Actions		Answer Area
		Remove all of the replicated database copies.
Create a new database.		Move the database.
Dismount the replicas of the database.		Create replicated database copies.
	➤	
	⬅	
Mount the new database.		
Move the mailboxes.		
Mount the replicas of the database		

**Section:** [none]

**Explanation**

**Explanation/Reference:**

Explanation:

Use the Move-DatabasePath cmdlet to set a new path to the location of a database on the specified Mailbox server and to move the related files to that location.

If the specified database is mounted when this cmdlet is run, the database is automatically dismounted and then remounted, and is unavailable to users while it's dismounted.

This cmdlet can't be run against replicated mailbox databases. To move the path of a replicated database, you must first remove all replicated copies, and then you can perform the move operation. After the move operation is complete, you can add copies of the mailbox database.

Note: A mailbox database can be moved, but before you proceed consider that the move requires the database to be dismounted and taken offline, so it will not be accessible by your mailbox users during the move. This is fine if the server has just been set up and there are no mailboxes on it, but if you're moving a database with active mailbox users a better option would be to create a new database on the new volume and perform mailbox moves (which are non-disruptive to end users).

References: [https://technet.microsoft.com/en-us/library/bb124742\(v=exchg.160\).aspx](https://technet.microsoft.com/en-us/library/bb124742(v=exchg.160).aspx)

#### QUESTION 46

DRAG DROP

##### Case study

##### Overview

Relecloud is manufacturing company that has 25,000 employees. The company has sales, marketing, human resources, development, research, accounting, and quality assurance departments.



<https://vceplus.com/>



Relecloud has a single office located in Montreal.

##### Active Directory Environment

The network contains a single Active Directory forest named relecloud.com. The forest contains a single domain and a single Active Directory site.

All servers run Windows Server 2012 R2 and are members of the domain. All client computers run Windows 10 and are members of the domain.

The Active Directory forest is prepared for Exchange Server 2016.

##### Email Environment

Relecloud has an Exchange Server 2013 Service Pack (SP1) organization. The organization contains six servers. The servers are configured as shown in the following table.

Server name	Role
EX1	Mailbox server
EX2	Mailbox server
EX3	Mailbox server Client Access server
EX4	Mailbox server Client Access server
EX5	Client Access server
EdgeEX	Edge Transport server

The organization has the following configurations:

- EX1, EX2, and EX3 are members of a database availability group (DAG) named DAG1.
- Edge Synchronization is configured for the Active Directory site.
- All client computers have Microsoft Outlook 2013 SP1 installed.
- All inbound and outbound mail flow is routed through EdgeEX.
- Antispam transport agents are configured on EdgeEX.
- Active Directory split permissions are enabled.
- Outlook Anywhere is enabled.

Developers at Relecloud develop applications that send email notifications. These notifications are sent by using an SMTP client.

### Requirements

#### Planned Changes

Relecloud plans to upgrade all of the Mailbox and Client Access servers to Exchange Server 2016.

The servers will host all of the mailboxes in the organization. The SMTP clients used by the development department users will use the new email servers to relay email messages.

### Connectivity Requirements

Relecloud identifies the following connectivity requirements:

- The default connection method for the Outlook clients must be MAPI over HTTP.
- All Exchange ActiveSync users must be prevented from sending email messages that are larger than 1 MB.

**Compliance Requirements**

Relecloud identifies the following compliance requirements:

- Prevent all users in the organization from deleting email messages that contain the word RelecloudFutures.
- Log all of the details that relate to the creation of new mailboxes.

**Availability Requirements:**

Relecloud identifies the following availability requirements:

- Implement a new Exchange Server 2016 DAG.
- Maintain multiple copies of the mailbox information during the upgrade process to Exchange Server 2016.

You need to recommend which actions must be performed to upgrade the organization to Exchange Server 2016. The solution must meet the availability requirements.

Which five actions should you recommend be performed in sequence? To answer, move the appropriate actions from the list of actions to the answer area and arrange them in the correct order.

**Select and Place:**



### Actions

### Answer Area

Install Exchange Server 2016 on EX4 and EX5.

Add EX1, EX2, and EX3 to DAG2.

Add EX4 and EX5 to DAG2.

Create a DAG named DAG2.

Add the new servers to DAG2.

Create mailbox database copies on all the members of DAG2.

Move the mailboxes from DAG1 to DAG2.

Install two new servers that have Exchange Server 2016 installed.



**Correct Answer:**



### Actions

Install Exchange Server 2016 on EX4 and EX5.

Add EX1, EX2, and EX3 to DAG2.

Add EX4 and EX5 to DAG2.

### Answer Area

Install two new servers that have Exchange Server 2016 installed.

Create a DAG named DAG2.

Add the new servers to DAG2.

Create mailbox database copies on all the members of DAG2.

Move the mailboxes from DAG1 to DAG2.



**Section: [none]**

**Explanation**

**Explanation/Reference:**

#### **QUESTION 47**

**HOTSPOT**

**Case study**

**Overview**

Relecloud is manufacturing company that has 25,000 employees. The company has sales, marketing, human resources, development, research, accounting, and quality assurance departments.

Relecloud has a single office located in Montreal.

#### **Active Directory Environment**

The network contains a single Active Directory forest named relecloud.com. The forest contains a single domain and a single Active Directory site.

All servers run Windows Server 2012 R2 and are members of the domain. All client computers run Windows 10 and are members of the domain.

The Active Directory forest is prepared for Exchange Server 2016.

#### **Email Environment**

Relecloud has an Exchange Server 2013 Service Pack (SP1) organization. The organization contains six servers. The servers are configured as shown in the following table.

Server name	Role
EX1	Mailbox server
EX2	Mailbox server
EX3	Mailbox server Client Access server
EX4	Mailbox server Client Access server
EX5	Client Access server
EdgeEX	Edge Transport server

The organization has the following configurations:

- EX1, EX2, and EX3 are members of a database availability group (DAG) named DAG1.
- Edge Synchronization is configured for the Active Directory site. ▪

All client computers have Microsoft Outlook 2013 SP1 installed.

- All inbound and outbound mail flow is routed through EdgeEX.
  - Antispam transport agents are configured on EdgeEX.
  - Active Directory split permissions are enabled. ▪
- Outlook Anywhere is enabled.

Developers at Relecloud develop applications that send email notifications. These notifications are sent by using an SMTP client.

### **Requirements**

#### **Planned Changes**

Relecloud plans to upgrade all of the Mailbox and Client Access servers to Exchange Server 2016.

The servers will host all of the mailboxes in the organization. The SMTP clients used by the development department users will use the new email servers to relay email messages.

#### **Connectivity Requirements**

Relecloud identifies the following connectivity requirements:

- The default connection method for the Outlook clients must be MAPI over HTTP.
- All Exchange ActiveSync users must be prevented from sending email messages that are larger than 1 MB.

#### **Compliance Requirements**

Relecloud identifies the following compliance requirements:

- Prevent all users in the organization from deleting email messages that contain the word RelecloudFutures.
- Log all of the details that relate to the creation of new mailboxes.

#### **Availability Requirements:**

Relecloud identifies the following availability requirements:

- Implement a new Exchange Server 2016 DAG.
- Maintain multiple copies of the mailbox information during the upgrade process to Exchange Server 2016.

You need to meet the compliance requirements for the creation of new mailboxes after the planned upgrade.

What command should you run? To answer, select the appropriate options in the answer area.

Hot Area:

Answer Area

	▼
New-Mailbox	
Set-AdminAuditLogConfig	
Set-Mailbox	

	▼
-AdminAuditLogCmdlets	
-AuditEnabled	
-AuditOwner	

	▼
-"Mailbox"	
-"New-Mailbox"	
\$True	

Correct Answer:

Answer Area

	▼
New-Mailbox	
Set-AdminAuditLogConfig	
Set-Mailbox	

	▼
-AdminAuditLogCmdlets	
-AuditEnabled	
-AuditOwner	

	▼
-"Mailbox"	
-"New-Mailbox"	
\$True	

Section: [none]

**Explanation****Explanation/Reference:**

[https://technet.microsoft.com/en-us/library/bb123981\(v=exchg.160\).aspx](https://technet.microsoft.com/en-us/library/bb123981(v=exchg.160).aspx)

**QUESTION 48**

You have a hybrid Exchange Server 2016 organization.

Some of the mailboxes in the research department are hosted on-premises. Other mailboxes in the research department are stored in Microsoft Office 365.

You need to search the mailboxes in the research department for email messages that contain a specific keyword in the message body.

What should you do?

- A. From the Exchange Online Exchange admin center, search the delivery reports.
- B. Form the on-premises Exchange center, search the delivery reports.
- C. From the Exchange Online Exchange admin center, create a new In-Place eDiscovery & Hold.
- D. From the Office 365 Compliance Center, create a new Compliance Search.
- E. From the on-premises Exchange admin center, create a new In-Place eDiscovery & Hold.

**Correct Answer: E**

**Section: [none]**

**Explanation****Explanation/Reference:**

[https://technet.microsoft.com/en-us/library/dd298021\(v=exchg.160\).aspx#howitworks](https://technet.microsoft.com/en-us/library/dd298021(v=exchg.160).aspx#howitworks)

**QUESTION 49****HOTSPOT**

This is a case study. Case studies are not timed separately. You can use as much exam time as you would like to complete each case. However, there are may be additional case studies and sections on this exam. You must manage your time to ensure that you are able to complete all questions included on this exam in the time provided.

To answer the questions included in a case study, you will need to reference information that is provided in the case study. Case studies might contain exhibits and other resources that provide more information about the scenario that is described in the case study. Each question is independent of the other questions in this case study.

At the end of this case study, a review screen will appear. This screen allows you to review your answers and to make changes before you move to the next section of the exam. After you begin a new section, you cannot return to this section.

To start the case study

To display the first question in this cases study, click the Next button. Use the buttons in the left pane to explore the content of the case study before you answer the questions. Clicking these buttons displays information such as business requirements, existing environment, and problem statements. Note that the information displayed on the All Information tab is identical to the information displayed on the subsequent tabs. When you are ready to answer a question, click the Question button to return to the question.

## **Overview**

### **General Overview**

Contoso, Ltd. is an international company that has 3,000 employees. The company has sales, marketing, research, and human resource departments.

### **Physical Locations**

Contoso has two main offices. The offices are located in New York and Chicago. Each office has a data center.

The New York office uses a network subnet of 10.1.0.0/16. The Chicago office uses a network subnet of 10.128.0.0/16.

The offices connect to each other by using a WAN link. Each office connects directly to the Internet.

### **Existing Environment**

#### **Active Directory**

The network contains an Active Directory forest named contoso.com. The forest contains a single domain. All domain controllers run Windows Server 2012 R2. The forest functional level is Windows Server 2012 R2.

The forest contains six domain controllers configured as shown in the following table.

Server name	Office	Global Catalog
DC01	Chicago	YES
DC02	Chicago	YES
DC03	Chicago	NO
DC04	New York	YES
DC05	New York	YES
DC06	New York	YES

The forest is configured as a single Active Directory site.

Active Directory administrators manage the Active Directory schema. Exchange Server administrators do not have access to modify the schema.

Contoso has deployed Active Directory Rights Management Services (AD RMS).

### Current Business Model

Contoso partners with a company names Fabrikam, Inc. on manufacturing initiatives. The partnership between Contoso and Fabrikam requires that both companies share confidential information frequently.

### Requirements

#### Business Goals

Contoso plans to install Exchange Server 2016 to provide messaging services for its users.

It must be as easy as possible for the users at Contoso to share free/busy information with the users at Fabrikam.

As much as possible, Contoso plans to minimize the costs associated with purchasing hardware and software.

### Planned Changes

Contoso plans to implement the following changes before installing Exchange Server 2016:

- Install hardware Network Load Balancing (NLB) devices in the New York and Chicago offices.
- Implement Microsoft Office Online Servers in the New York and Chicago offices.
- Provide Contoso users with company-approved tablets.

### Planned Messaging Infrastructure

You plan to create an Exchange Server 2016 organization named Contoso. You plan to deploy seven servers that will have Exchange Server 2016 installed. The servers will be configured as shown in the following table.

Server name	Office	Global Catalog
EX01	Chicago	Mailbox server
EX02	Chicago	Mailbox server
EX03	Chicago	Mailbox server
EX04	New York	Mailbox server
EX05	New York	Mailbox server
EX06	New York	Mailbox server
FS1	Chicago	File share witness

All of the servers will be members of a database availability group (DAG) named DAG01.

### Client Access Requirements

Contoso identifies the following client access requirements for the planned deployment:

- Users must be able to configure their tablet to synchronize email by using Autodiscover.
- Users must be able to access the Exchange Server organization by using the following names:
  - Mail.contoso.com
  - Autodiscover.contoso.com
- Users must be able to access Outlook on the web internally and externally from their tablet.
- Users must be able to access Office Online Server by using the URL of office-online.contoso.com.

### Security Requirements

Contoso identifies the following security requirements for the planned deployment:

- Exchange Server mailbox databases must be encrypted while at rest.

- Users must be prevented from using Outlook on the web while they are offline.
- Contoso users must be able to share Calendar details with approved external domains only.
- Email messages sent to the users in the fabrikam.com SMTP domain must be encrypted automatically.
- Whenever possible, client computers must be directed to the same Exchange server for log collection.
- Users must be able to access their mailbox by using Exchange ActiveSync on the company-approved tablets only.
- Email messages sent from the users in the human resources department of Contoso must be protected by using AD RMS, regardless of the mail client.

### Availability Requirements

Contoso identifies the following high-availability requirements for the planned deployment:

- Servers must be able to complete a restart without administrative intervention.
- The network load balancer must be able to probe the health of each workload.
- If a data center fails, the databases in the other data center must be activated automatically.
- Redundant copies of all email messages must exist in the transport pipeline before and after delivery.
- Email messages must be made highly available by the Exchange Server organization before and after delivery.
- If you manually mount the databases following the data center failure, the databases in the failed site must be prevented from mounting automatically.

You need to configure DAG01 to meet the availability requirements.

What command should you run? To answer, select the appropriate options in the answer area.

**Hot Area:**

Answer Area

<div style="border: 1px solid black; padding: 2px; text-align: right;">▼</div> <div style="border: 1px solid black; padding: 5px;"> Set-DatabaseAvailabilityGroup  Set-MailboxDatabase  Set-MailboxServer </div>	<div style="border: 1px solid black; padding: 2px; text-align: right;">▼</div> <div style="border: 1px solid black; padding: 5px;"> -Identity DAG01 </div>	<div style="border: 1px solid black; padding: 2px; text-align: right;">▼</div> <div style="border: 1px solid black; padding: 5px;"> -ActivityState  -DatabaseCopyAutoActivationPolicy  -DatcenterActivationMode  -ForceRediscover </div>
--	--	--

Correct Answer:

Answer Area

<div style="border: 1px solid black; padding: 2px; text-align: right;">▼</div> <div style="border: 1px solid black; padding: 5px;"> Set-DatabaseAvailabilityGroup  Set-MailboxDatabase  Set-MailboxServer </div>	<div style="border: 1px solid black; padding: 2px; text-align: right;">▼</div> <div style="border: 1px solid black; padding: 5px;"> -Identity DAG01 </div>	<div style="border: 1px solid black; padding: 2px; text-align: right;">▼</div> <div style="border: 1px solid black; padding: 5px;"> -ActivityState  -DatabaseCopyAutoActivationPolicy  -DatcenterActivationMode  -ForceRediscover </div>
--	--	--

Section: [none]

## Explanation

### Explanation/Reference:

[https://technet.microsoft.com/en-us/library/dd297934\(v=exchg.160\).aspx](https://technet.microsoft.com/en-us/library/dd297934(v=exchg.160).aspx) [https://technet.microsoft.com/en-us/library/dd979790\(v=exchg.150\).aspx](https://technet.microsoft.com/en-us/library/dd979790(v=exchg.150).aspx)

## QUESTION 50

### HOTSPOT

You have an Exchange Server 2010 organization.

You plan to upgrade to Exchange Server 2016.

You have two Active Directory sites configured as shown in the following table.

Site Name	Internet-facing
Brussels	No
New York	Yes

You have five servers configured as shown in the following table.

Server name	Exchange Server version	Role	Active Directory site
EX01	2010	Mailbox server	Brussels
CAS01	2010	Client Access server, Hub Transport server	Brussels
EX02	2010	Mailbox server	New York
CAS02	2010	Client Access server, Hub Transport server	New York
EX03	2016	Mailbox server	New York

You have three users who have mailboxes configured as shown in the following table.

User Name	Mailbox server location
User1	EX01
User2	EX02
User3	EX03

You have the following configurations:

- The OWA virtual directory ExternalUrl on CAS01 and CAS02 is \$null.
  - The OWA virtual directory ExternalUrl on EX03 is <https://mail.contoso.com/owa>.

For each of the following statements, select Yes if statements is true. Otherwise, select No.

**Hot Area:**

**Answer Area**

**Statements**

User1 will be proxied to CAS01 when accessing Outlook on the web from the Internet.

Yes

☐

No

☐

User2 will be proxied to CAS02 when accessing Outlook on the web from the Internet.

☐☐

User3 will be redirected to CAS01 when accessing Outlook on the web from the Internet.

☐☐

**Correct Answer:**

**Answer Area**

**Statements**

User1 will be proxied to CAS01 when accessing Outlook on the web from the Internet.

Yes

☒

No

☐

User2 will be proxied to CAS02 when accessing Outlook on the web from the Internet.

☒
☐

User3 will be redirected to CAS01 when accessing Outlook on the web from the Internet.

☐
☒

**Section:** [none]

**Explanation**

**Explanation/Reference:**

<https://blogs.technet.microsoft.com/exchange/2015/10/26/client-connectivity-in-an-exchange-2016-coexistence-environment-with-exchange-2010/>

**QUESTION 51**

**HOTSPOT**

A company named Contoso, Ltd. deploys Exchange Server 2016.

Contoso plans to establish a hybrid deployment between Exchange Server and a new Microsoft Office 365 tenant.

You need to identify which relative URL paths in the on-premises environment will be accessed by the Office 365 tenant.

What should you identify? To answer, select the appropriate options in the answer area.

Hot Area:

**Answer Area**

MailTips:

	▼
/autodiscover/autodiscover.svc	
/ews/exchange.asmx/wssecurity	
/ews/mrsproxy.svc	

Mailbox migrations:



	▼
/autodiscover/autodiscover.svc	
/ews/exchange.asmx/wssecurity	
/ews/mrsproxy.svc	

Correct Answer:

**Answer Area**

MailTips:

	▼
/autodiscover/autodiscover.svc	
/ews/exchange.asmx/wssecurity	
/ews/mrsproxy.svc	

Mailbox migrations:

	▼
/autodiscover/autodiscover.svc	
/ews/exchange.asmx/wssecurity	
/ews/mrsproxy.svc	

Section: [none]

Explanation

Explanation/Reference:

<http://msexchangeguru.com/2015/05/21/e2013-hybrid-part-1/>

**QUESTION 52**

HOTSPOT

You have an Active Directory forest named contoso.com that contains an Exchange Server 2016 organization named Contoso.

Contoso.com has a two-way forest trust with an Active Directory forest named fabrikm.com. The fabrikm.com forest contains an Exchange Server 2016 organization named Fabrikam.

You need to ensure that the users in Contoso can access the free/busy information of all the users in Fabrikam.

An administrator from Fabrikam runs the following command in the organization.

Get-MailboxServer | Add-ADPermission –Accessrights Extendedright –Extendedrights “ms-Exch-EPI-Token-Serialization” –User “CONTOSO\Exchange Servers”

What command should you run in Contoso? To answer, select the appropriate options in the answer area.

**Hot Area:**

**Answer Area**

<div> <div>▼</div> <div> Add-AvailabilityAddressSpace  Set-AvailabilityConfig </div> </div>	<div> <div>▼</div> <div> -ForestName Contoso.com  -ForestName Fabrikam.com </div> </div>
<div> <div>▼</div> <div> -AccessMethod OrgWideFB </div> </div>	<div> <div>▼</div> <div> -UseServiceAccount \$false  -UseServiceAccount \$true </div> </div>

**Correct Answer:**

**Answer Area**

Add-AvailabilityAddressSpace  
Set-AvailabilityConfig

-AccessMethod OrgWideFB

-ForestName Contoso.com  
-ForestName Fabrikam.com

-UseServiceAccount \$false  
-UseServiceAccount \$true

**Section:** [none]

**Explanation**

**Explanation/Reference:**

[https://technet.microsoft.com/en-us/library/bb124122\(v=exchg.160\).aspx](https://technet.microsoft.com/en-us/library/bb124122(v=exchg.160).aspx)

**QUESTION 53**

You have an Exchange Server 2016 organization.

Some users access their mailbox by using an Android or an iOS device.

You need to prevent the users from using OWA for Devices to access their mailbox.

Which cmdlet should you use?

A. Set-CASMailbox

- B. Set-MobileMailboxPolicy C. Set-OWAVirtualDirectory  
D. Set-OWAMailboxPolicy

**Correct Answer:** A

**Section:** [none]

**Explanation**

**Explanation/Reference:**

[https://technet.microsoft.com/en-us/library/bb125264\(v=exchg.160\).aspx](https://technet.microsoft.com/en-us/library/bb125264(v=exchg.160).aspx)

#### QUESTION 54

Your company has an Exchange Server 2016 organization. The organization contains 2,000 mailboxes and five Mailbox servers, including one server named EX1.

Five hundred users retrieve email from their mailboxes by using an IMAP4 client application from the Internet. The users also connect to EX1 to send email messages. All of the email messages are secured by using TLS.

An administrator recently replaced the company's firewall.

Users now report that they fail to send email messages from the IMAP4 client application. You verify that the users can retrieve email messages from their mailbox successfully.

You need to recommend which TCP port must be allowed so that the users can send email messages from the IMAP4 application successfully.

Which TCP port should you recommend?

- A. 443  
B. 587  
C. 993  
D. 995

**Correct Answer:** C

**Section:** [none]

**Explanation**

**Explanation/Reference:**

[https://technet.microsoft.com/en-us/library/jj657728\(v=exchg.160\).aspx](https://technet.microsoft.com/en-us/library/jj657728(v=exchg.160).aspx)

#### QUESTION 55

Your company recently deployed Exchange Server 2016.

Users use a variety of mobile devices to access their mailbox, including iPhones and iPads.

You need to configure security for the users who connect to the corporate network by using their mobile device. The solution must meet the following requirements:

- Users must be required to enter a complex password to unlock their device.
- Only devices that run iOS 8 or later must be allowed to connect to the Exchange Server organization.
- Users who fail to download the security settings defined by the organization must be prevented from accessing their mailbox.

Which cmdlet should you use for each requirement? To answer, drag the appropriate cmdlets to the correct requirements. Each cmdlet may be used once, more than once, or not at all. You may need to drag the split bar between panes or scroll to view content.

**Select and Place:**

**Cmdlets**

New-ActiveSyncDeviceAccessRule

Set-ActiveSyncOrganizationSettings

Set-CASMailbox

Set-MobileDeviceMailboxPolicy

**Answer Area**

**VCEplus**  
VCE To PDF - Free Practice Exam

Users must be required to enter a complex password to unlock their device:

Cmdlet

Users who fail download the security settings defined by the organization must be prevented from accessing their mailbox:

Cmdlet

Only devices that run iOS 8 or later must be allowed to connect to the Exchange Server organization:

Cmdlet

Correct Answer:

Answer Area	
Cmdlets	
	Users must be required to enter a complex password to unlock their device:
Set-ActiveSyncOrganizationSettings	Set-MobileDeviceMailboxPolicy
	Users who fail download the security settings defined by the organization must be prevented from accessing their mailbox:
	Set-CASMailbox
	Only devices that run iOS 8 or later must be allowed to connect to the Exchange Server organization:
	New-ActiveSyncDeviceAccessRule

Section: [none]

Explanation

Explanation/Reference:

[https://technet.microsoft.com/en-us/library/dd876923\(v=exchg.160\).aspx](https://technet.microsoft.com/en-us/library/dd876923(v=exchg.160).aspx)

#### QUESTION 56

Your network contains the servers configured as shown in the following table.

Server name	Role
EX01	Exchange Server 2016 Mailbox server
EX02	Exchange Server 2016 Mailbox server
FS01	File server

You run the New-DatabaseAvailabilityGroup cmdlet and you receive the following error message.

The task was unable to create the default witness directory on server FS01. Please manually specify a witness directory.

+ CategoryInfo : InvalidArgument : (:) [New-DatabaseAvailabilityGroup],

DagFswUnableToBindWitnessDirectoryException

+FullyQualifiedErrorId : [Server=EX01, RequestId=81b106a2-21e7-4ac3-8a23-e2e13e54a9fa, TimeStamp=11/13/2015 3:09:02 PM]

[FailureCategory=CmdletDagFswUnableToBindWitnessDirectoryException]

166B6E12, Microsoft. Exchange. Management. SystemConfigurationTasks. NewDatabaseAvailabilityGroup

+PSComputerName : EX01.contoso.com

You need to ensure that you can create the database availability group (DAG) successfully by using the NewDatabaseAvailabilityGroup cmdlet.

What should you do?

- A. Add the Exchange Trusted Subsystem group to the local Administrators group on FS01.
- B. Add the Delegated Setup role group to the local Administrators group on FS01.
- C. Install the Failover Clustering feature on FS01.
- D. Install the Remote Server Administration Tools feature on FS01.

**Correct Answer:** A

**Section:** [none]

**Explanation**

**Explanation/Reference:**

<http://exchangeserverpro.com/using-a-non-exchange-server-as-an-exchange-2013-dag-file-share-witness/>

## QUESTION 57

### HOTSPOT

You have an Exchange Server 2016 organization. The organization contains three Mailbox servers named EX01, EX02, and EX03. The servers are members of a database availability group (DAG).

You have a mailbox database named DB01. DB01 is replicated to EX01 and EX02.

You need to add a replica of DB01 to EX03. The replica must meet the following requirements:

- Transaction log files must not be applied to the replica for seven days after they are generated.
- Transaction log files must be preserved for one day after they are applied to the database copy.

What command should you run? To answer, select the appropriate options in the answer area.

**Hot Area:**

**Answer Area**

<input type="checkbox"/>	<input type="checkbox"/>	<input type="checkbox"/>
Add-MailboxDatabaseCopy New-MailboxDatabase Set-DatabaseAvailabilityGroup	-Identity DB01 -Identity EX01\DB01 -Identity EX03\DB01	-MailboxServer EX03 -MailboxServer EX03\DB01 -SourceServer EX01
<input type="checkbox"/>	<input type="checkbox"/>	-ActivationPreference 3
-ReplayLagTime 01.00:00:00 -ReplayLagTime 07.00:00:00	-TruncationLagTime 01.00:00:00 -TruncationLagTime 07.00:00:00	

**Correct Answer:**

Answer Area

<div> <div>▼</div> <div> Add-MailboxDatabaseCopy  New-MailboxDatabase  Set-DatabaseAvailabilityGroup </div> </div>	<div> <div>▼</div> <div> -Identity DB01  -Identity EX01\DB01  -Identity EX03\DB01 </div> </div>	<div> <div>▼</div> <div> -MailboxServer EX03  -MailboxServer EX03\DB01  -SourceServer EX01 </div> </div>
<div> <div>▼</div> <div> -ReplayLagTime 01.00:00:00  -ReplayLagTime 07.00:00:00 </div> </div>	<div> <div>▼</div> <div> -TruncationLagTime 01.00:00:00  -TruncationLagTime 07.00:00:00 </div> </div>	<div> <div>▼</div> <div> -ActivationPreference 3 </div> </div>

Section: [none]

Explanation

Explanation/Reference:

[https://technet.microsoft.com/en-us/library/dd298105\(v=exchg.160\).aspx](https://technet.microsoft.com/en-us/library/dd298105(v=exchg.160).aspx)

**QUESTION 58**

HOTSPOT

You deploy a new Exchange Server 2016 organization. The organization contains Two Mailbox servers.

You need to reject email messages if a redundant copy of the messages cannot be generated.

What command should you run? To answer, select the appropriate options in the answer area.

Hot Area:

Answer Area

	▼		▼		▼
Set-TransportConfig		-RejectMessageOnShadowFailure		\$false	
Set-TransportServer		-ShadowMessageAutoDiscardInterval		\$null	
Set-TransportService		-ShadowRedundancyEnabled		\$true	

Correct Answer:

Answer Area

	▼		▼		▼
Set-TransportConfig		-RejectMessageOnShadowFailure		\$false	
Set-TransportServer		-ShadowMessageAutoDiscardInterval		\$null	
Set-TransportService		-ShadowRedundancyEnabled		\$true	

Section: [none]

Explanation

Explanation/Reference:

[https://technet.microsoft.com/en-us/library/dd351027\(v=exchg.150\).aspx](https://technet.microsoft.com/en-us/library/dd351027(v=exchg.150).aspx) [https://technet.microsoft.com/en-us/library/bb124151\(v=exchg.160\).aspx](https://technet.microsoft.com/en-us/library/bb124151(v=exchg.160).aspx)

#### QUESTION 59

You have an exchange Server 2016 organization that uses an SMTP domain named contoso.com.

You need to encrypt all of the SMTP traffic from the organization to a partner organization. The partner organization uses an SMTP domain named litwareinc.com.

Which three commands should you run on your server? Each correct answer presents part of the solution.

- A. New-ReceiveConnector-Name "Connector1"-Usage Internet- Bindings 0.0.0.0:587-DomainSecureEnabled: \$true
- B. Set-TransportConfig-TLSSendDomainSecureList litwareinc.com
- C. New-SendConnector-Usage Partner-Name "Connector1" -AddressSpaces "litwareinc.com" -IgnoreSTARTTLS \$false-DNSRoutingEnabled \$true -DomainSecureEnabled \$true
- D. Set-TransportConfig- TLSReceiveDomainSecureList contoso.com
- E. Set-TransportConfig-TLSReceiveDomainSecureList litwareinc.com
- F. New-SendConnector- Usage Partner -Name "Connector1" -AddressSpaces "contoso.com" -IgnoreSTARTTLS \$false-DNSRoutingEnabled \$ture -DomainSecureEnabled \$true
- G. Set-TransportConfig-TLSSendDomainSecureList contoso.com

**Correct Answer:** CEG

**Section:** [none]

**Explanation**

**Explanation/Reference:**

<http://dizdarevic.ba/ddamirblog/?p=78> [https://technet.microsoft.com/en-us/library/bb124151\(v=exchg.160\).aspx](https://technet.microsoft.com/en-us/library/bb124151(v=exchg.160).aspx) [https://technet.microsoft.com/en-us/library/aa998936\(v=exchg.160\).aspx](https://technet.microsoft.com/en-us/library/aa998936(v=exchg.160).aspx)

#### QUESTION 60

You have an Exchange Server 2016 organization. The organization contains an Edge Transport server.

Users report that a message with the following anti-spam headers is delivered to their Inbox folder in Microsoft Outlook.

```
X-MS-Exchange-Organization-PCL:7
X-MS-Exchange-Organization-SCL:6
X-MS-Exchange-Organization-Antispam-Report: DV: 3.1.3924.1409; SID: SenderIDStatus Fail; PCL: PhishingLevel SUSPICIOUS;
CW: CustomList; PP: Presolved; TIME: TimeBasedFeatures
```

You need to prevent similar messages from being delivered. The solution must generate a non-delivery report (NDR) when the messages are prevented from being delivered to all user mailboxes.

What should you do?



<https://vceplus.com/>

- A. Set the SCL reject threshold to 7.
- B. Run the Set-SenderIdConfig cmdlet.
- C. Set the SCL delete threshold to 7.
- D. Run the Set-TransportConfig cmdlet.
- E. Run the Set-RecipientFilterConfig cmdlet.
- F. Set the SCL delete threshold to 5.

**Correct Answer: C**

**Section: [none]**

**Explanation**

**Explanation/Reference:**

When the message's SCL value is greater than or equal to the SCL reject threshold, but **less than the SCL delete threshold**, the Content Filter agent rejects the message and sends a rejection response to the sending system. You can customize the rejection response. In some cases, a non-delivery report (also known as an NDR, delivery status notification, DSN, or bounce message) is sent to the original sender of the message.

[https://technet.microsoft.com/en-us/library/aa995744\(v=exchg.160\).aspx](https://technet.microsoft.com/en-us/library/aa995744(v=exchg.160).aspx)

#### QUESTION 61

You have an Exchange Server 2016 organization. The organization contains one Edge Transport server.

A user reports that certain email messages expected from a specific recipient were never received.

You need to search for messages that were blocked by the Edge Transport because they contain attachment types that are blocked by the organization.

In which folder should you search?

- A. QueueViewer
- B. AgentLog
- C. Connectivity
- D. Routing
- E. ProtocolLog

**Correct Answer:** E

**Section:** [none]

**Explanation**

**Explanation/Reference:**

<http://exchangeserverpro.com/exchange-server-protocol-logging/>

#### **QUESTION 62**

You are planning an Exchange Server 2016 organization. The organization will contain a Mailbox server named EX01.

Users will have primary SMTP email addresses in the following domains:

- Contoso.com
- Fabrikam.com
- Cohowinery.com ▪
- Wingtiptoy.com

You need to add a DNS record to provide Autodiscover for each domain.

Which type of record should you create in each zone?

- A. SRV
- B. CERT
- C. PTR
- D. MINFO

**Correct Answer:** A

**Section:** [none]

**Explanation**

**Explanation/Reference:**

<https://supertekboy.com/2016/05/17/using-srv-records-for-autodiscover/>

**QUESTION 63**

You have an Exchange Server 2016 organization and Microsoft Office 365 subscription configured in a hybrid deployment.

You need to ensure that any email messages sent to the contoso.com domain are encrypted by using Office 365 Message Encryption.

Which three commands should you use? Each correct answer presents part of the solution.

- A. New-MessageClassification
- B. New-TransportRule
- C. Set-IRMConfiguration
- D. New-OutlookProtectionRule
- E. Import-RMSTrustedPublishingDomain

**Correct Answer:** BCE

**Section:** [none]

**Explanation**

**Explanation/Reference:**

<http://www.msexchange.org/articles-tutorials/office-365/exchange-online/office-365-message-encryption-part1.html> <https://technet.microsoft.com/en-us/library/dn569289.aspx>

**QUESTION 64**

DRAG DROP

You have an Exchange Server 2016 organization.

Three users named User1, User2, and User3 work in the marketing department.

You need to configure security to meet the following requirements:

- User3 must be able to send messages as User1.
  - User3 must be able to send messages on behalf of User2. ▪
- User2 must only be allowed to edit the Calendar of User1.

Which cmdlets should you use? To answer, drag the appropriate cmdlets to the correct requirements. Each cmdlet may be used once, more than once, or not at all. You may need to drag the split bar between panes or scroll to view content.

**Select and Place:**

**Answer Area**

**Cmdlets**

Add-AdPermission

Add-MailboxFolderPermission

Add-MailboxPermission

Set-Mailbox

User3 must be able to send messages  
as User1:

Cmdlet

User3 must be able to send messages  
on behalf of User2:

Cmdlet

User2 must only be allowed to edit the  
Calendar of User1:

Cmdlet

**Correct Answer:**

### Answer Area

#### Cmdlets

Add-MailboxPermission

User3 must be able to send messages  
as User1:

Add-AdPermission

User3 must be able to send messages  
on behalf of User2:

Set-Mailbox

User2 must only be allowed to edit the  
Calendar of User1:

Add-MailboxFolderPermission

Section: [none]

Explanation

Explanation/Reference: