

70-473

Number: 70-473
Passing Score: 800
Time Limit: 120 min
File Version: 1.0



VCE to PDF Converter : <https://vceplus.com/vce-to-pdf/>

Facebook: <https://www.facebook.com/VCE.For.All.VN/>

Twitter : https://twitter.com/VCE_Plus

Google+ : <https://plus.google.com/+Vcepluscom>

LinkedIn : <https://www.linkedin.com/company/vceplus>

<https://vceplus.com/>

Exam code: 70-473

Designing and Implementing Cloud Data Platform Solutions

Version 1.0

Sections

1. Operations Manager

Testlet 1

Topic 13, Mixed Questions A

QUESTION 1

Your company deploys System Center 2012 R2 Operations Manager.

A network administrator deploys the Operations Manager agent to all of the internal servers that run Windows Server, and then configures notifications to be sent by email to several departmental groups.

Two days later, a network administrator opens the Operations Manager console and discovers hundreds of alerts.

The administrator closes all of the alerts in the console.

You need to change the resolution state of the alerts that were closed.

What should you do first?

- A. From the Reporting workspace, select Microsoft Generic Report Library, and then select Alerts.
- B. From the Authoring workspace, select Rules, and then set the scope to View all targets.
- C. From the My Workspace workspace, create a new alert view.
- D. From the Administration workspace, create a notification subscription.

Correct Answer: C

Section: [none]

Explanation

Explanation/Reference:

QUESTION 2

Your company has a private cloud that contains a System Center 2012 R2 infrastructure. You run applications virtually by using Hyper-V hosts. Each application has a dedicated virtual machine on a Hyper-V host.

The Microsoft Monitoring Agent is deployed to all physical servers. Currently, all of the physical servers are monitored for memory, CPU, and disk space use.

You need to monitor the memory, CPU, and disk space use of each application server.

What should you do?



<https://vceplus.com/>

- A. Deploy the Microsoft Monitoring Agent to each virtual machine.
- B. Configure a new notification subscription for each Hyper-V host.
- C. Deploy the Configuration Manager client to each virtual machine.
- D. Configure a new channel for each virtual machine.

Correct Answer: A

Section: [none]

Explanation

Explanation/Reference:



QUESTION 3

Your network contains an Active Directory domain named contoso.com. The domain contains a domain controller named DC1 and member servers named Server1 and Server2. Server1 has System Center 2012 R2 Operations Manager installed. Server2 has System Center 2012 R2 Orchestrator installed. Orchestrator has the System Center Integration Pack for System Center 2012 R2 Operations Manager installed.

In Operations Manager, you have a monitor named Monitor1 that triggers an alert named Alert1. You need to ensure that when Alert1 is triggered, a custom runbook starts.

Which two actions should you perform from Orchestrator? Each correct answer presents part of the solution.

- A. Configure a filter of PrincipalName equals Alert1.
- B. Configure a filter of MonitorObjectName equals Monitor1.
- C. Add the Get Alert activity.
- D. Add the Monitor Alert activity and configure triggers for the alert.
- E. Configure a filter of Name equals Alert1.

Correct Answer: BD

Section: [none]

Explanation

Explanation/Reference:

QUESTION 4

Your company has a private cloud that is managed by using a System Center 2012 Operations Manager infrastructure.

The network contains several routers and switches.

You open the Network Devices view and discover that a switch is in a critical state.

You need to identify the availability of the switch during the past seven days. The solution must also ensure that you can review which servers are connected to the switch.

What should you use?

- A. The Network Node Dashboard
- B. A diagram view
- C. The Network Vicinity Dashboard
- D. A state view



Correct Answer: A

Section: [none]

Explanation

Explanation/Reference:

QUESTION 5

Your company has a private cloud that is managed by using a System Center 2012 Orchestrator, System Center 2012 Operations Manager, and System Center 2012 Service Manager infrastructure.

You discover that a service on a server repeatedly stops.

You need to configure a solution to remediate the recurring issue automatically.

What should you do?

- A. From Service Manager, configure an incident event workflow.

- B. From Operations Manager, create a monitor.
- C. From Service Manager, create an incident template.
- D. From Operations Manager, configure the CI connector.

Correct Answer: B

Section: [none]

Explanation

Explanation/Reference:

QUESTION 6

Your company has a datacenter in Los Angeles.

The datacenter contains a private cloud that is managed by using a System Center 2012 infrastructure.

A server named VMM1 hosts the System Center 2012 Service Manager management server. A server named Server2 hosts the System Center 2012 Orchestrator management server.

You plan to use a runbook named Book1 to update the status of Service Manager incidents.

You need to ensure that you can create Book1, and then reference the runbook in Service Manager.

What should you do? (Each correct answer presents part of the solution. Choose all that apply.)

- A. From the Service Manager Console, add an incident event workflow.
- B. From the Service Manager Shell, run the Set-SCDWJobSchedulecmdlet.
- C. From the Orchestrator Deployment Manager, register the Integration Pack for System Center Service Manager.
- D. From the Service Manager Console, create an Orchestrator connector.
- E. From the System Center 2012 Orchestrator Runbook designer, create a connection.
- F. From the Service Manager Shell, run the Enable-SCDWJobSchedulecmdlet.

Correct Answer: CDE

Section: [none]

Explanation

Explanation/Reference:

Explanation:

Install the integration pack for SCSM on Orchestrator and configure the connection settings (SCSM server name, User, Password)

Create a new runbook

First activity -> "Monitor Object" of SCSM integration pack -> Incident Class -> On Update -> Filter "Support Group" not equal "Tier 1"

Add 6 "Send Email" activities -> 6 different recipients -> add the text in each mail body Link all 6 "Send Email" activities with the first "Monitor Object" activity On each link delete the default rule "On success"

Add a new criteria -> Choose the "Support Group" from the data bus -> criteria of the first link "Support Group" equals "Tier 2"

Do the same with the other Links and Support Groups.

Check in and start the runbook <http://social.technet.microsoft.com/Forums/en/administration/thread/ea41a3a4-0b40-47ee-9ecc-a2ecab8794bf>

To create an Orchestrator connector

In the Service Manager console, click Administration. In the Administration pane, expand Administration, and then click Connectors. In the Tasks pane, under Connectors, click Create Connector, and then click Orchestrator connector.

Perform these steps to complete the Orchestrator Connector Wizard:

On the Before You Begin page, click Next.

On the General page, in the Name box, type a name for the new connector. Make sure that Enable this connector is selected, and then click Next. On the Connection page, in the Server Information area, type the URL of the Orchestrator Web service, depending on which version of Orchestrator you are using: For Orchestrator Beta, type the URL of the Orchestrator Web service in the form of <http://<computer>:<port>/Orchestrator.svc>, where <computer> is the name of the computer hosting the web service and <port> is the

port number where the web service is installed. (The default port number is 81.) For Orchestrator RC, type the URL of the Orchestrator Web service in the form of <http://<computer>:<port>/Orchestrator2012/Orchestrator.svc>, where <computer> is the name of the computer hosting the web service and <port> is the port number where the web service is installed. (The default port number is 81.)

On the Connection page, in the Credentials area, either select an existing account or click New, and then do the following:

In the Run As Account dialog box, in the Display name box, type a name for the Run As account. In the Account list, select Windows Account. Enter the credentials for an account that has rights to connect Orchestrator, and then click OK. On the Connection page, click Test Connection.

Note

Special characters (such as the ampersand [&]) in the User Name box are not supported. In the Test Connection dialog box, make sure that the message "The connection to the server was successful" appears, and then click OK. On the Connection page, click Next.

On the Folder page, select a folder, and then click Next. On the Web Console URL page, type the URL for the Orchestrator web console in the form of <http://<computer>:port> (the default port number is 82), and then click Next. On the Summary page, make sure that the settings are correct, and then click Create. On the Completion page, make sure that you receive the message "Orchestrator connector successfully created," and then click Close.

To validate the creation of an Orchestrator connector In the Connectors pane, locate the Orchestrator connector that you created. Review the Status column for a status of Finished Success.

Note

Allow sufficient time for the import process to finish if you are importing a large number of runbooks.

In the Service Manager console, click Library.

In the Library pane, expand Library, and then click Runbooks. Review the Runbooks pane, and note that your runbooks have been imported. <http://technet.microsoft.com/en-us/library/hh519779.aspx> The Integration Pack for System Center Service Manager is an add-in for Opalis Integration Server 6.3 that enables you to use System Center Service Manager to coordinate and use operational data in an existing IT environment comprised of service desk systems, configuration management systems,, and event monitoring systems,, including specifically BMC Remedy IT Service Management Suite, BMC Atrium, and HP Service Manager 7 and HP Service Center 6.2.

With this integration pack, you can also create workflows that interact with and transfer information to the integration packs for System Center Operations Manager, System Center Data Protection Manager, System Center Configuration Manager, and System Center Virtual Machine Manager.

Opalis, a Microsoft Subsidiary, is committed to helping you protect your privacy, while delivering software that brings you the performance, power, and convenience you want. For more information, see the Opalis 6.3

Privacy Statement (<http://go.microsoft.com/fwlink/?LinkID=202690>). <http://technet.microsoft.com/en-us/library/gg464964.aspx>

QUESTION 7

You have a System Center 2012 R2 infrastructure that has Orchestrator and Service Manager installed.

Integration between Orchestrator and Service Manager is configured.

You need to ensure that when a change request is made in Service Manager, the following requirements are met:

- The ticket number is logged to a file.
- The file contains the ticket numbers for every change request.
- Each time a ticket number is logged to the file, an email message is sent to an administrator.

Which activities should you use in a runbook?

- A. Monitor Object, Insert Line, and Send Email
- B. Get Activity, Append Line, and Send Email
- C. Monitor State, Insert Line, and Send Email
- D. Monitor Object, Append Line, and Send Email

Correct Answer: D

Section: [none]

Explanation

Explanation/Reference:

QUESTION 8

Your company has a datacenter in Los Angeles that contains a private cloud. The private cloud contains a System Center 2012 infrastructure.

The System Center 2012 infrastructure contains the following:

- Service Manager
- Orchestrator
- Operations Manager

You plan to configure the private cloud to meet the following requirements:

- Integrate runbooks to Service Manager requests.
- Automate administration tasks by using runbooks.
- Provide end users with the ability to perform administrative tasks.

You need to configure the private cloud to meet the requirements.

What should you do from Service Manager?

- A. Register a data source.
- B. Register the Orchestrator Integration Packs.
- C. Create a channel.
- D. Select the sync folder for the Orchestrator connector.

Correct Answer: B



<https://vceplus.com/>

Section: [none]

Explanation

Explanation/Reference:

QUESTION 9

Your company has a main office and 10 branch offices. The network contains an Active Directory forest named contoso.com. Each office contains domain controllers.

You have a System Center 2012 R2 infrastructure that has Operations Manager and Service Manager installed.

Each office has multiple VLANs. All switches are managed switches.

Users in the branch offices occasionally call the help desk to report that they cannot access some of the network resources in the main office.

You need to ensure that all of the ports on the switches can be monitored by using Operations Manager.

What is the best configuration to achieve the goal? More than one answer choice may achieve the goal. Select the BEST answer.

- A. A recursive discovery for the network devices by using ICMP
- B. An explicit discovery for the network devices by using ICMP
- C. A recursive discovery for the network devices by using SNMP
- D. An explicit discovery for the network devices by using SNMP

Correct Answer: D

Section: [none]

Explanation

Explanation/Reference:

QUESTION 10

Your company has a private cloud that is managed by using a System Center 2012 Operations Manager infrastructure.

From Operations Manager, you create a group named Group1.

You add multiple servers to Group1.

You have an Active Directory group named Group2.

You configure a dashboard for the users in Group2 to manage the client computers in Group1.

You need to ensure that the users in Group2 can achieve the following tasks:

- View open critical alerts generated by Group1. ▪

Identify whether a monitor generated an alert.

Which object should you add to the dashboard?

- A. An alert view
- B. A state view
- C. An alert widget
- D. An event view
- E. A state widget

Correct Answer: C

Section: [none]

Explanation

Explanation/Reference:



QUESTION 11

Your company has a private cloud that is managed by using a System Center 2012 infrastructure. The company defines the Service Level Agreement (SLA) for a web application as 99 percent uptime.

You need to create service level objectives (SLOs) that meet the SLA requirement.

Which object or objects should you create from the Service Manager Console? (Each correct answer presents part of the solution. Choose all that apply.)

- A. a queue
- B. a connector
- C. a channel
- D. a calendar
- E. a metric
- F. a subscription

Correct Answer: ADE

Section: [none]

Explanation

Explanation/Reference:

Explanation:

In SCSM 2012 the Service Level Management offers a great opportunity to implement SLAs for different IT management processes.

With the four components of SLA management you can build your own complex SLAs:

Queues -> Which work items are covered in the SLA

Calendar -> The service hours of an SLA

Metrics -> What is measured in the SLA Service Level Objective -> Target of the SLA

<http://blogs.technet.com/b/servicemanager/archive/2012/01/25/scsm-2012-service-level-management.aspx>

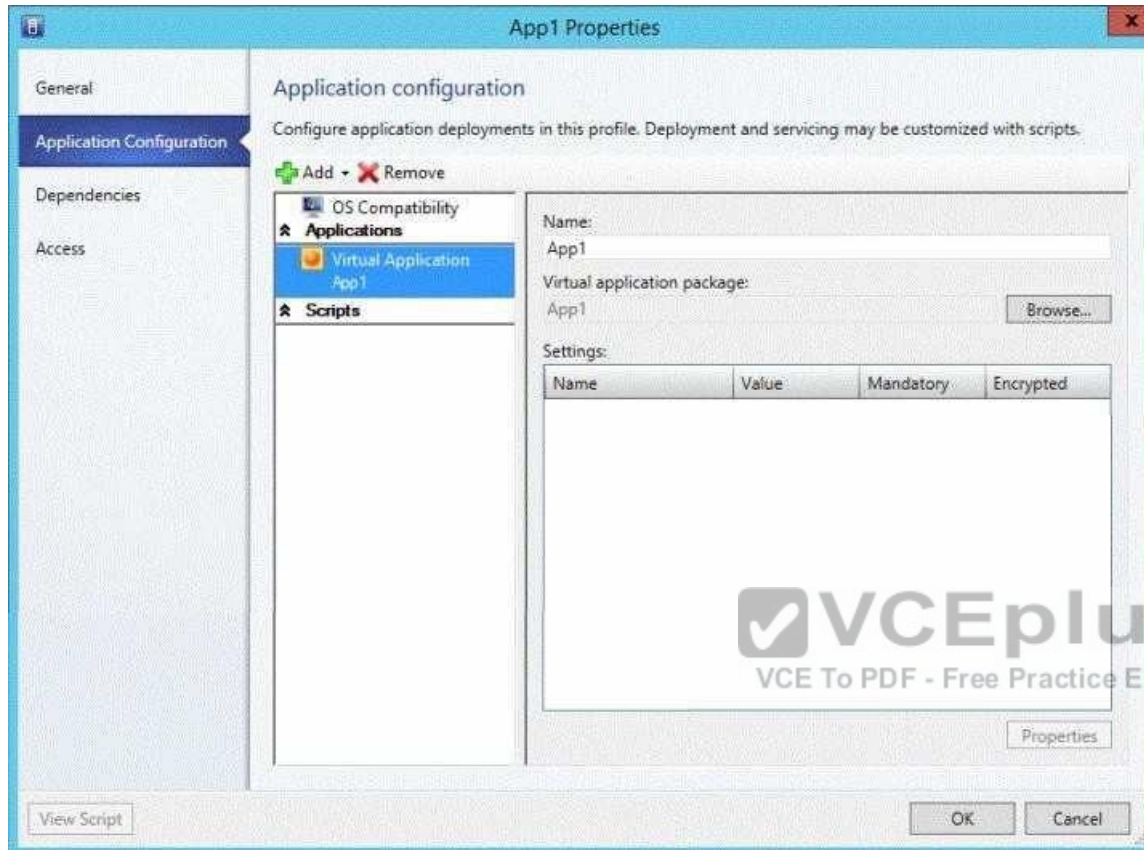
QUESTION 12

Your company deploys System Center 2012 R2 Virtual Machine Manager (VMM).

You plan to perform a new server deployment. The new server deployment will include a custom application named App1.

You use Server Application Virtualization (Server App-V) to virtualize App1. You create an application profile. You create a service deployment to deploy the App1 by using a Windows Server 2012 R2 template.

After deploying the service, you discover that App1 was not installed. You view the application profile as shown in the exhibit. (Click the Exhibit button.)



You need to ensure that App1 is installed when you deploy the service.

What should you add to the application profile?

- A. A Script Application that adds the Server App-V Agent
- B. A Script Application that adds the WebDeploy Agent
- C. A Script to Application that installs the Server App-V Agent
- D. A Script to Application that installs the WebDeploy Agent

Correct Answer: A

Section: [none]

Explanation

Explanation/Reference:

QUESTION 13

Your company has a private cloud that is managed by using a System Center 2012 Operations Manager infrastructure.

You have a distributed application named App1. App1 has the following service level objectives (SLOs):

- At least 99.9 percent uptime
- No more than 85 percent average CPU utilization

You need to add the SLOs that monitor the required information to Service Level Tracking.

Which SLO or SLOs should you add? (Each correct answer presents part of the solution. Choose all that apply.)

- A. Monitor state SLO - Availability
- B. Monitor state SLO - Security
- C. Collection rule SLO
- D. Monitor state SLO - Performance
- E. Monitor state SLO - Configuration



Correct Answer: AC

Section: [none]

Explanation

Explanation/Reference:

Explanation: <http://technet.microsoft.com/en-us/library/hh230719.aspx>

To define a service level objective for an application Open the Operations console with an account that is a member of the Operations Manager Administrators user role.

Click Authoring.

In the navigation pane, expand Management Pack Objects, and then click Service Level Tracking.

In the Tasks pane, click Create.

In the Service Level Tracking dialog box, type a name for the service level that you are defining. For example, type LOB Application 1. Optionally, you can provide a description. Click Next. On the Objects to Track page, under Targeted class, click Select.

In the Select a Target Class dialog box, select a class for the service level, such as Distributed Application, from the list in the text box. You can search for a class by typing its name into the Look For text box. Click OK to close the Select a Target dialog box. You can use the Scope option to specify the scope for the service level. The default selection is to use all objects of the targeted class.

Select the management pack that this service level will be saved in. You can use an existing management pack or create a new one.
Click Next.

On the Service Level Objectives page, click Add, and then click Monitor state SLO to create a new monitor.

This monitor will track the availability of the application.

Define the state monitor as follows:

In the Service level objective name text box, type a name for the service level objective. For this scenario, type Availability.

From the Monitor drop-down list, choose the specific monitor that you want to use to measure the objective. For this scenario, choose Availability. Using the Service level objective goal (%) spin box, provide the numerical measure for your objective. For example, select 99.990 to indicate that your goal is 99.99% availability. You can refine what the monitor tracks to determine availability by selecting or clearing any of the following state criteria:

Unplanned maintenance
Unmonitored
Monitoring unavailable
Monitor disabled
Planned maintenance
Warning
Click OK.



On the Service Level Objectives page, click Add, and then click Collection rule SLO to create a new collection rule. This rule will track the performance of the application. Define the performance collection rule as follows:

In the Service level objective name: text box, type a name for the service level objective. For this scenario, type Performance.

Under Targeted class, click Select to open the Select a Target Class dialog box. Specify the target class for the rule from the list of targets in the text box. Note that this class must be contained in the distributed application.

For this scenario, select the specific class the rule is targeted to, such as Windows Server 2008 Operating System.

Under Performance collection rule, click Select to open the Select a Rule dialog box. Specify the performance collection rule to use. For this scenario, choose Collect Processor\ % Processor Time performance counter, and then click OK. Using one of the Aggregation method options, choose one of the following:

Average
Min

Max

Use the Service level objective goal drop-down list to specify either Less than or More than, and enter a value in the adjacent text box. For this scenario, choose Less Than and 80. This indicates that the performance goal is to never exceed 80% processor time.

Click OK.

On the Service Level Objectives page, click Next.

On the Summary page, review the settings, and then click Finish.

When the Completion page appears, click Close.

QUESTION 14

Your company has a private cloud that is managed by using a System Center 2012 infrastructure. The network contains an Operations Manager infrastructure and a Virtual Machine Manager (VMM) infrastructure.

You implement a Microsoft SharePoint Server 2010 farm that is hosted on 10 virtual machines.

The company defines a service level agreement (SLA) for the farm's availability of at least 99.9 percent uptime.

You need to ensure that the company's compliance officer can identify whether the SLA requirement is met.

What should you do?

- A. Create a group, and then add all of the farm servers to the group. Create a Service Level Tracking object.
Add a service level objective (SLO), and then set the goal to 99.9 percent.
- B. Create a group, and then add all of the farm servers to the group.
Create a performance collection rule for each front-end Web server in the farm.
Configure an alert if network availability falls below 99.9 percent.
- C. Create a distributed application that contains the servers and the services used by the farm.
Create a Service Level Tracking object for the distributed application.
Add a service level objective (SLO), and then set the goal to 99.9 percent.
- D. Create a distributed application that contains the servers and the services used by the farm.
Create a performance collection rule for each front-end Web server in the farm.
Configure an alert if network availability falls below 99.9 percent.

Correct Answer: C

Section: [none]

Explanation

Explanation/Reference:

QUESTION 15

Your company has a private cloud that contains a System Center 2012 Service Manager infrastructure.

You need to create a service level objective (SLO) for incidents that have a priority value of 1.

What should you create first?

- A. A service offering
- B. A service template
- C. A subscription
- D. A queue

Correct Answer: D

Section: [none]

Explanation

Explanation/Reference:

QUESTION 16

Your company has a private cloud that contains a System Center 2012 Service Manager instance. Service Manager has the Self-Service Portal installed.

You create a service offering that contains a single request offering. The service offering provides logged-on users with the ability to add their user account automatically to a group named Group1.

You need to ensure that all requests for group membership changes require approval from the security department.

What should you modify?

- A. The service request template
- B. The request offering
- C. The service offering
- D. The Service Offering Category list



<https://vceplus.com/>

Correct Answer: A

Section: [none]

Explanation

Explanation/Reference:

QUESTION 17

Your company has a private cloud that contains a System Center 2012 infrastructure. The network contains a Service Manager infrastructure and an Orchestrator infrastructure.

You plan to configure the private cloud to meet the following requirements:

- Integrate runbooks to Service Manager requests.
- Automate administration tasks by using runbooks.
- Provide end users with the ability to perform administrative tasks.

You need to configure the private cloud to meet the requirements.

What should you do from Service Manager?

- A. Register the Orchestrator Integration Packs.
- B. Select the sync folder for the Orchestrator connector.
- C. Create an Exception Management Workflow.
- D. Register a data source.



Correct Answer: A

Section: [none]

Explanation

Explanation/Reference:

QUESTION 18

You have a System Center 2012 Operations Manager infrastructure.

You have a line-of-business web application named App1. App1 stores its information in a dedicated Microsoft SQL Server database.

Your company defines a service level agreement (SLA) for App1 of at least 98 percent uptime. You need to implement a solution that measures the availability of App1.

You create a distributed application for App1.

What should you create next?

- A. A monitor
- B. A Collection rule SLO
- C. A rule
- D. A Monitor state SLO

Correct Answer: D

Section: [none]

Explanation

Explanation/Reference:

QUESTION 19

Your company has a private cloud that contains a System Center 2012 Service Manager infrastructure.

You need to create a service level objective (SLO) for incidents that have a priority value of 1.

What should you create first?

- A. A rule
- B. A service template
- C. A queue
- D. A channel

Correct Answer: C

Section: [none]

Explanation

Explanation/Reference:

QUESTION 20

You deploy a System Center 2012 R2 infrastructure that contains Configuration Manager, Orchestrator, Operations Manager, Service Manager, and Virtual Machine Manager (VMM). Operations Manager is configured to monitor all servers. Configuration Manager is configured to deploy Windows patches to the servers.

You deploy 10 new web servers by using a VMM service template.

You plan to deploy several hundred patches to the servers.

You need to automate the server patching process without generating alerts.

What is the best approach to achieve the goal? More than one answer choice may achieve the goal. Select the BEST answer.

- A. From VMM, create an update baseline and configure the scope of the update baseline.
- B. From Orchestrator, create a scheduled runbook that contains an activity to deploy the updates and to set the maintenance mode.
- C. From Configuration Manager, create a software update deployment. From Operations Manager, set the servers to maintenance mode.
- D. From Configuration Manager, create an automatic deployment rule.

Correct Answer: B

Section: [none]

Explanation

Explanation/Reference:



QUESTION 21

Your company has a private cloud that is managed by using a System Center 2012 infrastructure. The network contains seven servers. The servers are configured as shown in the following table.

Server name	Server role
Server1	Virtual Machine Manager (VMM) management server
Server2	Virtualization host
Server3	Virtualization host
Server4	Virtualization host
Server5	Configuration Manager site server
Server6	Configuration Manager software update point
Server7	File server

You need to recommend a solution to apply Windows updates to the virtualization hosts.

The solution must meet the following requirements:

- Approve Windows updates from the VMM Administrator Console.
- Store information about Windows update installations in Configuration Manager reports.

What should you do first?

- A. From the VMM Administrator Console, add Server6 as a host server, and then install the Configuration Manager agent on Server1.
- B. On Server7, install Windows Server Update Services (WSUS), and then install the Configuration Manager agent on Server1.
- C. On Server7, install Windows Server Update Services (WSUS), and then install the Configuration Manager agent on all of the virtualization hosts.
- D. From the VMM Administrator Console, add Server6 as an update server, and then install the Configuration Manager agent on all of the virtualization hosts.

Correct Answer: D

Section: [none]

Explanation

Explanation/Reference:

QUESTION 22

Your company has a private cloud that is managed by using a System Center 2012 infrastructure. You plan to monitor a Microsoft .NET application named App1 that is hosted in the private cloud. You need to import the management packs required to monitor the application.

Which management packs should you import?

- A. The Windows Server Operating System management pack and the Windows Server 2008 Internet Information Services Management Pack
- B. The Windows Server 2008 Operating System (Discovery) management pack and the Windows Server 2008 Internet Information Services Management Pack
- C. The Windows Server 2008 Operating System (Monitoring) management pack and the Operations Manager APM Web IIS 7 management pack
- D. The Windows Server Internet Information Services 7 Management Pack and the Operations Manager APM Web IIS 7 management pack

Correct Answer: D

Section: [none]

Explanation

Explanation/Reference:

QUESTION 23

Your company has a private cloud that contains a System Center 2012 R2 infrastructure. You have a management server named Server1 that has Operations Manager installed.

You have a management server named Server2 that has Virtual Machine Manager (VMM) installed.

You need to monitor network devices by using Operations Manager.

The solution must meet the following requirements:

- Only provide the health status of devices located on physical networks.
 - Only include devices that are one hop away from a managed host. ▪
- Only include devices that are part of the private cloud.

What should you use?

- A. The Fabric Health Dashboard
- B. The Microsoft System Center Advisor (SCA)
- C. The Network Vicinity Dashboard
- D. The Application Summary Dashboard

Correct Answer: A

Section: [none]

Explanation

Explanation/Reference:

QUESTION 24

Your company has a private cloud that is managed by using a System Center 2012 Operations Manager infrastructure.

The network contains two servers named Server1 and Server2 that run Windows Server 2008 R2. The private cloud contains two servers. The servers are configured as shown in the following table.

Server name	Configuration	Network segment name
Server1	Audit Collection Services (ACS) collector	Network1
Server2	Audit Collection Services (ACS) forwarder	Network2

The network segments are separated by a firewall. All of the TCP ports from 1 to 1024 are allowed on the firewall.

You need to ensure that Server2 can send security events to Server1.

What should you do?



<https://vceplus.com/>

- A. From the firewall, allow TCP 5723 from Network2 to Network1.
- B. Deploy an Operations Manager gateway server.
- C. From the firewall, allow TCP 51909 from Network2 to Network1.
- D. From the firewall, allow TCP 51909 from Network1 to Network2.
- E. Deploy an SMTP smart host.
- F. From the firewall, allow TCP 5723 from Network1 to Network2.

Correct Answer: C

Section: [none]

Explanation

Explanation/Reference:



QUESTION 25

Your company has a private cloud that contains two Active Directory forests named contoso.com and adatum.com. The contoso.com network and the adatum.com network are separated by a firewall.

No trusts exist between the forests.

You deploy System Center 2012 Operations Manager to adatum.com.

You install agents on 100 servers in both forests.

You need to ensure that you can monitor all 100 servers. The solution must minimize the traffic between the two networks.

What should you install? (Each correct answer presents part of the solution. Choose all that apply.)

- A. A server certificate on the gateway server in contoso.com

- B. A gateway server in adatum.com
- C. A server certificate on the gateway server in adatum.com
- D. Client certificates on all of the servers in adatum.com
- E. A gateway server in contoso.com
- F. A server certificate on the management server in adatum.com
- G. Client certificates on all of the servers in contoso.com

Correct Answer: AEF

Section: [none]

Explanation

Explanation/Reference:

QUESTION 26

Your company has a private cloud that is managed by using a System Center 2012 Operations Manager infrastructure.

The Operations Manager management server role is installed on a server named Server1.

You deploy a server named Server2, and then join Server2 to the domain.

You log on to Server2 and install the Operations Manager agent. You specify Server1 as the management server.

You notice that Server1 did not discover Server2.

You need to add Server2 as an agent-managed device.

What should you do from the Operations Manager console?

- A. Modify the Global Management Server Settings - Security settings.
- B. Create a new discovery rule.
- C. Import the Windows Servers Base Operating System Management Pack.
- D. Run the Discovery Wizard - Computer and Device Management Wizard.

Correct Answer: A

Section: [none]

Explanation

Explanation/Reference:**QUESTION 27**

Your network contains an Active Directory domain named contoso.com that connects to a Windows Azure environment. You deploy System Center 2012 R2 Data Protection Manager (DPM) to the domain.

You need to ensure that you can use DPM to back up to the Windows Azure environment.

Which three actions should you perform? Each correct answer presents part of the solution.

- A. From Windows Azure, create an endpoint.
- B. On the DPM server, allow inbound traffic on TCP port 135.
- C. Install the Windows Azure Backup agent.
- D. Install a certificate on the DPM server and the upload the certificate to Windows Azure.
- E. Create a backup vault.

Correct Answer: CDE

Section: [none]

Explanation

Explanation/Reference:

**QUESTION 28**

Your company has a private cloud that is managed by using a System Center 2012 infrastructure. You deploy Data Protection Manager (DPM) to a server named DPM1.

A server named Server1 has the Hyper-V server role installed and hosts a virtual machine named VM1.

From DPM1, you perform a full backup of Server1.

You discover that you are unable to restore individual files from VM1.

You need to ensure that you can restore individual files from VM1 by using the DPM Administrator console.

What should you do first?

- A. On VM1, install Windows Server Backup.
- B. On DPM1, install the Hyper-V server role.

- C. On VM1, install the integration features.
- D. On DPM1, attach the VHD of VM1.

Correct Answer: B

Section: [none]

Explanation

Explanation/Reference:

Explanation: The integration features are also required but the "first" step according to the link below is to install the Hyper-V role on the DPM server.

Ref: <http://technet.microsoft.com/en-us/library/hh758184.aspx>

QUESTION 29

Your company has a private cloud that is managed by using a System Center 2012 infrastructure. The company defines the Service Level Agreement (SLA) for a web application as 99 percent uptime.

You need to create service level objectives (SLOs) that meet the SLA requirement.

Which object or objects should you create from the Service Manager Console? (Each correct answer presents part of the solution. Choose all that apply.)

- A. a queue
- B. a connector
- C. a channel
- D. a calendar
- E. a metric
- F. a subscription

Correct Answer: ADE

Section: [none]

Explanation

Explanation/Reference:

QUESTION 30

Your company has a private cloud that is managed by using a System Center 2012 infrastructure.

The network contains an Operations Manager infrastructure and a Service Manager infrastructure.

You need to configure Service Manager to create incidents automatically based on Operations Manager alerts.

Which object should you create from the Service Manager Console?

- A. A subscription
- B. A queue
- C. An incident event workflow
- D. A connector

Correct Answer: D

Section: [none]

Explanation

Explanation/Reference:

QUESTION 31

Your company has a private cloud that is managed by using a System Center 2012 infrastructure.

You have a web application named App1 that is hosted in another datacenter. The datacenter is not part of the private cloud.

You need to ensure that Service Manager incidents are generated automatically when App1 is unavailable.

What should you create?

- A. A channel
- B. A Service Level Tracking object
- C. A synthetic transaction
- D. An event subscription

Correct Answer: C

Section: [none]

Explanation

Explanation/Reference:

QUESTION 32

Your company has a private cloud that contains a System Center 2012 R2 infrastructure.

You have a server named Server1 that runs Windows Server 2012 R2. Server1 hosts a Java-based application. You need to ensure that you can monitor exceptions generated by the application.

Which three actions should you perform? Each correct answer presents part of the solution.

- A. Deploy the Java Application Performance Monitoring agent to Server1.
- B. Import the Management Pack for Java Application Performance Monitoring (APM).
- C. Deploy JavaBeans to Server1.
- D. Import the Management Pack for Java Enterprise Edition (JEE).
- E. Deploy JavaBeans to the Operations Manager server.

Correct Answer: ABD

Section: [none]

Explanation

Explanation/Reference:

QUESTION 33

Your network contains an Active Directory domain named contoso.com. The domain contains a domain controller named DC1 and a member server named Server1.

You have a server named Server2 that is a member of a workgroup. All servers run Windows Server 2012 R2.

Server1 has System Center 2012 R2 Operations Manager installed. DC1 is configured as an enterprise certification authority (CA). Server1 and DC1 are located on the internal network.

Server2 is located on a perimeter network.

You need to monitor Server2 by using Operations Manager.

Which three actions should you perform? Each correct answer presents part of the solution.



<https://vceplus.com/>

- A. Request and install a certificate on Server2, and then import the certificate to Server1.
- B. Run the Discovery Wizard on Server1.
- C. Open port UDP 161 and UDP 162 on the firewall between the internal network and the perimeter network.
- D. Open port TCP 5723 on the firewall between the internal network and the perimeter network.
- E. Manually install the Microsoft Monitoring Agent on Server2.
- F. Request and install a certificate on Server1, and then import the certificate to Server2.

Correct Answer: ADE

Section: [none]

Explanation

Explanation/Reference:

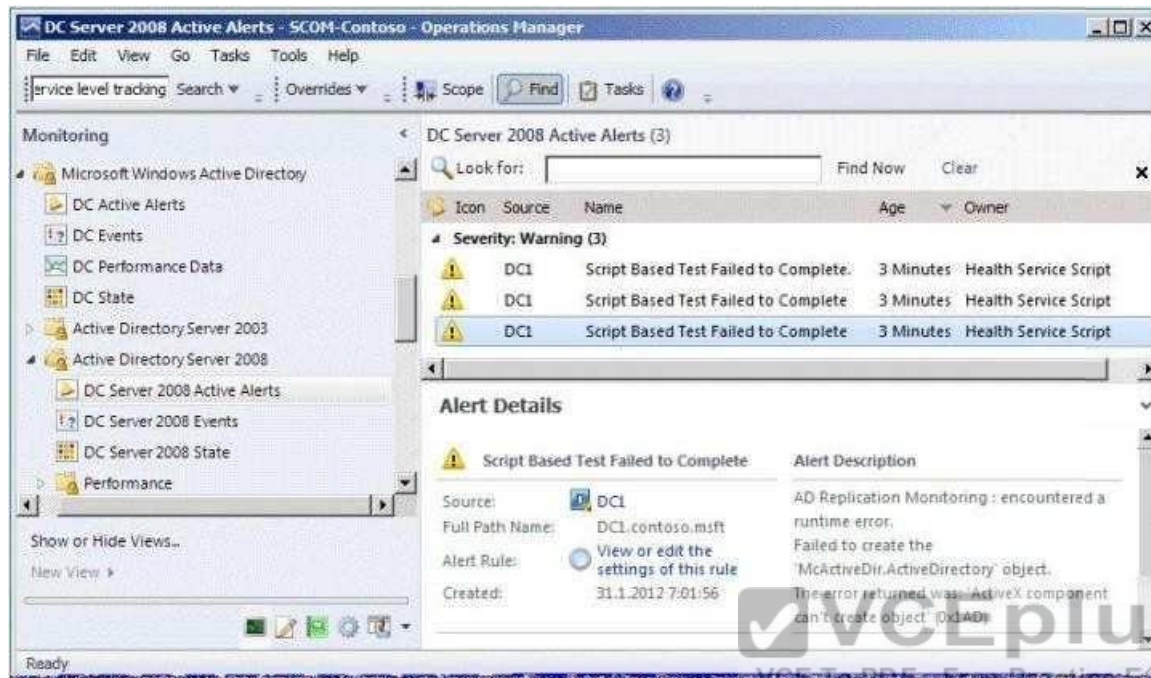
QUESTION 34

Your network contains an Active Directory domain named contoso.com. The domain contains a domain controller named DC1 and a server named Server1.

You install the management server role on Server1.

You install the Operations Manager agent on DC1.

You run the Operations Manager console and discover the active alerts shown in the exhibit.
(Click the Exhibit button.)



You need to resolve the active alerts.

What should you do?

- A. On DC1, install MOMADAdmin.exe.
- B. On Server1, install OomADs.msi.
- C. On Server1, install MOMADAdmin.exe.
- D. On DC1, install OomADs.msi.

Correct Answer: D

Section: [none]

Explanation

Explanation/Reference:

QUESTION 35

Your company has a private cloud that contains a System Center 2012 infrastructure.

The network contains a Service Manager infrastructure and a Configuration Manager infrastructure.

You create a configuration baseline for desired configuration management.

You need to ensure that an incident is created automatically in Service Manager when a device is non-compliant

You install the Configuration Manager connector for Service Manager.

What should you do next?

- A. Create an incident template.
- B. Import the Configuration Manager Management Packs.
- C. Create a Desired Configuration Management Event Workflow Configuration.
- D. Create a service level objective (SLO) for the desired configuration management incident.

Correct Answer: C

Section: [none]

Explanation

Explanation/Reference:

QUESTION 36

Your company has a private cloud that is managed by using a System Center 2012 infrastructure.

The private cloud contains 200 servers that run Windows Server 2008 R2. All of the servers are managed by Operations Manager.

The private cloud contains an application named App1 that is deployed on-demand to several servers. The servers that run the application are identified by a registry value set during the application's installation.

You create a monitor that targets all of the servers.

You need to modify the monitor to only affect the servers that have the application installed.

Which three actions should you perform in sequence? (To answer, move the appropriate actions from the list of actions to the answer area and arrange them in the correct order.) **Select**

and Place:

Actions		Answer Area
Create a profile.		
Create a group.		
Create an attribute.		
Create a task.		
Create an override.		
Create a Run As Account.		

Correct Answer:

Actions		Answer Area
Create a profile.		Create an attribute.
		Create a group.
		Create an override.
Create a task.		
Create a Run As Account.		

Section: [none]

Explanation

Explanation/Reference:

QUESTION 37

Your company has a private cloud that is managed by using a System Center 2012 Operations Manager infrastructure.

You need to ensure that members of a group named Group1 can resolve printing alerts by using the Operations Manager console. The solution must minimize the number of Operations Manager permissions assigned to Group1.

Which three actions should you perform in sequence? (To answer, move the appropriate actions from the list of actions to the answer area and arrange them in the correct order.)

Select and Place:

Actions	Answer Area
Create an event viewer alert.	
Import the Windows Server Print Server Management Pack.	
Create a Subscription.	
Scope the user role.	
Create a Run As account.	
Create an Operator user role.	

Correct Answer:

Actions	Answer Area
Create an event viewer alert.	Import the Windows Server Print Server Management Pack.
	Create an Operator user role.
Create a Subscription.	Scope the user role.
Create a Run As account.	

Section: [none]

Explanation

Explanation/Reference:

QUESTION 38

Your company has a private cloud that is managed by using a System Center 2012 Operations Manager infrastructure. The infrastructure contains a management server named Server 1. The network contains two subnets named Subnet1 and Subnet2. The two subnets are separated by a firewall that prevents SNMP communications.

Server1 is located on Subnet1. A switch named Switch1 is located on Subnet2.

Switch1 has the following configurations:

- Network ID: 172.23.1.0/23
- IPv4 address: 172.23.1.55
- IPv6 address: fec0:2308::12 You need to discover Switch1.

What should you configure from the Computer and Device Management Wizard? To answer, drag the appropriate values to the correct locations in the answer area. (Each value may be used once, more than once, or not at all.) **Select and Place:**

Values	Answer Area
ICMP	<div> <div> Add a Device </div> <div> Specify the settings for the network device you want to discover. </div> <div> Name or IP address: <div></div> </div> <div> Access mode: <div></div> </div> <div> Port number: <div>161</div> </div> <div> SNMP version: <div>v1 or v2</div> </div> <div> SNMP V1 or V2 Run As account: <div>Use selected default accounts</div> </div> <div> Add SNMP V1 or V2 Run As Account </div> <div> More about device settings </div> <div> OK Cancel </div> </div>

Correct Answer:

The screenshot shows a 'Values' list on the left with the following items: (empty), SNMP, ICMP and SNMP, (empty), 172.23.1.0/23, and Fec0:2308::12. The 'Answer Area' on the right displays the 'Add a Device' dialog box. The dialog box has the following fields and values:

- Name or IP address:** 172.23.1.55
- Access mode:** ICMP
- Port number:** 161
- SNMP version:** v1 or v2
- SNMP V1 or V2 Run As account:** Use selected default accounts

Buttons at the bottom include 'Add SNMP V1 or V2 Run As Account', 'More about device settings' (a link), 'OK', and 'Cancel'.

Section: [none]

Explanation

Explanation/Reference:

Section: Operations Manager

Explicit discovery – An explicit discovery rule will only attempt to discover those devices that you explicitly specify in the wizard by IP address or FQDN. It will only monitor those devices that it can successfully access.

The rule will attempt to access the device by using ICMP, SNMP, or both depending on the configuration of the rule. <http://technet.microsoft.com/en-us/library/hh212935.aspx>

QUESTION 39

Your network contains a System Center 2012 R2 Service Manager deployment. You plan to create priority-based service level objectives (SLOs) for all work item types. The priorities will be assigned automatically based on the urgency and the impact of a work item.

You need to identify how to implement the priorities for each work item.

What should you identify? In the table below, identify which work items can be implemented by using the work item settings or a custom workflow and which work items can be implemented only by using a custom workflow. Make only one selection in each row.

Hot Area:

Work item	Can be implemented by using the work item settings or a custom workflow	Can be implemented only by using a custom workflow
Activity	<input type="radio"/>	<input type="radio"/>
Change Request	<input type="radio"/>	<input type="radio"/>
Incident	<input type="radio"/>	<input type="radio"/>
Problem	<input type="radio"/>	<input type="radio"/>
Release	<input type="radio"/>	<input type="radio"/>
Service Request	<input type="radio"/>	<input type="radio"/>

Correct Answer:

Work item	Can be implemented by using the work item settings or a custom workflow	Can be implemented only by using a custom workflow
Activity	<input type="radio"/>	<input checked="" type="radio"/>
Change Request	<input type="radio"/>	<input checked="" type="radio"/>
Incident	<input checked="" type="radio"/>	<input type="radio"/>
Problem	<input checked="" type="radio"/>	<input type="radio"/>
Release	<input type="radio"/>	<input checked="" type="radio"/>
Service Request	<input type="radio"/>	<input checked="" type="radio"/>

Section: [none]

Explanation

Explanation/Reference:

QUESTION 40

Your company has a private cloud that contains a System Center 2012 R2 infrastructure. The infrastructure contains four servers. The servers are configured as shown in the following table.

Server name	Component
Server1	Configuration Manager
Server2	Operations Manager
Server3	Service Manager
Server4	Virtual Machine Manager (VMM)

You need to implement self-service provisioning of virtual machines. The solution must ensure that users can start virtual machines, create virtual machine templates, and create services. What should you do? To answer, select the appropriate options in the answer area.

Answer Area

Create a user role on:

Actions assigned to the user role:

Hot Area:

Answer Area

Create a user role on:

Server1
Server2
Server3
Server4

Actions assigned to the user role:

Author, Checkpoint, and Start
Author, Deploy, and Start
Checkpoint, Deploy, and Start

Correct Answer:

Answer Area

Create a user role on:

Server1
Server2
Server3
Server4

Actions assigned to the user role:

Author, Checkpoint, and Start
Author, Deploy, and Start
Checkpoint, Deploy, and Start

Section: [none]

Explanation

Explanation/Reference:

QUESTION 41

Your company has a private cloud that contains a System Center 2012 R2 infrastructure. You plan to use service level objectives (SLOs) to monitor the network resources. In the table below, identify which type of SLO should be used to achieve each SLO goal. Make only one selection in each row.

Hot Area:

SLO	Monitor state SLO	Collection rule SLO
Availability	<input type="radio"/>	<input type="radio"/>
Performance	<input type="radio"/>	<input type="radio"/>
Events	<input type="radio"/>	<input type="radio"/>
Security	<input type="radio"/>	<input type="radio"/>

Correct Answer:

SLO	Monitor state SLO	Collection rule SLO
Availability	<input checked="" type="radio"/>	<input type="radio"/>
Performance	<input type="radio"/>	<input checked="" type="radio"/>
Events	<input type="radio"/>	<input checked="" type="radio"/>
Security	<input type="radio"/>	<input checked="" type="radio"/>

Section: [none]

Explanation

Explanation/Reference:

QUESTION 42

Your company has a private cloud that contains a System Center 2012 infrastructure. Audit Collection Services (ACS) is enabled. A server named Server1 has Operations Manager installed.

You upgrade Operations Manager on Server1 and the ACS collector to System Center 2012 R2.

You need to ensure that agents that have been installed by using a push installation are upgraded.

The solution must ensure that ACS is enabled on the agents.

Which three actions should you perform in sequence? To answer, move the appropriate actions from the list of actions to the answer area and arrange them in the correct order.

Select and Place:

Actions	Answer Area
Approve the update for each agent.	
Begin the update process for each agent.	
Enable ACS on the agents.	
Run momagent.msi on each managed computer.	
Disable ACS on the agents.	

Correct Answer:

Actions	Answer Area
	Approve the update for each agent.
	Begin the update process for each agent.
	Enable ACS on the agents.
Run momagent.msi on each managed computer.	
Disable ACS on the agents.	

Section: [none]

Explanation

Explanation/Reference:

QUESTION 43

You have a System Center 2012 R2 infrastructure that has Operations Manager installed.
Your company is testing a custom application named App1. App1 is deployed to a test server named Server1. Server1 runs Windows Server 2012 R2.
You push the Operations Manager agent to Server1 and you start to receive alerts from Server1.

You need to give a team of developers historical traces of App1. The developers will store the traces in Team Foundation Server (TFS).
Which three actions should you perform in sequence? To answer, move the appropriate actions from the list of actions to the answer area and arrange them in the correct order.

Select and Place:

Actions	Answer Area
Configure an Alert Attachment discovery rule.	
Import the Alert Attachment Management Pack.	
Configure an IntelliTrace collection.	
Import the IntelliTrace Profiling Management Pack.	
Import the System Center Management Pack for Windows Server Operating System.	

Correct Answer:

Actions	Answer Area
Configure an Alert Attachment discovery rule.	Import the Alert Attachment Management Pack.
	Import the IntelliTrace Profiling Management Pack.
	Configure an IntelliTrace collection.
Import the System Center Management Pack for Windows Server Operating System.	

Section: [none]

Explanation

Explanation/Reference:



<https://vceplus.com/>

QUESTION 44

You have a System Center 2012 R2 infrastructure that contains three servers. The servers are configured as shown in the following table.

Server name	Component
Server1	Service Manager
Server2	Orchestrator
Server3	Virtual Machine Manager (VMM)



You need to create a self-service request offering that will allow users to provision new virtual machines.

On which server should you perform each of the following actions? To answer, select the appropriate server for each action in the answer area.

Answer Area

Create a connector.

Install the Virtual Machine Manager console.

Deploy the System Center Integration Pack for System Center 2012 R2 Virtual Machine Manager (VMM).

Hot Area:

Answer Area

Create a connector.

	▼
Server1	
Server2	
Server3	

Install the Virtual Machine Manager console.

	▼
Server1	
Server2	
Server3	

Deploy the System Center Integration Pack for System Center 2012 R2 Virtual Machine Manager (VMM).

	▼
Server1	
Server2	
Server3	

Correct Answer:

Answer Area

Create a connector.

	▼
Server1	
Server2	
Server3	

Install the Virtual Machine Manager console.

	▼
Server1	
Server2	
Server3	

Deploy the System Center Integration Pack for System Center 2012 R2 Virtual Machine Manager (VMM).

	▼
Server1	
Server2	
Server3	

Section: [none]

Explanation

Explanation/Reference:

QUESTION 45

You have a System Center 2012 Virtual Machine Manager (VMM) infrastructure that contains a server named VMM1.

A user named TestUser5 attempts to add a Hyper-V host named Host1 to the fabric. TestUser5 enters the IP address of Host1 and receives the following error message: "Access has been denied while contacting the server Host1." You verify that TestUser5 is assigned the Delegated Administrator User Role.

You need to ensure that TestUser5 can add Host1 to the fabric.

What should you do?

- A. Add TestUser5 to the Network Operators security group.
- B. Create a Run as Account that is a member of the local Administrators group on Host1.
- C. Assign the Administrator User Role to TestUser5.
- D. Modify the logon account for the System Center Virtual Machine Manager Agent service on VMM1.

Correct Answer: B

Section: [none]

Explanation

Explanation/Reference:



QUESTION 46

You have a System Center 2012 Service Manager infrastructure that contains a single server named SCSM1.

You plan to use a new account named Account1 as the Operational Database Account.

You plan to configure SCSM1 to use Account1 as the logon account for the System Center Data Access Service.

You need to identify which roles must be assigned to Account1.

Which two roles should you identify? (Each correct answer presents part of the solution. Choose two.)

- A. the Service Manager Administrators User Role Profile
- B. the Microsoft SQL Server db_ddladmin fixed database role
- C. the Service Manager Workflows User Role Profile
- D. the Service Manager Advanced Operators User Role Profile
- E. the Microsoft SQL Server configsvc_users database role
- F. the Microsoft SQL Server sdk_users database role

Correct Answer: AF

Section: [none]

Explanation

Explanation/Reference:

Explanation:

<http://technet.microsoft.com/en-us/library/hh495527.aspx> suggests that A, E and F are required (Service Manager Administrators User Role Profile, configsvc_users database role and sdk_users database role) but the question is asking for just two answers.

<http://technet.microsoft.com/en-us/library/hh495527.aspx> doesn't mention the configsvc_users database role as below so the answer is A and F.

System Center Configuration service and System Center Data Access service account:

This account is one set of credentials that is used to update and read information in the operational database. Operations Manager ensures that the credentials used for the System Center Data Access service and System Center Configuration service account are assigned to the sdk_user role in the operational database.

QUESTION 47

You deploy System Center 2012 R2 Operations Manager and import several management packs.

You need to modify the number of days that event data is stored in the database.

Which table should you modify in the Reporting data warehouse database?

- A. dbo.Dataset
- B. dbo.StandardDataSetAggregation
- C. Event. EventStage
- D. dbo.DatasetType

Correct Answer: B

Section: [none]

Explanation

Explanation/Reference:

QUESTION 48

Your network contains a System Center Service Manager 2010 Service Pack 1 (SP1) infrastructure that contains four servers.

The servers are configured as shown in the following table.

Server name	Server role
Server1	Management server
Server2	Data warehouse management server
Server3	Microsoft SQL Server Reporting Services
Server4	Microsoft SQL Server

You upgrade Server1 and Server2 to Service Manager 2012.

You need to ensure that Server2 can continue to deploy reports to Server3.

Which two tasks should you perform? (Each correct answer presents part of the solution. Choose two.)

- A. Copy the Microsoft.EnterpriseManagement.Reporting.Code.dll file to SSRS1.
- B. Modify the RSReportServer.config file on MGT1.
- C. Modify the RSReportServer.config file on SSRS1.
- D. Modify the RSSrvPolicy.config file on DATA1.
- E. Modify the RSSrvPolicy.config file on SQL1.
- F. Copy the Microsoft.EnterpriseManagement.Reporting.Code.dll file to SQL1.

Correct Answer: AC

Section: [none]

Explanation

Explanation/Reference:

Explanation:

Preparing the remote computer to host SSRS involves the following steps, which are covered in detail in this section:

- * (A) Copy Microsoft.EnterpriseManagement.Reporting.Code.dll from the Service Manager installation media to the computer that is hosting SSRS.
- * Add a code segment to the rssrvpolicy configuration file on the computer that is hosting SSRS.
- * (C) Add an Extension tag to the existing Data segment in the rsreportserver configuration file on the same computer.

Reference: Manual Steps to Configure the Remote SQL Server Reporting Services

URL: <http://technet.microsoft.com/en-us/library/hh519664>

QUESTION 49

Your network contains an Active Directory domain named contoso.com. The domain contains a domain controller named DC1 that runs Windows Server 2008 R2 Service Pack 1 (SP1). The forest functional level is Windows Server 2003.

The domain contains two member servers named Server1 and Server2. Server1 has Microsoft SQL Server 2008 installed. Both servers run Windows Server 2008 R2 SP1.

Your company plans to deploy System Center 2012 R2 Service Manager to Server2.

You need to ensure that you can install Service Manager on Server2.
What should you do?

- A. Upgrade the operating system on Server1.
- B. Raise the forest functional level.
- C. Upgrade the operating system on DC1.
- D. Upgrade SQL Server on Server1.
- E. Upgrade the operating system on Server2.

Correct Answer: D

Section: [none]

Explanation

Explanation/Reference:

QUESTION 50

You have a deployment of System Center 2012 R2 Virtual Machine Manager (VMM).

You need to configure a profile that installs the Web Server (IIS) server role during the deployment of a virtual machine.

Which profile should you configure?



<https://vceplus.com/>

- A. Guest OS
- B. Advanced Operator
- C. Capability
- D. Physical Computer

Correct Answer: A

Section: [none]

Explanation

Explanation/Reference:

QUESTION 51

Your company has a datacenter in Los Angeles.

The datacenter contains a System Center 2012 infrastructure that contains the following roles:

- Orchestrator
- Service Manager
- Virtual Machine Manager(VMM)



The company is evaluating an auditing policy.

You need to recommend a portal that must be used to ensure that the following tasks are audited:

- When an administrator updates a service
- When a user requests a change to a service
- When an administrator approves a change to a service

You need to recommend a solution that meets the requirements of the compliance policy. Which portal should you include in the recommendation?

- A. The Service Manager Self-Service Portal
- B. The Virtual Machine Manager Self-Service Portal (VMMSSP) 2.0
- C. The Virtual Machine Manager Self-Service Portal (VMMSSP)
- D. The App Controller portal

Correct Answer: A

Section: [none]

Explanation**Explanation/Reference:****QUESTION 52**

You have a deployment of System Center 2012 R2 Virtual Machine Manager (VMM).

You plan to use the Create Clustered File Server Wizard to create a cluster on two physical servers named Server1 and Server2. The new cluster will be named Cluster1 and will have a virtual IP (VIP) of 10.20.30.13.

When you attempt to deploy the new cluster, you receive the following error message in the job window: "Error (26568) The IP address 10.20.30.13 could not be allocated from any IP address pool."

You need to ensure that you can deploy the cluster.

What should you do?

- A. Create a new logical network IP pool and add the IP address to the new pool.
- B. Create a new VIP template profile.
- C. Add the IP address to the VIP section of the logical network IP pool.
- D. Create a DHCP reservation for the IP address.

Correct Answer: A

Section: [none]

Explanation**Explanation/Reference:****QUESTION 53**

You have a deployment of System Center 2012 R2 Virtual Machine Manager (VMM). The deployment contains three Hyper-V hosts named Server1, Server2, and Server3. All of the servers connect to a LUN named LUN1.

You need to disconnect Server1 from LUN1 without affecting the other Hyper-V hosts.

You write the following Windows PowerShell script:

```
01 $VAR1 = Get-SCVMHost -ComputerName "Server1"  
02 $VAR2 = Get-SCStorageLogicalUnit -Name "LUN1"  
03
```


Which command should you insert at line 03?

- A. Unregister-SCSTORAGElogicalUnit -STORAGE1logicalUnit \$VAR2 -VMHost \$VAR1
- B. Unregister-StorageSubSystem -ProviderName \$VAR2, \$VAR1
- C. Set-SCSTORAGE1logicalUnit -STORAGE1logicalUnit \$VAR2 -VMHost \$VAR1
- D. Remove-SCSTORAGE1logicalUnit -STORAGE1logicalUnit \$VAR1 -VMHost\$VAR2

Correct Answer: A

Section: [none]

Explanation

Explanation/Reference:

QUESTION 54

Your network contains a domain named adatum.com. The domain contains five virtualization servers. The servers are configured as shown in the following table.

Server name	Server role
Host1	Windows Server 2008 Service Pack 2 (SP2) Hyper-V server role
Host2	Microsoft Hyper-V Server 2008 R2
Host3	Microsoft Virtual Server 2005 R2
Host4	VMware ESX Server 2.5
Host5	VMware ESX Server 3.5

The network also contains a server named Server1 that runs VMware vCenter Server.

In the domain, you install System Center 2012 Virtual Machine Manager (VMM) on a server named VMM1. You configure VMM1 to manage Server1.

You need to ensure that you can add all of the servers to the VMM fabric.

Which two actions should you perform? (Each correct answer presents part of the solution. Choose two.)

- A. Install Hyper-V Server 2008 R2 Service Pack 1 (SP1) on Host3.
- B. Install Hyper-V Server 2008 R2 Service Pack 1 (SP1) on Host5.
- C. Install Hyper-V Server 2008 R2 Service Pack 1 (SP1) on Host4.

- D. Uninstall VMware vCenter from Server1.
- E. Upgrade Host1 to Hyper-V Server 2008 R2 Service Pack 1 (SP1).
- F. Upgrade Host2 to Hyper-V Server 2008 R2 Service Pack 1 (SP1).

Correct Answer: AC

Section: [none]

Explanation

Explanation/Reference:

QUESTION 55

Your company has a datacenter in Seattle.

The datacenter contains a private cloud that is managed by a server named VMM1. VMM1 has System Center 2012 Virtual Machine Manager (VMM) installed.

You add three Hyper-V hosts named Host1, Host2, and Host3 to the server fabric. The hosts are connected to a SAN named STORAGE1 by using Fiber Channel connections.

You need to optimize access to the LUNs in STORAGE1 from the hosts.

What should you do first?

- A. Configure the hosts to connect to STORAGE1 by using an iSCSI channel.
- B. Install the Multipath I/O (MPIO) feature on VMM1.
- C. Configure VMM1 to connect to STORAGE1 by using an iSCSI channel.
- D. Install the Multipath I/O (MPIO) feature on the hosts.

Correct Answer: D

Section: [none]

Explanation

Explanation/Reference:

QUESTION 56

Your network contains an Active Directory domain named contoso.com. The domain contains two member servers named Server1 and Server2 that run Windows Server 2012 R2. Server1 has System Center 2012 R2 Virtual Machine Manager (VMM) installed. Server2 has the IP Address Management (IPAM) feature installed. You need to ensure that address spaces created in VMM are visible in IPAM.

What should you do?

- A. From Windows PowerShell, run the Add-SCNetworkConnectioncmdlet.
- B. From the Virtual Machine Manager console, configure the System Center Settings.
- C. From Windows PowerShell, run the Add-SCNetworkServicecmdlet.
- D. From the Virtual Machine Manager console, create a service.

Correct Answer: C

Section: [none]

Explanation

Explanation/Reference:

Note:

In VMM, network services include gateways, virtual switch extensions, network managers (which include IPAM servers), and top-of-rack (TOR) switches

QUESTION 57

Your company has three datacenters located in New York, Los Angeles and Paris.

You deploy a System Center 2012 Virtual Machine Manager (VMM) infrastructure. The VMM infrastructure contains 2,000 virtual machines deployed on 200 HyperV hosts.

The network contains a server named DPM1 that has System Center 2012 Data Protection Manager (DPM) installed.

You need to recommend a solution for the infrastructure to meet the following requirements:

- Automatically backup and restore virtual machines by using workflows. ▪
- Automatically backup and restore system states by using workflows.

What should you include in the recommendation? (Each correct answer presents part of the solution. Choose two.)



<https://vceplus.com/>

- A. Deploy System Center 2012 Orchestrator.
- B. Install the Integration Pack for System Center Virtual Machine Manager (VMM).
- C. Install the Integration Pack for System Center Data Protection Manager (DPM).
- D. Deploy System Center 2012 Operations Manager.
- E. Deploy System Center 2012 Service Manager.

Correct Answer: AC

Section: [none]

Explanation

Explanation/Reference: Explanation:

<http://technet.microsoft.com/en-us/library/hh420337>

<http://technet.microsoft.com/en-us/library/hh830726.aspx>

QUESTION 58

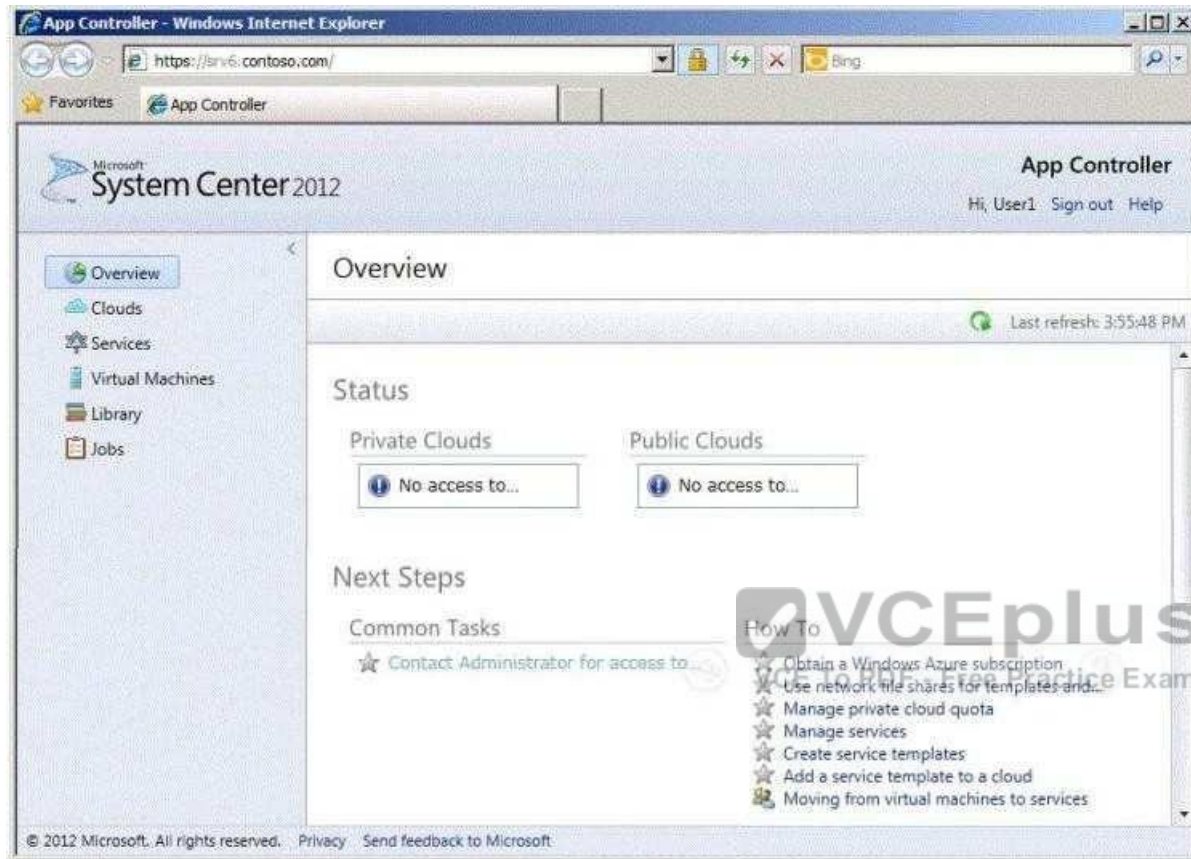
Your network contains servers that have System Center 2012 Virtual Machine Manager (VMM) installed and servers that have System Center 2012 App Controller installed.

You create a private cloud named Cloud1.

You add a VMM connection in App Controller.

You verify that you can connect to Cloud1 from the App Controller portal.

A user named User1 fails to connect to Cloud1 from the App Controller portal as shown in the exhibit. (Click the Exhibit button.)



You need to ensure that User1 can connect to Cloud1 from the App Controller portal.

What should you do?

- A. From the App Controller portal, modify the properties of the VMM connection.
- B. From the App Controller portal, create a User Role.
- C. From the VMM Administrator Console, modify the properties of Cloud1.
- D. From the VMM Administrator Console, create a User Role.

Correct Answer: D

Section: [none]

Explanation

Explanation/Reference:

Explanation:

You can create user roles in System Center 2012 Virtual Machine Manager (VMM) to define the objects that users can manage and the management operations that users can perform.

Reference: Creating User Roles in VMM

URL: <http://technet.microsoft.com/en-us/library/gg696971.aspx>

QUESTION 59

You are the datacenter administrator for a company named Contoso, Ltd.

The network contains a server that has System Center 2012 Virtual Machine Manager (VMM) installed.

You create four private clouds.

Developers at Contoso have two Windows Azure subscriptions.

Contoso creates a partnership with another company named A.Datum.

The A.Datum network contains a System Center 2012 Virtual Machine Manager (VMM) infrastructure that contains three clouds.

Developers at A.Datum have two Windows Azure subscriptions.

You deploy System Center 2012 App Controller at A.Datum.

You plan to manage the clouds and the Windows Azure subscriptions for both companies from the App Controller portal.

You need to identify the minimum number of subscriptions and the minimum number connections required for the planned management.

How many connections and subscriptions should you identify?

- A. Two connections and four subscriptions
- B. Two connections and two subscriptions
- C. Four connections and four subscriptions
- D. Eight connections and four subscriptions
- E. Four connections and two subscriptions

Correct Answer: A

Section: [none]

Explanation

Explanation/Reference:

Explanation:

"Contoso has four clouds."

Connecting to a private cloud means establishing a connection to a VMM 2012 Management Server. However, you can also add a Windows Azure subscription to App Controller. Before anyone can use App Controller, an administrator must configure it to communicate with VMM for private clouds, or Windows Azure for public cloud services. Connecting App Controller to VMM is straightforward.

Connecting (or subscribing) App Controller to an Azure subscription requires a little more work.

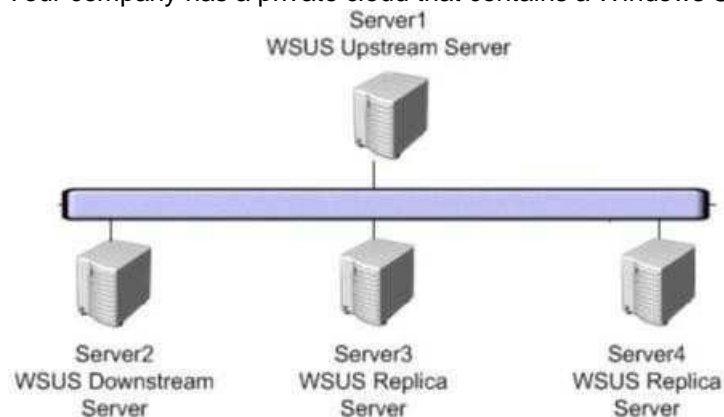
One of the coolest features of App Controller is its support for multiple connections and subscriptions. If for business reasons you implement different VMM deployments, you can connect App Controller to each deployment. Similarly, if you have multiple subscriptions to the Microsoft Azure service, you can add them to App Controller.

<http://blogs.technet.com/b/server-cloud/archive/2011/10/28/app-controller-enabling-application-self-service.aspx>

<http://www.windowsitpro.com/article/system-center/microsoft-system-center-app-controller-2012-142925> <http://technet.microsoft.com/en-us/library/gg696038>

QUESTION 60

Your company has a private cloud that contains a Windows Server Update Services (WSUS) infrastructure as shown in the exhibit. (Click the Exhibit button.)



You plan to add the WSUS infrastructure to the System Center 2012 Virtual Machine Manager (VMM) infrastructure. You need to identify which WSUS servers can be added to the VMM infrastructure.

Which server or servers should you identify? (Each correct answer presents part of the solution. Choose all that apply.)

- A. Server1
- B. Server2
- C. Server3
- D. Server4

Correct Answer: AB

Section: [none]

Explanation

Explanation/Reference:

QUESTION 61

You have a private cloud infrastructure that uses System Center 2012 R2 Virtual Machine Manager (VMM).

You plan to host several hundred private clouds for different customers by using the infrastructure.

You need to ensure that all of the customers can use any IP address range in their private cloud.

What is the best approach to achieve the goal? More than one answer choice may achieve the goal. Select the BEST answer.

- A. Create a virtual machine network that uses network virtualization.
- B. Install a VMM Network Virtualization for Generic Routing Encapsulation (NVGRE) gateway in each private cloud.
- C. Install the IP Address Management (IPAM) Server feature in each private cloud.
- D. Create a virtual machine network that uses VLAN network isolation.

Correct Answer: A

Section: [none]

Explanation

Explanation/Reference:

Network Virtualization introduced in Windows Server 2012 Hyper-V provides administrators with the ability to create multiple virtual networks on a shared physical network. In this approach to isolation, each tenant gets a complete virtual network, which includes support for virtual subnets and virtual routing. Tenants can even use their own IP addresses and subnets in these virtual networks, even if these conflict with or overlap with those used by other tenants.

Ref: <http://blogs.technet.com/b/scvmm/archive/2013/06/17/logical-networks-part-v-network-virtualization.aspx>

QUESTION 62

Your company has a private cloud that is managed by a System Center 2012 Virtual Machine Manager (VMM) infrastructure. The infrastructure contains a server named Server1 that has VMM installed.

You plan to deploy the Hyper-V server role to a server named Server2. Server2 runs Windows Server 2008 R2. Server2 is member of a workgroup.

You need to add Server2 to the VMM fabric.

What should you do? (Each correct answer presents part of the solution. Choose three.)

- A. From the VMM Administrator Console, run the Add Resource Wizard, and then click Windows Server computers in a perimeter network.
- B. From the VMM 2012 installation media, install the VMM agent on Server2.
- C. From the VMM Administrator Console, run the Add Resource Wizard, and then click Windows Server computer in an untrusted Active Directory domain.
- D. Copy the SecurityFile.txt file from Server2 to Server1.
- E. From the Services console on Server1, start the SSDP Discovery service.
- F. Copy the ApplicationHost.config file from Server2 to Server1.

Correct Answer: ABD

Section: [none]

Explanation

Explanation/Reference:

QUESTION 63

Your network contains a server named Server1 that has System Center 2012 Virtual Machine Manager (VMM) installed.

You plan to deploy a service named Service1. Service1 will contain three tiers. Each tier will contain 10 instances.

You need to configure the service template to ensure that when an application in Service1 is upgraded, Service1 remains available.

What should you configure for each tier?

- A. The maximum instance count

- B. The preferred servicing order
- C. The number of upgrade domains
- D. The minimum instance count
- E. The preferred deployment order

Correct Answer: C

Section: [none]

Explanation

Explanation/Reference:

To minimize service interruptions when a tier is updated in-place, you can specify more than one upgrade domain in the tier properties. When the tier is updated, VMM updates the virtual machines in the tier according to the upgrade domain to which they belong. VMM upgrades one upgrade domain at a time, shutting down the virtual machines running within the upgrade domain, updating them, bringing them back online, and then moving on to the next upgrade domain. By shutting down only the virtual machines running within the current upgrade domain, VMM ensures that an upgrade takes place with the least possible impact to the running service.

URL: <http://technet.microsoft.com/en-us/library/gg675089.aspx>

QUESTION 64

You are creating a Server Application Virtualization (Server App-V) package named Package1 of an application named Appl. Package1 will be included in a System Center 2012 R2 Virtual Machine Manager (VMM) service template.

You need to configure Package1 to ensure that you can modify the settings of App1 from the properties of the service template.

What should you do?

- A. From the Server App-V Sequencer, click Add Deployment Configuration Item.
- B. Modify the SFT file of Package1.
- C. From the Server App-V Sequencer, configure the Properties of the package.
- D. Modify the Open Software Description (OSD) file of Package1.

Correct Answer: A

Section: [none]

Explanation

Explanation/Reference:

QUESTION 65

Your network contains a System Center 2012 Virtual Machine Manager (VMM) infrastructure.
The infrastructure contains 50 virtual machines.

You need to deploy a Microsoft SQL Server dedicated administrator connection (DAC) package to a service.

What should you create from the VMM Administrator Console?

- A. A Run As account
- B. A Capability Profile
- C. A virtual machine template
- D. An Application Profile

Correct Answer: D

Section: [none]

Explanation

Explanation/Reference: Explanation:

<http://technet.microsoft.com/en-us/library/hh427291>



QUESTION 66

You have a deployment of System Center 2012 R2 Virtual Machine Manager (VMM).

You deploy a service by using a service template.

You need to add an additional tier to the service. The solution must minimize the amount of downtime for the service.

What should you do first from the Virtual Machine Manager console?.



<https://vceplus.com/>

- A. Create a new version of the service template.

- B. Use the Clone option.
- C. Create a new service template.
- D. Use the Scale Out option.

Correct Answer: A

Section: [none]

Explanation

Explanation/Reference:

QUESTION 67

You have a System Center 2012 R2 Virtual Machine Manager (VMM) library. The library contains three Guest OS profiles.

The profiles are configured as shown in the following table.

Profile name	Operating system
OSProfile1	32-bit version of Windows Server 2008 Standard
OSProfile2	64-bit version of Windows Server 2008 R2 Standard
OSProfile3	Windows Server 2012 R2 Standard

The library contains two Hardware profiles. The profiles are configured as shown in the following table.

Profile name	Configuration
HWProfile1	Secure Boot enabled
HWProfile2	Legacy network adapter

You plan to create a Generation 1 virtual machine template. You need to identify which profile CANNOT be used in the new template.

Which template should you identify?

- A. OSProfile3
- B. OSProfile1
- C. HWProfile2
- D. OSProfile2
- E. HWProfile1

Correct Answer: E

Section: [none]

Explanation

Explanation/Reference:**QUESTION 68**

Your network contains a System Center 2012 Virtual Machine Manager (VMM) infrastructure.
The infrastructure contains 50 Hyper-V hosts.

You plan to deploy Power Optimization for VMM.

You need to prepare the infrastructure for the planned deployment.

What should you do? (Each correct answer presents part of the solution. Choose two.)

- A. Install a Baseboard Management Controller (BMC) on each Hyper-V host.
- B. Enable Dynamic Optimization.
- C. Enable Hibernation.
- D. Enable Performance and Resource Optimization (PRO).
- E. Install a configuration provider on each Hyper-V host.

Correct Answer: AB

Section: [none]

Explanation

**Explanation/Reference:****QUESTION 69**

You plan to deploy a System Center 2012 infrastructure.

You plan to create and deploy a service named Service1.

You need to recommend a solution to deploy Service1 to a private cloud and a Windows Azure subscription.

What should you include in the recommendation?

- A. System Center 2012 Service Manager
- B. System Center 2012 Virtual Machine Manager (VMM)
- C. The Virtual Machine Manager Self-Service Portal (VMMSSP) 2.0
- D. System Center 2012 App Controller

Correct Answer: D
Section: [none]
Explanation

Explanation/Reference:

QUESTION 70

Your network contains an Active Directory domain named contoso.com. The domain contains two member servers named Server1 and Server2 that run Windows Server 2012 R2. Server1 has System Center 2012 R2 Virtual Machine Manager (VMM) installed. Server2 has the IP Address Management (IPAM) feature installed.

You need to ensure that address spaces created in VMM are visible in IPAM.

What should you do?

- A. From the Virtual Machine Manager console, create a service.
- B. From the Virtual Machine Manager console, add a network service.
- C. From Windows PowerShell, run the Enable-IpamCapabilitycmdlet
- D. From Windows PowerShell, run the Add-SCServerFeaturecmdlet

Correct Answer: B
Section: [none]
Explanation

Explanation/Reference:



<https://vceplus.com/>