

70-740.exam.110q

Number: 70-740
Passing Score: 800
Time Limit: 120 min
File Version: 1



VCE to PDF Converter : <https://vceplus.com/vce-to-pdf/>

Facebook: <https://www.facebook.com/VCE.For.All.VN/>

Twitter : https://twitter.com/VCE_Plus

Google+ : <https://plus.google.com/+Vcepluscom>

LinkedIn : <https://www.linkedin.com/company/vceplus>

<https://vceplus.com/>

Microsoft 70-740

Installation, Storage, and Compute with Windows Server 2016

Exam A

QUESTION 1

Note: This question is part of a series of questions that present the same scenario. Each question in the series contains a unique solution that might meet the stated

goals. Some question sets might have more than one correct solution, while others might not have a correct solution.

After you answer a question in this section, you will NOT be able to return to it. As a result, these questions will not appear in the review screen.

You have a server named Server1 that runs Windows Server 2016.

Server1 hosts a line-of-business application named App1. App1 has a memory leak that occasionally causes the application to consume an excessive amount of memory.

You need to log an event in the Application event log whenever App1 consumes more than 4 GB of memory.

Solution: You create a performance counter alert data collector.

Does this meet the goal?

A. Yes

B. No



Correct Answer: A

Section: (none)

Explanation

Explanation/Reference:

Explanation:

QUESTION 2

Note: This question is part of a series of questions that present the same scenario. Each question in the series contains a unique solution that might meet the stated goals. Some question sets might have more than one correct solution, while others might not have a correct solution.

After you answer a question in this section, you will NOT be able to return to it. As a result, these questions will not appear in the review screen.

You have a server named Server1 that runs Windows Server 2016.

Server1 hosts a line-of-business application named App1. App1 has a memory leak that occasionally causes the application to consume an excessive amount of memory.

You need to log an event in the Application event log whenever App1 consumes more than 4 GB of memory.

Solution: You create a system configuration information data collector.

Does this meet the goal?



<https://vceplus.com/>

- A. Yes
- B. No

Correct Answer: B

Section: (none)

Explanation

Explanation/Reference:

Explanation:



QUESTION 3

You have a Hyper-V host named Server1 that runs Windows Server 2016.

Server1 has a virtual machine named VM1. VM1 is configured to run the Docker daemon.

On VM1, you have a container network that uses transparent mode.

You need to ensure that containers that run on VM1 can obtain IP addresses from DHCP.

What should you do?

- A. On VM1, run **Get-VMNetworkAdapter-VMName VM1 | Set-VMNetworkAdapter -MacAddressSpoofing On**.
- B. On VM1, run **docker network connect**.
- C. On Server1, run **docker network connect**.
- D. On Server1, run **Get-VMNetworkAdapter -VMName VM1 | Set-VMNetworkAdapter -MacAddressSpoofing On**.

Correct Answer: D

Section: (none)

Explanation

Explanation/Reference:

Explanation:

References: <https://docs.microsoft.com/en-us/virtualization/windowscontainers/manage-containers/container-networking>

QUESTION 4

DRAG DROP

You have a server named Server1 that runs Windows Server 2016.

You plan to deploy Internet Information Services (IIS) in a Windows container.

You need to prepare Server1 for the planned deployment.

Which three actions should you perform in sequence? To answer, move the appropriate actions from the list of actions to the answer area and arrange them in the correct order.

Select and Place:

Actions

- Install the Hyper-V server role.
- Install the Base Container Images.
- Install the Container feature.
- Instal Docker.
- Install the Web Server role.

Answer Area

⏪

⏩

⏴

⏵

Correct Answer:

Actions	Answer Area
Install the Hyper-V server role.	Install the Container feature.
	Install Docker.
	Install the Base Container Images.
Install the Web Server role.	

Section: (none)

Explanation

Explanation/Reference:



QUESTION 5 HOTSPOT

You have a server named Server1 that runs Windows Server 2016 server.

Server1 has the Docker daemon configured and has a container named Container1.

You need to mount the folder C:\Folder1 on Server1 to C:\ContainerFolder in Container1.

Which command should you run? To answer, select the appropriate options in the answer area.

Hot Area:

Answer Area

▼	▼	▼	▼
Copy-ContainerFile	-Name Container1 -Path	C:\Folder1:C:\ContainerFolder	Container1
Docker	run -it -v	%windir%\ContainerFolder	Server1
Set-Service			

Correct Answer:

Answer Area

▼	▼	▼	▼
Copy-ContainerFile	-Name Container1 -Path	C:\Folder1:C:\ContainerFolder	Container1
Docker	run -it -v	%windir%\ContainerFolder	Server1
Set-Service			

Section: (none)

Explanation

Explanation/Reference:

QUESTION 6

You have a server that runs Windows Server 2016.

The server contains a storage pool named Pool1. Pool1 contains five physical disks named Disk1, Disk2, Disk3, Disk4, and Disk5.

A virtual disk named VirtualDisk1 is stored in Pool1. VirtualDisk1 uses the parity storage layout.

Disk3 fails.

You need to remove Disk3 from Pool1.

Which two commands should you run? Each correct answer presents part of the solution.

- A. Update-StoragePool -FriendlyName Pool1
- B. Set-ResiliencySetting -StoragePool Pool1 -PhysicalDiskRedundancyDefault 4
- C. Reset-PhysicalDisk -FriendlyName Disk3

D. **Set-PhysicalDisk –FriendlyName Disk3 –Usage Retired**

E. **Remove-PhysicalDisk –FriendlyName Disk3**

Correct Answer: DE

Section: (none)

Explanation

Explanation/Reference:

Explanation:

QUESTION 7

You have an Active Directory domain named Contoso.com. The domain contains servers named Server1, Server2 and Server3 that run Windows Server 2016.

Server1 and Server 2 are nodes in a Hyper-V cluster named Cluster1. You add a Hyper-V Replica Broker role named Broker1 to Cluster1.

Server3 is Hyper-V server. A virtual machine VM1 runs on Server3.

Live Migration is enabled on all three servers and it is configured to use Kerberos authentication only.

You need to ensure that you can perform the migration of VM1 to Server2.

What should you do?

- A. Modify the **Storage Migration** settings on Server3.
- B. Modify the **Cluster** permissions for Cluster1.
- C. Add the Server3 computer account to the **Replicator** group on Server1 and Server2.
- D. Modify the **Delegation** settings of the Server3 computer account.

Correct Answer: D

Section: (none)

Explanation

Explanation/Reference:

Explanation:

References:

[https://technet.microsoft.com/en-us/library/jj134199\(v=ws.11\).aspx#BKMK_Step1](https://technet.microsoft.com/en-us/library/jj134199(v=ws.11).aspx#BKMK_Step1)

QUESTION 8 HOTSPOT

You implement a Windows Server 2016 failover cluster named Cluster1 as a highly available file server.

You run the Get-Cluster cmdlet and receive the following output.

```
AddEvictDelay : 60
AdministrativeAccessPoint : Dns
AutoAssignNodeSite : 0
AutoBalancerMode : 2
AutoBalancerLevel : 1
ClusSvcHangTimeout : 135
ClusSvcRegroupStageTimeout : 5
ClusSvcRegroupTickInMilliseconds : 300
ClusterEnforcedAntiAffinity : 0
ClusterFunctionalLevel : 9
ClusterUpgradeVersion : 7
ClusterGroupWaitDelay : 120
ClusterLogLevel : 3
ClusterLogSize : 300
DatabaseReadWriteMode : 0
DefaultNetworkRole : 3
Description :
Domain : contoso.com
EnableSharedVolumes : Enabled
FixQuorum : 0
Id : ec6121be-f816-426b-b550-72cafb943f1b
Name : cluster1
```

Use the drop-down menus to select the answer choice that completes each statement based on the information presented in the graphic.

Hot Area:

Answer Area

You can perform Cluster-Aware Updating (CAU) in **[answer choice]**.

	▼
self-updating mode only	
remote-updating mode only	
remote-updating mode and self-updating mode	

You can use **[answer choice]** to create a file share in Cluster1.

	▼
DFS Management	
Failover Cluster Manager	
File Server Resource Manager	
Server Manager	

Correct Answer:



Answer Area

You can perform Cluster-Aware Updating (CAU) in **[answer choice]**.

	▼
self-updating mode only	
remote-updating mode only	
remote-updating mode and self-updating mode	

You can use **[answer choice]** to create a file share in Cluster1.

	▼
DFS Management	
Failover Cluster Manager	
File Server Resource Manager	
Server Manager	

Section: (none)

Explanation

Explanation/Reference:

QUESTION 9

You have a Windows Server 2016 Hyper-V failover cluster that contains two nodes named Node1 and Node2.

On Node1, you create a virtual machine named VM01 by using Hyper-V Manager.

You need to configure VM01 to move to Node2 automatically if Node1 becomes unavailable.

What should you do?



<https://vceplus.com/>

- A. From **Failover Cluster Manager**, run **Configure Role** actions.
- B. From **Hyper-V Manager**, click **VM01**, and click **Enable Replication**.
- C. From **Hyper-V Manager**, click **Node1**, and then modify the Hyper-V settings.
- D. From **Windows PowerShell**, run the **Enable-VMReplicationcmdlet**.

Correct Answer: A

Section: (none)

Explanation

Explanation/Reference:

Explanation:

References: <http://windowsitpro.com/hyper-v/make-vm-highly-available-windows-server-2012>

QUESTION 10

Your network contains three Hyper-V hosts. You add all of the hosts to a cluster.

You need to create highly available storage spaces that connect to directly attached storage on the hosts.

Which cmdlet should you use?

- A. **Add-ClusterDisk**
- B. **Enable-ClusterStorageSpacesDirect**
- C. **Update-ClusterVirtualMachineConfiguration**
- D. **Set-StoragePool**

Correct Answer: B

Section: (none)

Explanation

Explanation/Reference:

Explanation:

QUESTION 11

You have four servers named Server1, Server2, Server3, and Server4 that run Windows Server 2016. Each server has a single 4-TB SATA hard disk.

To each server you attach a new 4-TB SATA hard disk.

You need to create a new storage cluster that uses Storage Spaces Direct. The storage pool must contain all of the new disks.

Which command should you run before you enable Storage Space Direct?

- A. **Add-ClusterSharedVolume -Name "Disk 1" -Cluster Cluster1**
- B. **New-Cluster -Name Cluster1 -Node 'Server1', 'Server2', 'Server3', 'Server4' -NoStorage**
- C. **Get-ClusterAvailableDisk -Cluster Cluster1 | Add-ClusterDisk**
- D. **New-ClusterStorageEnclosure -id 1 -name Cluster1 -type jbod -ConnectionString "Server1,Server2,Server3,Server4"**

Correct Answer: B

Section: (none)

Explanation

Explanation/Reference:

Explanation:

QUESTION 12

HOTSPOT

Your network contains an Active Directory domain named contoso.com. The domain contains four servers named Server1, Server2, Server3, and Server4 that run Windows Server 2016.

Server1 and Server2 are nodes in a Hyper-V cluster named Cluster1. You have a highly available virtual machine named VM1. Server1 is the owner node of VM1. Server3 and Server4 are nodes of a scale-out file server named Cluster2.

The storage on Server1 is configured as shown in the following table.

Location	Type
C:\ClusterStorage\Volume1	iSCSI Cluster Shared Volumes (CSV)
D:\	A locally attached disk
E:\	An iSCSI LUN
\\Cluster2\Share1	A file share on Cluster2

VM1 is stored in C:\ClusterStorage\Volume1.

You need to move the virtual disk of VM1 to a different location.

What should you do? To answer, select the appropriate options in the answer area.

Hot Area:

Answer Area

Tool you should use to move the virtual disk of VM1:

	▼
Disk Management	
Failover Cluster Manager	
Hyper-V Manager	
Server Manager	

Location to which you should move the virtual disk of VM1:

	▼
D:\	
E:\	
\\Cluster2\Share1	

Correct Answer:

Answer Area

Tool you should use to move the virtual disk of VM1:

	▼
Disk Management	
Failover Cluster Manager	
Hyper-V Manager	
Server Manager	

Location to which you should move the virtual disk of VM1:

	▼
D:\	
E:\	
\\Cluster2\Share1	

Section: (none)

Explanation

Explanation/Reference:



QUESTION 13

DRAG DROP

Note: This question is part of a series of questions that use the same scenario. For your convenience, the scenario is repeated in each question. Each question presents a different goal and answer choices, but the text of the scenario is exactly the same in each question in this series.

Your network contains an Active Directory domain named contoso.com. The functional level of the forest and the domain is Windows Server 2008 R2. All servers in the domain run Windows Server 2016 Standard. The domain contains 300 client computers that run either Windows 8.1 or Windows 10.

The domain contains nine servers that are configured as shown in the following table.

Name	Configuration	Planned changes
Server1	Domain controller	None
Server2	File server	Run Failover Clustering and Storage Spaces Direct
Server3	File server	Run Failover Clustering and Storage Spaces Direct
Server4	Hyper-V host	Run shielded virtual machines
Server5	Hyper-V host	None
Server6	Member server	Run Active Directory Federation Services (AD FS)
VM1	Virtual machine hosted on Server5	None
VM2	Virtual machine hosted on Server5	None
VM3	Virtual machine hosted on Server5	None

The virtual machines are configured as follows:

- Each virtual machine has one virtual network adapter.
- VM1 and VM2 are part of a Network Load Balancing (NLB) cluster.
- All of the servers on the network can communicate with all of the virtual machines.

You need to install the correct edition of Windows Server 2016 to support the planned changes for Server2, Server3, Server4, and Server6.

Which edition or editions should you choose for each server? To answer, drag the appropriate editions to the correct servers. Each edition may be used once, more than once, or not at all. You may need to drag the split bar between panes or scroll to view content.

Select and Place:

Editions

Standard only

Datacenter only

Standard or Datacenter

Answer Area

Server2:

Edition

Server3:

Edition

Server4:

Edition

Server6:

Edition

Correct Answer:

Editions

Standard only

Datacenter only

Standard or Datacenter

Answer Area

Server2:

Datacenter only

Server3:

Datacenter only

Server4:

Datacenter only

Server6:

Standard or Datacenter

Section: (none)

Explanation

Explanation/Reference:

QUESTION 14

Note: This question is part of a series of questions that use the same scenario. For your convenience, the scenario is repeated in each question. Each question presents a different goal and answer choices, but the text of the scenario is exactly the same in each question in this series.

Your network contains an Active Directory domain named contoso.com. The functional level of the forest and the domain is Windows Server 2008 R2. All servers in the domain run Windows Server 2016 Standard. The domain contains 300 client computers that run either Windows 8.1 or Windows 10.

The domain contains nine servers that are configured as shown in the following table.

Name	Configuration	Planned changes
Server1	Domain controller	None
Server2	File server	Run Failover Clustering and Storage Spaces Direct
Server3	File server	Run Failover Clustering and Storage Spaces Direct
Server4	Hyper-V host	Run shielded virtual machines
Server5	Hyper-V host	None
Server6	Member server	Run Active Directory Federation Services (AD FS)
VM1	Virtual machine hosted on Server5	None
VM2	Virtual machine hosted on Server5	None
VM3	Virtual machine hosted on Server5	None

The virtual machines are configured as follows:

- Each virtual machine has one virtual network adapter.
- VM1 and VM2 are part of a Network Load Balancing (NLB) cluster.
- All of the servers on the network can communicate with all of the virtual machines.

On Server4, you plan to provision a new volume that will be used to create large, fixed-size VHDX files.

Which type of file system should you use for the new volume to minimize the amount of time required to create the VHDX files?

- A. ReFS
- B. NTFS
- C. CSVFS
- D. exFAT

Correct Answer: A

Section: (none)

Explanation

Explanation/Reference:

Explanation:

QUESTION 15

Note: This question is part of a series of questions that use the same scenario. For your convenience, the scenario is repeated in each question. Each question presents a different goal and answer choices, but the text of the scenario is exactly the same in each question in this series.

Your network contains an Active Directory domain named contoso.com. The functional level of the forest and the domain is Windows Server 2008 R2. All servers in the domain run Windows Server 2016 Standard. The domain contains 300 client computers that run either Windows 8.1 or Windows 10.

The domain contains nine servers that are configured as shown in the following table.

Name	Configuration	Planned changes
Server1	Domain controller	None
Server2	File server	Run Failover Clustering and Storage Spaces Direct
Server3	File server	Run Failover Clustering and Storage Spaces Direct
Server4	Hyper-V host	Run shielded virtual machines
Server5	Hyper-V host	None
Server6	Member server	Run Active Directory Federation Services (AD FS)
VM1	Virtual machine hosted on Server5	None
VM2	Virtual machine hosted on Server5	None
VM3	Virtual machine hosted on Server5	None

The virtual machines are configured as follows:

- Each virtual machine has one virtual network adapter.
- VM1 and VM2 are part of a Network Load Balancing (NLB) cluster.
- All of the servers on the network can communicate with all of the virtual machines.

You need to minimize the likelihood that a virtual machine running malicious code will consume excessive resources on Server5.

What should you do?

- Configure the virtual machines as shielded virtual machines.
- Run the **Set-VMProcessor** cmdlet and specify the **EnableHostResourceProtection** parameter.
- Run the **Set-VMProcessor** cmdlet and specify the **MaximumCountPerNumaNode** parameter.
- Configure **VM Network Adapter Isolation**.

Correct Answer: B

Section: (none)

Explanation

Explanation/Reference:

Explanation:

QUESTION 16

Note: This question is part of a series of questions that use the same or similar answer choices. An answer choice may be correct for more than one question in the series. Each question is independent of the other questions in this series. Information and details provided in a question apply only to that question.

You have a Hyper-V host named Server1 that runs Windows Server 2016. Server1 has a dynamically expanding virtual hard disk (VHD) file that is 900 GB. The VHD contains 400 GB of free space.

You need to reduce the amount of disk space used by the VHD.

What should you run?

- A. the **Mount-VHD** cmdlet
- B. the **Diskpart** command
- C. the **Set-VHD** cmdlet
- D. the **Set-VM** cmdlet
- E. the **Set-VMHost** cmdlet
- F. the **Set-VMProcessor** cmdlet
- G. the **Install-WindowsFeature** cmdlet
- H. the **Optimize-VHD** cmdlet



Correct Answer: H

Section: (none)

Explanation

Explanation/Reference:

Explanation:

QUESTION 17

Note: This question is part of a series of questions that use the same or similar answer choices. An answer choice may be correct for more than one question in the series. Each question is independent of the other questions in this series. Information and details provided in a question apply only to that question.

You have a Hyper-V host named Server1 that runs Windows Server 2016. Server1 contains a virtual machine named VM1.

You need to ensure that you can use nested virtualization on VM1.

What should you run on Server1?

- A. the **Mount-VHD** cmdlet
- B. the **Diskpart** command
- C. the **Set-VHD** cmdlet
- D. the **Set-VM** cmdlet
- E. the **Set-VMHost** cmdlet
- F. the **Set-VMProcessor** cmdlet
- G. the **Install-WindowsFeature** cmdlet
- H. the **Optimize-VHD** cmdlet

Correct Answer: F

Section: (none)

Explanation

Explanation/Reference:

Explanation:

QUESTION 18

Note: This question is part of a series of questions that use the same or similar answer choices. An answer choice may be correct for more than one question in the series. Each question is independent of the other questions in this series. Information and details provided in a question apply only to that question.

You have a Hyper-V host named Server1 that runs Windows Server 2016. Server1 has a virtual machine named VM1 that uses a single VHDX file. VM1 is configured as shown in the following table.

Configuration	Details
Virtual machine generation	V2
Operating system	Windows 8
File system	NTFS
Number of partitions	1
Disk type	Basic
Unallocated disk space	100 GB

You plan to use VM1 as a virtual Machine Template to deploy shielded virtual machines.

You need to ensure that VM1 can be used to deploy shielded virtual machines.

What should you run?



<https://vceplus.com/>

- A. the **Mount-VHD** cmdlet
- B. the **Diskpart** command
- C. the **Set-VHD** cmdlet
- D. the **Set-VM** cmdlet
- E. the **Set-VMHost** cmdlet
- F. the **Set-VMProcessor** cmdlet
- G. the **Install-WindowsFeature** cmdlet
- H. the **Optimize-VHD** cmdlet



Correct Answer: B

Section: (none)

Explanation

Explanation/Reference:

Explanation:

The VHDX requires two partitions.

QUESTION 19

Note: This question is part of a series of questions that use the same scenario. For your convenience, the scenario is repeated in each question. Each question presents a different goal and answer choices, but the text of the scenario is exactly the same in each question in this series.

A company named Contoso, Ltd. has several servers that run Windows Server 2016. Contoso has a Hyper-V environment that uses failover clustering and Windows Server Update Services (WSUS). The environment contains several Windows containers and several virtual machines.

The WSUS deployment contains one upstream server that is located on the company's perimeter network and several downstream servers located on the internal network. A firewall separates the upstream server from the downstream servers.

You plan to deploy a human resources application to a new server named HRServer5. HRServer5 contains a FAT32-formatted data volume.

The CIO of Contoso identifies the following requirements for the company's IT department:

- Deploy a failover cluster to two new virtual machines.
- Store all application databases by using Encrypted File System (EFS).
- Ensure that each Windows container has a dedicated IP address assigned by a DHCP server.
- Produce a report that lists the processor time used by all of the processes on a server named Server1 for five hours.
- Encrypt all communication between the internal network and the perimeter network, including all WSUS communications.
- Automatically load balance the virtual machines hosted in the Hyper-V cluster when processor utilization exceeds 70 percent.

You need to modify the Hyper-V cluster to meet the load balancing requirement for the virtual machine.

Which command should you run?

- A. **(Get-ClusterParameter).AutoBalancerMode=2**
- B. **(Get-Cluster).AutoBalancerMode=2**
- C. **(Get-ClusterParameter).AutoBalancerLevel=2**
- D. **(Get-Cluster).AutoBalancerLevel=2**

Correct Answer: D

Section: (none)

Explanation

Explanation/Reference:

Explanation:

QUESTION 20

Note: This question is part of a series of questions that use the same scenario. For your convenience, the scenario is repeated in each question. Each question presents a different goal and answer choices, but the text of the scenario is exactly the same in each question in this series.

A company named Contoso, Ltd. has several servers that run Windows Server 2016. Contoso has a Hyper-V environment that uses failover clustering and Windows Server Update Services (WSUS). The environment contains several Windows containers and several virtual machines.

The WSUS deployment contains one upstream server that is located on the company's perimeter network and several downstream servers located on the internal network. A firewall separates the upstream server from the downstream servers.

You plan to deploy a human resources application to a new server named HRServer5. HRServer5 contains a FAT32-formatted data volume.

The CIO of Contoso identifies the following requirements for the company's IT department:

- Deploy a failover cluster to two new virtual machines.
- Store all application databases by using Encrypted File System (EFS).
- Ensure that each Windows container has a dedicated IP address assigned by a DHCP server.

- Produce a report that lists the processor time used by all of the processes on a server named Server1 for five hours.
- Encrypt all communication between the internal network and the perimeter network, including all WSUS communications.
- Automatically load balance the virtual machines hosted in the Hyper-V cluster when processor utilization exceeds 70 percent.

What should you do to prepare the data volume on HRServer5 to store the databases required for the human resources application?

- A. Format the data volume by using ReFS.
- B. Enable Trusted Platform Module (TPM) on HRServer5.
- C. Format the data volume by using NTFS.
- D. Enable BitLocker Drive Encryption (BitLocker) on the data volume.

Correct Answer: C

Section: (none)

Explanation

Explanation/Reference:

Explanation:

QUESTION 21

HOTSPOT



Note: This question is part of a series of questions that use the same scenario. For your convenience, the scenario is repeated in each question. Each question presents a different goal and answer choices, but the text of the scenario is exactly the same in each question in this series.

A company named Contoso, Ltd. has several servers that run Windows Server 2016. Contoso has a Hyper-V environment that uses failover clustering and Windows Server Update Services (WSUS). The environment contains several Windows containers and several virtual machines.

The WSUS deployment contains one upstream server that is located on the company's perimeter network and several downstream servers located on the internal network. A firewall separates the upstream server from the downstream servers.

You plan to deploy a human resources application to a new server named HRServer5. HRServer5 contains a FAT32-formatted data volume.

The CIO of Contoso identifies the following requirements for the company's IT department:

- Deploy a failover cluster to two new virtual machines.
- Store all application databases by using Encrypted File System (EFS).
- Ensure that each Windows container has a dedicated IP address assigned by a DHCP server.
- Produce a report that lists the processor time used by all of the processes on a server named Server1 for five hours.
- Encrypt all communication between the internal network and the perimeter network, including all WSUS communications.
- Automatically load balance the virtual machines hosted in the Hyper-V cluster when processor utilization exceeds 70 percent.

You need to create a Data Collector Set to meet the requirement for the processor time report.

What command should you run to create the Data Collector Set? To answer, select the appropriate options in the answer area.

Hot Area:

Answer Area

▼	create	▼	perf_log -c "\\Process(_Total)\\% Processor Time" -max 10 -rf 05:00
lodctr		alert	
logman		config	
perform		counter	
tracert		trace	

Correct Answer:

Answer Area

▼	create	▼	perf_log -c "\\Process(_Total)\\% Processor Time" -max 10 -rf 05:00
lodctr		alert	
logman		config	
perform		counter	
tracert		trace	

Section: (none)

Explanation

Explanation/Reference:

QUESTION 22

Your network contains a new Active Directory domain named contoso.com.

You have a security policy that states that new servers should run Nano Server whenever possible.

Which server role can be deployed on a Nano Server?

- A. Active Directory Domain Services
- B. DHCP Server
- C. Network Policy and Access Services
- D. Web Server (IIS)

Correct Answer: D

Section: (none)

Explanation

Explanation/Reference:

Explanation:

QUESTION 23

You have a server named Server1 that runs Windows Server 2016.

The Windows Server 2016 installation media is mounted as drive D.

You copy the NanoServerImageGenerator folder from the D:\NanoServer folder to the C:\NanoServer folder.

You need to create a custom Nano Server image that includes the Hyper-V server role. The image will be used to deploy Nano Servers to physical servers.

Which two commands should you run? Each correct answer presents part of the solution.

- A. **New-NanoServerImage -Edition Standard -DeploymentType Guest -MediaPath D:\ -TargetPath .\NanoServerImage\NanoServer.wim -Compute**
- B. **Install-PackageProvider NanoServerPackage**
- C. **Import-PackageProvider NanoServerPackage**
- D. **New-NanoServerImage -Edition Standard -DeploymentType Host -MediaPath D:\ -TargetPath .\NanoServerImage\NanoServer.wim -Compute**
- E. **Import-Module C:\NanoServer\NanoServerImageGenerator**

Correct Answer: DE

Section: (none)

Explanation

Explanation/Reference:

Explanation:

References: <https://technet.microsoft.com/en-us/windows-server-docs/get-started/nano-server-quick-start>

QUESTION 24

DRAG DROP

You have a network that contains several servers that run Windows Server 2016.

You need to use Desired State Configuration (DSC) to configure the servers to meet the following requirements:

- Install the Web Server server role
- Start the World Wide Web Publishing service.

How should you configure the DSC resources? To answer, drag the appropriate values to the correct locations. Each value may be used once, more than once, or not at all. You may need to drag the split bar between panes or scroll to view content.

Select and Place:

Values

Name
Service
WindowsFeature
WindowsProcess
Present
Source
Running
Stopped

Answer Area

```

Value WebServerRole
{
  Ensure = "Value"
  Name = "Web-Server"
}

Value WorldWideWebPublishing
{
  Name = "W3SVC"

  StartupType = "Automatic"

  State = "Value"
}
          
```

Correct Answer:

Values	Answer Area
Name	WindowsFeature WebServerRole
	{
	Ensure = "Present"
WindowsProcess	Name = "Web-Server"
	}
Source	Service WorldWideWebPublishing
	{
Stopped	Name = "W3SVC"
	StartupType = "Automatic"
	State = "Running"
	}

Section: (none)

Explanation

Explanation/Reference:

QUESTION 25

You have a server named Server1 that runs Windows Server 2016.

You need to install the DNS Server role on Server1.

What should you run?

- A. the **dns.exe** command
- B. the **optionalfeatures.exe** command

- C. the **Install-Package** cmdlet
- D. the **Enable-WindowsOptionalFeature** cmdlet

Correct Answer: D

Section: (none)

Explanation

Explanation/Reference:

Explanation:

QUESTION 26

You have a server named Server1 that runs Windows Server 2016.

Server1 has Internet connectivity.

You have a Nano Server image.

You need to download and save a Nano Server package in the Nano Server image. The package is NOT included in the Windows Server 2016 installation media.

Which two cmdlets should you run on Server1? Each correct answer presents part of the solution.

- A. **Set-PackageSource**
- B. **Install-PackageProvider**
- C. **Add-AppxProvisionedPackage**
- D. **Save-NanoServerPackage**
- E. **Add-WindowsPackage**

Correct Answer: BD

Section: (none)

Explanation

Explanation/Reference:

Explanation:

QUESTION 27

You have a server named Server1 that runs Windows Server 2016 and has the Hyper-V server role installed.

On server1, you plan to create a virtual machine named VM1.

You need to ensure that you can start VM1 from the network.

What are two possible ways to achieve the goal? Each correct answer presents a complete solution.

- A. Create a generation 2 virtual machine.
- B. Create a generation 1 virtual machine and run the **Enable-NetAdapterPackageDirectcmdlet**.
- C. Create a generation 1 virtual machine that has a legacy network adapter.
- D. Create a generation 1 virtual machine and configure a single root I/O virtualization (SRV-IO) interface for the network adapter.

Correct Answer: AC

Section: (none)

Explanation

Explanation/Reference:

Explanation:

QUESTION 28

HOTSPOT

You have a server named Server1 that runs Windows Server 2016 and has the Hyper-V server role installed.



<https://vceplus.com/>

You open Disk Management on Server1 as shown in the following graphic.

Disk 11 Basic 10.74 GB Offline	10.74 GB
Disk 12 Basic 499 MB Reserved	Small Volume (H:) 497 MB NTFS Healthy (Primary Partition)
Disk 13 Unknown 4.88 GB Not Initialized	4.88 GB Unallocated
CD-ROM 0 DVD (E:) No Media	

You plan to configure Disk 13 as a pass-through disk for a generation 1 virtual machine.

Use the drop-down menus to select the answer choice that completes each statement based on the information presented in the graphic.

Hot Area:

Answer Area

The status of Disk 13 must be set to **[answer choice]**.

	▼
Initializing	
Offline	
Online	

If the virtual machine uses Disk 13 as the system partition, Disk 13 must be attached to **[answer choice]** in Hyper-V Manager.

	▼
A fibre Channel adapter	
an IDE controller	
a SCSI controller	

Correct Answer:



Answer Area

The status of Disk 13 must be set to **[answer choice]**.

	▼
Initializing	
Offline	
Online	

If the virtual machine uses Disk 13 as the system partition, Disk 13 must be attached to **[answer choice]** in Hyper-V Manager.

	▼
A fibre Channel adapter	
an IDE controller	
a SCSI controller	

Section: (none)

Explanation

Explanation/Reference:

References: <https://blogs.technet.microsoft.com/askcore/2008/10/24/configuring-pass-through-disks-in-hyper-v/>

QUESTION 29

HOTSPOT

You have a Hyper-V host that runs Windows Server 2016. The Hyper-V host has a virtual machine named VM1.

You have a VHD named VHD1.vhdx that has a generalized image of Windows Server 2016.

You plan to create multiple virtual machines that will use the generalized image.

You need to create differencing disks based on VHD1.vhdx.

What command should you run? To answer, select the appropriate options in the answer area.

Hot Area:

Answer Area

	▼	-Path "C:\VHDs\VHD1Diff.VHDX"
Add-VMHardDiskDrive		
New-VHD		
Set-VHD		
Set-VMHardDiskDrive		
	▼	"C:\VHDs\VHD1.VHDX" -Differencing
-ParentPath		
-SourceDisk		

Correct Answer:

Answer Area

	▼	-Path "C:\VHDs\VHD1Diff.VHDX"
Add-VMHardDiskDrive		
New-VHD		
Set-VHD		
Set-VMHardDiskDrive		
	▼	"C:\VHDs\VHD1.VHDX" -Differencing
-ParentPath		
-SourceDisk		

Section: (none)

Explanation

Explanation/Reference:



QUESTION 30

You have a Hyper-V host that runs Windows Server 2016. The host contains a virtual machine named VM1. VM1 has resource metering enabled.

You need to use resource metering to track the amount of network traffic that VM1 sends to the 10.0.0.0/8 network.

Which cmdlet should you run?

- A. **Add-VMNetworkAdapterAcl**
- B. **Set-VMNetworkAdapter**
- C. **New-VMResourcePool**
- D. **Set-VMNetworkAdapterRoutingDomainMapping**

Correct Answer: A

Section: (none)

Explanation

Explanation/Reference:

Explanation:

QUESTION 31
DRAG DROP


Your network contains two Hyper-V servers named Server1 and Server2. Server1 has Windows Server 2012 R2 installed. Server2 has Windows Server 2016 installed.

You perform a live migration of a virtual machine named VM1 from Server1 to Server2.

You need to create a production checkpoint for VM1 on Server2.

Which three Windows PowerShell cmdlets should you run in sequence? To answer, move the appropriate Windows PowerShell cmdlets from the list of actions to the answer area and arrange them in the correct order.

Select and Place:

Cmdlets	Answer Area
Set-VM	 <div style="display: flex; justify-content: space-around; align-items: center;"> <div style="text-align: center;"> <p>⏪</p> <p>⏩</p> </div> <div style="text-align: center;"> <p>⏴</p> <p>⏵</p> </div> </div>
Update-VMVersion	
Checkpoint-VM	
Set-VMHost	
Stop-VM	

Correct Answer:

Cmdlets

Set-VM

Set-VMHost

Answer Area

Stop-VM

Update-VMVersion


◀

▶

Checkpoint-VM

▲

▼



Section: (none)

Explanation

Explanation/Reference:

QUESTION 32

You have a Hyper-V host named Server1 that runs Windows Server 2016. Server1 has two virtual machines named VM1 and VM2.

You discover that VM1 and VM2 can communicate with Server1 over the network.

You need to ensure that VM1 and VM2 can communicate with each other only. The solution must prevent VM1 and VM2 from communicating with Server1.

Which cmdlet should you use?

- A. **Set-VMSwitch**
- B. **Enable-VMSwitchExtension**
- C. **Set-NetNeighbor**
- D. **Remove-VMSwitchTeamMember**

Correct Answer: A

Section: (none)

Explanation

Explanation/Reference:

Explanation:

QUESTION 33

DRAG DROP

You are planning the configuration of a virtual network switch for a Hyper-V environment. The environment will contain the following Hyper-V hosts: - A server named Server1 will have 10 virtual machines that must be able to communicate with each other. The virtual machines must be prevented from communicating with Server1 and all other servers on the corporate network.

- A two-node failover cluster named Cluster1 will have 20 virtual machines. The virtual machines will run on both nodes. Hyper-V hosts on the corporate network must be able to connect to the virtual machines.

Which type of virtual switch should you select for each Hyper-V host? To answer, drag the appropriate virtual switch types to the correct hosts. Each virtual switch type must be used once, more than once, or not at all. You may need to drag the split bar between panes or scroll to view content.

Select and Place:

**Virtual Switch
Types**

External

Internal

Private



Answer Area

10 virtual machines on Server1:

20 virtual machines on Cluster1:

Correct Answer:

Virtual Switch Types

Internal

Answer Area

10 virtual machines on Server1:

Private

20 virtual machines on Cluster1:

External

Section: (none)

Explanation

Explanation/Reference:

QUESTION 34

You have a Hyper-V host named Server1 that runs Windows Server 2016. Server1 contains four virtual machines that are configured as shown in the following table.

Virtual machine name	Configuration
VM1	A shielded virtual machine that runs Windows Server 2012 R2
VM2	A shielded virtual machine that runs Windows Server 2016
VM3	A virtual machine that runs Windows Server 2012 R2 and has Secure Boot enabled
VM4	A virtual machine that runs Windows Server 2016 and has all of its drivers protected by using BitLocker Drive Encryption (BitLocker)

To which virtual machine or machines can you connect by using Virtual Machine Connection from Hyper-V Manager?

- A. VM1, VM2, VM3, and VM4
- B. VM4 only
- C. VM1 and VM2 only
- D. VM3 and VM4 only
- E. VM2 only

Correct Answer: D

Section: (none)

Explanation

Explanation/Reference:

Explanation:

QUESTION 35

Note: This question is part of a series of questions that use the same or similar answer choices. An answer choice may be correct for more than one question in the series. Each question is independent of the other questions in this series. Information and details provided in a question apply only to that question.

You have a two-node Hyper-V cluster named Cluster1 at a primary location and a stand-alone Hyper-V host named Server1 at a secondary location.

A virtual machine named VM1 runs on Cluster1.

You configure a Hyper-V Replica of VM1 to Server1.

You need to perform a Test Failover of VM1.

Which tool should you use?

- A. the **clussvc.exe** command
- B. the **cluster.exe** command
- C. the **Computer Management** console
- D. the **configurehyperv.exe** command
- E. the **Disk Management** console
- F. the **Failover Cluster Manager** console
- G. the **Hyper-V Manager** console
- H. the **Server Manager Desktop** app

Correct Answer: G

Section: (none)

Explanation

Explanation/Reference:

Explanation:

QUESTION 36

Note: This question is part of a series of questions that use the same or similar answer choices. An answer choice may be correct for more than one question in the series. Each question is independent of the other questions in this series. Information and details provided in a question apply only to that question.

You have three servers named Server1, Server2, and Server3 that run Windows Server 2016.

The servers are configured only with the components listed in the table below.

Server name	Components installed
Server1	Hyper-V server role
Server2	Hyper-V server role
Server3	iSCSI Target Server role service

You need to create a Hyper-V cluster.

Which tool should you use first?

- A. the **clussvc.exe** command
- B. the **cluster.exe** command
- C. the Computer Management console
- D. the **configurehyperv.exe** command
- E. the Disk Management console
- F. the Failover Cluster Manager console
- G. the Hyper-V Manager console
- H. the Server Manager app



Correct Answer: H

Section: (none)

Explanation

Explanation/Reference:

Explanation:

QUESTION 37

Note: This question is part of a series of questions that use the same or similar answer choices. An answer choice may be correct for more than one question in the series. Each question is independent of the other questions in this series. Information and details provided in a question apply only to that question.

You have a Hyper-V host named Server1 that runs Windows Server 2016 and a two-node scale-out file server cluster named Cluster1.

A virtual machine named VM1 runs on Server1.

You need to migrate the storage on VM1 to Cluster1.

Which tool should you use?

- A. the **clussvc.exe** command
- B. the **cluster.exe** command
- C. the Computer Management console
- D. the **configurehyperv.exe** command
- E. the Disk Management console
- F. the Failover Cluster Manager console
- G. the Hyper-V Manager console
- H. the Server Manager app

Correct Answer: G

Section: (none)

Explanation

Explanation/Reference:

Explanation:

QUESTION 38

You have a Nano Server named Nano1. Which cmdlet should you use to identify whether the DNS Server role is installed on Nano1?

- A. **Find-NanoServerPackage**
- B. **Get-Package**
- C. **Find-Package**
- D. **Get-WindowsOptionalFeature**

Correct Answer: B

Section: (none)

Explanation

Explanation/Reference:

Explanation:

QUESTION 39

Note: In this section, you'll see one or more sets of questions with the same scenario and problem. Each question presents a unique solution to the problem, and you must determine whether the solution meets the stated goals. Any of the solutions might solve the problem. It is also possible that none of the solutions solve the problem.

Once you answer a question in this section, you will NOT be able to return to it. As a result these questions will not appear in the review screen.

Note: This question is part of a series of questions that present the same scenario. Each question in the series contains a unique solution. Determine whether the solution meets the stated goals.

Your network contains an Active Directory forest named contoso.com. The forest contains a member server named Server1 that runs Windows Server 2016. All domain controllers run Windows Server 2012 R2. Contoso.com has the following configuration:

```
PS C:\> (Get-ADForest). ForestMode Windows2008R2Forest
PS C:\> (Get-ADDomain). DomainMode Windows2008R2Domain
PS C:\>
```

You plan to deploy an Active Directory Federation Services (AD FS) farm on Server1 and to configure device registration. You need to configure Active Directory to support the planned deployment.

Solution: You raise the domain functional level to Windows Server 2012 R2.

Does this meet the goal?

- A. Yes
- B. No

Correct Answer: B

Section: (none)

Explanation

Explanation/Reference:

Explanation:

QUESTION 40

You are configuring a Windows Server 2016 failover cluster in a workgroup. Before installing one of the nodes, you run the ipconfig /all command and receive the following output:



Windows IP Configuration

```
Host Name..... : Server1
Primary DNS Suffix..... :
Node Type..... : Hybrid
IP Routing Enabled..... : No
WINS Proxy Enabled..... : No
DNS Suffix Search List..... :
```

Ethernet adapter Ethernet:

```
Connection-specific DNS Suffix... :
Description..... : Microsoft Hyper-V Network Adapter
Physical Address..... : 00-15-SD-01-62-17
DHCP Enabled..... : Yes
Autoconfiguration Enabled..... : Yes
Link-local IPv6 Address..... : fe80::7548:46d8:8ffc:d5ab%17 (Preferred)
IPv4 Address..... : 192.168.1.154 (Preferred)
Subnet Mask..... : 255.255.255.0
Default Gateway..... : 192.168.1.10
DHCPv6 IAID..... : 369099429
DHCPv6 Client DUID..... : 00-01-00-01-1A-1D-5D-60-00-02-A5-4E-F4-85
DNS Servers..... : 192.168.1.32
NetBIOS over TCP/IP..... : Disabled
```

You need to ensure that Server1 can be added as a node in the cluster. What should you do?



<https://vceplus.com/>

- A. Assign a static IP address
- B. Change the **Node Type** to **Broadcast**
- C. Configure a DNS suffix
- D. Enable **NetBIOS over TCP/IP**

Correct Answer: C

Section: (none)

Explanation

Explanation/Reference:

Explanation:

QUESTION 41

You have a server named Server1 that runs Windows Server 2016. You need to configure Server1 as a multitenant RAS Gateway. What should you install on Server1?

- A. the **Network Policy** and **Access Services** server role
- B. the **Remote Access** server role
- C. the **Data Center Bridging** feature
- D. the **Network Controller** server role

Correct Answer: B

Section: (none)

Explanation

Explanation/Reference:

Explanation:



QUESTION 42

Note: In this section, you'll see one or more sets of questions with the same scenario and problem. Each question presents a unique solution to the problem, and you must determine whether the solution meets the stated goals. Any of the solutions might solve the problem. It is also possible that none of the solutions solve the problem.

Once you answer a question in this section, you will NOT be able to return to it. As a result these questions will not appear in the review screen.

Note: This question is part of a series of questions that present the same scenario. Each question in the series contains a unique solution. Determine whether the solution meets the stated goals.

Your network contains an Active Directory forest named contoso.com. The forest contains a member server named Server1 that runs Windows Server 2016. All domain controllers run Windows Server 2012 R2. Contoso.com has the following configuration:

```
PS C:\> (Get-ADForest). ForestMode Windows2008R2Forest
PS C:\> (Get-ADDomain). DomainMode Windows2008R2Domain
PS C:\>
```

You plan to deploy an Active Directory Federation Services (AD FS) farm on Server1 and to configure device registration. You need to configure Active Directory to support the planned deployment.

Solution: You raise the forest functional level to Windows Server 2012 R2.

Does this meet the goal?

- A. Yes
- B. No

Correct Answer: A

Section: (none)

Explanation

Explanation/Reference:

Explanation:

QUESTION 43

You have a server named Served that runs Windows Server 2016. Server1 will be used as a VPN server. You need to configure Server1 to support VPN Reconnect. Which VPN protocol should you use?

- A. PPTP
- B. L2TP
- C. SSTPD. IKEv2



Correct Answer: D

Section: (none)

Explanation

Explanation/Reference:

Explanation:

QUESTION 44

You have a server named Server1 that runs Windows Server 2016. You install the Docker daemon on Server1. You need to configure the Docker daemon to accept connections only on TCP port 64500. What should you do?

- A. Run the New-**NetFirewallRule** cmdlet
- B. Run the **Set-ServiceWindows PowerShell** cmdlet
- C. Edit the daemon.json file
- D. Edit the configuration json file

Correct Answer: C

Section: (none)

Explanation

Explanation/Reference:

Explanation:

QUESTION 45

Note: This question is part of a series of questions that use the same similar answer choices. An answer choice may be correct for more than one question in the series. Each question is independent of the other questions in this series. Information and details provided in a question apply only to that question.

You have two servers named Server1 and Server2 that run Windows Server 2016. Server1 and Server2 have the Hyper-V server role installed. An iSCSI SAN connects to the network.

You create a LUN on the SAN and configure both servers to connect to the iSCSI target. You create a failover cluster and add Server1 and Server2 to the cluster.

You connect both servers to the iSCSI target and format the shared storage. You need to add the shared storage to the cluster. The solution must ensure that virtual machines running on both nodes can access the shared storage simultaneously.

Which tool should you use?

- A. the **clussvc.exe** command
- B. the **cluster.exe** command
- C. the **Computer Management** console
- D. the **configurehyperv.exe** command
- E. the **Disk Management** console
- F. the **Failover Cluster Manager** console
- G. the **Hyper-V Manager** console
- H. the **Server Manager Desktop** app



Correct Answer: F

Section: (none)

Explanation

Explanation/Reference:

Explanation:

QUESTION 46

You have an Active Directory domain named Contoso.com. The domain contains servers named Server1 and Server2 that run Windows Server 2016. You install the Remote Access server role on Server1. You install the Network Policy and Access Services server role on Server2. You need to configure Server1 to use Server2 as a RADIUS server. What should you do?

- A. From **Routing and Remote Access**, configure the authentication provider.
- B. From the **Connection Manager Administration Kit**, create a **Connection Manager** profile.

- C. From **Server Manager**, create an **Access Policy**.
- D. From **Active Directory Users and Computers**, modify the **Delegation** settings of the Server1 computer account.

Correct Answer: A

Section: (none)

Explanation

Explanation/Reference:

Explanation:

QUESTION 47

You have an application named App1. App1 is distributed to multiple Hyper-V virtual machines in a multitenant environment. You need to ensure that the traffic is distributed evenly among the virtual machines that host App1. What should you include in the environment?

- A. Network Controller and Windows Server Network Load Balancing (NLB) nodes
- B. Network Controller and Windows Server Software Load Balancing (SLB) nodes
- C. a RAS Gateway and Windows Server Network Load Balancing (NLB) nodes
- D. a RAS Gateway and Windows Server Software Load Balancing (SLB) nodes

Correct Answer: D

Section: (none)

Explanation

Explanation/Reference:

Explanation:

QUESTION 48

Note: In this section, you'll see one or more sets of questions with the same scenario and problem. Each question presents a unique solution to the problem, and you must determine whether the solution meets the stated goals. Any of the solutions might solve the problem. It is also possible that none of the solutions solve the problem.

Once you answer a question in this section, you will NOT be able to return to it. As a result, these questions will not appear in the review screen.

Note: This question is part of a series of questions that present the same scenario. Each question in the series contains a unique solution. Determine whether the solution meets the stated goals.

Your network contains an Active Directory domain named contoso.com. The domain contains a DNS server named Server1. All client computers run Windows 10. On Server1, you have the following zone configuration:

ZoneName	ZoneType	IsAutoCreated	IsDsIntegrated	IsReverseLookupZone	IsSign
-----	-----	-----	-----	-----	-----
_msdcs.contoso.com	Primary	False	True	False	False
adatum.com	Forwarder	False	False	False	False
contoso.com	Primary	False	True	False	False
fabrikam.com	Primary	False	False	False	True
TrustAnchors	Primary	False	True	False	False

You have the following subnets defined on Server1.

Name	IPv4Subnet	IPv6Subnet
----	-----	-----
Subnet1	(10.0.0.0/24)	
Subnet2	(10.0.1.0/24)	
Subnet3	(192.168.15.0/24)	
Subnet4	(172.16.1.0/24)	

You need to prevent Server1 from resolving queries from DNS clients located on Subnet4. Server1 must resolve queries from all other DNS clients.
Solution: From Windows PowerShell on Server1, you run the **Export-DnsServerDnsSecPublicKey** cmdlet.

Does this meet the goal?

- A. Yes
- B. No

Correct Answer: B

Section: (none)

Explanation

Explanation/Reference:

Explanation:

QUESTION 49

Note: This question is part of a series of questions that use the same similar answer choices. An answer choice may be correct for more than one question in the series. Each question is independent of the other questions in this series. Information and details provided in a question apply only to that question.

You have a two-node Hyper-V cluster named Cluster1.

As virtual machine named VM1 runs on Cluster1. You need to configure monitoring of VM1.

The solution must move VM1 to a different node if the Print Spooler service on VM1 stops unexpectedly.

Which tool should you use?

- A. the **clussvc.exe** command
- B. the **cluster.exe** command
- C. the Computer Management console
- D. the **configurehyperv.exe** command
- E. the Disk Management console
- F. the Failover Cluster Manager console
- G. the Hyper-V Manager console
- H. the Server Manager Desktop app

Correct Answer: F

Section: (none)

Explanation

Explanation/Reference:

Explanation:

QUESTION 50

You have a failover cluster named Cluster1. A virtual machine named VM1 is a highly available virtual machine that runs on Cluster1. A custom application named App1 runs on VM1. You need to configure monitoring of VM1. If App1 adds an error entry to the Application event log, VM1 should be automatically rebooted and moved to another cluster node. Which tool should you use?

- A. Hyper-V Manager
- B. Failover Cluster Manager
- C. Server Manager
- D. Resource Monitor

Correct Answer: B



<https://vceplus.com/>

Section: (none)

Explanation

Explanation/Reference:

Explanation:

QUESTION 51

Your company has 10 offices. Each office has a local network that contains several Hyper-V hosts that run Windows Server 2016. All of the offices are connected by high speed, low latency WAN links.

You need to ensure that you can use QoS policies for Live Migration traffic between the offices. Which component should you install?

- A. the **Multipath I/O** feature
- B. the **Routing** role service
- C. the **Network Controller** server role
- D. the **Canary Network Diagnostics** feature
- E. the **Data Center Bridging** feature

Correct Answer: CE

Section: (none)

Explanation



Explanation/Reference:

Explanation:

QUESTION 52

Note: This question is part of a series of questions that use the same or similar answer choices. An answer choice may be correct for more than one question in the series. Each question is independent of the other questions in this series. Information and details provided in a question apply only to that question.

You have a Hyper-V host named Server1 that runs Windows Server 2016. You plan to deploy several shielded virtual machines on Server1. You deploy a Host Guardian on a new server.

You need to ensure that Server1 can host shielded virtual machines.

What should you run first?

- A. the **Mount-VHD** cmdlet
- B. the **Diskpart** command
- C. the **Set-VHD** cmdlet
- D. the **Set-VM** cmdlet

- E. the **Set-VMHost** cmdlet
- F. the **Set-VMProcessor** cmdlet
- G. the **Install-WindowsFeature** cmdlet
- H. the **Optimize-VHD** cmdlet

Correct Answer: G

Section: (none)

Explanation

Explanation/Reference:

Explanation:

QUESTION 53

Your network contains an Active Directory domain named contoso.com. The domain contains two servers named Server1 and Server2 that have the same hardware configuration.

You need to asynchronously replicate volume F: from Server1 to Server2. What should you do?

- A. Run **New-SRPartnership** and specify the **RephcationMode** parameter.
- B. Install the **Failover Clustering** feature and create a new cluster resource group.
- C. Install the **Failover Clustering** feature and use **Cluster SharedVolumes (CSV)**.
- D. Run **Set-DfsrServiceConfiguration** and specify the **-RPCPort** parameter.

Correct Answer: A

Section: (none)

Explanation

Explanation/Reference:

Explanation:

QUESTION 54

You have a Nano Server named Nano1. You deploy several containers to Nano1 that use an image named Image1. You need to deploy a new container to Nano1 that uses Image1. What should you run?

- A. the **Install-NanoServerPackage** cmdlet
- B. the **Install-WindowsFeature** cmdlet
- C. the **docker load** command
- D. the **docker run** command

Correct Answer: D

Section: (none)

Explanation

Explanation/Reference:

Explanation:

QUESTION 55

You deploy a Hyper-V server named Served in an isolated test environment. The test environment is prevented from accessing the Internet. Server1 runs the Datacenter edition of Windows Server 2016. You plan to deploy the following guest virtual machines on the server:

Quantity	Operating system	Domain member
10	Windows Server 2012 R2	Yes
4	Windows Server 2016	No
5	Windows Server 2016	Yes

Which activation model should you use for the virtual machines?

- A. Multiple Activation Key (MAK)
- B. Automatic Virtual Machine Activation (AVMA)
- C. Original Equipment Manufacturer (OEM) key
- D. Key Management Service (KMS)



Correct Answer: B

Section: (none)

Explanation

Explanation/Reference:

Explanation:

QUESTION 56

Note: In this section, you'll see one or more sets of questions with the same scenario and problem. Each question presents a unique solution to the problem, and you must determine whether the solution meets the stated goals. Any of the solutions might solve the problem. It is also possible that none of the solutions solve the problem.

Once you answer a question in this section, you will NOT be able to return to it. As a result, these questions will not appear in the review screen.

Note: This question is part of a series of questions that present the same scenario. Each question in the series contains a unique solution. Determine whether the solution meets the stated goals.

Your network contains an Active Directory domain named contoso.com. The domain contains a DNS server named Server1. All client computers run Windows 10. On Server1, you have the following zone configuration:

ZoneName	ZoneType	IsAutoCreated	IsDsIntegrated	IsReverseLookupZone	IsSign
-----	-----	-----	-----	-----	-----
_msdcs.contoso.com	Primary	False	True	False	False
adatum.com	Forwarder	False	False	False	False
contoso.com	Primary	False	True	False	False
fabrikam.com	Primary	False	False	False	True
TrustAnchors	Primary	False	True	False	False

You have the following subnets defined on Server1.

Name	IPv4Subnet	IPv6Subnet
----	-----	-----
Subnet1	(10.0.0.0/24)	
Subnet2	(10.0.1.0/24)	
Subnet3	(192.168.15.0/24)	
Subnet4	(172.16.1.0/24)	

You need to prevent Server1 from resolving queries from DNS clients located on Subnet4. Server1 must resolve queries from all other DNS clients.

Solution: From a Group Policy object (GPO) in the domain, you modify the Network List Manager Policies (NLMP).

Does this meet the goal?

- A. Yes
- B. No

Correct Answer: B

Section: (none)

Explanation

Explanation/Reference:

Explanation:

QUESTION 57

Note: In this section, you'll see one or more sets of questions with the same scenario and problem. Each question presents a unique solution to the problem, and you must determine whether the solution meets the stated goals. Any of the solutions might solve the problem. It is also possible that none of the solutions solve the problem.

Once you answer a question in this section, you will NOT be able to return to it. As a result, these questions will not appear in the review screen.

Note: This question is part of a series of questions that present the same scenario. Each question in the series contains a unique solution. Determine whether the solution meets the stated goals.

Your network contains an Active Directory domain named contoso.com. The domain contains a DNS server named Server1. All client computers run Windows 10. On Server1, you have the following zone configuration:

ZoneName	ZoneType	IsAutoCreated	IsDsIntegrated	IsReverseLookupZone	IsSign
msdcs.contoso.com	Primary	False	True	False	False
adatum.com	Forwarder	False	False	False	False
contoso.com	Primary	False	True	False	False
fabrikam.com	Primary	False	False	False	True
TrustAnchors	Primary	False	True	False	False

You have the following subnets defined on Server1.

Name	IPv4Subnet	IPv6Subnet
Subnet1	(10.0.0.0/24)	
Subnet2	(10.0.1.0/24)	
Subnet3	(192.168.15.0/24)	
Subnet4	(172.16.1.0/24)	

You need to prevent Server1 from resolving queries from DNS clients located on Subnet4. Server1 must resolve queries from all other DNS clients.

Solution: From Windows PowerShell on Server1, you run the **Add-DnsServerTrustAnchor** cmdlet.

Does this meet the goal?

- A. Yes
- B. No

Correct Answer: A

Section: (none)

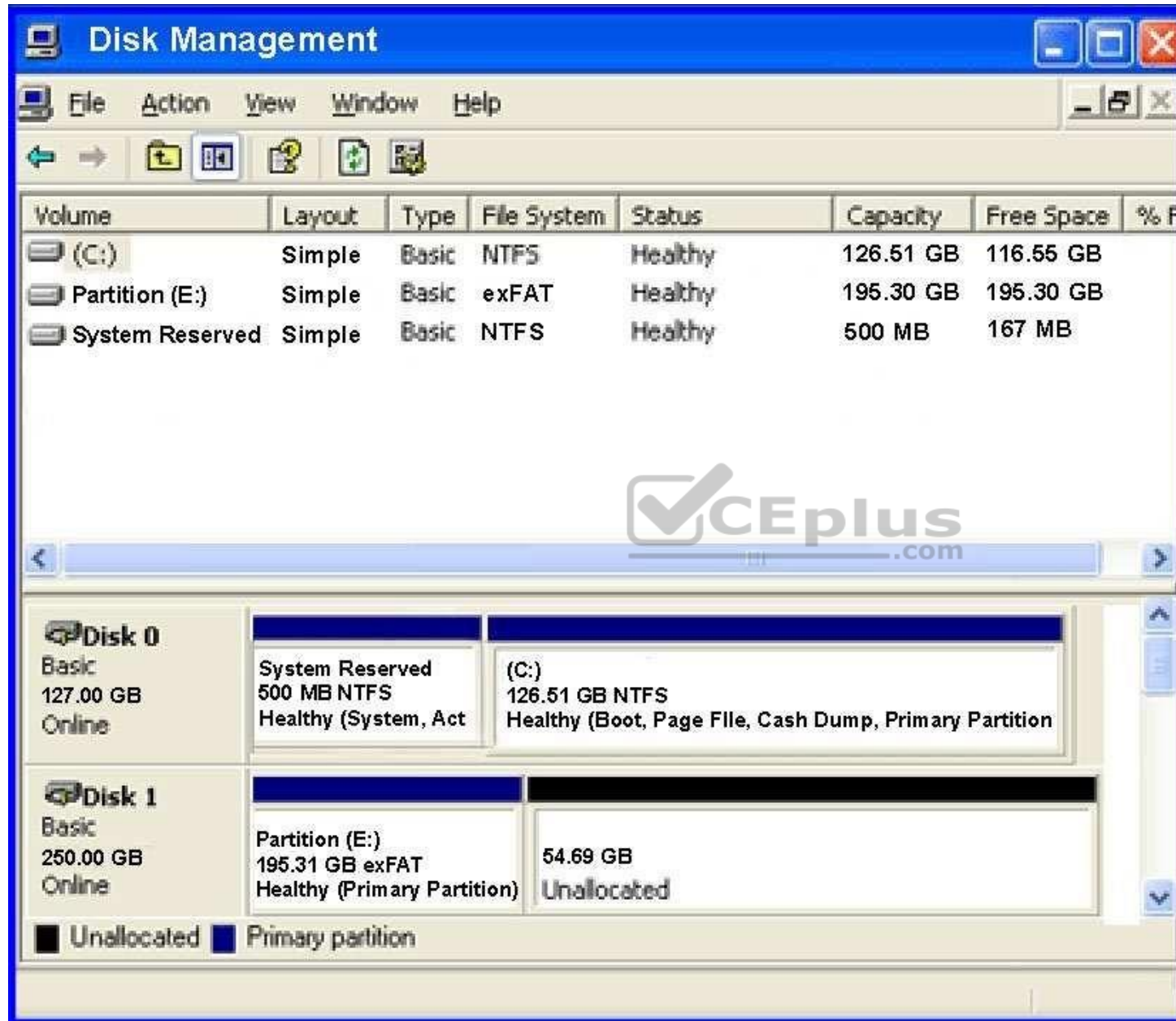
Explanation

Explanation/Reference:

Explanation:

QUESTION 58

You have a server named Server 1 that runs Windows Server 2016. The disk configuration for Server 1 is shown in the exhibit:



You add Server1 to a cluster. You need to ensure that you can use Disk1 (or Storage Spaces Direct). What should you do first?

- A. Delete Partition (E:)
- B. Set Disk1 to offline
- C. Convert Disk 1 to a dynamic disk
- D. Convert Partition (E:) to ReFS

Correct Answer: A

Section: (none)

Explanation

Explanation/Reference:

Explanation:

QUESTION 59

You have a Scale-Out File Server that has a share named Share1. Share1 contains a virtual disk file named Disk1.vxd.

You plan to create a guest failover cluster.

You need to ensure that you can use the virtual disk as a shared virtual disk for the guest failover cluster.

Which cmdlet should you use?

- A. Optimize-VHDSets
- B. Set-VHD
- C. Convert-VHD
- D. Optimize-VHD

Correct Answer: C

Section: (none)

Explanation

Explanation/Reference:

References: <https://4sysops.com/archives/hyper-v-cluster-with-shared-vhd-create-vhdx-files-and-cluster/>

QUESTION 60

Your network contains an Active Directory forest named contoso.com.

The forest contains a member server named Server1 that runs Windows Server 2016. Server1 is located in the perimeter network.

You install the Active Directory Federation Services server role on Server1. You create an Active Directory Federation Services (ADFS) farm by using a certificate that has a subject name of sts.contoso.com.

You need to enable certificate authentication from the Internet on Server1.

Which two inbound TCP ports should you open on the firewall? Each correct answer presents part of the solution.

- A. 389
- B. 443
- C. 3389
- D. 8531
- E. 49443

Correct Answer: BE

Section: (none)

Explanation

Explanation/Reference:

Explanation:

QUESTION 61

Note: In this section, you'll see one or more sets of questions with the same scenario and problem. Each question presents a unique solution to the problem, and you must determine whether the solution meets the stated goals. Any of the solutions might solve the problem. It is also possible that none of the solutions solve the problem.

Once you answer a question in this section, you will NOT be able to return to it. As a result, these questions will not appear in the review screen.

Note: This question is part of a series of questions that present the same scenario. Each question in the series contains a unique solution. Determine whether the solution meets the stated goals.

Your network contains an Active Directory forest named contoso.com. The forest contains a member server named Server1 that runs Windows Server 2016. All domain controllers run Windows Server 2012 R2. Contoso.com has the following configuration:

```
PS C:\> (Get-ADForest). ForestMode Windows2008R2Forest
PS C:\> (Get-ADDomain). DomainMode Windows2008R2Domain
PS C:\>
```

You plan to deploy an Active Directory Federation Services (AD FS) farm on Server1 and to configure device registration. You need to configure Active Directory to support the planned deployment.

Solution: You upgrade a domain controller to Windows Server 2016.

Does this meet the goal?

- A. Yes

B. No

Correct Answer: B

Section: (none)

Explanation

Explanation/Reference:

Explanation:

QUESTION 62

Note: In this section, you'll see one or more sets of questions with the same scenario and problem. Each question presents a unique solution to the problem, and you must determine whether the solution meets the stated goals. Any of the solutions might solve the problem. It is also possible that none of the solutions solve the problem.

Once you answer a question in this section, you will NOT be able to return to it. As a result, these questions will not appear in the review screen.

Note: This question is part of a series of questions that present the same scenario. Each question in the series contains a unique solution. Determine whether the solution meets the stated goals.

Your network contains an Active Directory domain named contoso.com. The domain contains a DNS server named Server1. All client computers run Windows 10. On Server1, you have the following zone configuration:

ZoneName	ZoneType	IsAutoCreated	IsDsIntegrated	IsReverseLookupZone	IsSign
-----	-----	-----	-----	-----	-----
_msdcs.contoso.com	Primary	False	True	False	False
adatum.com	Forwarder	False	False	False	False
contoso.com	Primary	False	True	False	False
fabrikam.com	Primary	False	False	False	True
TrustAnchors	Primary	False	True	False	False

You have the following subnets defined on Server1.

Name	IPv4Subnet	IPv6Subnet
----	-----	-----
Subnet1	(10.0.0.0/24)	
Subnet2	(10.0.1.0/24)	
Subnet3	(192.168.15.0/24)	
Subnet4	(172.16.1.0/24)	

You need to prevent Server1 from resolving queries from DNS clients located on Subnet4. Server1 must resolve queries from all other DNS clients.

Solution: From the Security setting of each zone on Server1, you modify the permissions.

Does this meet the goal?



<https://vceplus.com/>

- A. Yes
- B. No

Correct Answer: B

Section: (none)

Explanation

Explanation/Reference:

Explanation:



QUESTION 63

You have a server named Server1 that runs Windows Server 2016. The Docker daemon runs on Server1.

You need to ensure that members of a security group named Docker Administrators can administer Docker.

What should you do?

- A. Run the **Set-Service** cmdlet.
- B. Modify the Security settings of **Dockerd.exe**.
- C. Edit the Configuration.json file.
- D. Run the sc config command.

Correct Answer: C

Section: (none)

Explanation

Explanation/Reference:

References: <https://docs.microsoft.com/en-us/virtualization/windowscontainers/manage-docker/configure-docker-daemon>

QUESTION 64

Note: This question is part of a series of questions that use the same scenario. For your convenience, the scenario is repeated in each question. Each question presents a different goal and answer choices, but the text of the scenario is exactly the same in each question in this series.

Your network contains an Active Directory domain named contoso.com. The functional level of the forest and the domain is Windows Server 2008 R2. All servers in the domain run Windows Server 2016 Standard. The domain contains 300 client computers that run either Windows 8.1 or Windows 10.

The domain contains nine servers that are configured as shown in the following table.

Name	Configuration	Planned changes
Server1	Domain controller	None
Server2	File server	Run Failover Clustering and Storage Spaces Direct
Server3	File server	Run Failover Clustering and Storage Spaces Direct
Server4	Hyper-V host	Run shielded virtual machines
Server5	Hyper-V host	None
Server6	Member server	Run Active Directory Federation Services (AD FS)
VM1	Virtual machine hosted on Server5	None
VM2	Virtual machine hosted on Server5	None
VM3	Virtual machine hosted on Server5	None

The virtual machines are configured as follows:

- Each virtual machine has one virtual network adapter.
- VM1 and VM2 are part of a Network Load Balancing (NLB) cluster.
- All of the servers on the network can communicate with all of the virtual machines.

You plan to implement nested virtual machines on VM1.

Which two features will you be prevented from using for VM1?

- A. NUMA spanning
- B. live migration
- C. Dynamic Memory
- D. Smart Pathing

Correct Answer: BC

Section: (none)

Explanation

Explanation/Reference:

Explanation:

References:

<https://blogs.technet.microsoft.com/virtualization/2015/10/13/windows-insider-preview-nested-virtualization/>

QUESTION 65

Note: This question is part of a series of questions that use the same scenario. For your convenience, the scenario is repeated in each question. Each question presents a different goal and answer choices, but the text of the scenario is exactly the same in each question in this series.

Your network contains an Active Directory domain named contoso.com. The functional level of the forest and the domain is Windows Server 2008 R2. All servers in the domain run Windows Server 2016 Standard. The domain contains 300 client computers that run either Windows 8.1 or Windows 10.

The domain contains nine servers that are configured as shown in the following table.

Name	Configuration	Planned changes
Server1	Domain controller	None
Server2	File server	Run Failover Clustering and Storage Spaces Direct
Server3	File server	Run Failover Clustering and Storage Spaces Direct
Server4	Hyper-V host	Run shielded virtual machines
Server5	Hyper-V host	None
Server6	Member server	Run Active Directory Federation Services (AD FS)
VM1	Virtual machine hosted on Server5	None
VM2	Virtual machine hosted on Server5	None
VM3	Virtual machine hosted on Server5	None

The virtual machines are configured as follows:

- Each virtual machine has one virtual network adapter.
- VM1 and VM2 are part of a Network Load Balancing (NLB) cluster.

- All of the servers on the network can communicate with all of the virtual machines.

You create a new NLB cluster that contains VM3.

You need to ensure that VM2 can remain in the original cluster and be added to the new cluster.

What should you do first?

- A. Add a new virtual network adapter to VM2.
- B. Install the Web Application Proxy server role on VM2 and VM3.
- C. Modify the default port rule.
- D. Change the cluster operation mode.

Correct Answer: A

Section: (none)

Explanation

Explanation/Reference:

Explanation:

QUESTION 66

HOTSPOT



Note: This question is part of a series of questions that use the same scenario. For your convenience, the scenario is repeated in each question. Each question presents a different goal and answer choices, but the text of the scenario is exactly the same in each question in this series.

Your network contains an Active Directory domain named contoso.com. The functional level of the forest and the domain is Windows Server 2008 R2. All servers in the domain run Windows Server 2016 Standard. The domain contains 300 client computers that run either Windows 8.1 or Windows 10.

The domain contains nine servers that are configured as shown in the following table.

Name	Configuration	Planned changes
Server1	Domain controller	None
Server2	File server	Run Failover Clustering and Storage Spaces Direct
Server3	File server	Run Failover Clustering and Storage Spaces Direct
Server4	Hyper-V host	Run shielded virtual machines
Server5	Hyper-V host	None
Server6	Member server	Run Active Directory Federation Services (AD FS)
VM1	Virtual machine hosted on Server5	None
VM2	Virtual machine hosted on Server5	None
VM3	Virtual machine hosted on Server5	None

The virtual machines are configured as follows:

- Each virtual machine has one virtual network adapter.
- VM1 and VM2 are part of a Network Load Balancing (NLB) cluster.
- All of the servers on the network can communicate with all of the virtual machines.

For VM1 and VM2, you plan to use live migration between Server4 and Server5.

You need to ensure that when the virtual machines migrate, they maintain connectivity to the network.

Which virtual switch names and connection types should you use on each server? To answer, select the appropriate options in the answer area.

Hot Area:

Answer Area

Virtual switch connection type on Server4:

	▼
External network	
Internal network	
Private network	

Virtual switch connection type on Server5:

	▼
External network	
Internal network	
Private network	

Virtual switch name on Server4:

	▼
External on Server4	
Network switch	
Server4	

Virtual switch name on Server5:

	▼
External on Server5	
Network switch	
Server5	

Correct Answer:

Answer Area

Virtual switch connection type on Server4:

▼
External network
Internal network
Private network

Virtual switch connection type on Server5:

▼
External network
Internal network
Private network

Virtual switch name on Server4:

▼
External on Server4
Network switch
Server4

Virtual switch name on Server5:

▼
External on Server5
Network switch
Server5

Section: (none)

Explanation

Explanation/Reference:

QUESTION 67

You have a Windows container host named Server1.

On Server1, you create a container named Container1.

You need to mount C:\ContainerFiles from Server1 to Container1.

What should you run?

- A. **dockerd --storage-opt dm.mountopt=ContainerFiles**
- B. **docker run -it -v c:\ContainerFiles Container1**
- C. **dockerd --storage-opt dm.datadev=/c/ContainerFiles**
- D. **docker run -it -vc:\ContainerFiles:c:\ContainerFiles Container1**

Correct Answer: D

Section: (none)

Explanation

Explanation/Reference:

Explanation:

QUESTION 68

You have a server named Server1 that runs Windows Server 2016. The Docker daemon runs on Server1.

You need to ensure that members of a security group named Docker Administrators can administer Docker.

What should you do?

- A. Run the **sc privsc** ommand.
- B. Edit the Daemon.json file.
- C. Add **Docker Administrators** to the local Administrators group.
- D. Edit the Configuration.json file.

Correct Answer: C

Section: (none)

Explanation

Explanation/Reference:

Explanation:

QUESTION 69

HOTSPOT

You have a Hyper-V host named Server1 that runs Windows Server 2016.

You deploy a virtual machine named VM1 to Server1. VM1 runs Windows Server 2016.

You need to ensure that you can install the Hyper-V server role on VM1.

Which command should you run? To answer, select the appropriate options in the answer area.

Hot Area:

Answer Area

▼
Enable-VMIntegrationService
Set-VM
Set-VM BIOS
Set-VMFirmware
Set-VMHost
Set-VMProcessor

▼
SERVER1 - EnableEnhancedSessionMode \$true
SERVER1 - EnableSecureBoot on
SERVER1 - ExposeVirtualizationExtensions \$true
VM1 - EnableEnhancedSessionMode \$true
VM1 - EnableSecureBoot on
VM1 - ExposeVirtualizationExtensions \$true

Correct Answer:

Answer Area

▼
Enable-VMIntegrationService
Set-VM
Set-VM BIOS
Set-VMFirmware
Set-VMHost
Set-VMProcessor

▼
SERVER1 - EnableEnhancedSessionMode \$true
SERVER1 - EnableSecureBoot on
SERVER1 - ExposeVirtualizationExtensions \$true
VM1 - EnableEnhancedSessionMode \$true
VM1 - EnableSecureBoot on
VM1 - ExposeVirtualizationExtensions \$true

Section: (none)

Explanation

Explanation/Reference:

Explanation:

References: <https://docs.microsoft.com/en-us/virtualization/hyper-v-on-windows/user-guide/nested-virtualization>

QUESTION 70
HOTSPOT

You have four Hyper-V hosts named Server1, Server2, Server3 and Server4 that run Windows Server 2016. The hosts are nodes in a failover cluster.

A virtual machine named VM1 is running in the failover cluster. The role for VM1 is configured as shown in the following exhibit.



```

Administrator: Windows PowerShell
PS C:\> Get-ClusterGroup vm1 | fl =

AntiAffinityClassNames : {}
AutoFailbackType       : 1
ColdStartSetting       : 0
Cluster                : Cluster1
DefaultOwner           : 1
Description             :
GroupType              : VirtualMachine
FailoverPeriod         : 1
FailoverThreshold      : 2
FailbackWindowEnd      : 6
FailbackWindowStart   : 20
IsCoreGroup            : False
Name                   : vm1
OwnerNode              : Server1
PersistentState        : 1
PreferredSite          : {}
Priority               : 2000
ResiliencyPeriod       : 4294967295
State                  : Online
StatusInformation      : 0
Id                     : 5304f522-4fbf-4d06-8fb6-c6b0e2c289e7

PS C:\>

```

Use the drop-down menus to select the answer choice that completes each statement based on the information presented in the graphic.

Hot Area:

Answer Area

If VM1 fails three time in one hour, VM1 will **[answer choice]**.

	▼
fail over to a different node	
remain in a failed state	
restart on the same node	

If VM1 fails over to a different node at 14:00, VM1 will fail back to the preferred node **[answer choice]**.

	▼
as soon as possible	
automatically at 20:00	
if the current node is highly loaded	
only when triggered manually	

Correct Answer:



Answer Area

If VM1 fails three time in one hour, VM1 will **[answer choice]**.

	▼
fail over to a different node	
remain in a failed state	
restart on the same node	

If VM1 fails over to a different node at 14:00, VM1 will fail back to the preferred node **[answer choice]**.

	▼
as soon as possible	
automatically at 20:00	
if the current node is highly loaded	
only when triggered manually	

Section: (none)

Explanation

Explanation/Reference:

Explanation:

References: [https://msdn.microsoft.com/en-us/library/aa369665\(v=vs.85\).aspx](https://msdn.microsoft.com/en-us/library/aa369665(v=vs.85).aspx)

QUESTION 71

DRAG DROP

You have a file server named Server1 that runs Windows Server 2016.

You need to create a report that lists all of the share permissions assigned to the security principals on Server1.

How should you complete the command? To answer, drag the appropriate cmdlets to the correct targets. Each cmdlet may be used once, more than once, or not at all. You may need to drag the split bar between panes or scroll to view content.

Select and Place:

Cmdlets

Get-Acl

Get-SmbClientConfiguration

Get-SmbShare

Set-SmbPathAcl

Get-Credential

Get-SmbDelegation

Get-SmbShareAccess

Answer Area

Cmdlet

Cmdlet

Correct Answer:

Cmdlets

Get-Acl

Get-SmbClientConfiguration

Set-SmbPathAcl

Get-Credential

Get-SmbDelegation

Answer Area

Get-SmbShare

Get-SmbShareAccess

Section: (none)

Explanation

Explanation/Reference:

QUESTION 72

HOTSPOT

You have a Windows Server 2016 failover cluster that contains two servers named Server1 and Server2.

You need to apply patches to Server1.

Which two commands should you run before you apply the patches? To answer, select the appropriate options in the answer area.

Hot Area:

Answer Area

First command:

	▼
Invoke-Command Server2 { Start-ClusterGroup }	
Invoke-Command Server2 { Start-ClusterResource }	
Move-ClusterGroup -Node Server2	
Set-ClusterOwnerNode -Owner Server2	
Set-ClusterParameter -Name Owner -Value Server2	

Second command:

	▼
Stop-ClusterGroup	
Stop-ClusterResource	
Suspend-ClusterNode	
Suspend-ClusterResource	

Correct Answer:

Answer Area

First command:

	▼
Invoke-Command Server2 { Start-ClusterGroup }	
Invoke-Command Server2 { Start-ClusterResource }	
Move-ClusterGroup -Node Server2	
Set-ClusterOwnerNode -Owner Server2	
Set-ClusterParameter -Name Owner -Value Server2	

Second command:

	▼
Stop-ClusterGroup	
Stop-ClusterResource	
Suspend-ClusterNode	
Suspend-ClusterResource	

Section: (none)

Explanation

Explanation/Reference:

QUESTION 73

You have a Hyper-V host that runs Windows Server 2016.

You need to identify the amount of processor resources consumed by Hyper-V and virtual machines.

Which counter should you use from Performance Monitor?

- A. \Hyper-V Hypervisor\Logical Processor
- B. \Hyper-V HypervisorRoot Virtual Processor(_Total)\% Guest Run Time
- C. \Hyper-V Hypervisor Virtual Processor(_Total)\% Hypervisor Run Time
- D. \Hyper-V Hypervisor Virtual Processor(_Total)\% Total Run Time
- E. \Hyper-V Hypervisor Logical Processor(_Total)\% Total Run Time

Correct Answer: A

Section: (none)

Explanation

Explanation/Reference:

Explanation:

References: [https://msdn.microsoft.com/en-us/library/cc768535\(v=bts.10\).aspx](https://msdn.microsoft.com/en-us/library/cc768535(v=bts.10).aspx)

QUESTION 74

HOTSPOT

Your network contains an Active Directory domain named Adatum.com. The domain contains two servers named Server1 and Server2 that run Windows Server 2016. The domain contains three users named User1, User2, and User3.

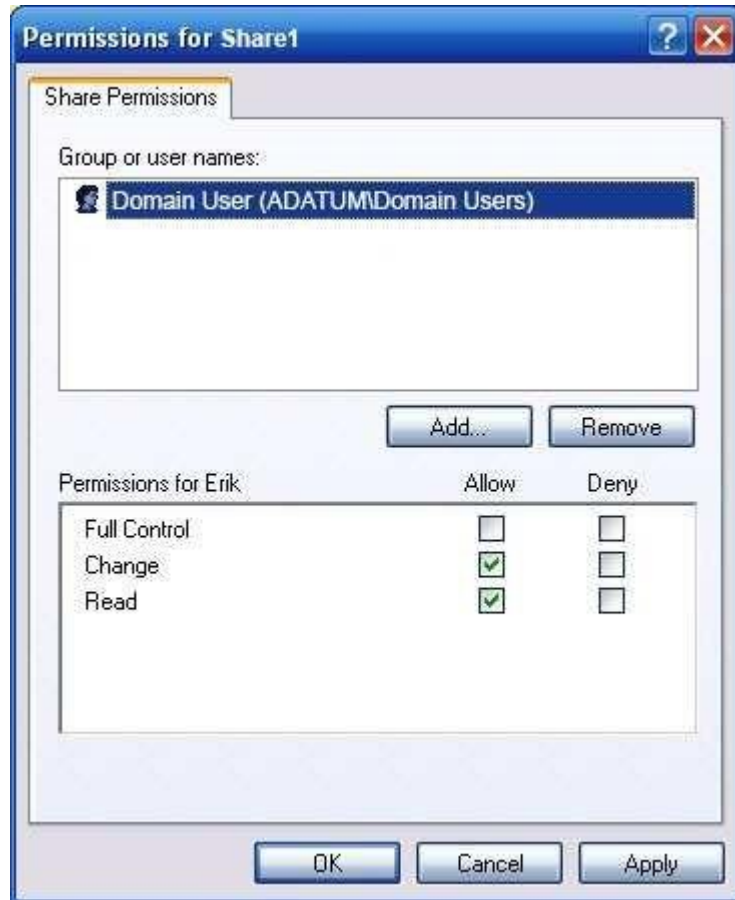
Server1 has a share named Share1 that has the following configurations.



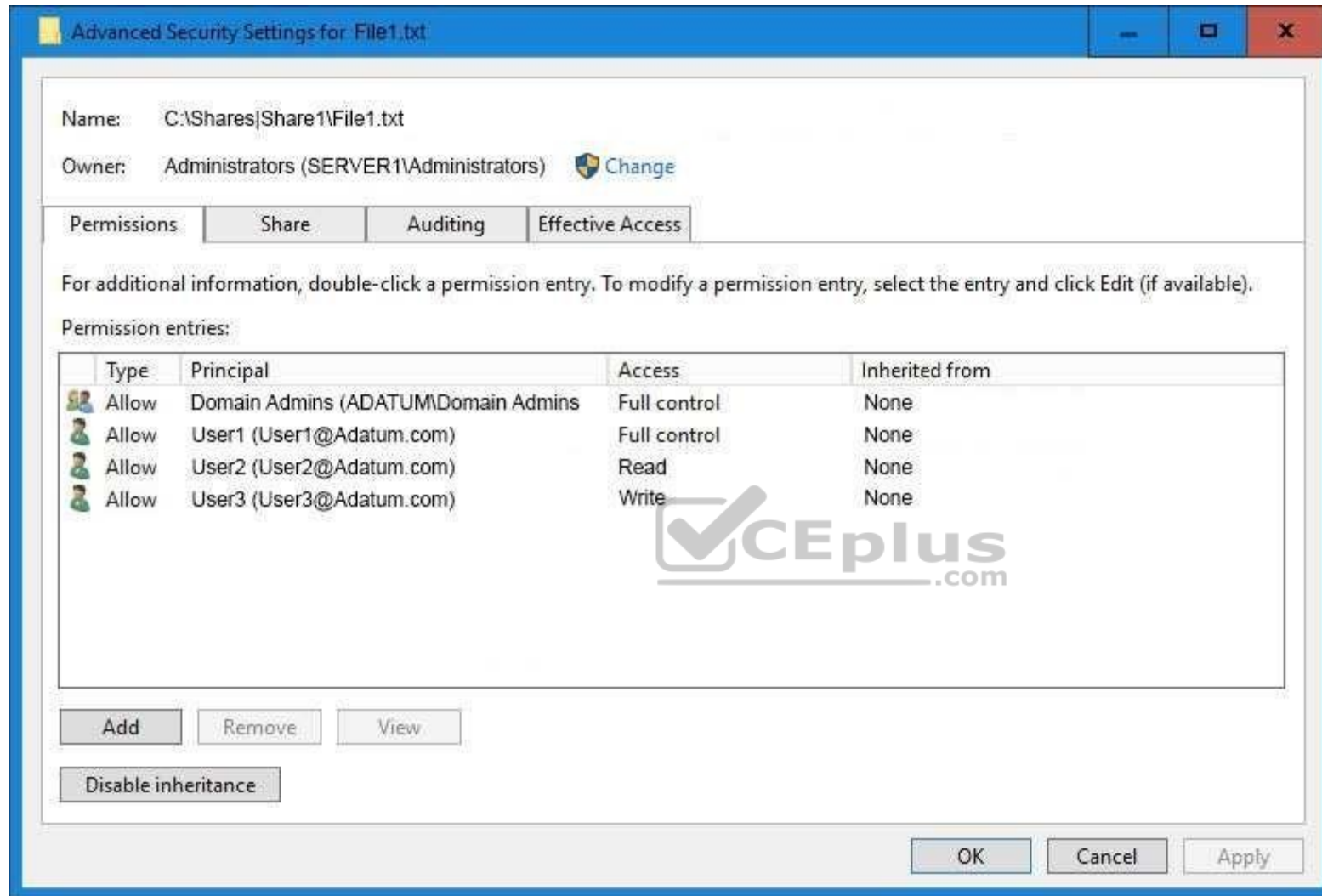
```

PresetPathAcl      : System.Security.AccessControl.DirectorySecurity
ShareState         : Online
AvailabilityType   : NonClustered
ShareType          : FileSystemDirectory
FolderEnumerationMode : AccessBased
CachingMode        : Manual
SmbInstance        : Default
CATimeout          : 0
ConcurrentUserLimit : 0
ContinuouslyAvailable : False
CurrentUsers        : 0
Description         :
EncryptData         : False
Name                : Share1
Path                : C:\Shares\Share1
Scoped              : False
ScopeName           : *
SecurityDescriptor  : O:BAG:DUD:(A;OICI;FA;;;WD)
ShadowCopy          : False
Special             : False
Temporary           : False
Volume              : \\?\Volume{d80578cf-0000-0000-0000-501f00000000}\
PSComputerName      :
CimClass            : ROOT/Microsoft/Windows/SMB:MSFT_SmsShare
CimInstanceProperties : {AvailabilityType, CachingMode, CATimeout, ConcurrentUserLimit...}
CimSystemProperties  : Microsoft.Management.Infrastructure.CimSystemProperties
  
```

The share permissions for Share1 are configured as shown in the Share1 exhibit. (Click the Exhibit button.)



Share1 contains a file named File1.txt. The Advanced Security Settings for File1.txt are configured as shown in the File1.txt exhibit. (Click the Exhibit button.)



For each of the following statement, select Yes if the statement is true. Otherwise, select No.

Hot Area:

Answer Area

Statement	Yes	No
When User1 navigates to \\Server1\Share1\, the user can take ownership of File1.txt.	<input type="radio"/>	<input type="radio"/>
When User2 navigates to \\Server1\Share1\, the user will see File1.txt	<input type="radio"/>	<input type="radio"/>
When User3 navigates to \\Server1\Share1\, the user will see File1.txt	<input type="radio"/>	<input type="radio"/>



Correct Answer:

Answer Area

Statement	Yes	No
When User1 navigates to \\Server1\Share1\, the user can take ownership of File1.txt.	<input type="radio"/>	<input checked="" type="radio"/>
When User2 navigates to \\Server1\Share1\, the user will see File1.txt	<input checked="" type="radio"/>	<input type="radio"/>
When User3 navigates to \\Server1\Share1\, the user will see File1.txt	<input checked="" type="radio"/>	<input type="radio"/>

Section: (none)

Explanation

Explanation/Reference:

QUESTION 75

You have a server named Server1 that runs Windows Server 2016.

The disks on Server1 are configured as shown in the following table.

Volume	Type	File System	Capacity
C:	Attached locally	NTFS	150 GB
D:	Attached locally	exFAT	100 GB
E:	Attached locally	NTFS	20 GB
F:	Attached locally	ReFS	1 TB
G:	iSCSI LUN	NTFS	2 TB

Windows Server 2016 is installed in C:\Windows.

On which two volumes can you enable data deduplication? Each correct answer presents a complete solution.

- A. C:
- B. D:
- C. E:D. F:
- E. G:

Correct Answer: CE

Section: (none)

Explanation

Explanation/Reference:

Explanation:

QUESTION 76

HOTSPOT

You have a server that runs Windows Server 2016.

You run the commands shown in the following output.

```
PS G:\> Get-DedupVolume | fl

Volume                : G:
VolumeId              : \\?\Volume{2efa2f6e-db4a-4bb1-aal5-3lae8b073dl6}\
Enabled               : True
UsageType             : Default
DataAccessEnabled     : True
Capacity              : 923.87 GB
FreeSpace             : 393.98 GB
UsedSpace             : 529.89 GB
UnoptimizedSize       : 1008.7 GB
SavedSpace            : 478.82 GB
SavingRate            : 47 %
MinimumFileAgeDays    : 3
MinimumFileSize       : 32768
NoCompress            : False
ExcludeFolder         : 
ExcludeFileType       : 
ExcludeFileTypeDefault : {edb, jrs}
NoCompressionFileType : {asf, mov, wma, wmv...}
ChunkRedundancyThreshold : 100
Verify               : False
OptimizeInUseFiles    : False
OptimizePartialFiles  : False
```

```
PS G:\> Get-Date
Tuesday, June 21, 2016 5:29:58 PM
```

```
PS G:\DC01> dir | select Mode,LastWriteTime,Length,Name | ft -AutoSize
```

Mode	LastWriteTime	Length	Name
d----	2/18/2015 11:54:56 AM		Snapshots
d----	2/18/2015 12:11:42 PM		Virtual Machines
-a---	6/21/2016 5:27:40 PM	51539608064	DC01.vhd
-a---	6/18/2016 7:00:00 AM	12400	Readme.txt
-a---	1/5/2015 7:00:00 AM	3939235840	Software.iso

For each of the following statements, select Yes if the statement is true. Otherwise, select No.

Hot Area:

Answer Area

Statements	Yes	No
DC01.vhd will be processed by deduplication.	<input type="radio"/>	<input type="radio"/>
Readme.txt will be processed by deduplication.	<input type="radio"/>	<input type="radio"/>
Software.iso will be processed by deduplication.	<input type="radio"/>	<input type="radio"/>

Correct Answer:

Answer Area



Statements	Yes	No
DC01.vhd will be processed by deduplication.	<input type="radio"/>	<input checked="" type="radio"/>
Readme.txt will be processed by deduplication.	<input type="radio"/>	<input checked="" type="radio"/>
Software.iso will be processed by deduplication.	<input checked="" type="radio"/>	<input type="radio"/>

Section: (none)
Explanation

Explanation/Reference:
QUESTION 77

You have two servers named Server1 and Server2 that run Windows Server 2016.

Server1 contains a volume named Volume1.

You implement a Storage Replica that replicates the contents of Volume1 from Server1 to Server2.

Server1 fails.

From Server2, you need to ensure that you can access the contents of Volume1.

What should you run?

- A. **Update-StoragePool**
- B. **Set-SRPartnership**
- C. **vssadmin revert shadow**
- D. **Clear-FileStorageTier**

Correct Answer: B

Section: (none)

Explanation



Explanation/Reference:

Explanation:

References: <https://docs.microsoft.com/en-us/windows-server/storage/storage-replica/server-to-server-storage-replication>

QUESTION 78

HOTSPOT

You plan to deploy three servers named Server1, Server2, and Server3 that will run Windows Server 2016. The servers will have the following disk configurations:

- Server1 will have a C: drive of 2 TB.
- Server2 will have two disks. The C: drive will be 2 TB. The D: drive will be 1TB. D: must support file system-based



<https://vceplus.com/>

compression.

- Server3 will have two disks. The C: drive will be 2 TB. The D: drive will be 1TB and must support file-system based quotas.

Which file system can you use for each drive? To answer, select the appropriate options in the answer area.

Hot Area:

Answer Area

C: on all servers:

	▼
NTFS only	
ReFS only	
Either NTFS or ReFS	

D: on Server2:

	▼
NTFS only	
ReFS only	
Either NTFS or ReFS	

D: on Server3:

	▼
NTFS only	
ReFS only	
Either NTFS or ReFS	

Correct Answer:

Answer Area

C: on all servers:

	▼
NTFS only	
ReFS only	
Either NTFS or ReFS	

D: on Server2:

	▼
NTFS only	
ReFS only	
Either NTFS or ReFS	

D: on Server3:

	▼
NTFS only	
ReFS only	
Either NTFS or ReFS	

Section: (none)

Explanation

Explanation/Reference:

QUESTION 79

HOTSPOT

You are deploying Network Load Balancing (NLB) to three web servers named Server1, Server2, and Server3. The web servers have the following IP addresses: ▪
 Server1: 192.168.2.101
 ▪ Server2: 192.168.2.102 ▪
 Server3: 192.168.2.103

The IP address used by NLB is 192.168.2.120.

Which IP address or addresses will be configured on each server? To answer, select the appropriate options in the answer area.

Hot Area:

Answer Area

Server1:

	▼
192.168.2.101 only	
192.168.2.120 only	
192.168.2.101 and 192.168.2.120 only	
192.168.2.101, 192.168.2.102, and 192.168.2.103 only	
192.168.2.101, 192.168.2.102, 192.168.2.103 and 192.168.2.120	

Server2:

	▼
192.168.2.102 only	
192.168.2.120 only	
192.168.2.102 and 192.168.2.120 only	
192.168.2.101, 192.168.2.102, and 192.168.2.103 only	
192.168.2.101, 192.168.2.102, 192.168.2.103 and 192.168.2.120	

Server3:

	▼
192.168.2.103 only	
192.168.2.120 only	
192.168.2.103 and 192.168.2.120 only	
192.168.2.101, 192.168.2.102, and 192.168.2.103 only	
192.168.2.101, 192.168.2.102, 192.168.2.103 and 192.168.2.120	

Correct Answer:

Answer Area

Server1:

	▼
192.168.2.101 only	
192.168.2.120 only	
192.168.2.101 and 192.168.2.120 only	
192.168.2.101, 192.168.2.102, and 192.168.2.103 only	
192.168.2.101, 192.168.2.102, 192.168.2.103 and 192.168.2.120	

Server2:

	▼
192.168.2.102 only	
192.168.2.120 only	
192.168.2.102 and 192.168.2.120 only	
192.168.2.101, 192.168.2.102, and 192.168.2.103 only	
192.168.2.101, 192.168.2.102, 192.168.2.103 and 192.168.2.120	

Server3:

	▼
192.168.2.103 only	
192.168.2.120 only	
192.168.2.103 and 192.168.2.120 only	
192.168.2.101, 192.168.2.102, and 192.168.2.103 only	
192.168.2.101, 192.168.2.102, 192.168.2.103 and 192.168.2.120	

Section: (none)

Explanation

Explanation/Reference:

QUESTION 80

HOTSPOT

You have a Windows Server 2016 failover cluster that has a cluster network named ClusterNetwork1.

You need to ensure that ClusterNetwork1 is enabled for cluster communication only.

What command should you run? To answer, select the appropriate options in the answer area.

Hot Area:

Answer Area

(<div>▼</div>	ClusterNetwork1).	<div>▼</div>	=1
	Get-ClusterNetwork		ID	
	Get-ClusterResource		Metric	
	Set-ClusterParameter		Role	
	Update-ClusterIPResource		State	

Correct Answer:

Answer Area

(<div>▼</div>	ClusterNetwork1).	<div>▼</div>	=1
	Get-ClusterNetwork		ID	
	Get-ClusterResource		Metric	
	Set-ClusterParameter		Role	
	Update-ClusterIPResource		State	

Section: (none)

Explanation

Explanation/Reference:

QUESTION 81

You have a Windows Server 2016 failover cluster named Cluster1 that contains three nodes named Server1, Server2, and Server3. Each node hosts several virtual machines. The virtual machines are configured to fail over to another node in Cluster1 if the hosting node fails.

You need to ensure that if the Cluster service fails on one of the nodes, the virtual machine of that node will fail over immediately.

Which setting should you configure?

- A. FailureConditionLevel
- B. QuarantineDuration
- C. ResiliencyPeriod
- D. ResiliencyLevel

Correct Answer: D

Section: (none)

Explanation

Explanation/Reference:

Explanation:

References: <https://blogs.msdn.microsoft.com/clustering/2015/06/03/virtual-machine-compute-resiliency-in-windows-server-2016/>

QUESTION 82

HOTSPOT

You have a four-node Hyper-V cluster named Cluster1.

A virtual machine named VM1 runs on Cluster1. VM1 has a network adapter that connects to a virtual switch named Network1.

You need to prevent a network disconnection on VM1 from causing VM1 to move to another cluster node.

What command should you run? To answer, select the appropriate options in the answer area.

Hot Area:

Answer Area

Remove-ClusterVMMonitoredItem -VirtualMachine VM1
Set-VM -VMName VM1
Set-VMNetworkAdapter -VMName VM1
Set-VMSwitch -Name Network1

-EventSource Network
-lovInterruptModeration Off
-lovWeight 1
-NotMonitoredInCluster \$true
-RouterGuard Off

Correct Answer:

Answer Area

Remove-ClusterVMMonitoredItem -VirtualMachine VM1	-EventSource Network
Set-VM -VMName VM1	-lovInterruptModeration Off
Set-VMNetworkAdapter -VMName VM1	-lovWeight 1
Set-VMSwitch -Name Network1	-NotMonitoredInCluster \$true
	-RouterGuard Off

Section: (none)

Explanation

Explanation/Reference:

QUESTION 83

Note: This question is part of a series of questions that use the same or similar answer choices. An answer choice may be correct for more than one question in the series. Each question is independent of the other questions in this series. Information and details provided in a question apply only to that question.

You have a Hyper-V host named Server1 that runs Windows Server 2016. Server1 has a virtual machine that uses a virtual hard disk (VHD) named disk1.vhdx.

You receive the following warning message from Event Viewer: "One or more virtual hard disks have a physical sector size that is smaller than the physical sector size of the storage on which the virtual hard disk file is located."

You need to resolve the problem that causes the warning message.

What should you run?

- A. the **Mount-VHD** cmdlet
- B. the **Diskpart** command
- C. the **Set-VHD** cmdlet
- D. the **Set-VM** cmdlet
- E. the **Set-VMHost** cmdlet
- F. the **Set-VMProcessor** cmdlet
- G. the **Install-WindowsFeature** cmdlet
- H. the **Optimize-VHD** cmdlet

Correct Answer: C

Section: (none)

Explanation

Explanation/Reference:

Explanation:

References: [https://technet.microsoft.com/en-us/library/hh848561\(v=ws.630\).aspx](https://technet.microsoft.com/en-us/library/hh848561(v=ws.630).aspx)

QUESTION 84

DRAG DROP

You have a server named Server1 that runs Windows Server 2016.

On Server1, you create a Nano Server image named Disk1.vhdx.

You need to start Server1 by using Disk1.vhdx.

Which three actions should you perform in sequence? To answer, move the appropriate actions from the list of actions to the answer area and arrange them in the correct order.

Select and Place:



Actions

Restart Server1.

Run the **bcdboot.exe** command.

Run the **bootcfg.exe** command.

Run the **Edit-NanoServerImage** cmdlet.

Mark a partition as active.

Mount Disk1.vhdx.

Answer Area



Correct Answer:

Actions

Run the **bcdboot.exe** command.

Run the **Edit-NanoServerImage** cmdlet.

Mark a partition as active.

Answer Area

Mount Disk1.vhdx.

Run the **bootcfg.exe** command.

Restart Server1.

Section: (none)

Explanation

Explanation/Reference:

QUESTION 85

You deploy two servers that run Windows Server 2016.

You install the Failover Clustering feature on both servers.

You need to create a workgroup cluster.

What should you do?

- A. Configure both of the server to be in a workgroup named Workgroup. Configure the Cluster Service to log on as Network Service. Run the **New-Cluster** cmdlet and specify an administrative access point of **None**.
- B. Create matching local administrative accounts on both of the servers. Assign the same primary DNS suffix to both of the servers. Run the **New-Cluster** cmdlet and specify an administrative access point of **DNS**.
- C. Configure both of the server to be in a workgroup named Workgroup. Configure the Cluster Service to log on as Network Service. Run the **New-Cluster** cmdlet and specify an administrative access point of **DNS**.
- D. Create matching local administrative accounts on both of the servers. Assign the same primary DNS suffix to both of the servers. Run the **New-Cluster** cmdlet and specify an administrative access point of **None**

Correct Answer: B

Section: (none)

Explanation

Explanation/Reference:

Explanation:

References: <https://rlevchenko.com/2015/09/07/workgroup-and-multi-domain-clusters-in-windows-server-2016/>

QUESTION 86

You have two Hyper-V hosts named Server1 and Server2 that run Windows Server 2016. The hosts are nodes in failover cluster.

You have a virtual machine named VM1. VM1 connects to a virtual switch named vSwitch1.

You discover that VM1 automatically live migrates when vSwitch temporarily disconnects.

You need to prevent VM1 from being live migrated when vSwitch1 temporarily disconnects.

What should you do?

- A. Run the **Set-VMNetworkAdapter** cmdlet and set StormLimit to **0**.
- B. From the network adapter setting of VM1, disable the Heartbeat integration service.
- C. Run the **Set-VMNetworkAdapter** cmdlet and set IsManagementOS to **False**.
- D. From the network adapter setting of VM1, disable the Protected network setting.

Correct Answer: D

Section: (none)

Explanation

Explanation/Reference:

Explanation:

QUESTION 87

You have a container host named Server1 that runs Windows Server 2016.

You need to start a Hyper-V container on Server1.

Which parameter should you use with the **docker run** command?

- A. ***--isolation***
- B. ***--expose***
- C. ***--runtime***
- D. ***--entrypoint***
- E. ***--privileged***

Correct Answer: A

Section: (none)

Explanation

Explanation/Reference:

Explanation:

**QUESTION 88**

You have three Hyper-V hosts named Server1, Server2, and Server3 that run Windows Server 2016. The servers are nodes in a failover cluster.

The failover cluster contains two virtual machines named VM1 and VM2. The roles for VM1 and VM2 have the following configurations.

```
PS C:\> Get-ClusterGroup vm1,vm2 | fl *
```

```
AntiAffinityClassNames : {}
AutoFailbackType        : 0
ColdStartSetting        : 0
Cluster                 : Cluster1
DefaultOwner            : 1
Description              :
GroupType               : VirtualMachine
FailoverPeriod          : 6
FailoverThreshold       : 4294967295
FailbackWindowEnd       : 4294967295
FailbackWindowStart     : 4294967295
IsCoreGroup             : False
Name                    : vm1
OwnerNode               : Server1
PersistentState         : 1
PreferredSite           : {}
Priority                 : 0
ReliliencyPeriod        : 429467295
State                   : Online
StatusInformation       : 0
Id                      : d02c87d1-8alc-4ffb-b87d-adf059416f25
```

```
AntiAffinityClassNames : {}
AutoFailbackType        : 0
ColdStartSetting        : 0
Cluster                 : Cluster1
DefaultOwner            : 1
Description              :
GroupType               : VirtualMachine
FailoverPeriod          : 6
FailoverThreshold       : 4294967295
FailbackWindowEnd       : 4294967295
FailbackWindowStart     : 4294967295
IsCoreGroup             : False
Name                    : vm2
OwnerNode               : Server1
PersistentState         : 1
PreferredSite           : {}
Priority                 : 3000
ResiliencyPeriod        : 4294967295
State                   : Online
StatusInformation       : 0
Id                      : ab38e657-bfcf-463d-a88b-d4e99aff4ef1
```

All of the nodes in the failover cluster have sufficient resources to run VM1 and VM2 concurrently.

VM1 and VM2 fail over to Server3.

What is the state of each virtual machine after the failover?

- A. Both VM1 and VM2 are stopped.
- B. Both VM1 and VM2 are running.
- C. VM1 is stopped and VM2 is running.
- D. VM1 is stopped and VM2 is paused.

Correct Answer: C

Section: (none)

Explanation

Explanation/Reference:

Explanation:

References: [https://msdn.microsoft.com/en-us/library/jj151956\(v=vs.85\).aspx](https://msdn.microsoft.com/en-us/library/jj151956(v=vs.85).aspx)



QUESTION 89

Your network contains an Active Directory domain named contoso.com. The domain contains two servers named Server1 and Server2 that run Windows Server 2016.

Each server has an operating system disk and four data disks. All of the disks are locally attached SATA disks. Each disk is a basic disk, is initialized as an MBR disk, and has a single NTFS volume.

You plan to implement Storage Spaces Direct by using the data disks on Server1 and Server2.

You need to prepare the data disks for the Storage Spaces Direct implementation.

What should you do?

- A. Format the volumes on the data disks as exFAT.
- B. Initialize the data disks as GPT disks and create an ReFS volume on each disk.
- C. Convert the data disks to dynamic disks.
- D. Delete the volumes from the data disks.

Correct Answer: D

Section: (none)

Explanation

Explanation/Reference:

Explanation:

QUESTION 90

DRAG DROP

You have a Hyper-V host named Server1 that runs Windows Server 2016.

The installation source files for Windows Server 2016 are located in D:\Source.

You need to create a Nano Server image.

Which cmdlets should you run? To answer, drag the appropriate cmdlets to the correct targets. Each cmdlet may be used once, more than once, or not at all. You may need to drag the split bar between panes or scroll to view content.

Select and Place:

Cmdlets	Answer Area
Add-WindowsImage	<div> <div>First cmdlet to run:</div> <div>cmdlet</div> </div> <div> <div>Second cmdlet to run:</div> <div>cmdlet</div> </div>
Import-Module	
Install-Module	
New-NanoServerImage	
New-WindowsCustomImage	

Correct Answer:

Cmdlets

Add-WindowsImage

Install-Module

New-WindowsCustomImage

Answer Area

First cmdlet to run:

Import-Module

Second cmdlet to run:

New-NanoServerImage

Section: (none)

Explanation

Explanation/Reference:



QUESTION 91

Your network contains a new Active Directory domain named contoso.com.

You have a security policy that states that new servers should run Nano Server whenever possible.

Which server role can be deployed on a Nano Server?

- A. **Active Directory Certificate Services**
- B. **DHCP Server**
- C. **Remote Desktop Services**
- D. **DNSServer**

Correct Answer: D

Section: (none)

Explanation

Explanation/Reference:

Explanation:

QUESTION 92**HOTSPOT**

Your network contains an Active Directory forest named contoso.com.

The forest contains an Active Directory Federation Services (AD FS) farm.

You install Windows Server 2016 on a server named Server2.

You need to configure Server2 as a node in the federation server farm.

Which cmdlets should you run? To answer, select the appropriate options in the answer area.

Hot Area:



Answer Area

First cmdlet to run:

	▼
Install-AdfsFarm	
Install-Package	
Install-WindowsFeature	

Second cmdlet to run:

	▼
Install-AdfsFarm	
New-AdfsOrganization	
Set-AdfsFarmInformation	
Set-AdfsProperties	

Correct Answer:

Answer Area

First cmdlet to run:

	▼
Install-AdfsFarm	
Install-Package	
Install-WindowsFeature	

Second cmdlet to run:

	▼
Install-AdfsFarm	
New-AdfsOrganization	
Set-AdfsFarmInformation	
Set-AdfsProperties	

Section: (none)

Explanation

Explanation/Reference:

QUESTION 93

HOTSPOT

You have a server that runs Windows Server 2016.

You run the commands shown in the following output:

```
PS G:\> Get-DedupVolume | fl.
Volume                : G:
VolumeId               : \\?\Volume{2efa2f6e-db4a-4bb1-aa15-31ae8b073d16}\
```

```

Enabled                : True
UsageType              : Default
DataAccessEnabled      : True
Capacity               : 923.87 GB
FreeSpace              : 393.98 GB
UsedSpace              : 529.89 GB
UnoptimizedSize        : 1008.7 GB
SavedSpace             : 478.82. GB
SavingsRate            : 47 %
MinimumFileAgeDays     : 3
MinimumFileSize        : 32768
NoCompress             : False
ExcludeFolder          :
ExcludeFileType        :
ExcludeFileTypeDefault : {edb, jrs}
NoCompressionFileType  : {asf, mov, wma, wmv ...}
ChunkRedundancyThreshold : 100
Verify                : False
OptimizeInUserFiles    : False
OptimizePartialFiles   : False

```



PS G:\> Get-Date

Tuesday, June 21, 2016 5:29:28 PM

PS G:\DC01> dir | select Mode,LastWriteTime,Length,Name | ft -AutoSize

Mode	LastWriteTime	Length	Name
-----	-----	-----	-----d-----
2/18/2015 11:54:56 AM			Snapshots d----
2/18/2015 12:11:42 PM			Virtual Machines -a----
6/21/2016 5:27:40 PM	51539608064		DC01.vhd
-a---	6/18/2016 7:00:00 AM	12400	Readme.txt
-a---	1/5/2015 7:00:00 AM	3939235840	Software.iso

For each of the following statements, select Yes if the statement is true. Otherwise, select No.

Hot Area:

Answer Area

Statements	Yes	No
DC01.vhd will be processed by deduplication	<input type="radio"/>	<input type="radio"/>
Readme.txt will be processed by deduplication.	<input type="radio"/>	<input type="radio"/>
Software.iso will be processed by deduplication.	<input type="radio"/>	<input type="radio"/>

Correct Answer:

Answer Area

Statements	Yes	No
DC01.vhd will be processed by deduplication	<input type="radio"/>	<input checked="" type="radio"/>
Readme.txt will be processed by deduplication.	<input type="radio"/>	<input checked="" type="radio"/>
Software.iso will be processed by deduplication.	<input checked="" type="radio"/>	<input type="radio"/>

Section: (none)

Explanation

Explanation/Reference:

Explanation:

DC01.vhd will not be processed by deduplication because it was last written to on 6/21/2016 and the current date is 6/21/2016, while the "MinimumFileAgeDays = 3". This means that a file must be unchanged for at least 3 days to be processed by deduplication

Readme.txt will not be processed by deduplication because its filesize is 12400 bytes, but the "MinimumFileSize = 32768".

Software.Iso will be processed by deduplication. It is above the MinimumFileSize, and has not been modified for more than 3 days.

QUESTION 94

You have a Nano Server that runs Windows Server 2016. The Nano Server runs on a physical machine.

You have not installed any packages on the server.

You attach a new disk to the server, and you initialize the disk as a GPT disk.

You need to create a ReFS-formatted volume on the new disk.

What should you do first?

- A. From the physical server, log on to the Nano Server Recovery Console.
- B. Install the Microsoft NanoServer-Host-Package package.
- C. Run the **Format-Volume** cmdlet and specify the **-FileSystem** switch.
- D. Install the Microsoft NanoServer-Storage-Package package.

Correct Answer: C

Section: (none)

Explanation

Explanation/Reference:

QUESTION 95

Note: This question is part of a series of questions that present the same scenario. Each question in the series contains a unique solution that might meet the stated goals. Some question sets might have more than one correct solution, while others might not have a correct solution.

After your answer a question in this section, you will NOT be able to return to it.

As a result, these questions will not appear in the review screen.

You have a server named Server1 that runs Windows Server 2016.

You plan to use Windows Server Backup to back up all of the data on Server1.

You create a new volume on Server1.

You need to ensure that the new volume can be used as a backup target.

The backup target must support incremental backups.

Solution: You mount the volume to C:\Backup, and you format the volume by using NTFS.

Does this meet the goal?

- A. Yes
- B. No

Correct Answer: A

Section: (none)

Explanation

Explanation/Reference:

QUESTION 96

You create a Nano server image named Nano1.vhdx by using the **New-NanoServerImage** cmdlet.

You attach Nano1.vhdx to a Generation 1 virtual machine named Nano1.

When you start Nano1, you get the following error message:

"Boot failure. Reboot and select proper Boot device or Insert Boot Media in selected Boot device"

You need to successfully start Nano server.

What should you do?

- A. Attach Nano1.vhdx to a SCSIcontroller.
- B. Recreate Nano1 as a Generation 2 virtual machine.
- C. Increase the memory of Nano1 to 512 Mb.
- D. Modify the BIOS settings of Nano1.



Correct Answer: B

Section: (none)

Explanation

Explanation/Reference:

Explanation:

A Generation 1 VM cannot boot from a vhdx disk; only a Generation 2 VM can boot from a vhdx disk.

QUESTION 97

You have two servers named Server1 and Server2 that run Windows Server 2016.

You plan to implement Storage Replica to replicate the contents of volumes on Server1 to Server2.

You need to ensure that the replication traffic between the servers is limited to a maximum of 100 Mbps.

Which cmdlet should you run?.



<https://vceplus.com/>

- A. **Set-NetUDPSetting**
- B. **New-StorageQosPolicy**
- C. **Set-SmbBandwidthLimit**
- D. **Set-NetTCPSetting**

Correct Answer: C

Section: (none)

Explanation

Explanation/Reference:



QUESTION 98

Note: This question is part of a series of questions that use the same or similar answer choices. An answer choice may be correct for more than one question in the series. Each question is independent of the other questions in this series. Information and details provided in a question apply only to that question.

You have two servers named Server1 and Server2 that run Windows Server 2016. Server1 and Server2 have the Hyper-V server role installed and are nodes in a failover cluster.

On Server1, an administrator creates a virtual machine named VM1.

You need to configure VM1 for high availability.

Which tool should you use?

- A. the **clussvc.exe** command
- B. the **cluster.exe** command
- C. the Computer Management snap-in
- D. the **configurehyperv.exe** command

- E. the Disk Management snap-in
- F. the Failover Cluster Manager snap-in
- G. the Hyper-V Manager snap-in
- H. the Server Manager app

Correct Answer: F

Section: (none)

Explanation

Explanation/Reference: Explanation: <http://windowsitpro.com/hyper-v/make-vm-highly-available-windows-server-2012>

QUESTION 99

You have a server named Server1 that runs Windows Server 2016.

Server1 has four SCSI disks and a storage pool named Pool1 that contains three disks.

You create a virtual disk named Disk 1 that uses a mirrored layout.

You create a partition named Partition1 that uses all of the available space on Disk 1.

You need to extend Partition1.

What should you do first?

- A. From Windows PowerShell, run the **Resize-VirtualDisk** cmdlet.
- B. From Windows PowerShell, run the **Resize-StorageTier** cmdlet.
- C. From Windows PowerShell, run the **Expand-IscsiVirtualDisk** cmdlet.
- D. From Disk Management, modify the properties of Partition1.
- E. From Disk Management, extend a volume.

Correct Answer: A

Section: (none)

Explanation

Explanation/Reference:

QUESTION 100

You have a Hyper-V host named Server1 that runs Windows Server 2016.

The host has two virtual machines (VMs) named VM1 and VM2.

On the Hyper-V host, you create two virtual disks named Disk1 and Disk2.

You plan to create a test environment for Storage Spaces Direct.

You need to configure the VMs to connect to the virtual disks.

What should you use?

- A. An iSCSI target
- B. A virtual SCSI controller
- C. A virtual fibre channel adapter
- D. A virtual IDE controller

Correct Answer: B

Section: (none)

Explanation

Explanation/Reference:

References: <https://blogs.msdn.microsoft.com/clustering/2015/05/27/testing-storage-spaces-direct-using-windows-server-2016-virtual-machines/>

QUESTION 101

Your network contains an Active Directory domain.

The domain contains two Hyper-V hosts.

You plan to perform live migrations between the hosts.

You need to ensure that the live migration traffic is authenticated by using Kerberos.

What should you do first?

- A. From Server Manager, install the Host Guardian Service server role on a domain controller.
- B. From Active Directory Users and Computers, add the computer accounts for both servers to the Cryptographic Operators group.
- C. From Active Directory Users and Computers, modify the Delegation properties of the computer accounts for both servers.
- D. From Server Manager, install the Host Guardian Service server role on both servers.

Correct Answer: C

Section: (none)

Explanation

Explanation/Reference:

Explanation:

If you have decided to use Kerberos to authenticate live migration traffic, configure constrained delegation before you proceed to the rest of the steps.

To configure constrained delegation

QUESTION 102

A company named Contoso, Ltd has five Hyper-V hosts that are configured as shown In the following table.

Hyper-V host name	Configuration
Server1	Windows Sever 2012 R2 and an Intel Xeon E7 processor
Server2	Windows Sever 2012 R2 and an Intel i7 processor
Server3	Windows Sever 2016 and an Intel i7 processor
Server4	Windows Sever 2016 and an AMD Opteron processor
Server5	Windows Sever 2012 R2 and an Intel Xeon E7 processor

What are two valid live migration scenarios for virtual machines in your environment? Each correct answer presents a complete solution.

- A. from Server4 to Server5
- B. from Server1 to Server5
- C. from Server3 to Server4
- D. from Server2 to Server3

Correct Answer: B

Section: (none)

Explanation

Explanation/Reference:

QUESTION 103

Note: This question is part of a series of questions that present the same scenario. Each question in the series contains a unique solution that might meet the stated goals. Some question sets might have more than one correct solution, while others might not have a correct solution.

After your answer a question in this section, you will NOT be able to return to it.

As a result, these questions will not appear in the review screen.

Your network contains an Active Directory forest named contoso.com.

You need to identify which server is the schema master.

Solution: From Windows PowerShell, you run **Get-ADDomainController -Discover -Service 2**.

Does this meet the goal?

- A. Yes
- B. No

Correct Answer: B

Section: (none)

Explanation

Explanation/Reference:

References: <https://blogs.technet.microsoft.com/mempson/2007/11/08/how-to-find-out-who-has-your-fsmo-roles/>

QUESTION 104

You have Nano Setver image named Disk1 .vhdx.

You mount Disk1 .vhdx.

You need to add a folder that contains several files to the image.

Which tool or cmdlet you should use?

- A. **Copy-Item**
- B. **Add-WindowsImage**
- C. **Add-
WindowsPackage**
- D. **Edit-
NanoServerImage**

Correct Answer: A

Section: (none)

Explanation

Explanation/Reference:

QUESTION 105

Your network contains an Active Directory domain. The domain contains a new file server named Server1 that runs a Server Core installation of Windows Server 2016.

Server1 has an ReFS-formatted volume D: and NTFS-formatted volume E:. The volumes do not contain any data.

You install the Data Deduplication role service on Server1.

You need to implement Data Deduplication for volumes on D: and E:.

Solution: From Windows PowerShell, you run **Format-Volume D: -FileSystem EXFat** and **Enable-DeDupVolume -Volume D:,E:**.

Does this meet the goal?

- A. Yes
- B. No

Correct Answer: A

Section: (none)

Explanation

Explanation/Reference:

QUESTION 106

Note: This question is part of a series of questions that present the same scenario. Each question in the series contains a unique solution that might meet the stated goals. Some question sets might have more than one correct solution, while others might not have a correct solution.

After your answer a question in this section, you will NOT be able to return to it. As a result, these questions will not appear in the review screen.

Your network contains an Active Directory forest named contoso.com.

You need to identify which server is the schema master.

Solution: From a command prompt, you run **netdom query fsmo**.

Does this meet the goal?

- A. Yes
- B. No

Correct Answer: A

Section: (none)

Explanation

Explanation/Reference:

References: <https://blogs.technet.microsoft.com/mempson/2007/11/08/how-to-find-out-who-has-your-fsmon-roles/>

QUESTION 107

You have two servers named Server1 and Server2.

A firewall exists between Server1 and Server2.

Both servers run Windows Server Update Services (WSUS).

Server1 downloads updates from Microsoft update.

Server2 must synchronize updates from Server1.

Which port should to open on the firewall?

- A. 80
- B. 443
- C. 3389
- D. 8530

Correct Answer: D

Section: (none)

Explanation

Explanation/Reference:

QUESTION 108

You have two servers named Server1 and Server2 that run Windows Server 2016.

You plan to implement Storage Replica to replicate the contents of volumes on Server1 to Server2.

You need to ensure that the replication traffic between the servers is limited to a maximum of 100 Mbps.

Which cmdlet should you run?

- A. **New-NetQosPolicy**
- B. **Set-NetworkController**
- C. **New-NetTransportFilter**
- D. **New-StorageQosPolicy**



Correct Answer: C

Section: (none)

Explanation

Explanation/Reference:

QUESTION 109

You have a server named Server1 that runs Windows Server 2016.

You need to configure Server1 as a Web Application Proxy.

Which server role or role service should you install on Server1?

- A. Web Server (IIS)
- B. Network Policy and Access Services
- C. Direct Access and VPN (RAS)
- D. Active Directory Federation Services
- E. Remote Access

Correct Answer: E

Section: (none)

Explanation



Explanation/Reference:

QUESTION 110

Your network contains an Active Directory domain. The domain contains a new file server named Server1 that runs a Server Core installation of Windows Server 2016.

Server1 has an ReFS-formatted volume D: and NTFS-formatted volume E:.

The volumes do not contain any data.

You install the Data Deduplication role service on Server1.

You need to implement Data Deduplication for volumes on D: and E:.

Solution: From Windows PowerShell, you run **Enable-DeDupVolume-Volume D:,E:.**

Does this meet the goal?

- A. Yes
- B. No

Correct Answer: B

Section: (none)

Explanation

Explanation/Reference:



<https://vceplus.com/>

