

Exam 70-697

Number: 70-697
Passing Score: 800
Time Limit: 120 min
File Version: 8.0

Exam Microsoft Exam 70-697
Configuring Windows Devices

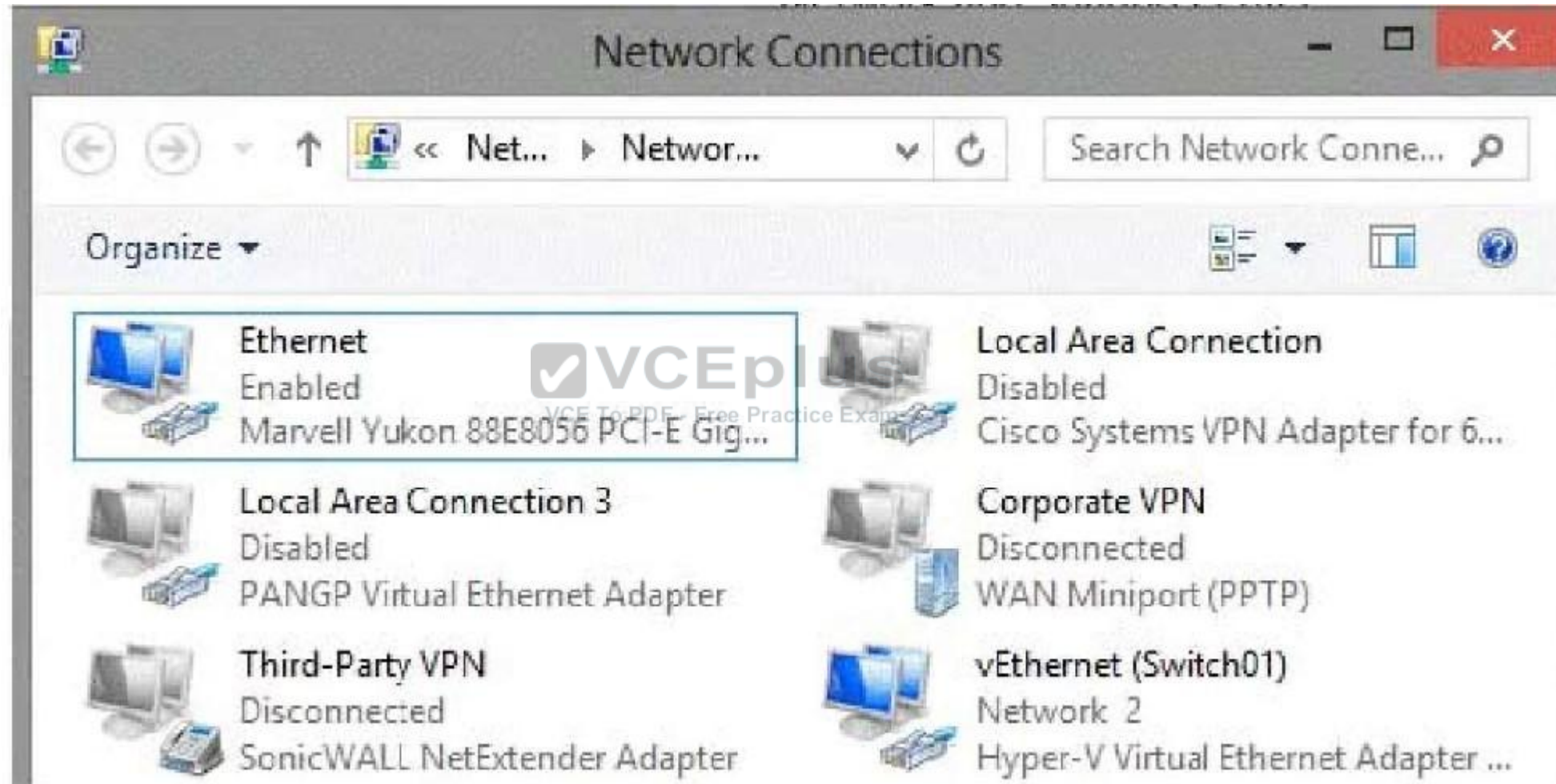


Exam A

QUESTION 1

You are setting up a Windows 10 Enterprise computer.

The computer's network connections are shown in the Network connections exhibit. (Click the Exhibit button.)



The computer's network settings are shown in the Network Settings exhibit. (Click the Exhibit button.)

Ethernet adapter vEthernet {Switch01}:

```
Connection-specific DNS Suffix . :  
Description . . . . . : Hyper-V Virtual Ethernet Adapter #2  
Physical Address. . . . . : BC-AE-C5-21-02-A3  
DHCP Enabled. . . . . : No  
Autoconfiguration Enabled . . . . : Yes  
Link-local IPv6 Address . . . . . : fe80::4ad:8811:98c6:5f2c%17(Preferred)  
IPv4 Address. . . . . : 192.168.1.55(Preferred)  
Subnet Mask . . . . . : 255.255.255.0  
Default Gateway . . . . . : 192.168.1.1  
DHCPv6 IAID . . . . . : 314355397  
DHCPv6 Client DUID. . . . . : 00-01-00-01-17-F7-1A-65-BC-AE-C5-21-02-A3  
DNS Servers . . . . . : 8.8.8.8  
                        8.8.4.4  
NetBIOS over Tcpip. . . . . : Enabled
```

Advanced TCP/IP settings are shown in the Advanced TCP/IP Settings exhibit. (Click the Exhibit button.)

VCE To PDF - Free Practice Exam

Advanced TCP/IP Settings



IP Settings

DNS

WINS

IP addresses

IP address

Subnet mask

192.168.1.55

255.255.255.0



VCE To PDF - Free Practice Exam

Add...

Edit...

Remove

Default gateways:

Gateway

Metric

192.168.1.1

Automatic

For each of the following statements, select Yes if the statement is true. Otherwise, select No.
NOTE: Each correct selection is worth one point.

Answer Area

	Yes	No
The computer is a Microsoft Hyper-V host.	<input type="radio"/>	<input type="radio"/>
The computer has a static IP address.	<input type="radio"/>	<input type="radio"/>
The computer is a Microsoft Hyper-V virtual machine.	<input type="radio"/>	<input type="radio"/>

A.

Correct Answer: A

Section: (none)

Explanation

Explanation/Reference:

Answer Area

Yes No

The computer is a Microsoft Hyper-V host.

☒☐

The computer has a static IP address.

☒☐

The computer is a Microsoft Hyper-V virtual machine.

☐☒

QUESTION 2

A company has 100 client computers that run Windows 10 Enterprise. A new company policy requires that all client computers have static IPv6 addresses. You need to assign static IPv6 addresses to the client computers.

Which Network Shell (netsh) command should you run?

- A. add address
- B. set interface
- C. set global
- D. set address

Correct Answer: A

Section: (none)

Explanation

Explanation/Reference:

QUESTION 3

You have a computer that runs Windows 10 Enterprise that has a local group policy as shown in the following graphic.



Local Group Policy Editor

File Action View Help

Setting

Setting	State
Allow Automatic Updates immediate installation	Not configured
Allow non-administrators to receive update notifications	Not configured
Allow signed updates from an intranet Microsoft update service location	Not configured
Always automatically restart at the scheduled time	Enabled
Automatic Updates detection frequency	Enabled
Configure Automatic Updates	Enabled
Defer Upgrade	Not configured
Delay Restart for scheduled installations	Not configured
Do not adjust default option to 'Install Updates and Shut Down' in Shut Down Windows dialog box	Not configured
Do not connect to any Windows Update Internet locations	Enabled
Do not display 'Install Updates and Shut Down' option in Shut Down Windows dialog box	Not configured
Enable client-side targeting	Enabled
Enabling Windows Update Power Management to automatically wake up the system to install scheduled updates	Not configured
No auto-restart with logged on users for scheduled automatic updates installations	Enabled
Re-prompt for restart with scheduled installations	Not configured
Reschedule Automatic Updates scheduled installations	Not configured
Specify intranet Microsoft update service location	Enabled
Turn on recommended updates via Automatic Updates	Not configured
Turn on Software Notifications	Enabled

Extended Standard

19 setting(s)

Use the drop-down menus to select the answer choice that completes each statement based on the information presented in the graphic.
NOTE: Each correct selection is worth one point.



Answer Area

Windows updates will be downloaded from
[answer choice].

- Windows Server Update Services only
- Microsoft Windows Update servers only
- Windows Server Updates Services and Microsoft Windows Update servers

If a user is logged into the computer and an
update requires a restart, the computer will
[answer choice].

- restart when the user signs out
- restart within a maximum delay of 3 hours
- restart within a maximum delay of 3 days

A.

Correct Answer:
Section: (none)
Explanation

Explanation/Reference:

Answer Area

Windows updates will be downloaded from
[answer choice].

Windows Server Update Services only

Microsoft Windows Update servers only

Windows Server Updates Services and Microsoft Windows Update servers

If a user is logged into the computer and an
update requires a restart, the computer will
[answer choice].

restart when the user signs out

restart within a maximum delay of 3 hours

restart within a maximum delay of 3 days

QUESTION 4

You deploy several tablet PCs that run Windows 10 Enterprise. You need to minimize power usage when the user presses the sleep button. What should you do?

- A. In Power Options, configure the sleep button setting to Sleep.
- B. In Power Options, configure the sleep button setting to Hibernate.
- C. Configure the active power plan to set the system cooling policy to passive.
- D. Disable the C-State control in the computer's BIOS.

Correct Answer: B

Section: (none)

Explanation

Explanation/Reference:

QUESTION 5

You manage 50 computers that run Windows 10 Enterprise.

You have a Windows To Go workspace installed on a USB drive named USB1. You need to configure USB1 to meet the following requirements:

When you run Windows To Go from USB1, you can see the contents of the computer's internal drives from File Explorer.

When you connect USB1 to a computer that runs Windows 10, you can automatically view the content of USB1 from File Explorer.

In the table below, select the action that must be performed to achieve each requirement. NOTE: Make only one selection in each column. Each correct

selection is worth one point.

Answer Area		
Actions	When you run Windows To Go from USB1, you can see the contents of the computer's internal drives from File Explorer.	When you connect USB1 to a computer that runs Windows 10, you can automatically view the content of USB1 from File Explorer
From DiskPart, configure the san policy option.	<input type="radio"/>	<input type="radio"/>
From DiskPart, configure the attributes volume option.	<input type="radio"/>	<input type="radio"/>
From DiskPart, configure the attributes disk option.	<input type="radio"/>	<input type="radio"/>
From fsutil, configure the volume option.	<input type="radio"/>	<input type="radio"/>
From fsutil, configure the behavior option.	<input type="radio"/>	<input type="radio"/>

A.

Correct Answer:

Section: (none)

Explanation

Explanation/Reference:

Answer Area

Actions	When you run Windows To Go from USB1, you can see the contents of the computer's internal drives from File Explorer.	When you connect USB1 to a computer that runs Windows 10, you can automatically view the content of USB1 from File Explorer
From DiskPart, configure the san policy option.	<input checked="" type="radio"/>	<input type="radio"/>
From DiskPart, configure the attributes volume option.	<input type="radio"/>	<input checked="" type="radio"/>
From DiskPart, configure the attributes disk option.	<input type="radio"/>	<input type="radio"/>
From fsutil, configure the volume option.	<input type="radio"/>	<input type="radio"/>
From fsutil, configure the behavior option.	<input type="radio"/>	<input type="radio"/>

QUESTION 6

You have a computer named Computer1 that runs Windows 10 Enterprise. Computer1 is configured to receive Windows updates from the Internet. If a user is logged on to Computer1, you need to prevent Computer1 from automatically restarting without the logged on user's consent after the installation of the Windows updates. What should you do?

- A. Enable the Defer upgrades setting.
- B. Edit the Automatic App Update scheduled task.
- C. Configure the Choose how updates are delivered setting.
- D. Configure the Choose how updates are installed setting.

Correct Answer: D

Section: (none)

Explanation

Explanation/Reference:

QUESTION 7

Your network contains an Active Directory domain named contoso.com. The domain contains Windows 10 Enterprise client computers. Your company has a subscription to Microsoft Office 365. Each user has a mailbox that is stored in Office 365 and a user account in the contoso.com domain. Each mailbox has two email addresses.

You need to add a third email address for each user.
What should you do?

- A. From Active Directory Users and Computers, modify the E-mail attribute for each user.
- B. From Microsoft Azure Active Directory Module for Windows PowerShell, run the Set-Mailbox cmdlet.
- C. From Active Directory Domains and Trusts, add a UPN suffix for each user.
- D. From the Office 365 portal, modify the Users settings of each user.

Correct Answer: B

Section: (none)

Explanation

Explanation/Reference:

**QUESTION 8**

You have a client Windows 10 Enterprise computer. The computer is joined to an Active Directory domain. The computer does not have a Trusted Platform Module (TPM) chip installed. You need to configure BitLocker Drive Encryption (BitLocker) on the operating system drive. Which Group Policy object (GPO) setting should you configure?

- A. Allow access to BitLocker-protected fixed data drives from earlier version of Windows.
- B. Require additional authentication at startup.
- C. Allow network unlock at startup.
- D. Configure use of hardware-based encryption for operating system drives.

Correct Answer: B

Section: (none)

Explanation

Explanation/Reference:

QUESTION 9

You have an Active Directory domain named contoso.com that contains a deployment of Microsoft System Center 2012 Configuration Manager Service Pack 1 (SP1). You have a Microsoft Intune subscription that is synchronized to contoso.com by using the Microsoft Azure Active Directory

Synchronization Tool (DirSync.) You need to ensure that you can use Configuration Manager to manage the devices that are registered to your Microsoft Intune subscription.

Which two actions should you perform? Each correct answer presents a part of the solution.

- A. In Microsoft Intune, create a new device enrollment manager account.
- B. Install and configure Azure Active Directory Synchronization Services (AAD Sync.)
- C. In Microsoft Intune, configure an Exchange Connector.
- D. In Configuration Manager, configure the Microsoft Intune Connector role.
- E. In Configuration Manager, create the Microsoft Intune subscription.

Correct Answer: DE

Section: (none)

Explanation

Explanation/Reference:

QUESTION 10

You have a Windows 10 Enterprise computer. You have a 1-terabyte external hard drive.

You purchase a second 1-terabyte external hard drive.

You need to create a fault-tolerant volume that includes both external hard drives. You also need to ensure that additional external hard drives can be added to the volume. Which three actions should you perform in sequence? To answer, move the appropriate actions from the list of actions to the answer area and arrange them in the correct order.

Actions

Restore your data from the backup.

From Storage Spaces, create a new storage pool. Set the Resiliency Type to **two-way mirror**.

From Storage Spaces, create a new storage pool. Set the Resiliency Type to **parity**.

From Storage Spaces, create a new storage pool. Set the Resiliency Type to **three-way mirror**.

Back up the existing data on your original external hard drive.

From Disk Management, create and format a new volume on the second external drive.

From Disk Management, create a mirrored volume containing the two external drives.

Answer Area



A.

Correct Answer:

Section: (none)

Explanation

Explanation/Reference:

Actions

Restore your data from the backup.

From Storage Spaces, create a new storage pool. Set the Resiliency Type to **two-way mirror**.

From Storage Spaces, create a new storage pool. Set the Resiliency Type to **parity**.

From Storage Spaces, create a new storage pool. Set the Resiliency Type to **three-way mirror**.

Back up the existing data on your original external hard drive.

From Disk Management, create and format a new volume on the second external drive.

From Disk Management, create a mirrored volume containing the two external drives.

Answer Area

Back up the existing data on your original external hard drive.

From Storage Spaces, create a new storage pool. Set the Resiliency Type to **two-way mirror**.

Restore your data from the backup.

QUESTION 11

You manage Microsoft Intune for a company named Contoso. You have 200 computers that run Windows 10. The computers are Intune clients.

You need to configure software updates for the clients.

Which policy template should you use to configure each software updates setting? To answer, drag the appropriate policy templates to the correct settings. Each policy template may be used once, more than once, or not at all. You may need to drag the split bar between panes or scroll to view content.

Policy Templates

Microsoft Intune Agent Settings

Windows Configuration Policy

Windows Custom Policy (Windows 10 and Windows 10 Mobile)

Answer Area

Require automatic updates:

Policy template

Minimum classification of updates to install automatically:

Policy template

Allow immediate installation of updates that do not interrupt Windows:

Policy template

A.

Correct Answer:

Section: (none)

Explanation

Explanation/Reference:

Policy Templates

Microsoft Intune Agent Settings

Windows Configuration Policy

Windows Custom Policy (Windows 10 and Windows 10 Mobile)

Answer Area

Require automatic updates:

Windows Configuration Policy

Minimum classification of updates to install automatically:

Windows Configuration Policy

Allow immediate installation of updates that do not interrupt Windows:

Microsoft Intune Agent Settings

QUESTION 12

You support Windows 10 Enterprise computers that are members of an Active Directory domain. Recently, several domain user accounts have been

configured with super-mandatory user profiles. A user reports that she has lost all of her personal data after a computer restart. You need to configure the user's computer to prevent possible user data loss in the future. What should you do?

- A. Remove the .man extension from the user profile name.
- B. Configure Folder Redirection by using the domain group policy.
- C. Configure the user's documents library to include folders from network shares.
- D. Add the .dat extension to the user profile name.

Correct Answer: B

Section: (none)

Explanation

Explanation/Reference:

QUESTION 13

You have a network that contains Window 10 Enterprise computers. The network configuration of one of the computers is shown in the following output.

Windows IP Configuration

Host Name : Computer1
Primary Dns Suffix :
Node Type : Hybrid
IP Routing Enabled. : No
WINS Proxy Enabled. : No

Wireless LAN adapter Local Area Connection* 10:

Media State : Media disconnected
Connection-specific DNS Suffix . :
Description : Microsoft Wi-Fi Direct Virtual Adapter #5
Physical Address. : E8-B1-94-0A-8E-10
DHCP Enabled. : Yes
Autoconfiguration Enabled : Yes

Ethernet adapter Ethernet:

Connection-specific DNS Suffix . :
Description : DisplayLink Network Adapter NCM#5
Physical Address. : 00-50-2E-00-7D-F0
DHCP Enabled. : Yes
Autoconfiguration Enabled : Yes
Link-local IPv6 Address : fe80::c4e9:416b:3ebe:a6cb%13(Preferred)
Default Gateway : fe80::224:1ff:fedf:699f%34
DHCPv6 IAID : 771772598


```
Physical Address. . . . . : E8-B1-FC-29-7D-F0
DHCP Enabled. . . . . : Yes
Autoconfiguration Enabled . . . . : Yes
IPv4 Address. . . . . : 10.1.1.133(Preferred)
Subnet Mask . . . . . : 255.255.255.0
Lease Obtained. . . . . : Thursday, August 13, 2015 12:01:10 PM
Lease Expires . . . . . : Saturday, August 21, 2015 10:37:18 AM
Default Gateway . . . . . : 10.1.1.1
DHCP Server . . . . . : 10.1.1.1
DNS Servers . . . . . : 10.1.1.1
NetBIOS over Tcpi . . . . . : Enabled
```

Use the drop-down menus to select the answer choice that completes each statement based on the information presented in the output.
NOTE: Each correct selection is worth one point.

Answer Area

The computer has obtained **[answer choice]**
from a DHCP server.

only the IPv4 configuration
only the IPv6 configuration
the IPv4 and IPv6 configurations

The computer **[answer choice]** access the
Internet.

will be unable to
will use 10.1.1.1 to
will use fe80::224:1ff:fedf:699f to

A.

Correct Answer:
Section: (none)
Explanation

Explanation/Reference:

Answer Area

The computer has obtained [answer choice]
from a DHCP server.

only the IPv4 configuration
only the IPv6 configuration
the IPv4 and IPv6 configurations

The computer [answer choice] access the
Internet.

will be unable to
will use 10.1.1.1 to
will use fe80::224:1ff:fedf:699f to

QUESTION 14

You have a Windows 10 Enterprise computer.

The computer has a shared folder named C:\Marketing. The shared folder is on an NTFS volume. The current NTFS and share permissions are configured as follows.

Group name	NTFS permission	Shared folder permission
Everyone	Read and Execute	Read
Marketing	Modify	Full Control

UserA is a member of both the Everyone group and the Marketing group. UserA must access C:\Marketing from across the network. You need to identify the effective permissions of UserA to the C:\Marketing folder. What permission should you identify?

- A. Full Control
- B. Read and Execute
- C. Read

D. Modify

Correct Answer: D

Section: (none)

Explanation

Explanation/Reference:

QUESTION 15

You plan to deploy a Microsoft Azure RemoteApp collection by using a custom template image. The image will contain Microsoft Office 365 ProPlus apps.

You need to ensure that multiple users can run Office 365 ProPlus from the custom template image simultaneously.

What should you include in the configuration file?

A. <Property Name = "FORCEAPPSHUTDOWN" Value = "FALSE" />

B. <Product ID = "0365ProPlusRetail" />

C. <Property Name = "SharedComputerLicensing" Value = "1" />

D. <Property Name = "AUTOACTIVATE" Value = "1" />

Correct Answer: C

Section: (none)

Explanation



Explanation/Reference:

QUESTION 16

You manage Microsoft Intune for a company named Contoso. Intune client computers run Windows 10 Enterprise.

You notice that there are 25 mandatory updates listed in the Intune administration console. You need to prevent users from receiving prompts to restart

Windows following the installation of mandatory updates.

Which policy template should you use?

A. Microsoft Intune Agent Settings

B. Windows Configuration Policy

C. Microsoft Intune Center Settings

D. Windows Custom Policy (Windows 10 and Windows 10 Mobile)

Correct Answer: A

Section: (none)

Explanation

Explanation/Reference:**QUESTION 17**

You manage a Microsoft Azure RemoteApp deployment. The deployment consists of a cloud collection named CloudCollection1 and a hybrid collection named HybridCollection1. Both collections reside in a subscription named Subscription1. Subscription1 contains two Active Directory instances named AzureAD1 and AzureAD2.

AzureAD1 is the associated directory of Subscription1.

AzureAD1 is synchronized to an on-premises Active Directory forest named constoso.com. Passwords are synchronized between AzureAD1 and the on-premises Active Directory.

You have the following user accounts:

User Name	Account Type
User1	Microsoft account
User2	AzureAD1 account
User3	Contoso.com account

You need to identify to which collections each user can be assigned access. What should you identify? To answer, select the appropriate options in the answer area.

Answer Area

User1:

User2:

User3:

User1:

None

CloudCollection1 only

HybridCollection1 only

CloudCollection1 and HybridCollection1

User2:

None

CloudCollection1 only

HybridCollection1 only

CloudCollection1 and HybridCollection1

User3:

None

CloudCollection1 only

HybridCollection1 only

CloudCollection1 and HybridCollection1

A.

Correct Answer:

Section: (none)

Explanation

Explanation/Reference:



User1:

None
CloudCollection1 only
HybridCollection1 only
CloudCollection1 and HybridCollection1

User2:

None
CloudCollection1 only
HybridCollection1 only
CloudCollection1 and HybridCollection1

User3:

None
CloudCollection1 only
HybridCollection1 only
CloudCollection1 and HybridCollection1

QUESTION 18

You have a desktop computer and a tablet that both run Windows 10 Enterprise. The desktop computer is located at your workplace and is a member of an Active Directory domain. The network contains an Application Virtualization (App-V) infrastructure. Several App-V applications are deployed to all desktop computers.

The tablet is located at your home and is a member of a workgroup. Both locations have Internet connectivity. You need to be able to access all applications that run on the desktop computer from you tablet.

Actions

Enable Remote Desktop.

Enable Remote Assistance.

Install Client Hyper-V.

Install the Application Virtualization (App-V) Client.

Deploy Application Virtualization (App-V) packages.

Run the Remote Desktop Client.

Answer Area

desktop computer

Action

tablet

Action

Which actions should you perform on each computer? To answer, drag the appropriate action to the correct computer. Each action may be used once, more than once, or not at all. You may need to drag the split bar between panes or scroll to view content.

A.

Correct Answer:

Section: (none)

Explanation

Explanation/Reference:



Actions

Enable Remote Desktop.

Enable Remote Assistance.

Install Client Hyper-V.

Install the Application Virtualization (App-V) Client.

Deploy Application Virtualization (App-V) packages.

Run the Remote Desktop Client.

Answer Area

desktop computer

tablet

Enable Remote Desktop.

Run the Remote Desktop Client.

QUESTION 19

You have a Windows 10 Enterprise computer named Computer1 that has the Hyper-V feature installed.

Computer1 hosts a virtual machine named VM1.

VM1 runs Windows 10 Enterprise. VM1 connects to a private virtual network switch. From Computer1, you need to remotely execute Windows

PowerShell cmdlets on VM1.
What should you do?

- A. Run the winrm.exe command and specify the s parameter.
- B. Run the Powershell.exe command and specify the Command parameter.
- C. Run the Receive-PSSession cmdlet and specify the Name parameter.
- D. Run the Invoke-Command cmdlet and specify the VMName parameter.

Correct Answer: D

Section: (none)

Explanation

Explanation/Reference:

QUESTION 20

Employees are permitted to bring personally owned portable Windows 10 Enterprise computers to the office. They are permitted to install corporate applications by using the management infrastructure agent and access corporate email by using the Mail app. An employee's personally owned portable computer is stolen. You need to protect the corporate applications and email messages on the computer. Which two actions should you perform? Each correct answer presents part of the solution.

- A. Prevent the computer from connecting to the corporate wireless network.
- B. Change the user's password.
- C. Disconnect the computer from the management infrastructure.
- D. Initiate a remote wipe.

Correct Answer: BD

Section: (none)

Explanation

Explanation/Reference:

QUESTION 21

A company has Windows 10 Enterprise client computers. The client computers are connected to a corporate private network. Users are currently unable to connect from their home computers to their work computers by using Remote Desktop. You need to ensure that users can remotely connect to their office computers by using Remote Desktop. Users must not be able to access any other corporate network resource by using the local Windows installation from their home computers. Which setting should you configure on the home computers?

- A. Virtual Private Network connection

- B. Remote Desktop local resources
- C. DirectAccess connection
- D. Remote Desktop Gateway IP address

Correct Answer: D

Section: (none)

Explanation

Explanation/Reference:

QUESTION 22

You administer Windows 10 Enterprise desktop computers that are members of an Active Directory domain. You want to create an archived copy of user profiles that are stored on the desktops. You create a standard domain user account to run a backup task.

You need to grant the backup task user account access to the user profiles.

What should you do?

- A. Add the backup task account to the Remote Management Users group on a domain controller.
- B. Add the backup task account to the Backup Operators group on every computer.
- C. Add the backup task account to the Backup Operators group on a domain controller.
- D. Set the backup task account as NTFS owner on all the profiles.

Correct Answer: B

Section: (none)

Explanation

Explanation/Reference:

QUESTION 23

You have a computer named Computer1 that runs Windows 10 Enterprise. Computer1 is a member of an Active Directory domain named contoso.com.

You have a line-of-business universal app named App1. App1 is developed internally. You need to ensure that you can run App1 on Computer1. The solution must meet the following requirements:

Minimize costs to deploy the app.

Minimize the attack surface on Computer1.

What should you do?

- A. Have App1 certified by the Windows Store.
- B. Sign App1 with a certificate issued by a third-party certificate authority.
- C. From the Update & Security setting on Computer1, enable the Sideload apps setting.

D. Run the Add-AppxProvisionedPackage cmdlet.

Correct Answer: C

Section: (none)

Explanation

Explanation/Reference:

QUESTION 24

You are an IT consultant for small and mid-sized business. One of your clients wants to start using Virtual Smart Cards on its Windows 10 Enterprise laptops and tablets.

Before implementing any changes,

the client wants to ensure that the laptops and tablets support Virtual Smart Cards. You need to verify that the client laptops and tablets support Virtual Smart Cards.

What should you do?

- A. Ensure that each laptop and tablet has a Trusted Platform Module (TPM) chip of version 1.2 or greater.
- B. Ensure that BitLocker Drive Encryption is enabled on a system drive of the laptops and tablets.
- C. Ensure that each laptop and tablet can read a physical smart card.
- D. Ensure that the laptops and tablets are running Windows 10 Enterprise edition.

Correct Answer: A

Section: (none)

Explanation

Explanation/Reference:

QUESTION 25

You support Windows 10 Enterprise computers.

Your company has started testing Application Virtualization (App-V) applications on several laptops. You discover that the App-V applications are available to users even when the laptops are offline. You need to ensure that the App-V applications are available to users only when they are connected to the company network.

What should you do?

- A. Change user permissions to the App-V applications.
- B. Disable the Disconnected operation mode.
- C. Configure mandatory profiles for laptop users.
- D. Reset the App-V client FileSystem cache.

Correct Answer: B

Section: (none)

Explanation

Explanation/Reference:

QUESTION 26

You are a system administrator for a department that has Windows 10 Enterprise computers in a domain configuration. You deploy an application to all computers in the domain. You need to use group policy to restrict certain groups from running the application. What should you do?

- A. Set up DirectAccess.
- B. Configure AppLocker.
- C. Disable BitLocker.
- D. Run the User State Management Tool.

Correct Answer: B

Section: (none)

Explanation

Explanation/Reference:



QUESTION 27

You have a Microsoft Intune subscription. You have three security groups named Security1, Security2 and Security3. Security1 is the parent group of Security2. Security2 has 100 users. You need to change the parent group of Security2 to be Security3. What should you do first?

- A. Edit the properties of Security1.
- B. Edit the properties of Security2.
- C. Delete security2.
- D. Remove all users from Security2.

Correct Answer: C

Section: (none)

Explanation

Explanation/Reference:

QUESTION 28

You manage 50 computers that run Windows 10 Enterprise. You have a Microsoft Azure RemoteApp deployment.

The deployment consists of a hybrid collection named Collection1. All computers have the Hyper-V feature installed and have a virtual machine that runs Windows 7. You plan to install applications named App1 and App2 and make them available to all users. App1 is a 32-bit application. App2 is a 64-bit application.

You need to identify the installation method for each application. The solution needs to minimize the number of installations.

Which deployment method should you identify for each application? To answer, drag the appropriate deployment methods to the correct applications.

Each deployment method may

be used once, more than once, or not at all. You may need to drag the split bar between panes or scroll to view content.

NOTE: Each correct selection is worth one point.

● ● ● ● ●

Deployment Methods

Azure RemoteApp

Client Hyper-V

Local installation

● ● ● ● ●

Answer Area

 **VCEplus**
VCE To PDF - Free Practice Exam

App1:

Deployment method

App2:

Deployment method

A.

Correct Answer:

Section: (none)

Explanation

Explanation/Reference:

www.vceplus.com - Download A+ VCE (latest) free Open VCE Exams - VCE to PDF Converter - VCE Exam Simulator - VCE Online - IT Certifications



Deployment Methods

Azure RemoteApp

Client Hyper-V

Local installation

Answer Area

App1: Azure RemoteApp

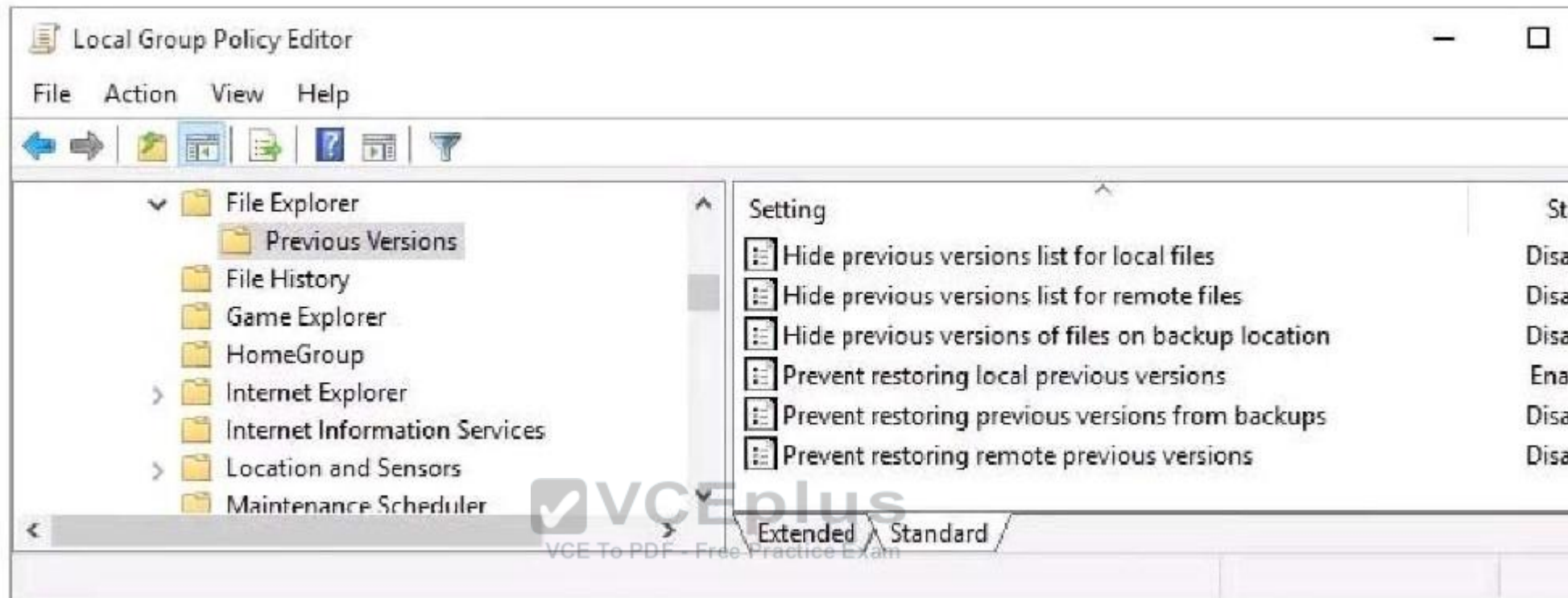
App2: Azure RemoteApp

QUESTION 29

You have a standalone computer that runs Windows 10 Enterprise. The computer is configured to automatically back up files by using File History. The user of the computer uses the OneDrive desktop app to sync files.

The Previous Versions settings from the local group policy of the computer are shown in the following graphic.





Use the drop-down menus to select the answer choice that completes each statement based on the information presented in the graphic.
NOTE: Each correct selection is worth one point.

Answer Area

If a user deletes a file from OneDrive by using File Explorer, the file **[answer choice]**.

If a user deletes a file from a local drive by using File Explorer, the file **[answer choice]**.

A.

Correct Answer:

Section: (none)

Explanation

Explanation/Reference:



Answer Area

If a user deletes a file from OneDrive by using File Explorer, the file **[answer choice]**.

cannot be restored

can be restored from onedrive.com

can be restored by using the Previous Versions tab

If a user deletes a file from a local drive by using File Explorer, the file **[answer choice]**.

cannot be restored

can be restored from onedrive.com

can be restored by using Previous Versions tab

QUESTION 30

Your company upgrades a research and development department workstation to a Windows 10 Enterprise computer.

Two of the workstation's folders need to be encrypted. The folders are named C:\ProtectedFiles and

C:\Backups.

You attempt to encrypt the folders. The output is shown in the following exhibit.

Administrator: Command Prompt

```
C:\>cipher /e /s:ProtectedFiles
```

```
Setting the directory ProtectedFiles to encrypt new files [OK]
```

```
Encrypting files in C:\ProtectedFiles\
```

```
Project1.zip          [OK]
```

```
Project2.zip          [OK]
```

```
Project3.zip          [OK]
```

```
Project4.zip          [OK]
```

```
5 file(s) [or directorie(s)] within 2 directorie(s) were encrypted.
```

```
Converting files from plaintext to ciphertext may leave sections of old  
plaintext on the disk volume(s). It is recommended to use command  
CIPHER /W:directory to clean up the disk after all converting is done.
```

```
C:\>cipher /e /s:Backups
```

```
Setting the directory Backups to encrypt new files [OK]
```

```
Encrypting files in C:\Backups\
```

```
Backup.zip            [ERR]
```

```
Backup.zip: The specified file is read only.
```

```
OldBackup.zip         [OK]
```

```
2 file(s) [or directorie(s)] within 2 directorie(s) were encrypted.
```

```
Converting files from plaintext to ciphertext may leave sections of old  
plaintext on the disk volume(s). It is recommended to use command  
CIPHER /W:directory to clean up the disk after all converting is done.
```

```
C:\>_
```

Use the drop-down menus to select the answer choice that completes each statement.
NOTE: Each correct selection is worth one point.

Answer Area

The attempt to encrypt the ProtectedFiles folder and files [answer choice]

The attempt to encrypt the Backups folder and files [answer choice]

Answer Area

The attempt to encrypt the ProtectedFiles folder and files [answer choice]

succeeded for all files and folders.
succeeded for the files but not for the folder.
will not finish until you run the command to clean up the disk.

The attempt to encrypt the Backups folder and files [answer choice]

failed to encrypt the files and folders.
encrypted the folder but not the files.
failed to encrypt one of the files but encrypted the folder and the

A.

Correct Answer:

Section: (none)

Explanation

Explanation/Reference:

Answer Area

The attempt to encrypt the ProtectedFiles folder and files **[answer choice]**

succeeded for all files and folders.
succeeded for the files but not for the folder.
will not finish until you run the command to clean up the disk.

The attempt to encrypt the Backups folder and files **[answer choice]**

failed to encrypt the files and folders.
encrypted the folder but not the files.
failed to encrypt one of the files but encrypted the folder and the c

QUESTION 31

You have a computer named Computer1 that runs Windows 10 Enterprise. You add a 1 TB hard drive and create a new volume that has the drive letter D.

You need to limit the amount of space that each user can consume on D: to 200 GB. Members of the Administrators group should have no limit.

Which three actions should you perform? Each correct answer presents part of the solution.

- A. Run fsutil quota violations D:.
- B. Enable the Deny disk space to users exceeding quota limit setting.
- C. Enable the Enable Quota Management setting.
- D. Set a default quota limit.
- E. Run convert D: /FS:NTFS.
- F. Add a quota entry.

Correct Answer: BCD

Section: (none)

Explanation

Explanation/Reference:

QUESTION 32

You have a server that runs Windows Server 2012 R2 server named Server1. Server1 has Remote Desktop Services (RDS) installed.

You create a session collection named Session1 and publish a RemoteApp in Session1. Server1 has an application named App1. The executable for App1 is C:\Apps\App1.exe. You need to ensure that App1 is available as a RemoteApp in Session1. What command should you run? To answer, select the appropriate options in the answer area.



Answer Area

    "C:\Apps\App1.exe"

"Session1" -DisplayName "App1"

Answer Area

- Get-RDRemoteApp
- New-RDRemoteApp
- Set-RDRemoteApp
- Set-RDSessionCollectionConfiguration

- CollectionName
- InformationVariable
- UserGroup

"Session1" -DisplayNam

- FilePath
- FileVirtualPath
- RequiredCommandLine
- ShowInWebAccess

"C:\Apps\App1.exe"

A.

Correct Answer:

Section: (none)

Explanation

Explanation/Reference:

Answer Area

Get-RDRemoteApp
New-RDRemoteApp
Set-RDRemoteApp
Set-RDSessionCollectionConfiguration

-CollectionName
-InformationVariable
-UserGroup

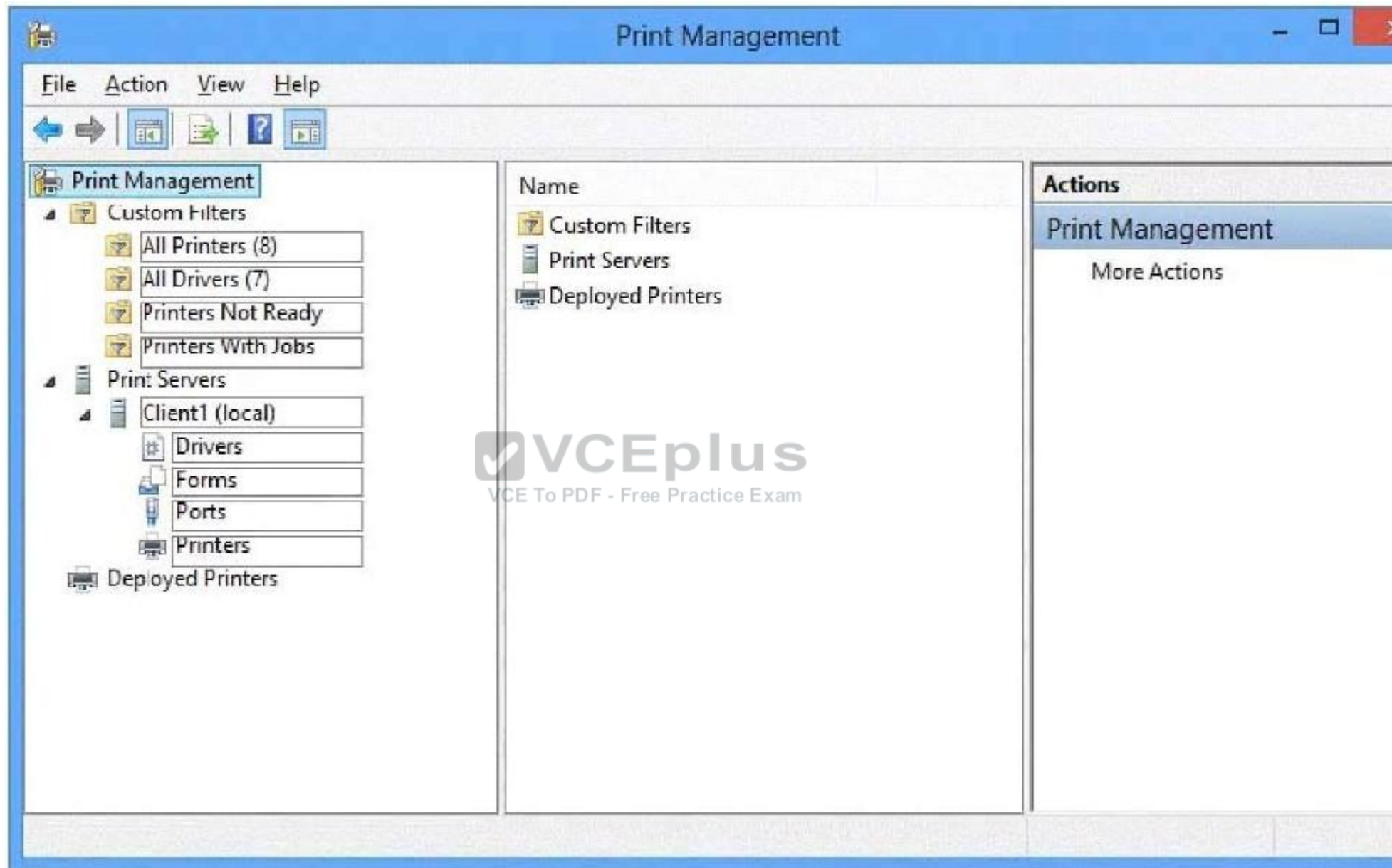
"Session1" -DisplayName "

-FilePath
-FileVirtualPath
-RequiredCommandLine
-ShowInWebAccess

"C:\Apps\App1.exe"

QUESTION 33

You administer Windows 10 Enterprise computers in your company network, including a computer named Wst1. Wst1 is configured with multiple shared printer queues. Wst1 indicates hardware errors. You decide to migrate the printer queues from Wst1 to a new computer named Client1. You export the printers on Wst1 to a file. You need to import printers from the file to Client1. From the Print Management console, which Print Management node should you select? To answer, select the appropriate node in the answer area.



A.

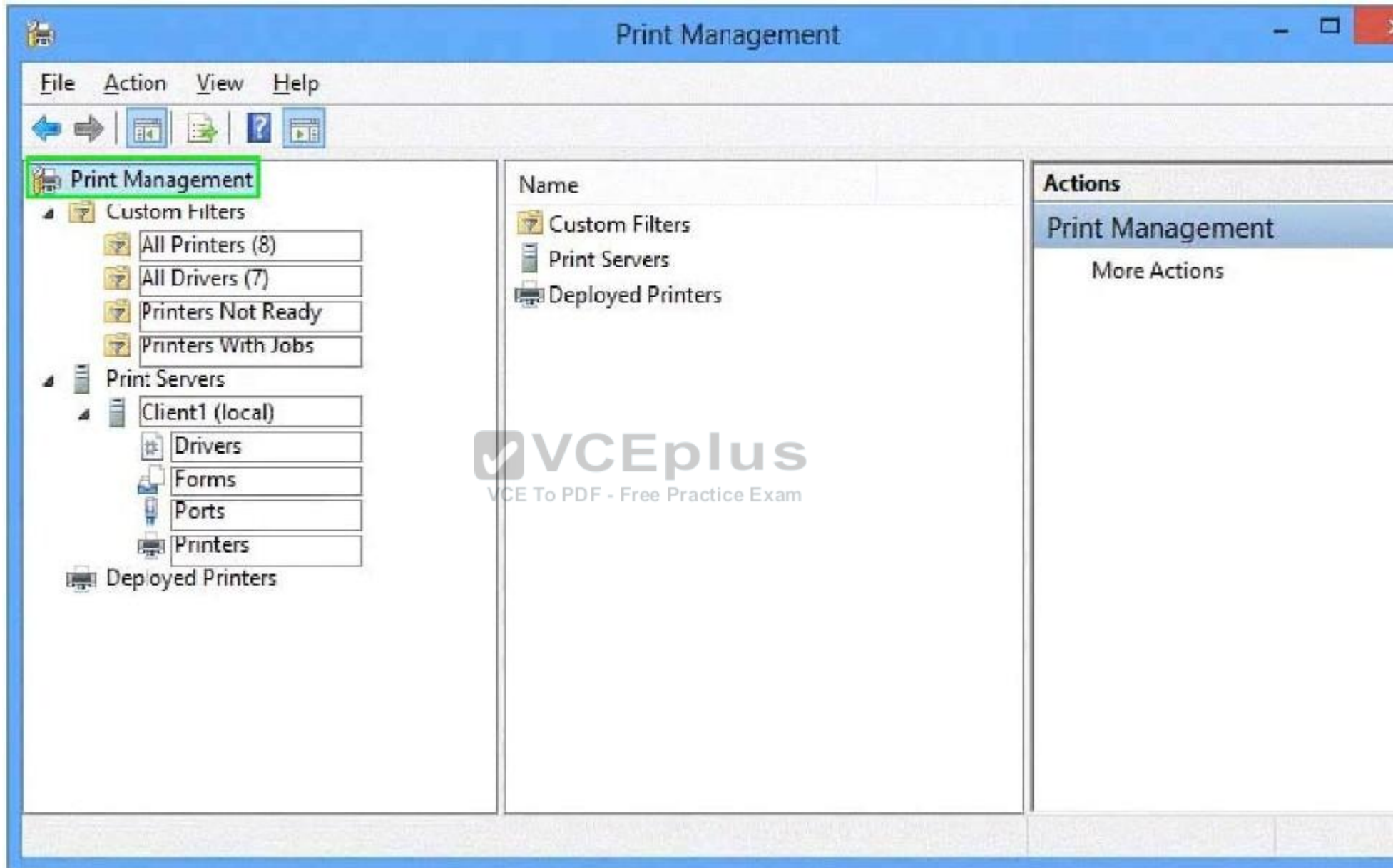
Correct Answer:

Section: (none)

Explanation

Explanation/Reference:





QUESTION 34

You administer a Windows 10 Enterprise computer. The computer has File History turned on, and system protection turned on for drive C. You accidentally delete a folder named Libraries\Customers by using the Shift+Delete keyboard shortcut. You need to restore the most recent version of the folder to its original location. Which approach should you use to restore the folder?

- A. Recycle Bin
- B. the latest restore point
- C. File History
- D. a manually selected restore point

Correct Answer: C

Section: (none)

Explanation

Explanation/Reference:

QUESTION 35

You have an image of Windows 10 Enterprise named Image1. Image1 has version number 1.0.0.0 of a custom, line-of-business universal app named App1.

You deploy Image1 to Computer1 for a user named User1.

You need to update App1 to version 1.0.0.1 on Computer1 for User1 only. What command should you run? To answer, select the appropriate options in the answer area.



Answer Area

<input type="text"/>	▼	<input type="text"/>	▼	App1_1.0.0.1
----------------------	---	----------------------	---	--------------

Answer Area

		App1_1.0.0.
Add-AppxPackage	-dependancypath	
Add-AppxProvisionedPackage	-MainPackage	
Set-AppxProvisionedDataFile	-path	

A.

Correct Answer:

Section: (none)

Explanation

Explanation/Reference:

Answer Area

		App1_1.0.0.
Add-AppxPackage	-dependancypath	
Add-AppxProvisionedPackage	-MainPackage	
Set-AppxProvisionedDataFile	-path	

QUESTION 36

You administer a Windows 10 Enterprise computer that runs Hyper-V. The computer hosts a virtual machine with multiple snapshots. The virtual machine uses one virtual CPU and 512 MB of RAM. You discover that the virtual machine pauses automatically and displays the state as paused-critical. You need to identify the component that is causing the error. Which component should you identify?

A. no virtual switch defined

- B. insufficient memory
- C. insufficient hard disk space
- D. insufficient number of virtual processors

Correct Answer: C

Section: (none)

Explanation

Explanation/Reference:

QUESTION 37

You have a computer named Computer1 that runs Windows 10 Enterprise. You plan to install the most recent updates to Computer1. You need to ensure that you can revert to the current state of Computer1 in the event that the computer becomes unresponsive after the update. What should you include in your solution?

- A. The Reset this PC option from the Recovery section of the Settings app
- B. The Sync your settings options from the Accounts section of the Settings app
- C. The Backup and Restore (Windows 7) control panel item
- D. The Refresh your PC option from the PC Settings

Correct Answer: C

Section: (none)

Explanation

Explanation/Reference:

QUESTION 38

You have a computer that runs Windows 10 Enterprise that contains the following folders:



You have a local user named User1. User1 has read and execute permission to Folder1. You need to ensure that User1 can perform the following tasks.

Create new files in Folder2. Edit all files in Folder3.

Change the permissions of files in Folder5.

The solution must use the principle of least privilege.

Which permissions should you assign to User1 on each folder? To answer, drag the appropriate permissions to the correct folders.

Each permission may be used once, more than once, or not at all. You may need to drag the split bar between panes or scroll to view content.



Permissions

Full Control

List Folder Contents

Modify

Read

Read & Execute

Write

Answer Area



Folder2:

Folder3:

Folder5:

A.

Correct Answer:

Section: (none)

Explanation

Explanation/Reference:

Permissions

Full Control

List Folder Contents

Modify

Read

Read & Execute

Write

Answer Area

Folder2: Write

Folder3: Modify

Folder5: Full Control

QUESTION 39

You plan to deploy a Microsoft Azure RemoteApp collection by using a custom template image. The image will contain Microsoft Word and Excel Office 365 ProPlus programs.

You need to install the Word and Excel programs.

The solution must minimize the amount of Internet traffic used during installation.

Which four actions should you perform in sequence?

To answer, move the appropriate actions from the list of actions to the answer area and arrange them in the correct order.

Actions

Download the Office Deployment Tool.

Modify the Click-to-Run for Office 365
Configuration.xml file.

Run **setup.exe /configure**.

Download Office 365 Deployment Readiness Tool.

Run **setup.exe /packager**.

Run **setup.exe /download**.

Answer Area



A.

Correct Answer:

Section: (none)

Explanation

Explanation/Reference:

Actions

Download the Office Deployment Tool.

Modify the Click-to-Run for Office 365 Configuration.xml file.

Run **setup.exe /configure**.

Download Office 365 Deployment Readiness Tool.

Run **setup.exe /packager**.

Run **setup.exe /download**.

Answer Area

Download the Office Deployment Tool.

Modify the Click-to-Run for Office 365 Configuration.xml file.

Run **setup.exe /download**.

Run **setup.exe /configure**.

QUESTION 40

You purchase a new Windows 10 Enterprise desktop computer.

You have four external USB hard drives.

You want to create a single volume by using the four USB drives. You want the volume to be expandable, portable and resilient in the event of failure of an individual USB hard drive.

You need to create the required volume.

What should you do?

- A. From Control Panel, create a new Storage Space across 4 USB hard drives. Set resiliency type to Three-way mirror.
- B. From Control Panel, create a new Storage Space across 4 USB hard drives. Set resiliency type to Parity.
- C. From Disk Management, create a new spanned volume.
- D. From Disk Management, create a new striped volume.

Correct Answer: B

Section: (none)

Explanation

Explanation/Reference:

QUESTION 41

Your Windows 10 Enterprise work computer is a member of an Active Directory domain. You use your domain account to log on to the computer. You use your Microsoft account to log on to a home laptop.

You want to access Windows 10 Enterprise apps from your work computer by using your Microsoft account.

You need to ensure that you are able to access the Windows 10 Enterprise apps on your work computer by logging on only once.

What should you do?

- A. Add the Microsoft account as a user on your work computer.
- B. Enable Remote Assistance on your home laptop.
- C. Connect your Microsoft account to your domain account on your work computer.
- D. Install SkyDrive for Windows on both your home laptop and your work computer.

Correct Answer: C

Section: (none)

Explanation

Explanation/Reference:

QUESTION 42

You support Windows 10 Enterprise computers that are members of an Active Directory domain. Your company policy defines the list of approved Windows Store apps that are allowed for download and installation.

You have created a new AppLocker Packaged Apps policy to help enforce the company policy. You need to test the new AppLocker Packaged Apps policy before you implement it for the entire company.

What should you do?

- A. From Group Policy, enforce the new AppLocker policy in Audit Only mode.
- B. From Group Policy, run the Group Policy Results Wizard.
- C. From Group Policy, run the Group Policy Modeling Wizard.
- D. From PowerShell, run the Get-AppLockerPolicy Effective command to retrieve the AppLocker effective policy.

Correct Answer: A

Section: (none)

Explanation

Explanation/Reference:

QUESTION 43

A company has 10 portable client computers that run Windows 10 Enterprise. The portable client computers have the network connections described in

the following table.

Network name	Connection type	Network profile
CorpWired	Wired	Private
CorpWifi	Wireless	Public
HotSpot	Public hotspot	Public

None of the computers can discover other computers or devices, regardless of which connection they use. You need to configure the connections so that the computers can discover other computers or devices only while connected to the CorpWired or CorpWifi connections.

What should you do on the client computers?

- A. For the CorpWifi connection, select Yes, turn on sharing and connect to devices.
- B. Turn on network discovery for the Public profile.
- C. Change the CorpWired connection to public. Turn on network discovery for the Public profile.
For the HotSpot connection, select No, don't turn on sharing or connect to devices.
- D. For the CorpWired connection, select Yes, turn on sharing and connect to devices.
- E. Turn on network discovery for the Private profile.

Correct Answer: C

Section: (none)

Explanation

Explanation/Reference:

QUESTION 44

Your network contains an Active Directory domain named contoso.com. Contoso.com is synchronized to a Microsoft Azure Active Directory. You have a Microsoft Intune subscription. Your company plans to implement a Bring Your Own Device (BYOD) policy. You will provide users with access to corporate data from their personal iOS devices.

You need to ensure that you can manage the personal iOS devices.

What should you do first?

- A. Install the Company Portal app from the Apple App Store.
- B. Create a device enrollment manager account.
- C. Set a DNS alias for the enrollment server address.
- D. Configure the Intune Service to Service Connector for Hosted Exchange.
- E. Enroll for an Apple Push Notification (APN) certificate.

Correct Answer: E

Section: (none)

Explanation

Explanation/Reference:

QUESTION 45

You use a Windows 8.1 tablet. The tablet receives Windows Update updates automatically from the Internet. The tablet has Wi-Fi and is connected to a 3G mobile broadband Wi-Fi hot spot. You need to minimize data usage while connected to this hot spot. What should you do?

- A. Turn on Airplane Mode.
- B. Disable File and Print Sharing for mobile broadband connections.
- C. Configure the interface metric of IP settings for Wi-Fi connection as 1.
- D. Edit the Inbound Rule of Windows Firewall, and then disable Internet Control Message Protocol (ICMP) traffic.
- E. Configure the broadband connection as a metered network.

Correct Answer: E

Section: (none)

Explanation

Explanation/Reference:

QUESTION 46

You have a computer named Computer1 that runs Windows 10 Enterprise. You need to identify the locations that you can select as a File History drive. What are two possible locations? Each correct answer presents a complete solution?

- A. the operating system volume
- B. an unformatted partition
- C. a non-system volume
- D. a network share

Correct Answer: CD

Section: (none)

Explanation

Explanation/Reference:

QUESTION 47

You manage Microsoft Intune for a company named Contoso. You have an administrative computer named Computer1 that runs Windows 10 Enterprise. You need to add a Windows Store universal app named App1 to the Company Portal Apps list for all users.

Which three actions should you perform in sequence?

To answer, move the appropriate actions from the list of actions to the answer area and arrange them in the correct order.

Actions

From the Microsoft Intune administration console, manage the deployment settings of App1.

Log on to Computer1 by using your domain account.

On Computer1, run the Add Software - Microsoft Intune Software Publisher wizard.

From Windows Store, install App1 on Computer1.

Log on to Computer1 by using the built-in Administrator account.

Answer Area

A.

Correct Answer:

Section: (none)

Explanation

Explanation/Reference:

Actions

From the Microsoft Intune administration console, manage the deployment settings of App1.

Log on to Computer1 by using your domain account.

On Computer1, run the Add Software - Microsoft Intune Software Publisher wizard.

From Windows Store, install App1 on Computer1.

Log on to Computer1 by using the built-in Administrator account.

**Answer Area**

Log on to Computer1 by using your domain account.

On Computer1, run the Add Software - Microsoft Intune Software Publisher wizard.

From the Microsoft Intune administration console, manage the deployment settings of App1.

QUESTION 48

You are the desktop administrator for a small company.

Your workgroup environment consists of Windows 10 Enterprise computers. You want to prevent 10 help desk computers from sleeping. However, you want the screens to shut off after a certain period of time if the computers are not being used. You need to configure and apply a standard power configuration scheme for the 10 help desk computers on your network.

Which two actions should you perform? Each correct answer presents part of the solution.

- A. Import the power scheme by using `POWERCFG /IMPORT` on each of the remaining help desk computers.
Set the power scheme to Active by using `POWERCFG /S`.
- B. Use `POWERCFG /X` on one help desk computer to modify the power scheme to meet the requirements.
Export the power scheme by using `POWERCFG /EXPORT`.
- C. Use `POWERCFG /S` on one help desk computer to modify the power scheme to meet the requirements.
Export the power scheme by using `POWERCFG /EXPORT`.
- D. Import the power scheme by using `POWERCFG /IMPORT` on each of the remaining help desk computers.
Set the power scheme to Active by using `POWERCFG /X`.

Correct Answer: AB

Section: (none)

Explanation**Explanation/Reference:****QUESTION 49**

You support desktop computers and tablets that run Windows 8 Enterprise. All of the computers are able to connect to your company network from the Internet by using DirectAccess. Your company wants to deploy a new application to the tablets. The deployment solution must meet the following requirements:

The application is able to access files stored on an internal solid-state drive (SSD) on the tablets.

The application is isolated from other applications.

The application uses the least amount of disk space on the tablet.

You need to deploy the new application to the tablets.

What should you do?

- A. Deploy the application as an Application Virtualization (App-V) package. Install the App-V 4.6 client on the tablets.
- B. Deploy the application as a published application on the Remote Desktop server. Create a Remote Desktop connection on the tablets.
- C. Install the application on a local drive on the tablets.
- D. Install the application in a Windows To Go workspace.
- E. Install Hyper-V on tablets. Install the application on a virtual machine.
- F. Publish the application to Windows Store.
- G. Install the application within a separate Windows 8 installation in a virtual hard disk (VHD) file. Configure the tablets with dual boot.
- H. Install the application within a separate Windows 8 installation in a VHDX file. Configure tablets with dual boot.

Correct Answer: B

Section: (none)

Explanation**Explanation/Reference:****QUESTION 50**

You manage a network that includes Windows 10 Enterprise computers. All of the computers on the network are members of an Active Directory domain. The company recently proposed a new security policy that prevents users from synchronizing applications settings, browsing history, favorites, and passwords from the computers with their Microsoft accounts. You need to enforce these security policy requirements on the computers.

What should you do?

- A. On the Group Policy Object, configure the Accounts: Block Microsoft accounts Group Policy setting to Users can't add Microsoft accounts.
- B. On the Group Policy Object, configure the Accounts: Block Microsoft accounts Group Policy setting to Users can't add or log on with Microsoft accounts.

- C. From each computer, navigate to Change Sync Settings and set the Sync Your Settings options for Apps, Browser, and Passwords to Off.
- D. From each computer, navigate to Change Sync Settings and set the Sync Your Settings option to Off.

Correct Answer: B

Section: (none)

Explanation

Explanation/Reference:

QUESTION 51

You have a Windows 10 Enterprise computer named Computer1. Computer1 has File History enabled. You create a folder named Folder1 in the root of the C: drive.

You need to ensure that Folder1 is protected by File History. What are two possible ways to achieve the goal? Each correct answer presents a complete solution.

- A. From File Explorer, include Folder1 in an existing library.
- B. Modify the Advanced settings from the File History Control Panel item.
- C. From the Settings app, modify the Backup options.
- D. From File Explorer, modify the system attribute of Folder1.

Correct Answer: AC

Section: (none)

Explanation

Explanation/Reference:

QUESTION 52

A company has an Active Directory Domain Services (AD DS) domain. All client computers run Windows 10 Enterprise. Some computers have a Trusted Platform Module (TPM) chip.

You need to configure a single Group Policy object (GPO) that will allow Windows BitLocker Drive Encryption on all client computers.

Which two actions should you perform? Each correct answer presents part of the solution.

- A. Enable the Require additional authentication at startup policy setting.
- B. Enable the Enforce drive encryption type on operating system drives policy setting.
- C. Enable the option to allow BitLocker without a compatible TPM.
- D. Configure the TPM validation profile to enable Platform Configuration Register indices (PCRs) 0, 2, 4, and 11.

Correct Answer: AC

Section: (none)

Explanation

Explanation/Reference:

