

70-697.exam.180q

Number: 70-697  
Passing Score: 800  
Time Limit: 120 min



**Website:** <https://vceplus.com>  
**VCE to PDF Converter:** <https://vceplus.com/vce-to-pdf/>  
**Facebook:** <https://www.facebook.com/VCE.For.All.VN/>  
**Twitter :** [https://twitter.com/VCE\\_Plus](https://twitter.com/VCE_Plus)

<https://vceplus.com/>

70-697

### Configuring Windows Devices

#### Sections

1. Manage Identity
2. Plan Desktop and Device Deployment
3. Plan and Implement a Microsoft 365 Solution
4. Configure Networking
5. Configure Storage
6. Manage Data Access and Protection
7. Manage Remote Access

- 8. Manage Apps
- 9. Manage Updates and Recovery

### Exam A

#### QUESTION 1

A company has an Active Directory Domain Services (AD DS) domain. All client computers run Windows 10 Enterprise and are joined to the domain.

Corporate policy prohibits Homegroups on the corporate network.

You need to ensure that client computer network adapter settings do not support joining a Homegroup.

What should you do?

- A. Disable IPv6.
- B. Disable IPv4.
- C. Enable IPv6.
- D. Enable IPv4.

**Correct Answer:** A

**Section:** Manage Identity

**Explanation**



**Explanation/Reference:**

References: <https://h30434.www3.hp.com/t5/Notebook-Wireless-and-Networking/Windows-10-can-t-set-up-a-homegroup-on-this-computer/td-p/5581558>

#### QUESTION 2

You support Windows 10 Enterprise desktop computers and tablets that are members of an Active Directory domain. The domain includes Active Directory Certificate Services. All users use virtual smart cards to log on to their computers.

A domain user wants to log on to both his desktop computer and his tablet computer by using the same domain user account.

You need to configure the desktop and tablet computers to support two-factor authentication for the same domain user account.

<https://vceplus.com/>

What should you do?

- A. Enroll the user for two separate certificates based on the Smartcard Logon template. Install one certificate in a virtual smart card on each of the user's computers/

- B. After the user has logged on to one computer, disable the Trusted Platform Module (TPM) on the second computer. Run the tpmvscmgr.exe utility on each of the computers.
- C. Issue a temporary physical smart card. Use this smart card for an initial logon on each computer, then disconnect the tablet from the office network and destroy the temporary smart card.
- D. Export the private key from the desktop computer. Import the private key to the tablet.

**Correct Answer:** A

**Section:** Manage Identity

**Explanation**

**Explanation/Reference:**

### QUESTION 3

You administer Windows 10 Enterprise computers for a software development company.

The marketing department is going to meet a potential customer to demonstrate the product. You want to configure a laptop that has a stand-alone virtual machine that runs Windows 10 Enterprise and the latest build of your software.

You need to enable BitLocker on the system drive of the virtual machine.

What should you do first?

- A. Join the virtual machine to an Active Directory Domain Services (AD DS) domain.
- B. Activate Windows.
- C. Turn on the **Require additional authentication at startup** local policy.
- D. Turn off the **Require additional authentication at startup** local policy.

**Correct Answer:** C

**Section:** Manage Identity

**Explanation**

**Explanation/Reference:**

### QUESTION 4

Your network contains an Active Directory domain named contoso.com.

A user receives the following error message when attempting to sign in to a computer: "The trust relationship between this workstation and the primary domain failed."

You need to ensure that the user can sign in to the computer by using a domain user account.

Which tool should you use?

- A. Netstat
- B. Netsh
- C. Netdom
- D. Netcfg

**Correct Answer:** C

**Section:** Manage Identity

**Explanation**

**Explanation/Reference:**

References:

<https://www.petenetlive.com/KB/Article/0000504>

### QUESTION 5

You support Windows 10 Enterprise computers that are members of an Active Directory domain. All of the computers have a dedicated recovery partition.

A computer indicates that the domain is unavailable. The password of a local administrator account on the computer is unknown. You need to reset the password for the local administrator account on the computer.

What should you do?

- A. Run **Windows To Go workspace** from a USB flash drive.
- B. Run the Windows 10 Enterprise installation wizard from a USB flash drive.
- C. Run **Microsoft Diagnostic and Recovery Tool (DaRT)** from a USB flash drive.
- D. Run **Windows Recovery Environment (WinRE)** from a recovery partition.

**Correct Answer:** C

**Section:** Manage Identity

**Explanation**

**Explanation/Reference:**

References:

<https://www.top-password.com/knowledge/reset-windows-10-password.html>

### QUESTION 6

A company has an Active Directory Domain Services (AD DS) domain with Windows 10 Enterprise client computers.

You need to minimize the amount of Trusted Platform Module (TPM) authorization information that is stored in the registry.

What should you do?

- A. Create a Group Policy Object (GPO) that enables the **Turn on TPM Local Encryption** policy setting.
- B. Enable **Platform Configuration Register indices (PCRs) 0, 2, 4, and 11** for the **Configure TPM validation profile for native UEFI firmware** configuration policy setting.
- C. Create a Group Policy Object (GPO) that disables the **Configure the level of TPM owner authorization information available to operating system** policy setting.
- D. Create a Group Policy Object (GPO) that sets the **Configure the level of TPM owner authorization information available to operating system** policy setting to **None**.

**Correct Answer:** D

**Section:** Manage Identity

**Explanation**

**Explanation/Reference:** References: [https://docs.microsoft.com/en-us/previous-versions/windows/it-pro/windows-8.1-and-8/jj679889\(v=ws.11\)#BKMK\\_tpmgp\\_oauthos](https://docs.microsoft.com/en-us/previous-versions/windows/it-pro/windows-8.1-and-8/jj679889(v=ws.11)#BKMK_tpmgp_oauthos)

#### QUESTION 7

You have a computer that runs Windows 10.

You plan to configure Windows Hello.

You need to configure the PIN complexity rules for the computer.

Which policy setting should you modify?

- A. Credential User Interface
- B. Microsoft Passport for Work
- C. Smart Card
- D. Biometrics
- E. Windows Logon Options

**Correct Answer:** B

**Section:** Manage Identity

**Explanation**

**Explanation/Reference:**

References: <http://www.kapilarya.com/how-to-configure-pin-complexity-in-windows-10>

#### QUESTION 8

You have a computer named C1 that runs Windows 10 Enterprise. C1 is member of a Homegroup.

You plan to join C1 to MS Azure AD tenant named T1.

You need to ensure that an Azure AD user named User1 is a member of the local Administrators group on C1, when C1 is joined to Azure AD.

What should you do?

- A. From azure classic portal modify the membership of T1 global admin group
- B. From the settings app on C1, set up assigned access
- C. From settings app on C1, modify the **Work access** settings
- D. From settings app on C1, modify the **Family & other user** settings

**Correct Answer:** A

**Section:** Manage Identity

**Explanation**

**Explanation/Reference:**

References:

<https://docs.microsoft.com/en-us/azure/active-directory-domain-services/active-directory-ds-admin-guide-join-windows-vm>  
<http://www.tomsitpro.com/articles/windows-10-azure-active-directory-domain,2-27.html>

## QUESTION 9

**Note:** This question is part of a series of questions that present the same scenario. Each question in the series contains a unique solution that might meet the stated goals. Some question sets might have more than one correct solution, while others might not have a correct solution.

**After you answer a question in this section, you will NOT be able to return to it. As a result, these questions will not appear in the review screen.**

You administer devices in your corporate environment. The company allows employees to bring their own devices (BYOD). All BYOD devices must run Windows 10. For employees who elect to not use BYOD, the company provides a corporate laptop.

The company has a Microsoft Intune subscription and all BYOD devices have the Intune client installed. None of the BYOD devices are joined to the domain. All the corporate standard devices are managed by System Center Configuration Manager (SCCM).

You have an application that was developed in house that must be installed on all the BYOD devices.

The application must be installed automatically on the BYOD devices without any user intervention.

**Solution:** You download and install a sideloading product activation key on all of the BYOD devices. You upload the application to the Intune storage and configure the app deployment action as required install.

Does the solution meet the goal?

- A. Yes
- B. No

**Correct Answer:** B

**Section:** Manage Identity

**Explanation**

**Explanation/Reference:**

#### QUESTION 10

**Note:** This question is part of a series of questions that present the same scenario. Each question in the series contains a unique solution that might meet the stated goals. Some question sets might have more than one correct solution, while others might not have a correct solution.

**After you answer a question in this section, you will NOT be able to return to it. As a result, these questions will not appear in the review screen.**

You administer devices in your corporate environment. The company allows employees to bring their own devices (BYOD). All BYOD devices must run Windows 10. For employees who elect to not use BYOD, the company provides a corporate laptop.

The company has a Microsoft Intune subscription and all BYOD devices have the Intune client installed. None of the BYOD devices are joined to the domain. All the corporate standard devices are managed by System Center Configuration Manager (SCCM).

You have an application that was developed in house that must be installed on all the BYOD devices.

The application must be installed automatically on the BYOD devices without any user intervention.

Solution: You create an SCCM application and deploy it to the All Mobile Devices collection.

Does the solution meet the goal?

A. Yes

B. No

**Correct Answer:** B

**Section:** Manage Identity

**Explanation**

**Explanation/Reference:**

#### QUESTION 11

**Note:** This question is part of a series of questions that present the same scenario. Each question in the series contains a unique solution that might meet the stated goals. Some question sets might have more than one correct solution, while others might not have a correct solution.

**After you answer a question in this section, you will NOT be able to return to it. As a result, these questions will not appear in the review screen.**

You administer devices in your corporate environment. The company allows employees to bring their own devices (BYOD). All BYOD devices must run Windows 10. For employees who elect to not use BYOD, the company provides a corporate laptop.

The company has a Microsoft Intune subscription and all BYOD devices have the Intune client installed. None of the BYOD devices are joined to the domain. All the corporate standard devices are managed by System Center Configuration Manager (SCCM).

You have an application that was developed in house that must be installed on all the BYOD devices.

The application must be installed automatically on the BYOD devices without any user intervention.

Solution: You upload the app to the Intune storage and make the app available.

Does the solution meet the goal?

- A. Yes
- B. No

**Correct Answer: A**

**Section: Manage Identity**

**Explanation**

**Explanation/Reference:**

References: <https://docs.microsoft.com/en-us/intune/lob-apps-windows>



## QUESTION 12

Your network contains an Active Directory domain. The domain contains 100 computers that run Windows 10.

You plan to develop a line-of-business application and to deploy the application by using Windows Store for Business.

You need to ensure that users can see the private store of your company when they sign in to the Windows Store for Business.

What should you do first?



<https://vceplus.com/>

- A. Provision a Windows Dev Center dev account for each user



- B. Assign the Microsoft Store for Business Admin role to each user.
- C. Provision a Microsoft Azure Active Directory (Azure AD) account for each user.
- D. Provision a Microsoft account for each user.
- E. Assign the Microsoft Store for Business Purchaser role to each user.

**Correct Answer: C**

**Section: Manage Identity**

**Explanation**

**Explanation/Reference:**

References: <https://www.sepago.de/blog/windows-10-enterprise-serie-windows-business-store/>

### QUESTION 13

**Note: This question is part of a series of questions that present the same scenario. Each question in the series contains a unique solution that might meet the stated goals. Some question sets might have more than one correct solution, while others might not have a correct solution.**

**After you answer a question in this section, you will NOT be able to return to it. As a result, these questions will not appear in the review screen.**

You administer devices in your corporate environment. The company allows employees to bring their own devices (BYOD). All BYOD devices must run Windows 10. For employees who elect to not use BYOD, the company provides a corporate laptop.

The company has a Microsoft Intune subscription and all BYOD devices have the Intune client installed. None of the BYOD devices are joined to the domain. All the corporate standard devices are managed by System Center Configuration Manager (SCCM).

You have an application that was developed in house that must be installed on all the BYOD devices.

The application must be installed automatically on the BYOD devices without any user intervention.

Solution: You download and install a sideloading product activation key on all of the BYOD devices. You upload the application to the Intune storage and configure the app deployment action as available install.

Does the solution meet the goal?

- A. Yes
- B. No

**Correct Answer: B**

**Section: Manage Identity**

**Explanation**

**Explanation/Reference:**

**QUESTION 14**

You have a computer named Client1. Client1 is joined to an Active Directory domain.

You need to join Client1 to an Azure Active Directory (Azure AD) tenant.

What should you do?

- A. From the Local Group Policy Editor, modify the Add workstations to domain policy.
- B. From the network adapter properties, modify the DNS suffix.
- C. From the System in the Settings app, modify the sign-in options.
- D. From System in Control Panel, configure the computer to be a member of a workgroup.

**Correct Answer: C**

**Section: Manage Identity**

**Explanation**

**Explanation/Reference:**

**QUESTION 15**

Your network contains an Azure AD domain. You have a subscription to Microsoft Office 365.

Users discover that they must change their Azure AD password more frequently than their Office 365 password.

You need to ensure that the password policies for Office 365 and for Active Directory are the same.

What should you do?

- A. From the Microsoft Azure Active Directory Module for Windows PowerShell, run **Set-MsolDomainAuthentication**.
- B. From the Office 365 Admin center, in Settings, click **Security & privacy**.
- C. From the Office 365 portal, under Billing, click **Subscriptions**.
- D. From the Microsoft Azure Active Directory Module for Windows PowerShell, run **Set-MsolCompanySettings**.

**Correct Answer: D**

**Section: Manage Identity**

**Explanation**

**Explanation/Reference:**

Explanation:

Directory Synchronization must be enabled. This can be performed using the Set-MsolCompanySettings cmdlet.

**QUESTION 16**

You are the desktop administrator for a small company.

Your workgroup environment consists of Windows 10 Enterprise computers. You want to prevent 10 help desk computers from sleeping. However, you want the screens to shut off after a certain period of time if the computers are not being used.

You need to configure and apply a standard power configuration scheme for the 10 help desk computers on your network.

Which two actions should you perform? Each correct answer presents part of the solution.

- A. Import the power scheme by using POWERCFG /IMPORT on each of the remaining help desk computers. Set the power scheme to Active by using POWERCFG /S.
- B. Use POWERCFG /X on one help desk computer to modify the power scheme to meet the requirements. Export the power scheme by using POWERCFG /EXPORT.
- C. Use POWERCFG /S on one help desk computer to modify the power scheme to meet the requirements. Export the power scheme by using POWERCFG /EXPORT.
- D. Import the power scheme by using POWERCFG /IMPORT on each of the remaining help desk computers. Set the power scheme to Active by using POWERCFG /X.

**Correct Answer:** AB

**Section:** Plan Desktop and Device Deployment

**Explanation**



**Explanation/Reference:**

Explanation:

You can use the Powercfg.exe tool to control power settings and configure computers to default to Hibernate or Standby modes.

In this question, we use POWERCFG /X on one help desk computer to modify the power scheme to meet our requirements. After configuring the required settings, we can export the power scheme settings to a file by using POWERCFG /EXPORT.

We can then import the power scheme from the file on each of the remaining help desk computers by using POWERCFG /IMPORT. After importing the power scheme on the remaining computers, we need to set the new power scheme to be the active power scheme by using POWERCFG /S.

References: <https://docs.microsoft.com/en-us/windows-hardware/design/device-experiences/powercfg-command-line-options>

#### QUESTION 17

A company has an Active Directory Domain Services (AD DS) domain. All client computers run Windows 10 Enterprise. Some computers have a Trusted Platform Module (TPM) chip.

You need to configure a single Group Policy object (GPO) that will allow Windows BitLocker Drive Encryption on all client computers.

Which two actions should you perform? Each correct answer presents part of the solution.

- A. Enable the **Require additional authentication at startup** policy setting.
- B. Enable the **Enforce drive encryption type on operating system drives** policy setting.

- C. Enable the option to allow BitLocker without a compatible TPM.
- D. Configure the TPM validation profile to enable **Platform Configuration Register indices (PCRs) 0, 2, 4, and 11**.

**Correct Answer:** AC

**Section:** Plan Desktop and Device Deployment

**Explanation**

**Explanation/Reference:**

Explanation:

We need to allow Windows BitLocker Drive Encryption on all client computers (including client computers that do not have Trusted Platform Module (TPM) chip).

We can do this by enabling the option to allow BitLocker without a compatible TPM in the group policy. The 'Allow BitLocker without a compatible TPM' option is a checkbox in the 'Require additional authentication at startup' group policy setting. To access the 'Allow BitLocker without a compatible TPM' checkbox, you need to first select Enabled on the 'Require additional authentication at startup' policy setting.

References: <http://www.howtogeek.com/howto/6229/how-to-use-bitlocker-on-drives-without-tpm/>

#### **QUESTION 18**

Employees are permitted to bring personally owned portable Windows 10 Enterprise computers to the office. They are permitted to install corporate applications by using the management infrastructure agent and access corporate email by using the Mail app.

An employee's personally owned portable computer is stolen.

You need to protect the corporate applications and email messages on the computer.

Which two actions should you perform? Each correct answer presents part of the solution.

- A. Prevent the computer from connecting to the corporate wireless network.
- B. Change the user's password.
- C. Disconnect the computer from the management infrastructure.
- D. Initiate a remote wipe.

**Correct Answer:** BD

**Section:** Plan Desktop and Device Deployment

**Explanation**

**Explanation/Reference:**

Explanation:

The personally owned portable Windows 10 Enterprise computers being managed by the management infrastructure agent enables the use of remote wipe. By initiating a remote wipe, we can erase all company data including email from the stolen device.

Microsoft Intune provides selective wipe, full wipe, remote lock, and passcode reset capabilities. Because mobile devices can store sensitive corporate data and provide access to many corporate resources, you can issue a remote device wipe command from the Microsoft Intune administrator console to wipe a lost or stolen device.

Changing the user's password should be the first step. If the stolen computer is accessed before the remote wipe happens, the malicious user could be able to access company resources if the laptop has saved passwords.

References: <https://technet.microsoft.com/en-gb/library/jj676679.aspx>

### QUESTION 19

You use a Windows 8.1 tablet. The tablet receives Windows Update updates automatically from the Internet.

The tablet has Wi-Fi and is connected to a 3G mobile broadband Wi-Fi hot spot.

You need to minimize data usage while connected to this hot spot.

What should you do?

- A. Turn on **Airplane Mode**.
- B. Disable **File and Print Sharing for mobile broadband connections**.
- C. Configure the interface metric of IP settings for Wi-Fi connection as 1.
- D. Edit the Inbound Rule of Windows Firewall, and then disable **Internet Control Message Protocol (ICMP)** traffic.
- E. Configure the broadband connection as a metered network.

**Correct Answer: E**

**Section: Plan Desktop and Device Deployment**

**Explanation**

#### **Explanation/Reference:**

Explanation:

You can limit the bandwidth used by the broadband connection by configuring it as a metered network. A metered network is a network where data downloaded is 'metered' (measured) and you are charged for the amount of data downloaded.

Setting a connection as metered prevents Windows from automatically using bandwidth in a number of ways including the following:

- Disables automatic downloading of Windows updates: Windows won't automatically download updates from Windows Update on metered Internet connections. You'll get a "Download" button you can click whenever you want to install updates.
- Disables automatic downloading of app updates: The Windows Store won't automatically download updates for your installed "Store apps" on metered connections, either. Desktop apps like Chrome, Firefox, and others will continue updating themselves normally.
- Tiles may not update: Microsoft says that the live tiles on your Start menu or Start screen "may" stop updating on a metered connection:

References: <http://www.howtogeek.com/226722/how-when-and-why-to-set-a-connection-as-metered-on-windows-10/>

**QUESTION 20**  
HOTSPOT

You plan to use a Group Policy to configure the power settings of several laptops.

You need to ensure that the laptops meet the following requirements:

- Enter hibernation mode when the lid is closed.
- Enter sleep mode when the battery level is critical.

Which two Power Management Group Policy settings should you modify? To answer, select the appropriate settings in the answer area.

**Hot Area:**

**Answer Area**



Correct Answer:

## Answer Area



**Section: Plan Desktop and Device Deployment**  
**Explanation**

**Explanation/Reference:**

References:

<http://www.thewindowsclub.com/change-critical-low-level-battery-action-windows-8-7> **QUESTION 21**

Your company has a standard power scheme for the sales team. You are replacing a laptop for a sales associate.

You import the power scheme onto the new laptop.

You need to apply the power scheme.

What should you do?

- A. Modify the power scheme under **Power and Sleep** settings.
- B. Run the **gpupdate /F** command.
- C. Run the **powercfg /S** command.
- D. Modify the advanced power settings.

**Correct Answer: C**

**Section: Plan Desktop and Device Deployment**

**Explanation**

**Explanation/Reference:**

Explanation:

You can use the powercfg.exe tool to control power schemes (also named power plans) to use the available sleep states, to control the power states of individual devices, and to analyze the system for common energy-efficiency and battery-life problems.

The powercfg /SETACTIVE or powercfg /S commands make the specified power scheme active on the system.

Note: To Import a Power Plan

1. Open an elevated command prompt.
2. Type the command below into the command prompt, and press Enter to export the power plan.  
powercfg -import "Full path of .pow file"

Note: Substitute Full path of .pow file in the command above with the actual full path of the .pow file of the power plan you exported.

3. When finished, you can close the command prompt if you like.
4. Users on the PC will now be able to select the imported power plan as their active power plan

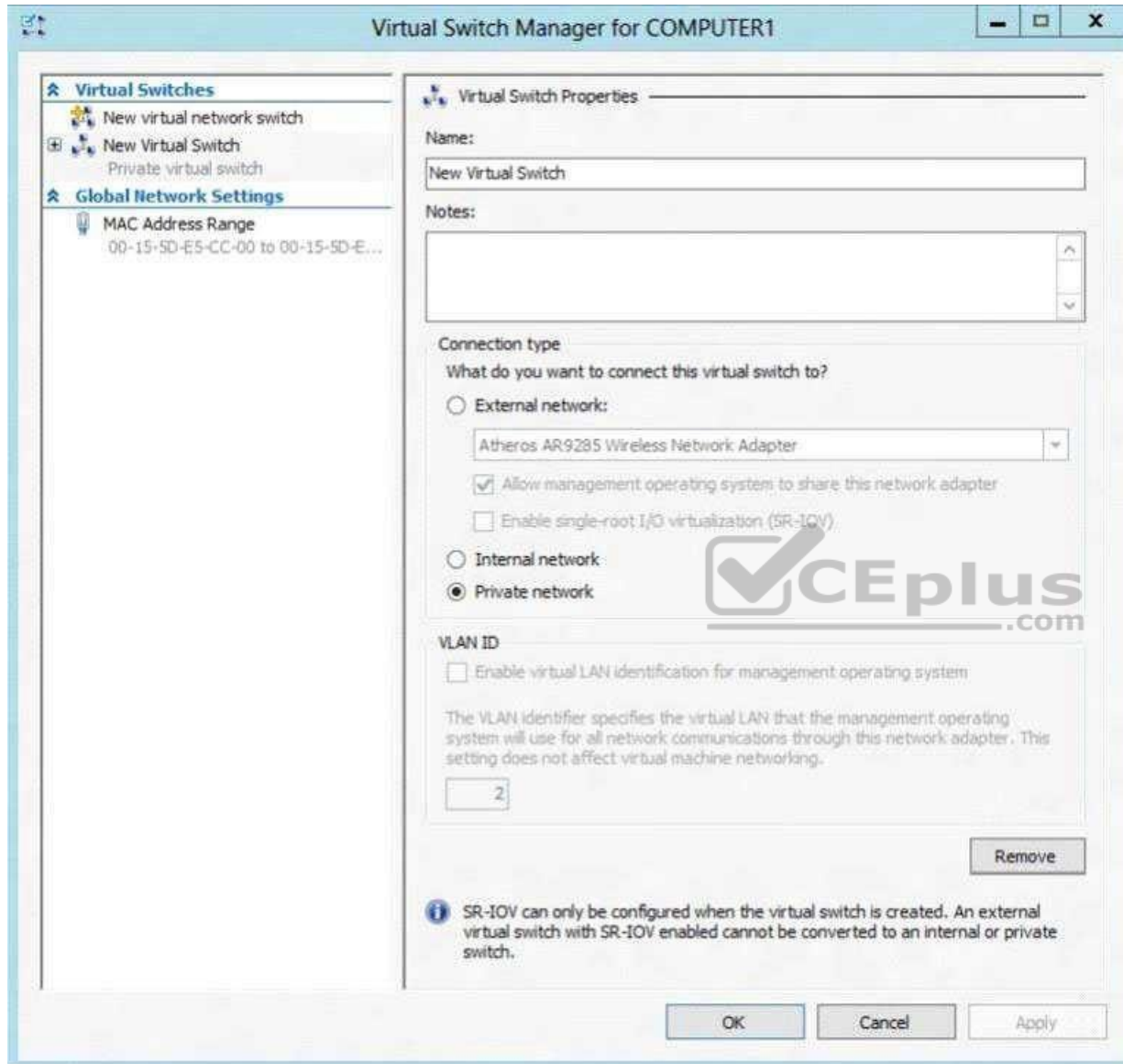
References: [https://msdn.microsoft.com/en-us/library/dn898599\(v=vs.85\).aspx](https://msdn.microsoft.com/en-us/library/dn898599(v=vs.85).aspx) <https://docs.microsoft.com/en-us/windows-hardware/design/device-experiences/powercfg-command-line-options>

## QUESTION 22

A company has an Active Directory Domain Services (AD DS) domain with one physical domain controller. All client computers run Windows 10 Enterprise.

A client computer hosts a Windows 10 Enterprise virtual machine (VM) test environment. The VMs are connected to a private virtual switch that is configured as shown in the Virtual Switch Manager exhibit.





The VMs are unable to connect to the domain controller. You have the following requirements:

- Configure the test environment to allow VMs to communicate with the domain controller.
- Ensure that the VMs can communicate with other VMs in the test environment when the domain controller is unavailable.

You need to meet the requirements.

What should you do first?

- A. Create a new virtual switch with an Internal Network connection type.
- B. Change the connection type of the private virtual switch to **Internal only**.
- C. Create a new virtual switch with a Private Network connection type.
- D. Create a new virtual switch with an External Network connection type.

**Correct Answer:** D

**Section:** Plan Desktop and Device Deployment

**Explanation**

**Explanation/Reference:**

#### QUESTION 23

You have a computer that runs Windows 10 and has BitLocker Drive Encryption (BitLocker) configured.

You need to change the BitLocker PIN for the drive.

What should you run?

- A. the **bitsadmin.exe** command
- B. the **Enable-BitLocker** cmdlet
- C. the **Add-BitLockerKeyProtector** cmdlet
- D. the **Set-PcsvDeviceUserPassword** cmdlet

**Correct Answer:** C

**Section:** Plan Desktop and Device Deployment

**Explanation**

**Explanation/Reference:**

#### QUESTION 24

You have a computer that runs Windows 10 and has BitLocker Drive Encryption (BitLocker) configured.

You need to change the BitLocker PIN for the drive.

What should you run?

- A. the **repair-bde.exe** Windows script file
- B. the **Enable-BitLocker** cmdlet
- C. the **bitsadmin.exe** command

D. the **manage-bde.exe** command

**Correct Answer:** D

**Section:** Plan Desktop and Device Deployment

**Explanation**

**Explanation/Reference:**

References: [https://technet.microsoft.com/en-us/library/dd875513\(v=ws.10\).aspx#BKMK\\_changepin](https://technet.microsoft.com/en-us/library/dd875513(v=ws.10).aspx#BKMK_changepin)

#### QUESTION 25

A company has an Active Directory Domain Services (AD DS) domain. All client computers run Windows 10 Enterprise.

You are configuring security for a portable client computer that does not have a Trusted Platform Module (TPM) chip installed.

You need to configure local Group Policy to turn on Windows BitLocker Drive Encryption on the computer.

Which two actions should you perform? Each correct answer presents part of the solution.

**NOTE:** Each correct selection is worth one point.

- A. Enable the **Enforce drive encryption type on operating system drives** policy setting.
- B. Enable the option to **Allow BitLocker without a compatible TPM**.
- C. Enable the **Require additional authentication at startup** policy setting.
- D. Configure the TPM validation profile to enable **Platform Configuration Register indices (PCRs) 0, 2, 4, and 11**.

**Correct Answer:** BC

**Section:** Plan Desktop and Device Deployment

**Explanation**

**Explanation/Reference:**

References: <https://www.howtogeek.com/howto/6229/how-to-use-bitlocker-on-drives-without-tpm/>

#### QUESTION 26

DRAG DROP

You administer Windows 7 and Windows 10 Enterprise computers. You run an application that saves files that contain local settings unique to each user.



<https://vceplus.com/>

You want to allow users to synchronize settings for an application to any enterprise computer when they log on to the enterprise computer.

You need to implement a solution that will move a user's settings files to any computer. You also need to ensure that you can roll back the changes if necessary.

Which required task or tasks should you perform with each approach? To answer, drag the appropriate required task to the corresponding approach. Each required task may be used once, more than once, or not at all. You may need to drag the split bar between panes or scroll to view content.

**NOTE:** Each correct selection is worth one point.

**Select and Place:**



### Required Tasks

Create a setting location template.

Place the settings location template.

Enable Folder Redirection.

Deploy the User Experience Virtualization (UE-V) Agent.

### Answer Area

Generator

Template Catalog Path

Microsoft Desktop Optimization Pack (MDOP)

Required Task

Required Task

Required Task

**Correct Answer:**

### Required Tasks





### Answer Area

Generator

Deploy the User Experience Virtualization (UE-V) Agent.

Template Catalog Path

Create a setting location template.

Microsoft Desktop Optimization Pack (MDOP)

Place the settings location template.

**Section: Plan Desktop and Device Deployment**  
**Explanation**

**Explanation/Reference:**

References: <https://docs.microsoft.com/en-us/microsoft-desktop-optimization-pack/uev-v2/prepare-a-ue-v-2x-deployment-new-uevv2>

**QUESTION 27**

A company has an Active Directory Domain Services (AD DS) domain with one physical domain controller. All client computers run Windows 10 Enterprise.

A client computer hosts a Windows 10 Enterprise virtual machine (VM) test environment. The VMs are connected to a private virtual switch that is configured as shown in the Virtual Switch Manager exhibit.



Virtual Switch Manager for COMPUTER1

**Virtual Switches**

- New virtual network switch
- New Virtual Switch
  - Private virtual switch

**Global Network Settings**

- MAC Address Range
  - 00-15-5D-E5-CC-00 to 00-15-5D-E...

**Virtual Switch Properties**

Name:

New Virtual Switch

Notes:

Connection type

What do you want to connect this virtual switch to?

☐ External network:

Atheros AR9285 Wireless Network Adapter

☒ Allow management operating system to share this network adapter

☐ Enable single root I/O virtualization (SR-IOV)

☐ Internal network

☒ Private network

VLAN ID

☐ Enable virtual LAN identification for management operating system

The VLAN identifier specifies the virtual LAN that the management operating system will use for all network communications through this network adapter. This setting does not affect virtual machine networking.

2

Remove

**i** SR-IOV can only be configured when the virtual switch is created. An external virtual switch with SR-IOV enabled cannot be converted to an internal or private switch.

OK Cancel Apply



You have the following requirements:

- Configure the test environment to allow VMs to communicate with the host machine.
- Minimize impact on the host machine.

You need to meet the requirements.

What should you do first?

- A. Change the VLAN ID of the private virtual switch to Enable Virtual LAN identification.
- B. Create a new virtual switch with a Private Network connection type.
- C. Create a new virtual switch with an External Network connection type.
- D. Create a new virtual switch with an Internal Network connection type.

**Correct Answer: D**

**Section: Plan Desktop and Device Deployment**

**Explanation**

**Explanation/Reference:**

Explanation:

Virtual switches/ Hyper-V VLAN - you can create 3 different types of virtual switches depending the needs of your virtual machines and one single machine can use multiple virtual NICs that is member of different Virtual Switches.

- External - This virtual switch binds to the physical network adapter and create a new adapter you can see in Control Panel\Network and Internet\Network Connections so if a virtual machine needs contact outside the host machine this one is a must.

- Internal - This virtual switch can be used to connect all virtual machines and the host machine but cannot go outside that.

Private - This virtual switch can only be used by the virtual host

### Hyper-V Networking: Three types of Virtual Networks:

Type	Parent OS	VMs on Same HV	VMs on Remote HV	LAN	Remark
External	x	x	x	x	Conn. Lost Temporarily
Internal	x	x			
Private		x			
Dedicated		x		x	

Configuring Virtual Networks Private will not allow communication with the host machine. External will allow communication with the host machine but also allow access to other machines on the host machine's network which is not a requirement.

References: <http://john.bryntze.net/jbkb-v2/certification-exam-70-687-configuring-windows-8-part-2-configure-hardware-and-applications-16/>

**QUESTION 28**

An organization has client computers that run Windows 8. You upgrade the client computers to Windows 10 Enterprise without migrating the local user profiles. You install the Windows Assessment and Deployment Kit (ADK) in the environment.

You need to migrate the user profiles from the Windows 8 installation to the Windows 10 Enterprise installation.

What should you do first on each client computer?

- A. Run the **loadstate** command.
- B. Copy the Default Profile to a folder on drive C.
- C. Run the **ImageX** command.
- D. Run Windows Easy Transfer and select the user profile to migrate.
- E. Run the **scanstate** command.

**Correct Answer:** E

**Section:** Plan Desktop and Device Deployment

**Explanation**

**Explanation/Reference:**



#### QUESTION 29

You are the system administrator for a company. All employees have devices that run Windows 10. Employees store many files on network shares.

You need to ensure that employees keep a copy of files from network shares on their devices, even when the devices are not connected to the company network.

What should you first?

- A. Run the **SettingSyncHost.exe** command.
- B. Enable File History.
- C. Create a new pool and storage space.
- D. Run the **Set-FileShare** Windows PowerShell cmdlet.
- E. Enable Offline Files.

**Correct Answer:** E

**Section:** Plan Desktop and Device Deployment

**Explanation**

**Explanation/Reference:**

References: <https://www.howtogeek.com/98793/how-to-use-offline-files-in-windows-to-cache-your-networked-files-offline/>

#### QUESTION 30

You have a Windows To Go workspace on a USB memory drive.

When you attempt to start a computer from the drive, you receive the following error message:

“Your PC/Device needs to be repaired. The application or operating system couldn't be loaded because a required file is missing or contains errors.”

You need to repair the Windows To Go workspace.

What should you do?

- A. Restart the computer in safe mode, and then perform a system restore.
- B. Restart the computer, and then select the Last Known Good Configuration.
- C. Reapply the Windows To Go image to the USB memory drive.
- D. Restart the computer by using a recovery disk, and then perform a system restore.

**Correct Answer: C**

**Section: Plan Desktop and Device Deployment**

**Explanation**

**Explanation/Reference:**

References:

<https://docs.microsoft.com/en-us/windows/deployment/planning/windows-to-go-frequently-asked-questions#a-href-idwtg-faq-recoveryadoes-windows-recoveryenvironment-work-with-windows-to-go-whats-the-guidance-for-recovering-a-windows-to-go-drive>

### QUESTION 31

A company has an Active Directory Domain Services (AD DS) domain. All client computers run Windows 10 Enterprise and are joined to the domain.

You have the following requirements:

- Ensure that files in shared network folders are available offline.
- Minimize all data access times.
- Reduce network bandwidth usage.

You need to configure Group Policy settings to meet the requirements.

What should you do first?

- A. Enable the Synchronize all offline files when logging on policy setting.
- B. Enable and configure the Configure slow-link mode policy setting.
- C. Enable the Enable file synchronization on costed networks policy setting.
- D. Enable and configure the Specify administratively assigned Offline Files policy setting.

**Correct Answer: C**

**Section: Plan Desktop and Device Deployment**  
**Explanation**

**Explanation/Reference:**

References: [https://docs.microsoft.com/en-us/previous-versions/windows/it-pro/windows-server-2012-R2-and-2012/hh968298\(v=ws.11\)](https://docs.microsoft.com/en-us/previous-versions/windows/it-pro/windows-server-2012-R2-and-2012/hh968298(v=ws.11))

**QUESTION 32**

A company has an Active Directory Domain Services (AD DS) domain with Windows 10 Enterprise client computers.

You need to configure 20 portable computers so that they sleep after 20 minutes when running on battery power. You must accomplish this goal by using the least amount of administrative effort.

Which two actions should you perform? Each correct answer presents part of the complete solution.

**NOTE:** Each correct selection is worth one point.

- A. Create a Group Policy object (GPO) that configures the Sleep Management settings.
- B. Edit the local Group Policy to configure the Power Management settings.
- C. Edit the local Group Policy to configure the Shut Down options.
- D. Link the Group Policy object (GPO) to the organizational unit containing the portable computers.
- E. Create a Group Policy object (GPO) that configures the Power Management settings.

**Correct Answer:** AD

**Section: Plan Desktop and Device Deployment**  
**Explanation**

**Explanation/Reference:**

References:

<http://sourcedaddy.com/windows-7/configuring-power-management-settings-using-group-policy.html>

**QUESTION 33**

You have a computer named Computer1 that runs Windows 10 Enterprise.

You need to identify the locations that you can select as a File History drive.

What are two possible locations? Each correct answer presents a complete solution?

- A. the operating system volume
- B. an unformatted partition
- C. a non-system volume
- D. a network share

**Correct Answer:** CD

**Section:** Plan Desktop and Device Deployment

**Explanation**

**Explanation/Reference:**

Explanation:

You can use a non-system volume as a File History drive. This can be a volume on a hard drive in a computer, a Virtual Hard Drive (VHD) or an external USB drive. You can also use a network share as a File History drive.

In the File History Control Panel item, you can click the "Select Drive" option. This will display a list of all detected drives that are suitable for use as the File History drive. Under the list of drives, there is a link "Add Network Location". You can click the link and browse to or enter the path to the network share.

Incorrect Answers:

A: You cannot use the operating system volume (usually the C: drive) as the File History drive.

B: The volume used for the File History drive must be a formatted volume.

References: <http://computerbeginnersguides.com/blog/2015/08/23/enable-file-history-backups-in-windows-10/>

#### **QUESTION 34**

You have a laptop. Recently, you discovered that the battery life on the laptop is less than expected.

You need to generate a report that lists the expected battery life after a full charge and that shows historical battery life.

What should you use?

- A. The Power & sleep setting in the Settings app
- B. the **Powercfg** command
- C. Power Options in Control Panel
- D. Performance Monitor

**Correct Answer:** B

**Section:** Plan Desktop and Device Deployment

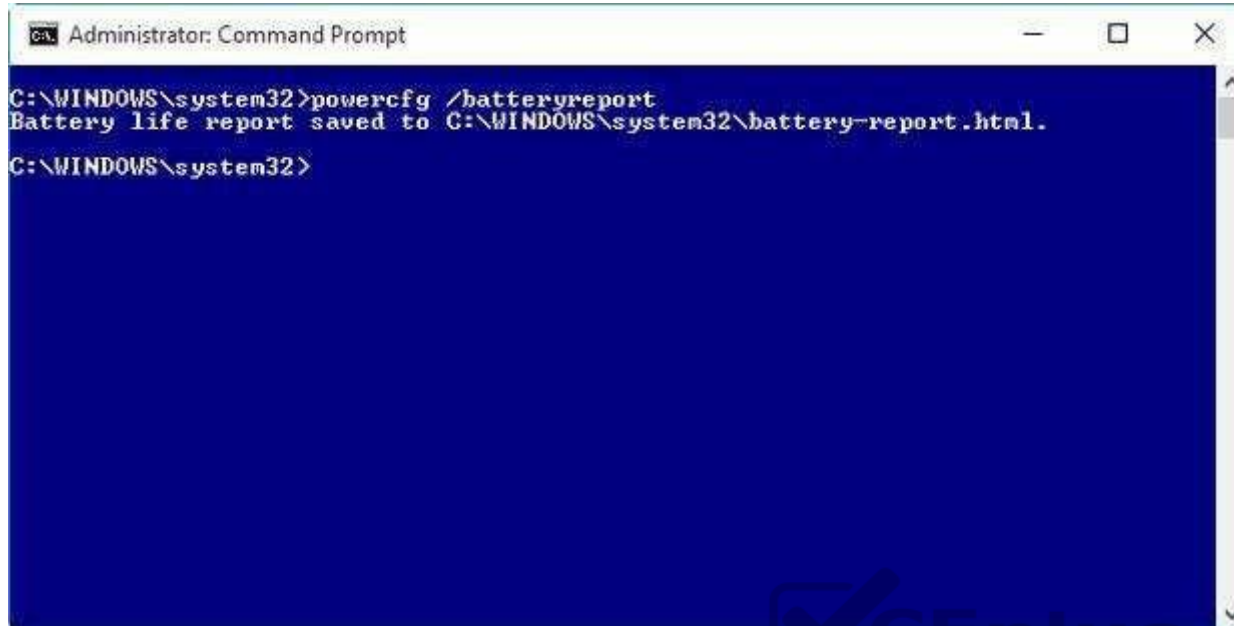
**Explanation**

**Explanation/Reference:**

Explanation:

Launching the PowerCfg command and running the Battery Report is easy once you know how.

To begin, you'll need to open an Administrator Command Prompt, which you can do by right-clicking on the Start button and selecting the Command Prompt (Admin) command. Then, type the command: `powercfg /batteryreport` and press [Enter]. The Power Configuration Utility will immediately compile the report and display the message shown in Figure A. Figure A



```
Administrator: Command Prompt
C:\WINDOWS\system32>powercfg /batteryreport
Battery life report saved to C:\WINDOWS\system32\battery-report.html.
C:\WINDOWS\system32>
```

References:

<https://www.howtogeek.com/217255/use-the-hidden-powercfg-tool-to-optimize-battery-life-on-windows/>

### QUESTION 35

You support Windows 10 Enterprise desktop computers that are members of an Active Directory domain. Standard domain user accounts are configured with mandatory user profiles.

Several users have been transferred to a different department.

You need to allow the users to modify their profiles.

What should you do?

- A. Change the extension of the NTUSER file in the user profile directory to .dat
- B. Configure Folder Redirection by using Group Policy
- C. Configure the user's document library to include folders from network shares
- D. Remove the .man extension from the user profile name

**Correct Answer: A**

**Section: Plan Desktop and Device Deployment**

**Explanation**

**Explanation/Reference:**

References: [https://msdn.microsoft.com/en-us/library/windows/desktop/bb776895\(v=vs.85\).aspx](https://msdn.microsoft.com/en-us/library/windows/desktop/bb776895(v=vs.85).aspx)

**QUESTION 36**

**Note:** This question is part of a series of questions that present the same scenario. Each question in the series contains a unique solution that might meet the stated goals. Some question sets might have more than one correct solution, while others might not have a correct solution.

**After you answer a question in this section, you will NOT be able to return to it. As a result, these questions will not appear in the review screen.**

A company has a forest trust with a partner organization. Users from both organizations log on to devices that run Windows 8.1.

You plan to replace the devices with devices running Windows 10.

You need to migrate user profiles from both forests using the least amount of administrative effort.

Solution: You migrate each profile individually by using the User State Migration Tool (USMT).

Does the solution meet the goal?

A. Yes

B. No



**Correct Answer: B**

**Section: Plan Desktop and Device Deployment**

**Explanation**

**Explanation/Reference:**

**QUESTION 37**

**Note:** This question is part of a series of questions that present the same scenario. Each question in the series contains a unique solution that might meet the stated goals. Some question sets might have more than one correct solution, while others might not have a correct solution.

**After you answer a question in this section, you will NOT be able to return to it. As a result, these questions will not appear in the review screen.**

A company has a forest trust with a partner organization. Users from both organizations log on to devices that run Windows 8.1.

You plan to replace the devices with devices running Windows 10.

You need to migrate user profiles from both forests using the least amount of administrative effort.

Solution: You enable roaming profiles on the user accounts and have them log on to the new device.

Does the solution meet the goal?

- A. Yes
- B. No

**Correct Answer:** B

**Section:** Plan Desktop and Device Deployment

**Explanation**

**Explanation/Reference:**

### QUESTION 38

**Note:** This question is part of a series of questions that present the same scenario. Each question in the series contains a unique solution that might meet the stated goals. Some question sets might have more than one correct solution, while others might not have a correct solution.

**After you answer a question in this section, you will NOT be able to return to it. As a result, these questions will not appear in the review screen.**

A company has a forest trust with a partner organization. Users from both organizations log on to devices that run Windows 8.1.

You plan to replace the devices with devices running Windows 10.

You need to migrate user profiles from both forests using the least amount of administrative effort.

Solution: You migrate both profiles simultaneously by using the User State Migration Tool (USMT).

Does the solution meet the goal?

- A. Yes
- B. No

**Correct Answer:** A

**Section:** Plan Desktop and Device Deployment

**Explanation**

**Explanation/Reference:**

References: <https://docs.microsoft.com/en-us/windows/deployment/usmt/usmt-migrate-user-accounts#bkmk-migrateall>

### QUESTION 39

**Note:** This question is part of a series of questions that present the same scenario. Each question in the series contains a unique solution that might meet the stated goals. Some question sets might have more than one correct solution, while others might not have a correct solution.

**After you answer a question in this section, you will NOT be able to return to it. As a result, these questions will not appear in the review screen.**

A company has a forest trust with a partner organization. Users from both organizations log on to devices that run Windows 8.1.

You plan to replace the devices with devices running Windows 10.



You need to migrate user profiles from both forests using the least amount of administrative effort.

Solution: You migrate each profile by copying the user directories to the new device.

Does the solution meet the goal?

- A. Yes
- B. No

**Correct Answer: B**

**Section: Plan Desktop and Device Deployment**

**Explanation**

**Explanation/Reference:**

#### **QUESTION 40**

You administer desktop computers in your company network.

You are developing User State Migration Tool (USMT) procedures.

You need to ensure that the files located in C:\projects are included in the migration package.

What should you do?

Include the following code segment in the custom.ini file:

```
patterntype = File  
objectSet = C:\projects\*.*
```

Include the following code segment in the custom.xml file:

```
<objectSet>  
  <pattern type="File">C:\projects\* [*]</pattern>  
</objectSet>
```

Include the following code segment in the custom.xml file:

```
<include>  
  <pattern type="File">C:\projects\* [*]</pattern>  
</include>
```

Include the following code segment in the custom.ini file:

```
patterntype = Folder  
objectSet = C:\projects\*
```

A.

B.

C.

D.

**Correct Answer:** C

**Section:** Plan Desktop and Device Deployment

**Explanation**

**Explanation/Reference:**

#### QUESTION 41

Your network contains an Active Directory domain named contoso.com. All client computers in the domain run Windows 10 Enterprise. All domain users have roaming user profiles.

You need to prevent a user named User2 from being able to save changes to his roaming user profile.

Which file you modify?

- A. ntuser.dat
- B. registry.pol
- C. system.dat
- D. ntuser.pol



**Correct Answer:** D

**Section:** Plan Desktop and Device Deployment

**Explanation**

**Explanation/Reference:**

Explanation:

You would need to rename ntuser.pol to ntuser.dat to create a 'mandatory' profile.

#### QUESTION 42

A company plans to deploy Windows 10 to kiosks in public areas. User profiles must be persistent and must not be modified by users.

You need to configure the devices.

How should you configure the user accounts?

- A. domain profile
- B. mandatory profile
- C. local profile
- D. Microsoft account

**Correct Answer:** B

**Section: Plan Desktop and Device Deployment**  
**Explanation**

**Explanation/Reference:**

**QUESTION 43**

You administer a Windows 10 Enterprise computer that runs Hyper-V. The computer hosts a virtual machine with multiple snapshots. The virtual machine uses one virtual CPU and 512 MB of RAM.

You discover that the virtual machine pauses automatically and displays the state as paused-critical.

You need to identify the component that is causing the error.

Which component should you identify?

- A. no virtual switch defined
- B. insufficient memory
- C. insufficient hard disk space
- D. insufficient number of virtual processors

**Correct Answer: C**

**Section: Plan Desktop and Device Deployment**  
**Explanation**

**Explanation/Reference:**

Explanation:

In this question, the VM has “multiple snapshots” which would use up a lot of disk space. Virtual machines will go into the “Paused-Critical” state in Hyper-V if the free space on the drive that contains the snapshots goes below 200MB.

One thing that often trips people up is if they have their virtual hard disks configured on one drive – but have left their snapshot files stored on the system drive.

Once a virtual machine snapshot has been taken– the base virtual hard disk stops expanding and the snapshot file stores new data that is written to the disk – so it is critical that there is enough space in the snapshot storage location.

References: [http://blogs.msdn.com/b/virtual\\_pc\\_guy/archive/2009/04/22/why-is-my-virtual-machine-paused-critical-hyper-v.aspx](http://blogs.msdn.com/b/virtual_pc_guy/archive/2009/04/22/why-is-my-virtual-machine-paused-critical-hyper-v.aspx)

**QUESTION 44**

You are the desktop administrator for a small company. The company has a workgroup environment.

Your manager asks you to set up a Windows 10 Enterprise computer and tablet for the company sales associate. The sales associate uses apps downloaded from the Windows Store. The sales associate wants the Windows experience and apps to be as consistent as possible between the computer and the tablet.

You need to configure the computer and tablet to synchronize settings.

Which account type should you use?

- A. Local
- B. Workgroup
- C. Domain
- D. Microsoft

**Correct Answer:** D

**Section:** Plan Desktop and Device Deployment

**Explanation**

**Explanation/Reference:**

References: <https://support.microsoft.com/en-za/help/4026102/windows-10-about-sync-settings>

#### **QUESTION 45**

You have a Microsoft Intune subscription.

You create two compliance policies named Comp1 and Comp2. You create a configuration policy named ConfigPol1. The settings in each policy do not conflict with other policies.

Comp1 has low security settings. Comp2 has medium security settings. ConfigPol1 has high security settings.

You have a device named Device1. Device1 is a member of groups that have Comp1, Comp2 and ConfigPol1 applied.

You need to identify which policies will be enforced on Device1.

What should you identify?

- A. ConfigPol1 only
- B. Comp1, Comp2 and ConfigPol1
- C. Comp2 and ConfigPol1 only
- D. Comp1 only
- E. Comp2 only
- F. Comp1 and Comp2 only
- G. Comp1 and ConfigPol1 only

**Correct Answer:** B

**Section:** Plan Desktop and Device Deployment

**Explanation**

**Explanation/Reference:**

**QUESTION 46**

A company has mobile devices that run Windows 10.

A device experiences battery life issues.

You need to generate an HTML report that includes any potential battery problems.

Which command should you run?

- A. **Powercfg /trace /d out.html**
- B. **Powercfg /batteryreport**
- C. **Powercfg /energy /output out.html**
- D. **Powercfg /devicequery all\_devices**

**Correct Answer: C**

**Section: Plan Desktop and Device Deployment**

**Explanation**



**Explanation/Reference:**

References: <https://www.thewindowsclub.com/get-more-battery-life-out-of-your-laptop-in-windows-7>

**QUESTION 47**

You manage desktop computers on your company network. The finance department uses computers that run Windows 7 Enterprise and a 32-bit legacy application. The application has some compatibility issues with Windows 10 Enterprise. The application uses domain single sign-on for authentication.

The vendor releases a new version of the application that is fully compatible with Windows 10 Enterprise. These vendors cannot be installed on the same computer due to **HKEY\_CURRENT\_USER** registry setting conflicts.

You need to migrate the finance department computers to Windows 10 Enterprise while meeting the following requirements:

- Users are able to use the original version of the application while validating the new version.
- Once the new version is validated, the old version is removed with minimal effort.
- Users authenticate only once to use the application.

Which technology should you choose?

- A. Microsoft Application Compatibility Toolkit (ACT)
- B. User Experience Virtualization (UE-V)
- C. User Experience Virtualization (UE-V)

D. Hyper-V

**Correct Answer:** A

**Section:** Plan Desktop and Device Deployment

**Explanation**

**Explanation/Reference:**

References: <https://docs.microsoft.com/en-us/windows/deployment/planning/act-technical-reference>

#### QUESTION 48

You administer computers that run Windows XP Professional. These computers have a wide range of line of business (LOB) applications installed.

You want to migrate from Windows XP Professional to Windows 10 Enterprise.

You need to identify which application will prompt users for elevated privileges.

What should you do first?

- A. Install the Microsoft Application Compatibility Toolkit (ACT).
- B. Install User Experience Virtualization (UE-V) on the Windows 10 Enterprise computers before you install the LOB applications.
- C. Configure the advanced audit setting on the Windows 10 Enterprise computers before you install the LOB applications.
- D. Install the Microsoft Assessment and Planning (MAP) Toolkit.

**Correct Answer:** A

**Section:** Plan Desktop and Device Deployment

**Explanation**

**Explanation/Reference:**

References: [https://docs.microsoft.com/en-us/previous-versions/windows/it-pro/windows-7/ee449434\(v=ws.10\)](https://docs.microsoft.com/en-us/previous-versions/windows/it-pro/windows-7/ee449434(v=ws.10))

#### QUESTION 49

You are a desktop support technician for your company.

You deliver new Windows 10 Enterprise laptops to the software developers. The software developers frequently use laptops to work remotely and are often disconnected from the corporate network. One of the software developers works on an application that must run on Windows XP, Windows Vista, Windows 7, and Windows 10 Enterprise. The software developer needs the ability to test the application natively on each of these operating systems.

You need to provide the software developer with a way to test the application on all operating system versions on the new laptop. The software developer must be able to perform the testing while working remotely without access to corporate resources.

What should you do?

- A. Create three virtual machines for Windows XP, Windows Vista, and Windows 7 on a company Windows Server 2012 that is running Hyper-V.

- B. Use Hyper-V to create three virtual machines that provide Windows XP, Windows Vista, and Windows 7 environments.
- C. Install the Windows PE version of Windows XP, Windows Vista, and Windows 7 on three USB drives and boot from each drive to test each operating system version.
- D. Change the compatibility mode settings of the application to Windows XP, Windows Vista, and Windows 7 before testing each operating system version.

**Correct Answer: B**

**Section: Plan Desktop and Device Deployment**

**Explanation**

**Explanation/Reference:**

References:

<https://www.sitepoint.com/hyper-v-virtual-machine-tutorial/>

#### QUESTION 50

DRAG DROP

You have a Windows 10 Enterprise computer named Computer1 that has the Hyper-V feature installed. Computer1 hosts a virtual machine named VM1. VM1 runs Windows 10 Enterprise. VM1 connects to a private virtual network switch.

From Computer1, you need to remotely execute Windows PowerShell cmdlets on VM1.



<https://vceplus.com/>

What should you do?

- A. Run the **winrm.exe** command and specify the **-s** parameter.
- B. Run the **Powershell.exe** command and specify the **-Command** parameter.
- C. Run the **Receive-PSSession** cmdlet and specify the **-Name** parameter.
- D. Run the **Invoke-Command** cmdlet and specify the **-VMName** parameter.

**Correct Answer: D**



**Section: Plan Desktop and Device Deployment**  
**Explanation**

**Explanation/Reference:**

Explanation:

We can use Windows PowerShell Direct to run PowerShell cmdlets on a virtual machine from the Hyper-V host. Because Windows PowerShell Direct runs between the host and virtual machine, there is no need for a network connection or to enable remote management.

There are no network or firewall requirements or special configuration. It works regardless of your remote management configuration. To use it, you must run Windows 10 or Windows Server Technical Preview on the host and the virtual machine guest operating system.

To create a PowerShell Direct session, use one of the following commands:

- Enter-PSSession -VMName VMName
- Invoke-Command -VMName VMName -ScriptBlock {commands}

References: [https://msdn.microsoft.com/en-us/virtualization/hyperv\\_on\\_windows/about/whats\\_new](https://msdn.microsoft.com/en-us/virtualization/hyperv_on_windows/about/whats_new)

**QUESTION 51**

You deploy several tablet PCs that run Windows 10 Enterprise.

You need to minimize power usage when the user presses the sleep button.

What should you do?

- A. In Power Options, configure the sleep button setting to Sleep.
- B. In Power Options, configure the sleep button setting to Hibernate.
- C. Configure the active power plan to set the system cooling policy to passive.
- D. Disable the C-State control in the computer's BIOS.

**Correct Answer: B**

**Section: Plan Desktop and Device Deployment**  
**Explanation**

**Explanation/Reference:**

Explanation:

We can minimize power usage on the tablet PCs by configuring them to use Hibernation mode. A computer in hibernation mode uses no power at all. Hibernation is a power-saving state designed primarily for laptops. While sleep puts your work and settings in memory and draws a small amount of power, hibernation puts your open documents and programs on your hard disk, and then turns off your computer. Of all the power-saving states in Windows, hibernation uses the least amount of power. On a laptop, use hibernation when you know that you won't use your laptop for an extended period and won't have an opportunity to charge the battery during that time.

References: <http://windows.microsoft.com/en-gb/windows7/sleep-and-hibernation-frequently-asked-questions>

**QUESTION 52**

You support Windows 10 Enterprise computers. Your company protects all laptops by using the BitLocker Network Unlock feature.

Some employees work from home.

You need to ensure that employees can log on to their laptops when they work from home.

What should you do?

- A. Have users run the **Manage-bde.exe –unlock** command before they disconnect from the company network.
- B. Ensure that the Trusted Platform Module (TPM) chips in the laptops are version 1.2 or greater.
- C. Enable BitLocker to Go.
- D. Provide employees with their BitLocker PINs.

**Correct Answer: D**

**Section: Plan and Implement a Microsoft 365 Solution**

**Explanation**

**Explanation/Reference:**

**QUESTION 53**

A company has Windows 10 Enterprise client computers. The company uses Windows BitLocker Drive Encryption with the data-only option on all client computers.

You delete a file containing highly confidential information from your computer.

You need to clear the free space on the hard drive to minimize the chance of the confidential information being recovered.

Which command should you run on the client computer?

- A. **diskpart clean**
- B. **manage-bde -w**
- C. **chkdsk /spotfix**
- D. **BdeHdCfg -target c: shrink**

**Correct Answer: B**

**Section: Plan and Implement a Microsoft 365 Solution**

**Explanation**

**Explanation/Reference:**

References: <https://technet.microsoft.com/en-us/library/jj647761.aspx>

#### QUESTION 54

**Note:** This question is part of a series of questions that present the same scenario. Each question in the series contains a unique solution that might meet the stated goals. Some question sets might have more than one correct solution, while others might not have a correct solution.

**After you answer a question in this section, you will NOT be able to return to it. As a result, these questions will not appear in the review screen.**

Your company uses Microsoft Office 365.

You need to ensure that users are prompted to label and classify documents while they edit documents.

Solution: You create a Microsoft Intune mobile device management (MDM) policy for mobile devices.

Does the solution meet the goal?

- A. Yes
- B. No

**Correct Answer:** B

**Section:** Plan and Implement a Microsoft 365 Solution

**Explanation**

**Explanation/Reference:**

References:

<https://docs.microsoft.com/en-us/information-protection/deploy-use/configure-policy>

#### QUESTION 55

**Note:** This question is part of a series of questions that present the same scenario. Each question in the series contains a unique solution that might meet the stated goals. Some question sets might have more than one correct solution, while others might not have a correct solution.

**After you answer a question in this section, you will NOT be able to return to it. As a result, these questions will not appear in the review screen.**

Your company uses Microsoft Office 365.

You need to ensure that users are prompted to label and classify documents while they edit documents.

Solution: You import the data from on-premises to Office 365.

Does the solution meet the goal?

- A. Yes
- B. No

**Correct Answer:** B

**Section: Plan and Implement a Microsoft 365 Solution**  
**Explanation**

**Explanation/Reference:**

References: <https://docs.microsoft.com/en-us/information-protection/deploy-use/configure-policy>

**QUESTION 56**

You have a Microsoft Intune subscription.

You need to uninstall the Intune agent from a computer.

What should you do?

- A. From the Groups node in the Microsoft Intune administration portal, click **Retire/Wipe**.
- B. From the computer, use Programs and Features in Control Panel.
- C. From the Groups node in the Microsoft Intune administration portal, click **Remote Lock** on the Remote Tasks menu.
- D. From the computer, run the **cltui.exe** command.

**Correct Answer: A**

**Section: Plan and Implement a Microsoft 365 Solution**  
**Explanation**

**Explanation/Reference:**

References: <https://www.petervanderwoude.nl/post/uninstall-the-microsoft-intune-client/>

**QUESTION 57**

**HOTSPOT**

You are an administrator of your company's Microsoft Intune subscription.

You need to configure Intune policies to meet the following requirements:

- Jailbroken devices must be reported.
  - Noncompliant devices must not be allowed to connect to Microsoft Exchange.
  - Android devices must have passwords of 8 characters. ▪
- iOS devices must have passwords of 8 characters.

What type of policies should you implement? To answer, select the appropriate policy for each requirement in the dialog box in the answer area.

**NOTE:** Each correct selection is worth one point.

**Hot Area:**

[www.vceplus.com](http://www.vceplus.com) - VCE Exam Simulator - Download A+ VCE (latest) free Open VCE Exams - VCE to PDF Converter - PDF Online

## Answer Area

### Requirement

### Intune policy

Jailbroken devices

	▼
Compliance	
Conditional Access	
Custom Configuration	
General Configuration	

Noncompliant devices

	▼
Compliance	
Conditional Access	
Custom Configuration	
General Configuration	

Android devices

	▼
Compliance	
Conditional Access	
Custom Configuration	
General Configuration	

iOS devices

	▼
Compliance	
Conditional Access	
Custom Configuration	
General Configuration	

Correct Answer:

## Answer Area

### Requirement

### Intune policy

Jailbroken devices

	▼
Compliance	
Conditional Access	
Custom Configuration	
General Configuration	

Noncompliant devices

	▼
Compliance	
Conditional Access	
Custom Configuration	
General Configuration	

Android devices

	▼
Compliance	
Conditional Access	
Custom Configuration	
General Configuration	

iOS devices

	▼
Compliance	
Conditional Access	
Custom Configuration	
General Configuration	

**Explanation/Reference:**

References:

<https://docs.microsoft.com/en-us/intune/device-compliance-get-started>

<https://docs.microsoft.com/en-us/intune/conditional-access-intune-common-ways-use> <https://docs.microsoft.com/en-us/intune/device-restrictions-android> <https://docs.microsoft.com/en-us/intune/device-restrictions-ios>

**QUESTION 58**

An organization has Microsoft System Center Configuration Manager (SCCM) version 1610.

The organization purchases a Microsoft Intune subscription and must configure the mobile device management (MDM) authority for that subscription to use SCCM. You need to deploy the required role in SCCM to support the Intune service.

Which role must you deploy in SCCM?

- A. enrollment proxy point
- B. service connection point
- C. enrollment point
- D. management point

**Correct Answer: B**

**Section: Plan and Implement a Microsoft 365 Solution**

**Explanation**

**Explanation/Reference:**

References: <https://docs.microsoft.com/en-us/sccm/core/servers/deploy/configure/about-the-service-connection-point>

**QUESTION 59**

**Note: This question is part of a series of questions that present the same scenario. Each question in the series contains a unique solution that might meet the stated goals. Some question sets might have more than one correct solution, while others might not have a correct solution.**

**After you answer a question in this section, you will NOT be able to return to it. As a result, these questions will not appear in the review screen.**

Your company uses Microsoft Office 365.

You need to ensure that users are prompted to label and classify documents while they edit documents.

Solution: You enable Microsoft Azure Information Protection.

Does the solution meet the goal?

- A. Yes
- B. No

**Correct Answer:** A

**Section:** Plan and Implement a Microsoft 365 Solution

**Explanation**

**Explanation/Reference:**

References: <https://docs.microsoft.com/en-us/information-protection/deploy-use/configure-policy>

#### **QUESTION 60**

Your network contains an Active Directory domain named contoso.com. Contoso.com is synchronized to a Microsoft Azure Active Directory. You have a Microsoft Intune subscription.

Your company plans to implement a Bring Your Own Device (BYOD) policy. You will provide users with access to corporate data from their personal iOS devices.

You need to ensure that you can manage the personal iOS devices.

What should you do first?

- A. Install the Company Portal app from the Apple App Store.
- B. Create a device enrollment manager account.
- C. Set a DNS alias for the enrollment server address.
- D. Configure the Intune Service to Service Connector for Hosted Exchange.
- E. Enroll for an Apple Push Notification (APN) certificate.



**Correct Answer:** E

**Section:** Plan and Implement a Microsoft 365 Solution

**Explanation**

**Explanation/Reference:**

Explanation:

An Apple Push Notification service (APNs) certificate must first be imported from Apple so that you can manage iOS devices. The certificate allows Intune to manage iOS devices and institutes an accredited and encrypted IP connection with the mobile device management authority services.

References:

<https://technet.microsoft.com/library/dn408185.aspx> <https://technet.microsoft.com/en-us/library/dn764961.aspx> <https://technet.microsoft.com/en-us/library/mt346003.aspx> <https://technet.microsoft.com/en-us/library/dn646988.aspx>

#### **QUESTION 61**

You manage Microsoft Intune for a company named Contoso. Intune client computers run Windows 10 Enterprise.

You notice that there are 25 mandatory updates listed in the Intune administration console.



You need to prevent users from receiving prompts to restart Windows following the installation of mandatory updates.

Which policy template should you use?

- A. Microsoft Intune Agent Settings
- B. Windows Configuration Policy
- C. Microsoft Intune Center Settings
- D. Windows Custom Policy (Windows 10 and Windows 10 Mobile)

**Correct Answer:** A

**Section:** Plan and Implement a Microsoft 365 Solution

**Explanation**

**Explanation/Reference:**

Explanation:

To configure the Prompt user to restart Windows during Intune client agent mandatory updates update policy setting you have to configure the Microsoft Intune Agent Settings policy. Setting the Prompt user to restart Windows during Intune client agent mandatory updates setting to No would prevent users from receiving prompts to restart Windows following the installation of mandatory updates.

References: <http://blogs.technet.com/b/windowsintune/archive/2013/01/09/policy-settings-for-mandatory-updates.aspx> <https://technet.microsoft.com/en-us/library/dn646989.aspx>

## **QUESTION 62**

**DRAG DROP**

You manage Microsoft Intune for a company named Contoso. You have 200 computers that run Windows 10. The computers are Intune clients.

You need to configure software updates for the clients.

Which policy template should you use to configure each software updates setting? To answer, drag the appropriate policy templates to the correct settings. Each policy template may be used once, more than once, or not at all. You may need to drag the split bar between panes or scroll to view content.

**Select and Place:**

### Policy Templates

Microsoft Intune Agent Settings

Windows Configuration Policy

Windows Custom Policy (Windows 10 and Windows 10 Mobile)

### Answer Area

Require automatic updates:

Policy template

Minimum classification of updates to install automatically:

Policy template

Allow immediate installation of updates that do not interrupt Windows:

Policy template

Correct Answer:

### Policy Templates

Microsoft Intune Agent Settings

Windows Configuration Policy

Windows Custom Policy (Windows 10 and Windows 10 Mobile)

### Answer Area

Require automatic updates:

Windows Configuration Policy

Minimum classification of updates to install automatically:

Windows Configuration Policy

Allow immediate installation of updates that do not interrupt Windows:

Microsoft Intune Agent Settings

### Section: Plan and Implement a Microsoft 365 Solution

#### Explanation

#### Explanation/Reference:

Explanation:

You must make use of the Microsoft Intune Windows general configuration policy to configure settings for enrolled devices. The system settings that can be configured using this policy include the following:

- Require automatic updates

- Require automatic updates – Minimum classification of updates to install automatically.
- User Account Control.
- Allow diagnostic data submission.

To configure the Allow immediate installation of updates that do not interrupt Windows update policy setting you have to configure and deploy a Microsoft Intune Agent Settings policy.

References:

<https://technet.microsoft.com/en-us/library/dn646968.aspx> <https://technet.microsoft.com/en-us/library/mt147409.aspx>

### QUESTION 63

You have an Active Directory domain named contoso.com that contains a deployment of Microsoft System Center 2012 Configuration Manager Service Pack 1 (SP1). You have a Microsoft Intune subscription that is synchronized to contoso.com by using the Microsoft Azure Active Directory Synchronization Tool (DirSync.)

You need to ensure that you can use Configuration Manager to manage the devices that are registered to your Microsoft Intune subscription.

Which two actions should you perform? Each correct answer presents a part of the solution.

- A. In Microsoft Intune, create a new device enrollment manager account.
- B. Install and configure Azure Active Directory Synchronization Services (AAD Sync.)
- C. In Microsoft Intune, configure an Exchange Connector.
- D. In Configuration Manager, configure the Microsoft Intune Connector role.
- E. In Configuration Manager, create the Microsoft Intune subscription.

**Correct Answer:** DE

**Section:** Plan and Implement a Microsoft 365 Solution

**Explanation**

**Explanation/Reference:**

Explanation:

To allow Configuration Manager to manage mobile devices in the same context as other devices, it requires you to create a Windows Intune subscription and synchronize user accounts from Active Directory to Microsoft Online. To achieve that, you are required to complete the following tasks:

- Sign up for a Windows Intune organizational account
- Add a public company domain and CNAME DNS entry
- Verify users have public domain User Principal Names (UPNs)
- If you plan to use single sign-on, deploy and configure Active Directory Federated Services (ADFS)
- Deploy and Configure Active Directory Synchronization
- Reset users Microsoft Online password – If not using ADFS\*
- Configure Configuration Manager for mobile device management
- Create the Windows Intune Subscription in the Configuration Manager console

- Add the Windows Intune Connector Site System role
- Verify that Configuration Manager successfully connects to Windows Intune

References: <http://blogs.technet.com/b/configmgrteam/archive/2013/03/20/configuring-configuration-manager-sp1-to-manage-mobile-devices-using-windows-intune.aspx> <https://www.systemcenterdudes.com/configuring-sccm-2012-intune-integration/>

#### QUESTION 64

You have a Microsoft Intune subscription.

You have three security groups named Security1, Security2 and Security3. Security1 is the parent group of Security2. Security2 has 100 users.

You need to change the parent group of Security2 to be Security3.

What should you do first?

- A. Edit the properties of Security1.
- B. Edit the properties of Security2.
- C. Delete security2.
- D. Remove all users from Security2.

**Correct Answer: C**

**Section: Plan and Implement a Microsoft 365 Solution**

**Explanation**

#### Explanation/Reference:

Explanation:

You cannot change the parent group of a security group in Microsoft Intune. You can only delete the group and recreate another group with the correct parent. Deleting a group does not delete the users that belong to that group. Therefore, you do not need to remove the users from the group; you can just delete the group and recreate it.

References:

<https://technet.microsoft.com/en-gb/library/dn646990.aspx>

#### QUESTION 65

You plan to deploy a Microsoft Azure RemoteApp collection by using a custom template image. The image will contain Microsoft Office 365 ProPlus apps.

You need to ensure that multiple users can run Office 365 ProPlus from the custom template image simultaneously.

What should you include in the configuration file?

- A. `<Property Name = "FORCEAPPSHUTDOWN" Value = "FALSE" />`
- B. `<Product ID = "0365ProPlusRetail" />`
- C. `<Property Name = "SharedComputerLicensing" Value = "1" />`

D. <Property Name = "AUTOACTIVATE" Value = "1" />

**Correct Answer:** C

**Section:** Plan and Implement a Microsoft 365 Solution

**Explanation**

**Explanation/Reference:**

Explanation:

To make Microsoft Office 365 ProPlus apps available as RemoteApps, you need to enable Shared computer activation. You do this by including the following text in the configuration file:

<Property Name = "SharedComputerLicensing" Value= "1" />

Shared computer activation lets you to deploy Office 365 ProPlus to a computer in your organization that is accessed by multiple users. For example, several nurses at a hospital connect to the same remote server to use their applications or a group of workers share a computer at a factory.

The most common shared computer activation scenario is to deploy Office 365 ProPlus to shared computers by using Remote Desktop Services (RDS). By using RDS, multiple users can connect to the same remote computer at the same time. The users can each run Office 365 ProPlus programs, such as Word or Excel, at the same time on the remote computer.

References: <https://technet.microsoft.com/en-us/library/dn782858.aspx>



#### **QUESTION 66**

You have a Microsoft Intune subscription.

You need to uninstall the Intune agent from a computer.

What should you do?

- A. From the Groups node in the Microsoft Intune administration portal, click **Delete**.
- B. From the computer, run the **provisioningutil.exe** command.
- C. From the computer, run the **cltui.exe** command.
- D. From the computer, use Programs and Features in Control Panel.

**Correct Answer:** B

**Section:** Plan and Implement a Microsoft 365 Solution

**Explanation**

**Explanation/Reference:**

Explanation:

There are two methods to uninstall the Microsoft Intune client.

- By using the Microsoft Intune administration console and selecting Retire/Wipe. ▪

By using the ProvisioningUtil.exe on the client machine.

Incorrect Answers:

A: You would need to select Retire/Wipe in the Microsoft Intune administration portal, not Delete.

References: <https://www.petervanderwoude.nl/post/uninstall-the-microsoft-intune-client/>

#### QUESTION 67

You are a Windows 10 Enterprise user. Your organization has purchased an Office 365 subscription. You install Microsoft Skype for Business and Microsoft Outlook on your computer.

You need to connect Office 365 to Skype for Business and Outlook.

What should you do?

- A. Run the People application. Add a new account by using your Office 365 credentials.
- B. Run the Office Professional Plus setup from the Office 365 portal.
- C. Run the Windows Mail application. Add a new account by using your Office 365 credentials.
- D. Run the Office 365 desktop setup from the Office 365 portal.

**Correct Answer:** D

**Section:** Plan and Implement a Microsoft 365 Solution

**Explanation**



**Explanation/Reference:**

References:

<https://www.agileit.com/news/manual-office-365-setup-workstations/>

#### QUESTION 68

You are the system administrator for a company. You are deploying a new Microsoft Office 365 environment. You have an existing on-premises Microsoft environment.

You must deploy Microsoft Intune in a hybrid environment.

You need to configure the service connection point role.

Which tool should you use?

- A. Microsoft System Center Configuration Manager (SCCM) console
- B. Microsoft Office 365 Admin Center portal
- C. Microsoft Office AD Admin Center portal
- D. Microsoft System Center Operations Manager (SCOM) console

**Correct Answer:** A

**Section: Plan and Implement a Microsoft 365 Solution****Explanation**

**Explanation/Reference:** References: <https://docs.microsoft.com/en-us/sccm/mdm/deploy-use/create-service-connection-point>

**QUESTION 69**

Your network contains an Active Directory domain named contoso.com. All users have email addresses in the @adatum.com domain.

You need to ensure that users can register Windows 10 mobile devices for mobile device management (MDM).

Which DNS record should you create?

- A. Enterpriseregistration.adatum.com
- B. Deviceregistration.adatum.com
- C. Deviceregistration.contoso.com
- D. Enterpriseregistration.contoso.com

**Correct Answer: D**

**Section: Plan and Implement a Microsoft 365 Solution****Explanation**

**Explanation/Reference:**

References: <https://technet.microsoft.com/en-us/windows/dn771709.aspx>

**QUESTION 70**

You have a computer that runs Windows 10.

You need to block all outbound and inbound communications that occur over TCP 9997, TCP 9999, and TCP 4000.

What is the minimum number of rules that you must create?

- A. 1
- B. 2
- C. 3
- D. 6

**Correct Answer: D**

**Section: Configure Networking****Explanation**

**Explanation/Reference:**

[www.vceplus.com](http://www.vceplus.com) - VCE Exam Simulator - Download A+ VCE (latest) free Open VCE Exams - VCE to PDF Converter - PDF Online

References: [https://technet.microsoft.com/en-us/library/dd421709\(v=ws.10\).aspx](https://technet.microsoft.com/en-us/library/dd421709(v=ws.10).aspx)

#### QUESTION 71

You have a laptop that has connections for three WiFi network named WiFi1, WiFi2, and WiFi 3.

You need to ensure that the laptop connects to WiFi1 when multiple WiFi1 networks are available.

What should you do?

- A. From Netsh, configure the **WLAN** context.
- B. From Network Connections in Control Panel, modify the bindings for the WiFi.
- C. From the Windows Settings app, configure the **Wi-Fi Sense** settings.
- D. From Network Connections in Control Panel, modify the network provider order.

**Correct Answer:** D

**Section:** Configure Networking

**Explanation**

**Explanation/Reference:**

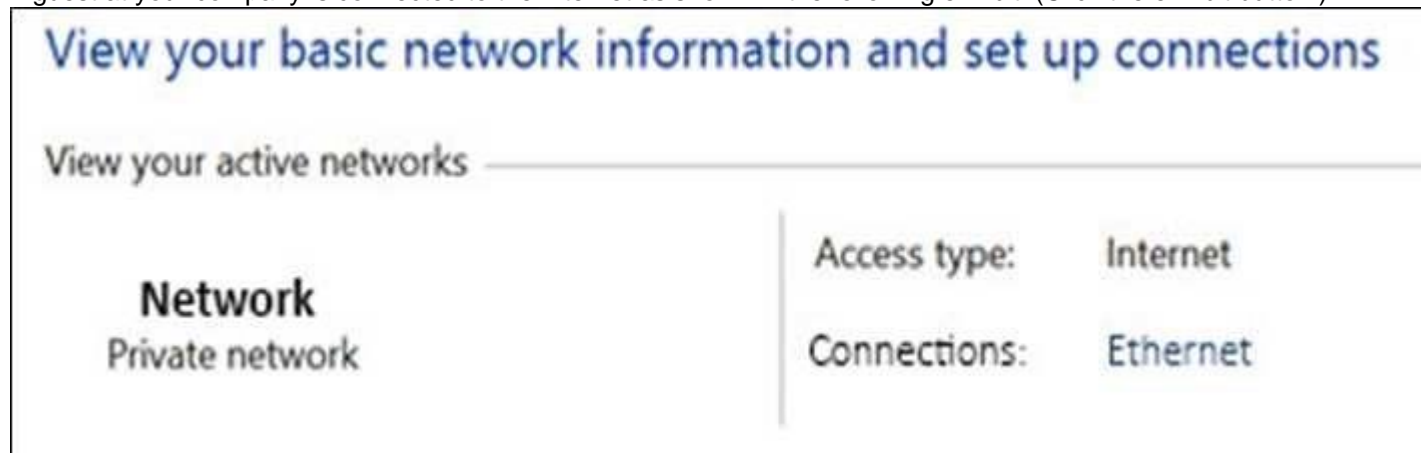
References:

<http://www.quepublishing.com/articles/article.aspx?p=2455390&seqNum=3>

#### QUESTION 72

You administer Windows 10 Enterprise client computers in your company network.

A guest at your company is connected to the Internet as shown in the following exhibit. (Click the exhibit button.)



You need to ensure that the guest user is able to share network resources over Wi-Fi without lowering the overall security of the computer.  
[www.vceplus.com](http://www.vceplus.com) - VCE Exam Simulator - Download A+ VCE (latest) free Open VCE Exams - VCE to PDF Converter - PDF Online



What should you do?

- A. Configure **File and printer** sharing settings for Public networks.
- B. Change the network location type to **Private**.
- C. Change the network location type to **Work**.
- D. Configure **File sharing** connections settings for All networks.

**Correct Answer:** D

**Section:** Configure Networking

**Explanation**

**Explanation/Reference:**

References: [http://www.isunshare.com/windows-10/turn-off-or-on-password-protected-sharing-in-windows-10.html#\\_blank](http://www.isunshare.com/windows-10/turn-off-or-on-password-protected-sharing-in-windows-10.html#_blank)

#### QUESTION 73

**Note:** This question is part of a series of questions that use the same or similar answer choices. An answer choice may be correct for more than one question in the series. Each question is independent of the other questions in this series. Information and details in a question apply only to that question.

You need to change the password used for an L2TP VPN connection.

Which Control Panel application should you use?

- A. Work Folders
- B. Phone and Modem
- C. Credential Manager
- D. Sync Center
- E. System
- F. Network and Sharing Center
- G. RemoteApp and Desktop Connections
- H. Power Options

**Correct Answer:** F

**Section:** Configure Networking

**Explanation**

**Explanation/Reference:** References: [https://www.watchguard.com/help/docs/wsm/xtm\\_11/en-us/content/en-us/mvpn/l2tp/l2tp\\_vpn\\_client\\_win7\\_c.html](https://www.watchguard.com/help/docs/wsm/xtm_11/en-us/content/en-us/mvpn/l2tp/l2tp_vpn_client_win7_c.html)

#### QUESTION 74

You have a computer that runs Windows 10. The computer is a member of an Active Directory domain.

You need to enable Network Discovery on the computer.

Which option should you select from the Network and Sharing Center?

- A. Change adapter settings
- B. Change advanced sharing settings
- C. Internet Options
- D. Set up a new connection or network

**Correct Answer: B**

**Section: Configure Networking**

**Explanation**

**Explanation/Reference:**

#### QUESTION 75

You administer a corporate network. Employees use docking stations for Windows 10 devices when the employees are working in their offices.

The wireless adapters of the devices are connected to a specific network. The docking stations are connected to a separate network that uses twisted pair cabling.

You need to ensure that the devices can access all resources from each network using either network adapter.

What should you do?

- A. Configure a network bridge.
- B. Configure Internet Connection Sharing (ICS).
- C. Configure VPN Reconnect.
- D. Turn on Network Discovery.

**Correct Answer: C**

**Section: Configure Networking**

**Explanation**

**Explanation/Reference:**

References: [https://docs.microsoft.com/en-us/previous-versions/windows/it-pro/windows-server-2008-R2-and-2008/dd637803\(v=ws.10\)](https://docs.microsoft.com/en-us/previous-versions/windows/it-pro/windows-server-2008-R2-and-2008/dd637803(v=ws.10))

#### QUESTION 76

You connect a portable Windows 10 Enterprise computer to a corporate network by using a VPN connection.

You are unable to access websites on the Internet only when you are using the VPN connection.

You need to ensure that you can access websites when connected to the corporate network.

What should you do?

- A. In the TCP/IPv4 properties of the VPN connection, disable the **Use default gateway on remote network** setting.
- B. Configure the VPN connection to use only PPTP.
- C. In the TCP/IPv4 properties of the VPN connection, enable the **Use default gateway on remote network** setting.
- D. Configure the VPN connection to use only L2TP/IPSec.
- E. In the TCP/IPv4 properties of the local area connection, disable the **Automatic metric** setting.

**Correct Answer:** A

**Section:** Configure Networking

**Explanation**

**Explanation/Reference:** References: <https://support.microsoft.com/en-za/help/317025/you-cannot-connect-to-the-internet-after-you-connect-to-a-vpn-server>

#### QUESTION 77

A company has Windows 10 Enterprise client computers. The corporate network is configured for IPv4 and IPv6.

You need to disable Media Sensing for IPv6 on the client computers without affecting IPv4 communications.

What should you do on each client computer?



<https://vceplus.com/>

- A. Run the **Set-NetIPv4Protocol** Windows PowerShell cmdlet.
- B. Run the **Disable-NetAdapterBinding** Windows PowerShell cmdlet.
- C. Run the **Set-NetIPv6Protocol** Windows PowerShell cmdlet.
- D. Run the **Disable-NetAdapter** Windows PowerShell cmdlet.

**Correct Answer:** C

**Section:** Configure Networking

**Explanation**

**Explanation/Reference:**

References: <https://docs.microsoft.com/en-us/powershell/module/nettcpip/set-netipv6protocol?view=win10-ps>

#### QUESTION 78

You administer Windows 10 Enterprise client computers in your company network. The company has an Active Directory Domain Services (AD DS) domain named contoso.com. The domain contains a DHCP server that is configured to lease IPv4 and IPv6 addresses.

A client computer named Computer1 is configured to obtain IPv4 and IPv6 addresses automatically.

A user reports that an IPv6-enabled application named App1 is not working on Computer1.

You discover that Computer1 has an IPv6 address prefix of **FE80::**. You are able to ping Computer1 successfully by using IPv4, but when you use IPv6, your ping requests time out.

You need to ensure that Computer1 will support App1.

Which command should you use?

- A. **ipconfig /renew6**
- B. **ipconfig /setclassid6**
- C. **ipconfig /renew**
- D. **ipconfig /release6**

**Correct Answer:** C

**Section:** Configure Networking

**Explanation**

**Explanation/Reference:**

References: <https://technet.microsoft.com/en-us/library/cc938688.aspx>

#### QUESTION 79

A company has an Active Directory Domain Services domain. All client computers run Windows 10 Enterprise and are joined to the domain.

You run the **ipconfig** command on a client computer. The following output depicts the results.

Ethernet adapter Local Area Connection 3:

Connection-specific DNS Suffix....:  
IPv4 Address.....:192.168.1.102  
Subnet Mask .....:255.255.255.0  
Default Gateway .....:

Tunnel adapter isatap.{DFCE21ED-2EE5-46BA-93BE-97743DE6FC94}:

Media State:.....: Media disconnected  
Connection-specific DNS Suffix....:

You need to ensure that you can establish a DirectAccess connection from the client computer to the network.

What should you do?

- A. Configure a static IPv4 address.
- B. Remove the computer from the domain.
- C. Enable IPV6 on the network adapter.
- D. Create a new VPN connection.

**Correct Answer: C**

**Section: Configure Networking**

**Explanation**

**Explanation/Reference:**

References: <https://docs.microsoft.com/en-us/windows-server/remote/remote-access/directaccess/single-server-wizard/da-basic-configure-s1-infrastructure>

### QUESTION 80

You administer Windows 10 Enterprise laptops. The laptops are configured to connect to an unsecured wireless access point. You plan to configure the wireless access point to encrypt wireless traffic and turn off SSID broadcast.

You need to ensure the laptops will join the secured wireless network automatically after the configuration changes.

What should you do?

- A. Create a network profile

- B. Create an ad hoc network.
- C. Set Network Discovery to Enabled for the Public profile.
- D. Set the Unidentified Networks Properties User permissions to User can change location.

**Correct Answer:** A

**Section:** Configure Networking

**Explanation**

**Explanation/Reference:**

References: <http://ecross.mvps.org/howto/connect-to-wireless-network-with-windows-10.htm>

### QUESTION 81

You have a new computer that runs Windows 10.

The computer is a member of a workgroup and is connected to a Wi-Fi network.

You discover that the active network is a public network.

You need to change the network location to a private network.

Which Control Panel application should you use?

- A. Network and Sharing Center
- B. System
- C. Windows Firewall
- D. HomeGroup

**Correct Answer:** A

**Section:** Configure Networking

**Explanation**

**Explanation/Reference:**

References: <https://tinkertry.com/how-to-change-windows-10-network-type-from-public-to-private>

### QUESTION 82

A company has client computer that run Win 10 enterprise.

The corporate network is configured for IPv4 and IPv6.

You need to disable IPv6 on the client computer without affecting IPv4 communications.

What should you do on each computer?

- A. Run the **Set-NetIPv4Protocol** Windows PowerShell cmdlet
- B. Run the **Set-NetIPv6Protocol** Windows PowerShell cmdlet
- C. Run **Disable-NetAdapter** Windows PowerShell cmdlet
- D. Run the **Disable-NetAdapterBinding** Windows PowerShell cmdlet

**Correct Answer:** D

**Section:** Configure Networking

**Explanation**

**Explanation/Reference:**

References:

<http://juventusitprofessional.blogspot.co.za/2013/11/powershell-windows-2012-disable-ipv6.html> <https://docs.microsoft.com/en-us/powershell/module/nettcpip/set-netipv6protocol?view=win10-ps>

### QUESTION 83

You are setting up a test environment and configuring a Windows 10 Enterprise computer. The test environment uses trunk ports.

The network department wants to use tagging to differentiate the networks.

You need to modify the settings of the computer so that it uses network 81.

Which network setting should you configure?

- A. Flow Control
- B. VLAN ID
- C. Receive Side Scaling
- D. Network Address

**Correct Answer:** B

**Section:** Configure Networking

**Explanation**

**Explanation/Reference:**

References: [https://www.startech.com/faq/networking\\_VLAN\\_tagging](https://www.startech.com/faq/networking_VLAN_tagging)

### QUESTION 84

A company is setting up a new branch office. You deploy 10 new Windows 10 Enterprise 64-bit client computers in the branch office.

The computers cannot connect to the Internet. You run the **ipconfig** command on one computer. The following output depicts a portion of the results.

```
IPv4 Address. ....: 169.254.2.45<Preferred>  
Subnet Mask. ....: 255.255.0.0  
Default Gateway ...:
```

You need to ensure that the computers can connect to the Internet.

What should you do?

- A. Deploy a Windows Internet Name Service (WINS) server. Configure all computers to use WINS
- B. Deploy a Domain Name System (DNS) server. Configure all computers to use DNS
- C. Deploy an Internet Information Services (IIS) server. Configure all computers to use IIS
- D. Deploy a Dynamic Host Configuration Protocol (DHCP) server. Configure all computers to use DHCP

**Correct Answer: D**

**Section: Configure Networking**

**Explanation**

**Explanation/Reference:**

References: <https://docs.microsoft.com/en-us/windows-server/networking/technologies/dhcp/dhcp-deploy-wps>

#### QUESTION 85

A company has 100 Windows 10 Enterprise client computers.

You need to assign static IPv6 addresses to the client computers.

Which Windows PowerShell cmdlet should you run?

- A. **Set-NetIPAddress**
- B. **Set-NetIPInterface**
- C. **Set-NetTCPSetting**
- D. **Set-NetIPv6Protocol**

**Correct Answer: A**

**Section: Configure Networking**

**Explanation**


**Explanation/Reference:**

#### QUESTION 86

HOTSPOT

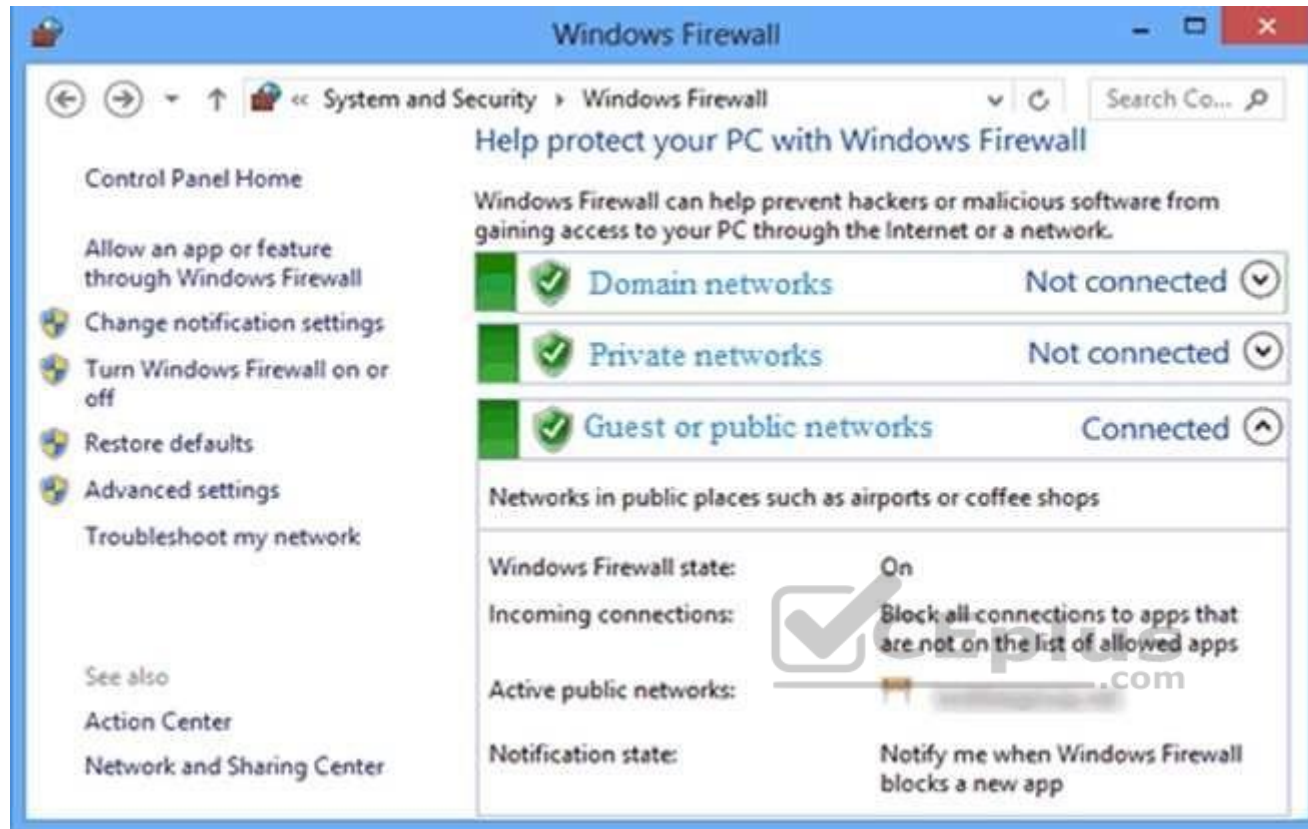


You have a DHCP server. The server has a scope that is configured as shown in the DHCP Scope exhibit. (Click the Exhibit button.)

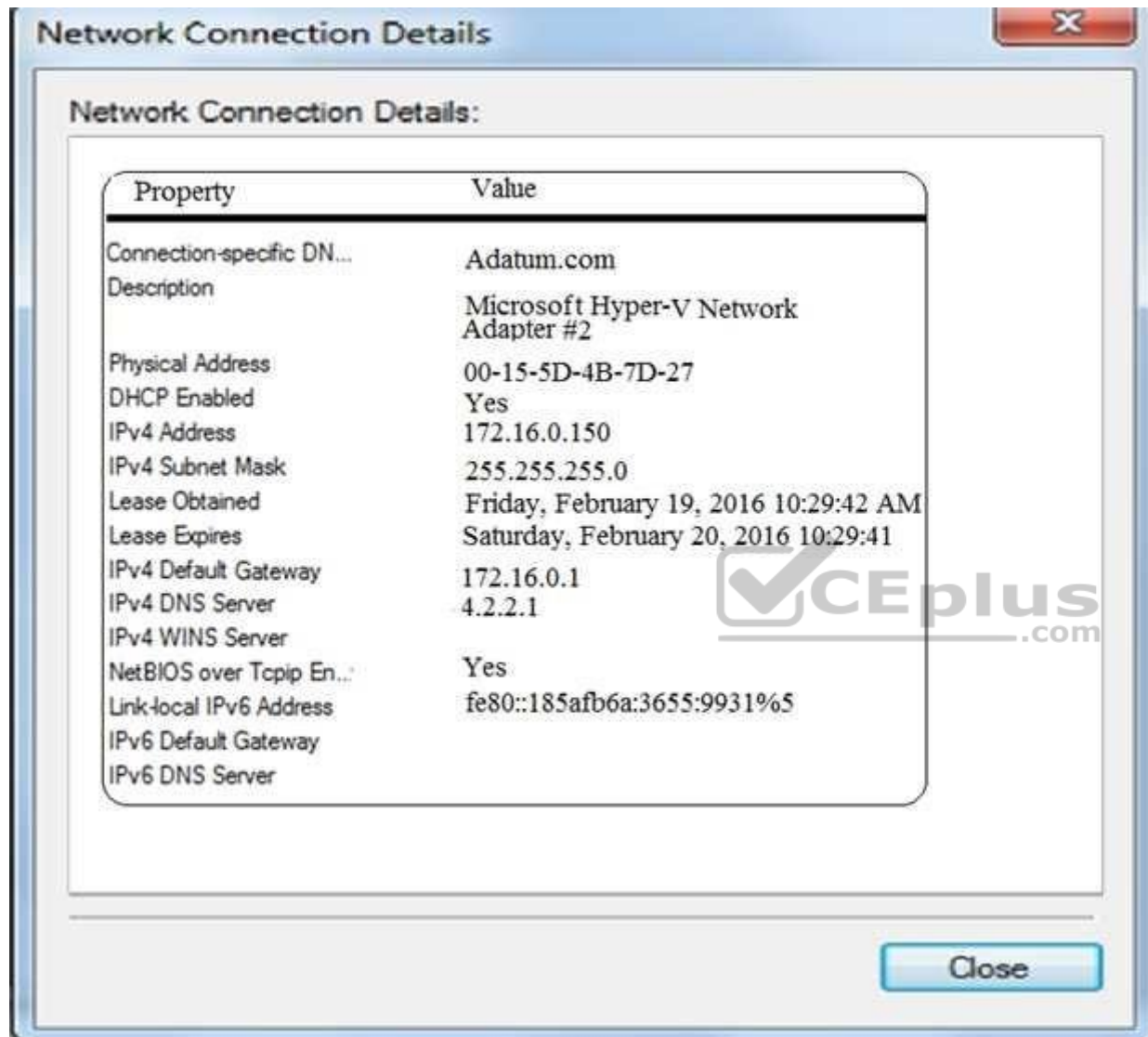
DHCP			
File Action View Help			
			
Option Name	Vendor	Value	Policy Name
003 Router	Standard	172.16.0.1	None
006 DNS Servers	Standard	172.16.0.10	None
015 DNS Domain Name	Standard	Adatum.com	None

A user fails to access internal websites and resources.

The computer of the user has the firewall settings shown in the Firewall Settings exhibit. (Click the **Exhibit** button.)



The computer also has the network settings shown in the Network Settings exhibit. (Click the **Exhibit** button.)



For each of the following statements, select Yes if the statement is true. Otherwise, select No.

**NOTE:** Each correct selection is worth one point.

**Hot Area:**

### Answer Area

Statements	Yes	No
The computer has a valid DHCP lease.	<input type="radio"/>	<input type="radio"/>
The computer is configured to use the correct DNS server.	<input type="radio"/>	<input type="radio"/>
The Windows Firewall service runs on the computer.	<input type="radio"/>	<input type="radio"/>

Correct Answer:

### Answer Area

Statements	Yes	No
The computer has a valid DHCP lease.	<input checked="" type="radio"/>	<input type="radio"/>
The computer is configured to use the correct DNS server.	<input type="radio"/>	<input checked="" type="radio"/>
The Windows Firewall service runs on the computer.	<input checked="" type="radio"/>	<input type="radio"/>

**Section: Configure Networking****Explanation****Explanation/Reference:****QUESTION 87**

A company has 100 client computers that run Windows 10 Enterprise.

A new company policy requires that all client computers have static IPv6 addresses.

You need to assign static IPv6 addresses to the client computers.

Which Network Shell (netsh) command should you run?

- A. **add address**
- B. **set interface**
- C. **set global**
- D. **set address**

**Correct Answer: A**

**Section: Configure Networking****Explanation****Explanation/Reference:**

Explanation:

The add address Network Shell (netsh) command adds an IPv6 address to a specified interface.

References: [https://technet.microsoft.com/en-gb/library/cc740203\(v=ws.10\).aspx#BKMK\\_3](https://technet.microsoft.com/en-gb/library/cc740203(v=ws.10).aspx#BKMK_3)

**QUESTION 88**

A company has 10 portable client computers that run Windows 10 Enterprise.

The portable client computers have the network connections described in the following table.

Network name	Connection type	Network profile
CorpWired	Wired	Private
CorpWifi	Wireless	Public
HotSpot	Public hotspot	Public

None of the computers can discover other computers or devices, regardless of which connection they use.

You need to configure the connections so that the computers can discover other computers or devices only while connected to the CorpWired or CorpWifi connections.

What should you do on the client computers?

- A. For the CorpWifi connection, select Yes, turn on sharing and connect to devices.
- B. Turn on network discovery for the Public profile.
- C. Change the CorpWired connection to public. Turn on network discovery for the Public profile. For the HotSpot connection, select No, don't turn on sharing or connect to devices.
- D. For the CorpWired connection, select Yes, turn on sharing and connect to devices.
- E. Turn on network discovery for the Private profile.

**Correct Answer: C**

**Section: Configure Networking**

**Explanation**

**Explanation/Reference:**

Explanation:

Of the answers given, this is the only single answer that meets the requirements.

Network discovery is a network setting that affects whether your computer can see (find) other computers and devices on the network and whether other computers on the network can see your computer. By default, Windows Firewall blocks network discovery, but you can enable it.

When we change the CorpWired connection to public, all networks will be in the Public profile. Enabling network discovery for the Public profile will enable the computers to see other computers on each network (including HotSpot).

To prevent network discovery on the HotSpot network, we can select No, don't turn on sharing or connect to devices for that network. This will disable Network discovery for the computer's connection to the HotSpot network.

#### **QUESTION 89**

A company has client computers that run Windows 10.

The client computer systems frequently use IPSec tunnels to securely transmit data.

You need to configure the IPSec tunnels to use 256-bit encryption keys.

Which encryption type should you use?

- A. 3DES
- B. DES
- C. RSA
- D. AES

**Correct Answer:** D

**Section:** Configure Networking

**Explanation**

**Explanation/Reference:**

Explanation:

IPSec tunnels can be encrypted by 256-bit AES.

L2TP/IPsec allows multiprotocol traffic to be encrypted and then sent over any medium that supports point-to-point datagram delivery, such as IP or Asynchronous Transfer Mode (ATM).

The L2TP message is encrypted with one of the following protocols by using encryption keys generated from the IKE negotiation process: Advanced Encryption Standard (AES) 256, AES 192, AES 128, and 3DES encryption algorithms.

#### **QUESTION 90**

Your network contains an Active Directory domain. The domain contains 100 Windows 10 client computers. All of the computers secure all connections to computers on the internal network by using IPSec.

The network contains a server that runs a legacy application.

The server does NOT support IPSec.

You need to ensure that some of the Windows 10 computers can connect to the legacy server. The solution must ensure that all other connections are secured by using IPSec.

What should you do?

- A. Modify the settings of the Domain Profile.
- B. Create a connection security rule.
- C. Create an inbound firewall rule.
- D. Modify the settings of the Private Profile.

**Correct Answer:** A

**Section:** Configure Networking

**Explanation**

**Explanation/Reference:**

Explanation:

A firewall profile is a way of grouping settings, such as firewall rules and connection security rules, which are applied to the computer depending on where the computer is connected. On computers running this version of Windows, there are three profiles for Windows Firewall with Advanced Security: Domain, Private, and Public.

The Domain profile is applied to a network adapter when it is connected to a network on which it can detect a domain controller of the domain to which the computer is joined.

References: [https://docs.microsoft.com/en-us/previous-versions/windows/it-pro/windows-server-2008-R2-and-2008/dd448531\(v=ws.10\)](https://docs.microsoft.com/en-us/previous-versions/windows/it-pro/windows-server-2008-R2-and-2008/dd448531(v=ws.10))

### **QUESTION 91**

#### **DRAG DROP**

You administer desktop computers that run Windows 10 Enterprise and are members of an Active Directory domain.

A new security policy states that all traffic between computers in the research department must be encrypted and authenticated by using Kerberos V5. You need to configure the requested traffic authentication settings by using Windows Firewall with Advanced Settings.

Which three actions should you perform in sequence?

**Select and Place:**





	Answer Area
Select <b>Require authentication for inbound and outbound connection</b> , and then for authentication method, select <b>Computer (Kerberos V5)</b> .	
Select <b>Allow on app or feature through Windows Firewall</b> .	
Click to expand <b>Inbound Rule</b> , and then select <b>New Rule</b> .	
Select the rule type <b>Isolation</b> , and then add the IP addresses of the research department computers.	
Click to expand <b>Outbound Rule</b> , and then select <b>New Rule</b> .	
Click to expand <b>Connection Security Rule</b> , and then select <b>New Rule</b> .	
Select the rule type <b>Server-to-Server</b> , and then add the IP addresses of the research department computers.	

Correct Answer:

Answer Area	
	Click to expand <b>Connection Security Rule</b> , and then select <b>New Rule</b> .
Select <b>Allow on app or feature through Windows Firewall</b> .	Select the rule type <b>Isolation</b> , and then add the IP addresses of the research department computers.
Click to expand <b>Inbound Rule</b> , and then select <b>New Rule</b> .	Select <b>Require authentication for inbound and outbound connection</b> , and then for authentication method, select <b>Computer (Kerberos V5)</b> .
Click to expand <b>Outbound Rule</b> , and then select <b>New Rule</b> .	
Select the rule type <b>Server-to-Server</b> , and then add the IP addresses of the research department computers.	

**Section: Configure Networking**  
**Explanation**

**Explanation/Reference:**  
 Explanation:

(Step 1) In the Windows Firewall with Advanced Security MMC snap-in, right-click Connection Security Rules, and then click New Rule.

(Step 2) On the Rule Type page, click Isolation, and then click Next. (The Kerberos option in step 4 below is available only when you specify an Isolation or Custom rule type.)

On the Requirements page, confirm that Request authentication for inbound and outbound connections selected, and then click Next.

(Step 3) On the Authentication Method page, click Computer and user (Kerberos V5), and then click Next.

On the Profile page, clear the Private and Public check boxes, and then click Next.

On the Name page, type Request Inbound Request Outbound, and then click Finish.

### QUESTION 92

You administer Windows 10 Enterprise client computers in your company network.

You change settings on a reference computer by using the Windows Firewall with Advanced Security tool. You want to apply the same settings to other computers.

You need to save the Windows Firewall with Advanced Security configuration settings from the reference computer. You also need to be able to import the configuration settings into a Group Policy object later.

What should you do?

- A. Open Local Group Policy Editor, select the Windows Firewall with Advanced Security node, and then select the Export Policy action.
- B. Run the **netsh advfirewall export c:\settings.wfw** command.
- C. Run the **netsh firewall export c:\settings.xml** command.
- D. Run the **netsh advfirewall export c:\settings.xml** command.

**Correct Answer: B**

**Section: Configure Networking**

**Explanation**

**Explanation/Reference:**

References: [https://docs.microsoft.com/en-us/previous-versions/windows/it-pro/windows-server-2008-R2-and-2008/cc771920\(v=ws.10\)#BKMK\\_1\\_export](https://docs.microsoft.com/en-us/previous-versions/windows/it-pro/windows-server-2008-R2-and-2008/cc771920(v=ws.10)#BKMK_1_export)

### QUESTION 93

You administer Windows 10 devices for an organization. All devices are joined to the domain contoso.com. All network printers are managed in the domain. You have a group named Printer Administrators. You grant these group permissions to manage all printer settings. You add all mobile users to the Printer Administrators group. Each office locations have Web Services for Devices (WSD) printers available.

Managers report that network printers are not available when they move between office locations. Managers must be able to use printers in each office location.

You need to troubleshoot the manager's computer for printing issues.

Which three actions should you perform? Each correct answer is part of the solution. (Choose three.)

**NOTE:** Each correct selection is worth one point.

- A. Ensure that the network type is set to domain.
- B. Ensure that the network type is set to public.

- C. Update the Printing Preferences settings.
- D. Ensure that File and Printer Sharing is turned on.
- E. Ensure that Network Discovery is turned on.

**Correct Answer:** ADE

**Section:** Configure Networking

**Explanation**

**Explanation/Reference:**

#### QUESTION 94

You administer Windows 10 Enterprise client computers in your company network. The company has an Active Directory Domain Services (AD DS) domain. The network uses a DHCP server.

You want to assign a static dynamic host configuration protocol (DHCP) reservation for a client computer.

You need to identify the media access control (MAC) address of the client computer.

Which command should you use?

- A. **ipconfig /allcompartments**
- B. **ipconfig**
- C. **ipconfig /all**
- D. **ipconfig /flushdns**

**Correct Answer:** C

**Section:** Configure Networking

**Explanation**

**Explanation/Reference:**

References:

<https://ithelp.brown.edu/kb/articles/find-the-mac-address-of-a-computer-or-device>

#### QUESTION 95

Your company network includes a main office and multiple small branch offices. All of the computers in the branch offices run Windows 10 Enterprise and are members of an Active Directory domain. The company has no plans to deploy any servers in the branch offices.

Users from some branch offices report that it takes long time to open documents from a file server that is located in the main office.

You need to enable BranchCache on all computers located in the branch offices.

What should you do?

- A. From PowerShell, run the **Enable-BCHostedClients** cmdlet on the branch computers
- B. In the Group Policy editor, enable **BranchCache** in a Hosted Cache mode on the branch computers
- C. In the Group Policy editor, enable **BranchCache** in Distributed Cache mode on the branch computers
- D. From PowerShell, run the **Set-BCCache** cmdlet on the branch computers

**Correct Answer: C**

**Section: Configure Networking**

**Explanation**

**Explanation/Reference:**

References:

<http://www.computerstepbystep.com/set-branchcache-distributed-cache-mode.html> [https://technet.microsoft.com/en-us/library/hh831696\(v=ws.11\).aspx](https://technet.microsoft.com/en-us/library/hh831696(v=ws.11).aspx)

#### **QUESTION 96**

A company has 100 Windows 10 Enterprise client computers. The client computers are members of a workgroup.

A custom application requires a Windows Firewall exception on each client computer.

You need to configure the exception on the client computers without affecting existing firewall settings.

Which Windows PowerShell cmdlet should you run on each client computer?

- A. **Set-NetFirewallRule**
- B. **New-NetFirewallRule**
- C. **New-NetIPSecMainModeRule**
- D. **Set-NetFirewallProfile**
- E. **Set-NetFirewallSetting**

**Correct Answer: B**

**Section: Configure Networking**

**Explanation**

**Explanation/Reference:**

References: <https://technet.microsoft.com/en-us/library/jj554908.aspx>

#### **QUESTION 97**

You administer Windows 10 Enterprise client computers in your company network.

A user reports that her Internet connection is slower than usual.

You need to identify the Process Identifiers (PIDs) of applications that are making connections to the Internet.

Which command should you run?

- A. **netsh set audit-logging**
- B. **netsh show netdls**
- C. **netstat -an**
- D. **netstat -o**
- E. **ipconfig /showclassid**

**Correct Answer: D**

**Section: Configure Networking**

**Explanation**

**Explanation/Reference:**

References: <https://docs.microsoft.com/en-us/windows-server/administration/windows-commands/netstat>

#### **QUESTION 98**

You have an unsecured wireless network for users to connect to from their personal Windows 10 devices.

You need to prevent Wi-Fi Sense from sharing information about the unsecured wireless network.

What should you do?

- A. Configure the SSID of the unsecured wireless to contain \_optout.
- B. Instruct the users to disable Internet Protocol Version 6 (TCP/IPv6) on their wireless network adapters.
- C. Configure the SSID of the guest wireless to be hidden.
- D. Instruct the users to turn off Network Discovery on their devices.

**Correct Answer: A**

**Section: Configure Networking**

**Explanation**

**Explanation/Reference:**

References: <http://www.pcworld.com/article/2951824/windows/how-to-disable-windows-10s-wi-fi-sense-password-sharing.html>

#### **QUESTION 99**

A company has an Active Directory Domain Services (AD DS) domain with Windows 10 Enterprise client computers.

A local printer is shared from a client computer. The client computer user is a member of the Sales AD security group.

You need to ensure that members of the Sales security group can modify the order of documents in the print queue, but not delete the printer share.

Which permission should you grant to the Sales group?

- A. Manage this printer
- B. Print
- C. Manage spooler
- D. Manage queue
- E. Manage documents

**Correct Answer:** E

**Section:** Configure Networking

**Explanation**

**Explanation/Reference:**

Explanation:

The Manage documents permissions allows users to modify the order of documents in the print queue. It does not allow them to delete the printer share.

Incorrect Answers:

A: The Manage this printer permission allows users to delete the printer share.

B: The Print permissions allow users to manage their own documents in the print queue only.

C, D: There are no such permissions. These are part of Manage this printer

#### **QUESTION 100**

You have a computer named Computer1 that runs Windows 10 Enterprise. You add a 1 TB hard drive and create a new volume that has the drive letter D.

You need to limit the amount of space that each user can consume on D: to 200 GB. Members of the Administrators group should have no limit.

Which three actions should you perform? Each correct answer presents part of the solution.

- A. Run fsutil quota violations D:.
- B. Enable the Deny disk space to users exceeding quota limit setting.
- C. Enable the Enable Quota Management setting.
- D. Set a default quota limit.
- E. Run convert D: /FS:NTFS.
- F. Add a quota entry.

**Correct Answer:** BCD

**Section:** Configure Storage

**Explanation**

**Explanation/Reference:**

Explanation:

To limit the amount of space that each user can consume, you should enable the Enable Quota Management setting, and then enter the appropriate values in the Limit Disk Space To text box and the Set Warning Level To text box, and then select the Deny Disk Space To Users Exceeding Quota Limit check box to enforce identical quota limits for all users.

References:

<https://www.windowcentral.com/how-configure-disk-quota-windows-10>

<https://technet.microsoft.com/en-us/library/cc788136.aspx> <https://technet.microsoft.com/en-us/library/bb490885.aspx>

**QUESTION 101**

A company has Windows 10 Enterprise client computers. The company uses Windows BitLocker Drive Encryption and BitLocker Network Unlock on all client computers.

You need to collect information about BitLocker Network Unlock status.

Which command should you run?

- A. Run the **BitLockerWizard** command.
- B. Run the **manage-bde** command.
- C. Run the **BdeHdCfg** command.
- D. Run the **bitsadmin** command.



**Correct Answer: B**

**Section: Configure Storage**

**Explanation**

**Explanation/Reference:**

References:

[https://docs.microsoft.com/en-us/previous-versions/windows/it-pro/windows-7/dd875513\(v=ws.10\)#BKMK\\_status](https://docs.microsoft.com/en-us/previous-versions/windows/it-pro/windows-7/dd875513(v=ws.10)#BKMK_status)

**QUESTION 102**

You administer Windows 10 Enterprise desktops.

You discover that a company employee enabled file encryption on several folders by using a self-signed Encrypted File System (EFS) certificate.

You need to ensure that you are able to decrypt the encrypted files if the user profile is deleted.

What should you do?



- A. Open the Certificates console and connect to the user account certificates. Export the personal self-signed EFS certificate from the Trusted Root Certification Authority folder to a Personal Information Exchange (PFX) file.
- B. Open the Certificates console and connect to the user account certificates. Find the personal self-signed EFS certificate and export it to a Personal Information Exchange (PFX) file.
- C. Open the Certificates console and connect to the computer account certificates. Export the self-signed EFS certificate from the Trusted People folder to a Canonical Encoding Rules (CER) file.
- D. Open the Certificates console and connect to the user account certificates. Export the self-signed EFS certificate from the Trusted People folder to a Canonical Encoding Rules (CER) file.

**Correct Answer: B**

**Section: Configure Storage**

**Explanation**

**Explanation/Reference:**

References:

<https://docs.microsoft.com/en-us/windows/security/information-protection/windows-information-protection/create-and-verify-an-efs-dra-certificate>

#### **QUESTION 103**

You are the system administrator for a company. You have a developer that uses Storage Spaces on their Windows 10 device. The developer has a storage pool that contains five drives. You add four drives to the existing pool on the developer's computer.

You need to ensure that the developer can quickly use the space of the new drives.

Which command or Windows PowerShell cmdlet should you run?

- A. **Optimize-StoragePool**
- B. **Enable-StorageHighAvailability**
- C. **fsutil**
- D. **defrag**
- E. **diskpart**

**Correct Answer: A**

**Section: Configure Storage**

**Explanation**

**Explanation/Reference:**

References:

<https://docs.microsoft.com/en-us/powershell/module/storage/optimize-storagepool?view=win10-ps>

#### **QUESTION 104**

You support Windows 10 Enterprise computers. Your company protects all laptops by using the BitLocker Network Unlock feature.

[www.vceplus.com](http://www.vceplus.com) - VCE Exam Simulator - Download A+ VCE (latest) free Open VCE Exams - VCE to PDF Converter - PDF Online

Some employees will be travelling on company business and will need to work at various locations.

You need to ensure that employees can log on to their laptops while they are travelling.

What should you do?

- A. Provide each of the travelling employees with a laptop that has a Trusted Platform Module (TPM) chip that is version 1.2 or greater.
- B. Use Remote Desktop to login to the traveling employees' laptops and run the **Manage-bde.exe –unlock** command before they disconnect from the company network.
- C. Give each travelling employee his or her BitLocker PIN.
- D. Collect the travelling employee's laptops and enable **BitLocker To Go** on them.

**Correct Answer:** A

**Section:** Configure Storage

**Explanation**

**Explanation/Reference:**

References:

<https://github.com/MicrosoftDocs/windows-itpro-docs/blob/master/windows/security/information-protection/bitlocker/bitlocker-overview.md>

#### QUESTION 105

You purchase a new Windows 10 Enterprise desktop computer. You have four external USB hard drives.

You want to create a single volume by using the four USB drives. You want the volume to be expandable, portable and resilient in the event of failure of an individual USB hard drive.

You need to create the required volume.

What should you do?



<https://vceplus.com/>

- A. From Control Panel, create a new Storage Space across 4 USB hard drives. Set resiliency type to Three-way mirror.

- B. From Control Panel, create a new Storage Space across 4 USB hard drives. Set resiliency type to Parity.
- C. From Disk Management, create a new spanned volume.
- D. From Disk Management, create a new striped volume.

**Correct Answer: B**

**Section: Configure Storage**

**Explanation**

**Explanation/Reference:**

Explanation:

Storage Spaces can combine multiple hard drives into a single virtual drive. To create a storage space, you'll have to connect two or more additional internal or external drives to your computer to create a storage pool. You can also specify an arbitrarily large logical size. When your existing drive begins to fill up and nears the physical limit, Windows will display a notification in the Action Center, prompting you to add additional physical storage space. Selecting the Parity resiliency type allows Windows to store parity information with the data, thereby protecting you from a single drive failure.

References: <http://www.howtogeek.com/109380/how-to-use-windows-8s-storage-spaces-to-mirror-combine-drives/> <https://technet.microsoft.com/en-us/library/cc772180.aspx> <https://technet.microsoft.com/en-us/library/cc732422.aspx>

#### **QUESTION 106**

You support Windows 10 Enterprise computers that are members of an Active Directory domain. Recently, several domain user accounts have been configured with super-mandatory user profiles.

A user reports that she has lost all of her personal data after a computer restart.

You need to configure the user's computer to prevent possible user data loss in the future.

What should you do?

- A. Remove the .man extension from the user profile name.
- B. Configure Folder Redirection by using the domain group policy.
- C. Configure the user's documents library to include folders from network shares.
- D. Add the .dat extension to the user profile name.

**Correct Answer: B**

**Section: Configure Storage**

**Explanation**

**Explanation/Reference:**

Explanation:

Folder Redirection allows administrators to redirect the path of a folder to a new location, which can be a folder on the local computer or a directory on a network file share. Users can then work with documents on a server as if the documents were based on a local drive, but are available to the user from any computer on

the network. Folder Redirection can be found under Windows Settings in the console tree by editing domain-based Group Policy via the Group Policy Management Console (GPMC).

References:

<https://technet.microsoft.com/en-gb/library/cc732275.aspx> <http://windowsitpro.com/systems-management/inside-user-profiles>

#### QUESTION 107

You have a client Windows 10 Enterprise computer. The computer is joined to an Active Directory domain. The computer does not have a Trusted Platform Module (TPM) chip installed.

You need to configure BitLocker Drive Encryption (BitLocker) on the operating system drive.

Which Group Policy object (GPO) setting should you configure?

- A. Allow access to BitLocker-protected fixed data drives from earlier version of Windows.
- B. Require additional authentication at startup.
- C. Allow network unlock at startup.
- D. Configure use of hardware-based encryption for operating system drives.

**Correct Answer: B**

**Section: Configure Storage**

**Explanation**

**Explanation/Reference:**

Explanation:

To make use of BitLocker on a drive without TPM, you should run the gpedit.msc command. You must then access the Require additional authentication at startup setting by navigating to Computer Configuration\Administrative Templates\Windows Components\Bit Locker Drive Encryption\Operating System Drives under Local Computer Policy. You can now enable the feature and tick the Allow BitLocker without a compatible TPM checkbox.

References:

<http://www.howtogeek.com/howto/6229/how-to-use-bitlocker-on-drives-without-tpm/> [https://technet.microsoft.com/en-us/library/jj679890.aspx#BKMK\\_depot4](https://technet.microsoft.com/en-us/library/jj679890.aspx#BKMK_depot4)

#### QUESTION 108

You administer Windows 10 Enterprise desktop computers that are members of an Active Directory domain.

You want to create an archived copy of user profiles that are stored on the desktops. You create a standard domain user account to run a backup task.

You need to grant the backup task user account access to the user profiles.

What should you do?

- A. Add the backup task account to the Remote Management Users group on a domain controller.
- B. Add the backup task account to the Backup Operators group on every computer.
- C. Add the backup task account to the Backup Operators group on a domain controller.
- D. Set the backup task account as NTFS owner on all the profiles.

**Correct Answer:** B

**Section:** Configure Storage

**Explanation**

**Explanation/Reference:**

Explanation:

The Local Backup Operators group can back up and restore files on a computer, regardless of any permission that protect those files.

References:

<https://technet.microsoft.com/en-us/library/cc771990.aspx> <https://technet.microsoft.com/en-us/library/dn579255.aspx> [https://technet.microsoft.com/en-us/library/cc779180\(v=ws.10\).aspx](https://technet.microsoft.com/en-us/library/cc779180(v=ws.10).aspx)

#### **QUESTION 109**

You administer a group of 10 client computers that run Windows 10. The client computers are members of a local workgroup. Employees log on to the client computers by using their Microsoft accounts.

The company plans to use Windows BitLocker Drive Encryption. You need to back up the BitLocker recovery key.

Which two options can you use? (Each correct answer presents a complete solution. Choose two.)

- A. Save the recovery key to a file on the BitLocker-encrypted drive.
- B. Save the recovery key in the Credential Store.
- C. Save the recovery key to OneDrive.
- D. Print the recovery key.

**Correct Answer:** CD

**Section:** Configure Storage

**Explanation**

**Explanation/Reference:**

Explanation:

C: The Bitlocker recovery key is saved in your OneDrive account in the cloud.

D: The recovery key can be printed.

References:

<https://support.microsoft.com/en-us/help/17133/windows-8-bitlocker-recovery-keys-frequently-asked-questions>

### QUESTION 110

You administer computers that run Windows 10 Enterprise and are members of an Active Directory domain. The computers are encrypted with BitLocker and are configured to store BitLocker encryption passwords in Active Directory.

A user reports that he has forgotten the BitLocker encryption password for volume E on his computer. You need to provide the user a BitLocker recovery key to unlock the protected volume.

Which two actions should you perform? Each correct answer presents part of the solution.

- A. Ask the user for his computer name.
- B. Ask the user to run the **manage-bde -unlock E: -pw** command.
- C. Ask the user for his logon name.
- D. Ask the user for a recovery key ID for the protected volume.

**Correct Answer:** AB

**Section:** Configure Storage

**Explanation**

**Explanation/Reference:**

Explanation:

A: To view the recovery passwords for a computer you would need the computer name:

- In Active Directory Users and Computers, locate and then click the container in which the computer is located.
- Right-click the computer object, and then click Properties.
- In the Properties dialog box, click the BitLocker Recovery tab to view the BitLocker recovery passwords that are associated with the particular computer.

B: The Manage-bde: unlock command unlocks a BitLocker-protected drive by using a recovery password or a recovery key.

References:

[https://technet.microsoft.com/en-us/library/dd759200\(v=ws.11\).aspx](https://technet.microsoft.com/en-us/library/dd759200(v=ws.11).aspx) <http://www.concurrency.com/blog/enable-bitlocker-automatically-save-keys-to-active-directory/>

### QUESTION 111

You have a desktop computer that runs Windows 10 Enterprise. You add three new 3-terabyte disks. You need to create a new 9-terabyte volume.

Which two actions should you perform? (Each correct answer presents part of the solution. Choose two.)

- A. From Disk Management, create a new spanned volume.
- B. From Disk Management, convert all of the 3-terabyte disks to GPT.
- C. From PowerShell, run the **New-VirtualDisk** cmdlet.
- D. From Disk Management, bring all disks offline.

- E. From Diskpart, run the **Convert MBR** command.
- F. From PowerShell, run the **Add-PhysicalDisk** cmdlet.

**Correct Answer:** AB

**Section:** Configure Storage

**Explanation**

**Explanation/Reference:**

Explanation:

B: GPT disks can grow to a very large size. The maximum partition (and disk) size is a function of the operating system version. Windows XP and the original release of Windows Server 2003 have a limit of 2TB per physical disk, including all partitions. For Windows Server 2003 SP1, Windows XP x64 edition, and later versions, the maximum raw partition of 18 exabytes can be supported.

A: A spanned volume is a dynamic volume consisting of disk space on more than one physical disk. If a simple volume is not a system volume or boot volume, you can extend it across additional disks to create a spanned volume, or you can create a spanned volume in unallocated space on a dynamic disk. You can make a spanned volume of GPT disks.

References: [https://msdn.microsoft.com/en-us/library/windows/hardware/dn640535\(v=vs.85\).aspx#gpt\\_faq\\_how\\_big](https://msdn.microsoft.com/en-us/library/windows/hardware/dn640535(v=vs.85).aspx#gpt_faq_how_big) <http://msdn.microsoft.com/en-us/library/windows/hardware/gg463524.aspx>

#### QUESTION 112

You administer computers that run Windows 10 Enterprise and are members of an Active Directory domain. Some volumes on the computers are encrypted with BitLocker.

The BitLocker recovery passwords are stored in Active Directory. A user forgets the BitLocker password to local drive E: and is unable to access the protected volume.

You need to provide a BitLocker recovery key to unlock the protected volume.

Which two actions should you perform? (Each correct answer presents part of the solution. Choose two.)

- A. Ask the user to run the **manage-bde-protectors-disable e:** command.
- B. Ask the user for his or her logon name.
- C. Ask the user to run the **manage-bde-unlock E:-pw** command.
- D. Ask the user for his or her computer name.
- E. Ask the user for a recovery key ID for the protected drive.

**Correct Answer:** CD

**Section:** Configure Storage

**Explanation**

**Explanation/Reference:**

Explanation:

D: To view the recovery passwords for a computer you would need the computer name:

In Active Directory Users and Computers, locate and then click the container in which the computer is located.

Right-click the computer object, and then click Properties.

In the Properties dialog box, click the BitLocker Recovery tab to view the BitLocker recovery passwords that are associated with the particular computer.

C: The Manage-bde: unlock command unlocks a BitLocker-protected drive by using a recovery password or a recovery key.

References:

[https://technet.microsoft.com/en-us/library/dd759200\(v=ws.11\).aspx](https://technet.microsoft.com/en-us/library/dd759200(v=ws.11).aspx)

<http://www.concurrency.com/blog/enable-bitlocker-automatically-save-keys-to-active-directory/> <https://docs.microsoft.com/en-us/windows-server/administration/windows-commands/manage-bde-unlock>

**QUESTION 113**

You are the network administrator for Contoso, Ltd. Many users have Windows 10 Enterprise laptops, and your IT department configures all of them to use BitLocker on all fixed drives.

Many users carry sensitive corporate data on their USB drives.

You need to enable BitLocker for these USB drives.

Which key protector option should you use?

- A. a smartcard
- B. a startup key
- C. TPM+PIN
- D. TPM+Password

**Correct Answer: A**

**Section: Configure Storage**

**Explanation**

**Explanation/Reference:**

Explanation:

You have two options. You can choose Password (not TPM+Password) or Smartcard.

References: <https://technet.microsoft.com/en-us/library/ff404223.aspx>

**QUESTION 114**

You purchase a new Windows 10 Enterprise desktop computer. You have six external USB hard drives.



You want to create a single volume by using the six USB drives. You want the volume to be expandable, portable, and resilient in the event of simultaneous failure of two USB hard drives.

You need to create the required volume.

What should you do?

- A. From Control Panel, create a new Storage Space across 6 USB hard drives. Set resiliency type to **Parity**.
- B. From Disk Management, create a new striped volume.
- C. From Disk Management, create a new spanned volume.
- D. From Control Panel, create a new Storage Space across 6 USB hard drives. Set resiliency type to **Three-way mirror**.

**Correct Answer: D**

**Section: Configure Storage**

**Explanation**

**Explanation/Reference:**

Explanation:

Resiliency

Storage Spaces supports four types of resiliency:

Simple: A simple storage space writes one copy of your data and does not protect you from driver failures. This option requires, at least, one drive, and each new additional drive adds another point of failure.

Two-way mirror: This option writes two copies of your data on the drives, which can protect your data from a single driver failure. Two-way mirror requires a least two drives. Three-way mirror: This option works similar to the two-way mirror, but it writes three copies of your data on the drives, which will help you to protect your data from two simultaneous drive failures. Three-way mirror requires, at least, three drives.

Parity: Similar to the standard RAID 5 technology, Parity for a storage space writes your data with parity information on the available driver to help you protect your data from a single driver failure. This option requires a least three drivers

#### **QUESTION 115**

You manage Windows 10 Enterprise desktop and laptop computers for your company. They are part of a Windows Server 2012 R2 Active Directory Domain Services (AD DS) environment. The system administrators implement DFS for flexibility and availability. Laptops are able to connect to the company's private network by using local Ethernet or secure wireless.

Three users report that their files on the server are missing, and they no longer have drive G.

You need to ensure that the three users' computers can access the DFS namespace so that you can troubleshoot by using the DFS client.

What should you do?

- A. Ascertain whether the three users are connected through a wireless or wired connection.
- B. Ensure that the three users have access to the domain NETLOGON share.
- C. Ensure that the Net Logon service is running on all servers that are hosting the DFS namespace.

D. Verify that a share is defined on the folder to which drive G is being mapped.

**Correct Answer:** C

**Section:** Configure Storage

**Explanation**

**Explanation/Reference:**

#### QUESTION 116

You have an Active Directory domain named contoso.com. Work Folders are deployed.

A user named User1 has a Windows 10 Home computer that is configured to use Work Folders.

User1 connects a new removable USB drive to the computer.

User1 needs to move the Work Folders to the new drive.

What should User1 do first?

- A. From the Work Folders settings, click **Stop using Work Folders**.
- B. From Services, stop the Work Folders service.
- C. From Services, set the BitLocker Drive Encryption Service to start automatically.
- D. From the Work Folders settings, click **Manage Credentials**.

**Correct Answer:** A

**Section:** Configure Storage

**Explanation**

**Explanation/Reference:**

References:

<https://support.microsoft.com/en-za/help/27903/windows-10-work-folders-faq>

#### QUESTION 117

You have Windows 10 Enterprise computer at home. You have purchased a new 4-terabyte external drive and attached it to the computer.

You want to create a 2.5-terabyte virtual hard disk (VHD) and store it on the new external drive. You also want to allocate disk space for the virtual disk as needed.

You need to create the required virtual disk.

What should you do?

- A. From Disk Management, select create VHD. For virtual hard disk format, select VHD. For virtual hard type, select Fixed Size.
- [www.vceplus.com](http://www.vceplus.com) - VCE Exam Simulator - Download A+ VCE (latest) free Open VCE Exams - VCE to PDF Converter - PDF Online

- B. From Disk Management, select create VHD. For virtual hard disk format, select VHDX. For virtual hard type, select Dynamically.  
C. From Disk Management, select create VHD. For virtual hard disk format, select VHD. For virtual hard type, select Dynamically. D. From Disk Management, select create VHD. For virtual hard disk format, select VHDX. For virtual hard type, select Fixed Size.

**Correct Answer:** B

**Section:** Configure Storage

**Explanation**

**Explanation/Reference:**

#### QUESTION 118

You have a computer that has the disk configuration shown in the following table:

Disk controller	Size	Purpose
0	128 GB	System and boot
1	256 GB	Not applicable
2	256 GB	Not applicable
3	256 GB	Not applicable

You need to configure a storage space that will provide data redundancy if a disk fails.

The solution must minimize impact if a disk fails.

Which resiliency type should you choose?

- A. three-way mirror
- B. two-way mirror
- C. simple
- D. parity

**Correct Answer:** B

**Section:** Configure Storage

**Explanation**

**Explanation/Reference:**

References:

[https://social.technet.microsoft.com/wiki/contents/articles/11382.storage-spaces-frequently-asked-questionsfaq.aspx#What\\_types\\_of\\_drives\\_can\\_I\\_use\\_with\\_Storage\\_Spaces](https://social.technet.microsoft.com/wiki/contents/articles/11382.storage-spaces-frequently-asked-questionsfaq.aspx#What_types_of_drives_can_I_use_with_Storage_Spaces)

#### QUESTION 119

You administer Windows 10 Enterprise client computers in your company network. A computer that is used by non-administrator users has a directory named C:\Folder1.

A shared collection of Microsoft Excel files is stored in the C:\Folder1 directory, with non-administrator users being granted modify permissions to the directory.

You discover that some files have been incorrectly modified by a user.

You need to determine which users are making changes to the files in the directory.

Which two actions should you perform? Each correct answer presents part of the solution.

**NOTE:** Each correct selection is worth one point.

- A. Set local policy: Computer Configuration\Windows Settings\Security Settings\Local Policies\Audit Policy\Audit object access to **Failure**.
- B. From the Auditing Entry for Folder1, set the Principal to **Everyone**, and then set the **Type** to **Failure** for the Modify permission.
- C. From the Auditing Entry for Folder1, set the Principal to **Guests**, and then set the **Type** to **Success** for the Modify permission.
- D. Set local policy: Computer Configuration\Windows Settings\Security Settings\Local Policies\Audit Policy\Audit object access to **Success**.
- E. From the Auditing Entry for Folder1, set the Principal to **Guests**, and then set the **Type** to **Failure** for the Modify permission.
- F. From the Auditing Entry for Folder, set the Principal to **Everyone**, and then set the **Type** to **Success** for the Modify permission.

**Correct Answer:** DF

**Section:** Manage Data Access and Protection

**Explanation**

**Explanation/Reference:**

#### **QUESTION 120**

**DRAG DROP**

As part of its upgrade to Windows 10 Enterprise, your company is implementing additional security controls relating to data access.

You need to implement a solution that meets the following requirements:

- Secure all data on local hard drives. ▪

Limit users' ability to modify files.

Which feature should you use to meet each requirement? To answer, drag the appropriate feature or features to the correct requirement or requirements. Each feature may be used once, more than once, or not at all. You may need to drag the split bar between panes or scroll to view content.

**NOTE:** Each correct selection is worth one point.

**Select and Place:**

## Features

NTFS Permissions

Remote Business  
Data Removal

EFS

BitLocker

## Answer Area

Secure all data on  
local hard drives.

Limit users' ability to  
modify files.



Correct Answer:

## Features

Remote Business Data Removal
EFS

## Answer Area

Secure all data on local hard drives.

BitLocker

Limit users' ability to modify files.

NTFS Permissions



### Section: Manage Data Access and Protection

#### Explanation

#### Explanation/Reference:

#### QUESTION 121

**Note:** This question is part of a series of questions that use the same or similar answer choices. An answer choice may be correct for more than one question in the series. Each question is independent of the other questions in this series. Information and details provided in a question apply only to that question.

You have five computers that run Windows 10. You are the only user who uses the computers. All of the computers are members of the same domain.

You need to ensure that you can access any file on any of the computers over the Internet.

What should you configure?

A. account policies

- B. share permissions
- C. application control policies
- D. NTFS permissions
- E. HomeGroup settings
- F. software restriction policies
- G. Encrypting File System (EFS) settings
- H. Microsoft OneDrive

**Correct Answer:** H

**Section:** Manage Data Access and Protection

**Explanation**

**Explanation/Reference:**

#### QUESTION 122

You administer a Windows 10 Enterprise computer.

The computer is configured to encrypt several folders by using a self-signed Encrypted File System (EFS) certificate.

You need to make a backup copy of the encryption keys.

What should you do?

- A. Open the Certificates console and connect to the user account certificates. Export the self-signed EFS certificate from the Trusted People folder to a Canonical Encoding Rules (CER) file.
- B. Open the Certificates console and connect to the user account certificates. Find the personal self-signed EFS certificate and export it to a Personal Information Exchange (PFX) file.
- C. Open the Certificates console and connect to the user account certificates. Export the personal self-signed EFS certificate from the Trusted Root Certification Authority folder to a Personal Information Exchange (PFX) file.
- D. Open the Certificates console and connect to the computer account certificates. Export the self-signed EFS certificate from the Trusted People folder to a Canonical Encoding Rules(CER) file.

**Correct Answer:** B

**Section:** Manage Data Access and Protection

**Explanation**

**Explanation/Reference:**

#### QUESTION 123

A company has Windows 10 Enterprise client computers. All user data is stored locally. Each data file has a system access control list (SACL).

You need to ensure that an event is generated when a user modifies a local file.

Which audit policy setting should you configure?

- A. Audit process tracking
- B. Audit object access
- C. Audit policy change
- D. Audit privilege use

**Correct Answer: B**

**Section: Manage Data Access and Protection**

**Explanation**

**Explanation/Reference:**

#### **QUESTION 124**

You have a Windows 10 Enterprise computer that is connected to an Active Directory Domain Services (AD DS) domain. You create a folder and share the folder with everyone in your organization.

You need to modify the NTFS permissions of the folder to meet the following criteria:

- Users from the Supervisors AD security group must be able to open files, but not modify them.
  - Users from the Marketing AD security group must be able to create, modify, and delete files. ▪
- Users from both groups must not be able to delete the folder.

Which permissions should you set?

- A. Assign the Supervisors group the Read and Write permissions. Assign the Marketing group the Modify permission and the Delete Subfolders and Files special permission.
- B. Assign the Supervisors group the Read and Write permissions. Assign the Marketing group the Full Control permission.
- C. Assign the Supervisors group the Read permission. Assign the Marketing group the Read and Write permissions and the Delete special permission.
- D. Assign the Supervisors group the Read permission. Assign the Marketing group the Read and Write permissions and the Delete Subfolders and Files special permission.

**Correct Answer: D**

**Section: Manage Data Access and Protection**

**Explanation**

**Explanation/Reference:**

#### **QUESTION 125**



**Note:** This question is part of a series of questions that present the same scenario. Each question in the series contains a unique solution that might meet the stated goals. Some question sets might have more than one correct solution, while others might not have a correct solution.

**After you answer a question in this section, you will NOT be able to return to it. As a result, these questions will not appear in the review screen.**

Your company uses Microsoft Office 365.

You need to ensure that users are prompted to label and classify documents while they edit documents.

Solution: You configure an Office 365 data loss prevention (DLP) policy.

Does the solution meet the goal?

- A. Yes
- B. No

**Correct Answer:** B

**Section:** Manage Data Access and Protection

**Explanation**

**Explanation/Reference:**

References:

<https://docs.microsoft.com/en-us/information-protection/deploy-use/configure-policy>



## QUESTION 126

**Note:** This question is part of a series of questions that use the same or similar answer choices. An answer choice may be correct for more than one question in the series. Each question is independent of the other questions in this series. Information and details provided in a question apply only to that question.

You have five computers that run Windows 10. The computers are used for testing and cannot connect to the Internet. You are the only user who uses the computers. All of the computers are members of the same domain.

One of the computers contains a folder named Folder1.

You need to ensure that you can access Folder1 from any of the computers.

What should you configure?

- A. HomeGroup settings
- B. OneDrive for Business
- C. NTFS permissions
- D. Encrypting File System (EFS) settings
- E. share permissions

- F. application control policies
- G. account policies
- H. software restriction policies

**Correct Answer:** A

**Section:** Manage Data Access and Protection

**Explanation**

**Explanation/Reference:**

References:

<https://www.teamknowhow.com/kit-guide/computing/laptops/dell/inspiron-13-5000/how-to-set-up-file-sharing-on-windows-10>

#### QUESTION 127

**This question is part of a series of questions that use the same or similar answer choices. An answer choice may be correct for more than one question in the series. Each question is independent of the other questions in this series. Information and details provided in a question apply only to that question.**

You have a computer that runs Windows 10 and is used by 10 users. The computer is joined to an Active Directory domain. Each user has an Active Directory account.

You need to ensure that all of the users can access the files located in one another's libraries.

Which two options should you configure? Each correct answer presents a complete solution.

**NOTE:** Each correct selection is worth one point.

- A. account policies
- B. NTFS permissions
- C. share permissions
- D. application control policies
- E. software restriction policies
- F. Encrypting File System (EFS) settings
- G. OneDrive for Business
- H. HomeGroup settings

**Correct Answer:** BH

**Section:** Manage Data Access and Protection

**Explanation**

**Explanation/Reference:**

#### QUESTION 128

You work for a small company that recently upgraded to Windows 10 Enterprise computers.

The HR department stores sensitive data in a folder named Personnel Files.

You need to encrypt this folder only, and no other data.

What are two possible ways to achieve this goal? Each correct answer presents a complete solution.

**NOTE:** Each correct selection is worth one point.

- A. Use EFS.
- B. Use cipher.exe.
- C. Use BitLocker
- D. Use REFS.

**Correct Answer:** AB

**Section:** Manage Data Access and Protection

**Explanation**

**Explanation/Reference:**

References:

<https://windowsreport.com/encrypt-files-folders-windows-10/>

<https://support.microsoft.com/en-us/help/298009/cipher-exe-security-tool-for-the-encrypting-file-system> **QUESTION 129**

All computers are connected to Homegroup. User wants to share a printer.

The printer function for the computer it is attached to.

You verify that printers are enabled under homegroup settings, but the printer does not appear on the network.

The user is able to share documents and access other shared printers in the Homegroup.

You need to allow other users to use the printer.

What should you do?

- A. Enable sharing under the printer properties
- B. Map the printer on the client computers
- C. Update the printer driver to a version that supports homegroup sharing
- D. Disable and reenble the sharing of printers under homegroup on the computer

**Correct Answer:** A

**Section:** Manage Data Access and Protection

**Explanation**

**Explanation/Reference:**

References:

<https://www.howtogeek.com/howto/windows-7/share-files-and-printers-in-windows-7-with-homegroup/>

**QUESTION 130**

A company has a main office and several branch offices. The company has an Active Directory Domain Services (AD DS) domain with Windows 10 Enterprise client computers. All printers are deployed to all client computers by using Group Policy.

When a user attempts to print from his portable client computer while at a branch office, the main office printer is set as his default printer.

You need to ensure that a location-specific default printer for each branch office is set for the user. What should you do?

- A. In the Manage Default Printers dialog box, select the **Change my default printer when I change networks** option.
- B. In the Manage Default Printers dialog box, select the **Always use the same printer as my default printer** option.
- C. Create a Group Policy object (GPO) that enables the **Computer location** policy setting.
- D. Create a Group Policy object (GPO) that enables the **Allow Print Spooler to accept client connections** policy settings. **Correct Answer: D**

**Section: Manage Data Access and Protection****Explanation****Explanation/Reference:**

References:

<https://support.microsoft.com/en-za/help/234270/how-to-use-group-policy-settings-to-control-printers-in-active-directo>

**QUESTION 131**

You have a Windows 10 Enterprise computer.

The computer has a shared folder named C:\Marketing. The shared folder is on an NTFS volume.

The current NTFS and share permissions are configured as follows.

Group name	NTFS permission	Shared folder permission
Everyone	Read and Execute	Read
Marketing	Modify	Full Control

UserA is a member of both the Everyone group and the Marketing group. UserA must access C:\Marketing from across the network. You need to identify the effective permissions of UserA to the C:\Marketing folder.

What permission should you identify?

- A. Full Control
- B. Read and Execute
- C. Read
- D. Modify

**Correct Answer:** D

**Section:** Manage Data Access and Protection

**Explanation**

**Explanation/Reference:**

Explanation:

UserA is a member of both the Everyone group and the Marketing group and UserA must access C:\Marketing from across the network.

When accessing a file locally, you combine the NTFS permissions granted to your account either directly or by way of group membership. The 'least' restrictive permission is then the permission that applies.

In this question, the NTFS permission is the least restrictive of Read/Execute and Modify... so Modify is the effective permission.

When accessing a folder or file across the network, you combine the effective NTFS permissions (Modify in this case) with the effective Share permissions granted to your account either directly or by way of group membership (Full Control in this case). The 'most' restrictive permission is then the permission that applies.

Modify is more restrictive than Full Control so Modify is the effective permission.

### QUESTION 132

At home, you use a Windows 10 desktop computer. At work, you use a Windows 10 laptop that is connected to a corporate network. You use the same Microsoft account to log on to both computers.

You have a folder with some personal documents on your desktop computer. The folder must be available and synced between both computers.

You need to ensure that the latest version of these files is available. What should you do?



<https://vceplus.com/>

- A. Create a folder by using **OneDrive for Windows**. Move all of the personal documents to the new folder.
- B. Move the folder to the **Libraries** folder. Go to **PC Settings**. Under Sync your settings, enable **App settings**.
- C. Right-click the folder and click **Properties**. Under Security, provide **Full Control** for the Microsoft account.
- D. Right-click the folder and select **Share With**, and then select **Homegroup (view and edit)**.

**Correct Answer:** A

**Section:** Manage Data Access and Protection

**Explanation**

**Explanation/Reference:**

Explanation:

To save a doc you're working on to OneDrive, select a OneDrive folder from the list of save locations. To move files to OneDrive, open File Explorer and then drag them into a OneDrive folder.

Note: OneDrive (previously SkyDrive, Windows Live SkyDrive, and Windows Live Folders) is a file hosting service that allows users to sync files and later access them from a web browser or mobile device. Users can share files publicly or with their contacts; publicly shared files do not require a Microsoft account to access them. OneDrive is included in the suite of online services formerly known as WindowsLive.

References: <https://www.windowscentral.com/how-create-one-large-volume-using-multiple-hard-drives-windows-10>

[https://docs.microsoft.com/en-us/previous-versions/windows/it-pro/windows-server-2008-R2-and-2008/cc725671\(v=ws.11\)](https://docs.microsoft.com/en-us/previous-versions/windows/it-pro/windows-server-2008-R2-and-2008/cc725671(v=ws.11))

### **QUESTION 133**

You are a systems administrator of a small branch office. Computers in the office are joined to a Windows 10 HomeGroup.

The HomeGroup includes one shared printer and several shared folders.

You join a new computer to the HomeGroup and try to access the HomeGroup shared folders. You discover that the shared folders are unavailable, and you receive an error message that indicates the password is incorrect.

You need to reconfigure the new computer in order to access the HomeGroup resources.

What should you do?

- A. Adjust the time settings on the new computer to match the time settings of the HomeGroup computers.
- B. Change the Enterprise password and re-enter it on the computers of all members of the HomeGroup.
- C. Change the default sharing configuration for the shared folders on the HomeGroup computers.
- D. Reset your account password to match the HomeGroup password.

**Correct Answer:** A

**Section:** Manage Data Access and Protection

**Explanation**

**Explanation/Reference:**

Explanation:

Symptoms

When joining a system to a HomeGroup, you may receive the following error message "The password is incorrect", even though you have typed the password correctly.

#### Cause

This can be caused by a difference in the Date and Time settings on the computer trying to join the HomeGroup, and not an invalid password. If the date/time of the computer joining a HomeGroup is greater than 24 hours apart from the date/time of the system that owns the HomeGroup, this will cause the error.

#### Resolution

Adjust the date/time settings on the system joining the HomeGroup, to match the system that owns the HomeGroup, and then try to join again.

#### QUESTION 134

**Note: This question is part of a series of questions that use the same or similar answer choices. An answer choice may be correct for more than one question in the series. Each question is independent of the other questions in this series. Information and details provided in a question apply only to that question.**

You have a computer that runs Windows 10 and is used by 10 users. The computer is joined to an Active Directory domain. All of the users are members of the Administrators group. Each user has an Active Directory account.

You have a Microsoft Word document that contains confidential information.

You need to ensure that you are the only user who can open the document.

What should you configure?

- A. account policies
- B. application control policies
- C. HomeGroup settings
- D. software restriction policies
- E. NTFS permissions
- F. Microsoft OneDrive
- G. share permissions
- H. Encrypting File System (EFS) settings

**Correct Answer: H**

**Section: Manage Data Access and Protection**

**Explanation**

**Explanation/Reference:**

#### QUESTION 135

A company has an Active Directory Domain Services (AD DS) domain. All client computers run Windows 10 Enterprise and are joined to the domain.

You have the following requirements:

- Ensure that files in shared network folders are available offline.
- Maximize efficiency for users who connect to shared network folders from a mobile device.

You need to configure Group Policy settings to meet the requirements.

What should you do first?

- A. Enable the Enable file synchronization on costed networks policy setting.
- B. Enable the Synchronize all offline files when logging on policy settings.
- C. Enable and configure the Configure slow-link mode policy setting.
- D. Enable and configure the Specify administratively assigned Offline Files policy setting.

**Correct Answer: C**

**Section: Manage Data Access and Protection**

**Explanation**

**Explanation/Reference:**

References:

<https://technet.microsoft.com/en-us/library/hh968298.aspx>

#### **QUESTION 136**

You manage a client Windows 10 Enterprise computer named Computer1.

You have a OneDrive synchronized folder that contains .pdf files.

You need to ensure that you can restore previous versions of the .pdf files.

What should you do?

- A. Enable File History.
- B. Configure System Restore.
- C. Configure Computer1 as a trusted PC.
- D. Enable Sync your settings on Computer1.

**Correct Answer: A**

**Section: Manage Data Access and Protection**

**Explanation**

**Explanation/Reference:**

Explanation:

File History regularly backs up versions of your files in the Documents, Music, Pictures, Videos, and Desktop folders and the OneDrive files available offline on your PC. Over time, you'll have a complete history of your files. If the originals are lost, damaged, or deleted, you can restore them.

You can also browse and restore different versions of your files. For example, if you want to restore an older version of a file (even if it wasn't deleted or lost), you can browse through a timeline, select the version you want, and restore it.

#### **QUESTION 137**

[www.vceplus.com](http://www.vceplus.com) - VCE Exam Simulator - Download A+ VCE (latest) free Open VCE Exams - VCE to PDF Converter - PDF Online



You have a laptop that is a member of a workgroup. The laptop does not have a Trusted Platform Module (TPM) chip.

You plan to enable BitLocker Drive Encryption (BitLocker) for the operating system drive.

What are two methods that you can use to unlock the drive when the laptop restarts? Each correct answer presents a complete solution.

- A. a password
- B. a Near Field Communication (NFC)-enabled portable device
- C. a USB drive
- D. a user account
- E. Network Unlock

**Correct Answer:** AC

**Section:** Manage Data Access and Protection

**Explanation**

**Explanation/Reference:**

References: <http://www.howtogeek.com/howto/6229/how-to-use-bitlocker-on-drives-without-tpm/>

#### QUESTION 138

**Note:** This question is part of a series of questions that present the same scenario. Each question in the series contains a unique solution that might meet the stated goals. Some question sets might have more than one correct solution, while others might not have a correct solution.

**After you answer a question in this section, you will NOT be able to return to it. As a result, these questions will not appear in the review screen.**

You are the system administrator for a sales company. You manage the Microsoft Office 365 environment for your company. You are investigating the requirements for Office 365 data loss prevention (DLP). All users have an Enterprise E5 license.

You must ensure that all users are prevented from storing social security numbers in Office 365.

You need to implement a DLP policy that meets the requirement.

Solution: Create a DLP policy with Microsoft Exchange Online as a content source location.

Does the solution meet the goal?

- A. Yes
- B. No

**Correct Answer:** B

**Section:** Manage Data Access and Protection

**Explanation**

**Explanation/Reference:**

References:

<https://docs.microsoft.com/en-us/office365/securitycompliance/data-loss-prevention-policies>

**QUESTION 139**

**Note:** This question is part of a series of questions that present the same scenario. Each question in the series contains a unique solution that might meet the stated goals. Some question sets might have more than one correct solution, while others might not have a correct solution.

**After you answer a question in this section, you will NOT be able to return to it. As a result, these questions will not appear in the review screen.**

You are the system administrator for a sales company. You manage the Microsoft Office 365 environment for your company. You are investigating the requirements for Office 365 data loss prevention (DLP). All users have an Enterprise E5 license.

You must ensure that all users are prevented from storing social security numbers in Office 365.

You need to implement a DLP policy that meets the requirement.

Solution: Create a DLP policy with Microsoft SharePoint Online as a content source location.

Does the solution meet the goal?

- A. Yes
- B. No

**Correct Answer: A**

**Section: Manage Data Access and Protection**

**Explanation**

**Explanation/Reference:**

References:

<https://docs.microsoft.com/en-us/office365/securitycompliance/data-loss-prevention-policies>

**QUESTION 140**

**Note:** This question is part of a series of questions that present the same scenario. Each question in the series contains a unique solution that might meet the stated goals. Some question sets might have more than one correct solution, while others might not have a correct solution.

**After you answer a question in this section, you will NOT be able to return to it. As a result, these questions will not appear in the review screen.**

You are the system administrator for a sales company. You manage the Microsoft Office 365 environment for your company. You are investigating the requirements for Office 365 data loss prevention (DLP). All users have an Enterprise E5 license.

You must ensure that all users are prevented from storing social security numbers in Office 365.

You need to implement a DLP policy that meets the requirement.

Solution: Create a DLP policy with Yammer as a content source location.

Does the solution meet the goal?

- A. Yes
- B. No

**Correct Answer: B**

**Section: Manage Data Access and Protection**

**Explanation**

**Explanation/Reference:**

References:

<https://docs.microsoft.com/en-us/office365/securitycompliance/data-loss-prevention-policies>

#### **QUESTION 141**

A company has Windows 10 Enterprise client computers. A client computer named COMPUTER1 has a shared folder named Folder1 located in the user's Downloads folder. Folder1 is shared only with employees in the Marketing department. All Marketing employees can connect to Folder1 from their client computers.

A Marketing employee is unable to connect to Folder1 from a legacy device that is not compatible with the Windows 10 Enterprise default sharing settings. The device is able to connect to resources on other client computers.

You need to configure COMPUTER1 to allow the device to connect to Folder1.

Which setting should you enable?

- A. Enable file sharing for devices that use 40- or 56-bit encryption
- B. Turn off password protected sharing
- C. Use 128-bit encryption to help protect file sharing connections
- D. Turn off network discovery
- E. Turn on sharing so anyone with network access can read and write files in the Public folders.

**Correct Answer: A**

**Section: Manage Data Access and Protection**

**Explanation**

**Explanation/Reference:**

References:

<http://www.tenforums.com/tutorials/51024-file-sharing-encryption-level-change-windows-10-a.html>

#### QUESTION 142

**Note:** This question is part of a series of questions that use the same or similar answer choices. An answer choice may be correct for more than one question in the series. Each question is independent of the other questions in this series. Information and details in a question apply only to that question.

On the corporate network, you have an Active Directory user account. The domain contains a sync share named Share1.

You have a personal computer that runs Windows 10. The computer is a member of a workgroup.

You need to access the files in Share1.

Which Control Panel application should you use?

- A. Phone and Modem
- B. Network and Sharing Center
- C. RemoteApp and Desktop Connections
- D. Power Options
- E. System
- F. Sync Center
- G. Credential Manager
- H. Work Folders



**Correct Answer:** H

**Section:** Manage Data Access and Protection

**Explanation**

**Explanation/Reference:**

References:

<http://thesolving.com/storage/how-to-set-up-a-work-folders-sync-share-on-windows-server-2012-r2/>

<https://support.microsoft.com/en-za/help/27903/windows-10-work-folders-faq>

#### QUESTION 143

**Note:** This question is part of a series of questions that present the same scenario. Each question in the series contains a unique solution that might meet the stated goals. Some question sets might have more than one correct solution, while others might not have a correct solution.

**After you answer a question in this section, you will NOT be able to return to it. As a result, these questions will not appear in the review screen.**

You are the system administrator for a sales company. You manage the Microsoft Office 365 environment for your company. You are investigating the requirements for Office 365 data loss prevention (DLP). All users have an Enterprise E5 license.

You must ensure that all users are prevented from storing social security numbers in Office 365.

You need to implement a DLP policy that meets the requirement.

Solution: Create a DLP policy with Microsoft OneDrive for Business sites as a content source location.

Does the solution meet the goal?

- A. Yes
- B. No

**Correct Answer: B**

**Section: Manage Data Access and Protection**

**Explanation**

**Explanation/Reference:**

<https://docs.microsoft.com/en-us/office365/securitycompliance/data-loss-prevention-policies>

#### QUESTION 144

You administer Windows 10 Enterprise computers in your company network. All computers are members of an Active Directory Domain Services (AD DS) domain. A server named Server1 runs Windows Server 2012 R2 and has an IP address of 10.10.10.20. Server1 is configured to use port 10987 for Remote Desktop connections.

From your Windows 10 Enterprise computer, you need to create a Remote Desktop connection to Server1.

What should you do?

- A. Run **mstsc.exe /v:10.10.10.20:10987**.
- B. Run **mstsc.exe /v:10.10.10.20 /p:10987**.
- C. From the General tab of your Remote Desktop connection, enter **10.10.10.20 port:10987**.
- D. From the Advanced tab of your Remote Desktop connection, configure the port of Server1 in the server authentication field.

**Correct Answer: A**

**Section: Manage Remote Access**

**Explanation**

**Explanation/Reference:**

References: <https://docs.microsoft.com/en-us/windows-server/administration/windows-commands/mstsc>

#### QUESTION 145

You configure VPN auto trigger for five Windows 10 Enterprise computers. When you test the computers, they trigger the VPN all the time, even in the office.

You need to configure VPN auto trigger to function only when VPN is required.

Which command should you use?

- A. **Set -VpnConnectionTriggerDnsConfiguration** [ -Name] <string> [ -DnsSuffix <String>] [ -DnsIpAddress <string[]>] [ -DnsSuffixSearchList
- B. **Add -VpnConnectionTriggerApplication** [ -Name] <string> -ApplicationID <String[]> -PassThru
- C. **Add -VpnConnectionTriggerTrusted Network** [ -Name] <string> [ -DnsSuffix] <string[]>
- D. **Add -VpnConnectionTriggerDnsConfiguration** [ -Name] <string> -DnsSuffix <String> [ -DnsIpAddress <string[]>] -PassThru

**Correct Answer:** C

**Section:** Manage Remote Access

**Explanation**

**Explanation/Reference:**

#### QUESTION 146

**Note:** This question is part of a series of questions that present the same scenario. Each question in the series contains a unique solution that might meet the stated goals. Some question sets might have more than one correct solution, while others might not have a correct solution.

**After you answer a question in this section, you will NOT be able to return to it. As a result, these questions will not appear in the review screen.**

You manage a corporate network. All servers run Windows Server 2016. All servers and client devices are joined to an Active Directory Domain Services (AD DS) domain named adatum.com. The use of VPN servers on the network is strictly prohibited.

Users must be able to access the corporate network in addition to Work Folders when they work at home on Windows 10 devices. You install, configure, and publish the certificate revocation list (CRL) for an internal Active Directory Certificate Services (AD CS) server.

You need to configure the environment to allow your users to register devices.

Solution: You create a DNS CNAME record of enterpriseregistration.adatum.com. You deploy a Web Application Proxy server and point the DNS record to your Web Application Proxy server.

Does the solution meet the goal?

- A. Yes
- B. No

**Correct Answer:** B

**Section:** Manage Remote Access

**Explanation**

**Explanation/Reference:**

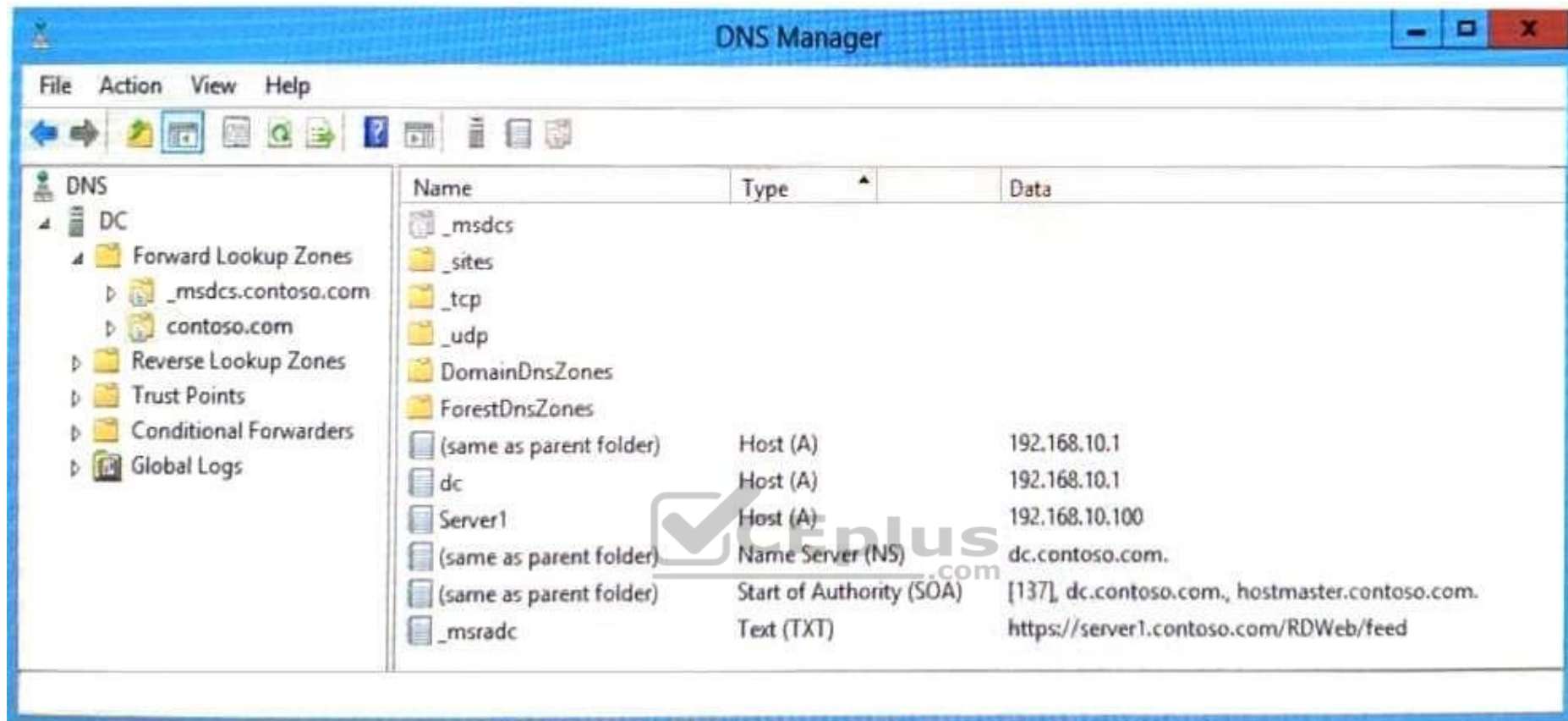
References: <https://blog.nextxpert.com/2013/11/27/publishing-work-folders-with-web-application-proxy-2/>

**QUESTION 147**

You have an Active Directory domain named contoso.com. You use RemoteApp to make applications available to Android and iOS users.

The external DNS zone for contoso.com is shown in the exhibit. (Click the **Exhibit** button.)





You need to provide a user with the connection URL for the Remote Desktop app on an Android device.

Which connection URL should you provide?

- A. <https://server1.contoso.com/RDWeb/feed/webfeed.aspx>
- B. [server1.contoso.com](https://server1.contoso.com)
- C. <https://server1.contoso.com/RDWeb/feed>
- D. [\\_msrads.contoso.com](https://_msrads.contoso.com)

**Correct Answer: B**

**Section: Manage Remote Access**

**Explanation**

**Explanation/Reference:**

[www.vceplus.com](http://www.vceplus.com) - VCE Exam Simulator - Download A+ VCE (latest) free Open VCE Exams - VCE to PDF Converter - PDF Online



References: <https://www.rdsurus.com/working-with-rd-web-access-in-windows-server-2012/>

#### QUESTION 148

**Note:** This question is part of a series of questions that present the same scenario. Each question in the series contains a unique solution that might meet the stated goals. Some question sets might have more than one correct solution, while others might not have a correct solution.

**After you answer a question in this section, you will NOT be able to return to it. As a result, these questions will not appear in the review screen.**

You manage a corporate network. All servers run Windows Server 2016. All servers and client devices are joined to an Active Directory Domain Services (AD DS) domain named adatum.com. The use of VPN servers on the network is strictly prohibited.

Users must be able to access the corporate network in addition to Work Folders when they work at home on Windows 10 devices. You install, configure, and publish the certificate revocation list (CRL) for an internal Active Directory Certificate Services (AD CS) server.

You need to configure the environment to allow your users to register devices.

Solution: You create a DNS CNAME record of enterpriseregistration.adatum.com. You deploy Active Directory Federation Services (AD FS) and point the DNS record to your AD FS server. You deploy a Web Application Proxy server for the clients to connect to establish Internet connectivity to the device registration connection.

Does the solution meet the goal?

- A. Yes
- B. No

**Correct Answer:** A

**Section:** Manage Remote Access

**Explanation**

**Explanation/Reference:**

References:

<https://blog.nextxpert.com/2013/11/27/publishing-work-folders-with-web-application-proxy-2/>

#### QUESTION 149

**Note:** This question is part of a series of questions that present the same scenario. Each question in the series contains a unique solution that might meet the stated goals. Some question sets might have more than one correct solution, while others might not have a correct solution.

**After you answer a question in this section, you will NOT be able to return to it. As a result, these questions will not appear in the review screen.**

You manage a corporate network. All servers run Windows Server 2016. All servers and client devices are joined to an Active Directory Domain Services (AD DS) domain named adatum.com. The use of VPN servers on the network is strictly prohibited.

Users must be able to access the corporate network in addition to Work Folders when they work at home on Windows 10 devices. You install, configure, and publish the certificate revocation list (CRL) for an internal Active Directory Certificate Services (AD CS) server.

You need to configure the environment to allow your users to register devices.

Solution: You create a DNS A record of deviceregistration.adatum.com. You deploy Active Directory Federation Services (AD FS) and point the DNS record to your AD FS server. You deploy a Web Application Proxy server for the clients to establish Internet connectivity for the device registration.

Does the solution meet the goal?

- A. Yes
- B. No

**Correct Answer: B**

**Section: Manage Remote Access**

**Explanation**

**Explanation/Reference:**

References:

<https://blog.nextxpert.com/2013/11/27/publishing-work-folders-with-web-application-proxy-2/>

#### QUESTION 150

**Note: This question is part of a series of questions that use the same or similar answer choices. An answer choice may be correct for more than one question in the series. Each question is independent of the other questions in this series. Information and details provided in a question apply only to that question.**

You support Windows 10 Enterprise desktop computers and tablets. All of the computers are able to connect to your company network from the Internet by using DirectAccess.

Your company wants to deploy a new application to the tablets. The deployment solution must meet the following requirements:

- The application is stored locally on the tablets.
- Access to the applications is protected with extra logon credentials, in addition to a standard domain account used by users. ▪
- The application utilizes the least amount of network bandwidth.
- The application must maintain access to the current desktop.

You need to deploy the new application to the tablets.

What should you do?

- A. Deploy the application as an Application Virtualization (App-V) package. Install the App-V 4.6 client on the tablets.
- B. Deploy the application as a published application on the Remote Desktop server. Create a Remote Desktop connection on the tablets.
- C. Install the application on a local drive on the tablets.
- D. Install the application in a Windows To Go workspace.
- E. Install Hyper-V on tablets. Install the application on a virtual machine.
- F. Publish the application to Windows Store.

- G. Install the application within a separate Windows 10 Enterprise installation in a virtual hard disk (VHD) file. Configure the tablets with dual boot.
- H. Install the application within a separate Windows 10 Enterprise installation in a VHDX file. Configure tablets with dual boot.

**Correct Answer:** A

**Section:** Manage Remote Access

**Explanation**

**Explanation/Reference:**

#### QUESTION 151

**Note:** This question is part of a series of questions that use the same or similar answer choices. An answer choice may be correct for more than one question in the series. Each question is independent of the other questions in this series. Information and details provided in a question apply only to that question.

You support Windows 10 Enterprise desktop computers and tablets. All of the computers are able to connect to your company network from the Internet by using DirectAccess.

Your company wants to deploy a new application to the tablets. The deployment solution must meet the following requirements:

- Users have offline access to the application only within the first seven days following their latest online session. ▪
- The application uses the least amount of disk space.

You need to deploy the new application to the tablets.

What should you do?

- A. Deploy the application as an Application Virtualization (App-V) package. Install the App-V 4.6 client on the tablets.
- B. Deploy the application as a published application on the Remote Desktop server. Create a Remote Desktop connection on the tablets.
- C. Install the application on a local drive on the tablets.
- D. Install the application in a Windows To Go workspace.
- E. Install Hyper-V on tablets. Install the application on a virtual machine.
- F. Publish the application to Windows Store.
- G. Install the application within a separate Windows 10 Enterprise installation in a virtual hard disk (VHD) file. Configure the tablets with dual boot.
- H. Install the application within a separate Windows 10 Enterprise installation in a VHDX file. Configure tablets with dual boot.

**Correct Answer:** F

**Section:** Manage Remote Access

**Explanation**

**Explanation/Reference:**

**QUESTION 152**

**Note:** This question is part of a series of questions that use the same or similar answer choices. An answer choice may be correct for more than one question in the series. Each question is independent of the other questions in this series. Information and details provided in a question apply only to that question.

You support Windows 10 Enterprise desktop computers and tablets. All of the computers are able to connect to your company network from the Internet by using DirectAccess.

Your company wants to deploy a new application to the tablets. The deployment solution must meet the following requirements:

- The application is not accessible if a user is working offline.
- The application is isolated from other applications.
- The application uses the least amount of disk space.

You need to deploy the new application to the tablets.

What should you do?

- A. Deploy the application as an Application Virtualization (App-V) package. Install the App-V 4.6 client on the tablets.
- B. Deploy the application as a published application on the Remote Desktop server. Create a Remote Desktop connection on the tablets.
- C. Install the application on a local drive on the tablets.
- D. Install the application in a Windows To Go workspace.
- E. Install Hyper-V on tablets. Install the application on a virtual machine.
- F. Publish the application to Windows Store.
- G. Install the application within a separate Windows 10 Enterprise installation in a virtual hard disk (VHD) file. Configure the tablets with dual boot.
- H. Install the application within a separate Windows 10 Enterprise installation in a VHDX file. Configure tablets with dual boot.

**Correct Answer:** B

**Section:** Manage Remote Access

**Explanation**

**Explanation/Reference:**

**QUESTION 153**

You have Windows 10 Enterprise desktop computer and a Windows 10 Enterprise laptop computer.

You connect from the desktop to the laptop by using Remote Desktop. You are unable to copy any files between the desktop and the laptop during the Remote Desktop session.

You need to ensure that you can copy files between the computers during the Remote Desktop session.

What should you do?

- A. On the desktop, add the laptop to the trusted hosts in Windows Remote Management (WinRM).
- B. On the laptop, open Remote Desktop Connection and configure the Local devices and resources settings.
- C. On the desktop, open Remote Desktop Connection and configure the Local devices and resources settings.
- D. On the laptop, add the desktop to the trusted hosts in Windows Remote Management (WinRM).

**Correct Answer:** C

**Section:** Manage Remote Access

**Explanation**

**Explanation/Reference:**

References: <https://www.technipages.com/unable-to-copy-and-paste-to-remote-desktop-session>

#### QUESTION 154

You provide IT support for a small business.

A member of the team needs the ability to use Remote Desktop and VPN to access a desktop computer from a laptop when traveling. This desktop computer is running Windows 10 Enterprise, while the laptop is running Windows 8.

You need to set up a secure Remote Desktop connection on the desktop computer.

Which two actions should you perform? Each correct answer presents part of the solution.

**NOTE:** Each correct selection is worth one point.

- A. Make the user account a standard user.
- B. Allow remote connections.
- C. Require Network Level Authentication.
- D. Disable Remote Assistance connections.

**Correct Answer:** BC

**Section:** Manage Remote Access

**Explanation**

**Explanation/Reference:**

References: <https://docs.microsoft.com/en-us/windows-server/remote/remote-desktop-services/clients/remote-desktop-allow-access>

#### QUESTION 155

You administer Windows 10 Enterprise computers in your company network.

The computers are configured to allow remote connections.

You attempt to create a Remote Desktop Connection to a computer named Computer1.

You receive the following message:

"Remote Desktop can't connect to the remote computer."

You are able to ping Computer1.

You discover that Remote Desktop Firewall rules are not present on Computer1.

You need to connect to Computer1 by using Remote Desktop.

Which PowerShell commands should you run on Computer1?

- A. **Set-NetFirewallRule -Name RemoteSvcAdmin-in-TCP -Enable True**
- B. **Set -NetFirewallRule -Name RemoteFwAdmin-In-TCP -Enable True**
- C. **New-NetFirewallRule -DisplayName RdpTCPIn -localPort 3389 - Protocol TCP**
- D. **New-NetFirewallRule -DisplayName RdpTCPout -localPort 3389 - Protocol TCP  
-Direction Out -Action Allow**

**Correct Answer: C**

**Section: Manage Remote Access**

**Explanation**

**Explanation/Reference:**

Explanation:

New-NetFirewallRule

Creates a new inbound or outbound firewall rule and adds the rule to the target computer.

Syntax

New-NetFirewallRule -DisplayName <String> [-Action <Action>] [-AsJob] [-Authentication <Authentication>] [- CimSession <CimSession[]>] [-Description <String>] [-Direction <Direction>] [-DynamicTarget <DynamicTransport>] [-EdgeTraversalPolicy <EdgeTraversal>] [-Enabled <Enabled>] [-Encryption <Encryption>] [-GPOSession <String>] [-Group <String>] [-IcmpType <String[]>] [-InterfaceAlias <WildcardPattern[]>] [-InterfaceType <InterfaceType>] [-LocalAddress <String[]>] [-LocalOnlyMapping <Boolean>] [-LocalPort <String[]>] [-LocalUser<String>] [-LooseSourceMapping <Boolean>] [-Name <String>] [-OverrideBlockRules<Boolean>] [-Owner <String>] [- Package <String>] [-Platform <String[]>] [-PolicyStore<String>] [-Profile <Profile>] [-Program <String>] [-Protocol <String>] [-RemoteAddress<String[]>] [- RemoteMachine <String>] [-RemotePort <String []>] [-RemoteUser <String>] [-Service <String>] [- ThrottleLimit <Int32>] [-Confirm] [-WhatIf] [ <CommonParameters>] TheNew-NetFirewallRule cmdlet creates an inbound or outbound firewall rule and adds the rule to the target computer.

[http://en.wikipedia.org/wiki/Remote\\_Desktop\\_Protocol](http://en.wikipedia.org/wiki/Remote_Desktop_Protocol)

Remote Desktop Protocol

By default, the server listens on TCP port 3389 and UDP port 3389.

References:

[www.vceplus.com](http://www.vceplus.com) - VCE Exam Simulator - Download A+ VCE (latest) free Open VCE Exams - VCE to PDF Converter - PDF Online

<https://docs.microsoft.com/en-us/powershell/module/netsecurity/new-netfirewallrule?view=winserver2012r2-ps>

#### QUESTION 156

A company has Windows 10 Enterprise client computers that use DirectAccess.

You need to ensure that the client computers can communicate to IPv4 resources by name.

What should you implement on the client computers?

- A. AAA (Quad A) resource records
- B. Teredo tunnels
- C. NAT64/DNS64
- D. Teredo relays
- E. Intra-Site Automatic Tunnel Addressing Protocol (ISATAP)

**Correct Answer: C**

**Section: Manage Remote Access**

**Explanation**

**Explanation/Reference:**

References: [https://msdn.microsoft.com/en-us/library/windows/desktop/aa965905\(v=vs.85\).aspx](https://msdn.microsoft.com/en-us/library/windows/desktop/aa965905(v=vs.85).aspx)



#### QUESTION 157

**Note: This question is part of a series of questions that use the same or similar answer choices. An answer choice may be correct for more than one question in the series. Each question is independent of the other questions in this series. Information and details provided in a question apply only to that question.**

You support Windows 10 Enterprise desktop computers and tablets. All of the computers are able to connect to your company network from the Internet by using DirectAccess.

Your company wants to deploy a new application to the tablets. The deployment solution must meet the following requirements:

- The application is not accessible if a user is working offline
- The application is stored on an internal solid-state drive (SSD) on the tablets
- The application is isolated from other applications
- The application uses the least amount of disk space

You need to deploy the new application to the tablets.

What should you do?

- A. Deploy the application as an Application Virtualization (App-V) package. Install the App-V 4.6 client on the tablets.

- B. Deploy the application as a published application on the Remote Desktop server. Create a Remote Desktop connection on the tablets.
- C. Install the application on a local drive on the tablets.
- D. Install the application in a Windows To Go workspace.
- E. Install Hyper-V on tablets. Install the application on a virtual machine.
- F. Publish the application to Windows Store.
- G. Install the application within a separate Windows 10 Enterprise installation in a virtual hard disk (VHD) file. Configure the tablets with dual boot.
- H. Install the application within a separate Windows 10 Enterprise installation in a VHDX file. Configure tablets with dual boot.

**Correct Answer: B**

**Section: Manage Remote Access**

**Explanation**

**Explanation/Reference:**

#### **QUESTION 158**

A laptop runs Windows 10 Enterprise. You connect the laptop to a corporate network by using a VPN connection.

The company policy requires all company computers to be restricted from the Internet access while connected to the corporate network.

You need to configure this laptop to ensure that it cannot access the Internet when its VPN connection to the corporate network is active.

What should you do?

- A. Configure the VPN connection to use only PPTP
- B. In the TCP/IPv4 properties of the VPN connection, enable the **Use default gateway on remote network** setting
- C. In the TCP/IPv4 properties of the VPN connection, disable the **Use default gateway on remote network** setting
- D. Configure the VPN connection to use only L2TP/IPSec

**Correct Answer: C**

**Section: Manage Remote Access**

**Explanation**

**Explanation/Reference:**

References: <https://www.nextofwindows.com/how-to-use-local-internet-connection-to-access-internet-while-still-connected-with-vpn>

#### **QUESTION 159**

##### **HOTSPOT**

You install Windows 10 Enterprise on new laptops that will be shipped to remote users in the sales department of your company. You create new VPN connections on the laptops.

Your company security policy requires that the maximum allowed network outage time for the VPN connection should be less than 10 minutes.



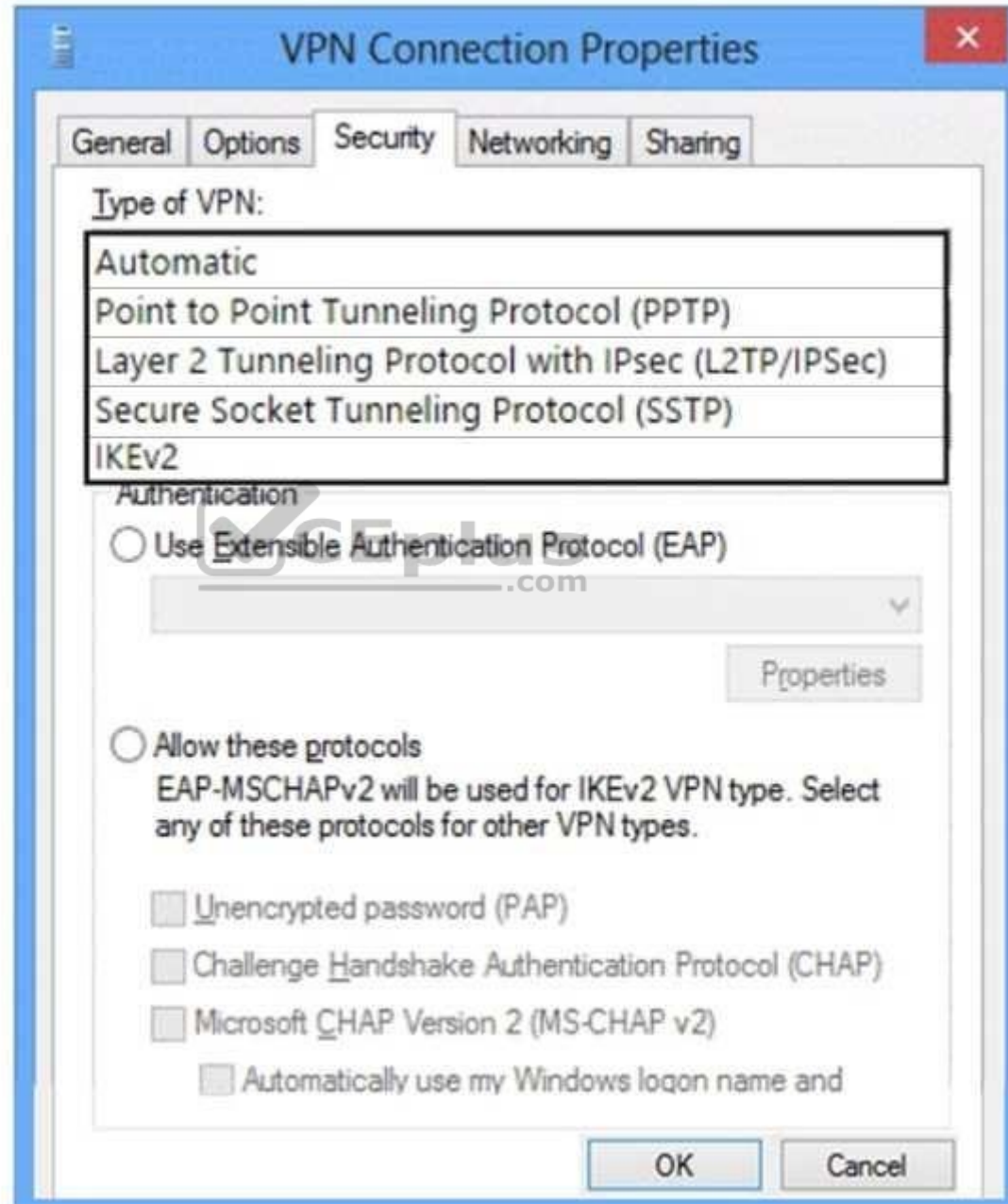
You need to enable automatic reconnection for the VPN.

Which protocol should you use? To answer, configure the appropriate option or options in the answer area.

**Hot Area:**



## Answer Area



The screenshot shows the 'VPN Connection Properties' dialog box with the 'Security' tab selected. The 'Type of VPN' list has 'Automatic' selected. Under the 'Authentication' section, the radio button for 'Use Extensible Authentication Protocol (EAP)' is selected. Below this, there is a dropdown menu and a 'Properties' button. The radio button for 'Allow these protocols' is unselected. Under this section, there are four checkboxes: 'Unencrypted password (PAP)', 'Challenge Handshake Authentication Protocol (CHAP)', 'Microsoft CHAP Version 2 (MS-CHAP v2)', and 'Automatically use my Windows logon name and'. The 'OK' and 'Cancel' buttons are at the bottom right.

**VPN Connection Properties**

General Options **Security** Networking Sharing

Type of VPN:

- Automatic
- Point to Point Tunneling Protocol (PPTP)
- Layer 2 Tunneling Protocol with IPsec (L2TP/IPSec)
- Secure Socket Tunneling Protocol (SSTP)
- IKEv2

Authentication

☒ Use Extensible Authentication Protocol (EAP)

☐ Allow these protocols  
EAP-MSCHAPv2 will be used for IKEv2 VPN type. Select any of these protocols for other VPN types.

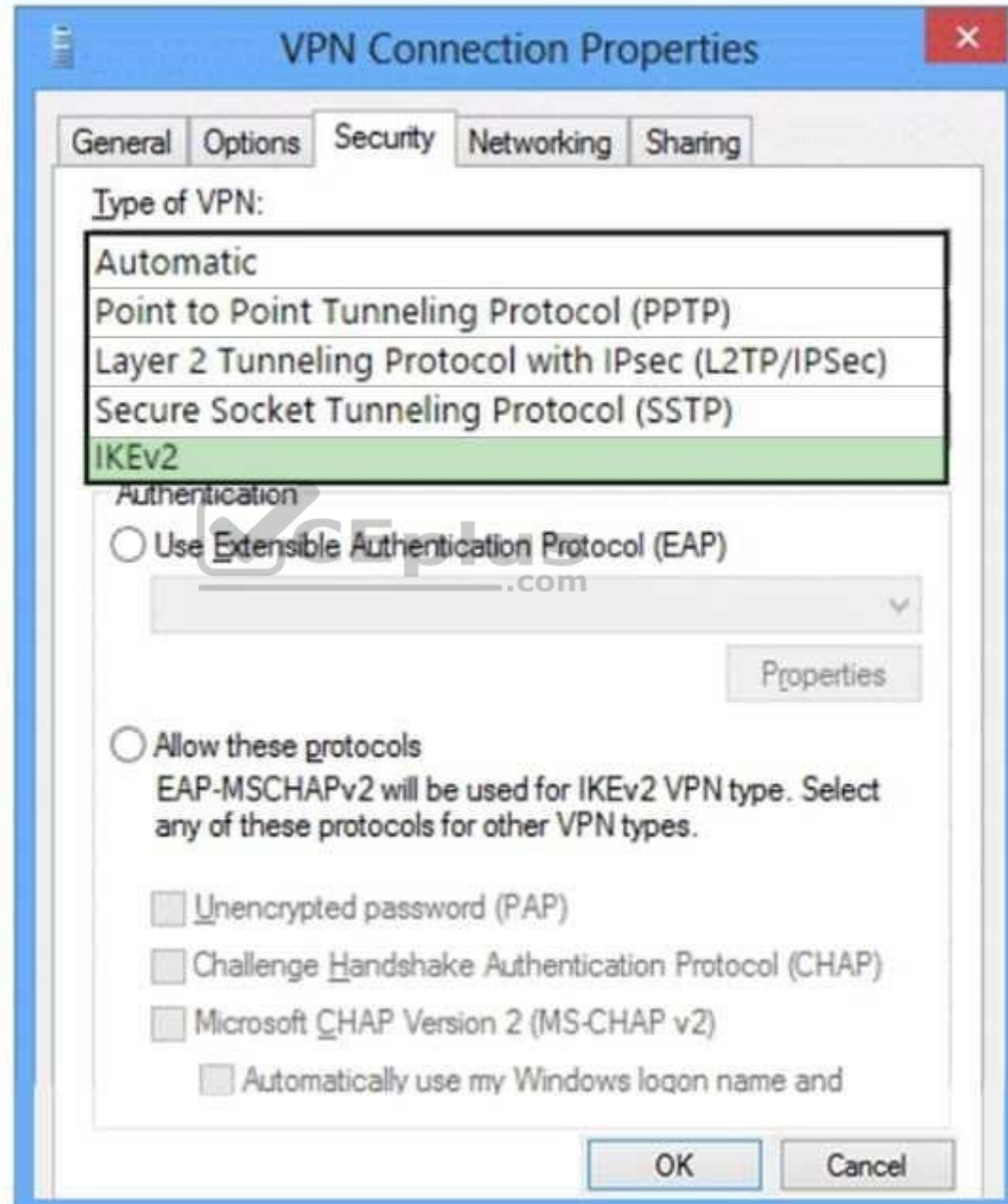
- ☐ Unencrypted password (PAP)
- ☐ Challenge Handshake Authentication Protocol (CHAP)
- ☐ Microsoft CHAP Version 2 (MS-CHAP v2)
- ☐ Automatically use my Windows logon name and

OK Cancel

**Correct Answer:**



## Answer Area



The image shows a Windows XP-style dialog box titled "VPN Connection Properties". It has five tabs: "General", "Options", "Security", "Networking", and "Sharing". The "Security" tab is selected. Under the heading "Type of VPN:", there is a list box containing five options: "Automatic", "Point to Point Tunneling Protocol (PPTP)", "Layer 2 Tunneling Protocol with IPsec (L2TP/IPSec)", "Secure Socket Tunneling Protocol (SSTP)", and "IKEv2". The "IKEv2" option is highlighted with a green background. Below the list box, the "Authentication" section has two radio buttons. The first is "Use Extensible Authentication Protocol (EAP)", which is selected. Below it is a dropdown menu with a downward arrow. To the right of the dropdown is a "Properties" button. The second radio button is "Allow these protocols", which is unselected. Below it is a text box that says "EAP-MSCHAPv2 will be used for IKEv2 VPN type. Select any of these protocols for other VPN types." Below this text box are four checkboxes: "Unencrypted password (PAP)", "Challenge Handshake Authentication Protocol (CHAP)", "Microsoft CHAP Version 2 (MS-CHAP v2)", and "Automatically use my Windows logon name and". The "OK" and "Cancel" buttons are at the bottom right.

VPN Connection Properties

General Options Security Networking Sharing

Type of VPN:

- Automatic
- Point to Point Tunneling Protocol (PPTP)
- Layer 2 Tunneling Protocol with IPsec (L2TP/IPSec)
- Secure Socket Tunneling Protocol (SSTP)
- IKEv2**

Authentication

☒ Use Extensible Authentication Protocol (EAP)

☐ Allow these protocols

EAP-MSCHAPv2 will be used for IKEv2 VPN type. Select any of these protocols for other VPN types.

☐ Unencrypted password (PAP)

☐ Challenge Handshake Authentication Protocol (CHAP)

☐ Microsoft CHAP Version 2 (MS-CHAP v2)

☐ Automatically use my Windows logon name and

Properties

OK Cancel

**Section: Manage Remote Access****Explanation****Explanation/Reference:**

References: [https://docs.microsoft.com/en-us/previous-versions/windows/it-pro/windows-server-2008-R2-and-2008/dd637811\(v%3dws.10\)](https://docs.microsoft.com/en-us/previous-versions/windows/it-pro/windows-server-2008-R2-and-2008/dd637811(v%3dws.10))

**QUESTION 160**

A company has Windows 10 Enterprise client computers. Client computers are connected to a corporate private network. You deploy a Remote Desktop Gateway, DirectAccess, and a VPN server at the corporate main office.

Users are currently unable to connect from their home computers to their work computers by using Remote Desktop.

You need to ensure that users can remotely connect to their office computers by using Remote Desktop. Users must not be able to access any other corporate network resource by using the local Windows installation from their home computers.

Which setting should you configure on the home computers?

- A. Remote Desktop Gateway IP address
- B. Remote Desktop local resources
- C. Virtual Private Network connection
- D. DirectAccess connection



**Correct Answer: A**

**Section: Manage Remote Access****Explanation****Explanation/Reference:**

Explanation:

The solution is to deploy Remote Desktop Gateway in the office. Remote users can then connect to their computers on the office network by using Remote Desktop client on their home computers configured with the IP address of the Remote Desktop Gateway. Remote Desktop Gateway (RD Gateway) is a role service that enables authorized remote users to connect to resources on an internal corporate or private network, from any Internet-connected device that can run the Remote

Desktop Connection (RDC) client. The network resources can be Remote Desktop Session Host (RD Session Host) servers, RD Session Host servers running RemoteApp programs, or computers with Remote Desktop enabled. RD Gateway uses the Remote Desktop Protocol (RDP) over HTTPS to establish a secure, encrypted connection between remote users on the Internet and the internal network resources on which their productivity applications run. RD Gateway provides a comprehensive security configuration model that enables you to control access to specific internal network resources. RD Gateway provides a point-to-point RDP connection, rather than allowing remote users access to all internal network resources.

Incorrect Answers:

B: Remote Desktop local resources determine which local resources (printers, drives etc.) are available in a Remote Desktop connection. However, this solution makes no provision for actually connecting to the office network.

C: Virtual Private Network connections would enable remote access to the office network but this solution would not prevent users accessing other corporate network resources.

D: DirectAccess connections would enable remote access to the office network but this solution would not prevent users accessing other corporate network resources.

References: <https://technet.microsoft.com/enb/library/cc731150.aspx>

#### QUESTION 161

**Note: This question is part of a series of questions that present the same scenario. Each question in the series contains a unique solution that might meet the stated goals. Some question sets might have more than one correct solution, while others might not have a correct solution.**

**After you answer a question in this section, you will NOT be able to return to it. As a result, these questions will not appear in the review screen.**

You manage a corporate network. All servers run Windows Server 2016. All servers and client devices are joined to an Active Directory Domain Services (AD DS) domain named adatum.com. The use of VPN servers on the network is strictly prohibited.

Users must be able to access the corporate network in addition to Work Folders when they work at home on Windows 10 devices. You install, configure, and publish the certificate revocation list (CRL) for an internal Active Directory Certificate Services (AD CS) server.

You need to configure the environment to allow your users to register devices.

Solution: You deploy an Active Directory Federation Services (AD FS) server and a Web Application Proxy server. You create a DNS A record of remote.adatum.com and point the DNS record to your Web Application Proxy server.

Does the solution meet the goal?

- A. Yes
- B. No

**Correct Answer: B**

**Section: Manage Remote Access**

**Explanation**

**Explanation/Reference:**

References:

<https://blog.nextxpert.com/2013/11/27/publishing-work-folders-with-web-application-proxy-2/>

#### QUESTION 162

You are a system administrator for a department that has Windows 10 Enterprise computers in a domain configuration.

You deploy an application to all computers in the domain.

You need to use group policy to restrict certain groups from running the application.

What should you do?



<https://vceplus.com/>

- A. Set up DirectAccess.
- B. Configure AppLocker.
- C. Disable BitLocker.
- D. Run the User State Management Tool.

**Correct Answer: B**

**Section: Manage Apps**

**Explanation**



**Explanation/Reference:**

Explanation:

AppLocker is a feature in Windows Server 2012, Windows Server 2008 R2, Windows 8, and Windows 7 that advances the functionality of the Software Restriction Policies feature. AppLocker contains new capabilities and extensions that reduce administrative overhead and help administrators control how users can access and use files, such as executable files, scripts, Windows Installer files, and DLLs.

AppLocker rules can be applied to security groups. We can use a group policy to apply AppLocker rules to the security groups to prevent them from running the application.

References:

[https://technet.microsoft.com/en-us/library/ee619725\(v=ws.10\).aspx#BKMK\\_WhatRuleConditions](https://technet.microsoft.com/en-us/library/ee619725(v=ws.10).aspx#BKMK_WhatRuleConditions)

### QUESTION 163

You have a computer named Computer1 that runs Windows 10 Enterprise. Computer1 is a member of an Active Directory domain named contoso.com.

You have a line-of-business universal app named App1. App1 is developed internally.

You need to ensure that you can run App1 on Computer1. The solution must meet the following requirements: ▪

Minimize costs to deploy the app.

- Minimize the attack surface on Computer1.

What should you do?

- A. Have App1 certified by the Windows Store.
- B. Sign App1 with a certificate issued by a third-party certificate authority.
- C. From the Update & Security setting on Computer1, enable the **Sideload apps** setting.
- D. Run the **Add-AppxProvisionedPackage** cmdlet.

**Correct Answer:** C

**Section:** Manage Apps

**Explanation**

**Explanation/Reference:**

Explanation:

To install the application, you need to 'Sideload' it. First you need to enable the Sideload apps setting.

LOB Windows Store apps that are not signed by the Windows Store can be sideloaded or added to a PC in the enterprise through scripts at runtime on a per-user basis. They can also be provisioned in an image by the enterprise so that the app is registered to each new user profile that's created on the PC. The requirements to sideload the app per-user or in the image are the same, but the Windows PowerShell cmdlets you use to add, get, and remove the apps are different.

Before you can sideload LOB Windows Store apps that are not signed by the Windows Store, you will need to configure the PC.

References:

<https://msdn.microsoft.com/en-us/library/hh454036.aspx>



#### **QUESTION 164**

Your network contains an Active Directory domain and 100 Windows 10 client computers. All software is deployed by using Microsoft Application Virtualization (AppV) 5.0.

Users are NOT configured as local administrators.

Your company purchases a subscription to Microsoft Office 365 that includes Office 365 ProPlus.

You need to create an App-V package for Office 365 ProPlus.

What should you do?

- A. Run the Office Customization Tool (OCT), run the **App-V Sequencer** and then run **Setup /Packager**.
- B. Download the Office Deployment Tool for Click-to-Run, run the **App-V Sequencer** and then run **Setup /Admin**.
- C. Download the Office Deployment Tool for Click-to-Run, run **Setup /Download** and then run **Setup /Packager**.
- D. Run the Office Customization Tool (OCT), run **Setup /Download** and then run the **App-V Sequencer**.

**Correct Answer:** C

**Section:** Manage Apps

**Explanation**



**Explanation/Reference:**

Explanation:

The Office Deployment Tool allows the administrator to customize and manage Office 2013 Volume License or Office 365 Click-to-Run deployments.

The Office Deployment Tool Setup runs the following tasks:

Setup /Download – Downloads files to create an Office 15 installation

Setup /Configure – Adds, removes, or configures an Office 15 installation

Setup /Packager – Produces an Office 15 App-V package

References:

<http://blogs.technet.com/b/pauljones/archive/2013/08/28/office-2013-click-to-run-with-configuration-manager-2012.aspx>

<http://technet.microsoft.com/en-us/library/cc179097%28v=office.15%29.aspx>

**QUESTION 165**

You support computers that run Windows XP Professional SP3 and Windows 10 Enterprise.

You discover that one of the applications used by the logistics department does not run on Windows 10 Enterprise computers.

You need to run the application on Windows 10 Enterprise computers.

What should you do first?

- A. Install the Application Virtualization (App-V) client on all Windows XP computers in the logistics department.
- B. Create a Windows To Go workspace for all users in the logistics department.
- C. Run Refresh your PC on all Windows 10 Enterprise computers in the logistics department.
- D. Install Client Hyper-V on all Windows 10 Enterprise computers in the logistics department.

**Correct Answer: D**

**Section: Manage Apps**

**Explanation**

**Explanation/Reference:**

**QUESTION 166**

You plan to deploy a Microsoft Azure Remote App collection by using a custom template image. The image will contain Microsoft Office 365 apps. The image will be used to deploy a collection that will be accessed by 50 users.

You need to identify licensing requirements for the deployment.

Which two requirements should you identify? Each correct answer presents part of the solution.

- A. An activated Office 365 ProPlus installation

- B. Windows client access licenses (CALs) assigned to the users
- C. Office 365 ProPlus licenses assigned to the users
- D. Remote Desktop client access licenses (CALs) assigned to the users
- E. Office 365 Enterprise E3 service plan

**Correct Answer:** AC

**Section:** Manage Apps

**Explanation**

**Explanation/Reference:**

References: <https://docs.microsoft.com/en-us/azure/remotapp/remotapp-licensing>

#### **QUESTION 167**

You support Windows 10 Enterprise tablets. The tablets have the Application Virtualization (App-V) client installed.

Company policy requires that all published App-V applications be available to users only when they are connected to the company network.

You need to configure the tablets so that the company policy requirements are enforced.

What should you do?

- A. Configure mandatory profiles for tablet users.
- B. Reset the App-V client FileSystem cache on the tablets.
- C. Disable the Disconnected operation mode on the tablets.
- D. Change user permissions to the App-V applications.

**Correct Answer:** C

**Section:** Manage Apps

**Explanation**

**Explanation/Reference:**

#### **QUESTION 168**

You have Windows 10 Enterprise client computers. The computers use Microsoft Application Virtualization (App-V) to deploy apps.

You discover that when users sign in to their computer, the App-V client refreshes all of the published packages.

You need to prevent the App-V client from refreshing the published packages at sign-in. The solution must ensure that the users can use App-V applications.

Which Windows PowerShell cmdlet should you run?

- A. **Set-AppvClientPackage**

- B. **Set-AppvClientConfiguration**
- C. **Set-AppvPublishingServer**
- D. **Set-AppvClientMode**

**Correct Answer:** C

**Section:** Manage Apps

**Explanation**

**Explanation/Reference:**

References:

<https://docs.microsoft.com/en-us/powershell/module/appvclient/set-appvpublishingserver?view=win10-ps>

#### **QUESTION 169**

A company installs a line-of-business (LOB) app on a server that runs Remote Desktop Services.

You need to ensure that you can publish the application by using RemoteApp.

What should you do first?

- A. Create a personal desktop session collection.
- B. Manually assign users to a session host.
- C. Create a pooled desktop collection.
- D. Automatically assign users to a session host.



**Correct Answer:** C

**Section:** Manage Apps

**Explanation**

**Explanation/Reference:**

References:

<https://docs.microsoft.com/en-us/windows-server/remote/remote-desktop-services/rds-create-collection#create-a-pooled-desktop-session-collection>

#### **QUESTION 170**

A company has Windows 10 Enterprise client computers.

You install a new printer on a client computer. The printer software installation includes an application that runs when the computer starts. You experience problems with the application.

You need to prevent the application from running when the computer starts, without affecting any other application.

What should you do?

- A. Configure the printer application by using Task Manager
- B. Run the **bcdedit -p** command
- C. Run the **msconfig -p** command
- D. Configure the printer by using Device Manager

**Correct Answer:** A

**Section:** Manage Apps

**Explanation**

**Explanation/Reference:**

References: <https://support.microsoft.com/en-za/help/4026268/windows-change-startup-apps-in-windows-10>

#### QUESTION 171

**Note:** This question is part of a series of questions that present the same or similar answer choices. An answer choice may be correct for more than one question in the series. Each question is independent of the other questions in this series. Information and details provided in a question apply only to that question.

You support Windows 10 Enterprise desktop computers and tablets. All of the computers are able to connect to your company network from the Internet by using DirectAccess.

Your company wants to deploy a new application. The deployment solution must meet the following requirements:

- The application does not utilize the company server infrastructure.
  - The application is isolated from other applications.
  - The application uses the least amount of disk space possible on a solid-state drive (SSD) on the tablets. ▪
- The application utilizes the least amount of network bandwidth.

You need to deploy the new application and ensure that it can run on the tablets.

What should you do?

- A. Deploy the application as an Application Virtualization (App-V) package. Install the App-V 4.6 client on the tablets.
- B. Deploy the application as a published application on the Remote Desktop server. Create a Remote Desktop connection on the tablets.
- C. Install the application on a local drive on the tablets.
- D. Install the application in a Windows To Go workspace.
- E. Install Hyper-V on tablets. Install the application on a virtual machine.
- F. Publish the application within a separate Windows 10 Enterprise installation in a virtual hard disk (VHD) file. Configure the tablets with dual boot.
- G. Install the application within a separate Windows 10 Enterprise installation in a VHDX file. Configure tablets with dual boot.

**Correct Answer:** B

**Section:** Manage Apps

**Explanation**

[www.vceplus.com](http://www.vceplus.com) - VCE Exam Simulator - Download A+ VCE (latest) free Open VCE Exams - VCE to PDF Converter - PDF Online

**Explanation/Reference:**

**QUESTION 172**

You support Windows 10 Enterprise computers. You publish an App-V application named App1.

A laptop user reports that App1 runs when their laptop is connected to the company network. App1 does not run when the user is disconnected from the company network.

You need to ensure that App1 runs on the laptop when it is disconnected from the company network.

What should you do?

- A. Change the user profile to **Roaming**.
- B. Change the **AutoLoadTriggers** registry key settings.
- C. Change the **AutoLoadTarget** registry key settings.
- D. Change the user profile to **Mandatory**.

**Correct Answer: A**

**Section: Manage Apps**

**Explanation**



**Explanation/Reference:**

**QUESTION 173**

You support Windows 10 Enterprise computers that are members of an Active Directory domain. Your company policy defines the list of approved Microsoft Store for Business apps that are allowed for download and installation.

You have created a new AppLocker Packaged Apps policy to help enforce the company policy.

You need to test the new AppLocker Packaged Apps policy before you implement it for the entire company.

What should you do?

- A. From Group Policy, run the Group Policy Results Wizard
- B. From Group Policy, enforce the new AppLocker policy in Audit Only mode
- C. From Group Policy, run the Group Policy Modeling Wizard
- D. From PowerShell, run the **Get-AppLockerPolicy -Effective** command to retrieve the AppLocker effective policy

**Correct Answer: B**

**Section: Manage Apps**

**Explanation**

**Explanation/Reference:**

Explanation:

You can test an AppLocker Packaged Apps policy by running it in audit mode.

**QUESTION 174**

You use a Windows 10 Enterprise laptop. You want to back up the Pictures library. You need to configure a backup strategy that backup the Pictures library to a network drive every day.

Additionally, you need to be able to recover a copy of any files from the library that have been changed with the last month.

What should you do?

- A. Configure computer restore points.
- B. Configure File History
- C. Create a Storage Pool.
- D. Create a system image.

**Correct Answer: B**

**Section: Manage Updates and Recovery**

**Explanation**

**Explanation/Reference:**

References:

<https://support.microsoft.com/en-za/help/17128/windows-8-file-history>

**QUESTION 175**

You have a computer named Computer1 that runs Windows 10 Enterprise.

You plan to install the most recent updates to Computer1.

You need to ensure that you can revert to the current state of Computer1 in the event that the computer becomes unresponsive after the update.

What should you include in your solution?

- A. The **Reset this PC** option from the Recovery section of the Settings app
- B. The **Sync your settings** options from the Accounts section of the Settings app
- C. The Backup and Restore (Windows 7) control panel item
- D. The **Refresh your PC** option from the PC Settings
- E. A volume snapshot by using the fsutil.exe command with the volume parameter
- F. The **Restore personal files** option from the File History control panel item

**Correct Answer: C**

**Section: Manage Updates and Recovery**

**Explanation**

**Explanation/Reference:**

Explanation:

The question states that you need to ensure that you can revert to the current state of Computer1. The question does not specify what exactly the current state is in terms of software configuration but it would be safe to assume that Computer1 has Windows Store Apps installed, desktop applications installed and some previous Windows Updates installed.

The only way to recover the computer to its 'current' state is to perform a full backup of the computer before updating it. Then if the computer becomes unresponsive after the update, we can simply restore the backup to return the computer to its state at the time of the backup.

Incorrect Answers:

A: When you Reset your PC, all your applications and data will be removed. It is like doing a complete Windows reinstall and formatting your hard drive.

B: The Sync your settings options are used for syncing settings with a Microsoft account. This does not return the computer to its current state.

D: When you Refresh your PC, your data, Windows Store Apps and application settings will be preserved. However, all your desktops applications and any existing Windows Updates will be removed. This does not return the computer to its current state.

References:

<http://www.howtogeek.com/220986/how-to-use-all-of-windows-10%E2%80%99s-backup-and-recovery-tools/>

#### **QUESTION 176**

You administer a Windows 10 Enterprise computer. The computer has File History turned on, and system protection turned on for drive C.

You accidentally delete a folder named Libraries\Customers by using the Shift+Delete keyboard shortcut.

You need to restore the most recent version of the folder to its original location.

Which approach should you use to restore the folder?

- A. Recycle Bin
- B. the latest restore point
- C. File History
- D. a manually selected restore point

**Correct Answer: C**

**Section: Manage Updates and Recovery**

**Explanation**

**Explanation/Reference:**

Explanation:

File History is similar to Previous Versions in previous versions of Windows. It takes regular backups of your data and saves them to a separate disk volume or external drive. When File History is enabled, it backs up all the system libraries and your custom libraries by default. To restore a deleted folder, you can browse to the parent folder or library and select Restore Previous Versions. The Previous Versions tab will list the previous versions that can be restored to its original location or restored to an alternative location.

References:

<https://www.winhelp.us/file-history-in-windows-8.html>

#### QUESTION 177

You have a computer named Computer1 that runs Windows 10 Enterprise. Computer1 is configured to receive Windows updates from the Internet.

If a user is logged on to Computer1, you need to prevent Computer1 from automatically restarting without the logged on user's consent after the installation of the Windows updates.

What should you do?

- A. Enable the **Defer upgrades** setting.
- B. Edit the **Automatic App Update** scheduled task.
- C. Configure the **Choose how updates are delivered** setting.
- D. Configure the **Choose how updates are installed** setting.



**Correct Answer:** D

**Section:** Manage Updates and Recovery

**Explanation**

**Explanation/Reference:**

Explanation:

In the Choose how updates are installed setting, you can use the drop-down menu to choose an option: ▪

Schedule a restart

- Automatically restart

The Schedule a restart option will allow the user to choose when the computer is restarted. Of the answers given, this is the only way to prevent Computer1 from automatically restarting without the logged on user's consent after the installation of the Windows updates.

References:

<http://windows.microsoft.com/en-gb/windows-10/getstarted-choose-how-updates-are-installed>

#### QUESTION 178

You have a computer named Computer1 that runs Windows 10 Enterprise. You install a Universal app named App1 on Computer1.

You discover that an update for App1 is available.



You need to install the update as soon as possible.

What should you do?

- A. Log off and log on to the Computer1.
- B. From the Windows Update settings, modify the **Choose how updates are delivered** setting.
- C. From the Windows Update settings, modify the **Choose how updates are installed** setting.
- D. From the Windows Update settings, click **Check for updates**.

**Correct Answer:** C

**Section:** Manage Updates and Recovery

**Explanation**

**Explanation/Reference:**

References: <http://www.howtogeek.com/223068/what-you-need-to-know-about-windows-update-on-windows-10/>

#### QUESTION 179

You have a standalone Windows 10 Enterprise computer that has a single hard drive installed and configured.

You need to identify which storage devices can have content backed up by using File History.

What should you identify?

- A. A writable Blu-ray disc
- B. A writable DVD disc
- C. An internal drive that is formatted NTFS
- D. A SD card that is formatted FAT32

**Correct Answer:** D

**Section:** Manage Updates and Recovery

**Explanation**

**Explanation/Reference:**

References:

<http://www.laptopmag.com/articles/back-files-file-history-windows-10>

#### QUESTION 180

You have a computer named Computer1 that runs Windows 10 Enterprise.

You plan to install the most recent updates to Computer1.

You need to ensure that you can revert to the current state of Computer1 in the event that the computer becomes unresponsive after the update.

What should you include in your solution?

- A. The **Reset this PC** option from the Recovery section of the Settings app
- B. The **Refresh your PC** option from the PC Settings
- C. A volume snapshot by using the `fsutil.exe` command with the `volume` parameter
- D. System protection for the local disks.
- E. The **Go back to an earlier build** option from the Recovery section of the Settings app

**Correct Answer:** D

**Section:** Manage Updates and Recovery

**Explanation**

**Explanation/Reference:**

References: <https://www.thewindowsclub.com/system-restore-disabled-turn-on-system-restore-windows>



<https://vceplus.com/>