

70-697.exam.173q

Number: 70-697
Passing Score: 800
Time Limit: 120 min



Website: <https://vceplus.com>
VCE to PDF Converter: <https://vceplus.com/vce-to-pdf/>
Facebook: <https://www.facebook.com/VCE.For.All.VN/>
Twitter : https://twitter.com/VCE_Plus

<https://vceplus.com/>

70-697

Configuring Windows Devices

Sections

1. Manage Identity
2. Plan Desktop and Device Deployment
3. Plan and Implement a Microsoft 365 Solution
4. Configure Networking
5. Configure Storage
6. Manage Data Access and Protection
7. Manage Remote Access
8. Manage Apps

9. Manage Updates and Recovery

Exam A

QUESTION 1

You have an on-premises Active Directory domain and a Microsoft Azure Active Directory. You have a Microsoft Intune subscription that is linked to the Azure Active Directory.

You configure directory synchronization between the on-premises Active Directory and the Azure Active Directory. You import 100 users into the Azure Active Directory.

Users report that they are unable to sign in to Microsoft Intune. You confirm that each user has a valid Active Directory account and password.

You open the Microsoft Intune Console and see the configuration of User1 as shown in the exhibit. (Click the Exhibit button.)



You need to ensure that the users can sign in to Microsoft Intune.

What should you do first?

- A. Activate the synchronized user accounts.
- B. Purchase an Enterprise Mobility Suite subscription.
- C. Configure Microsoft Intune for single sign-on.

D. Create a new Security Group in Microsoft Intune named Domain Intune Users.

Correct Answer: A

Section: Manage Identity

Explanation

Explanation/Reference:

References: <http://www.robinhobo.com/how-to-setup-microsoft-intune/>

QUESTION 2

Your network contains an Active Directory domain named contoso.com. All client computers run Windows 10 Enterprise and Microsoft Office 2013. All of the computers are joined to the domain.

Your company purchases a subscription to Office 365. An administrator creates an Office 365 account for each user and deploys a federated solution for Office 365.

You need to prevent the users from being prompted for a user account and a password each time they access services from Office 365.

Which account should you instruct the users to use when they sign in to their computer?



<https://vceplus.com/>

- A. a Microsoft account
- B. a local user account
- C. an Office 365 account
- D. a contoso.com account

Correct Answer: D

Section: Manage Identity

Explanation

Explanation/Reference:

QUESTION 3

A company has an Active Directory Domain Services (AD DS) domain. All client computers run Windows 10 Enterprise and are joined to the domain.

Corporate policy prohibits Homegroups on the corporate network.

You need to ensure that client computer network adapter settings do not support joining a Homegroup.

What should you do?

- A. Disable IPv6.
- B. Disable IPv4.
- C. Enable IPv6.
- D. Enable IPv4.

Correct Answer: A

Section: Manage Identity

Explanation

Explanation/Reference:

References: <https://h30434.www3.hp.com/t5/Notebook-Wireless-and-Networking/Windows-10-can-t-set-up-a-homegroup-on-this-computer/td-p/5581558>

QUESTION 4

Your network contains an Active Directory domain. All client computers run Windows 10 Enterprise.

Your company uses virtual smart cards.

A user named User1 requires a virtual smart card on a new client computer named Computer1.

Which two actions should you perform? Each correct answer presents part of the solution.

NOTE: Each correct selection is worth one point.

- A. Run the **tpmvscmgr.exe** command.
- B. Enroll Computer1 for a certificate.
- C. Run the **Enable-BitLocker** cmdlet.
- D. Enroll User1 for a certificate.

Correct Answer: AD

Section: Manage Identity

Explanation

Explanation/Reference:

QUESTION 5

You administer Windows 10 Enterprise computers for a software development company.

The marketing department is going to meet a potential customer to demonstrate the product. You want to configure a laptop that has a stand-alone virtual machine that runs Windows 10 Enterprise and the latest build of your software.

You need to enable BitLocker on the system drive of the virtual machine.

What should you do first?

- A. Join the virtual machine to an Active Directory Domain Services (AD DS) domain.
- B. Activate Windows.
- C. Turn on the **Require additional authentication at startup** local policy.
- D. Turn off the **Require additional authentication at startup** local policy.

Correct Answer: C

Section: Manage Identity

Explanation

Explanation/Reference:



QUESTION 6

Your network contains an Active Directory domain named contoso.com.

A user receives the following error message when attempting to sign in to a computer: "The trust relationship between this workstation and the primary domain failed."

You need to ensure that the user can sign in to the computer by using a domain user account.

Which tool should you use?

- A. Netstat
- B. Netsh
- C. Netdom
- D. Netcfg

Correct Answer: C

Section: Manage Identity

Explanation

Explanation/Reference:

References:

<https://www.petenetlive.com/KB/Article/0000504>

QUESTION 7

You support Windows 10 Enterprise computers that are members of an Active Directory domain. All of the computers have a dedicated recovery partition.

A computer indicates that the domain is unavailable. The password of a local administrator account on the computer is unknown. You need to reset the password for the local administrator account on the computer.

What should you do?

- A. Run **Windows To Go workspace** from a USB flash drive.
- B. Run the Windows 10 Enterprise installation wizard from a USB flash drive.
- C. Run **Microsoft Diagnostic and Recovery Tool (DaRT)** from a USB flash drive.
- D. Run **Windows Recovery Environment (WinRE)** from a recovery partition.

Correct Answer: C

Section: Manage Identity

Explanation

Explanation/Reference:

References: <https://www.top-password.com/knowledge/reset-windows-10-password.html>



QUESTION 8

A company has an Active Directory Domain Services (AD DS) domain with Windows 10 Enterprise client computers.

You need to minimize the amount of Trusted Platform Module (TPM) authorization information that is stored in the registry.

What should you do?

- A. Create a Group Policy Object (GPO) that enables the **Turn on TPM Local Encryption** policy setting.
- B. Enable **Platform Configuration Register indices (PCRs) 0, 2, 4, and 11** for the **Configure TPM validation profile for native UEFI firmware** configuration policy setting.
- C. Create a Group Policy Object (GPO) that disables the **Configure the level of TPM owner authorization information available to operating system** policy setting.
- D. Create a Group Policy Object (GPO) that sets the **Configure the level of TPM owner authorization information available to operating system** policy setting to **None**.

Correct Answer: D

Section: Manage Identity**Explanation**

Explanation/Reference: References: [https://docs.microsoft.com/en-us/previous-versions/windows/it-pro/windows-8.1-and-8/jj679889\(v=ws.11\)#BKMK_tpmgp_oauthos](https://docs.microsoft.com/en-us/previous-versions/windows/it-pro/windows-8.1-and-8/jj679889(v=ws.11)#BKMK_tpmgp_oauthos)

QUESTION 9

You have a computer that runs Windows 10.

You plan to configure Windows Hello.

You need to configure the PIN complexity rules for the computer.

Which policy setting should you modify?



<https://vceplus.com/>

- A. Credential User Interface
- B. Microsoft Passport for Work
- C. Smart Card
- D. Biometrics
- E. Windows Logon Options

Correct Answer: B

Section: Manage Identity**Explanation****Explanation/Reference:**

References: <http://www.kapilarya.com/how-to-configure-pin-complexity-in-windows-10>

QUESTION 10

You have a computer named C1 that runs Windows 10 Enterprise. C1 is member of a Homegroup.

You plan to join C1 to MS Azure AD tenant named T1.

You need to ensure that an Azure AD user named User1 is a member of the local Administrators group on C1, when C1 is joined to Azure AD.

What should you do?

- A. From azure classic portal modify the membership of T1 global admin group
- B. From the settings app on C1, set up assigned access
- C. From settings app on C1, modify the **Work access** settings
- D. From settings app on C1, modify the **Family & other user** settings

Correct Answer: A

Section: Manage Identity

Explanation

Explanation/Reference:

References:

<https://docs.microsoft.com/en-us/azure/active-directory-domain-services/active-directory-ds-admin-guide-join-windows-vm>

<http://www.tomsitpro.com/articles/windows-10-azure-active-directory-domain,2-27.html>

QUESTION 11

Note: This question is part of a series of questions that present the same scenario. Each question in the series contains a unique solution that might meet the stated goals. Some question sets might have more than one correct solution, while others might not have a correct solution.

After you answer a question in this section, you will NOT be able to return to it. As a result, these questions will not appear in the review screen.

You administer devices in your corporate environment. The company allows employees to bring their own devices (BYOD). All BYOD devices must run Windows 10. For employees who elect to not use BYOD, the company provides a corporate laptop.

The company has a Microsoft Intune subscription and all BYOD devices have the Intune client installed. None of the BYOD devices are joined to the domain. All the corporate standard devices are managed by System Center Configuration Manager (SCCM).

You have an application that was developed in house that must be installed on all the BYOD devices.

The application must be installed automatically on the BYOD devices without any user intervention.

Solution: You download and install a sideloading product activation key on all of the BYOD devices. You upload the application to the Intune storage and configure the app deployment action as required install.

Does the solution meet the goal?

- A. Yes
- B. No

Correct Answer: B

Section: Manage Identity
Explanation

Explanation/Reference:

QUESTION 12

Note: This question is part of a series of questions that present the same scenario. Each question in the series contains a unique solution that might meet the stated goals. Some question sets might have more than one correct solution, while others might not have a correct solution.

After you answer a question in this section, you will NOT be able to return to it. As a result, these questions will not appear in the review screen.

You administer devices in your corporate environment. The company allows employees to bring their own devices (BYOD). All BYOD devices must run Windows 10. For employees who elect to not use BYOD, the company provides a corporate laptop.

The company has a Microsoft Intune subscription and all BYOD devices have the Intune client installed. None of the BYOD devices are joined to the domain. All the corporate standard devices are managed by System Center Configuration Manager (SCCM).

You have an application that was developed in house that must be installed on all the BYOD devices.

The application must be installed automatically on the BYOD devices without any user intervention.

Solution: You create an SCCM application and deploy it to the All Mobile Devices collection.

Does the solution meet the goal?

- A. Yes
- B. No

Correct Answer: B

Section: Manage Identity
Explanation

Explanation/Reference:

QUESTION 13

Note: This question is part of a series of questions that present the same scenario. Each question in the series contains a unique solution that might meet the stated goals. Some question sets might have more than one correct solution, while others might not have a correct solution.

After you answer a question in this section, you will NOT be able to return to it. As a result, these questions will not appear in the review screen.

You administer devices in your corporate environment. The company allows employees to bring their own devices (BYOD). All BYOD devices must run Windows 10. For employees who elect to not use BYOD, the company provides a corporate laptop.

The company has a Microsoft Intune subscription and all BYOD devices have the Intune client installed. None of the BYOD devices are joined to the domain. All the corporate standard devices are managed by System Center Configuration Manager (SCCM).

You have an application that was developed in house that must be installed on all the BYOD devices.

The application must be installed automatically on the BYOD devices without any user intervention.

Solution: You upload the app to the Intune storage and make the app available.

Does the solution meet the goal?

- A. Yes
- B. No

Correct Answer: A

Section: Manage Identity

Explanation

Explanation/Reference:

References: <https://docs.microsoft.com/en-us/intune/lob-apps-windows>



QUESTION 14

Note: This question is part of a series of questions that present the same scenario. Each question in the series contains a unique solution that might meet the stated goals. Some question sets might have more than one correct solution, while others might not have a correct solution.

After you answer a question in this section, you will NOT be able to return to it. As a result, these questions will not appear in the review screen.

You administer devices in your corporate environment. The company allows employees to bring their own devices (BYOD). All BYOD devices must run Windows 10. For employees who elect to not use BYOD, the company provides a corporate laptop.

The company has a Microsoft Intune subscription and all BYOD devices have the Intune client installed. None of the BYOD devices are joined to the domain. All the corporate standard devices are managed by System Center Configuration Manager (SCCM).

You have an application that was developed in house that must be installed on all the BYOD devices.

The application must be installed automatically on the BYOD devices without any user intervention.

Solution: You download and install a sideloading product activation key on all of the BYOD devices. You upload the application to the Intune storage and configure the app deployment action as available install.

Does the solution meet the goal?

- A. Yes
- B. No

Correct Answer: B

Section: Manage Identity

Explanation

Explanation/Reference:

QUESTION 15

You have a Windows 10 Enterprise computer named Computer1 that has the Hyper-V feature installed. Computer1 hosts a virtual machine named VM1. VM1 runs Windows 10 Enterprise. VM1 connects to a private virtual network switch.

From Computer1, you need to remotely execute Windows PowerShell cmdlets on VM1.

What should you do?

- A. Run the **winrm.exe** command and specify the **-s** parameter.
- B. Run the **Powershell.exe** command and specify the **-Command** parameter.
- C. Run the **Receive-PSSession** cmdlet and specify the **-Name** parameter.
- D. Run the **Invoke-Command** cmdlet and specify the **-VMName** parameter.

Correct Answer: D

Section: Plan Desktop and Device Deployment

Explanation

Explanation/Reference:

Explanation:

We can use Windows PowerShell Direct to run PowerShell cmdlets on a virtual machine from the Hyper-V host. Because Windows PowerShell Direct runs between the host and virtual machine, there is no need for a network connection or to enable remote management.

There are no network or firewall requirements or special configuration. It works regardless of your remote management configuration. To use it, you must run Windows 10 or Windows Server Technical Preview on the host and the virtual machine guest operating system.

To create a PowerShell Direct session, use one of the following commands:

- Enter-PSSession -VMName VMName
- Invoke-Command -VMName VMName -ScriptBlock {commands}

References: https://msdn.microsoft.com/en-us/virtualization/hyperv_on_windows/about/whats_new

QUESTION 16

You deploy several tablet PCs that run Windows 10 Enterprise.

You need to minimize power usage when the user presses the sleep button.

What should you do?

- A. In Power Options, configure the sleep button setting to Sleep.
- B. In Power Options, configure the sleep button setting to Hibernate.
- C. Configure the active power plan to set the system cooling policy to passive.
- D. Disable the C-State control in the computer's BIOS.

Correct Answer: B

Section: Plan Desktop and Device Deployment

Explanation

Explanation/Reference:

Explanation:

We can minimize power usage on the tablet PCs by configuring them to use Hibernation mode. A computer in hibernation mode uses no power at all. Hibernation is a power-saving state designed primarily for laptops. While sleep puts your work and settings in memory and draws a small amount of power, hibernation puts your open documents and programs on your hard disk, and then turns off your computer. Of all the power-saving states in Windows, hibernation uses the least amount of power. On a laptop, use hibernation when you know that you won't use your laptop for an extended period and won't have an opportunity to charge the battery during that time.

References: <http://windows.microsoft.com/en-gb/windows7/sleep-and-hibernation-frequently-asked-questions>

QUESTION 17

You are the desktop administrator for a small company.

Your workgroup environment consists of Windows 10 Enterprise computers. You want to prevent 10 help desk computers from sleeping. However, you want the screens to shut off after a certain period of time if the computers are not being used.

You need to configure and apply a standard power configuration scheme for the 10 help desk computers on your network.

Which two actions should you perform? Each correct answer presents part of the solution.

- A. Import the power scheme by using `POWERCFG /IMPORT` on each of the remaining help desk computers. Set the power scheme to Active by using `POWERCFG /S`.
- B. Use `POWERCFG /X` on one help desk computer to modify the power scheme to meet the requirements. Export the power scheme by using `POWERCFG /EXPORT`.
- C. Use `POWERCFG /S` on one help desk computer to modify the power scheme to meet the requirements. Export the power scheme by using `POWERCFG /EXPORT`.
- D. Import the power scheme by using `POWERCFG /IMPORT` on each of the remaining help desk computers. Set the power scheme to Active by using `POWERCFG /X`.

Correct Answer: AB

Section: Plan Desktop and Device Deployment

Explanation

Explanation/Reference:

Explanation:

You can use the Powercfg.exe tool to control power settings and configure computers to default to Hibernate or Standby modes.

In this question, we use POWERCFG /X on one help desk computer to modify the power scheme to meet our requirements. After configuring the required settings, we can export the power scheme settings to a file by using POWERCFG /EXPORT.

We can then import the power scheme from the file on each of the remaining help desk computers by using POWERCFG /IMPORT. After importing the power scheme on the remaining computers, we need to set the new power scheme to be the active power scheme by using POWERCFG /S.

References: <https://docs.microsoft.com/en-us/windows-hardware/design/device-experiences/powercfg-command-line-options> **QUESTION 18**

A company has an Active Directory Domain Services (AD DS) domain. All client computers run Windows 10 Enterprise. Some computers have a Trusted Platform Module (TPM) chip.

You need to configure a single Group Policy object (GPO) that will allow Windows BitLocker Drive Encryption on all client computers.

Which two actions should you perform? Each correct answer presents part of the solution.

- A. Enable the **Require additional authentication at startup** policy setting.
- B. Enable the **Enforce drive encryption type on operating system drives** policy setting.
- C. Enable the option to allow BitLocker without a compatible TPM.
- D. Configure the TPM validation profile to enable **Platform Configuration Register indices (PCRs) 0, 2, 4, and 11**.

Correct Answer: AC

Section: Plan Desktop and Device Deployment

Explanation

Explanation/Reference:

Explanation:

We need to allow Windows BitLocker Drive Encryption on all client computers (including client computers that do not have Trusted Platform Module (TPM) chip).

We can do this by enabling the option to allow BitLocker without a compatible TPM in the group policy. The 'Allow BitLocker without a compatible TPM' option is a checkbox in the 'Require additional authentication at startup' group policy setting. To access the 'Allow BitLocker without a compatible TPM' checkbox, you need to first select Enabled on the 'Require additional authentication at startup' policy setting.

References: <http://www.howtogeek.com/howto/6229/how-to-use-bitlocker-on-drives-without-tpm/>

QUESTION 19

Employees are permitted to bring personally owned portable Windows 10 Enterprise computers to the office. They are permitted to install corporate applications by using the management infrastructure agent and access corporate email by using the Mail app.

An employee's personally owned portable computer is stolen.

You need to protect the corporate applications and email messages on the computer.

Which two actions should you perform? Each correct answer presents part of the solution.

- A. Prevent the computer from connecting to the corporate wireless network.
- B. Change the user's password.
- C. Disconnect the computer from the management infrastructure.
- D. Initiate a remote wipe.

Correct Answer: BD

Section: Plan Desktop and Device Deployment

Explanation

Explanation/Reference:

Explanation:

The personally owned portable Windows 10 Enterprise computers being managed by the management infrastructure agent enables the use of remote wipe. By initiating a remote wipe, we can erase all company data including email from the stolen device.

Microsoft Intune provides selective wipe, full wipe, remote lock, and passcode reset capabilities. Because mobile devices can store sensitive corporate data and provide access to many corporate resources, you can issue a remote device wipe command from the Microsoft Intune administrator console to wipe a lost or stolen device.

Changing the user's password should be the first step. If the stolen computer is accessed before the remote wipe happens, the malicious user could be able to access company resources if the laptop has saved passwords.

References: <https://technet.microsoft.com/en-gb/library/jj676679.aspx>

QUESTION 20

You use a Windows 8.1 tablet. The tablet receives Windows Update updates automatically from the Internet.

The tablet has Wi-Fi and is connected to a 3G mobile broadband Wi-Fi hot spot.

You need to minimize data usage while connected to this hot spot.

What should you do?



<https://vceplus.com/>

- A. Turn on **Airplane Mode**.
- B. Disable **File and Print Sharing** for mobile broadband connections.
- C. Configure the interface metric of IP settings for Wi-Fi connection as 1.
- D. Edit the Inbound Rule of Windows Firewall, and then disable **Internet Control Message Protocol (ICMP)** traffic.
- E. Configure the broadband connection as a metered network.

Correct Answer: E

Section: Plan Desktop and Device Deployment

Explanation



Explanation/Reference:

Explanation:

You can limit the bandwidth used by the broadband connection by configuring it as a metered network. A metered network is a network where data downloaded is 'metered' (measured) and you are charged for the amount of data downloaded.

Setting a connection as metered prevents Windows from automatically using bandwidth in a number of ways including the following:

- Disables automatic downloading of Windows updates: Windows won't automatically download updates from Windows Update on metered Internet connections. You'll get a "Download" button you can click whenever you want to install updates.
- Disables automatic downloading of app updates: The Windows Store won't automatically download updates for your installed "Store apps" on metered connections, either. Desktop apps like Chrome, Firefox, and others will continue updating themselves normally.
- Tiles may not update: Microsoft says that the live tiles on your Start menu or Start screen "may" stop updating on a metered connection:

References: <http://www.howtogeek.com/226722/how-when-and-why-to-set-a-connection-as-metered-on-windows-10/>

QUESTION 21

DRAG DROP

You have a Windows 8 computer. You need to migrate from Windows 8 to Windows 10 while retaining as much data as possible. You load the Windows 10 media into the DVD drive.

Which three actions should you perform next in sequence?

www.vceplus.com - VCE Exam Simulator - Download A+ VCE (latest) free Open VCE Exams - VCE to PDF Converter - PDF Online

Answer Area

Actions

Under installation options, choose
Keep personal files.

Run the Setup.exe file from the DVD.

Enter the license key.

Under installation options, choose
Windows settings.

Power the computer down and
boot from DVD.

Answers

Select and Place:

Correct Answer:

Answer Area

Actions

Under installation options, choose Windows settings.

Power the computer down and boot from DVD.

Answers

Run the Setup.exe file from the DVD.

Enter the license key.

Under installation options, choose Keep personal files.

Section: Plan Desktop and Device Deployment
Explanation

Explanation/Reference:

Explanation:

Box 1: Run the Setup.exe file from the DVD.

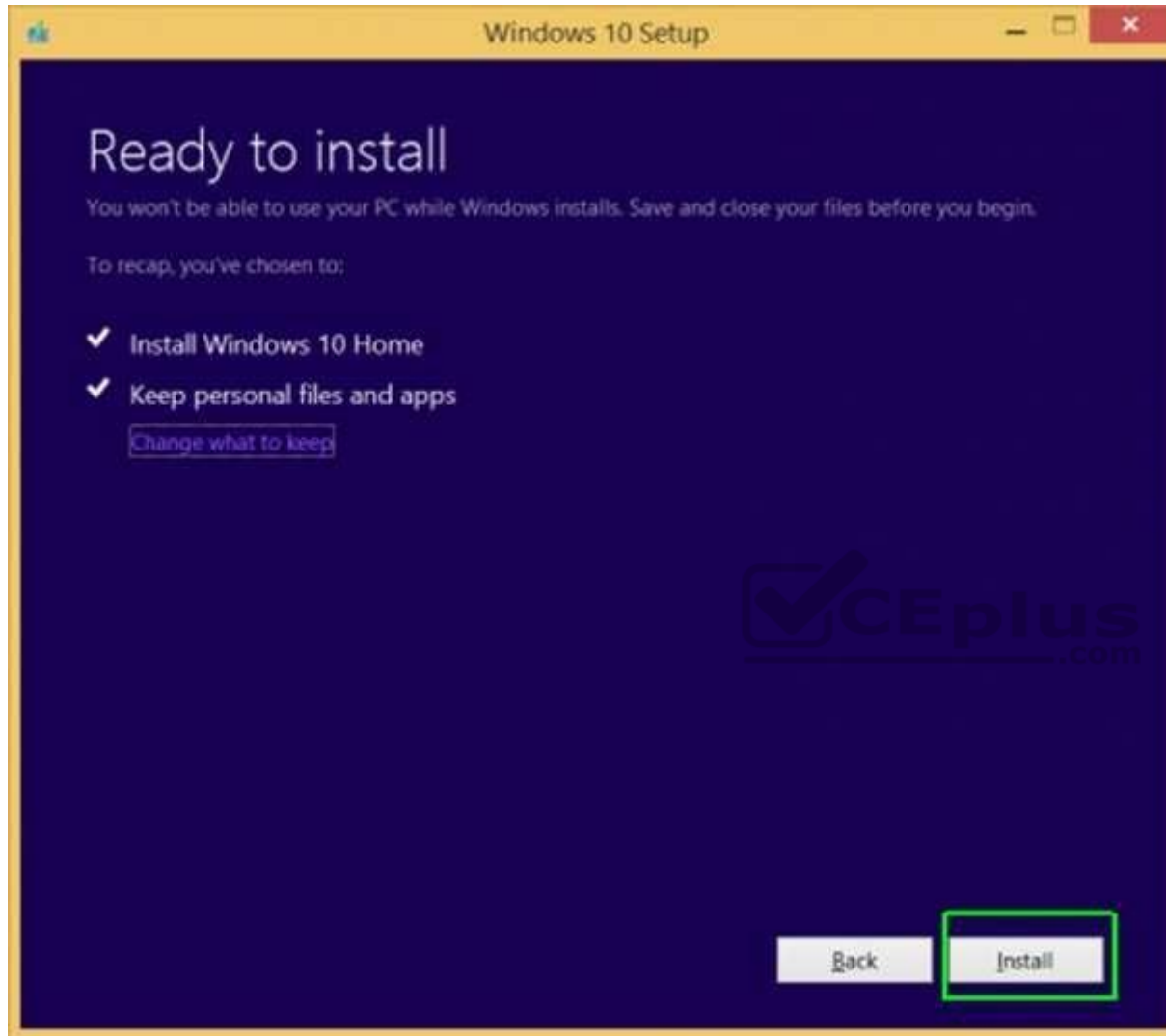
Launch setup.exe on the DVD drive to start the upgrade process.

Box 2: Enter the license key.

You will be prompted for the license key.

Box 3: Under the installation, choose Keep personal files.





References: <http://www.laptopmag.com/articles/how-to-upgrade-windows-10>

QUESTION 22

Your company has a standard power scheme for the sales team. You are replacing a laptop for a sales associate.

You import the power scheme onto the new laptop.

You need to apply the power scheme.

What should you do?

- A. Modify the power scheme under **Power and Sleep** settings.
- B. Run the **gpupdate /F** command.
- C. Run the **powercfg /S** command.
- D. Modify the advanced power settings.

Correct Answer: C

Section: Plan Desktop and Device Deployment

Explanation

Explanation/Reference:

Explanation:

You can use the powercfg.exe tool to control power schemes (also named power plans) to use the available sleep states, to control the power states of individual devices, and to analyze the system for common energy-efficiency and battery-life problems.

The powercfg /SETACTIVE or powercfg /S commands make the specified power scheme active on the system.

Note: To Import a Power Plan

1. Open an elevated command prompt.
2. Type the command below into the command prompt, and press Enter to export the power plan.
powercfg -import "Full path of .pow file"

Note: Substitute Full path of .pow file in the command above with the actual full path of the .pow file of the power plan you exported.

3. When finished, you can close the command prompt if you like.
4. Users on the PC will now be able to select the imported power plan as their active power plan

References: [https://msdn.microsoft.com/en-us/library/dn898599\(v=vs.85\).aspx](https://msdn.microsoft.com/en-us/library/dn898599(v=vs.85).aspx) <https://docs.microsoft.com/en-us/windows-hardware/design/device-experiences/powercfg-command-line-options>

QUESTION 23

You have a computer that runs Windows 10 and has BitLocker Drive Encryption (BitLocker) configured.

You need to change the BitLocker PIN for the drive.

What should you run?

- A. the **bitsadmin.exe** command
- B. the **Enable-BitLocker** cmdlet
- C. the **Add-BitLockerKeyProtector** cmdlet
- D. the **Set-PcdvDeviceUserPassword** cmdlet

Correct Answer: C

Section: Plan Desktop and Device Deployment

Explanation

Explanation/Reference:

QUESTION 24

You have a computer that runs Windows 10 and has BitLocker Drive Encryption (BitLocker) configured.

You need to change the BitLocker PIN for the drive.

What should you run?

- A. the **repair-bde.exe** Windows script file
- B. the **Enable-BitLocker** cmdlet
- C. the **bitsadmin.exe** command
- D. the **manage-bde.exe** command

Correct Answer: D

Section: Plan Desktop and Device Deployment

Explanation

Explanation/Reference:

References: [https://technet.microsoft.com/en-us/library/dd875513\(v=ws.10\).aspx#BKMK_changepin](https://technet.microsoft.com/en-us/library/dd875513(v=ws.10).aspx#BKMK_changepin)

QUESTION 25

A company has an Active Directory Domain Services (AD DS) domain. All client computers run Windows 10 Enterprise.

You are configuring security for a portable client computer that does not have a Trusted Platform Module (TPM) chip installed.

You need to configure local Group Policy to turn on Windows BitLocker Drive Encryption on the computer.

Which two actions should you perform? Each correct answer presents part of the solution.

NOTE: Each correct selection is worth one point.

- A. Enable the **Enforce drive encryption type on operating system drives** policy setting.
- B. Enable the option to **Allow BitLocker without a compatible TPM**.
- C. Enable the **Require additional authentication at startup** policy setting.
- D. Configure the TPM validation profile to enable **Platform Configuration Register indices (PCRs) 0, 2, 4, and 11**.

Correct Answer: BC

Section: Plan Desktop and Device Deployment

Explanation

Explanation/Reference:

References: <https://www.howtogeek.com/howto/6229/how-to-use-bitlocker-on-drives-without-tpm/>

QUESTION 26

A company has an Active Directory Domain Services (AD DS) domain with one physical domain controller. All client computers run Windows 10 Enterprise.

A client computer hosts a Windows 10 Enterprise virtual machine (VM) test environment. The VMs are connected to a private virtual switch that is configured as shown in the Virtual Switch Manager exhibit.



Virtual Switch Manager for COMPUTER1

Virtual Switches

- New virtual network switch
- New Virtual Switch
Private virtual switch

Global Network Settings

- MAC Address Range
00-15-5D-E5-CC-00 to 00-15-5D-E...

Virtual Switch Properties

Name:
New Virtual Switch

Notes:

Connection type
What do you want to connect this virtual switch to?

☐ External network:
Atheros AR9285 Wireless Network Adapter

☒ Allow management operating system to share this network adapter

☐ Enable single root I/O virtualization (SR-IOV)

☐ Internal network

☒ Private network

VLAN ID

☐ Enable virtual LAN identification for management operating system

The VLAN identifier specifies the virtual LAN that the management operating system will use for all network communications through this network adapter. This setting does not affect virtual machine networking.

2

Remove

i SR-IOV can only be configured when the virtual switch is created. An external virtual switch with SR-IOV enabled cannot be converted to an internal or private switch.

OK Cancel Apply

You have the following requirements:

- Configure the test environment to allow VMs to communicate with the host machine.
- Minimize impact on the host machine.

You need to meet the requirements.

What should you do first?

- A. Change the VLAN ID of the private virtual switch to Enable Virtual LAN identification.
- B. Create a new virtual switch with a Private Network connection type.
- C. Create a new virtual switch with an External Network connection type.
- D. Create a new virtual switch with an Internal Network connection type.

Correct Answer: D

Section: Plan Desktop and Device Deployment

Explanation

Explanation/Reference:

Explanation:

Virtual switches/ Hyper-V VLAN - you can create 3 different types of virtual switches depending the needs of your virtual machines and one single machine can use multiple virtual NICs that is member of different Virtual Switches.

- External - This virtual switch binds to the physical network adapter and create a new adapter you can see in Control Panel\Network and Internet\Network Connections so if a virtual machine needs contact outside the host machine this one is a must.

- Internal - This virtual switch can be used to connect all virtual machines and the host machine but cannot go outside that.

Private - This virtual switch can only be used by the virtual host

Hyper-V Networking: Three types of Virtual Networks:

Type	Parent OS	VMs on Same HV	VMs on Remote HV	LAN	Remark
External	x	x	x	x	Conn. Lost Temporarily
Internal	x	x			
Private		x			
Dedicated		x		x	

Configuring Virtual Networks Private will not allow communication with the host machine. External will allow communication with the host machine but also allow access to other machines on the host machine's network which is not a requirement.

References: <http://john.bryntze.net/jbkb-v2/certification-exam-70-687-configuring-windows-8-part-2-configure-hardware-and-applications-16/>

QUESTION 27

An organization has client computers that run Windows 8. You upgrade the client computers to Windows 10 Enterprise without migrating the local user profiles. You install the Windows Assessment and Deployment Kit (ADK) in the environment.

You need to migrate the user profiles from the Windows 8 installation to the Windows 10 Enterprise installation.

What should you do first on each client computer?

- A. Run the **loadstate** command.
- B. Copy the Default Profile to a folder on drive C.
- C. Run the **ImageX** command.
- D. Run Windows Easy Transfer and select the user profile to migrate.
- E. Run the **scanstate** command.

Correct Answer: E

Section: Plan Desktop and Device Deployment

Explanation

Explanation/Reference:



QUESTION 28

You are the system administrator for a company. All employees have devices that run Windows 10. Employees store many files on network shares.

You need to ensure that employees keep a copy of files from network shares on their devices, even when the devices are not connected to the company network.

What should you first?

- A. Run the **SettingSyncHost.exe** command.
- B. Enable File History.
- C. Create a new pool and storage space.
- D. Run the **Set-FileShare** Windows PowerShell cmdlet.
- E. Enable Offline Files.

Correct Answer: E

Section: Plan Desktop and Device Deployment

Explanation

Explanation/Reference:

References: <https://www.howtogeek.com/98793/how-to-use-offline-files-in-windows-to-cache-your-networked-files-offline/>

QUESTION 29

You have a Windows To Go workspace on a USB memory drive.

When you attempt to start a computer from the drive, you receive the following error message:

“Your PC/Device needs to be repaired. The application or operating system couldn't be loaded because a required file is missing or contains errors.”

You need to repair the Windows To Go workspace.

What should you do?

- A. Restart the computer in safe mode, and then perform a system restore.
- B. Restart the computer, and then select the Last Known Good Configuration.
- C. Reapply the Windows To Go image to the USB memory drive.
- D. Restart the computer by using a recovery disk, and then perform a system restore.

Correct Answer: C

Section: Plan Desktop and Device Deployment

Explanation

Explanation/Reference:

References:

<https://docs.microsoft.com/en-us/windows/deployment/planning/windows-to-go-frequently-asked-questions#a-href-idwtg-faq-recoveryadoes-windows-recoveryenvironment-work-with-windows-to-go-whats-the-guidance-for-recovering-a-windows-to-go-drive>

QUESTION 30

A company has an Active Directory Domain Services (AD DS) domain. All client computers run Windows 10 Enterprise and are joined to the domain.

You have the following requirements:

- Ensure that files in shared network folders are available offline.
- Minimize all data access times.
- Reduce network bandwidth usage.

You need to configure Group Policy settings to meet the requirements.

What should you do first?

- A. Enable the Synchronize all offline files when logging on policy setting.
- B. Enable and configure the Configure slow-link mode policy setting.
- C. Enable the Enable file synchronization on costed networks policy setting.
- D. Enable and configure the Specify administratively assigned Offline Files policy setting.

Correct Answer: C

Section: Plan Desktop and Device Deployment
Explanation

Explanation/Reference:

References: [https://docs.microsoft.com/en-us/previous-versions/windows/it-pro/windows-server-2012-R2-and-2012/hh968298\(v=ws.11\)](https://docs.microsoft.com/en-us/previous-versions/windows/it-pro/windows-server-2012-R2-and-2012/hh968298(v=ws.11))

QUESTION 31

A company has an Active Directory Domain Services (AD DS) domain with Windows 10 Enterprise client computers.

You need to configure 20 portable computers so that they sleep after 20 minutes when running on battery power. You must accomplish this goal by using the least amount of administrative effort.

Which two actions should you perform? Each correct answer presents part of the complete solution.

NOTE: Each correct selection is worth one point.

- A. Create a Group Policy object (GPO) that configures the Sleep Management settings.
- B. Edit the local Group Policy to configure the Power Management settings.
- C. Edit the local Group Policy to configure the Shut Down options.
- D. Link the Group Policy object (GPO) to the organizational unit containing the portable computers.
- E. Create a Group Policy object (GPO) that configures the Power Management settings.

Correct Answer: AD

Section: Plan Desktop and Device Deployment
Explanation

Explanation/Reference:

References:

<http://sourcedaddy.com/windows-7/configuring-power-management-settings-using-group-policy.html>

QUESTION 32

You have a computer named Computer1 that runs Windows 10 Enterprise.

You need to identify the locations that you can select as a File History drive.

What are two possible locations? Each correct answer presents a complete solution?

- A. the operating system volume
- B. an unformatted partition
- C. a non-system volume
- D. a network share

Correct Answer: CD

Section: Plan Desktop and Device Deployment

Explanation

Explanation/Reference:

Explanation:

You can use a non-system volume as a File History drive. This can be a volume on a hard drive in a computer, a Virtual Hard Drive (VHD) or an external USB drive. You can also use a network share as a File History drive.

In the File History Control Panel item, you can click the "Select Drive" option. This will display a list of all detected drives that are suitable for use as the File History drive. Under the list of drives, there is a link "Add Network Location". You can click the link and browse to or enter the path to the network share.

Incorrect Answers:

A: You cannot use the operating system volume (usually the C: drive) as the File History drive.

B: The volume used for the File History drive must be a formatted volume.

References: <http://computerbeginnersguides.com/blog/2015/08/23/enable-file-history-backups-in-windows-10/>

QUESTION 33

You have a laptop. Recently, you discovered that the battery life on the laptop is less than expected.

You need to generate a report that lists the expected battery life after a full charge and that shows historical battery life.

What should you use?

- A. The Power & sleep setting in the Settings app
- B. the **Powercfg** command
- C. Power Options in Control Panel
- D. Performance Monitor

Correct Answer: B

Section: Plan Desktop and Device Deployment

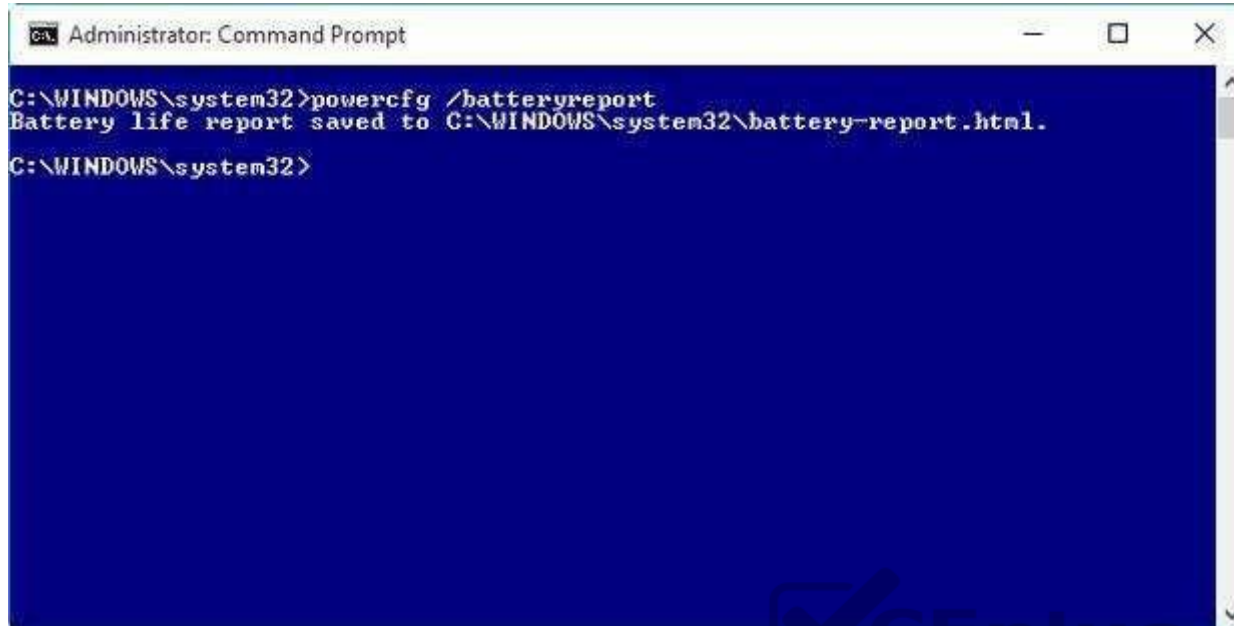
Explanation

Explanation/Reference:

Explanation:

Launching the PowerCfg command and running the Battery Report is easy once you know how.

To begin, you'll need to open an Administrator Command Prompt, which you can do by right-clicking on the Start button and selecting the Command Prompt (Admin) command. Then, type the command: `powercfg /batteryreport` and press [Enter]. The Power Configuration Utility will immediately compile the report and display the message shown in Figure A. Figure A



```
Administrator: Command Prompt
C:\WINDOWS\system32>powercfg /batteryreport
Battery life report saved to C:\WINDOWS\system32\battery-report.html.
C:\WINDOWS\system32>
```

References:

<https://www.howtogeek.com/217255/use-the-hidden-powercfg-tool-to-optimize-battery-life-on-windows/>

QUESTION 34

You support Windows 10 Enterprise desktop computers that are members of an Active Directory domain. Standard domain user accounts are configured with mandatory user profiles.

Several users have been transferred to a different department.

You need to allow the users to modify their profiles.

What should you do?

- A. Change the extension of the NTUSER file in the user profile directory to .dat
- B. Configure Folder Redirection by using Group Policy
- C. Configure the user's document library to include folders from network shares
- D. Remove the .man extension from the user profile name

Correct Answer: A

Section: Plan Desktop and Device Deployment

Explanation

Explanation/Reference:

References: [https://msdn.microsoft.com/en-us/library/windows/desktop/bb776895\(v=vs.85\).aspx](https://msdn.microsoft.com/en-us/library/windows/desktop/bb776895(v=vs.85).aspx)

QUESTION 35

Note: This question is part of a series of questions that present the same scenario. Each question in the series contains a unique solution that might meet the stated goals. Some question sets might have more than one correct solution, while others might not have a correct solution.

After you answer a question in this section, you will NOT be able to return to it. As a result, these questions will not appear in the review screen.

A company has a forest trust with a partner organization. Users from both organizations log on to devices that run Windows 8.1.

You plan to replace the devices with devices running Windows 10.

You need to migrate user profiles from both forests using the least amount of administrative effort.

Solution: You migrate each profile individually by using the User State Migration Tool (USMT).

Does the solution meet the goal?

A. Yes

B. No



Correct Answer: B

Section: Plan Desktop and Device Deployment

Explanation

Explanation/Reference:

QUESTION 36

Note: This question is part of a series of questions that present the same scenario. Each question in the series contains a unique solution that might meet the stated goals. Some question sets might have more than one correct solution, while others might not have a correct solution.

After you answer a question in this section, you will NOT be able to return to it. As a result, these questions will not appear in the review screen.

A company has a forest trust with a partner organization. Users from both organizations log on to devices that run Windows 8.1.

You plan to replace the devices with devices running Windows 10.

You need to migrate user profiles from both forests using the least amount of administrative effort.

Solution: You enable roaming profiles on the user accounts and have them log on to the new device.

Does the solution meet the goal?



<https://vceplus.com/>

- A. Yes
- B. No

Correct Answer: B

Section: Plan Desktop and Device Deployment

Explanation

Explanation/Reference:

QUESTION 37

Note: This question is part of a series of questions that present the same scenario. Each question in the series contains a unique solution that might meet the stated goals. Some question sets might have more than one correct solution, while others might not have a correct solution.

After you answer a question in this section, you will NOT be able to return to it. As a result, these questions will not appear in the review screen.

A company has a forest trust with a partner organization. Users from both organizations log on to devices that run Windows 8.1.

You plan to replace the devices with devices running Windows 10.

You need to migrate user profiles from both forests using the least amount of administrative effort.

Solution: You migrate both profiles simultaneously by using the User State Migration Tool (USMT).

Does the solution meet the goal?

- A. Yes
- B. No

Correct Answer: A

Section: Plan Desktop and Device Deployment

Explanation

Explanation/Reference:

www.vceplus.com - VCE Exam Simulator - Download A+ VCE (latest) free Open VCE Exams - VCE to PDF Converter - PDF Online

References: <https://docs.microsoft.com/en-us/windows/deployment/usmt/usmt-migrate-user-accounts#bkmk-migrateall>

QUESTION 38

DRAG DROP

A company plans to upgrade its client computer operating systems from Windows 8 to Windows 10 Enterprise.

You need to customize the User State Migration Tool (USMT) to exclude all files in the user's Documents folders.

Which command should you run on the client computers before the upgrade? To answer, drag the appropriate command elements to the correct location or locations in the answer area. Each command may be used once, more than once, or not at all. You may need to drag the split bar between panes or scroll to view content.

NOTE: Each correct selection is worth one point.

Select and Place:

Commands				Answer Area		
config.xml	/genconfig:	/i:	migapp.xml	Command	Command	Command
migdocs.xml	miguser.xml	scanstate	loadstate			

Correct Answer:

Commands				Answer Area		
		/i:	migapp.xml	config.xml	/genconfig:	scanstate
migdocs.xml	miguser.xml		loadstate			

Section: Plan Desktop and Device Deployment

Explanation

Explanation/Reference:

www.vceplus.com - VCE Exam Simulator - Download A+ VCE (latest) free Open VCE Exams - VCE to PDF Converter - PDF Online

References: <https://docs.microsoft.com/en-us/windows/deployment/usmt/usmt-customize-xml-files>

QUESTION 39

Note: This question is part of a series of questions that present the same scenario. Each question in the series contains a unique solution that might meet the stated goals. Some question sets might have more than one correct solution, while others might not have a correct solution.

After you answer a question in this section, you will NOT be able to return to it. As a result, these questions will not appear in the review screen.

A company has a forest trust with a partner organization. Users from both organizations log on to devices that run Windows 8.1.

You plan to replace the devices with devices running Windows 10.

You need to migrate user profiles from both forests using the least amount of administrative effort.

Solution: You migrate each profile by copying the user directories to the new device.

Does the solution meet the goal?

A. Yes

B. No

Correct Answer: B

Section: Plan Desktop and Device Deployment

Explanation

Explanation/Reference:

QUESTION 40

You administer desktop computers in your company network.

You are developing User State Migration Tool (USMT) procedures.

You need to ensure that the files located in C:\projects are included in the migration package.



What should you do?

Include the following code segment in the custom.ini file:

```
patternType = File
```

```
objectSet = C:\projects\*.*
```

Include the following code segment in the custom.xml file:

```
<objectSet>
```

```
  <pattern type="File">C:\projects\* [*]</pattern>
```

```
</objectSet>
```

A.



B.

Include the following code segment in the custom.xml file:

```
<include>
```

```
  <pattern type="File">C:\projects\* [*]</pattern>
```

```
</include>
```

Include the following code segment in the custom.ini file:

```
patternType = Folder
```

```
objectSet = C:\projects\*
```

C.

D.

Correct Answer: C

Section: Plan Desktop and Device Deployment

Explanation

Explanation/Reference:

QUESTION 41

Your network contains an Active Directory domain named contoso.com. All client computers in the domain run Windows 10 Enterprise. All domain users have roaming user profiles.

You need to prevent a user named User2 from being able to save changes to his roaming user profile.

Which file you modify?

- A. ntuser.dat
- B. registry.pol
- C. system.dat
- D. ntuser.pol

Correct Answer: D

Section: Plan Desktop and Device Deployment

Explanation

Explanation/Reference:

Explanation:

You would need to rename ntuser.pol to ntuser.dat to create a 'mandatory' profile.

QUESTION 42

A company plans to deploy Windows 10 to kiosks in public areas. User profiles must be persistent and must not be modified by users.

You need to configure the devices.

How should you configure the user accounts?

- A. domain profile
- B. mandatory profile
- C. local profile
- D. Microsoft account

Correct Answer: B

Section: Plan Desktop and Device Deployment**Explanation****Explanation/Reference:****QUESTION 43**

You administer a Windows 10 Enterprise computer that runs Hyper-V. The computer hosts a virtual machine with multiple snapshots. The virtual machine uses one virtual CPU and 512 MB of RAM.

You discover that the virtual machine pauses automatically and displays the state as paused-critical.

You need to identify the component that is causing the error.

Which component should you identify?

- A. no virtual switch defined
- B. insufficient memory
- C. insufficient hard disk space
- D. insufficient number of virtual processors

Correct Answer: C

Section: Plan Desktop and Device Deployment**Explanation****Explanation/Reference:**

Explanation:

In this question, the VM has “multiple snapshots” which would use up a lot of disk space. Virtual machines will go into the “Paused-Critical” state in Hyper-V if the free space on the drive that contains the snapshots goes below 200MB.

One thing that often trips people up is if they have their virtual hard disks configured on one drive – but have left their snapshot files stored on the system drive.

Once a virtual machine snapshot has been taken– the base virtual hard disk stops expanding and the snapshot file stores new data that is written to the disk – so it is critical that there is enough space in the snapshot storage location.

References: http://blogs.msdn.com/b/virtual_pc_guy/archive/2009/04/22/why-is-my-virtual-machine-paused-critical-hyper-v.aspx

QUESTION 44

You are the desktop administrator for a small company. The company has a workgroup environment.

Your manager asks you to set up a Windows 10 Enterprise computer and tablet for the company sales associate. The sales associate uses apps downloaded from the Windows Store. The sales associate wants the Windows experience and apps to be as consistent as possible between the computer and the tablet.

You need to configure the computer and tablet to synchronize settings.

Which account type should you use?

- A. Local
- B. Workgroup
- C. Domain
- D. Microsoft

Correct Answer: D

Section: Plan Desktop and Device Deployment

Explanation

Explanation/Reference:

References: <https://support.microsoft.com/en-za/help/4026102/windows-10-about-sync-settings>

QUESTION 45

You have a Microsoft Intune subscription.

You create two compliance policies named Comp1 and Comp2. You create a configuration policy named ConfigPol1. The settings in each policy do not conflict with other policies.

Comp1 has low security settings. Comp2 has medium security settings. ConfigPol1 has high security settings.

You have a device named Device1. Device1 is a member of groups that have Comp1, Comp2 and ConfigPol1 applied.

You need to identify which policies will be enforced on Device1.

What should you identify?

- A. ConfigPol1 only
- B. Comp1, Comp2 and ConfigPol1
- C. Comp2 and ConfigPol1 only
- D. Comp1 only
- E. Comp2 only
- F. Comp1 and Comp2 only
- G. Comp1 and ConfigPol1 only

Correct Answer: B

Section: Plan Desktop and Device Deployment

Explanation

Explanation/Reference:

QUESTION 46

A company has mobile devices that run Windows 10.

A device experiences battery life issues.

You need to generate an HTML report that includes any potential battery problems.

Which command should you run?

- A. **Powercfg /trace /d out.html**
- B. **Powercfg /batteryreport**
- C. **Powercfg /energy /output out.html**
- D. **Powercfg /devicequery all_devices**

Correct Answer: C

Section: Plan Desktop and Device Deployment

Explanation

Explanation/Reference:

References: <https://www.thewindowsclub.com/get-more-battery-life-out-of-your-laptop-in-windows-7>

QUESTION 47

You manage desktop computers on your company network. The finance department uses computers that run Windows 7 Enterprise and a 32-bit legacy application. The application has some compatibility issues with Windows 10 Enterprise. The application uses domain single sign-on for authentication.

The vendor releases a new version of the application that is fully compatible with Windows 10 Enterprise. These vendors cannot be installed on the same computer due to **HKEY_CURRENT_USER** registry setting conflicts.

You need to migrate the finance department computers to Windows 10 Enterprise while meeting the following requirements:

- Users are able to use the original version of the application while validating the new version.
- Once the new version is validated, the old version is removed with minimal effort. ▪

Users authenticate only once to use the application.

Which technology should you choose?

- A. Microsoft Application Compatibility Toolkit (ACT)
- B. User Experience Virtualization (UE-V)
- C. User Experience Virtualization (UE-V)
- D. Hyper-V

Correct Answer: A

Section: Plan Desktop and Device Deployment
Explanation

Explanation/Reference:

References: <https://docs.microsoft.com/en-us/windows/deployment/planning/act-technical-reference>

QUESTION 48

You administer computers that run Windows XP Professional. These computers have a wide range of line of business (LOB) applications installed.

You want to migrate from Windows XP Professional to Windows 10 Enterprise.

You need to identify which application will prompt users for elevated privileges.

What should you do first?

- A. Install the Microsoft Application Compatibility Toolkit (ACT).
- B. Install User Experience Virtualization (UE-V) on the Windows 10 Enterprise computers before you install the LOB applications.
- C. Configure the advanced audit setting on the Windows 10 Enterprise computers before you install the LOB applications.
- D. Install the Microsoft Assessment and Planning (MAP) Toolkit.

Correct Answer: A

Section: Plan Desktop and Device Deployment
Explanation

Explanation/Reference:

References: [https://docs.microsoft.com/en-us/previous-versions/windows/it-pro/windows-7/ee449434\(v=ws.10\)](https://docs.microsoft.com/en-us/previous-versions/windows/it-pro/windows-7/ee449434(v=ws.10))

QUESTION 49

You are a desktop support technician for your company.

You deliver new Windows 10 Enterprise laptops to the software developers. The software developers frequently use laptops to work remotely and are often disconnected from the corporate network. One of the software developers works on an application that must run on Windows XP, Windows Vista, Windows 7, and Windows 10 Enterprise. The software developer needs the ability to test the application natively on each of these operating systems.

You need to provide the software developer with a way to test the application on all operating system versions on the new laptop. The software developer must be able to perform the testing while working remotely without access to corporate resources.

What should you do?

- A. Create three virtual machines for Windows XP, Windows Vista, and Windows 7 on a company Windows Server 2012 that is running Hyper-V.

- B. Use Hyper-V to create three virtual machines that provide Windows XP, Windows Vista, and Windows 7 environments.
- C. Install the Windows PE version of Windows XP, Windows Vista, and Windows 7 on three USB drives and boot from each drive to test each operating system version.
- D. Change the compatibility mode settings of the application to Windows XP, Windows Vista, and Windows 7 before testing each operating system version.

Correct Answer: B

Section: Plan Desktop and Device Deployment

Explanation

Explanation/Reference:

References:

<https://www.sitepoint.com/hyper-v-virtual-machine-tutorial/>

QUESTION 50

Your network contains an Active Directory domain named contoso.com. All users have email addresses in the @adatum.com domain.

You need to ensure that users can register Windows 10 mobile devices for mobile device management (MDM).

Which DNS record should you create?

- A. Enterpriseregistration.adatum.com
- B. Deviceregistration.adatum.com
- C. Deviceregistration.contoso.com
- D. Enterpriseregistration.contoso.com



Correct Answer: D

Section: Plan and Implement a Microsoft 365 Solution

Explanation

Explanation/Reference:

References: <https://technet.microsoft.com/en-us/windows/dn771709.aspx>

QUESTION 51

You support Windows 10 Enterprise computers. Your company protects all laptops by using the BitLocker Network Unlock feature.

Some employees work from home.

You need to ensure that employees can log on to their laptops when they work from home.

What should you do?

- A. Have users run the **Manage-bde.exe -unlock** command before they disconnect from the company network.

- B. Ensure that the Trusted Platform Module (TPM) chips in the laptops are version 1.2 or greater.
- C. Enable BitLocker to Go.
- D. Provide employees with their BitLocker PINs.

Correct Answer: D

Section: Plan and Implement a Microsoft 365 Solution

Explanation

Explanation/Reference:

QUESTION 52

A company has Windows 10 Enterprise client computers. The company uses Windows BitLocker Drive Encryption with the data-only option on all client computers.

You delete a file containing highly confidential information from your computer.

You need to clear the free space on the hard drive to minimize the chance of the confidential information being recovered.

Which command should you run on the client computer?

- A. **diskpart clean**
- B. **manage-bde -w**
- C. **chkdsk /spotfix**
- D. **BdeHdCfg -target c: shrink**



Correct Answer: B

Section: Plan and Implement a Microsoft 365 Solution

Explanation

Explanation/Reference:

References: <https://technet.microsoft.com/en-us/library/jj647761.aspx>

QUESTION 53

Note: This question is part of a series of questions that present the same scenario. Each question in the series contains a unique solution that might meet the stated goals. Some question sets might have more than one correct solution, while others might not have a correct solution.

After you answer a question in this section, you will NOT be able to return to it. As a result, these questions will not appear in the review screen.

Your company uses Microsoft Office 365.

You need to ensure that users are prompted to label and classify documents while they edit documents.

Solution: You create a Microsoft Intune mobile device management (MDM) policy for mobile devices.

Does the solution meet the goal?

- A. Yes
- B. No

Correct Answer: B

Section: Plan and Implement a Microsoft 365 Solution

Explanation

Explanation/Reference:

References: <https://docs.microsoft.com/en-us/information-protection/deploy-use/configure-policy>

QUESTION 54

Note: This question is part of a series of questions that present the same scenario. Each question in the series contains a unique solution that might meet the stated goals. Some question sets might have more than one correct solution, while others might not have a correct solution.

After you answer a question in this section, you will NOT be able to return to it. As a result, these questions will not appear in the review screen.

Your company uses Microsoft Office 365.

You need to ensure that users are prompted to label and classify documents while they edit documents.

Solution: You import the data from on-premises to Office 365.

Does the solution meet the goal?

- A. Yes
- B. No

Correct Answer: B

Section: Plan and Implement a Microsoft 365 Solution

Explanation

Explanation/Reference:

References: <https://docs.microsoft.com/en-us/information-protection/deploy-use/configure-policy>

QUESTION 55

You have a Microsoft Intune subscription.

You need to uninstall the Intune agent from a computer.

What should you do?



<https://vceplus.com/>

- A. From the Groups node in the Microsoft Intune administration portal, click **Retire/Wipe**.
- B. From the computer, use Programs and Features in Control Panel.
- C. From the Groups node in the Microsoft Intune administration portal, click **Remote Lock** on the Remote Tasks menu.
- D. From the computer, run the **cltui.exe** command.

Correct Answer: A

Section: Plan and Implement a Microsoft 365 Solution

Explanation

Explanation/Reference:

References: <https://www.petervanderwoude.nl/post/uninstall-the-microsoft-intune-client/>

QUESTION 56

An organization has Microsoft System Center Configuration Manager (SCCM) version 1610.

The organization purchases a Microsoft Intune subscription and must configure the mobile device management (MDM) authority for that subscription to use SCCM. You need to deploy the required role in SCCM to support the Intune service.

Which role must you deploy in SCCM?

- A. enrollment proxy point
- B. service connection point
- C. enrollment point
- D. management point

Correct Answer: B

Section: Plan and Implement a Microsoft 365 Solution
Explanation

Explanation/Reference:

References:

<https://docs.microsoft.com/en-us/sccm/core/servers/deploy/configure/about-the-service-connection-point>

QUESTION 57

Note: This question is part of a series of questions that present the same scenario. Each question in the series contains a unique solution that might meet the stated goals. Some question sets might have more than one correct solution, while others might not have a correct solution.

After you answer a question in this section, you will NOT be able to return to it. As a result, these questions will not appear in the review screen.

Your company uses Microsoft Office 365.

You need to ensure that users are prompted to label and classify documents while they edit documents.

Solution: You enable Microsoft Azure Information Protection.

Does the solution meet the goal?

- A. Yes
- B. No



Correct Answer: A

Section: Plan and Implement a Microsoft 365 Solution
Explanation

Explanation/Reference:

References: <https://docs.microsoft.com/en-us/information-protection/deploy-use/configure-policy>

QUESTION 58

Your network contains an Active Directory domain named contoso.com. Contoso.com is synchronized to a Microsoft Azure Active Directory. You have a Microsoft Intune subscription.

Your company plans to implement a Bring Your Own Device (BYOD) policy. You will provide users with access to corporate data from their personal iOS devices.

You need to ensure that you can manage the personal iOS devices.

What should you do first?

- A. Install the Company Portal app from the Apple App Store.

- B. Create a device enrollment manager account.
- C. Set a DNS alias for the enrollment server address.
- D. Configure the Intune Service to Service Connector for Hosted Exchange.
- E. Enroll for an Apple Push Notification (APN) certificate.

Correct Answer: E

Section: Plan and Implement a Microsoft 365 Solution

Explanation

Explanation/Reference:

Explanation:

An Apple Push Notification service (APNs) certificate must first be imported from Apple so that you can manage iOS devices. The certificate allows Intune to manage iOS devices and institutes an accredited and encrypted IP connection with the mobile device management authority services.

References:

<https://technet.microsoft.com/library/dn408185.aspx> <https://technet.microsoft.com/en-us/library/dn764961.aspx> <https://technet.microsoft.com/en-us/library/mt346003.aspx>
<https://technet.microsoft.com/en-us/library/dn646988.aspx>

QUESTION 59

You manage Microsoft Intune for a company named Contoso. Intune client computers run Windows 10 Enterprise.

You notice that there are 25 mandatory updates listed in the Intune administration console.

You need to prevent users from receiving prompts to restart Windows following the installation of mandatory updates.

Which policy template should you use?

- A. Microsoft Intune Agent Settings
- B. Windows Configuration Policy
- C. Microsoft Intune Center Settings
- D. Windows Custom Policy (Windows 10 and Windows 10 Mobile)

Correct Answer: A

Section: Plan and Implement a Microsoft 365 Solution

Explanation

Explanation/Reference:

Explanation:

To configure the Prompt user to restart Windows during Intune client agent mandatory updates update policy setting you have to configure the Microsoft Intune

Agent Settings policy. Setting the Prompt user to restart Windows during Intune client agent mandatory updates setting to No would prevent users from receiving prompts to restart Windows following the installation of mandatory updates.

References:

<http://blogs.technet.com/b/windowsintune/archive/2013/01/09/policy-settings-for-mandatory-updates.aspx> <https://technet.microsoft.com/en-us/library/dn646989.aspx>

QUESTION 60

You have a Microsoft Intune subscription.

You have three security groups named Security1, Security2 and Security3. Security1 is the parent group of Security2. Security2 has 100 users.

You need to change the parent group of Security2 to be Security3.

What should you do first?

- A. Edit the properties of Security1.
- B. Edit the properties of Security2.
- C. Delete security2.
- D. Remove all users from Security2.



Correct Answer: C

Section: Plan and Implement a Microsoft 365 Solution

Explanation

Explanation/Reference:

Explanation:

You cannot change the parent group of a security group in Microsoft Intune. You can only delete the group and recreate another group with the correct parent. Deleting a group does not delete the users that belong to that group. Therefore, you do not need to remove the users from the group; you can just delete the group and recreate it.

References: <https://technet.microsoft.com/en-gb/library/dn646990.aspx>

QUESTION 61

You plan to deploy a Microsoft Azure RemoteApp collection by using a custom template image. The image will contain Microsoft Office 365 ProPlus apps.

You need to ensure that multiple users can run Office 365 ProPlus from the custom template image simultaneously.

What should you include in the configuration file?

- A. `<Property Name = "FORCEAPPSHUTDOWN" Value = "FALSE" />`
- B. `<Product ID = "0365ProPlusRetail" />`

C. `<Property Name = "SharedComputerLicensing" Value = "1" />`

D. `<Property Name = "AUTOACTIVATE" Value = "1" />`

Correct Answer: C

Section: Plan and Implement a Microsoft 365 Solution

Explanation

Explanation/Reference:

Explanation:

To make Microsoft Office 365 ProPlus apps available as RemoteApps, you need to enable Shared computer activation. You do this by including the following text in the configuration file:

`<Property Name = "SharedComputerLicensing" Value= "1" />`

Shared computer activation lets you to deploy Office 365 ProPlus to a computer in your organization that is accessed by multiple users. For example, several nurses at a hospital connect to the same remote server to use their applications or a group of workers share a computer at a factory.

The most common shared computer activation scenario is to deploy Office 365 ProPlus to shared computers by using Remote Desktop Services (RDS). By using RDS, multiple users can connect to the same remote computer at the same time. The users can each run Office 365 ProPlus programs, such as Word or Excel, at the same time on the remote computer.

References: <https://technet.microsoft.com/en-us/library/dn782858.aspx>



QUESTION 62

You have a Microsoft Intune subscription.

You need to uninstall the Intune agent from a computer.

What should you do?

- A. From the Groups node in the Microsoft Intune administration portal, click **Delete**.
- B. From the computer, run the **provisioningutil.exe** command.
- C. From the computer, run the **cltui.exe** command.
- D. From the computer, use Programs and Features in Control Panel.

Correct Answer: B

Section: Plan and Implement a Microsoft 365 Solution

Explanation

Explanation/Reference:

Explanation:

There are two methods to uninstall the Microsoft Intune client.

- By using the Microsoft Intune administration console and selecting Retire/Wipe. ▪
- By using the ProvisioningUtil.exe on the client machine.

Incorrect Answers:

A: You would need to select Retire/Wipe in the Microsoft Intune administration portal, not Delete.

References: <https://www.petervanderwoude.nl/post/uninstall-the-microsoft-intune-client/>

QUESTION 63

You are a Windows 10 Enterprise user. Your organization has purchased an Office 365 subscription. You install Microsoft Skype for Business and Microsoft Outlook on your computer.

You need to connect Office 365 to Skype for Business and Outlook.

What should you do?

- A. Run the People application. Add a new account by using your Office 365 credentials.
- B. Run the Office Professional Plus setup from the Office 365 portal.
- C. Run the Windows Mail application. Add a new account by using your Office 365 credentials.
- D. Run the Office 365 desktop setup from the Office 365 portal.

Correct Answer: D

Section: Plan and Implement a Microsoft 365 Solution

Explanation

Explanation/Reference:

References: <https://www.agileit.com/news/manual-office-365-setup-workstations/>

QUESTION 64

You are the system administrator for a company. You are deploying a new Microsoft Office 365 environment. You have an existing on-premises Microsoft environment.

You must deploy Microsoft Intune in a hybrid environment.

You need to configure the service connection point role.

Which tool should you use?

- A. Microsoft System Center Configuration Manager (SCCM) console
- B. Microsoft Office 365 Admin Center portal
- C. Microsoft Office AD Admin Center portal

D. Microsoft System Center Operations Manager (SCOM) console

Correct Answer: A

Section: Plan and Implement a Microsoft 365 Solution

Explanation

Explanation/Reference:

References: <https://docs.microsoft.com/en-us/sccm/mdm/deploy-use/create-service-connection-point>

QUESTION 65

A company has 100 Windows 10 Enterprise client computers. The client computers are members of a workgroup.

A custom application requires a Windows Firewall exception on each client computer.

You need to configure the exception on the client computers without affecting existing firewall settings.

Which Windows PowerShell cmdlet should you run on each client computer?

- A. **Set-NetFirewallRule**
- B. **New-NetFirewallRule**
- C. **New-NetIPSecMainModeRule**
- D. **Set-NetFirewallProfile**
- E. **Set-NetFirewallSetting**



Correct Answer: B

Section: Configure Networking

Explanation

Explanation/Reference:

References: <https://technet.microsoft.com/en-us/library/jj554908.aspx>

QUESTION 66

You have an unsecured wireless network for users to connect to from their personal Windows 10 devices.

You need to prevent Wi-Fi Sense from sharing information about the unsecured wireless network.

What should you do?

- A. Configure the SSID of the unsecured wireless to contain _optout.
- B. Instruct the users to disable Internet Protocol Version 6 (TCP/IPv6) on their wireless network adapters.

- C. Configure the SSID of the guest wireless to be hidden.
- D. Instruct the users to turn off Network Discovery on their devices.

Correct Answer: A

Section: Configure Networking

Explanation

Explanation/Reference:

References: <http://www.pcworld.com/article/2951824/windows/how-to-disable-windows-10s-wi-fi-sense-password-sharing.html>

QUESTION 67

You have a computer that runs Windows 10.

You need to block all outbound and inbound communications that occur over TCP 9997, TCP 9999, and TCP 4000.

What is the minimum number of rules that you must create?

- A. 1
- B. 2
- C. 3
- D. 6



Correct Answer: D

Section: Configure Networking

Explanation

Explanation/Reference:

References: [https://technet.microsoft.com/en-us/library/dd421709\(v=ws.10\).aspx](https://technet.microsoft.com/en-us/library/dd421709(v=ws.10).aspx)

QUESTION 68

You have a laptop that has connections for three WiFi network named WiFi1, WiFi2, and WiFi 3.

You need to ensure that the laptop connects to WiFi1 when multiple WiFi1 networks are available.

What should you do?

- A. From Netsh, configure the **WLAN** context.
- B. From Network Connections in Control Panel, modify the bindings for the WiFi.
- C. From the Windows Settings app, configure the **Wi-Fi Sense** settings.
- D. From Network Connections in Control Panel, modify the network provider order.

Correct Answer: D

Section: Configure Networking

Explanation

Explanation/Reference:

References:

<http://www.quepublishing.com/articles/article.aspx?p=2455390&seqNum=3>

QUESTION 69

Note: This question is part of a series of questions that use the same or similar answer choices. An answer choice may be correct for more than one question in the series. Each question is independent of the other questions in this series. Information and details in a question apply only to that question.

You have a laptop that is joined to an Active Directory domain.

You establish a WiFi connection to a customer's WiFi network.

You need to identify whether the current network location of the WiFi connection is private or public.

Which Control Panel application should you use?

- A. Phone and Modem
- B. RemoteApp and Desktop Connections
- C. System
- D. Credential Manager
- E. Work Folders
- F. Power Options
- G. Sync Center
- H. Network and Sharing Center



Correct Answer: H

Section: Configure Networking

Explanation

Explanation/Reference:

QUESTION 70

Note: This question is part of a series of questions that use the same or similar answer choices. An answer choice may be correct for more than one question in the series. Each question is independent of the other questions in this series. Information and details in a question apply only to that question.

You need to change the password used for an L2TP VPN connection.

Which Control Panel application should you use?

- A. Work Folders
- B. Phone and Modem
- C. Credential Manager
- D. Sync Center
- E. System
- F. Network and Sharing Center
- G. RemoteApp and Desktop Connections
- H. Power Options

Correct Answer: F

Section: Configure Networking

Explanation

Explanation/Reference:

References: https://www.watchguard.com/help/docs/wsm/xtm_11/en-us/content/en-us/mvpn/l2tp/l2tp_vpn_client_win7_c.html

QUESTION 71

HOTSPOT

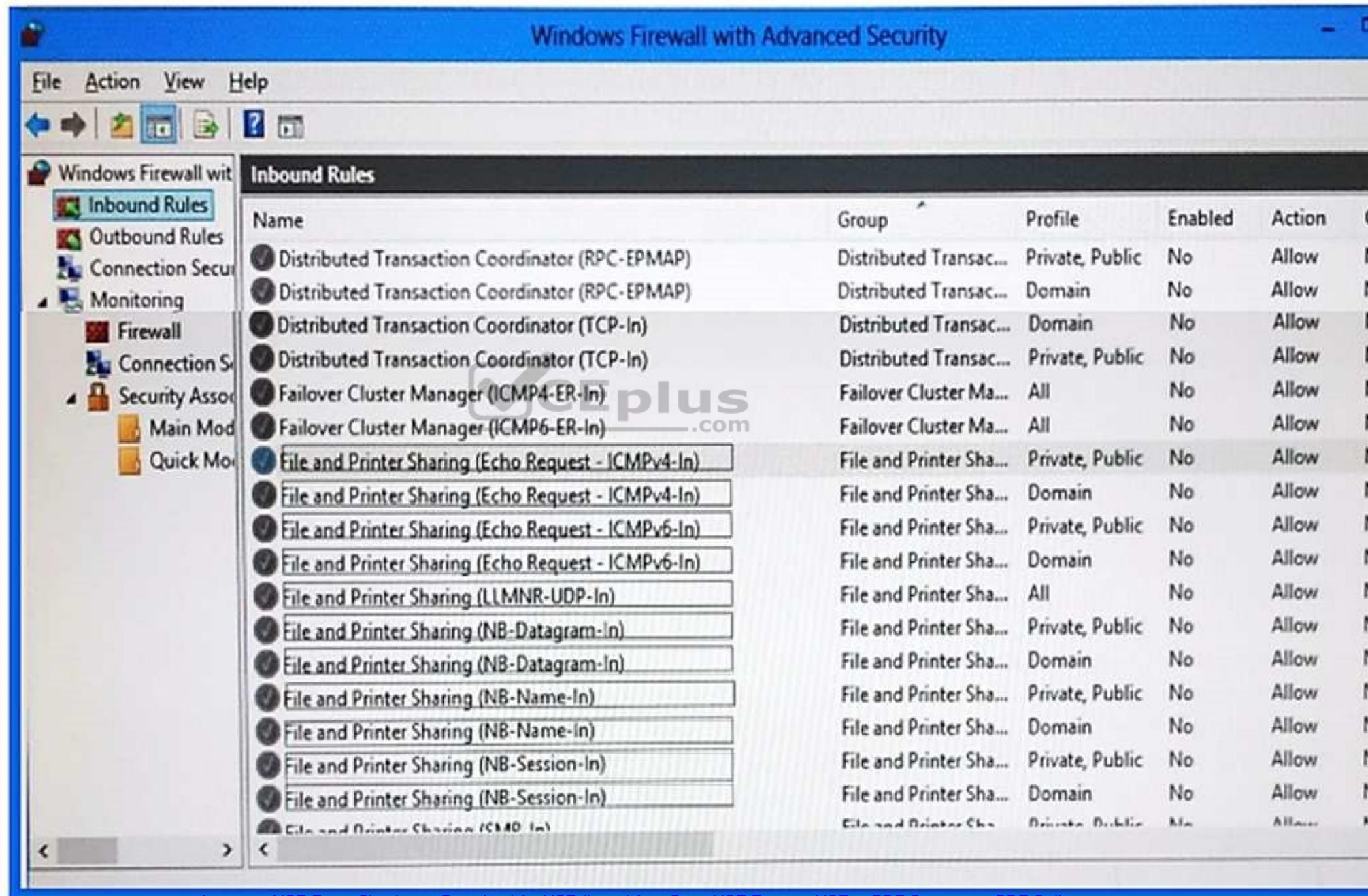
You administer Windows 10 Enterprise client computers in your company network. The computers belong to an Active Directory Domain Services (AD DS) domain and have Windows Firewall enabled. All of the computers are connected to the Internet.

You ping one of the desktops, which has an IP Address of 10.4.4.4, but you receive the message "Request timed out".

You need to configure the desktop to reply to ping request from other devices on the company network.

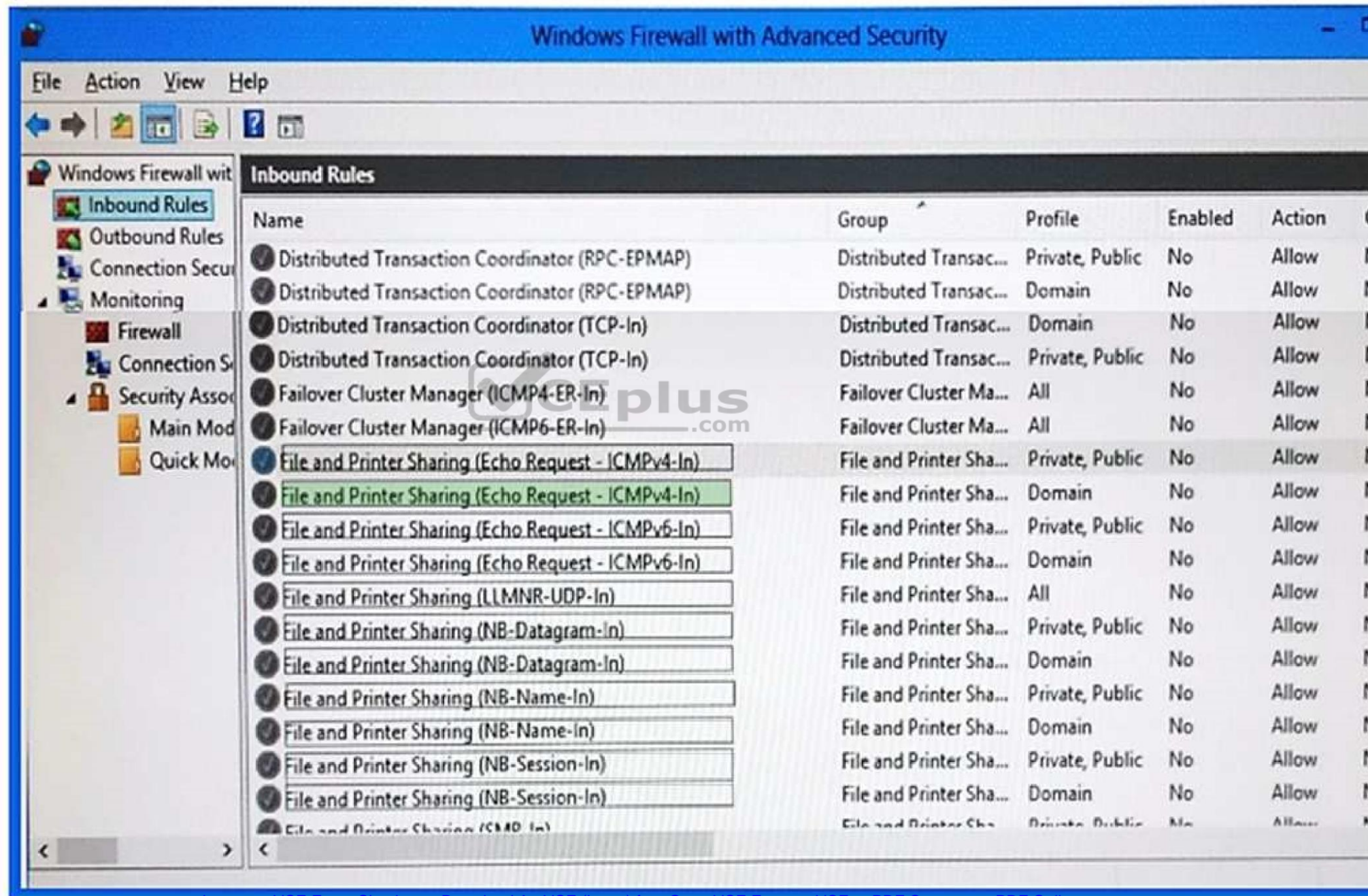
From the Windows Firewall with Advanced Security window, which inbound rule should you modify? To answer, select the appropriate inbound rule in the answer area.

Hot Area:



Correct Answer:





Section: Configure Networking
Explanation

Explanation/Reference:

Explanation:

File and Printer Sharing (Echo Request - ICMPv4-In) Domain

References:

<https://kb.iu.edu/d/aopy> [https://technet.microsoft.com/en-us/library/cc749323\(v=ws.10\).aspx](https://technet.microsoft.com/en-us/library/cc749323(v=ws.10).aspx) <https://community.sophos.com/kb/en-us/117837>

QUESTION 72

You have a computer that runs Windows 10. The computer is a member of an Active Directory domain.

You need to enable Network Discovery on the computer.

Which option should you select from the Network and Sharing Center?

- A. Change adapter settings
- B. Change advanced sharing settings
- C. Internet Options
- D. Set up a new connection or network



Correct Answer: B

Section: Configure Networking
Explanation

Explanation/Reference:

QUESTION 73

You administer a corporate network. Employees use docking stations for Windows 10 devices when the employees are working in their offices.

The wireless adapters of the devices are connected to a specific network. The docking stations are connected to a separate network that uses twisted pair cabling.

You need to ensure that the devices can access all resources from each network using either network adapter.

What should you do?

- A. Configure a network bridge.
- B. Configure Internet Connection Sharing (ICS).
- C. Configure VPN Reconnect.

D. Turn on Network Discovery.

Correct Answer: C

Section: Configure Networking

Explanation

Explanation/Reference:

References: [https://docs.microsoft.com/en-us/previous-versions/windows/it-pro/windows-server-2008-R2-and-2008/dd637803\(v=ws.10\)](https://docs.microsoft.com/en-us/previous-versions/windows/it-pro/windows-server-2008-R2-and-2008/dd637803(v=ws.10))

QUESTION 74

A company has Windows 10 Enterprise client computers. The corporate network is configured for IPv4 and IPv6.

You need to disable Media Sensing for IPv6 on the client computers without affecting IPv4 communications.

What should you do on each client computer?

- A. Run the **Set-NetIPv4Protocol** Windows PowerShell cmdlet.
- B. Run the **Disable-NetAdapterBinding** Windows PowerShell cmdlet.
- C. Run the **Set-NetIPv6Protocol** Windows PowerShell cmdlet.
- D. Run the **Disable-NetAdapter** Windows PowerShell cmdlet.

Correct Answer: C

Section: Configure Networking

Explanation

Explanation/Reference:

References: <https://docs.microsoft.com/en-us/powershell/module/nettcpip/set-netipv6protocol?view=win10-ps>

QUESTION 75

You administer Windows 10 Enterprise client computers in your company network. The company has an Active Directory Domain Services (AD DS) domain named contoso.com. The domain contains a DHCP server that is configured to lease IPv4 and IPv6 addresses.

A client computer named Computer1 is configured to obtain IPv4 and IPv6 addresses automatically.

A user reports that an IPv6-enabled application named App1 is not working on Computer1.

You discover that Computer1 has an IPv6 address prefix of **FE80::**. You are able to ping Computer1 successfully by using IPv4, but when you use IPv6, your ping requests time out.

You need to ensure that Computer1 will support App1.

Which command should you use?

- A. **ipconfig /renew6**
- B. **ipconfig /setclassid6**
- C. **ipconfig /renew**
- D. **ipconfig /release6**

Correct Answer: C

Section: Configure Networking

Explanation

Explanation/Reference:

References: <https://technet.microsoft.com/en-us/library/cc938688.aspx>

QUESTION 76

A company has an Active Directory Domain Services domain. All client computers run Windows 10 Enterprise and are joined to the domain.

You run the **ipconfig** command on a client computer. The following output depicts the results.

Ethernet adapter Local Area Connection 3:

```
Connection-specific DNS Suffix....:
IPv4 Address.....:192.168.1.102
Subnet Mask .....:255.255.255.0
Default Gateway .....:
```

Tunnel adapter isatap.{DFCE21ED-2EE5-46BA-93BE-97743DE6FC94}:

```
Media State:.....: Media disconnected
Connection-specific DNS Suffix....:
```

You need to ensure that you can establish a DirectAccess connection from the client computer to the network.

What should you do?



<https://vceplus.com/>

- A. Configure a static IPv4 address.
- B. Remove the computer from the domain.
- C. Enable IPV6 on the network adapter.
- D. Create a new VPN connection.

Correct Answer: C

Section: Configure Networking

Explanation

Explanation/Reference:

References:

<https://docs.microsoft.com/en-us/windows-server/remote/remote-access/directaccess/single-server-wizard/da-basic-configure-s1-infrastructure> **QUESTION 77**

You have a new computer that runs Windows 10.

The computer is a member of a workgroup and is connected to a Wi-Fi network.

You discover that the active network is a public network.

You need to change the network location to a private network.

Which Control Panel application should you use?

- A. Network and Sharing Center
- B. System
- C. Windows Firewall
- D. HomeGroup

Correct Answer: A

Section: Configure Networking

Explanation



Explanation/Reference:

References: <https://tinkertry.com/how-to-change-windows-10-network-type-from-public-to-private>

QUESTION 78

A company has client computer that run Win 10 enterprise.

The corporate network is configured for IPv4 and IPv6.

You need to disable IPv6 on the client computer without affecting IPv4 communications.

What should you do on each computer?

- A. Run the **Set-NetIPv4Protocol** Windows PowerShell cmdlet
- B. Run the **Set-NetIPv6Protocol** Windows PowerShell cmdlet
- C. Run **Disable-NetAdapter** Windows PowerShell cmdlet
- D. Run the **Disable-NetAdapterBinding** Windows PowerShell cmdlet

Correct Answer: D

Section: Configure Networking

Explanation

**Explanation/Reference:**

References:

<http://juventusitprofessional.blogspot.co.za/2013/11/powershell-windows-2012-disable-ipv6.html> <https://docs.microsoft.com/en-us/powershell/module/nettcpip/set-netipv6protocol?view=win10-ps>

QUESTION 79

You need to create a new connection to the Internet that uses PPOE.

Which Control Panel application should you use?

- A. System
- B. Credential Manager
- C. Work Folders
- D. Network and Sharing Center
- E. Power Options
- F. RemoteApp and Desktop Connections
- G. Sync Center
- H. Phone and Modem

Correct Answer: D

Section: Configure Networking

Explanation

Explanation/Reference:

References: <https://www.online-tech-tips.com/windows-7/network-and-sharing-center-overview/>

QUESTION 80

You are setting up a test environment and configuring a Windows 10 Enterprise computer. The test environment uses trunk ports.

The network department wants to use tagging to differentiate the networks.

You need to modify the settings of the computer so that it uses network 81.

Which network setting should you configure?

- A. Flow Control
- B. VLAN ID
- C. Receive Side Scaling
- D. Network Address



Correct Answer: B

Section: Configure Networking

Explanation

Explanation/Reference:

References: https://www.startech.com/faq/networking_VLAN_tagging

QUESTION 81

A company has 100 Windows 10 Enterprise client computers.

You need to assign static IPv6 addresses to the client computers.

Which Windows PowerShell cmdlet should you run?

- A. **Set-NetIPAddress**
- B. **Set-NetIPInterface**
- C. **Set-NetTCPSetting**
- D. **Set-NetIPv6Protocol**

Correct Answer: A

Section: Configure Networking**Explanation****Explanation/Reference:****QUESTION 82**

A company has 100 client computers that run Windows 10 Enterprise.

A new company policy requires that all client computers have static IPv6 addresses.

You need to assign static IPv6 addresses to the client computers.

Which Network Shell (netsh) command should you run?

- A. **add address**
- B. **set interface**
- C. **set global**
- D. **set address**

Correct Answer: A

Section: Configure Networking**Explanation****Explanation/Reference:**

Explanation:

The add address Network Shell (netsh) command adds an IPv6 address to a specified interface.

References: [https://technet.microsoft.com/en-gb/library/cc740203\(v=ws.10\).aspx#BKMK_3](https://technet.microsoft.com/en-gb/library/cc740203(v=ws.10).aspx#BKMK_3)

QUESTION 83

A company has 10 portable client computers that run Windows 10 Enterprise.

The portable client computers have the network connections described in the following table.

Network name	Connection type	Network profile
CorpWired	Wired	Private
CorpWifi	Wireless	Public
HotSpot	Public hotspot	Public

None of the computers can discover other computers or devices, regardless of which connection they use.

You need to configure the connections so that the computers can discover other computers or devices only while connected to the CorpWired or CorpWifi connections.

What should you do on the client computers?

- A. For the CorpWifi connection, select Yes, turn on sharing and connect to devices.
- B. Turn on network discovery for the Public profile.
- C. Change the CorpWired connection to public. Turn on network discovery for the Public profile. For the HotSpot connection, select No, don't turn on sharing or connect to devices.
- D. For the CorpWired connection, select Yes, turn on sharing and connect to devices.
- E. Turn on network discovery for the Private profile.

Correct Answer: C

Section: Configure Networking

Explanation

Explanation/Reference:

Explanation:

Of the answers given, this is the only single answer that meets the requirements.

Network discovery is a network setting that affects whether your computer can see (find) other computers and devices on the network and whether other computers on the network can see your computer. By default, Windows Firewall blocks network discovery, but you can enable it.

When we change the CorpWired connection to public, all networks will be in the Public profile. Enabling network discovery for the Public profile will enable the computers to see other computers on each network (including HotSpot).

To prevent network discovery on the HotSpot network, we can select No, don't turn on sharing or connect to devices for that network. This will disable Network discovery for the computer's connection to the HotSpot network.

QUESTION 84

A company has client computers that run Windows 10.

The client computer systems frequently use IPSec tunnels to securely transmit data.

You need to configure the IPSec tunnels to use 256-bit encryption keys.

Which encryption type should you use?

- A. 3DES
- B. DES
- C. RSA
- D. AES

Correct Answer: D

Section: Configure Networking

Explanation

Explanation/Reference:

Explanation:

IPSec tunnels can be encrypted by 256-bit AES.

L2TP/IPsec allows multiprotocol traffic to be encrypted and then sent over any medium that supports point-to-point datagram delivery, such as IP or Asynchronous Transfer Mode (ATM).

The L2TP message is encrypted with one of the following protocols by using encryption keys generated from the IKE negotiation process: Advanced Encryption Standard (AES) 256, AES 192, AES 128, and 3DES encryption algorithms.

QUESTION 85

Your network contains an Active Directory domain. The domain contains 100 Windows 10 client computers. All of the computers secure all connections to computers on the internal network by using IPSec.

The network contains a server that runs a legacy application.

The server does NOT support IPSec.

You need to ensure that some of the Windows 10 computers can connect to the legacy server. The solution must ensure that all other connections are secured by using IPSec.

What should you do?

- A. Modify the settings of the Domain Profile.
- B. Create a connection security rule.
- C. Create an inbound firewall rule.
- D. Modify the settings of the Private Profile.

Correct Answer: A

Section: Configure Networking

Explanation

Explanation/Reference:

Explanation:

A firewall profile is a way of grouping settings, such as firewall rules and connection security rules, which are applied to the computer depending on where the computer is connected. On computers running this version of Windows, there are three profiles for Windows Firewall with Advanced Security: Domain, Private, and Public.

The Domain profile is applied to a network adapter when it is connected to a network on which it can detect a domain controller of the domain to which the computer is joined.

References: [https://docs.microsoft.com/en-us/previous-versions/windows/it-pro/windows-server-2008-R2-and-2008/dd448531\(v=ws.10\)](https://docs.microsoft.com/en-us/previous-versions/windows/it-pro/windows-server-2008-R2-and-2008/dd448531(v=ws.10))

QUESTION 86

You administer Windows 10 devices for an organization. All devices are joined to the domain contoso.com. All network printers are managed in the domain. You have a group named Printer Administrators. You grant this group permissions to manage all printer settings. You add all mobile users to the Printer Administrators group. Each office locations has Web Services for Devices (WSD) printers available.

Managers report that network printers are not available when they move between office locations. Managers must be able to use printers in each office location.

You need to troubleshoot the manager's computer for printing issues.

Which three actions should you perform? Each correct answer is part of the solution. (Choose three.)

NOTE: Each correct selection is worth one point.

- A. Ensure that the network type is set to domain.
- B. Ensure that the network type is set to public.
- C. Update the Printing Preferences settings.
- D. Ensure that File and Printer Sharing is turned on.
- E. Ensure that Network Discovery is turned on.



Correct Answer: ADE

Section: Configure Networking

Explanation

Explanation/Reference:

QUESTION 87

You are the network administrator for Contoso, Ltd. Many users have Windows 10 Enterprise laptops, and your IT department configures all of them to use BitLocker on all fixed drives.

Many users carry sensitive corporate data on their USB drives.

You need to enable BitLocker for these USB drives.

Which key protector option should you use?

- A. a smartcard
- B. a startup key
- C. TPM+PIN
- D. TPM+Password

Correct Answer: A

Section: Configure Storage

Explanation

Explanation/Reference:

Explanation:

You have two options. You can choose Password (not TPM+Password) or Smartcard.

References: <https://technet.microsoft.com/en-us/library/ff404223.aspx>

QUESTION 88

You purchase a new Windows 10 Enterprise desktop computer. You have six external USB hard drives.

You want to create a single volume by using the six USB drives. You want the volume to be expandable, portable, and resilient in the event of simultaneous failure of two USB hard drives.

You need to create the required volume.

What should you do?

- A. From Control Panel, create a new Storage Space across 6 USB hard drives. Set resiliency type to **Parity**.
- B. From Disk Management, create a new striped volume.
- C. From Disk Management, create a new spanned volume.
- D. From Control Panel, create a new Storage Space across 6 USB hard drives. Set resiliency type to **Three-way mirror**.

Correct Answer: D

Section: Configure Storage

Explanation

Explanation/Reference:

Explanation:

Resiliency

Storage Spaces supports four types of resiliency:

Simple: A simple storage space writes one copy of your data and does not protect you from driver failures. This option requires, at least, one drive, and each new additional drive adds another point of failure.

Two-way mirror: This option writes two copies of your data on the drives, which can protect your data from a single driver failure. Two-way mirror requires a least two drives. Three-way mirror: This option works similar to the two-way mirror, but it writes three copies of your data on the drives, which will help you to protect your data from two simultaneous drive failures. Three-way mirror requires, at least, three drives.

Parity: Similar to the standard RAID 5 technology, Parity for a storage space writes your data with parity information on the available driver to help you protect your data from a single driver failure. This option requires a least three drivers

QUESTION 89

You have Windows 10 Enterprise computer at home. You have purchased a new 4-terabyte external drive and attached it to the computer.

You want to create a 2.5-terabyte virtual hard disk (VHD) and store it on the new external drive. You also want to allocate disk space for the virtual disk as needed.

You need to create the required virtual disk.

What should you do?

- A. From Disk Management, select create VHD. For virtual hard disk format, select VHD. For virtual hard type, select Fixed Size.
- B. From Disk Management, select create VHD. For virtual hard disk format, select VHDX. For virtual hard type, select Dynamically.
- C. From Disk Management, select create VHD. For virtual hard disk format, select VHD. For virtual hard type, select Dynamically.
- D. From Disk Management, select create VHD. For virtual hard disk format, select VHDX. For virtual hard type, select Fixed Size.

Correct Answer: B

Section: Configure Storage

Explanation

Explanation/Reference:

QUESTION 90

You have a computer that has the disk configuration shown in the following table:

Disk controller	Size	Purpose
0	128 GB	System and boot
1	256 GB	Not applicable
2	256 GB	Not applicable
3	256 GB	Not applicable

You need to configure a storage space that will provide data redundancy if a disk fails.

The solution must minimize impact if a disk fails.

Which resiliency type should you choose?

- A. three-way mirror
- B. two-way mirror
- C. simple
- D. parity

Correct Answer: B

Section: Configure Storage**Explanation****Explanation/Reference:**

References:

https://social.technet.microsoft.com/wiki/contents/articles/11382.storage-spaces-frequently-asked-questionsfaq.aspx#What_types_of_drives_can_I_use_with_Storage_Spaces

QUESTION 91

You have a computer named Computer1 that runs Windows 10 Enterprise. You add a 1 TB hard drive and create a new volume that has the drive letter D.

You need to limit the amount of space that each user can consume on D: to 200 GB. Members of the Administrators group should have no limit.

Which three actions should you perform? Each correct answer presents part of the solution.

- A. Run fsutil quota violations D:.
- B. Enable the Deny disk space to users exceeding quota limit setting.
- C. Enable the Enable Quota Management setting.
- D. Set a default quota limit.
- E. Run convert D: /FS:NTFS.
- F. Add a quota entry.



Correct Answer: BCD

Section: Configure Storage**Explanation****Explanation/Reference:**

Explanation:

To limit the amount of space that each user can consume, you should enable the Enable Quota Management setting, and then enter the appropriate values in the Limit Disk Space To text box and the Set Warning Level To text box, and then select the Deny Disk Space To Users Exceeding Quota Limit check box to enforce identical quota limits for all users.

References:

<https://www.windowcentral.com/how-configure-disk-quota-windows-10>

<https://technet.microsoft.com/en-us/library/cc788136.aspx> <https://technet.microsoft.com/en-us/library/bb490885.aspx> **QUESTION 92**

A company has Windows 10 Enterprise client computers. The company uses Windows BitLocker Drive Encryption and BitLocker Network Unlock on all client computers.

You need to collect information about BitLocker Network Unlock status.

Which command should you run?

- A. Run the **BitLockerWizard** command.
- B. Run the **manage-bde** command.
- C. Run the **BdeHdCfg** command.
- D. Run the **bitsadmin** command.

Correct Answer: B

Section: Configure Storage

Explanation

Explanation/Reference:

References: [https://docs.microsoft.com/en-us/previous-versions/windows/it-pro/windows-7/dd875513\(v=ws.10\)#BKMK_status](https://docs.microsoft.com/en-us/previous-versions/windows/it-pro/windows-7/dd875513(v=ws.10)#BKMK_status)

QUESTION 93

You are the system administrator for a company. You have a developer that uses Storage Spaces on their Windows 10 device. The developer has a storage pool that contains five drives. You add four drives to the existing pool on the developer's computer.

You need to ensure that the developer can quickly use the space of the new drives.

Which command or Windows PowerShell cmdlet should you run?

- A. **Optimize-StoragePool**
- B. **Enable-StorageHighAvailability**
- C. **fsutil**
- D. **defrag**
- E. **diskpart**

Correct Answer: A

Section: Configure Storage

Explanation

Explanation/Reference:

References: <https://docs.microsoft.com/en-us/powershell/module/storage/optimize-storagepool?view=win10-ps>

QUESTION 94

Your network contains an Active Directory domain. The domain contains Windows 10 Enterprise client computers.

Users frequently use USB drives to store sensitive files that are used on multiple computers.

Your corporate security policy states that all removable storage devices such as USB data drives, must be encrypted.

You need to ensure that if a user forgets the password for a USB disk that is encrypted by using BitLocker To Go, the user can resolve the issue themselves.

What should you do?

- A. Instruct the user to open BitLocker Drive Encryption, select Back up recovery key, and then select Save to a file.
- B. From an elevated command prompt, run **Manage-BDE -ForceRecovery**.
- C. For each computer, create a USB startup key.
- D. Implement the BitLocker Network Unlock feature.
- E. Publish a data recovery agent certificate by using a Group Policy object (GPO).
- F. Instruct the user to open **BitLocker Drive Encryption**, select **Back up recovery key**, and then select **Save to your Microsoft account**.

Correct Answer: A

Section: Configure Storage

Explanation

Explanation/Reference:

Explanation:

You can save a copy of the BitLocker recovery key to a file, a USB flash drive, or printed a hard copy.

References: <https://support.microsoft.com/en-za/help/17133/windows-8-bitlocker-recovery-keys-frequently-asked-questions>

QUESTION 95

A Windows 10 Enterprise client computer has two hard disk drives: a system drive and a data drive.

You are preparing to back up the computer prior to installing a developing software product. You have the following requirements: ▪

The system disk that is part of the backup must be mountable from within Windows.

- The system disk that is part of the backup must be bootable.
 - The backup must be viable to restore in the event of a hard disk failure. ▪
- The backup must contain data from both hard disk drives.

You need to select a backup method.

Which method should you use?

- A. system image
- B. storage pool
- C. File History
- D. system repair disk

Correct Answer: A

Section: Configure Storage**Explanation****Explanation/Reference:**

References: <https://www.howtogeek.com/239312/how-to-restore-system-image-backups-on-windows-7-8-and-10/>

QUESTION 96

You are the network administrator for Contoso, Ltd. Many users have Windows 10 Enterprise laptops, and your IT department configures all of them to use BitLocker on all fixed drives.

Many users carry sensitive corporate data on their USB drives.

You need to enable BitLocker for these USB drives.

Which key protector option should you use?

- A. Automatic Unlock
- B. TPM+PIN
- C. a password
- D. a startup key
- E. a .tmp file
- F. TPM+Password



Correct Answer: C

Section: Configure Storage**Explanation****Explanation/Reference:**

References: <https://technet.microsoft.com/en-us/library/ff404223.aspx>

QUESTION 97**DRAG DROP**

A Windows 10 enterprise computer has an external hard drive that contains selected folders that are encrypted by using EFS. The computer's internal hard drive fails.

You have a backup of the certificate and key.



<https://vceplus.com/>

You need to provide access to the encrypted folders on the external hard drive.

Which four actions should you perform in sequence? To answer, move the appropriate four actions from the list of actions to the answer area and arrange them in the correct order.

Select and Place:



Actions

Start `certmgr.msc`, select **Trusted Publishers**, and select **Import**.

Enter the password you used to create the backup certificate and key.

Start `certmgr.msc`, select **Personal**, and select **Import**.

Select **Place all certificates in the following store**. Select **Personal**.

Browse to the location of the certificate and key.

Select **Place all certificates in the following store**. Select **Trusted Publishers**.

Answer Area



Correct Answer:

Actions

Start `certmgr.msc`, select **Trusted Publishers**, and select **Import**.

Select **Place all certificates in the following store**. Select **Trusted Publishers**.

Answer Area

Start `certmgr.msc`, select **Personal**, and select **Import**.

Browse to the location of the certificate and key.

Enter the password you used to create the backup certificate and key.

Select **Place all certificates in the following store**. Select **Personal**.



Section: Configure Storage
Explanation Explanation/Reference:

QUESTION 98

You have a Windows 10 Enterprise client Computer.

www.vceplus.com - VCE Exam Simulator - Download A+ VCE (latest) free Open VCE Exams - VCE to PDF Converter - PDF Online

The computer uses BitLocker Drive Encryption (BitLocker) on a fixed disk that only stores data.

You need to prevent any data from being written to the fixed disk.

What should you do?

- A. Run the **Add-BitLockerKeyProtector** cmdlet.
- B. Run the **manage-bde** command and specify the **-pause** switch.
- C. Run the **Lock-BitLocker** cmdlet.
- D. Run the **manage-bde** command and specify the **-off** switch.

Correct Answer: C

Section: Configure Storage

Explanation

Explanation/Reference:

QUESTION 99

You have Windows 10 Enterprise computers.

Microsoft BitLocker Administration and Monitoring (MBAM) is deployed on your network on a server named MBAM1.

Company policy requires that within 2 hours of being started, computers that have the MBAM client installed prompt users to enable BitLocker.

You need to make changes to the Configure MBAM Services Group Policy settings.

Which two actions should you perform? Each correct answer presents part of the solution.

NOTE: Each correct selection is worth one point.

- A. Set **Select Bitlocker Recovery Information to store** to **Recovery password and key package**.
- B. Set **Enter status reporting frequency (in minutes)** to **120**.
- C. Set **MBAM Status reporting endpoint** to **MBAM1**.
- D. Set **Enter client checking status frequency (in minutes)** to **120**.
- E. Set **Select Bitlocker Recovery Information to store** to **Recovery password only**.
- F. Set **MBAM Recovery and Hardware service endpoint** to **MBAM1**.

Correct Answer: DF

Section: Configure Storage

Explanation

Explanation/Reference:

References:

http://www.projectleadership.net/blogs_details.php?id=3519

QUESTION 100

You have a computer named Computer1 that runs Windows 10 Enterprise. You need to ensure that you can access all local files stored on Computer1 from onedrive.com.

What should you do?

- A. Modify the Microsoft OneDrive settings on Computer1.
- B. From the Settings app, modify the Storage options from the System settings.
- C. Go to onedrive.com, select **Options**, and then modify the storage plan.
- D. From Sync center on Computer1, set up a new sync partnership.

Correct Answer: A

Section: Configure Storage

Explanation

Explanation/Reference:

References:

<https://support.office.com/en-us/article/fetch-files-on-your-pc-70761550-519c-4d45-b780-5a613b2f8822>

QUESTION 101

You purchase a new Windows 10 Enterprise desktop computer. You have four external USB hard drives.

You want to create a single volume by using the four USB drives. You want the volume to be expandable, portable and resilient in the event of failure of an individual USB hard drive.

You need to create the required volume.

What should you do?

- A. From Control Panel, create a new Storage Space across 4 USB hard drives. Set resiliency type to Three-way mirror.
- B. From Control Panel, create a new Storage Space across 4 USB hard drives. Set resiliency type to Parity.
- C. From Disk Management, create a new spanned volume.
- D. From Disk Management, create a new striped volume.

Correct Answer: B

Section: Configure Storage

Explanation

Explanation/Reference:

Explanation:

Storage Spaces can combine multiple hard drives into a single virtual drive. To create a storage space, you'll have to connect two or more additional internal or external drives to your computer to create a storage pool. You can also specify an arbitrarily large logical size. When your existing drive begins to fill up and nears the physical limit, Windows will display a notification in the Action Center, prompting you to add additional physical storage space. Selecting the Parity resiliency type allows Windows to store parity information with the data, thereby protecting you from a single drive failure.

References: <http://www.howtogeek.com/109380/how-to-use-windows-8s-storage-spaces-to-mirror-combine-drives/> <https://technet.microsoft.com/en-us/library/cc772180.aspx> <https://technet.microsoft.com/en-us/library/cc732422.aspx>

QUESTION 102

You support Windows 10 Enterprise computers that are members of an Active Directory domain. Recently, several domain user accounts have been configured with super-mandatory user profiles.

A user reports that she has lost all of her personal data after a computer restart.

You need to configure the user's computer to prevent possible user data loss in the future.

What should you do?

- A. Remove the .man extension from the user profile name.
- B. Configure Folder Redirection by using the domain group policy.
- C. Configure the user's documents library to include folders from network shares.
- D. Add the .dat extension to the user profile name.

Correct Answer: B

Section: Configure Storage

Explanation

Explanation/Reference:

Explanation:

Folder Redirection allows administrators to redirect the path of a folder to a new location, which can be a folder on the local computer or a directory on a network file share. Users can then work with documents on a server as if the documents were based on a local drive, but are available to the user from any computer on the network. Folder Redirection can be found under Windows Settings in the console tree by editing domain-based Group Policy via the Group Policy Management Console (GPMC).

References:

<https://technet.microsoft.com/en-gb/library/cc732275.aspx> <http://windowsitpro.com/systems-management/inside-user-profiles>

QUESTION 103

You have a client Windows 10 Enterprise computer. The computer is joined to an Active Directory domain. The computer does not have a Trusted Platform Module (TPM) chip installed.

You need to configure BitLocker Drive Encryption (BitLocker) on the operating system drive.

Which Group Policy object (GPO) setting should you configure?

- A. Allow access to BitLocker-protected fixed data drives from earlier version of Windows.
- B. Require additional authentication at startup.
- C. Allow network unlock at startup.
- D. Configure use of hardware-based encryption for operating system drives.

Correct Answer: B

Section: Configure Storage

Explanation

Explanation/Reference:

Explanation:

To make use of BitLocker on a drive without TPM, you should run the gpedit.msc command. You must then access the Require additional authentication at startup setting by navigating to Computer Configuration\Administrative Templates\Windows Components\Bit Locker Drive Encryption\Operating System Drives under Local Computer Policy. You can now enable the feature and tick the Allow BitLocker without a compatible TPM checkbox.

References:

<http://www.howtogeek.com/howto/6229/how-to-use-bitlocker-on-drives-without-tpm/> https://technet.microsoft.com/en-us/library/jj679890.aspx#BKMK_depopt4

QUESTION 104

You administer Windows 10 Enterprise desktop computers that are members of an Active Directory domain.

You want to create an archived copy of user profiles that are stored on the desktops. You create a standard domain user account to run a backup task.

You need to grant the backup task user account access to the user profiles.

What should you do?

- A. Add the backup task account to the Remote Management Users group on a domain controller.
- B. Add the backup task account to the Backup Operators group on every computer.
- C. Add the backup task account to the Backup Operators group on a domain controller.
- D. Set the backup task account as NTFS owner on all the profiles.

Correct Answer: B

Section: Configure Storage

Explanation

www.vceplus.com - VCE Exam Simulator - Download A+ VCE (latest) free Open VCE Exams - VCE to PDF Converter - PDF Online

Explanation/Reference:

Explanation:

The Local Backup Operators group can back up and restore files on a computer, regardless of any permission that protect those files.

References:

<https://technet.microsoft.com/en-us/library/cc771990.aspx> <https://technet.microsoft.com/en-us/library/dn579255.aspx> [https://technet.microsoft.com/en-us/library/cc779180\(v=ws.10\).aspx](https://technet.microsoft.com/en-us/library/cc779180(v=ws.10).aspx)

QUESTION 105

You administer a group of 10 client computers that run Windows 10. The client computers are members of a local workgroup. Employees log on to the client computers by using their Microsoft accounts.

The company plans to use Windows BitLocker Drive Encryption. You need to back up the BitLocker recovery key.

Which two options can you use? (Each correct answer presents a complete solution. Choose two.)

- A. Save the recovery key to a file on the BitLocker-encrypted drive.
- B. Save the recovery key in the Credential Store.
- C. Save the recovery key to OneDrive.
- D. Print the recovery key.



Correct Answer: CD

Section: Configure Storage

Explanation

Explanation/Reference:

Explanation:

C: The BitLocker recovery key is saved in your OneDrive account in the cloud.

D: The recovery key can be printed.

References:

<https://support.microsoft.com/en-us/help/17133/windows-8-bitlocker-recovery-keys-frequently-asked-questions>

QUESTION 106

You have a desktop computer that runs Windows 10 Enterprise. You add three new 3-terabyte disks. You need to create a new 9-terabyte volume.

Which two actions should you perform? (Each correct answer presents part of the solution. Choose two.)

- A. From Disk Management, create a new spanned volume.
- B. From Disk Management, convert all of the 3-terabyte disks to GPT.
- C. From PowerShell, run the **New-VirtualDisk** cmdlet.
- D. From Disk Management, bring all disks offline.

- E. From Diskpart, run the **Convert MBR** command.
- F. From PowerShell, run the **Add-PhysicalDisk** cmdlet.

Correct Answer: AB

Section: Configure Storage

Explanation

Explanation/Reference:

Explanation:

B: GPT disks can grow to a very large size. The maximum partition (and disk) size is a function of the operating system version. Windows XP and the original release of Windows Server 2003 have a limit of 2TB per physical disk, including all partitions. For Windows Server 2003 SP1, Windows XP x64 edition, and later versions, the maximum raw partition of 18 exabytes can be supported.

A: A spanned volume is a dynamic volume consisting of disk space on more than one physical disk. If a simple volume is not a system volume or boot volume, you can extend it across additional disks to create a spanned volume, or you can create a spanned volume in unallocated space on a dynamic disk. You can make a spanned volume of GPT disks.

References:

[https://msdn.microsoft.com/en-us/library/windows/hardware/dn640535\(v=vs.85\).aspx#gpt_faq_how_big](https://msdn.microsoft.com/en-us/library/windows/hardware/dn640535(v=vs.85).aspx#gpt_faq_how_big) <http://msdn.microsoft.com/en-us/library/windows/hardware/gg463524.aspx>

QUESTION 107

You administer computers that run Windows 10 Enterprise and are members of an Active Directory domain. Some volumes on the computers are encrypted with BitLocker.

The BitLocker recovery passwords are stored in Active Directory. A user forgets the BitLocker password to local drive E: and is unable to access the protected volume.

You need to provide a BitLocker recovery key to unlock the protected volume.

Which two actions should you perform? (Each correct answer presents part of the solution. Choose two.)

- A. Ask the user to run the **manage-bde-protectors-disable e:** command.
- B. Ask the user for his or her logon name.
- C. Ask the user to run the **manage-bde-unlock E:-pw** command.
- D. Ask the user for his or her computer name.
- E. Ask the user for a recovery key ID for the protected drive.

Correct Answer: CD

Section: Configure Storage

Explanation

Explanation/Reference:

Explanation:

D: To view the recovery passwords for a computer you would need the computer name:

In Active Directory Users and Computers, locate and then click the container in which the computer is located.

Right-click the computer object, and then click Properties.

In the Properties dialog box, click the BitLocker Recovery tab to view the BitLocker recovery passwords that are associated with the particular computer.

C: The Manage-bde: unlock command unlocks a BitLocker-protected drive by using a recovery password or a recovery key.

References:

[https://technet.microsoft.com/en-us/library/dd759200\(v=ws.11\).aspx](https://technet.microsoft.com/en-us/library/dd759200(v=ws.11).aspx)

<http://www.concurrency.com/blog/enable-bitlocker-automatically-save-keys-to-active-directory/> <https://docs.microsoft.com/en-us/windows-server/administration/windows-commands/manage-bde-unlock>

QUESTION 108

Note: This question is part of a series of questions that use the same or similar answer choices. An answer choice may be correct for more than one question in the series. Each question is independent of the other questions in this series. Information and details provided in a question apply only to that question.

You have a computer that runs Windows 10 and is used by 10 users. The computer is joined to an Active Directory domain. Each user has an Active Directory account.

You need to ensure that all of the users can access the files located in one another's libraries.

What should you configure?

- A. Microsoft OneDrive
- B. HomeGroup settings
- C. Encrypting File System (EFS) settings
- D. NTFS permissions
- E. Account policies
- F. Share permissions
- G. Software restriction policies
- H. Application control policies

Correct Answer: D

Section: Manage Data Access and Protection

Explanation

Explanation/Reference:

References: <https://www.windowscentral.com/how-take-ownership-files-and-folders-windows-10>

10

QUESTION 109

A company has an Active Directory Domain Services (AD DS) domain. All client computers run Windows 10 Enterprise and are joined to the domain.

You have the following requirements:

- Ensure that files in shared network folders are available offline.
- Maximize efficiency for users who connect to shared network folders from a mobile device.

You need to configure Group Policy settings to meet the requirements.

What should you do first?

- A. Enable the Enable file synchronization on costed networks policy setting.
- B. Enable the Synchronize all offline files when logging on policy settings.
- C. Enable and configure the Configure slow-link mode policy setting.
- D. Enable and configure the Specify administratively assigned Offline Files policy setting.

Correct Answer: C

Section: Manage Data Access and Protection

Explanation

Explanation/Reference:

References:

<https://technet.microsoft.com/en-us/library/hh968298.aspx>

**QUESTION 110**

You manage a client Windows 10 Enterprise computer named Computer1.

You have a OneDrive synchronized folder that contains .pdf files.

You need to ensure that you can restore previous versions of the .pdf files.

What should you do?

- A. Enable File History.
- B. Configure System Restore.
- C. Configure Computer1 as a trusted PC.
- D. Enable Sync your settings on Computer1.

Correct Answer: A

Section: Manage Data Access and Protection

Explanation

Explanation/Reference:

Explanation:

File History regularly backs up versions of your files in the Documents, Music, Pictures, Videos, and Desktop folders and the OneDrive files available offline on your PC. Over time, you'll have a complete history of your files. If the originals are lost, damaged, or deleted, you can restore them.

You can also browse and restore different versions of your files. For example, if you want to restore an older version of a file (even if it wasn't deleted or lost), you can browse through a timeline, select the version you want, and restore it.

QUESTION 111

You have a laptop that is a member of a workgroup. The laptop does not have a Trusted Platform Module (TPM) chip.

You plan to enable BitLocker Drive Encryption (BitLocker) for the operating system drive.

What are two methods that you can use to unlock the drive when the laptop restarts? Each correct answer presents a complete solution.

- A. a password
- B. a Near Field Communication (NFC)-enabled portable device
- C. a USB drive
- D. a user account
- E. Network Unlock

Correct Answer: AC

Section: Manage Data Access and Protection

Explanation

Explanation/Reference:

References: <http://www.howtogeek.com/howto/6229/how-to-use-bitlocker-on-drives-without-tpm/>

QUESTION 112

Note: This question is part of a series of questions that use the same or similar answer choices. An answer choice may be correct for more than one question in the series. Each question is independent of the other questions in this series. Information and details in a question apply only to that question.

On the corporate network, you have an Active Directory user account. The domain contains a sync share named Share1.

You have a personal computer that runs Windows 10. The computer is a member of a workgroup.

You need to access the files in Share1.

Which Control Panel application should you use?

- A. Phone and Modem
- B. Network and Sharing Center

- C. RemoteApp and Desktop Connections
- D. Power Options
- E. System
- F. Sync Center
- G. Credential Manager
- H. Work Folders

Correct Answer: H

Section: Manage Data Access and Protection

Explanation

Explanation/Reference:

References:

<http://thesolving.com/storage/how-to-set-up-a-work-folders-sync-share-on-windows-server-2012-r2/> <https://support.microsoft.com/en-za/help/27903/windows-10-work-folders-faq>

QUESTION 113

You administer Windows 10 Enterprise client computers in your company network. A computer that is used by non-administrator users has a directory named C:\Folder1.

A shared collection of Microsoft Excel files is stored in the C:\Folder1 directory, with non-administrator users being granted modify permissions to the directory.

You discover that some files have been incorrectly modified by a user.

You need to determine which users are making changes to the files in the directory.

Which two actions should you perform? Each correct answer presents part of the solution.

NOTE: Each correct selection is worth one point.

- A. Set local policy: Computer Configuration\Windows Settings\Security Settings\Local Policies\Audit Policy\Audit object access to **Failure**.
- B. From the Auditing Entry for Folder1, set the Principal to **Everyone**, and then set the **Type** to **Failure** for the Modify permission.
- C. From the Auditing Entry for Folder1, set the Principal to **Guests**, and then set the **Type** to **Success** for the Modify permission.
- D. Set local policy: Computer Configuration\Windows Settings\Security Settings\Local Policies\Audit Policy\Audit object access to **Success**.
- E. From the Auditing Entry for Folder1, set the Principal to **Guests**, and then set the **Type** to **Failure** for the Modify permission.
- F. From the Auditing Entry for Folder, set the Principal to **Everyone**, and then set the **Type** to **Success** for the Modify permission.

Correct Answer: DF

Section: Manage Data Access and Protection

Explanation

Explanation/Reference:

QUESTION 114

You provide IT support for a small startup company.

The company wants users to have Read and Write permissions to the company's shared folder. The network consists of a workgroup that uses Windows 10 Enterprise computers. You add each user to a group named NetworkUsers.

You need to grant permissions to the share. You have the following requirements:

- All users must have Read and Write access to existing files.
- Any new files must allow the creator to modify the new file's permissions.

Which two actions should you take? Each correct answer presents part of the solution.

- A. Grant Modify permissions to the NetworkUsers group on the shared folder.
- B. Grant Full Control permissions to the Domain Admins group on the shared folder.
- C. Grant List and Execute permissions to the NetworkUsers group on the shared folder.
- D. Grant Full Control permissions to the Creator Owner group on the shared folder.

Correct Answer: AD

Section: Manage Data Access and Protection

Explanation

Explanation/Reference:

QUESTION 115

A company has Windows 10 Enterprise client computers. Users store data files in their user profile libraries.

You need to ensure that you can restore data files to any date while minimizing system overhead.

Which two actions should you perform? Each answer presents part of the solution.

NOTE: Each correct selection is worth one point.

- A. Turn on File History.
- B. Configure Windows 7 File Recovery.
- C. Configure settings to save copies of files daily.
- D. Enable Storage Spaces.

Correct Answer: AC

Section: Manage Data Access and Protection
Explanation

Explanation/Reference:

References: <http://www.pcworld.com/article/2974385/windows/how-to-use-windows-10s-file-history-backup-feature.html> **QUESTION 116**

Note: This question is part of a series of questions that use the same or similar answer choices. An answer choice may be correct for more than one question in the series. Each question is independent of the other questions in this series. Information and details provided in a question apply only to that question.

You have five computers that run Windows 10. You are the only user who uses the computers. All of the computers are members of the same domain.

You need to ensure that you can access any file on any of the computers over the Internet.

What should you configure?

- A. account policies
- B. share permissions
- C. application control policies
- D. NTFS permissions
- E. HomeGroup settings
- F. software restriction policies
- G. Encrypting File System (EFS) settings
- H. Microsoft OneDrive



Correct Answer: H

Section: Manage Data Access and Protection
Explanation

Explanation/Reference:

QUESTION 117

You administer a Windows 10 Enterprise computer.

The computer is configured to encrypt several folders by using a self-signed Encrypted File System (EFS) certificate.

You need to make a backup copy of the encryption keys.

What should you do?

- A. Open the Certificates console and connect to the user account certificates. Export the self-signed EFS certificate from the Trusted People folder to a Canonical Encoding Rules (CER) file.

- B. Open the Certificates console and connect to the user account certificates. Find the personal self-signed EFS certificate and export it to a Personal Information Exchange (PFX) file.
- C. Open the Certificates console and connect to the user account certificates. Export the personal self-signed EFS certificate from the Trusted Root Certification Authority folder to a Personal Information Exchange (PFX) file.
- D. Open the Certificates console and connect to the computer account certificates. Export the self-signed EFS certificate from the Trusted People folder to a Canonical Encoding Rules(CER) file.

Correct Answer: B

Section: Manage Data Access and Protection

Explanation

Explanation/Reference:

QUESTION 118

HOTSPOT

You are a consultant at a small company. The company's employees use Windows 10 Enterprise computers.

An employee wants to share his printer with only selected users.

You need to enable the correct settings.

Which two tab settings should you modify? To answer, select the appropriate tab settings in the answer area.

Hot Area:


Brother Color Leg Type1 Class Driver Properties
X

General

Sharing


Ports

Advanced

Color Management

Security

Device Settings



Brother Color Leg Type1 Class Driver

Location:

Comments:



Model: Brother Color Leg Type1 Class Driver

Features

Color: Yes

Double-sided: No

Staple: No

Speed: Unknown

Maximum resolution: 600 dpi

Paper available:

Letter

Preferences...

Print Test Page

OK

Cancel

Apply

www.vceplus.com - VCE Exam Simulator - Download A+ VCE (latest) free Open VCE Exams - VCE to PDF Converter - PDF Online

Correct Answer:




Brother Color Leg Type1 Class Driver Properties
X


General Sharing Ports Advanced Color Management Security Device Settings



Brother Color Leg Type1 Class Driver

Location:

Comments:



Model:

Brother Color Leg Type1 Class Driver

Features
 Color: Yes
 Double-sided: No
 Staple: No
 Speed: Unknown
 Maximum resolution: 600 dpi

Paper available:

Letter

^

v

Preferences...

Print Test Page

OK

Cancel

Apply

Section: Manage Data Access and Protection
Explanation

Explanation/Reference:

QUESTION 119

A company has Windows 10 Enterprise client computers. All user data is stored locally. Each data file has a system access control list (SACL).

You need to ensure that an event is generated when a user modifies a local file.

Which audit policy setting should you configure?

- A. Audit process tracking
- B. Audit object access
- C. Audit policy change
- D. Audit privilege use

Correct Answer: B

Section: Manage Data Access and Protection
Explanation



Explanation/Reference:

QUESTION 120

Note: This question is part of a series of questions that present the same scenario. Each question in the series contains a unique solution that might meet the stated goals. Some question sets might have more than one correct solution, while others might not have a correct solution.

After you answer a question in this section, you will NOT be able to return to it. As a result, these questions will not appear in the review screen.

Your company uses Microsoft Office 365.

You need to ensure that users are prompted to label and classify documents while they edit documents.

Solution: You configure an Office 365 data loss prevention (DLP) policy.

Does the solution meet the goal?

- A. Yes
- B. No

Correct Answer: B

Section: Manage Data Access and Protection**Explanation****Explanation/Reference:**

References:

<https://docs.microsoft.com/en-us/information-protection/deploy-use/configure-policy>

QUESTION 121

Note: This question is part of a series of questions that use the same or similar answer choices. An answer choice may be correct for more than one question in the series. Each question is independent of the other questions in this series. Information and details provided in a question apply only to that question.

You have five computers that run Windows 10. The computers are used for testing and cannot connect to the Internet. You are the only user who uses the computers. All of the computers are members of the same domain.

One of the computers contains a folder named Folder1.

You need to ensure that you can access Folder1 from any of the computers.

What should you configure?

- A. HomeGroup settings
- B. OneDrive for Business
- C. NTFS permissions
- D. Encrypting File System (EFS) settings
- E. share permissions
- F. application control policies
- G. account policies
- H. software restriction policies

Correct Answer: A

Section: Manage Data Access and Protection**Explanation****Explanation/Reference:**

References:

<https://www.teamknowhow.com/kit-guide/computing/laptops/dell/inspiron-13-5000/how-to-set-up-file-sharing-on-windows-10>

QUESTION 122

This question is part of a series of questions that use the same or similar answer choices. An answer choice may be correct for more than one question in the series. Each question is independent of the other questions in this series. Information and details provided in a question apply only to that question.

You have a computer that runs Windows 10 and is used by 10 users. The computer is joined to an Active Directory domain. Each user has an Active Directory account.

You need to ensure that all of the users can access the files located in one another's libraries.

Which two options should you configure? Each correct answer presents a complete solution.

NOTE: Each correct selection is worth one point.

- A. account policies
- B. NTFS permissions
- C. share permissions
- D. application control policies
- E. software restriction policies
- F. Encrypting File System (EFS) settings
- G. OneDrive for Business
- H. HomeGroup settings

Correct Answer: BH

Section: Manage Data Access and Protection

Explanation



Explanation/Reference:

QUESTION 123

You work for a small company that recently upgraded to Windows 10 Enterprise computers.

The HR department stores sensitive data in a folder named Personnel Files.

You need to encrypt this folder only, and no other data.

What are two possible ways to achieve this goal? Each correct answer presents a complete solution.

NOTE: Each correct selection is worth one point.

- A. Use EFS.
- B. Use cipher.exe.
- C. Use BitLocker
- D. Use RFFS.

Correct Answer: AB

Section: Manage Data Access and Protection**Explanation****Explanation/Reference:**

References:

<https://windowsreport.com/encrypt-files-folders-windows-10/> <https://support.microsoft.com/en-us/help/298009/cipher-exe-security-tool-for-the-encrypting-file-system>

QUESTION 124

A company has a main office and several branch offices. The company has an Active Directory Domain Services (AD DS) domain with Windows 10 Enterprise client computers. All printers are deployed to all client computers by using Group Policy.

When a user attempts to print from his portable client computer while at a branch office, the main office printer is set as his default printer.

You need to ensure that a location-specific default printer for each branch office is set for the user. What should you do?

- A. In the Manage Default Printers dialog box, select the **Change my default printer when I change networks** option.
- B. In the Manage Default Printers dialog box, select the **Always use the same printer as my default printer** option.
- C. Create a Group Policy object (GPO) that enables the **Computer location** policy setting.
- D. Create a Group Policy object (GPO) that enables the **Allow Print Spooler to accept client connections** policy settings.

Correct Answer: D

Section: Manage Data Access and Protection**Explanation****Explanation/Reference:**

References:

<https://support.microsoft.com/en-za/help/234270/how-to-use-group-policy-settings-to-control-printers-in-active-directo>

QUESTION 125**DRAG DROP**

You have a computer that runs Windows 10 Enterprise that contains the following folders.



You have a local user named User1. User1 has read and execute permission to Folder1.

You need to ensure that User1 can perform the following tasks:

- Create new files in Folder2.
- Edit all files in Folder3.
- Change the permissions of files in Folder5.

The solution must use the principle of least privilege.

Which permissions should you assign to User1 on each folder? To answer, drag the appropriate permissions to the correct folders. Each permission may be used once, more than once, or not at all. You may need to drag the split bar between panes or scroll to view content.

Select and Place:



Permissions

Full Control
List Folder Contents
Modify
Read
Read & Execute
Write

Answer Area

Folder2:	Permission
Folder3:	Permission
Folder5:	Permission



Correct Answer:

Section: Manage Data Access and Protection

Explanation

Explanation/Reference:

Advanced permissions are detailed permissions that are grouped together to create the standard permissions. The permissions in this question are standard permissions.

Folder2: To create new files in a folder, you need Write permission to the folder. The 'Write' standard permission includes the 'Create files / write data' advanced permission.

Permissions

Answer Area

Folder2:

Folder3:

Folder5:



Folder3: To edit existing files in a folder, you need Modify permission.

Folder5: To change the permissions of files in a folder, you need the 'Change Permissions' advanced permission. The Change Permission advanced permission is in the 'Full Control' standard permission group. Therefore, the answer for Folder5 is Full Control.

References:

<http://windows.microsoft.com/en-gb/windows/before-applying-permissions-file-folder#1TC=windows-7>

QUESTION 126

You have a Windows 10 Enterprise computer.

The computer has a shared folder named C:\Marketing. The shared folder is on an NTFS volume.

The current NTFS and share permissions are configured as follows.

Group name	NTFS permission	Shared folder permission
Everyone	Read and Execute	Read
Marketing	Modify	Full Control

UserA is a member of both the Everyone group and the Marketing group. UserA must access C:\Marketing from across the network. You need to identify the effective permissions of UserA to the C:\Marketing folder.

What permission should you identify?

- A. Full Control
- B. Read and Execute
- C. Read
- D. Modify

Correct Answer: D

Section: Manage Data Access and Protection

Explanation

Explanation/Reference:

Explanation:

UserA is a member of both the Everyone group and the Marketing group and UserA must access C:\Marketing from across the network.

When accessing a file locally, you combine the NTFS permissions granted to your account either directly or by way of group membership. The 'least' restrictive permission is then the permission that applies.

In this question, the NTFS permission is the least restrictive of Read/Execute and Modify... so Modify is the effective permission.

When accessing a folder or file across the network, you combine the effective NTFS permissions (Modify in this case) with the effective Share permissions granted to your account either directly or by way of group membership (Full Control in this case). The 'most' restrictive permission is then the permission that applies.

Modify is more restrictive than Full Control so Modify is the effective permission.

QUESTION 127

At home, you use a Windows 10 desktop computer. At work, you use a Windows 10 laptop that is connected to a corporate network. You use the same Microsoft account to log on to both computers.

You have a folder with some personal documents on your desktop computer. The folder must be available and synced between both computers.

You need to ensure that the latest version of these files is available. What should you do?

- A. Create a folder by using **OneDrive for Windows**. Move all of the personal documents to the new folder.
- B. Move the folder to the **Libraries** folder. Go to **PC Settings**. Under Sync your settings, enable **App settings**.
- C. Right-click the folder and click **Properties**. Under Security, provide **Full Control** for the Microsoft account.
- D. Right-click the folder and select **Share With**, and then select **Homegroup (view and edit)**.

Correct Answer: A

Section: Manage Data Access and Protection

Explanation

Explanation/Reference:

Explanation:

To save a doc you're working on to OneDrive, select a OneDrive folder from the list of save locations. To move files to OneDrive, open File Explorer and then drag them into a OneDrive folder.

Note: OneDrive (previously SkyDrive, Windows Live SkyDrive, and Windows Live Folders) is a file hosting service that allows users to sync files and later access them from a web browser or mobile device. Users can share files publicly or with their contacts; publicly shared files do not require a Microsoft account to access them. OneDrive is included in the suite of online services formerly known as WindowsLive.

References: <https://www.windowscentral.com/how-create-one-large-volume-using-multiple-hard-drives-windows-10>
[https://docs.microsoft.com/en-us/previous-versions/windows/it-pro/windows-server-2008-R2-and-2008/cc725671\(v=ws.11\)](https://docs.microsoft.com/en-us/previous-versions/windows/it-pro/windows-server-2008-R2-and-2008/cc725671(v=ws.11))

QUESTION 128

You are a systems administrator of a small branch office. Computers in the office are joined to a Windows 10 HomeGroup.

The HomeGroup includes one shared printer and several shared folders.

You join a new computer to the HomeGroup and try to access the HomeGroup shared folders. You discover that the shared folders are unavailable, and you receive an error message that indicates the password is incorrect.

You need to reconfigure the new computer in order to access the HomeGroup resources.

What should you do?



<https://vceplus.com/>

- A. Adjust the time settings on the new computer to match the time settings of the HomeGroup computers.
- B. Change the Enterprise password and re-enter it on the computers of all members of the HomeGroup.
- C. Change the default sharing configuration for the shared folders on the HomeGroup computers.
- D. Reset your account password to match the HomeGroup password.

Correct Answer: A

Section: Manage Data Access and Protection

Explanation

Explanation/Reference:

Explanation:

Symptoms

When joining a system to a HomeGroup, you may receive the following error message "The password is incorrect", even though you have typed the password correctly.

Cause

This can be caused by a difference in the Date and Time settings on the computer trying to join the HomeGroup, and not an invalid password. If the date/time of the computer joining a HomeGroup is greater than 24 hours apart from the date/time of the system that owns the HomeGroup, this will cause the error.

Resolution

Adjust the date/time settings on the system joining the HomeGroup, to match the system that owns the HomeGroup, and then try to join again.

QUESTION 129

Note: This question is part of a series of questions that use the same or similar answer choices. An answer choice may be correct for more than one question in the series. Each question is independent of the other questions in this series. Information and details provided in a question apply only to that question.

You have a computer that runs Windows 10 and is used by 10 users. The computer is joined to an Active Directory domain. All of the users are members of the Administrators group. Each user has an Active Directory account.

You have a Microsoft Word document that contains confidential information.

You need to ensure that you are the only user who can open the document.

What should you configure?

- A. account policies
- B. application control policies
- C. HomeGroup settings
- D. software restriction policies
- E. NTFS permissions
- F. Microsoft OneDrive
- G. share permissions
- H. Encrypting File System (EFS) settings

Correct Answer: H

Section: Manage Data Access and Protection

Explanation

Explanation/Reference:

QUESTION 130

Note: This question is part of a series of questions that use the same or similar answer choices. An answer choice may be correct for more than one question in the series. Each question is independent of the other questions in this series. Information and details provided in a question apply only to that question.

A user successfully accesses \\server1\Sources\App1\. The user cannot access \\server1\Sources\App2\.

You need to ensure that the user can access \\server1\Sources\App2\.

What should you configure?

- A. Microsoft OneDrive
- B. share permissions
- C. account policies
- D. software restriction policies
- E. HomeGroup settings
- F. application control policies
- G. NTFS permissions
- H. Encrypting File System (EFS) settings

Correct Answer: G

Section: Manage Data Access and Protection

Explanation

Explanation/Reference:



QUESTION 131

Note: This question is part of a series of questions that present the same scenario. Each question in the series contains a unique solution that might meet the stated goals. Some question sets might have more than one correct solution, while others might not have a correct solution.

After you answer a question in this section, you will NOT be able to return to it. As a result, these questions will not appear in the review screen.

You manage a corporate network. All servers run Windows Server 2016. All servers and client devices are joined to an Active Directory Domain Services (AD DS) domain named adatum.com. The use of VPN servers on the network is strictly prohibited.

Users must be able to access the corporate network in addition to Work Folders when they work at home on Windows 10 devices. You install, configure, and publish the certificate revocation list (CRL) for an internal Active Directory Certificate Services (AD CS) server.

You need to configure the environment to allow your users to register devices.

Solution: You create a DNS CNAME record of enterpriseregistration.adatum.com. You deploy Active Directory Federation Services (AD FS) and point the DNS record to your AD FS server. You deploy a Web Application Proxy server for the clients to connect to establish Internet connectivity to the device registration connection.

Does the solution meet the goal?

- A. Yes
- B. No

Correct Answer: A

Section: Manage Remote Access

Explanation

Explanation/Reference:

References:

<https://blog.nextxpert.com/2013/11/27/publishing-work-folders-with-web-application-proxy-2/>

QUESTION 132

Note: This question is part of a series of questions that present the same scenario. Each question in the series contains a unique solution that might meet the stated goals. Some question sets might have more than one correct solution, while others might not have a correct solution.

After you answer a question in this section, you will NOT be able to return to it. As a result, these questions will not appear in the review screen.

You manage a corporate network. All servers run Windows Server 2016. All servers and client devices are joined to an Active Directory Domain Services (AD DS) domain named adatum.com. The use of VPN servers on the network is strictly prohibited.

Users must be able to access the corporate network in addition to Work Folders when they work at home on Windows 10 devices. You install, configure, and publish the certificate revocation list (CRL) for an internal Active Directory Certificate Services (AD CS) server.

You need to configure the environment to allow your users to register devices.

Solution: You create a DNS A record of deviceregistration.adatum.com. You deploy Active Directory Federation Services (AD FS) and point the DNS record to your AD FS server. You deploy a Web Application Proxy server for the clients to establish Internet connectivity for the device registration.

Does the solution meet the goal?

- A. Yes
- B. No

Correct Answer: B

Section: Manage Remote Access

Explanation

Explanation/Reference:

References:

<https://blog.nextxpert.com/2013/11/27/publishing-work-folders-with-web-application-proxy-2/>

QUESTION 133

Note: This question is part of a series of questions that use the same or similar answer choices. An answer choice may be correct for more than one question in the series. Each question is independent of the other questions in this series. Information and details provided in a question apply only to that question.

You support Windows 10 Enterprise desktop computers and tablets. All of the computers are able to connect to your company network from the Internet by using DirectAccess.

Your company wants to deploy a new application to the tablets. The deployment solution must meet the following requirements: ▪

The application is stored locally on the tablets.

▪ Access to the applications is protected with extra logon credentials, in addition to a standard domain account used by users. ▪

The application utilizes the least amount of network bandwidth.

▪ The application must maintain access to the current desktop.

You need to deploy the new application to the tablets.

What should you do?

- A. Deploy the application as an Application Virtualization (App-V) package. Install the App-V 4.6 client on the tablets.
- B. Deploy the application as a published application on the Remote Desktop server. Create a Remote Desktop connection on the tablets.
- C. Install the application on a local drive on the tablets.
- D. Install the application in a Windows To Go workspace.
- E. Install Hyper-V on tablets. Install the application on a virtual machine.
- F. Publish the application to Windows Store.
- G. Install the application within a separate Windows 10 Enterprise installation in a virtual hard disk (VHD) file. Configure the tablets with dual boot.
- H. Install the application within a separate Windows 10 Enterprise installation in a VHDX file. Configure tablets with dual boot.

Correct Answer: A

Section: Manage Remote Access

Explanation

Explanation/Reference:

QUESTION 134

Note: This question is part of a series of questions that use the same or similar answer choices. An answer choice may be correct for more than one question in the series. Each question is independent of the other questions in this series. Information and details provided in a question apply only to that question.

You support Windows 10 Enterprise desktop computers and tablets. All of the computers are able to connect to your company network from the Internet by using DirectAccess.

Your company wants to deploy a new application to the tablets. The deployment solution must meet the following requirements:

▪ The application is not accessible if a user is working offline.

- The application is isolated from other applications.
- The application uses the least amount of disk space.

You need to deploy the new application to the tablets.

What should you do?

- A. Deploy the application as an Application Virtualization (App-V) package. Install the App-V 4.6 client on the tablets.
- B. Deploy the application as a published application on the Remote Desktop server. Create a Remote Desktop connection on the tablets.
- C. Install the application on a local drive on the tablets.
- D. Install the application in a Windows To Go workspace.
- E. Install Hyper-V on tablets. Install the application on a virtual machine.
- F. Publish the application to Windows Store.
- G. Install the application within a separate Windows 10 Enterprise installation in a virtual hard disk (VHD) file. Configure the tablets with dual boot.
- H. Install the application within a separate Windows 10 Enterprise installation in a VHDX file. Configure tablets with dual boot.

Correct Answer: B

Section: Manage Remote Access

Explanation



Explanation/Reference:

QUESTION 135

You have Windows 10 Enterprise desktop computer and a Windows 10 Enterprise laptop computer.

You connect from the desktop to the laptop by using Remote Desktop. You are unable to copy any files between the desktop and the laptop during the Remote Desktop session.

You need to ensure that you can copy files between the computers during the Remote Desktop session.

What should you do?

- A. On the desktop, add the laptop to the trusted hosts in Windows Remote Management (WinRM).
- B. On the laptop, open Remote Desktop Connection and configure the Local devices and resources settings.
- C. On the desktop, open Remote Desktop Connection and configure the Local devices and resources settings.
- D. On the laptop, add the desktop to the trusted hosts in Windows Remote Management (WinRM).

Correct Answer: C

Section: Manage Remote Access

Explanation

Explanation/Reference:

References: <https://www.technipages.com/unable-to-copy-and-paste-to-remote-desktop-session>

QUESTION 136

You provide IT support for a small business.

A member of the team needs the ability to use Remote Desktop and VPN to access a desktop computer from a laptop when traveling. This desktop computer is running Windows 10 Enterprise, while the laptop is running Windows 8.

You need to set up a secure Remote Desktop connection on the desktop computer.

Which two actions should you perform? Each correct answer presents part of the solution.

NOTE: Each correct selection is worth one point.

- A. Make the user account a standard user.
- B. Allow remote connections.
- C. Require Network Level Authentication.
- D. Disable Remote Assistance connections.



Correct Answer: BC

Section: Manage Remote Access

Explanation

Explanation/Reference:

References:

<https://docs.microsoft.com/en-us/windows-server/remote/remote-desktop-services/clients/remote-desktop-allow-access>

QUESTION 137

A company has Windows 10 Enterprise client computers that use DirectAccess.

You need to ensure that the client computers can communicate to IPv4 resources by name.

What should you implement on the client computers?

- A. AAA (Quad A) resource records
- B. Teredo tunnels
- C. NAT64/DNS64
- D. Teredo relays
- E. Intra-Site Automatic Tunnel Addressing Protocol (ISATAP)

Correct Answer: C

Section: Manage Remote Access

Explanation

Explanation/Reference:

References: [https://msdn.microsoft.com/en-us/library/windows/desktop/aa965905\(v=vs.85\).aspx](https://msdn.microsoft.com/en-us/library/windows/desktop/aa965905(v=vs.85).aspx)

QUESTION 138

Note: This question is part of a series of questions that use the same or similar answer choices. An answer choice may be correct for more than one question in the series. Each question is independent of the other questions in this series. Information and details provided in a question apply only to that question.

You support Windows 10 Enterprise desktop computers and tablets. All of the computers are able to connect to your company network from the Internet by using DirectAccess.

Your company wants to deploy a new application to the tablets. The deployment solution must meet the following requirements:

- The application is not accessible if a user is working offline
- The application is stored on an internal solid-state drive (SSD) on the tablets ▪

The application is isolated from other applications

- The application uses the least amount of disk space

You need to deploy the new application to the tablets.

What should you do?

- A. Deploy the application as an Application Virtualization (App-V) package. Install the App-V 4.6 client on the tablets.
- B. Deploy the application as a published application on the Remote Desktop server. Create a Remote Desktop connection on the tablets.
- C. Install the application on a local drive on the tablets.
- D. Install the application in a Windows To Go workspace.
- E. Install Hyper-V on tablets. Install the application on a virtual machine.
- F. Publish the application to Windows Store.
- G. Install the application within a separate Windows 10 Enterprise installation in a virtual hard disk (VHD) file. Configure the tablets with dual boot.
- H. Install the application within a separate Windows 10 Enterprise installation in a VHDX file. Configure tablets with dual boot.

Correct Answer: B

Section: Manage Remote Access

Explanation

Explanation/Reference:

QUESTION 139

A laptop runs Windows 10 Enterprise. You connect the laptop to a corporate network by using a VPN connection.

The company policy requires all company computers to be restricted from the Internet access while connected to the corporate network.

You need to configure this laptop to ensure that it cannot access the Internet when its VPN connection to the corporate network is active.

What should you do?

- A. Configure the VPN connection to use only PPTP
- B. In the TCP/IPv4 properties of the VPN connection, enable the **Use default gateway on remote network** setting
- C. In the TCP/IPv4 properties of the VPN connection, disable the **Use default gateway on remote network** setting
- D. Configure the VPN connection to use only L2TP/IPSec

Correct Answer: C

Section: Manage Remote Access

Explanation

Explanation/Reference:

References: <https://www.nextofwindows.com/how-to-use-local-internet-connection-to-access-internet-while-still-connected-with-vpn>

QUESTION 140

You administer Windows 10 Enterprise computers in your company network. All computers are members of an Active Directory Domain Services (AD DS) domain. A server named Server1 runs Windows Server 2012 R2 and has an IP address of 10.10.10.20. Server1 is configured to use port 10987 for Remote Desktop connections.

From your Windows 10 Enterprise computer, you need to create a Remote Desktop connection to Server1.

What should you do?

- A. Run **mstsc.exe /v:10.10.10.20:10987**.
- B. Run **mstsc.exe /v:10.10.10.20 /p:10987**.
- C. From the General tab of your Remote Desktop connection, enter **10.10.10.20 port:10987**.
- D. From the Advanced tab of your Remote Desktop connection, configure the port of Server1 in the server authentication field.

Correct Answer: A

Section: Manage Remote Access

Explanation

Explanation/Reference:

References:

<https://docs.microsoft.com/en-us/windows-server/administration/windows-commands/mstsc>

QUESTION 141

A company has Windows 10 Enterprise client computers. Client computers are connected to a corporate private network. You deploy a Remote Desktop Gateway, DirectAccess, and a VPN server at the corporate main office.

Users are currently unable to connect from their home computers to their work computers by using Remote Desktop

You need to ensure that users can remotely connect to their office computers by using Remote Desktop. Users must not be able to access any other corporate network resource from their home computers.

What should you do?

- A. Configure a Virtual Private Network connection.
- B. Configure the local resource settings of the Remote Desktop connection.
- C. Configure a DirectAccess connection.
- D. Configure the Remote Desktop Gateway IP address in the advanced Remote Desktop Connection settings on each client.

Correct Answer: D

Section: Manage Remote Access

Explanation



Explanation/Reference:

Explanation:

The solution is to deploy Remote Desktop Gateway in the office. Remote users can then connect to their computers on the office network by using Remote Desktop client on their home computers configured with the IP address of the Remote DesktopGateway.

Remote Desktop Gateway (RD Gateway) is a role service that enables authorized remote users to connect to resources on an internal corporate or private network, from any Internet-connected device that can run the Remote Desktop Connection (RDC) client. The network resources can be Remote Desktop Session Host (RD Session Host) servers, RD Session Host servers running RemoteApp programs, or computers with Remote Desktop enabled.

RD Gateway uses the Remote Desktop Protocol (RDP) over HTTPS to establish a secure, encrypted connection between remote users on the Internet and the internal network resources on which their productivity applications run.

RD Gateway provides a comprehensive security configuration model that enables you to control access to specific internal network resources. RD Gateway provides a point-to-point RDP connection, rather than allowing remote users access to all internal network resources.

References:

<https://technet.microsoft.com/en-gb/library/cc731150.aspx>

QUESTION 142

You manage a network that includes Windows 10 Enterprise computers. All of the computers on the network are members of an Active Directory domain.

The company recently proposed a new security policy that prevents users from synchronizing applications settings, browsing history, favorites, and passwords from the computers with their Microsoft accounts.

You need to enforce these security policy requirements on the computers.

What should you do?

- A. On the Group Policy Object, configure the **Accounts: Block Microsoft accounts** Group Policy setting to **Users can't add Microsoft accounts**.
- B. On the Group Policy Object, configure the **Accounts: Block Microsoft accounts** Group Policy setting to **Users can't add or log on with Microsoft accounts**.
- C. From each computer, navigate to Change Sync Settings and set the **Sync Your Settings** options for Apps, Browser, and Passwords to **Off**.
- D. From each computer, navigate to Change Sync Settings and set the **Sync Your Settings** option to **Off**.

Correct Answer: B

Section: Manage Remote Access

Explanation

Explanation/Reference:

Explanation:

The computers are members of a domain so the users should be using domain user accounts. We need to block the use of Microsoft accounts.

We could use the Users can't add Microsoft accounts setting which would mean that users will not be able to create new Microsoft accounts on a computer, switch a local account to a Microsoft account, or connect a domain account to a Microsoft account.

Alternatively, we can also deny the ability to log on to a domain computer with a Microsoft account (and sync computer settings) by using the Users can't add or log on with Microsoft accounts. This will ensure that the company policy is enforced.

References:

<https://technet.microsoft.com/en-us/library/jj966262.aspx>

QUESTION 143

You have a Remote Desktop Session Host (RD Session Host) server. The server is accessible from the internal network.

To access the server remotely, you must connect to a Remote Desktop Gateway (RD Gateway) server.

On a laptop, you successfully configure a Remote Desktop connection that you use to access the RD Session Host server from the internal network.

From your home, you attempt to connect to the RD Session Host server by using the Remote Desktop connection, but the connection fails.

You need to connect to the RD Session Host server.

What should you configure on the laptop?

- A. the **Remote Assistance** settings in System Properties.
- B. the **Connect from anywhere** settings in Remote Desktop Connection.
- C. the **Performance** settings in Remote Desktop Connection.
- D. the **Remote Desktop** settings in System Properties.

Correct Answer: B

Section: Manage Remote Access

Explanation

Explanation/Reference:

References:

[https://technet.microsoft.com/en-us/library/cc770601\(v=ws.11\).aspx](https://technet.microsoft.com/en-us/library/cc770601(v=ws.11).aspx)

QUESTION 144

Note: This question is part of a series of questions that use the same or similar answer choices. An answer choice may be correct for more than one question in the series. Each question is independent of the other questions in this series. Information and details in a question apply only to that question.

You have a mobile device that connects to a 4G network and a laptop.

You work from a remote location that does not have Internet access.

You plan to use the mobile device as a mobile hotspot for the laptop, so that you can access files from the corporate office.

Which Control Panel application should you use on the laptop to connect to the mobile hotspot?

- A. Phone and Modem
- B. RemoteApp and Desktop Connections
- C. System
- D. Credential Manager
- E. Work Folders
- F. Power Options
- G. Sync Center
- H. Network and Sharing Center

Correct Answer: H

Section: Manage Remote Access

Explanation

Explanation/Reference:

QUESTION 145

Note: This question is part of a series of questions that use the same or similar answer choices. An answer choice may be correct for more than one question in the series. Each question is independent of the other questions in this series. Information and details in a question apply only to that question.

You need to enable other users to establish Remote Desktop connections to your computer.

Which Control Panel application should you use?

- A. Credential Manager
- B. Sync Center
- C. System
- D. Power Options
- E. Phone and Modem
- F. RemoteApp and Desktop Connections
- G. Network and Sharing Center
- H. Work Folders

Correct Answer: C

Section: Manage Remote Access

Explanation

Explanation/Reference:

QUESTION 146

Note: This question is part of a series of questions that present the same scenario. Each question in the series contains a unique solution that might meet the stated goals. Some question sets might have more than one correct solution, while others might not have a correct solution.

After you answer a question in this section, you will NOT be able to return to it. As a result, these questions will not appear in the review screen.

You manage a corporate network. All servers run Windows Server 2016. All servers and client devices are joined to an Active Directory Domain Services (AD DS) domain named adatum.com. The use of VPN servers on the network is strictly prohibited.

Users must be able to access the corporate network in addition to Work Folders when they work at home on Windows 10 devices. You install, configure, and publish the certificate revocation list (CRL) for an internal Active Directory Certificate Services (AD CS) server.

You need to configure the environment to allow your users to register devices.

Solution: You create a DNS CNAME record of enterpriseregistration.adatum.com. You deploy a Web Application Proxy server and point the DNS record to your Web Application Proxy server.

Does the solution meet the goal?

- A. Yes
- B. No

Correct Answer: B

Section: Manage Remote Access
Explanation

Explanation/Reference:

References:

<https://blog.nextxpert.com/2013/11/27/publishing-work-folders-with-web-application-proxy-2/>

QUESTION 147

You have an Active Directory domain named contoso.com. You use RemoteApp to make applications available to Android and iOS users.

The external DNS zone for contoso.com is shown in the exhibit. (Click the **Exhibit** button.)



You need to provide a user with the connection URL for the Remote Desktop app on an Android device.

Which connection URL should you provide?

- A. <https://server1.contoso.com/RDWeb/feed/webfeed.aspx>
- B. server1.contoso.com
- C. <https://server1.contoso.com/RDWeb/feed>
- D. _msrads.contoso.com

Correct Answer: B

Section: Manage Remote Access

Explanation

Explanation/Reference:

References: <https://www.rds.gurus.com/working-with-rd-web-access-in-windows-server-2012/> **QUESTION 148**

You plan to deploy a Microsoft Azure Remote App collection by using a custom template image. The image will contain Microsoft Office 365 apps. The image will be used to deploy a collection that will be accessed by 50 users.

You need to identify licensing requirements for the deployment.

Which two requirements should you identify? Each correct answer presents part of the solution.

- A. An activated Office 365 ProPlus installation
- B. Windows client access licenses (CALs) assigned to the users
- C. Office 365 ProPlus licenses assigned to the users
- D. Remote Desktop client access licenses (CALs) assigned to the users
- E. Office 365 Enterprise E3 service plan

Correct Answer: AC

Section: Manage Apps

Explanation

Explanation/Reference:

References:

<https://docs.microsoft.com/en-us/azure/remoteshell/remoteshell-licensing>

QUESTION 149

You support Windows 10 Enterprise tablets. The tablets have the Application Virtualization (App-V) client installed.

Company policy requires that all published App-V applications be available to users only when they are connected to the company network.

You need to configure the tablets so that the company policy requirements are enforced.

What should you do?

- A. Configure mandatory profiles for tablet users.
- B. Reset the App-V client File System cache on the tablets.
- C. Disable the Disconnected operation mode on the tablets.
- D. Change user permissions to the App-V applications.

Correct Answer: C

Section: Manage Apps

Explanation

Explanation/Reference:

QUESTION 150

You have Windows 10 Enterprise client computers. The computers use Microsoft Application Virtualization (App-V) to deploy apps.

You discover that when users sign in to their computer, the App-V client refreshes all of the published packages.

You need to prevent the App-V client from refreshing the published packages at sign-in. The solution must ensure that the users can use App-V applications.

Which Windows PowerShell cmdlet should you run?.



<https://vceplus.com/>

- A. **Set-AppvClientPackage**
- B. **Set-AppvClientConfiguration**
- C. **Set-AppvPublishingServer**
- D. **Set-AppvClientMode**

Correct Answer: C

Section: Manage Apps

Explanation

Explanation/Reference:

References:

<https://docs.microsoft.com/en-us/powershell/module/appvclient/set-appvpublishingserver?view=win10-ps>

QUESTION 151

HOTSPOT

You run the **Get-UevConfiguration** cmdlet and you receive the following output:

www.vceplus.com - VCE Exam Simulator - Download A+ VCE (latest) free Open VCE Exams - VCE to PDF Converter - PDF Online

Key	Value
---	----
ContactITDescription	
ContactITUrl	
DontSyncWindows8AppSettings	False
FirstUseNotificationEnabled	True
MaxPackageSizeInBytes	
SettingsImportNotifyDelayInSeconds	10
SettingsImportNotifyEnabled	True
SettingsStoragePath	\\SERVER1\Share1
SettingsTemplateCatalogPath	\\SERVER2\Share2
SupportedTemplateSchemaVersions	{http://schemas.microsoft.com/UserExperienceVirtualiza
SyncEnabled	True
SyncMethod	SyncProvider
SyncOverMeteredNetwork	False
SyncOverMeteredNetworkWhenRoaming	False
SyncProviderPingEnabled	True
SyncTimeoutInMilliseconds	2000
SyncUnlistedWindows8Apps	False
TrayIconEnabled	True
VdiCollectionName	DefaultVdiCollection
WaitForSyncOnApplicationStart	False
WaitForSyncOnLogon	False
WaitForSyncTimeoutInMilliseconds	2000

Use the drop-down menus to select the answer choice that completes each statement based on the information presented in the output.

NOTE: Each correct selection is worth one point.

Hot Area:

Answer Area

User custom settings are [answer choice].

If you want to store the user settings of a new application, you must copy an XML file to [answer choice].

cached only

saved directly to \\SERVER1\Share1

saved first to a local cache, and then synchronized to \\S

saved first to a local cache, and then synchronized to \\S

\\SERVER1\Share1

\\SERVER2\Share2

%Program Files%\Microsoft User Experience Virtualizatio

http://shemas.microsoft.com/UserExperienceVirtualizatio

Correct Answer:

Section: Manage Apps

Explanation

Explanation/Reference:

Explanation:

Answer Area

User custom settings are [answer choice].

cached only

saved directly to \\SERVER1\Share1

saved first to a local cache, and then synchronized to \\S

saved first to a local cache, and then synchronized to \\S

If you want to store the user settings of a new application, you must copy an XML file to [answer choice].

\\SERVER1\Share1

\\SERVER2\Share2

%Program Files%\Microsoft User Experience Virtualization

http://shemas.microsoft.com/UserExperienceVirtualization

User custom settings are saved directly to \\SERVER1\Share1

If you want to store the user settings of a new application, you must copy an XML file to \\SERVER2\Share2

References:

<https://docs.microsoft.com/en-us/powershell/module/uev/get-uevconfiguration?view=win10-ps> <https://docs.microsoft.com/en-us/powershell/module/uev/set-uevconfiguration?view=win10-ps> <https://docs.microsoft.com/en-us/windows/configuration/ue-v/uev-manage-configurations> **QUESTION 152**

A company installs a line-of-business (LOB) app on a server that runs Remote Desktop Services.

You need to ensure that you can publish the application by using RemoteApp.

What should you do first?

- A. Create a personal desktop session collection.
- B. Manually assign users to a session host.
- C. Create a pooled desktop collection.
- D. Automatically assign users to a session host.

Correct Answer: C

Section: Manage Apps

Explanation

Explanation/Reference:

References:

<https://docs.microsoft.com/en-us/windows-server/remote/remote-desktop-services/rds-create-collection#create-a-pooled-desktop-session-collection>

QUESTION 153

You have a Windows Server 2012 R2 server that runs Remote Desktop services.

Users report that they cannot connect to RemoteApp programs. You observe that users do not know the proper connection details to access the Remote Desktop Web Access server.

You need to simplify the process for connecting from Windows 10 devices to the Remote Desktop Web Access server.

What should you create?

- A. Connection Manager Administration Kit connection profile
- B. Remote Desktop Connection configuration file
- C. Windows Remote Management script
- D. client configuration file



Correct Answer: A

Section: Manage Apps

Explanation

Explanation/Reference:

References:

[https://docs.microsoft.com/en-us/previous-versions/windows/it-pro/windows-server-2008-R2-and-2008/cc753977\(v=ws.10\)](https://docs.microsoft.com/en-us/previous-versions/windows/it-pro/windows-server-2008-R2-and-2008/cc753977(v=ws.10))

QUESTION 154

A company has Windows 10 Enterprise client computers.

You install a new device on a client computer. The device installation includes an application that runs when the computer starts. You experience problems with the application.

You need to prevent the application from the running when the computer starts, without affecting any other application.

What should you do?

- A. Configure the application by using Task Manager
- B. Run the **bcdedit** command

- C. Run the **msconfig** command
- D. Configure the device by using Device Manager

Correct Answer: A

Section: Manage Apps

Explanation

Explanation/Reference:

References: <https://support.microsoft.com/en-za/help/4026268/windows-change-startup-apps-in-windows-10>

QUESTION 155

You support Windows 10 Enterprise computers. You publish an App-V application named App1.

A laptop user reports that App1 runs when their laptop is connected to the company network. App1 does not run when the user is disconnected from the company network.

You need to ensure that App1 runs on the laptop when it is disconnected from the company network.

What should you do?

- A. Change the user profile to **Roaming**.
- B. Change the **AutoLoadTriggers** registry key settings.
- C. Change the **AutoLoadTarget** registry key settings.
- D. Change the user profile to **Mandatory**.



Correct Answer: A

Section: Manage Apps

Explanation

Explanation/Reference:

QUESTION 156

You are a system administrator for a department that has Windows 10 Enterprise computers in a domain configuration.

You deploy an application to all computers in the domain.

You need to use group policy to restrict certain groups from running the application.

What should you do?

- A. Set up DirectAccess.
- B. Configure AppLocker.

- C. Disable BitLocker.
- D. Run the User State Management Tool.

Correct Answer: B

Section: Manage Apps

Explanation

Explanation/Reference:

Explanation:

AppLocker is a feature in Windows Server 2012, Windows Server 2008 R2, Windows 8, and Windows 7 that advances the functionality of the Software Restriction Policies feature. AppLocker contains new capabilities and extensions that reduce administrative overhead and help administrators control how users can access and use files, such as executable files, scripts, Windows Installer files, and DLLs.

AppLocker rules can be applied to security groups. We can use a group policy to apply AppLocker rules to the security groups to prevent them from running the application.

References:

[https://technet.microsoft.com/en-us/library/ee619725\(v=ws.10\).aspx#BKMK_WhatRuleConditions](https://technet.microsoft.com/en-us/library/ee619725(v=ws.10).aspx#BKMK_WhatRuleConditions)

QUESTION 157

You support desktop computers and tablets that run Windows 8 Enterprise. All of the computers are able to connect to your company network from the Internet by using DirectAccess.

Your company wants to deploy a new application to the tablets. The deployment solution must meet the following requirements:

- The application is able to access files stored on an internal solid-state drive (SSD) on the tablets.
- The application is isolated from other applications.
- The application uses the least amount of disk space on the tablet.

You need to deploy the new application to the tablets.

What should you do?

- A. Deploy the application as an Application Virtualization (App-V) package. Install the App-V 4.6 client on the tablets.
- B. Deploy the application as a published application on the Remote Desktop server. Create a Remote Desktop connection on the tablets.
- C. Install the application on a local drive on the tablets.
- D. Install the application in a Windows To Go workspace.
- E. Install Hyper-V on tablets. Install the application on a virtual machine.
- F. Publish the application to Windows Store.
- G. Install the application within a separate Windows 8 installation in a virtual hard disk (VHD) file. Configure the tablets with dual boot.
- H. Install the application within a separate Windows 8 installation in a VHDX file. Configure tablets with dual boot.

Correct Answer: B

Section: Manage Apps

Explanation

Explanation/Reference:

Explanation:

Deploying the application as a published application on the Remote Desktop server will use no disk space on the tablets. Users will be able to access the application by using Remote Desktop Connections. This will also ensure that the application is isolated from other applications on the tablets.

We can use Remote Desktop Connection 'redirection' to ensure that the application is able to access files stored on an internal solid-state drive (SSD) on the tablets. Redirection enables access to local resources such as drives, printers etc. in a Remote Desktop Connection.

References:

<https://azure.microsoft.com/en-gb/documentation/articles/remoteapp-redirection/>

QUESTION 158

You have a computer named Computer1 that runs Windows 10 Enterprise. Computer1 is a member of an Active Directory domain named contoso.com.

You have a line-of-business universal app named App1. App1 is developed internally.

You need to ensure that you can run App1 on Computer1. The solution must meet the following requirements: ▪

Minimize costs to deploy the app.

- Minimize the attack surface on Computer1.

What should you do?

- A. Have App1 certified by the Windows Store.
- B. Sign App1 with a certificate issued by a third-party certificate authority.
- C. From the Update & Security setting on Computer1, enable the **Sideload apps** setting.
- D. Run the **Add-AppxProvisionedPackage** cmdlet.

Correct Answer: C

Section: Manage Apps

Explanation

Explanation/Reference:

Explanation:

To install the application, you need to 'Sideload' it. First you need to enable the Sideload apps setting.

LOB Windows Store apps that are not signed by the Windows Store can be sideloaded or added to a PC in the enterprise through scripts at runtime on a per-user basis. They can also be provisioned in an image by the enterprise so that the app is registered to each new user profile that's created on the PC. The requirements to sideload the app per-user or in the image are the same, but the Windows PowerShell cmdlets you use to add, get, and remove the apps are different.

Before you can sideload LOB Windows Store apps that are not signed by the Windows Store, you will need to configure the PC.

References:

<https://msdn.microsoft.com/en-us/library/hh454036.aspx>

QUESTION 159

Your network contains an Active Directory domain and 100 Windows 10 client computers. All software is deployed by using Microsoft Application Virtualization (AppV) 5.0.

Users are NOT configured as local administrators.

Your company purchases a subscription to Microsoft Office 365 that includes Office 365 ProPlus.

You need to create an App-V package for Office 365 ProPlus.

What should you do?

- A. Run the Office Customization Tool (OCT), run the **App-V Sequencer** and then run **Setup /Packager**.
- B. Download the Office Deployment Tool for Click-to-Run, run the **App-V Sequencer** and then run **Setup /Admin**.
- C. Download the Office Deployment Tool for Click-to-Run, run **Setup /Download** and then run **Setup /Packager**.
- D. Run the Office Customization Tool (OCT), run **Setup /Download** and then run the **App-V Sequencer**.

Correct Answer: C

Section: Manage Apps

Explanation



Explanation/Reference:

Explanation:

The Office Deployment Tool allows the administrator to customize and manage Office 2013 Volume License or Office 365 Click-to-Run deployments.

The Office Deployment Tool Setup runs the following tasks:

Setup /Download – Downloads files to create an Office 15 installation

Setup /Configure – Adds, removes, or configures an Office 15 installation

Setup /Packager – Produces an Office 15 App-V package

References:

<http://blogs.technet.com/b/pauljones/archive/2013/08/28/office-2013-click-to-run-with-configuration-manager-2012.aspx> <http://technet.microsoft.com/en-us/library/cc179097%28v=office.15%29.aspx>

QUESTION 160

You support computers that run Windows XP Professional SP3 and Windows 10 Enterprise.

You discover that one of the applications used by the logistics department does not run on Windows 10 Enterprise computers.

You need to run the application on Windows 10 Enterprise computers.

What should you do first?

- A. Install the Application Virtualization (App-V) client on all Windows XP computers in the logistics department.
- B. Create a Windows To Go workspace for all users in the logistics department.
- C. Run Refresh your PC on all Windows 10 Enterprise computers in the logistics department.
- D. Install Client Hyper-V on all Windows 10 Enterprise computers in the logistics department.

Correct Answer: D

Section: Manage Apps

Explanation

Explanation/Reference:

QUESTION 161

You support Windows 10 Enterprise desktop computers. Your company has a security policy that controls multiple settings of the desktop through the domain group policy.

The security policy recently was updated to require that access to several built-in Windows 10 Enterprise tools be prohibited to all local users on one of the desktop computers.

You need to implement this new policy.

What should you do?

- A. Configure an AppLocker policy.
- B. Create a Windows To Go workspace.
- C. Configure NTFS permissions.
- D. Enable BitLocker.

Correct Answer: A

Section: Manage Apps

Explanation

Explanation/Reference:

References:

<https://docs.microsoft.com/en-us/windows/security/threat-protection/windows-defender-application-control/applocker/security-considerations-for-applocker>

QUESTION 162

Note: This question is part of a series of questions that use the same or similar answer choices. An answer choice may be correct for more than one question in the series. Each question is independent of the other questions in this series. Information and details in a question apply only to that question.

Your network contains a shared folder that is located at \\server1\data.

On a computer, you make the shared folder available for offline use.

You need to ensure that you have the most up-to-date version of the folder cached.

Which Control Panel application should you use?

- A. Credential Manager
- B. Phone and Modem
- C. Work Folders
- D. System
- E. RemoteApp and Desktop Connections
- F. Network and Sharing Center
- G. Sync Center
- H. Power Options

Correct Answer: C

Section: Manage Updates and Recovery

Explanation

Explanation/Reference:



QUESTION 163

Note: This question is part of a series of questions that use the same or similar answer choices. An answer choice may be correct for more than one question in the series. Each question is independent of the other questions in this series. Information and details in a question apply only to that question.

You make a folder available for offline use.

Currently, the folder is synchronizing and will take approximately 15 minutes to complete.

You need to ensure that the files continue to synchronize when you close the lid of the computer.

Which Control Panel application should you use?

- A. System
- B. RemoteApp and Desktop Connections
- C. Work Folders
- D. Power Options
- E. Network and Sharing Center
- F. Credential Manager

- G. Phone and Modem
- H. Sync Center

Correct Answer: D

Section: Manage Updates and Recovery

Explanation

Explanation/Reference:

QUESTION 164

You administer Windows 10 Enterprise client computers in your company network.

You need to configure a backup and recovery solution that meets the following requirements:

- Recovers the system if it doesn't start.
- Recovers the system if the hard drive fails.

Which two actions should you perform? Each correct answer presents part of the solution.

NOTE: Each correct selection is worth one point.

- A. Create a system repair disk.
- B. Create a storage space.
- C. Turn on File History.
- D. Configure system protection.
- E. Create a system image backup.



Correct Answer: AE

Section: Manage Updates and Recovery

Explanation

Explanation/Reference:

QUESTION 165

You are the desktop administrator for a small company.

The company modifies its policy for retaining company financial documents from six months to three years. You currently use File History, retaining files for six months and saving copies of files every 20 minutes.

You need to adjust your current backup solution to accommodate the policy change.

What should you do?

- A. Set the **Keep Saved Versions** option in File History to **Forever**.

- B. Set the backup solution to Recovery model.
- C. Set the **Save Copies of Files frequency** to **Daily**.
- D. Set the **File History** log file setting to **Archive the log when full, do not overwrite events**.

Correct Answer: A

Section: Manage Updates and Recovery

Explanation

Explanation/Reference:

Explanation:

You can select one, two years or forever; there is no option for three years. Therefore, the only option is to keep the files forever.

QUESTION 166

You have 100 Windows computers that are managed by using Microsoft Intune.

You need to ensure that when a new critical update is released, the update is approved automatically and deployed to the computers within 24 hours of approval.

What should you do from the Microsoft Intune administration portal?

- A. From the Updates node, select **Critical Updates**, and then modify the **Approval** settings.
- B. From the Admin node, click **Enrollment Rules**, and then modify the device enrollment rules.
- C. From the Admin node, click **Updates**, and then create a new automatic approval rule.
- D. From the Policy node, click **Compliance Policies**, and then create a new compliance policy.
- E. From the Policy node, click **Configuration Policies**, and then create a new Windows policy.

Correct Answer: C

Section: Manage Updates and Recovery

Explanation

Explanation/Reference:

Explanation:

Automatic approval rules – These rules automatically approve specified types of update and reduce your administrative overhead. For example, you might want to automatically approve all critical software updates.

References:

<https://docs.microsoft.com/en-us/intune-classic/deploy-use/keep-windows-pcs-up-to-date-with-software-updates-in-microsoft-intune>

QUESTION 167

You have a portable Windows 10 Enterprise computer.

You are creating a backup plan. You have the following requirements:

- Automatically back up the files in your Documents folder every hour.

- Ensure that you can recover different versions of the backed-up files.
- Do not back up the Windows operating system files.

You need to configure the computer to meet the requirements.

Which two actions should you perform? Each correct answer presents part of the solution.

NOTE: Each correct selection is worth one point.

- A. Connect an external hard drive to the computer.
- B. Turn on File History.
- C. Create a volume mount point in your Documents folder.
- D. Schedule a task to create a restore point every hour.
- E. Create a recovery drive on drive C.

Correct Answer: AB

Section: Manage Updates and Recovery

Explanation

Explanation/Reference:



QUESTION 168

You work for a company that uses customized applications. The applications are published to 150 Windows 10 Enterprise laptops that are deployed in the field. All users must use the same version of the applications at the same time.

You need to deploy and manage the applications updates centrally.

What should you do?

- A. Deploy the applications as a Microsoft Application Virtualization.
- B. Use System Center Configuration Manager to deploy the application updates to the client.
- C. Deploy application updates as a shim through System Center Configuration.
- D. Use Intune to deploy the applications with the appropriate settings through the Windows Store.
- E. Deploy the applications via RemoteApp.
- F. Distribute application updates through work folders.
- G Use System Center Configuration Manager to deploy full installations of the updated applications.
- G. Use Intune to deploy the applications through the company portal.

Correct Answer: B

Section: Manage Updates and Recovery

Explanation

Explanation/Reference:

Explanation:

Incorrect Answers:

E: RemoteApp is a virtual application solution that allows users to run windows-based applications regardless of what operating system they are using. F: Work Folders is a role service for file servers running Windows Server that provides a consistent way for users to access their work files from their PCs and devices.

G: The question requires you to deploy and manage the applications updates centrally. This option would not meet that requirement.

H: The question requires you to deploy and manage the applications updates centrally. This option would not meet that requirement.

References:

<https://docs.microsoft.com/en-us/sccm/mdm/deploy-use/management-tasks-applications#deploying-and-monitoring-apps>

<https://docs.microsoft.com/en-us/sccm/apps/deploy-use/revise-and-supersede-applications#application-supersedence>

<https://www.itg.ias.edu/RemoteApp> <https://docs.microsoft.com/en-us/windows-server/storage/work-folders/work-folders-overview>

QUESTION 169

You are the system administrator for a company. All devices run Windows 10 and use a variety of Microsoft Store for Business apps. All user reports issues updating a Windows Store app.

You need to troubleshoot the issue.

Winch three actions should you perform? Each correct answer presents a complete solution.

NOTE: Each correct selection is worth one point.

- A. Run the **SFC** command.
- B. Run the **repair-bde** command.
- C. Run the **net start wuauserv** command.
- D. Run the Windows App Troubleshooter.
- E. Use the Programs and Features Control Panel applet to repair the application.

Correct Answer: ADE

Section: Manage Updates and Recovery

Explanation

Explanation/Reference:

References:

<https://windowsreport.com/windows-10-app-store-doesn-t-update/#6>

QUESTION 170

A company has Windows 10 Enterprise client computers. Users store data files in their user profile libraries.

You need to ensure that users can restore data files to any date while minimizing system overhead.

Which two actions should you perform? Each answer presents part of the solution.

NOTE: Each correct selection is worth one point.

- A. Add each user to the local Backup Operations group.
- B. Turn on system protection.
- C. Configure settings to save copies of files daily.
- D. Turn on File History.

Correct Answer: CD

Section: Manage Updates and Recovery

Explanation

Explanation/Reference:

References:

<http://www.pcworld.com/article/2974385/windows/how-to-use-windows-10s-file-history-backup-feature.html>

QUESTION 171

You use a Windows 10 Enterprise laptop. You want to back up the Pictures library. You need to configure a backup strategy that backup the Pictures library to a network drive every day.

Additionally, you need to be able to recover a copy of any files from the library that have been changed with the last month.

What should you do?

- A. Configure computer restore points.
- B. Configure File History
- C. Create a Storage Pool.
- D. Create a system image.

Correct Answer: B

Section: Manage Updates and Recovery

Explanation

Explanation/Reference:

References:

<https://support.microsoft.com/en-za/help/17128/windows-8-file-history>

QUESTION 172

You have a computer named Computer1 that runs Windows 10 Enterprise.

You plan to install the most recent updates to Computer1.

You need to ensure that you can revert to the current state of Computer1 in the event that the computer becomes unresponsive after the update.

What should you include in your solution?

- A. The **Reset this PC** option from the Recovery section of the Settings app
- B. The **Sync your settings** options from the Accounts section of the Settings app
- C. The Backup and Restore (Windows 7) control panel item
- D. The **Refresh your PC** option from the PC Settings
- E. A volume snapshot by using the fsutil.exe command with the volume parameter
- F. The **Restore personal files** option from the File History control panel item

Correct Answer: C

Section: Manage Updates and Recovery

Explanation

Explanation/Reference:

Explanation:

The question states that you need to ensure that you can revert to the current state of Computer1. The question does not specify what exactly the current state is in terms of software configuration but it would be safe to assume that Computer1 has Windows Store Apps installed, desktop applications installed and some previous Windows Updates installed.

The only way to recover the computer to its 'current' state is to perform a full backup of the computer before updating it. Then if the computer becomes unresponsive after the update, we can simply restore the backup to return the computer to its state at the time of the backup.

Incorrect Answers:

A: When you Reset your PC, all your applications and data will be removed. It is like doing a complete Windows reinstall and formatting your hard drive.

B: The Sync your settings options are used for syncing settings with a Microsoft account. This does not return the computer to its current state.

D: When you Refresh your PC, your data, Windows Store Apps and application settings will be preserved. However, all your desktops applications and any existing Windows Updates will be removed. This does not return the computer to its current state.

References:

<http://www.howtogeek.com/220986/how-to-use-all-of-windows-10%E2%80%99s-backup-and-recovery-tools/>

QUESTION 173

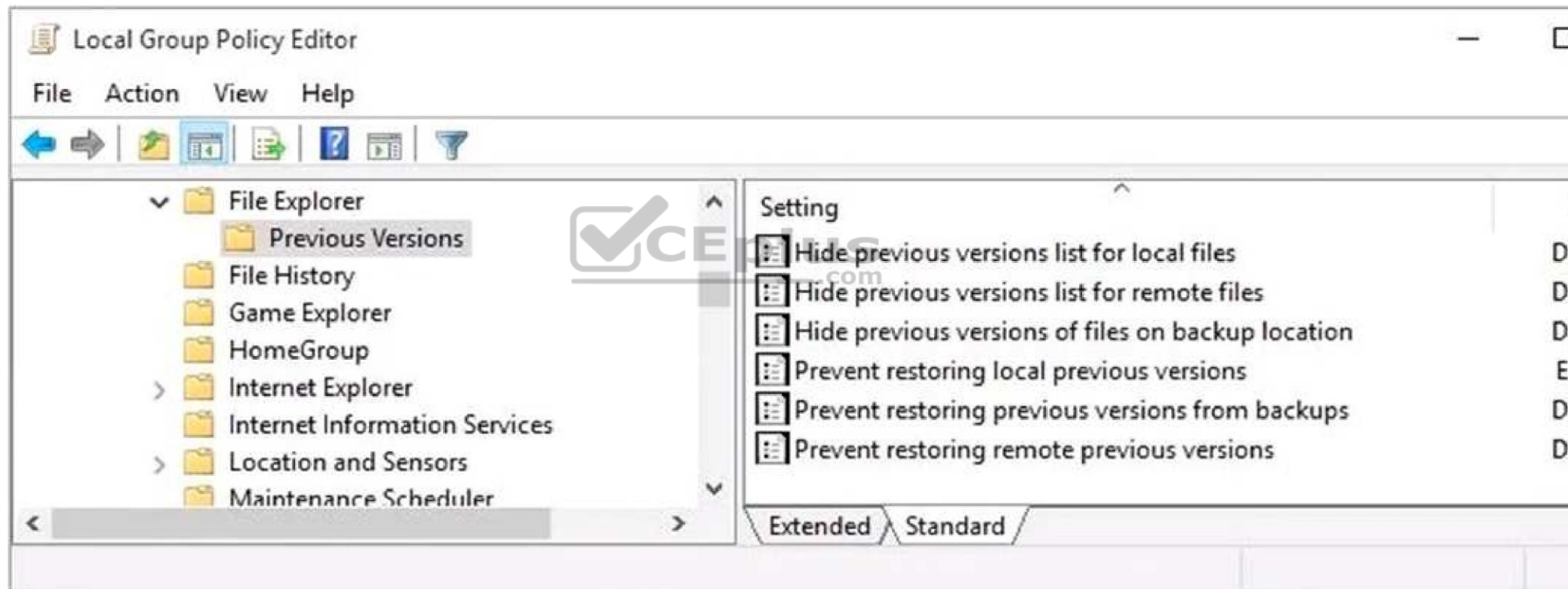
HOTSPOT

You have a standalone computer that runs Windows 10 Enterprise. The computer is configured to automatically back up files by using File History. The user of the computer uses the OneDrive desktop app to sync files.

The Previous Versions settings from the local group policy of the computer are shown in the following graphic.

Use the drop-down menus to select the answer choice that completes each statement based on the information presented in the graphic.

NOTE: Each correct selection is worth one point.



Hot Area:

Answer Area

If a user deletes a file from OneDrive by using File Explorer, the file **[answer choice]**.

- cannot be restored
- can be restored from onedrive.com
- can be restored by using the Previous Versions tab

If a user deletes a file from a local drive by using File Explorer, the file **[answer choice]**.

- cannot be restored
- can be restored from onedrive.com
- can be restored by using Previous Versions tab

Correct Answer:

Section: Manage Updates and Recovery

Explanation

Explanation/Reference:

Explanation:

Answer Area

If a user deletes a file from OneDrive by using File Explorer, the file **[answer choice]**.

- cannot be restored
- can be restored from onedrive.com
- can be restored by using the Previous Versions tab

If a user deletes a file from a local drive by using File Explorer, the file **[answer choice]**.

- cannot be restored
- can be restored from onedrive.com
- can be restored by using Previous Versions tab

When a file is deleted from the local OneDrive folder with File Explorer, the deletion is replicated to Onedrive.com and the file is moved to the OneDrive recycle bin. The deleted file can therefore be recovered from the Recycle Bin on Onedrive.com.

If a user deletes a file from a local drive by using File Explorer, the file cannot be restored. If the file is not in the OneDrive folder, it will not be a file that is synced to onedrive.com. We could use Previous Versions to restore the file but this is prevented by the Group Policy settings. The "Prevent restoring local previous versions" – Enabled group policy setting would prevent the previous version from being restored.

References:

<http://www.groovypost.com/howto/restore-deleted-files-local-onedrive-folder/>



<https://vceplus.com/>