

**2V0-620.exam.110q**

Number: 2V0-620  
Passing Score: 800  
Time Limit: 120 min



**Website:** <https://vceplus.com>  
**VCE to PDF Converter:** <https://vceplus.com/vce-to-pdf/>  
**Facebook:** <https://www.facebook.com/VCE.For.All.VN/>  
**Twitter :** [https://twitter.com/VCE\\_Plus](https://twitter.com/VCE_Plus)

<https://vceplus.com/>

**2V0-620**

**vSphere 6 Foundations Exam**

## Exam A

### QUESTION 1

What information is required as part of an interactive ESXi 6.x installation?



<https://vceplus.com/>

- A. Keyboard layout
- B. IP Address
- C. Root password
- D. DNS information

**Correct Answer:** A

**Section:** (none)

**Explanation**

**Explanation/Reference:**

Explanation:

Keyboard layout is required for interactive ESXi 6.x installation

Reference: <http://www.unixarena.com/2015/05/how-to-install-vmware-vsphere-6-0-esxi.html>

### QUESTION 2

After installation of a host in your test environment, you need to move it to production. The only major change that needs to be made is that the hostname of the server needs to change.

What are two ways that an administrator can change the host name without editing configuration files on the host directly? (Choose two.)

- A. Login to the Direct Console User Interface and change it from here.
- B. Edit the Default TCP/IP Configuration from the vSphere Web Client.
- C. Use the Ruby vSphere Client to send a script to the ESXi host that updates the hostname.



D. Update the information in DNS and the ESXi host will automatically update with these changes.

**Correct Answer:** AB

**Section:** (none)

**Explanation**

**Explanation/Reference:**

Explanation:

To change the host name without editing configuration files on the host, first, login to the direct console user interface and change the host name. Now edit the default TCP/IP configuration from the vSphere client. Reference: <http://pubs.vmware.com/vsphere-60/index.jsp>

### QUESTION 3

You are editing the management network configuration of an ESXi 6.x Host from the vSphere Web Client. You mistakenly put the incorrect VLAN in place for the management network.

What action do you need to take to correct this?

- A. You need to manually edit the configuration on the host with command line utilities.
- B. No action is required. By default ESXi rolls back configuration changes that disconnect the host.
- C. The ESXi host system configuration will need to be restored to the factory configuration to fix the issue.
- D. The change can be reverted in the vSphere Web Client by simply editing the switch again.

**Correct Answer:** B

**Section:** (none)

**Explanation**

**Explanation/Reference:**

Explanation:

Host networking rollbacks occur when an invalid change is made to the host networking configuration. Every network change that disconnects a host also triggers a rollback.

Reference: [https://kb.vmware.com/selfservice/microsites/search.do?language=en\\_US&cmd=displayKC&externalId=2032908](https://kb.vmware.com/selfservice/microsites/search.do?language=en_US&cmd=displayKC&externalId=2032908)

### QUESTION 4

You have just installed an ESXi 6.x Host. As part of your company security regulations, a security banner must be presented on the console of the host.

How can this action be accomplished?

- A. Configure the Advanced Settings > Annotations screen of the ESXi host.
- B. This is configured from the Direct Console User Interface configuration menu.

- C. It is not possible to configure a security banner for the ESXi host.
- D. From vCenter Server, this setting is configured globally in the vCenter Server configuration.

**Correct Answer:** A

**Section:** (none)

**Explanation**

**Explanation/Reference:**

Explanation:

For security banner, configure Advanced settings and go to Annotations screen of the ESXi host.

Reference: [https://kb.vmware.com/selfservice/microsites/search.do?language=en\\_US&cmd=displayKC&externalId=2046347](https://kb.vmware.com/selfservice/microsites/search.do?language=en_US&cmd=displayKC&externalId=2046347)

### QUESTION 5

In order for a company to meet regulatory requirements, all ESXi 6.x Hosts must be configured to direct logs to a syslog server.

What are two ways ESXi hosts can configured for this action? (Choose two)

- A. Use the esxcli system syslog command.
- B. Edit them in the ESXi host Advanced System Settings.
- C. From the Syslog collector user interface of the Web Client.
- D. Syslog logging is not available for ESXi Hosts.



**Correct Answer:** AB

**Section:** (none)

**Explanation**

**Explanation/Reference:**

Explanation:

To direct logs to a syslog server, uses esxcli system syslog command and edit them in the ESXi host advanced system settings.

Reference: [https://kb.vmware.com/selfservice/microsites/search.do?language=en\\_US&cmd=displayKC&externalId=2003322](https://kb.vmware.com/selfservice/microsites/search.do?language=en_US&cmd=displayKC&externalId=2003322)

### QUESTION 6

An administrator is performing an interactive installation of ESXi 6.x.

Which three options are available for installation? (Choose three.)

- A. DVD
- B. USB

- C. PXE
- D. Scripted
- E. Auto Deploy

**Correct Answer:** ABC

**Section:** (none)

**Explanation**

**Explanation/Reference:**

Explanation:

You can install ESXi 6.x using DVD drive, USB flash drive or PXE.

Reference: [https://kb.vmware.com/selfservice/microsites/search.do?language=en\\_US&cmd=displayKC&externalId=2109708](https://kb.vmware.com/selfservice/microsites/search.do?language=en_US&cmd=displayKC&externalId=2109708)

### QUESTION 7

An administrator is performing a scripted installation of ESXi 6.x.

In which three locations does the script need to be? (Choose three.)

- A. PXE Server
- B. HTTPS
- C. FTP
- D. NFS
- E. VVOLs Datastore



**Correct Answer:** BCD

**Section:** (none)

**Explanation**

**Explanation/Reference:**

Explanation:

- The script must be created using supported commands.
- Ensure you consider all disks that are connected to the host at the time of installation to avoid inadvertently overwriting data. Disk names can vary from machine to machine, one of the settings that you may want to configure and double check in a script is the disk selection for the ESXi installation.
- The host installation script must be stored in a location that the host can access by FTP, HTTP, HTTPS, NFS, USB flash drive, or CD-ROM drive. The installation media can be mounted on the host locally, remotely, or through PXE boot.

Reference: [https://kb.vmware.com/selfservice/microsites/search.do?language=en\\_US&cmd=displayKC&externalId=2109708](https://kb.vmware.com/selfservice/microsites/search.do?language=en_US&cmd=displayKC&externalId=2109708)

### QUESTION 8

Which three items should be validated prior to installing ESXi 6.x? (Choose three.)

- A. Remote Storage has been disconnected.
- B. Installation media is available.
- C. Server hardware clock is set to UTC.
- D. Storage has been partitioned with a VMFS volume.
- E. Network cards have been setup to use Jumbo Frames.

**Correct Answer:** ABC

**Section:** (none)

**Explanation**

**Explanation/Reference:**

Explanation:

Validate remote storage is disconnected. Install media is available and server hardware clock is set to UTC.

Reference: <https://pubs.vmware.com/vsphere-60/topic/com.vmware.ICbase/PDF/vsphere-esxi-vcenter-server-60-installation-setup-guide.pdf>

#### QUESTION 9

An administrator has just completed performing an interactive installation of ESXi 6.x and is booting the host.

How is the network initially configured?

- A. The network is configured by Automatic Private IP Addressing (APIPA).
- B. The network is configured based on the settings detected in DNS.
- C. The network is configured with the address as specified in the installer.
- D. The network is automatically configured by DHCP.

**Correct Answer:** D

**Section:** (none)

**Explanation**

**Explanation/Reference:**

Explanation:

Network is automatically configured by DHCP

Reference: <https://pubs.vmware.com/vsphere-60/topic/com.vmware.ICbase/PDF/vsphere-esxi-vcenter-server-60-installation-setup-guide.pdf>

#### QUESTION 10

An administrator has just completed installing an ESXi 6.x host, but doesn't know what address has been configured.

Where is the ESXi host IP address configured?

- A. RVC console
- B. Direct Console User Interface
- C. vSphere Web Client
- D. vSphere Client

**Correct Answer:** B

**Section:** (none)

**Explanation**

**Explanation/Reference:**

Explanation:

Access Direct Console User Interface to configure ESXi host IP address.

Reference: <http://www.virtualizationadmin.com/articles-tutorials/vmware-esx-and-vsphere-articles/installation-and-deployment/understanding-vmware-esxi-directconsole-user-interface-dcui.html>

#### QUESTION 11

An administrator has just configured the IP address on an ESXi host from the Direct Console User Interface.

How can the configuration be validated as correct without any additional tools?

- A. Add the host to vCenter Server and if it works, then all networking settings are ok.
- B. Select the Test Management Network option from the DCUI.
- C. Connect to the host with the vSphere Client and click the Test Network option.
- D. Use PowerCLI to connect to the host and initiate a network test.

**Correct Answer:** B

**Section:** (none)

**Explanation**

**Explanation/Reference:**

Explanation:

This DCUI interface offers the following:

- Configure Root password
- Configure Lockdown mode
- Configure Management network

- Restart Management Network ▪
- Test or disable Management
- Configure Keyboard
- View Support Information
- View System Logs
- Restart Management Network
- Reset System Configuration
- Remove Custom Extensions
- Shutdown or Restart /Reboot the ESXi Server

Reference: <http://www.virtualizationadmin.com/articles-tutorials/vmware-esx-and-vsphere-articles/installation-and-deployment/understanding-vmware-esxi-directconsole-user-interface-dcui.html>

### QUESTION 12

An administrator has recently installed a new ESXi 6.x Host, and during the configuration notices sporadic network problems. To check whether the issue occurred sometime during the configuration, the administrator would like to reset the system.

How can this be accomplished in the shortest amount of time?



<https://vceplus.com/>

- A. Run the ESXi installer again and reinstall the host.
- B. Select the Reset System Configuration option from the vSphere Client when connected directly to the host.
- C. From the Direct Console User Interface, select Reset System Configuration.
- D. Use a host profile to reset the configuration to a default state.

**Correct Answer: C**

**Section: (none)**

**Explanation**

**Explanation/Reference:**



Explanation:

This DCUI interface offers the following:

- Configure Root password
- Configure Lockdown mode
- Configure Management network
- Restart Management Network
- Test or disable Management ▪

Configure Keyboard

- View Support Information
- View System Logs
- Restart Management Network
- Reset System Configuration
- Remove Custom Extensions
- Shutdown or Restart /Reboot the ESXi Server

Reference: <http://www.virtualizationadmin.com/articles-tutorials/vmware-esx-and-vsphere-articles/installation-and-deployment/understanding-vmware-esxi-directconsole-user-interface-dcui.html>

### QUESTION 13

An administrator is given a bash script that retrieves data for ESXi 6.x host configurations. This data needs to be collected right after the installation of a host and must be run directly on the host.

Which two actions can be used to run this script on an ESXi host? (Choose two.)

- A. Connect to the host with Ruby vSphere Console and run the script from there.
- B. Enable SSH access from the Direct Console User Interface.
- C. Enable the ESXi Shell from the Direct Console User Interface.
- D. Run the script directly from the vSphere Web Client.

**Correct Answer:** BC

**Section:** (none)

**Explanation**

**Explanation/Reference:**

Explanation:

The Direct Console User Interface (DCUI) allows you to interact with the host locally using text-based menus. You can use the Direct Console User Interface to enable local and remote access to the ESXi Shell.

Reference: [https://pubs.vmware.com/vsphere-50/index.jsp?topic=%2Fcom.vmware.vsphere.security.doc\\_50%2FGUID-94F0C54F-05E3-4E16-80270280B9ED1009.html](https://pubs.vmware.com/vsphere-50/index.jsp?topic=%2Fcom.vmware.vsphere.security.doc_50%2FGUID-94F0C54F-05E3-4E16-80270280B9ED1009.html)

#### QUESTION 14

What is the default load balancing policy for a newly created VMkernel port on a vSphere Distributed Switch?

- A. Route based on originating virtual port ID
- B. Route based on IP Hash
- C. Route based on source mac address
- D. Route based on physical NIC load

**Correct Answer:** A

**Section:** (none)

**Explanation**

**Explanation/Reference:**

Explanation:

The default load balancing policy is route based on originating virtual port ID.

Reference: <https://pubs.vmware.com/vsphere-60/topic/com.vmware.ICbase/PDF/vsphere-esxi-vcenter-server-60-networking-guide.pdf> (page 47)

#### QUESTION 15

How are ports scaled on vSphere Standard Switches (vSS)?

- A. Ports on a vSS can be dynamically scaled up and down.
- B. Ports on a vSS can only be statically scaled up or down.
- C. Ports on a vSS can only be dynamically scaled down.
- D. Ports on a vSS can only be dynamically scaled up.

**Correct Answer:** A

**Section:** (none)

**Explanation**

**Explanation/Reference:**

Explanation:

To ensure efficient use of host resources on hosts running ESXi 5.5 and later, the number of ports of standard switches are dynamically scaled up and down. A standard switch on such a host can expand up to the maximum number of ports supported on the host.

Reference: <https://pubs.vmware.com/vsphere-60/index.jsp?topic=%2Fcom.vmware.vsphere.networking.doc%2FGUID-350344DE-483A-42ED-B0E2C811EE927D59.html>

**QUESTION 16**

Which three connection types are available when configuring a vSwitch in the vSphere Web Client? (Choose three.)

- A. VMkernel Network Adapter
- B. Physical Network Adapter
- C. Virtual Machine Port Group for a Standard Switch
- D. vMotion Network Adapter
- E. vSAN Network Adapter

**Correct Answer:** ABC

**Section:** (none)

**Explanation**

**Explanation/Reference:**

Explanation:

Vmkernel network adapter, physical network adapter and virtual machine port group for standard switch are the connection types available when configuring Switch in vSphere client.

Reference: <https://pubs.vmware.com/vsphere-55/topic/com.vmware.ICbase/PDF/vsphere-esxi-vcenter-server-55-networking-guide.pdf>

**QUESTION 17**

Which two parameters are required when adding an iSCSI target to an iSCSI Software Adapter using Dynamic Discovery? (Choose two.)

- A. The iSCSI device's IP Address or Fully Qualified Domain Name
- B. The Port Number
- C. The iSCSI device's iSCSI Qualified Name (IQN)
- D. The Default Gateway IP Address

**Correct Answer:** AB

**Section:** (none)

**Explanation**

**Explanation/Reference:**

Explanation:

When adding an iSCSI target to an iSCSI software adapter using dynamic discovery, use iSCSI device IP address or FQDN. You can use port number to add iSCSI too.

Reference: [https://pubs.vmware.com/vsphere-50/topic/com.vmware.vcli.examples.doc\\_50/cli\\_manage\\_iscsi\\_storage.7.5.html](https://pubs.vmware.com/vsphere-50/topic/com.vmware.vcli.examples.doc_50/cli_manage_iscsi_storage.7.5.html)

**QUESTION 18**

What is true regarding datastores on ESXi 6.x?

- A. NFS 4.1 datastore does not support Fault Tolerance (FT)
- B. Both VMFS3 and VMFS5 datastores can be created
- C. NFS datastore can be mounted using NFS 4.1 on one ESXi host and NFS 3.0 on another
- D. NFS 3.0 datastore does not support Fault Tolerance (FT)

**Correct Answer:** A

**Section:** (none)

**Explanation**

**Explanation/Reference:**

Explanation:

VMs on NFS v4.1 support FT, as long as it is the new FT mechanism introduced in 6.0.

VMs running on NFS v4.1 do not support the old, legacy FT mechanism.

In vSphere 6.0, the newer Fault Tolerance mechanism can accommodate symmetric multiprocessor (SMP) virtual machines with up to four vCPUs. Earlier versions of vSphere used a different technology for Fault Tolerance (now known as legacy FT), with different requirements and characteristics (including a limitation of single vCPUs for legacy FT VMs).

Reference: <http://vsphere-land.com/news/nfs-4-1-support-in-vsphere-limitations-and-caveats.html>

**QUESTION 19**

Which type of Adapter does not require vmkernel networking?

- A. Independent Hardware iSCSI Adapter
- B. Dependent Hardware iSCSI Adapter
- C. Software iSCSI Adapter
- D. Software FCoE Adapter

**Correct Answer:** A

**Section:** (none)

**Explanation**

**Explanation/Reference:**

Explanation:

Independent Hardware iSCSI adapter does not require vmkernel networking.

Reference: <https://pubs.vmware.com/vsphere-55/index.jsp?topic=%2Fcom.vmware.vsphere.storage.doc%2FGUID-C476065E-C02F-47FA-A5F73B3F2FD40EA8.html>

#### QUESTION 20

What are two benefits of using NFS 4.1 with vSphere 6.x as compared to NFS 3? (Choose two.)



<https://vceplus.com/>

- A. NFS 4.1 supports Kerberos Authentication
- B. NFS 4.1 supports multipathing
- C. NFS 4.1 supports IPv6
- D. NFS 4.1 supports hardware acceleration



**Correct Answer:** AB

**Section:** (none)

**Explanation**

**Explanation/Reference:**

Explanation:

NFS 4.1 support kerberos authentication and multipathing.

Reference: <http://searchvmware.techtarget.com/answer/What-are-the-implications-of-NFS-41-in-vSphere-6>

#### QUESTION 21

Which two storage controller configurations can be used with Virtual SAN? (Choose two.)

- A. SAS controllers in Passthrough mode
- B. SAS controllers in RAID0 mode
- C. SAS controllers in RAID1 mode
- D. SAS controllers in RAID10 mode

**Correct Answer:** AB

**Section:** (none)

**Explanation**

**Explanation/Reference:**

Explanation:

SAS controllers in passthrough mode and in RAID 0 mode can be used with virtual SAN.

Reference: <http://blogs.vmware.com/vsphere/2014/01/virtual-san-hardware-guidance-part-ii-storage-controllers.html>

## QUESTION 22

A company has decided to implement Virtual SAN within their vSphere 6.x environment. The Virtual SAN cluster will be composed of three ESXi 6.x hosts that are on the Virtual SAN Ready Node list.

Each ESXi host includes:

- Two SAS Controllers that support Passthrough Mode
- Four Solid State Drives (SSDs) 1TB in size each
- 20 SAS Magnetic Disks (MDs) 1TB in size each
- The SSDs and MDs are evenly split between the two SAS controllers

The company will pilot a Virtual SAN cluster utilizing VMware best practices while maximizing storage capacity. The Virtual SAN cluster will use Manual Mode.

Which two Disk Group configurations would meet the stated configuration requirements? (Choose two.)

- A. 4 disk groups with 1 SSD and 5 MDs each
- B. 2 disk groups with 1 SSD and 7 MDs each
- C. 2 disk groups with 2 SSDs and 7 MDs each
- D. 2 disk groups with 1 SSD and 10 MDs each

**Correct Answer:** AB

**Section:** (none)

**Explanation**

**Explanation/Reference:**

Explanation:

4 disk groups with 1 SSD and 5 Mds each and 2 disk groups with 1 SSD and 7 Mds each can meet the configuration requirements in the scenario.

Reference: <https://pubs.vmware.com/vsphere-60/topic/com.vmware.ICbase/PDF/virtual-san-60-administration-guide.pdf>

## QUESTION 23

An administrator is creating a new Virtual SAN cluster on a Layer 2 network. There is an existing Virtual SAN cluster on the same Layer 2 network.

Which two actions would allow the new Virtual SAN cluster to coexist with the older cluster? (Choose two.)

- A. Change the default Multicast Address on the new Virtual SAN cluster.
- B. Change the default Unicast Address on the new Virtual SAN Cluster.
- C. Create a separate VLAN for each cluster.
- D. Create an ARP Alias for the Virtual SAN VMkernel Network Adapter.

**Correct Answer:** AB

**Section:** (none)

**Explanation**

**Explanation/Reference:**

Explanation:

To configure virtual san cluster to coexist with older cluster, you need to change the default multicast address on the new virtual san cluster and change the default unicast address on the new virtual san cluster.

Reference: <https://pubs.vmware.com/vsphere-55/index.jsp?topic=%2Fcom.vmware.vsphere.storage.doc%2FGUID-5656EA30-F7C7-494C-A356E1471942625A.html>

#### QUESTION 24

Which two Virtual SAN related actions might start resynchronization of virtual machine objects? (Choose two.)

- A. Editing a virtual machine storage policy to increase the number of replicas.
- B. Editing a virtual machine storage policy to reduce the number of replicas.
- C. Editing a virtual machine storage policy to increase the number of disk stripes.
- D. Editing a virtual machine storage policy to reduce the number of disk stripes.

**Correct Answer:** AC

**Section:** (none)

**Explanation**

**Explanation/Reference:**

Explanation:

Editing a virtual machine storage policy to increase the number of replicas and the number of disk stripes with start resync of virtual machine objects.

Reference: <https://www.vmware.com/support/vsphere6/doc/vmware-virtual-san-60-release-notes.html>

#### QUESTION 25

Which two NFS Protocol versions does vSphere 6 support? (Choose two.)

- A. Version 3
- B. Version 3.1 C. Version 4
- D. Version 4.1

**Correct Answer:** AD

**Section:** (none)

**Explanation**

**Explanation/Reference:**

Explanation:

ESXi supports NFS protocols version 3 and 4.1. To support both versions, ESXi uses two different NFS clients.

Reference: <https://pubs.vmware.com/vsphere-60/index.jsp?topic=%2Fcom.vmware.vsphere.storage.doc%2FGUID-8A929FE4-1207-4CC5-A0867016D73C328F.html>

#### QUESTION 26

An administrator attempts to create a Thick Provisioned Virtual Disk (VMDK) on an NFS datastore; but it fails.

Which two reasons would explain the failure? (Choose two.)

- A. Datastore is on an NFS 3 storage server that does not support Hardware Acceleration
- B. Datastore is on an NFS 4.1 storage server
- C. Only VMFS datastores support "Thick Provisioned" VMDK
- D. The NFS datastore was not created on a "Thick Provisioned" device

**Correct Answer:** AB

**Section:** (none)

**Explanation**

**Explanation/Reference:**

Explanation:

NFS datastores with Hardware Acceleration and VMFS datastores support the following disk provisioning policies. On NFS datastores that do not support Hardware

Acceleration, only thin format is available

Reference: <https://communities.vmware.com/thread/447915?start=0&tstart=0>

#### QUESTION 27

What condition would prevent an administrator from creating a new VMFS3 datastore on an ESXi 6.x host using the vSphere Web Client?



- A. A VMFS3 datastore cannot be created on an ESXi 6.x host.
- B. The VMFS3 kernel module is not loaded.
- C. A VMFS3 datastore cannot be mounted on an ESXi 6.x host.
- D. VMFS3 datastores are not compatible with virtual machines created on an ESXi 6.x host.

**Correct Answer:** A

**Section:** (none)

**Explanation**

**Explanation/Reference:**

Explanation:

VMFS3 datastore is not support on ESXi 6.x host.

Reference: <https://pubs.vmware.com/vsphere-60/index.jsp?topic=%2Fcom.vmware.vsphere.storage.doc%2FGUID-5EE84941-366D-4D37-8B7B767D08928888.html>

#### QUESTION 28

Which two statements are true about VMFS5 datastores on ESXi 6.x? (Choose two.)

- A. Virtual Disk (VMDK) size can be larger than 2TB.
- B. Datastore extent size can be larger than 2TB.
- C. Only Physical Mode Raw Device Map (Passthrough-RDM) can be larger than 2TB.
- D. 2MB block size is required to support larger than 2TB file size.

**Correct Answer:** AB

**Section:** (none)

**Explanation**

**Explanation/Reference:**

Explanation:

The maximum supported size of a virtual mode Raw Device Mapping (vRDM) has also been increased from 2 TB to 62 TB.

A VMDK larger than 2 TB can be created on a virtual machine that is powered on or off, but extending a VMDK beyond 2 TB is only supported when the virtual machine is powered off.

Reference: [https://kb.vmware.com/selfservice/microsites/search.do?language=en\\_US&cmd=displayKC&externalId=2058287](https://kb.vmware.com/selfservice/microsites/search.do?language=en_US&cmd=displayKC&externalId=2058287)

#### QUESTION 29

Which three conditions would prevent Storage I/O Control from being enabled on a group of datastores? (Choose three.)

- A. The datastores planned for the solution are used by different vSphere clusters.

- B. A datastore planned for the solution is configured as a Raw Device Mapping file.
- C. A datastore planned for the solution has three extents.
- D. A datastore planned for the solution is configured as NFS.
- E. The organization has an Enterprise license.

**Correct Answer:** BCE

**Section:** (none)

**Explanation**

**Explanation/Reference:**

Explanation:

Datastore planned for solution is configured as RDM file. When the datastore has three extents and the organization has an enterprise license, storage I/O control will not be enabled on a group of datastores.

Reference: [https://kb.vmware.com/selfservice/microsites/search.do?language=en\\_US&cmd=displayKC&externalId=1022091](https://kb.vmware.com/selfservice/microsites/search.do?language=en_US&cmd=displayKC&externalId=1022091)

### QUESTION 30

When is it possible to place a VMFS5 datastore in maintenance mode?

- A. When it is a member of a Storage DRS cluster
- B. When it is a member of Virtual SAN cluster
- C. When it is a member of a multi-extent datastore
- D. When it is a member of a Virtual Volume



**Correct Answer:** A

**Section:** (none)

**Explanation**

**Explanation/Reference:**

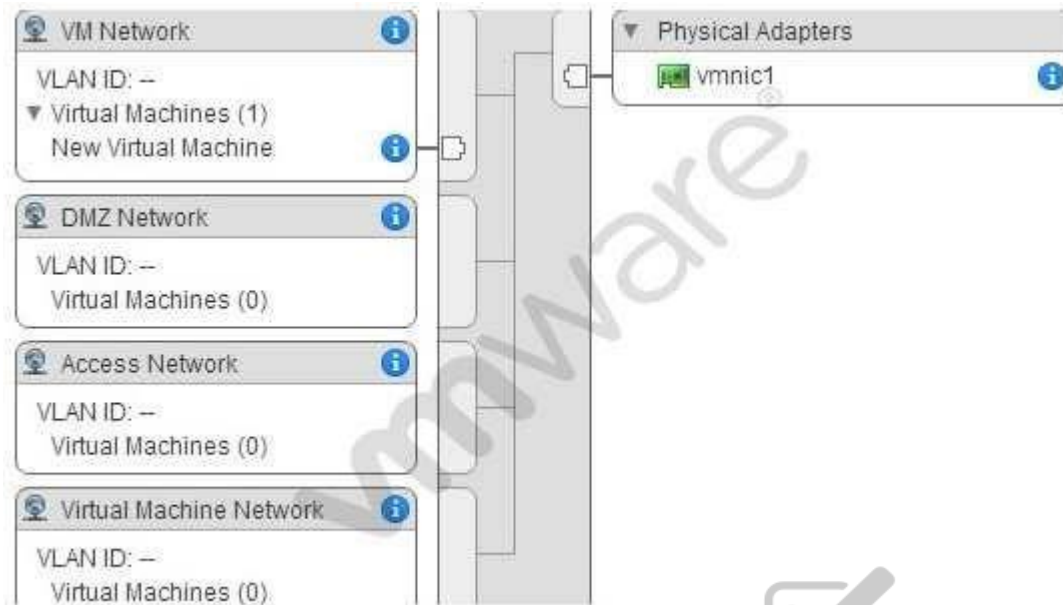
Explanation:

Storage DRS introduced the feature Datastore Maintenance mode and this new feature can be compared to Host Maintenance Mode. When a datastore is placed in Maintenance Mode all registered virtual machines on that datastore, are migrated to the other datastores in the datastore cluster. Datastore maintenance mode can be used to safely migrate virtual machines out of the datastore for storage array related maintenance operations such as migrating a LUN to another RAID group, however it is also an excellent feature that can help you during a storage migration project migrating virtual machines from standalone VMFS3 datastores to VMFS5 datastores aggregated in a Storage DRS datastore cluster.

Reference: <https://blogs.vmware.com/vsphere/2012/04/using-datastore-maintenance-mode-for-migration-virtual-machines-to-datastore-clusters.html>

### QUESTION 31

Refer to the Exhibit.



A vSphere 6.x Standard Switch is configured with 4 virtual machine portgroups, as shown in the exhibit.

Which portgroup would be utilized by default when creating a new virtual machine?

- A. Access Network
- B. DMZ Network
- C. VM Network
- D. Virtual Machine Network

**Correct Answer:** A

**Section:** (none)

**Explanation**

**Explanation/Reference:**

Explanation:

Access network will be utilized by default when creating a new virtual machine as can be seen in the exhibit.

Reference:

**QUESTION 32**

You are creating a virtual machine in the Web Client using the New Virtual Machine wizard.

Which two steps are required? (Choose two.)

- A. Select a valid name.
- B. Select a cluster for the compute resource.
- C. Select a network adapter.
- D. Select the virtual machine compatibility.

**Correct Answer:** AD

**Section:** (none)

**Explanation**

**Explanation/Reference:**

Explanation:

When you create a virtual machine, you provide a unique name for it. The unique name distinguishes it from existing virtual machines in the virtual machine folder or datacenter. The name can contain up to 80 characters. You can select a datacenter or folder location for the virtual machine, depending on your organizational needs.

You can accept the default ESXi host version for this virtual machine or select a different version, depending on the hosts in your environment.

Reference: [https://pubs.vmware.com/vsphere-51/index.jsp?topic=%2Fcom.vmware.vsphere.vm\\_admin.doc%2FGUID-AE8AFBF1-75D1-4172-988C378C35C9FAF2.html](https://pubs.vmware.com/vsphere-51/index.jsp?topic=%2Fcom.vmware.vsphere.vm_admin.doc%2FGUID-AE8AFBF1-75D1-4172-988C378C35C9FAF2.html)

**QUESTION 33**

From which two locations in the inventory hierarchy can you deploy a virtual machine using a template? (Choose two.)

- A. Directly from the template.
- B. From a compute resource.
- C. From an existing virtual machine.
- D. From a Datastore.

**Correct Answer:** AB

**Section:** (none)

**Explanation**

**Explanation/Reference:**

Explanation:

You can deploy a virtual machine directly from the template. A compute resource can also be used for deploying a VM.

Reference: <https://pubs.vmware.com/vsphere-60/topic/com.vmware.ICbase/PDF/vsphere-esxi-vcenter-server-60-virtual-machine-admin-guide.pdf>

#### QUESTION 34

An administrator is deploying multiple Windows 2003 Virtual Machines from the same template.

What two steps should be taken to avoid network conflicts? (Choose two.)

- A. Customize the guest operating system.
- B. Install VMware Tools into the new virtual machines.
- C. Copy the Microsoft Sysprep tools onto the vCenter Server system.
- D. Ensure the e1000 vmnic is selected for each new virtual machine.

**Correct Answer:** AC

**Section:** (none)

**Explanation**

**Explanation/Reference:**

Explanation:

To avoid such network or software conflicts, its recommended to customize the VM Guest during the deployment process. For Guest OS customization of virtual machines deployed from templates, vCenter requires the following:

- If the guest OS is Windows, you need VMware Tools and Sysprep utils to be installed within the templates:
- You will need to copy Sysprep tools to vCenter for Windows 2000, XP & 2003. Starting with Windows Vista onward, Sysprep tools are part of the base OS install.

Reference: <https://virtual-drive.in/2015/02/08/what-are-virtual-machine-templates/>

#### QUESTION 35

An ESXi 6.x host consists of 24 logical cores. Hyperthreading is enabled on the host.

What is the maximum number of vCPUs that can be assigned to a virtual machine on this host?

- A. 24
- B. 48
- C. 64
- D. 128

**Correct Answer:** A

**Section:** (none)

## Explanation

### Explanation/Reference:

Explanation:

A total of 24 vCPUs can be assigned to a virtual machine if hyperthreading is enabled.

Reference: <http://wahlnetwork.com/2013/09/30/hyper-threading-gotcha-virtual-machine-vcpu-sizing/>

### QUESTION 36

An administrator has an application that requires connection directly to PCI devices through a virtual machine.

What is a limitation of this configuration?

- A. Devices must be reserved for PCI passthrough on at least one host on which the virtual machine will run.
- B. Snapshots are not supported with DirectPath I/O devices.
- C. A maximum of 18 PCI DirectPath I/O devices can be added to a virtual machine.
- D. Only one PCI controller can be presented to the virtual machine.

**Correct Answer:** B

**Section:** (none)

**Explanation**



### Explanation/Reference:

Explanation:

Snapshots are not supported with PCI vSphere Direct Path I/O devices.

Reference: [https://pubs.vmware.com/vsphere-51/index.jsp?topic=%2Fcom.vmware.vsphere.vm\\_admin.doc%2FGUID-058AEDF0-117E-4E17-956D37181E22D499.html](https://pubs.vmware.com/vsphere-51/index.jsp?topic=%2Fcom.vmware.vsphere.vm_admin.doc%2FGUID-058AEDF0-117E-4E17-956D37181E22D499.html)

### QUESTION 37

Which method provides the best performance for the lowest resource cost when building a virtual machine for a single-threaded Windows application?

- A. Deploy single-threaded applications on uniprocessor virtual machines.
- B. Deploy single-threaded applications on symmetric multi-processor virtual machines.
- C. Tune single-threaded applications to take advantage of symmetric multi-processor resources.
- D. Tune Single-threaded applications at the hypervisor level.

**Correct Answer:** A

**Section:** (none)

**Explanation**

**Explanation/Reference:**

Explanation:

Virtual processors are not supported. You have to deploy single threaded applications on uniprocessor virtual machines.

Reference: <http://support.theenterprisecloud.com/kb/default.asp?id=343>

**QUESTION 38**

An administrator enables High Availability (HA) on a Virtual SAN cluster.

Which network is used for HA Network Heartbeat configuration?



<https://vceplus.com/>

- A. The Management network.
- B. The vMotion network.
- C. The Virtual SAN network.
- D. The Provisioning Traffic network.

**Correct Answer: C**

**Section: (none)**

**Explanation**

**Explanation/Reference:**

Explanation:

Virtual SAN network is used for HA Network heart beat configuration.

Reference: <https://pubs.vmware.com/vsphere-55/index.jsp?topic=%2Fcom.vmware.vsphere.storage.doc%2FGUID-D68890D8-841A-4BD1-ACA1DA3D25B6A37A.html>

**QUESTION 39**

What are three goals of resource management within a cluster? (Choose three.)

- A. To prevent virtual machines from monopolizing resources and to guarantee predictable service rates.
- B. To exploit undercommitted resources and overcommit with graceful degradation.
- C. To provide solutions to potential problems that you might encounter when using vCenter Server.
- D. To control the relative importance of virtual machines and provide flexible dynamic partitioning.
- E. To provide additional network administration capabilities.

**Correct Answer:** ABD

**Section:** (none)

**Explanation**

**Explanation/Reference:**

Explanation:

When managing your resources, you should be aware of what your goals are.

In addition to resolving resource overcommitment, resource management can help you accomplish the following:

- Performance Isolation—prevent virtual machines from monopolizing resources and guarantee predictable service rates.
- Efficient Utilization—exploit undercommitted resources and overcommit with graceful degradation.
- Easy Administration—control the relative importance of virtual machines, provide flexible dynamic partitioning, and meet absolute service-level agreements.

Reference: <https://pubs.vmware.com/vsphere-60/topic/com.vmware.ICbase/PDF/vsphere-esxi-vcenter-server-60-resource-management-guide.pdf>

#### **QUESTION 40**

Which three features can be enabled for a new host cluster? (Choose three.)

- A. Storage Distributed Resource Scheduling
- B. High Availability
- C. Fault Tolerance
- D. Distributed Resource Scheduling
- E. Virtual SAN

**Correct Answer:** BDE

**Section:** (none)

**Explanation**

**Explanation/Reference:**

Explanation:

On a new host cluster, high availability, distributed resource scheduling and virtual SAN can be enabled.

Reference: <https://pubs.vmware.com/vsphere-55/topic/com.vmware.vsphere.storage.doc/GUID-D68890D8-841A-4BD1-ACA1-DA3D25B6A37A.html>



**QUESTION 41**

An organization has an ESXi 6.x host that contains two resource pools. The host is being relocated to a DRS cluster.

What two actions can be taken to integrate the host into the cluster, and what would happen to the existing ESXi resource pool hierarchy as a result? (Choose two.)

- A. Place all of the host's virtual machines into the DRS cluster root resource pool. The resource pools present on the host will be deleted.
- B. Create a resource pool for the ESXi host's virtual machines and resource pools. The resource pools present on the host will be deleted.
- C. Place all of the host's virtual machines into the DRS cluster root resource pool. The resource pools present on the host will be preserved.
- D. Create a resource pool for the ESXi host's virtual machines and resource pools. The resource pools present on the host will be preserved.

**Correct Answer:** AD

**Section:** (none)

**Explanation**

**Explanation/Reference:**

Explanation:

First, place all of the host's virtual machines into DRS cluster root resources pool. The resource pool present on the host will be deleted. Create a resource pool for the ESXi host's virtual machines and resource pools. It will be preserved. Reference: <https://communities.vmware.com/thread/473862?start=0&tstart=0>

**QUESTION 42**

Which two events happen when Distributed Resource Scheduler (DRS) is disabled? (Choose two.)

- A. The cluster's resource pool heirarchy and affinity rules are re-established when DRS is turned back on.
- B. The cluster's resource pool hierarchy and affinity rules are not re-established when DRS is turned back on.
- C. The cluster's resource pools are removed from the cluster.
- D. The cluster's resource pools are removed from the cluster and assigned to the hosts.

**Correct Answer:** BC

**Section:** (none)

**Explanation**

**Explanation/Reference:**

Explanation:

When DRS is disabled, the cluster's resource pool hierarchy and affinity rules are not reestablished when DRS is turned back on. If you disable DRS, the resource pools are removed from the cluster. To avoid losing the resource pools, save a snapshot of the resource pool tree on your local machine. You can use the snapshot to restore the resource pool when you enable DRS.

Reference: <https://pubs.vmware.com/vsphere-51/index.jsp?topic=%2Fcom.vmware.vsphere.resmgmt.doc%2FGUID-2117087C-7418-4698-8CCFBDF361664A3A.html>

**QUESTION 43**

A High Availability (HA) cluster is configured to respond to a given number of host failures. The cluster contains virtual machines configured with these settings: ▪

- VM1 has a 1GHz CPU reservation and no Memory reservation
- VM2 has a 2GHz CPU reservation and no Memory reservation
- VM3 has no CPU reservation and no Memory reservation

Given this information, what is the correct slot size for the cluster?

- A. The CPU Reservation should be set to 32MHz and the memory reservation should be set to 32MB plus memory overhead.
- B. The CPU reservation should be set to 1 GHz and the memory reservation should be set to 0MB plus memory overhead.
- C. The CPU reservation should be set to 2 GHz, and the memory reservation should be set to 0MB plus the virtual machine memory overhead.
- D. The CPU reservation should be set to 2 GHz, and the memory reservation should be set to 32MB, plus the virtual machine memory overhead.

**Correct Answer:** C

**Section:** (none)

**Explanation**

**Explanation/Reference:**

Explanation:

Then HA will calculate how much resources are currently reserved for both memory and CPU for powered-on virtual machines. For CPU, those virtual machines that do not have a reservation larger than 32Mhz a default of 32Mhz will be used. For memory a default of 0MB+memory overhead will be used if there is no reservation set. If a reservation is set for memory it will use the reservation+memory overhead. Reference: <http://www.yellow-bricks.com/2012/06/20/ha-admission-control-basics-part-22/>

**QUESTION 44**

Which two High Availability (HA) Cluster admission control policies can help avoid resource fragmentation? (Choose two.)

- A. Define failover capacity by static number of hosts
- B. Define failover capacity by reserving a percentage of the cluster resources
- C. Use dedicated failover hosts
- D. Use Virtual Machine Monitoring

**Correct Answer:** AC

**Section:** (none)

**Explanation**

**Explanation/Reference:**

Explanation:

To avoid resource fragmentation, define failover capacity by static number of hosts and use dedicated failover hosts.

Reference: <https://pubs.vmware.com/vsphere-51/index.jsp?topic=%2Fcom.vmware.vsphere.avail.doc%2FGUID-C4059DB9-D673-45CB-918C68C87FEB060A.html>

#### QUESTION 45

What is a requirement when enabling a Virtual SAN cluster in an existing High Availability (HA) and Distributed Resource Scheduler (DRS) Cluster?

- A. Disable DRS and HA before enabling Virtual SAN
- B. Enable DRS before enabling Virtual SAN
- C. Disable HA before enabling Virtual SAN
- D. Enable Storage DRS before enabling Virtual SAN

**Correct Answer:** C

**Section:** (none)

**Explanation**

**Explanation/Reference:**

Explanation:

One of the requirement is to disable HA before enabling Virtual SAN.

Reference: <https://pubs.vmware.com/vsphere-60/topic/com.vmware.ICbase/PDF/virtual-san-60-administration-guide.pdf>

#### QUESTION 46

What must be enabled to ensure that VM Component Protection (VMCP) works in a High Availability cluster?

- A. VMware Tools Virtual Machine Communication Interface (VMCI)
- B. Fault Tolerance
- C. Atomic Test and Set (ATS)
- D. All Paths Down (APD) Timeout

**Correct Answer:** D

**Section:** (none)

**Explanation**

**Explanation/Reference:**

Explanation:

There are two types of datastore accessibility failure:

PDL (Permanent Device Loss) is an unrecoverable loss of accessibility that occurs when a storage device reports the datastore is no longer accessible by the host. This condition cannot be reverted without powering off virtual machines.

APD (All Paths Down) represents a transient or unknown accessibility loss or any other unidentified delay in I/O processing. This type of accessibility issue is recoverable.

Reference: <https://pubs.vmware.com/vsphere-60/index.jsp?topic=%2Fcom.vmware.vsphere.avail.doc%2FGUID-F01F7EB8-FF9D-45E2-A093-5F56A788D027.html>

#### QUESTION 47

An organization has a number of virtual machines that would benefit from Fault Tolerance. These include:

- A single vCPU Apache Server
- A dual vCPU vCenter Server
- A quad vCPU SQL Server
- An eight vCPU Hadoop Server

Which two virtual machines can be configured to use VMware Fault Tolerance? (Choose two.)

- A. Apache Server
- B. vCenter Server
- C. SQL Server
- D. Hadoop Server

**Correct Answer:** AC

**Section:** (none)

**Explanation**



**Explanation/Reference:**

Explanation:

Apache server and SQL server can be configured to use VMware fault tolerance.

Reference: [https://kb.vmware.com/selfservice/microsites/search.do?language=en\\_US&cmd=displayKC&externalId=1013428](https://kb.vmware.com/selfservice/microsites/search.do?language=en_US&cmd=displayKC&externalId=1013428)

#### QUESTION 48

Which three statements are true regarding Fault Tolerance? (Choose three.)

- A. Applications need to be continuously available to users.
- B. Applications without native clustering capabilities can be protected.
- C. Custom clustering solutions are complicated to configure and maintain.
- D. Applications that have 16 vCPUs are supported.
- E. Prevents application crashes by analyzing the workload and correcting problems.

**Correct Answer:** ABC

**Section:** (none)

**Explanation**

**Explanation/Reference:**

Explanation:

With Fault tolerance, applications need to be continuously available to users, application without native clustering capabilities can be protected and custom clustering solutions are complicated to configure and maintain.

Reference: <https://www.vmware.com/products/vsphere/features/availability>

**QUESTION 49**

Which three features are not supported when using Fault Tolerance in vSphere 6.x? (Choose three.)

- A. Virtual Volumes (VVOLS)
- B. Storage vMotion
- C. Virtual Machine Component Protection
- D. vMotion
- E. vSphere Distributed Switches

**Correct Answer:** ABC

**Section:** (none)

**Explanation**

**Explanation/Reference:**

Explanation:

Virtual volume, stage vmotion and virtual machine component protection are not support using FT in vSphere 6.x

Reference: <https://pubs.vmware.com/vsphere-60/topic/com.vmware.ICbase/PDF/vsphere-esxi-vcenter-server-60-availability-guide.pdf> (47 and 48)

**QUESTION 50**

What is true about resource pools created on a Distributed Resource Scheduler (DRS) cluster?

- A. A root resource pool is created with the specified values.
- B. A root resource pool is automatically created using the aggregate total of the ESXi host resources in the cluster.
- C. A root resource pool is automatically created using the aggregate total of all resources in the datacenter.
- D. A root resource pool is not needed when creating resource pools on a DRS cluster.

**Correct Answer:** B

**Section:** (none)

**Explanation**

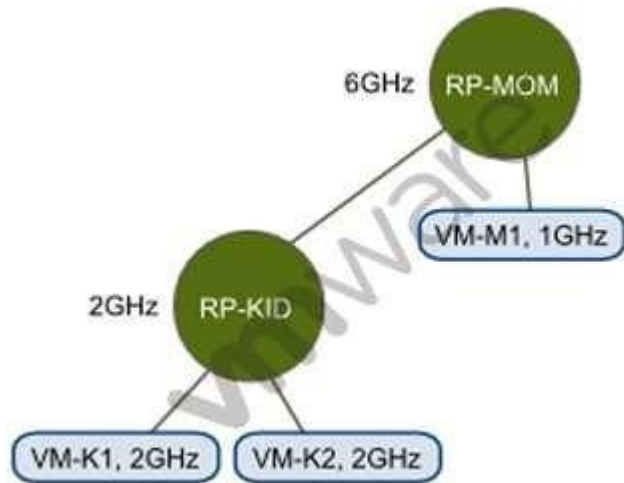
**Explanation/Reference:**

Explanation:

A root resource pool is automatically created using the aggregate total of the ESXi host resources in the cluster.  
Reference: [https://www.vmware.com/pdf/vmware\\_drs\\_wp.pdf](https://www.vmware.com/pdf/vmware_drs_wp.pdf)

### QUESTION 51

Refer to the Exhibit.



An administrator has created the resource pool configuration shown in the Exhibit.

Based on the exhibit, which virtual machine(s) can be successfully powered on?

- A. VM-M1 only
- B. VM-K1 only
- C. VM-K1 and VM-K2 only
- D. VM-K1, VM-K2, and VM-M1

**Correct Answer:** D

**Section:** (none)

**Explanation**

**Explanation/Reference:**

**QUESTION 52**

An administrator is moving a virtual machine into a resource pool. The VM and resource pool are configured as shown:

VM configuration:

- 2GHz CPU reservation
- 1GB Memory limit

Resource Pool configuration: ▪

- 6GHz CPU reservation
- 1GB Memory reservation
- No limit to memory

What happens to the virtual machine's resource settings when it is moved into the pool?

- A. The VM inherits the resource settings of the resource pool if expandable reservations is enabled.
- B. The VM's reservations and limits are ignored and removed.
- C. The VM keeps the 2GHz CPU reservation but receives the 1GB memory reservation.
- D. The VM keeps the 2GHz CPU reservation and the 1GB Memory limit.

**Correct Answer:** D

**Section:** (none)

**Explanation**

**Explanation/Reference:**

Explanation:

When the VM is moved into the pool, it keeps the 2 GHz CPU reservation and 1 GB memory limit.

Reference: <https://pubs.vmware.com/vsphere-60/topic/com.vmware.ICbase/PDF/vsphere-esxi-vcenter-server-60-resource-management-guide.pdf>

**QUESTION 53**

Which two statements are true regarding VMware vSphere Flash Read Cache (vFRC)? (Choose two.)

- A. Cache fills and cache evictions happen in the granularity of a cache block size.
- B. vFRC caches data from both read and write I/Os, but write I/Os are always serviced by the underlying storage.
- C. vFRC caches data from both read and write I/Os, but write I/Os are always serviced by the underlying cache data.
- D. Cache fills and cache evictions happen in the granularity of the disk block size.

**Correct Answer:** AB

**Section:** (none)

## Explanation

### Explanation/Reference:

Explanation:

Cache fills and cache evictions happen in the granularity of a cache block size. This value ranges from 4KB to 1MB to enable you to best configure your cache block size based on the I/O size of workloads. Even though cache fills and cache evictions happen in the granularity of a cache block size, actual read I/O serviced by the cache can be smaller than the cache block size. For example, if the cache block size is 64KB, and a 4KB read I/O request is issued by the guest virtual machine, and if the data is not available in the cache, a 4KB read is issued to the VMDK. When populating the cache, the vFRC algorithm looks for a 64KB region to place the new 4KB data. If no free space is available, a 64KB region is evicted and the space is used to hold the new 4KB data. The remaining 60KB region in the

64KB cache block is marked as invalid. The cache block size parameter therefore has profound effects on performance

Reference: <https://www.vmware.com/files/pdf/techpaper/vfrc-perf-vsphere55.pdf>

### QUESTION 54

An administrator is tasked with performing a vMotion migration of a virtual machine. The virtual machine is configured as follows:

- vSphere Flash Read Cache (vFRC) enabled
- Is part of a Distributed Resource Cluster (DRS) Cluster

Which two statements are true? (Choose two.)

- A. Each ESXi host in the cluster supports multiple virtual flash resources.
- B. Each ESXi host in the cluster supports one virtual flash resource.
- C. DRS treats powered-on virtual machines with Flash Read Cache as having a preferred affinity to their current host and moves them only for mandatory reasons.
- D. DRS treats powered-on virtual machines with Flash Read Cache as having a required affinity to their current host and does not move them.

**Correct Answer:** BC

**Section:** (none)

**Explanation**

### Explanation/Reference:

Explanation:

Each ESXi host in the cluster supports one virtual flash resource. Secondly, DRS treats powered-on virtual machines with Flash Read Cache as having a preferred affinity to the current host.

Reference: <http://www.yellow-bricks.com/2013/09/11/frequently-asked-questions-vsphere-flash-read-cache/>

### QUESTION 55

Which two actions are required when enabling vFlash Read Cache for a virtual machine's virtual disk? (Choose two.)



- A. A value in the Virtual Flash Read Cache text box must be entered.
- B. A Flash Resource Pool for Cache size reservation must be entered.
- C. The Device backing and the block size must be configured.
- D. The Enable virtual flash host swap cache check box must be selected.

**Correct Answer:** AD

**Section:** (none)

**Explanation**

**Explanation/Reference:**

Explanation:

To enable vFlash Read cache for VM virtual disk, enter a value in virtual flash read cache text box and enable virtual flash host swap cache check box.

Reference: <http://www.yellow-bricks.com/2013/08/26/introduction-to-vsphere-flash-read-cache-aka-vflash/>

#### QUESTION 56

vMotion can be performed between which three physical boundaries? (Choose three.)



<https://vceplus.com/>

- A. Between two vCenter Server Systems
- B. Between two vSphere Distributed Virtual Switches
- C. Between two vCenter Server Datacenter objects
- D. Between two VMware NSX Layer 4 segments
- E. Between two NFS datastores

**Correct Answer:** ABC

**Section:** (none)

**Explanation**

**Explanation/Reference:**

Explanation:

vMotion can be performed between two vCenter servers, two vsphere distributed virtual switches and between two vcenter server datacenter objects.

Reference: <https://www.vmware.com/products/vsphere/features/vmotion>

#### QUESTION 57

Which three operations occur during a cold migration of a virtual machine? (Choose three.)

- A. The virtual machine disks are moved if the datastore is being changed.
- B. The virtual machine is registered with the destination server.
- C. The source virtual machine is removed from the old hosts.
- D. The virtual machine hardware is upgraded.
- E. The virtual machine files are quiesced prior to the migration.

**Correct Answer:** ABC

**Section:** (none)

**Explanation**

**Explanation/Reference:**

Explanation:

First, the virtual machine disks are moved if the datastore is being changed, the virtual machine is registered with the destination server and the source virtual machine is removed from the old host/s.

Reference: [https://kb.vmware.com/selfservice/microsites/search.do?language=en\\_US&cmd=displayKC&externalId=1010045](https://kb.vmware.com/selfservice/microsites/search.do?language=en_US&cmd=displayKC&externalId=1010045)

#### QUESTION 58

An administrator needs to verify that vMotion operations can be performed in a vSphere data center.

What round trip time (RTT) latency is the maximum value that will allow vMotion operations to succeed?

- A. 50ms RTT
- B. 100ms RTT
- C. 150ms RTT
- D. 200ms RTT

**Correct Answer:** C

**Section:** (none)

**Explanation**

**Explanation/Reference:**

Explanation:

**QUESTION 59**

Which three are requirements when using vMotion to move a virtual machine across vCenter Server systems? (Choose three.)

- A. Both vCenter Servers must be using Enhanced Linked Mode.
- B. Both vCenter Servers must be in the same Single Sign-On Domain.
- C. Time must be synchronized.
- D. Duplicate VM MAC addresses must be configured.
- E. Both vCenter Servers must have High Availability enabled on source and destination clusters.

**Correct Answer:** ABC

**Section:** (none)

**Explanation**

**Explanation/Reference:**

Explanation:

Both of the vcenter servers must be using enhanced linked mode along with the same single sign-on domain. And the time must be synchronized.

Reference: [https://kb.vmware.com/selfservice/microsites/search.do?language=en\\_US&cmd=displayKC&externalId=2106952](https://kb.vmware.com/selfservice/microsites/search.do?language=en_US&cmd=displayKC&externalId=2106952)

**QUESTION 60**

An administrator is migrating a virtual machine from a Test cluster to a Production cluster. The two environments do not have any shared storage.

What is the easiest way to accomplish this task?

- A. Perform a Storage vMotion.
- B. Perform a regular vMotion.
- C. Perform a Virtual to Virtual migration.
- D. Perform a backup and restore using VMware Data Protection.

**Correct Answer:** B

**Section:** (none)

**Explanation**

**Explanation/Reference:**

**QUESTION 61**

What is a benefit of using Enhanced vMotion Compatibility for an environment?

- A. EVC masks CPU features to allow compatibility between hosts that are dissimilar.
- B. EVC allows for cross platform vMotion to occur.
- C. EVC enables Long Distance vMotion.
- D. EVC enables Storage vMotion functionality.

**Correct Answer:** A

**Section:** (none)

**Explanation**

**Explanation/Reference:**

Explanation:

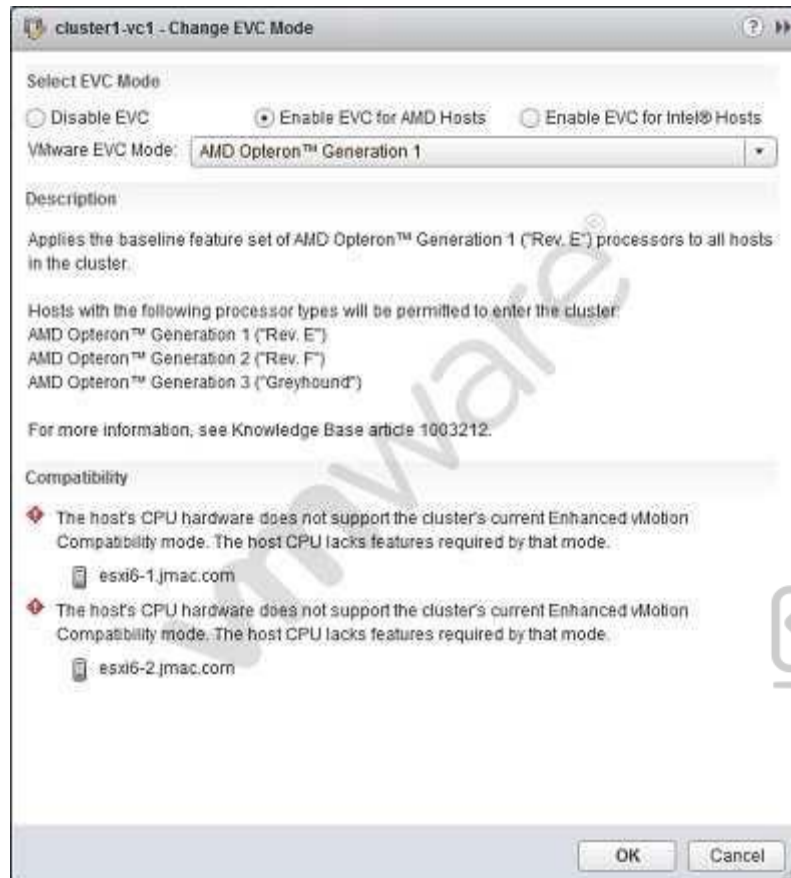
VMware Enhanced VMotion Compatibility (EVC) will mask CPU features at host level

Reference: <http://searchvmware.techtarget.com/tip/Avoiding-an-Enhanced-VMotion-Compatibility-gotcha>

**QUESTION 62**

Refer to the Exhibit.





An administrator attempts to enable Enhanced vMotion Compatibility (EVC) on a cluster. The operation results in a compatibility error, as shown in the exhibit.

What is the likely cause of this error?

- A. The CPUs in the ESXi host are not AMD CPUs.
- B. The CPUs in the ESXi host do not support hardware virtualization capabilities.
- C. The XD/NX CPU features have not been enabled in the BIOS of the server.
- D. There is no shared storage between the hosts in the cluster.

**Correct Answer: A**

**Section: (none)**

**Explanation**

**Explanation/Reference:**

Explanation:

In general, if a processor can support EVC level XN, it can also support levels XN-1 to X0. For example, a processor that supports the Intel® "Sandy Bridge" Generation EVC Baseline has an EVC level of L4. Therefore, it can also support EVC levels L3, L2, L1, and L0. However, it cannot support EVC level L5, which corresponds to the Intel® "Ivy Bridge" Generation. Intel EVC Baselines are listed in Table 1.1.

For AMD processors, there are two different sequences of EVC levels: Levels A0 to A3, which support the first 3 generations of AMD Opteron™ processors, and levels B0 and above, which support AMD Opteron™ Generation 3 and later processors.

Note: The AMD Opteron™ Generation 3 (no 3DNow!™) EVC baseline is common to both sequences. For example, an AMD processor that supports the AMD Opteron™ Generation 4 EVC baseline supports the AMD Opteron™ Generation 3 (no 3DNow!™) baseline, but not the AMD Opteron™ Generation 3 baseline. An AMD processor that supports the AMD Opteron™ Generation 3 baseline supports the AMD Opteron™ Generation 3 (no 3DNow!™) baseline, but not the AMD Opteron™ Generation 4 baseline.

Reference: [https://kb.vmware.com/selfservice/microsites/search.do?language=en\\_US&cmd=displayKC&externalId=1003212](https://kb.vmware.com/selfservice/microsites/search.do?language=en_US&cmd=displayKC&externalId=1003212)

### QUESTION 63

An administrator is attempting to migrate a large Hadoop virtual machine using vMotion. The administrator notices a delay when the machine is quiesced. The Hadoop virtual machine is processing many transactions a second to an in-memory database.

Which two actions would help reduce the amount of time needed to perform a vMotion on this virtual machine? (Choose two.)

- A. Use multiple NICs for the vMotion vmkernel port.
- B. Use a 10Gbps Network card for the vMotion vmkernel port.
- C. Add an additional management network to help transmit the data quicker.
- D. Disable Fault Tolerance before performing the vMotion.

**Correct Answer: AB**

**Section: (none)**

**Explanation**

**Explanation/Reference:**

Explanation:

Use multiple NICs for the vmotion vmkernel port and a 10 Gbps network card for vMotion vmkernel port.

Reference: <http://www.yellow-bricks.com/2011/09/17/multiple-nic-vmotion-in-vsphere-5/>

### QUESTION 64

An administrator attempts to migrate a suspended virtual machine to a newly deployed vSphere 6.x cluster. The compatibility check fails.

What condition could cause this behavior?

- A. The new vSphere 6.x cluster is running Intel CPUs instead of AMD CPUs.
- B. A suspended virtual machine cannot be migrated.
- C. The hardware virtualization feature of the CPU is not enabled on the new hosts.
- D. A vSphere Distributed Switch is required to migrate a suspended virtual machine.

**Correct Answer:** A

**Section:** (none)

**Explanation**

**Explanation/Reference:**

Explanation:

The probable cause might be that the new vSphere 6.x cluster is running Intel CPUs instead of AMD CPUs. AMD CPUs are not compatible with Intel because of the difference of processor architecture.

Reference: [https://kb.vmware.com/selfservice/microsites/search.do?language=en\\_US&cmd=displayKC&externalId=1005764](https://kb.vmware.com/selfservice/microsites/search.do?language=en_US&cmd=displayKC&externalId=1005764)

#### QUESTION 65

An administrator must determine an appropriate backup solution, given these conditions:

- 50 of the virtual machines are in a resource pool named Finance.
- 50 of the virtual machines are in a resource pool named QA.

Which solution allows an administrator the ability to backup 100 virtual machines?

- A. Use Snapshot Manager on the vCenter Server to backup the virtual machines.
- B. Use the VMware Consolidated Backup (vcb) tool on the ESXi Host to backup the virtual machines.
- C. Use the VMware Data Recovery (VDR) Appliance on the vCenter Server to backup the virtual machines.
- D. Use the VMware Data Protection (VDP) Appliance on one of the ESXi Hosts to backup the virtual machines.

**Correct Answer:** D

**Section:** (none)

**Explanation**

**Explanation/Reference:**

Explanation:

VDP supports these specifications:

- Each vCenter Server can support up to 10 VDP appliances.
- Each VDP appliance supports backup for up to 100 virtual machines.
- Only 1 VDP appliance can exist per ESXi/ESX host.
- Support for 0.5 TB, 1 TB, or 2 TB of deduplicated backup data.

Reference: [https://kb.vmware.com/selfservice/microsites/search.do?language=en\\_US&cmd=displayKC&externalId=2016565](https://kb.vmware.com/selfservice/microsites/search.do?language=en_US&cmd=displayKC&externalId=2016565)

#### QUESTION 66

A vSphere administrator needs to backup a virtual machine that has a Microsoft SQL Server Database installed.

Which solution allows for an application quiesce to occur during backup?

- A. VMware vCenter Converter
- B. VMware vCenter Site Recovery Manager
- C. VMware vSphere Replication
- D. VMware vSphere Data Protection

**Correct Answer:** D

**Section:** (none)

**Explanation**



**Explanation/Reference:**

Explanation:

VMware vSphere data protection advanced can be used for the application quiesce to occur during backup.

Reference: [https://kb.vmware.com/selfservice/microsites/search.do?language=en\\_US&cmd=displayKC&externalId=1031298](https://kb.vmware.com/selfservice/microsites/search.do?language=en_US&cmd=displayKC&externalId=1031298)

#### QUESTION 67

Which two statements are true about deploying and using vSphere Replication? (Choose two.)

- A. ESXi hosts managed by a single vCenter Server instance require a connection between the two vSphere Replication appliances.
- B. Sites managed by different vCenter Server instances require a connection between the two vSphere Replication appliances.
- C. Sites managed by different vCenter Server instances require the use of Site Recovery Manager and a connection between the two vSphere Replication appliances.
- D. ESXi hosts managed by a single vCenter Server instance require a single vSphere Replication appliance.

**Correct Answer:** BD

**Section:** (none)

**Explanation**



**Explanation/Reference:**

Explanation:

To use vSphere Replication between two sites managed by different vCenter Server instances, you must configure a connection between the two vSphere Replication appliances.

You can complete this process on either site on which you have installed a vSphere Replication appliance. If you are using an untrusted certificate, certificate warnings might appear during the process.

Alternatively, you can use vSphere Replication to replicate virtual machines between different ESXi hosts that the same vCenter Server manages. In this case, you deploy only one vSphere Replication appliance and you do not need to connect the primary and secondary sites.

Reference: [https://pubs.vmware.com/vsphere-51/index.jsp?topic=%2Fcom.vmware.vsphere.replication\\_admin.doc%2FGUID-FFBF959C-5C05-42C0-A2FE3688AD55B6EF.html](https://pubs.vmware.com/vsphere-51/index.jsp?topic=%2Fcom.vmware.vsphere.replication_admin.doc%2FGUID-FFBF959C-5C05-42C0-A2FE3688AD55B6EF.html)

**QUESTION 68**

An administrator is attempting to restore a number of files in a directory within the Operating System of a virtual machine.

How can the administrator restore the files from a previous backup?

- A. Use the File Level Restore option from the selected backup of the virtual machine in the vSphere Web Client.
- B. Connect to the File Level Restore tool from a web browser in the virtual machine.
- C. Connect to the File Level Restore tool from the VMware Data Protection appliance.
- D. Use the File Level Restore option from the selected backup of the virtual machine in the vSphere Client.

**Correct Answer: B**

**Section: (none)**

**Explanation**

**Explanation/Reference:**

Explanation:

The file-level restore is web-based, so a supported web browser is required.

Reference: [https://kb.vmware.com/selfservice/microsites/search.do?language=en\\_US&cmd=displayKC&externalId=2016565](https://kb.vmware.com/selfservice/microsites/search.do?language=en_US&cmd=displayKC&externalId=2016565)

**QUESTION 69**

What are three valid disk configurations for the vSphere Data Protection 6.x Appliance? (Choose three.)

- A. 500GB
- B. 1TB
- C. 1.5TB
- D. 2TB
- E. 4TB

**Correct Answer:** ABC

**Section:** (none)

**Explanation**

**Explanation/Reference:**

Explanation:

VDP supports these specifications:

- Each vCenter Server can support up to 10 VDP appliances.
- Each VDP appliance supports backup for up to 100 virtual machines.
- Only 1 VDP appliance can exist per ESXi/ESX host.
- Support for 0.5 TB, 1 TB, or 2 TB of deduplicated backup data.

Reference: [https://kb.vmware.com/selfservice/microsites/search.do?language=en\\_US&cmd=displayKC&externalId=2016565](https://kb.vmware.com/selfservice/microsites/search.do?language=en_US&cmd=displayKC&externalId=2016565)

#### **QUESTION 70**

What is a benefit of using VMware Data Protection (VDP)?

- A. Provides support for guest-level backups and restores of Microsoft SQL Servers, Exchange Servers, and Share Point Servers.
- B. Provides support for advanced storage services including replication, encryption, deduplication, and compression.
- C. Provides direct access to VDP configuration integrated into the vSphere Client.
- D. Reduces disk space consumed by virtual machine data using deduplication.

**Correct Answer:** D

**Section:** (none)

**Explanation**

**Explanation/Reference:**

Explanation:

VDP reduces disk space consumed by virtual machine data using deduplication.

Reference: <https://www.vmware.com/files/pdf/techpaper/Introduction-to-Data-Protection.pdf>

#### **QUESTION 71**

When configuring vSphere Replication for a virtual machine, what is the lowest Recovery Point Objective (RPO) that can be selected?

- A. 1 min
- B. 5 min
- C. 10 min
- D. 15min

**Correct Answer:** D

**Section:** (none)

**Explanation**

**Explanation/Reference:**

Explanation:

The available range is from 15 minutes to 24 hours.

Reference: [https://pubs.vmware.com/vsphere-51/index.jsp?topic=%2Fcom.vmware.vsphere.replication\\_admin.doc%2FGUID-C249300C-2BC0-4128-88B5046C3DE6BC5B.html](https://pubs.vmware.com/vsphere-51/index.jsp?topic=%2Fcom.vmware.vsphere.replication_admin.doc%2FGUID-C249300C-2BC0-4128-88B5046C3DE6BC5B.html)

### QUESTION 72

An administrator configures vSphere Replication for a virtual machine and enables multiple point in time (PIT) instances under the recovery settings in the Configure Replication wizard.

Which two statements are correct for vSphere Replication with multiple point in time instances enabled? (Choose two.)

- A. vSphere Replication retains a number of snapshot instances of the virtual machine on the target site based on the retention policy that you specify.
- B. vSphere Replication uses the virtual machine's snapshot instances to define the target site Point in Time instance based on the retention policy that you specify.
- C. vSphere Replication does not support virtual machines with snapshots.
- D. vSphere Replication supports virtual machines with snapshots.

**Correct Answer:** AD

**Section:** (none)

**Explanation**

**Explanation/Reference:**

Explanation:

When you configure replication of a virtual machine, you can enable multiple point in time (PIT) instances in the recovery settings in the Configure Replication wizard. vSphere Replication retains a number of snapshot instances of the virtual machine on the target site based on the retention policy that you specify.

vSphere Replication supports maximum of 24 snapshot instances. After you recover a virtual machine, you can revert it to a specific snapshot.

During replication, vSphere Replication replicates all aspects of the virtual machine to the target site, including any potential viruses and corrupted applications. If a virtual machine suffers from a virus or corruption and you have configured vSphere Replication to keep PIT snapshots, you can recover the virtual machine and then revert it to a snapshot of the virtual machine in its uncorrupted state.

Reference: <https://pubs.vmware.com/srm-55/index.jsp?topic=%2Fcom.vmware.srm.admin.doc%2FGUID-F3C8A2E9-183E-4DFF-A7D1-43CAEE584149.html>

### QUESTION 73

Which three actions can be taken as a result of executing the vSphere Update Manager 6.x scan and remediation wizards? (Choose three.)

- A. Install and upgrade software in virtual machines.

- B. Upgrade the firmware on ESXi host devices.
- C. Upgrade and Patch ESXi hosts.
- D. Install and update third-party software on hosts.
- E. Upgrade virtual machine hardware.

**Correct Answer:** CDE

**Section:** (none)

**Explanation**

**Explanation/Reference:**

Explanation:

vSphere Update Manager 6.x scan and remediation wizards offer upgrade and patch ESXi hosts, install and update third-party software and upgrade virtual machine hardware.

Reference: [http://www.vmware.com/pdf/vsp\\_vum\\_40\\_admin\\_guide.pdf](http://www.vmware.com/pdf/vsp_vum_40_admin_guide.pdf)

#### QUESTION 74

An administrator is unable to remove an ESXi 6.x host from a vSphere Distributed Switch.

What are two likely reasons for this issue? (Choose two.)

- A. Vmkernel interfaces on the switch are still in use.
- B. VM Network port group adapters are connected to different switch.
- C. Physical NICs are migrated to different switch.
- D. VM Network adapters are connected to this switch.

**Correct Answer:** AD

**Section:** (none)

**Explanation**

**Explanation/Reference:**

Explanation:

You cannot remove the host from the distributed switch or delete the host proxy switch because of the following reasons.

There are VMkernel adapters on the switch that are in use.

There are virtual machine network adapters connected to the switch.

Reference: <https://pubs.vmware.com/vsphere-55/index.jsp?topic=%2Fcom.vmware.vsphere.troubleshooting.doc%2FGUID-038AC93F-D710-48ED-8E3B258A23FB2930.html>

**QUESTION 75**

An administrator is attempting to enable Storage I/O Control on a datastore, but it is failing.

What is the likely reason for this failure?

- A. The host is connected to a datastore is running on ESX 4.0.
- B. The host is connected to a Fibre Channel storage array.
- C. The datastore has multiple extents.
- D. The datastore is managed by a single vCenter Server.

**Correct Answer:** A

**Section:** (none)

**Explanation**

**Explanation/Reference:**

Explanation:

If you experience problems with SIOC or if the number of hosts connected to the datastore has changed since enabling SIOC:

Disable SIOC and save the changes by clicking OK.

Enable SIOC and save the changes.

Reference: [https://kb.vmware.com/selfservice/microsites/search.do?language=en\\_US&cmd=displayKC&externalId=1022091](https://kb.vmware.com/selfservice/microsites/search.do?language=en_US&cmd=displayKC&externalId=1022091)

**QUESTION 76**

Which scenario shows a reason for VMware Tools failing to install?

- A. Virtual machine has a CD-ROM configured.
- B. Guest OS Antivirus is blocking the VMware Tools installation.
- C. Guest OS has 64-bit ldd (list dynamic dependencies) utility installed.
- D. Virtual machine is powered on.

**Correct Answer:** B

**Section:** (none)

**Explanation**

**Explanation/Reference:**

Explanation:

One of the reasons for VMware tools to fail during installation is that the Guest OS antivirus is blocking the installation thinking it is a malware.

Reference: <https://www.vmware.com/pdf/vmware-tools-installation-configuration.pdf>

**QUESTION 77**

What are two possible causes of Storage Distributed Resource Scheduler (SDRS) being disabled on one or more virtual machine disks in a datastore cluster?  
(Choose two.)

- A. The virtual machine has vSphere Fault Tolerance disabled.
- B. The virtual machine is a template.
- C. The virtual machine swap file is on a shared datastore.
- D. The disk is a CD-ROM/ISO file.

**Correct Answer:** BD

**Section:** (none)

**Explanation**

**Explanation/Reference:**

Explanation:

Possible causes of SDRS being disabled might be related to the fact that the virtual machine is a template or the disk is a CD-ROM or an ISO file.

**QUESTION 78**

What may be a cause for failure to unmount an NFS datastore?

- A. It has active snapshot files.
- B. It is being used for High Availability (HA) heartbeat.
- C. It is part of a Cluster.
- D. It is managed by Distributed Resource Scheduler (DRS).

**Correct Answer:** B

**Section:** (none)

**Explanation**

**Explanation/Reference:**

Explanation:

vSphere HA heartbeating does not prevent you from unmounting the datastore. If a datastore is used for heartbeating, unmounting it might cause the host to fail and restart any active virtual machine. If the heartbeating check fails, the vSphere Client displays a warning.

Reference: [https://pubs.vmware.com/vsphere-50/index.jsp?topic=%2Fcom.vmware.vsphere.storage.doc\\_50%2FGUID-1B56EF97-F60E-4F21-82A78F2A7294604D.html](https://pubs.vmware.com/vsphere-50/index.jsp?topic=%2Fcom.vmware.vsphere.storage.doc_50%2FGUID-1B56EF97-F60E-4F21-82A78F2A7294604D.html)

**QUESTION 79**

An administrator is troubleshooting basic network connectivity issues.

Which two scenarios are potential issues that this administrator might face? (Choose two.)

- A. The vSwitch is not attached to the correct physical network.
- B. The portgroup is not configured to use correct VLAN.
- C. Traffic shaping is configured incorrectly.
- D. Jumbo frames is configured incorrectly.

**Correct Answer:** AB

**Section:** (none)

**Explanation**

**Explanation/Reference:**

Explanation:

Common network connectivity issues can happen anytime during the operation. The vSwitch is not attached to the correct physical network or the portgroup is not configured to use correct VLAN might be some of the causes that admin has to face during network connectivity. Reference:

<http://blogs.vmware.com/kb/2013/02/troubleshooting-network-teaming-problems-in-esxesxi.html>

#### QUESTION 80

Why are some virtual machines orphaned after rebooting a High Availability (HA) enabled host?

- A. The Orphaned virtual machines have HA restart disabled.
- B. The Orphaned virtual machines moved recently and the change did not persist.
- C. The host is attached to failed storage.
- D. The host just came out of maintenance mode.

**Correct Answer:** A

**Section:** (none)

**Explanation**

**Explanation/Reference:**

Explanation:

If the host is rebooted within an hour after the virtual machines are moved or powered on, the vmInventory.xml file does not persist and hostd does not report these virtual machines as registered on the host. In an HA-enabled cluster, this condition impacts only the virtual machines with HA restart disabled.

Reference: [https://kb.vmware.com/selfservice/microsites/search.do?language=en\\_US&cmd=displayKC&externalId=1003742#reboothostonehour](https://kb.vmware.com/selfservice/microsites/search.do?language=en_US&cmd=displayKC&externalId=1003742#reboothostonehour)

#### QUESTION 81

An administrator is attempting to power on a virtual machine, but is unable to do so.

Which two reasons are probable causes of the failure? (Choose two.)

- A. Storage access to the virtual machine swap file has been lost.
- B. One of the virtual machine VMDK files is locked.
- C. Virtual machine is running CentOS 7.0 64-bit.
- D. Virtual machine has Hyper-Threading enabled.

**Correct Answer:** AB

**Section:** (none)

**Explanation**

**Explanation/Reference:**

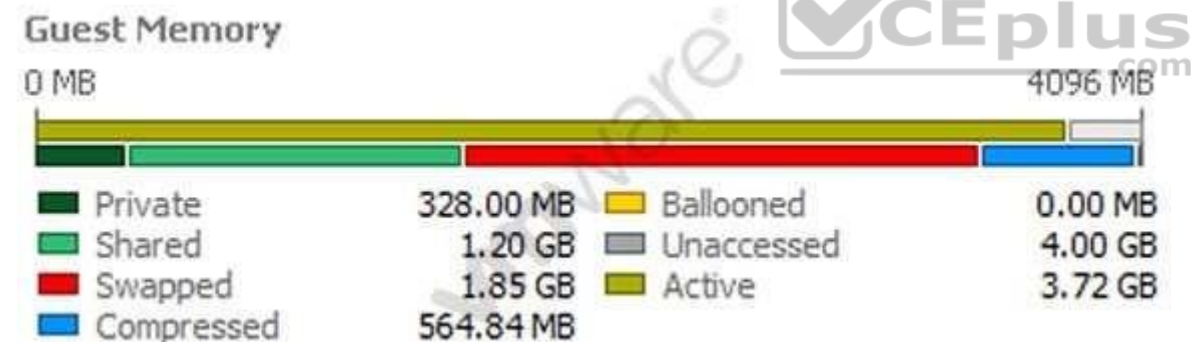
Explanation:

One of the reasons it is doing so is because the storage access to the VM machine swap file has been lost or one of the VMDK files is locked.

Reference: [https://kb.vmware.com/selfservice/microsites/search.do?language=en\\_US&cmd=displayKC&externalId=10051](https://kb.vmware.com/selfservice/microsites/search.do?language=en_US&cmd=displayKC&externalId=10051)

## QUESTION 82

Refer to the Exhibit.



A 4 GB Memory virtual machine is experiencing extended memory issues, as shown in the Exhibit.

What potential issues could be attributed to this memory pressure?

- A. A limit is imposed on the virtual memory of this virtual machine.
- B. The Balloon driver has been uninstalled.
- C. A limit has been imposed on the Virtual CPU of the virtual machine.



D. Storage IO control has been enabled for the virtual machine causing the swapped memory.

**Correct Answer:** AB

**Section:** (none)

**Explanation**

**Explanation/Reference:**

Explanation:

One of the issue might be that the limit is imposed on the virtual memory of this VM. Secondly, the balloon driver has been uninstalled. That's why it is experiencing memory issues. Reference:

### QUESTION 83

An administrator has unsuccessfully attempted several times to install an Operating System inside a virtual machine. The administrator finds that the installation fails at random intervals.

Which two actions can be taken to resolve this issue? (Choose two.)

- A. Verify the md5sum and if invalid, download the installation files again.
- B. Attempt the installation an additional time.
- C. Attempt to use a different installation media or installation method.
- D. Create a new virtual machine and attempt the installation with the existing media.

**Correct Answer:** AC

**Section:** (none)

**Explanation**

**Explanation/Reference:**

Explanation:

First verify md5sum and if it is invalid, download installation files again. Secondly, attempt to use a different installation media because the one used might be corrupt.

Reference:

### QUESTION 84

A Fault Tolerance (FT) virtual machine with four vCPUs is experiencing high latency when performing ICMP and Application tests.

What are three potential causes that may be attributing to this latency? (Choose three.)

- A. The FT network has insufficient bandwidth and is running on a 1GB Link.
- B. The FT network is on a particularly high latency link.

- C. The FT network has been configured with Network I/O Control.
- D. The FT virtual machine is running an e1000 network adapter.
- E. The FT virtual machine is running on poor performing network-based storage.

**Correct Answer:** ABC

**Section:** (none)

**Explanation**

**Explanation/Reference:**

Explanation:

The latency can be caused by FT network having insufficient bandwidth and is running on a 1 GB link or the network is on a particularly high latency risk. The other reason might be that the FT network has been configured with network I/O control. Reference:

#### **QUESTION 85**

VMware tools is failing to install on a Microsoft Windows virtual machine.

What are two possible situations that would prevent the installation? (Choose two.)



<https://vceplus.com/>

- A. The VMware tools installation media is corrupt.
- B. The incorrect Operating System was selected in the virtual machine options.
- C. The software prerequisites have not been installed.
- D. The prerequisite services have not been started.

**Correct Answer:** AB

**Section:** (none)

**Explanation**

**Explanation/Reference:**

Explanation:

Among the probable causes, one might be that the VMware tools installation media is corrupt or the incorrect OS was selected in the virtual machine options.

Reference: [https://kb.vmware.com/selfservice/microsites/search.do?language=en\\_US&cmd=displayKC&externalId=1012693](https://kb.vmware.com/selfservice/microsites/search.do?language=en_US&cmd=displayKC&externalId=1012693)

#### QUESTION 86

An administrator is attempting to power on a virtual machine, but the task is hanging at 95%.

What three scenarios best explain why this problem is happening? (Choose three.)

- A. A virtual machine question is currently being posed to the administrator.
- B. Another task for the virtual machine or other component is already in progress.
- C. The VMware High Availability cluster has insufficient resources to guarantee failover.
- D. The host has lost access to the storage device containing the virtual machine files. E. The host is under resource contention and unable to power on the virtual machine.

**Correct Answer:** ABC

**Section:** (none)

**Explanation**

**Explanation/Reference:**

Explanation:

It might be that another task for the virtual machine or another component is already in progress or that the VMware HA cluster has insufficient resources to guarantee failover.

Reference: [https://kb.vmware.com/selfservice/search.do?cmd=displayKC&docType=kc&docTypeID=DT\\_KB\\_1\\_1&externalId=1027096](https://kb.vmware.com/selfservice/search.do?cmd=displayKC&docType=kc&docTypeID=DT_KB_1_1&externalId=1027096)

#### QUESTION 87

An application running in a virtual machine is experiencing performance issues. When utilizing performance monitoring utilities, it is noted that the CPU Utilization of the application is at 100%.

Which two scenarios are probable causes of the CPU contention for the application? (Choose two.)

- A. There is a network I/O constraint.
- B. There is a storage I/O constraint.
- C. There is insufficient disk space assigned to the virtual machine.
- D. The application is not virtualization aware.

**Correct Answer:** AB

**Section: (none)**

**Explanation**

**Explanation/Reference:**

Explanation:

There are two possible causes. One is a network I/O constraint and the other is storage I/O constraint.

Reference: [https://kb.vmware.com/selfservice/microsites/search.do?language=en\\_US&cmd=displayKC&externalId=2001003](https://kb.vmware.com/selfservice/microsites/search.do?language=en_US&cmd=displayKC&externalId=2001003)

### **QUESTION 88**

A user is trying to retrieve objects from a SharePoint server and finds the request is taking an excessive amount of time. An administrator tries to isolate the issue and notes the following:

- Application performance is poor when compared to virtual machines on other hosts.
- Performance improves when the virtual machine is moved to another host.
- The virtual machine encounters higher than expected CPU %Ready times.

What conclusion can be reached regarding the performance issues for this virtual machine?

- A. Host Power Management is directly impacting virtual machine performance.
- B. The virtual machine has a large number of snapshots.
- C. The Path Selection Policy for the storage device is set differently on the affected host.
- D. Network I/O control is configured for the portgroup.

**Correct Answer: A**

**Section: (none)**

**Explanation**

**Explanation/Reference:**

Explanation:

Processor Power Management (Power Saving, Power Scaling) is impacting application performance on virtual machines.

Reference: [https://kb.vmware.com/selfservice/microsites/search.do?language=en\\_US&cmd=displayKC&externalId=1018206](https://kb.vmware.com/selfservice/microsites/search.do?language=en_US&cmd=displayKC&externalId=1018206)

### **QUESTION 89**

When attempting to access a virtual machine, an administrator is unable to login using the vSphere credentials.

What two options are probable causes of the authentication failure? (Choose two.)

- A. The vSphere credentials have not been granted permissions.
- B. The vSphere credentials are granted read-only permissions.

- C. The vSphere credentials are granted no-access permissions.
- D. The vSphere credentials are not a member of the local administrator group.

**Correct Answer:** AB

**Section:** (none)

**Explanation**

**Explanation/Reference:**

Explanation:

While the details of authentication and authorization differ between ESX/ESXi and vCenter Server, the model itself is the same for both system. It relies on privileges, roles, and permissions.

Reference: [https://pubs.vmware.com/vsphere-50/index.jsp?topic=%2Fcom.vmware.wssdk.pg.doc\\_50%2FPG\\_Ch6\\_Authenticate\\_Authorize.8.3.html](https://pubs.vmware.com/vsphere-50/index.jsp?topic=%2Fcom.vmware.wssdk.pg.doc_50%2FPG_Ch6_Authenticate_Authorize.8.3.html)

### QUESTION 90

A physical Windows 2008 R2 Server is converted to a virtual machine using VMware vCenter Converter. Upon completion of the conversion and subsequent power on operation, the virtual machine fails to boot and the message below is observed in the Console of the virtual machine:

STOP 0x0000007B INACCESSIBLE\_BOOT\_DEVICE

Which two potential issues may be causing this boot failure? (Choose two.)

- A. An incorrect SCSI controller was selected during conversion.
- B. Incompatible software drivers were migrated into the virtual machine from the source machine.
- C. The vmdk file backing the virtual machine was thick provisioned.
- D. A snapshot was taken immediately after the conversion completed.

**Correct Answer:** AB

**Section:** (none)

**Explanation**

**Explanation/Reference:**

Explanation:

It might be the incorrect SCSI controller was selected during conversion or the incompatible software drivers were migrated into the VM from source machine.

Reference: [https://kb.vmware.com/selfservice/microsites/search.do?language=en\\_US&cmd=displayKC&externalId=1016330](https://kb.vmware.com/selfservice/microsites/search.do?language=en_US&cmd=displayKC&externalId=1016330)

### QUESTION 91

When attempting to power on a Virtual Machine you observe the following error:

Cannot open the disk '/vmfs/volumes/volume/vm/vm-000002.vmdk' or one of the snapshot disks it depends on.

Which three actions will be the best solutions to address this problem? (Choose three.)

- A. Verify that the virtual machine's disk files are present.
- B. Investigate the host and virtual machine log files.
- C. Verify the vmdk descriptor files and if required, recreate them.
- D. Delete the disk file preventing the power on operation.
- E. Migrate or register the virtual machine to a different host.

**Correct Answer:** ABC

**Section:** (none)

**Explanation**

**Explanation/Reference:**

Explanation:

First verify that the VM disk files are present. Check host and VM log files. Verify vmdk descriptor files and recreate them if required.

Reference: [https://kb.vmware.com/selfservice/microsites/search.do?language=en\\_US&cmd=displayKC&externalId=1004232](https://kb.vmware.com/selfservice/microsites/search.do?language=en_US&cmd=displayKC&externalId=1004232)

#### QUESTION 92

An administrator is using the Host Failures to Tolerate Admission Control Policy for a vSphere High Availability (HA) cluster. When configuring this setting on the cluster, the administrator sees this error message:

Insufficient resources to satisfy HA failover level on cluster

What are two likely causes for the error? (Choose two.)

- A. The hosts in the cluster are disconnected.
- B. A host in the cluster is displaying an HA error.
- C. Distributed Resource Scheduler has not been configured on the cluster.
- D. Virtual Machine Component Protection has not been turned on.

**Correct Answer:** AB

**Section:** (none)

**Explanation**

**Explanation/Reference:**

Explanation:

One of the causes is that the hosts in the cluster are disconnected. They might be displaying an HA error.

Reference: [https://kb.vmware.com/selfservice/microsites/search.do?language=en\\_US&cmd=displayKC&externalId=1001596](https://kb.vmware.com/selfservice/microsites/search.do?language=en_US&cmd=displayKC&externalId=1001596)

### QUESTION 93

An administrator has been tasked with enabling High Availability (HA) on a cluster in a vSphere 6.x environment with default settings. The cluster configures properly and there are no errors. The next day when powering on a virtual machine, an error is presented:

Not Enough Failover Resources

Which three scenarios are likely causes of this error message? (Choose three.)

- A. The default VM Monitoring Sensitivity is set too high.
- B. There are not enough datastore heartbeat datastores configured by default.
- C. The default slot size in the cluster is set too high.
- D. There are virtual machines with large CPU reservations.
- E. A host is in maintenance mode for a replacement of a failed Hard Drive.

**Correct Answer:** CDE

**Section:** (none)

**Explanation**



**Explanation/Reference:**

Explanation:

This error message happens when the default slot size in the cluster is too high or the virtual machines with large CPU reservations are used. It also happens when the host is in maintenance mode for the replace of a failed hard drive.

Reference: [https://pubs.vmware.com/vsphere-4-esx-vcenter/index.jsp?topic=/com.vmware.vsphere.availability.doc\\_41/c\\_useha\\_works.html](https://pubs.vmware.com/vsphere-4-esx-vcenter/index.jsp?topic=/com.vmware.vsphere.availability.doc_41/c_useha_works.html)

### QUESTION 94

An administrator is attempting to remove an ESXi 6.x host from a vSphere Distributed Switch (vDS). When the administrator attempts to remove the host, the following error is observed:

The resource '16' is still in use.

What three steps are needed to successfully remove the host from the switch? (Choose three.)

- A. Select Manage Ports on the vDS for the host.
- B. Locate all ports currently in use on the vDS for the host.

- C. Migrate or delete any vmkernel or virtual machine adapters associated with the switch.
- D. Remove all network cards from the switch before trying to remove the host.
- E. Create a standard switch for everything to be automatically be migrated to.

**Correct Answer:** ABC

**Section:** (none)

**Explanation**

**Explanation/Reference:**

Explanation:

To remove the host from the switch select manage ports on the vDS along with locating all ports currently in use. Migrate or delete any vmkernel or virtual machine adapters.

Reference: <https://pubs.vmware.com/vsphere-55/index.jsp?topic=%2Fcom.vmware.vsphere.troubleshooting.doc%2FGUID-038AC93F-D710-48ED-8E3B258A23FB2930.html>

#### QUESTION 95

An administrator logs into the vSphere Web Client, but is unable to see any hosts and clusters.

Which two options could fix the problem? (Choose two.)

- A. Verify that the client web browser and vCenter Server are in the same broadcast domain.
- B. Verify that the vCenter Server system is registered with the same Platform Services Controller as the vSphere Web Client.
- C. Log in to the vCenter Server as a user within the Active Directory domain.
- D. Log in to the vSphere Web Client as a user with permissions on the vCenter Server system.

**Correct Answer:** BD

**Section:** (none)

**Explanation**

**Explanation/Reference:**

Explanation:

Log in to the vSphere Web Client as a user with permissions on the vCenter Server system. Verify that the vCenter Server system is registered with the same Platform Services Controller as the vSphere Web Client.

Reference: [https://kb.vmware.com/selfservice/microsites/search.do?language=en\\_US&cmd=displayKC&externalId=2113917](https://kb.vmware.com/selfservice/microsites/search.do?language=en_US&cmd=displayKC&externalId=2113917)

#### QUESTION 96

Users of an application are reporting performance issues. The following performance values are observed in the vSphere Web Client:

- Host CPU utilization is 90%



- Virtual Machine memory utilization is consistently greater than 90% ▪
- CPU Ready values are higher than 20%

What could be the cause of the application performance issue?

- A. The host is lacking the CPU resources required to meet the demand.
- B. The host is lacking the memory resources required to meet the demand.
- C. The virtual machine is lacking the CPU resources required to meet the demand.
- D. The virtual machine is lacking the memory resources required to meet the demand.

**Correct Answer:** A

**Section:** (none)

**Explanation**

**Explanation/Reference:**

Explanation:

A short spike in CPU usage indicates that you are making the best use of the host resources. However, if the value is constantly high, the host is probably lacking the CPU required to meet the demand. Reference:

#### QUESTION 97

An administrator reports that the System Event log data is only available for 24 hours when reviewing the Hardware Status tab.

Which condition could be responsible for the loss of data?

- A. A Reset event log was executed.
- B. The statistical collection level was set to a value of 1.
- C. The boot disk of the host is corrupt.
- D. Syslog has been configured at the vCenter Server level.

**Correct Answer:** A

**Section:** (none)

**Explanation**

**Explanation/Reference:**

Explanation:

It clearly shows that the reset event log was executed that's why data is available for 24 hours only.

Reference: [https://kb.vmware.com/selfservice/microsites/search.do?language=en\\_US&cmd=displayKC&externalId=2061093](https://kb.vmware.com/selfservice/microsites/search.do?language=en_US&cmd=displayKC&externalId=2061093)

#### QUESTION 98

An administrator receives a report that no real time statistics are available for a virtual machine in the vCenter Server inventory.

Which two statements indicate likely causes of the problem? (Choose two.)

- A. The virtual machine is powered off.
- B. The host containing the virtual machine is disconnected from vCenter Server.
- C. There is insufficient real time data to display the information.
- D. The vCenter Server service is not running.

**Correct Answer:** AB

**Section:** (none)

**Explanation**

**Explanation/Reference:**

Explanation:

The most likely cause might be that the virtual machine is powered off or the host containing the VM is disconnected from the vCenter server.

Reference: [https://kb.vmware.com/selfservice/microsites/search.do?language=en\\_US&cmd=displayKC&externalId=1003979](https://kb.vmware.com/selfservice/microsites/search.do?language=en_US&cmd=displayKC&externalId=1003979)

#### QUESTION 99

A virtual machine is experiencing performance issues. The following performance metrics are observed:

- CPU usage value for the virtual machine is above 90%
- CPU ready value for the virtual machine is above 20%

Which two activities will likely resolve the performance issues? (Choose two.)

- A. Set a CPU reservation for the virtual machine.
- B. Increase the CPU limit on the virtual machine.
- C. Decrease CPU shares equally for all virtual machines on the host.
- D. Increase CPU shares equally for all virtual machines on the host.

**Correct Answer:** AB

**Section:** (none)

**Explanation**

**Explanation/Reference:**

Explanation:

Set a CPU reservation for the virtual machine and increase the CPU limit on the virtual machine.

Reference:

**QUESTION 100**

An administrator wants to add a web server to an existing multi-tier application consisting of three virtual machines:

- A web server
- A database server
- An application server

The web server should be added to the application when the primary web server reaches:

- 70% vCPU utilization
- 55% active memory

Which option will achieve this result?

- A. Create a virtual machine alarm with an action to run a script that starts a new instance of the web server.
- B. Create a host cpu and memory alarm with an action to run a script that starts a new instance of the webserver.
- C. Configure High Availability application monitoring for the web server and set it to trigger deployment of a new instance of the web server.
- D. Configure Fault Tolerance on the virtual machine and leave the secondary machine disabled until needed.

**Correct Answer:** A

**Section:** (none)

**Explanation**



**Explanation/Reference:**

Explanation:

You have to create a new VM alarm with an action to run a script that starts with a new instance of the web server.

Reference:

**QUESTION 101**

A vCenter Operations Manager 5.7 environment is upgraded to vRealize Operations. After the upgrade, the analytics services fail to start.

Which three steps must be taken to resolve the problem? (Choose three.)

- A. Take the vRealize Operations cluster offline.
- B. Delete the activity persistence files.
- C. Bring the cluster back online.
- D. Remove any unresponsive nodes.
- E. Stop the CaSA service.

**Correct Answer:** ABC

**Section: (none)**

**Explanation**

**Explanation/Reference:**

Explanation:

If the analytics failed to start, take the vRealize operations cluster offline, delete activity persistence files and bring the cluster back online to start the failed services. Reference: <https://www.vmware.com/support/vrops/doc/vrops-601-release-notes.html>

**QUESTION 102**

Which two badges are major badges in vRealize Operations? (Choose two.)

- A. Risk
- B. Efficiency
- C. Workload
- D. Faults

**Correct Answer: AB**

**Section: (none)**

**Explanation**

**Explanation/Reference:**

Explanation: vC Ops has 3 major badges and their status depends on the minor badges whose scores get rolled up to make up the major badges. Those 3 major badges are Health, Risk, and Efficiency. Each of these 3 badges are weighted combinations of minor badges. Thus, the major badges are the color and numerical score that they are because of the status of the minor badges that they are summarizing.

Reference: <http://blogs.vmware.com/management/2014/04/david-davis-on-vcenter-operations-post-8-understanding-vcenter-operations-badges.html>

**QUESTION 103**

A user wants to monitor a business-critical virtual machine to ensure that it doesn't run out of resources.

What metric could be monitored in vRealize Operations to address this concern?

- A. Time Remaining badge
- B. Compliance badge
- C. Reclaimable Waste badge
- D. Density badge

**Correct Answer: A**

**Section: (none)**

**Explanation**

**Explanation/Reference:**

Explanation:

You need to monitor time remaining badge to ensure virtual machine doesn't run out of resources.

Reference: <http://blogs.vmware.com/tam/files/2015/02/vRealize-Operations-5.8-Guide1.pdf>

**QUESTION 104**

After selecting an object in vRealize Operations, how can a user compare the badge values of related child objects?

- A. Use the Scoreboard tab
- B. Use the Relationship tab
- C. Use the Members tab
- D. Use the Overview tab

**Correct Answer: A**

**Section: (none)**

**Explanation**

**Explanation/Reference:**

Explanation:

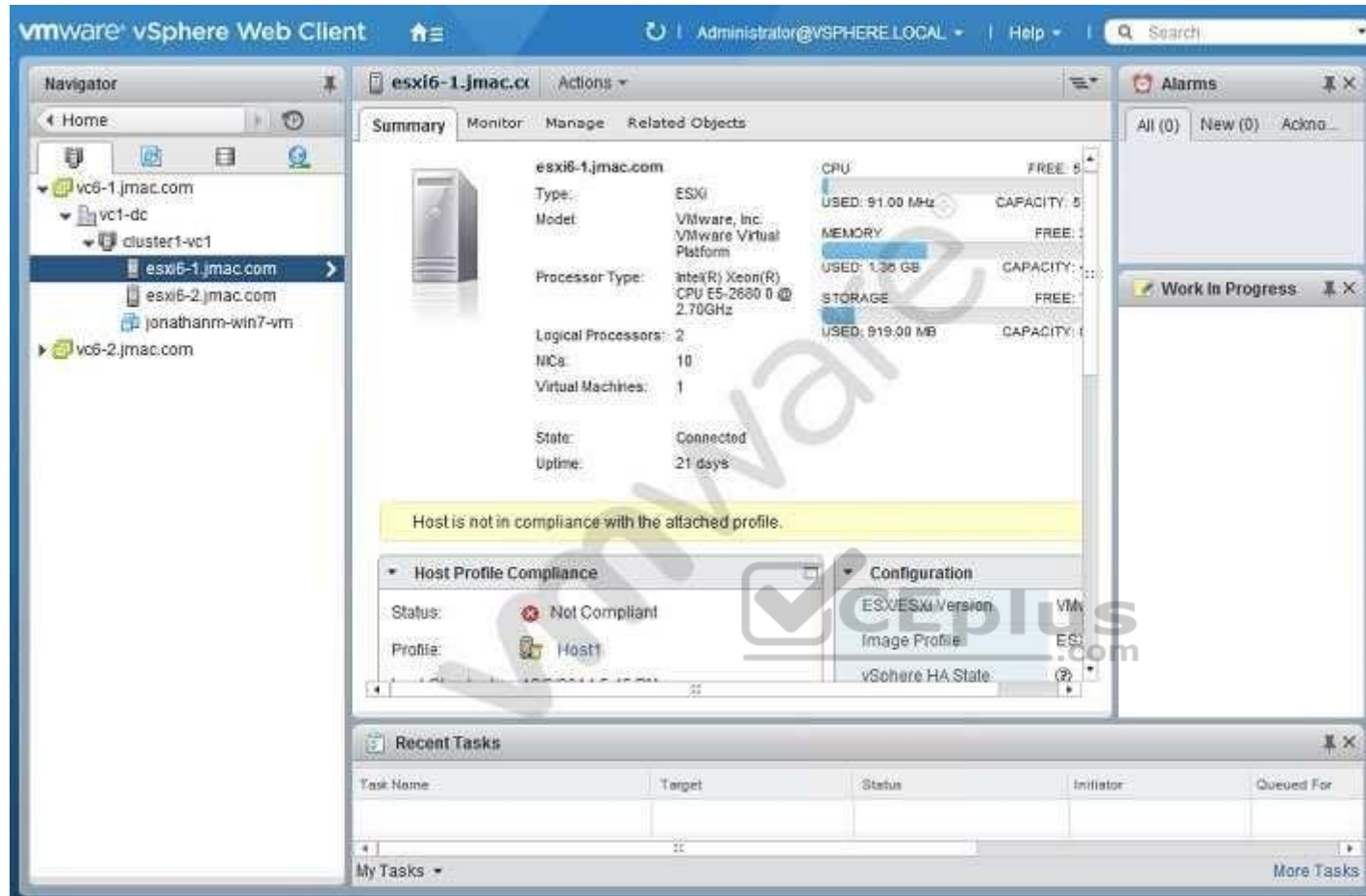
Use scoreboard tab to compare the badge values of related child objects.

Reference: <http://blogs.vmware.com/management/2014/08/david-davis-vcenter-operations-post-14-capacity-analysis-virtual-machines.html>

**QUESTION 105**

Refer to the Exhibit.





An administrator logs into the vSphere Web Client and sees the warning shown in the Exhibit.

During a change control window, the warning was addressed.

What should be done to verify that the host is no longer showing the warning?

- Run a Remediate host operation.
- Recheck the compliance of the host.
- Restart the host to get rid of the warning.

D. Install VMware tools to clear the warning.

**Correct Answer:** B

**Section:** (none)

**Explanation**

**Explanation/Reference:**

Explanation:

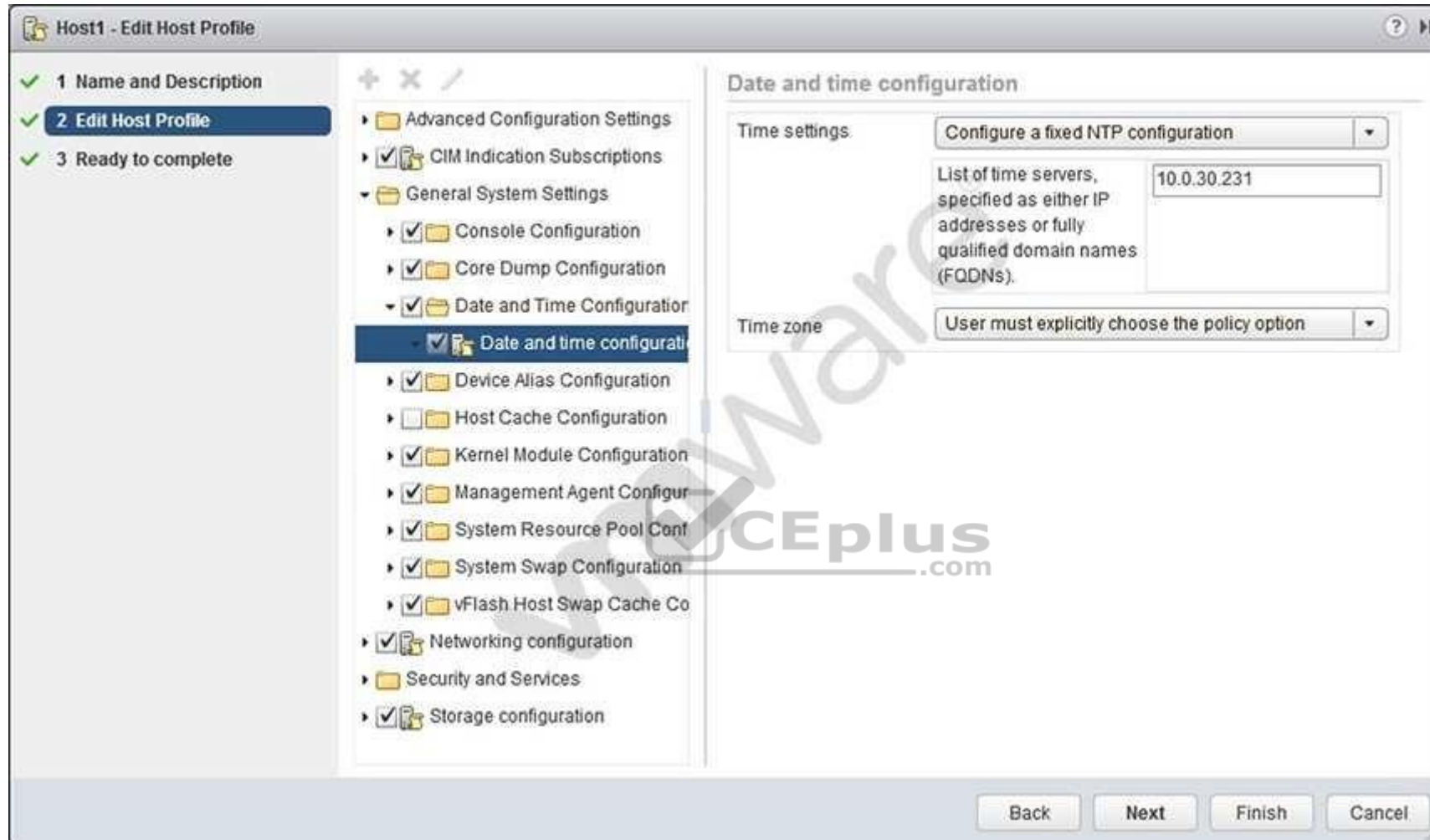
To make sure the host is no longer showing the warning, recheck the compliance of the host.

Reference:

**QUESTION 106**

Refer to the Exhibit.





An administrator has configured a host profile so that ESXi 6.x hosts will point to the corporate NTP server for time synchronization. The NTP server is located at 10.0.30.213, but time has not been synchronized properly across the ESXi hosts.

The administrator reviews Host Profile settings as shown in the Exhibit.

Which two steps are required to resolve the issue? (Choose two.)



- A. Correct the NTP server IP address.
- B. Check the host for host profile compliance.
- C. Remediate the host based on the updated host profile.
- D. Change the NTP server to the FQDN as IP Addresses are not supported.

**Correct Answer:** AC

**Section:** (none)

**Explanation**

**Explanation/Reference:**

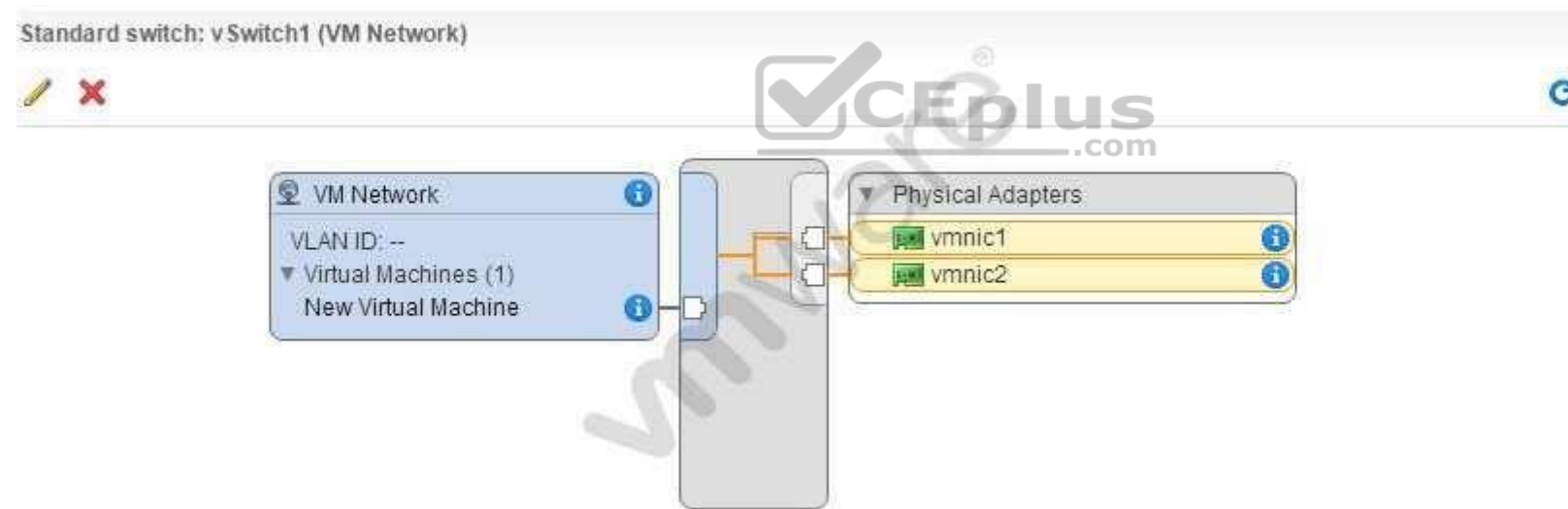
Explanation:

To resolve the issue, correct the NTP server IP address (it doesn't look right), and remediate the host based on the updated host profile.

Reference:

#### QUESTION 107

Refer to the Exhibit.



An administrator is viewing network connectivity for a new virtual machine, as shown in the Exhibit.

Based on the Exhibit, what will occur with the network traffic of this virtual machine when communicating externally from **vSwitch1**?

- A. The virtual machine will communicate on both uplinks
- B. The virtual machine will only communicate on vmnic1
- C. The virtual machine will only communicate on vmnic2
- D. The virtual machine will fail to communicate externally

**Correct Answer:** D

**Section:** (none)

**Explanation**

**Explanation/Reference:**

Explanation:

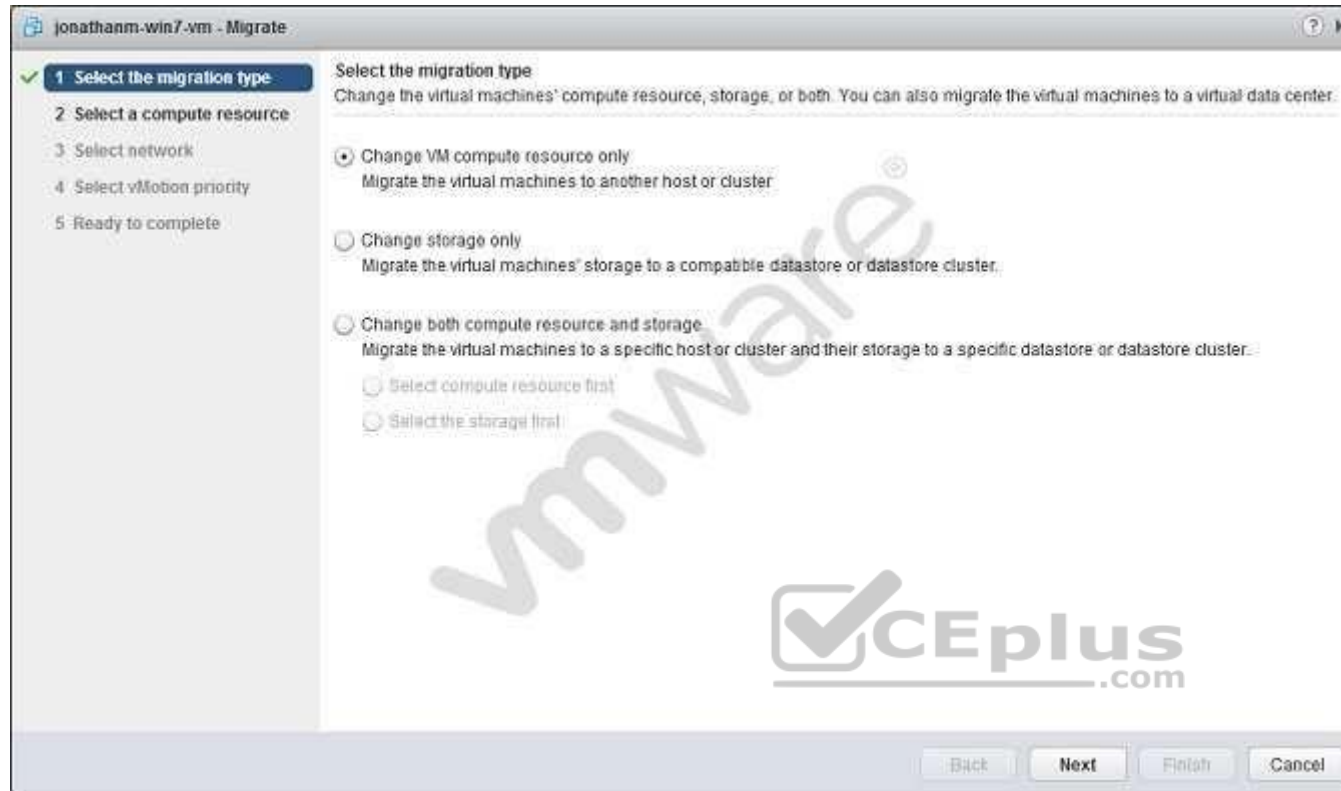
The virtual machine will fail to communicate externally because it seems that the connection to the physical adapters is not right.

Reference:

**QUESTION 108**

Refer to the Exhibit.





An administrator is migrating a powered-on virtual machine, as shown in the exhibit.

Which option should be selected to perform a Storage vMotion of the VM?

- A. Change storage only
- B. Change VM compute resource only
- C. Change both compute resource and storage, changing the compute resource first.
- D. Change both compute resource and storage, changing the storage resource first.

**Correct Answer:** A

**Section:** (none)

**Explanation**

### Explanation/Reference:

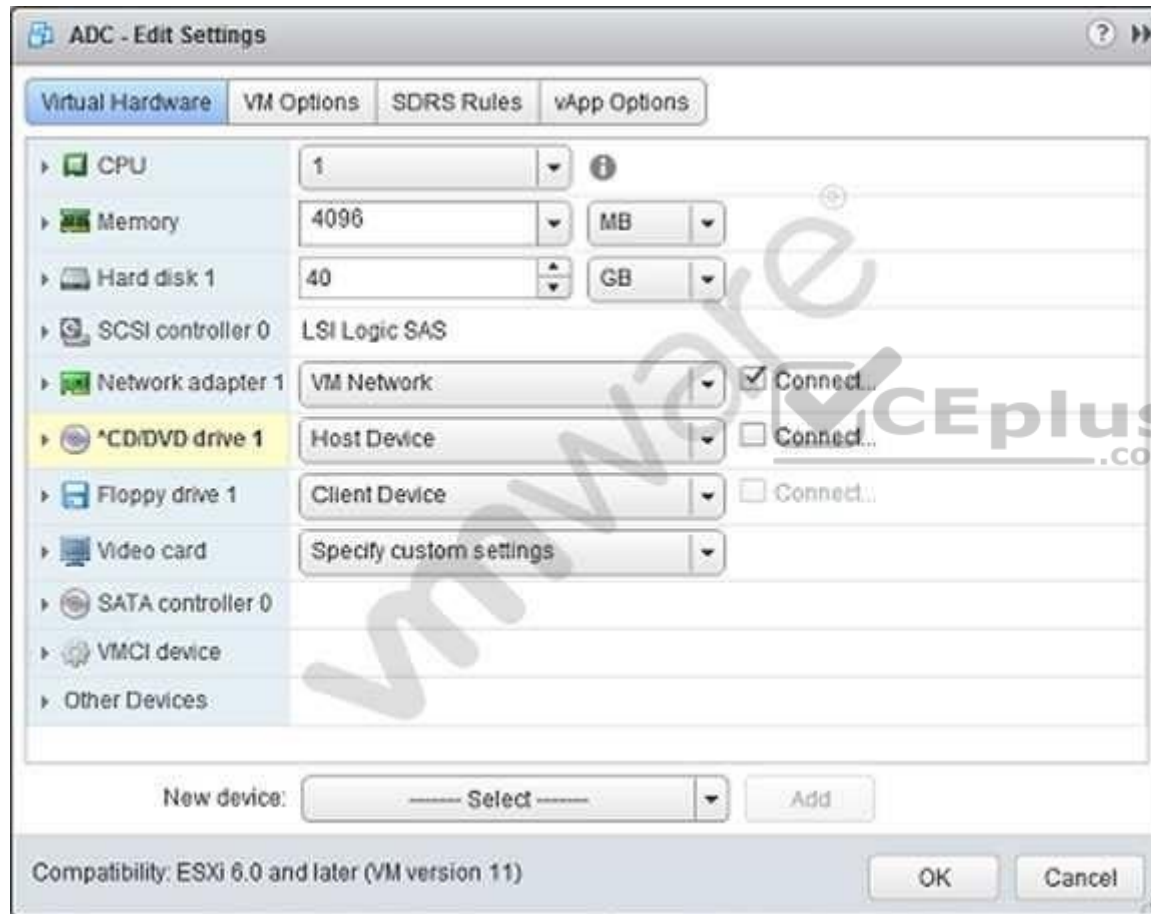
Explanation:

Select Change storage only because this option will migrate the virtual machine's storage to a compatible datastore or a datastore cluster.

Reference:

### QUESTION 109

Refer to the Exhibit.



An administrator is installing Windows into a virtual machine. The DVD has been mounted on the Host and configured for the virtual machine as shown in the Exhibit.

Based on the exhibit, when the virtual machine is booted, why would it attempt to search for a PXE server?

- A. The CD/DVD device is not connected.
- B. The ISO is in the incorrect storage location.
- C. The OS minimum requirements have not been met.
- D. The CD/DVD device is not set to Client Device.

**Correct Answer:** A

**Section:** (none)

**Explanation**

**Explanation/Reference:**

Explanation:

It looks like the CD/DVD device is not connected. Restart the machine and recheck again. When the system doesn't find CD/DVD drive, it looks for PXE server to boot. Reference:

#### QUESTION 110

Refer to the Exhibit.



An administrator is analyzing a virtual machine as shown in the Exhibit.

What is the current long term risk for this virtual machine?

- A. The virtual machine may run out of memory before April 27.
- B. The virtual machine may continue to function after April 27.

- C. The virtual machine has adequate memory configured for operation for the next 120 days.
- D. The virtual machine has adequate memory reservation configured for operation for the next 120 days.

**Correct Answer:** A

**Section:** (none)

**Explanation**

**Explanation/Reference:**

Explanation:

It seems like this virtual machine will run out of memory before April 27 as the graph dips down in the beginning of the image in exhibit.

Reference:

