

2V0-602.exam.205q

Number: 2V0-602
Passing Score: 800
Time Limit: 120 min



Website: <https://vceplus.com>
VCE to PDF Converter: <https://vceplus.com/vce-to-pdf/>
Facebook: <https://www.facebook.com/VCE.For.All.VN/>
Twitter : https://twitter.com/VCE_Plus

<https://vceplus.com/>

2V0-602

VMware vSphere 6.5 Foundations

Exam A

QUESTION 1

Which is the VDP appliance available storage configuration maximum?



<https://vceplus.com/>

- A. 2 TB
- B. 62 TB
- C. 8 TB
- D. 4 TB

Correct Answer: C

Section: (none)

Explanation



Explanation/Reference:

Reference: <https://blogs.vmware.com/vsphere/2012/08/setting-the-record-straight-on-vmware-vsphere-data-protection.html>

QUESTION 2

A vSphere Administrator has been tasked with ensuring that 500 virtual desktops are unable to communicate with one another, but can communicate with required services.

Which two solutions does VMware recommend? (Choose two.)

- A. VMware NSX Distributed Firewall
- B. Private VLAN
- C. vSphere Host Firewall
- D. Port Filtering

Correct Answer: AB

Section: (none)

Explanation

Explanation/Reference:

QUESTION 3

What is the maximum supported number of Virtual SCSI adapters per VM in vSphere 6.5?

- A. 8
- B. 4
- C. 2
- D. 6

Correct Answer: B

Section: (none)

Explanation

Explanation/Reference:

Reference: <https://www.vmware.com/pdf/vsphere6/r65/vsphere-65-configuration-maximums.pdf> (page 9)

QUESTION 4

A VMware vSphere 6.x Administrator is tasked with expanding a current vRealize Log Insight Deployment.

What two steps will accomplish this task? (Choose two.)

- A. Run the startup wizard and select Join Existing Deployment.
- B. Login to the vRealize Log Insight Management UI and select Add New Node.
- C. Deploy another vRealize Log Insight server from the OVF.
- D. Deploy and install vRealize Log Insight on a new Linux virtual machine.

Correct Answer: AB

Section: (none)

Explanation

Explanation/Reference:

QUESTION 5

Which two resource types can be limited on the vApp level? (Choose two.)

- A. CPU
- B. Storage
- C. Memory

D. Network

Correct Answer: AC

Section: (none)

Explanation

Explanation/Reference:

Reference https://docs.vmware.com/en/VMware-vSphere/5.5/com.vmware.vsphere.vm_admin.doc/GUID-9902FD4C-4727-43F7-AEAF-901DA4CB4D60.html

QUESTION 6

Which file format supports the exchange of virtual appliances across products and platforms?

- A. FAT32
- B. OVF
- C. VMDK
- D. NTFS

Correct Answer: B

Section: (none)

Explanation

Explanation/Reference:

Reference: https://pubs.vmware.com/vsphere-65/index.jsp?topic=%2Fcom.vmware.vsphere.vm_admin.doc%2FGUID-AE61948B-C2EE-436E-BAFB3C7209088552.html

QUESTION 7

Which two databases are supported for the vCenter Server Appliance 6.x? (Choose two.)

- A. PostgreSQL
- B. Oracle
- C. DB2
- D. Microsoft SQL Server

Correct Answer: AB

Section: (none)

Explanation



Explanation/Reference:

Reference: <https://pubs.vmware.com/vsphere-60/index.jsp?topic=%2Fcom.vmware.vsphere.upgrade.doc%2FGUID-8E23C952-56B1-43CB-A1D3F3259FD73FA4.html>

QUESTION 8

Which three functions are provided by Storage DRS? (Choose three.)

- A. space load balancing among datastores within a datastore cluster
- B. VM disk sizing recommendations for virtual machines in datastores within a datastore cluster
- C. I/O load balancing among datastores within a datastore cluster
- D. snapshot consolidation recommendations among datastores within a datastore cluster
- E. initial placement recommendations for virtual disks based on space and I/O workload

Correct Answer: ACE

Section: (none)

Explanation

Explanation/Reference:

Reference: <https://pubs.vmware.com/vsphere-51/index.jsp?topic=%2Fcom.vmware.vsphere.resmgmt.doc%2FGUID-19B6F05F-D285-4ACB-9B1324A1DE9B4058.html>

QUESTION 9

A vSphere Administrator has been tasked with configuring Jumbo Frames and the current environment is based on vSphere Standard Switch. Which three steps are required?

- A. Verify the physical switches in the environment have been properly configured.
- B. Configure the Switch MTU.
- C. Configure the Port Group MTU.
- D. Migrate to a Distributed vSwitch.
- E. Configure the Distributed vSwitch MTU.

Correct Answer: ABC

Section: (none)

Explanation

Explanation/Reference:

Reference: <https://pubs.vmware.com/vsphere-55/index.jsp?topic=%2Fcom.vmware.vsphere.networking.doc%2FGUID-E5DDE8D4-A6DA-4F7E-A1E8F611E98731FC.html>

QUESTION 10

What is required to create a vSphere Distributed Switch? (Choose two.)



<https://vceplus.com/>

- A. A minimum of two physical uplinks is required.
- B. vSphere Enterprise Plus licensing is required.
- C. The host is added to a vCenter Server.
- D. Login to the ESXi Host with the Root account.

Correct Answer: AC

Section: (none)

Explanation

Explanation/Reference:

**QUESTION 11**

What three steps are necessary to configure Virtual Volumes (vVOLs) on an ESXi hosts? (Choose three.)

- A. Create and manage Protocol Endpoints.
- B. Create a virtual datastore.
- C. Create a LUN.
- D. Register Storage Providers.
- E. Format the volume with VMFS6.

Correct Answer: ABD

Section: (none)

Explanation

Explanation/Reference:

Reference: https://kb.vmware.com/selfservice/microsites/search.do?language=en_US&cmd=displayKC&externalId=2113013

QUESTION 12

A VMware vSphere 6.x Administrator is creating an Alarm Action.

What are three configurable actions? (Choose three.)

- A. Shutdown Guest
- B. Restart Guest
- C. Send a notification email
- D. Migrate VM
- E. Run a command

Correct Answer: CDE

Section: (none)

Explanation

Explanation/Reference:

Reference: https://pubs.vmware.com/vsphere-4-esx-vcenter/index.jsp#com.vmware.vsphere.dcadm.doc_41/vsp_dc_admin_guide/working_with_alarms/r_default_alarm_actions.html

QUESTION 13

What two new features are introduced with virtual machine compatibility version 13? (Choose two.)

- A. IDE hot plug support
- B. VMXNET 4
- C. Virtual Memory maximum 6128 GB
- D. Virtual NVMe

Correct Answer: CD

Section: (none)

Explanation

Explanation/Reference:

Reference: https://pubs.vmware.com/vsphere-65/index.jsp?topic=%2Fcom.vmware.vsphere.vm_admin.doc%2FGUID-789C3913-1053-4850-A0F0E29C3D32B6DA.html

QUESTION 14

Which three factors should an Administrator take into account when determining the required VDP appliance size and number of appliances? (Choose three.)

- A. retention periods (daily, weekly, monthly, yearly)
- B. VMs guest OS family and version
- C. typical change rate
- D. Number and type (database, file system) of VMs

Correct Answer: ACD

Section: (none)

Explanation

Explanation/Reference:

Reference: <https://pubs.vmware.com/vsphere-60/topic/com.vmware.ICbase/PDF/vmware-data-protection-administration-guide-60.pdf>

QUESTION 15

Which two statements are correct when licensing an ESXi 6.x host? (Choose two.)

- A. ESXi licenses can be assigned utilizing the ESXi host client.
- B. Bulk licensing requires vSphere PowerCLI.
- C. Bulk licensing requires vSphere Auto Deploy to be enabled.
- D. ESXi licenses can only be applied to ESXi hosts connected to a vCenter Server.

Correct Answer: AB

Section: (none)

Explanation

Explanation/Reference:

QUESTION 16

Which three IP addresses may be pinged by the Test Management Network feature in the ESXi hosts DCUI? (Choose three.)

- A. NTP server
- B. Secondary DNS server
- C. DHCP server
- D. Default gateway
- E. Primary DNS server

Correct Answer: BDE

Section: (none)

Explanation

Explanation/Reference:

Reference: <https://docs.vmware.com/en/VMware-vSphere/6.5/com.vmware.vsphere.install.doc/GUID-0CDC0898-34C2-4DF5-B7F8-49BEE14D0A85.html>

QUESTION 17

A vSphere Administrator notices that sometimes they receive poor network throughput for multiple port groups that reside on a vSwitch with multiple physical uplinks (vmnics). The configuration on the ESXi host is identical to other hosts that are working properly in the same cluster.

What should be done next?

- A. Restart Management agents in ESXi Using Direct Console User Interface (DCUI).
- B. Add additional port groups to the vSwitch.
- C. Alter the failover order of the vmnics until a bad vmnic is found.
- D. Add additional resources to the virtual machines that are powered on.

Correct Answer: A

Section: (none)

Explanation

Explanation/Reference:



QUESTION 18

When managing search queries in vRealize Log Insight, what three actions can be performed? (Choose three.)

- A. Share the Current Query
- B. Load a Query
- C. Take a Snapshot of a Query
- D. Pause the Current Query
- E. Duplicate a Query

Correct Answer: ABC

Section: (none)

Explanation

Explanation/Reference:

Reference: <https://pubs.vmware.com/log-insight-30/index.jsp#com.vmware.log-insight.user.doc/GUID-0B168CCD-B387-4926-BC7F-39263D8F9CCE.html?resultof=%2522%2573%2565%2561%2572%2563%2568%2522%2520%2522%2571%2575%2565%2572%2569%2565%2573%2522%2520%2522%2571%2575%2565%2572%2569%2522%2520>

QUESTION 19

A vSphere Administrator notices that the newly deployed ESXi hosts cannot stay in a connected state in vCenter Server for more than 60 seconds at a time. The Administrator knows that the hardware is in good health and that the ESXi hypervisors are properly configured.

What is the source of the problem?

- A. The hosts are not a part of a vSphere Distributed Switch.
- B. Firewall rules that have too many ports open.
- C. Firewall rules preventing hosts from sending heartbeats to vCenter Server.
- D. The hosts do not have persistent logging configured.

Correct Answer: C

Section: (none)

Explanation

Explanation/Reference:

Reference: https://kb.vmware.com/selfservice/search.do?cmd=displayKC&docType=kc&docTypeID=DT_KB_1_1&externalId=1029919

QUESTION 20

What is true about a virtual machine with (orphaned) appended to the display name?

- A. The virtual machine has been cloned and removed from vCenter Server's inventory.
- B. The template that the virtual machine was created from no longer exists.
- C. The virtual machine creator no longer wants the virtual machine and has marked it for deletion.
- D. The virtual machine exists in the vCenter Server database, but the ESXi hosts no longer recognize it.

Correct Answer: D

Section: (none)

Explanation

Explanation/Reference:

Reference: https://pubs.vmware.com/vsphere-50/index.jsp?topic=%2Fcom.vmware.vsphere.troubleshooting.doc_50%2FGUID-BFD8C9BC-30FB-4A92-AFEC2FC9FF387920.html

QUESTION 21

Which actions take place when DRS Automation is set to Partially Automated?

- A. Initial placement: Recommended host(s) is displayed.
Migration: Recommendation is executed automatically.
- B. Initial placement: Automatic.
Migration: Recommendation is displayed.
- C. Initial placement: Recommended host(s) is displayed. Migration: Recommendation is displayed.
- D. Initial placement: Automatic.
Migration: Recommendation is executed automatically.

Correct Answer: B

Section: (none)

Explanation

Explanation/Reference:

Reference: <https://pubs.vmware.com/vsphere-51/index.jsp?topic=%2Fcom.vmware.vsphere.resmgmt.doc%2FGUID-E83A6B62-37F8-46D0-8D0AD6A9181979F2.html>

QUESTION 22

Which virtual switch load balancing method should be used when teaming network interfaces with EtherChannel?

- A. Route based on originating virtual port.
- B. Route based on IP hash.



<https://vceplus.com/>

- C. Route based on physical NIC load.
- D. Route based on source MAC hash.
- E. Use explicit failover order.

Correct Answer: B

Section: (none)

Explanation

Explanation/Reference:

Reference: <https://pubs.vmware.com/vsphere-60/index.jsp?topic=%2Fcom.vmware.vsphere.networking.doc%2FGUID-D34B1ADD-B8A7-43CD-AA7E2832A0F7EE76.html>

QUESTION 23

By default, how many login attempts will an ESXi host allow before locking out the account?

- A. 7
- B. 8
- C. 10
- D. 5

Correct Answer: C

Section: (none)

Explanation

Explanation/Reference:

Reference: <https://pubs.vmware.com/vsphere-60/index.jsp?topic=%2Fcom.vmware.vsphere.security.doc%2FGUID-DC96FFDB-F5F2-43EC-8C7305ACDAE6BE43.html>

QUESTION 24

VMware vRealize Log Insight can be configured to send notification events to which endpoint?

- A. vRealize Infrastructure Navigator
- B. vRealize Configuration Manager
- C. vRealize Operations Manager
- D. vCenter Server

Correct Answer: C

Section: (none)

Explanation

Explanation/Reference:

Reference: <https://pubs.vmware.com/log-insight-40/index.jsp?topic=%2Fcom.vmware.log-insight.administration.doc%2FGUID-C73DFC4F-53A6-4F6A-9883A4916AD3AA80.html>

QUESTION 25

Which three actions are available in Troubleshooting Mode in the ESXi Direct Console User Interface (DCUI)? (Choose three.)

- A. Enable ESXi Shell.
- B. Modify DCUI idle timeout.
- C. Modify Password.
- D. Restart Management Network.
- E. Modify SSH timeout.

Correct Answer: ABE

Section: (none)

Explanation

Explanation/Reference:

QUESTION 26

Which are two requirements for vMotion without shared storage? (Choose two.)

- A. The source host must have access to the destination storage.
- B. The hosts must be licensed with vSphere Enterprise Plus.
- C. The destination host must have access to any RDM LUNs.
- D. The source and destination hosts must have identical CPUs.
- E. Hosts must be running vSphere 5.1 or later.

Correct Answer: CE

Section: (none)

Explanation

Explanation/Reference:

Reference: <https://pubs.vmware.com/vsphere-51/index.jsp?topic=%2Fcom.vmware.vsphere.vcenterhost.doc%2FGUID-9F1D4A3B-3392-46A3-872073CBFA000A3C.html>

QUESTION 27

When a vSphere Administrator powers on a VM with the following configuration, what will be the resulting swap file size?

▼  *Memory			
RAM (*)	4	▼	GB ▼
Reservation (*)	2	▼	GB ▼
	<input type="checkbox"/> Reserve all guest memory (All locked)		
Limit (*)	3	▼	GB ▼
Shares	Normal	▼	40960 ▼

- A. 4 GB
- B. 2 GB
- C. 3 GB
- D. 1 GB

Correct Answer: B

Section: (none)

Explanation

Explanation/Reference:

QUESTION 28

ESXi supports which three iSCSI adapters? (Choose three.)

- A. Software
- B. Protocol Endpoint
- C. FCoE
- D. Dependent Hardware
- E. Independent Hardware

Correct Answer: ADE

Section: (none)

Explanation

Explanation/Reference:

Reference: <https://docs.vmware.com/en/VMware-vSphere/5.5/com.vmware.vsphere.storage.doc/GUID-C476065E-C02F-47FA-A5F7-3B3F2FD40EA8.html>

QUESTION 29

What two virtual hardware devices can be added to a powered on VM? (Choose two.)

- A. Virtual disk connected using SCSI controller
- B. Virtual disk connected using IDE controller
- C. Network adapter
- D. Serial Port

Correct Answer: AC

Section: (none)

Explanation

Explanation/Reference:

Reference: https://pubs.vmware.com/vsphere-4-esx-vcenter/index.jsp#com.vmware.vsphere.webaccess.doc_41/adding_hardware_to_a_virtual_machine/t_add_a_network_adapter.html

QUESTION 30

Which three options are available when applying a Customization Specification to an existing virtual machine? (Choose three.)

- A. Modify a specification
- B. Select an existing specification
- C. Import a specification
- D. Create a specification from an existing specification
- E. Create a specification

Correct Answer: BDE

Section: (none)

Explanation

Explanation/Reference:

Reference: https://docs.vmware.com/en/VMware-vSphere/6.5/com.vmware.vsphere.vm_admin.doc/GUID-EB5F090E-723C-4470-B640-50B35D1EC016.html

QUESTION 31

A VMware vSphere 6.x Administrator is tasked with configuring vRealize Log Insight.

What three ports can be used for syslog? (Choose three.)

- A. 514/UDP
- B. 1514/TCP
- C. 8443/TCP
- D. 514/TCP
- E. 123/UDP

Correct Answer: ABD

Section: (none)

Explanation

Explanation/Reference:

Reference: <https://pubs.vmware.com/log-insight-43/index.jsp?topic=%2Fcom.vmware.log-insight.administration.doc%2FGUID-848E4804-3837-4D5E-956E2216B17376AD.html>

QUESTION 32

Which key combination will let a vSphere Administrator revert to the previous version or build of ESXi?

- A. Shift+R
- B. Ctrl+R
- C. Shift+V
- D. Ctrl+Z

Correct Answer: A

Section: (none)

Explanation

Explanation/Reference:

Reference: <https://kb.vmware.com/s/article/1033604>

QUESTION 33

A vSphere Administrator notices that upgrading VMware Tools on a single VM fails. Upon closer inspection, the summary tab shows that the VMware Tools status is unmanaged.

What is true about this virtual machine?

- A. There are not any vSphere users that have permissions for the virtual machine.

- B. The VMware Tools are so old that ESXi fails to upgrade the tools.
- C. The VMware Tools were installed with non-default options chosen.
- D. The VMware tools installed is an Operating System specific Package (OSP).

Correct Answer: D

Section: (none)

Explanation

Explanation/Reference:

Reference: <https://www.slideshare.net/RamPrasadOhnu/vmware-toolsinstallationconfiguration>

QUESTION 34

Which password meets the default password requirements in ESXi 6.x?

- A. Xqavntthi3
- B. xQA!3h
- C. xTaMEhb!
- D. Xqa_hin3

Correct Answer: C

Section: (none)

Explanation

Explanation/Reference:

QUESTION 35

Which two statements are true when configuring a virtual flash resources (vFlash)? (Choose two.)

- A. Virtual Machines cannot reside on the virtual flash resource.
- B. Only Shared Storage can be configured as a virtual flash resource.
- C. vSphere DRS does not support vFlash resources.
- D. vFlash resources are managed at the ESXi host level.

Correct Answer: AD

Section: (none)

Explanation

Explanation/Reference:

QUESTION 36

When adding a new VLAN to an existing virtual distributed switch, which three steps are necessary? (Choose three.)

- A. Right click the vDS and select Distributed Port Group, then select New Distributed Port Group.
- B. Right click on the data center, select Distributed Switch, select New Distributed Switch.
- C. Specify the VLAN ID and VLAN type.
- D. Provide a name for the Distributed Port Group.
- E. Specify the number of physical uplinks form the vDS to the VLAN.

Correct Answer: ACD

Section: (none)

Explanation

Explanation/Reference:

QUESTION 37

What is the maximum supporter number of vCPU per VM in VMware vSphere 6.5?

- A. 256
- B. 128
- C. 32
- D. 64

Correct Answer: B

Section: (none)

Explanation

Explanation/Reference:

Reference: <https://www.vmware.com/pdf/vsphere6/r65/vsphere-65-configuration-maximums.pdf>

QUESTION 38

Which is a valid requirement for deploying the vCenter Server Appliance 6.x to a DRS cluster?

- A. One ESXi host in the cluster must not be in maintenance mode or lockdown mode.
- B. At least one host in the cluster must not be in maintenance mode or lockdown mode.
- C. One ESXi host in the cluster must not be in lockdown mode.
- D. All ESXi hosts in the cluster must not be in maintenance mode.

Correct Answer: B

Section: (none)

Explanation

Explanation/Reference:

Reference: <https://docs.vmware.com/en/VMware-vSphere/6.0/com.vmware.vsphere.install.doc/GUID-E278E0F2-8983-4246-9903-50C4022F1273.html>

QUESTION 39

An ESXi host has limited network connectivity.

What three troubleshooting steps can a vSphere Administrator take? (Choose three.)

- A. Verify that all NICs are configured to support the promiscuous mode.
- B. Verify that portfast (or equivalent) is enabled on all the physical switch ports that the ESXi host is connected to.
- C. Verify that the speed and duplex of the network links are consistent.
- D. Use ESXCLI to verify that the virtual switch NIC teaming is properly set.
- E. Verify that all NICs connected to the same ToR switch are part of the same LAG.

Correct Answer: BCD

Section: (none)

Explanation



Explanation/Reference:

Reference: <https://kb.vmware.com/s/article/1004109>

QUESTION 40

What are two uses of the vRealize Log Insight Agents for Windows and Linux? (Choose two.)

- A. Monitor the state of syslog/eventmgr services
- B. Collect events from flat text files
- C. Control the state of the syslog/eventmgr services
- D. Monitor directories with the filesystem

Correct Answer: AB

Section: (none)

Explanation

Explanation/Reference:

Reference: <https://www.altaro.com/vmware/how-to-set-up-vrealize-log-insight-agents-on-windows-and-linux/>

QUESTION 41

After enabling iSCSI port binding on ESXi hosts, a vSphere Administrator can no longer reach an iSCSI Array Target from the configured software iSCSI initiators. Which can be the root cause for the failure?

- A. All VMkernel ports used for iSCSI connectivity reside in the same broadcast domain and IP subnet.
- B. LACP other link aggregation was used on the ESXi hosts uplinks to connect to the physical switches.
- C. All VMkernel ports used for iSCSI connectivity reside in the same vSwitch.
- D. Array Target iSCSI ports reside in the same broadcast domain and IP subnet as the VMkernel ports.

Correct Answer: B

Section: (none)

Explanation

Explanation/Reference:

QUESTION 42

One of your virtual machines (VM) has performance issues and sometimes is unresponsive.

Which VM file must be checked in order to find the root cause?

- A. vpxd.log
- B. ds.log
- C. vminst.log
- D. vmware.log

Correct Answer: C

Section: (none)

Explanation

Explanation/Reference:

QUESTION 43

ESXi 6.x can be installed upon which three supported hardware configurations? (Choose three.)

- A. Local disk connected through Serial ATA (SATA)
- B. Intel NX/XD disabled for the CPU in the system BIOS
- C. 1 GbE network adapter

- D. 2 GB of physical RAM
- E. Intel NX/XD enabled for the CPU in the system BIOS



<https://vceplus.com/>

Correct Answer: ACE

Section: (none)

Explanation

Explanation/Reference:

Reference: <https://docs.vmware.com/en/VMware-vSphere/6.0/com.vmware.vsphere.install.doc/GUID-DEB8086A-306B-4239-BF76-E354679202FC.html>

QUESTION 44

VM Components Protection (VMCP) can provide automated recovery for which two virtual machine failures? (Choose two.)

- A. All Paths Down
- B. Permanent Device Loss
- C. Firmware failures
- D. Driver Failures

Correct Answer: AB

Section: (none)

Explanation

Explanation/Reference:

Reference: <https://docs.vmware.com/en/VMware-vSphere/6.0/com.vmware.vsphere.avail.doc/GUID-F01F7EB8-FF9D-45E2-A093-5F56A788D027.html>

QUESTION 45

Which two choices are VMware-recommended ESXi syslog configurations? (Choose two.)

- A. Remote logging to a central host.
- B. Store logs in the in-memory filesystem.
- C. Configure persistent logging to a datastore.
- D. Configure logging to the vCenter Server.

Correct Answer: AC

Section: (none)

Explanation

Explanation/Reference:

Explanation:

Take the following measures to increase the security of the host.

- Configure persistent logging to a datastore. By default, the logs on ESXi hosts are stored in the in-memory file system. Therefore, they are lost when you reboot the host, and only 24 hours of log data is stored. When you enable persistent logging, you have a dedicated record of server activity available for the host.
- Remote logging to a central host allows you to gather log files onto a central host, where you can monitor all hosts with a single tool. You can also do aggregate analysis and searching of log data, which might reveal information about things like coordinated attacks on multiple hosts.
- Configure remote secure syslog on ESXi hosts using a remote command line such as vCLI or PowerCLI, or using an API client.
- Query the syslog configuration to make sure that a valid syslog server has been configured, including the correct port.

Reference: <https://pubs.vmware.com/vsphere-51/index.jsp?topic=%2Fcom.vmware.vsphere.security.doc%2FGUID-F35D7005-58EB-48AC-99D5B9942EB2A8EF.html>

QUESTION 46

What are two valid iSCSI discovery methods? (Choose two.)

- A. Assigned Discovery
- B. Automatic Discovery
- C. Static Discovery
- D. LUN Masking
- E. Dynamic Discovery

Correct Answer: CE

Section: (none)

Explanation

Explanation/Reference:

Reference <https://docs.vmware.com/en/VMware-vSphere/6.5/com.vmware.vsphere.storage.doc/GUID-66215AF3-2D81-4D1F-92D4-B9623FC1CB0E.html>

QUESTION 47

A vCenter Server displays this error for a single host:

Virtual machine creation may fail because agent is unable to retrieve VM creation options from the host

Which action will allow a vSphere Administrator to resolve the issue?

- A. Log in to the vSphere Web Client, select the ESXi host and manually place it into Quarantine Mode.
- B. Log in to the vCenter Server Appliance Management UI and reboot the VCSA.
- C. Log in to the vSphere Web Client, select the cluster that the ESXi host belongs to and turn off DRS.
- D. Log in to the host DCUI, press F2 and navigate to Troubleshooting Options> Restart management Agents.

Correct Answer: D

Section: (none)

Explanation

Explanation/Reference:

Reference: <https://kb.vmware.com/s/article/1003490>

**QUESTION 48**

Refer to the Exhibit.

An administrator has been given requirements to configure vMotion for a new virtual machine. The configuration should:

Provide Network Redundancy

Use VLAN 550

Be secured against anyone trying to spoof communication

The vSwitch1 configuration is shown in the Exhibit.

vmotion

All Properties Policies

Properties

Network label	vmotion
VLAN ID	None (0)

Security

Promiscuous mode	Reject
MAC address changes	Accept
Forged transmits	Accept

Traffic shaping

Average bandwidth	--
Peak bandwidth	--
Burst size	--

Teaming and failover

Load balancing	Route based on originating virtual port
Network failure detection	Link status only
Notify switches	Yes
Failback	Yes
Active adapters	vmnic3
Standby adapters	--
Unused adapters	vmnic2

Which three changes should be made to meet the stated requirements? (Choose three.)

- A. The VLAN ID must be set appropriately.
- B. The default values for MAC Address Changes and Forged Transmits must be altered.
- C. The teaming and failover adapters must be set appropriately.
- D. The Traffic Shaping configuration must be altered.
- E. The Load Balancing Policy must be set appropriately.

Correct Answer: ABC

Section: (none)

Explanation

Explanation/Reference:

QUESTION 49

An administrator is troubleshooting basic network connectivity issues.

Which two scenarios are potential issues that this administrator might face? (Choose two.)

- A. The vSwitch is not attached to the correct physical network.
- B. The portgroup is not configured to use correct VLAN.
- C. Traffic shaping is configured incorrectly.
- D. Jumbo frames is configured incorrectly.

Correct Answer: AB

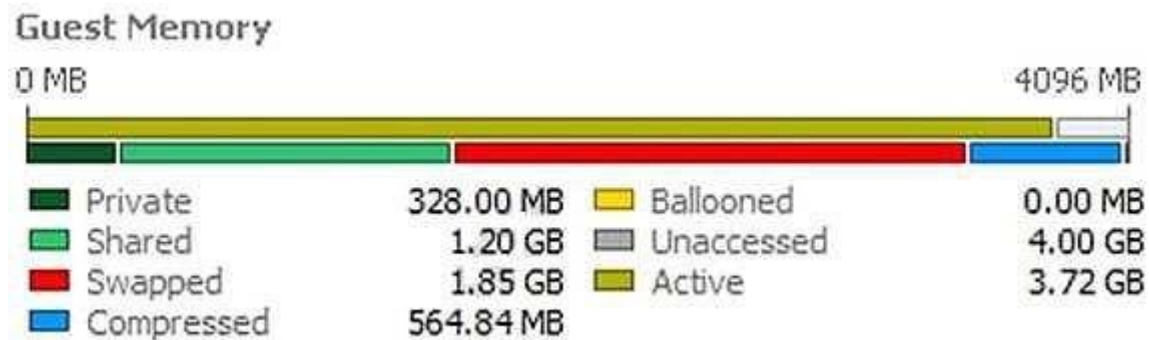
Section: (none)

Explanation

Explanation/Reference:

QUESTION 50

Refer to the Exhibit. A 4 GB Memory virtual machine is experiencing extended memory issues, as shown in the Exhibit.



What potential issues could be attributed to this memory pressure?

- A. A limit is imposed on the virtual memory of this virtual machine.
- B. The Balloon driver has been uninstalled.
- C. A limit has been imposed on the Virtual CPU of the virtual machine.
- D. Storage IO control has been enabled for the virtual machine causing the swapped memory.

Correct Answer: AB

Section: (none)

Explanation

Explanation/Reference:

Explanation:

One of the issue might be that the limit is imposed on the virtual memory of this VM. Secondly, the balloon driver has been uninstalled. That's why it is experiencing memory issues.

QUESTION 51

What is the optimal configuration when building a virtual machine for a single-threaded Windows application?

- A. Deploy single-threaded applications on uniprocessor virtual machines.
- B. Deploy single-threaded applications on symmetric multi-processor virtual machines.
- C. Tune single-threaded applications to take advantage of symmetric multi-processor resources.
- D. Tune Single-threaded applications at the hypervisor level.

Correct Answer: A

Section: (none)

Explanation

Explanation/Reference:

QUESTION 52

An administrator has just completed performing an interactive installation of ESXi 6.x and is booting the host. How is the network initially configured?

- A. The network is configured by Automatic Private IP Addressing (APIPA).
- B. The network is configured based on the settings detected in DNS.
- C. The network is configured with the address as specified in the installer.
- D. The network is automatically configured by DHCP.

Correct Answer: D

Section: (none)

Explanation

Explanation/Reference:



QUESTION 53

What must be enabled to ensure that VM Component Protection (VMCP) works in a High Availability cluster?

- A. VMware Tools Virtual Machine Communication Interface (VMCI)
- B. Fault Tolerance
- C. Atomic Test and Set (ATS)
- D. All Paths Down (APD) Timeout

Correct Answer: D

Section: (none)

Explanation

Explanation/Reference:

Reference: <https://docs.vmware.com/en/VMware-vSphere/6.0/com.vmware.vsphere.avail.doc/GUID-F01F7EB8-FF9D-45E2-A093-5F56A788D027.html>

QUESTION 54

A virtual machine is experiencing performance issues.

The following performance metrics are observed:

- CPU usage value for the virtual machine is above 90%
- CPU ready value for the virtual machine is above 20%

Which two activities will likely resolve the performance issues? (Choose two.)



<https://vceplus.com/>

- A. Set a CPU reservation for the virtual machine. B. Increase the CPU limit on the virtual machine.
- C. Decrease CPU shares equally for all virtual machines on the host.
- D. Increase CPU shares equally for all virtual machines on the host.

Correct Answer: AB

Section: (none)

Explanation



Explanation/Reference:

QUESTION 55

A vApp named Sales has a Memory Limit of 32 GB and a CPU Limit of 12,000 MHz.

There are three virtual machines within the vApp:

Sales-DB -- Has a memory reservation of 20 GB. Sales-DC -- Has a memory reservation of 8 GB. Sales-Web -- Has a memory reservation of 8 GB.

Which statement is correct?

- A. All three virtual machines can power on, but will have memory contention.
- B. All three virtual machines can power on without memory contention.
- C. Only two of the three virtual machines can power on.
- D. Only one of the virtual machines can power on.

Correct Answer: C

Section: (none)

Explanation

Explanation/Reference:

QUESTION 56

Which two configurable options apply to both virtual machine CPU and memory allocation? (Choose two.)

- A. Reservation
- B. Shares
- C. Resource Pool
- D. Reserve All

Correct Answer: AB

Section: (none)

Explanation

Explanation/Reference:



QUESTION 57

What information is required as part of an interactive ESXi 6.x installation?

- A. Keyboard layout
- B. IP Address
- C. Root password
- D. DNS information

Correct Answer: AC

Section: (none)

Explanation

Explanation/Reference:

Reference: <https://docs.vmware.com/en/VMware-vSphere/6.5/com.vmware.vsphere.install.doc/GUID-4CBEADFB-FBBD-49B6-A39C-FC810ECC1E49.html>

QUESTION 58

Which two statements are true about VMFS5 datastores on ESXi 6.x? (Choose two.)

- A. Virtual Disk (VMDK) size can be larger than 2TB.

- B. Datastore extent size can be larger than 2TB.
- C. Only Physical Mode Raw Device Map (Passthrough-RDM) can be larger than 2TB.
- D. 2MB block size is required to support larger than 2TB file size.

Correct Answer: AB

Section: (none)

Explanation

Explanation/Reference:

QUESTION 59

Which two SMTP Notification Event Details are specific to alarms triggered by events? (Choose two.)

- A. User Name
- B. Summary
- C. Old Status
- D. Target

Correct Answer: AB

Section: (none)

Explanation

Explanation/Reference:

QUESTION 60

An administrator is upgrading a vSphere Distributed Switch. The existing switch is version 5.0 and the administrator wants to upgrade to the latest version possible. The environment contains several ESXi 5.1 hosts.

Which two options are available to ensure that the upgraded switch will be compatible with these hosts? (Choose two.)

- A. Upgrade the vSphere Distributed Switch to 5.5
- B. Upgrade the ESXi 5.1 hosts to version 5.5, then upgrade the vSphere Distributed Switch to 5.5
- C. Upgrade the vSphere Distributed Switch to 5.1
- D. Upgrade the ESXi host switches to 5.5, then upgrade the vSphere Distributed Switch to 5.5

Correct Answer: BC

Section: (none)

Explanation

Explanation/Reference:

QUESTION 61

Which two actions are required when enabling vFlash Read Cache for a virtual machine's virtual disk? (Choose two.)

- A. A value in the Virtual Flash Read Cache text box must be entered.
- B. A Flash Resource Pool for Cache size reservation must be entered.
- C. The Device backing and the block size must be configured.
- D. The Enable virtual flash host swap cache check box must be selected.

Correct Answer: AD

Section: (none)

Explanation

Explanation/Reference:

QUESTION 62

An administrator is re-provisioning an ESXi host and moving it to another datacenter.

Which DCUI option should the administrator use to revert the system configuration to the default settings?

- A. Reset System Configuration
- B. Rebuild Default System Configuration
- C. Revert System Configuration
- D. Renew Default System Configuration

Correct Answer: A

Section: (none)

Explanation

Explanation/Reference:

QUESTION 63

An administrator creates an ESXi cluster using vSphere Auto Deploy.

The ESXi hosts are configured to get a management IP address from a DHCP server.

The administrator needs to troubleshoot the management network on one of the hosts.

Which DCUI option should the administrator use to renew the DHCP lease?

- A. Restart Management Network
- B. Restore Network Settings
- C. Test Management Network
- D. Configure Management Network

Correct Answer: A

Section: (none)

Explanation

Explanation/Reference:

QUESTION 64

A user wants to monitor a business-critical virtual machine to ensure that it doesn't run out of resources. What metric could be monitored in vRealize Operations to address this concern?

- A. Time Remaining badge
- B. Compliance badge
- C. Reclaimable Waste badge
- D. Density badge



Correct Answer: A

Section: (none)

Explanation

Explanation/Reference:

QUESTION 65

Which type of Adapter does not require vmkernel networking?

- A. Independent Hardware iSCSI Adapter
- B. Dependent Hardware iSCSI Adapter
- C. Software iSCSI AdapterD. Software FCoE Adapter

Correct Answer: A

Section: (none)

Explanation

Explanation/Reference:

QUESTION 66

A mission-critical virtual machine built on vSphere 4.1 needs to be moved to an ESXi 6.x host. Which virtual hardware version is needed to move the virtual machine without upgrading?

- A. 6
- B. 7
- C. 10
- D. 11

Correct Answer: B

Section: (none)

Explanation

Explanation/Reference:

QUESTION 67

What is the effective vSphere licensing level during the 60 day evaluation period?

- A. vSphere Foundation Essentials Plus
- B. vSphere Standard
- C. vSphere Enterprise
- D. vSphere Enterprise Plus

Correct Answer: D

Section: (none)

Explanation

Explanation/Reference:

QUESTION 68

Which vSphere 6.x feature will allow an organization to utilize native snapshots?

- A. Virtual Volumes
- B. Virtual SAN
- C. VMFS3

D. VMFS5

Correct Answer: A

Section: (none)

Explanation

Explanation/Reference:

QUESTION 69

An administrator is tasked with performing a vMotion migration of a virtual machine.

The virtual machine is configured as follows:

- vSphere Flash Read Cache (vFRC) enabled
- Is part of a Distributed Resource Cluster (DRS) Cluster

Which two statements are true? (Choose two.)

- A. Each ESXi host in the cluster supports multiple virtual flash resources.
- B. Each ESXi host in the cluster supports one virtual flash resource.
- C. DRS treats powered-on virtual machines with Flash Read Cache as having a preferred affinity to their current host and moves them only for mandatory reasons.
- D. DRS treats powered-on virtual machines with Flash Read Cache as having a required affinity to their current host and does not move them.

Correct Answer: BC

Section: (none)

Explanation

Explanation/Reference:

QUESTION 70

The vSphere administrator attempts to connect to an ESXi host via an SSH client and receives the following security alert:



The vSphere administrator needs to determine whether the RSA key fingerprint shown in the security alert is the fingerprint of the intended ESXi host.

Which tool should the vSphere administrator use?

- A. Direct Console User Interface
- B. vSphere Client
- C. vSphere Web Client
- D. vSphere Management Assistant

Correct Answer: A

Section: (none)

Explanation

Explanation/Reference:

QUESTION 71

An administrator deploys vCenter Server using the embedded Platform Services Controller.

After testing the deployment for a couple of months, it is determined that the environment would be better served with an external Platform Services Controller.

What should the administrator do to meet this new requirement?

- A. Deploy a fresh instance of vCenter Server with an external Platform Services Controller.
- B. Perform a fresh install of an external Platform Services Controller.
- C. Migrate the embedded Platform Services Controller to an external Platform Services Controller.
- D. Upgrade the embedded Platform Services Controller to an external Platform Services Controller.

Correct Answer: A

Section: (none)

Explanation

Explanation/Reference:

QUESTION 72

What happens to the status of users already logged into ESXi Shell when a vSphere administrator enables lockdown mode?

- A. Users remain logged in and can run commands, except to disable lockdown mode.
- B. Users remain logged in and can run commands, including disabling lockdown mode.
- C. Users are immediately logged out of ESXi Shell.
- D. Users are logged out after a timeout specified by the vSphere administrator.

Correct Answer: A

Section: (none)

Explanation

Explanation/Reference:

QUESTION 73

During an upgrade, the ESXi 6.x installer finds an existing version of ESXi and a VMFS3 volume. No virtual machines exist on the host or VMFS3 volume. The requirement is to upgrade to VMFS5.

Which option should be chosen to meet this requirement?

- A. Upgrade ESXi and preserve the VMFS datastore
- B. Install ESXi and preserve the VMFS datastore
- C. Install ESXi and overwrite the VMFS datastore
- D. Upgrade ESXi and overwrite the VMFS datastore

Correct Answer: C

Section: (none)

Explanation

Explanation/Reference:

QUESTION 74

An administrator has unsuccessfully attempted several times to install an Operating System inside a virtual machine. The administrator finds that the installation fails at random intervals.

Which two actions can be taken to resolve this issue? (Choose two.)

- A. Verify the md5sum and if invalid, download the installation files again.
- B. Attempt the installation an additional time.
- C. Attempt to use a different installation media or installation method.
- D. Create a new virtual machine and attempt the installation with the existing media.

Correct Answer: AC

Section: (none)

Explanation



Explanation/Reference:

QUESTION 75

Refer to the Exhibit. A storage administrator has reported that full utilization of all bandwidth from an ESXi 6.x host is not being seen. In troubleshooting the issue, the Adapter details are shown in the Exhibit.

Adapter Details

Properties Devices Paths			
<input type="button" value="Enable"/> <input type="button" value="Disable"/>			
Runtime Name	Target	LUN	Status
vmhba2:C0:T3:L0	50:06:01:60:c7:20:6a:a4 50:06:0...	0	Active (I/O)
vmhba2:C0:T2:L0	50:06:01:60:c7:20:6a:a4 50:06:0...	0	Active (I/O)
vmhba2:C0:T1:L0	50:06:01:60:c7:20:6a:a4 50:06:0...	0	Disabled
vmhba2:C0:T0:L0	50:06:01:60:c7:20:6a:a4 50:06:0...	0	Active

Based on the exhibit, what is cause of the issue?

- A. The array is not setup to use the correct multipathing policy.
- B. There are no virtual machines on the ESXi host.
- C. Not all links are used because a path is disabled.
- D. Another path needs to be configured.

Correct Answer: C

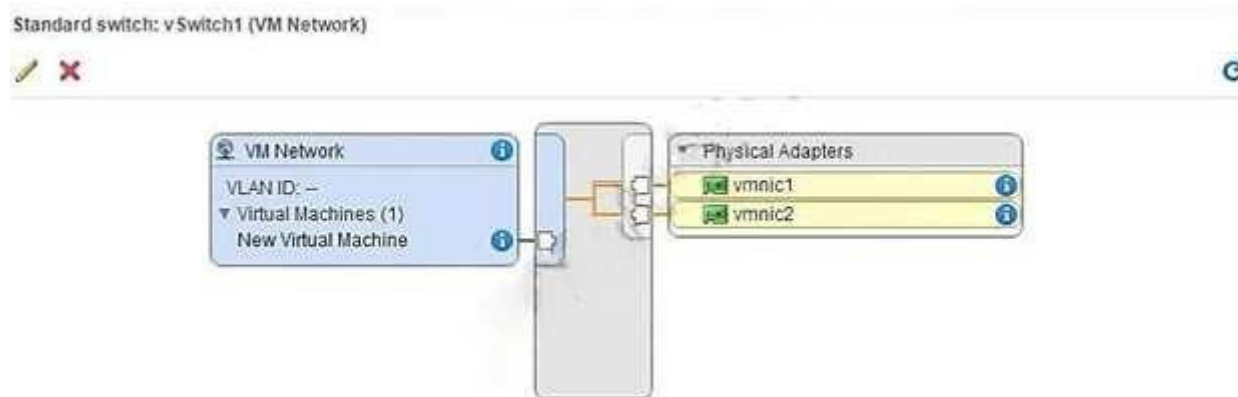
Section: (none)

Explanation

Explanation/Reference:

QUESTION 76

Refer to the Exhibit. An administrator has configured network connectivity for a new virtual machine, as shown in the Exhibit.



What will occur with the network traffic of this virtual machine when communicating externally from vSwitch1?

- A. The virtual machine will communicate on both uplinks
- B. The virtual machine will only communicate on vmnic1
- C. The virtual machine will only communicate on vmnic2
- D. The virtual machine will fail to communicate externally

Correct Answer: D

Section: (none)

Explanation

Explanation/Reference:

QUESTION 77

Refer to the Exhibit. An administrator is adding an NFS datastore as shown in the Exhibit.

New Datastore

1 Location

2 Type

3 Select NFS version

4 Name and configuration

5 Configure Kerberos authentication

6 Ready to complete

Datastore name: Datastore 1

NFS Share Details

Enter the NFS share details. If the server that will back this datastore has trunking enabled, below you can enter additional IPs, which the ESX will use to achieve multipathing to this NFS server mount point.

Folder: /bnt1

E.g: /datastore-001

Server(s):

E.g: nas, nas.it.com or 192.168.0.1

×

Filter

Servers to be added

10.21.16.253

10.21.16.252

2 items

If you intend to configure an existing datastore on new hosts in the datacenter, it is recommended to use the "Mount to additional hosts" action instead.

Access Mode

☐ Mount NFS as read-only

Back

Next

Finish

Cancel

What is the purpose of the Servers to be added list?

- A. It contains the IP addresses of the NFS Storage Server to provide multipathing capability.
- B. It contains the IP addresses of the ESXi hosts that mount the datastore.

www.vceplus.com - VCE Exam Simulator - Download A+ VCE (latest) free Open VCE Exams - VCE to PDF Converter - PDF Online

- C. It contains the IP addresses used for Dynamic Discovery of targets.
- D. It contains the IP addresses used for Static Discovery of targets.

Correct Answer: A

Section: (none)

Explanation

Explanation/Reference:

QUESTION 78

Which two actions are prerequisites to adding ESXi 6.x hosts to a vSphere Distributed Switch? (Choose two.)

- A. Verify that there is at least one Distributed Port Group on the Distributed Switch.
- B. Verify that the Distributed Port Group have active uplinks configured in its teaming and failover policy.
- C. Verify that the Distributed Switch has been configured with a Network Profile.
- D. Verify that Network I/O control for Management Traffic is configured for the highest share value.

Correct Answer: AB

Section: (none)

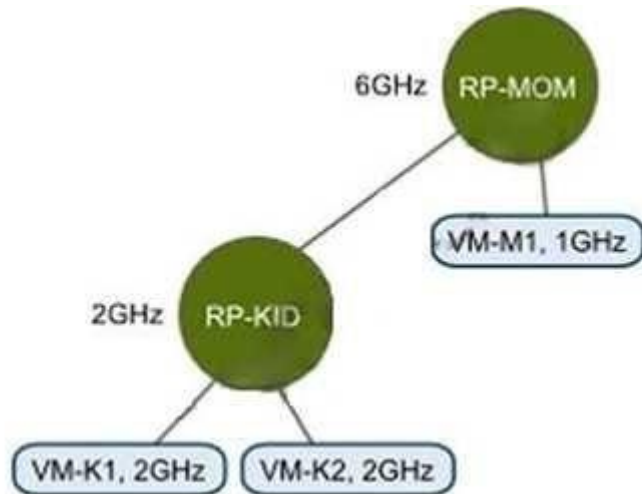
Explanation



Explanation/Reference:

QUESTION 79

Refer to the Exhibit. An administrator has created the resource pool configuration shown in the Exhibit.



Based on the exhibit, which virtual machine(s) can be successfully powered on?

- A. VM-M1 only
- B. VM-K1 only
- C. VM-K1 and VM-K2 only
- D. VM-K1, VM-K2, and VM-M1

Correct Answer: D

Section: (none)

Explanation

Explanation/Reference:

QUESTION 80

You are creating a virtual machine in the Web Client using the New Virtual Machine wizard.

Which two steps are required? (Choose two.)

- A. Select a valid name.
- B. Select a cluster for the compute resource.

- C. Select a network adapter.
- D. Select the virtual machine compatibility.

Correct Answer: AD

Section: (none)

Explanation

Explanation/Reference:

QUESTION 81

An administrator is migrating a virtual machine from a Test cluster to a Production cluster.

The two environments do not have any shared storage.

What is the easiest way to accomplish this task?

- A. Perform a Storage vMotion.
- B. Perform a regular vMotion.
- C. Perform a Virtual to Virtual migration.
- D. Perform a backup and restore using VMware Data Protection.



Correct Answer: B

Section: (none)

Explanation

Explanation/Reference:

QUESTION 82

A vSphere administrator has been using vSphere in evaluation mode and now wants to deploy an environment that provides the same features.

Which edition of vSphere provides similar functionality to evaluation mode?

- A. Enterprise Plus
- B. EnterpriseC. Standard
- D. Essentials

Correct Answer: A

Section: (none)

Explanation

Explanation/Reference:

QUESTION 83

An administrator creates an ESXi cluster using vSphere Auto Deploy. The ESXi hosts are configured to get a management IP address from a DHCP server. The administrator needs to troubleshoot the management network on one of the hosts. Which DCUI option should the administrator use to renew the DHCP lease?



<https://vceplus.com/>

- A. Restart Management Network
- B. Restore Network Settings
- C. Test Management Network
- D. Configure Management Network



Correct Answer: A

Section: (none)

Explanation

Explanation/Reference:

QUESTION 84

After selecting an object in vRealize Operations, how can a user compare the badge values of related child objects?

- A. Use the Scoreboard tab
- B. Use the Relationship tab
- C. Use the Members tab
- D. Use the Overview tab

Correct Answer: A

Section: (none)

Explanation

Explanation/Reference:

QUESTION 85

How many Link Aggregation Groups (LAGs) can be configured on a vSphere 6.x Distributed Switch?

- A. 64
- B. 96
- C. 128
- D. 256

Correct Answer: A

Section: (none)

Explanation

Explanation/Reference:



QUESTION 86

Which two NFS Protocol versions does vSphere 6 support? (Choose two.)

- A. Version 3
- B. Version 3.1 C. Version 4
- D. Version 4.1

Correct Answer: AD

Section: (none)

Explanation

Explanation/Reference:

QUESTION 87

An administrator is attempting to restore a number of files in a directory within the Operating System of a virtual machine. How can the administrator restore the files from a previous backup?

- A. Use the File Level Restore option from the selected backup of the virtual machine in the vSphere Web Client.
- B. Connect to the File Level Restore tool from a web browser in the virtual machine.
- C. Connect to the File Level Restore tool from the VMware Data Protection appliance.
- D. Use the File Level Restore option from the selected backup of the virtual machine in the vSphere Client.

Correct Answer: B

Section: (none)

Explanation

Explanation/Reference:

QUESTION 88

An organization has a number of virtual machines that would benefit from Fault Tolerance.

These include:

- A single vCPU Apache Server
- A dual vCPU vCenter Server
- A quad vCPU SQL Server
- An eight vCPU Hadoop Server

Which two virtual machines can be configured to use VMware Fault Tolerance? (Choose two.)

- A. Apache Server
- B. vCenter Server
- C. SQL Server
- D. Hadoop Server

Correct Answer: AC

Section: (none)

Explanation

Explanation/Reference:

QUESTION 89

From which two locations in the inventory hierarchy can you deploy a virtual machine using a template? (Choose two.)

- A. Directly from the template.

- B. From a compute resource.
- C. From an existing virtual machine.
- D. From a Datastore.

Correct Answer: AB

Section: (none)

Explanation

Explanation/Reference:

QUESTION 90

What is a benefit of using Enhanced vMotion Compatibility for an environment?

- A. EVC masks CPU features to allow compatibility between hosts that are dissimilar.
- B. EVC allows for cross platform vMotion to occur.
- C. EVC enables Long Distance vMotion.
- D. EVC enables Storage vMotion functionality.

Correct Answer: A

Section: (none)

Explanation

Explanation/Reference:



QUESTION 91

What are three valid disk configurations for the vSphere Data Protection 6.x Appliance? (Choose three.)

- A. 500GB
- B. 1TB
- C. 1.5TB
- D. 2TB
- E. 4TB

Correct Answer: ABD

Section: (none)

Explanation

Explanation/Reference:

QUESTION 92

Your manager has given you a bash script that retrieves data for ESXi 6.x host configurations. This data needs to be collected right after the installation of a host and must be run directly on the host. Which two actions can be used to run this script on an ESXi host? (Choose two.)

- A. Connect to the host with Ruby vSphere Console and run the script from there.
- B. Enable SSH access from the Direct Console User Interface.
- C. Enable the ESXi Shell from the Direct Console User Interface.
- D. Run the script directly from the vSphere Web Client.

Correct Answer: BC

Section: (none)

Explanation

Explanation/Reference:

QUESTION 93

How are ports scaled on vSphere Standard Switches (vSS)?

- A. Ports on a vSS can be dynamically scaled up and down.
- B. Ports on a vSS can only be statically scaled up or down.
- C. Ports on a vSS can only be dynamically scaled down.
- D. Ports on a vSS can only be dynamically scaled up.

Correct Answer: A

Section: (none)

Explanation

Explanation/Reference:

QUESTION 94

An administrator has configured an alarm to be notified when a virtual machine meets two conditions:

high virtual CPU



high active memory consumption

The alarm is malfunctioning and triggering when either condition is met instead of both.
What can be done to correct the issue?

- A. Edit the alarm and select Trigger if ALL of the following conditions are satisfied.
- B. Edit the alarm and select Trigger if ANY of the following conditions are satisfied.
- C. Create two separate alarms, one for CPU and one for memory.
- D. Delete the existing alarm and create a new event based alarm.

Correct Answer: A

Section: (none)

Explanation

Explanation/Reference:

QUESTION 95

Refer to the Exhibit. A storage administrator is not seeing full utilization of all bandwidth from an ESXi host. The vSphere administrator observes the adapter details, as shown in the Exhibit.

Adapter Details

Runtime Name	Target	LUN	Status
vmhba2:C0:T3:L0	50:06:01:60:c7:20:6a:a4 50:06:0...	0	Active (I/O)
vmhba2:C0:T2:L0	50:06:01:60:c7:20:6a:a4 50:06:0...	0	Active (I/O)
vmhba2:C0:T1:L0	50:06:01:60:c7:20:6a:a4 50:06:0...	0	Disabled
vmhba2:C0:T0:L0	50:06:01:60:c7:20:6a:a4 50:06:0...	0	Active

What is the probable cause of this issue?

- A. Another path needs to be used to allow full utilization of the bandwidth.
- B. The array is not setup to use the correct multipathing policy.
- C. There are no virtual machines on the host.
- D. No traffic is being sent across it because a path failed.

Correct Answer: D

Section: (none)

Explanation

Explanation/Reference:

QUESTION 96

When is it possible to place a VMFS5 datastore in maintenance mode?

- A. When it is a member of a Storage DRS cluster
- B. When it is a member of Virtual SAN cluster
- C. When it is a member of a multi-extent datastore
- D. When it is a member of a Virtual Volume

Correct Answer: A

Section: (none)

Explanation

Explanation/Reference:

QUESTION 97

Which vSphere 6 Enterprise Edition feature will allow an organization to ensure that critical multi-threaded applications have the maximum possible uptime?

- A. Fault Tolerance
- B. High Availability
- C. Distributed Resource Scheduler
- D. App HA

Correct Answer: A

Section: (none)

Explanation



Explanation/Reference:

QUESTION 98

Why are some virtual machines orphaned after rebooting a High Availability (HA) enabled host?

- A. The Orphaned virtual machines have HA restart disabled.
- B. The Orphaned virtual machines moved recently and the change did not persist.
- C. The host is attached to failed storage.
- D. The host just came out of maintenance mode.

Correct Answer: A

Section: (none)

Explanation

Explanation/Reference:

QUESTION 99

An administrator creates a DRS cluster of eight ESXi 6.x hosts. There are 10 virtual machines balanced across the hosts. An attempt to place the first host into maintenance mode fails.

What are two reasons that the host failed to enter maintenance mode? (Choose two.)

- A. The DRS cluster Automation Level is set to Partially Automated mode.
- B. One of the virtual machines on the ESXi Host entering maintenance mode is configured with a DRS Host affinity rule Should run on hosts in group.
- C. One of the virtual machines on the ESXi Host entering maintenance mode is configured with a DRS Host affinity rule Must run on hosts in group.
- D. One of the virtual machines on the ESXi Host entering maintenance mode is configured with an individual Automation Level set to Partially Automated.

Correct Answer: AD

Section: (none)

Explanation

Explanation/Reference:

QUESTION 100

An administrator is attempting to migrate a large Hadoop virtual machine using vMotion.

The administrator notices a delay when the machine is quiesced. The Hadoop virtual machine is processing many transactions a second to an in-memory database. Which two actions would help reduce the amount of time needed to perform a vMotion on this virtual machine? (Choose two.)

- A. Use multiple NICs for the vMotion vmkernel port.
- B. Use a 10Gbps Network card for the vMotion vmkernel port.
- C. Add an additional management network to help transmit the data quicker.
- D. Disable Fault Tolerance before performing the vMotion.

Correct Answer: AB

Section: (none)

Explanation

Explanation/Reference:

QUESTION 101

Which statement is true regarding the licensing of vCenter Server?

- A. The license for vCenter Server must be provided at the time of installation.
- B. Changing the license assigned to vCenter Server requires a restart of the vCenter Server service.
- C. Virtual machines can still be powered on if the vCenter Server license expires.
- D. Licensing for a single vCenter Server installation is determined by the number of managed virtual machines.

Correct Answer: C

Section: (none)

Explanation

Explanation/Reference:

QUESTION 102

An administrator needs to verify that vMotion operations can be performed in a vSphere data center.

What round trip time (RTT) latency is the maximum value that will allow vMotion operations to succeed?

- A. 50ms RTT
- B. 100ms RTT



<https://vceplus.com/>

- C. 150ms RTT
- D. 200ms RTT

Correct Answer: B

Section: (none)

Explanation

Explanation/Reference:



QUESTION 103

What is a valid plug-in status for a plug-in that has been added to a vSphere client?

- A. Disabled
- B. Unknown
- C. Stopped
- D. Installed

Correct Answer: A

Section: (none)

Explanation

Explanation/Reference:

QUESTION 104

A virtual machine has been renamed and an administrator is unable to find files with the new virtual machine name in the datastore.

What is the reason for this?

- A. The names of the files on the datastore do not change.
- B. The names of the files on the datastore have been corrupted.
- C. The virtual machine needs to be re-added to the inventory.
- D. The Distributed Resource Scheduler moved the virtual machine to another host.

Correct Answer: A

Section: (none)

Explanation

Explanation/Reference:

QUESTION 105

A new vApp was built and tested in the corporate headquarters datacenter running vSphere 6.x.

What condition would explain why the virtual machine is failing to boot in an offsite datacenter running on vSphere 5.5?

- A. The virtual machine was built with the default hardware version.
- B. The VMFS 5 datastore is not compatible with virtual machines configured with vSphere 6.x.
- C. A DRS 5.5 cluster cannot run virtual machines configured with vSphere 6.x.
- D. The VMDK file is locked.

Correct Answer: A

Section: (none)

Explanation

Explanation/Reference:

QUESTION 106

When configuring vSphere Replication for a virtual machine, what is the lowest Recovery Point Objective (RPO) that can be selected?

- A. 1 min
- B. 5 min
- C. 10 min
- D. 15min

Correct Answer: B

Section: (none)

Explanation

Explanation/Reference:

QUESTION 107

Which two Fibre Channel zoning options are supported with vSphere 6.x? (Choose two.)

- A. Single-Initiator
- B. Single-Initiator-Single-Target
- C. Multiple-Initiators-Single-Target
- D. Multiple-Initiators-Multiple-Targets

Correct Answer: AB

Section: (none)

Explanation

Explanation/Reference:



QUESTION 108

Which two are true about the Risk badge in vRealize Operations? (Choose two.)

- A. The Risk badge indicates potential future problems that may degrade the performance of the system.
- B. Risks may require attention in the near future.
- C. The Risk badge indicates problems that are degrading performance of the system.
- D. Risks require attention now to correct system performance problems.

Correct Answer: AB

Section: (none)

Explanation

Explanation/Reference:

QUESTION 109

When attempting to power on a Virtual Machine you observe the following error:

Cannot open the disk '/vmfs/volumes/volume/vm/vm-000002.vmdk' or one of the snapshot disks it depends on.

Which three actions will be the best solutions to address this problem? (Choose three.)

- A. Verify that the virtual machine's disk files are present.
- B. Investigate the host and virtual machine log files.
- C. Verify the vmdk descriptor files and if required, recreate them.
- D. Delete the disk file preventing the power on operation.
- E. Migrate or register the virtual machine to a different host.

Correct Answer: ABC

Section: (none)

Explanation

Explanation/Reference:

QUESTION 110

Which two allow for the disabling of Network Rollback operations? (Choose two.)

- A. Modifying the vpxd advanced configuration options and adding the config.vpxd.network.rollback key
- B. Modifying the C:\ProgramData\VMware\CIS\cfg\vmware-vpx\vpzd.cfg file and adjusting the <rollback> xml tag
- C. Modifying the C:\ProgramData\VMware\CIS\cfg\vmware-vpx\vpzd.cfg file and adjusting the <networkrollback> xml tag
- D. Modifying the C:\ProgramData\VMware\CIS\cfg\vmware-vpx\firstboot\vpzd-service- spec.prop file and adjusting the <rollback> xml tag

Correct Answer: AB

Section: (none)

Explanation

Explanation/Reference:

QUESTION 111

An administrator is configuring the Failover Order option on a vSphere Distributed Switch.

Which two options should be used with IP-hash load balancing? (Choose two.)

- A. Active Uplinks
- B. Standby Uplinks
- C. Unused Uplinks

D. Override Failover Order

Correct Answer: AC

Section: (none)

Explanation

Explanation/Reference:

QUESTION 112

An administrator receives a report that no real time statistics are available for a virtual machine in the vCenter Server inventory. Which two statements indicate likely causes of the problem? (Choose two.)

- A. The virtual machine is powered off.
- B. The host containing the virtual machine is disconnected from vCenter Server.
- C. There is insufficient real time data to display the information.
- D. The vCenter Server service is not running.

Correct Answer: AB

Section: (none)

Explanation

Explanation/Reference:



QUESTION 113

Which three actions can be executed when an alarm is triggered? (Choose three.)

- A. Send an email.
- B. Send an SNMP trap.
- C. Run a script or command.
- D. Run an Orchestrator workflow.
- E. Send a trigger to syslog.

Correct Answer: ABC

Section: (none)

Explanation

Explanation/Reference:

QUESTION 114

Which two events happen when Distributed Resource Scheduler (DRS) is disabled? (Choose two.)

- A. The cluster's resource pool heirarchy and affinity rules are re-established when DRS is turned back on.
- B. The cluster's resource pool hierarchy and affinity rules are not re-established when DRS is turned back on.
- C. The cluster's resource pools are removed from the cluster.
- D. The cluster's resource pools are removed from the cluster and assigned to the hosts.

Correct Answer: BC

Section: (none)

Explanation

Explanation/Reference:

QUESTION 115

An administrator attempts to create a Thick Provisioned Virtual Disk (VMDK) on an NFS datastore; but it fails.

Which two reasons would explain the failure? (Choose two.)

- A. Datastore is on an NFS 3 storage server that does not support Hardware Acceleration
- B. Datastore is on an NFS 4.1 storage server
- C. Only VMFS datastores support "Thick Provisioned" VMDK
- D. The NFS datastore was not created on a "Thick Provisioned" device

Correct Answer: AB

Section: (none)

Explanation

Explanation/Reference:

QUESTION 116

A small company wants to use VMware products for its production systems. The system administrator needs to recommend a solution that will deliver High Availability to the company's production applications.

What is minimum vSphere offering that will support this requirement?

- A. vSphere Essentials
- B. vSphere Essentials Plus

- C. vSphere Hypervisor
- D. vSphere Standard

Correct Answer: B

Section: (none)

Explanation

Explanation/Reference:

QUESTION 117

Which two options would allow a database administrator, with no access to the vSphere infrastructure, to connect to a virtual machine? (Choose two.)

- A. Use the Virtual Machine Remote Console (VMRC).
- B. Use Remote Desktop Protocol (RDP) to connect.
- C. Ask the vSphere administrator to grant permission to access the console through vCenter Server.
- D. Ask the vSphere administrator to grant permission to access with the Horizon View Direct Connect Client.

Correct Answer: BC

Section: (none)

Explanation



Explanation/Reference:

QUESTION 118

A vCenter Operations Manager 5.7 environment is upgraded to vRealize Operations. After the upgrade, the analytics services fail to start.

Which three steps must be taken to resolve the problem? (Choose three.)

- A. Take the vRealize Operations cluster offline.
- B. Delete the activity persistence files.
- C. Bring the cluster back online.
- D. Remove any unresponsive nodes.
- E. Stop the CaSA service.

Correct Answer: ABC

Section: (none)

Explanation

Explanation/Reference:

QUESTION 119

Refer to the Exhibit. An administrator is analyzing a virtual machine as shown in the Exhibit.



What is the current long term risk for this virtual machine?

- A. The virtual machine may run out of memory before April 27.
- B. The virtual machine may continue to function after April 27.
- C. The virtual machine has adequate memory configured for operation for the next 120 days.
- D. The virtual machine has adequate memory reservation configured for operation for the next 120 days.

Correct Answer: A

Section: (none)

Explanation

Explanation/Reference:

QUESTION 120

Which two statements are correct when turning off a Distributed Resource Scheduler (DRS) Cluster? (Choose two.)

- A. The resource pool hierarchy of the DRS cluster is maintained.
- B. The resource pool hierarchy of the DRS cluster is removed.

- C. The affinity settings of the DRS cluster are removed and not maintained when DRS is re-enabled.
- D. The affinity settings of the DRS cluster are maintained when DRS is re-enabled.

Correct Answer: BC

Section: (none)

Explanation

Explanation/Reference:

QUESTION 121

Which three operations occur during a cold migration of a virtual machine? (Choose three.)

- A. The virtual machine disks are moved if the datastore is being changed.
- B. The virtual machine is registered with the destination server.
- C. The source virtual machine is removed from the old hosts.
- D. The virtual machine hardware is upgraded.
- E. The virtual machine files are quiesced prior to the migration.

Correct Answer: ABC

Section: (none)

Explanation

Explanation/Reference:

QUESTION 122

A vSphere administrator needs to backup a virtual machine that has a Microsoft SQL Server Database installed.

Which solution allows for an application quiesce to occur during backup?



<https://vceplus.com/> A. VMware

vCenter Converter

- B. VMware vCenter Site Recovery Manager
- C. VMware vSphere Replication
- D. VMware vSphere Data Protection Advanced

Correct Answer: D

Section: (none)

Explanation

Explanation/Reference:

QUESTION 123

An administrator has a virtual machine that requires four times the compute resources than other virtual machines on the same ESXi 6.x host.

How should the administrator configure the virtual machine settings, in order to be prepared for any resource contention?

- A. Set the shares of the priority virtual machine to High and the rest to Low.
- B. Set the shares of the priority virtual machine to High.
- C. Set the shares of the priority virtual machine to High and the rest to Normal.
- D. Set the shares of the priority virtual machine to Normal and the rest to Low.

Correct Answer: A

Section: (none)

Explanation

Explanation/Reference:

QUESTION 124

An administrator is using the Host Failures to Tolerate Admission Control Policy for a vSphere High Availability (HA) cluster. When configuring this setting on the cluster, the administrator sees this error message:

Insufficient resources to satisfy HA failover level on cluster

What are two likely causes for the error? (Choose two.)

- A. The hosts in the cluster are disconnected.
- B. A host in the cluster is displaying an HA error.
- C. Distributed Resource Scheduler has not been configured on the cluster.
- D. Virtual Machine Component Protection has not been turned on.

Correct Answer: AB

Section: (none)

Explanation

Explanation/Reference:

QUESTION 125

An administrator is only able to see the Health Badge when using the vRealize Operations user interface. What is the likely cause of this behavior?

- A. The vRealize Operations Foundation License is in use.
- B. The vmware-sps service failed to start.
- C. The vRealize Operations Standard License is in use.
- D. The vmware-rbd-watchdog service failed to start.



Correct Answer: A

Section: (none)

Explanation

Explanation/Reference:

QUESTION 126

Which two components can be used when configuring Enhanced Linked Mode? (Choose two.)

- A. vCenter Server Appliance
- B. vRealize Operations Manager
- C. vSphere Management Appliance
- D. vCenter Server for Windows

Correct Answer: AD

Section: (none)

Explanation

Explanation/Reference:

QUESTION 127

A company has recently incurred financial loss, due to a crashed server that resulted in the loss of critical data.

Which two vSphere 6.x features should this company implement to protect against losing critical data due to physical server failure? (Choose two.)

- A. Virtual Volumes
- B. Enhanced vMotion Capability
- C. High Availability
- D. Fault Tolerance

Correct Answer: CD

Section: (none)

Explanation

Explanation/Reference:



QUESTION 128

Which three vSphere 6.x features require a shared storage infrastructure to work properly? (Choose three.)

- A. Storage Policy Based Management
- B. vSphere Distributed Switch
- C. Fault Tolerance
- D. Distributed Power Management
- E. Dynamic Resource Scheduler

Correct Answer: CDE

Section: (none)

Explanation

Explanation/Reference:

QUESTION 129

Which vSphere 6.x feature would you choose for offsite disaster recovery?

- A. Distributed Power Management
- B. vSphere HA
- C. vSphere Data Protection
- D. Dynamic Resource Scheduler

Correct Answer: C

Section: (none)

Explanation

Explanation/Reference:

QUESTION 130

An IT administrator working in a space agency has just installed some applications that are critical for a satellite launch mission. The administrator wants the applications to work irrespective of any operating system failure.

Which vSphere 6.x feature should the administrator use?

- A. vSphere HA
- B. vSphere Fault Tolerance
- C. vSphere Replication
- D. vSphere Data Protection



Correct Answer: B

Section: (none)

Explanation

Explanation/Reference:

QUESTION 131

Which vSphere 6.x storage service provides array-based operations at the virtual disk level?

- A. Local storage
- B. Virtual Volumes
- C. Virtual SAN
- D. Datastores

Correct Answer: B

Section: (none)

Explanation

Explanation/Reference:

QUESTION 132

Which two statements about virtual switches in vSphere 6.x virtual networking are true? (Choose two.)

- A. Monitors metadata about communications that occur in a network.
- B. Creates isolated networks for testing and development.
- C. Attaches virtual machines to the physical network.
- D. Performs load balancing.

Correct Answer: CD

Section: (none)

Explanation

Explanation/Reference:



QUESTION 133

VMware vSphere 6.x provides which three capabilities? (Choose three.)

- A. Data center extension
- B. Manage virtual machines with simple and intuitive tools
- C. Perform live workload migrations
- D. Zero data center down time
- E. Predictive analytics

Correct Answer: BCE

Section: (none)

Explanation

Explanation/Reference:

QUESTION 134

Which feature of vSphere 6.x enables organizations to move virtual machines across data centers?

- A. Long Distance vMotion
- B. Content Library
- C. Auto Deploy
- D. Replication

Correct Answer: A

Section: (none)

Explanation

Explanation/Reference:

QUESTION 135

Which three VLAN Tagging modes are available in vSphere 6.x? (Choose three.)

- A. External Switch Tagging
- B. Private VLAN Tagging
- C. Virtual Switch Tagging
- D. VXLAN Tagging
- E. Virtual Guest Tagging



Correct Answer: ACE

Section: (none)

Explanation

Explanation/Reference:

QUESTION 136

An administrator wants to add a web server to an existing multi-tier application consisting of three virtual machines:

- A web server
- A database server
- An application server

The web server should be added to the application when the primary web server reaches:

- 70% vCPU utilization
- 55% active memory

Which option will achieve this result?

- A. Create a virtual machine alarm with an action to run a script that starts a new instance of the web server.
- B. Create a host cpu and memory alarm with an action to run a script that starts a new instance of the web server.
- C. Configure HA application monitoring for the web server and set it to trigger deployment of a new instance of the web server.
- D. Configure Fault Tolerance on the virtual machine and leave the secondary machine disabled until needed.

Correct Answer: A

Section: (none)

Explanation

Explanation/Reference:

QUESTION 137

Refer to the Exhibit. An administrator has configured a host profile so that ESXi 6.x hosts will point to the corporate NTP server for time synchronization. The NTP server is located at 10.0.30.213, but time has not been synchronized properly across the ESXi hosts.



Host1 - Edit Host Profile

✓ 1 Name and Description
 ✓ **2 Edit Host Profile**
 ✓ 3 Ready to complete

☒ Advanced Configuration Settings
☒ CIM Indication Subscriptions
☒ General System Settings

- ☒ Console Configuration
- ☒ Core Dump Configuration
- ☒ Date and Time Configuration
 - ☒ **Date and time configuration**
 - ☒ Device Alias Configuration
 - ☐ Host Cache Configuration
 - ☒ Kernel Module Configuration
 - ☒ Management Agent Configur
 - ☒ System Resource Pool Conf
 - ☒ System Swap Configuration
 - ☒ vFlash Host Swap Cache Co
- ☒ Networking configuration
- ☐ Security and Services
- ☒ Storage configuration

Date and time configuration

Time settings:

List of time servers, specified as either IP addresses or fully qualified domain names (FQDNs):

Time zone:

Back Next Finish Cancel

The administrator reviews Host Profile settings as shown in the Exhibit.

Which two steps are required to resolve the issue? (Choose two.)

- A. Correct the NTP server IP address.
- B. Check the host for host profile compliance.
- C. Remediate the host based on the updated host profile.
- D. Change the NTP server to the FQDN as IP Addresses are not supported.

Correct Answer: AC

Section: (none)

Explanation

Explanation/Reference:

QUESTION 138

Which two Virtual SAN related actions might start resynchronization of virtual machine objects?
(Choose two.)

- A. Editing a virtual machine storage policy to increase the number of replicas.
- B. Editing a virtual machine storage policy to reduce the number of replicas.
- C. Editing a virtual machine storage policy to increase the number of disk stripes.
- D. Editing a virtual machine storage policy to reduce the number of disk stripes.

Correct Answer: AC

Section: (none)

Explanation

Explanation/Reference:

Reference: <https://docs.vmware.com/en/VMware-vSphere/6.0/com.vmware.vsphere.virtualsan.doc/GUID-04ED9C07-BC61-4E3C-9188-9D2E460C9CA3.html>

QUESTION 139

An administrator has just completed installing an ESXi 6.x host, but doesn't know what address has been configured.

Where is the ESXi host IP address configured?

- A. RVC console
- B. Direct Console User Interface
- C. vSphere Web Client
- D. vSphere Client

Correct Answer: B

Section: (none)

Explanation

Explanation/Reference:

QUESTION 140

An ESXi 6.x host consists of 24 logical cores. Hyperthreading is enabled on the host.

What is the maximum number of vCPUs that can be assigned to a virtual machine on this host?

- A. 24
- B. 48
- C. 64
- D. 128

Correct Answer: A

Section: (none)

Explanation

Explanation/Reference:

Reference: <http://wahlnetwork.com/2013/09/30/hyper-threading-gotcha-virtual-machine-vcpusizing/>

QUESTION 141

A High Availability (HA) cluster is configured to respond to a given number of host failures.

The cluster contains virtual machines configured with these settings:

- VM1 has a 1GHz CPU reservation and no Memory reservation
- VM2 has a 2GHz CPU reservation and no Memory reservation - VM3 has no CPU reservation and no Memory reservation

Given this information, what is the correct slot size for the cluster?

- A. The CPU Reservation should be set to 32MHz and the memory reservation should be set to 32MB plus memory overhead.
- B. The CPU reservation should be set to 1 GHz and the memory reservation should be set to 0MB plus memory overhead.
- C. The CPU reservation should be set to 2 GHz, and the memory reservation should be set to 0MB plus the virtual machine memory overhead.
- D. The CPU reservation should be set to 2 GHz, and the memory reservation should be set to 32MB, plus the virtual machine memory overhead.

Correct Answer: C

Section: (none)

Explanation

Explanation/Reference:

QUESTION 142

Which three features can be enabled for a new host cluster? (Choose three.)

- A. Storage Distributed Resource Scheduling
- B. High Availability
- C. Fault Tolerance
- D. Distributed Resource Scheduling
- E. Virtual SAN

Correct Answer: BDE

Section: (none)

Explanation

Explanation/Reference:



QUESTION 143

As part of a multisite Single Sign-On (SSO) deployment what two steps are required to ensure that a change to one Single Sign-On instance is propagated to the other instances? (Choose two.)

- A. Schedule a Replication Task on the primary instance
- B. Select the first instance during the installation of subsequent instances
- C. During the installation of each instance choose Linked-Mode
- D. Enable Synchronize to Active Directory on each instance

Correct Answer: AC

Section: (none)

Explanation

Explanation/Reference:

QUESTION 144

An administrator attempts to install vCenter Single Sign-On Server. The installer returns an error message indicating that the installation failed. Prior to the installation, all setup prerequisites were met. The administrator has generated a vCenter Server Single Sign-On support bundle.

Which two files should the administrator analyze to determine the cause of the failure? (Choose two.)

- A. Server\utils\logs\imsTrace.log
- B. Server\utils\logs\install.txt
- C. %TEMP%\utils\logs\vminst.log
- D. %TEMP%\vminst.log

Correct Answer: AD

Section: (none)

Explanation

Explanation/Reference:

Explanation:

http://kb.vmware.com/selfservice/microsites/search.do?language=en_US&cmd=displayKC&externalId=2033880

https://www.vmware.com/support/ws5/doc/intro_techsup_ws.html

QUESTION 145

Which three steps must be taken to use vSphere Update Manager 6.x to upgrade an ESXi 5.5 host to vSphere 6.x? (Choose three.)

- A. Download an ESXi Image.
- B. Configure the vSphere Update Manager Download Service.
- C. Create a baseline and attach it to the ESXi Host.
- D. Scan the vCenter Content Library for the ESXi Image.
- E. Remediate the ESXi Host.

Correct Answer: ACE

Section: (none)

Explanation

Explanation/Reference:

QUESTION 146

Which vSphere 6 Standard Edition feature will allow an organization to ensure that critical multi-threaded applications have the maximum possible uptime?



<https://vceplus.com/>

- A. Fault Tolerance
- B. High Availability
- C. Distributed Resource Scheduler
- D. App HA

Correct Answer: A

Section: (none)

Explanation

Explanation/Reference:



QUESTION 147

An administrator must determine an appropriate backup solution, given these conditions:

- 50 of the virtual machines are in a resource pool named Finance.
- 50 of the virtual machines are in a resource pool named QA.

Which solution allows an administrator the ability to backup 100 virtual machines?

- A. Use Snapshot Manager on the vCenter Server to backup the virtual machines.
- B. Use the VMware Consolidated Backup (vcb) tool on the ESXi Host to backup the virtual machines.
- C. Use the VMware Data Recovery (VDR) Appliance on the vCenter Server to backup the virtual machines.
- D. Use the VMware Data Protection (VDP) Appliance on one of the ESXi Hosts to backup the virtual machines.

Correct Answer: D

Section: (none)

Explanation

Explanation/Reference:

QUESTION 148

During a new vSphere Distributed Switch configuration, where does the Maximum Transmission Unit (MTU) value get modified?

- A. Uplink Settings
- B. Switch Settings
- C. Portgroup Settings
- D. NIC Teaming Settings

Correct Answer: B

Section: (none)

Explanation

Explanation/Reference:

Reference: <https://kb.vmware.com/s/article/1010557>

QUESTION 149

An administrator needs to monitor traffic on vSwitches in a vSphere 6.x environment.

Which option, if configured, would accomplish this task?

- A. Forged Transmits
- B. MAC Address Changes
- C. Promiscuous Mode
- D. Notify Switches

Correct Answer: C

Section: (none)

Explanation

Explanation/Reference:

Reference: <https://kb.vmware.com/s/article/1002934>

QUESTION 150

When attempting to access a virtual machine, an administrator is unable to login using the vSphere credentials.

What two options are probable causes of the authentication failure? (Choose two.)

- A. The vSphere credentials have not been granted permissions.

- B. The vSphere credentials are granted read-only permissions.
- C. The vSphere credentials are granted no-access permissions.
- D. The vSphere credentials are not a member of the local administrator group.

Correct Answer: AB

Section: (none)

Explanation

Explanation/Reference:

QUESTION 151

An administrator is planning a vSphere infrastructure with the following specific networking requirements:

- The ability to shape inbound (RX) traffic
- Support for Private VLANs (PVLANS)
- Support for LLDP (Link Layer Discovery Protocol)

What is the minimum vSphere Edition that will support these requirements?

- A. vSphere Essentials Plus
- B. vSphere Standard
- C. vSphere Enterprise
- D. vSphere Enterprise Plus

Correct Answer: D

Section: (none)

Explanation

Explanation/Reference:

Explanation:

<http://www.vmware.com/products/vsphere/compare> <http://www.vmware.com/products/vsphere/features/distributed-switch.html>

QUESTION 152

When modifying a vApp, which two vSphere entities can be added? (Choose two.)

- A. A resource pool

- B. A network pool
- C. A vApp
- D. A folder

Correct Answer: AB

Section: (none)

Explanation

Explanation/Reference:

Reference: https://docs.vmware.com/en/VMware-vSphere/6.5/com.vmware.vsphere.vm_admin.doc/GUID-E05E8AF9-C8F2-4482-B3F0-733C85C6DD97.html

QUESTION 153

An administrator attempts to migrate a suspended virtual machine to a newly deployed vSphere 6.x cluster. The compatibility check fails.

What condition could cause this behavior?

- A. The new vSphere 6.x cluster is running Intel CPUs instead of AMD CPUs.
- B. A suspended virtual machine cannot be migrated.
- C. The hardware virtualization feature of the CPU is not enabled on the new hosts.
- D. A vSphere Distributed Switch is required to migrate a suspended virtual machine.

Correct Answer: A

Section: (none)

Explanation

Explanation/Reference:

Reference: <https://kb.vmware.com/s/article/1005764>

QUESTION 154

An administrator is performing an interactive installation of ESXi 6.x.

Which three options are available for installation? (Choose three.)

- A. DVD
- B. USB
- C. PXE
- D. Scripted
- E. Auto Deploy

Correct Answer: ABC

Section: (none)

Explanation

Explanation/Reference:

QUESTION 155

What two IT infrastructure components are virtualized by vSphere Essentials? (Choose two.)

- A. Networks
- B. Applications
- C. Storage
- D. Management

Correct Answer: AC

Section: (none)

Explanation

Explanation/Reference:



QUESTION 156

You are editing the management network configuration of an ESXi 6.x Host from the vSphere Web Client. You mistakenly put the incorrect VLAN in place for the management network.

What action do you need to take to correct this?

- A. You need to manually edit the configuration on the host with command line utilities.
- B. No action is required. By default, ESXi rolls back configuration changes that disconnect the host.
- C. The ESXi host system configuration will need to be restored to the factory configuration to fix the issue.
- D. The change can be reverted in the vSphere Web Client by simply editing the switch again.

Correct Answer: B

Section: (none)

Explanation

Explanation/Reference:

Explanation:

By rolling configuration changes back, vSphere protects hosts from losing connection to vCenter Server as a result from misconfiguration of the management network. In this case, configuring the wrong VLAN on the management network would result in a lost connection to the server.

Reference: <https://docs.vmware.com/en/VMware-vSphere/6.5/com.vmware.vsphere.networking.doc/GUID-8BA411A4-8582-4C02-8489-D3D7D09A9BF0.html>

QUESTION 157

An administrator has just configured the IP address on an ESXi host from the Direct Console User Interface. How can the configuration be validated as correct without any additional tools?

- A. Add the host to vCenter Server and if it works, then all networking settings are ok.
- B. Select the Test Management Network option from the DCUI.
- C. Connect to the host with the vSphere Client and click the Test Network option.
- D. Use PowerCLI to connect to the host and initiate a network test.

Correct Answer: B

Section: (none)

Explanation

Explanation/Reference:

QUESTION 158

An organization has an ESXi 6.x host that contains two resource pools.

The host is being relocated to a DRS cluster.

What two actions can be taken to integrate the host into the cluster, and what would happen to the existing ESXi resource pool hierarchy as a result? (Choose two.)

- A. Place all of the host's virtual machines into the DRS cluster root resource pool. The resource pools present on the host will be deleted.
- B. Create a resource pool for the ESXi host's virtual machines and resource pools. The resource pools present on the host will be deleted.
- C. Place all of the host's virtual machines into the DRS cluster root resource pool. The resource pools present on the host will be preserved.
- D. Create a resource pool for the ESXi host's virtual machines and resource pools. The resource pools present on the host will be preserved.

Correct Answer: AD

Section: (none)

Explanation

Explanation/Reference:

Reference: <https://pubs.vmware.com/vsphere-51/index.jsp?topic=%2Fcom.vmware.vsphere.vcenterhost.doc%2FGUID-0BCBA61B-8DCE-4069-B00395E7F9353B16.html>

QUESTION 159

An administrator has configured an alarm to be notified when a virtual machine meets either of these conditions:

High virtual CPU

High active memory consumption.

The alarm is only triggering when both of the conditions are met.

What can be done to correct the alarm behavior?

- A. Edit the alarm and select Trigger if ANY of the following conditions are satisfied.
- B. Edit the alarm and select Trigger if ALL of the following conditions are satisfied.
- C. Create two separate alarms, one for CPU and one for memory and link them together with ESXCLI.
- D. Delete the existing alarm and create a new event based alarm.

Correct Answer: A

Section: (none)

Explanation

Explanation/Reference:

**QUESTION 160**

What may be a cause for failure to unmount an NFS datastore?

- A. It has active snapshot files.
- B. It is being used for High Availability (HA) heartbeat.
- C. It is part of a Cluster.
- D. It is managed by Distributed Resource Scheduler (DRS).

Correct Answer: A

Section: (none)

Explanation

Explanation/Reference:

QUESTION 161

Which two statements are true about deploying and using vSphere Replication? (Choose two.)

- A. ESXi hosts managed by a single vCenter Server instance require a connection between the two vSphere Replication appliances.

- B. Sites managed by different vCenter Server instances require a connection between the two vSphere Replication appliances.
- C. Sites managed by different vCenter Server instances require the use of Site Recovery Manager and a connection between the two vSphere Replication appliances.
- D. ESXi hosts managed by a single vCenter Server instance require a single vSphere Replication appliance.

Correct Answer: BD

Section: (none)

Explanation

Explanation/Reference:

QUESTION 162

An attempt to enable vSphere Fault Tolerance for a powered-on virtual machine fails.

Which two scenarios would result in this failure? (Choose two.)

- A. The virtual machine has three vCPUs configured.
- B. The host on which the virtual machine is running has insufficient memory resources.
- C. The virtual machine has insufficient resources to accommodate full reservation plus the overhead memory.
- D. VMware High Availability is enabled on the cluster of which this host is a member.

Correct Answer: BC

Section: (none)

Explanation

Explanation/Reference:

Reference: <https://docs.vmware.com/en/VMware-vSphere/6.0/com.vmware.vsphere.avail.doc/GUID-83FE5A45-8260-436B-A603-B8CBD2A1A611.html>

QUESTION 163

A Fault Tolerance (FT) virtual machine with four vCPUs is experiencing high latency when performing ICMP and Application tests.

What are three potential causes that may be attributing to this latency? (Choose three.)

- A. The FT network has insufficient bandwidth and is running on a 1GB Link.
- B. The FT network is on a particularly high latency link.
- C. The FT network has been configured with Network I/O Control.
- D. The FT virtual machine is running an e1000 network adapter.
- E. The FT virtual machine is running on poor performing network-based storage.

Correct Answer: ABC

Section: (none)

Explanation

Explanation/Reference:

Reference: <https://docs.vmware.com/en/VMware-vSphere/6.5/com.vmware.vsphere.troubleshooting.doc/GUID-6F893381-BD0B-4825-B4CD-414854A9D9D9.html>

QUESTION 164

VMware tools is failing to install on a Microsoft Windows virtual machine.

What are two possible situations that would prevent the installation? (Choose two.)

- A. The VMware tools installation media is corrupt.
- B. The incorrect Operating System was selected in the virtual machine options.
- C. The software prerequisites have not been installed.
- D. The prerequisite services have not been started.

Correct Answer: AB

Section: (none)

Explanation

Explanation/Reference:



QUESTION 165

What is true regarding datastores on ESXi 6.x?

- A. NFS 4.1 datastore does not support Fault Tolerance (FT)
- B. VMFS3 and VMFS5 datastores can be newly created
- C. NFS datastore can be concurrently mounted using NFS 4.1 on one host and NFS on another
- D. NFS 3.0 datastore does not support Fault Tolerance (FT)

Correct Answer: B

Section: (none)

Explanation

Explanation/Reference:

QUESTION 166

An administrator is performing a scripted installation of ESXi 6.x.

In which three locations does the script need to be? (Choose three.)

- A. PXE Server
- B. HTTPS
- C. FTP
- D. NFS
- E. VVOLs Datastore

Correct Answer: BCD

Section: (none)

Explanation

Explanation/Reference:

QUESTION 167

Which three features are not supported when using Fault Tolerance in vSphere 6.x? (Choose three.)

- A. Virtual Volumes (VVOLS)
- B. Storage vMotion
- C. Virtual Machine Component Protection
- D. vMotion
- E. vSphere Distributed Switches

Correct Answer: ABC

Section: (none)

Explanation

Explanation/Reference:

QUESTION 168

Refer to the Exhibit. An administrator is configuring an ESXi 6.x host to use multiple NICs to resolve a management network redundancy error. After configuring a second NIC, the server is not able to communicate when the primary connection is taken down.

The administrator analyzes the Exhibit shown here.

Physical adapters

Device	Actual Speed	Configured Speed	Switch	MAC Address	Observed IP ranges	Wake on LAN
Intel Corporation 82545EM Gigabit Ethernet Controller (Copper)						
vmnic0	1000 Mb	Auto negotiate	vSwitch0	00:50:56:03:0a:51	10.0.0.8-10.0.0.11	No
vmnic1	1000 Mb	Auto negotiate	vSwitch0	00:50:56:03:3b:61	10.0.0.8-10.0.0.11	No
vmnic2	Down	Auto negotiate	vSwitch1	00:50:56:03:44:ed	10.0.0.8-10.0.0.11	No
vmnic3	1000 Mb	Auto negotiate	vSwitch1	00:50:56:03:0e:0f	10.0.0.8-10.0.0.11	No
vmnic4	1000 Mb	Auto negotiate	—	00:50:56:03:17:a3	10.0.0.8-10.0.0.11	No

Physical network adapter: vmnic0

All Properties CDP LLDP	
Adapter	Intel Corporation 82545EM Gigabit Ethernet Controller (Copper)
Name	vmnic0
Location	PCI 0000:02:00.0
Driver	e1000
Status	

Based on the exhibit, what is the likely cause of the issue?

- A. vmnic4 is not attached to a vSwitch.
- B. vmnic2 is not connected to a physical switch.
- C. E1000 is the incorrect NIC Driver for this card.
- D. There is a MAC address conflict on the network.

Correct Answer: B

Section: (none)

Explanation

Explanation/Reference:

QUESTION 169

A vApp template recently added to a Content Library is not displayed.

Which two actions could correct this problem? (Choose two.)

- A. Manually synchronize the library
- B. Select the Download all library content immediately option
- C. Select the Sync subscribed library option
- D. Manually download the vApp template

Correct Answer: AB

Section: (none)

Explanation

Explanation/Reference:

QUESTION 170

Which three are requirements when using vMotion to move a virtual machine across vCenter Server systems? (Choose three.)

- A. Both vCenter Servers must be using Enhanced Linked Mode.
- B. Both vCenter Servers must be in the same Single Sign-On Domain.



<https://vceplus.com/>

- C. Time must be synchronized.
- D. Duplicate VM MAC addresses must be configured.
- E. Both vCenter Servers must have High Availability enabled on source and destination clusters.

Correct Answer: ABC

Section: (none)

Explanation

Explanation/Reference:

Reference: <https://kb.vmware.com/s/article/2106952>

QUESTION 171

What is required when changing a virtual machine name using the vSphere Web Client?

- A. Verify connectivity to the ESXi host where the virtual machine is running and its inventory list is accessible.
- B. Verify in which datastore the virtual machine resides and that you have access and its inventory list is accessible.
- C. Verify that virtual machine files are stored in the same datastore and can be accessed in the datastore browser list.
- D. Verify the virtual machine is not running in Fault Tolerant mode and that it is not in a Distributed Resource Scheduler cluster.

Correct Answer: A

Section: (none)

Explanation

Explanation/Reference:

QUESTION 172

What are three goals of resource management within a cluster? (Choose three.)

- A. To prevent virtual machines from monopolizing resources and to guarantee predictable service rates.
- B. To exploit undercommitted resources and overcommit with graceful degradation.
- C. To provide solutions to potential problems that you might encounter when using vCenter Server.
- D. To control the relative importance of virtual machines and provide flexible dynamic partitioning.
- E. To provide additional network administration capabilities.

Correct Answer: ABD

Section: (none)

Explanation

Explanation/Reference:

QUESTION 173

vMotion can be performed between which three physical boundaries? (Choose three.)

- A. Between two vCenter Server Systems
- B. Between two vSphere Distributed Virtual Switches

- C. Between two vCenter Server Datacenter objects
- D. Between two VMware NSX Layer 4 segments
- E. Between two NFS datastores

Correct Answer: ABC

Section: (none)

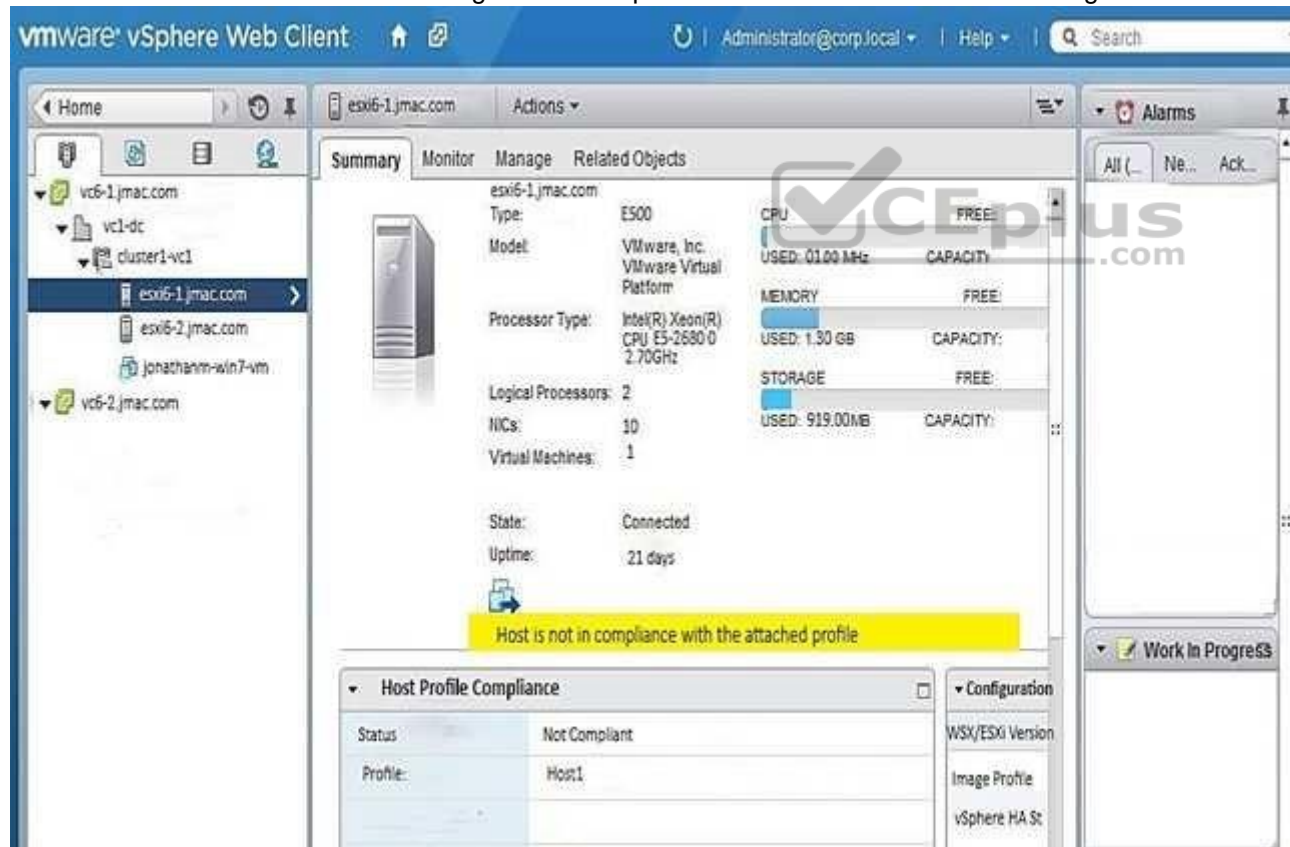
Explanation

Explanation/Reference:

Reference: <https://vinfrastructure.it/2015/02/vmware-vsphere-6-vmotion-everywhere/>

QUESTION 174

Refer to the Exhibit. An administrator logs into the vSphere Web Client and sees the warning shown in the Exhibit.



During a change control window, the warning was addressed.
What should be done to verify that the host is no longer showing the warning?

- A. Run a Remediate host operation.
- B. Recheck the compliance of the host.
- C. Restart the host to get rid of the warning.
- D. Install VMware tools to clear the warning.

Correct Answer: B

Section: (none)

Explanation

Explanation/Reference:

QUESTION 175

Which two statements are true regarding VMware vSphere Flash Read Cache (vFRC)? (Choose two.)

- A. Cache fills and cache evictions happen in the granularity of a cache block size.
- B. vFRC caches data from both read and write I/Os, but write I/Os are always serviced by the underlying storage.
- C. vFRC caches data from both read and write I/Os, but write I/Os are always serviced by the underlying cache data.
- D. Cache fills and cache evictions happen in the granularity of the disk block size.

Correct Answer: AB

Section: (none)

Explanation

Explanation/Reference:

Reference: <http://www.yellow-bricks.com/2013/09/11/frequently-asked-questions-vsphere-flash-read-cache/>

QUESTION 176

An administrator is unable to login to vCenter Server when using the vSphere web client.

The administrator successfully accessed vCenter Server using the client earlier the same day.

What is the most appropriate first step the administrator should take to resolve this issue?

- A. Verify the web browser being used has Adobe Flash plugin version 11.5 or later
- B. Verify the vCenter Single Sign-On service is running on the vCenter Server

- C. Verify the vSphere Web Server service is running on the vCenter Server
- D. Verify the administrator has permissions configured in vCenter Server

Correct Answer: B

Section: (none)

Explanation

Explanation/Reference:

QUESTION 177

An organization has configured Distributed Power Management (DPM) on a vSphere 6 cluster. The organization wants to be alerted when an ESXi host has been powered down by DPM.

Which two options represent the type and name of the alarm that would accomplish this? (Choose two.)

- A. DrsEnteringStandbyModeEvent
- B. DrsEnteredStandbyModeEvent
- C. Event-based
- D. Condition-based



Correct Answer: BC

Section: (none)

Explanation

Explanation/Reference:

Reference: <https://docs.vmware.com/en/VMware-vSphere/6.5/com.vmware.vsphere.resmgmt.doc/GUID-DE5EF6EA-97F0-43E9-8BD5-2A45A64445BC.html>

QUESTION 178

A physical Windows 2008 R2 Server is converted to a virtual machine using VMware vCenter Converter. Upon completion of the conversion and subsequent power on operation, the virtual machine fails to boot and the message below is observed in the Console of the virtual machine:

```
STOP 0x0000007B INACCESSIBLE_BOOT_DEVICE
```

Which two potential issues may be causing this boot failure? (Choose two.)

- A. An incorrect SCSI controller was selected during conversion.
- B. Incompatible software drivers were migrated into the virtual machine from the source machine.
- C. The vmdk file backing the virtual machine was thick provisioned.

D. A snapshot was taken immediately after the conversion completed.

Correct Answer: AB

Section: (none)

Explanation

Explanation/Reference:

Reference: <https://kb.vmware.com/s/article/1013975>

QUESTION 179

A user is trying to retrieve objects from a SharePoint server and finds the request is taking an excessive amount of time. An administrator tries to isolate the issue and notes the following:

- Application performance is poor when compared to virtual machines on other hosts.
- Performance improves when the virtual machine is moved to another host.

The virtual machine encounters higher than expected CPU %Ready times.

What conclusion can be reached regarding the performance issues for this virtual machine?

- A. Host Power Management is directly impacting virtual machine performance.
- B. The virtual machine has a large number of snapshots.
- C. The Path Selection Policy for the storage device is set differently on the affected host.
- D. Network I/O control is configured for the portgroup.

Correct Answer: A

Section: (none)

Explanation

Explanation/Reference:

Reference: <https://kb.vmware.com/s/article/1018206>

QUESTION 180

Which three are architecture components of vRealize Operations? (Choose three.)

- A. Identity Server
- B. Administrative Server
- C. Analytics Server
- D. Database Server
- E. Connection Broker

Correct Answer: BCD

Section: (none)

Explanation

Explanation/Reference:

QUESTION 181

Which load balancing policy, previously limited to vSphere Distributed Switches, is now available on vSphere Standard Switches with vSphere 6.x?

- A. Route based on physical NIC workload
- B. Route based on IP Hash
- C. Route based on the originating virtual port
- D. Route based on Source MAC Hash

Correct Answer: A

Section: (none)

Explanation

Explanation/Reference:

Compare both standard and distributed switch in the 5.1 version documentation (first link) to the 6.0 version documentation (second link) below:

<https://pubs.vmware.com/vsphere-51/index.jsp?topic=%2Fcom.vmware.vsphere.networking.doc%2FGUID-D5EA6315-5DCD-463E-A701-B3D8D9250FB5.html>

<https://docs.vmware.com/en/VMware-vSphere/6.0/com.vmware.vsphere.networking.doc/GUID-D34B1ADD-B8A7-43CD-AA7E-2832A0F7EE76.html>

QUESTION 182

An administrator is attempting to enable Storage I/O Control on a datastore, but it is failing.

What is the likely reason for this failure?

- A. The host is connected to a datastore is running on ESX 4.0.
- B. The host is connected to a Fibre Channel storage array.
- C. The datastore has multiple extents.
- D. The datastore is managed by a single vCenter Server.

Correct Answer: C

Section: (none)

Explanation

Explanation/Reference:

Reference: <https://kb.vmware.com/s/article/1022091>

QUESTION 183

An administrator is unable to create the first group in a new vRealize Operations environment.

What is the likely cause of the problem?

- A. There are no group types defined.
- B. The group is not defined in SSO.
- C. There are more than 32 group types defined.
- D. The description for the group is not provided.

Correct Answer: A

Section: (none)

Explanation

Explanation/Reference:

Reference: <https://www.vmware.com/support/vrops/doc/vrops-601-release-notes.html>

QUESTION 184

Which two statements are true about LACP support with the vSphere Distributed Switch? (Choose two.)

- A. LACP works with MAC hash load balancing.
- B. LACP does not work with port mirroring.
- C. LACP works with software iSCSI multipathing.
- D. LACP does not work with host profiles.

Correct Answer: BD

Section: (none)

Explanation

Explanation/Reference:

Reference <https://docs.vmware.com/en/VMware-vSphere/6.5/com.vmware.vsphere.networking.doc/GUID-3FDE1E96-9217-4FE6-8B76-6E3A64766828.html>

QUESTION 185

What three types of widgets can be added to a vRealize Log Insight Custom Dashboard? (Choose three.)

- A. badge widget
- B. event trends widget
- C. query list widget

- D. heatmap widget
- E. chart widget

Correct Answer: BCE

Section: (none)

Explanation

Explanation/Reference:

Reference <https://docs.vmware.com/en/vRealize-Log-Insight/4.3/com.vmware.log-insight.user.doc/GUID-ACF41E9A-4DC4-4071-AE45-FA296525D64C.html>

QUESTION 186

Which of the following options are configurable in a Resource Pool? (Choose two.)

- A. CPU affinity
- B. CPU Shares
- C. Startup/Shutdown order
- D. Memory Limit

Correct Answer: BD

Section: (none)

Explanation



Explanation/Reference:

QUESTION 187

What are the two minimum configurations of a disk group in a vSAN host? (Choose two.)

- A. 1 SSD drive for the caching tier and 1 or more HDDs for the capacity tier



<https://vceplus.com/>

- B. 1 SSD drive for the caching tier and 1 or more SSDs for the capacity tier
- C. 2 or more SSD drives for the caching tier and 2 or more SSDs for the capacity tier
- D. 2 or more SSD drives for the caching tier and 2 or more HDDs for the capacity tier

Correct Answer: AB

Section: (none)

Explanation

Explanation/Reference:

<https://docs.vmware.com/en/VMware-vSphere/6.5/com.vmware.vsphere.virtualsan.doc/GUID-4B738A10-4506-4D70-8339-28D8C8331A15.html>

QUESTION 188

A vSphere Administrator has an unresponsive ESXi 6.x host and only has access to the Direct Console User Interface. Which option would allow the Administrator to review live VMkernel logging? (Choose the best answer.)

- A. Alt + F8
- B. Alt + F7
- C. Alt + F11
- D. Alt + F12

Correct Answer: D

Section: (none)

Explanation

Explanation/Reference:

Reference: <https://kb.vmware.com/s/article/2148363>

QUESTION 189

A vSphere Administrator observes that no devices are showing up under an iSCSI Storage Adapter. Which three are valid troubleshooting methods? (Choose three.)

- A. Log in to the ESXi Shell, run the vmkping target_ip command to verify that the VMkernel interface on the host can ping the iSCSI targets
- B. Use the nc -z target_ip 3260 command to verify that the ESXi host can reach the iSCSI TCP port (default 3260) on the storage array
- C. Verify that the MTU size is lower than 9,000 bytes
- D. Verify that the CHAP authentication settings are correct
- E. If Jumbo Frames are required, verify that packet fragmentation is allowed

Correct Answer: ABD



Section: (none)

Explanation

Explanation/Reference:

Reference: <https://kb.vmware.com/s/article/1003681>

QUESTION 190

What are two possible Startup Actions available to VMs within a vApp? (Choose two.)

- A. None
- B. Guest Shutdown
- C. Power OffD. Power On

Correct Answer: AD

Section: (none)

Explanation

Explanation/Reference:

Reference:

https://docs.vmware.com/en/VMware-vSphere/6.5/com.vmware.vsphere.vm_admin.doc/GUID-0FAB05D4-22F7-4665-B42A-0FA4B360B398.html

QUESTION 191

Which two statements are true using Resource Pools? (Choose two.)

- A. Resource Pools require vSphere HA to be enabled
- B. Resource Pools compartmentalize all resources in a datacenter
- C. Resource Pools require vSphere DRS to be enabled
- D. Resource Pools compartmentalize all resources in a cluster

Correct Answer: CD

Section: (none)

Explanation

Explanation/Reference:

Reference: <https://docs.vmware.com/en/VMware-vSphere/6.5/com.vmware.vsphere.resmgmt.doc/GUID-0F6C6709-A5DA-4D38-BE08-6CB1002DD13D.html>
<https://communities.vmware.com/thread/145338>

QUESTION 192

Which two types of network traffic can be used for vSphere High Availability (HA)? (Choose two.)

- A. VM Network traffic
- B. vMotion network traffic
- C. VMware vSAN network traffic
- D. Management network traffic

Correct Answer: CD

Section: (none)

Explanation

Explanation/Reference:

Reference:

<https://docs.vmware.com/en/VMware-vSphere/6.5/com.vmware.vsphere.virtualsan.doc/GUID-D68890D8-841A-4BD1-ACA1-DA3D25B6A37A.html>

QUESTION 193

Which two components are built into the vCenter Server Appliance 6.5? (Choose two.)

- A. vSphere Auto Deploy
- B. vRealize Orchestrator
- C. vCenter Converter
- D. VMware vSphere Update Manager



Correct Answer: AD

Section: (none)

Explanation

Explanation/Reference:

Reference: <https://docs.vmware.com/en/VMware-vSphere/6.5/com.vmware.vsphere.install.doc/GUID-78933728-7F02-43AF-ABD8-0BDCE10418A6.html>

QUESTION 194

An Administrator has been tasked with deploying a new vSphere 6.x environment spanning multiple geographical locations while preserving a single source of authentication?

Which vCenter Server topology does VMware recommend for this scenario?

- A. Multi-Site SSO with:
 - an embedded PSC and vCenter Server instance at the primary location
 - no PSC at remote locations, vCenter Server instances only
- B. Multi-Site SSO with:

An embedded PSC and vCenter Server instance at each location

- C. Multi-Site SSO with:
 - One or more external PSC and vCenter Server instances at each location
- D. Multi-Site with:
 - One or more external PSC at the primary location only
 - Embedded PSC and vCenter Server instances at remote locations

Correct Answer: C

Section: (none)

Explanation

Explanation/Reference:

Reference: <https://docs.vmware.com/en/VMware-vSphere/6.5/com.vmware.vsphere.install.doc/GUID-62CC201A-01ED-4116-8604-FF123481DAFC.html>

QUESTION 195

A junior vSphere Administrator takes a snapshot before logging into a VM to preserve the current state in case of a problem. Assuming this process is repeated every day for over 30 days, what two results will happen? (Choose two.)

- A. The virtual machine can end up consuming more space on the datastore than assigned
- B. The virtual machine's performance will decrease
- C. The administrator will have backups for the entire month
- D. The administrator has successfully cloned the VM 30 times

Correct Answer: AB

Section: (none)

Explanation

Explanation/Reference:

Reference: <https://kb.vmware.com/s/article/1025279>

QUESTION 196

When specifying a trigger action for an Alarm Definition, what two alarm state changes are available to be triggered on? (Choose two.)

- A. from normal to warning
- B. from normal to critical
- C. from critical to normal
- D. from critical to warning

Correct Answer: AD

Section: (none)

Explanation

Explanation/Reference:

Reference: <https://www.youtube.com/watch?v=8vWNVBDPcu4>

QUESTION 197

A vSphere Administrator must purge orphaned data in a vCenter Server database.
Which option will let the Administrator accomplish this task?

- A. Locate the `cleanup_orphaned_data_PostgreSQL.sql` script in the vCSA ISO image, copy it to the vCSA filesystem and use the `psql` utility to run it
- B. Use the vCenter Server Appliance Migration Tool
- C. Enter the following command in the vCSA Shell: `/opt/vmware/vpostgres/9.4/bin/psql -U postgres -d VCDB -c 'dropdb VCDB'`
- D. Run the `less postgresql.conf | grep autovacuum` command from the `/storage/db/vpostgres/` directory in the vCSA Shell

Correct Answer: A

Section: (none)

Explanation

Explanation/Reference:

Reference: <https://docs.vmware.com/en/VMware-vSphere/6.5/com.vmware.vsphere.upgrade.doc/GUID-7B1306D9-0B0D-4E01-8B9D-31B94F0ABC60.html>

QUESTION 198

Which two locations are supported for an ESXi installation script to reside on? (Choose two.)

- A. SCP Server
- B. FTP Server
- C. CIFS Server
- D. NFS Server

Correct Answer: BD

Section: (none)

Explanation

Explanation/Reference:

Reference: <https://docs.vmware.com/en/VMware-vSphere/6.5/com.vmware.vsphere.install.doc/GUID-00224A32-C5C5-4713-969A-C50FF4DED8F8.html>

QUESTION 199

What field or option is required when creating a VM snapshot? (Choose the best answer.)

- A. Snapshot description
- B. Quiesce guest file system
- C. Snapshot the virtual machine's memory
- D. Snapshot name

Correct Answer: D

Section: (none)

Explanation

Explanation/Reference:

Reference: <https://kb.vmware.com/s/article/2032907>

QUESTION 200

In the vSphere environment there is a mix of ESXi hosts with versions 5.5, 6.0, and 6.5 in one DRS cluster. What is the highest virtual machine compatibility that can be used on all the hosts?

- A. vmx-10 B. vmx-9
- C. vmx-11
- D. vmx-13



Correct Answer: A

Section: (none)

Explanation

Explanation/Reference:

Reference: <https://kb.vmware.com/s/article/1003746>

QUESTION 201

When viewing the Advanced Performance Charts in the vSphere Web Client, what two options determine the amount of historical data available in the chart? (Choose two.)

- A. Inventory object
- B. Statistical level
- C. Number of metric groups
- D. Collection interval

Correct Answer: BD

Section: (none)

Explanation

Explanation/Reference:

Reference: <https://pubs.vmware.com/vsphere-51/index.jsp?topic=%2Fcom.vmware.vsphere.monitoring.doc%2FGUID-C1290068-BEE7-44FE-908799A4447DB1EA.html>

QUESTION 202

The error message below displays in the Summary tab for a host, even though there are two available uplinks for the vSwitch hosting the VMkernel Port Management Network, providing redundancy:

Host <xxx> currently has no management network redundancy

Which three methods can be used after confirming the correct network configuration? (Choose three.)

- A. Set the vSphere HA advanced option das.ignoreRedundantNetWarning to true and reconfigure VMware HA on that host.
- B. Disable and then re-enable HA.
- C. Restart the management agents from the DCUI.
- D. Add a third vmnic to the management network on a vSwitch configured with NIC teaming.
- E. Right-click the host and click Reconfigure HA.

Correct Answer: ABE

Section: (none)

Explanation

Explanation/Reference:

Reference: <https://kb.vmware.com/s/article/1004700>

QUESTION 203

By using vSphere Standard Switch, what is the maximum number of port groups allowed per host?

- A. 1000
- B. 2000
- C. 1024
- D. 900
- E. 512

Correct Answer: E

Section: (none)

Explanation

Explanation/Reference:

Reference: <https://www.vmware.com/pdf/vsphere6/r65/vsphere-65-configuration-maximums.pdf>

QUESTION 204

A VMware vSphere Administrator is tasked with enabling Fault Tolerance (FT) on a VM but is unable to.

What is the reason that FT cannot be enabled?

- A. The VM has a VMDK that is greater than 2TB.
- B. The VM is configured to use Jumbo Frames.
- C. The VM has 4 vCPU.
- D. The VM is running an operating system that is more than 4 years old.

Correct Answer: C

Section: (none)

Explanation

Explanation/Reference:

Explanation:

Enabling fault tolerance on a virtual machine with more than 1 vCPU using the vSphere Client fails.

You see the error:

“The Virtual Machine has x virtual CPUs and is not supported for Fault Tolerance”

Reference: <https://kb.vmware.com/s/article/2130553>

QUESTION 205

What ESXi command line command can be used to troubleshoot basic network connectivity?

- A. vmkping
- B. vim-cmd
- C. vmware-lv
- D. chconfig

Correct Answer: A

Section: (none)

Explanation

Explanation/Reference:

Reference: <https://kb.vmware.com/s/article/2020669>



<https://vceplus.com/>

