

2V0-602.exam.190q

Number: 2V0-602
Passing Score: 800
Time Limit: 120 min



VCE to PDF Converter : <https://vceplus.com/vce-to-pdf/>

Facebook: <https://www.facebook.com/VCE.For.All.VN/>

Twitter : https://twitter.com/VCE_Plus

Google+ : <https://plus.google.com/+Vcepluscom>

LinkedIn : <https://www.linkedin.com/company/vceplus>

<https://vceplus.com/>

2V0-602

VMware vSphere 6.5 Foundations

Exam A

QUESTION 1

Which two options are requirements to perform a migration between vCenter Server instances? (Choose two.)



<https://vceplus.com/>

- A. The vCenter Server servers must be time-synchronized.
- B. The ESXi hosts must be version 5.5 or later.
- C. The vCenter Servers must be version 6.0 or later.
- D. The vCenter Server must be in the same single Sign-On domain.
- E. The ESXi hosts must have vSphere Standard, Advanced, or Enterprise Plus licensing.

Correct Answer: AC

Section: (none)

Explanation

Explanation/Reference:

Reference: <https://pubs.vmware.com/vsphere-60/index.jsp#com.vmware.vsphere.vcenterhost.doc/GUID-DAD0C40A-7F66-44CF-B6E8-43A0153ABE81.html>

QUESTION 2

An Administrator would like to take advantage of the new Automatic UNMAP feature in VMFS6. All of the existing datastores are connected via iSCSI and formatted with VMFS5.

In order to minimize disruption and maintain some of the existing VMFS5 volumes, which two steps can be taken to leverage the UNMAP feature in VMFS6? (Choose two.)

- A. Use Storage vMotion to migrate your workloads to the new VMFS6 datastore.
- B. Create a new VMFS6 datastore.
- C. Use Storage DRS to put the VMFS5 datastore into maintenance mode.
- D. Perform an inline upgrade on each of your VMFS5 volumes.

Correct Answer: AB

Section: (none)

Explanation

Explanation/Reference:

Reference: <https://kb.vmware.com/s/article/2147824>

QUESTION 3

A Long-Distance vMotion migration cannot complete.

Which three situations could cause this? (Choose three.)

- A. The license currently in use for the two hosts in vSphere Enterprise Edition.
- B. The round-trip time between the hosts is greater than 150 milliseconds.
- C. The virtual machine is configured to use Virtual NVMe disks.
- D. The vMotion traffic to the destination host is on the default TCP/IP stack.
- E. The license currently in use for the two hosts is vSphere Enterprise Plus Edition.

Correct Answer: ABD

Section: (none)

Explanation

Explanation/Reference:

Reference: <https://kb.vmware.com/s/article/2106949>



QUESTION 4

Which Distributed Switch Load Balancing option requires configuration of the physical Ethernet switch to operate properly?

- A. Route based on originating virtual port
- B. Use explicit failover
- C. Route based on IP hash
- D. Route based on physical NIC load
- E. Route based on source MAC hash

Correct Answer: C

Section: (none)

Explanation

Explanation/Reference:

Reference: Reference: <https://docs.vmware.com/en/VMware-vSphere/6.5/com.vmware.vsphere.networking.doc/GUID-73AB2E00-FE02-4D1B-970F7D2F21F52825.html>

QUESTION 5

Which two choices are valid ways to patch an ESXi host? (Choose two.)

- A. utilizing the esxcli Command Line Interface
- B. vSphere Update Manager
- C. vRealize Operations Manager
- D. configuring a Host Profile

Correct Answer: AB

Section: (none)

Explanation

Explanation/Reference:

Reference: <https://kb.vmware.com/s/article/2008939> <https://cliffcahill.com/2017/07/11/patching-esxi-hosts-with-update-manager-on-vsphere-6-5/>

QUESTION 6

Which three virtual hardware configurations will allow snapshots? (Choose three.)

- A. Physical Mode RDMs
- B. bus sharing
- C. Full memory reservation
- D. Virtual Mode RDMs
- E. 16+ vCPU

Correct Answer: CDE

Section: (none)

Explanation

Explanation/Reference:

Reference: https://docs.vmware.com/en/VMware-vSphere/6.5/com.vmware.vsphere.vm_admin.doc/GUID-53F65726-A23B-4CF0-A7D5-48E584B88613.html

QUESTION 7

What tool is utilized for detailed performance monitoring of the vCenter Server Appliance?

- A. vim-cmd

- B. esxtop
- C. Perfmon
- D. vintop

Correct Answer: D

Section: (none)

Explanation

Explanation/Reference:

Reference: <https://www.virtuallyghetto.com/2015/02/vimtop-esxtop-for-the-vcasa-6-0.html>

QUESTION 8

Which is the VDP appliance available storage configuration maximum?

- A. 2 TB
- B. 62 TB
- C. 8 TB
- D. 4 TB

Correct Answer: C

Section: (none)

Explanation

Explanation/Reference:

Reference: <https://blogs.vmware.com/vsphere/2012/08/setting-the-record-straight-on-vmware-vsphere-data-protection.html>

QUESTION 9

A vSphere Administrator has been tasked with ensuring that 500 virtual desktops are unable to communicate with one another, but can communicate with required services.

Which two solutions does VMware recommend? (Choose two.)

- A. VMware NSX Distributed Firewall
- B. Private VLAN
- C. vSphere Host Firewall
- D. Port Filtering

Correct Answer: AB

Section: (none)

Explanation

Explanation/Reference:

QUESTION 10

What is the maximum supported number of Virtual SCSI adapters per VM in vSphere 6.5?

- A. 8
- B. 4
- C. 2
- D. 6

Correct Answer: B

Section: (none)

Explanation

Explanation/Reference:

Reference: <https://www.vmware.com/pdf/vsphere6/r65/vsphere-65-configuration-maximums.pdf> (page 9)

QUESTION 11

A VMware vSphere 6.x Administrator is tasked with expanding a current vRealize Log Insight Deployment.

What two steps will accomplish this task? (Choose two.)

- A. Run the startup wizard and select Join Existing Deployment.



<https://vceplus.com/>

- B. Login to the vRealize Log Insight Management UI and select Add New Node.
- C. Deploy another vRealize Log Insight server from the OVF.
- D. Deploy and install vRealize Log Insight on a new Linux virtual machine.

Correct Answer: AB

Section: (none)

Explanation

Explanation/Reference:

QUESTION 12

Which two resource types can be limited on the vApp level? (Choose two.)

- A. CPU
- B. Storage
- C. Memory
- D. Network

Correct Answer: AC

Section: (none)

Explanation

Explanation/Reference:

Reference https://docs.vmware.com/en/VMware-vSphere/5.5/com.vmware.vsphere.vm_admin.doc/GUID-9902FD4C-4727-43F7-AEAF-901DA4CB4D60.html

QUESTION 13

Which file format supports the exchange of virtual appliances across products and platforms?

- A. FAT32
- B. OVF
- C. VMDK
- D. NTFS

Correct Answer: B

Section: (none)

Explanation

Explanation/Reference:

Reference: https://pubs.vmware.com/vsphere-65/index.jsp?topic=%2Fcom.vmware.vsphere.vm_admin.doc%2FGUID-AE61948B-C2EE-436E-BAFB3C7209088552.html

QUESTION 14

When trying to export the vApp to the OVF, the option is grayed out.

What solution allows for the export of a vApp?

- A. PowerOff the vApp.
- B. The vApp is marked as Non-Exportable.
- C. Logout of the vSphere Client and use the vSphere WebClient.
- D. Change the portgroup where the VMs are connected to.

Correct Answer: A

Section: (none)

Explanation

Explanation/Reference:

QUESTION 15

After reconfiguring VUM in the vCenter Server Appliance, a vSphere Administrator must restart the Update Manager service.

Which VMware recommended action will let the Administrator accomplish this task?

- A. On the vSphere Web Client Home page, click System Configuration, then Nodes. Select vCenter Server and, from the Actions menu, select Reboot.
- B. On the vSphere Web Client Home page, click System Configuration, then Services. Select VMware vSphere Update Manager service, and from the Actions menu select Restart.
- C. On the vSphere Web Client Home page, click Update Manager. Select the Update Manager server and use the Actions menu to restart it.
- D. Log in to the vCenter Server Appliance Management UI and reboot the VCSA.

Correct Answer: B

Section: (none)

Explanation

Explanation/Reference:

Reference: https://pubs.vmware.com/vsphere-65/index.jsp?topic=%2Fcom.vmware.vsphere.update_manager.doc%2FGUID-DCC3EABE-4973-48E5-8B7DE53598F0E12A.html

QUESTION 16

Which two options does VM Monitoring use to determine if a virtual machine should be reset? (Choose two.)

- A. Network activity from the virtual machine
- B. I/O activity from the virtual machine
- C. CPU activity from the virtual machine

D. Heartbeats from VMware Tools

Correct Answer: BD

Section: (none)

Explanation

Explanation/Reference:

Reference https://pubs.vmware.com/vsphere-50/index.jsp?topic=%2Fcom.vmware.vsphere.avail.doc_50%2FGUID-62B80D7A-C764-40CB-AE59752DA6AD78E7.html

QUESTION 17

Which option was added to the load balancing calculations of DRS in vSphere 6.5?

- A. Network
- B. Memory
- C. Storage
- D. CPU

Correct Answer: B

Section: (none)

Explanation

Explanation/Reference:

Explanation:

Memory Metric for Load Balancing: DRS uses Active memory + 25% as its primary metric when calculating memory load on a host. The Consumed memory vs active memory will cause DRS to use the consumed memory metric rather than Active. This is beneficial when memory is not over-allocated. As a side effect, the UI show the hosts be more balanced.

Reference: <https://blogs.vmware.com/vsphere/2016/10/whats-new-in-vsphere-6-5-host-resource-management-and-operations.html>

QUESTION 18

What are two requirements needed to enable a 4 vCPU virtual machine with Fault Tolerance? (Choose two.)

- A. vSphere Enterprise Plus license
- B. 10 GbE uplink for FT logging network
- C. vSphere Standard license
- D. 1 GbE uplink for FT logging network

Correct Answer: AB

Section: (none)

Explanation

Explanation/Reference:

Reference: <https://pubs.vmware.com/vsphere-60/index.jsp?topic=%2Fcom.vmware.vsphere.avail.doc%2FGUID-57929CF0-DA9B-407A-BF2E-E7B72708D825.html>

QUESTION 19

What are two requirements for Guest Operating System Customizations? (Choose two.)

- A. The ESXi host that the virtual machine is running on must be version 5.5 or later.
- B. Microsoft Sysprep tools must be installed on the Windows VM to be cloned.
- C. VMware Tools must be installed on the virtual machine or template.
- D. The guest operating system being customized must be installed on a disk attached as SCSI node 0:0 in the virtual machine configuration.

Correct Answer: CD

Section: (none)

Explanation

Explanation/Reference:

Reference: https://pubs.vmware.com/vsphere-50/index.jsp?topic=%2Fcom.vmware.vsphere.vm_admin.doc_50%2FGUID-E63B6FAA-8D35-428D-B40C744769845906.html

QUESTION 20

Which two databases are supported for the vCenter Server Appliance 6.x? (Choose two.)

- A. PostgreSQL
- B. Oracle
- C. DB2
- D. Microsoft SQL Server

Correct Answer: AB

Section: (none)

Explanation

Explanation/Reference:

Reference: <https://pubs.vmware.com/vsphere-60/index.jsp?topic=%2Fcom.vmware.vsphere.upgrade.doc%2FGUID-8E23C952-56B1-43CB-A1D3F3259FD73FA4.html>

QUESTION 21

Which three functions are provided by Storage DRS? (Choose three.)

- A. space load balancing among datastores within a datastore cluster
- B. VM disk sizing recommendations for virtual machines in datastores within a datastore cluster
- C. I/O load balancing among datastores within a datastore cluster
- D. snapshot consolidation recommendations among datastores within a datastore cluster
- E. initial placement recommendations for virtual disks based on space and I/O workload

Correct Answer: ACE

Section: (none)

Explanation

Explanation/Reference:

Reference: <https://pubs.vmware.com/vsphere-51/index.jsp?topic=%2Fcom.vmware.vsphere.resmgmt.doc%2FGUID-19B6F05F-D285-4ACB-9B1324A1DE9B4058.html>

QUESTION 22

A vSphere Administrator has been tasked with configuring Jumbo Frames and the current environment is based on vSphere Standard Switch. Which three steps are required?

- A. Verify the physical switches in the environment have been properly configured.
- B. Configure the Switch MTU.
- C. Configure the Port Group MTU.
- D. Migrate to a Distributed vSwitch.
- E. Configure the Distributed vSwitch MTU.

Correct Answer: ABC

Section: (none)

Explanation

Explanation/Reference:

Reference: <https://pubs.vmware.com/vsphere-55/index.jsp?topic=%2Fcom.vmware.vsphere.networking.doc%2FGUID-E5DDE8D4-A6DA-4F7E-A1E8F611E98731FC.html>

QUESTION 23

By default, how many login attempts will an ESXi host allow before locking out the account?

- A. 7

- B. 8
- C. 10
- D. 5

Correct Answer: C

Section: (none)

Explanation

Explanation/Reference:

Reference: <https://pubs.vmware.com/vsphere-60/index.jsp?topic=%2Fcom.vmware.vsphere.security.doc%2FGUID-DC96FFDB-F5F2-43EC-8C7305ACDAE6BE43.html>

QUESTION 24

VMware vRealize Log Insight can be configured to send notification events to which endpoint?

- A. vRealize Infrastructure Navigator
- B. vRealize Configuration Manager
- C. vRealize Operations Manager
- D. vCenter Server

Correct Answer: C

Section: (none)

Explanation

Explanation/Reference:

Reference: <https://pubs.vmware.com/log-insight-40/index.jsp?topic=%2Fcom.vmware.log-insight.administration.doc%2FGUID-C73DFC4F-53A6-4F6A-9883A4916AD3AA80.html>

QUESTION 25

Which three actions are available in Troubleshooting Mode in the ESXi Direct Console User Interface (DCUI)? (Choose three.)

- A. Enable ESXi Shell.

<https://vceplus.com/>

- B. Modify DCUI idle timeout.
- C. Modify Password.
- D. Restart Management Network.
- E. Modify SSH timeout.

Correct Answer: ABE

Section: (none)

Explanation

Explanation/Reference:

QUESTION 26

Which are two requirements for vMotion without shared storage? (Choose two.)

- A. The source host must have access to the destination storage.
- B. The hosts must be licensed with vSphere Enterprise Plus.
- C. The destination host must have access to any RDM LUNs.
- D. The source and destination hosts must have identical CPUs.
- E. Hosts must be running vSphere 5.1 or later.

Correct Answer: CE

Section: (none)

Explanation

Explanation/Reference:

Reference: <https://pubs.vmware.com/vsphere-51/index.jsp?topic=%2Fcom.vmware.vsphere.vcenterhost.doc%2FGUID-9F1D4A3B-3392-46A3-872073CBFA000A3C.html>

QUESTION 27

When a vSphere Administrator powers on a VM with the following configuration, what will be the resulting swap file size?

▼  *Memory			
RAM (*)	4	▼	GB ▼
Reservation (*)	2	▼	GB ▼
	<input type="checkbox"/> Reserve all guest memory (All locked)		
Limit (*)	3	▼	GB ▼
Shares	Normal	▼	40960 ▼

- A. 4 GB
- B. 2 GB
- C. 3 GB
- D. 1 GB

Correct Answer: B

Section: (none)

Explanation

Explanation/Reference:

QUESTION 28

Which virtual SCSI controller would be recommended when deploying a Windows Server 2012 R2 VM that will host a database server which is expected to generate high I/O?

- A. LSI Logic
- B. PVSCSI
- C. LSI Logic SAS
- D. BusLogic

Correct Answer: B

Section: (none)

Explanation**Explanation/Reference:**

Reference: <http://www.vmware.com/content/dam/digitalmarketing/vmware/en/pdf/solutions/sql-server-on-vmware-best-practices-guide.pdf>

QUESTION 29

A Primary Fault Tolerant VM is performing poorly despite its ESXi host having adequate resources and CPUs are idle. Other hosts in the cluster are much more heavily utilized.

What is the cause?

- A. The Secondary VM is assigned to a different portgroup than the Primary.
- B. The Secondary VM is running more applications than the Primary.
- C. The Secondary VM is running on an ESXi host that is overcommitted.
- D. The vMotion network has not been configured for Jumbo Frames.

Correct Answer: C

Section: (none)

Explanation**Explanation/Reference:****QUESTION 30**

What is the VMware recommended way to distribute storage I/O loads across multiple paths to minimize downtime and remove potential bottlenecks?

- A. Enable Storage I/O Control.
- B. Configure storage replication.
- C. Configure multipathing.
- D. Enable storage DRS and configure datastore clusters.

Correct Answer: C

Section: (none)

Explanation**Explanation/Reference:****QUESTION 31**

A VMware vSphere 6.x Administrator is implementing a new eight-node cluster for business critical applications. Each server will be configured with two 10 GbE network adapters and will utilize iSCSI for storage on one subnet.

Which feature is required to implement this solution?

- A. Storage DRS
- B. LACP
- C. Network I/O Control
- D. VMkernel Port Binding

Correct Answer: D

Section: (none)

Explanation

Explanation/Reference:

QUESTION 32

What is the maximum supported RAM per virtual machine (VM) in vSphere 6.5?

- A. 6128 GB
- B. 2048 GB
- C. 8192 GB
- D. 4096 GB

Correct Answer: A

Section: (none)

Explanation

Explanation/Reference:

Reference: <https://www.vmware.com/pdf/vsphere6/r65/vsphere-65-configuration-maximums.pdf> (page 9)

QUESTION 33

Which two options can change the thin provisioned disk to thick provisioned? (Choose two.)

- A. Use vMotion to migrate the VM to another ESXi host without moving the disks.
- B. Use Storage vMotion of the running VM to the same datastore and select Thick Provision.
- C. Power off the VM, locate the VMDK disk in the Datastore browser, right-click that and select Inflate.

D. Use Storage vMotion of the running VM to another datastore and select Thick Provision.

Correct Answer: CD

Section: (none)

Explanation

Explanation/Reference:

Reference https://pubs.vmware.com/vsphere-65/index.jsp?topic=%2Fcom.vmware.vsphere.vm_admin.doc%2FGUID-E8F50BEC-F575-4AB1-BC77D9A13CDBDCF7.html

QUESTION 34

What two utilities provide a VMware vSphere 6.x Administrator a detailed look at how ESXi uses resources in real time? (Choose two.)

- A. Esxtop
- B. Vim-cmd
- C. Resxtop
- D. Esxcli

Correct Answer: AC

Section: (none)

Explanation

Explanation/Reference:

Reference: <https://pubs.vmware.com/vsphere-51/index.jsp?topic=%2Fcom.vmware.vsphere.monitoring.doc%2FGUID-A31249BF-B5DC-455B-AFC77D0BBD6E37B6.html>

QUESTION 35

What two files are created when the Take snapshot operation is executed? (Choose two.)

- A. .delta.vmdk
- B. .nvram
- C. .vmsn
- D. .lck

Correct Answer: AC

Section: (none)

Explanation

Explanation/Reference:

Reference:

https://pubs.vmware.com/vsphere-51/index.jsp?topic=%2Fcom.vmware.vsphere.vm_admin.doc%2FGUID-38F4D574-ADE7-4B80-AEAB-7EC502A379F4.html

QUESTION 36

Which three object types can be stored in the Content Library? (Choose three.)

- A. vDS backups
- B. VM templates
- C. vAPP templates
- D. ISO files

Correct Answer: BCD

Section: (none)

Explanation

Explanation/Reference:

Reference: <https://virtualizationreview.com/articles/2015/07/02/how-to-use-the-vcenter-6-content-library.aspx>

QUESTION 37

A vSphere Administrator sees the alarm:

vSphere HA virtual machine failed to failover

This occurred for a number of virtual machines on a particular ESXi host in a cluster with vSphere High Availability (HA) enabled. The virtual machines guest operating systems never reported a power event.

What happened?

- A. The virtual machines were vMotioned off of the ESXi host.
- B. The ESXi host is still running but has disconnected from the network.
- C. The ESXi host failed and vSphere HA successfully failed over the virtual machines.
- D. The previous virtual machine cloning operations failed to complete.

Correct Answer: C

Section: (none)

Explanation

Explanation/Reference:

QUESTION 38

Which three options are available for remediation with Proactive HA? (Choose three.)

- A. Quarantine mode for moderate and Power off for severe failure.
- B. Quarantine mode for all failures.
- C. Power off for all failures.
- D. Quarantine mode for moderate and Maintenance mode for severe failure.
- E. Maintenance mode for all failures.

Correct Answer: BDE

Section: (none)

Explanation

Explanation/Reference:

Reference: <https://docs.vmware.com/en/VMware-vSphere/6.5/com.vmware.vsphere.avail.doc/GUID-3E3B18CC-8574-46FA-9170-CF549B8E55B8.html>

QUESTION 39

Virtual machines do not power on after completing the clone or deploy from template workflow in the vSphere Web Client.

What two solutions will fix this problem? (Choose two.)

- A. Increase the virtual machine memory reservation.
- B. Increase the amount of memory assigned to the virtual machine.
- C. Increase the EVC compatibility mode setting.
- D. Increase the datastore size where the virtual machine swap file exists.

Correct Answer: AD

Section: (none)

Explanation

Explanation/Reference:

Reference: <https://pubs.vmware.com/vsphere-51/index.jsp?topic=%2Fcom.vmware.vsphere.troubleshooting.doc%2FGUID-2742CE14-20FD-416F-B89CA156053A973F.html>

QUESTION 40

What two scenarios will prevent extending a VMDK that is attached to a powered on VM? (Choose two.)



<https://vceplus.com/>

- A. VMDK has snapshots present.
- B. VMDK is connected using LSI logic SAS controller.
- C. VMDK is connected using IDE controller.
- D. VMDK is running an unsupported Guest OS.

Correct Answer: AD

Section: (none)

Explanation

Explanation/Reference:

Reference: <https://kb.vmware.com/s/article/1004071>



QUESTION 41

ESXi supports which three iSCSI adapters? (Choose three.)

- A. Software
- B. Protocol Endpoint
- C. FCoE
- D. Dependent Hardware
- E. Independent Hardware

Correct Answer: ADE

Section: (none)

Explanation

Explanation/Reference:

Reference: <https://docs.vmware.com/en/VMware-vSphere/5.5/com.vmware.vsphere.storage.doc/GUID-C476065E-C02F-47FA-A5F7-3B3F2FD40EA8.html>

QUESTION 42

What two virtual hardware devices can be added to a powered on VM? (Choose two.)

- A. Virtual disk connected using SCSI controller
- B. Virtual disk connected using IDE controller
- C. Network adapter
- D. Serial Port

Correct Answer: AC

Section: (none)

Explanation

Explanation/Reference:

Reference: https://pubs.vmware.com/vsphere-4-esx-vcenter/index.jsp#com.vmware.vsphere.webaccess.doc_41/adding_hardware_to_a_virtual_machine/t_add_a_network_adapter.html

QUESTION 43

Which three options are available when applying a Customization Specification to an existing virtual machine? (Choose three.)

- A. Modify a specification
- B. Select an existing specification
- C. Import a specification
- D. Create a specification from an existing specification
- E. Create a specification



Correct Answer: BDE

Section: (none)

Explanation

Explanation/Reference:

Reference: https://docs.vmware.com/en/VMware-vSphere/6.5/com.vmware.vsphere.vm_admin.doc/GUID-EB5F090E-723C-4470-B640-50B35D1EC016.html

QUESTION 44

A VMware vSphere 6.x Administrator is tasked with configuring vRealize Log Insight.

What three ports can be used for syslog? (Choose three.)

- A. 514/UDP
- B. 1514/TCP
- C. 8443/TCP
- D. 514/TCP
- E. 123/UDP

Correct Answer: ABD

Section: (none)

Explanation

Explanation/Reference:

Reference: <https://pubs.vmware.com/log-insight-43/index.jsp?topic=%2Fcom.vmware.log-insight.administration.doc%2FGUID-848E4804-3837-4D5E-956E2216B17376AD.html>

QUESTION 45

What are two valid iSCSI discovery methods? (Choose two.)

- A. Assigned Discovery
- B. Automatic Discovery
- C. Static Discovery
- D. LUN Masking
- E. Dynamic Discovery

Correct Answer: CE

Section: (none)

Explanation

Explanation/Reference:

Reference <https://docs.vmware.com/en/VMware-vSphere/6.5/com.vmware.vsphere.storage.doc/GUID-66215AF3-2D81-4D1F-92D4-B9623FC1CB0E.html>

QUESTION 46

A vCenter Server displays this error for a single host:

Virtual machine creation may fail because agent is unable to retrieve VM creation options from the host

Which action will allow a vSphere Administrator to resolve the issue?

- A. Log in to the vSphere Web Client, select the ESXi host and manually place it into Quarantine Mode.
- B. Log in to the vCenter Server Appliance Management UI and reboot the VCSA.
- C. Log in to the vSphere Web Client, select the cluster that the ESXi host belongs to and turn off DRS.
- D. Log in to the host DCUI, press F2 and navigate to Troubleshooting Options> Restart management Agents.

Correct Answer: D

Section: (none)

Explanation

Explanation/Reference:

Reference: <https://kb.vmware.com/s/article/1003490>

QUESTION 47

Which option is true during a virtual machine cold migration?

- A. Data is transferred over the vMotion VMKernel interface.
- B. The datastore of the virtual machine cannot be changed.
- C. Migrating a virtual machine from an Intel-based host to a AMD-based host generates an error.
- D. Migrating a 64-bit virtual machine to a 32-bit host generates a warning.

Correct Answer: D

Section: (none)

Explanation

Explanation/Reference:

Reference: <https://docs.vmware.com/en/VMware-vSphere/6.0/com.vmware.vsphere.vcenterhost.doc/GUID-98C18721-A4B0-4BD2-96BF-1BBC29391B3E.html>

QUESTION 48

A vSphere Administrator notices that one of the virtual machines has been configured for VMDirectPath I/O, and a physical NIC has been assigned to the VM.

What feature is not available to this VM?

- A. Storage DRS
- B. VMware Tools upgrades
- C. vMotion
- D. Virtual Machine Compatibility version upgrades

Correct Answer: C

Section: (none)

Explanation

Explanation/Reference:**QUESTION 49**

A VMware vSphere 6.x Administrator has been tasked with enabling the Integrated Load Balancer for the new vRealize Log Insight cluster.

What three options are required before the Integrated Load Balancer can be used? (Choose three.)

- A. The time on the vRealize Log Insight virtual appliance must be synchronized with an NTP server.
- B. All vRealize Log Insight nodes are configured as the same size.
- C. The vRealize Log Insight master and work nodes must have CA signed certificates.
- D. Verify that all vRealize Log Insight nodes and the specified Integrated Load Balancer IP address are on the same network.
- E. The vRealize Log Insight master and worker nodes must have the same certificates.

Correct Answer: ADE

Section: (none)

Explanation

Explanation/Reference:

Reference: <http://pubs.vmware.com/log-insight-33/index.jsp?topic=%2Fcom.vmware.log-insight.administration.doc%2FGUID-72CB469A-F276-438D-BC9377853E2CC0B9.html>

QUESTION 50

A vSphere Administrator attempts to remove a host from a vSphere distributed switch, and fails. There is a notification that resources are still in use.

What are two possible causes? (Choose two.)

- A. There are virtual machine network adapters connected to the distributed switch.
- B. There are VMkernel adapters on the distributed switch that are in use.
- C. The administrator does not have sufficient rights to remove the host from the distributed switch.
- D. The ESXi host has a virtual machine with over 256 GB RAM assigned.

Correct Answer: AB

Section: (none)

Explanation

Explanation/Reference:

Reference: <https://docs.vmware.com/en/VMware-vSphere/6.0/com.vmware.vsphere.troubleshooting.doc/GUID-038AC93F-D710-48ED-8E3B-258A23FB2930.html>

QUESTION 51

A vSphere Administrator wants to migrate a virtual machine from a host with an AMD Opteron CPU to an intel Xeon CPU.

Which method should be used?

- A. Storage vMotion
- B. vMotion

C. Cold Migration

D. Hot Migration

Correct Answer: C

Section: (none)

Explanation

Explanation/Reference:

Reference: <https://kb.vmware.com/s/article/1005764#Does%20EVC%20allow%20AMD%20and%20Intel%20CPUs%20to%20be%20vMotion%20compatible>

QUESTION 52

A vSphere Administrator has stated that currently Private VLAN is utilized to prevent cross-talk on the dedicated backup network.

What two actions are required to implement Private VLAN in VMware vSphere? (Choose two.)

A. Configure Private VLAN at the dvPort Group.

B. Upgrade to VMware vSphere Enterprise Plus.

C. Enable Promiscuous Mode.

D. Configure Private VLAN at the dvSwitch level.

Correct Answer: AC

Section: (none)

Explanation

Explanation/Reference:

QUESTION 53

What are two valid states for Compliance Status in VM Storage Policy? (Choose two.)

A. Compliant

B. Orphaned

C. Invalid

D. Out of Date

Correct Answer: AD

Section: (none)

Explanation

Explanation/Reference:

Reference: <https://docs.vmware.com/en/VMware-vSphere/6.5/com.vmware.vsphere.storage.doc/GUID-133B65D0-CE10-45E7-BFA5-74CAD19E0DFD.html>

QUESTION 54

A VMware vSphere 6.x Administrator is looking at the following output from esxtop on an ESXi host:

2:24:33pm up 35 days 14:18, 819 worlds, 11 VMs, 28 vCPUs; CPU load average: 0.07, 0.07, 0.07										
ADAPTR PATH	NPTH	CMDS/s	READS/s	WRITES/s	MBREADS/s	MBWRTN/s	DAVG/cmd	KAVG/cmd	GAVG/cmd	QAVG/cmd
vmhba0 -	0	0.00	0.00	0.00	0.00	0.00	0.00	0.00	0.00	0.00
vmhba1 -	0	0.00	0.00	0.00	0.00	0.00	0.00	0.00	0.00	0.00
vmhba2 -	1	0.19	0.00	0.19	0.00	0.00	22.70	0.03	22.73	0.00
vmhba3 -	0	0.00	0.00	0.00	0.00	0.00	0.00	0.00	0.00	0.00
vmhba32 -	1	0.00	0.00	0.00	0.00	0.00	0.00	0.00	0.00	0.00
vmhba33 -	0	0.00	0.00	0.00	0.00	0.00	0.00	0.00	0.00	0.00
vmhba34 -	0	0.00	0.00	0.00	0.00	0.00	0.00	0.00	0.00	0.00
vmhba35 -	0	0.00	0.00	0.00	0.00	0.00	0.00	0.00	0.00	0.00
vmhba36 -	0	0.00	0.00	0.00	0.00	0.00	0.00	0.00	0.00	0.00
vmhba37 -	0	0.00	0.00	0.00	0.00	0.00	0.00	0.00	0.00	0.00
vmhba38 -	0	0.00	0.00	0.00	0.00	0.00	0.00	0.00	0.00	0.00
vmhba39 -	0	0.00	0.00	0.00	0.00	0.00	0.00	0.00	0.00	0.00
vmhba4 -	0	0.00	0.00	0.00	0.00	0.00	0.00	0.00	0.00	0.00
vmhba40 -	0	0.00	0.00	0.00	0.00	0.00	0.00	0.00	0.00	0.00
vmhba41 -	0	0.00	0.00	0.00	0.00	0.00	0.00	0.00	0.00	0.00

What does DAVG/cmd represent?

- A. Average device latency per command in milliseconds
- B. Average ESXi VMkernel latency per command in milliseconds
- C. Average queue latency per command in milliseconds
- D. Average guest operating system latency per command in milliseconds.

Correct Answer: A

Section: (none)

Explanation

Explanation/Reference:

Reference: <http://www.yellow-bricks.com/esxtop/>

QUESTION 55

Which two statements are Datastore Cluster requirements? (Choose two.)

- A. Datastore clusters can only contain VMFS datastores.
- B. Datastores shared across multiple data centers cannot be included in a datastore cluster.



<https://vceplus.com/>

- C. NFS and VMFS datastores cannot be combined in the same datastore cluster.
- D. Datastore clusters must contain three or more datastores.

Correct Answer: BC

Section: (none)

Explanation

Explanation/Reference:

Reference: <https://pubs.vmware.com/vsphere-51/index.jsp?topic=%2Fcom.vmware.vsphere.resmgmt.doc%2FGUID-34A10B42-C79E-491C-A5AA99E3B5FA2278.html>



QUESTION 56

A vSphere Administrator just finished installing new software on the Windows vCenter Server and notices that vCenter Server services no longer start properly.

What two tasks should be done next? (Choose two.)

- A. Contact the server hardware manufacturer.
- B. Check for network port conflicts.
- C. Reinstall vCenter Server.
- D. Check the vCenter Server logs.

Correct Answer: BD

Section: (none)

Explanation

Explanation/Reference:

QUESTION 57

A vSphere Administrator wants to enable Storage I/O Control. There is a mix of VMFS and NFS datastores. All of the VMFS datastores have hardware acceleration enabled. The Administrator attempts to create a new datastore cluster but is unable to add all of the datastores to the cluster.

What is the problem?

- A. NFS datastores cannot participate in a datastore cluster.
- B. One of the hosts is currently in maintenance mode.
- C. NFS and VMFS datastores cannot be mixed in a datastore cluster.
- D. Datastores with hardware acceleration enabled cannot participate in a datastore cluster.

Correct Answer: C

Section: (none)

Explanation

Explanation/Reference:

Reference: <https://docs.vmware.com/en/VMware-vSphere/6.5/com.vmware.vsphere.resmgmt.doc/GUID-34A10B42-C79E-491C-A5AA-99E3B5FA2278.html>

QUESTION 58

You need to add an object to an existing vApp using the vSphere Web Client. How is this accomplished?

- A. Create an Object Inside the vApp.
- B. Add an Object to a vApp.
- C. Add an Object to the Datastore the vApp is located in.
- D. Move all Objects to a new Datastore folder.

Correct Answer: AB

Section: (none)

Explanation

Explanation/Reference:

Explanation:

to add an object to an existing vApp using the vsphere web client, create an object inside vApp or you can add an object to a vApp.

https://pubs.vmware.com/vsphere-50/index.jsp?topic=%2Fcom.vmware.vsphere.vm_admin.doc_50%2FGUID-12FDA1A4-6214-463B-8D73-FE25454C642E.html

QUESTION 59

Which three items should be validated prior to installing ESXi 6.x? (Choose three.)

- A. Remote Storage has been disconnected.

- B. Installation media is available.
- C. Server hardware clock is set to UTC.
- D. Storage has been partitioned with a VMFS volume.
- E. Network cards have been setup to use Jumbo Frames.

Correct Answer: ABC

Section: (none)

Explanation

Explanation/Reference:

QUESTION 60

Which two badges are major badges in vRealize Operations? (Choose two.)

- A. Risk
- B. Efficiency
- C. Workload
- D. Faults

Correct Answer: AB

Section: (none)

Explanation

Explanation/Reference:

QUESTION 61

Which Single Sign-On deployment mode should an administrator use for two 6.x vCenter Servers configured with linked mode?

- A. Basic Single Sign-On with vCenter Server Heartbeat
- B. Multisite Single Sign-On
- C. Basic Single Sign-On
- D. Single Sign-On with Linked Mode

Correct Answer: B

Section: (none)

Explanation

Explanation/Reference:**QUESTION 62**

Refer to the Exhibit.

An administrator has been given requirements to configure vMotion for a new virtual machine. The configuration should:

Provide Network Redundancy

Use VLAN 550

Be secured against anyone trying to spoof communication

The vSwitch1 configuration is shown in the Exhibit.



vmotion

All

Properties

Policies

Properties

Network label

vmotion

VLAN ID

None (0)

Security

Promiscuous mode

Reject

MAC address changes

Accept

Forged transmits

Accept

Traffic shaping

Average bandwidth

--

Peak bandwidth

--

Burst size

--

Teaming and failover

Load balancing

Route based on originating virtual port

Network failure detection

Link status only

Notify switches

Yes

Failback

Yes

Active adapters

vmnic3

Standby adapters

--

Unused adapters

vmnic2

Which three changes should be made to meet the stated requirements? (Choose three.)

- A. The VLAN ID must be set appropriately.
- B. The default values for MAC Address Changes and Forged Transmits must be altered.
- C. The teaming and failover adapters must be set appropriately.
- D. The Traffic Shaping configuration must be altered.
- E. The Load Balancing Policy must be set appropriately.

Correct Answer: ABC

Section: (none)

Explanation

Explanation/Reference:

QUESTION 63

An administrator is troubleshooting basic network connectivity issues.

Which two scenarios are potential issues that this administrator might face? (Choose two.)

- A. The vSwitch is not attached to the correct physical network.
- B. The portgroup is not configured to use correct VLAN.
- C. Traffic shaping is configured incorrectly.
- D. Jumbo frames is configured incorrectly.

Correct Answer: AB

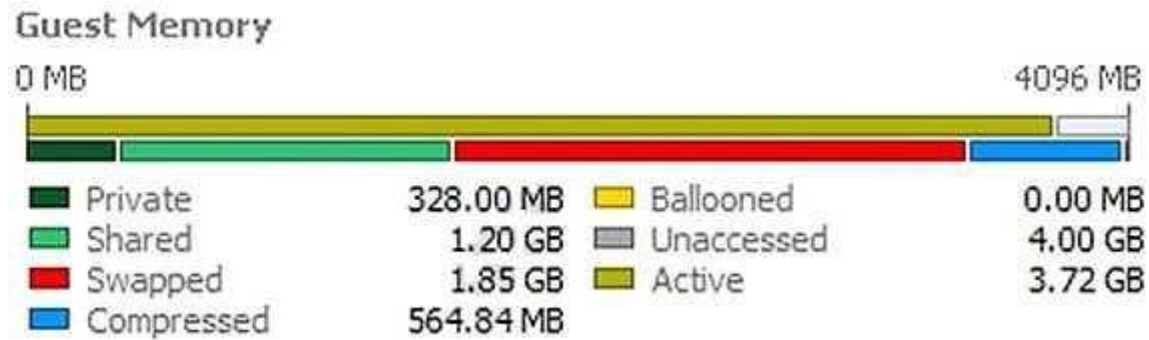
Section: (none)

Explanation

Explanation/Reference:

QUESTION 64

Refer to the Exhibit. A 4 GB Memory virtual machine is experiencing extended memory issues, as shown in the Exhibit.



What potential issues could be attributed to this memory pressure?

- A. A limit is imposed on the virtual memory of this virtual machine.
- B. The Balloon driver has been uninstalled.
- C. A limit has been imposed on the Virtual CPU of the virtual machine.
- D. Storage IO control has been enabled for the virtual machine causing the swapped memory.

Correct Answer: AB

Section: (none)

Explanation

Explanation/Reference:

Explanation:

One of the issue might be that the limit is imposed on the virtual memory of this VM. Secondly, the balloon driver has been uninstalled. That's why it is experiencing memory issues.

QUESTION 65

What is the optimal configuration when building a virtual machine for a single-threaded Windows application?

- A. Deploy single-threaded applications on uniprocessor virtual machines.
- B. Deploy single-threaded applications on symmetric multi-processor virtual machines.
- C. Tune single-threaded applications to take advantage of symmetric multi-processor resources.
- D. Tune Single-threaded applications at the hypervisor level.

Correct Answer: A

Section: (none)

Explanation**Explanation/Reference:****QUESTION 66**

An administrator has just completed performing an interactive installation of ESXi 6.x and is booting the host. How is the network initially configured?

- A. The network is configured by Automatic Private IP Addressing (APIPA).
- B. The network is configured based on the settings detected in DNS.
- C. The network is configured with the address as specified in the installer.
- D. The network is automatically configured by DHCP.

Correct Answer: D

Section: (none)

Explanation**Explanation/Reference:****QUESTION 67**

What must be enabled to ensure that VM Component Protection (VMCP) works in a High Availability cluster?

- A. VMware Tools Virtual Machine Communication Interface (VMCI)
- B. Fault Tolerance
- C. Atomic Test and Set (ATS)
- D. All Paths Down (APD) Timeout

Correct Answer: D

Section: (none)

Explanation**Explanation/Reference:**

Reference: <https://docs.vmware.com/en/VMware-vSphere/6.0/com.vmware.vsphere.avail.doc/GUID-F01F7EB8-FF9D-45E2-A093-5F56A788D027.html>

QUESTION 68

A virtual machine is experiencing performance issues.

The following performance metrics are observed:

- CPU usage value for the virtual machine is above 90%
- CPU ready value for the virtual machine is above 20%

Which two activities will likely resolve the performance issues? (Choose two.)

- A. Set a CPU reservation for the virtual machine.
- B. Increase the CPU limit on the virtual machine.
- C. Decrease CPU shares equally for all virtual machines on the host.
- D. Increase CPU shares equally for all virtual machines on the host.

Correct Answer: AB

Section: (none)

Explanation

Explanation/Reference:

QUESTION 69

A vApp named Sales has a Memory Limit of 32 GB and a CPU Limit of 12,000 MHz.

There are three virtual machines within the vApp:

Sales-DB -- Has a memory reservation of 20 GB. Sales-DC -- Has a memory reservation of 8 GB. Sales-Web -- Has a memory reservation of 8 GB.

Which statement is correct?

- A. All three virtual machines can power on, but will have memory contention.
- B. All three virtual machines can power on without memory contention.
- C. Only two of the three virtual machines can power on.
- D. Only one of the virtual machines can power on.

Correct Answer: C

Section: (none)

Explanation

Explanation/Reference:

QUESTION 70

Which two configurable options apply to both virtual machine CPU and memory allocation? (Choose two.)

- A. Reservation
- B. Shares
- C. Resource Pool
- D. Reserve All

Correct Answer: AB

Section: (none)

Explanation

Explanation/Reference:

QUESTION 71

What information is required as part of an interactive ESXi 6.x installation?



<https://vceplus.com/>

- A. Keyboard layout
- B. IP Address
- C. Root password
- D. DNS information

Correct Answer: AC

Section: (none)

Explanation

Explanation/Reference:

Reference: <https://docs.vmware.com/en/VMware-vSphere/6.5/com.vmware.vsphere.install.doc/GUID-4CBEADFB-FBBD-49B6-A39C-FC810ECC1E49.html>

QUESTION 72

Which two statements are true about VMFS5 datastores on ESXi 6.x? (Choose two.)

- A. Virtual Disk (VMDK) size can be larger than 2TB.
- B. Datastore extent size can be larger than 2TB.
- C. Only Physical Mode Raw Device Map (Passthrough-RDM) can be larger than 2TB.
- D. 2MB block size is required to support larger than 2TB file size.

Correct Answer: AB

Section: (none)

Explanation

Explanation/Reference:

QUESTION 73

Which two SMTP Notification Event Details are specific to alarms triggered by events? (Choose two.)

- A. User Name
- B. Summary
- C. Old Status
- D. Target



Correct Answer: AB

Section: (none)

Explanation

Explanation/Reference:

QUESTION 74

An administrator is upgrading a vSphere Distributed Switch. The existing switch is version 5.0 and the administrator wants to upgrade to the latest version possible. The environment contains several ESXi 5.1 hosts.

Which two options are available to ensure that the upgraded switch will be compatible with these hosts? (Choose two.)

- A. Upgrade the vSphere Distributed Switch to 5.5
- B. Upgrade the ESXi 5.1 hosts to version 5.5, then upgrade the vSphere Distributed Switch to 5.5
- C. Upgrade the vSphere Distributed Switch to 5.1

D. Upgrade the ESXi host switches to 5.5, then upgrade the vSphere Distributed Switch to 5.5

Correct Answer: BC

Section: (none)

Explanation

Explanation/Reference:

QUESTION 75

Which two actions are required when enabling vFlash Read Cache for a virtual machine's virtual disk? (Choose two.)

- A. A value in the Virtual Flash Read Cache text box must be entered.
- B. A Flash Resource Pool for Cache size reservation must be entered.
- C. The Device backing and the block size must be configured.
- D. The Enable virtual flash host swap cache check box must be selected.

Correct Answer: AD

Section: (none)

Explanation

Explanation/Reference:



QUESTION 76

An administrator is re-provisioning an ESXi host and moving it to another datacenter.

Which DCUI option should the administrator use to revert the system configuration to the default settings?

- A. Reset System Configuration
- B. Rebuild Default System Configuration
- C. Revert System Configuration
- D. Renew Default System Configuration

Correct Answer: A

Section: (none)

Explanation

Explanation/Reference:

QUESTION 77

An administrator creates an ESXi cluster using vSphere Auto Deploy.

The ESXi hosts are configured to get a management IP address from a DHCP server.

The administrator needs to troubleshoot the management network on one of the hosts.

Which DCUI option should the administrator use to renew the DHCP lease?

- A. Restart Management Network
- B. Restore Network Settings
- C. Test Management Network
- D. Configure Management Network

Correct Answer: A

Section: (none)

Explanation

Explanation/Reference:



QUESTION 78

A user wants to monitor a business-critical virtual machine to ensure that it doesn't run out of resources.

What metric could be monitored in vRealize Operations to address this concern?

- A. Time Remaining badge
- B. Compliance badge
- C. Reclaimable Waste badge
- D. Density badge

Correct Answer: A

Section: (none)

Explanation

Explanation/Reference:**QUESTION 79**

Which type of Adapter does not require vmkernel networking?

- A. Independent Hardware iSCSI Adapter
- B. Dependent Hardware iSCSI Adapter
- C. Software iSCSI Adapter
- D. Software FCoE Adapter

Correct Answer: A

Section: (none)

Explanation

Explanation/Reference:**QUESTION 80**

A mission-critical virtual machine built on vSphere 4.1 needs to be moved to an ESXi 6.x host. Which virtual hardware version is needed to move the virtual machine without upgrading?

- A. 6
- B. 7
- C. 10
- D. 11

Correct Answer: B

Section: (none)

Explanation

Explanation/Reference:**QUESTION 81**

What is the effective vSphere licensing level during the 60 day evaluation period?

- A. vSphere Foundation Essentials Plus
- B. vSphere Standard
- C. vSphere Enterprise

D. vSphere Enterprise Plus

Correct Answer: D

Section: (none)

Explanation

Explanation/Reference:

QUESTION 82

Which vSphere 6.x feature will allow an organization to utilize native snapshots?

- A. Virtual Volumes
- B. Virtual SAN
- C. VMFS3
- D. VMFS5

Correct Answer: A

Section: (none)

Explanation

Explanation/Reference:



QUESTION 83

An administrator is tasked with performing a vMotion migration of a virtual machine.

The virtual machine is configured as follows:

- vSphere Flash Read Cache (vFRC) enabled
- Is part of a Distributed Resource Cluster (DRS) Cluster

Which two statements are true? (Choose two.)

- A. Each ESXi host in the cluster supports multiple virtual flash resources.
- B. Each ESXi host in the cluster supports one virtual flash resource.
- C. DRS treats powered-on virtual machines with Flash Read Cache as having a preferred affinity to their current host and moves them only for mandatory reasons.
- D. DRS treats powered-on virtual machines with Flash Read Cache as having a required affinity to their current host and does not move them.

Correct Answer: BC

Section: (none)

Explanation

Explanation/Reference:

QUESTION 84

The vSphere administrator attempts to connect to an ESXi host via an SSH client and receives the following security alert:



The vSphere administrator needs to determine whether the RSA key fingerprint shown in the security alert is the fingerprint of the intended ESXi host.

Which tool should the vSphere administrator use?

- A. Direct Console User Interface
- B. vSphere Client
- C. vSphere Web Client
- D. vSphere Management Assistant

Correct Answer: A

Section: (none)

Explanation

Explanation/Reference:

QUESTION 85

An administrator deploys vCenter Server using the embedded Platform Services Controller.

After testing the deployment for a couple of months, it is determined that the environment would be better served with an external Platform Services Controller.

What should the administrator do to meet this new requirement?

- A. Deploy a fresh instance of vCenter Server with an external Platform Services Controller.
- B. Perform a fresh install of an external Platform Services Controller.
- C. Migrate the embedded Platform Services Controller to an external Platform Services Controller.
- D. Upgrade the embedded Platform Services Controller to an external Platform Services Controller.

Correct Answer: A

Section: (none)

Explanation

Explanation/Reference:



QUESTION 86

What happens to the status of users already logged into ESXi Shell when a vSphere administrator enables lockdown mode?



<https://vceplus.com/>

- A. Users remain logged in and can run commands, except to disable lockdown mode.
- B. Users remain logged in and can run commands, including disabling lockdown mode.
- C. Users are immediately logged out of ESXi Shell.
- D. Users are logged out after a timeout specified by the vSphere administrator.

Correct Answer: A

Section: (none)

Explanation

Explanation/Reference:

QUESTION 87

During an upgrade, the ESXi 6.x installer finds an existing version of ESXi and a VMFS3 volume.

No virtual machines exist on the host or VMFS3 volume. The requirement is to upgrade to VMFS5.

Which option should be chosen to meet this requirement?

- A. Upgrade ESXi and preserve the VMFS datastore
- B. Install ESXi and preserve the VMFS datastore
- C. Install ESXi and overwrite the VMFS datastore
- D. Upgrade ESXi and overwrite the VMFS datastore

Correct Answer: C

Section: (none)

Explanation

Explanation/Reference:



QUESTION 88

An administrator has unsuccessfully attempted several times to install an Operating System inside a virtual machine. The administrator finds that the installation fails at random intervals.

Which two actions can be taken to resolve this issue? (Choose two.)

- A. Verify the md5sum and if invalid, download the installation files again.
- B. Attempt the installation an additional time.
- C. Attempt to use a different installation media or installation method.
- D. Create a new virtual machine and attempt the installation with the existing media.

Correct Answer: AC

Section: (none)

Explanation

Explanation/Reference:

QUESTION 89

Refer to the Exhibit. A storage administrator has reported that full utilization of all bandwidth from an ESXi 6.x host is not being seen. In troubleshooting the issue, the Adapter details are shown in the Exhibit.

Adapter Details

Properties Devices Paths			
<input type="button" value="Enable"/> <input type="button" value="Disable"/>			
Runtime Name	Target	LUN	Status
vmhba2:C0:T3:L0	50:06:01:60:c7:20:6a:a4 50:06:0...	0	Active (I/O)
vmhba2:C0:T2:L0	50:06:01:60:c7:20:6a:a4 50:06:0...	0	Active (I/O)
vmhba2:C0:T1:L0	50:06:01:60:c7:20:6a:a4 50:06:0...	0	Disabled
vmhba2:C0:T0:L0	50:06:01:60:c7:20:6a:a4 50:06:0...	0	Active

Based on the exhibit, what is cause of the issue?

- A. The array is not setup to use the correct multipathing policy.
- B. There are no virtual machines on the ESXi host.
- C. Not all links are used because a path is disabled.
- D. Another path needs to be configured.

Correct Answer: C

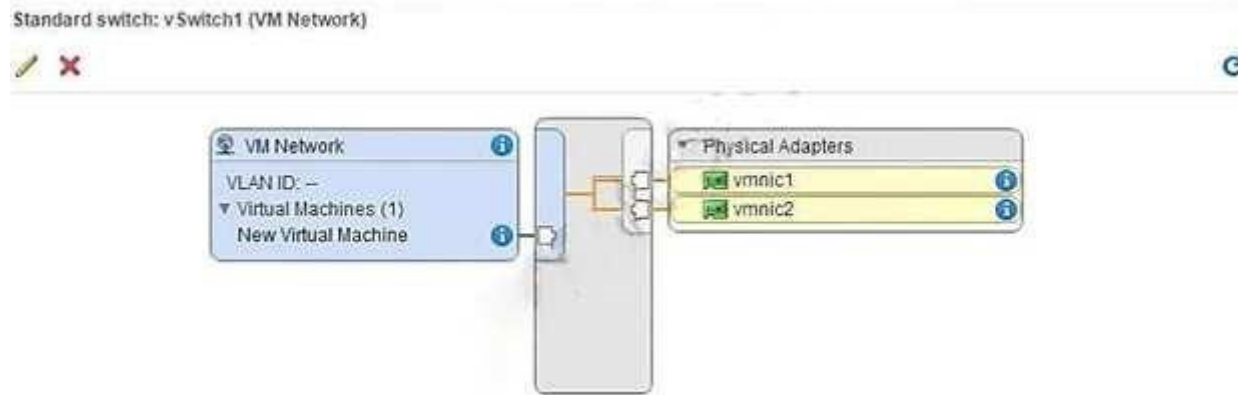
Section: (none)

Explanation

Explanation/Reference:

QUESTION 90

Refer to the Exhibit. An administrator has configured network connectivity for a new virtual machine, as shown in the Exhibit.



What will occur with the network traffic of this virtual machine when communicating externally from vSwitch1?

- A. The virtual machine will communicate on both uplinks
- B. The virtual machine will only communicate on vmnic1
- C. The virtual machine will only communicate on vmnic2
- D. The virtual machine will fail to communicate externally

Correct Answer: D

Section: (none)

Explanation

Explanation/Reference:

QUESTION 91

Refer to the Exhibit. An administrator is adding an NFS datastore as shown in the Exhibit.

A. It contains the IP addresses of the NFS Storage Server to provide multipathing capability.

B. It contains the IP addresses of the ESXi hosts that mount the datastore.

- C. It contains the IP addresses used for Dynamic Discovery of targets.
- D. It contains the IP addresses used for Static Discovery of targets.

Correct Answer: A

Section: (none)

Explanation

Explanation/Reference:

QUESTION 92

An administrator is moving a virtual machine into a resource pool. The VM and resource pool are configured as shown:

VM configuration:

2GHz CPU reservation
1GB Memory limit

Resource Pool configuration:

6GHz CPU reservation
1GB Memory reservation
No limit to memory



What happens to the virtual machine's resource settings when it is moved into the pool?

- A. The VM inherits the resource settings of the resource pool if expandable reservations is enabled.
- B. The VM's reservations and limits are ignored and removed.
- C. The VM keeps the 2GHz CPU reservation but receives the 1GB memory reservation.
- D. The VM keeps the 2GHz CPU reservation and the 1GB Memory limit.

Correct Answer: D

Section: (none)

Explanation

Explanation/Reference:

QUESTION 93

Which two parameters are required when adding an iSCSI target to an iSCSI Software Adapter using Dynamic Discovery? (Choose two.)

- A. The iSCSI device's IP Address or Fully Qualified Domain Name
- B. The Port Number
- C. The iSCSI device's iSCSI Qualified Name (IQN)
- D. The Default Gateway IP Address

Correct Answer: AB

Section: (none)

Explanation

Explanation/Reference:

QUESTION 94

Which two Identity Sources are available to add for vCenter Single Sign-On authentication? (Choose two.)

- A. LocalOS
- B. OpenLDAP
- C. NIS as an LDAP Server
- D. VCMSDS

Correct Answer: AB

Section: (none)

Explanation

Explanation/Reference:

QUESTION 95

How many Link Aggregation Groups (LAGs) can be configured on a vSphere 6.x Distributed Switch?

- A. 64
- B. 96
- C. 128
- D. 256

Correct Answer: A

Section: (none)

Explanation

Explanation/Reference:**QUESTION 96**

Which two NFS Protocol versions does vSphere 6 support? (Choose two.)

- A. Version 3
- B. Version 3.1 C. Version 4
- D. Version 4.1

Correct Answer: AD

Section: (none)

Explanation

Explanation/Reference:**QUESTION 97**

An administrator is attempting to restore a number of files in a directory within the Operating System of a virtual machine. How can the administrator restore the files from a previous backup?

- A. Use the File Level Restore option from the selected backup of the virtual machine in the vSphere Web Client.
- B. Connect to the File Level Restore tool from a web browser in the virtual machine.
- C. Connect to the File Level Restore tool from the VMware Data Protection appliance.
- D. Use the File Level Restore option from the selected backup of the virtual machine in the vSphere Client.

Correct Answer: B

Section: (none)

Explanation

Explanation/Reference:**QUESTION 98**

An organization has a number of virtual machines that would benefit from Fault Tolerance.

These include:

- A single vCPU Apache Server
- A dual vCPU vCenter Server

A quad vCPU SQL Server
An eight vCPU Hadoop Server

Which two virtual machines can be configured to use VMware Fault Tolerance? (Choose two.)



<https://vceplus.com/>

- A. Apache Server
- B. vCenter Server
- C. SQL Server
- D. Hadoop Server

Correct Answer: AC

Section: (none)

Explanation

Explanation/Reference:



QUESTION 99

From which two locations in the inventory hierarchy can you deploy a virtual machine using a template? (Choose two.)

- A. Directly from the template.
- B. From a compute resource.
- C. From an existing virtual machine.
- D. From a Datastore.

Correct Answer: AB

Section: (none)

Explanation

Explanation/Reference:

QUESTION 100

What is a benefit of using Enhanced vMotion Compatibility for an environment?

- A. EVC masks CPU features to allow compatibility between hosts that are dissimilar.
- B. EVC allows for cross platform vMotion to occur.
- C. EVC enables Long Distance vMotion.
- D. EVC enables Storage vMotion functionality.

Correct Answer: A

Section: (none)

Explanation

Explanation/Reference:

QUESTION 101

What are three valid disk configurations for the vSphere Data Protection 6.x Appliance? (Choose three.)

- A. 500GB
- B. 1TB
- C. 1.5TB
- D. 2TB
- E. 4TB



Correct Answer: ABD

Section: (none)

Explanation

Explanation/Reference:

QUESTION 102

Your manager has given you a bash script that retrieves data for ESXi 6.x host configurations.

This data needs to be collected right after the installation of a host and must be run directly on the host.

Which two actions can be used to run this script on an ESXi host? (Choose two.)

- A. Connect to the host with Ruby vSphere Console and run the script from there.
- B. Enable SSH access from the Direct Console User Interface.
- C. Enable the ESXi Shell from the Direct Console User Interface.
- D. Run the script directly from the vSphere Web Client.

Correct Answer: BC

Section: (none)

Explanation

Explanation/Reference:

QUESTION 103

How are ports scaled on vSphere Standard Switches (vSS)?

- A. Ports on a vSS can be dynamically scaled up and down.
- B. Ports on a vSS can only be statically scaled up or down.
- C. Ports on a vSS can only be dynamically scaled down.
- D. Ports on a vSS can only be dynamically scaled up.

Correct Answer: A

Section: (none)

Explanation

Explanation/Reference:



QUESTION 104

An administrator has configured an alarm to be notified when a virtual machine meets two conditions:

high virtual CPU high active
memory consumption

The alarm is malfunctioning and triggering when either condition is met instead of both.

What can be done to correct the issue?

- A. Edit the alarm and select Trigger if ALL of the following conditions are satisfied.
- B. Edit the alarm and select Trigger if ANY of the following conditions are satisfied.
- C. Create two separate alarms, one for CPU and one for memory.
- D. Delete the existing alarm and create a new event based alarm.

Correct Answer: A

Section: (none)

Explanation

Explanation/Reference:

QUESTION 105

Refer to the Exhibit. A storage administrator is not seeing full utilization of all bandwidth from an ESXi host. The vSphere administrator observes the adapter details, as shown in the Exhibit.

Adapter Details

Properties Devices Paths			
<input type="button" value="Enable"/> <input type="button" value="Disable"/>			
Runtime Name	Target	LUN	Status
vmhba2:C0:T3:L0	50:06:01:60:c7:20:6a:a4 50:06:0...	0	Active (I/O)
vmhba2:C0:T2:L0	50:06:01:60:c7:20:6a:a4 50:06:0...	0	Active (I/O)
vmhba2:C0:T1:L0	50:06:01:60:c7:20:6a:a4 50:06:0...	0	Disabled
vmhba2:C0:T0:L0	50:06:01:60:c7:20:6a:a4 50:06:0...	0	Active

What is the probable cause of this issue?

- A. Another path needs to be used to allow full utilization of the bandwidth.
- B. The array is not setup to use the correct multipathing policy.
- C. There are no virtual machines on the host.
- D. No traffic is being sent across it because a path failed.

Correct Answer: D

Section: (none)

Explanation

Explanation/Reference:

QUESTION 106

When is it possible to place a VMFS5 datastore in maintenance mode?

- A. When it is a member of a Storage DRS cluster
- B. When it is a member of Virtual SAN cluster
- C. When it is a member of a multi-extent datastore
- D. When it is a member of a Virtual Volume

Correct Answer: A

Section: (none)

Explanation

Explanation/Reference:

QUESTION 107

Which vSphere 6 Enterprise Edition feature will allow an organization to ensure that critical multi-threaded applications have the maximum possible uptime?

- A. Fault Tolerance
- B. High Availability
- C. Distributed Resource Scheduler
- D. App HA

Correct Answer: A

Section: (none)

Explanation

Explanation/Reference:

QUESTION 108

Why are some virtual machines orphaned after rebooting a High Availability (HA) enabled host?

- A. The Orphaned virtual machines have HA restart disabled.
- B. The Orphaned virtual machines moved recently and the change did not persist.
- C. The host is attached to failed storage.
- D. The host just came out of maintenance mode.

Correct Answer: A

Section: (none)

Explanation

Explanation/Reference:**QUESTION 109**

An administrator creates a DRS cluster of eight ESXi 6.x hosts. There are 10 virtual machines balanced across the hosts. An attempt to place the first host into maintenance mode fails.

What are two reasons that the host failed to enter maintenance mode? (Choose two.)

- A. The DRS cluster Automation Level is set to Partially Automated mode.
- B. One of the virtual machines on the ESXi Host entering maintenance mode is configured with a DRS Host affinity rule Should run on hosts in group.
- C. One of the virtual machines on the ESXi Host entering maintenance mode is configured with a DRS Host affinity rule Must run on hosts in group.
- D. One of the virtual machines on the ESXi Host entering maintenance mode is configured with an individual Automation Level set to Partially Automated.

Correct Answer: AD

Section: (none)

Explanation

Explanation/Reference:**QUESTION 110**

An administrator is attempting to migrate a large Hadoop virtual machine using vMotion.

The administrator notices a delay when the machine is quiesced. The Hadoop virtual machine is processing many transactions a second to an in-memory database. Which two actions would help reduce the amount of time needed to perform a vMotion on this virtual machine? (Choose two.)

- A. Use multiple NICs for the vMotion vmkernel port.
- B. Use a 10Gbps Network card for the vMotion vmkernel port.
- C. Add an additional management network to help transmit the data quicker.
- D. Disable Fault Tolerance before performing the vMotion.

Correct Answer: AB

Section: (none)

Explanation

Explanation/Reference:

QUESTION 111

Which statement is true regarding the licensing of vCenter Server?

- A. The license for vCenter Server must be provided at the time of installation.
- B. Changing the license assigned to vCenter Server requires a restart of the vCenter Server service.
- C. Virtual machines can still be powered on if the vCenter Server license expires.
- D. Licensing for a single vCenter Server installation is determined by the number of managed virtual machines.

Correct Answer: C

Section: (none)

Explanation

Explanation/Reference:

QUESTION 112

An administrator needs to verify that vMotion operations can be performed in a vSphere data center.

What round trip time (RTT) latency is the maximum value that will allow vMotion operations to succeed?

- A. 50ms RTT
- B. 100ms RTT
- C. 150ms RTT
- D. 200ms RTT

Correct Answer: B

Section: (none)

Explanation

Explanation/Reference:

QUESTION 113

What is a valid plug-in status for a plug-in that has been added to a vSphere client?

- A. Disabled
- B. Unknown
- C. Stopped
- D. Installed

Correct Answer: A

Section: (none)

Explanation

Explanation/Reference:

QUESTION 114

A virtual machine has been renamed and an administrator is unable to find files with the new virtual machine name in the datastore.

What is the reason for this?

- A. The names of the files on the datastore do not change.
- B. The names of the files on the datastore have been corrupted.
- C. The virtual machine needs to be re-added to the inventory.
- D. The Distributed Resource Scheduler moved the virtual machine to another host.

Correct Answer: A

Section: (none)

Explanation

Explanation/Reference:



QUESTION 115

A new vApp was built and tested in the corporate headquarters datacenter running vSphere 6.x.

What condition would explain why the virtual machine is failing to boot in an offsite datacenter running on vSphere 5.5?

- A. The virtual machine was built with the default hardware version.
- B. The VMFS 5 datastore is not compatible with virtual machines configured with vSphere 6.x.
- C. A DRS 5.5 cluster cannot run virtual machines configured with vSphere 6.x.
- D. The VMDK file is locked.

Correct Answer: A

Section: (none)

Explanation

Explanation/Reference:

QUESTION 116

When configuring vSphere Replication for a virtual machine, what is the lowest Recovery Point Objective (RPO) that can be selected?

- A. 1 min
- B. 5 min
- C. 10 min
- D. 15min

Correct Answer: B

Section: (none)

Explanation

Explanation/Reference:

QUESTION 117

Which two Fibre Channel zoning options are supported with vSphere 6.x? (Choose two.)

- A. Single-Initiator



<https://vceplus.com/>

- B. Single-Initiator-Single-Target
- C. Multiple-Initiators-Single-Target
- D. Multiple-Initiators-Multiple-Targets

Correct Answer: AB

Section: (none)

Explanation

Explanation/Reference:

QUESTION 118

Which two are true about the Risk badge in vRealize Operations? (Choose two.)

- A. The Risk badge indicates potential future problems that may degrade the performance of the system.
- B. Risks may require attention in the near future.
- C. The Risk badge indicates problems that are degrading performance of the system.
- D. Risks require attention now to correct system performance problems.

Correct Answer: AB

Section: (none)

Explanation

Explanation/Reference:

QUESTION 119

When attempting to power on a Virtual Machine you observe the following error:

Cannot open the disk '/vmfs/volumes/volume/vm/vm-000002.vmdk' or one of the snapshot disks it depends on.

Which three actions will be the best solutions to address this problem? (Choose three.)

- A. Verify that the virtual machine's disk files are present.
- B. Investigate the host and virtual machine log files.
- C. Verify the vmdk descriptor files and if required, recreate them.
- D. Delete the disk file preventing the power on operation.
- E. Migrate or register the virtual machine to a different host.

Correct Answer: ABC

Section: (none)

Explanation

Explanation/Reference:

QUESTION 120

Which two allow for the disabling of Network Rollback operations? (Choose two.)

- A. Modifying the vpxd advanced configuration options and adding the config.vpxd.network.rollback key
- B. Modifying the C:\ProgramData\VMware\CIS\cfg\vmware-vpx\vpzd.cfg file and adjusting the <rollback> xml tag
- C. Modifying the C:\ProgramData\VMware\CIS\cfg\vmware-vpx\vpzd.cfg file and adjusting the <networkrollback> xml tag

D. Modifying the C:\ProgramData\VMware\CIS\cfg\vmware-vpx\firstboot\vpzd-service- spec.prop file and adjusting the <rollback> xml tag

Correct Answer: AB

Section: (none)

Explanation

Explanation/Reference:

QUESTION 121

An administrator is configuring the Failover Order option on a vSphere Distributed Switch.

Which two options should be used with IP-hash load balancing? (Choose two.)

- A. Active Uplinks
- B. Standby Uplinks
- C. Unused Uplinks
- D. Override Failover Order

Correct Answer: AC

Section: (none)

Explanation

Explanation/Reference:

QUESTION 122

An administrator receives a report that no real time statistics are available for a virtual machine in the vCenter Server inventory.

Which two statements indicate likely causes of the problem? (Choose two.)

- A. The virtual machine is powered off.
- B. The host containing the virtual machine is disconnected from vCenter Server.
- C. There is insufficient real time data to display the information.
- D. The vCenter Server service is not running.

Correct Answer: AB

Section: (none)

Explanation

Explanation/Reference:

QUESTION 123

Which three actions can be executed when an alarm is triggered? (Choose three.)

- A. Send an email.
- B. Send an SNMP trap.
- C. Run a script or command.
- D. Run an Orchestrator workflow.
- E. Send a trigger to syslog.

Correct Answer: ABC

Section: (none)

Explanation

Explanation/Reference:

QUESTION 124

Which two events happen when Distributed Resource Scheduler (DRS) is disabled? (Choose two.)

- A. The cluster's resource pool hierarchy and affinity rules are re-established when DRS is turned back on.
- B. The cluster's resource pool hierarchy and affinity rules are not re-established when DRS is turned back on.
- C. The cluster's resource pools are removed from the cluster.
- D. The cluster's resource pools are removed from the cluster and assigned to the hosts.

Correct Answer: BC

Section: (none)

Explanation

Explanation/Reference:

QUESTION 125

An administrator attempts to create a Thick Provisioned Virtual Disk (VMDK) on an NFS datastore; but it fails.

Which two reasons would explain the failure? (Choose two.)

- A. Datastore is on an NFS 3 storage server that does not support Hardware Acceleration
- B. Datastore is on an NFS 4.1 storage server

- C. Only VMFS datastores support "Thick Provisioned" VMDK
- D. The NFS datastore was not created on a "Thick Provisioned" device

Correct Answer: AB

Section: (none)

Explanation

Explanation/Reference:

QUESTION 126

A small company wants to use VMware products for its production systems. The system administrator needs to recommend a solution that will deliver High Availability to the company's production applications.

What is minimum vSphere offering that will support this requirement?

- A. vSphere Essentials
- B. vSphere Essentials Plus
- C. vSphere Hypervisor
- D. vSphere Standard



Correct Answer: B

Section: (none)

Explanation

Explanation/Reference:

QUESTION 127

Which two options would allow a database administrator, with no access to the vSphere infrastructure, to connect to a virtual machine? (Choose two.)

- A. Use the Virtual Machine Remote Console (VMRC).
- B. Use Remote Desktop Protocol (RDP) to connect.
- C. Ask the vSphere administrator to grant permission to access the console through vCenter Server.
- D. Ask the vSphere administrator to grant permission to access with the Horizon View Direct Connect Client.

Correct Answer: BC

Section: (none)

Explanation

Explanation/Reference:

QUESTION 128

A vCenter Operations Manager 5.7 environment is upgraded to vRealize Operations. After the upgrade, the analytics services fail to start.

Which three steps must be taken to resolve the problem? (Choose three.)

- A. Take the vRealize Operations cluster offline.
- B. Delete the activity persistence files.
- C. Bring the cluster back online.
- D. Remove any unresponsive nodes.
- E. Stop the CaSA service.

Correct Answer: ABC

Section: (none)

Explanation

Explanation/Reference:

QUESTION 129

Refer to the Exhibit. An administrator is analyzing a virtual machine as shown in the Exhibit.



What is the current long term risk for this virtual machine?

- A. The virtual machine may run out of memory before April 27.
- B. The virtual machine may continue to function after April 27.
- C. The virtual machine has adequate memory configured for operation for the next 120 days.

D. The virtual machine has adequate memory reservation configured for operation for the next 120 days.

Correct Answer: A

Section: (none)

Explanation

Explanation/Reference:

QUESTION 130

Which two statements are correct when turning off a Distributed Resource Scheduler (DRS) Cluster? (Choose two.)

- A. The resource pool hierarchy of the DRS cluster is maintained.
- B. The resource pool hierarchy of the DRS cluster is removed.
- C. The affinity settings of the DRS cluster are removed and not maintained when DRS is re-enabled.
- D. The affinity settings of the DRS cluster are maintained when DRS is re-enabled.

Correct Answer: BC

Section: (none)

Explanation

Explanation/Reference:



QUESTION 131

Which three operations occur during a cold migration of a virtual machine? (Choose three.)

- A. The virtual machine disks are moved if the datastore is being changed.
- B. The virtual machine is registered with the destination server.
- C. The source virtual machine is removed from the old hosts.
- D. The virtual machine hardware is upgraded.
- E. The virtual machine files are quiesced prior to the migration.

Correct Answer: ABC

Section: (none)

Explanation

Explanation/Reference:

QUESTION 132

A vSphere administrator needs to backup a virtual machine that has a Microsoft SQL Server Database installed.

Which solution allows for an application quiesce to occur during backup?

- A. VMware vCenter Converter
- B. VMware vCenter Site Recovery Manager
- C. VMware vSphere Replication
- D. VMware vSphere Data Protection Advanced

Correct Answer: D

Section: (none)

Explanation

Explanation/Reference:

QUESTION 133

Which three traffic types are available services options when configuring a vmkernel port? (Choose three.)

- A. Provisioning Traffic
- B. Virtual Volumes Traffic
- C. vSphere Replication NFC Traffic
- D. Virtual SAN Traffic
- E. FCoE Traffic

Correct Answer: ACD

Section: (none)

Explanation

Explanation/Reference:

QUESTION 134

An administrator is installing vCenter Server for an environment that has 40 ESXi 6.x Hosts and 150 virtual machines.

Which database would meet the minimal requirements needed for this task?

- A. vFabric Postgres
- B. Microsoft SQL Express 2008

- C. Microsoft SQL Server 2014
- D. Oracle 11g

Correct Answer: A

Section: (none)

Explanation

Explanation/Reference:

Explanation: <https://kb.vmware.com/s/article/2109850>

QUESTION 135

An administrator is creating a new Virtual SAN cluster on a Layer 2 network. There is an existing Virtual SAN cluster on the same Layer 2 network. Which two actions would allow the new Virtual SAN cluster to coexist with the older cluster? (Choose two.)



<https://vceplus.com/>



- A. Change the default Multicast Address on the new Virtual SAN cluster.
- B. Change the default Unicast Address on the new Virtual SAN Cluster.
- C. Create a separate VLAN for each cluster.
- D. Create an ARP Alias for the Virtual SAN VMkernel Network Adapter.

Correct Answer: AC

Section: (none)

Explanation

Explanation/Reference:

Reference: <https://docs.vmware.com/en/VMware-vSphere/6.0/com.vmware.vsphere.virtualsan.doc/GUID-5656EA30-F7C7-494C-A356-E1471942625A.html>

QUESTION 136

What is true about resource pools created on a Distributed Resource Scheduler (DRS) cluster?

- A. A root resource pool is created with the specified values.
- B. A root resource pool is automatically created using the aggregate total of the ESXi host resources in the cluster.

- C. A root resource pool is automatically created using the aggregate total of all resources in the datacenter.
- D. A root resource pool is not needed when creating resource pools on a DRS cluster.

Correct Answer: B

Section: (none)

Explanation

Explanation/Reference:

QUESTION 137

An administrator is unable to remove an ESXi 6.x host from a vSphere Distributed Switch.

What are two likely reasons for this issue? (Choose two.)

- A. Vmkernel interfaces on the switch are still in use.
- B. VM Network port group adapters are connected to different switch.
- C. Physical NICs are migrated to different switch.
- D. VM Network adapters are connected to this switch.

Correct Answer: AD

Section: (none)

Explanation

Explanation/Reference:

QUESTION 138

An administrator is configuring the Maximum Transmission Unit value on a vSphere Distributed Switch.

Which two options are typical values for ESXi networking? (Choose two.)

- A. 1492
- B. 1500
- C. 9000
- D. 9089

Correct Answer: BC

Section: (none)

Explanation

Explanation/Reference:

Reference: <https://kb.vmware.com/s/article/1038827>

QUESTION 139

A developer needs to create a multi-tier development stack for a home lab.

Which vSphere product will support the architecture required for the least software cost?

- A. vSphere Hypervisor
- B. vSphere Essentials
- C. VMware Player
- D. VMware Workstation

Correct Answer: A

Section: (none)

Explanation

Explanation/Reference:**QUESTION 140**

You want to deploy a vApp and dynamically assign IP addresses without a DHCP server on the network.

Which action would you take to accomplish this task?

- A. Enable IP pools.
- B. Configure a local DHCP server in the vApp.
- C. Enable NAT on the vApp router.
- D. Configure the guest OS for workgroup and WINS.

Correct Answer: A

Section: (none)

Explanation

Explanation/Reference:

Reference: <https://docs.vmware.com/en/VMware-vSphere/6.0/com.vmware.vsphere.hostclient.doc/GUID-5B3AF10D-8E4A-403C-B6D1-91D9171A3371.html>

QUESTION 141

Which two High Availability (HA) Cluster admission control policies can help avoid resource fragmentation? (Choose two.)

- A. Define failover capacity by static number of hosts

- B. Define failover capacity by reserving a percentage of the cluster resources
- C. Use dedicated failover hosts
- D. Use Virtual Machine Monitoring

Correct Answer: AC

Section: (none)

Explanation

Explanation/Reference:

Reference: <https://docs.vmware.com/en/VMware-vSphere/6.0/com.vmware.vsphere.avail.doc/GUID-85D9737E-769C-40B6-AB73-F58DA1A451F0.html> <https://docs.vmware.com/en/VMware-vSphere/6.0/com.vmware.vsphere.avail.doc/GUID-53F6938C-96E5-4F67-9A6E-479F5A894571.html>

QUESTION 142

An administrator is attempting to power on a virtual machine, but is unable to do so.

Which two reasons are probable causes of the failure? (Choose two.)

- A. Storage access to the virtual machine swap file has been lost.
- B. One of the virtual machine VMDK files is locked.
- C. Virtual machine is running CentOS 7.0 64-bit.
- D. Virtual machine has Hyper-Threading enabled.

Correct Answer: AB

Section: (none)

Explanation

Explanation/Reference:

QUESTION 143

Which three conditions would prevent Storage I/O Control from being enabled on a group of datastores? (Choose three.)

- A. The datastores planned for the solution are used by different vSphere clusters.
- B. A datastore planned for the solution is configured as a Raw Device Mapping file.
- C. A datastore planned for the solution has three extents.
- D. A datastore planned for the solution is configured as NFS.
- E. The organization has an Enterprise license.

Correct Answer: BCE

Section: (none)

Explanation

Explanation/Reference:

QUESTION 144

An administrator is cloning and configuring five new web server virtual machines.

What would be the benefit of configuring resource shares for the new Vms?

- A. To prioritize access to a resource during contention.
- B. To guarantee access to a resource during contention.
- C. To prioritize access to a resource before contention occurs.
- D. To guarantee access to a resource before contention occurs.

Correct Answer: A

Section: (none)

Explanation

Explanation/Reference:



QUESTION 145

What is the default load balancing policy for a newly created VMkernel port on a vSphere Distributed Switch?

- A. Route based on originating virtual port ID
- B. Route based on IP Hash
- C. Route based on source mac address
- D. Route based on physical NIC load

Correct Answer: A

Section: (none)

Explanation

Explanation/Reference:

QUESTION 146

By default, each ESXi 6.x host is provisioned with a certificate from which root certificate authority?

- A. RedHat Certificate Authority
- B. VMware Certificate Authority
- C. DigiCert Certificate Authority
- D. Verisign Certificate Authority

Correct Answer: B

Section: (none)

Explanation

Explanation/Reference:

QUESTION 147

During the installation of ESXi 6.0, the following error message is reported:

Hardware Virtualization is not a feature of the CPU, or is not enabled in the BIOS.

Which condition would generate this message?

- A. LAHF/SAHF is not enabled in the BIOS.
- B. NX/XD is not enabled in the BIOS.
- C. SSE3 is not enabled in the BIOS.
- D. Hyperthreading is not enabled in the BIOS.

Correct Answer: B

Section: (none)

Explanation

Explanation/Reference:

QUESTION 148

An administrator has a virtual machine that requires four times the compute resources than other virtual machines on the same ESXi 6.x host.

How should the administrator configure the virtual machine settings, in order to be prepared for any resource contention?

- A. Set the shares of the priority virtual machine to High and the rest to Low.

- B. Set the shares of the priority virtual machine to High.
- C. Set the shares of the priority virtual machine to High and the rest to Normal.
- D. Set the shares of the priority virtual machine to Normal and the rest to Low.

Correct Answer: A

Section: (none)

Explanation

Explanation/Reference:

QUESTION 149

An administrator is using the Host Failures to Tolerate Admission Control Policy for a vSphere High Availability (HA) cluster. When configuring this setting on the cluster, the administrator sees this error message:

Insufficient resources to satisfy HA failover level on cluster

What are two likely causes for the error? (Choose two.)

- A. The hosts in the cluster are disconnected.
- B. A host in the cluster is displaying an HA error.
- C. Distributed Resource Scheduler has not been configured on the cluster.
- D. Virtual Machine Component Protection has not been turned on.

Correct Answer: AB

Section: (none)

Explanation

Explanation/Reference:

QUESTION 150

An administrator is only able to see the Health Badge when using the vRealize Operations user interface.

What is the likely cause of this behavior?



<https://vceplus.com/>

- A. The vRealize Operations Foundation License is in use.
- B. The vmware-sps service failed to start.
- C. The vRealize Operations Standard License is in use.
- D. The vmware-rbd-watchdog service failed to start.

Correct Answer: A

Section: (none)

Explanation

Explanation/Reference:

QUESTION 151

Which two components can be used when configuring Enhanced Linked Mode? (Choose two.)

- A. vCenter Server Appliance
- B. vRealize Operations Manager
- C. vSphere Management Appliance
- D. vCenter Server for Windows



Correct Answer: AD

Section: (none)

Explanation

Explanation/Reference:

QUESTION 152

A company has recently incurred financial loss, due to a crashed server that resulted in the loss of critical data.

Which two vSphere 6.x features should this company implement to protect against losing critical data due to physical server failure? (Choose two.)

- A. Virtual Volumes
- B. Enhanced vMotion Capability
- C. High Availability
- D. Fault Tolerance

Correct Answer: CD

Section: (none)

Explanation

Explanation/Reference:

QUESTION 153

Which three vSphere 6.x features require a shared storage infrastructure to work properly? (Choose three.)

- A. Storage Policy Based Management
- B. vSphere Distributed Switch
- C. Fault Tolerance
- D. Distributed Power Management
- E. Dynamic Resource Scheduler

Correct Answer: CDE

Section: (none)

Explanation

Explanation/Reference:



QUESTION 154

Which vSphere 6.x feature would you choose for offsite disaster recovery?

- A. Distributed Power Management
- B. vSphere HA
- C. vSphere Data Protection
- D. Dynamic Resource Scheduler

Correct Answer: C

Section: (none)

Explanation

Explanation/Reference:

QUESTION 155

An IT administrator working in a space agency has just installed some applications that are critical for a satellite launch mission. The administrator wants the applications to work irrespective of any operating system failure.

Which vSphere 6.x feature should the administrator use?

- A. vSphere HA
- B. vSphere Fault Tolerance
- C. vSphere Replication
- D. vSphere Data Protection

Correct Answer: B

Section: (none)

Explanation

Explanation/Reference:

QUESTION 156

Which vSphere 6.x storage service provides array-based operations at the virtual disk level?

- A. Local storage
- B. Virtual Volumes
- C. Virtual SAN
- D. Datastores

Correct Answer: B

Section: (none)

Explanation

Explanation/Reference:

QUESTION 157

Which two statements about virtual switches in vSphere 6.x virtual networking are true? (Choose two.)

- A. Monitors metadata about communications that occur in a network.
- B. Creates isolated networks for testing and development.
- C. Attaches virtual machines to the physical network.
- D. Performs load balancing.

Correct Answer: CD

Section: (none)

Explanation

Explanation/Reference:

QUESTION 158

VMware vSphere 6.x provides which three capabilities? (Choose three.)

- A. Data center extension
- B. Manage virtual machines with simple and intuitive tools
- C. Perform live workload migrations
- D. Zero data center clown time
- E. Predictive analytics

Correct Answer: BCE

Section: (none)

Explanation

Explanation/Reference:

QUESTION 159

Which feature of vSphere 6.x enables organizations to move virtual machines across data centers?

- A. Long Distance vMotion
- B. Content Library
- C. Auto Deploy
- D. Replication

Correct Answer: A

Section: (none)

Explanation

Explanation/Reference:

QUESTION 160

Which three VLAN Tagging modes are available in vSphere 6.x? (Choose three.)

- A. External Switch Tagging
- B. Private VLAN Tagging

- C. Virtual Switch Tagging
- D. VXLAN Tagging
- E. Virtual Guest Tagging

Correct Answer: ACE

Section: (none)

Explanation

Explanation/Reference:

QUESTION 161

An administrator wants to add a web server to an existing multi-tier application consisting of three virtual machines:

A web server

A database server

An application server

The web server should be added to the application when the primary web server reaches:

70% vCPU utilization

55% active memory



Which option will achieve this result?

- A. Create a virtual machine alarm with an action to run a script that starts a new instance of the web server.
- B. Create a host cpu and memory alarm with an action to run a script that starts a new instance of the web server.
- C. Configure HA application monitoring for the web server and set it to trigger deployment of a new instance of the web server.
- D. Configure Fault Tolerance on the virtual machine and leave the secondary machine disabled until needed.

Correct Answer: A

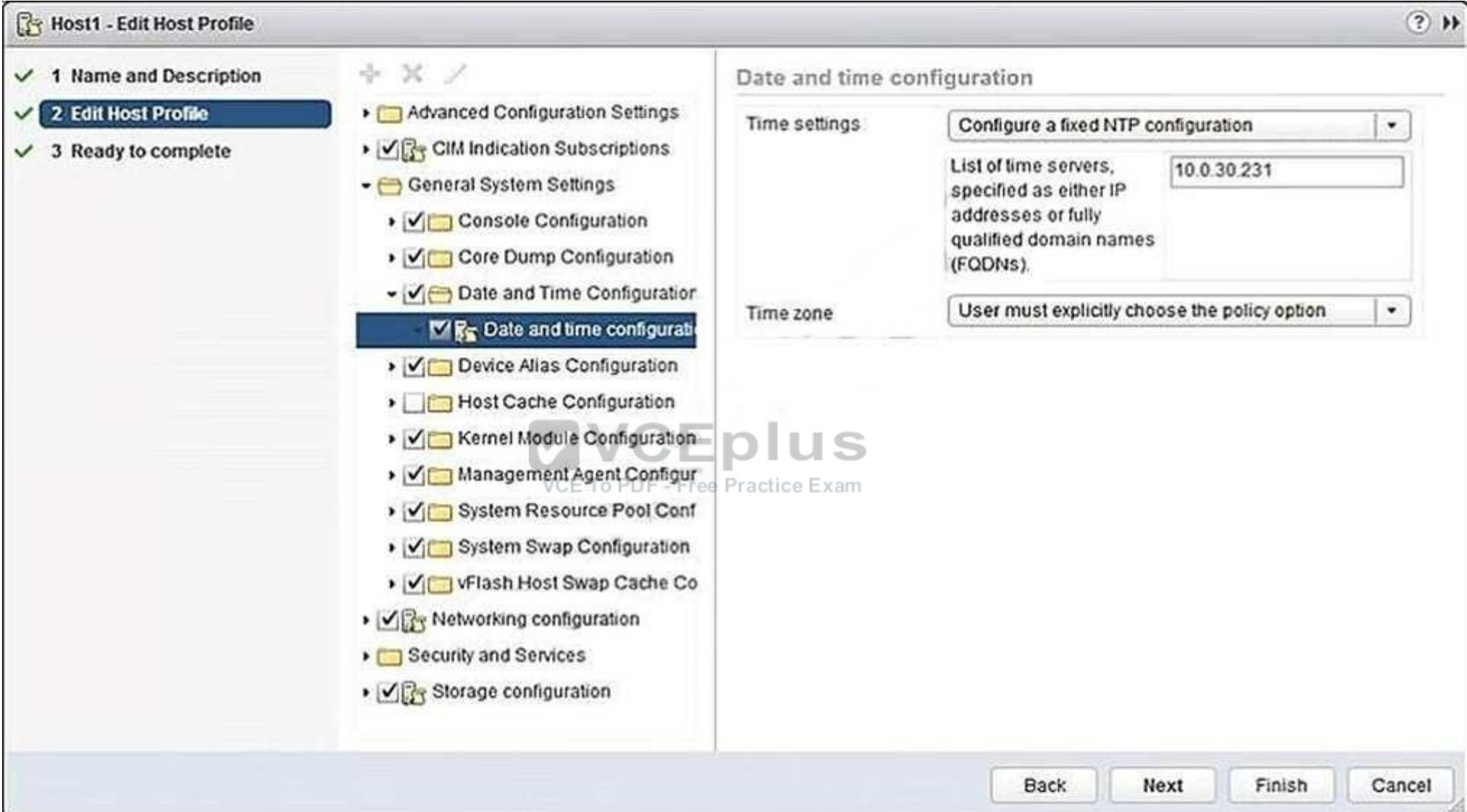
Section: (none)

Explanation

Explanation/Reference:

QUESTION 162

Refer to the Exhibit. An administrator has configured a host profile so that ESXi 6.x hosts will point to the corporate NTP server for time synchronization. The NTP server is located at 10.0.30.213, but time has not been synchronized properly across the ESXi hosts.



Host1 - Edit Host Profile

1 Name and Description
2 Edit Host Profile
 3 Ready to complete

- Advanced Configuration Settings
- ☒ CIM Indication Subscriptions
- General System Settings
 - ☒ Console Configuration
 - ☒ Core Dump Configuration
 - ☒ Date and Time Configuration
 - ☒ Date and time configuration**
 - ☒ Device Alias Configuration
 - ☐ Host Cache Configuration
 - ☒ Kernel Module Configuration
 - ☒ Management Agent Configur
 - ☒ System Resource Pool Conf
 - ☒ System Swap Configuration
 - ☒ vFlash Host Swap Cache Co
- ☒ Networking configuration
- Security and Services
- ☒ Storage configuration

Date and time configuration

Time settings: Configure a fixed NTP configuration

List of time servers, specified as either IP addresses or fully qualified domain names (FQDNs): 10.0.30.231

Time zone: User must explicitly choose the policy option

Back Next Finish Cancel

The administrator reviews Host Profile settings as shown in the Exhibit.

Which two steps are required to resolve the issue? (Choose two.)

- A. Correct the NTP server IP address.
- B. Check the host for host profile compliance.
- C. Remediate the host based on the updated host profile.
- D. Change the NTP server to the FQDN as IP Addresses are not supported.

Correct Answer: AC

Section: (none)

Explanation

Explanation/Reference:

QUESTION 163

Which two Virtual SAN related actions might start resynchronization of virtual machine objects?
(Choose two.)

- A. Editing a virtual machine storage policy to increase the number of replicas.
- B. Editing a virtual machine storage policy to reduce the number of replicas.
- C. Editing a virtual machine storage policy to increase the number of disk stripes.
- D. Editing a virtual machine storage policy to reduce the number of disk stripes.

Correct Answer: AC

Section: (none)

Explanation

Explanation/Reference:

Reference: <https://docs.vmware.com/en/VMware-vSphere/6.0/com.vmware.vsphere.virtualsan.doc/GUID-04ED9C07-BC61-4E3C-9188-9D2E460C9CA3.html>

QUESTION 164

An administrator has just completed installing an ESXi 6.x host, but doesn't know what address has been configured.

Where is the ESXi host IP address configured?

- A. RVC console
- B. Direct Console User Interface
- C. vSphere Web Client
- D. vSphere Client

Correct Answer: B

Section: (none)

Explanation

Explanation/Reference:

QUESTION 165

An ESXi 6.x host consists of 24 logical cores. Hyperthreading is enabled on the host.

What is the maximum number of vCPUs that can be assigned to a virtual machine on this host?

- A. 24
- B. 48
- C. 64
- D. 128

Correct Answer: A

Section: (none)

Explanation

Explanation/Reference:

Reference: <http://wahlnetwork.com/2013/09/30/hyper-threading-gotcha-virtual-machine-vcpusizing/>

QUESTION 166

A High Availability (HA) cluster is configured to respond to a given number of host failures.

The cluster contains virtual machines configured with these settings:

- VM1 has a 1GHz CPU reservation and no Memory reservation
- VM2 has a 2GHz CPU reservation and no Memory reservation - VM3 has no CPU reservation and no Memory reservation

Given this information, what is the correct slot size for the cluster?

- A. The CPU Reservation should be set to 32MHz and the memory reservation should be set to 32MB plus memory overhead.
- B. The CPU reservation should be set to 1 GHz and the memory reservation should be set to 0MB plus memory overhead.
- C. The CPU reservation should be set to 2 GHz, and the memory reservation should be set to 0MB plus the virtual machine memory overhead.
- D. The CPU reservation should be set to 2 GHz, and the memory reservation should be set to 32MB, plus the virtual machine memory overhead.

Correct Answer: C

Section: (none)

Explanation

Explanation/Reference:

QUESTION 167

Which three features can be enabled for a new host cluster? (Choose three.)

- A. Storage Distributed Resource Scheduling
- B. High Availability
- C. Fault Tolerance
- D. Distributed Resource Scheduling
- E. Virtual SAN

Correct Answer: BDE

Section: (none)

Explanation

Explanation/Reference:



QUESTION 168

As part of a multisite Single Sign-On (SSO) deployment what two steps are required to ensure that a change to one Single Sign-On instance is propagated to the other instances? (Choose two.)



<https://vceplus.com/>

- A. Schedule a Replication Task on the primary instance
- B. Select the first instance during the installation of subsequent instances
- C. During the installation of each instance choose Linked-Mode
- D. Enable Synchronize to Active Directory on each instance

Correct Answer: AC

Section: (none)

Explanation

Explanation/Reference:

QUESTION 169

An administrator attempts to install vCenter Single Sign-On Server. The installer returns an error message indicating that the installation failed. Prior to the installation, all setup prerequisites were met. The administrator has generated a vCenter Server Single Sign-On support bundle.

Which two files should the administrator analyze to determine the cause of the failure? (Choose two.)

- A. Server\utils\logs\imsTrace.log
- B. Server\utils\logs\install.txt
- C. %TEMP%\utils\logs\vminst.log
- D. %TEMP%\vminst.log

Correct Answer: AD

Section: (none)

Explanation

Explanation/Reference:

Explanation:

http://kb.vmware.com/selfservice/microsites/search.do?language=en_US&cmd=displayKC&externalId=2033880

https://www.vmware.com/support/ws5/doc/intro_techsup_ws.html

QUESTION 170

Which three steps must be taken to use vSphere Update Manager 6.x to upgrade an ESXi 5.5 host to vSphere 6.x? (Choose three.)

- A. Download an ESXi Image.
- B. Configure the vSphere Update Manager Download Service.
- C. Create a baseline and attach it to the ESXi Host.
- D. Scan the vCenter Content Library for the ESXi Image.
- E. Remediate the ESXi Host.

Correct Answer: ACE

Section: (none)

Explanation

Explanation/Reference:**QUESTION 171**

Which vSphere 6 Standard Edition feature will allow an organization to ensure that critical multi-threaded applications have the maximum possible uptime?

- A. Fault Tolerance
- B. High Availability
- C. Distributed Resource Scheduler
- D. App HA

Correct Answer: A

Section: (none)

Explanation

Explanation/Reference:**QUESTION 172**

An administrator must determine an appropriate backup solution, given these conditions:

- 50 of the virtual machines are in a resource pool named Finance.
- 50 of the virtual machines are in a resource pool named QA.

Which solution allows an administrator the ability to backup 100 virtual machines?

- A. Use Snapshot Manager on the vCenter Server to backup the virtual machines.
- B. Use the VMware Consolidated Backup (vcb) tool on the ESXi Host to backup the virtual machines.
- C. Use the VMware Data Recovery (VDR) Appliance on the vCenter Server to backup the virtual machines.
- D. Use the VMware Data Protection (VDP) Appliance on one of the ESXi Hosts to backup the virtual machines.

Correct Answer: D

Section: (none)

Explanation

Explanation/Reference:**QUESTION 173**

During a new vSphere Distributed Switch configuration, where does the Maximum Transmission Unit (MTU) value get modified?

- A. Uplink Settings B. Switch Settings
- C. Portgroup Settings
- D. NIC Teaming Settings

Correct Answer: B
Section: (none)
Explanation

Explanation/Reference:

Reference: <https://kb.vmware.com/s/article/1010557>

QUESTION 174

An administrator needs to monitor traffic on vSwitches in a vSphere 6.x environment.

Which option, if configured, would accomplish this task?

- A. Forged Transmits
- B. MAC Address Changes
- C. Promiscuous Mode
- D. Notify Switches



Correct Answer: C
Section: (none)
Explanation

Explanation/Reference:

Reference: <https://kb.vmware.com/s/article/1002934>

QUESTION 175

When attempting to access a virtual machine, an administrator is unable to login using the vSphere credentials.

What two options are probable causes of the authentication failure? (Choose two.)

- A. The vSphere credentials have not been granted permissions.
- B. The vSphere credentials are granted read-only permissions.
- C. The vSphere credentials are granted no-access permissions.
- D. The vSphere credentials are not a member of the local administrator group.

Correct Answer: AB

Section: (none)

Explanation

Explanation/Reference:

QUESTION 176

An administrator is planning a vSphere infrastructure with the following specific networking requirements:

- The ability to shape inbound (RX) traffic
- Support for Private VLANs (PVLANS)
- Support for LLDP (Link Layer Discovery Protocol)

What is the minimum vSphere Edition that will support these requirements?

- A. vSphere Essentials Plus
- B. vSphere Standard
- C. vSphere Enterprise
- D. vSphere Enterprise Plus



Correct Answer: D

Section: (none)

Explanation

Explanation/Reference:

Explanation:

<http://www.vmware.com/products/vsphere/compare> <http://www.vmware.com/products/vsphere/features/distributed-switch.html>

QUESTION 177

When modifying a vApp, which two vSphere entities can be added? (Choose two.)

- A. A resource pool
- B. A network pool
- C. A vApp
- D. A folder

Correct Answer: AB

Section: (none)

Explanation

Explanation/Reference:

Reference: https://docs.vmware.com/en/VMware-vSphere/6.5/com.vmware.vsphere.vm_admin.doc/GUID-E05E8AF9-C8F2-4482-B3F0-733C85C6DD97.html

QUESTION 178

An administrator attempts to migrate a suspended virtual machine to a newly deployed vSphere 6.x cluster. The compatibility check fails.

What condition could cause this behavior?

- A. The new vSphere 6.x cluster is running Intel CPUs instead of AMD CPUs.
- B. A suspended virtual machine cannot be migrated.
- C. The hardware virtualization feature of the CPU is not enabled on the new hosts.
- D. A vSphere Distributed Switch is required to migrate a suspended virtual machine.

Correct Answer: A

Section: (none)

Explanation



Explanation/Reference:

Reference: <https://kb.vmware.com/s/article/1005764>

QUESTION 179

An administrator is performing an interactive installation of ESXi 6.x.

Which three options are available for installation? (Choose three.)

- A. DVD
- B. USB
- C. PXE
- D. Scripted
- E. Auto Deploy

Correct Answer: ABC

Section: (none)

Explanation

Explanation/Reference:**QUESTION 180**

What are two ways to identify TCP/IP stack information? (Choose two.)

- A. Using the vSphere Web Client
- B. Using esxcli network ip netstack
- C. Using esxcfg-netstack
- D. Using the vSphere Client

Correct Answer: AB

Section: (none)

Explanation

Explanation/Reference:**QUESTION 181**

An application running in a virtual machine is experiencing performance issues. When utilizing performance monitoring utilities, it is noted that the CPU Utilization of the application is at 100%.

Which two scenarios are probable causes of the CPU contention for the application? (Choose two.)

- A. There is a network I/O constraint.
- B. There is a storage I/O constraint.
- C. There is insufficient disk space assigned to the virtual machine.
- D. The application is not virtualization aware.

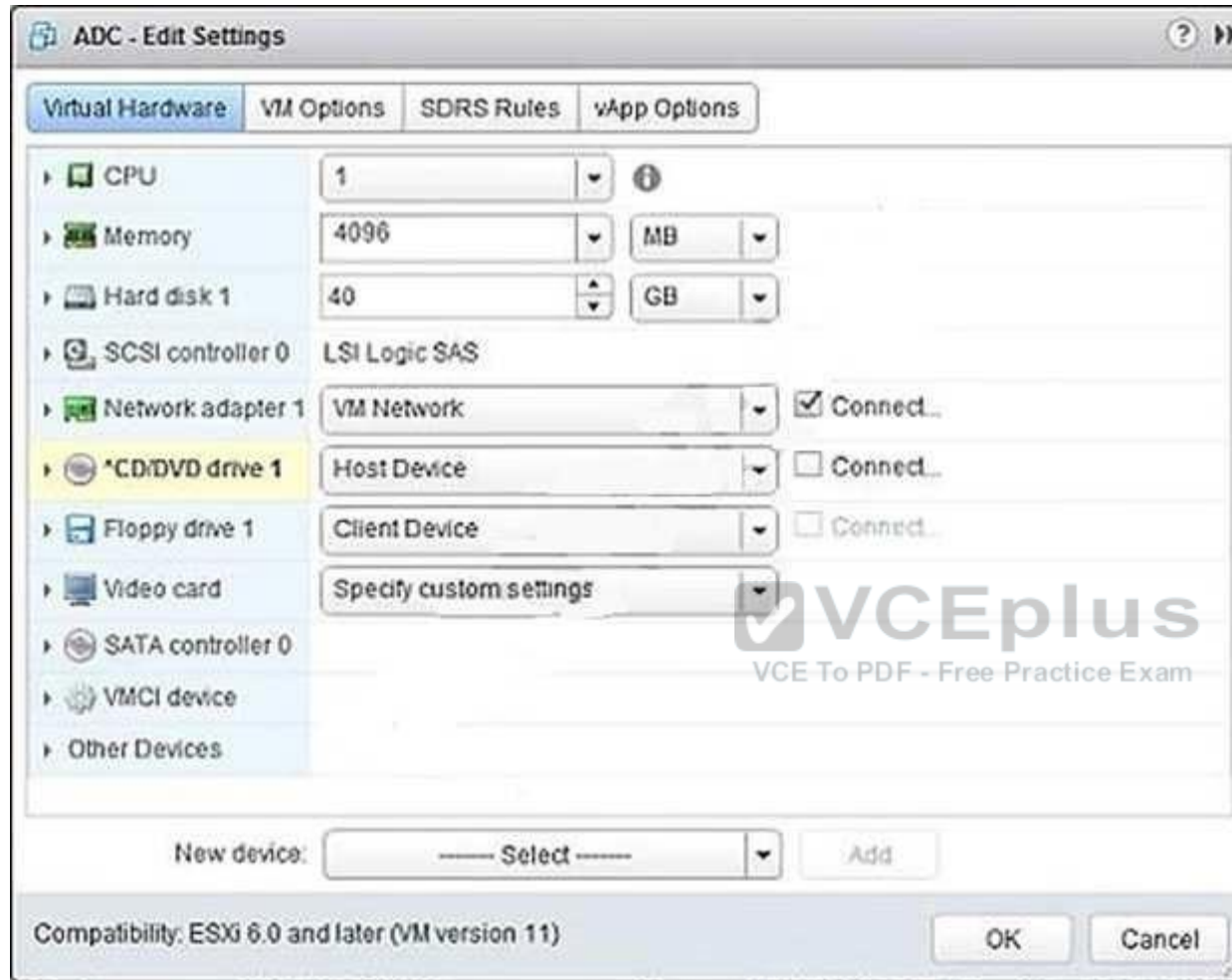
Correct Answer: AB

Section: (none)

Explanation

Explanation/Reference:**QUESTION 182**

Refer to the Exhibit. An administrator is installing Windows into a virtual machine. The DVD has been mounted on the Host and configured for the virtual machine as shown in the Exhibit.



Based on the exhibit, when the virtual machine is booted, why would it attempt to search for a PXE server?

- A. The CD/DVD device is not connected.
- B. The ISO is in the incorrect storage location.
- C. The OS minimum requirements have not been met.
- D. The CD/DVD device is not set to Client Device.

Correct Answer: A

Section: (none)

Explanation

Explanation/Reference:

QUESTION 183

To comply with security requirements, an administrator with a vCenter Server Appliance needs to force logoff of the vSphere web client after 10 minutes of inactivity.

What should the administrator do to meet the requirement?

- A. Edit: /var/lib/vmware/vsphere-client/webclient.properties, modify session.timeout=10
- B. Edit: /opt/vmware/vsphere-client/webclient.properties, modify session.timeout=600
- C. Edit: /var/lib/vmware/vsphere-client/webclient.properties modify session.timeout=600
- D. Edit: /opt/vmware/vsphere-client/webclient.properties, modify session.timeout=10

Correct Answer: A

Section: (none)

Explanation

Explanation/Reference:



QUESTION 184

An administrator enables High Availability (HA) on a Virtual SAN cluster.

Which network is used for HA Network Heartbeat configuration?

- A. The Management network.
- B. The vMotion network.
- C. The Virtual SAN network.
- D. The Provisioning Traffic network.

Correct Answer: C

Section: (none)

Explanation

Explanation/Reference:

QUESTION 185

Which scenario shows a reason for VMware Tools failing to install?

- A. Virtual machine has a CD-ROM configured.
- B. Guest OS Antivirus is blocking the VMware Tools installation.
- C. Guest OS has 64-bit ldd (list dynamic dependencies) utility installed.
- D. Virtual machine is powered on.

Correct Answer: B

Section: (none)

Explanation

Explanation/Reference:

QUESTION 186

An administrator is evaluating whether to deploy vCenter Server on a Windows server or on a vCenter Server appliance. The administrator has the following requirements:

- A web browser will be utilized to manage the vSphere environment.
- 16 ESXi hosts will be deployed.
- Licenses must be shared with a vCenter Server at another site.
- An external Oracle 10g database server will be used to host the vCenter Server database.

Why will the administrator need to deploy vCenter Server on a Windows server?

- A. Linked Mode is a requirement for the solution.
- B. Oracle 10g is a requirement for the solution.
- C. The vSphere web client is a requirement for the solution.
- D. Management of more than 5 hosts is a requirement for the solution.

Correct Answer: A

Section: (none)

Explanation

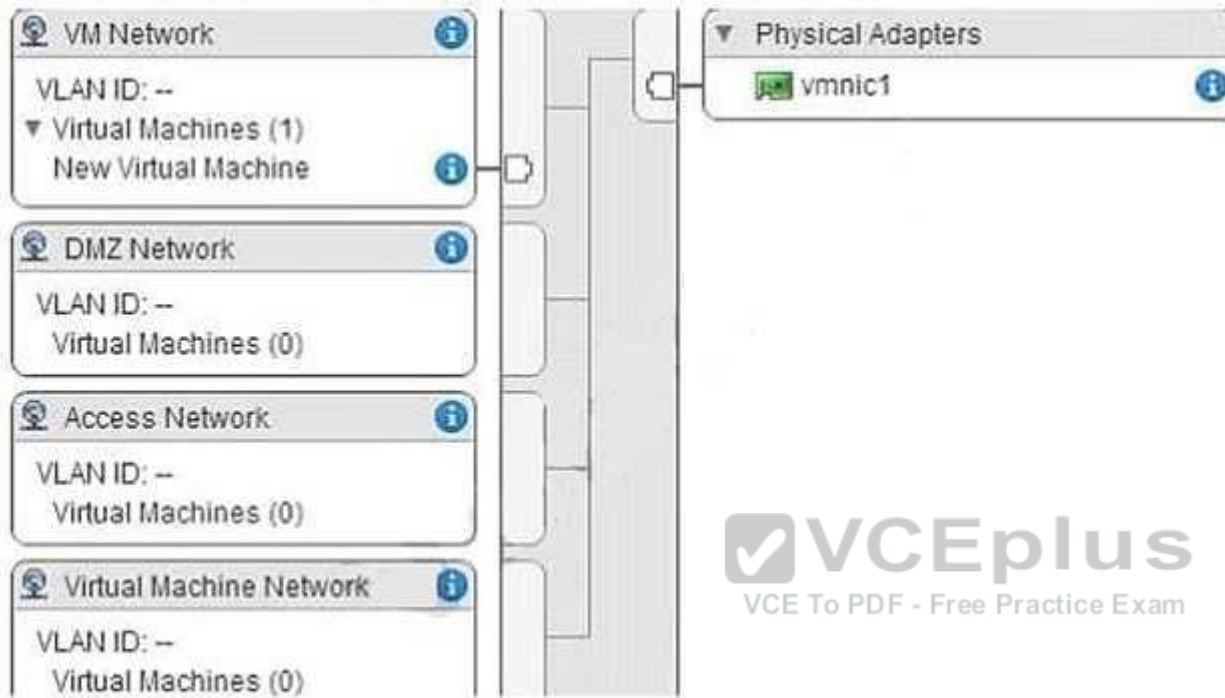
Explanation/Reference:

Explanation:

Since licenses will be shared with a vCenter Server at another site, linked mode would be required. Link mode joins multiple vCenter Server sites and allows them to share information.

QUESTION 187

Refer to the Exhibit. A vSphere 6.x Standard Switch is configured with 4 virtual machine portgroups, as shown in the exhibit.



Which portgroup would be utilized by default when creating a new virtual machine?



<https://vceplus.com/>

- A. Access Network
- B. DMZ Network
- C. VM Network

D. Virtual Machine Network

Correct Answer: A

Section: (none)

Explanation

Explanation/Reference:

Explanation:

The answer is Access Network because it selects the portgroup based on the first letter according to the alphabet

QUESTION 188

An administrator reports that the System Event log data is only available for 24 hours when reviewing the Hardware Status tab.

Which condition could be responsible for the loss of data?

- A. A Reset event log was executed.
- B. The statistical collection level was set to a value of 1.
- C. The boot disk of the host is corrupt.
- D. Syslog has been configured at the vCenter Server level.

Correct Answer: A

Section: (none)

Explanation

Explanation/Reference:

Reference: <https://kb.vmware.com/s/article/2011531>

QUESTION 189

A vApp is running out of compute resources when overall activity is high within the resource pool. At other times, everything is fine.

What should be done to resolve this issue?

- A. Increase the size of the resource pool Shares.
- B. Set the vApp's CPU and Memory Reservation Type to Expandable.
- C. Set the vApp's CPU and Memory Limit to Unlimited.
- D. Create a new resource pool with the existing hardware configuration.

Correct Answer: B

Section: (none)

Explanation

Explanation/Reference:**QUESTION 190**

An administrator logs into the vSphere Web Client, but is unable to see any hosts and clusters.

Which two options could fix the problem? (Choose two.)

- A. Verify that the client web browser and vCenter Server are in the same broadcast domain.
- B. Verify that the vCenter Server system is registered with the same Platform Services Controller as the vSphere Web Client.
- C. Log in to the vCenter Server as a user within the Active Directory domain.
- D. Log in to the vSphere Web Client as a user with permissions on the vCenter Server system.

Correct Answer: BD

Section: (none)

Explanation

Explanation/Reference:



<https://vceplus.com/>