

2V0-602.vmware

Number: 2V0-602  
Passing Score: 800  
Time Limit: 120 min



**Website:** <https://vceplus.com>  
**VCE to PDF Converter:** <https://vceplus.com/vce-to-pdf/>  
**Facebook:** <https://www.facebook.com/VCE.For.All.VN/>  
**Twitter :** [https://twitter.com/VCE\\_Plus](https://twitter.com/VCE_Plus)

<https://vceplus.com/>

## Exam A

### QUESTION 1

A virtual machine loses network connectivity after vMotion. Which two troubleshooting tasks can be performed? (Choose two.)



<https://vceplus.com/>

- A. Verify virtual switch option Notify Switches is set to Yes.
- B. Ensure that Enhanced vMotion Compatibility has been configured.
- C. Change the teaming policy to active/standby mode.
- D. Ensure that the virtual machine is in the proper VLAN ID.

**Correct Answer:** AD

**Section:** (none)

**Explanation**

**Explanation/Reference:**

Reference: <https://kb.vmware.com/s/article/1007464>

### QUESTION 2

Which statement is a requirement for Storage vMotion?

- A. The source and destination VMDKs must be of the same provisioning type.
- B. The virtual machine cannot contain any raw device mappings (RDMs).
- C. Virtual disks must not be larger than 2TB.
- D. The host on which the virtual machine is running must have access to the source and target datastores.

**Correct Answer:** D

**Section: (none)**

**Explanation**

**Explanation/Reference:**

Reference: <https://docs.vmware.com/en/VMware-vSphere/6.5/com.vmware.vsphere.vcenterhost.doc/GUID-A16BA123-403C-4D13-A581-DC4062E11165.html>

**QUESTION 3**

Which two options can be leveraged to configure a remote syslog server for an ESXi 6.x host? (Choose two.)

- A. vRealize Configuration Manager
- B. vRealize Automation
- C. Host Profiles
- D. vSphere Web Client

**Correct Answer: CD**

**Section: (none)**

**Explanation**

**Explanation/Reference:**

Reference: [https://kb.vmware.com/selfservice/microsites/search.do?language=en\\_US&cmd=displayKC&externalId=2003322](https://kb.vmware.com/selfservice/microsites/search.do?language=en_US&cmd=displayKC&externalId=2003322)

**QUESTION 4**

An Administrator would like to take advantage of the new Automatic UNMAP feature in VMFS6. All of the existing datastores are connected via iSCSI and formatted with VMFS5.

In order to minimize disruption and maintain some of the existing VMFS5 volumes, which two steps can be taken to leverage the UNMAP feature in VMFS6? (Choose two.)

- A. Use Storage vMotion to migrate your workloads to the new VMFS6 datastore.
- B. Create a new VMFS6 datastore.
- C. Use Storage DRS to put the VMFS5 datastore into maintenance mode.
- D. Perform an inline upgrade on each of your VMFS5 volumes.

**Correct Answer: AB**

**Section: (none)**

**Explanation**

**Explanation/Reference:**

Reference: <https://kb.vmware.com/s/article/2147824>

**QUESTION 5**

A Long-Distance vMotion migration cannot complete.

Which three situations could cause this? (Choose three.)

- A. The license currently in use for the two hosts in vSphere Enterprise Edition.
- B. The round-trip time between the hosts is greater than 150 milliseconds.
- C. The virtual machine is configured to use Virtual NVMe disks.
- D. The vMotion traffic to the destination host is on the default TCP/IP stack.
- E. The license currently in use for the two hosts is vSphere Enterprise Plus Edition.

**Correct Answer:** ABD

**Section:** (none)

**Explanation**

**Explanation/Reference:**

Reference: <https://kb.vmware.com/s/article/2106949>

**QUESTION 6**

Which Distributed Switch Load Balancing option requires configuration of the physical Ethernet switch to operate properly?

- A. Route based on originating virtual port
- B. Use explicit failover
- C. Route based on IP hash
- D. Route based on physical NIC load
- E. Route based on source MAC hash

**Correct Answer:** C

**Section:** (none)

**Explanation**

**Explanation/Reference:**

Reference: Reference: <https://docs.vmware.com/en/VMware-vSphere/6.5/com.vmware.vsphere.networking.doc/GUID-73AB2E00-FE02-4D1B-970F7D2F21F52825.html>

**QUESTION 7**

Which two choices are valid ways to patch an ESXi host? (Choose two.)

- A. utilizing the esxcli Command Line Interface

- B. vSphere Update Manager
- C. vRealize Operations Manager
- D. configuring a Host Profile

**Correct Answer:** AB

**Section:** (none)

**Explanation**

**Explanation/Reference:**

Reference: <https://kb.vmware.com/s/article/2008939> <https://cliffcahill.com/2017/07/11/patching-esxi-hosts-with-update-manager-on-vsphere-6-5/>

### QUESTION 8

Which three virtual hardware configurations will allow snapshots? (Choose three.)

- A. Physical Mode RDMs
- B. bus sharing
- C. Full memory reservation
- D. Virtual Mode RDMs
- E. 16+ vCPU

**Correct Answer:** CDE

**Section:** (none)

**Explanation**

**Explanation/Reference:**

Reference: [https://docs.vmware.com/en/VMware-vSphere/6.5/com.vmware.vsphere.vm\\_admin.doc/GUID-53F65726-A23B-4CF0-A7D5-48E584B88613.html](https://docs.vmware.com/en/VMware-vSphere/6.5/com.vmware.vsphere.vm_admin.doc/GUID-53F65726-A23B-4CF0-A7D5-48E584B88613.html)

### QUESTION 9

What tool is utilized for detailed performance monitoring of the vCenter Server Appliance?

- A. vim-cmd
- B. esxtop
- C. Perfmon
- D. vmtop

**Correct Answer:** D

**Section:** (none)

**Explanation**



**Explanation/Reference:**

Reference: <https://www.virtuallyghetto.com/2015/02/vimtop-esxtop-for-the-vcsa-6-0.html>

**QUESTION 10**

Which is the VDP appliance available storage configuration maximum?

- A. 2 TB
- B. 62 TB
- C. 8 TB
- D. 4 TB

**Correct Answer: C**

**Section: (none)**

**Explanation**

**Explanation/Reference:**

Reference: <https://blogs.vmware.com/vsphere/2012/08/setting-the-record-straight-on-vmware-vsphere-data-protection.html>

**QUESTION 11**

A vSphere Administrator has been tasked with ensuring that 500 virtual desktops are unable to communicate with one another, but can communicate with required services.

Which two solutions does VMware recommend? (Choose two.)



<https://vceplus.com/>

- A. VMware NSX Distributed Firewall
- B. Private VLAN
- C. vSphere Host Firewall
- D. Port Filtering

**Correct Answer:** AB

**Section:** (none)

**Explanation**

**Explanation/Reference:**

**QUESTION 12**

When trying to export the vApp to the OVF, the option is grayed out.

What solution allows for the export of a vApp?

- A. PowerOff the vApp.
- B. The vApp is marked as Non-Exportable.
- C. Logout of the vSphere Client and use the vSphere WebClient.
- D. Change the portgroup where the VMs are connected to.

**Correct Answer:** A

**Section:** (none)

**Explanation**

**Explanation/Reference:**



**QUESTION 13**

After reconfiguring VUM in the vCenter Server Appliance, a vSphere Administrator must restart the Update Manager service.

Which VMware recommended action will let the Administrator accomplish this task?

- A. On the vSphere Web Client Home page, click System Configuration, then Nodes. Select vCenter Server and, from the Actions menu, select Reboot.
- B. On the vSphere Web Client Home page, click System Configuration, then Services. Select VMware vSphere Update Manager service, and from the Actions menu select Restart.
- C. On the vSphere Web Client Home page, click Update Manager. Select the Update Manager server and use the Actions menu to restart it.
- D. Log in to the vCenter Server Appliance Management UI and reboot the VCSA.

**Correct Answer:** B

**Section:** (none)

**Explanation**

**Explanation/Reference:**

Reference: [https://pubs.vmware.com/vsphere-65/index.jsp?topic=%2Fcom.vmware.vsphere.update\\_manager.doc%2FGUID-DCC3EABE-4973-48E5-8B7DE53598F0E12A.html](https://pubs.vmware.com/vsphere-65/index.jsp?topic=%2Fcom.vmware.vsphere.update_manager.doc%2FGUID-DCC3EABE-4973-48E5-8B7DE53598F0E12A.html)

#### QUESTION 14

Which two options does VM Monitoring use to determine if a virtual machine should be reset? (Choose two.)

- A. Network activity from the virtual machine
- B. I/O activity from the virtual machine
- C. CPU activity from the virtual machine
- D. Heartbeats from VMware Tools

**Correct Answer:** BD

**Section:** (none)

**Explanation**

**Explanation/Reference:**

Reference [https://pubs.vmware.com/vsphere-50/index.jsp?topic=%2Fcom.vmware.vsphere.avail.doc\\_50%2FGUID-62B80D7A-C764-40CB-AE59752DA6AD78E7.html](https://pubs.vmware.com/vsphere-50/index.jsp?topic=%2Fcom.vmware.vsphere.avail.doc_50%2FGUID-62B80D7A-C764-40CB-AE59752DA6AD78E7.html)

#### QUESTION 15

Which option was added to the load balancing calculations of DRS in vSphere 6.5?

- A. Network
- B. Memory
- C. Storage
- D. CPU

**Correct Answer:** B

**Section:** (none)

**Explanation**

**Explanation/Reference:**

Explanation:

Memory Metric for Load Balancing: DRS uses Active memory + 25% as its primary metric when calculating memory load on a host. The Consumed memory vs active memory will cause DRS to use the consumed memory metric rather than Active. This is beneficial when memory is not over-allocated. As a side effect, the UI show the hosts be more balanced.

Reference: <https://blogs.vmware.com/vsphere/2016/10/whats-new-in-vsphere-6-5-host-resource-management-and-operations.html>

#### QUESTION 16



What are two requirements needed to enable a 4 vCPU virtual machine with Fault Tolerance? (Choose two.)

- A. vSphere Enterprise Plus license
- B. 10 GbE uplink for FT logging network
- C. vSphere Standard license
- D. 1 GbE uplink for FT logging network

**Correct Answer:** AB

**Section:** (none)

**Explanation**

**Explanation/Reference:**

Reference: <https://pubs.vmware.com/vsphere-60/index.jsp?topic=%2Fcom.vmware.vsphere.avail.doc%2FGUID-57929CF0-DA9B-407A-BF2E-E7B72708D825.html>

#### QUESTION 17

What are two requirements for Guest Operating System Customizations? (Choose two.)

- A. The ESXi host that the virtual machine is running on must be version 5.5 or later.
- B. Microsoft Sysprep tools must be installed on the Windows VM to be cloned.
- C. VMware Tools must be installed on the virtual machine or template.
- D. The guest operating system being customized must be installed on a disk attached as SCSI node 0:0 in the virtual machine configuration.

**Correct Answer:** CD

**Section:** (none)

**Explanation**

**Explanation/Reference:**

Reference: [https://pubs.vmware.com/vsphere-50/index.jsp?topic=%2Fcom.vmware.vsphere.vm\\_admin.doc\\_50%2FGUID-E63B6FAA-8D35-428D-B40C744769845906.html](https://pubs.vmware.com/vsphere-50/index.jsp?topic=%2Fcom.vmware.vsphere.vm_admin.doc_50%2FGUID-E63B6FAA-8D35-428D-B40C744769845906.html)

#### QUESTION 18

Which two databases are supported for the vCenter Server Appliance 6.x? (Choose two.)

- A. PostgreSQL
- B. Oracle
- C. DB2
- D. Microsoft SQL Server

**Correct Answer:** AB

**Section:** (none)

**Explanation**

**Explanation/Reference:**

Reference: <https://pubs.vmware.com/vsphere-60/index.jsp?topic=%2Fcom.vmware.vsphere.upgrade.doc%2FGUID-8E23C952-56B1-43CB-A1D3F3259FD73FA4.html>

#### QUESTION 19

Which three functions are provided by Storage DRS? (Choose three.)

- A. space load balancing among datastores within a datastore cluster
- B. VM disk sizing recommendations for virtual machines in datastores within a datastore cluster
- C. I/O load balancing among datastores within a datastore cluster
- D. snapshot consolidation recommendations among datastores within a datastore cluster
- E. initial placement recommendations for virtual disks based on space and I/O workload

**Correct Answer:** ACE

**Section:** (none)

**Explanation**



**Explanation/Reference:**

Reference: <https://pubs.vmware.com/vsphere-51/index.jsp?topic=%2Fcom.vmware.vsphere.resmgmt.doc%2FGUID-19B6F05F-D285-4ACB-9B1324A1DE9B4058.html>

#### QUESTION 20

A vSphere Administrator has been tasked with configuring Jumbo Frames and the current environment is based on vSphere Standard Switch. Which three steps are required?



<https://vceplus.com/>

- A. Verify the physical switches in the environment have been properly configured.
- B. Configure the Switch MTU.
- C. Configure the Port Group MTU.
- D. Migrate to a Distributed vSwitch.
- E. Configure the Distributed vSwitch MTU.

**Correct Answer:** ABC

**Section:** (none)

**Explanation**

**Explanation/Reference:**

Reference: <https://pubs.vmware.com/vsphere-55/index.jsp?topic=%2Fcom.vmware.vsphere.networking.doc%2FGUID-E5DDE8D4-A6DA-4F7E-A1E8F611E98731FC.html>

#### QUESTION 21

What is required to create a vSphere Distributed Switch? (Choose two.)

- A. A minimum of two physical uplinks is required.
- B. vSphere Enterprise Plus licensing is required.
- C. The host is added to a vCenter Server.
- D. Login to the ESXi Host with the Root account.



**Correct Answer:** AC

**Section:** (none)

**Explanation**

**Explanation/Reference:**

#### QUESTION 22

When managing search queries in vRealize Log Insight, what three actions can be performed? (Choose three.)

- A. Share the Current Query
- B. Load a Query
- C. Take a Snapshot of a Query
- D. Pause the Current Query
- E. Duplicate a Query

**Correct Answer:** ABC

**Section:** (none)

**Explanation**

**Explanation/Reference:**

Reference: <https://pubs.vmware.com/log-insight-30/index.jsp#com.vmware.log-insight.user.doc/GUID-0B168CCD-B387-4926-BC7F-39263D8F9CCE.html?resultof=%2522%2573%2565%2561%2572%2563%2568%2522%2520%2522%2571%2575%2565%2572%2569%2565%2573%2522%2520%2522%2571%2575%2565%2572%2569%2522%2520>

### QUESTION 23

A vSphere Administrator notices that the newly deployed ESXi hosts cannot stay in a connected state in vCenter Server for more than 60 seconds at a time. The Administrator knows that the hardware is in good health and that the ESXi hypervisors are properly configured.

What is the source of the problem?

- A. The hosts are not a part of a vSphere Distributed Switch.
- B. Firewall rules that have too many ports open.
- C. Firewall rules preventing hosts from sending heartbeats to vCenter Server.
- D. The hosts do not have persistent logging configured.

**Correct Answer:** C

**Section:** (none)

**Explanation**

**Explanation/Reference:**

Reference: [https://kb.vmware.com/selfservice/search.do?cmd=displayKC&docType=kc&docTypeID=DT\\_KB\\_1\\_1&externalId=1029919](https://kb.vmware.com/selfservice/search.do?cmd=displayKC&docType=kc&docTypeID=DT_KB_1_1&externalId=1029919)

### QUESTION 24

What is true about a virtual machine with (orphaned) appended to the display name?

- A. The virtual machine has been cloned and removed from vCenter Server's inventory.
- B. The template that the virtual machine was created from no longer exists.
- C. The virtual machine creator no longer wants the virtual machine and has marked it for deletion.
- D. The virtual machine exists in the vCenter Server database, but the ESXi hosts no longer recognize it.

**Correct Answer:** D

**Section:** (none)

**Explanation**

**Explanation/Reference:**

Reference: [https://pubs.vmware.com/vsphere-50/index.jsp?topic=%2Fcom.vmware.vsphere.troubleshooting.doc\\_50%2FGUID-BFD8C9BC-30FB-4A92-AFEC2FC9FF387920.html](https://pubs.vmware.com/vsphere-50/index.jsp?topic=%2Fcom.vmware.vsphere.troubleshooting.doc_50%2FGUID-BFD8C9BC-30FB-4A92-AFEC2FC9FF387920.html)

**QUESTION 25**

Which actions take place when DRS Automation is set to Partially Automated?

- A. Initial placement: Recommended host(s) is displayed.  
Migration: Recommendation is executed automatically.
- B. Initial placement: Automatic.  
Migration: Recommendation is displayed.
- C. Initial placement: Recommended host(s) is displayed. Migration: Recommendation is displayed.
- D. Initial placement: Automatic.  
Migration: Recommendation is executed automatically.

**Correct Answer: B**

**Section: (none)**

**Explanation**

**Explanation/Reference:**

Reference: <https://pubs.vmware.com/vsphere-51/index.jsp?topic=%2Fcom.vmware.vsphere.resmgmt.doc%2FGUID-E83A6B62-37F8-46D0-8D0AD6A9181979F2.html>

**QUESTION 26**

Which virtual switch load balancing method should be used when teaming network interfaces with EtherChannel?

- A. Route based on originating virtual port.
- B. Route based on IP hash.
- C. Route based on physical NIC load.
- D. Route based on source MAC hash.
- E. Use explicit failover order.

**Correct Answer: B**

**Section: (none)**

**Explanation**

**Explanation/Reference:**

Reference: <https://pubs.vmware.com/vsphere-60/index.jsp?topic=%2Fcom.vmware.vsphere.networking.doc%2FGUID-D34B1ADD-B8A7-43CD-AA7E2832A0F7EE76.html>

#### QUESTION 27

By default, how many login attempts will an ESXi host allow before locking out the account?

- A. 7
- B. 8
- C. 10
- D. 5

**Correct Answer:** C

**Section:** (none)

**Explanation**

**Explanation/Reference:**

Reference: <https://pubs.vmware.com/vsphere-60/index.jsp?topic=%2Fcom.vmware.vsphere.security.doc%2FGUID-DC96FFDB-F5F2-43EC-8C7305ACDAE6BE43.html>

#### QUESTION 28

VMware vRealize Log Insight can be configured to send notification events to which endpoint?

- A. vRealize Infrastructure Navigator
- B. vRealize Configuration Manager
- C. vRealize Operations Manager
- D. vCenter Server

**Correct Answer:** C

**Section:** (none)

**Explanation**

**Explanation/Reference:**

Reference: <https://pubs.vmware.com/log-insight-40/index.jsp?topic=%2Fcom.vmware.log-insight.administration.doc%2FGUID-C73DFC4F-53A6-4F6A-9883A4916AD3AA80.html>

#### QUESTION 29

Which three actions are available in Troubleshooting Mode in the ESXi Direct Console User Interface (DCUI)? (Choose three.)

- A. Enable ESXi Shell.

- B. Modify DCUI idle timeout.
- C. Modify Password.
- D. Restart Management Network.
- E. Modify SSH timeout.

**Correct Answer:** ABE

**Section:** (none)

**Explanation**

**Explanation/Reference:**

#### QUESTION 30

Which are two requirements for vMotion without shared storage? (Choose two.)

- A. The source host must have access to the destination storage.
- B. The hosts must be licensed with vSphere Enterprise Plus.
- C. The destination host must have access to any RDM LUNs.
- D. The source and destination hosts must have identical CPUs.
- E. Hosts must be running vSphere 5.1 or later.

**Correct Answer:** CE

**Section:** (none)

**Explanation**

**Explanation/Reference:**

Reference: <https://pubs.vmware.com/vsphere-51/index.jsp?topic=%2Fcom.vmware.vsphere.vcenterhost.doc%2FGUID-9F1D4A3B-3392-46A3-872073CBFA000A3C.html>

#### QUESTION 31

When a vSphere Administrator powers on a VM with the following configuration, what will be the resulting swap file size?

▼  *Memory			
RAM (*)	4	▼	GB ▼
Reservation (*)	2	▼	GB ▼
	<input type="checkbox"/> Reserve all guest memory (All locked)		
Limit (*)	3	▼	GB ▼
Shares	Normal	▼	40960 ▼

- A. 4 GB
- B. 2 GB
- C. 3 GB
- D. 1 GB



**Correct Answer:** B

**Section:** (none)

**Explanation**

**Explanation/Reference:**

### QUESTION 32

Which virtual SCSI controller would be recommended when deploying a Windows Server 2012 R2 VM that will host a database server which is expected to generate high I/O?

- A. LSI Logic
- B. PVSCSI
- C. LSI Logic SAS
- D. BusLogic

**Correct Answer:** B



**Section: (none)**

**Explanation**

**Explanation/Reference:**

Reference: <http://www.vmware.com/content/dam/digitalmarketing/vmware/en/pdf/solutions/sql-server-on-vmware-best-practices-guide.pdf>

**QUESTION 33**

A Primary Fault Tolerant VM is performing poorly despite its ESXi host having adequate resources and CPUs are idle. Other hosts in the cluster are much more heavily utilized.

What is the cause?

- A. The Secondary VM is assigned to a different portgroup than the Primary.
- B. The Secondary VM is running more applications than the Primary.
- C. The Secondary VM is running on an ESXi host that is overcommitted.
- D. The vMotion network has not been configured for Jumbo Frames.

**Correct Answer: C**

**Section: (none)**

**Explanation**

**Explanation/Reference:**



**QUESTION 34**

What is the VMware recommended way to distribute storage I/O loads across multiple paths to minimize downtime and remove potential bottlenecks?



<https://vceplus.com/>

- A. Enable Storage I/O Control.
- B. Configure storage replication.

- C. Configure multipathing.
- D. Enable storage DRS and configure datastore clusters.

**Correct Answer:** C

**Section:** (none)

**Explanation**

**Explanation/Reference:**

### QUESTION 35

A VMware vSphere 6.x Administrator is implementing a new eight-node cluster for business critical applications. Each server will be configured with two 10 GbE network adapters and will utilize iSCSI for storage on one subnet.

Which feature is required to implement this solution?

- A. Storage DRS
- B. LACP
- C. Network I/O Control
- D. VMkernel Port Binding



**Correct Answer:** D

**Section:** (none)

**Explanation**

**Explanation/Reference:**

### QUESTION 36

What is the maximum supported RAM per virtual machine (VM) in vSphere 6.5?

- A. 6128 GB
- B. 2048 GB
- C. 8192 GB
- D. 4096 GB

**Correct Answer:** A

**Section:** (none)

**Explanation**

**Explanation/Reference:**

Reference: <https://www.vmware.com/pdf/vsphere6/r65/vsphere-65-configuration-maximums.pdf> (page 9)

**QUESTION 37**

Which two options can change the thin provisioned disk to thick provisioned? (Choose two.)

- A. Use vMotion to migrate the VM to another ESXi host without moving the disks.
- B. Use Storage vMotion of the running VM to the same datastore and select Thick Provision.
- C. Power off the VM, locate the VMDK disk in the Datastore browser, right-click that and select Inflate.
- D. Use Storage vMotion of the running VM to another datastore and select Thick Provision.

**Correct Answer:** CD

**Section:** (none)

**Explanation**

**Explanation/Reference:**

Reference [https://pubs.vmware.com/vsphere-65/index.jsp?topic=%2Fcom.vmware.vsphere.vm\\_admin.doc%2FGUID-E8F50BEC-F575-4AB1-BC77-D9A13CDBDCF7.html](https://pubs.vmware.com/vsphere-65/index.jsp?topic=%2Fcom.vmware.vsphere.vm_admin.doc%2FGUID-E8F50BEC-F575-4AB1-BC77-D9A13CDBDCF7.html)

**QUESTION 38**

What two scenarios will prevent extending a VMDK that is attached to a powered on VM? (Choose two.)

- A. VMDK has snapshots present.
- B. VMDK is connected using LSI logic SAS controller.
- C. VMDK is connected using IDE controller.
- D. VMDK is running an unsupported Guest OS.

**Correct Answer:** AD

**Section:** (none)

**Explanation**

**Explanation/Reference:**

Reference: <https://kb.vmware.com/s/article/1004071>

**QUESTION 39**

ESXi supports which three iSCSI adapters? (Choose three.)

- A. Software
- B. Protocol Endpoint

- C. FCoE
- D. Dependent Hardware
- E. Independent Hardware

**Correct Answer:** ADE

**Section:** (none)

**Explanation**

**Explanation/Reference:**

Reference: <https://docs.vmware.com/en/VMware-vSphere/5.5/com.vmware.vsphere.storage.doc/GUID-C476065E-C02F-47FA-A5F7-3B3F2FD40EA8.html>

#### QUESTION 40

What two virtual hardware devices can be added to a powered on VM? (Choose two.)

- A. Virtual disk connected using SCSI controller
- B. Virtual disk connected using IDE controller
- C. Network adapter
- D. Serial Port

**Correct Answer:** AC

**Section:** (none)

**Explanation**

**Explanation/Reference:**

Reference: [https://pubs.vmware.com/vsphere-4-esx-vcenter/index.jsp#com.vmware.vsphere.webaccess.doc\\_41/adding\\_hardware\\_to\\_a\\_virtual\\_machine/t\\_add\\_a\\_network\\_adapter.html](https://pubs.vmware.com/vsphere-4-esx-vcenter/index.jsp#com.vmware.vsphere.webaccess.doc_41/adding_hardware_to_a_virtual_machine/t_add_a_network_adapter.html)

#### QUESTION 41

Which three options are available when applying a Customization Specification to an existing virtual machine? (Choose three.)

- A. Modify a specification
- B. Select an existing specification
- C. Import a specification
- D. Create a specification from an existing specification
- E. Create a specification

**Correct Answer:** BDE



**Section: (none)**

**Explanation**

**Explanation/Reference:**

Reference: [https://docs.vmware.com/en/VMware-vSphere/6.5/com.vmware.vsphere.vm\\_admin.doc/GUID-EB5F090E-723C-4470-B640-50B35D1EC016.html](https://docs.vmware.com/en/VMware-vSphere/6.5/com.vmware.vsphere.vm_admin.doc/GUID-EB5F090E-723C-4470-B640-50B35D1EC016.html)

**QUESTION 42**

A VMware vSphere 6.x Administrator is tasked with configuring vRealize Log Insight.

What three ports can be used for syslog? (Choose three.)

- A. 514/UDP
- B. 1514/TCP
- C. 8443/TCP
- D. 514/TCP
- E. 123/UDP

**Correct Answer: ABD**

**Section: (none)**

**Explanation**



**Explanation/Reference:**

Reference: <https://pubs.vmware.com/log-insight-43/index.jsp?topic=%2Fcom.vmware.log-insight.administration.doc%2FGUID-848E4804-3837-4D5E-956E2216B17376AD.html>

**QUESTION 43**

Which key combination will let a vSphere Administrator revert to the previous version or build of ESXi?

- A. Shift+R
- B. Ctrl+R
- C. Shift+V
- D. Ctrl+Z

**Correct Answer: A**

**Section: (none)**

**Explanation**

**Explanation/Reference:**

Reference: <https://kb.vmware.com/s/article/1033604>

**QUESTION 44**

A vSphere Administrator notices that upgrading VMware Tools on a single VM fails. Upon closer inspection, the summary tab shows that the VMware Tools status is unmanaged.

What is true about this virtual machine?

- A. There are not any vSphere users that have permissions for the virtual machine.
- B. The VMware Tools are so old that ESXi fails to upgrade the tools.
- C. The VMware Tools were installed with non-default options chosen.
- D. The VMware tools installed is an Operating System specific Package (OSP).

**Correct Answer:** D

**Section:** (none)

**Explanation**

**Explanation/Reference:**

Reference: <https://www.slideshare.net/RamPrasadOhnu/vmware-toolsinstallationconfiguration>

**QUESTION 45**

Which password meets the default password requirements in ESXi 6.x?

- A. Xqavntthi3
- B. xQA!3h C. xTaMEhb!
- D. Xqa\_hin3

**Correct Answer:** C

**Section:** (none)

**Explanation**

**Explanation/Reference:**

**QUESTION 46**

Which two statements are true when configuring a virtual flash resources (vFlash)? (Choose two.)

- A. Virtual Machines cannot reside on the virtual flash resource.
- B. Only Shared Storage can be configured as a virtual flash resource.
- C. vSphere DRS does not support vFlash resources.

D. vFlash resources are managed at the ESXi host level.

**Correct Answer:** AD

**Section:** (none)

**Explanation**

**Explanation/Reference:**

#### QUESTION 47

When adding a new VLAN to an existing virtual distributed switch, which three steps are necessary? (Choose three.)

- A. Right click the vDS and select Distributed Port Group, then select New Distributed Port Group.
- B. Right click on the data center, select Distributed Switch, select New Distributed Switch.
- C. Specify the VLAN ID and VLAN type.
- D. Provide a name for the Distributed Port Group.
- E. Specify the number of physical uplinks from the vDS to the VLAN.

**Correct Answer:** ACD

**Section:** (none)

**Explanation**

**Explanation/Reference:**



#### QUESTION 48

What is the maximum supporter number of vCPU per VM in VMware vSphere 6.5?

- A. 256
- B. 128
- C. 32
- D. 64

**Correct Answer:** B

**Section:** (none)

**Explanation**

**Explanation/Reference:**

Reference: <https://www.vmware.com/pdf/vsphere6/r65/vsphere-65-configuration-maximums.pdf>

**QUESTION 49**

Which is a valid requirement for deploying the vCenter Server Appliance 6.x to a DRS cluster?

- A. One ESXi host in the cluster must not be in maintenance mode or lockdown mode.
- B. At least one host in the cluster must not be in maintenance mode or lockdown mode.
- C. One ESXi host in the cluster must not be in lockdown mode.
- D. All ESXi hosts in the cluster must not be in maintenance mode.

**Correct Answer:** B

**Section:** (none)

**Explanation**

**Explanation/Reference:**

Reference: <https://docs.vmware.com/en/VMware-vSphere/6.0/com.vmware.vsphere.install.doc/GUID-E278E0F2-8983-4246-9903-50C4022F1273.html>

**QUESTION 50**

An ESXi host has limited network connectivity.

What three troubleshooting steps can a vSphere Administrator take? (Choose three.)



<https://vceplus.com/>

- A. Verify that all NICs are configured to support the promiscuous mode.
- B. Verify that portfast (or equivalent) is enabled on all the physical switch ports that the ESXi host is connected to.
- C. Verify that the speed and duplex of the network links are consistent.
- D. Use ESXCLI to verify that the virtual switch NIC teaming is properly set.
- E. Verify that all NICs connected to the same ToR switch are part of the same LAG.

**Correct Answer:** BCD



**Section: (none)**

**Explanation**

**Explanation/Reference:**

Reference: <https://kb.vmware.com/s/article/1004109>

**QUESTION 51**

What are two uses of the vRealize Log Insight Agents for Windows and Linux? (Choose two.)

- A. Monitor the state of syslog/eventmgr services
- B. Collect events from flat test files
- C. Control the state of the syslog/eventmgr services
- D. Monitor directories with the filesystem

**Correct Answer: AB**

**Section: (none)**

**Explanation**

**Explanation/Reference:**

Reference: <https://www.altaro.com/vmware/how-to-set-up-vrealize-log-insight-agents-on-windows-and-linux/>

**QUESTION 52**

After enabling iSCSI port binding on ESXi hosts, a vSphere Administrator can no longer reach an iSCSI Array Target from the configured software iSCSI initiators. Which can be the root cause for the failure?

- A. All VMkernel ports used for iSCSI connectivity reside in the same broadcast domain and IP subnet.
- B. LACP other link aggregation was used on the ESXi hosts uplinks to connect to the physical switches.
- C. All VMkernel ports used for iSCSI connectivity reside in the same vSwitch.
- D. Array Target iSCSI ports reside in the same broadcast domain and IP subnet as the VMkernel ports.

**Correct Answer: B**

**Section: (none)**

**Explanation**

**Explanation/Reference:**

**QUESTION 53**

One of your virtual machines (VM) has performance issues and sometimes is unresponsive.

Which VM file must be checked in order to find the root cause?

- A. vpxd.log
- B. ds.log
- C. vminst.log
- D. vmware.log

**Correct Answer:** C

**Section:** (none)

**Explanation**

**Explanation/Reference:**

#### QUESTION 54

ESXi 6.x can be installed upon which three supported hardware configurations? (Choose three.)

- A. Local disk connected through Serial ATA (SATA)
- B. Intel NX/XD disabled for the CPU in the system BIOS
- C. 1 GbE network adapter
- D. 2 GB of physical RAM
- E. Intel NX/XD enabled for the CPU in the system BIOS



**Correct Answer:** ACE

**Section:** (none)

**Explanation**

**Explanation/Reference:**

Reference: <https://docs.vmware.com/en/VMware-vSphere/6.0/com.vmware.vsphere.install.doc/GUID-DEB8086A-306B-4239-BF76-E354679202FC.html>

#### QUESTION 55

A vSphere Administrator has stated that currently Private VLAN is utilized to prevent cross-talk on the dedicated backup network.

What two actions are required to implement Private VLAN in VMware vSphere? (Choose two.)

- A. Configure Private VLAN at the dvPort Group.
- B. Upgrade to VMware vSphere Enterprise Plus.
- C. Enable Promiscuous Mode.
- D. Configure Private VLAN at the dvSwitch level.

**Correct Answer:** AC

**Section:** (none)

**Explanation**

**Explanation/Reference:**

**QUESTION 56**

What are two valid states for Compliance Status in VM Storage Policy? (Choose two.)

- A. Compliant
- B. Orphaned
- C. Invalid
- D. Out of Date

**Correct Answer:** AD

**Section:** (none)

**Explanation**

**Explanation/Reference:**

Reference: <https://docs.vmware.com/en/VMware-vSphere/6.5/com.vmware.vsphere.storage.doc/GUID-133B65D0-CE10-45E7-BFA5-74CAD19E0DFD.html>

**QUESTION 57**

A VMware vSphere 6.x Administrator is looking at the following output from esxtop on an ESXi host:

2:24:33pm up 35 days 14:18, 819 worlds, 11 VMs, 28 vCPUs; CPU load average: 0.07, 0.07, 0.07

ADAPTR PATH	NPTH	CMDS/s	READS/s	WRITES/s	MBREADS/s	MBWRTN/s	DAVG/cmd	KAVG/cmd	GAVG/cmd	QAVG/cmd
vmhba0 -	0	0.00	0.00	0.00	0.00	0.00	0.00	0.00	0.00	0.00
vmhba1 -	0	0.00	0.00	0.00	0.00	0.00	0.00	0.00	0.00	0.00
vmhba2 -	1	0.19	0.00	0.19	0.00	0.00	22.70	0.03	22.73	0.00
vmhba3 -	0	0.00	0.00	0.00	0.00	0.00	0.00	0.00	0.00	0.00
vmhba32 -	1	0.00	0.00	0.00	0.00	0.00	0.00	0.00	0.00	0.00
vmhba33 -	0	0.00	0.00	0.00	0.00	0.00	0.00	0.00	0.00	0.00
vmhba34 -	0	0.00	0.00	0.00	0.00	0.00	0.00	0.00	0.00	0.00
vmhba35 -	0	0.00	0.00	0.00	0.00	0.00	0.00	0.00	0.00	0.00
vmhba36 -	0	0.00	0.00	0.00	0.00	0.00	0.00	0.00	0.00	0.00
vmhba37 -	0	0.00	0.00	0.00	0.00	0.00	0.00	0.00	0.00	0.00
vmhba38 -	0	0.00	0.00	0.00	0.00	0.00	0.00	0.00	0.00	0.00
vmhba39 -	0	0.00	0.00	0.00	0.00	0.00	0.00	0.00	0.00	0.00
vmhba4 -	0	0.00	0.00	0.00	0.00	0.00	0.00	0.00	0.00	0.00
vmhba40 -	0	0.00	0.00	0.00	0.00	0.00	0.00	0.00	0.00	0.00
vmhba41 -	0	0.00	0.00	0.00	0.00	0.00	0.00	0.00	0.00	0.00

What does DAVG/cmd represent?

- A. Average device latency per command in milliseconds
- B. Average ESXi VMkernel latency per command in milliseconds
- C. Average queue latency per command in milliseconds
- D. Average guest operating system latency per command in milliseconds.

**Correct Answer:** A

**Section:** (none)

**Explanation**

**Explanation/Reference:**

Reference: [http://www.yellow-bricks.com/esxtop/](http://www.yellow-bricks.com/esxstop/)

### QUESTION 58

Which two statements are Datastore Cluster requirements? (Choose two.)

- A. Datastore clusters can only contain VMFS datastores.
- B. Datastores shared across multiple data centers cannot be included in a datastore cluster.

- C. NFS and VMFS datastores cannot be combined in the same datastore cluster.
- D. Datastore clusters must contain three or more datastores.

**Correct Answer:** BC

**Section:** (none)

**Explanation**

**Explanation/Reference:**

Reference: <https://pubs.vmware.com/vsphere-51/index.jsp?topic=%2Fcom.vmware.vsphere.resmgmt.doc%2FGUID-34A10B42-C79E-491C-A5AA99E3B5FA2278.html>

### QUESTION 59

A vSphere Administrator just finished installing new software on the Windows vCenter Server and notices that vCenter Server services no longer start properly.

What two tasks should be done next? (Choose two.)

- A. Contact the server hardware manufacturer.
- B. Check for network port conflicts.
- C. Reinstall vCenter Server.
- D. Check the vCenter Server logs.



**Correct Answer:** BD

**Section:** (none)

**Explanation**

**Explanation/Reference:**

### QUESTION 60

A vSphere Administrator wants to enable Storage I/O Control. There is a mix of VMFS and NFS datastores. All of the VMFS datastores have hardware acceleration enabled. The Administrator attempts to create a new datastore cluster but is unable to add all of the datastores to the cluster.

What is the problem?

- A. NFS datastores cannot participate in a datastore cluster.
- B. One of the hosts is currently in maintenance mode.
- C. NFS and VMFS datastores cannot be mixed in a datastore cluster.
- D. Datastores with hardware acceleration enabled cannot participate in a datastore cluster.

**Correct Answer:** C

**Section:** (none)

**Explanation**

**Explanation/Reference:**

Reference: <https://docs.vmware.com/en/VMware-vSphere/6.5/com.vmware.vsphere.resmgmt.doc/GUID-34A10B42-C79E-491C-A5AA-99E3B5FA2278.html>

#### **QUESTION 61**

You need to add an object to an existing vApp using the vSphere Web Client. How is this accomplished?

- A. Create an Object Inside the vApp.
- B. Add an Object to a vApp.
- C. Add an Object to the Datastore the vApp is located in.
- D. Move all Objects to a new Datastore folder.

**Correct Answer:** AB

**Section:** (none)

**Explanation**

**Explanation/Reference:**

Explanation:

to add an object to an existing vApp using the vsphere web client, create an object inside vApp or you can add an object to a vApp.

[https://pubs.vmware.com/vsphere-50/index.jsp?topic=%2Fcom.vmware.vsphere.vm\\_admin.doc\\_50%2FGUID-12FDA1A4-6214-463B-8D73-FE25454C642E.html](https://pubs.vmware.com/vsphere-50/index.jsp?topic=%2Fcom.vmware.vsphere.vm_admin.doc_50%2FGUID-12FDA1A4-6214-463B-8D73-FE25454C642E.html)

#### **QUESTION 62**

Which three items should be validated prior to installing ESXi 6.x? (Choose three.)

- A. Remote Storage has been disconnected.
- B. Installation media is available.
- C. Server hardware clock is set to UTC.
- D. Storage has been partitioned with a VMFS volume.
- E. Network cards have been setup to use Jumbo Frames.

**Correct Answer:** ABC

**Section:** (none)

**Explanation**

**Explanation/Reference:**



**QUESTION 63**

Which two badges are major badges in vRealize Operations? (Choose two.)

- A. Risk
- B. Efficiency
- C. Workload
- D. Faults

**Correct Answer:** AB

**Section:** (none)

**Explanation**

**Explanation/Reference:**

**QUESTION 64**

Which Single Sign-On deployment mode should an administrator use for two 6.x vCenter Servers configured with linked mode?

- A. Basic Single Sign-On with vCenter Server Heartbeat
- B. Multisite Single Sign-On
- C. Basic Single Sign-On
- D. Single Sign-On with Linked Mode



**Correct Answer:** B

**Section:** (none)

**Explanation**

**Explanation/Reference:**

**QUESTION 65**

Refer to the Exhibit.

An administrator has been given requirements to configure vMotion for a new virtual machine. The configuration should:

Provide Network Redundancy

Use VLAN 550

Be secured against anyone trying to spoof communication

The vSwitch1 configuration is shown in the Exhibit.

vmotion

All

Properties

Policies

Properties

Network label

vmotion

VLAN ID

None (0)

Security

Promiscuous mode

Reject

MAC address changes

Accept

Forged transmits

Accept

Traffic shaping

Average bandwidth

--

Peak bandwidth

--

Burst size

--

Teaming and failover

Load balancing

Route based on originating virtual port

Network failure detection

Link status only

Notify switches

Yes

Failback

Yes

Active adapters

vmnic3

Standby adapters

--

Unused adapters

vmnic2



Which three changes should be made to meet the stated requirements? (Choose three.)

- A. The VLAN ID must be set appropriately.
- B. The default values for MAC Address Changes and Forged Transmits must be altered.
- C. The teaming and failover adapters must be set appropriately.
- D. The Traffic Shaping configuration must be altered.
- E. The Load Balancing Policy must be set appropriately.

**Correct Answer:** ABC

**Section:** (none)

**Explanation**

**Explanation/Reference:**

#### QUESTION 66

An administrator is troubleshooting basic network connectivity issues.

Which two scenarios are potential issues that this administrator might face? (Choose two.)

- A. The vSwitch is not attached to the correct physical network.
- B. The portgroup is not configured to use correct VLAN.
- C. Traffic shaping is configured incorrectly.
- D. Jumbo frames is configured incorrectly.

**Correct Answer:** AB

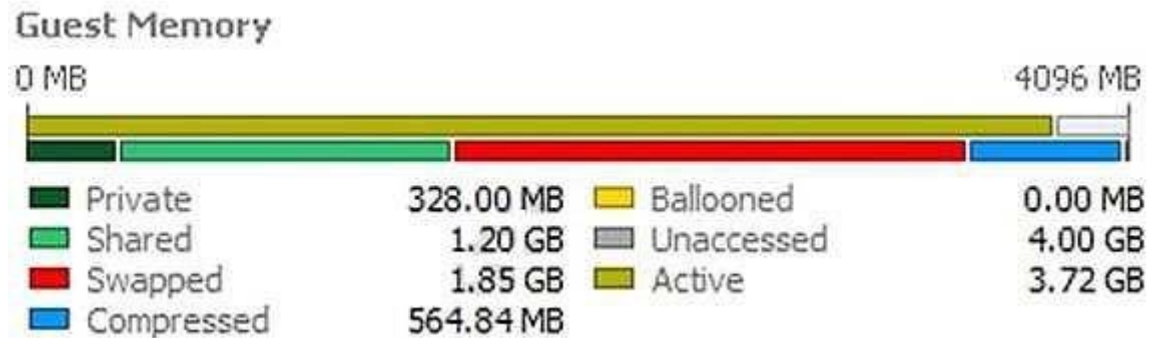
**Section:** (none)

**Explanation**

**Explanation/Reference:**

#### QUESTION 67

Refer to the Exhibit. A 4 GB Memory virtual machine is experiencing extended memory issues, as shown in the Exhibit.



What potential issues could be attributed to this memory pressure?

- A. A limit is imposed on the virtual memory of this virtual machine.
- B. The Balloon driver has been uninstalled.
- C. A limit has been imposed on the Virtual CPU of the virtual machine.
- D. Storage IO control has been enabled for the virtual machine causing the swapped memory.

**Correct Answer:** AB

**Section:** (none)

**Explanation**

**Explanation/Reference:**

Explanation:

One of the issue might be that the limit is imposed on the virtual memory of this VM. Secondly, the balloon driver has been uninstalled. That's why it is experiencing memory issues.

#### QUESTION 68

What is the optimal configuration when building a virtual machine for a single-threaded Windows application?

- A. Deploy single-threaded applications on uniprocessor virtual machines.
- B. Deploy single-threaded applications on symmetric multi-processor virtual machines.
- C. Tune single-threaded applications to take advantage of symmetric multi-processor resources.
- D. Tune Single-threaded applications at the hypervisor level.

**Correct Answer:** A

**Section:** (none)

**Explanation**

**Explanation/Reference:**

#### **QUESTION 69**

An administrator has just completed performing an interactive installation of ESXi 6.x and is booting the host. How is the network initially configured?

- A. The network is configured by Automatic Private IP Addressing (APIPA).
- B. The network is configured based on the settings detected in DNS.
- C. The network is configured with the address as specified in the installer.
- D. The network is automatically configured by DHCP.

**Correct Answer:** D

**Section:** (none)

**Explanation**

**Explanation/Reference:**



#### **QUESTION 70**

What must be enabled to ensure that VM Component Protection (VMCP) works in a High Availability cluster?

- A. VMware Tools Virtual Machine Communication Interface (VMCI)
- B. Fault Tolerance
- C. Atomic Test and Set (ATS)
- D. All Paths Down (APD) Timeout

**Correct Answer:** D

**Section:** (none)

**Explanation**

**Explanation/Reference:**

Reference: <https://docs.vmware.com/en/VMware-vSphere/6.0/com.vmware.vsphere.avail.doc/GUID-F01F7EB8-FF9D-45E2-A093-5F56A788D027.html>

#### **QUESTION 71**

A virtual machine is experiencing performance issues.

The following performance metrics are observed:

- CPU usage value for the virtual machine is above 90%
- CPU ready value for the virtual machine is above 20%

Which two activities will likely resolve the performance issues? (Choose two.)

- A. Set a CPU reservation for the virtual machine.
- B. Increase the CPU limit on the virtual machine.
- C. Decrease CPU shares equally for all virtual machines on the host.
- D. Increase CPU shares equally for all virtual machines on the host.

**Correct Answer:** AB

**Section:** (none)

**Explanation**

**Explanation/Reference:**



#### QUESTION 72

A vApp named Sales has a Memory Limit of 32 GB and a CPU Limit of 12,000 MHz.

There are three virtual machines within the vApp:

Sales-DB -- Has a memory reservation of 20 GB. Sales-DC -- Has a memory reservation of 8 GB. Sales-Web -- Has a memory reservation of 8 GB.

Which statement is correct?



<https://vceplus.com/>

- A. All three virtual machines can power on, but will have memory contention.
- B. All three virtual machines can power on without memory contention.
- C. Only two of the three virtual machines can power on.
- D. Only one of the virtual machines can power on.

**Correct Answer:** C

**Section:** (none)

**Explanation**

**Explanation/Reference:**

#### QUESTION 73

Which two configurable options apply to both virtual machine CPU and memory allocation? (Choose two.)

- A. Reservation
- B. Shares
- C. Resource Pool
- D. Reserve All



**Correct Answer:** AB

**Section:** (none)

**Explanation**

**Explanation/Reference:**

#### QUESTION 74

Which vSphere 6.x feature will allow an organization to utilize native snapshots?

- A. Virtual Volumes
- B. Virtual SAN
- C. VMFS3
- D. VMFS5

**Correct Answer:** A

**Section:** (none)

**Explanation**

**Explanation/Reference:**

#### QUESTION 75

An administrator is tasked with performing a vMotion migration of a virtual machine.

The virtual machine is configured as follows:

- vSphere Flash Read Cache (vFRC) enabled
- Is part of a Distributed Resource Cluster (DRS) Cluster

Which two statements are true? (Choose two.)

- A. Each ESXi host in the cluster supports multiple virtual flash resources.
- B. Each ESXi host in the cluster supports one virtual flash resource.
- C. DRS treats powered-on virtual machines with Flash Read Cache as having a preferred affinity to their current host and moves them only for mandatory reasons.
- D. DRS treats powered-on virtual machines with Flash Read Cache as having a required affinity to their current host and does not move them.

**Correct Answer:** BC

**Section:** (none)

**Explanation**

**Explanation/Reference:**

#### QUESTION 76

The vSphere administrator attempts to connect to an ESXi host via an SSH client and receives the following security alert:



The vSphere administrator needs to determine whether the RSA key fingerprint shown in the security alert is the fingerprint of the intended ESXi host.

Which tool should the vSphere administrator use?

- A. Direct Console User Interface
- B. vSphere Client
- C. vSphere Web Client
- D. vSphere Management Assistant

**Correct Answer:** A

**Section:** (none)

**Explanation**

**Explanation/Reference:**

#### QUESTION 77

An administrator deploys vCenter Server using the embedded Platform Services Controller.

After testing the deployment for a couple of months, it is determined that the environment would be better served with an external Platform Services Controller.

What should the administrator do to meet this new requirement?

- A. Deploy a fresh instance of vCenter Server with an external Platform Services Controller.
- B. Perform a fresh install of an external Platform Services Controller.
- C. Migrate the embedded Platform Services Controller to an external Platform Services Controller.
- D. Upgrade the embedded Platform Services Controller to an external Platform Services Controller.

**Correct Answer:** A

**Section:** (none)

**Explanation**

**Explanation/Reference:**

#### **QUESTION 78**

What happens to the status of users already logged into ESXi Shell when a vSphere administrator enables lockdown mode?

- A. Users remain logged in and can run commands, except to disable lockdown mode.
- B. Users remain logged in and can run commands, including disabling lockdown mode.
- C. Users are immediately logged out of ESXi Shell.
- D. Users are logged out after a timeout specified by the vSphere administrator.

**Correct Answer:** A

**Section:** (none)

**Explanation**

**Explanation/Reference:**

#### **QUESTION 79**

During an upgrade, the ESXi 6.x installer finds an existing version of ESXi and a VMFS3 volume. No virtual machines exist on the host or VMFS3 volume. The requirement is to upgrade to VMFS5.

Which option should be chosen to meet this requirement?

- A. Upgrade ESXi and preserve the VMFS datastore
- B. Install ESXi and preserve the VMFS datastore
- C. Install ESXi and overwrite the VMFS datastore
- D. Upgrade ESXi and overwrite the VMFS datastore



**Correct Answer:** C

**Section:** (none)

**Explanation**

**Explanation/Reference:**

#### **QUESTION 80**

An administrator has unsuccessfully attempted several times to install an Operating System inside a virtual machine. The administrator finds that the installation fails at random intervals.

Which two actions can be taken to resolve this issue? (Choose two.)

- A. Verify the md5sum and if invalid, download the installation files again.
- B. Attempt the installation an additional time.
- C. Attempt to use a different installation media or installation method.
- D. Create a new virtual machine and attempt the installation with the existing media.

**Correct Answer:** AC

**Section:** (none)

**Explanation**

**Explanation/Reference:**



#### **QUESTION 81**

Refer to the Exhibit. A storage administrator has reported that full utilization of all bandwidth from an ESXi 6.x host is not being seen. In troubleshooting the issue, the Adapter details are shown in the Exhibit.

## Adapter Details

Properties   Devices   Paths			
<input type="button" value="Enable"/> <input type="button" value="Disable"/>			
Runtime Name	Target	LUN	Status
vmhba2:C0:T3:L0	50:06:01:60:c7:20:6a:a4 50:06:0...	0	◆ Active (I/O)
vmhba2:C0:T2:L0	50:06:01:60:c7:20:6a:a4 50:06:0...	0	◆ Active (I/O)
vmhba2:C0:T1:L0	50:06:01:60:c7:20:6a:a4 50:06:0...	0	◇ Disabled
vmhba2:C0:T0:L0	50:06:01:60:c7:20:6a:a4 50:06:0...	0	◆ Active

Based on the exhibit, what is cause of the issue?

- A. The array is not setup to use the correct multipathing policy.
- B. There are no virtual machines on the ESXi host.
- C. Not all links are used because a path is disabled.
- D. Another path needs to be configured.



**Correct Answer: C**

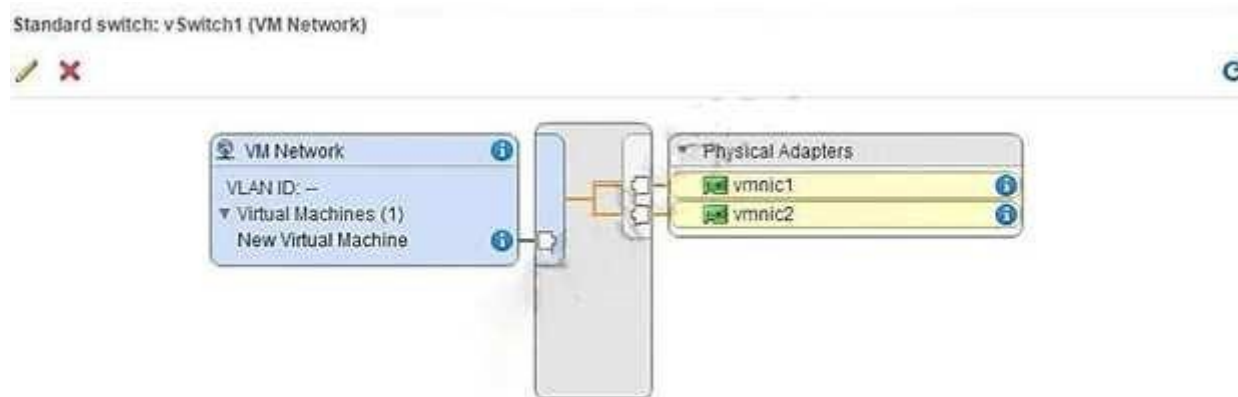
**Section: (none)**

**Explanation**

**Explanation/Reference:**

## QUESTION 82

Refer to the Exhibit. An administrator has configured network connectivity for a new virtual machine, as shown in the Exhibit.



What will occur with the network traffic of this virtual machine when communicating externally from vSwitch1?

- A. The virtual machine will communicate on both uplinks
- B. The virtual machine will only communicate on vmnic1
- C. The virtual machine will only communicate on vmnic2
- D. The virtual machine will fail to communicate externally

**Correct Answer: D**

**Section: (none)**

**Explanation**

**Explanation/Reference:**

### QUESTION 83

Refer to the Exhibit. An administrator is adding an NFS datastore as shown in the Exhibit.

New Datastore

1 Location

2 Type

3 Select NFS version

4 Name and configuration

5 Configure Kerberos authentication

6 Ready to complete

Datastore name: Datastore 1

NFS Share Details

Enter the NFS share details. If the server that will back this datastore has trunking enabled, below you can enter additional IPs, which the ESX will use to achieve multipathing to this NFS server mount point.

Folder: /bnt1

E.g: /datastore-001

Server(s):

E.g: nas, nas.it.com or 192.168.0.1

×

Filter

Servers to be added

10.21.16.253

10.21.16.252

2 items

If you intend to configure an existing datastore on new hosts in the datacenter, it is recommended to use the "Mount to additional hosts" action instead.

Access Mode

☐ Mount NFS as read-only

Back

Next

Finish

Cancel

What is the purpose of the Servers to be added list?

- A. It contains the IP addresses of the NFS Storage Server to provide multipathing capability.
- B. It contains the IP addresses of the ESXi hosts that mount the datastore.

[www.vceplus.com](http://www.vceplus.com) - VCE Exam Simulator - Download A+ VCE (latest) free Open VCE Exams - VCE to PDF Converter - PDF Online

- C. It contains the IP addresses used for Dynamic Discovery of targets.
- D. It contains the IP addresses used for Static Discovery of targets.

**Correct Answer:** A

**Section:** (none)

**Explanation**

**Explanation/Reference:**

#### **QUESTION 84**

Which two actions are prerequisites to adding ESXi 6.x hosts to a vSphere Distributed Switch? (Choose two.)

- A. Verify that there is at least one Distributed Port Group on the Distributed Switch.
- B. Verify that the Distributed Port Group have active uplinks configured in its teaming and failover policy.
- C. Verify that the Distributed Switch has been configured with a Network Profile.
- D. Verify that Network I/O control for Management Traffic is configured for the highest share value.

**Correct Answer:** AB

**Section:** (none)

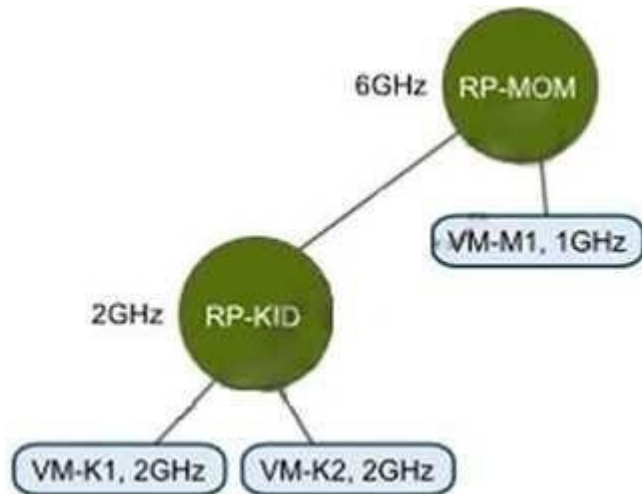
**Explanation**



**Explanation/Reference:**

#### **QUESTION 85**

Refer to the Exhibit. An administrator has created the resource pool configuration shown in the Exhibit.



Based on the exhibit, which virtual machine(s) can be successfully powered on?

- A. VM-M1 only
- B. VM-K1 only
- C. VM-K1 and VM-K2 only
- D. VM-K1, VM-K2, and VM-M1

**Correct Answer:** D

**Section:** (none)

**Explanation**

**Explanation/Reference:**

#### QUESTION 86

You are creating a virtual machine in the Web Client using the New Virtual Machine wizard.

Which two steps are required? (Choose two.)

- A. Select a valid name.
- B. Select a cluster for the compute resource.

- C. Select a network adapter.
- D. Select the virtual machine compatibility.

**Correct Answer:** AD

**Section:** (none)

**Explanation**

**Explanation/Reference:**

#### **QUESTION 87**

An administrator is migrating a virtual machine from a Test cluster to a Production cluster.

The two environments do not have any shared storage.

What is the easiest way to accomplish this task?

- A. Perform a Storage vMotion.
- B. Perform a regular vMotion.
- C. Perform a Virtual to Virtual migration.
- D. Perform a backup and restore using VMware Data Protection.



**Correct Answer:** B

**Section:** (none)

**Explanation**

**Explanation/Reference:**

#### **QUESTION 88**

A vSphere administrator has been using vSphere in evaluation mode and now wants to deploy an environment that provides the same features.

Which edition of vSphere provides similar functionality to evaluation mode?

- A. Enterprise Plus
- B. EnterpriseC. Standard
- D. Essentials

**Correct Answer:** A

**Section: (none)**

**Explanation**

**Explanation/Reference:**

**QUESTION 89**

An administrator creates an ESXi cluster using vSphere Auto Deploy. The ESXi hosts are configured to get a management IP address from a DHCP server. The administrator needs to troubleshoot the management network on one of the hosts. Which DCUI option should the administrator use to renew the DHCP lease?

- A. Restart Management Network
- B. Restore Network Settings
- C. Test Management Network
- D. Configure Management Network

**Correct Answer: A**

**Section: (none)**

**Explanation**

**Explanation/Reference:**



**QUESTION 90**

After selecting an object in vRealize Operations, how can a user compare the badge values of related child objects?

- A. Use the Scoreboard tab
- B. Use the Relationship tab
- C. Use the Members tab
- D. Use the Overview tab

**Correct Answer: A**

**Section: (none)**

**Explanation**

**Explanation/Reference:**

**QUESTION 91**

In order for a company to meet regulatory requirements, all ESXi 6.x Hosts must be configured to direct logs to a syslog server.



What are two ways ESXi hosts can configured for this action? (Choose two)

- A. Use the esxcli system syslog command.
- B. Edit them in the ESXi host Advanced System Settings.
- C. From the Syslog collector user interface of the Web Client.
- D. Syslog logging is not available for ESXi Hosts.

**Correct Answer:** AB

**Section:** (none)

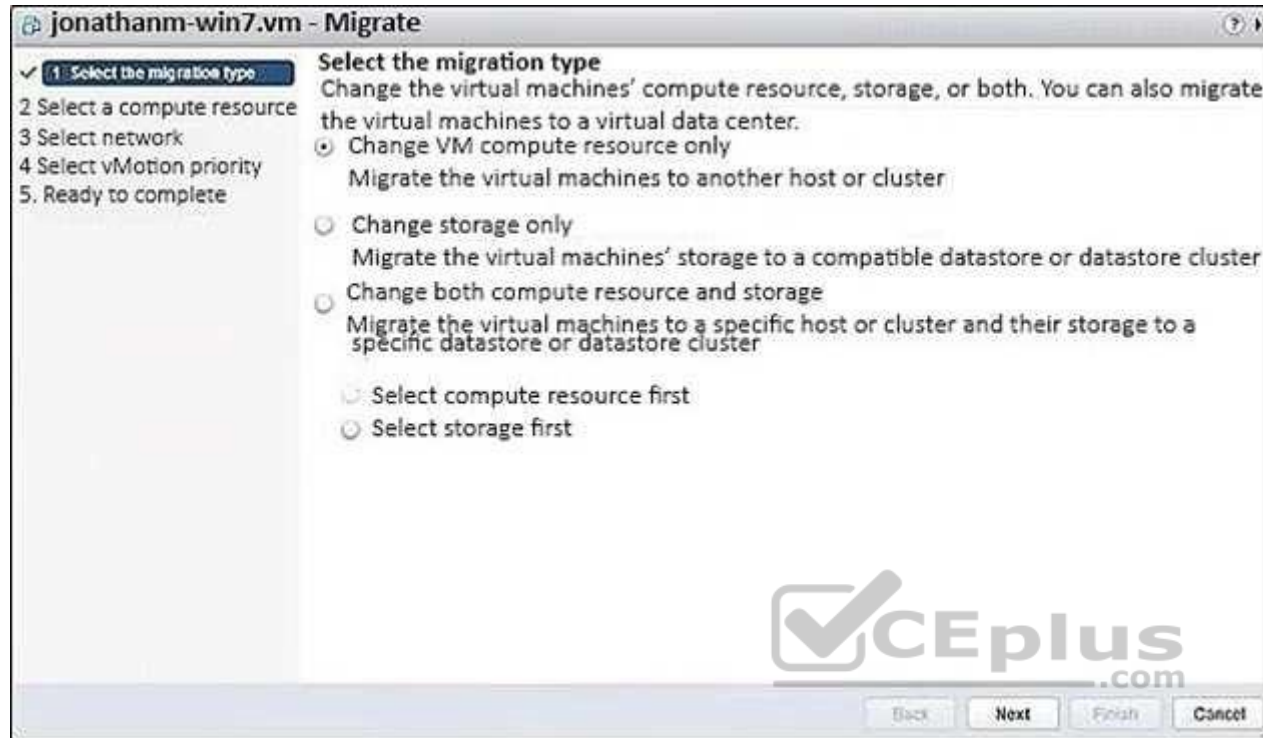
**Explanation**

**Explanation/Reference:**

#### **QUESTION 92**

Refer to the Exhibit. An administrator is migrating a powered-on virtual machine, as shown in the exhibit.





Which option should be selected to perform a Storage vMotion of the VM?

- A. Change storage only
- B. Change VM compute resource only
- C. Change both compute resource and storage, changing the compute resource first.
- D. Change both compute resource and storage, changing the storage resource first.

**Correct Answer:** A

**Section:** (none)

**Explanation**

**Explanation/Reference:**

**QUESTION 93**

An administrator has recently installed a new ESXi 6.x Host, and during the configuration notices sporadic network problems. To check whether the issue occurred sometime during the configuration, the administrator would like to reset the system.

How can this be accomplished in the shortest amount of time?

- A. Run the ESXi installer again and reinstall the host.
- B. Select the Reset System Configuration option from the vSphere Client when connected directly to the host.
- C. From the Direct Console User Interface, select Reset System Configuration.
- D. Use a host profile to reset the configuration to a default state.

**Correct Answer:** C

**Section:** (none)

**Explanation**

**Explanation/Reference:**

#### QUESTION 94

vSphere Update Manager allows which two virtual machine attributes to be upgraded? (Choose two.)

- A. Virtual machine firewall policies for NSX.
- B. Software Packages in the virtual machine.
- C. Virtual machine Hardware Version.
- D. VMware Tools Upgrade.

**Correct Answer:** CD

**Section:** (none)

**Explanation**

**Explanation/Reference:**

#### QUESTION 95

What are two benefits of using NFS 4.1 with vSphere 6.x as compared to NFS 3? (Choose two.)

- A. NFS 4.1 supports Kerberos Authentication
- B. NFS 4.1 supports multipathing
- C. NFS 4.1 supports IPv6

D. NFS 4.1 supports hardware acceleration

**Correct Answer:** AB

**Section:** (none)

**Explanation**

**Explanation/Reference:**

#### QUESTION 96

An administrator is monitoring a High Availability (HA) and Distributed Resource Scheduler (DRS) enabled cluster and has noticed that virtual machines in the cluster are being migrated without user intervention.

Why is this happening?



<https://vceplus.com/>

- A. The DRS Automation level is set to Fully Automated.
- B. The Automation level is set to Automatic.
- C. The DPM Threshold is set to Aggressive.
- D. The Power Management feature is configured.

**Correct Answer:** A

**Section:** (none)

**Explanation**

**Explanation/Reference:**

#### QUESTION 97

The vSphere administrator is configuring directory services for an ESXi host:



What should the vSphere administrator do to configure the host to use CAM services?

- A. Check the Use vSphere Authentication Proxy checkbox.
- B. Set Select Directory Service Type to CAM services.
- C. Specify CAM\$ for the Domain.
- D. Set Trusted Domains to cam\name.tld where name.tld is the domain that the host is joining.

**Correct Answer:** A

**Section:** (none)

**Explanation**

**Explanation/Reference:**

**QUESTION 98**

Users of an application are reporting performance issues.

The following performance values are observed in the vSphere Web Client:

- Host CPU utilization is 90%
  - Virtual Machine memory utilization is consistently greater than 90% ▪
- CPU Ready values are higher than 20%

What could be the cause of the application performance issue?

- A. The host is lacking the CPU resources required to meet the demand.
- B. The host is lacking the memory resources required to meet the demand.
- C. The virtual machine is lacking the CPU resources required to meet the demand.
- D. The virtual machine is lacking the memory resources required to meet the demand.

**Correct Answer:** A

**Section:** (none)

**Explanation**

**Explanation/Reference:**



#### QUESTION 99

What condition would prevent an administrator from creating a new VMFS3 datastore on an ESXi 6.x host using the vSphere Web Client?

- A. A VMFS3 datastore cannot be created on an ESXi 6.x host.
- B. The VMFS3 kernel module is not loaded.
- C. A VMFS3 datastore cannot be mounted on an ESXi 6.x host.
- D. VMFS3 datastores are not compatible with virtual machines created on an ESXi 6.x host.

**Correct Answer:** A

**Section:** (none)

**Explanation**

**Explanation/Reference:**

#### QUESTION 100

An administrator is moving a virtual machine into a resource pool. The VM and resource pool are configured as shown:

VM configuration:

2GHz CPU reservation  
1GB Memory limit

**Resource Pool configuration:**

6GHz CPU reservation  
1GB Memory reservation  
No limit to memory

What happens to the virtual machine's resource settings when it is moved into the pool?

- A. The VM inherits the resource settings of the resource pool if expandable reservations is enabled.
- B. The VM's reservations and limits are ignored and removed.
- C. The VM keeps the 2GHz CPU reservation but receives the 1GB memory reservation.
- D. The VM keeps the 2GHz CPU reservation and the 1GB Memory limit.

**Correct Answer:** D

**Section:** (none)

**Explanation**

**Explanation/Reference:**



**QUESTION 101**

Which two parameters are required when adding an iSCSI target to an iSCSI Software Adapter using Dynamic Discovery? (Choose two.)

- A. The iSCSI device's IP Address or Fully Qualified Domain Name
- B. The Port Number
- C. The iSCSI device's iSCSI Qualified Name (IQN)
- D. The Default Gateway IP Address

**Correct Answer:** AB

**Section:** (none)

**Explanation**

**Explanation/Reference:**

**QUESTION 102**

Which two Identity Sources are available to add for vCenter Single Sign-On authentication? (Choose two.)

- A. LocalOS
- B. OpenLDAP
- C. NIS as an LDAP Server
- D. VCMSDS

**Correct Answer:** AB

**Section:** (none)

**Explanation**

**Explanation/Reference:**

### QUESTION 103

How many Link Aggregation Groups (LAGs) can be configured on a vSphere 6.x Distributed Switch?

- A. 64
- B. 96
- C. 128
- D. 256



**Correct Answer:** A

**Section:** (none)

**Explanation**

**Explanation/Reference:**

### QUESTION 104

Which two NFS Protocol versions does vSphere 6 support? (Choose two.)

- A. Version 3
- B. Version 3.1 C. Version 4
- D. Version 4.1

**Correct Answer:** AD

**Section:** (none)

**Explanation**

**Explanation/Reference:**



**QUESTION 105**

An administrator is attempting to restore a number of files in a directory within the Operating System of a virtual machine. How can the administrator restore the files from a previous backup?

- A. Use the File Level Restore option from the selected backup of the virtual machine in the vSphere Web Client.
- B. Connect to the File Level Restore tool from a web browser in the virtual machine.
- C. Connect to the File Level Restore tool from the VMware Data Protection appliance.
- D. Use the File Level Restore option from the selected backup of the virtual machine in the vSphere Client.

**Correct Answer:** B

**Section:** (none)

**Explanation**

**Explanation/Reference:**

**QUESTION 106**

An organization has a number of virtual machines that would benefit from Fault Tolerance.

These include:

- A single vCPU Apache Server
- A dual vCPU vCenter Server
- A quad vCPU SQL Server
- An eight vCPU Hadoop Server

Which two virtual machines can be configured to use VMware Fault Tolerance? (Choose two.)

- A. Apache Server
- B. vCenter ServerC. SQL Server
- D. Hadoop Server

**Correct Answer:** AC

**Section:** (none)

**Explanation**

**Explanation/Reference:**

**QUESTION 107**

From which two locations in the inventory hierarchy can you deploy a virtual machine using a template? (Choose two.)

- A. Directly from the template.
- B. From a compute resource.
- C. From an existing virtual machine.
- D. From a Datastore.

**Correct Answer:** AB

**Section:** (none)

**Explanation**

**Explanation/Reference:**

#### QUESTION 108

What is a benefit of using Enhanced vMotion Compatibility for an environment?

- A. EVC masks CPU features to allow compatibility between hosts that are dissimilar.
- B. EVC allows for cross platform vMotion to occur.
- C. EVC enables Long Distance vMotion.
- D. EVC enables Storage vMotion functionality.

**Correct Answer:** A

**Section:** (none)

**Explanation**

**Explanation/Reference:**

#### QUESTION 109

An administrator creates a DRS cluster of eight ESXi 6.x hosts. There are 10 virtual machines balanced across the hosts. An attempt to place the first host into maintenance mode fails.

What are two reasons that the host failed to enter maintenance mode? (Choose two.)

- A. The DRS cluster Automation Level is set to Partially Automated mode.
- B. One of the virtual machines on the ESXi Host entering maintenance mode is configured with a DRS Host affinity rule Should run on hosts in group.
- C. One of the virtual machines on the ESXi Host entering maintenance mode is configured with a DRS Host affinity rule Must run on hosts in group.
- D. One of the virtual machines on the ESXi Host entering maintenance mode is configured with an individual Automation Level set to Partially Automated.

**Correct Answer:** AD

**Section:** (none)

**Explanation**

**Explanation/Reference:**

#### **QUESTION 110**

An administrator is attempting to migrate a large Hadoop virtual machine using vMotion.

The administrator notices a delay when the machine is quiesced. The Hadoop virtual machine is processing many transactions a second to an in-memory database. Which two actions would help reduce the amount of time needed to perform a vMotion on this virtual machine? (Choose two.)

- A. Use multiple NICs for the vMotion vmkernel port.
- B. Use a 10Gbps Network card for the vMotion vmkernel port.
- C. Add an additional management network to help transmit the data quicker.
- D. Disable Fault Tolerance before performing the vMotion.

**Correct Answer:** AB

**Section:** (none)

**Explanation**

**Explanation/Reference:**

#### **QUESTION 111**

Which statement is true regarding the licensing of vCenter Server?

- A. The license for vCenter Server must be provided at the time of installation.
- B. Changing the license assigned to vCenter Server requires a restart of the vCenter Server service.
- C. Virtual machines can still be powered on if the vCenter Server license expires.
- D. Licensing for a single vCenter Server installation is determined by the number of managed virtual machines.

**Correct Answer:** C

**Section:** (none)

**Explanation**

**Explanation/Reference:**

**QUESTION 112**

An administrator needs to verify that vMotion operations can be performed in a vSphere data center.

What round trip time (RTT) latency is the maximum value that will allow vMotion operations to succeed?

- A. 50ms RTT
- B. 100ms RTT. 150ms RTT
- D. 200ms RTT

**Correct Answer:** B

**Section:** (none)

**Explanation**

**Explanation/Reference:**

**QUESTION 113**

What is a valid plug-in status for a plug-in that has been added to a vSphere client?

- A. Disabled
- B. Unknown
- C. Stopped
- D. Installed

**Correct Answer:** A

**Section:** (none)

**Explanation**

**Explanation/Reference:**

**QUESTION 114**

A virtual machine has been renamed and an administrator is unable to find files with the new virtual machine name in the datastore.

What is the reason for this?

- A. The names of the files on the datastore do not change.
- B. The names of the files on the datastore have been corrupted.
- C. The virtual machine needs to be re-added to the inventory.
- D. The Distributed Resource Scheduler moved the virtual machine to another host.

**Correct Answer:** A

**Section:** (none)

**Explanation**

**Explanation/Reference:**

#### **QUESTION 115**

A new vApp was built and tested in the corporate headquarters datacenter running vSphere 6.x.

What condition would explain why the virtual machine is failing to boot in an offsite datacenter running on vSphere 5.5?

- A. The virtual machine was built with the default hardware version.
- B. The VMFS 5 datastore is not compatible with virtual machines configured with vSphere 6.x.
- C. A DRS 5.5 cluster cannot run virtual machines configured with vSphere 6.x.
- D. The VMDK file is locked.

**Correct Answer:** A

**Section:** (none)

**Explanation**

**Explanation/Reference:**



#### **QUESTION 116**

When configuring vSphere Replication for a virtual machine, what is the lowest Recovery Point Objective (RPO) that can be selected?

- A. 1 min
- B. 5 min
- C. 10 min
- D. 15min

**Correct Answer:** B

**Section:** (none)

**Explanation**

**Explanation/Reference:**

#### **QUESTION 117**

Which two Fibre Channel zoning options are supported with vSphere 6.x? (Choose two.)

- A. Single-Initiator
- B. Single-Initiator-Single-Target
- C. Multiple-Initiators-Single-Target
- D. Multiple-Initiators-Multiple-Targets

**Correct Answer:** AB

**Section:** (none)

**Explanation**

**Explanation/Reference:**

#### QUESTION 118

Which two are true about the Risk badge in vRealize Operations? (Choose two.)

- A. The Risk badge indicates potential future problems that may degrade the performance of the system.
- B. Risks may require attention in the near future.
- C. The Risk badge indicates problems that are degrading performance of the system.
- D. Risks require attention now to correct system performance problems.

**Correct Answer:** AB

**Section:** (none)

**Explanation**

**Explanation/Reference:**

#### QUESTION 119

When attempting to power on a Virtual Machine you observe the following error:

Cannot open the disk '/vmfs/volumes/volume/vm/vm-000002.vmdk' or one of the snapshot disks it depends on.

Which three actions will be the best solutions to address this problem? (Choose three.)

- A. Verify that the virtual machine's disk files are present.
- B. Investigate the host and virtual machine log files.
- C. Verify the vmdk descriptor files and if required, recreate them.

- D. Delete the disk file preventing the power on operation.
- E. Migrate or register the virtual machine to a different host.

**Correct Answer:** ABC

**Section:** (none)

**Explanation**

**Explanation/Reference:**

#### QUESTION 120

Which two allow for the disabling of Network Rollback operations? (Choose two.)

- A. Modifying the vpxd advanced configuration options and adding the config.vpxd.network.rollback key
- B. Modifying the C:\ProgramData\VMware\CIS\cfg\vmware-vpx\vpzd.cfg file and adjusting the <rollback> xml tag
- C. Modifying the C:\ProgramData\VMware\CIS\cfg\vmware-vpx\vpzd.cfg file and adjusting the <networkrollback> xml tag
- D. Modifying the C:\ProgramData\VMware\CIS\cfg\vmware-vpx\firstboot\vpzd-service-spec.prop file and adjusting the <rollback> xml tag

**Correct Answer:** AB

**Section:** (none)

**Explanation**

**Explanation/Reference:**

#### QUESTION 121

An administrator is configuring the Failover Order option on a vSphere Distributed Switch.

Which two options should be used with IP-hash load balancing? (Choose two.)



<https://vceplus.com/>

- A. Active Uplinks
- B. Standby Uplinks
- C. Unused Uplinks
- D. Override Failover Order

**Correct Answer:** AC

**Section:** (none)

**Explanation**

**Explanation/Reference:**

#### QUESTION 122

An administrator receives a report that no real time statistics are available for a virtual machine in the vCenter Server inventory. Which two statements indicate likely causes of the problem? (Choose two.)

- A. The virtual machine is powered off.
- B. The host containing the virtual machine is disconnected from vCenter Server.
- C. There is insufficient real time data to display the information.
- D. The vCenter Server service is not running.

**Correct Answer:** AB

**Section:** (none)

**Explanation**

**Explanation/Reference:**

#### QUESTION 123

Which three actions can be executed when an alarm is triggered? (Choose three.)

- A. Send an email.
- B. Send an SNMP trap.
- C. Run a script or command.
- D. Run an Orchestrator workflow.
- E. Send a trigger to syslog.

**Correct Answer:** ABC



**Section: (none)**

**Explanation**

**Explanation/Reference:**

**QUESTION 124**

Which two events happen when Distributed Resource Scheduler (DRS) is disabled? (Choose two.)

- A. The cluster's resource pool heirarchy and affinity rules are re-established when DRS is turned back on.
- B. The cluster's resource pool hierarchy and affinity rules are not re-established when DRS is turned back on.
- C. The cluster's resource pools are removed from the cluster.
- D. The cluster's resource pools are removed from the cluster and assigned to the hosts.

**Correct Answer: BC**

**Section: (none)**

**Explanation**

**Explanation/Reference:**



**QUESTION 125**

An administrator attempts to create a Thick Provisioned Virtual Disk (VMDK) on an NFS datastore; but it fails.

Which two reasons would explain the failure? (Choose two.)

- A. Datastore is on an NFS 3 storage server that does not support Hardware Acceleration
- B. Datastore is on an NFS 4.1 storage server
- C. Only VMFS datastores support "Thick Provisioned" VMDK
- D. The NFS datastore was not created on a "Thick Provisioned" device

**Correct Answer: AB**

**Section: (none)**

**Explanation**

**Explanation/Reference:**

**QUESTION 126**

A small company wants to use VMware products for its production systems. The system administrator needs to recommend a solution that will deliver High Availability to the company's production applications.

What is minimum vSphere offering that will support this requirement?

- A. vSphere Essentials
- B. vSphere Essentials Plus
- C. vSphere Hypervisor
- D. vSphere Standard

**Correct Answer:** B

**Section:** (none)

**Explanation**

**Explanation/Reference:**

#### QUESTION 127

Which two High Availability (HA) Cluster admission control policies can help avoid resource fragmentation? (Choose two.)

- A. Define failover capacity by static number of hosts
- B. Define failover capacity by reserving a percentage of the cluster resources
- C. Use dedicated failover hosts
- D. Use Virtual Machine Monitoring

**Correct Answer:** AC

**Section:** (none)

**Explanation**

**Explanation/Reference:**

Reference: <https://docs.vmware.com/en/VMware-vSphere/6.0/com.vmware.vsphere.avail.doc/GUID-85D9737E-769C-40B6-AB73-F58DA1A451F0.html> <https://docs.vmware.com/en/VMware-vSphere/6.0/com.vmware.vsphere.avail.doc/GUID-53F6938C-96E5-4F67-9A6E-479F5A894571.html>

#### QUESTION 128

An administrator is creating a new vSphere Distributed Switch that will be utilized with a specific vSphere Cluster. The cluster itself contains a mix of ESXi 5.x and 6.x Hosts.

Which Distributed Switch version should be created to support this configuration?

- A. Distributed Switch: 6.0.0 B.
- Distributed Switch: 5.0.0 C.
- Distributed Switch: 5.1.0
- D. Distributed Switch: 5.5.0

**Correct Answer:** B

**Section:** (none)

**Explanation**

**Explanation/Reference:**

#### QUESTION 129

An administrator is virtualizing a physical application server and adding it to an existing multi-tiered vApp. The application license is currently tied to the physical NIC's MAC address, so the administrator needs to ensure the license will function properly in the virtual machine.

Which two actions can the administrator take to satisfy this task? (Choose two.)

- A. Set the MAC address for the vNIC in the guest operating system.
- B. Install the physical server's NIC into the ESXi host.
- C. Configure the MAC address for the vNIC using the vSphere Web Client.
- D. Assign the physical server NIC's MAC address in the vSphere Distributed Switch.

**Correct Answer:** AC

**Section:** (none)

**Explanation**

**Explanation/Reference:**

#### QUESTION 130

Which three actions can be taken as a result of executing the vSphere Update Manager 6.x scan and remediation wizards? (Choose three.)

- A. Install and upgrade software in virtual machines.
- B. Upgrade the firmware on ESXi host devices.
- C. Upgrade and Patch ESXi hosts.
- D. Install and update third-party software on hosts.
- E. Upgrade virtual machine hardware.

**Correct Answer:** CDE

**Section: (none)**

**Explanation**

**Explanation/Reference:**

**QUESTION 131**

Which two storage controller configurations can be used with Virtual SAN? (Choose two.)

- A. SAS controllers in Passthrough mode
- B. SAS controllers in RAID0 mode
- C. SAS controllers in RAID1 mode
- D. SAS controllers in RAID10 mode

**Correct Answer: AB**

**Section: (none)**

**Explanation**

**Explanation/Reference:**



**QUESTION 132**

An administrator has been tasked with enabling High Availability (HA) on a cluster in a vSphere 6.x environment with default settings. The cluster configures properly and there are no errors.

The next day when powering on a virtual machine, an error is presented:

Not Enough Failover Resources

Which three scenarios are likely causes of this error message? (Choose three.)

- A. The default VM Monitoring Sensitivity is set too high.
- B. There are not enough datastore heartbeat datastores configured by default.
- C. The default slot size in the cluster is set too high.
- D. There are virtual machines with large CPU reservations.
- E. A host is in maintenance mode for a replacement of a failed Hard Drive.

**Correct Answer: CDE**

**Section: (none)**

**Explanation**

**Explanation/Reference:**

**QUESTION 133**

An administrator configures vSphere Replication for a virtual machine and enables multiple point in time (PIT) instances under the recovery settings in the Configure Replication wizard.

Which two statements are correct for vSphere Replication with multiple point in time instances enabled? (Choose two.)

- A. vSphere Replication retains a number of snapshot instances of the virtual machine on the target site based on the retention policy that you specify.
- B. vSphere Replication uses the virtual machine's snapshot instances to define the target site Point in Time instance based on the retention policy that you specify.
- C. vSphere Replication does not support virtual machines with snapshots.
- D. vSphere Replication supports virtual machines with snapshots.

**Correct Answer:** AC

**Section:** (none)

**Explanation**

**Explanation/Reference:**



**QUESTION 134**

Which two networking connection types can be configured on a virtual switch? (Choose two.)

- A. Virtual machine portgroups
- B. VMkernel services (such as NFS, iSCSI, or vMotion) to the physical network
- C. Web services over the Management Network
- D. NFS and FCoE storage services

**Correct Answer:** AB

**Section:** (none)

**Explanation**

**Explanation/Reference:**

**QUESTION 135**

Which three statements are true regarding Fault Tolerance? (Choose three.)

- A. Applications need to be continuously available to users.
- B. Applications without native clustering capabilities can be protected.
- C. Custom clustering solutions are complicated to configure and maintain.
- D. Applications that have 16 vCPUs are supported.
- E. Prevents application crashes by analyzing the workload and correcting problems.

**Correct Answer:** ABC

**Section:** (none)

**Explanation**

**Explanation/Reference:**

#### QUESTION 136

An administrator is installing a new network card in an ESXi 6.x host that is part of a vSphere cluster. When the host is placed into maintenance mode, the vSphere Web Client displays the progress bar at 2% for over 30 minutes.

Which two are likely reasons for this occurrence? (Choose two.)

- A. Maintenance mode is unable to migrate all virtual machines from the host.
- B. There is a large number of virtual machines that must be migrated from the host.
- C. VMware High Availability is in the process of reconfiguring the cluster.
- D. Each virtual machine on the ESXi host must be reconfigured to recognize the new adapter.

**Correct Answer:** AB

**Section:** (none)

**Explanation**

**Explanation/Reference:**

#### QUESTION 137

An administrator is attempting to power on a virtual machine, but the task is hanging at 95%.

What three scenarios best explain why this problem is happening? (Choose three.)

- A. A virtual machine question is currently being posed to the administrator.
- B. Another task for the virtual machine or other component is already in progress.
- C. The VMware High Availability cluster has insufficient resources to guarantee failover.

D. The host has lost access to the storage device containing the virtual machine files. E. The host is under resource contention and unable to power on the virtual machine.

**Correct Answer:** ABC

**Section:** (none)

**Explanation**

**Explanation/Reference:**

#### **QUESTION 138**

An administrator is attempting to power on a virtual machine, but is unable to do so.

Which two reasons are probable causes of the failure? (Choose two.)

- A. Storage access to the virtual machine swap file has been lost.
- B. One of the virtual machine VMDK files is locked.
- C. Virtual machine is running CentOS 7.0 64-bit.
- D. Virtual machine has Hyper-Threading enabled.

**Correct Answer:** AB

**Section:** (none)

**Explanation**

**Explanation/Reference:**

#### **QUESTION 139**

Which three conditions would prevent Storage I/O Control from being enabled on a group of datastores? (Choose three.)

- A. The datastores planned for the solution are used by different vSphere clusters.
- B. A datastore planned for the solution is configured as a Raw Device Mapping file.
- C. A datastore planned for the solution has three extents.
- D. A datastore planned for the solution is configured as NFS.
- E. The organization has an Enterprise license.

**Correct Answer:** BCE

**Section:** (none)

**Explanation**

**Explanation/Reference:**

**QUESTION 140**

An administrator is cloning and configuring five new web server virtual machines.

What would be the benefit of configuring resource shares for the new Vms?

- A. To prioritize access to a resource during contention.
- B. To guarantee access to a resource during contention.
- C. To prioritize access to a resource before contention occurs.
- D. To guarantee access to a resource before contention occurs.

**Correct Answer:** A

**Section:** (none)

**Explanation**

**Explanation/Reference:**

**QUESTION 141**

By default, each ESXi 6.x host is provisioned with a certificate from which root certificate authority?



<https://vceplus.com/>

- A. RedHat Certificate Authority
- B. VMware Certificate Authority
- C. DigiCert Certificate Authority
- D. Verisign Certificate Authority

**Correct Answer:** B

**Section:** (none)

**Explanation**



**Explanation/Reference:**

**QUESTION 142**

During the installation of ESXi 6.0, the following error message is reported:

Hardware Virtualization is not a feature of the CPU, or is not enabled in the BIOS.

Which condition would generate this message?

- A. LAHF/SAHF is not enabled in the BIOS.
- B. NX/XD is not enabled in the BIOS.
- C. SSE3 is not enabled in the BIOS.
- D. Hyperthreading is not enabled in the BIOS.

**Correct Answer: B**

**Section: (none)**

**Explanation**

**Explanation/Reference:**



**QUESTION 143**

An administrator has a virtual machine that requires four times the compute resources than other virtual machines on the same ESXi 6.x host.

How should the administrator configure the virtual machine settings, in order to be prepared for any resource contention?

- A. Set the shares of the priority virtual machine to High and the rest to Low.
- B. Set the shares of the priority virtual machine to High.
- C. Set the shares of the priority virtual machine to High and the rest to Normal.
- D. Set the shares of the priority virtual machine to Normal and the rest to Low.

**Correct Answer: A**

**Section: (none)**

**Explanation**

**Explanation/Reference:**

**QUESTION 144**

An administrator is using the Host Failures to Tolerate Admission Control Policy for a vSphere High Availability (HA) cluster. When configuring this setting on the cluster, the administrator sees this error message:

Insufficient resources to satisfy HA failover level on cluster

What are two likely causes for the error? (Choose two.)

- A. The hosts in the cluster are disconnected.
- B. A host in the cluster is displaying an HA error.
- C. Distributed Resource Scheduler has not been configured on the cluster.
- D. Virtual Machine Component Protection has not been turned on.

**Correct Answer:** AB

**Section:** (none)

**Explanation**

**Explanation/Reference:**

#### QUESTION 145

An administrator is only able to see the Health Badge when using the vRealize Operations user interface. What is the likely cause of this behavior?

- A. The vRealize Operations Foundation License is in use.
- B. The vmware-sps service failed to start.
- C. The vRealize Operations Standard License is in use.
- D. The vmware-rbd-watchdog service failed to start.

**Correct Answer:** A

**Section:** (none)

**Explanation**

**Explanation/Reference:**

#### QUESTION 146

Which two components can be used when configuring Enhanced Linked Mode? (Choose two.)

- A. vCenter Server Appliance
- B. vRealize Operations Manager

- C. vSphere Management Appliance
- D. vCenter Server for Windows

**Correct Answer:** AD

**Section:** (none)

**Explanation**

**Explanation/Reference:**

#### **QUESTION 147**

A company has recently incurred financial loss, due to a crashed server that resulted in the loss of critical data.

Which two vSphere 6.x features should this company implement to protect against losing critical data due to physical server failure? (Choose two.)

- A. Virtual Volumes
- B. Enhanced vMotion Capability
- C. High Availability
- D. Fault Tolerance

**Correct Answer:** CD

**Section:** (none)

**Explanation**

**Explanation/Reference:**

#### **QUESTION 148**

Which feature of vSphere 6.x enables organizations to move virtual machines across data centers?

- A. Long Distance vMotion
- B. Content Library
- C. Auto Deploy
- D. Replication

**Correct Answer:** A

**Section:** (none)

**Explanation**

**Explanation/Reference:**



**QUESTION 149**

Which three VLAN Tagging modes are available in vSphere 6.x? (Choose three.)

- A. External Switch Tagging
- B. Private VLAN Tagging
- C. Virtual Switch Tagging
- D. VXLAN Tagging
- E. Virtual Guest Tagging

**Correct Answer:** ACE

**Section:** (none)

**Explanation**

**Explanation/Reference:**

**QUESTION 150**

An administrator wants to add a web server to an existing multi-tier application consisting of three virtual machines:

A web server

A database server

An application server

The web server should be added to the application when the primary web server reaches:

70% vCPU utilization

55% active memory

Which option will achieve this result?

- A. Create a virtual machine alarm with an action to run a script that starts a new instance of the web server.
- B. Create a host cpu and memory alarm with an action to run a script that starts a new instance of the web server.
- C. Configure HA application monitoring for the web server and set it to trigger deployment of a new instance of the web server.
- D. Configure Fault Tolerance on the virtual machine and leave the secondary machine disabled until needed.

**Correct Answer:** A

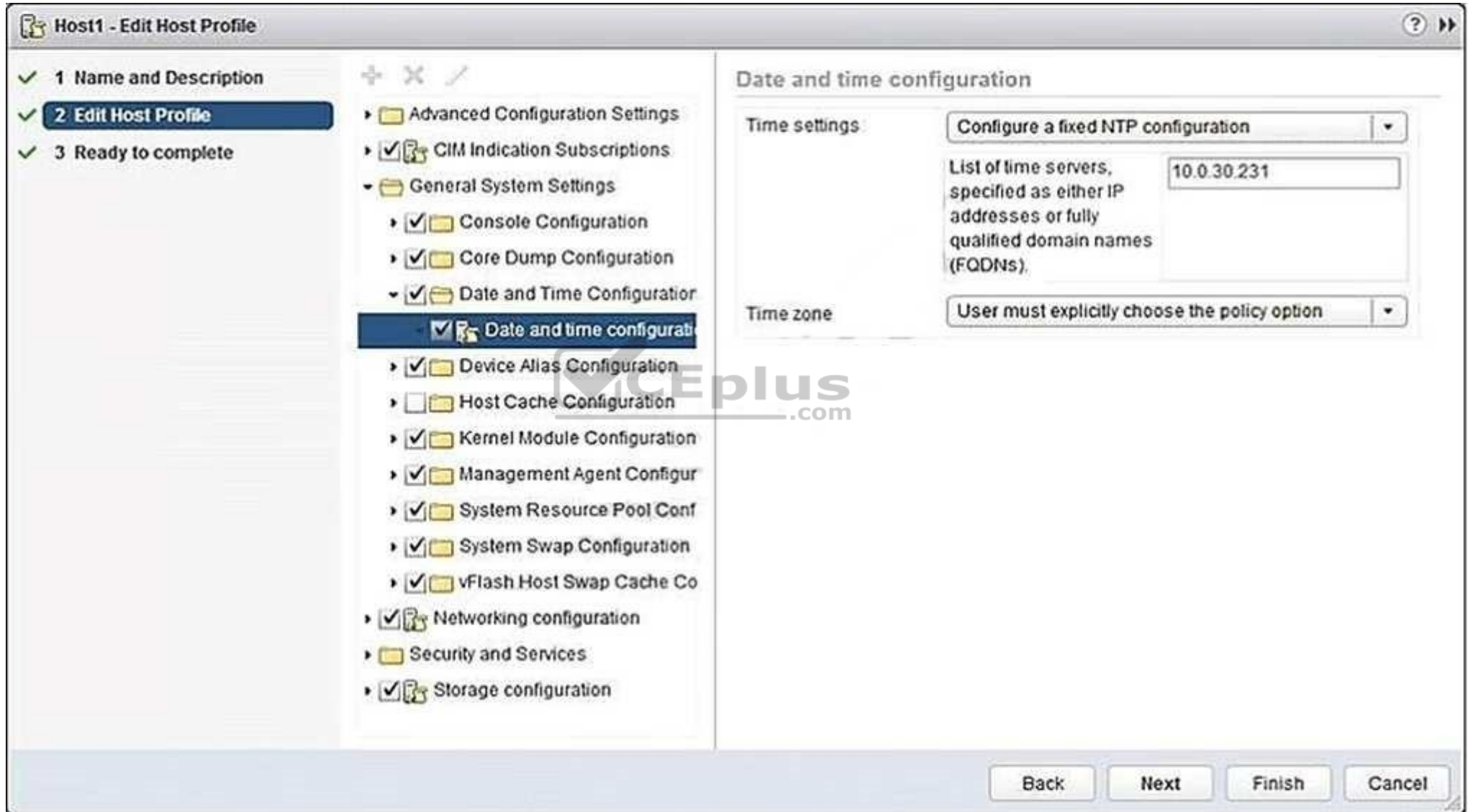
**Section:** (none)

**Explanation**

**Explanation/Reference:**

### QUESTION 151

Refer to the Exhibit. An administrator has configured a host profile so that ESXi 6.x hosts will point to the corporate NTP server for time synchronization. The NTP server is located at 10.0.30.213, but time has not been synchronized properly across the ESXi hosts.



The screenshot shows the 'Host1 - Edit Host Profile' window. On the left, a list of configuration sections is shown, with 'Date and Time Configuration' selected. The right pane displays the 'Date and time configuration' settings. Under 'Time settings', the option 'Configure a fixed NTP configuration' is selected, and the 'List of time servers, specified as either IP addresses or fully qualified domain names (FQDNs)' is set to '10.0.30.213'. Under 'Time zone', the option 'User must explicitly choose the policy option' is selected. At the bottom, there are buttons for 'Back', 'Next', 'Finish', and 'Cancel'.

**Host1 - Edit Host Profile**

- ✓ 1 Name and Description
- ✓ **2 Edit Host Profile**
- ✓ 3 Ready to complete

- Advanced Configuration Settings
- ✓ CIM Indication Subscriptions
- General System Settings
  - ✓ Console Configuration
  - ✓ Core Dump Configuration
  - ✓ **Date and Time Configuration**
  - Date and time configuration**
  - ✓ Device Alias Configuration
  - Host Cache Configuration
  - ✓ Kernel Module Configuration
  - ✓ Management Agent Configur
  - ✓ System Resource Pool Conf
  - ✓ System Swap Configuration
  - ✓ vFlash Host Swap Cache Co
- ✓ Networking configuration
- Security and Services
- ✓ Storage configuration

**Date and time configuration**

Time settings: **Configure a fixed NTP configuration**

List of time servers, specified as either IP addresses or fully qualified domain names (FQDNs): **10.0.30.213**

Time zone: **User must explicitly choose the policy option**

Back Next Finish Cancel

The administrator reviews Host Profile settings as shown in the Exhibit.

Which two steps are required to resolve the issue? (Choose two.)

- A. Correct the NTP server IP address.
- B. Check the host for host profile compliance.
- C. Remediate the host based on the updated host profile.
- D. Change the NTP server to the FQDN as IP Addresses are not supported.

**Correct Answer:** AC

**Section:** (none)

**Explanation**

**Explanation/Reference:**

#### QUESTION 152

Which two Virtual SAN related actions might start resynchronization of virtual machine objects?  
(Choose two.)

- A. Editing a virtual machine storage policy to increase the number of replicas.
- B. Editing a virtual machine storage policy to reduce the number of replicas.
- C. Editing a virtual machine storage policy to increase the number of disk stripes.
- D. Editing a virtual machine storage policy to reduce the number of disk stripes.

**Correct Answer:** AC

**Section:** (none)

**Explanation**

**Explanation/Reference:**

Reference: <https://docs.vmware.com/en/VMware-vSphere/6.0/com.vmware.vsphere.virtualsan.doc/GUID-04ED9C07-BC61-4E3C-9188-9D2E460C9CA3.html>

#### QUESTION 153

An administrator has just completed installing an ESXi 6.x host, but doesn't know what address has been configured.

Where is the ESXi host IP address configured?

- A. RVC console
- B. Direct Console User Interface

- C. vSphere Web Client
- D. vSphere Client

**Correct Answer: B**

**Section: (none)**

**Explanation**

**Explanation/Reference:**

#### **QUESTION 154**

A High Availability (HA) cluster is configured to respond to a given number of host failures.

The cluster contains virtual machines configured with these settings:

- VM1 has a 1GHz CPU reservation and no Memory reservation
- VM2 has a 2GHz CPU reservation and no Memory reservation - VM3 has no CPU reservation and no Memory reservation

Given this information, what is the correct slot size for the cluster?

- A. The CPU Reservation should be set to 32MHz and the memory reservation should be set to 32MB plus memory overhead.
- B. The CPU reservation should be set to 1 GHz and the memory reservation should be set to 0MB plus memory overhead.
- C. The CPU reservation should be set to 2 GHz, and the memory reservation should be set to 0MB plus the virtual machine memory overhead.
- D. The CPU reservation should be set to 2 GHz, and the memory reservation should be set to 32MB, plus the virtual machine memory overhead.

**Correct Answer: C**

**Section: (none)**

**Explanation**

**Explanation/Reference:**

#### **QUESTION 155**

Which three features can be enabled for a new host cluster? (Choose three.)

- A. Storage Distributed Resource Scheduling
- B. High Availability
- C. Fault Tolerance
- D. Distributed Resource Scheduling
- E. Virtual SAN

**Correct Answer:** BDE

**Section:** (none)

**Explanation**

**Explanation/Reference:**

#### **QUESTION 156**

As part of a multisite Single Sign-On (SSO) deployment what two steps are required to ensure that a change to one Single Sign-On instance is propagated to the other instances? (Choose two.)

- A. Schedule a Replication Task on the primary instance
- B. Select the first instance during the installation of subsequent instances
- C. During the installation of each instance choose Linked-Mode
- D. Enable Synchronize to Active Directory on each instance

**Correct Answer:** AC

**Section:** (none)

**Explanation**

**Explanation/Reference:**



#### **QUESTION 157**

An administrator attempts to install vCenter Single Sign-On Server. The installer returns an error message indicating that the installation failed. Prior to the installation, all setup prerequisites were met. The administrator has generated a vCenter Server Single Sign-On support bundle.

Which two files should the administrator analyze to determine the cause of the failure? (Choose two.)

- A. Server\utils\logs\imsTrace.log
- B. Server\utils\logs\install.txt
- C. %TEMP%\utils\logs\vminst.log
- D. %TEMP%\vminst.log

**Correct Answer:** AD

**Section:** (none)

**Explanation**

**Explanation/Reference:**



Explanation:

[http://kb.vmware.com/selfservice/microsites/search.do?language=en\\_US&cmd=displayKC&externalId=2033880](http://kb.vmware.com/selfservice/microsites/search.do?language=en_US&cmd=displayKC&externalId=2033880)

[https://www.vmware.com/support/ws5/doc/intro\\_techsup\\_ws.html](https://www.vmware.com/support/ws5/doc/intro_techsup_ws.html)

#### QUESTION 158

Which three steps must be taken to use vSphere Update Manager 6.x to upgrade an ESXi 5.5 host to vSphere 6.x? (Choose three.)

- A. Download an ESXi Image.
- B. Configure the vSphere Update Manager Download Service.
- C. Create a baseline and attach it to the ESXi Host.
- D. Scan the vCenter Content Library for the ESXi Image.
- E. Remediate the ESXi Host.

**Correct Answer:** ACE

**Section:** (none)

**Explanation**

**Explanation/Reference:**



#### QUESTION 159

Which vSphere 6 Standard Edition feature will allow an organization to ensure that critical multi-threaded applications have the maximum possible uptime?

- A. Fault Tolerance
- B. High Availability
- C. Distributed Resource Scheduler
- D. App HA

**Correct Answer:** A

**Section:** (none)

**Explanation**

**Explanation/Reference:**

#### QUESTION 160

An administrator must determine an appropriate backup solution, given these conditions:

- 50 of the virtual machines are in a resource pool named Finance.

- 50 of the virtual machines are in a resource pool named QA.

Which solution allows an administrator the ability to backup 100 virtual machines?

- A. Use Snapshot Manager on the vCenter Server to backup the virtual machines.
- B. Use the VMware Consolidated Backup (vcb) tool on the ESXi Host to backup the virtual machines.
- C. Use the VMware Data Recovery (VDR) Appliance on the vCenter Server to backup the virtual machines.
- D. Use the VMware Data Protection (VDP) Appliance on one of the ESXi Hosts to backup the virtual machines.

**Correct Answer:** D

**Section:** (none)

**Explanation**

**Explanation/Reference:**

#### QUESTION 161

An administrator is performing an interactive installation of ESXi 6.x.

Which three options are available for installation? (Choose three.)

- A. DVD
- B. USB
- C. PXE
- D. Scripted
- E. Auto Deploy

**Correct Answer:** ABC

**Section:** (none)

**Explanation**

**Explanation/Reference:**

#### QUESTION 162

What are two ways to identify TCP/IP stack information? (Choose two.)

- A. Using the vSphere Web Client
- B. Using `esxcli network ip netstack`
- C. Using `esxcfg-netstack`

D. Using the vSphere Client

**Correct Answer:** AB

**Section:** (none)

**Explanation**

**Explanation/Reference:**

#### **QUESTION 163**

An application running in a virtual machine is experiencing performance issues. When utilizing performance monitoring utilities, it is noted that the CPU Utilization of the application is at 100%.

Which two scenarios are probable causes of the CPU contention for the application? (Choose two.)

- A. There is a network I/O constraint.
- B. There is a storage I/O constraint.
- C. There is insufficient disk space assigned to the virtual machine.
- D. The application is not virtualization aware.



**Correct Answer:** AB

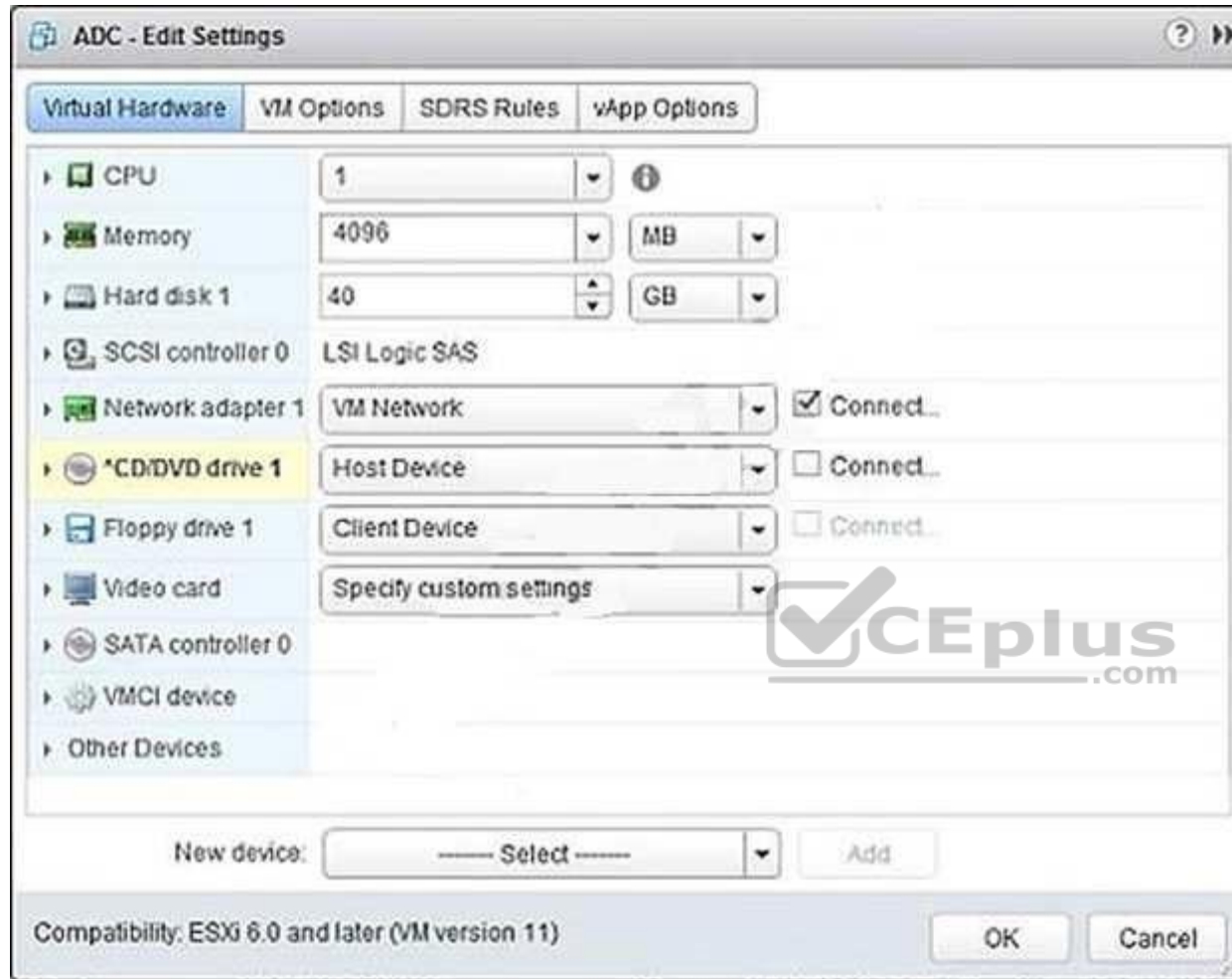
**Section:** (none)

**Explanation**

**Explanation/Reference:**

#### **QUESTION 164**

Refer to the Exhibit. An administrator is installing Windows into a virtual machine. The DVD has been mounted on the Host and configured for the virtual machine as shown in the Exhibit.



Based on the exhibit, when the virtual machine is booted, why would it attempt to search for a PXE server?

- A. The CD/DVD device is not connected.
- B. The ISO is in the incorrect storage location.
- C. The OS minimum requirements have not been met.
- D. The CD/DVD device is not set to Client Device.

**Correct Answer: A**

**Section: (none)**

**Explanation**

**Explanation/Reference:**

**QUESTION 165**

A virtual machine template is accidentally removed from the vCenter Server Inventory.

Which method would be used to recover the template back into the environment?

- A. Use the datastore browser to locate the template, then right click and add the .vmtx file to inventory.
- B. Use the datastore browser to locate the template, then right click and add the .vmx file to inventory.
- C. Using the Managed Object Browser and adding the template from the ManagedObjectReference:GuestFileManager object.
- D. Using the Managed Object Browser and adding the template from the ManagedObjectReference:VirtualDiskManager object.

**Correct Answer: A**

**Section: (none)**

**Explanation**

**Explanation/Reference:**



**QUESTION 166**

What two IT infrastructure components are virtualized by vSphere Essentials? (Choose two.)



<https://vceplus.com/>

- A. Networks
- B. Applications
- C. Storage

D. Management

**Correct Answer:** AC

**Section:** (none)

**Explanation**

**Explanation/Reference:**

#### **QUESTION 167**

An administrator is deploying multiple Windows 2003 Virtual Machines from the same template.

What two steps should be taken to avoid network conflicts? (Choose two.)

- A. Customize the guest operating system.
- B. Install VMware Tools into the new virtual machines.
- C. Copy the Microsoft Sysprep tools onto the vCenter Server system.
- D. Ensure the e1000 vmnic is selected for each new virtual machine.

**Correct Answer:** AC

**Section:** (none)

**Explanation**

**Explanation/Reference:**

Explanation: [https://docs.vmware.com/en/VMware-vSphere/6.0/com.vmware.vsphere.vm\\_admin.doc/GUID-F3E382AB-72F6-498A-BD26-7EC0BFE320A0.html](https://docs.vmware.com/en/VMware-vSphere/6.0/com.vmware.vsphere.vm_admin.doc/GUID-F3E382AB-72F6-498A-BD26-7EC0BFE320A0.html)

#### **QUESTION 168**

An administrator has an application that requires connection directly to PCI devices through a virtual machine.

What is a limitation of this configuration?

- A. Devices must be reserved for PCI passthrough on at least one host on which the virtual machine will run.
- B. Snapshots are not supported with DirectPath I/O passthrough devices.
- C. A maximum of 18 PCI vSphere DirectPath devices can be added to a virtual machine.
- D. Only one PCI controller can be presented to the virtual machine.

**Correct Answer:** B

**Section:** (none)

**Explanation**

**Explanation/Reference:**

Explanation: [https://docs.vmware.com/en/VMware-vSphere/6.5/com.vmware.vsphere.vm\\_admin.doc/GUID-53F65726-A23B-4CF0-A7D5-48E584B88613.html](https://docs.vmware.com/en/VMware-vSphere/6.5/com.vmware.vsphere.vm_admin.doc/GUID-53F65726-A23B-4CF0-A7D5-48E584B88613.html)

**QUESTION 169**

Which three connection types are available when configuring a vSwitch in the vSphere Web Client? (Choose three.)

- A. VMkernel Network Adapter
- B. Physical Network Adapter
- C. Virtual Machine Port Group for a Standard Switch
- D. vMotion Network Adapter
- E. vSAN Network Adapter

**Correct Answer:** ABC

**Section:** (none)

**Explanation**

**Explanation/Reference:**

**QUESTION 170**

You have just installed an ESXi 6.x Host. As part of your company security regulations, a security banner must be presented on the console of the host.

How can this action be accomplished?

- A. Configure the Advanced Settings > Annotations screen of the ESXi host.
- B. This is configured from the Direct Console User Interface configuration menu.
- C. It is not possible to configure a security banner for the ESXi host.
- D. From vCenter Server, this setting is configured globally in the vCenter Server configuration.

**Correct Answer:** A

**Section:** (none)

**Explanation**

**Explanation/Reference:**

Reference: <https://kb.vmware.com/s/article/2046347>

**QUESTION 171**

To comply with security requirements, an administrator with a vCenter Server Appliance needs to force logoff of the vSphere web client after 10 minutes of inactivity.

What should the administrator do to meet the requirement?

- A. Edit: /var/lib/vmware/vsphere-client/webclient.properties, modify session.timeout=10
- B. Edit: /opt/vmware/vsphere-client/webclient.properties, modify session.timeout=600
- C. Edit: /var/lib/vmware/vsphere-client/webclient.properties modify session.timeout=600
- D. Edit: /opt/vmware/vsphere-client/webclient.properties, modify session.timeout=10

**Correct Answer:** A

**Section:** (none)

**Explanation**

**Explanation/Reference:**

#### QUESTION 172

An administrator enables High Availability (HA) on a Virtual SAN cluster.

Which network is used for HA Network Heartbeat configuration?

- A. The Management network.
- B. The vMotion network.
- C. The Virtual SAN network.
- D. The Provisioning Traffic network.



**Correct Answer:** C

**Section:** (none)

**Explanation**

**Explanation/Reference:**

#### QUESTION 173

An administrator logs into the vSphere Web Client, but is unable to see any hosts and clusters.

Which two options could fix the problem? (Choose two.)

- A. Verify that the client web browser and vCenter Server are in the same broadcast domain.
- B. Verify that the vCenter Server system is registered with the same Platform Services Controller as the vSphere Web Client.
- C. Log in to the vCenter Server as a user within the Active Directory domain.



D. Log in to the vSphere Web Client as a user with permissions on the vCenter Server system.

**Correct Answer:** BD

**Section:** (none)

**Explanation**

**Explanation/Reference:**

#### QUESTION 174

What component must be installed prior to deploying a vCenter Server in vSphere 6.x?

- A. vCenter Identity Services
- B. Platform Services Controller
- C. vCenter Single Sign-On
- D. Client Integration Plug-In

**Correct Answer:** B

**Section:** (none)

**Explanation**

**Explanation/Reference:**

Reference: <https://docs.vmware.com/en/VMware-vSphere/6.0/com.vmware.vsphere.upgrade.doc/GUID-ACCD2814-0F0A-4786-96C0-8C9BB57A4616.html>

#### QUESTION 175

An administrator deploys vRealize Operations into a vSphere 6.x environment.

After the deployment, the administrator notices that badges are not appearing.

What is a likely cause of this behavior?

- A. Badges do not appear until you register vRealize Operations with vCenter Server.
- B. Badges do not appear until you register a vCenter Server in vRealize Operations.
- C. The vRealize Operations appliance needs to be redeployed.
- D. The vCenter Server appliance needs to be redeployed.

**Correct Answer:** A

**Section:** (none)

**Explanation**

**Explanation/Reference:**

**QUESTION 176**

What are two possible causes of Storage Distributed Resource Scheduler (SDRS) being disabled on one or more virtual machine disks in a datastore cluster?  
(Choose two.)

- A. The virtual machine has vSphere Fault Tolerance disabled.
- B. The virtual machine is a template.
- C. The virtual machine swap file is on a shared datastore.
- D. The disk is a CD-ROM/ISO file.

**Correct Answer:** BD

**Section:** (none)

**Explanation**

**Explanation/Reference:**

Reference: <https://docs.vmware.com/en/VMware-vSphere/6.0/com.vmware.vsphere.troubleshooting.doc/GUID-B749AAA0-7B67-4A79-BEDC-395DFEC9FC60.html>

**QUESTION 177**

An administrator has just configured the IP address on an ESXi host from the Direct Console User Interface. How can the configuration be validated as correct without any additional tools?

- A. Add the host to vCenter Server and if it works, then all networking settings are ok.
- B. Select the Test Management Network option from the DCUI.
- C. Connect to the host with the vSphere Client and click the Test Network option.
- D. Use PowerCLI to connect to the host and initiate a network test.

**Correct Answer:** B

**Section:** (none)

**Explanation**

**Explanation/Reference:**

**QUESTION 178**

An organization has an ESXi 6.x host that contains two resource pools.

The host is being relocated to a DRS cluster.

What two actions can be taken to integrate the host into the cluster, and what would happen to the existing ESXi resource pool hierarchy as a result? (Choose two.)

- A. Place all of the host's virtual machines into the DRS cluster root resource pool. The resource pools present on the host will be deleted.
- B. Create a resource pool for the ESXi host's virtual machines and resource pools. The resource pools present on the host will be deleted.
- C. Place all of the host's virtual machines into the DRS cluster root resource pool. The resource pools present on the host will be preserved.
- D. Create a resource pool for the ESXi host's virtual machines and resource pools. The resource pools present on the host will be preserved.

**Correct Answer:** AD

**Section:** (none)

**Explanation**

**Explanation/Reference:**

Reference: <https://pubs.vmware.com/vsphere-51/index.jsp?topic=%2Fcom.vmware.vsphere.vcenterhost.doc%2FGUID-0BCBA61B-8DCE-4069-B00395E7F9353B16.html>

#### QUESTION 179

An administrator has configured an alarm to be notified when a virtual machine meets either of these conditions:

High virtual CPU  
High active memory consumption.

The alarm is only triggering when both of the conditions are met.  
What can be done to correct the alarm behavior?

- A. Edit the alarm and select Trigger if ANY of the following conditions are satisfied.
- B. Edit the alarm and select Trigger if ALL of the following conditions are satisfied.
- C. Create two separate alarms, one for CPU and one for memory and link them together with ESXCLI.
- D. Delete the existing alarm and create a new event based alarm.

**Correct Answer:** A

**Section:** (none)

**Explanation**

**Explanation/Reference:**

#### QUESTION 180

What may be a cause for failure to unmount an NFS datastore?

- A. It has active snapshot files.
- B. It is being used for High Availability (HA) heartbeat.
- C. It is part of a Cluster.
- D. It is managed by Distributed Resource Scheduler (DRS).

**Correct Answer:** A

**Section:** (none)

**Explanation**

**Explanation/Reference:**

#### QUESTION 181

Which two statements are true about deploying and using vSphere Replication? (Choose two.)

- A. ESXi hosts managed by a single vCenter Server instance require a connection between the two vSphere Replication appliances.
- B. Sites managed by different vCenter Server instances require a connection between the two vSphere Replication appliances.
- C. Sites managed by different vCenter Server instances require the use of Site Recovery Manager and a connection between the two vSphere Replication appliances.
- D. ESXi hosts managed by a single vCenter Server instance require a single vSphere Replication appliance.

**Correct Answer:** BD

**Section:** (none)

**Explanation**

**Explanation/Reference:**

#### QUESTION 182

A Fault Tolerance (FT) virtual machine with four vCPUs is experiencing high latency when performing ICMP and Application tests.

What are three potential causes that may be attributing to this latency? (Choose three.)

- A. The FT network has insufficient bandwidth and is running on a 1GB Link.
- B. The FT network is on a particularly high latency link.
- C. The FT network has been configured with Network I/O Control.

- D. The FT virtual machine is running an e1000 network adapter.
- E. The FT virtual machine is running on poor performing network-based storage.

**Correct Answer:** ABC

**Section:** (none)

**Explanation**

**Explanation/Reference:**

Reference: <https://docs.vmware.com/en/VMware-vSphere/6.5/com.vmware.vsphere.troubleshooting.doc/GUID-6F893381-BD0B-4825-B4CD-414854A9D9D9.html>

### QUESTION 183

VMware tools is failing to install on a Microsoft Windows virtual machine.

What are two possible situations that would prevent the installation? (Choose two.)

- A. The VMware tools installation media is corrupt.
- B. The incorrect Operating System was selected in the virtual machine options.
- C. The software prerequisites have not been installed.
- D. The prerequisite services have not been started.

**Correct Answer:** AB

**Section:** (none)

**Explanation**

**Explanation/Reference:**

### QUESTION 184

What is true regarding datastores on ESXi 6.x?

- A. NFS 4.1 datastore does not support Fault Tolerance (FT)
- B. VMFS3 and VMFS5 datastores can be newly created
- C. NFS datastore can be concurrently mounted using NFS 4.1 on one host and NFS on another
- D. NFS 3.0 datastore does not support Fault Tolerance (FT)

**Correct Answer:** B

**Section:** (none)

**Explanation**

**Explanation/Reference:**

**QUESTION 185**

Which two statements are true regarding VMware vSphere Flash Read Cache (vFRC)? (Choose two.)

- A. Cache fills and cache evictions happen in the granularity of a cache block size.
- B. vFRC caches data from both read and write I/Os, but write I/Os are always serviced by the underlying storage.
- C. vFRC caches data from both read and write I/Os, but write I/Os are always serviced by the underlying cache data.
- D. Cache fills and cache evictions happen in the granularity of the disk block size.

**Correct Answer:** AB

**Section:** (none)

**Explanation**

**Explanation/Reference:**

Reference: <http://www.yellow-bricks.com/2013/09/11/frequently-asked-questions-vsphere-flash-read-cache/>

**QUESTION 186**

An administrator is unable to login to vCenter Server when using the vSphere web client.

The administrator successfully accessed vCenter Server using the client earlier the same day.

What is the most appropriate first step the administrator should take to resolve this issue?

- A. Verify the web browser being used has Adobe Flash plugin version 11.5 or later
- B. Verify the vCenter Single Sign-On service is running on the vCenter Server
- C. Verify the vSphere Web Server service is running on the vCenter Server
- D. Verify the administrator has permissions configured in vCenter Server

**Correct Answer:** B

**Section:** (none)

**Explanation**

**Explanation/Reference:**

**QUESTION 187**

An organization has configured Distributed Power Management (DPM) on a vSphere 6 cluster. The organization wants to be alerted when an ESXi host has been powered down by DPM.

Which two options represent the type and name of the alarm that would accomplish this? (Choose two.)

- A. DrsEnteringStandbyModeEvent
- B. DrsEnteredStandbyModeEvent
- C. Event-based
- D. Condition-based

**Correct Answer:** BC

**Section:** (none)

**Explanation**

**Explanation/Reference:**

Reference: <https://docs.vmware.com/en/VMware-vSphere/6.5/com.vmware.vsphere.resmgmt.doc/GUID-DE5EF6EA-97F0-43E9-8BD5-2A45A64445BC.html>

#### QUESTION 188

A user is trying to retrieve objects from a SharePoint server and finds the request is taking an excessive amount of time. An administrator tries to isolate the issue and notes the following:

- Application performance is poor when compared to virtual machines on other hosts.
- Performance improves when the virtual machine is moved to another host.

The virtual machine encounters higher than expected CPU %Ready times.

What conclusion can be reached regarding the performance issues for this virtual machine?

- A. Host Power Management is directly impacting virtual machine performance.
- B. The virtual machine has a large number of snapshots.
- C. The Path Selection Policy for the storage device is set differently on the affected host.
- D. Network I/O control is configured for the portgroup.

**Correct Answer:** A

**Section:** (none)

**Explanation**

**Explanation/Reference:**

Reference: <https://kb.vmware.com/s/article/1018206>

#### QUESTION 189

Which three are architecture components of vRealize Operations? (Choose three.)

- A. Identity Server
- B. Administrative Server
- C. Analytics Server D. Database Server
- E. Connection Broker

**Correct Answer:** BCD

**Section:** (none)

**Explanation**

**Explanation/Reference:**

#### QUESTION 190

Which load balancing policy, previously limited to vSphere Distributed Switches, is now available on vSphere Standard Switches with vSphere 6.x?

- A. Route based on physical NIC workload
- B. Route based on IP Hash
- C. Route based on the originating virtual port
- D. Route based on Source MAC Hash



**Correct Answer:** A

**Section:** (none)

**Explanation**

**Explanation/Reference:**

Compare both standard and distributed switch in the 5.1 version documentation (first link) to the 6.0 version documentation (second link) below:

<https://pubs.vmware.com/vsphere-51/index.jsp?topic=%2Fcom.vmware.vsphere.networking.doc%2FGUID-D5EA6315-5DCD-463E-A701-B3D8D9250FB5.html>

<https://docs.vmware.com/en/VMware-vSphere/6.0/com.vmware.vsphere.networking.doc/GUID-D34B1ADD-B8A7-43CD-AA7E-2832A0F7EE76.html>

#### QUESTION 191

An administrator is unable to create the first group in a new vRealize Operations environment.

What is the likely cause of the problem?

- A. There are no group types defined.
- B. The group is not defined in SSO.



C. There are more than 32 group types defined.D. The description for the group is not provided.

**Correct Answer:** A

**Section:** (none)

**Explanation**

**Explanation/Reference:**

Reference: <https://www.vmware.com/support/vrops/doc/vrops-601-release-notes.html>

#### QUESTION 192

Which two statements are true about LACP support with the vSphere Distributed Switch? (Choose two.)

- A. LACP works with MAC hash load balancing.
- B. LACP does not work with port mirroring.
- C. LACP works with software iSCSI multipathing.
- D. LACP does not work with host profiles.

**Correct Answer:** BD

**Section:** (none)

**Explanation**

**Explanation/Reference:**

Reference <https://docs.vmware.com/en/VMware-vSphere/6.5/com.vmware.vsphere.networking.doc/GUID-3FDE1E96-9217-4FE6-8B76-6E3A64766828.html>

#### QUESTION 193

What three types of widgets can be added to a vRealize Log Insight Custom Dashboard? (Choose three.)

- A. badge widget
- B. event trends widget
- C. query list widget
- D. heatmap widget
- E. chart widget

**Correct Answer:** BCE

**Section:** (none)

**Explanation**

**Explanation/Reference:**

Reference <https://docs.vmware.com/en/vRealize-Log-Insight/4.3/com.vmware.log-insight.user.doc/GUID-ACF41E9A-4DC4-4071-AE45-FA296525D64C.html>

**QUESTION 194**

Which of the following options are configurable in a Resource Pool? (Choose two.)

- A. CPU affinity
- B. CPU Shares
- C. Startup/Shutdown order
- D. Memory Limit

**Correct Answer:** BD

**Section:** (none)

**Explanation**

**Explanation/Reference:**

**QUESTION 195**

What is the maximum supported number of vCPU per VM in VMware vSphere 6.5?



<https://vceplus.com/>

- A. 256
- B. 128
- C. 64
- D. 32

**Correct Answer:** B

**Section:** (none)

**Explanation**

**Explanation/Reference:**

Reference: <https://docs.vmware.com/en/VMware-vSphere/6.5/com.vmware.vsphere.configmax.doc/GUID-456C4E8F-E8CC-44FD-B121-18DA64BDCC87.html>

#### QUESTION 196

What are two valid methods to deploy an OVF template which consists of two or more VMs? (Choose two.)

- A. deploy on the standalone host connected to vCenter Server
- B. deploy on a vSphere DRS enabled cluster
- C. deploy on a vSphere HA enabled cluster
- D. deploy on the VMware vSphere Hypervisor

**Correct Answer:** BD

**Section:** (none)

**Explanation**

**Explanation/Reference:**

#### QUESTION 197

A vSphere Administrator uses vMotion to migrate a virtual machine between two ESXi hosts and notices that they can no longer ping the VM. What is the cause?

- A. The destination host has an incorrect VLAN tag on the virtual machine port group for the VM
- B. The destination host has two port groups with the same VLAN tag
- C. The virtual machine has RDMS attached
- D. There's an MTU mismatch

**Correct Answer:** B

**Section:** (none)

**Explanation**

**Explanation/Reference:**

#### QUESTION 198

Which three options are required to use vSphere DRS features successfully? (Choose three.)

- A. Shared Storage
- B. Processor Compatibility
- C. Datastore Cluster

- D. Shared VMFS Volume
- E. Resource Pools

**Correct Answer:** ABD

**Section:** (none)

**Explanation**

**Explanation/Reference:**

Reference: <https://docs.vmware.com/en/VMware-vSphere/6.0/com.vmware.vsphere.resmgmt.doc/GUID-CAF3CDC4-469F-4FA4-ACFD-24F5F36847EA.html>

#### QUESTION 199

When using vSAN, all the storage characteristics are specified by Storage Policies. Which parameter in vSAN Storage Policies can increase performance in a cache miss situation? (Choose the best answer.)

- A. Number of disk stripes per object
- B. Number of failures to tolerate
- C. Object space reservation (%)
- D. Force provisioning

**Correct Answer:** A

**Section:** (none)

**Explanation**

**Explanation/Reference:**

Reference: <https://blogs.vmware.com/virtualblocks/2016/09/19/vsan-stripes/>

#### QUESTION 200

What are the two minimum configurations of a disk group in a vSAN host? (Choose two.)

- A. 1 SSD drive for the caching tier and 1 or more HDDs for the capacity tier
- B. 1 SSD drive for the caching tier and 1 or more SSDs for the capacity tier
- C. 2 or more SSD drives for the caching tier and 2 or more SSDs for the capacity tier
- D. 2 or more SSD drives for the caching tier and 2 or more HDDs for the capacity tier

**Correct Answer:** AB

**Section:** (none)

**Explanation**



**Explanation/Reference:**

<https://docs.vmware.com/en/VMware-vSphere/6.5/com.vmware.vsphere.virtualsan.doc/GUID-4B738A10-4506-4D70-8339-28D8C8331A15.html>

**QUESTION 201**

A vSphere Administrator has an unresponsive ESXi 6.x host and only has access to the Direct Console User Interface. Which option would allow the Administrator to review live VMkernel logging? (Choose the best answer.)

- A. Alt + F8
- B. Alt + F7
- C. Alt + F11
- D. Alt + F12

**Correct Answer:** D

**Section:** (none)

**Explanation**

**Explanation/Reference:**

Reference: <https://kb.vmware.com/s/article/2148363>

**QUESTION 202**

What are two possible Startup Actions available to VMs within a vApp? (Choose two.)

- A. None
- B. Guest Shutdown
- C. Power OffD. Power On

**Correct Answer:** AD

**Section:** (none)

**Explanation**

**Explanation/Reference:**

Reference:

[https://docs.vmware.com/en/VMware-vSphere/6.5/com.vmware.vsphere.vm\\_admin.doc/GUID-0FAB05D4-22F7-4665-B42A-0FA4B360B398.html](https://docs.vmware.com/en/VMware-vSphere/6.5/com.vmware.vsphere.vm_admin.doc/GUID-0FAB05D4-22F7-4665-B42A-0FA4B360B398.html)

**QUESTION 203**

Which two statements are true using Resource Pools? (Choose two.)

- A. Resource Pools require vSphere HA to be enabled
- B. Resource Pools compartmentalize all resources in a datacenter

- C. Resource Pools require vSphere DRS to be enabled
- D. Resource Pools compartmentalize all resources in a cluster

**Correct Answer:** CD

**Section:** (none)

**Explanation**

**Explanation/Reference:**

Reference: <https://docs.vmware.com/en/VMware-vSphere/6.5/com.vmware.vsphere.resmgmt.doc/GUID-0F6C6709-A5DA-4D38-BE08-6CB1002DD13D.html>  
<https://communities.vmware.com/thread/145338>

#### QUESTION 204

Which two types of network traffic can be used for vSphere High Availability (HA)? (Choose two.)

- A. VM Network traffic
- B. vMotion network traffic
- C. VMware vSAN network traffic
- D. Management network traffic

**Correct Answer:** CD

**Section:** (none)

**Explanation**

**Explanation/Reference:**

Reference:

<https://docs.vmware.com/en/VMware-vSphere/6.5/com.vmware.vsphere.virtualsan.doc/GUID-D68890D8-841A-4BD1-ACA1-DA3D25B6A37A.html>

#### QUESTION 205

An Administrator has been tasked with deploying a new vSphere 6.x environment spanning multiple geographical locations while preserving a single source of authentication?

Which vCenter Server topology does VMware recommend for this scenario?

- A. Multi-Site SSO with:
  - an embedded PSC and vCenter Server instance at the primary location
  - no PSC at remote locations, vCenter Server instances only
- B. Multi-Site SSO with:
  - An embedded PSC and vCenter Server instance at each location
- C. Multi-Site SSO with:

One or more external PSC and vCenter Server instances at each location

D. Multi-Site with:

One or more external PSC at the primary location only

Embedded PSC and vCenter Server instances at remote locations

**Correct Answer:** C

**Section:** (none)

**Explanation**

**Explanation/Reference:**

Reference: <https://docs.vmware.com/en/VMware-vSphere/6.5/com.vmware.vsphere.install.doc/GUID-62CC201A-01ED-4116-8604-FF123481DAFC.html>

### QUESTION 206

A junior vSphere Administrator takes a snapshot before logging into a VM to preserve the current state in case of a problem. Assuming this process is repeated every day for over 30 days, what two results will happen? (Choose two.)

- A. The virtual machine can end up consuming more space on the datastore than assigned
- B. The virtual machine's performance will decrease
- C. The administrator will have backups for the entire month
- D. The administrator has successfully cloned the VM 30 times

**Correct Answer:** AB

**Section:** (none)

**Explanation**

**Explanation/Reference:**

Reference: <https://kb.vmware.com/s/article/1025279>

### QUESTION 207

When specifying a trigger action for an Alarm Definition, what two alarm state changes are available to be triggered on? (Choose two.)

- A. from normal to warning
- B. from normal to critical
- C. from critical to normal
- D. from critical to warning

**Correct Answer:** AD

**Section:** (none)

**Explanation**

**Explanation/Reference:**

Reference: <https://www.youtube.com/watch?v=8vWNVBDPcu4>

**QUESTION 208**

What field or option is required when creating a VM snapshot? (Choose the best answer.)

- A. Snapshot description
- B. Quiesce guest file system
- C. Snapshot the virtual machine's memory
- D. Snapshot name

**Correct Answer:** D

**Section:** (none)

**Explanation**

**Explanation/Reference:**

Reference: <https://kb.vmware.com/s/article/2032907>

**QUESTION 209**

In the vSphere environment there is a mix of ESXi hosts with versions 5.5, 6.0, and 6.5 in one DRS cluster. What is the highest virtual machine compatibility that can be used on all the hosts?

- A. vmx-10 B. vmx-9
- C. vmx-11
- D. vmx-13

**Correct Answer:** A

**Section:** (none)

**Explanation**

**Explanation/Reference:**

Reference: <https://kb.vmware.com/s/article/1003746>

**QUESTION 210**

Which three IP address may be pinged by the Test Management network feature in the ESXi hosts DCUI? (Choose three.)

- A. Secondary DNS server
- B. Default gateway



- C. NTP server
- D. Primary DNS server
- E. DHCP server

**Correct Answer:** ABD

**Section:** (none)

**Explanation**

**Explanation/Reference:**

Explanation:

To test if the ESXi host management network, press Enter.

ESXi performs the following tests:

- pings the subnet gateway specified
- pings the primary DNS server specified
- pings the alternate DNS server specified
- resolves the hostname of the ESXi host

Reference: [http://pubs.vmware.com/vsphere-50/index.jsp?topic=%2Fcom.vmware.vsa.doc\\_10%2FGUID-B14C1BD3-AB4E-4A5F-AAEB-8A2856B19FC1.html](http://pubs.vmware.com/vsphere-50/index.jsp?topic=%2Fcom.vmware.vsa.doc_10%2FGUID-B14C1BD3-AB4E-4A5F-AAEB-8A2856B19FC1.html)

#### QUESTION 211

By using vSphere Standard Switch, what is the maximum number of port groups allowed per host?

- A. 1000 B. 2000
- C. 1024
- D. 900
- E. 512

**Correct Answer:** E

**Section:** (none)

**Explanation**

**Explanation/Reference:**

Reference: <https://www.vmware.com/pdf/vsphere6/r65/vsphere-65-configuration-maximums.pdf>

#### QUESTION 212

What ESXi command line command can be used to troubleshoot basic network connectivity?

- A. vmkping

- B. vim-cmd
- C. vmware- lv
- D. chconfig

**Correct Answer:** A

**Section:** (none)

**Explanation**

**Explanation/Reference:**

Reference: <https://kb.vmware.com/s/article/2020669>

