

2V0-602.exam.220q

Number: 2V0-602
Passing Score: 800
Time Limit: 120 min



Website: <https://vceplus.com>
VCE to PDF Converter: <https://vceplus.com/vce-to-pdf/>
Facebook: <https://www.facebook.com/VCE.For.All.VN/>
Twitter : https://twitter.com/VCE_Plus

<https://vceplus.com/>

2V0-602

VMware vSphere 6.5 Foundations

Exam A

QUESTION 1

What three steps are necessary to enable Jumbo Frames for use with an iSCSI storage array? (Choose three.)

- A. Configure the MTU on the physical switch.
- B. Configure the MTU on the virtual switch.
- C. Configure the MTU on the VTEP.
- D. Configure the MTU on the LAG group.
- E. Configure the MTU on the VMKernel port.

Correct Answer: ABE

Section: (none)

Explanation

Explanation/Reference:

Reference: <https://kb.vmware.com/s/article/1007654>

QUESTION 2

A virtual machine loses network connectivity after vMotion.



<https://vceplus.com/>

Which two troubleshooting tasks can be performed? (Choose two.)

- A. Verify virtual switch option Notify Switches is set to Yes.
- B. Ensure that Enhanced vMotion Compatibility has been configured.
- C. Change the teaming policy to active/standby mode.
- D. Ensure that the virtual machine is in the proper VLAN ID.

Correct Answer: AD

Section: (none)

Explanation**Explanation/Reference:**

Reference: <https://kb.vmware.com/s/article/1007464>

QUESTION 3

Which statement is a requirement for Storage vMotion?

- A. The source and destination VMDKs must be of the same provisioning type.
- B. The virtual machine cannot contain any raw device mappings (RDMs).
- C. Virtual disks must not be larger than 2TB.
- D. The host on which the virtual machine is running must have access to the source and target datastores.

Correct Answer: D

Section: (none)

Explanation**Explanation/Reference:**

Reference: <https://docs.vmware.com/en/VMware-vSphere/6.5/com.vmware.vsphere.vcenterhost.doc/GUID-A16BA123-403C-4D13-A581-DC4062E11165.html>

QUESTION 4

Which two options can be leveraged to configure a remote syslog server for an ESXi 6.x host? (Choose two.)

- A. vRealize Configuration Manager
- B. vRealize Automation
- C. Host Profiles
- D. vSphere Web Client

Correct Answer: CD

Section: (none)

Explanation**Explanation/Reference:**

Reference: https://kb.vmware.com/selfservice/microsites/search.do?language=en_US&cmd=displayKC&externalId=2003322

QUESTION 5

What three steps must be taken when removing a host from a vSAN-enabled cluster? (Choose three.)

- A. Remove disks from diskgroups, remove disk groups.

- B. Create at least one vSphere Standard Switch.
- C. Remove VMKernel port with vSAN traffic checkbox checked.
- D. Remove the host from vSAN cluster.
- E. Place the host into maintenance mode with Full Migration option selected.

Correct Answer: CDE

Section: (none)

Explanation

Explanation/Reference:

Reference: <http://www.yellow-bricks.com/2014/01/14/remove-host-virtual-san-cluster/>

QUESTION 6

What will happen to the VM when a vSphere Administrator returns to a snapshot that was created without memory on the running VM?

- A. VM will be rebooted
- B. VM will be running in the state that it was at the time the snapshot creation
- C. VM will be powered on
- D. VM will be powered off

Correct Answer: D

Section: (none)

Explanation

Explanation/Reference:

Reference: <https://kb.vmware.com/s/article/1015180>

QUESTION 7

Which two options are requirements to perform a migration between vCenter Server instances? (Choose two.)

- A. The vCenter Server servers must be time-synchronized.
- B. The ESXi hosts must be version 5.5 or later.
- C. The vCenter Servers must be version 6.0 or later.
- D. The vCenter Server must be in the same single Sign-On domain.
- E. The ESXi hosts must have vSphere Standard, Advanced, or Enterprise Plus licensing.

Correct Answer: AC

Section: (none)

Explanation**Explanation/Reference:**

Reference: <https://pubs.vmware.com/vsphere-60/index.jsp#com.vmware.vsphere.vcenterhost.doc/GUID-DAD0C40A-7F66-44CF-B6E8-43A0153ABE81.html>

QUESTION 8

An Administrator would like to take advantage of the new Automatic UNMAP feature in VMFS6. All of the existing datastores are connected via iSCSI and formatted with VMFS5.

In order to minimize disruption and maintain some of the existing VMFS5 volumes, which two steps can be taken to leverage the UNMAP feature in VMFS6? (Choose two.)

- A. Use Storage vMotion to migrate your workloads to the new VMFS6 datastore.
- B. Create a new VMFS6 datastore.
- C. Use Storage DRS to put the VMFS5 datastore into maintenance mode.
- D. Perform an inline upgrade on each of your VMFS5 volumes.

Correct Answer: AB

Section: (none)

Explanation**Explanation/Reference:**

Reference: <https://kb.vmware.com/s/article/2147824>

**QUESTION 9**

A Long-Distance vMotion migration cannot complete.

Which three situations could cause this? (Choose three.)

- A. The license currently in use for the two hosts in vSphere Enterprise Edition.
- B. The round-trip time between the hosts is greater than 150 milliseconds.
- C. The virtual machine is configured to use Virtual NVMe disks.
- D. The vMotion traffic to the destination host is on the default TCP/IP stack.
- E. The license currently in use for the two hosts is vSphere Enterprise Plus Edition.

Correct Answer: ABD

Section: (none)

Explanation

Explanation/Reference:

Reference: <https://kb.vmware.com/s/article/2106949>

QUESTION 10

Which Distributed Switch Load Balancing option requires configuration of the physical Ethernet switch to operate properly?

- A. Route based on originating virtual port
- B. Use explicit failover
- C. Route based on IP hash
- D. Route based on physical NIC load
- E. Route based on source MAC hash

Correct Answer: C

Section: (none)

Explanation

Explanation/Reference:

Reference: Reference: <https://docs.vmware.com/en/VMware-vSphere/6.5/com.vmware.vsphere.networking.doc/GUID-73AB2E00-FE02-4D1B-970F7D2F21F52825.html>

QUESTION 11

Which two choices are valid ways to patch an ESXi host? (Choose two.)



<https://vceplus.com/>

- A. utilizing the esxcli Command Line Interface
- B. vSphere Update Manager
- C. vRealize Operations Manager
- D. configuring a Host Profile

Correct Answer: AB

Section: (none)

Explanation

Explanation/Reference:

Reference: <https://www.ivobeerens.nl/2017/02/15/patch-vmware-esxi-6-5-hosts-command-line/>

QUESTION 12

Which three virtual hardware configurations will allow snapshots? (Choose three.)

- A. Physical Mode RDMs
- B. bus sharing
- C. Full memory reservation
- D. Virtual Mode RDMs
- E. 16+ vCPU

Correct Answer: CDE

Section: (none)

Explanation

Explanation/Reference:

Reference: https://docs.vmware.com/en/VMware-vSphere/6.5/com.vmware.vsphere.vm_admin.doc/GUID-53F65726-A23B-4CF0-A7D5-48E584B88613.html

QUESTION 13

What tool is utilized for detailed performance monitoring of the vCenter Server Appliance?

- A. vim-cmd
- B. esxtop
- C. Perfmon
- D. vimtop

Correct Answer: D

Section: (none)

Explanation

Explanation/Reference:

Reference: <https://www.virtuallyghetto.com/2015/02/vimtop-esxtop-for-the-vcsa-6-0.html>



QUESTION 14

Which is the VDP appliance available storage configuration maximum?

- A. 2 TB
- B. 62 TB
- C. 8 TB
- D. 4 TB

Correct Answer: C

Section: (none)

Explanation

Explanation/Reference:

Reference: <https://docs.vmware.com/en/VMware-vSphere/6.5/vmware-data-protection-administration-guide-61.pdf>

QUESTION 15

A vSphere Administrator has been tasked with ensuring that 500 virtual desktops are unable to communicate with one another, but can communicate with required services.

Which two solutions does VMware recommend? (Choose two.)

- A. VMware NSX Distributed Firewall
- B. Private VLAN
- C. vSphere Host Firewall
- D. Port Filtering

Correct Answer: AB

Section: (none)

Explanation

Explanation/Reference:

QUESTION 16

What is the maximum supported number of Virtual SCSI adapters per VM in vSphere 6.5?

- A. 8
- B. 4

- C. 2
- D. 6

Correct Answer: B

Section: (none)

Explanation

Explanation/Reference:

Reference: <https://www.vmware.com/pdf/vsphere6/r65/vsphere-65-configuration-maximums.pdf> (page 9)

QUESTION 17

A VMware vSphere 6.x Administrator is tasked with expanding a current vRealize Log Insight Deployment.

What two steps will accomplish this task? (Choose two.)

- A. Run the startup wizard and select Join Existing Deployment.
- B. Login to the vRealize Log Insight Management UI and select Add New Node.
- C. Deploy another vRealize Log Insight server from the OVF.
- D. Deploy and install vRealize Log Insight on a new Linux virtual machine.

Correct Answer: AB

Section: (none)

Explanation

Explanation/Reference:

QUESTION 18

Which two resource types can be limited on the vApp level? (Choose two.)

- A. CPU
- B. Storage
- C. MemoryD. Network

Correct Answer: AC

Section: (none)

Explanation

Explanation/Reference:

Reference https://docs.vmware.com/en/VMware-vSphere/5.5/com.vmware.vsphere.vm_admin.doc/GUID-9902FD4C-4727-43F7-AEAF-901DA4CB4D60.html

QUESTION 19

When trying to export the vApp to the OVF, the option is grayed out.

What solution allows for the export of a vApp?

- A. PowerOff the vApp.
- B. The vApp is marked as Non-Exportable.
- C. Logout of the vSphere Client and use the vSphere WebClient.
- D. Change the portgroup where the VMs are connected to.

Correct Answer: A

Section: (none)

Explanation

Explanation/Reference:

QUESTION 20

After reconfiguring VUM in the vCenter Server Appliance, a vSphere Administrator must restart the Update Manager service.

Which VMware recommended action will let the Administrator accomplish this task?

- A. On the vSphere Web Client Home page, click System Configuration, then Nodes. Select vCenter Server and, from the Actions menu, select Reboot.
- B. On the vSphere Web Client Home page, click System Configuration, then Services. Select VMware vSphere Update Manager service, and from the Actions menu select Restart.
- C. On the vSphere Web Client Home page, click Update Manager. Select the Update Manager server and use the Actions menu to restart it.
- D. Log in to the vCenter Server Appliance Management UI and reboot the VCSA.

Correct Answer: B

Section: (none)

Explanation

Explanation/Reference:

Reference: https://pubs.vmware.com/vsphere-65/index.jsp?topic=%2Fcom.vmware.vsphere.update_manager.doc%2FGUID-DCC3EABE-4973-48E5-8B7DE53598F0E12A.html

QUESTION 21

Which two options does VM Monitoring use to determine if a virtual machine should be reset? (Choose two.)

- A. Network activity from the virtual machine
- B. I/O activity from the virtual machine
- C. CPU activity from the virtual machine
- D. Heartbeats from VMware Tools

Correct Answer: BD

Section: (none)

Explanation

Explanation/Reference:

Reference https://pubs.vmware.com/vsphere-50/index.jsp?topic=%2Fcom.vmware.vsphere.avail.doc_50%2FGUID-62B80D7A-C764-40CB-AE59752DA6AD78E7.html

QUESTION 22

Which option was added to the load balancing calculations of DRS in vSphere 6.5?

- A. Network
- B. Memory
- C. Storage
- D. CPU



Correct Answer: B

Section: (none)

Explanation

Explanation/Reference:

Explanation:

Memory Metric for Load Balancing: DRS uses Active memory + 25% as its primary metric when calculating memory load on a host. The Consumed memory vs active memory will cause DRS to use the consumed memory metric rather than Active. This is beneficial when memory is not over-allocated. As a side effect, the UI show the hosts be more balanced.

Reference: <https://blogs.vmware.com/vsphere/2016/10/whats-new-in-vsphere-6-5-host-resource-management-and-operations.html>

QUESTION 23

What are two requirements needed to enable a 4 vCPU virtual machine with Fault Tolerance? (Choose two.)

- A. vSphere Enterprise Plus license

- B. 10 GbE uplink for FT logging network
- C. vSphere Standard license
- D. 1 GbE uplink for FT logging network

Correct Answer: AB

Section: (none)

Explanation

Explanation/Reference:

Reference: <https://pubs.vmware.com/vsphere-60/index.jsp?topic=%2Fcom.vmware.vsphere.avail.doc%2FGUID-57929CF0-DA9B-407A-BF2E-E7B72708D825.html>

QUESTION 24

Which two databases are supported for the vCenter Server Appliance 6.x? (Choose two.)



<https://vceplus.com/>

- A. PostgreSQL
- B. Oracle
- C. DB2
- D. Microsoft SQL Server

Correct Answer: AB

Section: (none)

Explanation

Explanation/Reference:

Reference: <https://pubs.vmware.com/vsphere-60/index.jsp?topic=%2Fcom.vmware.vsphere.upgrade.doc%2FGUID-8E23C952-56B1-43CB-A1D3F3259FD73FA4.html>

QUESTION 25

Which three functions are provided by Storage DRS? (Choose three.)

- A. space load balancing among datastores within a datastore cluster
- B. VM disk sizing recommendations for virtual machines in datastores within a datastore cluster
- C. I/O load balancing among datastores within a datastore cluster
- D. snapshot consolidation recommendations among datastores within a datastore cluster
- E. initial placement recommendations for virtual disks based on space and I/O workload

Correct Answer: ACE

Section: (none)

Explanation

Explanation/Reference:

Reference: <https://pubs.vmware.com/vsphere-51/index.jsp?topic=%2Fcom.vmware.vsphere.resmgmt.doc%2FGUID-19B6F05F-D285-4ACB-9B1324A1DE9B4058.html>

QUESTION 26

A vSphere Administrator has been tasked with configuring Jumbo Frames and the current environment is based on vSphere Standard Switch. Which three steps are required?

- A. Verify the physical switches in the environment have been properly configured.
- B. Configure the Switch MTU.
- C. Configure the Port Group MTU.
- D. Migrate to a Distributed vSwitch.
- E. Configure the Distributed vSwitch MTU.

Correct Answer: ABC

Section: (none)

Explanation

Explanation/Reference:

Reference: <https://pubs.vmware.com/vsphere-55/index.jsp?topic=%2Fcom.vmware.vsphere.networking.doc%2FGUID-E5DDE8D4-A6DA-4F7E-A1E8F611E98731FC.html>

QUESTION 27

What is required to create a vSphere Distributed Switch? (Choose two.)

- A. A minimum of two physical uplinks is required.

- B. vSphere Enterprise Plus licensing is required.
- C. The host is added to a vCenter Server.
- D. Login to the ESXi Host with the Root account.

Correct Answer: AC

Section: (none)

Explanation

Explanation/Reference:

QUESTION 28

A VMware vSphere 6.x Administrator is creating an Alarm Action.
What are three configurable actions? (Choose three.)

- A. Shutdown Guest
- B. Restart Guest
- C. Send a notification email
- D. Migrate VM
- E. Run a command



Correct Answer: CDE

Section: (none)

Explanation

Explanation/Reference:

Reference:

https://pubs.vmware.com/vsphere-4-esx-vcenter/index.jsp#com.vmware.vsphere.dcadmin.doc_41/vsp_dc_admin_guide/working_with_alarms/r_default_alarm_actions.html

QUESTION 29

What two new features are introduced with virtual machine compatibility version 13? (Choose two.)

- A. IDE hot plug support
- B. VMXNET 4
- C. Virtual Memory maximum 6128 GB
- D. Virtual NVMe

Correct Answer: CD

Section: (none)

Explanation

Explanation/Reference:

Reference: https://pubs.vmware.com/vsphere-65/index.jsp?topic=%2Fcom.vmware.vsphere.vm_admin.doc%2FGUID-789C3913-1053-4850-A0F0E29C3D32B6DA.html

QUESTION 30

Which three factors should an Administrator take into account when determining the required VDP appliance size and number of appliances? (Choose three.)

- A. retention periods (daily, weekly, monthly, yearly)
- B. VMs guest OS family and version
- C. typical change rate
- D. Number and type (database, file system) of VMs

Correct Answer: ACD

Section: (none)

Explanation

Explanation/Reference:

Reference: <https://pubs.vmware.com/vsphere-60/topic/com.vmware.ICbase/PDF/vmware-data-protection-administration-guide-60.pdf>

QUESTION 31

Which two statements are correct when licensing an ESXi 6.x host? (Choose two.)

- A. ESXi licenses can be assigned utilizing the ESXi host client.
- B. Bulk licensing requires vSphere PowerCLI.
- C. Bulk licensing requires vSphere Auto Deploy to be enabled.
- D. ESXi licenses can only be applied to ESXi hosts connected to a vCenter Server.

Correct Answer: AB

Section: (none)

Explanation

Explanation/Reference:

QUESTION 32

Which three IP addresses may be pinged by the Test Management Network feature in the ESXi hosts DCUI? (Choose three.)

- A. NTP server
- B. Secondary DNS server
- C. DHCP server
- D. Default gateway
- E. Primary DNS server

Correct Answer: BDE

Section: (none)

Explanation

Explanation/Reference:

Reference: <https://docs.vmware.com/en/VMware-vSphere/6.5/com.vmware.vsphere.install.doc/GUID-0CDC0898-34C2-4DF5-B7F8-49BEE14D0A85.html>

QUESTION 33

A vSphere Administrator notices that sometimes they receive poor network throughput for multiple port groups that reside on a vSwitch with multiple physical uplinks (vmnics). The configuration on the ESXi host is identical to other hosts that are working properly in the same cluster.

What should be done next?

- A. Restart Management agents in ESXi Using Direct Console User Interface (DCUI).
- B. Add additional port groups to the vSwitch.
- C. Alter the failover order of the vmnics until a bad vmnic is found.
- D. Add additional resources to the virtual machines that are powered on.

Correct Answer: A

Section: (none)

Explanation

Explanation/Reference:

QUESTION 34

When managing search queries in vRealize Log Insight, what three actions can be performed? (Choose three.)

- A. Share the Current Query

- B. Load a Query
- C. Take a Snapshot of a Query
- D. Pause the Current Query
- E. Duplicate a Query

Correct Answer: ABC

Section: (none)

Explanation

Explanation/Reference:

Reference: <https://pubs.vmware.com/log-insight-30/index.jsp#com.vmware.log-insight.user.doc/GUID-0B168CCD-B387-4926-BC7F-39263D8F9CCE.html?resultof=%2522%2573%2565%2561%2572%2563%2568%2522%2520%2522%2571%2575%2565%2572%2569%2565%2573%2522%2520%2522%2571%2575%2565%2572%2569%2522%2520>

QUESTION 35

A vSphere Administrator notices that the newly deployed ESXi hosts cannot stay in a connected state in vCenter Server for more than 60 seconds at a time. The Administrator knows that the hardware is in good health and that the ESXi hypervisors are properly configured.

What is the source of the problem?

- A. The hosts are not a part of a vSphere Distributed Switch.
- B. Firewall rules that have too many ports open.
- C. Firewall rules preventing hosts from sending heartbeats to vCenter Server.
- D. The hosts do not have persistent logging configured.

Correct Answer: C

Section: (none)

Explanation

Explanation/Reference:

Reference: https://kb.vmware.com/selfservice/search.do?cmd=displayKC&docType=kc&docTypeID=DT_KB_1_1&externalId=1029919

QUESTION 36

What is true about a virtual machine with (orphaned) appended to the display name?

- A. The virtual machine has been cloned and removed from vCenter Server's inventory.
- B. The template that the virtual machine was created from no longer exists.
- C. The virtual machine creator no longer wants the virtual machine and has marked it for deletion.

D. The virtual machine exists in the vCenter Server database, but the ESXi hosts no longer recognize it.

Correct Answer: D

Section: (none)

Explanation

Explanation/Reference:

Reference: https://pubs.vmware.com/vsphere-50/index.jsp?topic=%2Fcom.vmware.vsphere.troubleshooting.doc_50%2FGUID-BFD8C9BC-30FB-4A92-AFEC2FC9FF387920.html

QUESTION 37

Which actions take place when DRS Automation is set to Partially Automated?

- A. Initial placement: Recommended host(s) is displayed.
Migration: Recommendation is executed automatically.
- B. Initial placement: Automatic.
Migration: Recommendation is displayed.
- C. Initial placement: Recommended host(s) is displayed. Migration: Recommendation is displayed.
- D. Initial placement: Automatic.
Migration: Recommendation is executed automatically.

Correct Answer: B

Section: (none)

Explanation

Explanation/Reference:

Reference: <https://pubs.vmware.com/vsphere-51/index.jsp?topic=%2Fcom.vmware.vsphere.resmgmt.doc%2FGUID-E83A6B62-37F8-46D0-8D0AD6A9181979F2.html>

QUESTION 38

What is the VMware recommended way to distribute storage I/O loads across multiple paths to minimize downtime and remove potential bottlenecks?

- A. Enable Storage I/O Control.
- B. Configure storage replication.
- C. Configure multipathing.
- D. Enable storage DRS and configure datastore clusters.

Correct Answer: C

Section: (none)

Explanation

Explanation/Reference:

QUESTION 39

A VMware vSphere 6.x Administrator is implementing a new eight-node cluster for business critical applications. Each server will be configured with two 10 GbE network adapters and will utilize iSCSI for storage on one subnet.

Which feature is required to implement this solution?

- A. Storage DRS
- B. LACP
- C. Network I/O Control
- D. VMkernel Port Binding



D

QUESTION 40

What is the maximum supported RAM per virtual machine (VM) in vSphere 6.5?

- A. 6128 GB
- B. 2048 GB
- C. 8192 GB
- D. 4096 GB

Correct Answer: A

Section: (none)

Explanation

Explanation/Reference:

Reference: <https://www.vmware.com/pdf/vsphere6/r65/vsphere-65-configuration-maximums.pdf> (page 9)

QUESTION 41

Which two options can change the thin provisioned disk to thick provisioned? (Choose two.)

- A. Use vMotion to migrate the VM to another ESXi host without moving the disks.
- B. Use Storage vMotion of the running VM to the same datastore and select Thick Provision.
- C. Power off the VM, locate the VMDK disk in the Datastore browser, right-click that and select Inflate.
- D. Use Storage vMotion of the running VM to another datastore and select Thick Provision.

Correct Answer: CD

Section: (none)

Explanation

Explanation/Reference:

Reference https://pubs.vmware.com/vsphere-65/index.jsp?topic=%2Fcom.vmware.vsphere.vm_admin.doc%2FGUID-E8F50BEC-F575-4AB1-BC77D9A13CDBDCF7.html

Correct Answer:

Section: (none)

Explanation

Explanation/Reference:

QUESTION 42

What two utilities provide a VMware vSphere 6.x Administrator a detailed look at how ESXi uses resources in real time? (Choose two.)

- A. Esxtop
- B. Vim-cmd
- C. Resxtop
- D. Esxcli

Correct Answer: AC

Section: (none)

Explanation

Explanation/Reference:

Reference: <https://pubs.vmware.com/vsphere-51/index.jsp?topic=%2Fcom.vmware.vsphere.monitoring.doc%2FGUID-A31249BF-B5DC-455B-AFC77D0BBD6E37B6.html>

QUESTION 43

What two files are created when the Take snapshot operation is executed? (Choose two.)

- A. .delta.vmdk
- B. .nvram
- C. .vmsn
- D. .lck

Correct Answer: AC

Section: (none)

Explanation

Explanation/Reference:

Reference: https://pubs.vmware.com/vsphere-51/index.jsp?topic=%2Fcom.vmware.vsphere.vm_admin.doc%2FGUID-38F4D574-ADE7-4B80-AEAB-7EC502A379F4.html

QUESTION 44

Which three object types can be stored in the Content Library? (Choose three.)

- A. vDS backups
- B. VM templates
- C. vAPP templates
- D. ISO files

BCD

Reference: <https://virtualizationreview.com/articles/2015/07/02/how-to-use-the-vcenter-6-content-library.aspx>

QUESTION 45

A vSphere Administrator sees the alarm:

vSphere HA virtual machine failed to failover

This occurred for a number of virtual machines on a particular ESXi host in a cluster with vSphere High Availability (HA) enabled. The virtual machines guest operating systems never reported a power event.



<https://vceplus.com/>

What happened?

- A. The virtual machines were vMotioned off of the ESXi host.
- B. The ESXi host is still running but has disconnected from the network.
- C. The ESXi host failed and vSphere HA successfully failed over the virtual machines.
- D. The previous virtual machine cloning operations failed to complete.

Correct Answer: C

Correct Answer:

Section: (none)

Explanation

Explanation/Reference:

Section: (none)

Explanation

Explanation/Reference:

QUESTION 46

Which three options are available for remediation with Proactive HA? (Choose three.)

- A. Quarantine mode for moderate and Power off for severe failure.
- B. Quarantine mode for all failures.
- C. Power off for all failures.
- D. Quarantine mode for moderate and Maintenance mode for severe failure.
- E. Maintenance mode for all failures.

Correct Answer: BDE

Section: (none)

Explanation



Explanation/Reference:

Reference: <https://docs.vmware.com/en/VMware-vSphere/6.5/com.vmware.vsphere.avail.doc/GUID-3E3B18CC-8574-46FA-9170-CF549B8E55B8.html>

QUESTION 47

Virtual machines do not power on after completing the clone or deploy from template workflow in the vSphere Web Client.

What two solutions will fix this problem? (Choose two.)

- A. Increase the virtual machine memory reservation.
- B. Increase the amount of memory assigned to the virtual machine.
- C. Increase the EVC compatibility mode setting.
- D. Increase the datastore size where the virtual machine swap file exists.

Correct Answer: AD

Section: (none)

Explanation

Explanation/Reference:

Reference: https://pubs.vmware.com/vsphere-50/index.jsp?topic=%2Fcom.vmware.vsphere.troubleshooting.doc_50%2FGUID-FFE2CB60-A35D-4FCD-8D13DF538F183692.html

QUESTION 48

What two scenarios will prevent extending a VMDK that is attached to a powered on VM? (Choose two.)

- A. VMDK has snapshots present.
- B. VMDK is connected using LSI logic SAS controller.
- C. VMDK is connected using IDE controller.
- D. VMDK is running an unsupported Guest OS.

AD

Reference: <https://kb.vmware.com/s/article/1004071>

QUESTION 49

ESXi supports which three iSCSI adapters? (Choose three.)

- A. Software
- B. Protocol Endpoint
- C. FCoE
- D. Dependent Hardware
- E. Independent Hardware

Correct Answer: ADE

Section: (none)

Explanation

Explanation/Reference:

Reference: <https://docs.vmware.com/en/VMware-vSphere/5.5/com.vmware.vsphere.storage.doc/GUID-C476065E-C02F-47FA-A5F7-3B3F2FD40EA8.html>

QUESTION 50

What two virtual hardware devices can be added to a powered on VM? (Choose two.)

- A. Virtual disk connected using SCSI controller

Correct Answer:

Section: (none)

Explanation

Explanation/Reference:

B. Virtual disk connected using IDE controller

C. Network adapter

D. Serial Port

Correct Answer: AC

Section: (none) Explanation

Explanation/Reference:

Reference: https://pubs.vmware.com/vsphere-4-esx-vcenter/index.jsp#com.vmware.vsphere.webaccess.doc_41/adding_hardware_to_a_virtual_machine/t_add_a_network_adapter.html

QUESTION 51

Which three options are available when applying a Customization Specification to an existing virtual machine? (Choose three.)

A. Modify a specification

B. Select an existing specification

C. Import a specification

D. Create a specification from an existing specification

E. Create a specification



Correct Answer: BDE

Section: (none)

Explanation

Explanation/Reference:

Reference: https://docs.vmware.com/en/VMware-vSphere/6.5/com.vmware.vsphere.vm_admin.doc/GUID-EB5F090E-723C-4470-B640-50B35D1EC016.html

QUESTION 52

A VMware vSphere 6.x Administrator is tasked with configuring vRealize Log Insight.

What three ports can be used for syslog? (Choose three.)

A. 514/UDP

B. 1514/TCP

- C. 8443/TCP
- D. 514/TCP
- E. 123/UDP

Correct Answer: ABD

Section: (none)

Explanation

Explanation/Reference:

Reference: <https://pubs.vmware.com/log-insight-43/index.jsp?topic=%2Fcom.vmware.log-insight.administration.doc%2FGUID-848E4804-3837-4D5E-956E2216B17376AD.html>

QUESTION 53

Which key combination will let a vSphere Administrator revert to the previous version or build of ESXi?



- A. Shift+R
- B. Ctrl+R
- C. Shift+V
- D. Ctrl+Z

Correct Answer: A

Section: (none) **Explanation**

Explanation/Reference:

Reference: <https://kb.vmware.com/s/article/1033604>

QUESTION 54

A vSphere Administrator notices that upgrading VMware Tools on a single VM fails. Upon closer inspection, the summary tab shows that the VMware Tools status is unmanaged.

What is true about this virtual machine?

- A. There are not any vSphere users that have permissions for the virtual machine.
- B. The VMware Tools are so old that ESXi fails to upgrade the tools.
- C. The VMware Tools were installed with non-default options chosen.
- D. The VMware tools installed is an Operating System specific Package (OSP).

Correct Answer: D

Section: (none)

Explanation

Explanation/Reference:

Reference: <https://www.slideshare.net/RamPrasadOhnu/vmware-toolsinstallationconfiguration>

QUESTION 55

Which password meets the default password requirements in ESXi 6.x?

- A. Xqavntthi3
- B. xQA!3h
- C. xTaMEhb!
- D. Xqa_hin3

Correct Answer: C

Section: (none) Explanation

Explanation/Reference:

QUESTION 56

Which two statements are true when configuring a virtual flash resources (vFlash)? (Choose two.)

- A. Virtual Machines cannot reside on the virtual flash resource.
- B. Only Shared Storage can be configured as a virtual flash resource.
- C. vSphere DRS does not support vFlash resources.
- D. vFlash resources are managed at the ESXi host level.

Correct Answer: AD

Section: (none) Explanation

Explanation/Reference:

QUESTION 57

When adding a new VLAN to an existing virtual distributed switch, which three steps are necessary? (Choose three.)

- A. Right click the vDS and select Distributed Port Group, then select New Distributed Port Group.
- B. Right click on the data center, select Distributed Switch, select New Distributed Switch.
- C. Specify the VLAN ID and VLAN type.
- D. Provide a name for the Distributed Port Group.
- E. Specify the number of physical uplinks from the vDS to the VLAN.

Correct Answer: ACD

Section: (none) Explanation

Explanation/Reference:

QUESTION 58

What is the maximum supporter number of vCPU per VM in VMware vSphere 6.5?

- A. 256
- B. 128

- C. 32
- D. 64

Correct Answer: B

Section: (none) **Explanation**

Explanation/Reference:

Reference: <https://www.vmware.com/pdf/vsphere6/r65/vsphere-65-configuration-maximums.pdf>

QUESTION 59

A vSphere Administrator has stated that currently Private VLAN is utilized to prevent cross-talk on the dedicated backup network.

What two actions are required to implement Private VLAN in VMware vSphere? (Choose two.)

- A. Configure Private VLAN at the dvPort Group.
- B. Upgrade to VMware vSphere Enterprise Plus.
- C. Enable Promiscuous Mode.
- D. Configure Private VLAN at the dvSwitch level.

Correct Answer: AC

Section: (none)

Explanation

Explanation/Reference:

QUESTION 60

What are two valid states for Compliance Status in VM Storage Policy? (Choose two.)

- A. Compliant
- B. Orphaned
- C. Invalid
- D. Out of Date

Correct Answer: AD

Section: (none) **Explanation**

Explanation/Reference:

Reference: <https://docs.vmware.com/en/VMware-vSphere/6.5/com.vmware.vsphere.storage.doc/GUID-133B65D0-CE10-45E7-BFA5-74CAD19E0DFD.html>



QUESTION 61

A VMware vSphere 6.x Administrator is looking at the following output from esxtop on an ESXi host:

2:24:33pm up 35 days 14:18, 819 worlds, 11 VMs, 28 vCPUs; CPU load average: 0.07, 0.07, 0.07										
ADAPTR PATH	NPTH	CMDS/s	READS/s	WRITES/s	MBREADS/s	MBWRTN/s	DAVG/cmd	KAVG/cmd	GAVG/cmd	QAVG/cmd
vmhba0 -	0	0.00	0.00	0.00	0.00	0.00	0.00	0.00	0.00	0.00
vmhba1 -	0	0.00	0.00	0.00	0.00	0.00	0.00	0.00	0.00	0.00
vmhba2 -	1	0.19	0.00	0.19	0.00	0.00	22.70	0.03	22.73	0.00
vmhba3 -	0	0.00	0.00	0.00	0.00	0.00	0.00	0.00	0.00	0.00
vmhba32 -	1	0.00	0.00	0.00	0.00	0.00	0.00	0.00	0.00	0.00
vmhba33 -	0	0.00	0.00	0.00	0.00	0.00	0.00	0.00	0.00	0.00
vmhba34 -	0	0.00	0.00	0.00	0.00	0.00	0.00	0.00	0.00	0.00
vmhba35 -	0	0.00	0.00	0.00	0.00	0.00	0.00	0.00	0.00	0.00
vmhba36 -	0	0.00	0.00	0.00	0.00	0.00	0.00	0.00	0.00	0.00
vmhba37 -	0	0.00	0.00	0.00	0.00	0.00	0.00	0.00	0.00	0.00
vmhba38 -	0	0.00	0.00	0.00	0.00	0.00	0.00	0.00	0.00	0.00
vmhba39 -	0	0.00	0.00	0.00	0.00	0.00	0.00	0.00	0.00	0.00
vmhba4 -	0	0.00	0.00	0.00	0.00	0.00	0.00	0.00	0.00	0.00
vmhba40 -	0	0.00	0.00	0.00	0.00	0.00	0.00	0.00	0.00	0.00
vmhba41 -	0	0.00	0.00	0.00	0.00	0.00	0.00	0.00	0.00	0.00

What does DAVG/cmd represent?

- A. Average device latency per command in milliseconds
- B. Average ESXi VMkernel latency per command in milliseconds
- C. Average queue latency per command in milliseconds
- D. Average guest operating system latency per command in milliseconds.

Correct Answer: A

Section: (none)

Explanation

Explanation/Reference:

Reference: <http://www.yellow-bricks.com/esxtop/>

QUESTION 62

Which two statements are Datastore Cluster requirements? (Choose two.)

- A. Datastore clusters can only contain VMFS datastores.

- B. Datastores shared across multiple data centers cannot be included in a datastore cluster.
- C. NFS and VMFS datastores cannot be combined in the same datastore cluster.
- D. Datastore clusters must contain three or more datastores.

Correct Answer: BC

Section: (none) **Explanation**

Explanation/Reference:

Reference: <https://pubs.vmware.com/vsphere-51/index.jsp?topic=%2Fcom.vmware.vsphere.resmgmt.doc%2FGUID-34A10B42-C79E-491C-A5AA99E3B5FA2278.html>

QUESTION 63

A vSphere Administrator just finished installing new software on the Windows vCenter Server and notices that vCenter Server services no longer start properly.

What two tasks should be done next? (Choose two.)

- A. Contact the server hardware manufacturer.
- B. Check for network port conflicts.
- C. Reinstall vCenter Server.
- D. Check the vCenter Server logs.



Correct Answer: BD

Section: (none) **Explanation**

Explanation/Reference:

QUESTION 64

A vSphere Administrator wants to enable Storage I/O Control. There is a mix of VMFS and NFS datastores. All of the VMFS datastores have hardware acceleration enabled. The Administrator attempts to create a new datastore cluster but is unable to add all of the datastores to the cluster.

What is the problem?

- A. NFS datastores cannot participate in a datastore cluster.
- B. One of the hosts is currently in maintenance mode.
- C. NFS and VMFS datastores cannot be mixed in a datastore cluster.
- D. Datastores with hardware acceleration enabled cannot participate in a datastore cluster.

Correct Answer: C

Section: (none)

Explanation

Explanation/Reference:

Reference: <https://docs.vmware.com/en/VMware-vSphere/6.5/com.vmware.vsphere.resmgmt.doc/GUID-34A10B42-C79E-491C-A5AA-99E3B5FA2278.html>

QUESTION 65

You need to add an object to an existing vApp using the vSphere Web Client. How is this accomplished?

- A. Create an Object Inside the vApp.
- B. Add an Object to a vApp.
- C. Add an Object to the Datastore the vApp is located in.
- D. Move all Objects to a new Datastore folder.

Correct Answer: AB

Section: (none)

Explanation

Explanation/Reference:

Explanation:

to add an object to an existing vApp using the vsphere web client, create an object inside vApp or you can add an object to a vApp.

https://pubs.vmware.com/vsphere-50/index.jsp?topic=%2Fcom.vmware.vsphere.vm_admin.doc_50%2FGUID-12FDA1A4-6214-463B-8D73-FE25454C642E.html

QUESTION 66

Which three items should be validated prior to installing ESXi 6.x? (Choose three.)

- A. Remote Storage has been disconnected.
- B. Installation media is available.
- C. Server hardware clock is set to UTC.
- D. Storage has been partitioned with a VMFS volume.
- E. Network cards have been setup to use Jumbo Frames.

Correct Answer: ABC

Section: (none)

Explanation

Explanation/Reference:

QUESTION 67

Which two badges are major badges in vRealize Operations? (Choose two.)

- A. Risk
- B. Efficiency
- C. Workload
- D. Faults

Correct Answer: AB

Section: (none)

Explanation

Explanation/Reference:

QUESTION 68

Which Single Sign-On deployment mode should an administrator use for two 6.x vCenter Servers configured with linked mode?

- A. Basic Single Sign-On with vCenter Server Heartbeat
- B. Multisite Single Sign-On
- C. Basic Single Sign-On
- D. Single Sign-On with Linked Mode



Correct Answer: B

Section: (none) **Explanation**

Explanation/Reference:

QUESTION 69

Refer to the Exhibit.

An administrator has been given requirements to configure vMotion for a new virtual machine. The configuration should:

Provide Network Redundancy Use VLAN 550

Be secured against anyone trying to spoof communication

The vSwitch1 configuration is shown in the Exhibit.

vmotion

All

Properties

Policies

Properties

Network label

vmotion

VLAN ID

None (0)

Security

Promiscuous mode

Reject

MAC address changes

Accept

Forged transmits

Accept

Traffic shaping

Average bandwidth

--

Peak bandwidth

--

Burst size

--

Teaming and failover

Load balancing

Route based on originating virtual port

Network failure detection

Link status only

Notify switches

Yes

Failback

Yes

Active adapters

vmnic3

Standby adapters

--

Unused adapters

vmnic2

Which three changes should be made to meet the stated requirements? (Choose three.)

- A. The VLAN ID must be set appropriately.
- B. The default values for MAC Address Changes and Forged Transmits must be altered.
- C. The teaming and failover adapters must be set appropriately.
- D. The Traffic Shaping configuration must be altered.
- E. The Load Balancing Policy must be set appropriately.

Correct Answer: ABC

Section: (none) **Explanation**

Explanation/Reference:

QUESTION 70

An administrator is troubleshooting basic network connectivity issues.

Which two scenarios are potential issues that this administrator might face? (Choose two.)

- A. The vSwitch is not attached to the correct physical network.
- B. The portgroup is not configured to use correct VLAN.
- C. Traffic shaping is configured incorrectly.
- D. Jumbo frames is configured incorrectly.

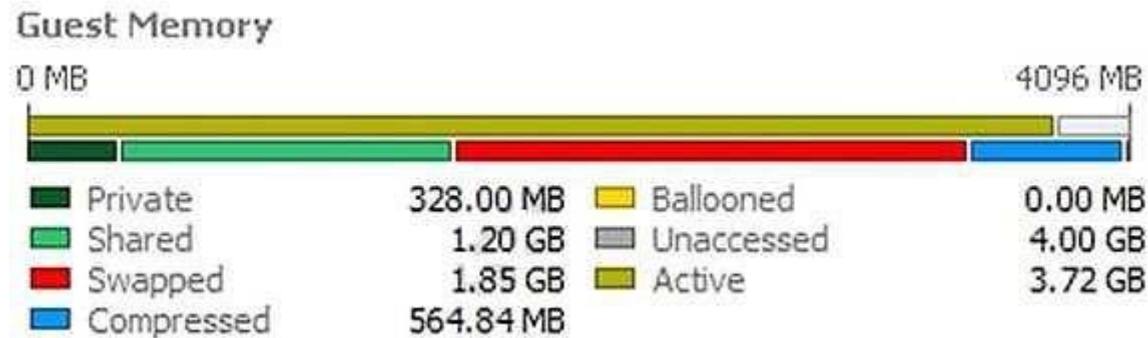


Correct Answer: AB **Section:** (none) **Explanation**

Explanation/Reference:

QUESTION 71

Refer to the Exhibit. A 4 GB Memory virtual machine is experiencing extended memory issues, as shown in the Exhibit.



What potential issues could be attributed to this memory pressure?

- A. A limit is imposed on the virtual memory of this virtual machine.
- B. The Balloon driver has been uninstalled.
- C. A limit has been imposed on the Virtual CPU of the virtual machine.
- D. Storage IO control has been enabled for the virtual machine causing the swapped memory.

Correct Answer: AB

Section: (none) **Explanation**

Explanation/Reference:

Explanation:

One of the issue might be that the limit is imposed on the virtual memory of this VM. Secondly, the balloon driver has been uninstalled. That's why it is experiencing memory issues.

QUESTION 72

What is the optimal configuration when building a virtual machine for a single-threaded Windows application?

- A. Deploy single-threaded applications on uniprocessor virtual machines.
- B. Deploy single-threaded applications on symmetric multi-processor virtual machines.
- C. Tune single-threaded applications to take advantage of symmetric multi-processor resources.
- D. Tune Single-threaded applications at the hypervisor level.

Correct Answer: A

Section: (none)

Explanation

Explanation/Reference:

QUESTION 73

An administrator has just completed performing an interactive installation of ESXi 6.x and is booting the host. How is the network initially configured?

- A. The network is configured by Automatic Private IP Addressing (APIPA).
- B. The network is configured based on the settings detected in DNS.
- C. The network is configured with the address as specified in the installer.
- D. The network is automatically configured by DHCP.

Correct Answer: D

Section: (none) Explanation

Explanation/Reference:

QUESTION 74

What must be enabled to ensure that VM Component Protection (VMCP) works in a High Availability cluster?



<https://vceplus.com/>

- A. VMware Tools Virtual Machine Communication Interface (VMCI)
- B. Fault Tolerance
- C. Atomic Test and Set (ATS)
- D. All Paths Down (APD) Timeout

Correct Answer: D

Section: (none)

Explanation

Explanation/Reference:

Reference: <https://docs.vmware.com/en/VMware-vSphere/6.0/com.vmware.vsphere.avail.doc/GUID-F01F7EB8-FF9D-45E2-A093-5F56A788D027.html>

QUESTION 75

A virtual machine is experiencing performance issues.

The following performance metrics are observed:

- CPU usage value for the virtual machine is above 90%

- CPU ready value for the virtual machine is above 20%

Which two activities will likely resolve the performance issues? (Choose two.)

- A. Set a CPU reservation for the virtual machine.
- B. Increase the CPU limit on the virtual machine.
- C. Decrease CPU shares equally for all virtual machines on the host.
- D. Increase CPU shares equally for all virtual machines on the host.

Correct Answer: AB

Section: (none) **Explanation**

Explanation/Reference:



QUESTION 76

A vApp named Sales has a Memory Limit of 32 GB and a CPU Limit of 12,000 MHz.

There are three virtual machines within the vApp:

Sales-DB -- Has a memory reservation of 20 GB. Sales-DC -- Has a memory reservation of 8 GB. Sales-Web -- Has a memory reservation of 8 GB.

Which statement is correct?

- A. All three virtual machines can power on, but will have memory contention.
- B. All three virtual machines can power on without memory contention.
- C. Only two of the three virtual machines can power on.
- D. Only one of the virtual machines can power on.

Correct Answer: C

Section: (none) **Explanation**

Explanation/Reference:

QUESTION 77

Which two configurable options apply to both virtual machine CPU and memory allocation? (Choose two.)

- A. Reservation
- B. Shares
- C. Resource Pool
- D. Reserve All

Correct Answer: AB

Section: (none) **Explanation**

Explanation/Reference:

QUESTION 78

What information is required as part of an interactive ESXi 6.x installation?

- A. Keyboard layout
- B. IP Address
- C. Root password
- D. DNS information

Correct Answer: AC

Section: (none) **Explanation**

Explanation/Reference:

Reference: <https://docs.vmware.com/en/VMware-vSphere/6.5/com.vmware.vsphere.install.doc/GUID-4CBEADFB-FBBD-49B6-A39C-FC810ECC1E49.html>

QUESTION 79

Which two statements are true about VMFS5 datastores on ESXi 6.x? (Choose two.)

- A. Virtual Disk (VMDK) size can be larger than 2TB.
- B. Datastore extent size can be larger than 2TB.
- C. Only Physical Mode Raw Device Map (Passthrough-RDM) can be larger than 2TB.
- D. 2MB block size is required to support larger than 2TB file size.

Correct Answer: AB

Section: (none) **Explanation**

Explanation/Reference:

QUESTION 80

Which two SMTP Notification Event Details are specific to alarms triggered by events? (Choose two.)

- A. User Name
- B. Summary
- C. Old Status
- D. Target

Correct Answer: AB

Section: (none) **Explanation**

Explanation/Reference:

QUESTION 81

An administrator has unsuccessfully attempted several times to install an Operating System inside a virtual machine. The administrator finds that the installation fails at random intervals.

Which two actions can be taken to resolve this issue? (Choose two.)

- A. Verify the md5sum and if invalid, download the installation files again.
- B. Attempt the installation an additional time.
- C. Attempt to use a different installation media or installation method.
- D. Create a new virtual machine and attempt the installation with the existing media.

Correct Answer: AC

Section: (none) **Explanation**

Explanation/Reference:

QUESTION 82

Refer to the Exhibit. A storage administrator has reported that full utilization of all bandwidth from an ESXi 6.x host is not being seen. In troubleshooting the issue, the Adapter details are shown in the Exhibit.

Adapter Details

Properties Devices Paths			
<input type="button" value="Enable"/> <input type="button" value="Disable"/>			
Runtime Name	Target	LUN	Status
vmhba2:C0:T3:L0	50:06:01:60:c7:20:6a:a4 50:06:0...	0	Active (I/O)
vmhba2:C0:T2:L0	50:06:01:60:c7:20:6a:a4 50:06:0...	0	Active (I/O)
vmhba2:C0:T1:L0	50:06:01:60:c7:20:6a:a4 50:06:0...	0	Disabled
vmhba2:C0:T0:L0	50:06:01:60:c7:20:6a:a4 50:06:0...	0	Active

Based on the exhibit, what is cause of the issue?

- A. The array is not setup to use the correct multipathing policy.
- B. There are no virtual machines on the ESXi host.
- C. Not all links are used because a path is disabled.
- D. Another path needs to be configured.

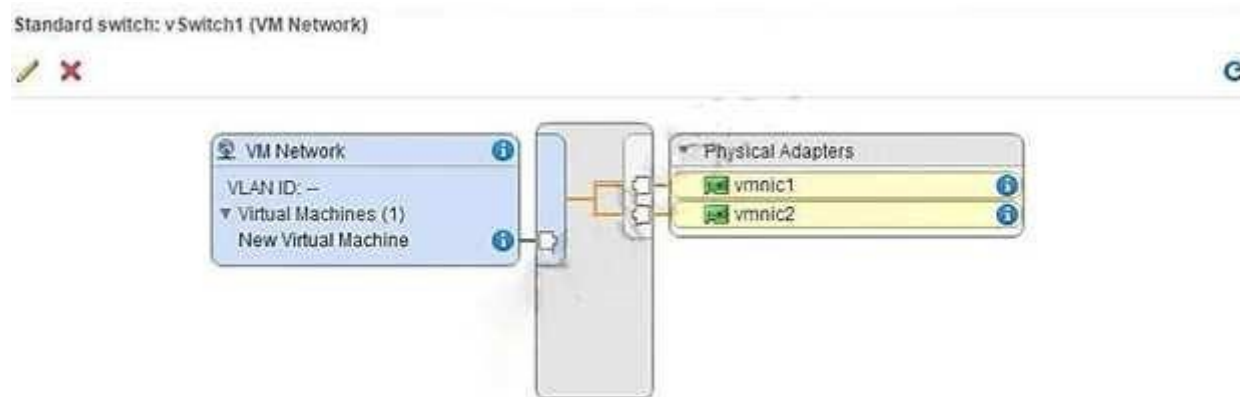
Correct Answer: C

Section: (none) Explanation

Explanation/Reference:

QUESTION 83

Refer to the Exhibit. An administrator has configured network connectivity for a new virtual machine, as shown in the Exhibit.



What will occur with the network traffic of this virtual machine when communicating externally from vSwitch1?

- A. The virtual machine will communicate on both uplinks
- B. The virtual machine will only communicate on vmnic1
- C. The virtual machine will only communicate on vmnic2
- D. The virtual machine will fail to communicate externally

Correct Answer: D

Section: (none) Explanation

Explanation/Reference:

QUESTION 84

Refer to the Exhibit. An administrator is adding an NFS datastore as shown in the Exhibit.

New Datastore

1 Location

2 Type

3 Select NFS version

4 Name and configuration

5 Configure Kerberos authentication

6 Ready to complete

Datastore name: Datastore 1

NFS Share Details

Enter the NFS share details. If the server that will back this datastore has trunking enabled, below you can enter additional IPs, which the ESX will use to achieve multipathing to this NFS server mount point.

Folder: /bnt1

E.g: /datastore-001

Server(s):

E.g: nas, nas.it.com or 192.168.0.1

×

Filter

Servers to be added

10.21.16.253

10.21.16.252

2 items

If you intend to configure an existing datastore on new hosts in the datacenter, it is recommended to use the "Mount to additional hosts" action instead.

Access Mode

Mount NFS as read-only

Back

Next

Finish

Cancel

What is the purpose of the Servers to be added list?

- A. It contains the IP addresses of the NFS Storage Server to provide multipathing capability.
- B. It contains the IP addresses of the ESXi hosts that mount the datastore.

www.vceplus.com - VCE Exam Simulator - Download A+ VCE (latest) free Open VCE Exams - VCE to PDF Converter - PDF Online

- C. It contains the IP addresses used for Dynamic Discovery of targets.
- D. It contains the IP addresses used for Static Discovery of targets.

Correct Answer: A

Section: (none) **Explanation**

Explanation/Reference:

QUESTION 85

Which two actions are prerequisites to adding ESXi 6.x hosts to a vSphere Distributed Switch? (Choose two.)

- A. Verify that there is at least one Distributed Port Group on the Distributed Switch.
- B. Verify that the Distributed Port Group have active uplinks configured in its teaming and failover policy.
- C. Verify that the Distributed Switch has been configured with a Network Profile.
- D. Verify that Network I/O control for Management Traffic is configured for the highest share value.

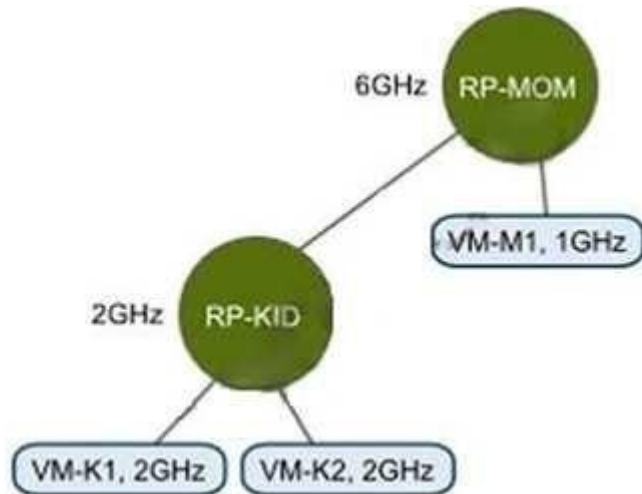
Correct Answer: AB **Section:** (none) **Explanation**

Explanation/Reference:



QUESTION 86

Refer to the Exhibit. An administrator has created the resource pool configuration shown in the Exhibit.



Based on the exhibit, which virtual machine(s) can be successfully powered on?

- A. VM-M1 only
- B. VM-K1 only
- C. VM-K1 and VM-K2 only
- D. VM-K1, VM-K2, and VM-M1

Correct Answer: D Section: (none) Explanation

Explanation/Reference:

QUESTION 87

You are creating a virtual machine in the Web Client using the New Virtual Machine wizard.

Which two steps are required? (Choose two.)

- A. Select a valid name.
- B. Select a cluster for the compute resource.
- C. Select a network adapter.
- D. Select the virtual machine compatibility.

Correct Answer: AD **Section:** (none)

Explanation

Explanation/Reference:

QUESTION 88

An administrator is migrating a virtual machine from a Test cluster to a Production cluster.

The two environments do not have any shared storage.

What is the easiest way to accomplish this task?

- A. Perform a Storage vMotion.
- B. Perform a regular vMotion.
- C. Perform a Virtual to Virtual migration.
- D. Perform a backup and restore using VMware Data Protection.

Correct Answer: B

Section: (none) **Explanation**

Explanation/Reference:



QUESTION 89

A vSphere administrator has been using vSphere in evaluation mode and now wants to deploy an environment that provides the same features.

Which edition of vSphere provides similar functionality to evaluation mode?

- A. Enterprise Plus
- B. EnterpriseC. Standard
- D. Essentials

Correct Answer: A

Section: (none) **Explanation**

Explanation/Reference:

QUESTION 90

An administrator creates an ESXi cluster using vSphere Auto Deploy. The ESXi hosts are configured to get a management IP address from a DHCP server. The administrator needs to troubleshoot the management network on one of the hosts. Which DCUI option should the administrator use to renew the DHCP lease?

- A. Restart Management Network
- B. Restore Network Settings
- C. Test Management Network
- D. Configure Management Network

Correct Answer: A

Section: (none)

Explanation

Explanation/Reference:

QUESTION 91

After selecting an object in vRealize Operations, how can a user compare the badge values of related child objects?

- A. Use the Scoreboard tab
- B. Use the Relationship tab
- C. Use the Members tab
- D. Use the Overview tab



Correct Answer: A

Section: (none) **Explanation**

Explanation/Reference:

QUESTION 92

An administrator enables vSphere High Availability (HA) on an existing cluster with a large number of hosts and virtual machines. The administrator notices that the setup of vSphere HA on some of the hosts is failing.

What step, if taken, might resolve this issue?

- A. Increase the value of the config.vpxd.das.electionWaitTimeSec setting.
- B. Set the value of vpxd.das.aamMemoryLimit to 256.
- C. Set the value of the das.useDefaultIsolationAddress setting to False.

D. Increase the value of the das.iostatsinterval setting.

Correct Answer: A

Section: (none)

Explanation

Explanation/Reference:

QUESTION 93

A company has decided to implement Virtual SAN within their vSphere 6.x environment.

The Virtual SAN cluster will be composed of three ESXi 6.x hosts that are on the Virtual SAN Ready Node list.

Each ESXi host includes:

- Two SAS Controllers that support Passthrough Mode
- Four Solid State Drives (SSDs) 1TB in size each
- 20 SAS Magnetic Disks (MDs) 1TB in size each
- The SSDs and MDs are evenly split between the two SAS controllers

The company will pilot a Virtual SAN cluster utilizing VMware best practices while maximizing storage capacity. The Virtual SAN cluster will use Manual Mode.

Which two Disk Group configurations would meet the stated configuration requirements? (Choose two.)

- A. 4 disk groups with 1 SSD and 5 MDs each
- B. 2 disk groups with 1 SSD and 7 MDs each
- C. 2 disk groups with 2 SSDs and 7 MDs each
- D. 2 disk groups with 1 SSD and 10 MDs each

Correct Answer: AB

Section: (none)

Explanation

Explanation/Reference:

QUESTION 94

What is a requirement when enabling a Virtual SAN cluster in an existing High Availability (HA) and Distributed Resource Scheduler (DRS) Cluster?

- A. Disable DRS and HA before enabling Virtual SAN

- B. Enable DRS before enabling Virtual SAN
- C. Disable HA before enabling Virtual SAN
- D. Enable Storage DRS before enabling Virtual SAN

Correct Answer: C

Section: (none) **Explanation**

Explanation/Reference:

QUESTION 95

Immediately after installing ESXi, an administrator observes that the Configure Lockdown Mode option is grayed out in the Direct Console User Interface (DCUI).

What is the most likely explanation?

- A. The host has not yet been added to a vCenter Server.
- B. The BIOS on the host does not have NX/XD enabled.
- C. The ESXi host is running in evaluation mode.
- D. The host requires a reboot before this feature is available.



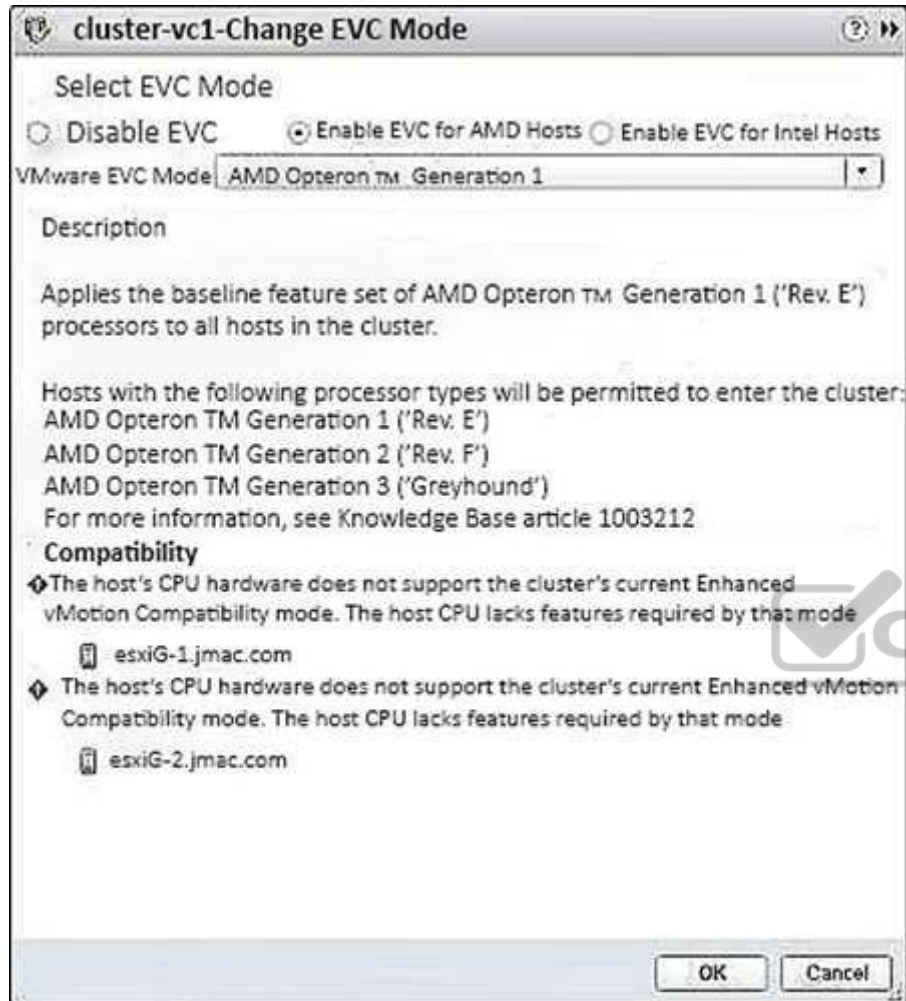
Correct Answer: A

Section: (none) **Explanation**

Explanation/Reference:

QUESTION 96

Refer to the Exhibit. An administrator attempts to enable Enhanced vMotion Compatibility (EVC) on a cluster. The operation results in a compatibility error, as shown in the exhibit.



What is the likely cause of this error?

- A. The CPUs in the ESXi host are not AMD CPUs.
- B. The CPUs in the ESXi host do not support hardware virtualization capabilities.
- C. The XD/NX CPU features have not been enabled in the BIOS of the server.
- D. There is no shared storage between the hosts in the cluster.

Correct Answer: A

Section: (none) **Explanation**

Explanation/Reference:

QUESTION 97

After installation of a host in your test environment, you need to move it to production.

The only major change that needs to be made is that the hostname of the server needs to change.

What are two ways that an administrator can change the host name without editing configuration files on the host directly? (Choose two.)

- A. Login to the Direct Console User Interface and change it from here.
- B. Edit the Default TCP/IP Configuration from the vSphere Web Client.
- C. Use the Ruby vSphere Client to send a script to the ESXi host that updates the hostname.
- D. Update the information in DNS and the ESXi host will automatically update with these changes.

Correct Answer: AB **Section:** (none) **Explanation**

Explanation/Reference:



QUESTION 98

What is a benefit of using VMware Data Protection (VDP)?



<https://vceplus.com/>

- A. Provides support for guest-level backups and restores of Microsoft SQL Servers, Exchange Servers, and Share Point Servers.
- B. Provides support for advanced storage services including replication, encryption, deduplication, and compression.
- C. Provides direct access to VDP configuration integrated into the vSphere Client.
- D. Reduces disk space consumed by virtual machine data using deduplication.

Correct Answer: D

Section: (none) Explanation

Explanation/Reference:

QUESTION 99

In order for a company to meet regulatory requirements, all ESXi 6.x Hosts must be configured to direct logs to a syslog server. What are two ways ESXi hosts can configured for this action? (Choose two)

- A. Use the esxcli system syslog command.
- B. Edit them in the ESXi host Advanced System Settings.
- C. From the Syslog collector user interface of the Web Client.
- D. Syslog logging is not available for ESXi Hosts.

Correct Answer: AB

Section: (none)

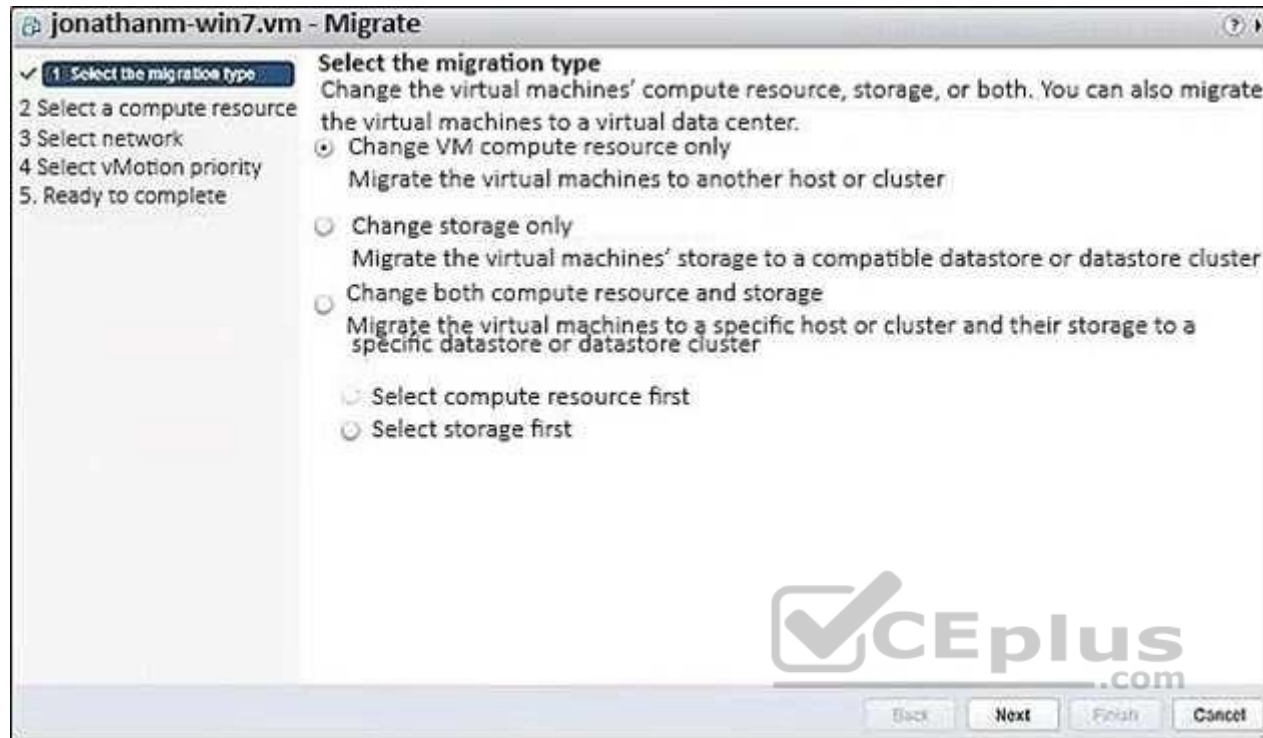
Explanation

Explanation/Reference:



QUESTION 100

Refer to the Exhibit. An administrator is migrating a powered-on virtual machine, as shown in the exhibit.



Which option should be selected to perform a Storage vMotion of the VM?

- A. Change storage only
- B. Change VM compute resource only
- C. Change both compute resource and storage, changing the compute resource first.
- D. Change both compute resource and storage, changing the storage resource first.

Correct Answer: A

Section: (none)

Explanation

Explanation/Reference:

QUESTION 101

An administrator has recently installed a new ESXi 6.x Host, and during the configuration notices sporadic network problems. To check whether the issue occurred sometime during the configuration, the administrator would like to reset the system.

How can this be accomplished in the shortest amount of time?

- A. Run the ESXi installer again and reinstall the host.
- B. Select the Reset System Configuration option from the vSphere Client when connected directly to the host.
- C. From the Direct Console User Interface, select Reset System Configuration.
- D. Use a host profile to reset the configuration to a default state.

Correct Answer: C

Section: (none) **Explanation**

Explanation/Reference:

QUESTION 102

vSphere Update Manager allows which two virtual machine attributes to be upgraded? (Choose two.)

- A. Virtual machine firewall policies for NSX.
- B. Software Packages in the virtual machine.
- C. Virtual machine Hardware Version.
- D. VMware Tools Upgrade.

Correct Answer: CD

Section: (none) **Explanation**

Explanation/Reference:

QUESTION 103

What are two benefits of using NFS 4.1 with vSphere 6.x as compared to NFS 3? (Choose two.)

- A. NFS 4.1 supports Kerberos Authentication
- B. NFS 4.1 supports multipathing
- C. NFS 4.1 supports IPv6
- D. NFS 4.1 supports hardware acceleration

Correct Answer: AB

Section: (none) Explanation

Explanation/Reference:

QUESTION 104

An administrator is monitoring a High Availability (HA) and Distributed Resource Scheduler (DRS) enabled cluster and has noticed that virtual machines in the cluster are being migrated without user intervention.

Why is this happening?

- A. The DRS Automation level is set to Fully Automated.
- B. The Automation level is set to Automatic.
- C. The DPM Threshold is set to Aggressive.
- D. The Power Management feature is configured.

Correct Answer: A

Section: (none) Explanation

Explanation/Reference:



QUESTION 105

What is a benefit of using Enhanced vMotion Compatibility for an environment?

- A. EVC masks CPU features to allow compatibility between hosts that are dissimilar.
- B. EVC allows for cross platform vMotion to occur.
- C. EVC enables Long Distance vMotion.
- D. EVC enables Storage vMotion functionality.

Correct Answer: A

Section: (none) Explanation

Explanation/Reference:

QUESTION 106

What are three valid disk configurations for the vSphere Data Protection 6.x Appliance? (Choose three.)

- A. 500GB
- B. 1TB

- C. 1.5TB
- D. 2TB
- E. 4TB

Correct Answer: ABD

Section: (none) **Explanation**

Explanation/Reference:

QUESTION 107

Your manager has given you a bash script that retrieves data for ESXi 6.x host configurations. This data needs to be collected right after the installation of a host and must be run directly on the host. Which two actions can be used to run this script on an ESXi host? (Choose two.)

- A. Connect to the host with Ruby vSphere Console and run the script from there.
- B. Enable SSH access from the Direct Console User Interface.
- C. Enable the ESXi Shell from the Direct Console User Interface.
- D. Run the script directly from the vSphere Web Client.

Correct Answer: BC

Section: (none) **Explanation**

Explanation/Reference:

QUESTION 108

How are ports scaled on vSphere Standard Switches (vSS)? A. Ports on a vSS can be dynamically scaled up and down.

- B. Ports on a vSS can only be statically scaled up or down.
- C. Ports on a vSS can only be dynamically scaled down.
- D. Ports on a vSS can only be dynamically scaled up.

Correct Answer: A

Section: (none)

Explanation

Explanation/Reference:

QUESTION 109

An administrator has configured an alarm to be notified when a virtual machine meets two conditions:

high virtual CPU high active
memory consumption

The alarm is malfunctioning and triggering when either condition is met instead of both.
What can be done to correct the issue?

- A. Edit the alarm and select Trigger if ALL of the following conditions are satisfied.
- B. Edit the alarm and select Trigger if ANY of the following conditions are satisfied.
- C. Create two separate alarms, one for CPU and one for memory.
- D. Delete the existing alarm and create a new event based alarm.

Correct Answer: A

Section: (none)

Explanation

Explanation/Reference:

**QUESTION 110**

Refer to the Exhibit. A storage administrator is not seeing full utilization of all bandwidth from an ESXi host. The vSphere administrator observes the adapter details, as shown in the Exhibit.

Adapter Details

Properties Devices Paths			
<input type="button" value="Enable"/> <input type="button" value="Disable"/>			
Runtime Name	Target	LUN	Status
vmhba2:C0:T3:L0	50:06:01:60:c7:20:6a:a4 50:06:0...	0	◆ Active (I/O)
vmhba2:C0:T2:L0	50:06:01:60:c7:20:6a:a4 50:06:0...	0	◆ Active (I/O)
vmhba2:C0:T1:L0	50:06:01:60:c7:20:6a:a4 50:06:0...	0	◇ Disabled
vmhba2:C0:T0:L0	50:06:01:60:c7:20:6a:a4 50:06:0...	0	◆ Active

What is the probable cause of this issue?

- A. Another path needs to be used to allow full utilization of the bandwidth.
- B. The array is not setup to use the correct multipathing policy.
- C. There are no virtual machines on the host.
- D. No traffic is being sent across it because a path failed.

Correct Answer: D Section: (none) Explanation

Explanation/Reference:

QUESTION 111

When is it possible to place a VMFS5 datastore in maintenance mode?

- A. When it is a member of a Storage DRS cluster
- B. When it is a member of Virtual SAN cluster
- C. When it is a member of a multi-extent datastore
- D. When it is a member of a Virtual Volume

Correct Answer: A

Section: (none) Explanation

Explanation/Reference:

QUESTION 112

Which vSphere 6 Enterprise Edition feature will allow an organization to ensure that critical multi-threaded applications have the maximum possible uptime?

- A. Fault Tolerance
- B. High Availability
- C. Distributed Resource Scheduler
- D. App HA

Correct Answer: A

Section: (none)

Explanation

Explanation/Reference:

QUESTION 113

Why are some virtual machines orphaned after rebooting a High Availability (HA) enabled host?

- A. The Orphaned virtual machines have HA restart disabled.
- B. The Orphaned virtual machines moved recently and the change did not persist.
- C. The host is attached to failed storage.
- D. The host just came out of maintenance mode.

Correct Answer: A

Section: (none) Explanation

Explanation/Reference:

QUESTION 114

An administrator creates a DRS cluster of eight ESXi 6.x hosts. There are 10 virtual machines balanced across the hosts. An attempt to place the first host into maintenance mode fails.

What are two reasons that the host failed to enter maintenance mode? (Choose two.)

- A. The DRS cluster Automation Level is set to Partially Automated mode.

- B. One of the virtual machines on the ESXi Host entering maintenance mode is configured with a DRS Host affinity rule Should run on hosts in group.
- C. One of the virtual machines on the ESXi Host entering maintenance mode is configured with a DRS Host affinity rule Must run on hosts in group.
- D. One of the virtual machines on the ESXi Host entering maintenance mode is configured with an individual Automation Level set to Partially Automated.

Correct Answer: AD

Section: (none)

Explanation

Explanation/Reference:

QUESTION 115

An administrator is attempting to migrate a large Hadoop virtual machine using vMotion.

The administrator notices a delay when the machine is quiesced. The Hadoop virtual machine is processing many transactions a second to an in-memory database. Which two actions would help reduce the amount of time needed to perform a vMotion on this virtual machine? (Choose two.)

- A. Use multiple NICs for the vMotion vmkernel port.
- B. Use a 10Gbps Network card for the vMotion vmkernel port.
- C. Add an additional management network to help transmit the data quicker.
- D. Disable Fault Tolerance before performing the vMotion.

Correct Answer: AB

Section: (none)

Explanation

Explanation/Reference:

QUESTION 116

Which statement is true regarding the licensing of vCenter Server?

- A. The license for vCenter Server must be provided at the time of installation.
- B. Changing the license assigned to vCenter Server requires a restart of the vCenter Server service.
- C. Virtual machines can still be powered on if the vCenter Server license expires.
- D. Licensing for a single vCenter Server installation is determined by the number of managed virtual machines.

Correct Answer: C

Section: (none) **Explanation**

Explanation/Reference:

QUESTION 117

An administrator needs to verify that vMotion operations can be performed in a vSphere data center.

What round trip time (RTT) latency is the maximum value that will allow vMotion operations to succeed?

- A. 50ms RTT
- B. 100ms RTT
- C. 150ms RTT
- D. 200ms RTT

Correct Answer: B

Section: (none) Explanation

Explanation/Reference:

QUESTION 118

What is a valid plug-in status for a plug-in that has been added to a vSphere client?

- A. Disabled
- B. Unknown
- C. Stopped
- D. Installed

Correct Answer: A

Section: (none)

Explanation

Explanation/Reference:

QUESTION 119

A virtual machine has been renamed and an administrator is unable to find files with the new virtual machine name in the datastore.

What is the reason for this?

- A. The names of the files on the datastore do not change.
- B. The names of the files on the datastore have been corrupted.
- C. The virtual machine needs to be re-added to the inventory.
- D. The Distributed Resource Scheduler moved the virtual machine to another host.

Correct Answer: A

Section: (none) **Explanation**

Explanation/Reference:

QUESTION 120

A new vApp was built and tested in the corporate headquarters datacenter running vSphere 6.x.

What condition would explain why the virtual machine is failing to boot in an offsite datacenter running on vSphere 5.5?

- A. The virtual machine was built with the default hardware version.
- B. The VMFS 5 datastore is not compatible with virtual machines configured with vSphere 6.x.
- C. A DRS 5.5 cluster cannot run virtual machines configured with vSphere 6.x.
- D. The VMDK file is locked.

Correct Answer: A

Section: (none) **Explanation**

Explanation/Reference:

QUESTION 121

When configuring vSphere Replication for a virtual machine, what is the lowest Recovery Point Objective (RPO) that can be selected?

- A. 1 min
- B. 5 min
- C. 10 min
- D. 15min

Correct Answer: B

Section: (none) **Explanation**

Explanation/Reference:

QUESTION 122

Which two Fibre Channel zoning options are supported with vSphere 6.x? (Choose two.)



<https://vceplus.com/>

- A. Single-Initiator
- B. Single-Initiator-Single-Target
- C. Multiple-Initiators-Single-Target
- D. Multiple-Initiators-Multiple-Targets

Correct Answer: AB

Section: (none) **Explanation**

Explanation/Reference:

**QUESTION 123**

Which two are true about the Risk badge in vRealize Operations? (Choose two.)

- A. The Risk badge indicates potential future problems that may degrade the performance of the system.
- B. Risks may require attention in the near future.
- C. The Risk badge indicates problems that are degrading performance of the system.
- D. Risks require attention now to correct system performance problems.

Correct Answer: AB

Section: (none) **Explanation**

Explanation/Reference:

QUESTION 124

When attempting to power on a Virtual Machine you observe the following error:

Cannot open the disk '/vmfs/volumes/volume/vm/vm-000002.vmdk' or one of the snapshot disks it depends on.

Which three actions will be the best solutions to address this problem? (Choose three.)

- A. Verify that the virtual machine's disk files are present.
- B. Investigate the host and virtual machine log files.
- C. Verify the vmdk descriptor files and if required, recreate them.
- D. Delete the disk file preventing the power on operation.
- E. Migrate or register the virtual machine to a different host.

Correct Answer: ABC

Section: (none) **Explanation**

Explanation/Reference:

QUESTION 125

Which two allow for the disabling of Network Rollback operations? (Choose two.)

- A. Modifying the vpxd advanced configuration options and adding the config.vpxd.network.rollback key
- B. Modifying the C:\ProgramData\VMware\CIS\cfg\vmware-vpx\vpzd.cfg file and adjusting the <rollback> xml tag
- C. Modifying the C:\ProgramData\VMware\CIS\cfg\vmware-vpx\vpzd.cfg file and adjusting the <networkrollback> xml tag
- D. Modifying the C:\ProgramData\VMware\CIS\cfg\vmware-vpx\firstboot\vpzd-service-spec.prop file and adjusting the <rollback> xml tag

Correct Answer: AB
Section: (none) **Explanation**

Explanation/Reference:

QUESTION 126

A developer needs to create a multi-tier development stack for a home lab.

Which vSphere product will support the architecture required for the least software cost?

- A. vSphere Hypervisor
- B. vSphere Essentials
- C. VMware Player
- D. VMware Workstation

Correct Answer: A

Section: (none)

Explanation

Explanation/Reference:

QUESTION 127

You want to deploy a vApp and dynamically assign IP addresses without a DHCP server on the network.

Which action would you take to accomplish this task?

- A. Enable IP pools.
- B. Configure a local DHCP server in the vApp.
- C. Enable NAT on the vApp router.
- D. Configure the guest OS for workgroup and WINS.

Correct Answer: A

Section: (none) **Explanation**

Explanation/Reference:

Reference: <https://docs.vmware.com/en/VMware-vSphere/6.0/com.vmware.vsphere.hostclient.doc/GUID-5B3AF10D-8E4A-403C-B6D1-91D9171A3371.html>

QUESTION 128

Which two High Availability (HA) Cluster admission control policies can help avoid resource fragmentation? (Choose two.)

- A. Define failover capacity by static number of hosts
- B. Define failover capacity by reserving a percentage of the cluster resources
- C. Use dedicated failover hosts
- D. Use Virtual Machine Monitoring

Correct Answer: AC

Section: (none) **Explanation**

Explanation/Reference:

Reference:

<https://docs.vmware.com/en/VMware-vSphere/6.0/com.vmware.vsphere.avail.doc/GUID-85D9737E-769C-40B6-AB73-F58DA1A451F0.html>

<https://docs.vmware.com/en/VMware-vSphere/6.0/com.vmware.vsphere.avail.doc/GUID-53F6938C-96E5-4F67-9A6E-479F5A894571.html>

QUESTION 129

An administrator is creating a new vSphere Distributed Switch that will be utilized with a specific vSphere Cluster. The cluster itself contains a mix of ESXi 5.x and 6.x Hosts.

Which Distributed Switch version should be created to support this configuration?

- A. Distributed Switch: 6.0.0
- B. Distributed Switch: 5.0.0
- C. Distributed Switch: 5.1.0
- D. Distributed Switch: 5.5.0

Correct Answer: B

Section: (none) **Explanation**

Explanation/Reference:

QUESTION 130

An administrator is virtualizing a physical application server and adding it to an existing multi-tiered vApp. The application license is currently tied to the physical NIC's MAC address, so the administrator needs to ensure the license will function properly in the virtual machine.

Which two actions can the administrator take to satisfy this task? (Choose two.)

- A. Set the MAC address for the vNIC in the guest operating system.
- B. Install the physical server's NIC into the ESXi host.
- C. Configure the MAC address for the vNIC using the vSphere Web Client.
- D. Assign the physical server NIC's MAC address in the vSphere Distributed Switch.

Correct Answer: AC

Section: (none) **Explanation**

Explanation/Reference:

QUESTION 131

Which three actions can be taken as a result of executing the vSphere Update Manager 6.x scan and remediation wizards? (Choose three.)

- A. Install and upgrade software in virtual machines.
- B. Upgrade the firmware on ESXi host devices.

- C. Upgrade and Patch ESXi hosts.
- D. Install and update third-party software on hosts.
- E. Upgrade virtual machine hardware.

Correct Answer: CDE

Section: (none)

Explanation

Explanation/Reference:

QUESTION 132

Which two storage controller configurations can be used with Virtual SAN? (Choose two.)

- A. SAS controllers in Passthrough mode
- B. SAS controllers in RAID0 mode
- C. SAS controllers in RAID1 mode
- D. SAS controllers in RAID10 mode

Correct Answer: AB

Section: (none)

Explanation

Explanation/Reference:

QUESTION 133

An administrator has been tasked with enabling High Availability (HA) on a cluster in a vSphere 6.x environment with default settings. The cluster configures properly and there are no errors.

The next day when powering on a virtual machine, an error is presented:

Not Enough Failover Resources

Which three scenarios are likely causes of this error message? (Choose three.)

- A. The default VM Monitoring Sensitivity is set too high.
- B. There are not enough datastore heartbeat datastores configured by default.
- C. The default slot size in the cluster is set too high.
- D. There are virtual machines with large CPU reservations.



E. A host is in maintenance mode for a replacement of a failed Hard Drive.

Correct Answer: CDE

Section: (none)

Explanation

Explanation/Reference:

QUESTION 134

An administrator configures vSphere Replication for a virtual machine and enables multiple point in time (PIT) instances under the recovery settings in the Configure Replication wizard.

Which two statements are correct for vSphere Replication with multiple point in time instances enabled? (Choose two.)

- A. vSphere Replication retains a number of snapshot instances of the virtual machine on the target site based on the retention policy that you specify.
- B. vSphere Replication uses the virtual machine's snapshot instances to define the target site Point in Time instance based on the retention policy that you specify.
- C. vSphere Replication does not support virtual machines with snapshots.
- D. vSphere Replication supports virtual machines with snapshots.

Correct Answer: AC

Section: (none)

Explanation

Explanation/Reference:

QUESTION 135

Which two networking connection types can be configured on a virtual switch? (Choose two.)

- A. Virtual machine portgroups
- B. VMkernel services (such as NFS, iSCSI, or vMotion) to the physical network
- C. Web services over the Management Network
- D. NFS and FCoE storage services

Correct Answer: AB

Section: (none)

Explanation

Explanation/Reference:

QUESTION 136

Which three statements are true regarding Fault Tolerance? (Choose three.)

- A. Applications need to be continuously available to users.
- B. Applications without native clustering capabilities can be protected.
- C. Custom clustering solutions are complicated to configure and maintain.
- D. Applications that have 16 vCPUs are supported.
- E. Prevents application crashes by analyzing the workload and correcting problems.

Correct Answer: ABC

Section: (none) **Explanation**

Explanation/Reference:

QUESTION 137

An administrator is installing a new network card in an ESXi 6.x host that is part of a vSphere cluster. When the host is placed into maintenance mode, the vSphere Web Client displays the progress bar at 2% for over 30 minutes.

Which two are likely reasons for this occurrence? (Choose two.)

- A. Maintenance mode is unable to migrate all virtual machines from the host.
- B. There is a large number of virtual machines that must be migrated from the host.
- C. VMware High Availability is in the process of reconfiguring the cluster.
- D. Each virtual machine on the ESXi host must be reconfigured to recognize the new adapter.

Correct Answer: AB

Section: (none) **Explanation**

Explanation/Reference:

QUESTION 138

An administrator is attempting to power on a virtual machine, but the task is hanging at 95%.

What three scenarios best explain why this problem is happening? (Choose three.)

- A. A virtual machine question is currently being posed to the administrator.

- B. Another task for the virtual machine or other component is already in progress.
- C. The VMware High Availability cluster has insufficient resources to guarantee failover.
- D. The host has lost access to the storage device containing the virtual machine files.
- E. The host is under resource contention and unable to power on the virtual machine.

Correct Answer: ABC

Section: (none)

Explanation

Explanation/Reference:

QUESTION 139

An administrator is attempting to power on a virtual machine, but is unable to do so.

Which two reasons are probable causes of the failure? (Choose two.)

- A. Storage access to the virtual machine swap file has been lost.
- B. One of the virtual machine VMDK files is locked.
- C. Virtual machine is running CentOS 7.0 64-bit.
- D. Virtual machine has Hyper-Threading enabled.



Correct Answer: AB

Section: (none) **Explanation**

Explanation/Reference:

QUESTION 140

Which three conditions would prevent Storage I/O Control from being enabled on a group of datastores? (Choose three.)

- A. The datastores planned for the solution are used by different vSphere clusters.
- B. A datastore planned for the solution is configured as a Raw Device Mapping file.
- C. A datastore planned for the solution has three extents.
- D. A datastore planned for the solution is configured as NFS.
- E. The organization has an Enterprise license.

Correct Answer: BCE

Section: (none)

Explanation

Explanation/Reference:

QUESTION 141

An administrator is cloning and configuring five new web server virtual machines.

What would be the benefit of configuring resource shares for the new Vms?

- A. To prioritize access to a resource during contention.
- B. To guarantee access to a resource during contention.
- C. To prioritize access to a resource before contention occurs.
- D. To guarantee access to a resource before contention occurs.

Correct Answer: A

Section: (none)

Explanation

Explanation/Reference:



QUESTION 142

What is the default load balancing policy for a newly created VMkernel port on a vSphere Distributed Switch?

- A. Route based on originating virtual port ID
- B. Route based on IP Hash
- C. Route based on source mac address
- D. Route based on physical NIC load

Correct Answer: A

Section: (none)

Explanation

Explanation/Reference:

QUESTION 143

By default, each ESXi 6.x host is provisioned with a certificate from which root certificate authority?

- A. RedHat Certificate Authority
- B. VMware Certificate Authority
- C. DigiCert Certificate Authority
- D. Verisign Certificate Authority

Correct Answer: B

Section: (none) **Explanation**

Explanation/Reference:

QUESTION 144

During the installation of ESXi 6.0, the following error message is reported:

Hardware Virtualization is not a feature of the CPU, or is not enabled in the BIOS.

Which condition would generate this message?

- A. LAHF/SAHF is not enabled in the BIOS.
- B. NX/XD is not enabled in the BIOS.
- C. SSE3 is not enabled in the BIOS.
- D. Hyperthreading is not enabled in the BIOS.



Correct Answer: B

Section: (none) **Explanation**

Explanation/Reference:

QUESTION 145

An administrator has a virtual machine that requires four times the compute resources than other virtual machines on the same ESXi 6.x host.

How should the administrator configure the virtual machine settings, in order to be prepared for any resource contention?

- A. Set the shares of the priority virtual machine to High and the rest to Low.
- B. Set the shares of the priority virtual machine to High.
- C. Set the shares of the priority virtual machine to High and the rest to Normal.
- D. Set the shares of the priority virtual machine to Normal and the rest to Low.

Correct Answer: A

Section: (none) **Explanation**

Explanation/Reference:

QUESTION 146

An administrator is using the Host Failures to Tolerate Admission Control Policy for a vSphere High Availability (HA) cluster. When configuring this setting on the cluster, the administrator sees this error message:

Insufficient resources to satisfy HA failover level on cluster



<https://vceplus.com/>

What are two likely causes for the error? (Choose two.)

- A. The hosts in the cluster are disconnected.
- B. A host in the cluster is displaying an HA error.
- C. Distributed Resource Scheduler has not been configured on the cluster.
- D. Virtual Machine Component Protection has not been turned on.



Correct Answer: AB

Section: (none)

Explanation

Explanation/Reference:

QUESTION 147

An administrator is only able to see the Health Badge when using the vRealize Operations user interface. What is the likely cause of this behavior?

- A. The vRealize Operations Foundation License is in use.
- B. The vmware-sps service failed to start.
- C. The vRealize Operations Standard License is in use.

D. The vmware-rbd-watchdog service failed to start.

Correct Answer: A

Section: (none) **Explanation**

Explanation/Reference:

QUESTION 148

Which two components can be used when configuring Enhanced Linked Mode? (Choose two.)

- A. vCenter Server Appliance
- B. vRealize Operations Manager
- C. vSphere Management Appliance
- D. vCenter Server for Windows

Correct Answer: AD

Section: (none) **Explanation**

Explanation/Reference:



QUESTION 149

A company has recently incurred financial loss, due to a crashed server that resulted in the loss of critical data.

Which two vSphere 6.x features should this company implement to protect against losing critical data due to physical server failure? (Choose two.)

- A. Virtual Volumes
- B. Enhanced vMotion Capability
- C. High Availability
- D. Fault Tolerance

Correct Answer: CD

Section: (none)

Explanation

Explanation/Reference:

QUESTION 150

Which three vSphere 6.x features require a shared storage infrastructure to work properly? (Choose three.)

- A. Storage Policy Based Management
- B. vSphere Distributed Switch
- C. Fault Tolerance
- D. Distributed Power Management
- E. Dynamic Resource Scheduler

Correct Answer: CDE

Section: (none) **Explanation**

Explanation/Reference:

QUESTION 151

An administrator attempts to install vCenter Single Sign-On Server. The installer returns an error message indicating that the installation failed. Prior to the installation, all setup prerequisites were met. The administrator has generated a vCenter Server Single Sign-On support bundle.

Which two files should the administrator analyze to determine the cause of the failure? (Choose two.)

- A. Server\utils\logs\lmsTrace.log
- B. Server\utils\logs\install.txt
- C. %TEMP%\utils\logs\vminst.log
- D. %TEMP%\vminst.log

Correct Answer: AD

Section: (none) **Explanation**

Explanation/Reference:

Explanation:

http://kb.vmware.com/selfservice/microsites/search.do?language=en_US&cmd=displayKC&externalId=2033880
https://www.vmware.com/support/ws5/doc/intro_techsup_ws.html

QUESTION 152

Which three steps must be taken to use vSphere Update Manager 6.x to upgrade an ESXi 5.5 host to vSphere 6.x? (Choose three.)

- A. Download an ESXi Image.
- B. Configure the vSphere Update Manager Download Service.
- C. Create a baseline and attach it to the ESXi Host.

- D. Scan the vCenter Content Library for the ESXi Image.
- E. Remediate the ESXi Host.

Correct Answer: ACE

Section: (none)

Explanation

Explanation/Reference:

QUESTION 153

Which vSphere 6 Standard Edition feature will allow an organization to ensure that critical multi-threaded applications have the maximum possible uptime?

- A. Fault Tolerance
- B. High Availability
- C. Distributed Resource Scheduler
- D. App HA

Correct Answer: A

Section: (none) **Explanation**

Explanation/Reference:



QUESTION 154

An administrator must determine an appropriate backup solution, given these conditions:

- 50 of the virtual machines are in a resource pool named Finance.
- 50 of the virtual machines are in a resource pool named QA.

Which solution allows an administrator the ability to backup 100 virtual machines?

- A. Use Snapshot Manager on the vCenter Server to backup the virtual machines.
- B. Use the VMware Consolidated Backup (vcb) tool on the ESXi Host to backup the virtual machines.
- C. Use the VMware Data Recovery (VDR) Appliance on the vCenter Server to backup the virtual machines.
- D. Use the VMware Data Protection (VDP) Appliance on one of the ESXi Hosts to backup the virtual machines.

Correct Answer: D **Section:** (none)

Explanation

Explanation/Reference:**QUESTION 155**

During a new vSphere Distributed Switch configuration, where does the Maximum Transmission Unit (MTU) value get modified?

- A. Uplink Settings
- B. Switch Settings
- C. Portgroup Settings
- D. NIC Teaming Settings

Correct Answer: B

Section: (none) Explanation

Explanation/Reference:

Reference: <https://kb.vmware.com/s/article/1010557>

QUESTION 156

An administrator needs to monitor traffic on vSwitches in a vSphere 6.x environment.

Which option, if configured, would accomplish this task?

- A. Forged Transmits
- B. MAC Address Changes
- C. Promiscuous Mode
- D. Notify Switches



Correct Answer: C Section: (none) Explanation

Explanation/Reference:

Reference: <https://kb.vmware.com/s/article/1002934>

QUESTION 157

When attempting to access a virtual machine, an administrator is unable to login using the vSphere credentials.

What two options are probable causes of the authentication failure? (Choose two.)

- A. The vSphere credentials have not been granted permissions.
- B. The vSphere credentials are granted read-only permissions.
- C. The vSphere credentials are granted no-access permissions.

D. The vSphere credentials are not a member of the local administrator group.

Correct Answer: AB

Section: (none) **Explanation**

Explanation/Reference:

QUESTION 158

An administrator is planning a vSphere infrastructure with the following specific networking requirements:

- The ability to shape inbound (RX) traffic
- Support for Private VLANs (PVLANS)
- Support for LLDP (Link Layer Discovery Protocol)

What is the minimum vSphere Edition that will support these requirements?

- A. vSphere Essentials Plus
- B. vSphere Standard
- C. vSphere Enterprise
- D. vSphere Enterprise Plus



Correct Answer: D

Section: (none)

Explanation

Explanation/Reference:

Explanation:

<http://www.vmware.com/products/vsphere/compare> <http://www.vmware.com/products/vsphere/features/distributed-switch.html>

QUESTION 159

When modifying a vApp, which two vSphere entities can be added? (Choose two.)

- A. A resource pool
- B. A network pool
- C. A vApp
- D. A folder

Correct Answer: AB

Section: (none)

Explanation

Explanation/Reference:

Reference: https://docs.vmware.com/en/VMware-vSphere/6.5/com.vmware.vsphere.vm_admin.doc/GUID-E05E8AF9-C8F2-4482-B3F0-733C85C6DD97.html

QUESTION 160

An administrator attempts to migrate a suspended virtual machine to a newly deployed vSphere 6.x cluster. The compatibility check fails.

What condition could cause this behavior?

- A. The new vSphere 6.x cluster is running Intel CPUs instead of AMD CPUs.
- B. A suspended virtual machine cannot be migrated.
- C. The hardware virtualization feature of the CPU is not enabled on the new hosts.
- D. A vSphere Distributed Switch is required to migrate a suspended virtual machine.

Correct Answer: A

Section: (none) Explanation

Explanation/Reference:

Reference: <https://kb.vmware.com/s/article/1005764>



QUESTION 161

An administrator is performing an interactive installation of ESXi 6.x.

Which three options are available for installation? (Choose three.)

- A. DVD
- B. USB
- C. PXE
- D. Scripted
- E. Auto Deploy

Correct Answer: ABC

Section: (none)

Explanation

Explanation/Reference:

QUESTION 162

What are two ways to identify TCP/IP stack information? (Choose two.)

- A. Using the vSphere Web Client
- B. Using `esxcli network ip netstack`
- C. Using `esxcfg-netstack`
- D. Using the vSphere Client

Correct Answer: AB

Section: (none) **Explanation**

Explanation/Reference:

QUESTION 163

An application running in a virtual machine is experiencing performance issues. When utilizing performance monitoring utilities, it is noted that the CPU Utilization of the application is at 100%.

Which two scenarios are probable causes of the CPU contention for the application? (Choose two.)

- A. There is a network I/O constraint.
- B. There is a storage I/O constraint.
- C. There is insufficient disk space assigned to the virtual machine.
- D. The application is not virtualization aware.

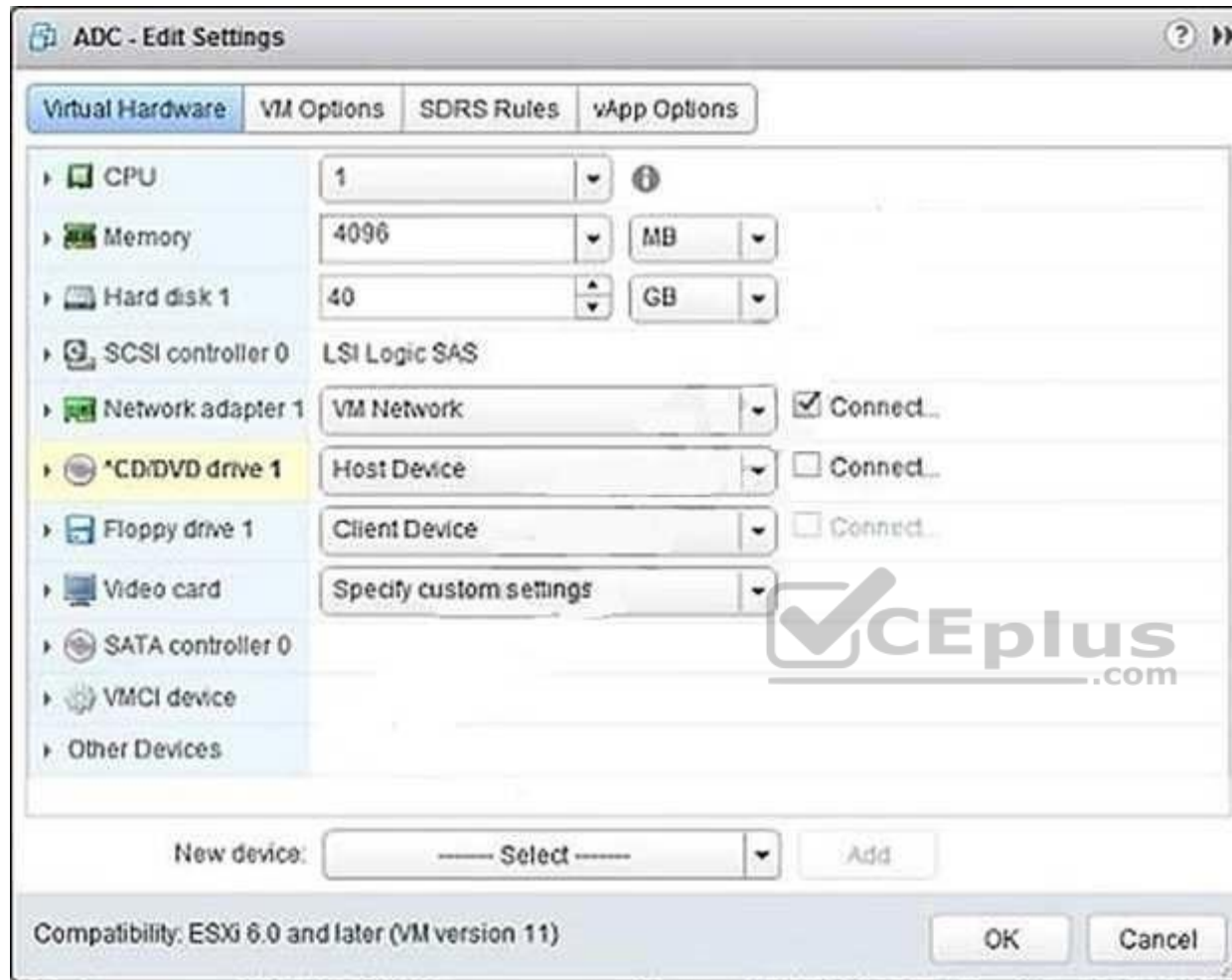
Correct Answer: AB

Section: (none) **Explanation**

Explanation/Reference:

QUESTION 164

Refer to the Exhibit. An administrator is installing Windows into a virtual machine. The DVD has been mounted on the Host and configured for the virtual machine as shown in the Exhibit.



Based on the exhibit, when the virtual machine is booted, why would it attempt to search for a PXE server?

- A. The CD/DVD device is not connected.
- B. The ISO is in the incorrect storage location.
- C. The OS minimum requirements have not been met.
- D. The CD/DVD device is not set to Client Device.

Correct Answer: A

Section: (none)

Explanation

Explanation/Reference:

QUESTION 165

A virtual machine template is accidentally removed from the vCenter Server Inventory.

Which method would be used to recover the template back into the environment?

- A. Use the datastore browser to locate the template, then right click and add the .vmtx file to inventory.
- B. Use the datastore browser to locate the template, then right click and add the .vmx file to inventory.
- C. Using the Managed Object Browser and adding the template from the ManagedObjectReference:GuestFileManager object.
- D. Using the Managed Object Browser and adding the template from the ManagedObjectReference:VirtualDiskManager object.

Correct Answer: A

Section: (none) **Explanation**

Explanation/Reference:



QUESTION 166

When you add an ESXi 6.x host to a new Cluster, which vSphere object owns the CPU and Memory resources of the hosts?

- A. vCenter Server
- B. Datacenter
- C. Cluster
- D. Host

Correct Answer: C

Section: (none) **Explanation**

Explanation/Reference:

QUESTION 167

What two IT infrastructure components are virtualized by vSphere Essentials? (Choose two.)

- A. Networks

- B. Applications
- C. Storage
- D. Management

Correct Answer: AC

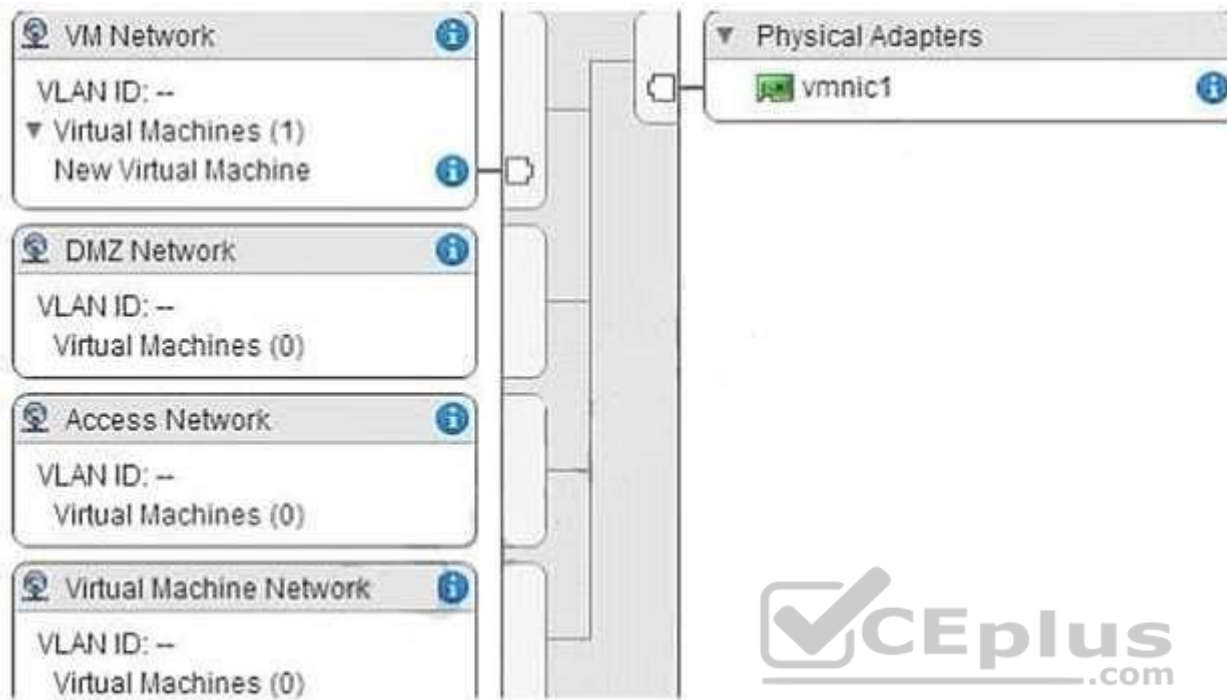
Section: (none) **Explanation**

Explanation/Reference:

QUESTION 168

Refer to the Exhibit. A vSphere 6.x Standard Switch is configured with 4 virtual machine portgroups, as shown in the exhibit.





Which portgroup would be utilized by default when creating a new virtual machine?

- A. Access Network
- B. DMZ Network
- C. VM Network
- D. Virtual Machine Network

Correct Answer: A

Section: (none) **Explanation**

Explanation/Reference:

Explanation:

The answer is Access Network because it selects the portgroup based on the first letter according to the alphabet **QUESTION 169**

An administrator reports that the System Event log data is only available for 24 hours when reviewing the Hardware Status tab.

Which condition could be responsible for the loss of data?

- A. A Reset event log was executed.
- B. The statistical collection level was set to a value of 1.
- C. The boot disk of the host is corrupt.
- D. Syslog has been configured at the vCenter Server level.

Correct Answer: A

Section: (none)

Explanation

Explanation/Reference:

Reference: <https://kb.vmware.com/s/article/2011531>

QUESTION 170

A vApp is running out of compute resources when overall activity is high within the resource pool. At other times, everything is fine.

What should be done to resolve this issue?

- A. Increase the size of the resource pool Shares.
- B. Set the vApp's CPU and Memory Reservation Type to Expandable.
- C. Set the vApp's CPU and Memory Limit to Unlimited.
- D. Create a new resource pool with the existing hardware configuration.

Correct Answer: B

Section: (none) **Explanation**

Explanation/Reference:

QUESTION 171

An administrator logs into the vSphere Web Client, but is unable to see any hosts and clusters.

Which two options could fix the problem? (Choose two.)

- A. Verify that the client web browser and vCenter Server are in the same broadcast domain.
- B. Verify that the vCenter Server system is registered with the same Platform Services Controller as the vSphere Web Client.
- C. Log in to the vCenter Server as a user within the Active Directory domain.
- D. Log in to the vSphere Web Client as a user with permissions on the vCenter Server system.

Correct Answer: BD

Section: (none) **Explanation**

Explanation/Reference:

QUESTION 172

What component must be installed prior to deploying a vCenter Server in vSphere 6.x?

- A. vCenter Identity Services
- B. Platform Services Controller
- C. vCenter Single Sign-On
- D. Client Integration Plug-In

Correct Answer: B

Section: (none) **Explanation**

Explanation/Reference:

Reference: <https://docs.vmware.com/en/VMware-vSphere/6.0/com.vmware.vsphere.upgrade.doc/GUID-ACCD2814-0F0A-4786-96C0-8C9BB57A4616.html>

QUESTION 173

An administrator deploys vRealize Operations into a vSphere 6.x environment.

After the deployment, the administrator notices that badges are not appearing.

What is a likely cause of this behavior?

- A. Badges do not appear until you register vRealize Operations with vCenter Server.
- B. Badges do not appear until you register a vCenter Server in vRealize Operations.
- C. The vRealize Operations appliance needs to be redeployed.
- D. The vCenter Server appliance needs to be redeployed.

Correct Answer: A

Section: (none)

Explanation

Explanation/Reference:

QUESTION 174

What are two possible causes of Storage Distributed Resource Scheduler (SDRS) being disabled on one or more virtual machine disks in a datastore cluster?
(Choose two.)

- A. The virtual machine has vSphere Fault Tolerance disabled.
- B. The virtual machine is a template.
- C. The virtual machine swap file is on a shared datastore.
- D. The disk is a CD-ROM/ISO file.

Correct Answer: BD

Section: (none)

Explanation

Explanation/Reference:

Reference: <https://docs.vmware.com/en/VMware-vSphere/6.0/com.vmware.vsphere.troubleshooting.doc/GUID-B749AAA0-7B67-4A79-BEDC-395DFEC9FC60.html>

QUESTION 175

You are editing the management network configuration of an ESXi 6.x Host from the vSphere Web Client. You mistakenly put the incorrect VLAN in place for the management network.

What action do you need to take to correct this?

- A. You need to manually edit the configuration on the host with command line utilities.
- B. No action is required. By default, ESXi rolls back configuration changes that disconnect the host.
- C. The ESXi host system configuration will need to be restored to the factory configuration to fix the issue.
- D. The change can be reverted in the vSphere Web Client by simply editing the switch again.

Correct Answer: B

Section: (none)

Explanation

Explanation/Reference:

Explanation:

By rolling configuration changes back, vSphere protects hosts from losing connection to vCenter Server as a result from misconfiguration of the management network. In this case, configuring the wrong VLAN on the management network would result in a lost connection to the server.

Reference: <https://docs.vmware.com/en/VMware-vSphere/6.5/com.vmware.vsphere.networking.doc/GUID-8BA411A4-8582-4C02-8489-D3D7D09A9BF0.html>

QUESTION 176

An administrator has just configured the IP address on an ESXi host from the Direct Console User Interface. How can the configuration be validated as correct without any additional tools?



<https://vceplus.com/>

- A. Add the host to vCenter Server and if it works, then all networking settings are ok.
- B. Select the Test Management Network option from the DCUI.
- C. Connect to the host with the vSphere Client and click the Test Network option.
- D. Use PowerCLI to connect to the host and initiate a network test.

Correct Answer: B

Section: (none) **Explanation**

Explanation/Reference:



QUESTION 177

An organization has an ESXi 6.x host that contains two resource pools.

The host is being relocated to a DRS cluster.

What two actions can be taken to integrate the host into the cluster, and what would happen to the existing ESXi resource pool hierarchy as a result? (Choose two.)

- A. Place all of the host's virtual machines into the DRS cluster root resource pool. The resource pools present on the host will be deleted.
- B. Create a resource pool for the ESXi host's virtual machines and resource pools. The resource pools present on the host will be deleted.
- C. Place all of the host's virtual machines into the DRS cluster root resource pool. The resource pools present on the host will be preserved.
- D. Create a resource pool for the ESXi host's virtual machines and resource pools. The resource pools present on the host will be preserved.

Correct Answer: AD

Section: (none) **Explanation**

Explanation/Reference:

Reference: <https://pubs.vmware.com/vsphere-51/index.jsp?topic=%2Fcom.vmware.vsphere.vcenterhost.doc%2FGUID-0BCBA61B-8DCE-4069-B00395E7F9353B16.html>

QUESTION 178

An administrator has configured an alarm to be notified when a virtual machine meets either of these conditions:

High virtual CPU
High active memory consumption.

The alarm is only triggering when both of the conditions are met. What can be done to correct the alarm behavior?

- A. Edit the alarm and select Trigger if ANY of the following conditions are satisfied.
- B. Edit the alarm and select Trigger if ALL of the following conditions are satisfied.
- C. Create two separate alarms, one for CPU and one for memory and link them together with ESXCLI.
- D. Delete the existing alarm and create a new event based alarm.

Correct Answer: A

Section: (none) Explanation

Explanation/Reference:

**QUESTION 179**

What may be a cause for failure to unmount an NFS datastore?

- A. It has active snapshot files.
- B. It is being used for High Availability (HA) heartbeat.
- C. It is part of a Cluster.
- D. It is managed by Distributed Resource Scheduler (DRS).

Correct Answer: A

Section: (none)

Explanation

Explanation/Reference:

QUESTION 180

Which two statements are true about deploying and using vSphere Replication? (Choose two.)

- A. ESXi hosts managed by a single vCenter Server instance require a connection between the two vSphere Replication appliances.
- B. Sites managed by different vCenter Server instances require a connection between the two vSphere Replication appliances.
- C. Sites managed by different vCenter Server instances require the use of Site Recovery Manager and a connection between the two vSphere Replication appliances.
- D. ESXi hosts managed by a single vCenter Server instance require a single vSphere Replication appliance.

Correct Answer: BD

Section: (none) **Explanation**

Explanation/Reference:

QUESTION 181

An attempt to enable vSphere Fault Tolerance for a powered-on virtual machine fails.

Which two scenarios would result in this failure? (Choose two.)

- A. The virtual machine has three vCPUs configured.
- B. The host on which the virtual machine is running has insufficient memory resources.
- C. The virtual machine has insufficient resources to accommodate full reservation plus the overhead memory.
- D. VMware High Availability is enabled on the cluster of which this host is a member.

Correct Answer: BC

Section: (none) **Explanation**

Explanation/Reference:

Reference: <https://docs.vmware.com/en/VMware-vSphere/6.0/com.vmware.vsphere.avail.doc/GUID-83FE5A45-8260-436B-A603-B8CBD2A1A611.html>

QUESTION 182

A Fault Tolerance (FT) virtual machine with four vCPUs is experiencing high latency when performing ICMP and Application tests.

What are three potential causes that may be attributing to this latency? (Choose three.)

- A. The FT network has insufficient bandwidth and is running on a 1GB Link.
- B. The FT network is on a particularly high latency link.
- C. The FT network has been configured with Network I/O Control.

- D. The FT virtual machine is running an e1000 network adapter.
- E. The FT virtual machine is running on poor performing network-based storage.

Correct Answer: ABC

Section: (none)

Explanation

Explanation/Reference:

Reference: <https://docs.vmware.com/en/VMware-vSphere/6.5/com.vmware.vsphere.troubleshooting.doc/GUID-6F893381-BD0B-4825-B4CD-414854A9D9D9.html>

QUESTION 183

VMware tools is failing to install on a Microsoft Windows virtual machine.

What are two possible situations that would prevent the installation? (Choose two.)

- A. The VMware tools installation media is corrupt.
- B. The incorrect Operating System was selected in the virtual machine options.
- C. The software prerequisites have not been installed.
- D. The prerequisite services have not been started.

Correct Answer: AB

Section: (none) **Explanation**

Explanation/Reference:

QUESTION 184

What is true regarding datastores on ESXi 6.x?

- A. NFS 4.1 datastore does not support Fault Tolerance (FT)
- B. VMFS3 and VMFS5 datastores can be newly created
- C. NFS datastore can be concurrently mounted using NFS 4.1 on one host and NFS on another
- D. NFS 3.0 datastore does not support Fault Tolerance (FT)

Correct Answer: B

Section: (none)

Explanation

Explanation/Reference:

QUESTION 185

An administrator is performing a scripted installation of ESXi 6.x.

In which three locations does the script need to be? (Choose three.)

- A. PXE Server
- B. HTTPS
- C. FTP
- D. NFS
- E. VVOLs Datastore

Correct Answer: BCD

Section: (none) **Explanation**

Explanation/Reference:

QUESTION 186

Which three features are not supported when using Fault Tolerance in vSphere 6.x? (Choose three.)

- A. Virtual Volumes (VVOLS)
- B. Storage vMotion
- C. Virtual Machine Component Protection
- D. vMotion
- E. vSphere Distributed Switches

Correct Answer: ABC

Section: (none)

Explanation

Explanation/Reference:

QUESTION 187

A user is trying to retrieve objects from a SharePoint server and finds the request is taking an excessive amount of time. An administrator tries to isolate the issue and notes the following:

- Application performance is poor when compared to virtual machines on other hosts.
- Performance improves when the virtual machine is moved to another host.

The virtual machine encounters higher than expected CPU %Ready times.
What conclusion can be reached regarding the performance issues for this virtual machine?

- A. Host Power Management is directly impacting virtual machine performance.
- B. The virtual machine has a large number of snapshots.
- C. The Path Selection Policy for the storage device is set differently on the affected host.
- D. Network I/O control is configured for the portgroup.

Correct Answer: A

Section: (none) **Explanation**

Explanation/Reference:

Reference: <https://kb.vmware.com/s/article/1018206>

QUESTION 188

Which three are architecture components of vRealize Operations? (Choose three.)

- A. Identity Server
- B. Administrative Server
- C. Analytics Server
- D. Database Server
- E. Connection Broker



Correct Answer: BCD

Section: (none)

Explanation

Explanation/Reference:

QUESTION 189

Which load balancing policy, previously limited to vSphere Distributed Switches, is now available on vSphere Standard Switches with vSphere 6.x?

- A. Route based on physical NIC workload
- B. Route based on IP Hash
- C. Route based on the originating virtual port
- D. Route based on Source MAC Hash

Correct Answer: A

Section: (none) Explanation

Explanation/Reference:

Compare both standard and distributed switch in the 5.1 version documentation (first link) to the 6.0 version documentation (second link) below:

<https://pubs.vmware.com/vsphere-51/index.jsp?topic=%2Fcom.vmware.vsphere.networking.doc%2FGUID-D5EA6315-5DCD-463E-A701-B3D8D9250FB5.html>

<https://docs.vmware.com/en/VMware-vSphere/6.0/com.vmware.vsphere.networking.doc/GUID-D34B1ADD-B8A7-43CD-AA7E-2832A0F7EE76.html>

QUESTION 190

An administrator is attempting to enable Storage I/O Control on a datastore, but it is failing.

What is the likely reason for this failure?

- A. The host is connected to a datastore is running on ESX 4.0.
- B. The host is connected to a Fibre Channel storage array.
- C. The datastore has multiple extents.
- D. The datastore is managed by a single vCenter Server.

Correct Answer: C

Section: (none)

Explanation



Explanation/Reference:

Reference: <https://kb.vmware.com/s/article/1022091>

QUESTION 191

An administrator is unable to create the first group in a new vRealize Operations environment.

What is the likely cause of the problem?

- A. There are no group types defined.
- B. The group is not defined in SSO.
- C. There are more than 32 group types defined.
- D. The description for the group is not provided.

Correct Answer: A

Section: (none) Explanation

Explanation/Reference:

Reference: <https://www.vmware.com/support/vrops/doc/vrops-601-release-notes.html>

QUESTION 192

Which two statements are true about LACP support with the vSphere Distributed Switch? (Choose two.)

- A. LACP works with MAC hash load balancing.
- B. LACP does not work with port mirroring.
- C. LACP works with software iSCSI multipathing.
- D. LACP does not work with host profiles.

Correct Answer: BD

Section: (none)

Explanation

Explanation/Reference:

Reference <https://docs.vmware.com/en/VMware-vSphere/6.5/com.vmware.vsphere.networking.doc/GUID-3FDE1E96-9217-4FE6-8B76-6E3A64766828.html>

QUESTION 193

What three types of widgets can be added to a vRealize Log Insight Custom Dashboard? (Choose three.)

- A. badge widget
- B. event trends widget
- C. query list widget
- D. heatmap widget
- E. chart widget

Correct Answer: BCE

Section: (none) **Explanation**

Explanation/Reference:

Reference <https://docs.vmware.com/en/vRealize-Log-Insight/4.3/com.vmware.log-insight.user.doc/GUID-ACF41E9A-4DC4-4071-AE45-FA296525D64C.html>

QUESTION 194

Which of the following options are configurable in a Resource Pool? (Choose two.)

- A. CPU affinity
- B. CPU Shares
- C. Startup/Shutdown order
- D. Memory Limit

Correct Answer: BD

Section: (none)

Explanation

Explanation/Reference:

QUESTION 195

What two object types can be created inside of vApp? (Choose two.)

- A. vApp
- B. Resource Pool
- C. VM Folder
- D. Virtual Machine

Correct Answer: BD

Section: (none) Explanation

Explanation/Reference:

Reference https://docs.vmware.com/en/VMware-vSphere/6.5/com.vmware.vsphere.vm_admin.doc/GUID-12FDA1A4-6214-463B-8D73-FE25454C642E.html

QUESTION 196

What is the maximum supported number of vCPU per VM in VMware vSphere 6.5?

- A. 256
- B. 128
- C. 64
- D. 32

Correct Answer: B

Section: (none) Explanation

Explanation/Reference:

Reference: <https://docs.vmware.com/en/VMware-vSphere/6.5/com.vmware.vsphere.configmax.doc/GUID-456C4E8F-E8CC-44FD-B121-18DA64BDCC87.html>

QUESTION 197

What are two valid methods to deploy an OVF template which consists of two or more VMs? (Choose two.)

- A. deploy on the standalone host connected to vCenter Server

- B. deploy on a vSphere DRS enabled cluster
- C. deploy on a vSphere HA enabled cluster
- D. deploy on the VMware vSphere Hypervisor

Correct Answer: BD

Section: (none) **Explanation**

Explanation/Reference:

QUESTION 198

A vSphere Administrator uses vMotion to migrate a virtual machine between two ESXi hosts and notices that they can no longer ping the VM. What is the cause?

- A. The destination host has an incorrect VLAN tag on the virtual machine port group for the VM
- B. The destination host has two port groups with the same VLAN tag
- C. The virtual machine has RDMS attached
- D. There's an MTU mismatch

Correct Answer: B

Section: (none) **Explanation**

Explanation/Reference:

QUESTION 199

Which three options are required to use vSphere DRS features successfully? (Choose three.)



<https://vceplus.com/>

- A. Shared Storage

- B. Processor Compatibility
- C. Datastore Cluster
- D. Shared VMFS Volume
- E. Resource Pools

Correct Answer: ABD

Section: (none) **Explanation**

Explanation/Reference:

Reference: <https://docs.vmware.com/en/VMware-vSphere/6.0/com.vmware.vsphere.resmgmt.doc/GUID-CAF3CDC4-469F-4FA4-ACFD-24F5F36847EA.html>

QUESTION 200

When using vSAN, all the storage characteristics are specified by Storage Policies. Which parameter in vSAN Storage Policies can increase performance in a cache miss situation? (Choose the best answer.)

- A. Number of disk stripes per object
- B. Number of failures to tolerate
- C. Object space reservation (%)
- D. Force provisioning



Correct Answer: A

Section: (none) **Explanation**

Explanation/Reference:

Reference: <https://blogs.vmware.com/virtualblocks/2016/09/19/vsan-stripes/>

QUESTION 201

What are the two minimum configurations of a disk group in a vSAN host? (Choose two.)

- A. 1 SSD drive for the caching tier and 1 or more HDDs for the capacity tier
- B. 1 SSD drive for the caching tier and 1 or more SSDs for the capacity tier
- C. 2 or more SSD drives for the caching tier and 2 or more SSDs for the capacity tier
- D. 2 or more SSD drives for the caching tier and 2 or more HDDs for the capacity tier

Correct Answer: AB

Section: (none) **Explanation**

Explanation/Reference:

<https://docs.vmware.com/en/VMware-vSphere/6.5/com.vmware.vsphere.virtualsan.doc/GUID-4B738A10-4506-4D70-8339-28D8C8331A15.html>

QUESTION 202

A vSphere Administrator has an unresponsive ESXi 6.x host and only has access to the Direct Console User Interface. Which option would allow the Administrator to review live VMkernel logging? (Choose the best answer.)

- A. Alt + F8
- B. Alt + F7
- C. Alt + F11
- D. Alt + F12

Correct Answer: D

Section: (none) **Explanation**

Explanation/Reference:

Reference: <https://kb.vmware.com/s/article/2148363>

QUESTION 203

A vSphere Administrator observes that no devices are showing up under an iSCSI Storage Adapter. Which three are valid troubleshooting methods? (Choose three.)

- A. Log in to the ESXi Shell, run the vmkping target_ip command to verify that the VMkernel interface on the host can ping the iSCSI targets
- B. Use the nc -z target_ip 3260 command to verify that the ESXi host can reach the iSCSI TCP port (default 3260) on the storage array
- C. Verify that the MTU size is lower than 9,000 bytes
- D. Verify that the CHAP authentication settings are correct
- E. If Jumbo Frames are required, verify that packet fragmentation is allowed

Correct Answer: ABD

Section: (none) **Explanation**

Explanation/Reference:

Reference: <https://kb.vmware.com/s/article/1003681>

QUESTION 204

What are two possible Startup Actions available to VMs within a vApp? (Choose two.)

- A. None
- B. Guest Shutdown

C. Power OffD. Power On

Correct Answer: AD

Section: (none)

Explanation

Explanation/Reference:

Reference:

https://docs.vmware.com/en/VMware-vSphere/6.5/com.vmware.vsphere.vm_admin.doc/GUID-0FAB05D4-22F7-4665-B42A-0FA4B360B398.html

QUESTION 205

Which two statements are true using Resource Pools? (Choose two.)

- A. Resource Pools require vSphere HA to be enabled
- B. Resource Pools compartmentalize all resources in a datacenter
- C. Resource Pools require vSphere DRS to be enabled
- D. Resource Pools compartmentalize all resources in a cluster

Correct Answer: CD

Section: (none) **Explanation**

Explanation/Reference:

Reference: <https://docs.vmware.com/en/VMware-vSphere/6.5/com.vmware.vsphere.resmgmt.doc/GUID-0F6C6709-A5DA-4D38-BE08-6CB1002DD13D.html>
<https://communities.vmware.com/thread/145338>

QUESTION 206

Which two types of network traffic can be used for vSphere High Availability (HA)? (Choose two.)

- A. VM Network traffic
- B. vMotion network traffic
- C. VMware vSAN network traffic
- D. Management network traffic

Correct Answer: CD

Section: (none)

Explanation

Explanation/Reference:

Reference:

<https://docs.vmware.com/en/VMware-vSphere/6.5/com.vmware.vsphere.virtualsan.doc/GUID-D68890D8-841A-4BD1-ACA1-DA3D25B6A37A.html>

QUESTION 207

Which two components are built into the vCenter Server Appliance 6.5? (Choose two.)

- A. vSphere Auto Deploy
- B. vRealize Orchestrator
- C. vCenter Converter
- D. VMware vSphere Update Manager

Correct Answer: AD

Section: (none) **Explanation**

Explanation/Reference:

Reference: <https://docs.vmware.com/en/VMware-vSphere/6.5/com.vmware.vsphere.install.doc/GUID-78933728-7F02-43AF-ABD8-0BDCE10418A6.html>

QUESTION 208

An Administrator has been tasked with deploying a new vSphere 6.x environment spanning multiple geographical locations while preserving a single source of authentication?

Which vCenter Server topology does VMware recommend for this scenario?

- A. Multi-Site SSO with:
an embedded PSC and vCenter Server instance at the primary location no
PSC at remote locations, vCenter Server instances only
- B. Multi-Site SSO with:
An embedded PSC and vCenter Server instance at each location
- C. Multi-Site SSO with:
One or more external PSC and vCenter Server instances at each location
- D. Multi-Site with:
One or more external PSC at the primary location only
Embedded PSC and vCenter Server instances at remote locations

Correct Answer: C

Section: (none) **Explanation**

Explanation/Reference:

Reference: <https://docs.vmware.com/en/VMware-vSphere/6.5/com.vmware.vsphere.install.doc/GUID-62CC201A-01ED-4116-8604-FF123481DAFC.html>

QUESTION 209

A junior vSphere Administrator takes a snapshot before logging into a VM to preserve the current state in case of a problem. Assuming this process is repeated every day for over 30 days, what two results will happen? (Choose two.)

- A. The virtual machine can end up consuming more space on the datastore than assigned
- B. The virtual machine's performance will decrease
- C. The administrator will have backups for the entire month
- D. The administrator has successfully cloned the VM 30 times

Correct Answer: AB

Section: (none) **Explanation**

Explanation/Reference:

Reference: <https://kb.vmware.com/s/article/1025279>

QUESTION 210

When specifying a trigger action for an Alarm Definition, what two alarm state changes are available to be triggered on? (Choose two.)

- A. from normal to warning
- B. from normal to critical
- C. from critical to normal
- D. from critical to warning



Correct Answer: AD

Section: (none) **Explanation**

Explanation/Reference:

Reference: <https://www.youtube.com/watch?v=8vWNVBDPcu4>

QUESTION 211

A vSphere Administrator must purge orphaned data in a vCenter Server database. Which option will let the Administrator accomplish this task?

- A. Locate the `cleanup_orphaned_data_PostgresSQL.sql` script in the vCSA ISO image, copy it to the vCSA filesystem and use the `psql` utility to run it B. Use the vCenter Server Appliance Migration Tool
- C. Enter the following command in the vCSA Shell: `/opt/vmware/vpostgres/9.4/bin/psql -U postgres -d VCDB -c 'dropdb VCDB'`
- D. Run the `less postgresql.conf | grep autovacuum` command from the `/storage/db/vpostgres/` directory in the vCSA Shell

Correct Answer: A **Section:**
(none) **Explanation**

Explanation/Reference:

Reference: <https://docs.vmware.com/en/VMware-vSphere/6.5/com.vmware.vsphere.upgrade.doc/GUID-7B1306D9-0B0D-4E01-8B9D-31B94F0ABC60.html>

QUESTION 212

Which two locations are supported for an ESXi installation script to reside on? (Choose two.)

- A. SCP Server
- B. FTP Server
- C. CIFS Server
- D. NFS Server

Correct Answer: BD
Section: (none)
Explanation

Explanation/Reference:

Reference: <https://docs.vmware.com/en/VMware-vSphere/6.5/com.vmware.vsphere.install.doc/GUID-00224A32-C5C5-4713-969A-C50FF4DED8F8.html>

QUESTION 213

What field or option is required when creating a VM snapshot? (Choose the best answer.)

- A. Snapshot description
- B. Quiesce guest file system
- C. Snapshot the virtual machine's memory
- D. Snapshot name

Correct Answer: D
Section: (none)
Explanation

Explanation/Reference:

Reference: <https://kb.vmware.com/s/article/2032907>

QUESTION 214

In the vSphere environment there is a mix of ESXi hosts with versions 5.5, 6.0, and 6.5 in one DRS cluster. What is the highest virtual machine compatibility that can be used on all the hosts?

- A. vmx-10 B. vmx-9
- C. vmx-11
- D. vmx-13

Correct Answer: A

Section: (none) **Explanation**

Explanation/Reference:

Reference: <https://kb.vmware.com/s/article/1003746>

QUESTION 215

When viewing the Advanced Performance Charts in the vSphere Web Client, what two options determine the amount of historical data available in the chart? (Choose two.)

- A. Inventory object
- B. Statistical level
- C. Number of metric groups
- D. Collection interval

Correct Answer: BD

Section: (none) **Explanation**

Explanation/Reference:

Reference: <https://pubs.vmware.com/vsphere-51/index.jsp?topic=%2Fcom.vmware.vsphere.monitoring.doc%2FGUID-C1290068-BEE7-44FE-908799A4447DB1EA.html>

QUESTION 216

What ESXi command line command can be used to troubleshoot basic network connectivity?

- A. vmkping
- B. vim-cmd
- C. vmware- lv
- D. chconfig

Correct Answer: A

Section: (none) **Explanation**

Explanation/Reference:

Reference: <https://kb.vmware.com/s/article/2020669>

QUESTION 217

What load balancing appliance does VMware recommended for deploying a vRealize Log Insight cluster?

- A. VMware NSX Load Balancer
- B. integrated Load Balancer
- C. F5 Big-IP
- D. Citrix NetScaler

Correct Answer: B

Section: (none)

Explanation

Explanation/Reference:

Explanation:

You can enable the vRealize Log Insight integrated load balancer (ILB) on a vRealize Log Insight cluster to ensure that incoming ingestion traffic is accepted by vRealize Log Insight even if some vRealize Log Insight nodes become unavailable. You can also configure multiple virtual IP addresses. It is highly recommended that you enable the ILB in a vRealize Log Insight cluster environment.

Reference: <https://docs.vmware.com/en/vRealize-Log-Insight/4.0/com.vmware.log-insight.administration.doc/GUID-7B981536-F80C-458F-A1962AFD4B1D33C2.html>

QUESTION 218

A vSphere Administrator is tasked with implementing a production VMware vSAN cluster and has followed the design and sizing guide to correctly size the environment.

Which two requirements represent valid VMware recommendations? (Choose two.)

- A. A disk group must be composed of more than one cache disk and at least one capacity disk.
- B. All-Flash configurations do not require a caching tier.
- C. A disk group must be composed of one cache disc and at least one capacity disk.
- D. The cache tier should be sized to no less than 10% of the capacity tier.

Correct Answer: CD

Section: (none) **Explanation**

Explanation/Reference:

QUESTION 219

A vSphere Administrator currently has three two-socket servers that meet the requirements for VMware vSAN. Currently there is VMware Essentials Plus licensing for all servers. What additional licensing is required to implement a solution based on VMware vSAN?

- A. Upgrade to VMware vSphere Standard
- B. Upgrade to VMware vSphere Enterprise Plus
- C. None is required. VMware vSAN is built into the Kernel.
- D. Upgrade to VMware vSAN Standard.

Correct Answer: C

Section: (none)

Explanation

Explanation/Reference:

Reference: <https://www.vmware.com/content/dam/digitalmarketing/vmware/en/pdf/products/vsan/vmware-vsan-datasheet.pdf>

QUESTION 220

Which statement is true when adding a VM to a Resource Pool?

- A. The VM share value (%Shares) adjusts to the Resource Pool.
- B. The VM reservation changes.
- C. The VM limit changes.
- D. The VM share value (%Shares) remains unchanged.

Correct Answer: A

Section: (none)

Explanation

Explanation/Reference:

Reference: https://pubs.vmware.com/vsphere-4-esx-vcenter/index.jsp?topic=/com.vmware.vsphere.resourcecemanagement.doc_40/managing_resource_pools/t_add_virtual_machines_to_a_resource_pool.html



<https://vceplus.com/>

