

MS-100.88q

Number: MS-100
Passing Score: 800
Time Limit: 120 min

MS-100



Website: <https://vceplus.com>
VCE to PDF Converter: <https://vceplus.com/vce-to-pdf/>
Facebook: <https://www.facebook.com/VCE.For.All.VN/>
Twitter : https://twitter.com/VCE_Plus

<https://vceplus.com/>

Microsoft 365 Identity and Services

Question Set 1

QUESTION 1

Note: This question is part of a series of questions that present the same scenario. Each question in the series contains a unique solution that might meet the stated goals. Some question sets might have more than one correct solution, while others might not have a correct solution.

After you answer a question in this section, you will NOT be able to return to it. As a result, these questions will not appear in the review screen.

Your company has a Microsoft Office 365 tenant.

You suspect that several Office 365 features were recently updated.

You need to view a list of the features that were recently updated in the tenant.

Solution: You review the Security & Compliance report in the Microsoft 365 admin center.

Does this meet the goal?

A. Yes

B. No

Correct Answer: B

Section: [none]

Explanation

Explanation/Reference:



QUESTION 2

You recently migrated your on-premises email solution to Microsoft Exchange Online and are evaluating which licenses to purchase.

You want the members of two groups named IT and Managers to be able to use the features shown in the following table.

Feature	Available to
Microsoft Azure Active Directory (Azure AD) conditional access	IT group, Managers group
Microsoft Azure Active Directory (Azure AD) Privileged Identity Management	IT group

The IT group contains 50 users. The Managers group contains 200 users.

You need to recommend which licenses must be purchased for the planned solution. The solution must minimize licensing costs.

Which licenses should you recommend?

- A. 250 Microsoft 365 E3 only
- B. 50 Microsoft 365 E3 and 200 Microsoft 365 E5
- C. 250 Microsoft 365 E5 only
- D. 200 Microsoft 365 E3 and 50 Microsoft 365 E5

Correct Answer: D

Section: [none]

Explanation

Explanation/Reference:

QUESTION 3

You have a Microsoft 365 tenant that contains Microsoft Exchange Online.

You plan to enable calendar sharing with a partner organization named adatum.com. The partner organization also has a Microsoft 365 tenant.

You need to ensure that the calendar of every user is available to the users in adatum.com immediately.

What should you do?

- A. From the Exchange admin center, create a sharing policy.
- B. From the Exchange admin center, create a new organization relationship.
- C. From the Microsoft 365 admin center, modify the Organization profile settings.
- D. From the Microsoft 365 admin center, configure external site sharing.

Correct Answer: B

Section: [none]

Explanation

Explanation/Reference:

References: <https://docs.microsoft.com/en-us/exchange/sharing/organization-relationships/create-an-organization-relationship>

QUESTION 4

Your company has an on-premises Microsoft Exchange Server 2016 organization and a Microsoft 365 Enterprise subscription.

You plan to migrate mailboxes and groups to Exchange Online.

You start a new migration batch.

Users report slow performance when they use the on-premises Exchange Server organization.

You discover that the migration is causing the slow performance.

You need to reduce the impact of the mailbox migration on the end-users.

What should you do?

- A. Create a mail flow rule.
- B. Configure back pressure.
- C. Modify the migration endpoint settings.
- D. Create a throttling policy.



Correct Answer: C

Section: [none]

Explanation

Explanation/Reference:

Explanation:

You can reduce the maximum number of concurrent mailbox migrations.

QUESTION 5

You have a Microsoft 365 subscription.

You need to prevent phishing email messages from being delivered to your organization.

What should you do?

- A. From the Exchange admin center, create an anti-malware policy.

- B. From Security & Compliance, create a DLP policy.
- C. From Security & Compliance, create a new threat management policy.
- D. From the Exchange admin center, create a spam filter policy.

Correct Answer: C

Section: [none]

Explanation

Explanation/Reference:

References: <https://docs.microsoft.com/en-us/office365/securitycompliance/set-up-anti-phishing-policies>

QUESTION 6

You have a Microsoft 365 subscription.

A new corporate security policy states that you must automatically send DLP incident reports to the users in the legal department.

You need to schedule the email delivery of the reports. The solution must ensure that the reports are sent as frequently as possible.



<https://vceplus.com/>

How frequently can you share the reports?

- A. hourly
- B. monthly
- C. weekly
- D. daily

Correct Answer: C

Section: [none]

Explanation

Explanation/Reference:

QUESTION 7

Your company has a Microsoft 365 subscription.

You need to identify all the users in the subscription who are licensed for Microsoft Office 365 through a group membership. The solution must include the name of the group used to assign the license.

What should you use?

- A. the Licenses blade in the Azure portal
- B. Reports in the Microsoft 365 admin center
- C. Active users in the Microsoft 365 admin center
- D. Report in Security & Compliance

Correct Answer: A

Section: [none]

Explanation



Explanation/Reference:

QUESTION 8

Your company has a Microsoft 365 subscription.

You upload several archive PST files to Microsoft 365 by using the Security & Compliance admin center.

A month later, you attempt to run an import job for the PST files.

You discover that the PST files were deleted from Microsoft 365.

What is the most likely cause of the files being deleted? More than one answer choice may achieve the goal. Select the **BEST** answer.

- A. The PST files were corrupted and deleted by Microsoft 365 security features.
- B. PST files are deleted automatically from Microsoft 365 after 30 days.
- C. The size of the PST files exceeded a storage quota and caused the files to be deleted.

D. Another administrator deleted the PST files.

Correct Answer: B

Section: [none]

Explanation

Explanation/Reference:

References: <https://docs.microsoft.com/en-us/office365/securitycompliance/faqimporting-pst-files-to-office-365>

QUESTION 9

Your company has a main office and 20 branch offices in North America and Europe. Each branch office connects to the main office by using a WAN link. All the offices connect to the Internet and resolve external host names by using the main office connections.

You plan to deploy Microsoft 365 and to implement a direct Internet connection in each office.

You need to recommend a change to the infrastructure to provide the quickest possible access to Microsoft 365 services.

What is the best recommendation to achieve the goal? More than one answer choice may achieve the goal. Select the **BEST** answer.

- A. For all the client computers in the branch offices, modify the MTU setting by using a Group Policy object (GPO).
- B. In each branch office, deploy a proxy server that has user authentication enabled.
- C. In each branch office, deploy a firewall that has packet inspection enabled.
- D. In each branch office, configure name resolution so that all external hosts are redirected to public DNS servers directly.

Correct Answer: D

Section: [none]

Explanation

Explanation/Reference:

QUESTION 10

Your network contains an Active Directory forest named adatum.local. The forest contains 500 users and uses adatum.com as a UPN suffix.

You deploy a Microsoft 365 tenant.

You implement directory synchronization and sync only 50 support users.

You discover that five of the synchronized users have usernames that use a UPN suffix of onmicrosoft.com.

You need to ensure that all synchronized identities retain the UPN set in their on-premises user account.

What should you do?

- A. From the Microsoft 365 admin center, add adatum.com as a custom domain name.
- B. From Windows PowerShell, run the `Set-ADDomain -AllowedDNSSuffixes adatum.com` command.
- C. From Active Directory Users and Computers, modify the UPN suffix of the five user accounts.
- D. From the Microsoft 365 admin center, add adatum.local as a custom domain name.

Correct Answer: C

Section: [none]

Explanation

Explanation/Reference:

QUESTION 11

Your company has on-premises servers and a Microsoft Azure Active Directory (Azure AD) tenant.

Several months ago, the Azure AD Connect Health agent was installed on all the servers.

You review the health status of all the servers regularly.

Recently, you attempted to view the health status of a server named Server1 and discovered that the server is **NOT** listed on the Azure Active Directory Connect Servers list.

You suspect that another administrator removed Server1 from the list.

You need to ensure that you can view the health status of Server1.

What are two possible ways to achieve the goal? Each correct answer presents a complete solution.

NOTE: Each correct selection is worth one point.

- A. From Windows PowerShell, run the `Register-AzureADConnectHealthSyncAgent` cmdlet.
- B. From Azure Cloud shell, run the `Connect-AzureAD` cmdlet.
- C. From Server1, change the Azure AD Connect Health services Startup type to **Automatic (Delayed Start)**.

- D. From Server1, change the Azure AD Connect Health services Startup type to **Automatic**.
- E. From Server1, reinstall the Azure AD Connect Health agent.

Correct Answer: AE

Section: [none]

Explanation

Explanation/Reference:

QUESTION 12

You have a Microsoft 365 subscription.

You suspect that several Microsoft Office 365 applications or services were recently updated.

You need to identify which applications or services were recently updated.

What are two possible ways to achieve the goal? Each correct answer presents a complete solution.

NOTE: Each correct selection is worth one point.

- A. From the Microsoft 365 admin center, review the Message center blade.
- B. From the Office 365 Admin mobile app, review the messages.
- C. From the Microsoft 365 admin center, review the Products blade.
- D. From the Microsoft 365 admin center, review the Service health blade.

Correct Answer: AB

Section: [none]

Explanation

Explanation/Reference:

QUESTION 13

Note: This question is part of a series of questions that present the same scenario. Each question in the series contains a unique solution that might meet the stated goals. Some question sets might have more than one correct solution, while others might not have a correct solution.

After you answer a question in this section, you will NOT be able to return to it. As a result, these questions will not appear in the review screen.

Your company has a Microsoft Office 365 tenant.

You suspect that several Office 365 features were recently updated.

You need to view a list of the features that were recently updated in the tenant.

Solution: You use **Monitoring and reports** from the Compliance admin center.

Does this meet the goal?

A. Yes

B. No

Correct Answer: B

Section: [none]

Explanation

Explanation/Reference:



QUESTION 14

DRAG DROP

Your network contains an on-premises Active Directory domain named contoso.com that is synced to a Microsoft Azure Active Directory (Azure AD) tenant. The on-premises domain contains a server named Server1 that runs Windows Server 2016 and 200 client computers that run Windows 10.

Your company purchases a Microsoft 365 subscription.

On Server1, you create a file share named Share1. You extract the Microsoft Office Deployment Tool (ODT) to Share1.

You need to deploy Office 365 ProPlus, and the French language pack from Share1 to the Windows 10 computers.

Which three actions should you perform in sequence? To answer, move the appropriate actions from the list of actions to the answer area and arrange them in the correct order.

Select and Place:

Actions

Create an XML configuration file.

On Server1, run setup.exe and specify the /configure parameter.

On every client computer, run setup.exe and specify the /configure parameter.

On Server1, run setup.exe and specify the /package parameter.

On every client computer, run setup.exe and specify the /download parameter.

On Server1, run setup.exe and specify the /download parameter.

Answer Area

Correct Answer:



Actions	Answer Area
	On Server1, run setup.exe and specify the /download parameter.
On Server1, run setup.exe and specify the /configure parameter.	Create an XML configuration file.
On Server1, run setup.exe and specify the /package parameter.	On every client computer, run setup.exe and specify the /configure parameter.
On every client computer, run setup.exe and specify the /download parameter.	

Section: [none]

Explanation

Explanation/Reference:

Explanation:

Note:

Step 1: Create an XML configuration file with the source path and download path for the installation files.

Step 2: On the deployment server, run the ODT executable in download mode and with a reference to the XML configuration file.

Step 3: Create another XML configuration file with the source path to the installation files.

Step 4: On the client computer, run the ODT executable in configure mode and with a reference to the XML configuration file.

References: <https://docs.microsoft.com/en-us/DeployOffice/overview-of-the-office-2016-deployment-tool>

QUESTION 15

Note: This question is part of a series of questions that present the same scenario. Each question in the series contains a unique solution that might meet the stated goals. Some question sets might have more than one correct solution, while others might not have a correct solution.

After you answer a question in this section, you will NOT be able to return to it. As a result, these questions will not appear in the review screen.

Your network contains an Active Directory domain named contoso.com that is synced to Microsoft Azure Active Directory (Azure AD).

You manage Windows 10 devices by using Microsoft System Center Configuration Manager (Current Branch).

You configure a pilot for co-management.

You add a new device named Device1 to the domain. You install the Configuration Manager client on Device1.

You need to ensure that you can manage Device1 by using Microsoft Intune and Configuration Manager.

Solution: You add Device1 to an Active Directory group.

Does this meet the goal?

A. Yes

B. No

Correct Answer: A

Section: [none]

Explanation



Explanation/Reference:

References: <https://www.sccconfigmgr.com/2017/11/30/how-to-setup-co-management-part-6/>

QUESTION 16

Note: This question is part of a series of questions that present the same scenario. Each question in the series contains a unique solution that might meet the stated goals. Some question sets might have more than one correct solution, while others might not have a correct solution.

After you answer a question in this section, you will NOT be able to return to it. As a result, these questions will not appear in the review screen.

Your network contains an Active Directory domain named contoso.com that is synced to Microsoft Azure Active Directory (Azure AD).

You manage Windows 10 devices by using Microsoft System Center Configuration Manager (Current Branch).

You configure a pilot for co-management.

You add a new device named Device1 to the domain. You install the Configuration Manager client on Device1.

You need to ensure that you can manage Device1 by using Microsoft Intune and Configuration Manager.

Solution: Define a Configuration Manager device collection as the pilot collection. Add Device1 to the collection.

Does this meet the goal?

- A. Yes
- B. No

Correct Answer: B

Section: [none]

Explanation

Explanation/Reference:

QUESTION 17

Note: This question is part of a series of questions that present the same scenario. Each question in the series contains a unique solution that might meet the stated goals. Some question sets might have more than one correct solution, while others might not have a correct solution.

After you answer a question in this section, you will NOT be able to return to it. As a result, these questions will not appear in the review screen.

Your network contains an Active Directory domain named contoso.com that is synced to Microsoft Azure Active Directory (Azure AD).

You manage Windows 10 devices by using Microsoft System Center Configuration Manager (Current Branch).

You configure a pilot for co-management.

You add a new device named Device1 to the domain. You install the Configuration Manager client on Device1.

You need to ensure that you can manage Device1 by using Microsoft Intune and Configuration Manager.

Solution: You create a device configuration profile from the Intune admin center.

Does this meet the goal?

- A. Yes
- B. No

Correct Answer: B

Section: [none]

Explanation

Explanation/Reference:

QUESTION 18

You have a Microsoft 365 subscription.

You configure a data loss prevention (DLP) policy.

You discover that users are incorrectly marking content as false positive and bypassing the DLP policy.

You need to prevent the users from bypassing the DLP policy.

What should you configure?

- A. actions
- B. exceptions
- C. incident reports
- D. user overrides

Correct Answer: D

Section: [none]

Explanation

Explanation/Reference:

References: <https://docs.microsoft.com/en-us/office365/securitycompliance/data-loss-prevention-policies>

QUESTION 19

In Microsoft 365, you configure a data loss prevention (DLP) policy named Policy1. Policy1 detects the sharing of United States (US) bank account numbers in email messages and attachments.

Policy1 is configured as shown in the exhibit. (Click the **Exhibit** tab.)



Use actions to protect content when the conditions are met.

Restrict access or encrypt the content

☒ Block people from sharing and restrict access to shared content

By default, users are blocked from sending email messages to people. You can choose who has access to shared SharePoint and OneDrive content.

Block these people from accessing SharePoint and OneDrive content

- ☐ Everyone. Only the content owner, the lastmodifier, and the site admin will continue to have access.
- ☒ Only people outside your organization. People inside your organization will continue to have access.

☐ Encrypt email messages (applies only to content to Exchange)

You need to ensure that internal users can email documents that contain US bank account numbers to external users who have an email suffix of contoso.com.

What should you configure?

- A. an action
- B. a group
- C. a condition
- D. an exception

Correct Answer: A

Section: [none]

Explanation

Explanation/Reference:

References: <https://docs.microsoft.com/en-us/office365/securitycompliance/data-loss-prevention-policies#how-dlp-policies-work>

QUESTION 20

Your company uses on-premises Windows Server File Classification Infrastructure (FCI). Some documents on the on-premises file servers are classified as Confidential.

You migrate the files from the on-premises file servers to Microsoft SharePoint Online.

You need to ensure that you can implement data loss prevention (DLP) policies for the uploaded files based on the Confidential classification.

What should you do first?

- A. From the SharePoint admin center, create a managed property.
- B. From the SharePoint admin center, configure hybrid search.
- C. From the Security & Compliance Center PowerShell, run the `New-DlpComplianceRule` cmdlet.
- D. From the Security & Compliance Center PowerShell, run the `New-DataClassification` cmdlet.

Correct Answer: C

Section: [none]

Explanation

Explanation/Reference: References: <https://docs.microsoft.com/en-us/powershell/module/exchange/policy-and-compliance-dlp/new-dataclassification?view=exchange-ps>

QUESTION 21

HOTSPOT

You have a Microsoft Azure Active Directory (Azure AD) tenant named contoso.com.

You have three applications App1, App2, App3. The Apps use files that have the same file extensions.

Your company uses Windows Information Protection (WIP). WIP has the following configurations:

- Windows Information Protection mode: Silent
- Protected apps: App1 ▪

Exempt apps: App2

From App1, you create a file named File1.

What is the effect of the configurations? To answer, select the appropriate options in the answer area.

Hot Area:

Answer Area

You can open File1 from:

	▼
App1 only	
App1 and App2 only	
App1 and App3 only	
App1, App2, and App3	

An action will be logged when you attempt to open File1 from:

	▼
App1 only	
App3 only	
App1 and App2 only	
App2 and App3 only	
App1, App2, and App3	

Correct Answer:

Answer Area

You can open File1 from:

	⌵
App1 only	
App1 and App2 only	
App1 and App3 only	
App1, App2, and App3	

An action will be logged when you attempt to open File1 from:

	⌵
App1 only	
App3 only	
App1 and App2 only	
App2 and App3 only	
App1, App2, and App3	

Section: [none]

Explanation

Explanation/Reference:

Reference: <https://docs.microsoft.com/en-us/windows/security/information-protection/windows-information-protection/create-wip-policy-using-intune>

<https://docs.microsoft.com/en-us/windows/security/information-protection/windows-information-protection/create-wip-policy-using-intune#exempt-apps-from-wiprestrictions>

QUESTION 22

Your company has 10 offices.

The network contains an Active Directory domain named contoso.com. The domain contains 500 client computers. Each office is configured as a separate subnet.

You discover that one of the offices has the following:

- Computers that have several preinstalled applications
- Computers that use nonstandard computer names
- Computers that have Windows 10 preinstalled
- Computers that are in a workgroup

You must configure the computers to meet the following corporate requirements:

- All the computers must be joined to the domain.
 - All the computers must have computer names that use a prefix of CONTOSO.
- All the computers must only have approved corporate applications installed.

You need to recommend a solution to redeploy the computers. The solution must minimize the deployment time.

- A. a provisioning package
- B. wipe and load refresh
- C. Windows Autopilot
- D. an in-place upgrade

Correct Answer: A

Section: [none]

Explanation



Explanation/Reference:

Explanation:

By using a Provisioning, IT administrators can create a self-contained package that contains all of the configuration, settings, and apps that need to be applied to a device.

Incorrect Answers:

C: With Windows Autopilot the user can set up pre-configure devices without the need consult their IT administrator.

D: Use the In-Place Upgrade option when you want to keep all (or at least most) existing applications.

References: <https://docs.microsoft.com/en-us/windows/deployment/windows-10-deployment-scenarios> <https://docs.microsoft.com/en-us/windows/deployment/windows-autopilot/windows-autopilot>

QUESTION 23

You have a Microsoft 365 subscription.

You recently configured a Microsoft SharePoint Online tenant in the subscription.

You plan to create an alert policy.

You need to ensure that an alert is generated only when malware is detected in more than five documents stored in SharePoint Online during a period of 10 minutes.

What should you do first?

- A. Enable Microsoft Office 365 Cloud App Security.
- B. Deploy Windows Defender Advanced Threat Protection (Windows Defender ATP).
- C. Enable Microsoft Office 365 Analytics.

Correct Answer: B

Section: [none]

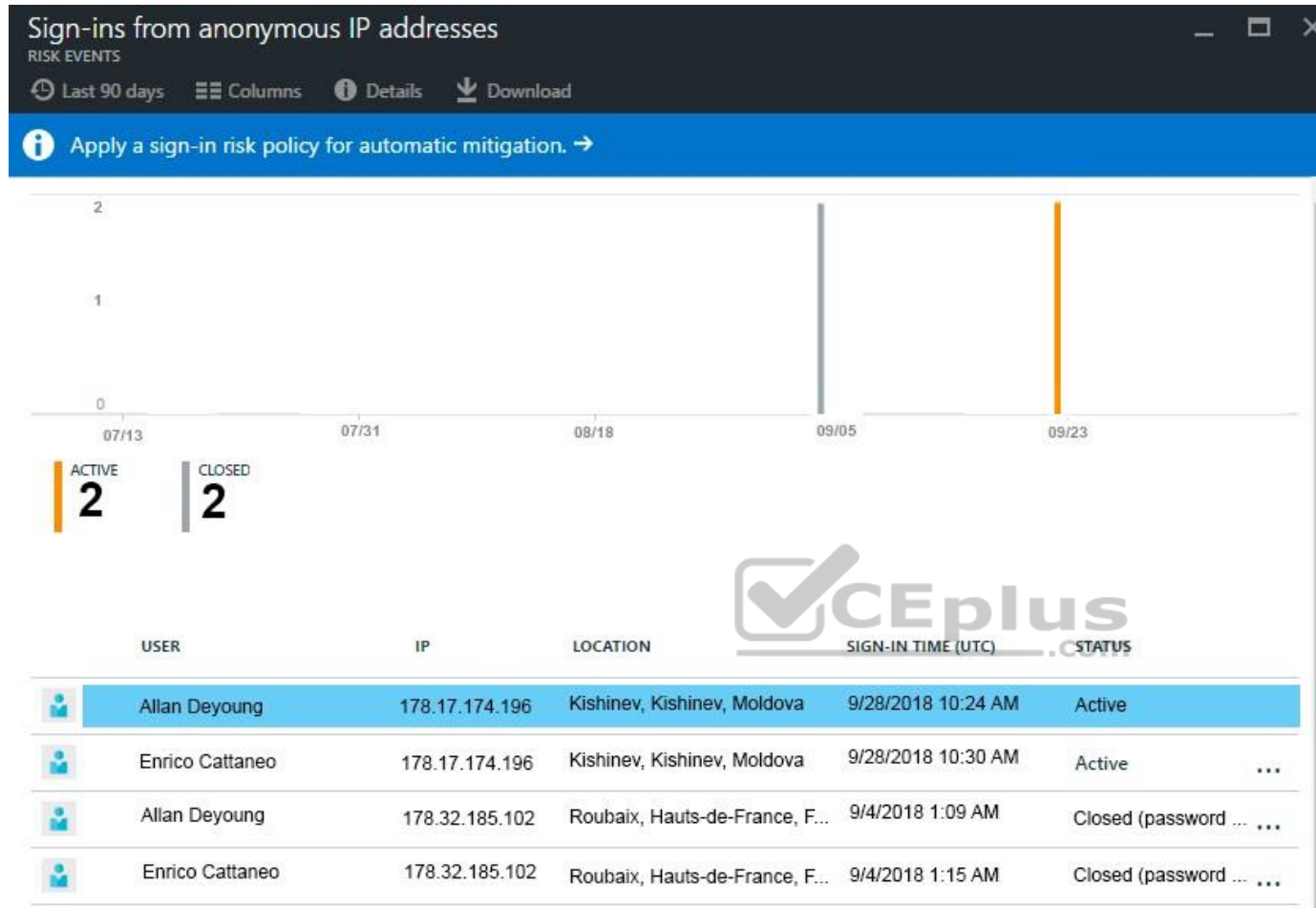
Explanation

Explanation/Reference:

QUESTION 24

From the Microsoft Azure Active Directory (Azure AD) Identity Protection dashboard, you view the risk events shown in the exhibit. (Click the **Exhibit** tab.)





You need to reduce the likelihood that the sign-ins are identified as risky.

What should you do?

- A. From the Security & Compliance admin center, add the users to the Security Readers role group.
- B. From the Conditional access blade in the Azure Active Directory admin center, create named locations.
- C. From the Azure Active Directory admin center, configure the trusted IPs for multi-factor authentication.
- D. From the Security & Compliance admin center, create a classification label.

Correct Answer: B

Section: [none]

Explanation

Explanation/Reference:

References: <https://docs.microsoft.com/en-us/azure/active-directory/conditional-access/location-condition>

QUESTION 25

You have a Microsoft 365 tenant.

You have a line-of-business application named App1 that users access by using the My Apps portal.

After some recent security breaches, you implement a conditional access policy for App1 that uses Conditional Access App Control.

You need to be alerted by email if impossible travel is detected for a user of App1. The solution must ensure that alerts are generated for App1 only.

What should you do?

- A. From Microsoft Cloud App Security, modify the impossible travel alert policy.
- B. From Microsoft Cloud App Security, create a Cloud Discovery anomaly detection policy.
- C. From the Azure Active Directory admin center, modify the conditional access policy.
- D. From Microsoft Cloud App Security, create an app discovery policy.

Correct Answer: B

Section: [none]

Explanation

Explanation/Reference:

References: <https://docs.microsoft.com/en-us/cloud-app-security/cloud-discovery-anomaly-detection-policy>

QUESTION 26

Your network contains an on-premises Active Directory domain.

Your company has a security policy that prevents additional software from being installed on domain controllers.

You need to monitor a domain controller by using Microsoft Azure Advanced Threat Protection (ATP).



<https://vceplus.com/>

What should you do? More than once choice may achieve the goal. Select the **BEST** answer.

- A. Deploy an Azure ATP standalone sensor, and then configure port mirroring.
- B. Deploy an Azure ATP standalone sensor, and then configure detections.
- C. Deploy an Azure ATP sensor, and then configure detections.
- D. Deploy an Azure ATP sensor, and then configure port mirroring.

Correct Answer: D

Section: [none]

Explanation



Explanation/Reference:

References: <https://docs.microsoft.com/en-us/azure-advanced-threat-protection/install-atp-step5>

QUESTION 27

You implement Microsoft Azure Advanced Threat Protection (Azure ATP).



You have an Azure ATP sensor configured as shown in the following exhibit.

Updates

Updates

Domain controller restart
during updates



NAME	TYPE	VERSION	AUTOM...	DELAYE...	STATUS
LON-DC1	Sensor	2.48.5521	 on	 on	Up to date

Save

How long after the Azure ATP cloud service is updated will the sensor update?

- A. 1 hour
- B. 7 days
- C. 48 hours
- D. 12 hours
- E. 24 hours

Correct Answer: E

Section: [none]

Explanation

Explanation/Reference:

References: <https://docs.microsoft.com/en-us/azure-advanced-threat-protection/atp-whats-new>

QUESTION 28

Your company has a Microsoft 365 E3 subscription.

All devices run Windows 10 Pro and are joined to Microsoft Azure Active Directory (Azure AD).

You need to change the edition of Windows 10 to Enterprise the next time users sign in to their computer. The solution must minimize downtime for the users.

What should you use?

- A. Subscription Activation
- B. Windows Update
- C. Windows Autopilot
- D. an in-place upgrade

Correct Answer: C

Section: [none]

Explanation

Explanation/Reference:

References:

<https://docs.microsoft.com/en-us/windows/deployment/windows-autopilot/windows-autopilot>

Testlet 2

This is a case study. **Case studies are not timed separately. You can use as much exam time as you would like to complete each case.** However, there may be additional case studies and sections on this exam. You must manage your time to ensure that you are able to complete all questions included on this exam in the time provided.

To answer the questions included in a case study, you will need to reference information that is provided in the case study. Case studies might contain exhibits and other resources that provide more information about the scenario that is described in the case study. Each question is independent of the other questions in this case study.

At the end of this case study, a review screen will appear. This screen allows you to review your answer and to make changes before you move to the next section of the exam. After you begin a new section, you cannot return to this section.

To start the case study

To display the first question in this case study, click the **Next** button. Use the buttons in the left pane to explore the content of the case study before you answer the questions. Clicking these buttons displays information such as business requirements, existing environment, and problem statements. When you are ready to answer a question, click the **Question** button to return to the question.

Overview

Contoso, Ltd. is a consulting company that has a main office in Montreal and two branch offices in Seattle and New York.

The offices have the users and devices shown in the following table.

Office	Users	Laptops	Desktops	Mobile devices
Montreal	2,500	2,800	300	3,100
Seattle	1,000	1,100	200	1,500
New York	300	320	30	400

Contoso recently purchased a Microsoft 365 E5 subscription.

Existing Environment

The network contains an Active directory forest named contoso.com and a Microsoft Azure Active Directory (Azure AD) tenant named contoso.onmicrosoft.com.

You recently configured the forest to sync to the Azure AD tenant.

You add and then verify adatum.com as an additional domain name.

All servers run Windows Server 2016.

All desktop computers and laptops run Windows 10 Enterprise and are joined to contoso.com.

All the mobile devices in the Montreal and Seattle offices run Android. All the mobile devices in the New York office run iOS.

Contoso has the users shown in the following table.

Name	Role
User1	<i>None</i>
User2	<i>None</i>
User3	Customer Lockbox access approver
User4	<i>None</i>

Contoso has the groups shown in the following table.

Name	Type	Membership rule
Group1	Assigned	<i>Not applicable</i>
Group 2	Dynamic	(user.department=eq "Finance")

Microsoft Office 365 licenses are assigned only to Group2.

The network also contains external users from a vendor company who have Microsoft accounts that use a suffix of @outlook.com.

Requirements

Planned Changes

Contoso plans to provide email addresses for all the users in the following domains:

- East.adatum.com
- Contoso.adatum.com
- Humongousinsurance.com

Technical Requirements

Contoso identifies the following technical requirements:

- All new users must be assigned Office 365 licenses automatically.
- The principle of least privilege must be used whenever possible.

Security Requirements

Contoso identifies the following security requirements:

- Vendors must be able to authenticate by using their Microsoft account when accessing Contoso resources.
 - User2 must be able to view reports and schedule the email delivery of security and compliance reports.
 - The members of Group1 must be required to answer a security question before changing their password.
 - User3 must be able to manage Office 365 connectors. ▪
- User4 must be able to reset User3 password.

QUESTION 1

You need to add the custom domain names to Office 365 to support the planned changes as quickly as possible.

What should you create to verify the domain names successfully?

- A. three alias (CNAME) records
- B. one text (TXT) record
- C. one alias (CNAME) record
- D. three text (TXT) records



Correct Answer: D

Section: [none]

Explanation

Explanation/Reference:

Question Set 1

QUESTION 1

Your company has a Microsoft 365 subscription.

Your plan to add 100 newly hired temporary users to the subscription next week.

You create the user accounts for the new users.

You need to assign licenses to the new users.

Which command should you run?

```
$NewStaff = Get-AzureADUser -All -Department "Temp" -UsageLocation "";  
$NewStaff | foreach {Set-AzureADUser -LicenseOptions "contoso:ENTERPRISEPACK"}  
  
$NewStaff = Get-AzureADUser -All -Department "Temp" -UsageLocation "US" -UnlicensedUsersOnly;  
$NewStaff | foreach {Set-AzureADUserLicense -AddLicenses "contoso:ENTERPRISEPACK"}  
  
$NewStaff = Get-AzureADUser -All -Department "Temp" -UsageLocation "";  
$NewStaff | foreach {Set-AzureADUserLicense -LicenseOptions "contoso:ENTERPRISEPACK"}  
  
$NewStaff = Get-AzureADUser -All -Department "Temp" -UsageLocation "US" -UnlicensedUsersOnly;  
$NewStaff | foreach {Set-AzureADUser -AddLicenses "contoso:ENTERPRISEPACK"}
```

A.

B.

C.

D.

Correct Answer: B

Section: [none]

Explanation

Explanation/Reference:

QUESTION 2

Your network contains an Active Directory domain and a Microsoft Azure Active Directory (Azure AD) tenant.

The network uses a firewall that contains a list of allowed outbound domains.

You begin to implement directory synchronization.

You discover that the firewall configuration contains only the following domain names in the list of allowed domains:

- *.microsoft.com
- *.office.com

Directory synchronization fails.

You need to ensure that directory synchronization completes successfully.

What is the best approach to achieve the goal? More than one answer choice may achieve the goal. Select the **BEST** answer.

- A. From the firewall, allow the IP address range of the Azure data center for outbound communication.
- B. From Azure AD Connect, modify the Customize synchronization options task.
- C. Deploy an Azure AD Connect sync server in staging mode.
- D. From the firewall, create a list of allowed inbound domains.
- E. From the firewall, modify the list of allowed outbound domains.

Correct Answer: E

Section: [none]

Explanation

Explanation/Reference:

QUESTION 3

Your network contains an on-premises Active Directory forest.

You are evaluating the implementation of Microsoft 365 and the deployment of an authentication strategy.

You need to recommend an authentication strategy that meets the following requirements:

- Allows users to sign in by using smart card-based certificates
- Allows users to connect to on-premises and Microsoft 365 services by using SSO Which

authentication strategy should you recommend?

- A. password hash synchronization and seamless SSO
- B. federation with Active Directory Federation Services (AD FS)
- C. pass-through authentication and seamless SSO

Correct Answer: B

Section: [none]

Explanation

Explanation/Reference:

References: <https://docs.microsoft.com/en-us/azure/security/azure-ad-choose-authn>

QUESTION 4

Your network contains an Active Directory domain named adatum.com that is synced to Microsoft Azure Active Directory (Azure AD).

The domain contains 100 user accounts.

The city attribute for all the users is set to the city where the user resides.

You need to modify the value of the city attribute to the three-letter airport code of each city.

What should you do?

- A. From Active Directory Administrative Center, select the Active Directory users, and then modify the Properties settings.
- B. From the Microsoft 365 admin center, select the users, and then use the Bulk actions option.
- C. From Azure Cloud Shell, run the `Get-AzureADUser` and `Set-AzureADUser` cmdlets.
- D. From Windows PowerShell on a domain controller, run the `Get-AzureADUser` and `Set-AzureADUser` cmdlets.

Correct Answer: A

Section: [none]

Explanation

Explanation/Reference:

QUESTION 5

You have a Microsoft 365 subscription that contains a Microsoft Azure Active Directory (Azure AD) tenant named contoso.com. The tenant includes a user named User1.

You enable Azure AD Identity Protection.

You need to ensure that User1 can review the list in Azure AD Identity Protection of users flagged for risk. The solution must use the principle of least privilege.

To which role should you add User1?

- A. Security reader
- B. Compliance administrator
- C. Reports reader
- D. Global administrator

Correct Answer: A

Section: [none]

Explanation

Explanation/Reference:

QUESTION 6

Your network contains three Active Directory forests.

You create a Microsoft Azure Active Directory (Azure AD) tenant.

You plan to sync the on-premises Active Directory to Azure AD.

You need to recommend a synchronization solution. The solution must ensure that the synchronization can complete successfully and as quickly as possible if a single server fails.

What should you include in the recommendation?

- A. three Azure AD Connect sync servers and three Azure AD Connect sync servers in staging mode
- B. one Azure AD Connect sync server and one Azure AD Connect sync server in staging mode
- C. three Azure AD Connect sync servers and one Azure AD Connect sync server in staging mode
- D. six Azure AD Connect sync servers and three Azure AD Connect sync servers in staging mode

Correct Answer: B

Section: [none]

Explanation

Explanation/Reference:

QUESTION 7

Your company has 10,000 users who access all applications from an on-premises data center.

You plan to create a Microsoft 365 subscription and to migrate data to the cloud.

You plan to implement directory synchronization.

User accounts and group accounts must sync to Microsoft Azure Active Directory (Azure AD) successfully.

You discover that several user accounts fail to sync to Azure AD.

You need to identify which user accounts failed to sync. You must resolve the issue as quickly as possible.

What should you do?

- A. From Active Directory Administrative Center, search for all the users, and then modify the properties of the user accounts.
- B. Run `idfix.exe`, and then click **Complete**.
- C. From Windows PowerShell, run the `Start-AdSyncCycle -PolicyType Delta` command.
- D. Run `idfix.exe`, and then click **Edit**.

Correct Answer: D

Section: [none]

Explanation

Explanation/Reference:

QUESTION 8

Your network contains an Active Directory forest. The forest contains two domains named contoso.com and adatum.com.

Your company recently purchased a Microsoft 365 subscription.

You deploy a federated identity solution to the environment.

You use the following command to configure contoso.com for federation.

```
Convert-MsolDomaintoFederated -DomainName contoso.com
```

In the Microsoft 365 tenant, an administrator adds and verifies the adatum.com domain name.

You need to configure the adatum.com Active Directory domain for federated authentication.

Which two actions should you perform before you run the Azure AD Connect wizard? Each correct answer presents part of the solution.

NOTE: Each correct selection is worth one point.

- A. From Windows PowerShell, run the `Convert-MsolDomaintoFederated -DomainName contoso.com -SupportMultipleDomain` command.
- B. From Windows PowerShell, run the `New-MsolFederatedDomain -SupportMultipleDomain -DomainName contoso.com` command.
- C. From Windows PowerShell, run the `New-MsolFederatedDomain -DomainName adatum.com` command.
- D. From Windows PowerShell, run the `Update-MSOLFederatedDomain -DomainName contoso.com -SupportMultipleDomain` command.
- E. From the federation server, remove the Microsoft Office 365 relying party trust.

Correct Answer: AE

Section: [none]


Explanation

Explanation/Reference:

QUESTION 9

HOTSPOT

Your network contains an on-premises Active Directory domain that is synced to Microsoft Azure Active Directory (Azure AD) as shown in the following two exhibits.


Microsoft Azure Active Directory Connect

Tasks
Connect to Azure AD
Sync
Connect Directories
Domain/OU Filtering
Optional Features
Azure AD Apps
Azure AD Attributes
Directory Extensions
Configure

Azure AD attributes

These attributes will be exported to Azure AD based on the previously selected application. Remove an individual attribute only if required to meet string organizational security policy.

EXPORTED ATTRIBUTES

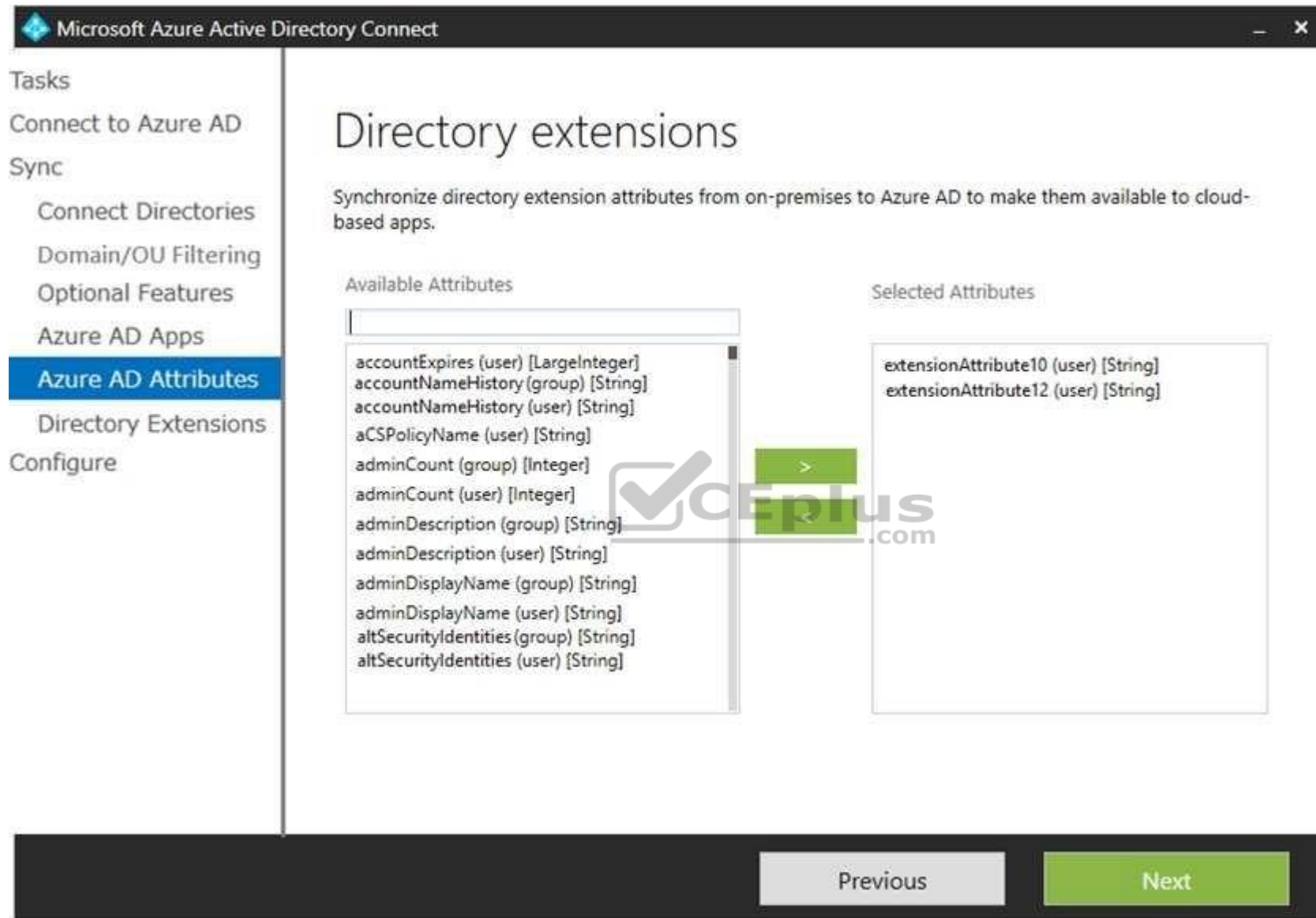
- ☒ domainNetBios
- ☒ employeeID
- ☒ extensionAttribute1
- ☐ extensionAttribute10
- ☐ extensionAttribute11
- ☒ extensionAttribute12
- ☒ extensionAttribute13
- ☒ extensionAttribute14
- ☒ extensionAttribute15
- ☒ extensionAttribute2
- ☒ extensionAttribute3
- ☒ extensionAttribute4

☒ I want to further limit the attributes exported to Azure AD. ?

☐ View the list of attribute as comma-separated values

Previous

Next



You create a user named User1 in Active Directory as shown in the following exhibit.

user1 Properties ? X

Published Certificates	Member Of	Password Replication	Dial-in	Object
Security	Environment	Sessions	Remote control	
General	Address	Account	Profile	Telephones
Remote Desktop Services Profile	COM+	Attribute Editor		

Attributes:

Attribute	Value
employeeType	<not set>
enabledProtocols	<not set>
expirationTime	<not set>
extensionAttribute1	Value1
extensionAttribute10	Value10
extensionAttribute11	Value11
extensionAttribute12	Value12
extensionAttribute13	<not set>
extensionAttribute14	<not set>
extensionAttribute15	<not set>
extensionAttribute2	<not set>
extensionAttribute3	<not set>
extensionAttribute4	<not set>
extensionAttribute5	<not set>

< III >

Edit Filter

OK Cancel Apply Help

For each of the following statements, select Yes if the statement is true. Otherwise, select No.

NOTE: Each correct selection is worth one point.

Hot Area:

Answer Area	Statements	Yes	No
	The value of extensionAttribute1 is synchronized to Azure AD.	<input type="radio"/>	<input type="radio"/>
	The value of extensionAttribute10 is synchronized to Azure AD.	<input type="radio"/>	<input type="radio"/>
	The value of extensionAttribute11 is synchronized to Azure AD.	<input type="radio"/>	<input type="radio"/>
	The value of extensionAttribute12 is synchronized to Azure AD.	<input type="radio"/>	<input type="radio"/>

Correct Answer:

Answer Area	Statements	Yes	No
	The value of extensionAttribute1 is synchronized to Azure AD.	<input checked="" type="radio"/>	<input type="radio"/>
	The value of extensionAttribute10 is synchronized to Azure AD.	<input checked="" type="radio"/>	<input type="radio"/>
	The value of extensionAttribute11 is synchronized to Azure AD.	<input type="radio"/>	<input checked="" type="radio"/>
	The value of extensionAttribute12 is synchronized to Azure AD.	<input checked="" type="radio"/>	<input type="radio"/>

Section: [none]

Explanation

Explanation/Reference:

Explanation:

QUESTION 10

Your network contains a single Active Directory domain and two Microsoft Azure Active Directory (Azure AD) tenants.

You plan to implement directory synchronization for both Azure AD tenants. Each tenant will contain some of the Active Directory users.

You need to recommend a solution for the planned directory synchronization.

What should you include in the recommendation?

- A. Deploy two servers that run Azure AD Connect, and then filter the users for each tenant by using organizational unit (OU)-based filtering.
- B. Deploy one server that runs Azure AD Connect, and then specify two sync groups.
- C. Deploy one server that runs Azure AD Connect, and then filter the users for each tenant by using organizational unit (OU)-based filtering.
- D. Deploy one server that runs Azure AD Connect, and then filter the users for each tenant by using domain-based filtering.

Correct Answer: A

Section: [none]

Explanation

Explanation/Reference:

References: <https://docs.microsoft.com/en-us/azure/active-directory/hybrid/plan-connect-topologies#multiple-azure-ad-tenants>

QUESTION 11

Your company has a Microsoft Azure Active Directory (Azure AD) tenant named contoso.onmicrosoft.com that contains a user named User1.

You suspect that an imposter is signing in to Azure AD by using the credentials of User1.

You need to ensure that an administrator named Admin1 can view all the sign in details of User1 from the past 24 hours.

To which three roles should you add Admin1? Each correct answer presents a complete solution.

NOTE: Each correct selection is worth one point.

- A. Security administrator
- B. Password administrator
- C. User administrator
- D. Compliance administrator
- E. Reports reader
- F. Security reader

Correct Answer: ABC

Section: [none]

Explanation

Explanation/Reference:

QUESTION 12

You have a Microsoft 365 subscription.

You plan to enable Microsoft Azure Information Protection.

You need to ensure that only the members of a group named PilotUsers can protect content.

What should you do?

- A. Run the `Add-AadrmRoleBaseAdministrator` cmdlet.
- B. Create an Azure Information Protection policy.
- C. Configure the protection activation status for Azure Information Protection.
- D. Run the `Set-AadrmOnboardingControlPolicy` cmdlet.

Correct Answer: D

Section: [none]

Explanation



Explanation/Reference:

Explanation:

If you don't want all users to be able to protect documents and emails immediately by using Azure Rights Management, you can configure user onboarding controls by using the `Set-AadrmOnboardingControlPolicy`

References: <https://docs.microsoft.com/en-us/azure/information-protection/activate-service>

QUESTION 13

Your company has a Microsoft 365 subscription.

You need to identify which users performed the following privileged administration tasks:

- Deleted a folder from the second-stage Recycle Bin if Microsoft SharePoint
- Opened a mailbox of which the user was not the owner ▪

Reset a user password

What should you use?

- A. Microsoft Azure Active Directory (Azure AD) audit logs
- B. Microsoft Azure Active Directory (Azure AD) sign-ins
- C. Security & Compliance content search
- D. Security & Compliance audit log search

Correct Answer: A

Section: [none]

Explanation

Explanation/Reference:

References: <https://docs.microsoft.com/en-us/azure/azure-monitor/platform/activity-logs-overview>

QUESTION 14

You have a Microsoft 365 subscription. You have a user named User1.

You need to ensure that User1 can place a hold on all mailbox content.

What permission should you assign to User1?

- A. the User management administrator role from the Microsoft 365 admin center
- B. the eDiscovery Manager role from the Security & Compliance admin center
- C. the Information Protection administrator role from the Azure Active Directory admin center
- D. the Compliance Management role from the Exchange admin center

Correct Answer: B

Section: [none]

Explanation

Explanation/Reference: References: <https://docs.microsoft.com/en-us/Exchange/permissions/feature-permissions/policy-and-compliance-permissions?view=exchserver-2019>

QUESTION 15

Your company has a Microsoft Azure Active Directory (Azure AD) tenant named contoso.com.

You sign up for Microsoft Store for Business.

The tenant contains the users shown in the following table.

Name	Microsoft Store for Business role	Azure AD role
User1	Purchaser	None
User2	Basic Purchaser	None
User3	None	Application administrator
User4	None	Cloud application administrator
User5	None	None

Microsoft Store for Business has the following Shopping behavior settings:

- Allow users to shop is set to **On**.
- Make everyone a Basic Purchaser is set to **Off**.

You need to identify which users can install apps from the Microsoft for Business private store.

Which users should you identify?

- A. A. user1, User2, User3, User4, and User5
- B. User1 only
- C. User1 and User2 only
- D. User3 and User4 only
- E. User1, User2, User3, and User4 only

Correct Answer: C

Section: [none]

Explanation

Explanation/Reference:

Explanation:

Allow users to shop controls the shopping experience in Microsoft Store for Education. When this setting is on, Purchasers and Basic Purchasers can purchase products and services from Microsoft Store for Education.

References: <https://docs.microsoft.com/en-us/microsoft-store/acquire-apps-microsoft-store-for-business>

QUESTION 16

You have a Microsoft 365 subscription that contains a Microsoft Azure Active Directory (Azure AD) tenant named contoso.com.

In the tenant, you create a user named User1.

You need to ensure that User1 can publish retention labels from the Security & Compliance admin center. The solution must use the principle of least privilege.

To which role group should you add User1?

- A. Security Administrator
- B. Records Management
- C. Compliance Administrator
- D. eDiscovery Manager

Correct Answer: B

Section: [none]

Explanation

Explanation/Reference:

References: <https://docs.microsoft.com/en-us/office365/securitycompliance/file-plan-manager>

QUESTION 17

Your company has a Microsoft 365 E5 subscription.

Users in the research department work with sensitive data.

You need to prevent the research department users from accessing potentially unsafe websites by using hyperlinks embedded in email messages and documents. Users in other departments must not be restricted.

What should you do from the Security & Compliance admin center?

- A. Create a data loss prevention (DLP) policy that has a Content contains condition.
- B. Create a data loss prevention (DLP) policy that has a Content is shared condition.
- C. Modify the default safe links policy.
- D. Create a new safe links policy.

Correct Answer: D

Section: [none]

Explanation

Explanation/Reference:

References:

<https://docs.microsoft.com/en-us/office365/securitycompliance/set-up-atp-safe-links-policies#policies-that-apply-to-specific-email-recipients>

QUESTION 18

A user receives the following message when attempting to sign in to <https://myapps.microsoft.com>:

"Your sign-in was blocked. We've detected something unusual about this sign-in. For example, you might be signing in from a new location, device, or app. Before you can continue, we need to verify your identity. Please contact your admin."

Which configuration prevents the users from signing in?

- A. Security & Compliance supervision policies
- B. Security & Compliance data loss prevention (DLP) policies
- C. Microsoft Azure Active Directory (Azure AD) conditional access policies
- D. Microsoft Azure Active Directory (Azure AD) Identity Protection policies

Correct Answer: C

Section: [none]

Explanation

Explanation/Reference:

References: <https://docs.microsoft.com/en-us/azure/active-directory/conditional-access/overview>

QUESTION 19

Note: This question is part of a series of questions that present the same scenario. Each question in the series contains a unique solution that might meet the stated goals. Some question sets might have more than one correct solution, while others might not have a correct solution.

After you answer a question in this section, you will NOT be able to return to it. As a result, these questions will not appear in the review screen.

Your network contains an Active Directory domain.

You deploy a Microsoft Azure Active Directory (Azure AD) tenant.

Another administrator configures the domain to synchronize to Azure AD.

You discover that 10 user accounts in an organizational unit (OU) are NOT synchronized to Azure AD. All the other user accounts synchronized successfully.

You review Azure AD Connect Health and discover that all the user account synchronizations completed successfully.

You need to ensure that the 10 user accounts are synchronized to Azure AD.

Solution: From the Synchronization Rules Editor, you create a new outbound synchronization rule.

Does this meet the goal?

A. Yes

B. No

Correct Answer: A

Section: [none]

Explanation

Explanation/Reference:



QUESTION 20

Note: This question is part of a series of questions that present the same scenario. Each question in the series contains a unique solution that might meet the stated goals. Some question sets might have more than one correct solution, while others might not have a correct solution.

After you answer a question in this section, you will NOT be able to return to it. As a result, these questions will not appear in the review screen.

Your network contains an Active Directory domain.

You deploy a Microsoft Azure Active Directory (Azure AD) tenant.

Another administrator configures the domain to synchronize to Azure AD.

You discover that 10 user accounts in an organizational unit (OU) are NOT synchronized to Azure AD. All the other user accounts synchronized successfully.

You review Azure AD Connect Health and discover that all the user account synchronizations completed successfully.

You need to ensure that the 10 user accounts are synchronized to Azure AD.

Solution: You run `idfix.exe` and report the 10 user accounts.

Does this meet the goal?

- A. Yes
- B. No

Correct Answer: B

Section: [none]

Explanation

Explanation/Reference:

Explanation:

The question states that “all the user account synchronizations completed successfully”. If there were problems with the 10 accounts that needed fixing with idfix.exe, there would have been synchronization errors in Azure AD Connect Health.



Testlet 2

This is a case study. **Case studies are not timed separately. You can use as much exam time as you would like to complete each case.** However, there may be additional case studies and sections on this exam. You must manage your time to ensure that you are able to complete all questions included on this exam in the time provided.

To answer the questions included in a case study, you will need to reference information that is provided in the case study. Case studies might contain exhibits and other resources that provide more information about the scenario that is described in the case study. Each question is independent of the other questions in this case study.

At the end of this case study, a review screen will appear. This screen allows you to review your answer and to make changes before you move to the next section of the exam. After you begin a new section, you cannot return to this section.

To start the case study

To display the first question in this case study, click the **Next** button. Use the buttons in the left pane to explore the content of the case study before you answer the questions. Clicking these buttons displays information such as business requirements, existing environment, and problem statements. When you are ready to answer a question, click the **Question** button to return to the question.

Overview

Contoso, Ltd. is a consulting company that has a main office in Montreal and two branch offices in Seattle and New York.

The offices have the users and devices shown in the following table.

Office	Users	Laptops	Desktops	Mobile devices
Montreal	2,500	2,800	300	3,100
Seattle	1,000	1,100	200	1,500
New York	300	320	30	400

Contoso recently purchased a Microsoft 365 E5 subscription.

Existing Environment

The network contains an Active directory forest named contoso.com and a Microsoft Azure Active Directory (Azure AD) tenant named contoso.onmicrosoft.com.

You recently configured the forest to sync to the Azure AD tenant.

You add and then verify adatum.com as an additional domain name.

All servers run Windows Server 2016.

All desktop computers and laptops run Windows 10 Enterprise and are joined to contoso.com.

All the mobile devices in the Montreal and Seattle offices run Android. All the mobile devices in the New York office run iOS.

Contoso has the users shown in the following table.

Name	Role
User1	<i>None</i>
User2	<i>None</i>
User3	Customer Lockbox access approver
User4	<i>None</i>

Contoso has the groups shown in the following table.

Name	Type	Membership rule
Group1	Assigned	<i>Not applicable</i>
Group 2	Dynamic	(user.department –eq “Finance”)

Microsoft Office 365 licenses are assigned only to Group2.

The network also contains external users from a vendor company who have Microsoft accounts that use a suffix of @outlook.com.

Requirements

Planned Changes

Contoso plans to provide email addresses for all the users in the following domains:

- East.adatum.com
- Contoso.adatum.com
- Humongousinsurance.com

Technical Requirements

Contoso identifies the following technical requirements:

- All new users must be assigned Office 365 licenses automatically.
- The principle of least privilege must be used whenever possible.

Security Requirements

Contoso identifies the following security requirements:

- Vendors must be able to authenticate by using their Microsoft account when accessing Contoso resources.
- User2 must be able to view reports and schedule the email delivery of security and compliance reports.
- The members of Group1 must be required to answer a security question before changing their password.
- User3 must be able to manage Office 365 connectors. ▪ User4 must be able to reset User3 password.

QUESTION 1

Note: This question is part of a series of questions that present the same scenario. Each question in the series contains a unique solution that might meet the stated goals. Some question sets might have more than one correct solution, while others might not have a correct solution.

After you answer a question in this section, you will NOT be able to return to it. As a result, these questions will not appear in the review screen.

You need to assign User2 the required roles to meet the security requirements.

Solution: From the Office 365 admin center, you assign User2 the Security Reader role. From the Exchange admin center, you assign User2 the Help Desk role.

Does this meet the goal?

- A. Yes
- B. No

Correct Answer: B

Section: [none]

Explanation

Explanation/Reference:

QUESTION 2

Note: This question is part of a series of questions that present the same scenario. Each question in the series contains a unique solution that might meet the stated goals. Some question sets might have more than one correct solution, while others might not have a correct solution.

After you answer a question in this section, you will NOT be able to return to it. As a result, these questions will not appear in the review screen.

You need to assign User2 the required roles to meet the security requirements.

Solution: From the Office 365 admin center, you assign User2 the Records Management role. From the Exchange admin center, you assign User2 the Help Desk role.

Does this meet the goal?

- A. Yes
- B. No

Correct Answer: B

Section: [none]

Explanation

Explanation/Reference:

QUESTION 3

To which Azure AD role should you add User4 to meet the security requirement?

- A. Password administrator
- B. Global administrator
- C. Security administrator
- D. Privileged role administrator

Correct Answer: B

Section: [none]

Explanation

Explanation/Reference:

Question Set 1

QUESTION 1

Your company has three main offices and one branch office. The branch office is used for research.

The company plans to implement a Microsoft 365 tenant and to deploy multi-factor authentication.

You need to recommend a Microsoft 365 solution to ensure that multi-factor authentication is enforced only for users in the branch office.

What should you include in the recommendation?

- A. Microsoft Azure Active Directory (Azure AD) conditional access.
- B. Microsoft Azure Active Directory (Azure AD) password protection.
- C. a Microsoft 365 Device Management device compliance policy.
- D. a Microsoft 365 Device Management device configuration profile.

Correct Answer: A

Section: [none]

Explanation

Explanation/Reference:

QUESTION 2

Your network contains an Active Directory domain named contoso.com.

All users authenticate by using a third-party authentication solution.

You purchase Microsoft 365 and plan to implement several Microsoft 365 services.

You need to recommend an identity strategy that meets the following requirements:

- Provides seamless SSO
- Minimizes the number of additional servers required to support the solution
- Stores the passwords of all the users in Microsoft Azure Active Directory (Azure AD)
- Ensures that all the users authenticate to Microsoft 365 by using their on-premises user account

You are evaluating the implementation of federation.

Which two requirements are met by using federation? Each correct answer presents a complete solution.

NOTE: Each correct selection is worth one point.

- A. minimizes the number of additional servers required to support the solution
- B. provides seamless SSO
- C. stores the passwords of all the users in Azure AD
- D. ensures that all the users authenticate to Microsoft 365 by using their on-premises user account.

Correct Answer: BD

Section: [none]

Explanation

Explanation/Reference:

QUESTION 3

Your network contains an Active Directory domain named contoso.com. The domain contains five domain controllers.

You purchase Microsoft 365 and plan to implement several Microsoft 365 services.

You need to identify an authentication strategy for the planned Microsoft 365 deployment. The solution must meet the following requirements:

- Ensure that users can access Microsoft 365 by using their on-premises credentials.
- Use the existing server infrastructure only.
- Store all user passwords on-premises only. ▪

Be highly available.

Which authentication strategy should you identify?

- A. pass-through authentication and seamless SSO
- B. pass-through authentication and seamless SSO with password hash synchronization
- C. password hash synchronization and seamless SSO
- D. federation

Correct Answer: A

Section: [none]

Explanation

Explanation/Reference:

QUESTION 4

Your network contains an on-premises Active Directory domain.

You have a Microsoft 365 subscription.

You implement a directory synchronization solution that uses pass-through authentication.

You configure Microsoft Azure Active Directory (Azure AD) smart lockout as shown in the following exhibit.

 Save
  Discard

Custom smart lockout

Lockout threshold ⓘ

Lockout duration in seconds ⓘ

Custom banned passwords

Enforce custom list ⓘ ☒ Yes ☐ No

Custom banned password list ⓘ

password

Pa\$\$w0rd

Pa55w0rd

Contoso

Password protection for Windows Server Active Directory

Enable password protection on Windows Server Active Directory ⓘ ☒ Yes ☐ No

Mode ⓘ ☐ Enforced ☒ Audit

You discover that Active Directory users can use the passwords in the custom banned passwords list.

You need to ensure that banned passwords are effective for all users.

Which three actions should you perform? Each correct answer presents part of the solution.

NOTE: Each correct selection is worth one point.

- A. From a domain controller, install the Azure AD Password Protection Proxy.
- B. From a domain controller, install the Microsoft AAD Application Proxy connector.
- C. From Custom banned passwords, modify the Enforce custom list setting.
- D. From Password protection for Windows Server Active Directory, modify the Mode setting.
- E. From all the domain controllers, install the Azure AD Password Protection DC Agent.
- F. From Active Directory, modify the Default Domain Policy.

Correct Answer: ACE

Section: [none]

Explanation

Explanation/Reference:

References: <https://docs.microsoft.com/en-us/azure/active-directory/authentication/howto-password-ban-bad-on-premises-deploy>

QUESTION 5

You have a Microsoft Azure Active Directory (Azure AD) tenant named contoso.onmicrosoft.com.

An external user has a Microsoft account that uses an email address of user1@outlook.com.

An administrator named Admin1 attempts to create a user account for the external user and receives the error message shown in the following exhibit.



You need to ensure that Admin1 can add the user.

What should you do from the Azure Active Directory admin center?

- A. Add a custom domain name named outlook.com.
- B. Modify the Authentication methods.

- C. Modify the External collaboration settings.
- D. Assign Admin1 the Security administrator role.

Correct Answer: C

Section: [none]

Explanation

Explanation/Reference:

QUESTION 6

Your company has a Microsoft 365 subscription and a Microsoft Azure Active Directory (Azure AD) tenant named contoso.onmicrosoft.com.

An external vendor has a Microsoft account that has a username of user1@outlook.com.

You plan to provide user1@outlook.com with access to several resources in the subscription.

You need to add the external user account to contoso.onmicrosoft.com. The solution must ensure that the external vendor can authenticate by using user1@outlook.com.

What should you do?

- A. From Azure Cloud Shell, run the `New-AzureADUser` cmdlet and specify `-UserPrincipalName user1@outlook.com`.
- B. From the Microsoft 365 admin center, add a contact, and then specify user1@outlook.com as the email address.
- C. From the Azure portal, add a new guest user, and then specify user1@outlook.com as the email address.
- D. From the Azure portal, add a custom domain name, and then create a new Azure AD user and use user1@outlook.com as the username.

Correct Answer: C

Section: [none]

Explanation

Explanation/Reference:

QUESTION 7

You have a Microsoft Office 365 subscription that contains several Microsoft SharePoint Online sites.

You discover that users from your company can invite external users to access files on the SharePoint sites.

You need to ensure that the company users can invite only authenticated guest users to the sites.

What should you do?

- A. From the Microsoft 365 admin center, configure a partner relationship.
- B. From SharePoint Online Management Shell, run the `Set-SPOSite` cmdlet.
- C. From the Azure Active Directory admin center, configure a conditional access policy.
- D. From the SharePoint admin center, configure the sharing settings.

Correct Answer: D

Section: [none]

Explanation

Explanation/Reference:

QUESTION 8

Your company has a hybrid deployment of Microsoft 365.

Users authenticate by using pass-through authentication. Several Microsoft Azure AD Connect Authentication Agents are deployed.

You need to verify whether all the Authentication Agents are used for authentication.

What should you do?

- A. From the Azure portal, use the Troubleshoot option on the Pass-through authentication page.
- B. From Performance Monitor, use the #PTA authentications counter.
- C. From the Azure portal, use the Diagnostics settings on the Monitor blade.
- D. From Performance Monitor, use the Kerberos authentications counter.

Correct Answer: A

Section: [none]

Explanation

Explanation/Reference:

QUESTION 9

HOTSPOT

You have a Microsoft 365 Enterprise E5 subscription.

You add a cloud-based app named App1 to the Microsoft Azure Active Directory (Azure AD) enterprise applications list.

You need to ensure that two-step verification is enforced for all user accounts the next time they connect to App1.

Which three settings should you configure from the policy? To answer, select the appropriate settings in the answer area.

Hot Area:



Home > Enterprise applications > Conditional access > Policies > New > Users and groups

New	Users and groups
<p>Info</p> <p>*Name</p> <p>App1 policy</p> <p>Assignments</p> <p>Users and groups All users</p> <p>Cloud apps 0 cloud apps selected</p> <p>Conditions 0 conditions selected</p> <p>Access controls</p> <p>Grant 0 controls selected</p> <p>Session 0 controls selected</p> <p>Enable policy</p> <p>On Off</p>	<p>Include Exclude</p> <p> <input type="radio"/> None <input checked="" type="radio"/> All users <input type="radio"/> Select users and groups </p> <p> <input type="checkbox"/> All guest users <input type="checkbox"/> Directory sales <input type="checkbox"/> Users and groups </p>

Correct Answer:

Home > Enterprise applications > Conditional access > Policies > New > Users and groups

New	Users and groups
<p>Info</p> <p>*Name</p> <p>App1 policy</p> <p>Assignments</p> <p>Users and groups All users</p> <p>Cloud apps 0 cloud apps selected</p> <p>Conditions 0 conditions selected</p> <p>Access controls</p> <p>Grant 0 controls selected</p> <p>Session 0 controls selected</p> <p>Enable policy</p> <p>On Off</p>	<p>Include Exclude</p> <p> <input type="radio"/> None <input checked="" type="radio"/> All users <input type="radio"/> Select users and groups </p> <p> <input type="checkbox"/> All guest users <input type="checkbox"/> Directory sales <input type="checkbox"/> Users and groups </p>

Section: [none]

Explanation

Explanation/Reference:

References: <https://docs.microsoft.com/en-us/azure/active-directory/conditional-access/best-practices> <https://techcommunity.microsoft.com/t5/Enterprise-Mobility-Security/Conditional-Access-now-in-the-new-Azure-portal/ba-p/250060>

QUESTION 10

Note: This question is part of a series of questions that present the same scenario. Each question in the series contains a unique solution that might meet the stated goals. Some question sets might have more than one correct solution, while others might not have a correct solution.

After you answer a question in this section, you will NOT be able to return to it. As a result, these questions will not appear in the review screen.

You have a Microsoft 365 subscription.

You discover that some external users accessed content on a Microsoft SharePoint site. You modify the SharePoint sharing policy to prevent sharing outside your organization.

You need to be notified if the SharePoint policy is modified in the future.

Solution: From the SharePoint site, you create an alert.

Does this meet the goal?

- A. Yes
- B. No

Correct Answer: B

Section: [none]

Explanation

Explanation/Reference:

QUESTION 11

Note: This question is part of a series of questions that present the same scenario. Each question in the series contains a unique solution that might meet the stated goals. Some question sets might have more than one correct solution, while others might not have a correct solution.

After you answer a question in this section, you will NOT be able to return to it. As a result, these questions will not appear in the review screen.

You have a Microsoft 365 subscription.

You discover that some external users accessed content on a Microsoft SharePoint site. You modify the SharePoint sharing policy to prevent sharing outside your organization.

You need to be notified if the SharePoint policy is modified in the future.

Solution: From the SharePoint admin center, you modify the sharing settings.

Does this meet the goal?

- A. Yes
- B. No

Correct Answer: B

Section: [none]

Explanation

Explanation/Reference:

QUESTION 12

Note: This question is part of a series of questions that present the same scenario. Each question in the series contains a unique solution that might meet the stated goals. Some question sets might have more than one correct solution, while others might not have a correct solution.

After you answer a question in this section, you will NOT be able to return to it. As a result, these questions will not appear in the review screen.

You have a Microsoft 365 subscription.

You discover that some external users accessed content on a Microsoft SharePoint site. You modify the SharePoint sharing policy to prevent sharing outside your organization.

You need to be notified if the SharePoint policy is modified in the future.

Solution: From the Security & Compliance admin center, you create a threat management policy.

Does this meet the goal?

- A. Yes
- B. No

Correct Answer: A

Section: [none]

Explanation

Explanation/Reference:

QUESTION 13

Note: This question is part of a series of questions that present the same scenario. Each question in the series contains a unique solution that might meet the stated goals. Some question sets might have more than one correct solution, while others might not have a correct solution.

After you answer a question in this section, you will NOT be able to return to it. As a result, these questions will not appear in the review screen.

You have a Microsoft 365 subscription.

You need to prevent users from accessing your Microsoft SharePoint Online sites unless the users are connected to your on-premises network.

Solution: From the Device Management admin center, you a trusted location and compliance policy.

Does this meet the goal?

A. Yes

B. No



Correct Answer: B

Section: [none]

Explanation

Explanation/Reference:

Explanation:

Conditional Access in SharePoint Online can be configured to use an IP Address white list to allow access.

References: <https://techcommunity.microsoft.com/t5/Microsoft-SharePoint-Blog/Conditional-Access-in-SharePoint-Online-and-OneDrive-for/ba-p/46678>

QUESTION 14

Note: This question is part of a series of questions that present the same scenario. Each question in the series contains a unique solution that might meet the stated goals. Some question sets might have more than one correct solution, while others might not have a correct solution.

After you answer a question in this section, you will NOT be able to return to it. As a result, these questions will not appear in the review screen.

You have a Microsoft 365 subscription.

You need to prevent users from accessing your Microsoft SharePoint Online sites unless the users are connected to your on-premises network.

Solution: From the Microsoft 365 admin center, you configure the Organization profile settings.

Does this meet the goal?

- A. Yes
- B. No

Correct Answer: B

Section: [none]

Explanation

Explanation/Reference:

Explanation:

Conditional Access in SharePoint Online can be configured to use an IP Address white list to allow access.

References: <https://techcommunity.microsoft.com/t5/Microsoft-SharePoint-Blog/Conditional-Access-in-SharePoint-Online-and-OneDrive-for/ba-p/46678>

QUESTION 15

Note: This question is part of a series of questions that present the same scenario. Each question in the series contains a unique solution that might meet the stated goals. Some question sets might have more than one correct solution, while others might not have a correct solution.

After you answer a question in this section, you will NOT be able to return to it. As a result, these questions will not appear in the review screen.

You have a Microsoft 365 subscription.

You need to prevent users from accessing your Microsoft SharePoint Online sites unless the users are connected to your on-premises network.

Solution: From the Azure Active Directory admin center, you create a trusted location and a conditional access policy.

Does this meet the goal?

- A. Yes
- B. No

Correct Answer: A

Section: [none]

Explanation

Explanation/Reference:

Explanation:

Conditional Access in SharePoint Online can be configured to use an IP Address white list to allow access.

References: <https://docs.microsoft.com/en-us/azure/active-directory/conditional-access/location-condition>
<https://techcommunity.microsoft.com/t5/Microsoft-SharePoint-Blog/Conditional-Access-in-SharePoint-Online-and-OneDrive-for/ba-p/46678>

QUESTION 16

You have a Microsoft 365 subscription and a Microsoft Azure Active Directory (Azure AD) tenant named contoso.com. Contoso.com contains the users shown in the following table.

Name	Type	Role
User1	Member	<i>None</i>
User2	Member	Security administrator, Guest inviter
User3	Member	User administrator
User4	Guest	<i>None</i>

Contoso.com is configured as shown in the following exhibit.

External collaboration settings

 Save  Discard

Guest users permissions are limited ⓘ

Yes

No

Admins and users in the guest inviter role can invite ⓘ

Yes

No

Members can invite ⓘ

Yes

No

Guests can invite ⓘ

Yes

No



Collaboration restrictions

- ☒ Allow invitations to be sent to any domain (most inclusive)
- ☐ Deny invitations to the specified domains
- ☐ Allow invitations only to the specified domains (most restrictive)

You need to ensure that guest users can be created in the tenant.

Which setting should you modify?

- A. Guests can invite.
- B. Guests users permissions are limited.
- C. Members can invite.
- D. Admins and users in the guest inviter role can invite.
- E. Deny invitations to the specified domains.

Correct Answer: D

Section: [none]

Explanation

Explanation/Reference:

References: <https://docs.microsoft.com/en-us/azure/active-directory/b2b/delegate-invitations>

<https://docs.microsoft.com/en-us/azure/active-directory/fundamentals/users-default-permissions>

QUESTION 17

Your company recently purchased a Microsoft 365 subscription.

You enable Microsoft Azure Multi-Factor Authentication (MFA) for all 500 users in the Azure Active Directory (Azure AD) tenant.

You need to generate a report that lists all the users who completed the Azure MFA registration process.

What is the best approach to achieve the goal? More than one answer choice may achieve the goal. Select the **BEST** answer.

- A. From Azure Cloud Shell, run the `Get-AzureADUser` cmdlet.
- B. From Azure Cloud Shell, run the `Get-MsolUser` cmdlet.
- C. From the Azure Active Directory admin center, use the Multi-Factor Authentication – Server Status blade.
- D. From the Azure Active Directory admin center, use Risky sign-ins blade.

Correct Answer: B

Section: [none]

Explanation

Explanation/Reference:

References: <https://docs.microsoft.com/en-us/azure/active-directory/authentication/howto-mfa-reporting>

QUESTION 18

You have a Microsoft 365 Enterprise subscription.

You have a conditional access policy to force multi-factor authentication when accessing Microsoft SharePoint from a mobile device.

You need to view which users authenticated by using multi-factor authentication.

What should you do?

- A. From the Microsoft 365 admin center, view the Security & Compliance reports.
- B. From the Azure Active Directory admin center, view the user sign-ins.
- C. From the Microsoft 365 admin center, view the Usage reports.
- D. From the Azure Active Directory admin center, view the audit logs.

Correct Answer: B

Section: [none]

Explanation

Explanation/Reference:

References: <https://docs.microsoft.com/en-us/azure/active-directory/authentication/howto-mfa-reporting>

QUESTION 19

Your network contains an on-premises Active Directory domain named contoso.local. The domain contains five domain controllers.

Your company purchases Microsoft 365 and creates a Microsoft Azure Active Directory (Azure AD) tenant named contoso.onmicrosoft.com.

You plan to implement pass-through authentication.

You need to prepare the environment for the planned implementation of pass-through authentication.

Which three actions should you perform? Each correct answer presents part of the solution.

NOTE: Each correct selection is worth one point.

- A. Modify the email address attribute for each user account.
- B. From the Azure portal, add a custom domain name.
- C. From Active Directory Domains and Trusts, add a UPN suffix.
- D. Modify the User logon name for each user account.

E. From the Azure portal, configure an authentication method.

F. From a domain controller, install an Authentication Agent.

Correct Answer: BCD

Section: [none]

Explanation

Explanation/Reference:

QUESTION 20

Note: This question is part of a series of questions that present the same scenario. Each question in the series contains a unique solution that might meet the stated goals. Some question sets might have more than one correct solution, while others might not have a correct solution.

After you answer a question in this section, you will NOT be able to return to it. As a result, these questions will not appear in the review screen.

Your company plans to deploy several Microsoft Office 365 services.

You need to design an authentication strategy for the planned deployment. The solution must meet the following requirements:

Users must be able to authenticate during business hours only.

Authentication requests must be processed successfully if a single server fails.

When the password for an on-premises user account expires, the new password must be enforced the next time the user signs in.

Users who connect to Office 365 services from domain-joined devices that are connected to the internal network must be signed in automatically.

Solution: You design an authentication strategy that contains a pass-through authentication model. The solution contains two servers that have an Authentication Agent installed and password hash synchronization configured.

Does this meet the goal?

A. Yes

B. No

Correct Answer: B

Section: [none]

Explanation

Explanation/Reference:

Testlet 2

This is a case study. **Case studies are not timed separately. You can use as much exam time as you would like to complete each case.** However, there may be additional case studies and sections on this exam. You must manage your time to ensure that you are able to complete all questions included on this exam in the time provided.

To answer the questions included in a case study, you will need to reference information that is provided in the case study. Case studies might contain exhibits and other resources that provide more information about the scenario that is described in the case study. Each question is independent of the other questions in this case study.

At the end of this case study, a review screen will appear. This screen allows you to review your answer and to make changes before you move to the next section of the exam. After you begin a new section, you cannot return to this section.

To start the case study

To display the first question in this case study, click the **Next** button. Use the buttons in the left pane to explore the content of the case study before you answer the questions. Clicking these buttons displays information such as business requirements, existing environment, and problem statements. When you are ready to answer a question, click the **Question** button to return to the question.

Overview

Fabrikam, Inc. is an electronics company that produces consumer products. Fabrikam has 10,000 employees worldwide.

Fabrikam has a main office in London and branch offices in major cities in Europe, Asia, and the United States.

Existing Environment

Active Directory Environment

The network contains an Active Directory forest named fabrikam.com. The forest contains all the identities used for user and computer authentication.

Each department is represented by a top-level organizational unit (OU) that contains several child OUs for user accounts and computer accounts.

All users authenticate to on-premises applications by signing in to their device by using a UPN format of *username@fabrikam.com*.

Fabrikam does **NOT** plan to implement identity federation.

Network Infrastructure

Each office has a high-speed connection to the Internet.

Each office contains two domain controllers. All domain controllers are configured as a DNS server.

The public zone for fabrikam.com is managed by an external DNS server.

All users connect to an on-premises Microsoft Exchange Server 2016 organization. The users access their email by using Outlook Anywhere, Outlook on the web, or the Microsoft Outlook app for iOS. All the Exchange servers have the latest cumulative updates installed.

All shared company documents are stored on a Microsoft SharePoint Server farm.

Requirements

Planned Changes

Fabrikam plans to implement a Microsoft 365 Enterprise subscription and move all email and shared documents to the subscription.

Fabrikam plans to implement two pilot projects:

- Project1: During Project1, the mailboxes of 100 users in the sales department will be moved to Microsoft 365.
- Project2: After the successful completion of Project1, Microsoft Teams & Skype for Business will be enabled in Microsoft 365 for the sales department users.

Fabrikam plans to create a group named UserLicenses that will manage the allocation of all Microsoft 365 bulk licenses.

Technical Requirements

Fabrikam identifies the following technical requirements:

- All users must be able to exchange email messages successfully during Project1 by using their current email address.
 - Users must be able to authenticate to cloud services if Active Directory becomes unavailable.
 - A user named User1 must be able to view all DLP reports from the Microsoft 365 admin center.
 - Microsoft Office 365 ProPlus applications must be installed from a network share only. ▪
- Disruptions to email address must be minimized.

Application Requirements

Fabrikam identifies the following application requirements:

- An on-premises web application named App1 must allow users to complete their expense reports online. ▪
- The installation of feature updates for Office 365 ProPlus must be minimized.

Security Requirements

Fabrikam identifies the following security requirements:

- After the planned migration to Microsoft 365, all users must continue to authenticate to their mailbox and to SharePoint sites by using their UPN.
 - The memberships of UserLicenses must be validated monthly. Unused user accounts must be removed from the group automatically.
 - After the planned migration to Microsoft 365, all users must be signed in to on-premises and cloud-based applications automatically.
- The principle of least privilege must be used.

QUESTION 1

You need to meet the application requirement for App1.

Which three actions should you perform? Each correct answer presents part of the solution.

NOTE: Each correct selection is worth one point.

- A. From the Azure Active Directory admin center, configure the application URL settings.
- B. From the Azure Active Directory admin center, add an enterprise application.
- C. On an on-premises server, download and install the Microsoft AAD Application Proxy connector.
- D. On an on-premises server, install the Hybrid Configuration wizard.
- E. From the Azure Active Directory admin center, configure the Software download settings.

Correct Answer: ABC

Section: [none]

Explanation

Explanation/Reference:

References: <https://docs.microsoft.com/en-us/azure/active-directory/manage-apps/application-proxy#how-application-proxy-works>

QUESTION 2

You need to ensure that all the sales department users can authenticate successfully during Project1 and Project2.

Which authentication strategy should you implement for the pilot projects?

- A. password hash synchronization and seamless SSO
- B. pass-through authentication
- C. password hash synchronization
- D. pass-through authentication and seamless SSO

Correct Answer: A

Section: [none]

Explanation

Explanation/Reference:

References:

<https://docs.microsoft.com/en-us/azure/security/azure-ad-choose-authn>



Question Set 1

QUESTION 1

Your network contains an Active Directory forest named contoso.local.

You purchase a Microsoft 365 subscription.

You plan to move to Microsoft and to implement a hybrid deployment solution for the next 12 months.

You need to prepare for the planned move to Microsoft 365.

What is the best action to perform before you implement directory synchronization? More than one answer choice may achieve the goal. Select the **BEST** answer.

- A. Purchase a third-party X.509 certificate.
- B. Rename the Active Directory forest.
- C. Purchase a custom domain name.
- D. Create an external forest trust.

Correct Answer: C

Section: [none]

Explanation



Explanation/Reference:

QUESTION 2

You have a Microsoft Azure Active Directory (Azure AD) tenant named contoso.com.

You add an app named App1 to the enterprise applications in contoso.com.

You need to configure self-service for App1.

What should you do first?

- A. Assign App1 to users and groups.
- B. Add an owner to App1.
- C. Configure the provisioning mode for App1.
- D. Configure an SSO method for App1.

Correct Answer: A

Section: [none]

Explanation

Explanation/Reference:

References: <https://docs.microsoft.com/en-us/azure/active-directory/manage-apps/manage-self-service-access>

QUESTION 3

Your network contains an Active Directory domain named contoso.com.

You have a Microsoft 365 subscription.

You have a Microsoft Azure Active Directory (Azure AD) tenant named contoso.onmicrosoft.com.

You implement directory synchronization.

The developers at your company plan to build an app named App1. App1 will connect to the Microsoft Graph API to provide access to several Microsoft Office 365 services.

You need to provide the URL for the authorization endpoint that App1 must use.

What should you provide?

- A. <https://login.microsoftonline.com/>
- B. <https://contoso.com/contoso.onmicrosoft.com/app1>
- C. <https://login.microsoftonline.com/contoso.onmicrosoft.com/>
- D. <https://myapps.microsoft.com>

Correct Answer: C

Section: [none]

Explanation

Explanation/Reference:

QUESTION 4

Note: This question is part of a series of questions that present the same scenario. Each question in the series contains a unique solution that might meet the stated goals. Some question sets might have more than one correct solution, while others might not have a correct solution.

After you answer a question in this section, you will NOT be able to return to it. As a result, these questions will not appear in the review screen.

Your company has a main office and three branch offices. All the branch offices connect to the main office by using a WAN link. The main office has a high-speed Internet connection. All the branch offices connect to the Internet by using the main office connections.

Users use Microsoft Outlook 2016 to connect to a Microsoft Exchange Server mailbox hosted in the main office.

The users report that when the WAN link in their office becomes unavailable, they cannot access their mailbox.

You create a Microsoft 365 subscription, and then migrate all the user data to Microsoft 365.

You need to ensure that all the users can continue to use Outlook to receive email messages if a WAN link fails.

Solution: For each device, you configure an additional Outlook profile that uses IMAP.

Does this meet the goal?

- A. Yes
- B. No

Correct Answer: B

Section: [none]

Explanation



Explanation/Reference:

QUESTION 5

Note: This question is part of a series of questions that present the same scenario. Each question in the series contains a unique solution that might meet the stated goals. Some question sets might have more than one correct solution, while others might not have a correct solution.

After you answer a question in this section, you will NOT be able to return to it. As a result, these questions will not appear in the review screen.

Your company has a main office and three branch offices. All the branch offices connect to the main office by using a WAN link. The main office has a high-speed Internet connection. All the branch offices connect to the Internet by using the main office connections.

Users use Microsoft Outlook 2016 to connect to a Microsoft Exchange Server mailbox hosted in the main office.

The users report that when the WAN link in their office becomes unavailable, they cannot access their mailbox.

You create a Microsoft 365 subscription, and then migrate all the user data to Microsoft 365.

You need to ensure that all the users can continue to use Outlook to receive email messages if a WAN link fails.

Solution: In each branch office, you add a direct connection to the Internet.

Does this meet the goal?

- A. Yes
- B. No

Correct Answer: A

Section: [none]

Explanation

Explanation/Reference:

QUESTION 6

You have an on-premises web application that is published by using a URL of https://app.contoso.local.

You purchase a Microsoft 365 subscription.

Several external users must be able to connect to the web application.

You need to recommend a solution for external access to the application. The solution must support multi-factor authentication.

Which two actions should you recommend? Each correct answer presents part of the solution.

NOTE: Each correct selection is worth one point.

- A. From an on-premises server, install a connector and then publish the app.
- B. From the Azure Active Directory admin center, enable an Application Proxy.
- C. From the Azure Active Directory admin center, create a conditional access policy.
- D. From an on-premises server, install an Authentication Agent.
- E. Republish the web application by using https://app.contoso.local.

Correct Answer: AB

Section: [none]

Explanation

Explanation/Reference:

References: <https://docs.microsoft.com/en-us/azure/active-directory/manage-apps/application-proxy-add-on-premises-application>

QUESTION 7

You have a Microsoft 365 subscription.

From the Security & Compliance admin center, you create a content search of all the mailboxes that contain the word ProjectX.

You need to export the results of the content search.

What do you need to download the report?

- A. an export key
- B. a password
- C. a user certificate
- D. a certification authority (CA) certificate

Correct Answer: A

Section: [none]

Explanation

**Explanation/Reference:**

References: <https://docs.microsoft.com/en-us/office365/securitycompliance/export-search-results>

QUESTION 8

You have a Microsoft 365 subscription.

All users have their email stored in Microsoft Exchange Online

In the mailbox of a user named User, you need to preserve a copy of all the email messages that contain the word ProjectX.

What should you do first?

- A. From the Exchange admin center, start a mail flow message trace.
- B. From the Security & Compliance admin center, start a message trace.
- C. From the Security & Compliance admin center, create a label and label policy.
- D. From the Exchange admin center, create a mail flow rule.

Correct Answer: C

Section: [none]

Explanation

Explanation/Reference:

References:

<https://docs.microsoft.com/en-us/azure/information-protection/configure-policy-classification>

QUESTION 9

HOTSPOT

You have a data loss prevention (DLP) policy.

You need to increase the likelihood that the DLP policy will apply to data that contains medical terms from the International Classification of Diseases (ICD-9-CM). The solution must minimize the number of false positives.

Which two settings should you modify? To answer, select the appropriate settings in the answer area.


NOTE: Each correct selection is worth one point.

Hot Area:



Content contains ^{*}

Any of these ▾

PII Identifiers 

Sensitive information type

U.S. Social Security Number (SSN)

Instance count

min
1

max
any

Match accuracy


min
50

max
100

Add ▾

and ▾

Any of these ▾

Medical Terms 

Sensitive information type

International Classification of Diseases (ICD-9-CM)

Instance count

min
1

max
any

Match accuracy

min
60


max
100

Add ▾

Correct Answer:

Content contains ^{*}

Any of these ▾

PII Identifiers 

Sensitive information type

U.S. Social Security Number (SSN)

Add ▾

Instance count

min

1

max

any

Match accuracy

min


50

max

100

and ▾

Any of these ▾

Medical Terms 

Sensitive information type

International Classification of Diseases (ICD-9-CM)

Add ▾

Instance count

min

1

max

any

Match accuracy

min

60

max

100

Section: [none]
Explanation

Explanation/Reference:
References:

<https://docs.microsoft.com/en-us/office365/securitycompliance/data-loss-prevention-policies>
<https://docs.microsoft.com/en-us/office365/securitycompliance/what-the-sensitive-information-types-look-for#international-classification-of-diseases-icd-9-cm>

QUESTION 10

You have a Microsoft 365 subscription.

Your company purchases a new financial application named App1.

From Cloud Discovery in Microsoft Cloud App Security, you view the Discovered apps page and discover that many applications have a low score because they are missing information about domain registration and consumer popularity.

You need to prevent the missing information from affecting the score.

What should you configure from the Cloud Discover settings?

- A. App tags
- B. Score metrics
- C. Organization details
- D. Default behavior

Correct Answer: A

Section: [none]

Explanation

Explanation/Reference:

References: <https://docs.microsoft.com/en-us/cloud-app-security/discovered-app-queries>

QUESTION 11

Your company has an on-premises Microsoft Exchange Server 2013 organization.

The company has 100 users.

The company purchases Microsoft 365 and plans to move its entire infrastructure to the cloud.

The company does **NOT** plan to sync the on-premises Active Directory domain to Microsoft Azure Active Directory (Azure AD).

You need to recommend which type of migration to use to move all email messages, contacts, and calendar items to Exchange Online.



What should you recommend?

- A. cutover migration
- B. IMAP migration
- C. remote move migration
- D. staged migration

Correct Answer: A

Section: [none]

Explanation

Explanation/Reference:

References: <https://docs.microsoft.com/en-us/exchange/mailbox-migration/cutover-migration-to-office-365>

QUESTION 12

You create a Microsoft 365 Enterprise subscription.

You assign licenses for all products to all users.

You need to ensure that all Microsoft Office 365 ProPlus installations occur from a network share. The solution must prevent the users from installing Office 365 ProPlus from the Internet.

Which three actions should you perform? Each correct answer presents part of the solution.

NOTE: Each correct selection is worth one point.

- A. From your computer, run `setup.exe /download downloadconfig.xml`.
- B. Create an XML download file.
- C. From the Microsoft 365 admin center, deactivate the Office 365 licenses for all the users.
- D. From each client computer, run `setup.exe /configure installconfig.xml`.
- E. From the Microsoft 365 admin center, configure the Software download settings.

Correct Answer: BDE

Section: [none]

Explanation

Explanation/Reference:

References:

<https://docs.microsoft.com/en-us/deployoffice/overview-of-the-office-2016-deployment-tool#download-the-installation-files-for-office-365-proplus-from-a-localsource>

QUESTION 13

Your on-premises network contains five file servers. The file servers host shares that contain user data.

You plan to migrate the user data to a Microsoft 365 subscription.

You need to recommend a solution to import the user data into Microsoft OneDrive.

What should you include in the recommendation?

- A. Configure the settings of the OneDrive client on your Windows 10 device.
- B. Configure the Sync settings in the OneDrive admin center.
- C. Run the SharePoint Hybrid Configuration Wizard.
- D. Run the SharePoint Migration Tool.

Correct Answer: D

Section: [none]

Explanation



Explanation/Reference:

References: <https://docs.microsoft.com/en-us/sharepointmigration/introducing-the-sharepoint-migration-tool>

QUESTION 14

Your network contains two Active Directory forests. Each forest contains two domains. All client computers run Windows 10 and are domain-joined.

You plan to configure Hybrid Azure AD join for the computers.

You create a Microsoft Azure Active Directory (Azure AD) tenant.

You need to ensure that the computers can discover the Azure AD tenant.

What should you create?

- A. a new computer account for each computer
- B. a new service connection point (SCP) for each domain
- C. a new trust relationship for each forest

D. a new service connection point (SCP) for each forest

Correct Answer: D

Section: [none]

Explanation

Explanation/Reference:

References: <https://docs.microsoft.com/en-us/azure/active-directory/devices/hybrid-azuread-join-manual>



<https://vceplus.com/>