

644-066.VCEplusy.premium.exam.64q

Number: 644-066
Passing Score: 800
Time Limit: 120 min
File Version: 1.0



Website: <https://vceplus.com>

VCE to PDF Converter: <https://vceplus.com/vce-to-pdf/>

Facebook: <https://www.facebook.com/VCE.For.All.VN/>

Twitter : https://twitter.com/VCE_Plus

644-066

Cisco Advanced Routing and Switching Solutions Specialist

Version 1.0



Exam A

QUESTION 1

During which phase is a proposal developed and delivered?

- A. Prepare
- B. Plan
- C. Design
- D. Operate

Correct Answer: A

Section: (none)

Explanation

Explanation/Reference:

QUESTION 2 Which of these correctly identifies the six phases of the Cisco Lifecycle Services framework?

- A. Prepare, Plan, Create, Implement, Operate, and Improve
- B. Prepare, Plan, Design, Implement, Operate, and Optimize
- C. Prepare, Plan, Design, Apply, Operate, and Manage
- D. Prepare, Plan, Design, Implement, Operate and Manage

Correct Answer: B

Section: (none)

Explanation

Explanation/Reference:



QUESTION 3 In which phase is a systems acceptance test plan developed and documented?

- A. Implement
- B. Design
- C. Prepare
- D. Operate

Correct Answer: B

Section: (none)

Explanation

Explanation/Reference:

QUESTION 4 In which service component of the optimize phase would you assess the routing and switching system and recommend activities such as optimizing device configurations, capacity planning, or traffic analysis?

- A. Change Management
- B. Security Assessment
- C. Operations Assessment
- D. Security Administration
- E. Operations Readiness Assessment
- F. Technology Assessment

Correct Answer: F

Section: (none)

Explanation

Explanation/Reference:

QUESTION 5

You have a customer who would like to upgrade their branch to Metro Ethernet. Which profile can be used as a migration profile to show the customer how to upgrade their branch?

- A. single-tier branch profile
- B. double-tier branch profile
- C. triple-tier branch profile
- D. multitier branch profile

Correct Answer: B

Section: (none)

Explanation

Explanation/Reference:

QUESTION 6

When designing a branch office solution for a customer, you want to share the pros and cons of the Internet WAN deployment model. Which are two characteristics of this model? (Choose two.)

- A. It is the most commonly used deployment model.
- B. It provides the most cost savings.
- C. It is the least secure of the three deployment models.
- D. It is a traditional hub-and-spoke model.
- E. Data privacy is protected through traffic separation such as Frame Delay.



Correct Answer: BC

Section: (none)

Explanation

Explanation/Reference:

QUESTION 7

You need a solution that provides high-level integrated security and seamless roaming. Which Cisco advanced technology should you implement?

- A. IP communications
- B. Mobility
- C. Security
- D. Network Management
- E. Data Center

Correct Answer: B

Section: (none)

Explanation

Explanation/Reference:

QUESTION 8 You need to document an existing network. What should you do first?

- A. map the existing network topology

- B. characterize the existing network and sites
- C. audit the existing network and sites
- D. obtain organizational input

Correct Answer: D

Section: (none)

Explanation

Explanation/Reference:

QUESTION 9

A customer wants to know about the benefits of the Cisco Validated Designs (CVDs). What are the two primary benefits to the customer that you should share? (Choose two.)

- A. CVDs showcase innovation and next-generation technology.
- B. CVDs reduce pre-production testing and accelerate deployment planning.
- C. With CVDs, customer requirements are assumed by the specific design.
- D. CVDs baseline-tested designs give deployment confidence.
- E. CVDs are backed by AS services.

Correct Answer: BD

Section: (none)

Explanation

Explanation/Reference:

QUESTION 10 What are three characteristics of Cisco Validated Designs (CVDs)?
(Choose three.)

- A. With CVDs, products and technologies are viewed as siloed components.
- B. CVDs allow customers to take designs and get to production more quickly.
- C. CVDs allow you to showcase innovation and next-generation technology.
- D. CVDs provide proof-of-concept testing.
- E. CVDs are a cross-segment effort between commercial and enterprise segment teams only.



Correct Answer: BCD

Section: (none)

Explanation

Explanation/Reference:

QUESTION 11 What are three characteristics of the Cisco Validated Designs (CVDs) architectural selling approach?
(Choose three.)

- A. This selling approach is based on customer requirements.
- B. Integrated solutions are aligned to customer buying patterns.
- C. This selling approach does not support verticalization.
- D. The PINs have been pushed out to partners and have been well-received.

Correct Answer: ABD

Section: (none)

Explanation

Explanation/Reference:

QUESTION 12

What is the focus for Cisco for driving integrated networks?

- A. CDO
- B. CMO
- C. CVDs
- D. PIN

Correct Answer: D

Section: (none)

Explanation

Explanation/Reference:

QUESTION 13 Which three features does the Cisco Catalyst 4500 Series Switch offer?

(Choose three.)

- A. nonblocking switching capabilities for Layers 2 and 3 only
- B. integrated resiliency in software and hardware
- C. built-in spam blocker
- D. concurrent services provisioning
- E. TCAM resources that enable "high feature capacity" with 64,000 entries
- F. policy-based VM connectivity

Correct Answer: BDE

Section: (none)

Explanation

Explanation/Reference:

**QUESTION 14**

You need switches that will provide ideal access-layer services for a small enterprise LAN environment as well as ensure maximum productivity and investment protection by supporting deployments of new applications such as IP telephony, wireless access, and video surveillance.

- A. Cisco Catalyst Express 500
- B. Cisco Catalyst 2960 Series Switch
- C. Cisco Catalyst 3560 Series Switch
- D. Cisco Catalyst Blade Switch 3000 Series

Correct Answer: C

Section: (none)

Explanation

Explanation/Reference:

QUESTION 15

What are four characteristics of the Cisco ASR 1000 Series Aggregation Services Routers? (Choose four.)

- A. It is launched with three chassis sizes: 2RU, 4RU, and 6RU.
- B. It provides SPAs that cannot be used interchangeably with other platforms.
- C. It has a QFP that provides faster, easier provisioning of new services, low-touch deployment, and faster qualification.
- D. It provides a multiplexer system that allows rack-and-roll architecture.
- E. It provides high availability with complete integration of control plane and forwarding plane.
- F. It provides state-of-the-art QoS and is designed to be oversubscribed so that it is able to handle more traffic than the total system bandwidth.

Correct Answer: ACDF

Section: (none)

Explanation

Explanation/Reference:

QUESTION 16

When designing an advanced technology-ready organization, what four features should you look for when analyzing the initial performance of any solution? (Choose four.)

- A. It should allow for future growth.
- B. It should have no component above 50 percent of its maximum.
- C. It should only use a select few devices and links.
- D. It should use QoS mechanisms.
- E. It should not use an SLA.
- F. It should only consider top-of-rack installations.

Correct Answer: ABDF

Section: (none)

Explanation

Explanation/Reference:

QUESTION 17

Your customer is a major international airport. The airport requires keeping connectivity options flexible for wireless and wired clients, video surveillance, and baggage distribution. At the same time, it requires isolating specific closed user groups such as air traffic control communication. Which design best suits the needs of your customer?

- A. A full-mesh design with no dedicated core.
- B. A two-layered design with a Cisco Catalyst 4500 Series Switch at the core layer.
- C. A three-layered design with a Cisco Catalyst 3750 Series Switch at the core layer.
- D. A three-layered design with a Cisco Catalyst 6500 Series Switch at the core layer.



Correct Answer: D

Section: (none)

Explanation

Explanation/Reference:

QUESTION 18

Your customer needs to send encrypted data among three branch offices. You want to ensure that all devices in a group can successfully exchange encrypted packets. Which transport network augmentation will provide any-to-any IPsec connectivity to ensure that successful packet exchange occurs?

- A. DMVPN
- B. GET VPN
- C. GRE over IPsec
- D. VTIs

Correct Answer: B

Section: (none)

Explanation

Explanation/Reference:

QUESTION 19

You are designing a campus network for your customer. You need to provide the customer with uplink connectivity because a single access switch is used to provide connectivity to more than one user group. Which access layer component should you deploy?

- A. IEEE 802.1Q trunks
- B. integrated security features
- C. IP telephony design
- D. spanning-tree mechanisms

Correct Answer: A

Section: (none)

Explanation

Explanation/Reference:

QUESTION 20 Which Cisco PIN architecture uses Cisco Integrated Services Routers to support existing and emerging IP technologies, including IP telephony and video, point-of-sale terminals, kiosks, and RFID devices?

- A. Data Center
- B. Teleworker
- C. Campus
- D. Branch

Correct Answer: D

Section: (none)

Explanation

Explanation/Reference:

QUESTION 21

Which Cisco advanced technology provides interconnected storage area networks so that you can reduce costs and improve reliability?

- A. Cisco Unified Communications
- B. Data Center
- C. Mobility
- D. Network Management
- E. Security

Correct Answer: B

Section: (none)

Explanation

Explanation/Reference:

QUESTION 22 During the baselining process, what should you do immediately after you compile an inventory?

- A. verify that the SNMP MIB is supported in the relevant core device
- B. poll and record specific SNMP MID objects from the device
- C. fix identified, immediate problems
- D. implement monitoring using SNMP or RMON

Correct Answer: A

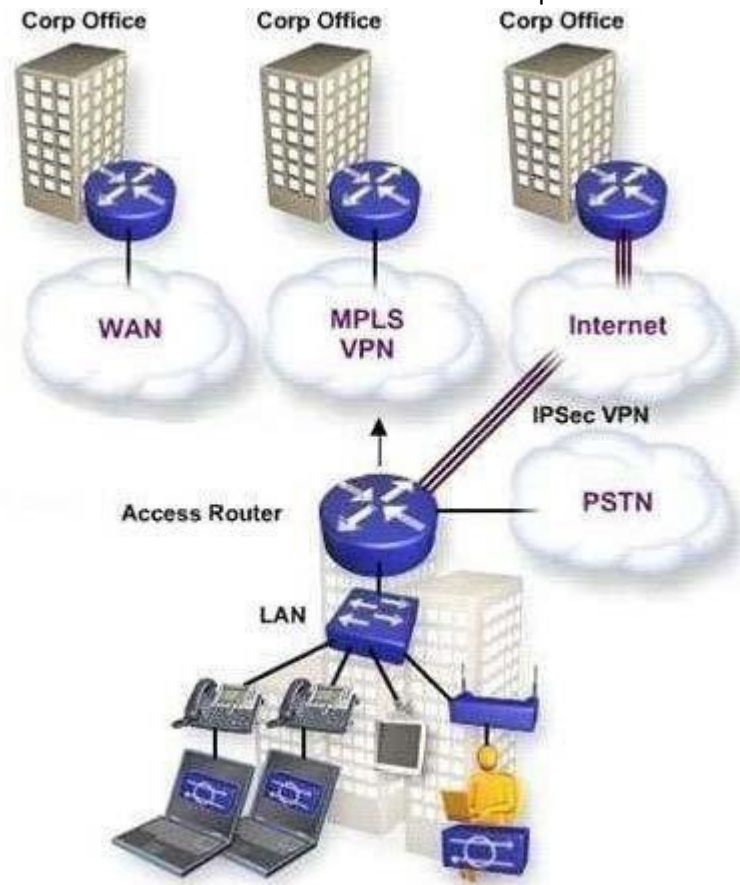
Section: (none)

Explanation

Explanation/Reference:

QUESTION 23

Refer to the exhibit. Which PIN architecture is represented?



- A. Branch
- B. Campus
- C. Data Center
- D. Teleworker

Correct Answer: A

Section: (none)

Explanation

Explanation/Reference:

QUESTION 24 Which two technologies are associated with the Campus PIN architecture? (Choose two.)

- A. DMVPN
- B. GET VPN
- C. IPv4 to IPv6
- D. Layer 2 to Layer 3
- E. MPLS VPN

Correct Answer: CD

Section: (none)

Explanation

Explanation/Reference:

QUESTION 25 What are three important characteristics of the Cisco Catalyst 2960G-24TC switch?
(Choose three.)

- A. each Ethernet 10/100/1000 port supports up to six priority queues each with two drop thresholds
- B. does not support 802.3af PoE
- C. uses the GBIC/SFP form factor for dual-purpose ports
- D. provides a maximum forwarding bandwidth of 32 Gbps
- E. contains 24 Ethernet 10/100/1000 ports and 2 dual-purpose slots

Correct Answer: BCD

Section: (none)

Explanation

Explanation/Reference:

QUESTION 26 Which service component would you typically perform prior to the handover to the customer's operations organization and involves running system operations to ensure that the solution is ready for production?

- A. Systems Integration
- B. Acceptance Testing
- C. Skill Assessment
- D. Project Close Out
- E. Security Check

Correct Answer: B

Section: (none)

Explanation

Explanation/Reference:



QUESTION 27 What is a primary objective of the security architecture assessment?

- A. document power and UPS availability
- B. to integrate routing and switching components
- C. create a design specification document
- D. document the customer's current and future technology projects

Correct Answer: B

Section: (none)

Explanation

Explanation/Reference:

QUESTION 28

Refer to the exhibit. What are three key benefits of implementing this branch solution using the components listed? (Choose three.)

CISCO2811-AC-IP	2811 w/ AC+POE,2FE,4HWICs,2PVDMs,1NME,2AIMS,IP BASE,64F/256D
S28NIPV-12403	Cisco 2800 IP VOICE W/O CRYPTO
NME-16ES-1G-P	EtherSwitch Service Mod 16 10/100T POE + 1 GE,IP BASE
PVDM2-16	16-Channel Packet Voice/Fax DSP Module
VIC2-2FXO	Two-port Voice Interface Card - FXO (Universal)
VIC2-2FXS	Two-port Voice Interface Card - FXS
CAB-AC	Power Cord,110V
ROUTER-SDM	Device manager for routers
PWR-2811-AC-IP	Cisco 2811 AC/IP power supply
MEM2800-256D-INC	256MB DDR DRAM Memory factory default for the Cisco 2800
MEM2800-64CF-INC	64MB CF default for Cisco 2800 Series

- A. supports standard 802.3af PoE
- B. provides feature parity with the Cisco Catalyst 3750 Series of switches
- C. provides integrated configuration of both routing and switching functions under a single Cisco IOS instance.
- D. switch ports can be stacked with external Catalyst Series switches using Cisco StackWise technology
- E. maximizes concurrent routing and switching performance by using local processors and switching engines

Correct Answer: ABE

Section: (none)

Explanation

Explanation/Reference:

QUESTION 29 When issuing the Cisco IOS command show power in the Cisco Catalyst 6509 Switch, which four types of information can be gathered? (Choose four.)

- A. IOS revision level
- B. operational state
- C. line card revision
- D. power supply fan status
- E. line card administrative state and slot location
- F. power capacity in watts and amperage by chassis and line card



Correct Answer: BDEF

Section: (none)

Explanation

Explanation/Reference:

QUESTION 30 In the Cisco Catalyst 6500-E Series chassis, what are three key chassis specifications? (Choose three.)

- A. requires Cisco IOS 12.2(1) SXD and beyond
- B. three-slot chassis supports CEF720 line cards
- C. is backward-compatible with all existing software versions
- D. six- and nine-slot chassis support only 6000-W power supplies
- E. supports all existing supervisors, line cards, switch fabrics, and software releases

Correct Answer: BCE

Section: (none)

Explanation

Explanation/Reference:

QUESTION 31

Given a Cisco Catalyst 4500 Series Switch with redundant supervisors, what feature allows phone calls to remain up in the event of a supervisor failure?

- A. HSRP
- B. SSO
- C. CEF
- D. NSF
- E. NetFlow

Correct Answer: B

Section: (none)

Explanation

Explanation/Reference:

QUESTION 32 Which three of these are features of the Cisco Catalyst 4900 Series Switches?
(Choose three.)

- A. one RU
- B. stackable
- C. fixed configuration
- D. Power over Ethernet
- E. redundant power supplies
- F. Layer 2 through Layer 7 switching capabilities

Correct Answer: ACE

Section: (none)

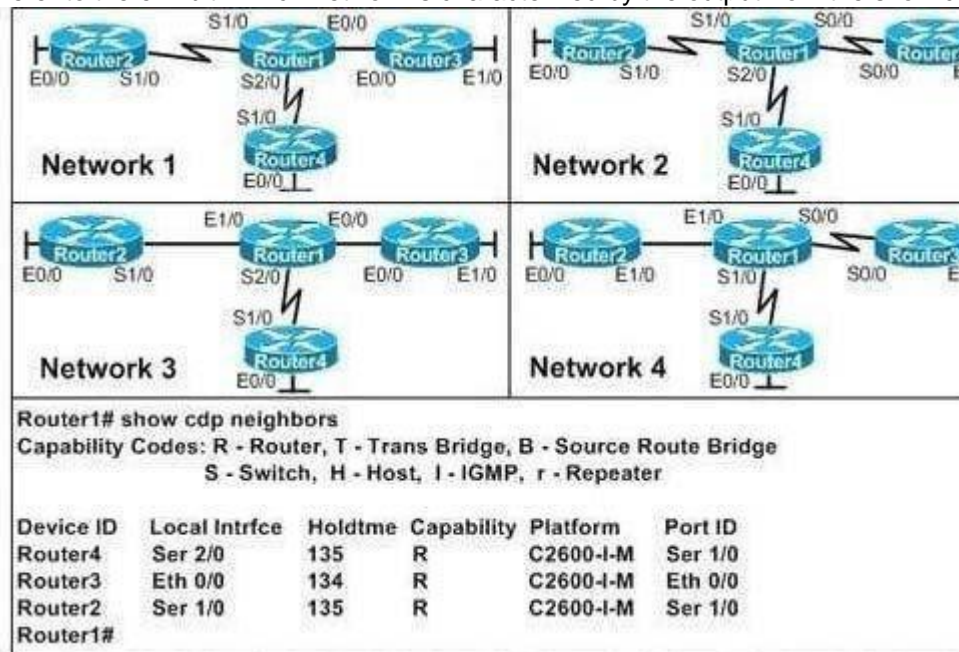
Explanation

Explanation/Reference:



QUESTION 33

Refer to the exhibit. Which network is characterized by the output from the show cdp neighbors command?



- A. Network 1
- B. Network 2
- C. Network 3
- D. Network 4

Correct Answer: A

Section: (none)

Explanation

Explanation/Reference:

QUESTION 34

Which is a reliable network auditing methodology for discovering applications on the network and their usage characteristics?

- A. Interview system administrators regarding the networked applications.
- B. Conduct a network usage study over a given period of time.
- C. Place a sniffer device on the network to grasp a snapshot of traffic on the network.
- D. Conduct a network inventory of servers and applications installed on them.

Correct Answer: B

Section: (none)

Explanation

Explanation/Reference:

QUESTION 35 Your network includes a Cisco Catalyst 6500 Switch with an FWSM module. You need Layer 2 connectivity between two routers located on different firewall interfaces. Which feature will you need in order to provide this connectivity?

- A. router mode
- B. virtual firewall
- C. stateful firewall
- D. transparent mode
- E. two FWSM modules in failover mode



Correct Answer: D

Section: (none)

Explanation

Explanation/Reference:

QUESTION 36 Which supervisor module can be used in the Cisco Catalyst 4510R chassis? Select the best response.

- A. Supervisor II-Plus
- B. Supervisor IV
- C. Supervisor V-10GE
- D. Supervisor II-TS

Correct Answer: C

Section: (none)

Explanation

Explanation/Reference:

QUESTION 37

Which two tools can you use to manage and configure a Cisco Catalyst Express 500 Series Switch? (Choose two.)

- A. CLI
- B. Cisco Network Assistant
- C. Cisco Smartports Advisor

D. Device Manager with embedded GUI

Correct Answer: BD

Section: (none)

Explanation

Explanation/Reference:

QUESTION 38

Which security feature of a Cisco Catalyst 2960 Series Switch can be used to prevent clients from acquiring an IP address from unauthorized servers?

- A. port security
- B. 802.1X in conjunction with Cisco Secure ACS
- C. DHCP snooping
- D. MAC address notification

Correct Answer: C

Section: (none)

Explanation

Explanation/Reference:

QUESTION 39 Which two of these tasks are important when designing for high availability? (Choose two.)

- A. selecting high-end devices
- B. identifying single points of failures
- C. improving performance to consequently increase availability
- D. introducing redundancy to mitigate potential single points of failure
- E. removing devices and features that introduce single points of failures



Correct Answer: BD

Section: (none)

Explanation

Explanation/Reference:

QUESTION 40 Which two of these protocols can be used to provide secure connectivity when connecting a branch office to the campus core? (Choose two.)

- A. GRE
- B. L2TP
- C. IPsec
- D. IP in IP
- E. L2TP over IPsec

Correct Answer: CE

Section: (none)

Explanation

Explanation/Reference:

QUESTION 41 Which layer in a hierarchical network is considered optional in smaller campus networks?

- A. access

- B. distribution
- C. core
- D. remote
- E. DMZ
- F. aggregation

Correct Answer: C

Section: (none)

Explanation

Explanation/Reference:

QUESTION 42

Which of these spanning tree mechanisms can be used to ensure that access switches cannot become transit nodes in a spanning tree?

- A. PortFast
- B. UplinkFast
- C. loop guard
- D. root guard
- E. BPDU guard
- F. BPDU filter

Correct Answer: D

Section: (none)

Explanation

Explanation/Reference:



QUESTION 43 Which WAN type provides the most secure transport?

- A. Frame Relay
- B. Private WAN
- C. Internet with SLA
- D. IPsec over MPLS VPN
- E. dial-up connection over a circuit-switched network

Correct Answer: D

Section: (none)

Explanation

Explanation/Reference:

QUESTION 44 Due to strict privacy regulations, the hospital for which you are designing a solution needs to be certain that endpoint devices are interrogated for policy compliance. What can be used to assure that this is accomplished?

- A. Cisco Identity Based Networking Services
- B. mobility services
- C. network virtualization services
- D. network access control

Correct Answer: D

Section: (none)

Explanation

Explanation/Reference:

QUESTION 45

When designing a Cisco Enterprise WAN solution, which transport augmentation simplifies management of IPsec and provides support for IGPs?

- A. IPsec Direct Encapsulation
- B. GRE over IPsec
- C. DMVPN
- D. GET VPN

Correct Answer: C

Section: (none)

Explanation

Explanation/Reference:

QUESTION 46

While designing a Cisco Enterprise WAN for a company, you weigh the pros and cons of using Frame Relay and ATM. What are two possible cons of these solutions? (Choose two.)

- A. Only Frame Relay incorporates all QoS technologies.
- B. Neither Frame Relay nor ATM is IP-aware.
- C. Although Frame Relay provides differentiated QoS inside the transport network, ATM does not.
- D. ATM does not include any encryption technology that can be managed from the enterprise side.
- E. Although ATM does not require that IPsec be deployed on routers for security, IPsec is required for Frame Relay security.

Correct Answer: BD

Section: (none)

Explanation



Explanation/Reference:

QUESTION 47

You are designing a campus network and you want to provide a resilient default gateway to end services. Which campus network component should you use?

- A. Layer 3 routing protocols
- B. UniDirectional Link Detection
- C. First Hop Redundancy Protocol
- D. load balancing

Correct Answer: C

Section: (none)

Explanation

Explanation/Reference:

QUESTION 48

While designing a Cisco Enterprise WAN solution for your customer, you want to allow the usage of routing protocols across the tunnel in order to simplify routing information distribution and failure mitigation. Which transport network augmentation should you use?

- A. IPsec Direct Encapsulation
- B. GRE over IPsec
- C. DMVPN
- D. GET VPN

Correct Answer: B

Section: (none)

Explanation

Explanation/Reference:

QUESTION 49

What is a characteristic specific to the Cisco Enterprise Branch of One (Teleworker) PIN Architecture?

- A. Cisco Unified Communications provides cost-effective access to a centralized system with voice and unified messaging services.
- B. Cisco Unified Communications with integrated IP communications, wireless networking, and advanced security enables the enterprise to rapidly adapt to and capitalize on the changing business environment.
- C. An optimized network utilizes the WAN and LAN to reduce traffic, as well as save bandwidth and operational expenses.
- D. Cisco management tools enable you to centrally configure, monitor, and manage devices at remote sites from the campus.

Correct Answer: A

Section: (none)

Explanation

Explanation/Reference:

QUESTION 50 What are two characteristics of the Cisco Enterprise WAN and MAN Architecture? (Choose two.)

- A. It provides converged voice, video, and data services specifically to campus architectures.
- B. It needs to accurately combine traffic by devices, users, and/or applications.
- C. It provides cost-effective interoperation, and suits a variety of IT budgets and growth expectations.
- D. It addresses deployment scenarios that are not typical.
- E. It addresses the drive for heightened security.



Correct Answer: CE

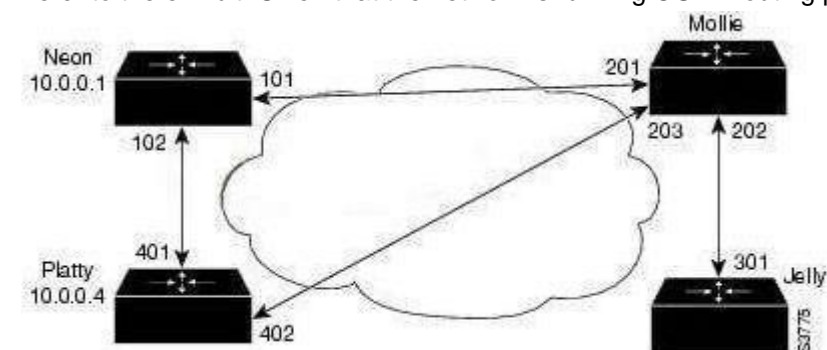
Section: (none)

Explanation

Explanation/Reference:

QUESTION 51

Refer to the exhibit. Given that the network is running OSPF routing protocol over the WAN, which type of OSPF routing is being used on the router labeled "Mollie"?



- A. point to point
- B. virtual link
- C. point to multipoint
- D. route redistribution

Correct Answer: C

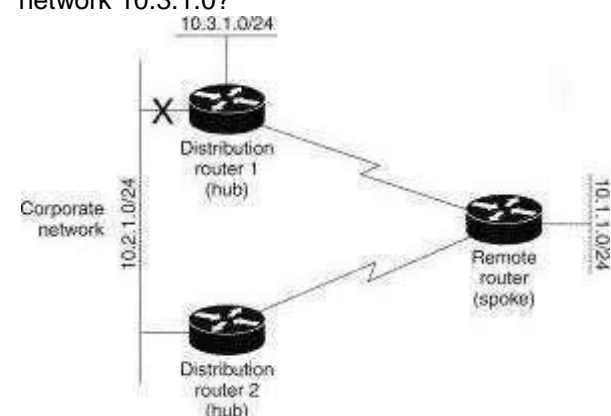
Section: (none)

Explanation

Explanation/Reference:

QUESTION 52

Refer to the exhibit. The network is running the EIGRP routing protocol. Distribution router 1 loses the link to the corporate network. How should the remote spoke router be configured to prevent it from being the next-lowest-cost path to network 10.3.1.0?



- A. Disable split horizon.
- B. Configure it as an EIGRP stub router.
- C. Enable route filtering.
- D. Configure a floating static route to network 10.3.1.0.

Correct Answer: B

Section: (none)

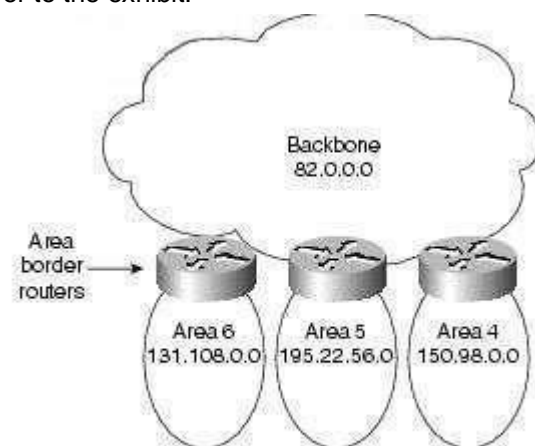
Explanation

Explanation/Reference:



QUESTION 53

Refer to the exhibit.



Which would be a benefit of designing the OSPF network as shown?

- A. Routes can be redistributed within the individual areas.
- B. The backbone area does not need any internal routers.
- C. Route summarization is enabled by default in this type of configuration.
- D. Route summarization configuration at the ABRs is greatly simplified.

Correct Answer: D

Section: (none)

Explanation

Explanation/Reference:

QUESTION 54

You have a client that currently has a single connection to an ISP. Your client is growing rapidly and would like to provide more capacity to the Internet without losing the ability to support high availability. Which methodology will support dual-homed connections to the same ISP and also support high availability?

- A. VRRP
- B. HSRP
- C. RPR+D. GLBP

Correct Answer: D

Section: (none)

Explanation

Explanation/Reference:

QUESTION 55

Your client is adding a new R&D facility to its existing, three-building corporate campus. The new building will be four stories high and house from 150 to 400 employees. The client would like to deploy IP communications to this building and connect it to the existing campus TDM phone system. The new building will use collaborative workspaces for each team, and it will require that each team member have the flexibility to move among work areas yet remain connected to the network and receive phone calls. Which four technologies will be applicable here? (Choose four.)

- A. wireless
- B. switching
- C. security
- D. storage
- E. PoE
- F. AONS



Correct Answer: ABCE

Section: (none)

Explanation

Explanation/Reference:

QUESTION 56

A client organization is investigating deploying IP communications. It has a traditional hub and spoke Frame Relay WAN. It has five remote sites, and the WAN link speed for each location is 512 kbps. The WAN supports typical IP-based applications, but the client will also be rolling out a new ERP application that will be considered mission critical. Which three QoS mechanisms will be useful in redesigning the WAN to support the mission-critical application and IP communications? (Choose three.)

- A. LFI
- B. CBWFQ
- C. 5 to 11 class model
- D. LLQ
- E. cRTP
- F. WFQ

Correct Answer: ADE

Section: (none)

Explanation

Explanation/Reference:

QUESTION 57

You have received an RFP from a potential client to design a network for a new corporate campus. This campus will encompass administration, sales, and R&D, and it will pull all the distributed IT functions into a new data center. The campus will consist of five buildings, each with four floors. The buildings will be linked via high-strand-count, single-mode fiber-optic cable to the new data center in building 3. Each building will have an MDF with at least one telco closet per floor and at least two runs of Category 5 UTP cable will go to each work location. Multi-strand multimode will connect each telco closet to the MDF. Each MDF will have dedicated power circuits and be backed up by batteries in the basement of each building and a generator. The corporation will require 3500 TDM telephones and approximately 100 of these will be in a call center in building 2. The corporation needs to increase collaboration in the workforce. Employees need the flexibility to be able to move from one floor to another or from one building to another to accomplish their jobs. Managers also need this flexibility without losing connectivity to the corporate network or their phones. Building 4 will house R&D. This portion of the network requires connectivity to the Internet, but it also must restrict which employees have access to certain parts of the R&D network. The data center will house all connections to the Internet and to the PSTN. The corporation also provides access to customers for customized applications support. A network operations center will monitor and maintain the network on a 365/24/7 basis. Which advanced technologies will be applicable to answering this RFP? (Choose three.)

- A. security
- B. IP communications
- C. storage
- D. data center
- E. routing and switching

Correct Answer: ACD

Section: (none)

Explanation

Explanation/Reference:

QUESTION 58

Which two of these are features of the Cisco 2851 Integrated Services Router, but not features of Cisco 1800 Series Integrated Services Routers? (Choose two.)

- A. 32-Gbps switching bus
- B. built-in wireless module
- C. Cisco SDM for simplified management
- D. two integrated 10/100/1000 Ethernet ports
- E. Power over Ethernet support for 10/100 Ethernet ports
- F. slots dedicated to Cisco High-Density Analog and Digital Extension Module for Voice and Fax



Correct Answer: DF

Section: (none)

Explanation

Explanation/Reference:

QUESTION 59 Which two of these features can be managed by the Cisco SDM application? (Choose two.)

- A. VoIP
- B. HSRP
- C. IPsec VPN
- D. QoS policy
- E. PoE power consumption

Correct Answer: CD

Section: (none)

Explanation

Explanation/Reference:

QUESTION 60 What does not need to be considered when looking into the customer workflow?

- A. How does the customer access the online software solutions?
- B. How many different switch products are in use at the customer network?
- C. How can the service partner instantly connect with outsourced engineers?
- D. How can customer and service collaborate and start video communication?

Correct Answer: B

Section: (none)

Explanation

Explanation/Reference:

QUESTION 61 Which two statements accurately describe the impact of BYOD to the network? (Choose two.)

- A. TCO is reduced because employees use their privately owned devices.
- B. BYOD increases productivity, but IT must find ways to integrate the utilized devices seamlessly with wired as well as wireless networks.
- C. BYOD adds the requirement to support multiple operating systems.
- D. Corporate users expect the same look and feel when using their own devices.

Correct Answer: BC

Section: (none)

Explanation

Explanation/Reference:

QUESTION 62 Which three are main drivers for changing operations? (Choose three.)

- A. change of market trends
- B. change of competition
- C. change of application software version
- D. change of relative strengths
- E. migration of the enterprise network to IPv6
- F. migration to Cisco single-vendor networking solution Correct



Correct Answer: ABD

Section: (none)

Explanation

Explanation/Reference:

QUESTION 63 Which three best describe the Cisco Borderless Network Architecture? (Choose three.)

- A. Infrastructure and network services are the basis for user services.
- B. A Cisco Borderless Network is based on a common network infrastructure.
- C. Routers and switches provide transport services and operate at Layer 2 and Layer 3 of the Cisco Borderless Network Architecture.
- D. A Cisco Borderless Network Architecture provides borderless network services.
- E. User services are not part of the Cisco Borderless Network Architecture.

Correct Answer: ABD

Section: (none)

Explanation

Explanation/Reference:

QUESTION 64 Which three of the following are major trends that fuel the demand for routing and switching?
(Choose three.)

- A. Mobility
- B. Video
- C. Bandwidth optimization
- D. Cloud
- E. IT standardization

Correct Answer: ABD

Section: (none)

Explanation

Explanation/Reference: