

Cisco.VCEup.350-401.15-June-2022.214q

Number: 350-401
Passing Score: 800
Time Limit: 120 min



350-401

Implementing Cisco Enterprise Network Core Technologies



Exam A**QUESTION 1**

Which function does a fabric edge node perform in an SD-Access deployment?

- A. Connects endpoints to the fabric and forwards their traffic.
- B. Encapsulates end-user data traffic into LISP.
- C. Connects the SD-Access fabric to another fabric or external Layer 3 networks.
- D. Provides reachability between border nodes in the fabric underlay.

Correct Answer: A

Section: (none)

Explanation

Explanation/Reference:

QUESTION 2

Refer to the exhibit.

```
R1# sh run | begin line con
line con 0
  exec-timeout 0 0
  privilege level 15
  logging synchronous
  stopbits 1
line aux 0
  exec-timeout 0 0
  privilege level 15
  logging synchronous
  stopbits 1
line vty 0 4
  password 7 045802150C2E
  login
line vty 5 15
  password 7 045802150C2E
  login
!
end
```

```
R1# sh run | include aaa | enable
no aaa new-model
R1#
```

Which privilege level is assigned to VTY users?

- A. 1
- B. 7
- C. 13
- D. 15

Correct Answer: A

Section: (none)

Explanation

Explanation/Reference:

QUESTION 3 What is the difference between a RIB and a FIB?

- A. The FIB is populated based on RIB content.
- B. The RIB maintains a mirror image of the FIB.
- C. The RIB is used to make IP source prefix-based switching decisions.
- D. The FIB is where all IP routing information is stored.

Correct Answer: A

Section: (none)

Explanation

Explanation/Reference:

QUESTION 4 What is a requirement for an Ansible-managed node?

- A. It must have an SSH server running.
- B. It must be a Linux server or a Cisco device.
- C. It must support ad hoc commands.
- D. It must have an Ansible Tower installed.

Correct Answer: A

Section: (none)

Explanation

Explanation/Reference:

QUESTION 5 A client device fails to see the enterprise SSID, but other client devices are connected to it.

What is the cause of this issue?

- A. The client has incorrect credentials stored for the configured broadcast SSID.
- B. The hidden SSID was not manually configured on the client.
- C. The broadcast SSID was not manually configured on the client.
- D. The client has incorrect credentials stored for the configured hidden SSID.

Correct Answer: B

Section: (none)

Explanation

Explanation/Reference:

QUESTION 6 Which two descriptions of FlexConnect mode for Cisco APs are true? (Choose two.)

- A. APs that operate in FlexConnect mode cannot detect rogue APs.
- B. When connected to the controller, FlexConnect APs can tunnel traffic back to the controller.
- C. FlexConnect mode is used when the APs are set up in a mesh environment and used to bridge between each other.
- D. FlexConnect mode is a feature that is designed to allow specified CAPWAP-enabled APs to exclude themselves from managing data traffic between clients and infrastructure.

Correct Answer: B

Section: (none)

Explanation

Explanation/Reference:

Reference: https://www.cisco.com/c/en/us/td/docs/wireless/controller/7-2/configuration/guide/cg/cg_flexconnect.html

QUESTION 7 Which OSPF network types are compatible and allow communication through the two peering devices?

- A. point-to-multipoint to nonbroadcast
- B. broadcast to nonbroadcast
- C. point-to-multipoint to broadcast
- D. broadcast to point-to-point

Correct Answer: B

Section: (none)

Explanation

Explanation/Reference:

Reference: <https://www.freeccnaworkbook.com/workbooks/ccna/configuring-ospf-network-types>

QUESTION 8 Which NGFW mode blocks flows crossing the firewall?

- A. tap
- B. inline
- C. passive
- D. inline tap

Correct Answer: B

Section: (none)

Explanation

Explanation/Reference:

Reference: <https://www.cisco.com/c/en/us/support/docs/security/firepower-ngfw/200924-configuring-firepower-threat-defense-int.html>

QUESTION 9 Which statement about route targets is true when using VRF-Lite?

- A. Route targets control the import and export of routes into a customer routing table.
- B. When BGP is configured, route targets are transmitted as BGP standard communities.
- C. Route targets allow customers to be assigned overlapping addresses.
- D. Route targets uniquely identify the customer routing table.

Correct Answer: A

Section: (none)

Explanation

Explanation/Reference:

QUESTION 10 How does Cisco TrustSec enable more flexible access controls for dynamic networking environments and data centers?

- A. uses flexible NetFlow
- B. assigns a VLAN to the endpoint
- C. classifies traffic based on advanced application recognition
- D. classifies traffic based on the contextual identity of the endpoint rather than its IP address

Correct Answer: D

Section: (none)

Explanation

Explanation/Reference:

Reference: https://www.cisco.com/c/dam/en/us/products/collateral/security/identity-services-engine/at_a_glance_c45-726831.pdf

QUESTION 11

Refer to the exhibit.

```
R1#debug ip ospf hello
R1#debug condition interface Fa0/1
    Condition 1 Set
```

Which statement about the OSPF debug output is true?

- A. The output displays OSPF hello messages which router R1 has sent or received on interface Fa0/1.
- B. The output displays all OSPF messages which router R1 has sent or received on all interfaces.
- C. The output displays all OSPF messages which router R1 has sent or received on interface Fa0/1.
- D. The output displays OSPF hello and LSACK messages which router R1 has sent or received.

Correct Answer: A

Section: (none)

Explanation

Explanation/Reference:

QUESTION 12

Which LISP infrastructure device provides connectivity between non-LISP sites and LISP sites by receiving non-LISP traffic with a LISP site destination?

- A. PTR
- B. map resolver
- C. map server
- D. PETR

Correct Answer: A

Section: (none)

Explanation

Explanation/Reference:

Reference: https://www.cisco.com/c/en/us/td/docs/solutions/Enterprise/Data_Center/DCI/5-0/LISPmobility/DCI_LISP_Host_Mobility/LISPmobile_2.html

QUESTION 13 Which two protocols are used with YANG data models? (Choose two.)

- A. TLS
- B. RESTCONF
- C. SSH
- D. NETCONF
- E. HTTPS

Correct Answer: BD

Section: (none)

Explanation

Explanation/Reference:

QUESTION 14 Which HTTP status code is the correct response for a request with an incorrect password applied to a REST API session?

- A. HTTP Status Code: 200
- B. HTTP Status Code: 302
- C. HTTP Status Code: 401
- D. HTTP Status Code: 504

Correct Answer: C

Section: (none)

Explanation

Explanation/Reference:

Reference: <https://developer.mozilla.org/en-US/docs/Web/HTTP/Status/401>

QUESTION 15 The login method is configured on the VTY lines of a router with these parameters:

- The first method for authentication is TACACS
- If TACACS is unavailable, login is allowed without any provided credentials

Which configuration accomplishes this task?

```
R1#sh run | include aaa
aaa new-model
aaa authentication login telnet group tacacs+ none
aaa session-id common
```

```
R1#sh run | section vty
line vty 0 4
```

```
R1#sh run | include username
R1#
```

```
R1#sh run | include aaa
aaa new-model
aaa authentication login default group tacacs+
aaa session-id common
```

```
R1#sh run | section vty
line vty 0 4
```

```
transport input none
```

```
R1#
```

```
R1#sh run | include aaa
aaa new-model
aaa authentication login VTY group tacacs+ none
aaa session-id common
```

```
R1#sh run | section vty
line vty 0 4
```

```
password 7 02050D480809
```

```
R1#sh run | include username
R1#
```

A.

B. C.

```
R1#sh run | include aaa
aaa new-model
aaa authentication login default group tacacs+ none
aaa session-id common
```

```
R1#sh run | section vty
line vty 0 4
password 7 02050D480809
```

```
R1#sh run | include username
```

D. R1#

Correct Answer: D

Section: (none)

Explanation

Explanation/Reference:

QUESTION 16 Which statement about multicast RPs is true?

- A. RPs are required only when using protocol independent multicast dense mode.
- B. RPs are required for protocol independent multicast sparse mode and dense mode.
- C. By default, the RP is needed periodically to maintain sessions with sources and receivers.
- D. By default, the RP is needed only to start new sessions with sources and receivers.

Correct Answer: D

Section: (none)

Explanation

Explanation/Reference:

Reference: https://www.cisco.com/c/en/us/td/docs/ios/solutions_docs/ip_multicast/White_papers/rps.html

QUESTION 17

To increase total throughput and redundancy on the links between the wireless controller and switch, the customer enabled LAG on the wireless controller.

Which EtherChannel mode must be configured on the switch to allow the WLC to connect?

- A. Active
- B. Passive
- C. On
- D. Auto

Correct Answer: C

Section: (none)

Explanation

Explanation/Reference:

Reference: <https://community.cisco.com/t5/wireless-mobility-documents/lag-link-aggregation/ta-p/3128669>

QUESTION 18 Which feature does Cisco TrustSec use to provide scalable, secure communication throughout a network?

- A. security group tag ACL assigned to each port on a switch
- B. security group tag number assigned to each user on a switch
- C. security group tag number assigned to each port on a network
- D. security group tag ACL assigned to each router on a network

Correct Answer: B

Section: (none)

Explanation

Explanation/Reference:

Reference: https://www.cisco.com/c/dam/en/us/solutions/collateral/borderless-networks/trustsec/C07-730151-00_overview_of_trustSec_og.pdf

QUESTION 19 An engineer configures a WLAN with fast transition enabled. Some legacy clients fail to connect to this WLAN.

Which feature allows the legacy clients to connect while still allowing other clients to use fast transition based on their OUIs?

- A. over the DS
- B. 802.11k
- C. adaptive R
- D. 802.11v

Correct Answer: C

Section: (none)

Explanation

Explanation/Reference:

QUESTION 20 Which exhibit displays a valid JSON file? A.

```
{
  "hostname": "edge_router_1"
  "interfaces": {
    "GigabitEthernet1/1"
    "GigabitEthernet1/2"
    "GigabitEthernet1/3"
  }
}

{
  "hostname": "edge_router_1",
  "interfaces": {
    "GigabitEthernet1/1",
    "GigabitEthernet1/2",
    "GigabitEthernet1/3",
  },
}

{
  "hostname": "edge_router_1"
  "interfaces": [
    "GigabitEthernet1/1"
    "GigabitEthernet1/2"
    "GigabitEthernet1/3"
  ]
}
```

B. C.

```
{
  "hostname": "edge_router_1",
  "interfaces": [
    "GigabitEthernet1/1",
    "GigabitEthernet1/2",
    "GigabitEthernet1/3"
  ]
}
```

D.

Correct Answer: B

Section: (none)

Explanation

Explanation/Reference:

QUESTION 21

A network administrator is implementing a routing configuration change and enables routing debugs to track routing behavior during the change. The logging output on the terminal is interrupting the command typing process. Which two actions can the network administrator take to minimize the possibility of typing commands incorrectly? (Choose two.)

- A. Configure the **logging synchronous** global configuration command.
- B. Configure the **logging synchronous** command under the vty.
- C. Increase the number of lines on the screen using the **terminal length** command.
- D. Configure the logging delimiter feature.
- E. Press the TAB key to reprint the command in a new line.

Correct Answer: BE

Section: (none)

Explanation

Explanation/Reference:

QUESTION 22 Which two pieces of information are necessary to compute SNR? (Choose two.)

- A. transmit power
- B. noise floor
- C. EIRPD. RSSI
- E. antenna gain

Correct Answer: AB

Section: (none)

Explanation

Explanation/Reference:

Reference: <https://community.cisco.com/t5/wireless-mobility-documents/snr-rssi-eirp-and-free-space-path-loss/ta-p/3128478>

QUESTION 23 Which statements are used for error handling in Python?

- A. try/catch
- B. catch/release
- C. block/rescue
- D. try/except

Correct Answer: D

Section: (none)

Explanation

Explanation/Reference:

QUESTION 24 What are two benefits of virtualizing the server with the use of VMs in a data center environment? (Choose two.)

- A. reduced rack space, power, and cooling requirements
- B. smaller Layer 2 domain
- C. increased security
- D. speedy deployment
- E. reduced IP and MAC address requirements

Correct Answer: AD

Section: (none)

Explanation

Explanation/Reference:

QUESTION 25 Which two steps are required for a complete Cisco DNA Center upgrade? (Choose two.)

- A. automation backup
- B. system update
- C. golden image selection
- D. proxy configuration
- E. application updates

Correct Answer: AB

Section: (none)

Explanation

Explanation/Reference:

QUESTION 26 What is a benefit of data modeling languages like YANG?

- A. They create more secure and efficient SNMP OIDs.
- B. They provide a standardized data structure, which results in configuration scalability and consistency.
- C. They enable programmers to change or write their own applications within the device operating system.
- D. They make the CLI simpler and more efficient.

Correct Answer: B

Section: (none)

Explanation

Explanation/Reference:

QUESTION 27

Refer to the exhibit.

Name is Bob Johnson

Age is 75

Is alive

Favorite foods are:

- Cereal
- Mustard
- Onions

What is the JSON syntax that is formed from the data?

- A. {Name: Bob Johnson, Age: 75, Alive: true, Favorite Foods: [Cereal, Mustard, Onions]}
- B. {"Name": "Bob Johnson", "Age": 75, "Alive": true, "Favorite Foods": ["Cereal", "Mustard", "Onions"]}
- C. {'Name': 'Bob Johnson', 'Age': 75, 'Alive': True, 'Favorite Foods': 'Cereal', 'Mustard', 'Onions'}
- D. {"Name": "Bob Johnson", "Age": Seventyfive, "Alive": true, "Favorite Foods": ["Cereal", "Mustard", "Onions"]}

Correct Answer: B

Section: (none)

Explanation

Explanation/Reference:

QUESTION 28

Based on this interface configuration, what is the expected state of OSPF adjacency?

R1:

```
interface GigabitEthernet0/1
  ip address 192.0.2.1 255.255.255.252
  ip ospf 1 area 0
  ip ospf hello-interval 2
  ip ospf cost 1
end
```

R2:

```
interface GigabitEthernet0/1
  ip address 192.0.2.2 255.255.255.252
  ip ospf 1 area 0
  ip ospf cost 500
end
```

- A. 2WAY/DROTHER on both routers
- B. not established
- C. FULL on both routers
- D. FULL/BDR on R1 and FULL/BDR on R2

Correct Answer: B

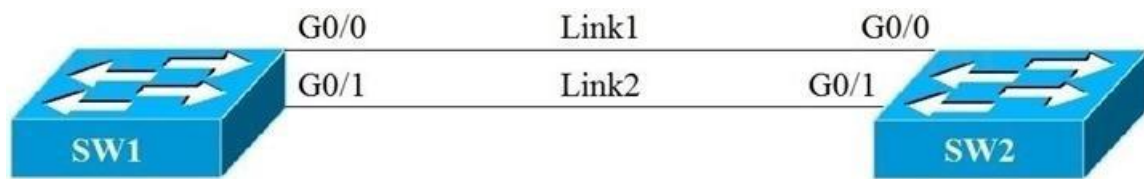
Section: (none)

Explanation

Explanation/Reference:

QUESTION 29

Refer to the exhibit.



SW2#show spanning-tree

```

VLAN0001

  Spanning tree enabled protocol ieee

  Root ID    Priority    32769
            Address     5000.0005.0000
            Cost        4
            Port        1 (GigabitEthernet0/0)
            Hello Time  2 sec  Max Age 20 sec  Forward Delay 15 sec

  Bridge ID   Priority    32769 (priority 32768 sys-id-ext 1)
            Address     5000.0006.0000
            Hello Time  2 sec  Max Age 20 sec  Forward Delay 15 sec
            Aging Time  300 sec

Interface                Role  Sts  Cost  Prio.Nbr  Type
-----
Gi0/0                    Root  FWD   4     128.1    P2p
Gi0/1                    Altn  BLK   4     32.2     P2p
  
```

Link1 is a copper connection and Link2 is a fiber connection. The fiber port must be the primary port for all forwarding. The output of the **show spanning-tree** command on SW2 shows that the fiber port is blocked by spanning tree. An engineer enters the **spanning-tree port-priority 32** command on G0/1 on SW2, but the port remains blocked.

Which command should be entered on the ports that are connected to Link2 to resolve the issue?

- A. Enter **spanning-tree port-priority 4** on SW2.
- B. Enter **spanning-tree port-priority 32** on SW1.
- C. Enter **spanning-tree port-priority 224** on SW1.
- D. Enter **spanning-tree port-priority 64** on SW2.

Correct Answer: B

Section: (none)

Explanation

Explanation/Reference:

QUESTION 30 Which JSON syntax is valid?

- A. {"switch": {"name": "dist1", "interfaces": ["gig1", "gig2", "gig3"]}}
- B. {/"switch/": {/"name/": "dist1", /"interfaces/": ["gig1", "gig2", "gig3"]}}
- C. {"switch": {"name": "dist1", "interfaces": ["gig1", "gig2", "gig3"]}}
- D. {'switch': ('name': 'dist1', 'interfaces': ['gig1', 'gig2', 'gig3'])}

Correct Answer: A

Section: (none)

Explanation

Explanation/Reference:

QUESTION 31 What are two common sources of interference for Wi-Fi networks? (Choose two.)

- A. LED lights
- B. radar
- C. fire alarm
- D. conventional oven
- E. rogue AP

Correct Answer: AE

Section: (none)

Explanation

Explanation/Reference:

QUESTION 32 When using TLS for syslog, which configuration allows for secure and reliable transportation of messages to its default port?

- A. logging host 10.2.3.4 vrf mgmt transport tcp port 514
- B. logging host 10.2.3.4 vrf mgmt transport udp port 514
- C. logging host 10.2.3.4 vrf mgmt transport tcp port 6514
- D. logging host 10.2.3.4 vrf mgmt transport udp port 6514

Correct Answer: C

Section: (none)

Explanation

Explanation/Reference:

Reference: <https://tools.ietf.org/html/rfc5425>

QUESTION 33 Which behavior can be expected when the HSRP version is changed from 1 to 2?

- A. No changes occur because the standby router is upgraded before the active router.
- B. No changes occur because version 1 and 2 use the same virtual MAC OUI.
- C. Each HSRP group reinitializes because the virtual MAC address has changed.
- D. Each HSRP group reinitializes because the multicast address has changed.

Correct Answer: C

Section: (none)

Explanation

Explanation/Reference:

QUESTION 34 Which protocol does REST API rely on to secure the communication channel?

- A. HTTP
- B. SSH
- C. HTTPS
- D. TCP

Correct Answer: C

Section: (none)

Explanation

Explanation/Reference:

QUESTION 35

Refer to this output.

R1# *Feb 14 37:09:53.129: %LINEPROTO-5-UPDOWN: Line protocol on Interface GigabitEthernet0/1, changed state to up

What is the logging severity level?

- A. notification
- B. emergency
- C. critical
- D. alert

Correct Answer: A

Section: (none)

Explanation

Explanation/Reference:

QUESTION 36

Refer to the exhibit.

R1#show ip bgp

BGP table version is 32, local router ID is 192.168.101.5

Status codes: S suppressed, d damped, h history, *valid, > best, i - internal,
r RIB-failure, S Stale, m multipath, b backup-path, f RT-Filter,
x best-external, a additional-path, c RIB-compressed,

Origin codes: i - IGP, e - EGP, ? - incomplete

RPKI validation codes: V valid, I invalid, N Not found

	Network	Next Hop	Metric	LocPrf	Weight	Path
*	192.168.102.0	192.168.101.18	80		0	64517i
*		192.168.101.14	80	80	0	64516i
*		192.168.101.10			0	64515 64515i
*>		192.168.101.2			32768	64513i
*		192.168.101.6		80	0	64514 64514i

Which IP address becomes the active next hop for 192.168.102.0/24 when 192.168.101.2 fails?

- A. 192.168.101.10
- B. 192.168.101.14
- C. 192.168.101.6
- D. 192.168.101.18

Correct Answer: D

Section: (none)

Explanation

Explanation/Reference:

QUESTION 37

Which PAgP mode combination prevents an EtherChannel from forming?

- A. auto/desirable
- B. desirable/desirable
- C. desirable/auto
- D. auto/auto

Correct Answer: D

Section: (none)

Explanation

Explanation/Reference:

Reference: <https://www.omniseu.com/cisco-certified-network-associate-ccna/etherchannel-pagp-and-lacp-modes.php>

QUESTION 38 If a VRRP master router fails, which router is selected as the new master router?

- A. router with the lowest priority
- B. router with the highest priority
- C. router with the highest loopback address
- D. router with the lowest loopback address

Correct Answer: B

Section: (none)

Explanation

Explanation/Reference:

QUESTION 39 Which QoS component alters a packet to change the way that traffic is treated in the network?

- A. policing
- B. classification
- C. marking
- D. shaping

Correct Answer: C

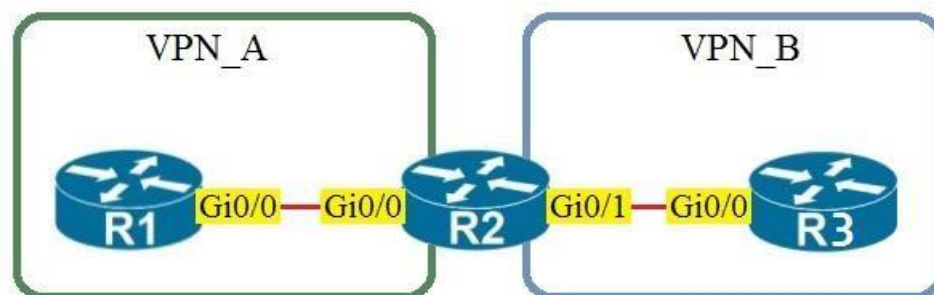
Section: (none)

Explanation

Explanation/Reference:

QUESTION 40

Refer to the exhibit.



Assuming that R1 is a CE router, which VRF is assigned to Gi0/0 on R1?

- A. default VRF
- B. VRF VPN_AC. VRF VPN_B
- D. management VRF

Correct Answer: A

Section: (none)

Explanation

Explanation/Reference:

QUESTION 41

Refer to the exhibit.

The screenshot shows the WLAN security configuration interface. The 'General' tab is selected, and the 'Layer 2' sub-tab is active. The configuration includes the following settings:

- Fast Transition:** Unchecked.
- Protected Management Frame:** PMF is set to 'Disabled'.
- WPA+WPA2 Parameters:** 'WPA Policy' is unchecked, and 'WPA2 Policy-AES' is checked.
- Authentication Key Management:**
 - 802.1X: Unchecked
 - CCKM: Unchecked
 - PSK: Checked
 - FT 802.1X: Unchecked
 - FT PSK: Unchecked
 - PSK Format: ASCII

Based on the configuration in this WLAN security setting, which method can a client use to authenticate to the network?

- A. text string
- B. username and password
- C. RADIUS token
- D. certificate

Correct Answer: A

Section: (none)

Explanation

Explanation/Reference:

QUESTION 42 Which two mechanisms are available to secure NTP? (Choose two.)

- A. IPsec
- B. IP prefix list-based
- C. encrypted authentication
- D. TACACS-based authentication
- E. IP access list-based

Correct Answer: CE

Section: (none)

Explanation

Explanation/Reference:

Reference: <https://www.cisco.com/c/dam/en/us/td/docs/ios-xml/ios/bsm/configuration/xr-3se/3650/bsm-xr-3se-3650-book.html>

QUESTION 43

Which technology provides a secure communication channel for all traffic at Layer 2 of the OSI model?

- A. SSL
- B. Cisco TrustSec
- C. MACsec
- D. IPsec

Correct Answer: C

Section: (none)

Explanation

Explanation/Reference:

QUESTION 44

Refer to the exhibit.

```
Extended IP access list EGRESS
10 permit ip 10.0.0.0 0.0.0.255 any
!
<Output Omitted>
!
interface GigabitEthernet0/0
ip address 209.165.200.225 255.255.255.0
ip access-group EGRESS out
duplex auto
speed auto
media-type rj45
!
```

VCEUp

An engineer must block all traffic from a router to its directly connected subnet 209.165.200.0/24. The engineer applies access control list EGRESS in the outbound direction on the GigabitEthernet0/0 interface of the router. However, the router can still ping hosts on the 209.165.200.0/24 subnet.

Which explanation of this behavior is true?

- A. Access control lists that are applied outbound to a router interface do not affect traffic that is sourced from the router.
- B. After an access control list is applied to an interface, that interface must be shut and no shut for the access control list to take effect.
- C. Only standard access control lists can block traffic from a source IP address.
- D. The access control list must contain an explicit deny to block traffic from the router.

Correct Answer: A

Section: (none)

Explanation

Explanation/Reference:

QUESTION 45

Which two methods are used by an AP that is trying to discover a wireless LAN controller? (Choose two.)

- A. Cisco Discovery Protocol neighbor
- B. querying other APs
- C. DHCP Option 43
- D. broadcasting on the local subnet
- E. DNS lookup CISCO-DNA-PRIMARY.localdomain

Correct Answer: CD

Section: (none)

Explanation

Explanation/Reference:

Reference: <https://www.cisco.com/c/en/us/support/docs/wireless/5500-series-wireless-controllers/119286-lap-notjoin-wlc-tshoot.html#backinfo>

QUESTION 46 Which IP SLA operation requires the IP SLA responder to be configured on the remote end?

- A. UDP jitter
- B. ICMP jitter
- C. TCP connect
- D. ICMP echo

Correct Answer: A

Section: (none)

Explanation

Explanation/Reference:

Reference: <https://www.cisco.com/c/en/us/td/docs/switches/lan/catalyst4500/12-2/46sg/configuration/guide/Wrapper-46SG/swipsla.pdf>

QUESTION 47

Which statement explains why Type 1 hypervisor is considered more efficient than Type2 hypervisor?

- A. Type 1 hypervisor is the only type of hypervisor that supports hardware acceleration techniques.
- B. Type 1 hypervisor relies on the existing OS of the host machine to access CPU, memory, storage, and network resources.
- C. Type 1 hypervisor runs directly on the physical hardware of the host machine without relying on the underlying OS.
- D. Type 1 hypervisor enables other operating systems to run on it.

Correct Answer: C

Section: (none)

Explanation

Explanation/Reference:

QUESTION 48

A client with IP address 209.165.201.25 must access a web server on port 80 at 209.165.200.225. To allow this traffic, an engineer must add a statement to an access control list that is applied in the inbound direction on the port connecting to the web server.

Which statement allows this traffic?

- A. permit tcp host 209.165.200.225 lt 80 host 209.165.201.25
- B. permit tcp host 209.165.201.25 host 209.165.200.225 eq 80
- C. permit tcp host 209.165.200.225 eq 80 host 209.165.201.25
- D. permit tcp host 209.165.200.225 host 209.165.201.25 eq 80

Correct Answer: D

Section: (none)

Explanation

Explanation/Reference:

QUESTION 49 In OSPF, which LSA type is responsible for pointing to the ASBR router?

- A. type 1
- B. type 2
- C. type 3
- D. type 4

Correct Answer: D

Section: (none)

Explanation

Explanation/Reference:

QUESTION 50

Refer to the exhibit.



VLANs 50 and 60 exist on the trunk links between all switches. All access ports on SW3 are configured for VLAN 50 and SW1 is the VTP server.

Which command ensures that SW3 receives frames only from VLAN 50?

- A. SW1(config)#vtp mode transparent
- B. SW3(config)#vtp mode transparent
- C. SW2(config)#vtp pruning
- D. SW1(config)#vtp pruning

Correct Answer: D

Section: (none)

Explanation

Explanation/Reference:

Reference: <https://www.orbit-computer-solutions.com/vtp-pruning/>

QUESTION 51 Which statement about a fabric access point is true?

- A. It is in local mode and must be connected directly to the fabric edge switch.
- B. It is in local mode and must be connected directly to the fabric border node.
- C. It is in FlexConnect mode and must be connected directly to the fabric border node.
- D. It is in FlexConnect mode and must be connected directly to the fabric edge switch.

Correct Answer: A

Section: (none)

Explanation

Explanation/Reference:

Reference: <https://www.cisco.com/c/en/us/td/docs/solutions/CVD/Campus/sda-sdg-2019oct.html>

QUESTION 52

Which First Hop Redundancy Protocol maximizes uplink utilization and minimizes the amount of configuration that is necessary?

- A. GLBP
- B. HSRP v2C. VRRP
- D. HSRP v1

Correct Answer: A

Section: (none)

Explanation

Explanation/Reference:

QUESTION 53 Which standard access control entry permits traffic from odd-numbered hosts in the 10.0.0.0/24 subnet?

- A. permit 10.0.0.0 0.0.0.1
- B. permit 10.0.0.1 0.0.0.254
- C. permit 10.0.0.1 0.0.0.0
- D. permit 10.0.0.0 255.255.255.254

Correct Answer: B

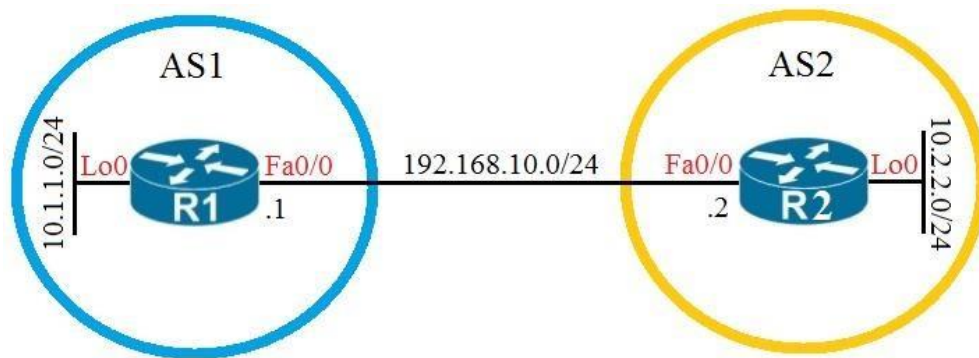
Section: (none)

Explanation

Explanation/Reference:

QUESTION 54

Refer to the exhibit.



Which configuration establishes EBGP neighborship between these two directly connected neighbors and exchanges the loopback network of the two routers through BGP?

- A. R1(config)#**router bgp 1**
R1(config-router)#**neighbor 192.168.10.2 remote-as 2**
R1(config-router)#**network 10.1.1.0 mask 255.255.255.0**

R2(config)#**router bgp 2**
R2(config-router)#**neighbor 192.168.10.1 remote-as 1**
R2(config-router)#**network 10.2.2.0 mask 255.255.255.0**
- B. R1(config)#**router bgp 1**
R1(config-router)#**neighbor 10.2.2.2 remote-as 2**
R1(config-router)#**network 10.1.1.0 mask 255.255.255.0**

R2(config)#**router bgp 2**
R2(config-router)#**neighbor 10.1.1.1 remote-as 1**
R2(config-router)#**network 10.2.2.0 mask 255.255.255.0**
- C. R1(config)#**router bgp 1**
R1(config-router)#**neighbor 192.168.10.2 remote-as 2**
R1(config-router)#**network 10.0.0.0 mask 255.0.0.0**

R2(config)#**router bgp 2**
R2(config-router)#**neighbor 192.168.10.1 remote-as 1**
R2(config-router)#**network 10.0.0.0 mask 255.0.0.0**
- D. R1(config)#**router bgp 1**
R1(config-router)#**neighbor 10.2.2.2 remote-as 2**
R1(config-router)#**neighbor 10.2.2.2 update-source lo0**
R1(config-router)#**network 10.1.1.0 mask 255.255.255.0**

R2(config)#**router bgp 2**

```
R2(config-router)#neighbor 10.1.1.1 remote-as 1
R2(config-router)#neighbor 10.1.1.1 update-source lo0
R2(config-router)#network 10.2.2.0 mask 255.255.255.0
```

Correct Answer: A

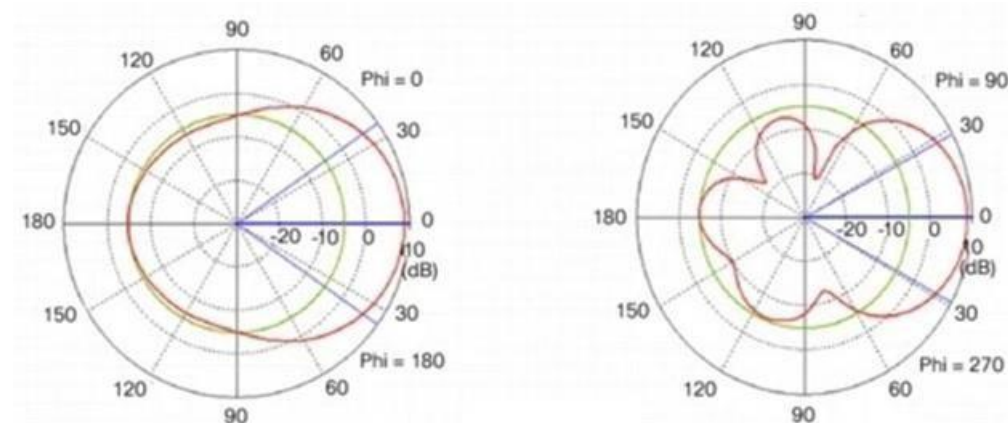
Section: (none)

Explanation

Explanation/Reference:

QUESTION 55

Refer to the exhibit.



Antenna Azimuth
Plane Pattern

Antenna Elevation
Plane Pattern

VCEup

Which type of antenna do the radiation patterns present?

- A. Yagi
- B. patch
- C. omnidirectional
- D. dipole

Correct Answer: B

Section: (none)

Explanation

Explanation/Reference:

Reference: https://www.cisco.com/c/en/us/products/collateral/wireless/aironet-antennas-accessories/prod_white_paper0900aecd806a1a3e.html **QUESTION 56** Which method creates an EEM applet policy that is registered with EEM and runs on demand or manually?

- A. event manager applet ondemand
event none
action 1.0 syslog priority critical msg 'This is a message from ondemand'
- B. event manager applet ondemand action 1.0 syslog priority critical msg
'This is a message from ondemand'
- C. event manager applet ondemand
event register
action 1.0 syslog priority critical msg 'This is a message from ondemand'
- D. event manager applet ondemand event manual action 1.0 syslog priority
critical msg 'This is a message from ondemand'

Correct Answer: A

Section: (none)

Explanation

Explanation/Reference:**QUESTION 57**

An engineer is configuring local web authentication on a WLAN. The engineer chooses the Authentication radio button under the Layer 3 Security options for Web Policy.

Which device presents the web authentication for the WLAN?

- A. ISE server
- B. RADIUS server
- C. anchor WLC
- D. local WLC

Correct Answer: D

Section: (none)

Explanation

Explanation/Reference:

QUESTION 58 Which controller is the single plane of management for Cisco SD-WAN?

- A. vBond
- B. vSmart
- C. vManage
- D. vEdge

Correct Answer: C

Section: (none)

Explanation

Explanation/Reference:

Reference: <https://www.cisco.com/c/dam/en/us/td/docs/solutions/CVD/SDWAN/CVD-SD-WAN-Design-2018OCT.pdf>

QUESTION 59 A network is being migrated from IPv4 to IPv6 using a dual-stack approach. Network management is already 100% IPv6 enabled.

In a dual-stack network with two dual-stack NetFlow collectors, how many flow exporters are needed per network device in the flexible NetFlow configuration?

- A. 1
- B. 2
- C. 4
- D. 8

Correct Answer: B

Section: (none)

Explanation

Explanation/Reference:**QUESTION 60**

DRAG DROP

Drag and drop the descriptions from the left onto the correct QoS components on the right.

Select and Place:

Answer Area

- causes TCP retransmissions when traffic is dropped
- buffers excessive traffic
- introduces no delay and jitter
- introduces delay and jitter
- drops excessive traffic
- typically delays, rather than drops traffic

Traffic Policing

-
-
-

Traffic Shaping

-
-
-

Correct Answer:**Answer Area**

- causes TCP retransmissions when traffic is dropped
- buffers excessive traffic
- introduces no delay and jitter
- introduces delay and jitter
- drops excessive traffic
- typically delays, rather than drops traffic

Traffic Policing

- causes TCP retransmissions when traffic is dropped
- introduces delay and jitter
- drops excessive traffic

Traffic Shaping

- buffers excessive traffic
- introduces no delay and jitter
- typically delays, rather than drops traffic

Section: (none)**Explanation****Explanation/Reference:**

QUESTION 61 Which statement about TLS is accurate when using RESTCONF to write configurations on network devices?

- A. It is used for HTTP and HTTPS requests.
- B. It requires certificates for authentication.
- C. It is provided using NGINX acting as a proxy web server.
- D. It is not supported on Cisco devices.

Correct Answer: C

Section: (none)

Explanation

Explanation/Reference:

Reference: https://www.cisco.com/c/en/us/td/docs/ios-xml/ios/prog/configuration/166/b_166_programmability_cg/b_166_programmability_cg_chapter_01011.html

QUESTION 62

Which reason could cause an OSPF neighborship to be in the EXSTART/EXCHANGE state?

- A. mismatched OSPF link costs
- B. mismatched OSPF network type
- C. mismatched areas
- D. mismatched MTU size

Correct Answer: D

Section: (none)

Explanation

Explanation/Reference:

Reference: <https://www.cisco.com/c/en/us/support/docs/ip/open-shortest-path-first-ospf/13684-12.html#neighbors>

QUESTION 63

Which LISP device is responsible for publishing EID-to-RLOC mappings for a site?

- A. ETR
- B. MR
- C. ITR
- D. MS

Correct Answer: A

Section: (none)

Explanation

Explanation/Reference:

Reference: https://www.cisco.com/c/en/us/products/collateral/ios-nx-os-software/locator-id-separation-protocol-lisp/white_paper_c11-652502.html

QUESTION 64 Which method does the enable secret password option use to encrypt device passwords?

- A. MD5
- B. PAP
- C. CHAP
- D. AES

Correct Answer: A

Section: (none)

Explanation

Explanation/Reference:

Reference: <https://www.cisco.com/c/en/us/support/docs/security/vpn/remote-authentication-dial-user-service-radius/107614-64.html>

QUESTION 65 How do agent-based versus agentless configuration management tools compare?

- A. Agentless tools use proxy nodes to interface with slave nodes.
- B. Agentless tools require no messaging systems between master and slaves.
- C. Agent-based tools do not require a high-level language interpreter such as Python or Ruby on slave nodes.
- D. Agent-based tools do not require installation of additional software packages on the slave nodes.

Correct Answer: B

Section: (none)

Explanation

Explanation/Reference:

QUESTION 66 Which statement about Cisco Express

Forwarding is true?

- A. The CPU of a router becomes directly involved with packet-switching decisions.
- B. It uses a fast cache that is maintained in a router data plane.
- C. It maintains two tables in the data plane: the FIB and adjacency table.
- D. It makes forwarding decisions by a process that is scheduled through the IOS scheduler.

Correct Answer: C

Section: (none)

Explanation

Explanation/Reference:

QUESTION 67

Refer to the exhibit.

```
access-list 1 permit 10.1.1.0 0.0.0.31
ip nat pool CISCO 209.165.201.1 209.165.201.30 netmask 255.255.255.224
ip nat inside source list 1 pool CISCO
```

What are two effects of this configuration? (Choose two.)

- A. It establishes a one-to-one NAT translation.
- B. The 209.165.201.0/27 subnet is assigned as the outside local address range.
- C. The 10.1.1.0/27 subnet is assigned as the inside local addresses.
- D. Inside source addresses are translated to the 209.165.201.0/27 subnet.
- E. The 10.1.1.0/27 subnet is assigned as the inside global address range.

Correct Answer: CD

Section: (none)

Explanation

Explanation/Reference:

QUESTION 68 When configuring WPA2 Enterprise on a WLAN, which additional security component configuration is required?

- A. PKI server
- B. NTP server
- C. RADIUS server
- D. TACACS server

Correct Answer: C

Section: (none)

Explanation

Explanation/Reference:

Reference: <https://www.cisco.com/c/en/us/support/docs/wireless/4400-series-wireless-lan-controllers/100708-wpa-wn-config.html#conf>

QUESTION 69 What is the structure of a JSON web token?

- A. three parts separated by dots: header, payload, and signature
- B. three parts separated by dots: version, header, and signature
- C. header and payload
- D. payload and signature

Correct Answer: A

Section: (none)

Explanation

Explanation/Reference:

Reference: <https://auth0.com/docs/tokens/references/jwt-structure>

QUESTION 70 A response code of 404 is received while using the REST API on Cisco DNA Center to POST to this URI:

/dna/intent/api/v1/template-programmer/project

What does the code mean?

- A. The POST/PUT request was fulfilled and a new resource was created. Information about the resource is in the response body.
- B. The request was accepted for processing, but the processing was not completed.
- C. The client made a request for a resource that does not exist.
- D. The server has not implemented the functionality that is needed to fulfill the request.

Correct Answer: C

Section: (none)

Explanation

Explanation/Reference:

Reference: https://www.cisco.com/c/en/us/td/docs/cloud-systems-management/application-policy-infrastructure-controller-enterprise-module/1-2-x/config-guide/b_apic-em_config_guide_v_1-2-x/b_apic-em_config_guide_v_1-2x_chapter_01001.html

QUESTION 71 What is a benefit of deploying an on-premises infrastructure versus a cloud infrastructure deployment?

- A. ability to quickly increase compute power without the need to install additional hardware
- B. less power and cooling resources needed to run infrastructure on-premises
- C. faster deployment times because additional infrastructure does not need to be purchased
- D. lower latency between systems that are physically located near each other

Correct Answer: D

Section: (none)

Explanation

Explanation/Reference:

QUESTION 72

A customer has several small branches and wants to deploy a Wi-Fi solution with local management using CAPWAP.

Which deployment model meets this requirement?

- A. local mode
- B. autonomous
- C. SD-Access wireless
- D. Mobility Express

Correct Answer: D

Section: (none)

Explanation

Explanation/Reference:

QUESTION 73 Which two operations are valid for RESTCONF? (Choose two.)

- A. PULL
- B. PUSH
- C. PATCH
- D. REMOVE
- E. ADD
- F. HEAD

Correct Answer: CF

Section: (none)

Explanation

Explanation/Reference:

Reference: https://www.cisco.com/c/en/us/td/docs/ios-xml/ios/prog/configuration/166/b_166_programmability_cg/b_166_programmability_cg_chapter_01011.html

QUESTION 74

Refer to the exhibit.

Clients > Detail		< Back Apply Link Test Remove	
Client Properties		AP Properties	
MAC Address	00:09:ef:0G:07:bd	AP Address	3c:ce:73:1b:33:39
IP Address	192.100.101.100	AP Name	172.22.253.20
Client Type	Regular	AP Type	Mobile
User Name		WLAN Profile	Staff
Port Number	29	Status	Associated
Interface	Staff	Association ID	0
VLAN ID	3602	802.11 Authentication	Open System
CCX Version	Not Supported	Reason Code	1
E2E Version	Not Supported	Status Code	0
Mobility Role	Anchor	CF Pollable	Not Implemented
Mobility Peer IP Address	172.22.253.20.	CF Poll Request	Not Implemented
Policy Manager State	RUN	Short Preamble	Implemented
Management Frame Protection	No	PBCC	Not Implemented
UpTime (Sec)	3710	Channel Agility	Not Implemented
Power Save Mode	OFF	Timeout	0
Current TxRateSet		WEP State	WEP Enable
Data RateSet	5.5,11.0,6.0,9.0,12.0,19.0,24.0,36.0,40.0,54.0		

The WLC administrator sees that the controller to which a roaming client associates has Mobility Role Anchor configured under Clients > Detail.

Which type of roaming is supported?

- A. indirect
- B. Layer 3 intercontroller

- C. intracontroller
- D. Layer 2 intercontroller

Correct Answer: D

Section: (none)

Explanation

Explanation/Reference:

QUESTION 75 In which part of the HTTP message is the content type specified?

- A. HTTP method
- B. body
- C. header
- D. URI

Correct Answer: C

Section: (none)

Explanation

Explanation/Reference:

Reference: <https://developer.mozilla.org/en-US/docs/Web/HTTP/Headers/Content-Type>

QUESTION 76 Which statement about VXLAN is true?

- A. VXLAN encapsulates a Layer 2 frame in an IP-UDP header, which allows Layer 2 adjacency across router boundaries.
- B. VXLAN uses the Spanning Tree Protocol for loop prevention.
- C. VXLAN extends the Layer 2 Segment ID field to 24-bits, which allows up to 4094 unique Layer 2 segments over the same network.
- D. VXLAN uses TCP as the transport protocol over the physical data center network.

Correct Answer: A

Section: (none)

Explanation

Explanation/Reference:

QUESTION 77

DRAG DROP

Drag and drop the characteristics from the left onto the correct infrastructure deployment types on the right.

Select and Place:

Answer Area

customizable hardware, purpose-built systems
easy to scale and upgrade
more suitable for companies with specific regulatory or security requirements
resources can be over or underutilized as requirements vary
requires a strong and stable internet connection
built-in, automated data backups and recovery

On Premises

Cloud

Correct Answer:**Answer Area**

customizable hardware, purpose-built systems
easy to scale and upgrade
more suitable for companies with specific regulatory or security requirements
resources can be over or underutilized as requirements vary
requires a strong and stable internet connection
built-in, automated data backups and recovery

On Premises

customizable hardware, purpose-built systems
more suitable for companies with specific regulatory or security requirements
resources can be over or underutilized as requirements vary

Cloud

easy to scale and upgrade
requires a strong and stable internet connection
built-in, automated data backups and recovery

Section: (none)**Explanation****Explanation/Reference:**

QUESTION 78 What is a fact about Cisco EAP-FAST?

A. It requires a client certificate.

- B. It is an IETF standard.
- C. It does not require a RADIUS server certificate.
- D. It operates in transparent mode.

Correct Answer: C

Section: (none)

Explanation

Explanation/Reference:

Reference: <https://www.cisco.com/c/en/us/support/docs/wireless/4400-series-wireless-lan-controllers/99791-eapfast-wlc-rad-config.html>

QUESTION 79

What do Cisco DNA southbound APIs provide?

- A. interface between the controller and the consumer
- B. RESTful API interface for orchestrator communication
- C. interface between the controller and the network devices
- D. NETCONF API interface for orchestrator communication

Correct Answer: C

Section: (none)

Explanation

Explanation/Reference:

QUESTION 80

Which DNS lookup does an access point perform when attempting CAPWAP discovery?

- A. CISCO-CONTROLLER.local
- B. CAPWAP-CONTROLLER.local
- C. CISCO-CAPWAP-CONTROLLER.local
- D. CISCO-DNA-CONTROLLER.local

Correct Answer: C

Section: (none)

Explanation

Explanation/Reference:

Reference: http://www.revolutionwifi.net/revolutionwifi/2010/11/capwap-controller-discovery-process_23.html

QUESTION 81 Which TCP setting is tuned to minimize the risk of fragmentation on a GRE/IP tunnel?

- A. MSS
- B. MTU
- C. MRU
- D. window size

Correct Answer: A

Section: (none)

Explanation

Explanation/Reference:

QUESTION 82

DRAG DROP

Drag and drop the characteristics from the left onto the correct routing protocol types on the right.

Select and Place:

Answer Area

supports unequal path load balancing

link state routing protocol

distance vector routing protocol

metric based on delay and bandwidth by default

makes it easy to segment the network logically

constructs three tables as part of its operation:
neighbor table, topology table, and routing table

OSPF

EIGRP

Correct Answer:

Answer Area

supports unequal path load balancing

link state routing protocol

distance vector routing protocol

metric based on delay and bandwidth by default

makes it easy to segment the network logically

constructs three tables as part of its operation:
neighbor table, topology table, and routing table

OSPF

link state routing protocol

makes it easy to segment the network logically

constructs three tables as part of its operation:
neighbor table, topology table, and routing table

EIGRP

supports unequal path load balancing

distance vector routing protocol

metric based on delay and bandwidth by default

Section: (none)
Explanation

Explanation/Reference:

QUESTION 83

Which statement about an RSPAN session configuration is true?

- A. Only one session can be configured at a time.
- B. A special VLAN type must be used as the RSPAN destination.
- C. A filter must be configured for RSPAN sessions.
- D. Only incoming traffic can be monitored.

Correct Answer: B

Section: (none)

Explanation

Explanation/Reference:

QUESTION 84

Refer to the exhibit.

Extended IP access list EGRESS

10 permit ip 10.1.100.0 0.0.0.255 10.1.2.0 0.0.0.255

20 deny ip any any

An engineer must modify the access control list EGRESS to allow all IP traffic from subnet 10.1.10.0/24 to 10.1.2.0/24. The access control list is applied in the outbound direction on router interface GigabitEthernet 0/1.

Which configuration command set will allow this traffic without disrupting existing traffic flows? A.

```
config t
ip access-list extended EGRESS
permit ip 10.1.10.0 255.255.255.0 10.1.2.0 255.255.255.0
```

```
config t
ip access-list extended EGRESS2
permit ip 10.1.10.0 0.0.0.255 10.1.2.0 0.0.0.255
permit ip 10.1.100.0 0.0.0.255 10.1.2.0 0.0.0.255
deny ip any any
!
interface g0/1
no ip access-group EGRESS out
ip access-group EGRESS2 out
```

```
config t
ip access-list extended EGRESS
permit ip 10.1.10.0 0.0.0.255 10.1.2.0 0.0.0.255
```

```
config t
ip access-list extended EGRESS
5 permit ip 10.1.10.0 0.0.0.255 10.1.2.0 0.0.0.255
```

B.

C.

D.

Correct Answer: D

Section: (none)

Explanation

Explanation/Reference:

QUESTION 85 What is the role of a fusion router in an SD-Access solution?

- A. acts as a DNS server
- B. provides additional forwarding capacity to the fabric
- C. performs route leaking between user-defined virtual networks and shared services
- D. provides connectivity to external networks

Correct Answer: C

Section: (none)

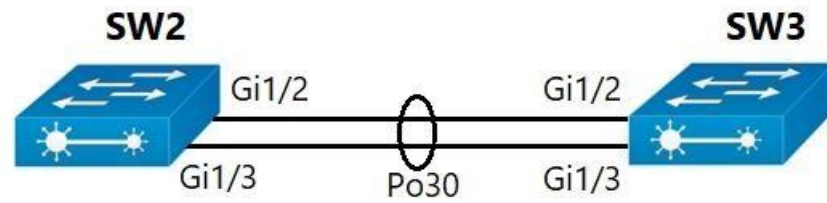
Explanation

Explanation/Reference:

Reference: <https://www.cisco.com/c/en/us/support/docs/cloud-systems-management/dna-center/213525-sda-steps-to-configure-fusion-router.html#anc1>

QUESTION 86

Refer to the exhibit.



```

Interface gi1/2
Channel-group 30 mode desirable
Port-channel load-balance src-ip

Interface gi1/3
Channel-group 30 mode desirable
Port-channel load-balance src-ip

Interface PortChannel 30
Switchport mode trunk
Switchport encapsulation dot1q
Switchport trunk allowed vlan 10-100
  
```

A port channel is configured between SW2 and SW3. SW2 is not running a Cisco operating system. When all physical connections are made, the port channel does not establish.

Based on the configuration excerpt of SW3, what is the cause of the problem?

- A. The port-channel mode should be set to auto.
- B. The port channel on SW2 is using an incompatible protocol.
- C. The port-channel trunk is not allowing the native VLAN.
- D. The port-channel interface load balance should be set to src-mac.

Correct Answer: B

Section: (none)

Explanation

Explanation/Reference:

QUESTION 87 What does this EEM applet event accomplish?

```
"event snmp oid 1.3.6.1.3.7.6.5.3.9.3.8.7 get-type next entry-op gt entry-val 75 poll-interval 5"
```

- A. Upon the value reaching 75%, a SNMP event is generated and sent to the trap server.
- B. It reads an SNMP variable, and when the value exceeds 75%, it triggers an action.
- C. It issues email when the value is greater than 75% for five polling cycles.
- D. It presents a SNMP variable that can be interrogated.

Correct Answer: B

Section: (none)

Explanation

Explanation/Reference:

QUESTION 88 Which method displays text directly into the active console with a synchronous EEM applet policy?

- A. event manager applet boom
event syslog pattern 'UP'
action 1.0 syslog priority direct msg 'logging directly to console'
- B. event manager applet boom event syslog pattern 'UP' action
1.0 gets 'logging directly to console' C. event manager applet
boom event syslog pattern 'UP' action 1.0 string 'logging directly
to console' D. event manager applet boom event syslog pattern
'UP' action 1.0 puts 'logging directly to console'

Correct Answer: B

Section: (none)

Explanation

Explanation/Reference:

Reference: <https://www.cisco.com/c/en/us/td/docs/ios-xml/ios/eem/configuration/xe-3s/eem-xe-3s-book/eem-policy-cli.html>

QUESTION 89 Which two GRE features are configured to prevent fragmentation? (Choose two.)

- A. TCP window size
- B. IP MTU
- C. TCP MSS
- D. DF bit clear
- E. MTU ignore

Correct Answer: BC

Section: (none)

Explanation

Explanation/Reference:

Reference: <https://www.cisco.com/c/en/us/support/docs/ip/generic-routing-encapsulation-gre/25885-pmtud-ipfrag.html> **QUESTION 90** Which action is the vSmart controller responsible for in an SD-WAN deployment?

- A. onboard vEdge nodes into the SD-WAN fabric
- B. gather telemetry data from vEdge routers
- C. distribute security information for tunnel establishment between vEdge routers
- D. manage, maintain, and gather configuration and status for nodes within the SD-WAN fabric

Correct Answer: C

Section: (none)

Explanation

Explanation/Reference:

QUESTION 91 What is one fact about Cisco SD-Access wireless network infrastructure deployments?

- A. The access point is part of the fabric overlay.
- B. The wireless client is part of the fabric overlay.
- C. The access point is part of the fabric underlay.
- D. The WLC is part of the fabric underlay.

Correct Answer: A

Section: (none)

Explanation

Explanation/Reference:

QUESTION 92 Which feature is supported by EIGRP but is not supported by OSPF?

- A. route filtering
- B. unequal-cost load balancing
- C. route summarization
- D. equal-cost load balancing

Correct Answer: B

Section: (none)

Explanation

Explanation/Reference:

QUESTION 93 What is the correct EGP path attribute list, ordered from most preferred to least preferred, that the BGP best-path algorithm uses?

- A. local preference, weight, AS path, MED
- B. weight, local preference, AS path, MED
- C. weight, AS path, local preference, MED
- D. local preference, weight, MED, AS path

Correct Answer: B

Section: (none)

Explanation

Explanation/Reference:

QUESTION 94 At which layer does Cisco DNA Center support REST controls?

- A. session layer
- B. northbound APIs
- C. EEM applets or scripts
- D. YAML output from responses to API calls

Correct Answer: B

Section: (none)

Explanation

Explanation/Reference:

QUESTION 95 On which protocol or technology is the fabric data plane based in Cisco SD-Access fabric?

- A. VXLAN
- B. LISP
- C. Cisco TrustSec
- D. IS-IS

Correct Answer: A

Section: (none)

Explanation

Explanation/Reference:

QUESTION 96 What is the difference between the enable password and the enable secret password when service password encryption is enabled on an IOS device?

- A. The enable secret password is protected via stronger cryptography mechanisms.
- B. The enable password cannot be decrypted.
- C. The enable password is encrypted with a stronger encryption method.
- D. There is no difference and both passwords are encrypted identically.

Correct Answer: A

Section: (none)

Explanation

Explanation/Reference:

QUESTION 97 Which access control list allows only TCP traffic with a destination port range of 22-443, excluding port 80?

- A. deny tcp any any eq 80 permit
tcp any any gt 21 lt 444
- B. permit tcp any any range 22
443 deny tcp any any eq 80
- C. permit tcp any any ne 80 D. deny
tcp any any ne 80 permit tcp
any any range 22 443

Correct Answer: A

Section: (none)

Explanation

Explanation/Reference:

QUESTION 98 Which statement describes the IP and MAC allocation requirements for virtual machines on Type 1 hypervisors?

- A. Virtual machines do not require a unique IP or unique MAC. They share the IP and MAC address of the physical server.
- B. Each virtual machine requires a unique IP address but shares the MAC address with the physical server.
- C. Each virtual machine requires a unique IP and MAC addresses to be able to reach to other nodes.
- D. Each virtual machine requires a unique MAC address but shares the IP address with the physical server.

Correct Answer: C

Section: (none)

Explanation

Explanation/Reference:

QUESTION 99 A local router shows an EBGP neighbor in the Active state.

Which statement is true about the local router?

- A. The local router is attempting to open a TCP session with the neighboring router.
- B. The local router is receiving prefixes from the neighboring router and adding them in RIB-IN.
- C. The local router has active prefixes in the forwarding table from the neighboring router.
- D. The local router has BGP passive mode configured for the neighboring router.

Correct Answer: A

Section: (none)

Explanation

Explanation/Reference:

QUESTION 100 Which feature must be configured to allow packet capture over Layer 3 infrastructure?

- A. RSPAN
- B. ERSPAN
- C. VSPAN
- D. IPSPAN

Correct Answer: B

Section: (none)

Explanation

Explanation/Reference:

Reference: <https://community.cisco.com/t5/networking-documents/understanding-span-rspan-and-erspan/ta-p/3144951>

QUESTION 101

Refer to the exhibit.


```

SwitchC#show vtp status
VTP Version                : 2
Configuration Revision      : 0
Maximum VLANs supported locally : 255
Number of existing VLANs    : 8
VTP Operating Mode          : Transparent
VTP Domain Name             : cisco.com
VTP Pruning Mode            : Disabled
VTP V2 Mode                 : Disabled
VTP Traps Generation        : Disabled
MDS digest                  : 0xES 0x28 0x5D 0x3E 0x2F 0xES 0xAD 0x2B
Configuration last modified by 0.0.0.0 at 1-10-19 09:01:38

SwitchC#show vlan brief

VLAN  Name                Status  Ports
-----
1      default              active  Fa0/3, Fa0/4, Fa0/5, Fa0/6,
                                Fa0/7, Fa0/8, Fa0/9, Fa0/10,
                                Fa0/11, Fa0/12, Fa0/13, Fa0/14,
                                Fa0/15, Fa0/16, Fa0/17, Fa0/18,
                                Fa0/19, Fa0/20, Fa0/21, Fa0/22,
                                Fa0/23, Fa0/24, Po1
110    Finance              active
210    HR                   active  Fa0/1
310    Sales                active  Fa0/2
[...output omitted...]

SwitchC#show int trunk
Port      Mode      Encapsulation  Status  Native vlan
Gig1/1    on        802.1q         trunking 1
Gig1/2    on        802.1q         trunking 1

Port      Vlans allowed on trunk
Gig1/1    1-1005
Gig1/2    1-1005

Port      Vlans allowed and active in management domain
Gig1/1    1, 110, 210, 310
Gig1/2    1, 110, 210, 310

Port      Vlans in spanning tree forwarding state and not pruned
Gig1/1    1, 110, 210, 310
Gig1/2    1, 110, 210, 310

SwitchC#show run interface port-channel 1
interface Port-channel 1
 description Uplink_to_Core
 switchport mode trunk

```

VCEUp

SwitchC connects HR and Sales to the Core switch. However, business needs require that no traffic from the Finance VLAN traverse this switch.

Which command meets this requirement?

- A. SwitchC(config)#vtp pruning vlan 110
- B. SwitchC(config)#vtp pruning
- C. SwitchC(config)#interface port-channel 1
SwitchC(config-if)#switchport trunk allowed vlan add 210,310
- D. SwitchC(config)#interface port-channel 1
SwitchC(config-if)#switchport trunk allowed vlan remove 110

Correct Answer: D

Section: (none)

Explanation

Explanation/Reference:

QUESTION 102

Refer to the exhibit.

PYTHON CODE:

```
import requests
import json
```

```
url='http://YOURIP/ins'
switchuser='USERID'
switchpassword='PASSWORD'
```

```
myheaders={'content-type':'application/json'}
```

```
payload={
  "ins_api":{
    "version": "1.0",
    "type": "cli_show",
    "chunk": "0",
    "sid": "1"
    "input": "show version",
    "output_format": "json"
  }
}
```

```
response = requests.post(url,data=json.dumps(payload), headers=myheaders,auth=(switchuser,switchpassword)).json()
```

```
print(response['ins_api']['outputs']['output']['body']['kickstart_ver_str'])
```

HTTP JSON Response:

```
{
  "ins_api":{
    "type": "cli_show",
    "version": "1.0",
    "sid": "eoc",
    "outputs": {
      "output": {
        "input": "show version",
        "msg": "Success",
        "code": "200",
        "body": {
          "bios_ver_str": "07.61",
          "kickstart_ver_str": "7.0(3)|7(4)",
          "bios_cmpl_time": "04/06/2017",
          "kick_file_name": "bootflash:///nxos.7.0.3|7.4.bin",
          "kick_cmpl_time": "6/14/1970 2:00:00",
          "kick_tmstamp": "06/14/1970 09:49:04",
          "chassis_id": "Nexus9000 93180YC-EX chassis",
          "cpu_name": "Intel(R) Xeon(R) CPU @ 1.80GHz",
          "memory": 24633488,
          "mem_type": "kB",
          "rr_usecs": 134703,
          "rr_crime": "Sun Mar 10 15:41:46 2019",
          "rr_reason": "Reset Requested by CLI command reload",
          "rr_sys_ver": "7.0(3)|7(4)",
          "rr_service": "",
          "manufacturer": "Cisco Systems, Inc.",
          "TABLE_package_list": {
            "ROW_package_list": {
              "package_id": {}
            }
          }
        }
      }
    }
  }
}
```

Which HTTP JSON response does the Python code output give?

- A. 7.0(3)|7(4)
- B. 7.61
- C. NameError: name 'json' is not defined
- D. KeyError: 'kickstart_ver_str'

Correct Answer: A

Section: (none)

Explanation

Explanation/Reference:

QUESTION 103 Which two namespaces does the LISP network architecture and protocol use? (Choose two.)

- A. TLOC
- B. RLOC
- C. DNS
- D. VTEP
- E. EID

Correct Answer: BE

Section: (none)

Explanation

Explanation/Reference:

Reference: https://www.cisco.com/c/en/us/td/docs/ios-xml/ios/iproute_lisp/configuration/xr-3s/irl-xr-3s-book/irl-overview.html

QUESTION 104 A network administrator applies the following configuration to an IOS device:

```
aaa new-model
aaa authentication login default
local group tacacs+
```

What is the process of password checks when a login attempt is made to the device?

- A. A TACACS+ server is checked first. If that check fails, a local database is checked.
- B. A TACACS+ server is checked first. If that check fails, a RADIUS server is checked. If that check fails, a local database is checked.
- C. A local database is checked first. If that check fails, a TACACS+ server is checked. If that check fails, a RADIUS server is checked.
- D. A local database is checked first. If that check fails, a TACACS+ server is checked.

Correct Answer: D

Section: (none)

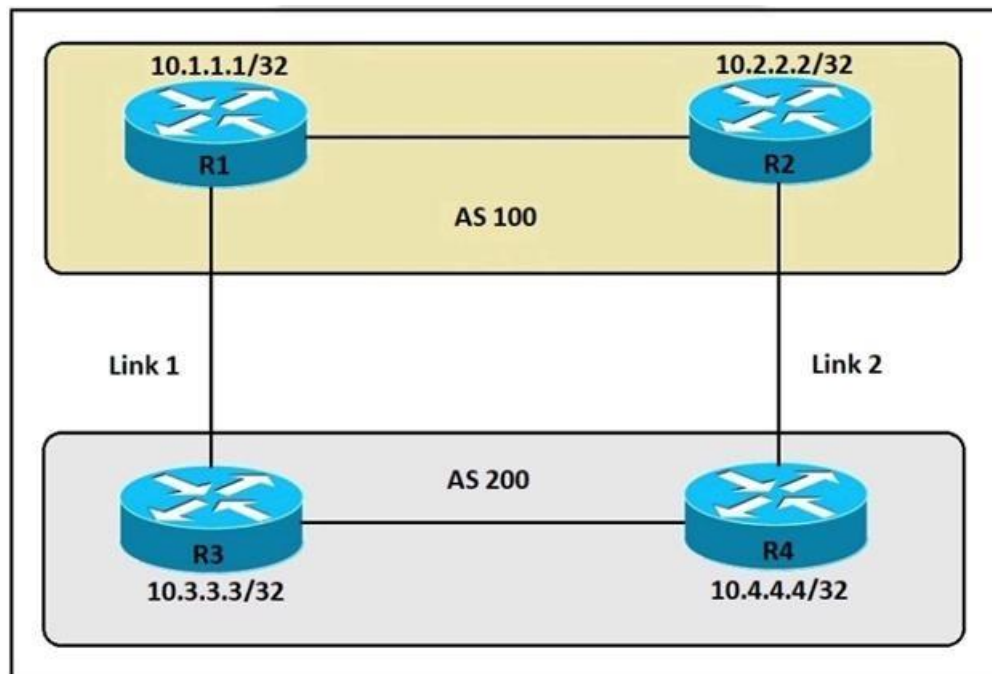
Explanation

Explanation/Reference:

Reference: <https://www.cisco.com/c/en/us/support/docs/security/vpn/terminal-access-controller-access-control-system-tacacs-/200606-aaa-authentication-login-default-local.html>

QUESTION 105

Refer to the exhibit.



An engineer must ensure that all traffic leaving AS 200 will choose Link 2 as the exit point.

Assuming that all BGP neighbor relationships have been formed and that the attributes have not been changed on any of the routers, which configuration accomplishes this task?

- A. R4(config-router)**bgp default local-preference 200**
- B. R3(config-router)**bgp default local-preference 200**
- C. R4(config-router)**neighbor 10.2.2.2 weight 200**
- D. R3(config-router)**neighbor 10.1.1.1 weight 200**

Correct Answer: A

Section: (none)

Explanation

Explanation/Reference:

Reference: [https://www.cisco.com/c/en/us/support/docs/ip/border-gateway-protocol-bgp/13753-25.html#:~:text=Border%20Gateway%20Protocol%20\(BGP\)%20routers,to%20use%20for%20traffic%20forwarding.](https://www.cisco.com/c/en/us/support/docs/ip/border-gateway-protocol-bgp/13753-25.html#:~:text=Border%20Gateway%20Protocol%20(BGP)%20routers,to%20use%20for%20traffic%20forwarding.)

QUESTION 106 Which two entities are Type 1 hypervisors? (Choose two.)

- A. Oracle VM VirtualBox
- B. Microsoft Hyper-V
- C. VMware server
- D. VMware ESXi
- E. Microsoft Virtual PC

Correct Answer: BD

Section: (none)

Explanation

Explanation/Reference:

Reference: <https://phoenixnap.com/kb/what-is-hypervisor-type-1-2>

QUESTION 107

DRAG DROP

Drag and drop the LISP components from the left onto the functions they perform on the right. Not all options are used.

Select and Place:

Correct Answer:

Section: (none)
Explanation

Explanation/Reference:

Reference: [https://www.cisco.com/c/en/us/td/docs/solutions/Enterprise/Data_Center/DCI/5-0/LISPmobility/DCI_LISP_Host_Mobility/LISPmobile_2.html#:~:text=%E2%80%93%20Proxy%20ITR%20\(PITR\)%3A%20A,devices%20deployed%20at%20LISP%20sites.](https://www.cisco.com/c/en/us/td/docs/solutions/Enterprise/Data_Center/DCI/5-0/LISPmobility/DCI_LISP_Host_Mobility/LISPmobile_2.html#:~:text=%E2%80%93%20Proxy%20ITR%20(PITR)%3A%20A,devices%20deployed%20at%20LISP%20sites.)

QUESTION 108 In a Cisco SD-Access solution, what is the role of a fabric edge node?

- A. to connect external Layer 3 networks to the SD-Access fabric
- B. to connect wired endpoints to the SD-Access fabric
- C. to advertise fabric IP address space to external networks
- D. to connect the fusion router to the SD-Access fabric

Correct Answer: B
Section: (none)
Explanation

Explanation/Reference:

QUESTION 109 Which feature of EIGRP is not supported in OSPF?

- A. load balancing of unequal-cost paths
- B. load balance over four equal-cost paths
- C. uses interface bandwidth to determine best path
- D. per-packet load balancing over multiple paths

Correct Answer: A
Section: (none)
Explanation

Explanation/Reference:

QUESTION 110 A company plans to implement intent-based networking in its campus infrastructure.

Which design facilitates a migration from a traditional campus design to a programmable fabric design?

- A. two-tier
- B. Layer 2 access
- C. three-tier
- D. routed access

Correct Answer: A
Section: (none)
Explanation

Explanation/Reference:

QUESTION 111

Refer to the exhibit.

WLANs > Edit 'Guest_Wireless'

General Security QoS Policy-Mapping Advanced

Layer 2 Layer 3 AAA Servers

Select AAA servers below to override use of default servers on this WLAN

RADIUS Servers

RADIUS Server Overwrite interface ☒ Enabled
Interface Priority WLAN ▼

	Authentication Servers	Accounting Servers
	<input checked="" type="checkbox"/> Enabled	<input checked="" type="checkbox"/> Enabled
Server 1	None ▼	None ▼
Server 2	None ▼	None ▼
Server 3	None ▼	None ▼
Server 4	None ▼	None ▼
Server 5	None ▼	None ▼
Server 6	None ▼	None ▼

Assuming the WLC's interfaces are not in the same subnet as the RADIUS server, which interface would the WLC use as the source for all RADIUS-related traffic?

- A. the controller management interface
- B. the controller virtual interface
- C. the interface specified on the WLAN configuration
- D. any interface configured on the WLC

Correct Answer: C

Section: (none)

Explanation

Explanation/Reference:

QUESTION 112 Which action is a function of VTEP in VXLAN?

- A. tunneling traffic from IPv6 to IPv4 VXLANs
- B. allowing encrypted communication on the local VXLAN Ethernet segment
- C. encapsulating and de-encapsulating VXLAN Ethernet frames
- D. tunneling traffic from IPv4 to IPv6 VXLANs

Correct Answer: C

Section: (none)

Explanation

Explanation/Reference:

QUESTION 113

Which NTP Stratum level is a server that is connected directly to an authoritative time source?

- A. Stratum 0
- B. Stratum 1
- C. Stratum 14
- D. Stratum 15

Correct Answer: B

Section: (none)

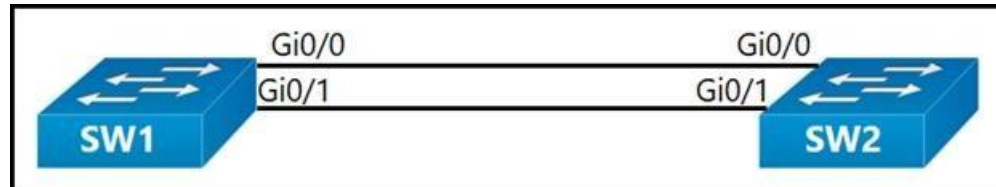
Explanation

Explanation/Reference:

Reference: <https://www.cisco.com/c/en/us/td/docs/routers/asr920/configuration/guide/bsm/16-6-1/b-sm-xe-16-6-1-asr920/bsm-time-calendar-set.html>

QUESTION 114

Refer to the exhibit.



An engineer reconfigures the port-channel between SW1 and SW2 from an access port to a trunk and immediately notices this error in SW1's log: *Mar

1 09:47:22.245: %PM-4-ERR_DISABLE: bpduguard error detected on Gi0/0, putting Gi0/0 in err-disable state

Which command set resolves this error?

- A. SW1(config-if)#**interface Gi0/0**
SW1(config-if)#**no spanning-tree bpduguard**
SW1(config-if)#**shut**
SW1(config-if)#**no shut**
- B. SW1(config-if)#**interface Gi0/0**
SW1(config-if)#**no spanning-tree bpduguard enable**
SW1(config-if)#**shut**
SW1(config-if)#**no shut**
- C. SW1(config-if)#**interface Gi0/0**
SW1(config-if)#**spanning-tree bpduguard enable**
SW1(config-if)#**shut**
SW1(config-if)#**no shut**
- D. SW1(config-if)#**interface Gi0/1**
SW1(config-if)#**spanning-tree bpduguard enable**
SW1(config-if)#**shut**
SW1(config-if)#**no shut**

Correct Answer: B

Section: (none)

Explanation

Explanation/Reference:

QUESTION 115 When a wireless client roams between two different wireless controllers, a network connectivity outage is experienced for a period of time.

Which configuration issue would cause this problem?

- A. Not all of the controllers in the mobility group are using the same mobility group name.
- B. Not all of the controllers within the mobility group are using the same virtual interface IP address.
- C. All of the controllers within the mobility group are using the same virtual interface IP address.

D. All of the controllers in the mobility group are using the same mobility group name.

Correct Answer: A

Section: (none)

Explanation

Explanation/Reference:

Reference: <https://www.cisco.com/c/en/us/support/docs/wireless/4400-series-wireless-lan-controllers/107188-mobility-groups-faq.html>

QUESTION 116 What is the role of the RP in PIM sparse mode?

- A. The RP maintains default aging timeouts for all multicast streams requested by the receivers.
- B. The RP acts as a control-plane node only and does not receive or forward multicast packets.
- C. The RP is the multicast router that is the root of the PIM-SM shared multicast distribution tree.
- D. The RP responds to the PIM join messages with the source of a requested multicast group.

Correct Answer: C

Section: (none)

Explanation

Explanation/Reference:

QUESTION 117 How does QoS traffic shaping alleviate network congestion?

- A. It drops packets when traffic exceeds a certain bitrate.
- B. It buffers and queues packets above the committed rate.
- C. It fragments large packets and queues them for delivery.
- D. It drops packets randomly from lower priority queues.

Correct Answer: B

Section: (none)

Explanation

Explanation/Reference:

Reference: <https://www.cisco.com/c/en/us/support/docs/quality-of-service-qos/qos-policing/19645-policevsshape.html>

QUESTION 118 Why is an AP joining a different WLC than the one specified through option 43?

- A. The AP is joining a primed WLC
- B. The APs broadcast traffic is unable to reach the WLC through Layer 2
- C. The AP multicast traffic is unable to reach the WLC through Layer 3
- D. The WLC is running a different software version

Correct Answer: C

Section: (none)

Explanation

Explanation/Reference:

QUESTION 119 An engineer is describing QoS to a client.

Which two facts apply to traffic policing? (Choose two.)

- A. Policing should be performed as close to the source as possible.
- B. Policing adapts to network congestion by queuing excess traffic.

- C. Policing should be performed as close to the destination as possible.
- D. Policing drops traffic that exceeds the defined rate.
- E. Policing typically delays the traffic, rather than drops it.

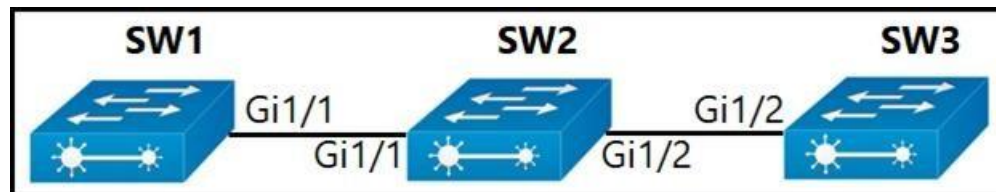
Correct Answer: AD

Section: (none)

Explanation

Explanation/Reference:

QUESTION 120



Company policy restricts VLAN 10 to be allowed only on SW1 and SW2. All other VLANs can be on all three switches. An administrator has noticed that VLAN 10 has propagated to SW3.

Which configuration corrects the issue?

- A. SW1(config)#int gi1/1
SW1(config)#switchport trunk allowed vlan 1-9,11-4094
- B. SW2(config)#int gi1/2
SW2(config)#switchport trunk allowed vlan 10
- C. SW2(config)#int gi1/2
SW2(config)#switchport trunk allowed vlan 1-9,11-4094
- D. SW1(config)#int gi1/1
SW1(config)#switchport trunk allowed vlan 10

Correct Answer: A

Section: (none)

Explanation

Explanation/Reference:

QUESTION 121 Which component handles the orchestration plane of the Cisco SD-WAN?

- A. vBond
- B. vSmart
- C. vManage
- D. WAN Edge

Correct Answer: A

Section: (none)

Explanation

Explanation/Reference:

Reference: <https://www.ciscolive.com/c/dam/r/ciscolive/emea/docs/2018/pdf/BRKCRS-2112.pdf> page 8.

QUESTION 122

Refer to the exhibit.

```
vlan 222
  remote-span
!
vlan 223
  remote-span
!
monitor session 1 source interface FastEthernet0/1 tx
monitor session 1 source interface FastEthernet0/2 rx
monitor session 1 source interface port-channel 5
monitor session 1 destination remote vlan 222
!
```

What is the result when a technician adds the **monitor session 1 destination remote vlan 223** command?

- A. The RSPAN VLAN is replaced by VLAN 223.
- B. RSPAN traffic is sent to VLANs 222 and 223.
- C. An error is flagged for configuring two destinations.
- D. RSPAN traffic is split between VLANs 222 and 223.

Correct Answer: A

Section: (none)

Explanation

Explanation/Reference:

QUESTION 123

Which First Hop Redundancy Protocol should be used to meet a design requirement for more efficient default gateway bandwidth usage across multiple devices?

- A. GLBP
- B. LACP
- C. HSRP
- D. VRRP

Correct Answer: A

Section: (none)

Explanation

Explanation/Reference:

QUESTION 124 Which component of the Cisco Cyber Threat Defense solution provides user and flow context analysis?

- A. Cisco Firepower and FireSIGHT
- B. Cisco Stealthwatch system
- C. Advanced Malware Protection
- D. Cisco Web Security Appliance

Correct Answer: B

Section: (none)

Explanation

Explanation/Reference:

QUESTION 125

A client device roams between access points located on different floors in an atrium. The access points are joined to the same controller and configured in local mode. The access points are in different AP groups and have different IP addresses, but the client VLAN in the groups is the same.

Which type of roam occurs?

- A. inter-controller
- B. inter-subnet
- C. intra-VLAN
- D. intra-controller

Correct Answer: D

Section: (none)

Explanation

Explanation/Reference:

Reference: https://www.cisco.com/c/en/us/td/docs/wireless/controller/8-3/config-guide/b_cg83/b_cg83_chapter_010011.html

QUESTION 126 Which configuration restricts the amount of SSH traffic that a router accepts to 100 kbps? A.

```
class-map match-all CoPP_SSH
  match access-group name CoPP_SSH
  !
policy-map CoPP_SSH
  class CoPP_SSH
    police cir 100000
    exceed-action drop
    !
  !
  !
interface GigabitEthernet0/1
  ip address 209.165.200.225 255.255.255.0
  ip access-group EGRESS out
  service-policy input CoPP_SSH
  !
  ip access-list extended CoPP_SSH
  permit tcp any any eq 22
  !
```

```
class-map match-all CoPP_SSH
  match access-group name CoPP_SSH
  !
policy-map CoPP_SSH
  class CoPP_SSH
    police cir 100000
    exceed-action drop
    !
  !
  !
interface GigabitEthernet0/1
  ip address 209.165.200.225 255.255.255.0
  ip access-group EGRESS out
  service-policy input CoPP_SSH
  !
  ip access-list extended CoPP_SSH
  deny tcp any any eq 22
  !
```

B.

```
class-map match-all CoPP_SSH
  match access-group name CoPP_SSH
  !
policy-map CoPP_SSH
  class CoPP_SSH
    police cir 100000
    exceed-action drop
  !
!
!
  control-plane
    service-policy input CoPP_SSH
!
ip access-list extended CoPP_SSH
  permit tcp any any eq 22
!
```

```
class-map match-all CoPP_SSH
  match access-group name CoPP_SSH
  !
policy-map CoPP_SSH
  class CoPP_SSH
    police cir 100000
    exceed-action drop
  !
!
!
  control-plane transit
    service-policy input CoPP_SSH
!
ip access-list extended CoPP_SSH
  permit tcp any any eq 22
!
```

C.

D.

Correct Answer: C

Section: (none)

Explanation

Explanation/Reference:

QUESTION 127 Which algorithms are used to secure REST API from brute attacks and minimize the impact?

- A. SHA-512 and SHA-384
- B. MD5 algorithm-128 and SHA-384
- C. SHA-1, SHA-256, and SHA-512
- D. PBKDF2, BCrypt, and SCrypt

Correct Answer: D

Section: (none)

Explanation

Explanation/Reference:

QUESTION 128 An engineer must protect their company against ransomware attacks.

Which solution allows the engineer to block the execution stage and prevent file encryption?

- A. Use Cisco Firepower and block traffic to TOR networks.
- B. Use Cisco AMP deployment with the Malicious Activity Protection engine enabled.
- C. Use Cisco Firepower with Intrusion Policy and snort rules blocking SMB exploitation.
- D. Use Cisco AMP deployment with the Exploit Prevention engine enabled.

Correct Answer: B

Section: (none)

Explanation

Explanation/Reference:

QUESTION 129 Which DHCP option helps lightweight APs find the IP address of a wireless LAN controller?

- A. Option 43
- B. Option 60
- C. Option 67
- D. Option 150

Correct Answer: A

Section: (none)

Explanation

Explanation/Reference:

QUESTION 130 What are two device roles in Cisco SD-Access fabric? (Choose two.)

- A. edge node
- B. vBond controller
- C. access switch

- D. core switch
- E. border node

Correct Answer: AE

Section: (none)

Explanation

Explanation/Reference:

QUESTION 131

Which tool is used in Cisco DNA Center to build generic configurations that are able to be applied on devices with similar network settings?

- A. Command Runner
- B. Application Policies
- C. Template Editor
- D. Authentication Template

Correct Answer: C

Section: (none)

Explanation

Explanation/Reference:

Reference: https://www.cisco.com/c/en/us/td/docs/cloud-systems-management/network-automation-and-management/dna-center/1-3/user_guide/b_cisco_dna_center_ug_1_3/b_cisco_dna_center_ug_1_3_chapter_0111.html

QUESTION 132

What are two reasons why broadcast radiation is caused in the virtual machine environment? (Choose two.)

- A. vSwitch must interrupt the server CPU to process the broadcast packet.
- B. The Layer 2 domain can be large in virtual machine environments.
- C. Virtual machines communicate primarily through broadcast mode.
- D. Communication between vSwitch and network switch is broadcast based.
- E. Communication between vSwitch and network switch is multicast based.

Correct Answer: AD

Section: (none)

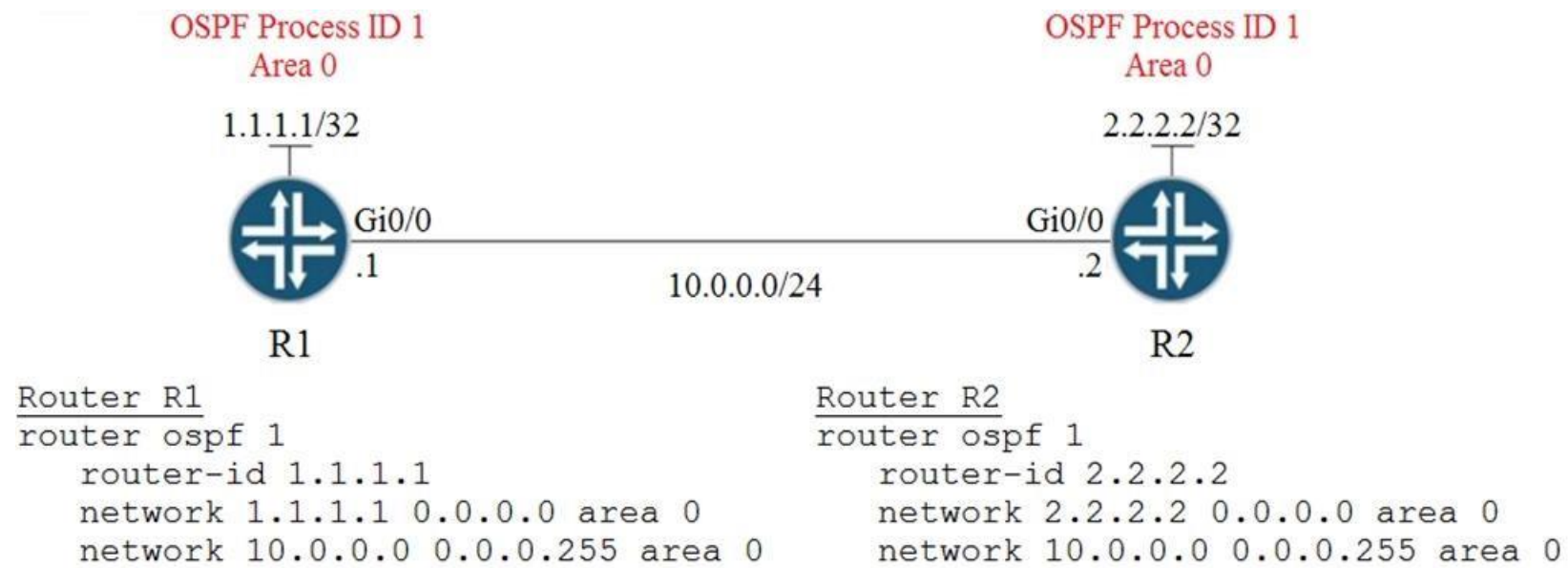
Explanation

Explanation/Reference:

Reference: https://www.cisco.com/c/en/us/solutions/collateral/data-center-virtualization/net_implementation_white_paper0900aecd806a9c05.html

QUESTION 133

Refer to the exhibit.



A network engineer is configuring OSPF between router R1 and router R2. The engineer must ensure that a DR/BDR election does not occur on the Gigabit Ethernet interfaces in area 0.

Which configuration set accomplishes this goal?

- A. R1(config-if)**interface Gi0/0**
R1(config-if)**ip ospf network point-to-point**

R2(config-if)**interface Gi0/0**
R2(config-if)**ip ospf network point-to-point**
- B. R1(config-if)**interface Gi0/0**
R1(config-if)**ip ospf network broadcast**

R2(config-if)**interface Gi0/0**
R2(config-if)**ip ospf network broadcast**
- C. R1(config-if)**interface Gi0/0**
R1(config-if)**ip ospf database-filter all out**

R2(config-if)**interface Gi0/0**
R2(config-if)**ip ospf database-filter all out**
- D. R1(config-if)**interface Gi0/0**
R1(config-if)**ip ospf priority 1**
R2(config-if)**interface Gi0/0**
R2(config-if)**ip ospf priority 1**

Correct Answer: A

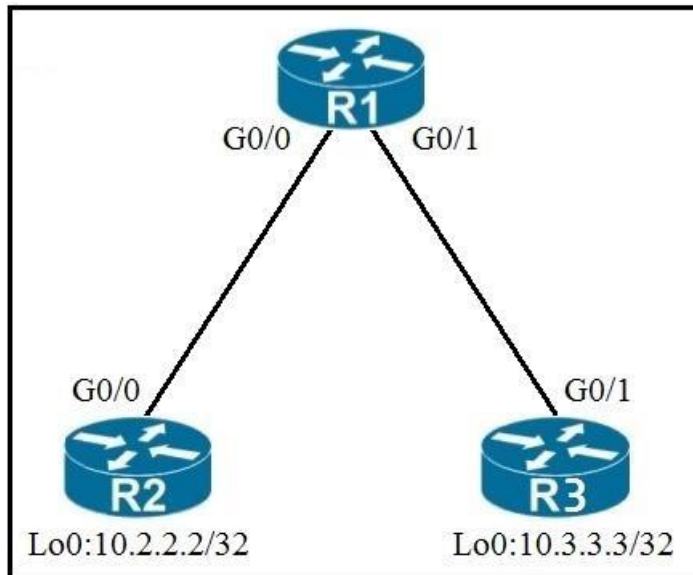
Section: (none)

Explanation

Explanation/Reference:

QUESTION 134

Refer to the exhibit.



An engineer must deny Telnet traffic from the loopback interface of router R3 to the loopback interface of router R2 during the weekend hours. All other traffic between the loopback interfaces of routers R3 and R2 must be allowed at all times.

Which command set accomplishes this task?

- A. R3(config)#**time-range WEEKEND**
 R3(config-time-range)#**periodic Saturday Sunday 00:00 to 23:59**
- R3(config)#**access-list 150 deny tcp host 10.3.3.3 host 10.2.2.2 eq 23 time-range WEEKEND** R3(config)#**access-list 150 permit ip any any time-range WEEKEND**
- R3(config)#**interface G0/1**
 R3(config-if)#**ip access-group 150 out**
- B. R1(config)#**time-range WEEKEND**
 R1(config-time-range)#**periodic weekend 00:00 to 23:59**
- R1(config)#**access-list 150 deny tcp host 10.3.3.3 host 10.2.2.2 eq 23 time-range WEEKEND** R1(config)#**access-list 150 permit ip any any**
- R1(config)#**interface G0/1**
 R1(config-if)#**ip access-group 150 in**
- C. R3(config)#**time-range WEEKEND**
 R3(config-time-range)#**periodic weekend 00:00 to 23:59**
- R3(config)#**access-list 150 permit tcp host 10.3.3.3 host 10.2.2.2 eq 23 time-range WEEKEND** R3(config)#**access-list 150 permit ip any any time-range WEEKEND**
- R3(config)#**interface G0/1**
 R3(config-if)#**ip access-group 150 out**
- D. R1(config)#**time-range WEEKEND**
 R1(config-time-range)#**periodic Friday Sunday 00:00 to 00:00**
- R1(config)#**access-list 150 deny tcp host 10.3.3.3 host 10.2.2.2 eq 23 time-range WEEKEND** R1(config)#**access-list 150 permit ip any any**
- R1(config)#**interface G0/1**
 R1(config-if)#**ip access-group 150 in**

Correct Answer: B

Section: (none)

Explanation

Explanation/Reference:**QUESTION 135**

Which access point mode allows a supported AP to function like a WLAN client would, associating and identifying client connectivity issues?

- A. client mode
- B. SE-connect mode
- C. sensor mode
- D. sniffer mode

Correct Answer: D

Section: (none)

Explanation

Explanation/Reference:**QUESTION 136**

A network administrator is preparing a Python script to configure a Cisco IOS XE-based device on the network. The administrator is worried that colleagues will make changes to the device while the script is running.

Which operation of the ncclient manager prevents colleagues from making changes to the devices while the script is running?

- A. m.lock(config='running')
- B. m.lock(target='running')
- C. m.freeze(target='running')
- D. m.freeze(config='running')

Correct Answer: B

Section: (none)

Explanation

Explanation/Reference:**QUESTION 137**

What does the Cisco DNA Center use to enable the delivery of applications through a network and to yield analytics for innovation?

- A. process adapters
- B. Command Runner
- C. intent-based APIs
- D. domain adapters

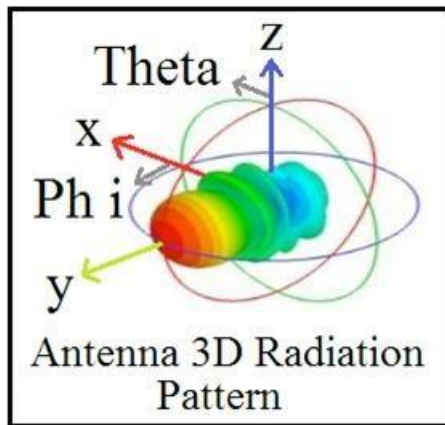
Correct Answer: C

Section: (none)

Explanation

Explanation/Reference:**QUESTION 138**

Refer to the exhibit.



Which type of antenna does the radiation pattern represent?

- A. multidirectional
- B. directional patch
- C. omnidirectional
- D. Yagi

Correct Answer: D

Section: (none)

Explanation

Explanation/Reference:

Reference: https://www.cisco.com/c/en/us/products/collateral/wireless/aironet-antennas-accessories/prod_white_paper0900aecd806a1a3e.html

QUESTION 139

Wireless users report frequent disconnections from the wireless network. While troubleshooting, a network engineer finds that after the user is disconnected, the connection re-establishes automatically without any input required. The engineer also notices these message logs:

AP 'AP2' is down. Reason: Radio channel set. 6:54:04 PM

AP 'AP4' is down. Reason: Radio channel set. 6:44:49 PM

AP 'AP7' is down. Reason: Radio channel set. 6:34:32 PM

Which action reduces the user impact?

- A. enable coverage hole detection
- B. increase the AP heartbeat timeout
- C. enable BandSelect
- D. increase the dynamic channel assignment interval

Correct Answer: D

Section: (none)

Explanation

Explanation/Reference:

QUESTION 140

Which devices does Cisco DNA Center configure when deploying an IP-based access control policy?

- A. all devices integrating with ISE
- B. selected individual devices
- C. all devices in selected sites
- D. all wired devices

Correct Answer: C

Section: (none)

Explanation

Explanation/Reference:

Reference: https://www.cisco.com/c/en/us/td/docs/cloud-systems-management/network-automation-and-management/dna-center/1-2/user_guide/b_dnac_ug_1_2/b_dnac_ug_1_2_chapter_01000.html#id_53453

QUESTION 141

Refer to the exhibit.

```
access-list 1 permit 172.16.1.0 0.0.0.255
ip nat inside source list 1 interface gigabitethernet0/0 overload
```

The inside and outside interfaces in the NAT configuration of this device have been correctly identified.

What is the effect of this configuration?

- A. NAT64
- B. dynamic NAT
- C. static NAT
- D. PAT

Correct Answer: D

Section: (none)

Explanation

Explanation/Reference:

QUESTION 142

DRAG DROP

Drag and drop the descriptions from the left onto the routing protocol they describe on the right.

Select and Place:

Correct Answer:

Section: (none)

Explanation

Explanation/Reference:

QUESTION 143 What is the role of the vSmart controller in a Cisco SD-WAN environment?

- A. It performs authentication and authorization.
- B. It manages the control plane.
- C. It is the centralized network management system.
- D. It manages the data plane.

Correct Answer: B

Section: (none)

Explanation

Explanation/Reference:

QUESTION 144 When a wired client connects to an edge switch in a Cisco SD-Access fabric, which component decides whether the client has access to the network?

- A. edge node
- B. Identity Services Engine
- C. RADIUS server
- D. control-plane node

Correct Answer: C

Section: (none)

Explanation

Explanation/Reference:

QUESTION 145 Which benefit is offered by a cloud infrastructure deployment but is lacking in an on-premises deployment?

- A. virtualization
- B. supported systems
- C. storage capacity
- D. efficient scalability

Correct Answer: D

Section: (none)

Explanation

Explanation/Reference:

QUESTION 146 Which protocol infers that a YANG data model is being used?

- A. SNMP
- B. RESTCONF
- C. REST
- D. NX-API

Correct Answer: B

Section: (none)

Explanation

Explanation/Reference:

QUESTION 147 Which method of account authentication does OAuth 2.0 use within REST APIs?

- A. username/role combination
- B. access tokens
- C. cookie authentication
- D. basic signature workflow

Correct Answer: B

Section: (none)

Explanation

Explanation/Reference:

Reference: <https://www.cisco.com/c/en/us/td/docs/security/firepower/ftd-api/guide/ftd-rest-api/auth-ftd-rest-api.pdf>

QUESTION 148 Which action is the vSmart controller responsible for in a Cisco SD-WAN deployment?

- A. onboard WAN Edge nodes into the Cisco SD-WAN fabric
- B. gather telemetry data from WAN Edge routers
- C. distribute policies that govern data forwarding performed within the Cisco SD-WAN fabric
- D. handle, maintain, and gather configuration and status for nodes within the Cisco SD-WAN fabric

Correct Answer: C

Section: (none)

Explanation

Explanation/Reference:

QUESTION 149

What does the LAP send when multiple WLCs respond to the CISCO-CAPWAP-CONTROLLER.localdomain hostname during the CAPWAP discovery and join process?

- A. unicast discovery request to the first WLC that resolves the domain name
- B. broadcast discovery request
- C. join request to all the WLCs
- D. unicast discovery request to each WLC

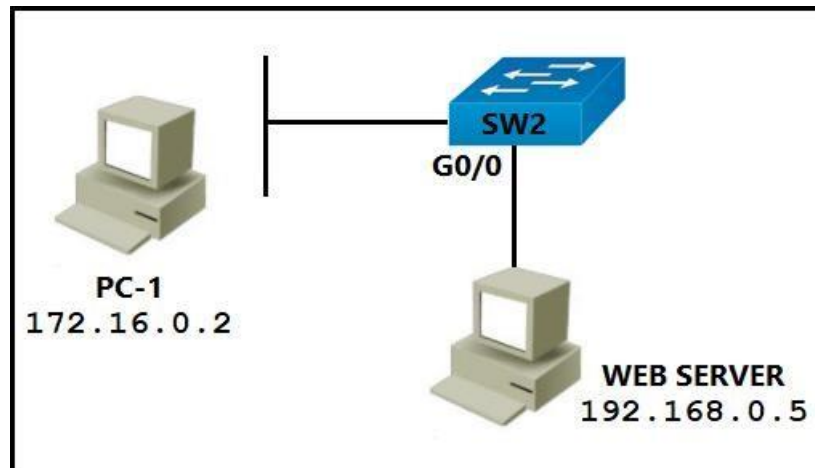
Correct Answer: A

Section: (none)

Explanation

Explanation/Reference:

QUESTION 150



Refer to the exhibit. PC-1 must access the web server on port 8080. To allow this traffic, which statement must be added to an access control list that is applied on SW2 port G0/0 in the inbound direction?

- A. permit tcp host 172.16.0.2 host 192.168.0.5 eq 8080
- B. permit tcp host 192.168.0.5 host 172.16.0.2 eq 8080
- C. permit tcp host 192.168.0.5 eq 8080 host 172.16.0.2
- D. permit tcp host 192.168.0.5 lt 8080 host 172.16.0.2

Correct Answer: A

Section: (none)

Explanation

Explanation/Reference:

QUESTION 151 What is the result of applying this access control list?

ip access-list extended STATEFUL
10 permit tcp any any established
20 deny ip any any

- A. TCP traffic with the URG bit set is allowed.
- B. TCP traffic with the SYN bit set is allowed.
- C. TCP traffic with the ACK bit set is allowed.
- D. TCP traffic with the DF bit set is allowed.

Correct Answer: C
Section: (none)
Explanation

Explanation/Reference:

QUESTION 152 What is the purpose of an RP in PIM?

- A. send join messages toward a multicast source SPT
- B. ensure the shortest path from the multicast source to the receiver
- C. receive IGMP joins from multicast receivers
- D. secure the communication channel between the multicast sender and receiver

Correct Answer: A
Section: (none)
Explanation

Explanation/Reference:

QUESTION 153

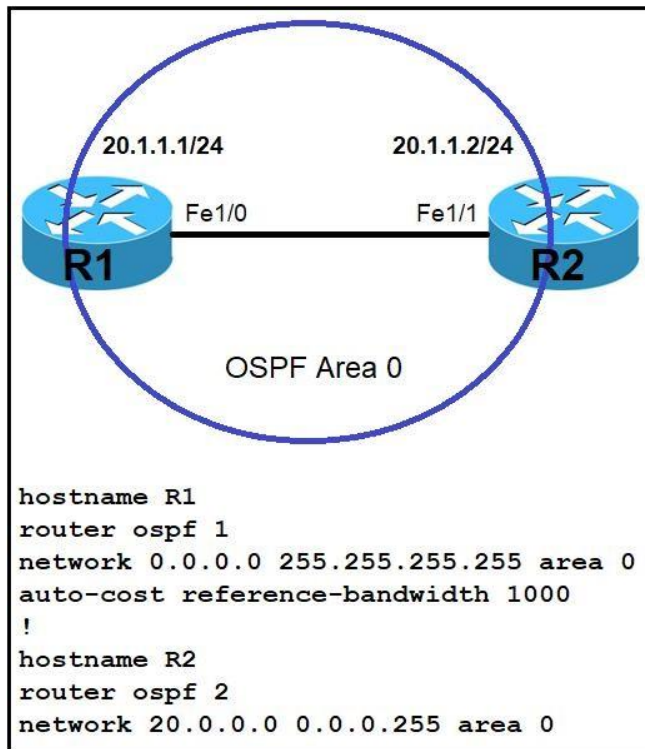
Which outbound access list, applied to the WAN interface of a router, permits all traffic except for http traffic sourced from the workstation with IP address 10.10.10.1?

- A. ip access-list extended 200deny tcp host 10.10.10.1 eq 80 any permit ip any any
- B. ip access-list extended 10deny tcp host 10.10.10.1 any eq 80 permit ip any any
- C. ip access-list extended NO_HTTPdeny tcp host 10.10.10.1 any eq 80
- D. ip access-list extended 100 deny tcp host 10.10.10.1 any eq 80 permit ip any any

Correct Answer: D
Section: (none)
Explanation

Explanation/Reference:

QUESTION 154



Refer to the exhibit. Which command must be applied to R2 for an OSPF neighborship to form?

- A. `network 20.1.1.2 255.255.0.0 area 0`
- B. `network 20.1.1.2 0.0.0.0 area 0`
- C. `network 20.1.1.2 255.255.255.255 area 0`
- D. `network 20.1.1.2 0.0.255.255 area 0`

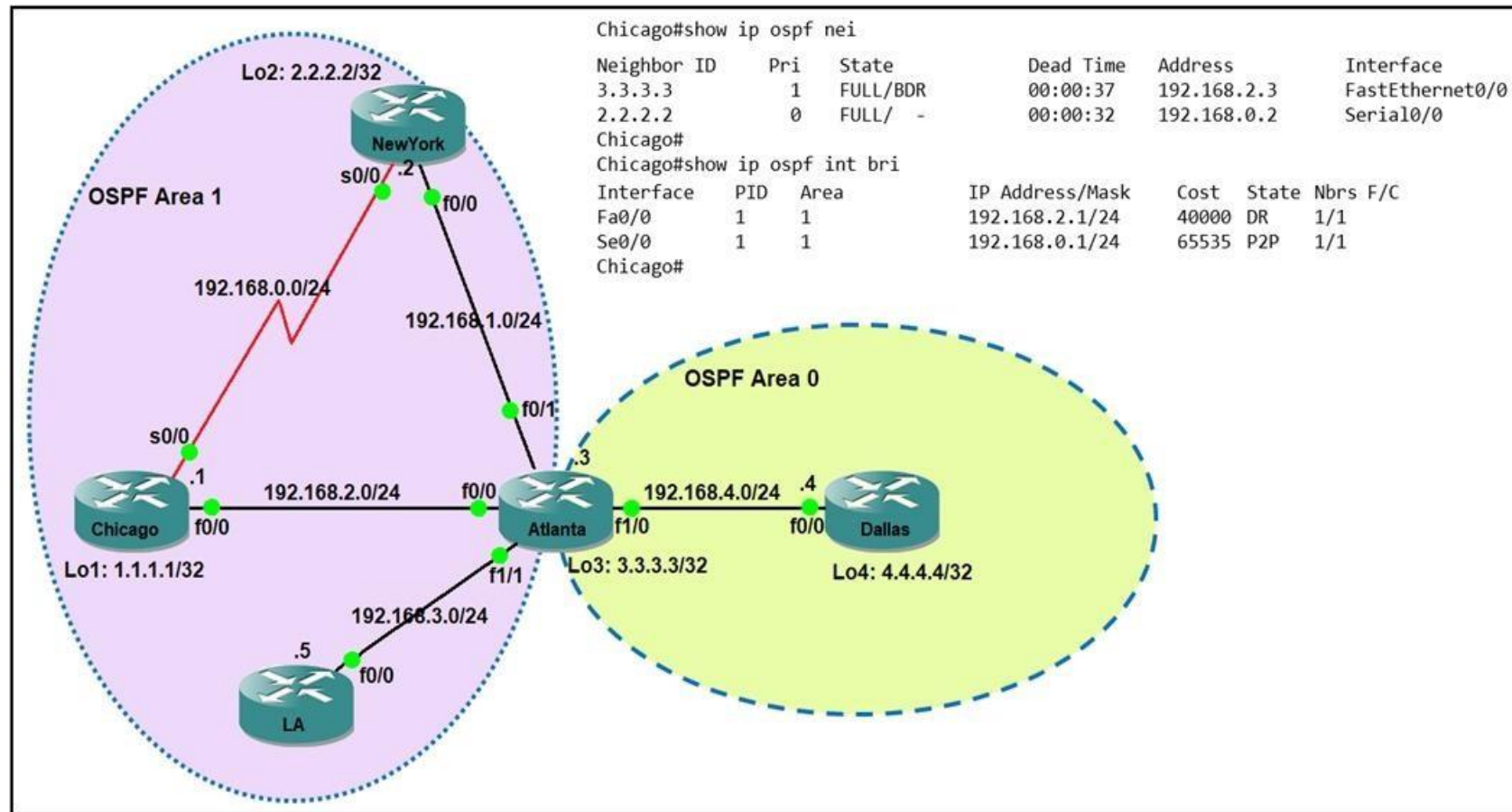
Correct Answer: B

Section: (none)

Explanation

Explanation/Reference:

QUESTION 155



Refer to the exhibit. Which router is the designated router on the segment 192.168.0.0/24?

- A. This segment has no designated router because it is a p2p network type.
- B. Router Chicago because it has a lower router ID.
- C. Router NewYork because it has a higher router ID.
- D. This segment has no designated router because it is a nonbroadcast network type.

Correct Answer: A

Section: (none)

Explanation

Explanation/Reference:

QUESTION 156

```
<?xml version="1.0" encoding="utf-8"?>
  <data xmlns="urn:ietf:params:xml:ns:netconf:base:1.0"/>
```

Refer to the exhibit. What does the error message relay to the administrator who is trying to configure a Cisco IOS device?

- A. The device received a valid NETCONF request and serviced it without error.
- B. The NETCONF running datastore is currently locked.
- C. A NETCONF request was made for a data model that does not exist.
- D. A NETCONF message with valid content based on the YANG data models was made, but the request failed.

Correct Answer: C

Section: (none)

Explanation

Explanation/Reference:

QUESTION 157

```
SW1#sh monitor session all
Session 1
-----
Type                : Remote Destination Session
Source RSPAN VLAN   : 50

Session 2
-----
Type                : Local Session
Source Ports        :
    Both            : Fa0/14
Destination Ports    : Fa0/15
Encapsulation        : Native
Ingress              : Disables
```

Refer to the exhibit. An engineer configures monitoring on SW1 and enters the **show** command to verify operation. What does the output confirm?

- A. RSPAN session 1 is incompletely configures for monitoring.
- B. RSPAN session 1 monitors activity on VLAN 50 of a remote switch.
- C. SPAN session 2 monitors all traffic entering and exiting port FastEthernet 0/15.
- D. SPAN session 2 only monitors egress traffic exiting port FastEthernet 0/14.

Correct Answer: A

Section: (none)

Explanation

Explanation/Reference:

QUESTION 158 Where is radio resource management performed in a Cisco SD-Access wireless solution?

- A. DNA Center
- B. control plane node
- C. wireless controller
- D. Cisco CMX

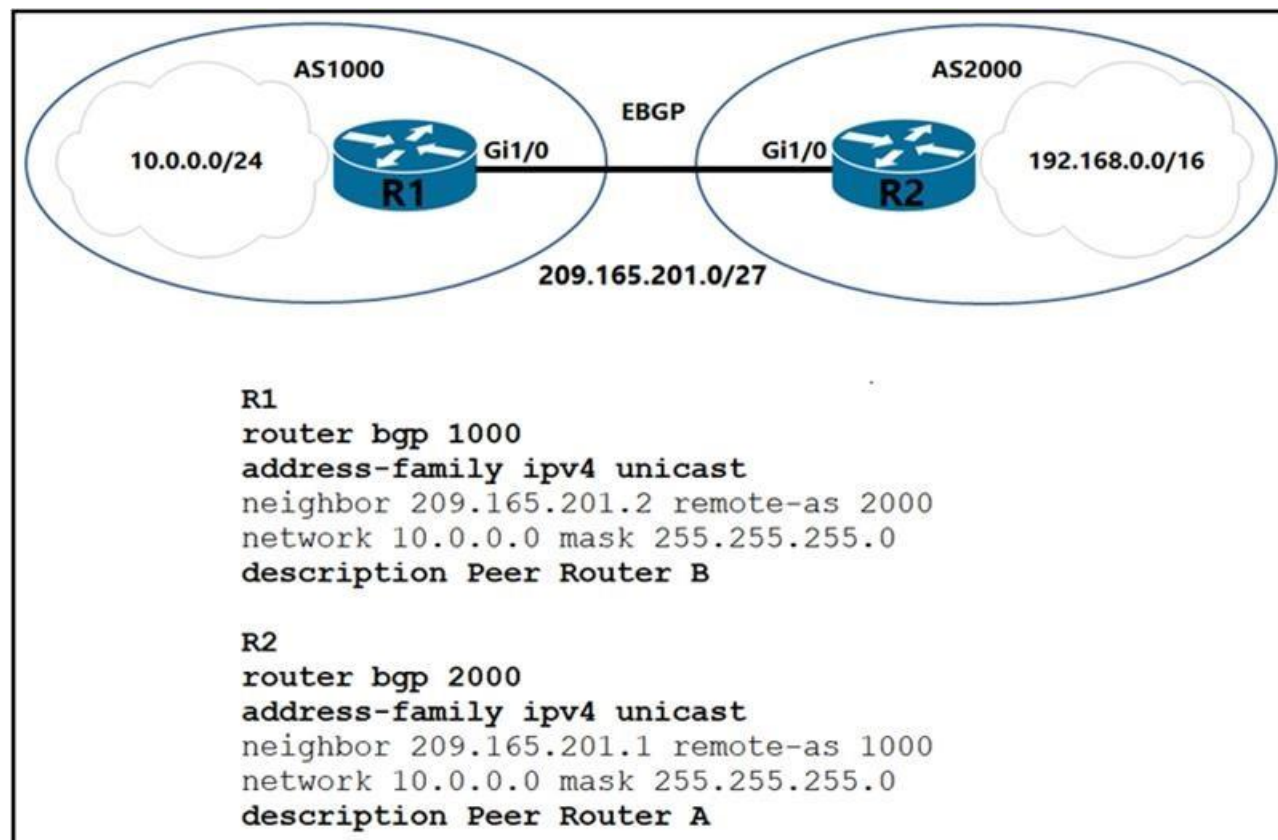
Correct Answer: B

Section: (none)

Explanation

Explanation/Reference:

QUESTION 159



Refer to the exhibit. Which two commands are needed to allow for full reachability between AS 1000 and AS 2000? (Choose two.)

- A. R2#no network 10.0.0.0 255.255.255.0
- B. R2#network 209.165.201.0 mask 255.255.192.0
- C. R2#network 192.168.0.0 mask 255.255.0.0
- D. R1#no network 10.0.0.0 255.255.255.0
- E. R1#network 192.168.0.0 mask 255.255.0.0

Correct Answer: AC

Section: (none)

Explanation

Explanation/Reference:

QUESTION 160 Which two characteristics define the Intent API provided by Cisco DNA Center? (Choose two.)

- A. northbound API
- B. business outcome oriented
- C. device-oriented
- D. southbound API
- E. procedural

Correct Answer: AB

Section: (none)

Explanation

Explanation/Reference:

QUESTION 161

```

interface Vlan10
ip vrf forwarding Clients
ip address 192.168.1.1 255.255.255.0
!
interface Vlan20
ip vrf forwarding Servers
ip address 172.16.1.1 255.255.255.0
!
interface Vlan30
ip vrf forwarding Printers
ip address 10.1.1.1 255.255.255.0
-- output omitted for brevity --
router eigrp 1
10.0.0.0
172.16.0.0
192.168.1.0

```

Refer to the exhibit. An engineer attempts to configure a router on a stick to route packets between Clients, Servers, and Printers; however, initial tests show that this configuration is not working. Which command set resolves this issue?

- A. **interface Vlan10 no ip vrf forwarding Clients**
!
interface Vlan20 no ip vrf forwarding Servers
!
interface Vlan30
no ip vrf forwarding Printers B. **router eigrp 1 network 10.0.0.0 255.255.255.0**
network 172.16.0.0 255.255.255.0
network 192.168.1.0 255.255.255.0 C.
interface Vlan10 no ip vrf forwarding Clients ip address 192.168.1.2.
255.255.255.0
!
interface Vlan20
no ip vrf forwarding Servers ip address 172.16.1.2 255.255.255.0
!
interface Vlan30
no ip vrf forwarding Printers ip address 10.1.1.2 255.255.255.0 D.
router eigrp 1 network 10.0.0.0 255.0.0.0 network 172.16.0.0 255.255.0.0 network 192.168.1.0 255.255.0.0

Correct Answer: C

Section: (none)

Explanation

Explanation/Reference:

QUESTION 162

Which two actions provide controlled Layer 2 network connectivity between virtual machines running on the same hypervisor? (Choose two.) A.

Use a virtual switch provided by the hypervisor.

- B. Use a virtual switch running as a separate virtual machine.
- C. Use VXLAN fabric after installing VXLAN tunneling drivers on the virtual machines.
- D. Use a single routed link to an external router on stick.
- E. Use a single trunk link to an external Layer2 switch.

Correct Answer: AD

Section: (none)

Explanation

Explanation/Reference:

QUESTION 163 What is a Type 1 hypervisor?

- A. runs directly on a physical server and depends on a previously installed operating system
- B. runs directly on a physical server and includes its own operating system
- C. runs on a virtual server and depends on an already installed operating system
- D. runs on a virtual server and includes its own operating system

Correct Answer: B

Section: (none)

Explanation

Explanation/Reference:

QUESTION 164 How is a data modeling language used?

- A. To enable data to be easily structured, grouped, validated, and replicated.
- B. To represent finite and well-defined network elements that cannot be changed.
- C. To model the flows of unstructured data within the infrastructure.
- D. To provide human readability to scripting languages.

Correct Answer: D

Section: (none)

Explanation

Explanation/Reference:

QUESTION 165

How does SSO work with HSRP to minimize network disruptions?

- A. It enables HSRP to elect another switch in the group as the active HSRP switch.
- B. It ensures fast failover in the case of link failure.
- C. It enables data forwarding along known routes following a switchover, while the routing protocol reconverges.
- D. It enables HSRP to failover to the standby RP on the same device.

Correct Answer: C

Section: (none)

Explanation

Explanation/Reference:

QUESTION 166

```
Tunnel100 is up, line protocol is up
Hardware is Tunnel
Internet address is 192.168.200.1/24
MTU 17912 bytes, BW 100 Kbit/sec, DLY 50000 usec,
  reliability 255/255, txload 1/255, rxload 1/255
Encapsulation TUNNEL, loopback not set
Keepalive set (10 sec), retries 3
Tunnel source 209.165.202.129 (GigabitEthernet0/1)
Tunnel Subblocks:
  src-track:
    Tunnel100 source tracking subblock associated with GigabitEthernet0/1
    Set of tunnels with source GigabitEthernet0/1, 1 members (includes iterators), on interface <OK>
Tunnel protocol/transport GRE/IP
  Key disabled, sequencing disabled
  Checksumming of packets disabled
Tunnel TTL 255, Fast tunneling enabled
Tunnel transport MTU 1476 bytes
```

Refer to the exhibit. A network engineer configures a GRE tunnel and enters the **show interface tunnel** command. What does the output confirm about the configuration?

- A. The keepalive value is modified from the default value.
- B. The physical interface MTU is 1476 bytes.
- C. The tunnel mode is set to the default.
- D. Interface tracking is configured.

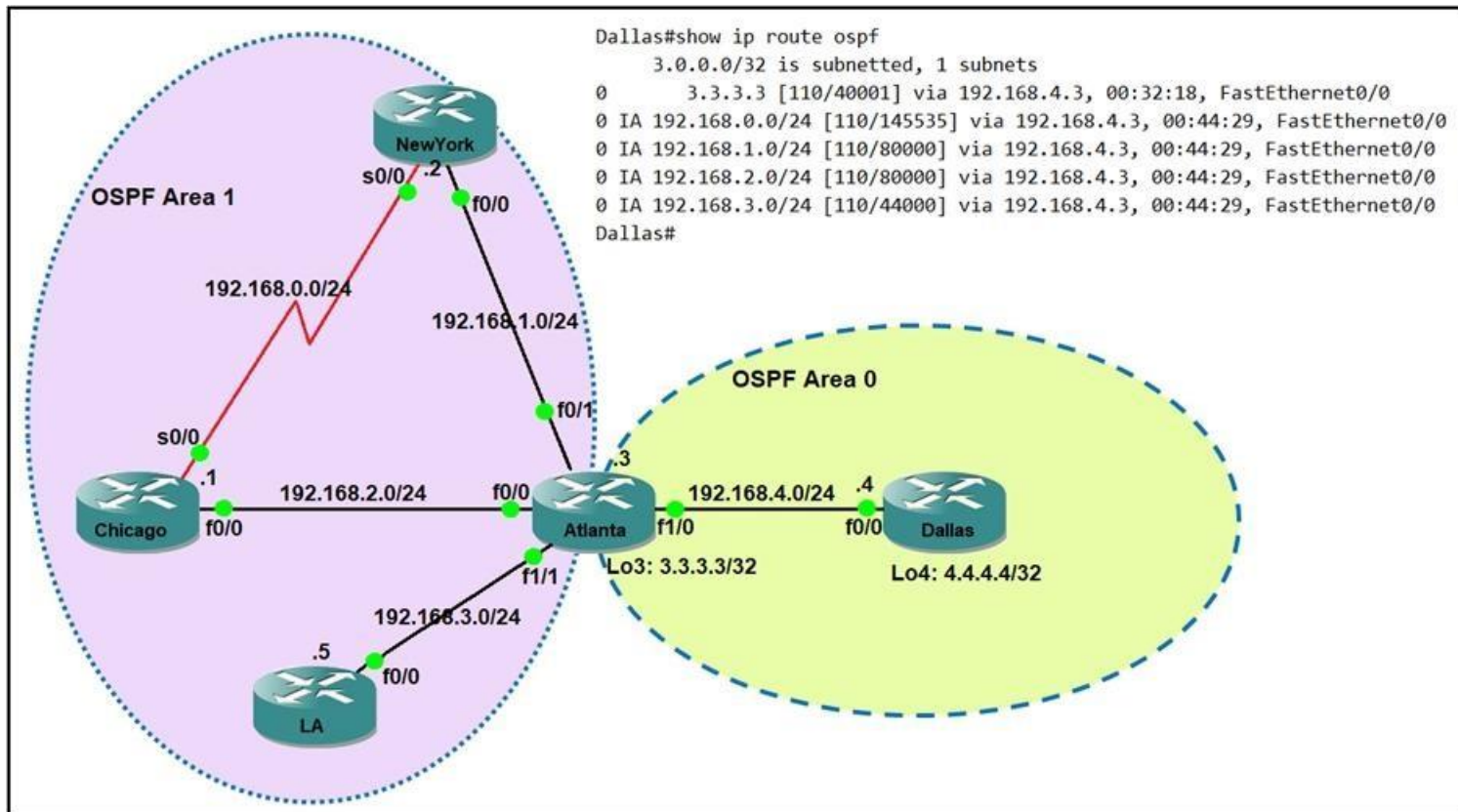
Correct Answer: C

Section: (none)

Explanation

Explanation/Reference:

QUESTION 167



Refer to the exhibit. Which command when applied to the Atlanta router reduces type 3 LSA flooding into the backbone area and summarizes the inter-area routes on the Dallas router?

- A. Atlanta(config-router)#area 0 range 192.168.0.0 255.255.252.0
- B. Atlanta(config-router)#area 1 range 192.168.0.0 255.255.248.0
- C. Atlanta(config-router)#area 0 range 192.168.0.0 255.255.248.0
- D. Atlanta(config-router)#area 1 range 192.168.0.0 255.255.252.0

Correct Answer: D

Section: (none)

Explanation

Explanation/Reference:

QUESTION 168

DRAG DROP

Drag and drop the characteristics from the left onto the infrastructure types on the right.

Select and Place:

Correct Answer:

Section: (none)

Explanation

Explanation/Reference:

QUESTION 169

```
<errors xmlns="urn:ietf:params:xml:ns:yang:ietf-restconf">
  <error>
    <error-message>End-of-file reached in XML stream</error-message>
    <error-path>/ietf-interfaces:interfaces/interface=GigabitEthernet2</error-path>
    <error-tag>malformed-message</error-tag>
    <error-type>application</error-type>
  </error>
</errors>
```

Refer to the exhibit. An engineer is using XML in an application to send information to a RESTCONF-enabled device. After sending the request, the engineer gets this response message and an HTTP response code of 400. What do these responses tell the engineer?

- A. The Accept header sent was application/xml.
- B. POST was used instead of PUT to update.
- C. The Content-Type header sent was application/xml.
- D. A JSON body was used.

Correct Answer: C

Section: (none)

Explanation

Explanation/Reference:

QUESTION 170 How does the RIB differ from the FIB?

- A. The FIB maintains network topologies and routing tables. The RIB is a list of routes to particular network destinations.
- B. The FIB includes many routes to a single destination. The RIB is the best route to a single destination.
- C. The RIB is used to create network topologies and routing tables. The FIB is a list of routes to particular network destinations.
- D. The RIB includes many routes to the same destination prefix. The FIB contains only the best route.

Correct Answer: C

Section: (none)

Explanation

Explanation/Reference:

QUESTION 171

An engineer must configure interface GigabitEthernet0/0 for VRRP group 10. When the router has the highest priority in the group, it must assume the master role. Which command set must be added to the initial configuration to accomplish this task?

**Initial Configuration interface
GigabitEthernet0/0 description To
IDF A 38-24-044.40 ip address
172.16.13.2 255.255.255.0**

- A. **standby 10 ip 172.16.13.254
255.255.255.0 standby 10 preempt**
- B. **vrrp group 10 ip 172.16.13.254
255.255.255.0 vrrp group 10 priority**
- C. **standby 10 ip 172.16.13.254 standy 10
priority 120**
- D. **vrrp 10 ip 172.16.13.254 vrrp 10 preempt**

Correct Answer: C

Section: (none)

Explanation**Explanation/Reference:****QUESTION 172**

```
aaa new-model
aaa authentication login default local-case enable
aaa authentication login ADMIN local-case
username CCNP secret Str0ngP@ssw0rd!
line 0 4
  login authentication ADMIN
```

Refer to the exhibit. An engineer must create a configuration that executes the **show run** command and then terminates the session when user CCNP logs in. Which configuration change is required?

- A. Add the **access-class** keyword to the **username** command.
- B. Add the **autocommand** keyword to the **aaa authentication** command.
- C. Add the **access-class** keyword to the **aaa authentication** command.
- D. Add the **autocommand** keyword to the **username** command.

Correct Answer: D

Section: (none)

Explanation**Explanation/Reference:****QUESTION 173**

DRAG DROP

Drag and drop the characteristics from the left onto the routing protocols they describe on the right.

Select and Place:

maintains alternative loop-free backup path if available

Link State Protocol

selects routes using the DUAL algorithm

supports only equal multipath load balancing

Advanced Distance Vector Protocol

quickly computes new path upon link failure

OSPF

EIGRP

OSPF

Link State Protocol

supports only equal multipath load balancing

quickly computes new path upon link failure

EIGRP

maintains alternative loop-free backup path if available

selects routes using the DUAL algorithm

Advanced Distance Vector Protocol

Correct Answer:

Section: (none)
Explanation

Explanation/Reference:

QUESTION 174 What are two reasons a company would choose a cloud deployment over an on-prem deployment? (Choose two.)

- A. Cloud costs adjust up or down depending on the amount of resources consumed. On-prem costs for hardware, power, and space are on-going regardless of usage.
- B. Cloud resources scale automatically to an increase in demand. On-prem requires additional capital expenditure.
- C. In a cloud environment, the company is in full control of access to their data. On-prem risks access to data due to service provider outages.
- D. In a cloud environment, the company controls technical issues. On-prem environments rely on the service provider to resolve technical issues.
- E. Cloud deployments require long implementation times due to capital expenditure processes. On-prem deployments can be accomplished quickly using operational expenditure processes.

Correct Answer: AB

Section: (none)

Explanation

Explanation/Reference:

QUESTION 175

```
DSW1#sh spanning-tree
MST1
Spanning tree enabled protocol mstp
Root ID    Priority    32769
Address    0018.7363.4300
Cost       2
Port       13 (FastEthernet1/0/11)
Hello Time 2 sec  Max Age 20 sec  Forward Delay 15 sec

Bridge ID  Priority    32769 (priority 32768 sys-id-ext 1)
Address    001b.0d8e.e080
Hello Time 2 sec  Max Age 20 sec  Forward Delay 15 sec

Interface      Role Sts Cost      Prio.Nbr Type
-----
Fa1/0/7        Desg FWD 2         128.9   P2p Bound (PVST)
Fa1/0/10       Desg FWD 2         128.12  P2p Bound (PVST)
Fa1/0/11       Root FWD 2         128.13  P2p
Fa1/0/12       Altn BLK 2         128.14  P2p

DSW1#sh spanning-tree mst

##### MST1    vlans mapped: 10,20
Bridge        address 001b.0d8e.e080 priority 32769 (32768 sysid 1)
Root          address 0018.7363.4300 priority 32769 (32768 sysid 1)
              port Fa1/0/11 cost 2 rem hops 19
!
... output omitted
!
```

VCEUp

Refer to the exhibit. Which two commands ensure that DSW1 becomes the root bridge for VLAN 10 and 20? (Choose two.)

- A. **spanning-tree mst 1 priority 4096**
- B. **spanning-tree mst 1 root primary**
- C. **spanning-tree mst vlan 10,20 priority root**
- D. **spanning-tree mst 1 priority 1**
- E. **spanning-tree mstp vlan 10,20 root primary**

Correct Answer: AB

Section: (none)

Explanation

Explanation/Reference:

QUESTION 176 Which technology is used to provide Layer 2 and Layer 3 logical networks in the Cisco SD-Access architecture?

- A. underlay network
- B. VPN routing/forwarding
- C. easy virtual network
- D. overlay network

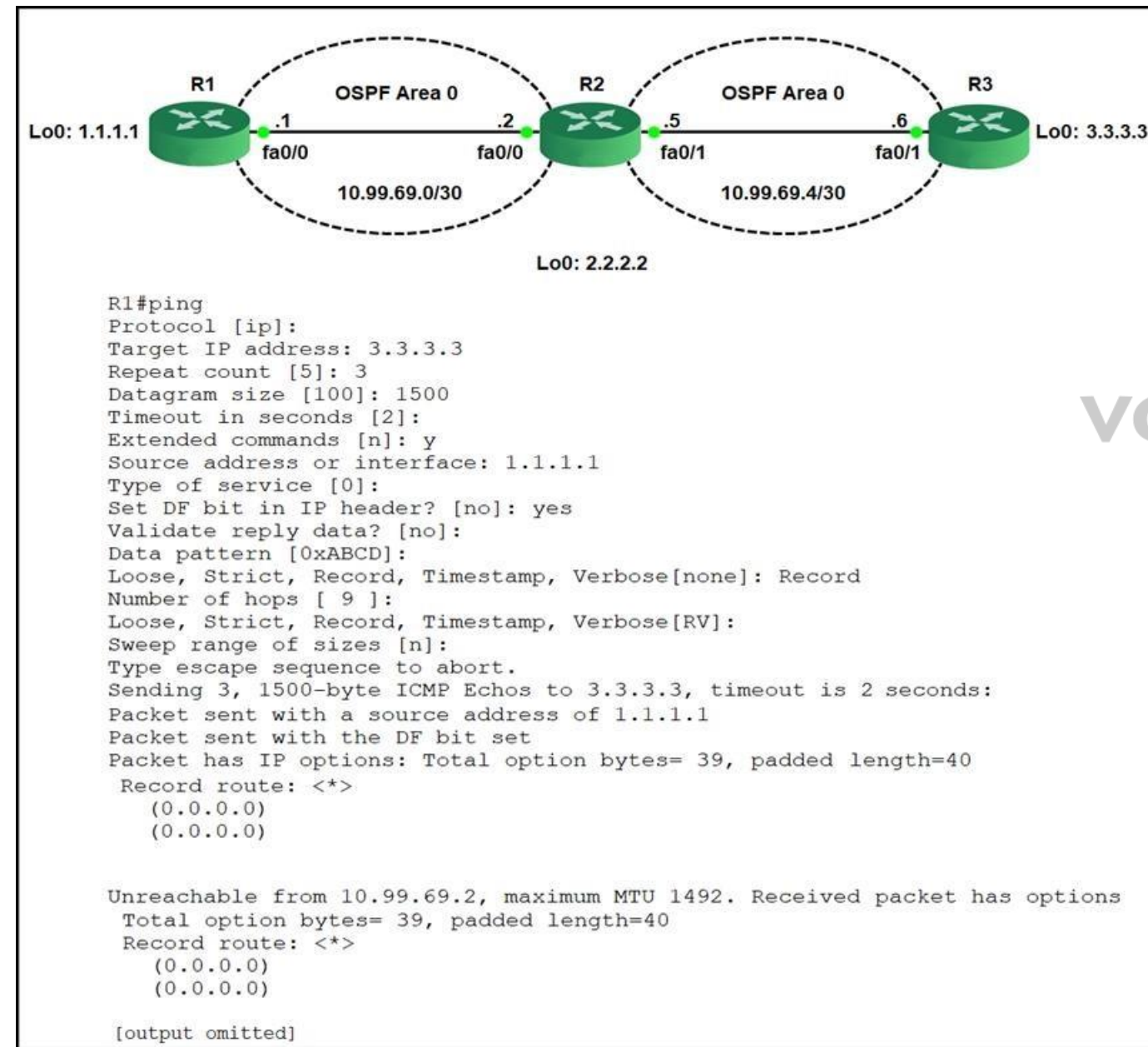
Correct Answer: D

Section: (none)

Explanation

Explanation/Reference:

QUESTION 177



Refer to the exhibit. R1 is able to ping the R3 fa0/1 interface. Why do the extended pings fail?

- A. The maximum packet size accepted by the command is 1476 bytes.
- B. The DF bit has been set.
- C. R3 is missing a return route to 10.99.69.0/30.

D. R2 and R3 do not have an OSPF adjacency.

Correct Answer: B

Section: (none)

Explanation

Explanation/Reference:

QUESTION 178

```
!  
interface FastEthernet0/1  
 ip address 209.165.200.225 255.255.255.224  
 ip nat outside  
!  
interface FastEthernet0/2  
 ip address 10.10.10.1 255.255.255.0  
 ip nat inside  
!  
access-list 10 permit 10.10.10.0 0.0.0.255  
!
```

Refer to the exhibit. Which command allows hosts that are connected to FastEthernet0/2 to access the Internet?

- A. ip nat inside source list 10 interface FastEthernet0/2 overload
- B. ip nat inside source list 10 interface FastEthernet0/1 overload
- C. ip nat outside source static 209.165.200.225 10.10.10.0 overload
- D. ip nat outside source list 10 interface FastEthernet0/2 overload

Correct Answer: B

Section: (none)

Explanation

Explanation/Reference:

QUESTION 179 Which antenna type should be used for a site-to-site wireless connection?

- A. patch
- B. dipole
- C. omnidirectional
- D. Yagi

Correct Answer: D

Section: (none)

Explanation

Explanation/Reference:

QUESTION 180


```
R1
interface GigabitEthernet0/0
ip address 192.168.250.2 255.255.255.0
standby 20 ip 192.168.250.1
standby 20 priority 120
```

```
R2
interface GigabitEthernet0/0
ip address 192.168.250.3 255.255.255.0
standby 20 ip 192.168.250.1
standby 20 priority 110
```

Refer to the exhibit. What are two effects of this configuration? (Choose two.)

- A. If R1 goes down, R2 becomes active but reverts to standby when R1 comes back online.
- B. If R2 goes down, R1 becomes active but reverts to standby when R2 comes back online.
- C. R1 becomes the active router.
- D. R1 becomes the standby router.
- E. If R1 goes down, R2 becomes active and remains the active device when R1 comes back online.

Correct Answer: CE

Section: (none)

Explanation

Explanation/Reference:

VCEUp

QUESTION 181 What is the difference between CEF and process switching?

- A. CEF processes packets that are too complex for process switching to manage.
- B. Process switching is faster than CEF.
- C. CEF uses the FIB and the adjacency table to make forwarding decisions, whereas process switching punts each packet.
- D. CEF is more CPU-intensive than process switching.

Correct Answer: C

Section: (none)

Explanation

Explanation/Reference:

QUESTION 182

```
Router2# show policy-map control-plane
```

```
Control Plane
```

```
Service-policy input:CISCO
```

```
Class-map:CISCO (match-all)
```

```
20 packets, 11280 bytes
```

```
5 minute offered rate 0 bps, drop rate 0 bps
```

```
Match:access-group 120
```

```
police:
```

```
8000 bps, 1500 limit, 1500 extended limit
```

```
conformed 15 packets, 6210 bytes; action:transmit
```

```
exceeded 5 packets, 5070 bytes; action:drop
```

```
violated 0 packets, 0 bytes; action:drop
```

```
conformed 0 bps, exceed 0 bps, violate 0 bps
```

```
Class-map:class-default (match-any)
```

```
105325 packets, 11415151 bytes
```

```
5 minute offered rate 0 bps, drop rate 0 bps
```

```
Match:any
```

Refer to the exhibit. An engineer configures CoPP and enters the **show** command to verify the implementation. What is the result of the configuration?

- A. All traffic will be policed based on access-list 120.
- B. If traffic exceeds the specified rate, it will be transmitted and remarked.
- C. Class-default traffic will be dropped.
- D. ICMP will be denied based on this configuration.

Correct Answer: A

Section: (none)

Explanation

Explanation/Reference:

QUESTION 183

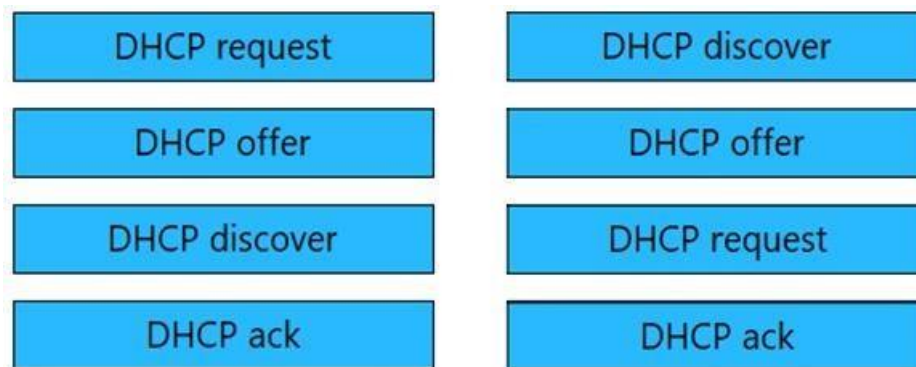
DRAG DROP

Drag and drop the DHCP messages that are exchanged between a client and an AP into the order they are exchanged on the right.

Select and Place:

DHCP request	Step 1
DHCP offer	Step 2
DHCP discover	Step 3
DHCP ack	Step 4

Correct Answer:

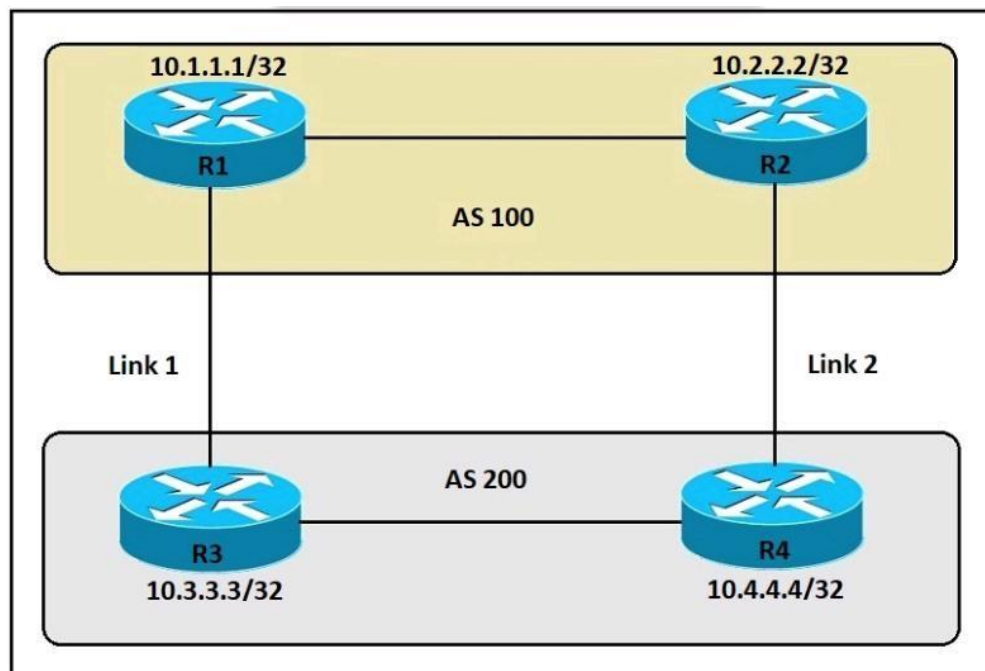


Section: (none)

Explanation

Explanation/Reference:

QUESTION 184



VCEup

Refer to the exhibit. An engineer must ensure that all traffic entering AS 200 from AS 100 chooses Link 2 as an entry point. Assume that all BGP neighbor relationships have been formed and that the attributes have not been changed on any of the routers. Which configuration accomplishes this task?

- A. R3(config)#**route-map PREPEND permit 10**
 R3(config-route-map)#**set as-path prepend 200 200 200**
- R3(config)#**router bgp 200**
 R3#(config-router)#**neighbor 10.1.1.1 route-map PREPEND out**
- B. R4(config)#**route-map PREPEND permit 10**
 R4(config-route-map)#**set as-path prepend 100 100 100**
- R4(config)#**router bgp 200**
 R4(config-router)#**neighbor 10.2.2.2 route-map PREPEND in**
- C. R4(config)#**route-map PREPEND permit 10**
 R4(config-route-map)#**set as-path prepend 200 200 200**
- R4(config)#**router bgp 200**
 R4(config-router)#**neighbor 10.2.2.2 route-map PREPEND out**

D. R3(config)#**route-map PREPEND permit 10**
R3(config-route-map)#**set as-path prepend 100 100 100**

R3(config)#**router bgp 200**
R3(config-router)#**neighbor 10.1.1.1 route-map PREPEND in**

Correct Answer: A

Section: (none)

Explanation

Explanation/Reference:

QUESTION 185

DRAG DROP

Drag and drop the threat defense solutions from the left onto their descriptions on the right.

Select and Place:

Correct Answer:

Section: (none)

Explanation

Explanation/Reference:

QUESTION 186 An engineer reviews a router's logs and discovers the following entry. What is the event's logging severity level?

Router# *Jan 01 38:24:04.401: %LINK-3-UPDOWN: Interface GigabitEthernet0/1, changed state to up

- A. error
- B. warning
- C. informational
- D. notification

Correct Answer: A

Section: (none)

Explanation

Explanation/Reference:

QUESTION 187 Which DHCP option provides the CAPWAP APs with the address of the wireless controller(s)?

- A. 43
- B. 66
- C. 69
- D. 150

Correct Answer: A

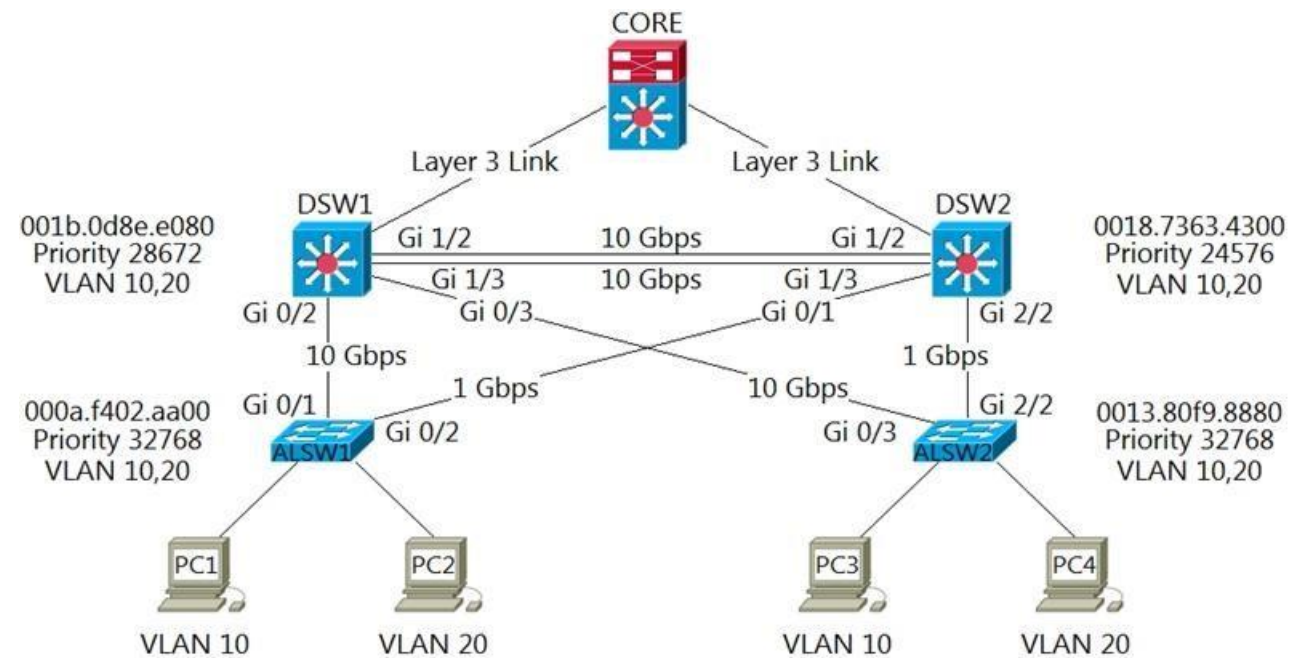
Section: (none)

Explanation

Explanation/Reference:

QUESTION 188

Refer to the exhibit.



Which two commands ensure that DSW1 becomes root bridge for VLAN 10? (Choose two.)

- A. DSW1(config)#spanning-tree vlan 10 priority 4096
- B. DSW1(config)#spanning-tree vlan 10 priority root
- C. DSW2(config)#spanning-tree vlan 10 priority 61440
- D. DSW1(config)#spanning-tree vlan 10 port-priority 0
- E. DSW2(config)#spanning-tree vlan 20 priority 0

Correct Answer: AB

Section: (none)

Explanation

Explanation/Reference:

QUESTION 189 Which action is performed by Link Management Protocol in a Cisco StackWise Virtual domain?

- A. It determines which switch becomes active or standby.
- B. It determines if the hardware is compatible to form the StackWise Virtual domain.
- C. It rejects any unidirectional link traffic forwarding.
- D. It discovers the StackWise domain and brings up SVL interfaces.

Correct Answer: C

Section: (none)

Explanation

Explanation/Reference:

QUESTION 190 In a wireless network environment, what is calculated using the numerical values of the transmitter power level, cable loss, and antenna gain?

- A. SNR
- B. RSSIC. EIRP
- D. dBi

Correct Answer: C

Section: (none)

Explanation

Explanation/Reference:

Reference: <https://www.cisco.com/c/en/us/support/docs/wireless-mobility/wireless-lan-wlan/23231-powervalues-23231.html>

QUESTION 191

Refer to the exhibit.

```
monitor session 1 source vlan 10 - 12 rx
monitor session 1 destination interface gigabitethernet0/1
```

An engineer must configure a SPAN session.

What is the effect of the configuration?

- A. Traffic received on VLANs 10, 11, and 12 is copied and sent to interface g0/1.
- B. Traffic sent on VLANs 10 and 12 only is copied and sent to interface g0/1.
- C. Traffic sent on VLANs 10, 11, and 12 is copied and sent to interface g0/1.
- D. Traffic received on VLANs 10 and 12 only is copied and sent to interface g0/1.

Correct Answer: A

Section: (none)

Explanation

Explanation/Reference:

QUESTION 192

Refer to the exhibit.

```
Router#sh run | b vty
line vty 0 4
  session-timeout 30
  exec-timeout 120 0
  session-limit 30
  login local
line vty 5 15
  session-timeout 30
  exec-timeout 30 0
  session-limit 30
  login local
```

Security policy requires all idle exec sessions to be terminated in 600 seconds.

Which configuration achieves this goal?

- A. line vty 0 15
absolute-timeout 600
- B. line vty 0 15 no exec-timeout
- C. line vty 0 15
exec-timeout 10 0
- D. line vty 0 4 exec-timeout 600

Correct Answer: C

Section: (none)

Explanation

Explanation/Reference:

QUESTION 193 What mechanism does PIM use to forward multicast traffic?

- A. PIM sparse mode uses a pull model to deliver multicast traffic.
- B. PIM dense mode uses a pull model to deliver multicast traffic.
- C. PIM sparse mode uses receivers to register with the RP.
- D. PIM sparse mode uses a flood and prune model to deliver multicast traffic.

Correct Answer: A

Section: (none)

Explanation

Explanation/Reference:

QUESTION 194 In a Cisco DNA Center Plug and Play environment, why would a device be labeled unclaimed?

- A. The device has not been assigned a workflow.
- B. The device could not be added to the fabric.
- C. The device had an error and could not be provisioned.
- D. The device is from a third-party vendor.

Correct Answer: C

Section: (none)

Explanation

Explanation/Reference:

QUESTION 195 What are two considerations when using SSO as a network redundancy feature? (Choose two.)

- A. requires synchronization between supervisors in order to guarantee continuous connectivity
- B. the multicast state is preserved during switchover
- C. must be combined with NSF to support uninterrupted Layer 3 operations
- D. both supervisors must be configured separately
- E. must be combined with NSF to support uninterrupted Layer 2 operations

Correct Answer: AC

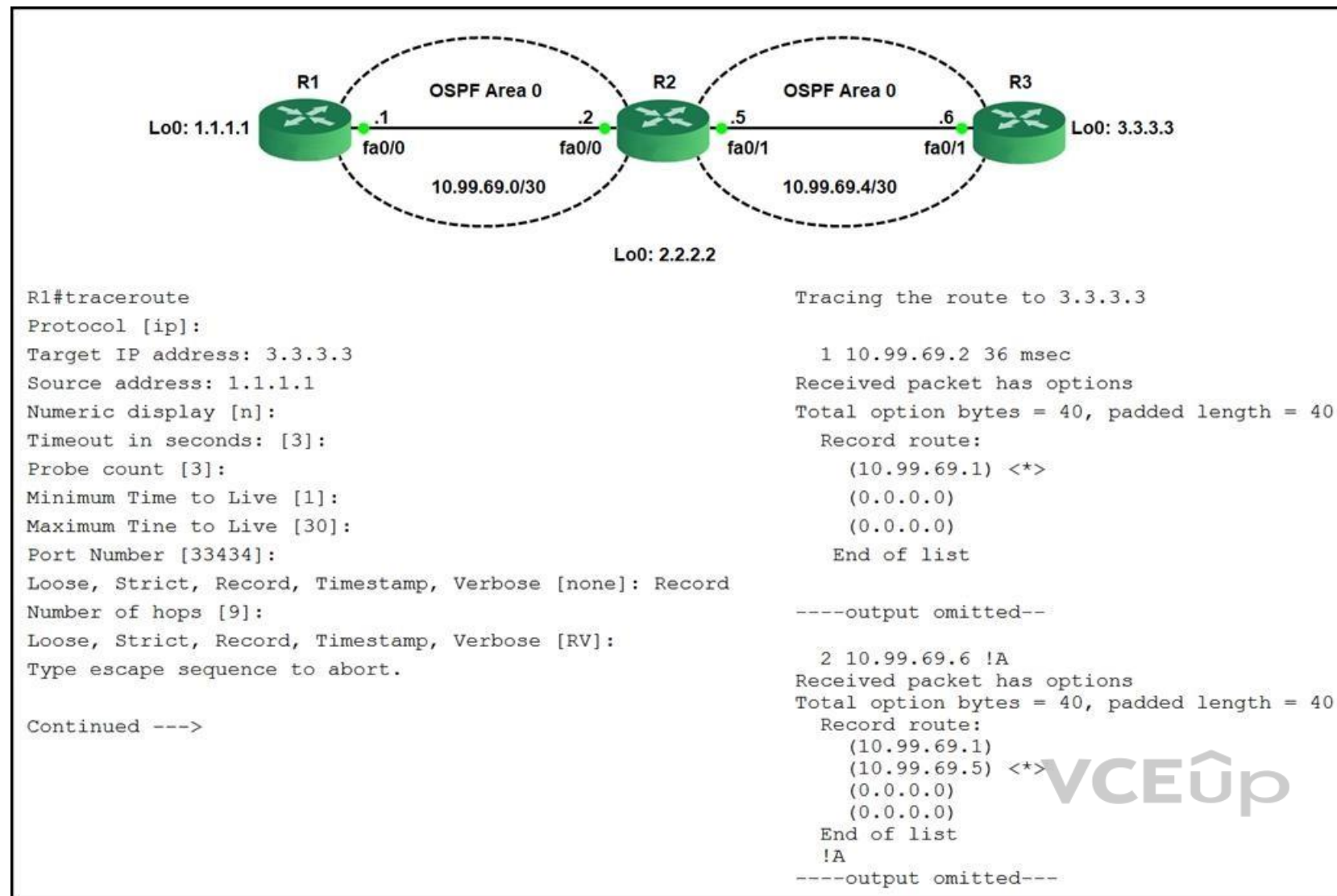
Section: (none)

Explanation

Explanation/Reference:

QUESTION 196

Refer to the exhibit.



The traceroute fails from R1 to R3.

What is the cause of the failure?

- A. An ACL applied inbound on loopback0 of R2 is dropping the traffic.
- B. The loopback on R3 is in a shutdown state.
- C. Redistribution of connected routes into OSPF is not configured.
- D. An ACL applied inbound on fa0/1 of R3 is dropping the traffic.

Correct Answer: D

Section: (none)

Explanation

Explanation/Reference:

QUESTION 197 What is the purpose of the LISP routing and addressing architecture?

- A. It creates two entries for each network node, one for its identity and another for its location on the network.
- B. It allows LISP to be applied as a network virtualization overlay through encapsulation.
- C. It allows multiple instances of a routing table to co-exist within the same router.
- D. It creates head-end replication used to deliver broadcast and multicast frames to the entire network.

Correct Answer: A

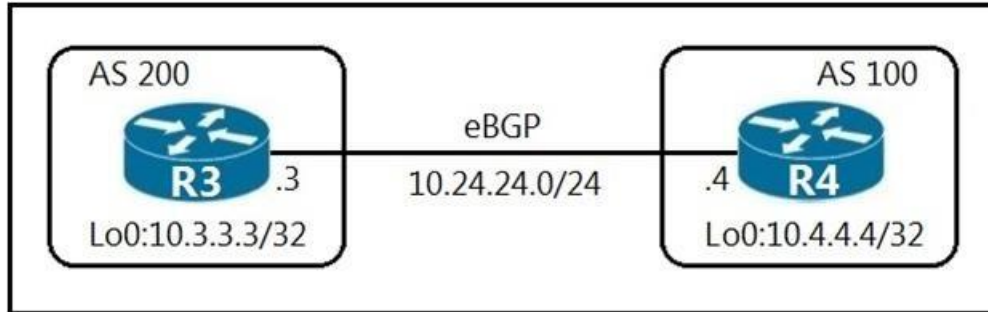
Section: (none)

Explanation

Explanation/Reference:

QUESTION 198

Refer to the exhibit.



An engineer must establish eBGP peering between router R3 and router R4. Both routers should use their loopback interfaces as the BGP router ID.

Which configuration set accomplishes this task?

- A. R3(config)#**router bgp 200**
 R3(config-router)#**neighbor 10.4.4.4 remote-as 100**
 R3(config-router)# **neighbor 10.4.4.4 update-source Loopback0**
- R4(config)#**router bgp 100**
 R4(config-router)#**neighbor 10.3.3.3 remote-as 200**
 R4(config-router)#**network 10.3.3.3 update-source Loopback0**
- B. R3(config)#**router bgp 200**
 R3(config-router)#**neighbor 10.24.24.4 remote-as 100**
 R3(config-router)#**neighbor 10.24.24.4 update-source Loopback0**
- R4(config)#**router bgp 100**
 R4(config-router)#**neighbor 10.24.24.3 remote-as 200**
 R4(config-router)#**neighbor 10.24.24.3 update-source Loopback0**
- C. R3(config)#**router bgp 200**
 R3(config-router)#**neighbor 10.4.4.4 remote-as 100**
 R3(config-router)#**bgp router-id 10.3.3.3**
- R4(config)#**router bgp 100**
 R4(config-router)#**neighbor 10.3.3.3 remote-as 200**
 R4(config-router)#**bgp router-id 10.4.4.4**
- D. R3(config)#**router bgp 200**
 R3(config-router)#**neighbor 10.24.24.4 remote-as 100**
 R3(config-router)#**bgp router-id 10.3.3.3**
- R4(config)#**router bgp 100**
 R4(config-router)#**neighbor 10.24.24.3 remote-as 200**
 R4(config-router)#**bgp router-id 10.4.4.4**

Correct Answer: A

Section: (none)

Explanation

Explanation/Reference:

QUESTION 199

Refer to the exhibit.

```
aaa new-model
aaa authentication login authorizationlist tacacs+
tacacs-server host 192.168.0.202
tacacs-server key ciscotestkey
line vty 04
login authentication authorizationlist
```

What is the effect of this configuration?

- A. The device will allow users at 192.168.0.202 to connect to vty lines 0 through 4 using the password **ciscotestkey**.
- B. The device will authenticate all users connecting to vty lines 0 through 4 against TACACS+.
- C. The device will allow only users at 192.168.0.202 to connect to vty lines 0 through 4.
- D. When users attempt to connect to vty lines 0 through 4, the device will authenticate them against TACACS+ if local authentication fails.

Correct Answer: B

Section: (none)

Explanation

Explanation/Reference:

QUESTION 200

What function does VXLAN perform in a Cisco SD-Access deployment?

- A. policy plane forwarding
- B. control plane forwarding
- C. data plane forwarding
- D. systems management and orchestration

Correct Answer: C

Section: (none)

Explanation

Explanation/Reference:

QUESTION 201 Which method displays text directly into the active console with a synchronous EEM applet policy?

- A. event manager applet boom event syslog
pattern 'UP' action 1.0 gets 'logging directly
to console' B. event manager applet boom
event syslog pattern 'UP'
action 1.0 string 'logging directly to console'
- C. event manger applet boom event syslog
pattern 'UP'
action 1.0 syslog priority direct msg 'logging directly to console'
- D. event manager applet boom
event syslog pattern 'UP' action 1.0 puts
'logging directly to console'

Correct Answer: D

Section: (none)

Explanation

Explanation/Reference:

QUESTION 202 Which deployment option of Cisco NGFW provides scalability?

- A. inline tap
- B. high availability
- C. clustering
- D. tap

Correct Answer: C

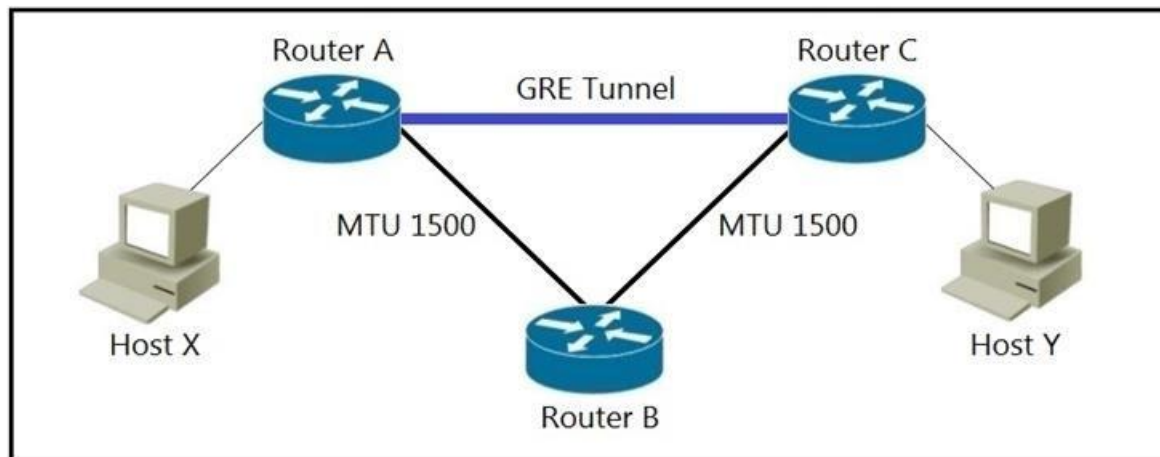
Section: (none)

Explanation

Explanation/Reference:

QUESTION 203

Refer to the exhibit.



VCEUp

MTU has been configured on the underlying physical topology, and no MTU command has been configured on the tunnel interfaces.

What happens when a 1500-byte IPv4 packet traverses the GRE tunnel from host X to host Y, assuming the DF bit is cleared?

- A. The packet is discarded on router B
- B. The packet arrives on router C without fragmentation
- C. The packet arrives on router C fragmented
- D. The packet is discarded on router A

Correct Answer: C

Section: (none)

Explanation

Explanation/Reference:

QUESTION 204

Refer to the exhibit.

```

vlan 222
  remote-span
!
vlan 223
  remote-span
!
monitor session 1 source interface FastEthernet0/1 tx
monitor session 1 source interface FastEthernet0/2 rx
monitor session 1 source interface port-channel 5
monitor session 1 destination remote vlan 222
!
```

These commands have been added to the configuration of a switch.

Which command flags an error if it is added to this configuration?

- A. monitor session 1 source interface port-channel 6
- B. monitor session 1 source vlan 10
- C. monitor session 1 source interface FastEthernet0/1 rx
- D. monitor session 1 source interface port-channel 7, port-channel 8

Correct Answer: B

Section: (none)

Explanation

Explanation/Reference:

QUESTION 205 Which element enables communication between guest VMs within a virtualized environment?

- A. hypervisor
- B. virtual router
- C. vSwitch
- D. pNIC

Correct Answer: C

Section: (none)

Explanation

Explanation/Reference:

Explanation:

Each VM is provided with a virtual NIC (vNIC) that is connected to the virtual switch. Multiple vNICs can connect to a single vSwitch, allowing VMs on a physical host to communicate with one another at layer 2 without having to go out to a physical switch

QUESTION 206 Which characteristic distinguishes Ansible from Chef?

- A. Ansible uses Ruby to manage configurations. Chef uses YAML to manage configurations.
- B. The Ansible server can run on Linux, Unix or Windows. The Chef server must run on Linux or Unix.
- C. Ansible pushes the configuration to the client. Chef client pulls the configuration from the server.
- D. Ansible lacks redundancy support for the master server. Chef runs two masters in an active/active mode.

Correct Answer: C

Section: (none)

Explanation

Explanation/Reference:

Explanation:

Ansible works by connecting to your nodes and pushing out small programs, called “Ansible modules” to them. These programs are written to be resource models of the desired state of the system. Ansible then executes these modules (over SSH by default), and removes them when finished.

Chef is a much older, mature solution to configure management. Unlike Ansible, it does require an installation of an agent on each server, named chef-client. Also, unlike Ansible, it has a Chef server that each client pulls configuration from.

QUESTION 207

DRAG DROP

Drag and drop the characteristics from the left onto the correct infrastructure deployment type on the right.

Select and Place:

Correct Answer:

Section: (none)

Explanation

Explanation/Reference:

QUESTION 208

An engineer is configuring GigabitEthernet1/0/0 for VRRP. When the router has the highest priority in group 5, it must assume the master role.

Which command set should the engineer add to the configuration to accomplish this task?

interface GigabitEthernet1/0/0
description To IDF A 38-70-774-10
ip address 172.16.13.2 255.255.255.0

- A. **standby 5 ip 172.16.13.254**
standby 5 priority 100 standby 5
track 1 decrement 10
- B. **standby 5**
ip 172.16.13.254 standby 5
priority 100 standby 5 preempt
- C. **vrrp 5 ip 172.16.13.254 vrrp 5**
priority 100
- D. **vrrp 5 ip 172.16.13.254**
255.255.255.0 vrrp 5 track 1
decrement 10 vrrp 5 preempt

Correct Answer: C

Section: (none)

Explanation

Explanation/Reference:

QUESTION 209 Which two security features are available when implementing NTP? (Choose two.)

- A. encrypted authentication mechanism
- B. symmetric server passwords
- C. clock offset authentication
- D. broadcast association mode
- E. access list-based restriction scheme

Correct Answer: AE

Section: (none)

Explanation

Explanation/Reference:

QUESTION 210 How does the EIGRP metric differ from the OSPF metric?

- A. The EIGRP metric is calculated based on bandwidth only. The OSPF metric is calculated on delay only.
- B. The EIGRP metric is calculated based on delay only. The OSPF metric is calculated on bandwidth and delay.
- C. The EIGRP metric is calculated based on bandwidth and delay. The OSPF metric is calculated on bandwidth only.
- D. The EIGRP metric is calculated based on hop count and bandwidth. The OSPF metric is calculated on bandwidth and delay.

Correct Answer: C

Section: (none)

Explanation

Explanation/Reference:

Explanation:

By default, EIGRP metric is calculated:

metric = bandwidth + delay While

OSPF is calculated by:

OSPF metric = Reference bandwidth / Interface bandwidth in bps

QUESTION 211 Which entity is responsible for maintaining Layer 2 isolation between segments in a VXLAN environment?

- A. VNID
- B. switch fabric
- C. VTEP
- D. host switch

Correct Answer: A

Section: (none)

Explanation

Explanation/Reference:

QUESTION 212 What is the responsibility of a secondary WLC?

- A. It enables Layer 2 and Layer 3 roaming between itself and the primary controller.
- B. It registers the LAPs if the primary controller fails.
- C. It avoids congestion on the primary controller by sharing the registration load on the LAPs.
- D. It shares the traffic load of the LAPs with the primary controller.

Correct Answer: A

Section: (none)

Explanation

Explanation/Reference:

QUESTION 213 In a Cisco SD-Access fabric, which control plane protocol is used for mapping and resolving endpoints?

- A. DHCP
- B. VXLAN

- C. SXP
- D. LISP

Correct Answer: D

Section: (none)

Explanation

Explanation/Reference:

QUESTION 214

Refer to the exhibit.

R1	R2
key chain cisco123 key 1 key-string Cisco123!	key chain cisco123 key 1 key-string Cisco123!
Ethernet0/0 - Group 10 State is Active 8 state changes, last state change 00:02:49 Virtual IP address is 192.168.0.1 Active virtual MAC address is 0000.0c07.ac0a	Ethernet0/0 - Group 10 State is Active 17 state changes, last state change 00:02:17 Virtual IP address is 192.168.0.1 Active virtual MAC address is 0000.0c07.ac0a

An engineer is installing a new pair of routers in a redundant configuration.

Which protocol ensures that traffic is not disrupted in the event of a hardware failure?

- A. HSRPv1
- B. GLBP
- C. VRRP
- D. HSRPv2

Correct Answer: A

Section: (none)

Explanation

Explanation/Reference:

Explanation:

The “virtual MAC address” is 0000.0c07.acXX (XX is the hexadecimal group number) so it is using HSRPv1. HSRP Version 2 uses a new MAC address which ranges from 0000.0C9F.F000 to 0000.0C9F.FFFF.