

HPE0-J57.VCEplus.premium.exam.59q

Number: HPE0-J57  
Passing Score: 800  
Time Limit: 120 min  
File Version: 1.0



Website: <https://vceplus.com>

VCE to PDF Converter: <https://vceplus.com/vce-to-pdf/>

Facebook: <https://www.facebook.com/VCE.For.All.VN/>

Twitter : [https://twitter.com/VCE\\_Plus](https://twitter.com/VCE_Plus)

HPE0-J57

Designing HPE Storage Solutions



## Exam A

### QUESTION 1

Which HPE 3PAR feature improves CPU utilization, reduces latency, and improves IOPS?

- A. Zero Detect
- B. Persistent Cache
- C. Express Indexing
- D. Express Writes

**Correct Answer:** D

**Section:** (none)

**Explanation**

**Explanation/Reference:**

**QUESTION 2** While demonstrating an HPE 3PAR StoreServ 9450 array, the customer asks you to demonstrate the File Persona features.

Which objects do you need to create to demonstrate these features? (Choose two.)

- A. File share
- B. Storage container
- C. Host
- D. Remote copy group
- E. Virtual file server

**Correct Answer:** AE

**Section:** (none)

**Explanation**

**Explanation/Reference:**

**QUESTION 3** Which protocols are currently used in the front end by HPE 3PAR StoreServ systems? (Choose two.)

- A. iSCSI
- B. Infiniband
- C. SAS
- D. NVMe
- E. FC

**Correct Answer:** AE

**Section:** (none)

**Explanation**

**Explanation/Reference:**

**QUESTION 4** A customer needs to expand an HPE StoreVirtual VSA based cluster with two additional VSA instances.

What do you need to consider when designing the new VSA instances?

- A. They will require downtime to re-balance the resources within the cluster.



- B. They must be configured into a new management group.
- C. They must be of equal or greater capacity than the existing instances in a cluster.
- D. They can only have equal to or smaller capacity compared to the existing instances.

**Correct Answer:** C

**Section:** (none)

**Explanation**

**Explanation/Reference:**

#### QUESTION 5

A customer with an HPE 3PAR StoreServ needs to upgrade their aging backup solution to a more advanced solution using snapshots and deduplication.

Which HPE products would meet the customer's needs? (Choose two.)

- A. HPE 3PAR File Persona
- B. HPE StoreEver
- C. HPE 3PAR Remote Copy
- D. HPE StoreOnce
- E. HPE Recovery Manager Central

**Correct Answer:** D

**Section:** (none)

**Explanation**

**Explanation/Reference:**

#### QUESTION 6

A customer's growing environment has a mix of HPE 3PAR StoreServ 8200 with 10K HDD, HPE 3PAR StoreServ 9450, and HPE 3PAR StoreServ 2080D with 3 tiers of storage deployed in the same data center. The customer needs to optimize performance by being able to move workloads to the most appropriate array as needed.

Which solution enables the customer to achieve this goal?

- A. HPE OneView to automate cpg migration based on user defined policies.
- B. HPE 3PAR Remote Copy in a Synchronous Long Distance topology.
- C. HPE Smart SAN to provide autonomic federated management.
- D. HPE 3PAR Peer Motion with SSMC to manage storage federation.

**Correct Answer:** D

**Section:** (none)

**Explanation**

**Explanation/Reference:**

**QUESTION 7** Which type of networking switch handles both Ethernet and Fibre Channel traffic?

- A. edge
- B. virtual
- C. director
- D. converged

**Correct Answer:** D

**Section:** (none)

**Explanation****Explanation/Reference:**

**QUESTION 8** Which file protocols are commonly used in HPE StoreOnce environment?

(Choose two.)

- A. CIFS
- B. NTFS
- C. VFS
- D. ZFS
- E. NFS

**Correct Answer:** AE

**Section:** (none)

**Explanation****Explanation/Reference:****QUESTION 9**

A customer wants to implement a management and monitoring tool for an HPE B-series SAN switch environment. You plan to recommend the HPE SAN Network Advisor.

Which information about the customer's environment will help you to decide which edition to recommend?

- A. FCIP support
- B. Amount of used fabrics
- C. FCoE support
- D. Fabric OS version

**Correct Answer:** D

**Section:** (none)

**Explanation****Explanation/Reference:****QUESTION 10**

A customer has a SAN infrastructure with an HPE C-Class blade enclosure, and a mix of ProLiant G7, Gen8 and Gen9 servers. They require a new storage platform.

How can you confirm the new storage array will be supported in the existing environment?

- A. Design an array with an older version of the firmware to ensure compatibility.
- B. Document existing server and SAN information, and consult SPOCK to ensure firmware compatibility.
- C. Design an array with the latest firmware, and recommend that the customer engage HPE PointNext to upgrade the existing hardware.
- D. Check recommended firmware levels in the HP SAN Design Reference Guide to ensure firmware compatibility.

**Correct Answer:** B

**Section:** (none)

**Explanation****Explanation/Reference:**

**QUESTION 11** You need to add SSD drives to a production HPE 3PAR StoreServ array configured with Adaptive Flash Cache (AFC).

What do you need to consider?

- A. Online expansion is not supported if the AFC is running in simulation mode.
- B. System performance might be affected during activation of the additional resources for AFC.
- C. The system will automatically re-balance to use the additional resources for AFC.
- D. The RAID configuration for the SSD drives might need adjustment if you want to use them for AFC.

**Correct Answer:** C

**Section:** (none)

**Explanation**

**Explanation/Reference:**

#### QUESTION 12

Which resource provides configurations for HPE tested and referenced configurations in a software-defined storage environment?

- A. HPE Storage Sizer
- B. One Config Advanced
- C. NinjaStars
- D. StoreVirtual VSA Ready Nodes

**Correct Answer:** B

**Section:** (none)

**Explanation**

**Explanation/Reference:**

#### QUESTION 13

A customer is concerned about media and transmission errors caused by any component in the I/O stack from the server host bus adapter (HBA) into the HPE 3PAR StoreServ ports.

Which feature will address the customer's concern?

- A. Persistent Checksum
- B. Persistent Cache
- C. Peer Persistence
- D. Persistent Ports

**Correct Answer:** A

**Section:** (none)

**Explanation**

**Explanation/Reference:**

**QUESTION 14** A customer has a large deployment of HPE Synergy compute modules, HPE 3PAR StoreServ storage, and HPE StoreOnce systems in a single data center. They are concerned about the risk of data loss due to site disaster.

What is the reason to propose HPE CloudBank?

- A. To easily move workloads to AWS or Azure in the event of site disaster.
- B. To improve RPO/RTO objectives by automating snapshot-based integrating between 3PAR and StoreOnce.
- C. To regularly send backups to the cloud for the purposes of DR protection.
- D. To leverage 3PAR snapshots and utilize StoreOnce recovery capabilities to minimize data loss and downtime.

**Correct Answer:** A

**Section:** (none)

**Explanation**

**Explanation/Reference:**

**QUESTION 15**

Where does HPE 3PAR StoreServ Data-at-Rest Encryption occur?

- A. ASIC
- B. physical disk
- C. processor
- D. host

**Correct Answer: B**

**Section: (none)**

**Explanation**

**Explanation/Reference:**

**QUESTION 16**

A customer needs to implement a new SAN fabric for their growing environment. The new SAN should provide a high performance and port-efficient network with many-to-many connectivity. Because of changing requirements and the possible acquisition of another company in the near future, the customer cannot predict the I/O traffic pattern within the SAN. The customer is also concerned about availability.

Which type of SAN topology should you recommend?

- A. cascaded fabric
- B. meshed fabric
- C. core-edge fabric
- D. single-switch fabric

**Correct Answer: B**

**Section: (none)**

**Explanation**



**Explanation/Reference:**

**QUESTION 17**

A customer asks for a 50 TB disk-based backup solution with deduplication. They also need additional storage for test/dev purposes.

Which single HPE storage platform can you present to the customer that will meet both of their needs?

- A. HPE Nimble SF series
- B. HPE StoreEasy Gateway
- C. HPE StoreOnce
- D. HPE Nimble CS series

**Correct Answer: C**

**Section: (none)**

**Explanation**

**Explanation/Reference:**

**QUESTION 18**

A customer is concerned about the business risks of non-compliance for long-term data protection, retention, immutability, and encryption on petabytes of data consisting of millions of objects in a global namespace across multiple geographic locations.

Which products should you recommend to the customer to address their concern? (Choose two.)

- A. HPE StoreOnce Systems

- B. HPE Complete Veeam
- C. HPE Complete iTernity iCAS
- D. HPE Scality RING on HPE Apollo Servers
- E. HPE 3PAR StoreServ 9000

**Correct Answer:** C

**Section:** (none)

**Explanation**

**Explanation/Reference:**

**QUESTION 19** A customer is interested in integrating their HPE 3PAR StoreServ arrays into their OneView environment to support automated volume provisioning.

What must you install to enable the integration?

- A. HPE SAN Network Advisor Enterprise
- B. HPE SAN Network Advisor Professional
- C. 3PAR Host Explorer
- D. OneView Global Dashboard

**Correct Answer:** B

**Section:** (none)

**Explanation**

**Explanation/Reference:**

**QUESTION 20** A customer has an HPE 3PAR StoreServ 8200 with eight 3.84 TB SSD's configured with RAID5 7+1. They plan to add four more 3.84 TB SSD's.

What needs to be changed on the configuration once the new SSD's are installed?

- A. Reconfigure the cpg setsize as RAID6 6+2 and wait for tunesys to complete.
- B. Change the availability level from cage to magazine.
- C. Adjust the cpg growth value to match amount of SSD's.
- D. Change the cpg setsize to RAID5 5+1 and run tunesys.

**Correct Answer:** D

**Section:** (none)

**Explanation**

**Explanation/Reference:**

**QUESTION 21** You are presenting the HPE StoreEver portfolio to a media agency.

What advantage is offered when using LTFS?

- A. file management capabilities will be provided with tape cartridges
- B. WORM functionality for file, block and object storage access on tape
- C. file encryption with public and private key management
- D. file and block data management within an HPE HSM solution

**Correct Answer:** A

**Section:** (none)

**Explanation****Explanation/Reference:****QUESTION 22**

A customer needs a backup solution for their virtualized environment. The backup solution must be agentless, hypervisor independent, and integrated with HPE storage solutions. The solution must support Nimble snapshot and replication management.

Which product meets the customer requirements?

- A. Veeam Backup and Replication
- B. CommVault Simpana IntelliSnap
- C. HPE StoreOnce Recovery Manager Central
- D. Micro Focus Data Protector

**Correct Answer:** A

**Section:** (none)

**Explanation****Explanation/Reference:****QUESTION 23**

A customer has mission-critical applications that intermittently experience heavy disk I/O. The storage speed has the most impact on the application's performance. The customer does not want to dedicate SSD disks to these applications because additional performance is only needed periodically, and moving the volumes between tiers takes too long.

Which HPE StoreVirtual VSA feature can address this customer's challenge?

- A. Storage virtualization
- B. Space Reclamation
- C. Thin Provisioning
- D. Adaptive Optimization



**Correct Answer:** D

**Section:** (none)

**Explanation****Explanation/Reference:****QUESTION 24**

A customer wants to expand his cascaded B-series based SAN but is concerned about latencies within the SAN backend. You recommend changing the topology to a full mesh.

Which switch feature will ensure that the latencies in the backend are at the lowest possible level?

- A. LACP
- B. NPIV
- C. FSPF
- D. VSF

**Correct Answer:** C

**Section:** (none)

**Explanation****Explanation/Reference:**



**QUESTION 25**

Which statement is correct when discussing the RAID layout of an HPE Nimble CS3000 storage system?

- A. RAID 6 triple parity is set up -21 data drives are used for RAID stripes.
- B. RAID 6 triple parity is set up -18 data drives are used for RAID stripes.
- C. RAID 6 or RAID 1 can be set up -24 data drives are used for RAID stripes.
- D. RAID 6 or RAID 1 can be set up -18 data drives are used for RAID stripes.

**Correct Answer:** A

**Section:** (none)

**Explanation**

**Explanation/Reference:**

**QUESTION 26** Which value does a Nimble solution provide in addition to other HPE storage solutions?

- A. Flat support pricing for all hardware components
- B. Future-proofed for newer technologies
- C. All-inclusive software licensing over 5 years and additional capacity upgrades
- D. Upfront option for free controller upgrade after 3 years

**Correct Answer:** B

**Section:** (none)

**Explanation**

**Explanation/Reference:**

**QUESTION 27** You have just completed a performance analysis of an HPE 3PAR StoreServ 8400 disk array with different tiers at a customer's site. After reviewing the performance metrics, you determine that they should install a new tier of SSD drives. Which actions should you recommend they take to fully optimize the array? (Choose two.)

- A. Configure Adaptive Flash Cache.
- B. Configure scheduled tunesys tasks.
- C. Rebalance all flash drives between nodes 0 and 2.
- D. Configure Adaptive Optimization.
- E. Configure dedicated drives to enable Adaptive Flash Cache.

**Correct Answer:** BD

**Section:** (none)

**Explanation**

**Explanation/Reference:**

**QUESTION 28**

An HPE 3PAR StoreServ 9000 All-Flesh Array customer plans to deploy a secondary array 20 km away from their primary array to enable storage replication over a dark fibre. Their existing environment consists of one HPE Synergy Frame 12000, HPE SN6000B Fibre Channel Switches, HPE FlexFabric 5700 Switch Series, and HPE StoreOnce Systems.

Which HPE license is required to meet the customer's technical requirements?

- A. Intelligent Resilient Framework licenses
- B. HPE StoreOnce Replication
- C. Extended Fabric
- D. HPE 3PAR Remote Copy

**Correct Answer:** D

**Section: (none)**

**Explanation**

**Explanation/Reference:**

**QUESTION 29** What is the benefit of HPE Synergy? (Choose two.)

- A. It supports up to three HPE StoreVirtual VSA nodes for storage RAID.
- B. It can compose and reclaim DAS storage.
- C. It supports HPE BladeSystem c-class FlexFabric interconnect modules.
- D. It can use HPE 3PAR File Persona for object storage.
- E. It can prevent block storage services from HPE 3PAR as part of the resource pool.

**Correct Answer: BE**

**Section: (none)**

**Explanation**

**Explanation/Reference:**

**QUESTION 30** During a technology workshop, the customer asks about differences between converged and Fibre Channel switches.

What would be a benefit of using FlexFabric switches in a fibre channel storage environment?

- A. support for six Ethernet and two Fibre Channel, or six Ethernet and two iSCSI or eight Ethernet adapters per server
- B. zones can be configured for QoS with high, medium, and low priorities within a fabric on a zone by zone basis
- C. in-flight compression and encryption provides efficient link utilization and security
- D. support for combining multiple physical switches into one virtual switch with a single IP address

**Correct Answer: D**

**Section: (none)**

**Explanation**

**Explanation/Reference:**

**QUESTION 31** A customer currently has a CS1000H and wants to upgrade to a CS3000.

What must be considered before upgrading?

- A. This upgrade is disruptive and needs planned downtime.
- B. A capacity upgrade to a fully populated array has to be performed first.
- C. Timeless storage support is not offered for SC1000H entry-level systems.
- D. A controller upgrade to a CS1000F has to be performed first.

**Correct Answer: B**

**Section: (none)**

**Explanation**

**Explanation/Reference:**

**QUESTION 32**

An HPE 3PAR StoreServ customer with FC, SSD and NL, drives is facing extreme latency during peak business hours with an OLTP application. They have enabled tiering using all drive types.

What could be used to resolve the issue?

- A. Dynamic Optimization using tier 2
- B. Adaptive Optimization using tier 1
- C. Dynamic Optimization between tier 0 and tier 1
- D. Dynamic Optimization using tier 1

**Correct Answer:** B

**Section:** (none)

**Explanation**

**Explanation/Reference:**

**QUESTION 33** How does the HPE StoreVirtual VSA storage platform scale performance and capacity?

- A. eliminates the need for storage controllers
- B. enables access through multiple protocols
- C. aggregates all resources into a single storage pool
- D. recreates storage pools on multiple devices

**Correct Answer:** D

**Section:** (none)

**Explanation**

**Explanation/Reference:**

**QUESTION 34**

A customer is evaluating an HPE 3PAR StoreServ system in a proof-of-concept project. The customer wants to receive emails about important storage system events and alerts.

What feature do you need to configure?

- A. HPE OneView integration
- B. Secure Service Agent
- C. Real-time Alert Processing
- D. Local Notification Service

**Correct Answer:** D

**Section:** (none)

**Explanation**

**Explanation/Reference:**

**QUESTION 35** Which statement describes HPE StoreVirtual Network RAID functionality?

- A. Redundancy is managed on a per-volume basis.
- B. With Network RAID 10+2 data is striped and mirrored across two or more storage systems.
- C. Network RAID 10 requires an even number of storage nodes.
- D. Volumes remain available if an odd number of nodes are available.

**Correct Answer:** D

**Section:** (none)

**Explanation**

**Explanation/Reference:**

**QUESTION 36** Users are complaining about poor performance with their Data Warehouse application.

What is an effective solution to increase their performance at minimal cost?

- A. HPE 3PAR Adaptive Flash Cache B. HPE 3PAR Priority Optimization
- C. HPE 3PAR Dynamic Optimization D. HPE 3PAR Adaptive Optimization

**Correct Answer: B**

**Section: (none)**

**Explanation**

**Explanation/Reference:**

**QUESTION 37** A customer is planning to connect a new HPE 3PAR StoreServ system to its existing Synergy based composable infrastructure via direct-attach.

Which tool would be used to manage the storage?

- A. HPE SAN Network Advisor
- B. HPE Synergy Image Streamer
- C. HPE Synergy Composer
- D. HPE InfoSight for 3PAR

**Correct Answer: C**

**Section: (none)**

**Explanation**

**Explanation/Reference:**

**QUESTION 38** A customer needs to store a large amount of unstructured data that must be queried quickly.

Which type of storage meets the customer's needs?

- A. object
- B. hash
- C. file
- D. flash

**Correct Answer: A**

**Section: (none)**

**Explanation**

**Explanation/Reference:**

**QUESTION 39** What can move data directly from a snapshot to backup storage independent of backup server software?

- A. SSMC



- B. CLI
- C. Express Protect
- D. Virtual Lock

**Correct Answer:** C

**Section:** (none)

**Explanation**

**Explanation/Reference:**

**QUESTION 40**

A customer asks for an integrated solution for their remote office with All-Flesh storage and ease of management. Application-aware replication to their main office is an important requirement.

Which HPE solution component should you discuss with the customer first?

- A. HPE SimpliVity 380
- B. HPE MSA 2052 Storage
- C. HPE Nimble CS1000 system
- D. HPE 3PAR StoreServ 8200

**Correct Answer:** A

**Section:** (none)

**Explanation**

**Explanation/Reference:**

**QUESTION 41** Which HPE storage solution offer a two-tier backup solution for hybrid cloud with optimal recovery time?

(Choose two.)

- A. Simplivity 380
- B. Nimble SF series
- C. 3PAR 8000 series
- D. StoreOnce with Catalyst
- E. Nimble CS series

**Correct Answer:** AD

**Section:** (none)

**Explanation**

**Explanation/Reference:**

**QUESTION 42**

Which feature enables a non-disruptive environment where host-based multi-pathing software is not affected in the event of a firmware upgrade?

- A. HPE 3PAR Access Guard
- B. HPE 3PAR Persistent Ports
- C. HPE 3PAR Persistent Cache
- D. HPE 3PAR MPIO

**Correct Answer:** B

**Section:** (none)

**Explanation**

**Explanation/Reference:**

**QUESTION 43** You are advising a customer on a new backup strategy to deploy HPE StoreOnce.

What should you recommend to ensure the best storage utilization and performance?

- A. consolidate activity windows for housekeeping tasks
- B. size solution for a single backup device
- C. combine management and backup Ethernet traffic
- D. use separate backup targets for different data types

**Correct Answer:** A

**Section:** (none)

**Explanation**

**Explanation/Reference:**

**QUESTION 44**

What performance benefit is provided by using the HPE StoreVirtual DSM for Microsoft MPIO instead of the standard MPIO?

- A. The HPE DSM increases availability and reduces latency and throughput.
- B. The storage system, which holds a copy of the requested data, services the read I/Os.
- C. The iSCSI connections are blocked to non-critical nodes in the cluster by default.
- D. The storage system, which receives a copy of the data, does not service the write I/O.

**Correct Answer:** B

**Section:** (none)

**Explanation**

**Explanation/Reference:**



**QUESTION 45** You are designing a solution that will have a new HPE Synergy frame and an HPE 3PAR StoreServ 8200 storage array with only the built-in ports. This new environment must keep the infrastructure within the data center to a minimum.

Which interconnect module will achieve this goal?

- A. Synergy 25-50Gb F8 Switch Module
- B. 6125G/XG Ethernet Blade Switch
- C. Synergy 20Gb interconnect Link Module
- D. Virtual Connect SE 40Gb F8 Module

**Correct Answer:** D

**Section:** (none)

**Explanation**

**Explanation/Reference:**

**QUESTION 46** What owns the physical drives in an HPE 3PAR StoreServ Express Layout?

- A. a logical disk
- B. a chunklet
- C. a single node
- D. a node pair

**Correct Answer:** D

Section: (none)

Explanation

Explanation/Reference:

**QUESTION 47** What is used to migrate data between nodes in an HPE StoreVirtual VSA environment?

- A. Network RAID
- B. Peer Motion
- C. SmartClone
- D. Remote Copy

**Correct Answer:** B

Section: (none)

Explanation

Explanation/Reference:

**QUESTION 48**

DRAG DROP

Match the data access type in a SAN fabric to the correct description.

Select and Place:

Data Access Type	Description
Centralized	<input type="text"/>
Distributed	<input type="text"/>
Local	<input type="text"/>

**Correct Answer:**

Data Access Type	Description
<input type="text"/>	Local Data access between a local server and a storage system connected to the same switch
<input type="text"/>	Centralized Data access between multiple, dispersed servers and one storage system
<input type="text"/>	Distributed Data access between multiple, dispersed servers and multiple storage systems

Section: (none)

Explanation

**Explanation/Reference:**

**QUESTION 49** You are planning a single-site Nimble solution with iSCSI connectivity. Two 10GbE SFP+ dual port NICS are included in the configuration. You designed an intelligent Resilient Framework (IRF) stack with HPE FlexFabric 5900CP switches.

Which statements is correct when discussing the IRF limits for this configuration?

- A. When connecting an iSCSI storage to an IRF stack, a minimum of four 10GbE ports must be used per switch.
- B. A maximum of two switches can be used in an IRF stack when connecting storage.
- C. In an IRF stack with storage connectivity, the 40GbE ports cannot be used.
- D. The used IRF ports for iSCSI traffic have to be configured as 10GbE converged ports.

**Correct Answer:** A

**Section:** (none)

**Explanation**

**Explanation/Reference:**

**QUESTION 50**

Which storage sizing tool, designed for HPE 3PAR StoreServ, can be used to determine whether customers qualify for the Get Thin Guarantee Program?

- A. NinjaProtected
- B. NinjaStars
- C. NinjaCrawler
- D. StoreVista

**Correct Answer:** B

**Section:** (none)

**Explanation**



**Explanation/Reference:**

**QUESTION 51**

A customer needs to add another HPE 3PAR StoreServ system and plans to use the federated storage approach.

Which advantages can the customer expect? (Choose two.)

- A. load balancing
- B. reduced power, cooling, and environmental impacts
- C. allows multiple management tools
- D. easier migration
- E. federated deduplication

**Correct Answer:** CD

**Section:** (none)

**Explanation**

**Explanation/Reference:**

**QUESTION 52**

A customer with several HPE 3PAR StoreServ arrays has reported latencies with newly updated applications. You have proposed changes to the AO configuration and need to provide high-resolution reports on how the change has affected the latencies.

What should you propose on delivering the service time and I/O workload information daily for you and the customer?



- A. Use IMC to schedule performance data gathering and email delivery.
- B. Schedule SSMC System Reporter to send the defined email reports.
- C. Enable the Service Processor to gather Performance data and schedule data transfer.
- D. Login to InfoSight and analyze Advanced Performance history.

**Correct Answer:** D

**Section:** (none)

**Explanation**

**Explanation/Reference:**

**QUESTION 53** What advantage does the Unified API that is part of HPE's composable strategy provide?

- A. infrastructure lifecycle managed with standard programming code
- B. single portal for managing servers, networking, and storage
- C. write-back capability and instant cable warmth
- D. dedicated object storage platform

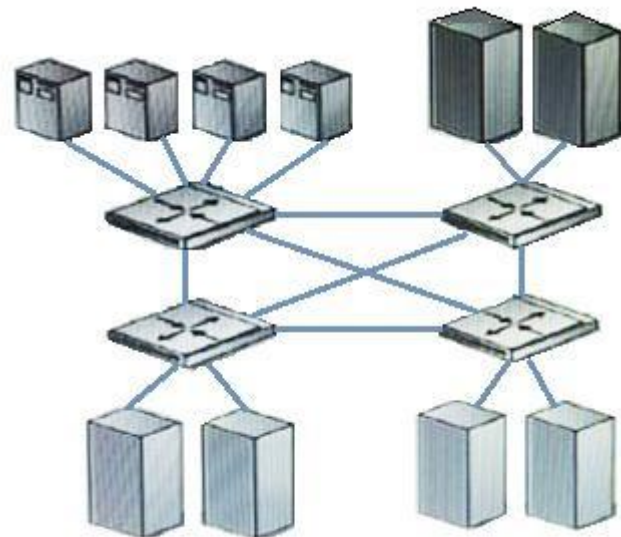
**Correct Answer:** B

**Section:** (none)

**Explanation**

**Explanation/Reference:**

**QUESTION 54**



Which fabric design is shown?

- A. meshed
- B. single fabric
- C. cascaded
- D. core-edge

**Correct Answer:** A

**Section:** (none)

**Explanation**

**Explanation/Reference:**

**QUESTION 55**

You are planning an upgrade to a customer's existing HPE 3PAR StoreServ 8200 to include 4-port 16Gb FC adapters. The servers are zoned to see the storage via four paths. The customer is concerned about storage availability during the upgrade.

Which statement is correct about performing this upgrade?

- A. When NPIV is enabled, the 3PAR Port persistence will show all four paths to the servers.
- B. The MPIO service will do a failover, and the servers will continue to have access via two paths.
- C. Windows servers require host explorer is installed to ensure MPIO is unaffected.
- D. As long as MEM driver is installed on VMware vSphere, no path failures are seen.

**Correct Answer:** A

**Section:** (none)

**Explanation**

**Explanation/Reference:**

**QUESTION 56**

A customer has a SAN based on HPE B-series switches with Gen6 fibre channel technology. Their workload is continually growing and they are experiencing performance issues. They need a solution to enable real-time monitoring and to speed up troubleshooting in his SAN backend.

Which unique feature of the HPE B-series Gen6 switches should you recommend? (Choose two.)

- A. Fabric Watch
- B. MAPS
- C. Advanced Trunking
- D. Fabric Vision
- E. Extended Fabrics



**Correct Answer:** AD

**Section:** (none)

**Explanation**

**Explanation/Reference:**

**QUESTION 57** Which 3PAR StoreServ feature allows a host to continue I/O interrupted during a firmware upgrade?

- A. Peer Persistence
- B. Persistent Memory
- C. Persistent Ports
- D. Persistent Cache

**Correct Answer:** C

**Section:** (none)

**Explanation**

**Explanation/Reference:**

**QUESTION 58**

Refer to the exhibit:

●	Port ID	Label	System	Port Type	Port State	▶
■	0:1:1	-	3PAR	Host	Ready	
■	0:1:2	-	3PAR	Free	Loss Sync	
■	0:2:1	-	3PAR	Host	Ready	
■	0:2:2	-	3PAR	Host	Offline	
■	0:0:1	DP-1	3PAR	Disk	Ready	
■	0:0:2	DP-2	3PAR	Disk	Ready	
■	0:3:1	RCIP0	3PAR	RC	Offline	

✔ 0:1:1 | Overview ▾ | 🔍 |

General

Port ID

0:1:1

System

3PAR

Label

-

Protocol

FC

Rate

8 Gbps

Adapter type

EMULEX LPe12002

CNA port

No

WWN

Port type

Host

Mode

Target

Mode change

Allowed

Connected devices

3 hosts

Which type of data format do you expect in the red rectangle?

- A. 172.16.31.11/24
- B. 94:b4:0f:cd:34:8a
- C. iqn.2015-02.com.hpe:oneview-vcgeDav000
- D. 20110002AC00736E235.524

Correct Answer: D  
Section: (none)  
Explanation

Explanation/Reference:

**QUESTION 59** Which storage sizing tool, designed specifically for the HPE 3PAR StoreServ environment, shows the expected deduplication ratio based on actual data analysis of the customer's current environment?

- A. NinjaCrawler
- B. StoreVistaC. NinjaThin
- D. NinjaStars

Correct Answer: B  
Section: (none)  
Explanation

Explanation/Reference: