

HPE0-J50.VCEplus.premium.exam.68q

Number: HPE0-J50
Passing Score: 800
Time Limit: 120 min
File Version: 1.0



Website: <https://vceplus.com>

VCE to PDF Converter: <https://vceplus.com/vce-to-pdf/>

Facebook: <https://www.facebook.com/VCE.For.All.VN/>

Twitter : https://twitter.com/VCE_Plus

HPE0-J50

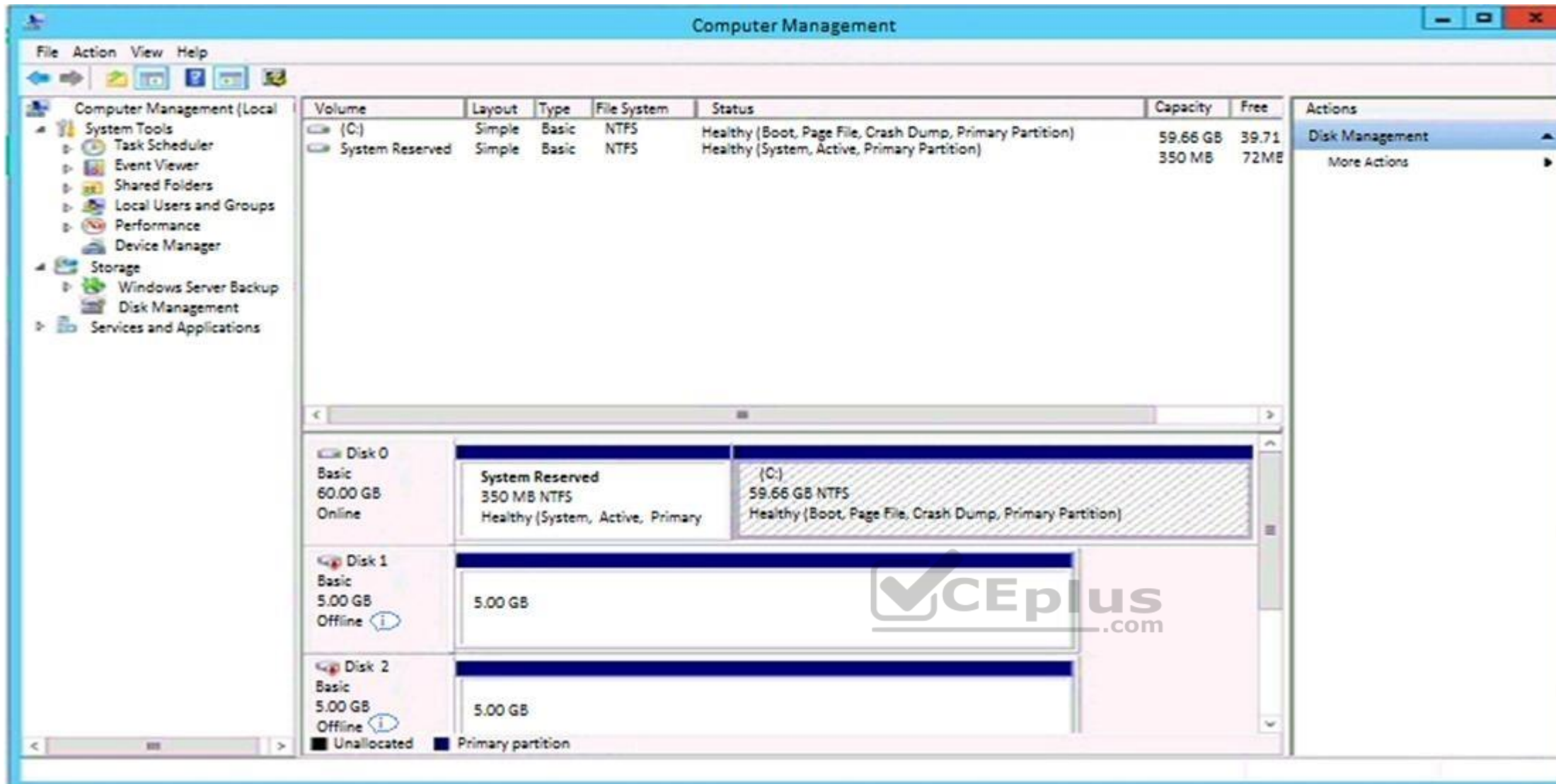
Integrating Protected HPE Storage Solutions



Exam A

QUESTION 1

Refer to the exhibit.



The administrator has presented an HPE 3PAR StoreServer virtual volume to a server. A single virtual volume is seen as two different offline disks on a Windows 2012 R2 server.

What must be done to correct the issue?

- A. Install HPE 3PAR DSM MPIO and reboot the server.
- B. Install the latest HBA driver and reboot the server.
- C. Install the MPIO feature and reboot the server.
- D. Install 3PAR host explorer and start service.

Correct Answer: A

Section: (none)

Explanation

Explanation/Reference:

Reference: <https://assets.ext.hpe.com/is/content/hpedam/documents/4aa5-5000-5999/4aa5-5894/4aa5-5894enw.pdf> (21)

QUESTION 2

A customer with an HPE 3PAR 8200 unit has concerns about tracking missing updates and where to find the information on when upgrades were done in the past. With previous storage systems the customer ran out of storage before knowing that they needed to order more storage.

What can the integrator do to help the customer with these concerns?

- A. Use the 3PAR Service Processor for Inspire event notification.
- B. Enable StoreFront Remote integration.
- C. Schedule SSMC Overview reports for the customer.
- D. Link the 3PAR Service Agreement ID to customer's HPE passport account for storage reporting.

Correct Answer: C

Section: (none)

Explanation

Explanation/Reference:

QUESTION 3

HOTSPOT

When using the CLI for performance monitoring on an HPE 3PAR array, for which component in the datapath would the “**stavlun**” command give an output? (Click on the correct option.) **Hot**

Area:

Correct Answer:

Section: (none)

Explanation

Explanation/Reference:

QUESTION 4

A customer has HPE Data Protector and a StoreOnce VSA at a remote site that must replicate to the corporate data center StoreOnce backup device.

What considerations must be taken into account to allow for Catalyst replication?

- A. Data Protector Catalyst replication will rehydrate the data on the StoreOnce VSA then write to the data center StoreOnce.
- B. Data Protector will write 2 backups: one to the StoreOnce VSA, the other to StoreOnce at the data center.
- C. Data Protector Catalyst replication requires gateways to both sites to use Object copy.
- D. Data Protector Catalyst replication is configured through the replication license on the StoreOnce VSA.

Correct Answer: C

Section: (none)

Explanation

Explanation/Reference:

QUESTION 5

HOTSPOT

Click on an available port that can be used to connect an HPE 3PAR StoreServ 8000 to drive enclosures. (Click on the correct port.) **Hot**

Area:



Correct Answer:



Section: (none)

Explanation

Explanation/Reference:

Reference:

https://hpe.kx.com.tw/file/repository/a00004511enw_omq99_7yi1ipz.pdf



QUESTION 6 A storage integrator is validating an HPE 3PAR StoreServ implementation. The integrator created a volume in the HPE 3PAR StoreServ Management Console (SSMC) and needs to verify read/write access from a Linux operating system. Which steps are part of the verification process? (Choose two.)

- A. Select Hosts under the Servers menu section, and click Create server.
- B. Select the volume in the Virtual Volumes section, and click Map Volume in the Actions menu.
- C. Select the host in the Servers section, and click Add permission in the Actions menu.
- D. Select the volume in the Virtual Volumes section, and click Export in the Actions menu.
- E. Select Hosts in the Block Persona menu section, and click Create host.

Correct Answer: AB

Section: (none)

Explanation

Explanation/Reference:

QUESTION 7

Refer to the exhibit.

<MB>													
		-Volumes-		-Usage-		-Upr-		-Snp-		-Adm-			
Id	Name	Warn%	UU	IPUU	Upr	Snp	Total	Used	Total	Used	Total	Used	
0	G7_FC_R1	-	0	0	0	0	0	0	0	0	0	0	0
1	G7_SSD_R1	-	0	0	0	0	0	0	0	0	0	0	0
2	G7_FC_R5	-	0	0	0	0	0	0	0	0	0	0	0
3	G9_FC_R5	-	0	0	0	0	0	0	0	0	0	0	0
4	G1_RAID5_FC	-	1	1	1	1	512	512	32512	512	8192	128	
8	G2_Basic_lab_Virtual_Cop_NL	-	0	0	0	0	0	0	0	0	0	0	0
6 total					1	1	512	512	32512	512	8192	128	
BB2 cli% _													

A storage integrator is examining the configuration of an HPE 3PAR storage system using CLI. Which command can be used to display a list of common provisioning groups starting with substring R5 in the system?

- A. showcpg R5*
- B. cpg show | grep ^R5
- C. cpg | grep R5*
- D. cmore showcpg -l R5*

Correct Answer: A

Section: (none)

Explanation

Explanation/Reference:

Reference: <https://support.hpe.com/hpsc/doc/public/display?docId=c04204279>

QUESTION 8

A system engineer installed HPE Insight Remote Support for an HPE MSA 2042 storage system at a customer's site. The engineer wants to integrate the system in HPE Insight Online to monitor it remotely.

Which information does the engineer need from the customer to do the integration, using the Insight Remote Support GUI with HPE Insight Online? (Choose two.)

- A. HPE Passport ID
- B. Product number of MSA 2042
- C. Service Agreement ID (SAID)
- D. HPE Passport password
- E. Serial number of MSA 2042

Correct Answer: BE

Section: (none)

Explanation

Explanation/Reference:

Reference: http://h20628.www2.hp.com/km-ext/kmcsdirect/emr_na-c04608183-8.pdf

QUESTION 9

A storage integrator installed an HPE 3PAR StoreServ system.

For which default accounts will the storage integrator need to hand over changed passwords to the customer?

- A. 3parcust, 3paradm
- B. cpmaint, spmaint
- C. root, 3paradm
- D. root, console

Correct Answer: A

Section: (none)

Explanation

Explanation/Reference:

Reference: https://support.hpe.com/hpsc/doc/public/display?docId=emr_na-a00006417en_us

QUESTION 10

Your customer has a requirement to provide identification information to the PDU such as server name, UUID number, and IP address from their ProLiant-based storage products.

Which PDU do you recommend to meet this requirement?

- A. HPE G2 Metered PDUs
- B. HPE Intelligent PDU
- C. HPE G2 Metered and Switched PDU. HPE Standard Series G2 Basic PDU

Correct Answer: B

Section: (none)

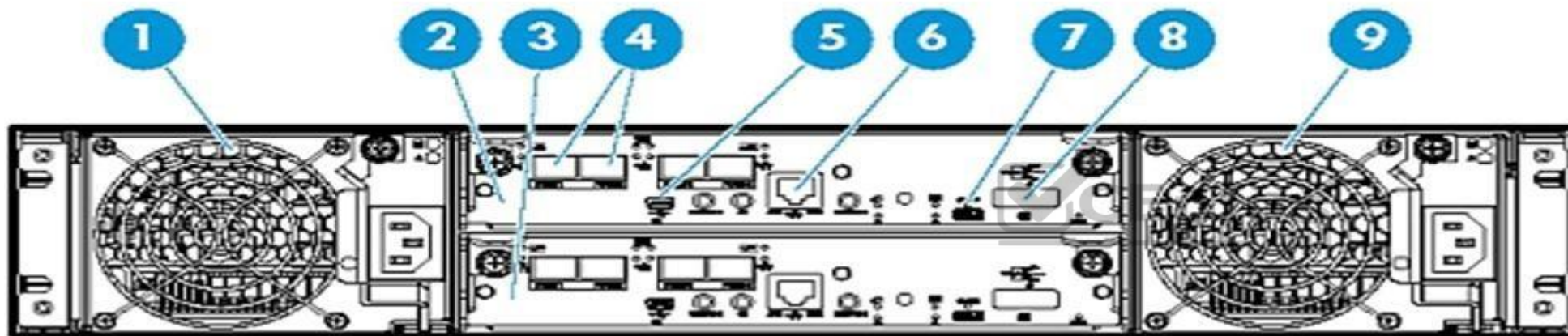
Explanation

Explanation/Reference:

Reference: http://www.hp.com/hpinfo/newsroom/press_kits/2010/techforum2010/pdf/TF_IPD_DataSheet.pdf

QUESTION 11

Refer to the exhibit.



Which port can be used to connect the HPE MSA 2040 controller to hosts?

- A. 4
- B. 5
- C. 6
- D. 8

Correct Answer: A

Section: (none)

Explanation

Explanation/Reference:

Reference: <https://support.hpe.com/hpsc/doc/public/display?docId=c03792322> (10)

QUESTION 12

A storage integrator wants to change the tiering affinity of an existing volume on an HPE MSA 1040/2040 with GL220 and higher.

How can this goal be achieved?

- A. Change volume tier preference of the volume.
- B. Migrate volume using new tiering settings.
- C. Perform a clone operation with a new automatic tiering rule.

D. Delete the volume, and create a new volume with the correct automatic tiering rule.

Correct Answer: A

Section: (none)

Explanation

Explanation/Reference:

Reference: <https://h20195.www2.hpe.com/v2/GetPDF.aspx/4AA4-6892ENW.pdf> (24)

QUESTION 13 A storage integrator is planning an HPE StoreVirtual VSA installation.

Which network-related information may be needed for the implementation?

- A. DHCP reservation for virtual IP address of the StoreVirtual cluster
- B. jumbo frames need to be enabled for iSCSI traffic
- C. flow-control needs to be disabled when using 10Gb NICs
- D. virtual IP address for the StoreVirtual cluster

Correct Answer: D

Section: (none)

Explanation

Explanation/Reference:

Reference: <https://support.hpe.com/hpsc/doc/public/display?docId=c05049837> (4)

QUESTION 14 What must be configured before a storage integrator can start creating volumes from the available space on an HPE MSA 1040/2040?

- A. disk group
- B. snapshot space
- C. date and time on MSA storage
- D. global spare disk



Correct Answer: C

Section: (none)

Explanation

Explanation/Reference:

QUESTION 15

HOTSPOT

You are installing an additional HPE 3PAR StoreServ SFF disk enclosure in an HPE 3PAR 8200 StoreServ array. The newly-installed enclosure appears as cage1.

You are able to verify from the 3PAR CLI that both cage0 and cage1 appear. However, you notice an error in the system health:

```
Component -----Summary Description----- Qty
Cabling      Cages with improperly balanced daisy-chain cabling 1
-----
1 total                                           1
```

Click on the controller enclosure port you would look at to start troubleshooting this issue.

Hot Area:



Correct Answer:



Section: (none)

Explanation

Explanation/Reference:

Reference: <https://support.hpe.com/hpsc/doc/public/display?docId=c04830947>



QUESTION 16

A storage integrator has connected a new Windows Server 2012 host to a customer's fabric where five HPE 3PAR StoreServ arrays are already installed. The integrator plans to create a script to send the information about the new host to all HPE 3PAR arrays in an automated way.

Which Host Explorer command should be used?

- A. tpdhostget status
- B. hostagent set
- C. tpdhostagent push
- D. hostagent list

Correct Answer: C

Section: (none)

Explanation

Explanation/Reference:

Reference: <https://h20195.www2.hpe.com/v2/GetPDF.aspx/4AA4-4524ENW.pdf> (12)

QUESTION 17

A customer finds that the performance of their application is not optimal. The customer's application stores data on an HPE 3PAR StoreServ Array to a volume within an FC tier.

How should the storage integrator move the application data to a volume within an SSD tier?

- A. Backup the data, delete the FC volume, create a new SSD volume, and restore the data to it.
- B. Use the Dynamic Optimization feature in the HPE 3PAR StoreServ Management Console.
- C. Use the System Reporter feature in the HPE 3PAR StoreServ Management Console.

D. Create an SSD volume, use the server OS to copy the data to the new volume, and delete the FC volume.

Correct Answer: D

Section: (none)

Explanation

Explanation/Reference:

QUESTION 18

A customer currently utilizing HPE 3PAR StoreServ 7200 is experiencing performance bottlenecks within their SAN storage.

Which cost-effective upsell or cross-sell HPE storage solution will offer significantly more performance and higher capacity to meet their needs and fit within their current infrastructure?

- A. HPE 3PAR StoreServ File Controller v3 System
- B. HPE 3PAR StoreServ 8440
- C. 8-node HPE 3PAR StoreServ 20000 Storage
- D. HPE StoreVirtual 3200 Storage

Correct Answer: C

Section: (none)

Explanation

Explanation/Reference:

QUESTION 19

An integrator is validating a design for an HPE 3PAR StoreServ solution. The assessment document shows that there is structured cabling between the rack the array will be installed in and the racks with the SAN switches. The fiber segments between the racks are documented as being 50 micron OM2 and are terminated with SC connectors.

What needs to be considered when validating this design?

- A. 3PAR arrays must be directly connected to SAN switches.
- B. The SC connectors must be replaced by LC connectors.
- C. OM2 Fiber cables are not supported for 8 Gbps.
- D. Fiber segments cannot mix OM2 and OM4 cables.

Correct Answer: B

Section: (none)

Explanation

Explanation/Reference:

QUESTION 20

A storage integrator has installed HPE OneView for vCenter to integrate HPE MSA 1040 management from a vSphere Web Client.

Which typical configuration task is required after the installation of HPE OneView for vCenter?

- A. license HPE OneView for VMware Storage Component
- B. register HPE OneView for vCenter to Storage Management Utility
- C. add HPE MSA Storage System to vCenter server
- D. add vCenter server to HPE OneView for vCenter

Correct Answer: A

Section: (none)

Explanation

Explanation/Reference:

Reference: https://support.hpe.com/hpsc/doc/public/display?docId=a00037524en_us

QUESTION 21 As a best practice, what should the Integrator do after finishing a storage solution installation?

- A. Remove and insert each hot swappable component one-by-one.
- B. Verify the used space in a rack.
- C. Test storage solution functionality under the operational temperature range.
- D. Verify the event logs are accumulating data.

Correct Answer: C

Section: (none)

Explanation

Explanation/Reference:

QUESTION 22

Which management interface or tool primarily offers remote support capabilities for an HPE 3PAR StoreServ storage system?

- A. HPE 3PAR Service Processor
- B. HPE 3PAR Direct Connect
- C. HPE Insight Remote Support
- D. HPE Insight Online 3PAR

Correct Answer: C

Section: (none)

Explanation



Explanation/Reference:

Reference: https://www.hpe.com/emea_europe/en/services/get-connected.html

QUESTION 23

A storage integrator has connected a new Windows Server 2008 R2 host to an HPE 3PAR StoreServ array. After creating a new 3PAR Virtual Volume and exporting it to the new host, the Disk Management tool on the host is displaying two new drives.

Which additional software should the technician install to consolidate the displayed drive?

- A. Storage Spaces
- B. Enhanced Storage
- C. File and Storage Services
- D. Multipath I/O feature

Correct Answer: D

Section: (none)

Explanation

Explanation/Reference:

QUESTION 24 Which command can be used to display license information on an HPE StoreOnce system?

- A. license show
- B. info license
- C. license display
- D. show licenses

Correct Answer: A

Section: (none)

Explanation

Explanation/Reference:

Reference: <https://developer.hpe.com/blog/using-the-ssmccli-hpe-3par-ansible-module-with-virtual-domains>

QUESTION 25 A storage integrator is creating a domain in the 3PAR StoreServ Management

Console (SSMC).

Which settings of a 3PAR virtual domain have to be configured? (Choose two.)

- A. Name
- B. OpenLDAP server
- C. Active Directory Domain Controller
- D. Storage Controller
- E. Storage System

Correct Answer: AE

Section: (none)

Explanation

Explanation/Reference:

QUESTION 26

A customer has two HPE StoreVirtual VSA instances installed on VMware vSphere hosts, 3TB of data allocated for both with 4TB VSA license. The customer has purchased an HPE StoreVirtual VSA 2014 Software Upgrade 4TB to 10TB upgrade license. The data store size is increased from 3TB to 10.5TB for both VMware servers.

What is required to make the newly-added capacity available? (Choose two.)

- A. The VSA appliance needs to be restarted to rescan added storage and expand VSA RAID with the new capacity.
- B. The upgrade license requires that the VSA appliance is redeployed.
- C. The integrator must remove the current RAID configuration and create a new one after adding more storage to the VSA appliance.
- D. The VSA virtual appliance requires more memory and cpu resources.
- E. The VMware vmrk file needs to be extended from 3TB to 10TB for each VSA appliance. Then, VSA will detect the additional storage.

Correct Answer: BE

Section: (none)

Explanation

Explanation/Reference:

Reference: <https://h20195.www2.hpe.com/v2/GetPDF.aspx%2Fc04111621.pdf>

QUESTION 27

Refer to the exhibit.

A customer complains of poor performance on an HPE MSA 2040 storage array. The storage administrator thinks that the host ports could be limiting factor because only two ports are connected to the SAN fabric. To verify this the administrator wants to use the performance monitor of the MSA system, but has never used this monitor before. The administrator logs on to a HPE MSA 2040 in the lab to get familiar with performance monitoring.

Which value would indicate a host port performance issue?

- A. Read Response
- B. IOPS
- C. B/s
- D. Queue Depth

Correct Answer: A

Action

Components

Select components from the table and click Show Data Below:

Show Host Ports

ID	Port Type
hostport_A1	FC
hostport_A2	FC
hostport_A3	iSCSI
hostport_A4	iSCSI
hostport_B1	FC
hostport_B2	FC
hostport_B3	iSCSI
hostport_B4	iSCSI

Show Data

PERFORMANCE

Current Data

Current data samples show the most recent sample updates every 30 seconds

Sample time:

Total Duration of All Data Samples

Showing 1-0 of 0

	IOPS	B/s	L'O Response (ms)	Read Response (ms)	Write Response (ms)	Queue
--	------	-----	----------------------	-----------------------	------------------------	-------

No data available in the table



Section: (none)

Explanation

Explanation/Reference:

QUESTION 28

A storage integrator is installing the HPE StoreVirtual Centralized Management Console (CMC) to manage a StoreVirtual VSA cluster.

What is the proper procedure to install the console?

- A. Download the StoreVirtual CMC installer and start the installation from primary StoreVirtual VSA node.
- B. Download the CMC Appliance and deploy to a hypervisor not running StoreVirtual VSA nodes.
- C. Download the StoreVirtual CMC installer and run on the computer with a supported Linux operating system.
- D. Download the CMC Appliance and deploy to hypervisors running StoreVirtual VSA nodes.

Correct Answer: D

Section: (none)

Explanation

Explanation/Reference:

Reference: https://support.hpe.com/hpsc/doc/public/display?docId=a00016289en_us

QUESTION 29 When is write throttling of

HDDs invoked?

- A. to synchronize speed of writing to multiple solid-state drives combined with rotational drives
- B. to synchronize speed of writing to multiple solid-state drives
- C. when drive wearing rate will cause the drive to fail before the warrantied time
- D. when the power consumption of a drive exceeds the power cap

Correct Answer: C

Section: (none)

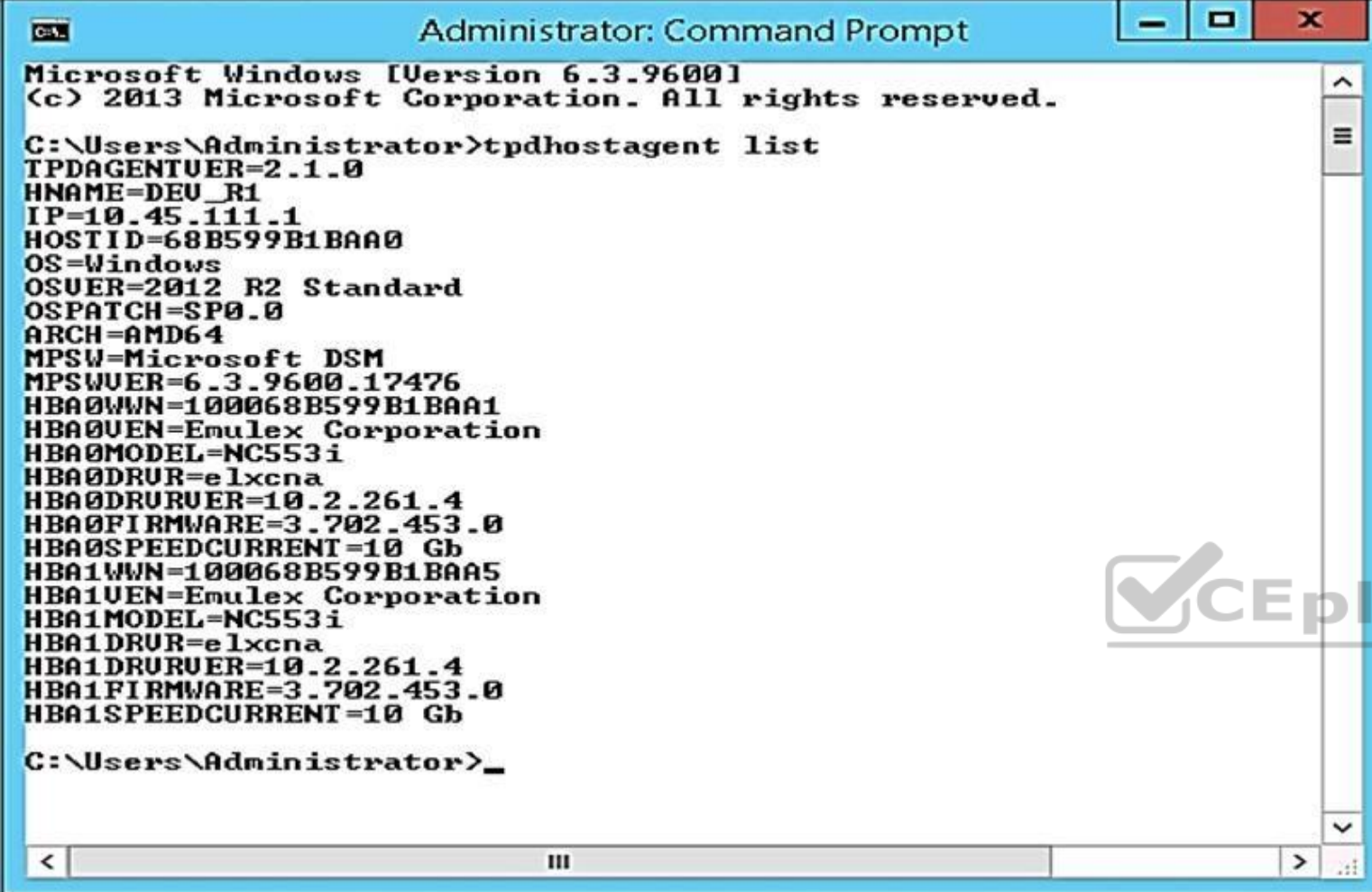
Explanation

Explanation/Reference:

Reference: <https://pdfs.semanticscholar.org/c078/528cdf6369cbb01881b8795d44bf799c7490.pdf>

QUESTION 30

Refer to the exhibit.



```

Administrator: Command Prompt
Microsoft Windows [Version 6.3.9600]
(c) 2013 Microsoft Corporation. All rights reserved.

C:\Users\Administrator>tpdhostagent list
TPDAGENTUER=2.1.0
HNAME=DEV_R1
IP=10.45.111.1
HOSTID=68B599B1BAA0
OS=Windows
OSUER=2012 R2 Standard
OSPATCH=SP0.0
ARCH=AMD64
MPSW=Microsoft DSM
MPSWUER=6.3.9600.17476
HBA0WWN=100068B599B1BAA1
HBA0VEN=Emulex Corporation
HBA0MODEL=NC553i
HBA0DRUR=elxcna
HBA0DRURUER=10.2.261.4
HBA0FIRMWARE=3.702.453.0
HBA0SPEEDCURRENT=10 Gb
HBA1WWN=100068B599B1BAA5
HBA1VEN=Emulex Corporation
HBA1MODEL=NC553i
HBA1DRUR=elxcna
HBA1DRURUER=10.2.261.4
HBA1FIRMWARE=3.702.453.0
HBA1SPEEDCURRENT=10 Gb

C:\Users\Administrator>
  
```

A storage integrator is planning to map an HPE StoreServ virtual volume to a server.

Which tool can be used to gather required information, such as WWNs of the server, for exporting the volume?

- A. HPE 3PAR PowerShell cmdlets
- B. HPE 3PAR Host Explorer
- C. HPE 3PAR CLI
- D. Multipath I/O parameters

Correct Answer: A

Section: (none)

Explanation

Explanation/Reference:

QUESTION 31

DRAG DROP

A storage integrator is validating an HPE 3PAR StoreServ implementation. The integrator needs to verify the read/write access to an exported volume from a Windows host. The volume is not visible in Windows Explorer. (Place the steps in the correct order to rectify the solution.)

Select and Place:

Correct Answer:

Section: (none)

Explanation

Explanation/Reference:

QUESTION 32

A customer wants to expand their SAN environment, which is based on B-series FC switches. They have a virtualized environment and two HPE 3PAR StoreServ arrays.

Which tools can be used by the Integrator to check the health of the SAN environment before starting the expansion and after finishing? (Choose two.)

- A. HPE SAN Network Advisor
- B. HPE Complete AntemetA 3PAR Vision
- C. Brocade SAN Health
- D. HPE Enterprise Fabric Management Suite
- E. HPE Central Management Console

Correct Answer: CE

Section: (none)

Explanation

Explanation/Reference:



QUESTION 33 The customer has purchased an HPE StoreOnce VSA and their backup software is HPE Data Protector.

What considerations should be taken for support of Data Protector and Catalyst stores?

- A. Catalyst only supports Data Protector 64 bit Media Agent.
- B. StoreOnce Catalyst only supports Data Protector 6.x and above.
- C. Only Data Protector Cell Manager supports writing to the Catalyst store.
- D. The Data Protector 64 bit Media Agent supports only VTL and NAS on the StoreOnce.

Correct Answer: C

Section: (none)

Explanation

Explanation/Reference:

QUESTION 34

HOTSPOT

Click on the area where a storage integrator can create a new Catalyst Store.

Hot Area:

HPE Recovery Manager Central Search

Backup Systems 2 All statuses

[+ Add Backup Systeem](#)

Name	AliasName	IP/Hostname	Type	SerialNumber
HP91FD8FDD6E	Source SO	storeoncesource.l ab.local	StoreOnce	91FD8FDD6E
HPBEF6E269EF	Target SO	storeoncetarget.l ab.local	StoreOnce	BEF6E269EF

HPBEF6E269EF Overview

Backup Devices

Type	StoreOnce
IP/Hostname	storeoncetarget.lab.local
Serial Number	BEF6E269EF
Fibre Channel ID	
Catalyst Client User	Admin

Catalyst License **Available**

Stores

Name	Version	Created	Number of Catalyst Items	Dedupe Ratio	Service Set Id
RMCCriticalCopy	2	2016-07-14 10:53:00	0	0.0	1
RMCCatalog	2	2016-07-14 10:53:00	0	0.0	1

Correct Answer:

HPE Recovery Manager Central Search

Backup Systems 2 All statuses

[+ Add Backup Systeem](#)

Name	AliasName	IP/Hostname	Type	SerialNumber
HP91FD8FDD6E	Source SO	storeoncesource.l ab.local	StoreOnce	91FD8FDD6E
HPBEF6E269EF	Target SO	storeoncetarget.l ab.local	StoreOnce	BEF6E269EF

HPBEF6E269EF Overview

Backup Devices

Type	StoreOnce
IP/Hostname	storeoncetarget.lab.local
Serial Number	BEF6E269EF
Fibre Channel ID	
Catalyst Client User	Admin

Catalyst License **Available**

Stores

Name	Version	Created	Number of Catalyst Items	Dedupe Ratio	Service Set Id
RMCCriticalCopy	2	2016-07-14 10:53:00	0	0.0	1
RMCCatalog	2	2016-07-14 10:53:00	0	0.0	1

Section: (none)

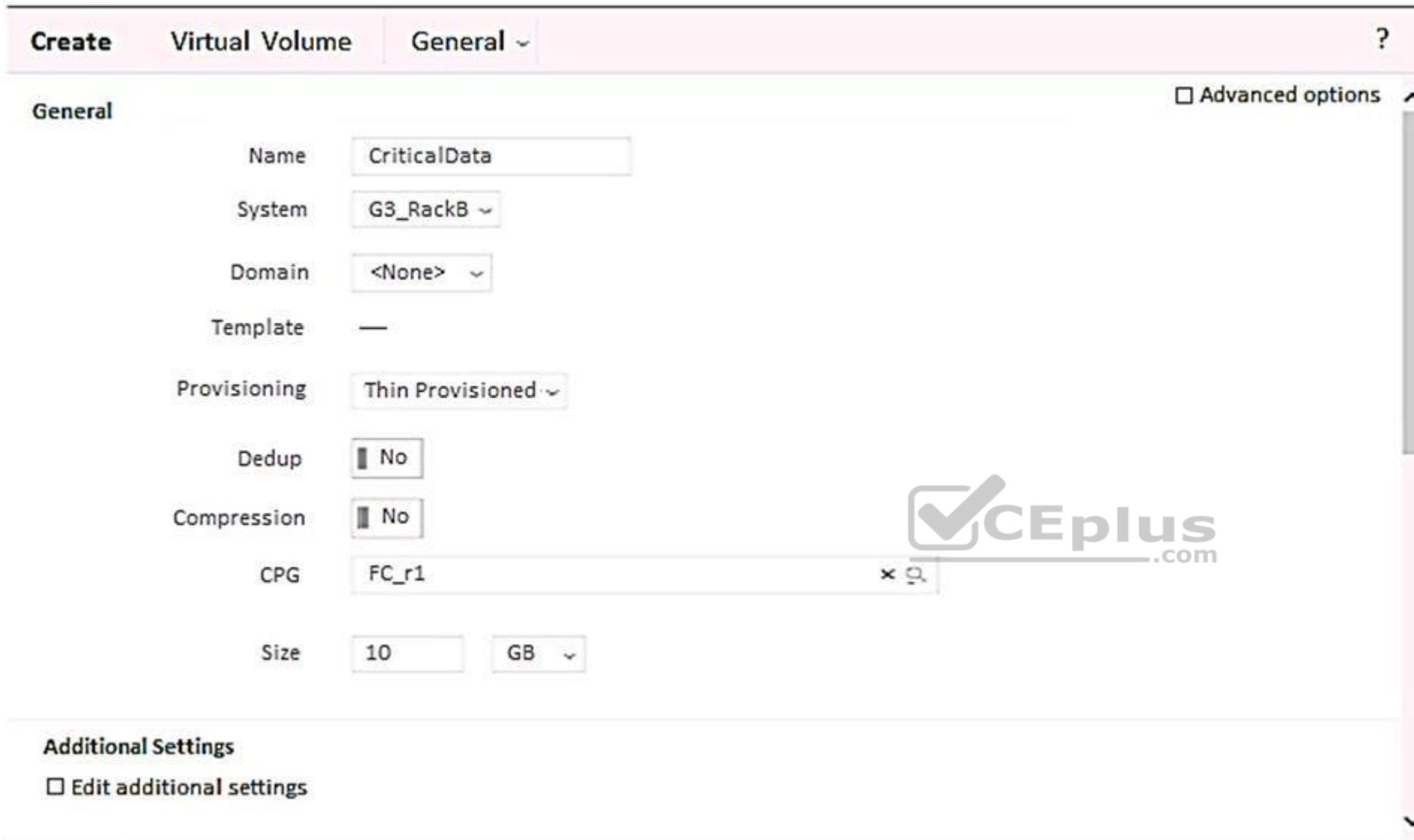
Explanation

Explanation/Reference:

Reference: https://support.hpe.com/hpsc/doc/public/display?docId=emr_na-a00042435en_us (49)

QUESTION 35

Refer to the exhibit.



The screenshot shows the 'Create Virtual Volume' wizard in the HPE 3PAR StoreServ management interface. The 'General' tab is active, displaying various configuration fields for a new virtual volume. The fields are as follows:

- Name:** CriticalData
- System:** G3_RackB
- Domain:** <None>
- Template:** —
- Provisioning:** Thin Provisioned
- Dedup:** No
- Compression:** No
- CPG:** FC_r1
- Size:** 10 GB

At the top right of the wizard, there is a checkbox for 'Advanced options'. At the bottom left, there is a checkbox for 'Edit additional settings'. A vertical scrollbar is visible on the right side of the form.

A storage integrator is creating a virtual volume on an HPE 3PAR StoreServ storage system and plans to create clones of the volume in the future. Which additional steps will be required for this? (Choose two.)

- A. Check Edit additional settings.
- B. Configure a new Virtual Domain.
- C. Check Enable clones.
- D. Check Advanced options.
- E. Configure Copy CPG.

Correct Answer: DE

Section: (none)

Explanation

Explanation/Reference:

QUESTION 36 A storage integrator is planning the implementation of a single HPE StoreOnce 3100.

How many power cords are required to be connected to PDU from this storage system, when power supply kit was ordered?

- A. 0
- B. 2 C. 4
- D. 6

Correct Answer: B

Section: (none)

Explanation

Explanation/Reference:

Reference: <https://h20195.www2.hpe.com/v2/GetPDF.aspx/c04328820.pdf>

QUESTION 37 A customer wants to back up their VMware data stores using consistent snapshots for rapid online recovery.

Which RMC components are required when installing the solution?

- A. HPE 3PAR StoreServ Array, RMC, RMC-V plugin
- B. RMC-V plugin installed on the HPE 3PAR StoreServ Array
- C. RMC virtual host, two HPE 3PAR StoreServ Arrays
- D. RMC-V plugin installed on all ESX protected hosts

Correct Answer: B

Section: (none)

Explanation

Explanation/Reference:

Reference: http://h20628.www2.hp.com/km-ext/kmcsdirect/emr_na-c04940241-4.pdf

QUESTION 38 A storage integrator is planning an HPE MSA Storage installation.

What needs to be taken into consideration when implementing a SAS connected model?

- A. SAS expander or a SAS switch is supported only with non-redundant paths.
- B. SAS expander or a SAS switch is required if eight or more servers are connected.
- C. Up to four servers with redundant paths can be connected.
- D. Up to four servers with non-redundant paths can be connected.

Correct Answer: C

Section: (none)

Explanation

Explanation/Reference:

Reference: https://support.hpe.com/hpsc/doc/public/display?docId=emr_na-a00028199en_us&docLocale=en_US#N10010

QUESTION 39 In which areas in SSMC can a 3PAR virtual domain membership be selected? (Choose two.)

- A. iSCSI port
- B. Host



- C. Fibre Channel port
- D. StoreServ report
- E. Common Provisioning Group

Correct Answer: BD

Section: (none)

Explanation

Explanation/Reference:

QUESTION 40

A storage administrator has deployed a Windows 2012 R2 server which needs to have a virtual volume exported from an HPE StoreServ 8200. After zoning the host to storage and installing the HPE 3PAR Host Explorer on the server, the administrator is not seeing the server name in SSMC host list when creating a host object.

What are two valid options to correct the issue? (Choose two.)

- A. Enable host explorer discovery from the HPE 3PAR CLI.
- B. Execute tpdhostagent push.
- C. Restart the Host Explorer service.
- D. Reinstall the Host Explorer service.
- E. Restart the SSMC service.

Correct Answer: AB

Section: (none)

Explanation

Explanation/Reference:



QUESTION 41 An HPE MSA 2042 supports three different types of drives.

What is the best practice when enabling storage tiering?

- A. Configure affinity per virtual volume and schedule optimization times.
- B. Create three storage pools; assign performance and standard tiers to controller A and assign archive tier to controller B.
- C. Configure affinity per storage pool, and set up virtual volume for tiering enabled.
- D. Create three storage pools, assign them to same controller, and define affinity at a Virtual Volume level.

Correct Answer: A

Section: (none)

Explanation

Explanation/Reference:

QUESTION 42

HOTSPOT

Click the menu option a storage integrator will use to install a new StoreOnce VSA solution.

Hot Area:

Correct Answer:

Section: (none)

Explanation

Explanation/Reference:

Reference: https://h20628.www2.hp.com/km-ext/kmcsdirect/emr_na-a00058155en_us-1.pdf

QUESTION 43

A customer has an HPE 3PAR StoreServ 8000 system with three tiers of SSDs, SAS HDDs, and NL SAS. They are using Adaptive Flash Cache (AFC) and Adaptive Optimization (AO) across all three tiers. They want to implement a new virtual desktop infrastructure and want to use deduplication on the array for this workload. The integrator is in the process of implementing additional SSD drives to prepare the array for the new workload.

What must the integrator do to implement this solution?

- A. Disable AO to enable deduplication.
- B. Disable AFC to enable deduplication.
- C. Configure a new CPG for the SSD tier.
- D. Create a new Virtual Domain.

Correct Answer: C

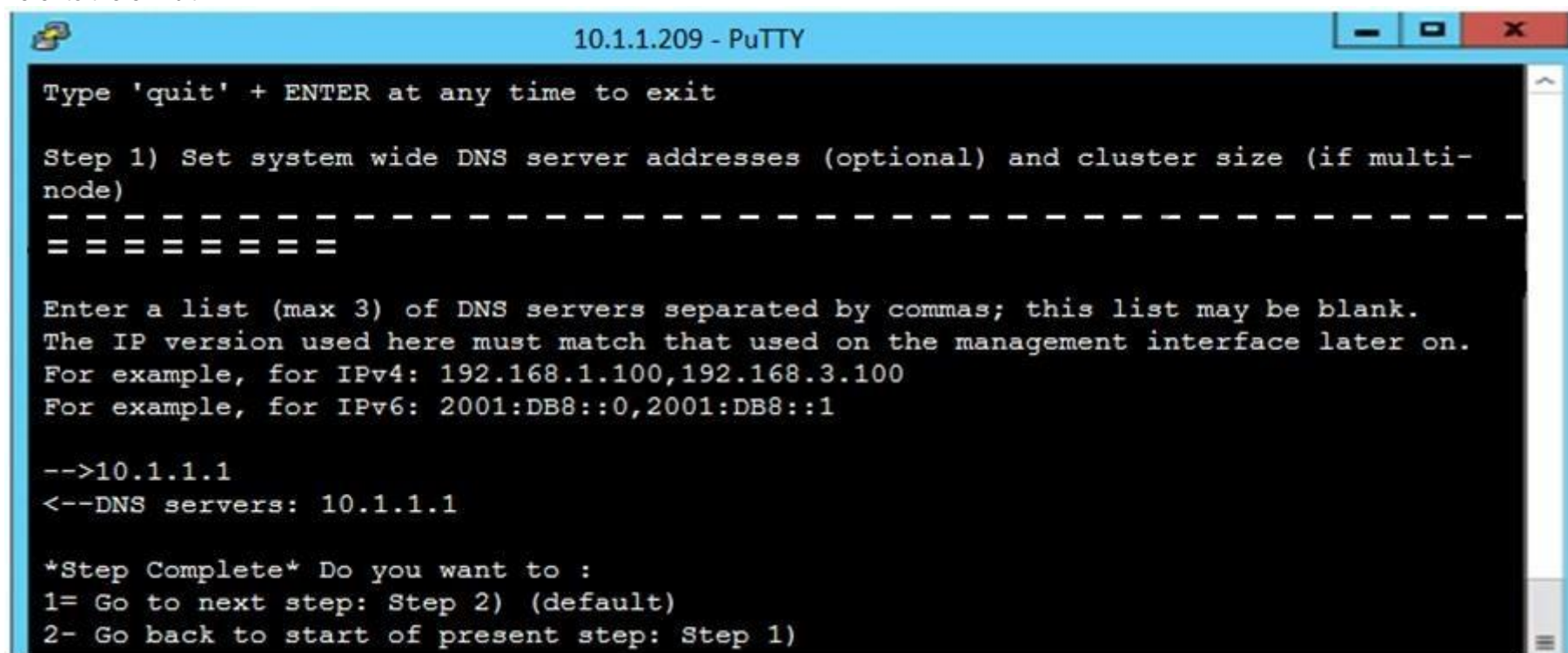
Section: (none)

Explanation

Explanation/Reference:

QUESTION 44

Refer to the exhibit.



```

Type 'quit' + ENTER at any time to exit

Step 1) Set system wide DNS server addresses (optional) and cluster size (if multi-
node)
-----
=====

Enter a list (max 3) of DNS servers separated by commas; this list may be blank.
The IP version used here must match that used on the management interface later on.
For example, for IPv4: 192.168.1.100,192.168.3.100
For example, for IPv6: 2001:DB8::0,2001:DB8::1

-->10.1.1.1
<--DNS servers: 10.1.1.1

*Step Complete* Do you want to :
1= Go to next step: Step 2) (default)
2- Go back to start of present step: Step 1)

```

Which command can be used in the CLI console to set the static IP address and DNS server for an HPE StoreOnce device?

- A. net set wizard
- B. create network
- C. setup network
- D. run setup

Correct Answer: A

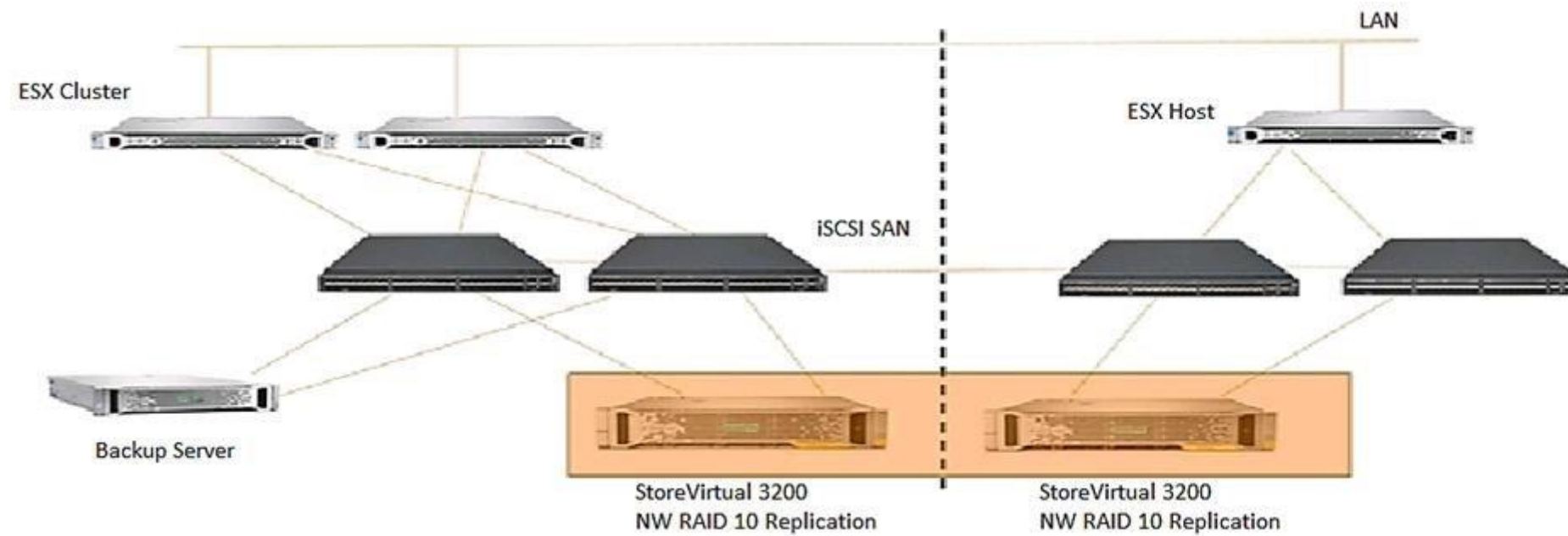
Section: (none)

Explanation

Explanation/Reference:

Reference: <https://support.hpe.com/hpsc/doc/public/display?docId=c04000350> (97)

QUESTION 45



An HPE StoreVirtual 3200 system consists of 19x 1.2 TB Drives in a RAID5 with a capacity level of 75%. The network is built with four HPE FlexFabric 5900 switches. The customer complained about performance challenges with the given configuration, and the administrator identified the drive configuration as a bottleneck. A performance analysis shows latencies above 60ms. Installation of the systems was done by best practices.

Which actions should be performed to solve these issues? (Choose two.)

- A. Advise additional tiering licenses.
- B. Change RAID set to RAID 1 on both systems.
- C. Offer SSD drives for tiering purposes and a performance boost.
- D. Verify that a minimum of 4 RAID sets are built for optimal performance.
- E. Set the bonding policy to ALB on both systems.



Correct Answer: CD

Section: (none)

Explanation

Explanation/Reference:

QUESTION 46

A storage integrator is handing over an installed HPE 3PAR storage system to a customer. The customer wants the original license key of the system for setlicense command that is used to prevent the system from prompting for confirmation of new license key.

Which of the following command shows original license key?

- A. showlicense -raw
- B. displaylicense
- C. licshow
- D. licenseshow

Correct Answer: A

Section: (none)

Explanation

Explanation/Reference:

Reference: <https://support.hpe.com/hpsc/doc/public/display?docId=c04204279>

QUESTION 47

An HPE StoreVirtual 3200 solution specifies 802.3ad (LACP) bonding is required for the network interfaces.

What must be considered when implementing this solution?

- A. Only one of the chosen network interfaces will actively pass traffic.
- B. The network interfaces chosen may operate at the different speeds.
- C. Additional switch configuration will be necessary.
- D. The network interfaces chosen must be cabled to different switches.

Correct Answer: C

Section: (none)

Explanation

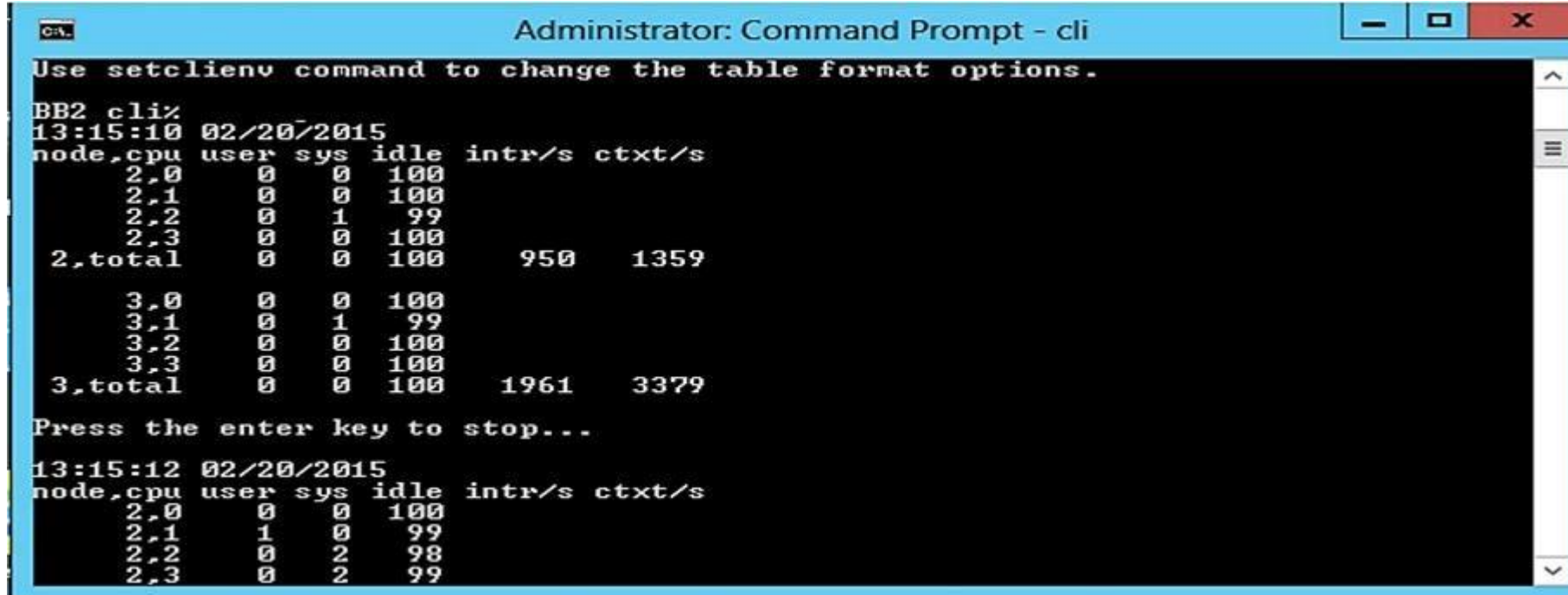
Explanation/Reference:

Explanation:

HPE StoreVirtual 3200 provides three options for the teaming/bonding of the network ports on each storage controller—Active-Passive, Link Aggregation Dynamic Mode (LACP), or Adaptive Load Balancing (ALB) bonding. The simplest solution, the Active-Passive bonding, utilizes only one of the available network ports per controller. The most complex solution, the LACP (802.3ad) bonding, delivers bandwidth aggregation and redundancy across both controller network ports but requires additional switch configurations such as IRF trunking. The preferred and recommended bonding mode is ALB, where the network ports may be connected to different switches, therefore, support switch failover.

QUESTION 48

Refer to the exhibit.



```

Administrator: Command Prompt - cli
Use setclienv command to change the table format options.
BB2 cli%
13:15:10 02/20/2015
node,cpu user sys idle intr/s ctxt/s
2,0 0 0 100
2,1 0 0 100
2,2 0 1 99
2,3 0 0 100
2,total 0 0 100 950 1359
3,0 0 0 100
3,1 0 1 99
3,2 0 0 100
3,3 0 0 100
3,total 0 0 100 1961 3379
Press the enter key to stop...
13:15:12 02/20/2015
node,cpu user sys idle intr/s ctxt/s
2,0 0 0 100
2,1 1 0 99
2,2 0 2 98
2,3 0 2 99
  
```

A customer wants to implement compression on an HPE 3PAR system and is concerned about potential bottlenecks on the CPU.

Which CLI command can be used to display the CPU utilization and create a performance baseline?

- A. perfcpu
- B. cpustat
- C. showcpu
- D. statcpu

Correct Answer: D

Section: (none)

Explanation

Explanation/Reference:

Reference: <https://support.hpe.com/hpsc/doc/public/display?docId=c04204279>

QUESTION 49

Action									
<input type="text"/> Clear Filters Show 10 Showing 1-1 of 1 (1 selected)									
Name	Health	Total size	Class	Avail	Volumes	Disk Groups			
A	OK	2978.2GB	Virtual	2918.1GB	4	3			

Related Disk Groups									
<input type="text"/> Clear Filters Show 10 Showing 1-3 of 3									
Name	Health	Pool	RAID	Class	Disk Type	Size	Free	Current Job	Status
Standard	OK	A	RAID6	Virtual	SAS (Standard)	584.4GB	505.3GB		FTCL
Archive	OK	A	RAID0	Virtual	SAS MDL (Archive)	1096.2GB	1065.2GB		FTCL
Performance	OK	A	RAID1	Virtual	sSAS (Performance)	297.5GB	286.5GB		FTCL

A system administrator is investigating an issue on an HPE MSA connected to a server with a Windows 2008 R2 operating system. The customer is complaining that after deleting temporary files on the volume the available space does not increase.

What is the possible cause of this problem?

- A. The Compact feature is not supported in this operating system.
- B. Volume needs to be converted to linear type.
- C. T10 UNMAP is not supported in this operating system.
- D. Housekeeping processes on the MSA are disabled.



Correct Answer: C

Section: (none)

Explanation

Explanation/Reference:

QUESTION 50

Refer to the exhibit.

Configure File Persona

Storage System

?

Storage System

☐ Advanced options

Storage System STM-3PAR-Array

Node Pairs

Name	State	1st IP Address	2nd IP Address	
0-1	Configured	172.20.6.193	172.20.6.194	
2-3	Configured	172.20.6.195	172.20.6.196	

Network Settings

Netmask

Gateway

172.20.7.254

DNS Settings

Configure

Cancel

An Integrator is configuring File Persona on a HPE 3PAR StoreServ 8440.

What is a valid Netmask for the configuration shown?

- A. 172.27.97.61
- B. 172.20.0.0
- C. 255.255.255.0
- D. 255.255.252.0

Correct Answer: C

Section: (none)

Explanation

Explanation/Reference:

QUESTION 51 A customer has the following components installed and running:

- HPE 3PAR StoreServ 8400 with two nodes
- three SFF drive shelves
- FC-based host connections
- a mixture of SSDs and SAS HDDs

The task is to expand the solution with two nodes and another three SFF drive shelves, as well as SSDs and SAS HDDs.

What must be checked at the customer site before beginning the installation?

- A. if there is space for the additional three SFF drive shelves adjacent to the existing drive shelves
- B. if there is space for the second node pair adjacent to the first node pair
- C. if there is the required number of High Density Active Optical Cables to connect the two node pairs
- D. if the license for enabling the second node pair is installed before starting the expansion

Correct Answer: A

Section: (none)

Explanation

Explanation/Reference:

QUESTION 52

A storage integrator is installing an HPE MSA 2042 into a remote location as a part of warehouse automation solution. The site has no IT staff and warehouse employees will not be granted access to the location where the MSA will be installed. The customer is concerned about the inability to control individual AC power outlets connected to the MSA.

Which HPE power delivery equipment can be added to the solution to address these requirements? (Choose two.)

- A. HPE G2 Metered and Switched PDU
- B. HPE Standard Series G2 Basic PDU
- C. HPE iPDU
- D. HPE G2 Metered PDU

Correct Answer: CD

Section: (none)

Explanation

Explanation/Reference:

QUESTION 53

Refer to the exhibit.



```

This command takes several minutes to complete execution.
storage discovery successfully completed

# hardware add storage

This command takes several hours to complete execution.
storage addition successfully started

# system show status

Status
-----
Adding 1,099.51GB...

Service Sets Status Notes
-----
#
  
```

A storage integrator is deploying an HPE StoreOnce VSA.

Which command can be used to find available storage capacity before it can be added in the StoreOnce console?

- A. hardware setup storage
- B. hardware run setup
- C. hardware discover storage
- D. hardware discover disks

Correct Answer: C

Section: (none)

Explanation

Explanation/Reference:

Reference: https://h20628.www2.hp.com/km-ext/kmcsdirect/emr_na-c03822685-16.pdf

QUESTION 54

What factors does a storage integrator need to consider before implementing an Ethernet-based SAN?

- A. Data Center Bridging requires supported switches and NICs.
- B. Remote Direct Memory Access (RDMA) support is mandatory for all components.
- C. Data Center Bridging requires optical fiber cables.
- D. Remote Direct Memory Access (RDMA) requires optical fiber cables.

Correct Answer: A

Section: (none)

Explanation

Explanation/Reference:

QUESTION 55

The system administrator created a volume on an HPE MSA 2042 storage solution. The storage administrator is complaining that the Storage Management Utility (SMU) displays allocated space, but there is no data on the disk yet and the volume is empty.

How can the storage integrator fix the issue?

- A. Modify the volume and enable thin provisioning.
- B. Create a virtual disk group and new virtual volume.
- C. Modify the volume and convert it to virtual.
- D. Create a linear disk group and new linear volume.

Correct Answer: B

Section: (none)

Explanation

Explanation/Reference:

QUESTION 56

A storage integrator is handing over an installed HPE StoreOnce solution to the customer and demonstrates the default usernames and passwords for the StoreOnce GUI. The storage administrator is interested in creating another local administrator account.

How can the storage administrator create an administrator account?

- A. Use the native user management feature in the operating system.
- B. Use the Add User link in the User Management screen in the StoreOnce GUI.
- C. Create the new account in Integrated Lights-Out (iLO) and synchronize the account to StoreOnce.
- D. Use the LDAP Integration screen in the StoreOnce GUI.

Correct Answer: C

Section: (none)

Explanation

Explanation/Reference:

QUESTION 57

A customer has 10 different branch offices. Each branch has one MSA 1040 and a StoreOnce 3100. The customer has concerns regarding the actual and predictive failures on sites which don't have any IT staff.

Which HPE tool should the integrator implement to provide visibility and alerts for the end customer and HPE?

- A. HPE STATS
- B. HPE OneView
- C. HPE Insight Support Online
- D. HPE Insight Remote Support

Correct Answer: D

Section: (none)

Explanation

Explanation/Reference:

QUESTION 58 What does DDPD (drive writes per day) for an SSD indicate?

- A. the maximum number of 4K host writes to the entire drive capacity of the SSD per day over a three-year period
- B. the maximum number of erase operations to the entire drive capacity of the SSD per day over a three-year period
- C. the maximum number of 4K host writes to the entire drive capacity of the SSD per day over a five-year period
- D. the maximum number of drive rewrite cycles (erase and write) for the SSD over a five-year period

Correct Answer: C

Section: (none)

Explanation

Explanation/Reference:

Reference: <https://h20195.www2.hpe.com/v2/GetPDF.aspx/4AA4-7186ENW.pdf> (2)

QUESTION 59

The storage integrator is about to add new HPE 3PAR StoreServ 8200 to a customer's existing SAN infrastructure.

What must be taken into account when developing a technical action plan?

- A. customer change control procedures
- B. action plan audience
- C. environmental requirements
- D. level of support

Correct Answer: C

Section: (none)

Explanation

Explanation/Reference:

QUESTION 60

A storage integrator is implementing an HPE 3PAR StoreServ system and connecting several storage volumes to a customer's VMware farm. During the implementation, the customer reveals that their legacy backup solution for protecting virtual machines does not provide a satisfactory RTO (recovery time objective). A recent implementation of new StoreOnce appliances did not fully solve the problem.

Which HPE solution could the integrator demonstrate to address the customers RTO concerns?

- A. HPE 3PAR StoreServ Management Console B. HPE Complete iTernity iCAS
- C. HPE 3PAR Integrated Management Console D. HPE Recovery Manager Central for VMware

Correct Answer: D

Section: (none)

Explanation

Explanation/Reference:

Reference: <https://assets.ext.hpe.com/is/content/hpedam/documents/4aa5-5000-5999/4aa5-5864/4aa5-5864enw.pdf>

QUESTION 61 A customer has requested the storage integrator to assist in installation of a HPE 3PAR StoreServ 8200.

As a best practice, what should be taken into consideration when deploying 3PAR Virtual Service Processor?

- A. Microsoft Hyper-V version of Virtual Service processor needs to be deployed to a CSV volume.
- B. Installation of the Virtual Service processor is optional with a single two node HPE 3PAR StoreServ.
- C. The Virtual Service processor should be deployed on other volume than a volume from the managed HPE 3PAR StoreServ.
- D. Virtual Service processor for VMware vSphere should be installed using VMware Fault Tolerance.

Correct Answer: A

Section: (none)

Explanation

Explanation/Reference:

QUESTION 62

HOTSPOT



A storage integrator is validating a StoreServ implementation. The integrator needs to verify read/write access to an exported volume from a Windows Server. The volume did not show up in Windows Explorer.

Click the menu option the storage integrator needs to use to make the volume available in a Windows server.

Hot Area:

Correct Answer:

Section: (none)

Explanation

Explanation/Reference:

QUESTION 63

After installing the HPE StoreOnce VSA into the VM environment, where can the version number of the software be checked?

- A. in the install log file
- B. on the console login screen
- C. in the install messages
- D. on the VMware vCenter

Correct Answer: A

Section: (none)

Explanation

Explanation/Reference:

QUESTION 64

A storage integrator is handing over an installed HPE StoreOnce solution to the customer and demonstrates that the system is properly configured.

Which CLI command can be used to run an appliance self-test?

- A. run confidencereport
- B. run confidencereport all
- C. system confidencechecker runtest all
- D. confidencecheck

Correct Answer: C

Section: (none)

Explanation

Explanation/Reference:

Reference: <https://support.hpe.com/hpsc/doc/public/display?docId=c04000350> (129)

QUESTION 65

Your customer needs to extend their storage SAN environment without the additional workload of manually creating zones for every new host or storage device.

What will allow the customer to move from creating zones manually to having zones created automatically?

- A. Brocade scripting of the zone setup
- B. HPE 3PAR Smart SAN feature
- C. break up of SAN switches to zone individually
- D. HPE SAN Advisor

Correct Answer: C

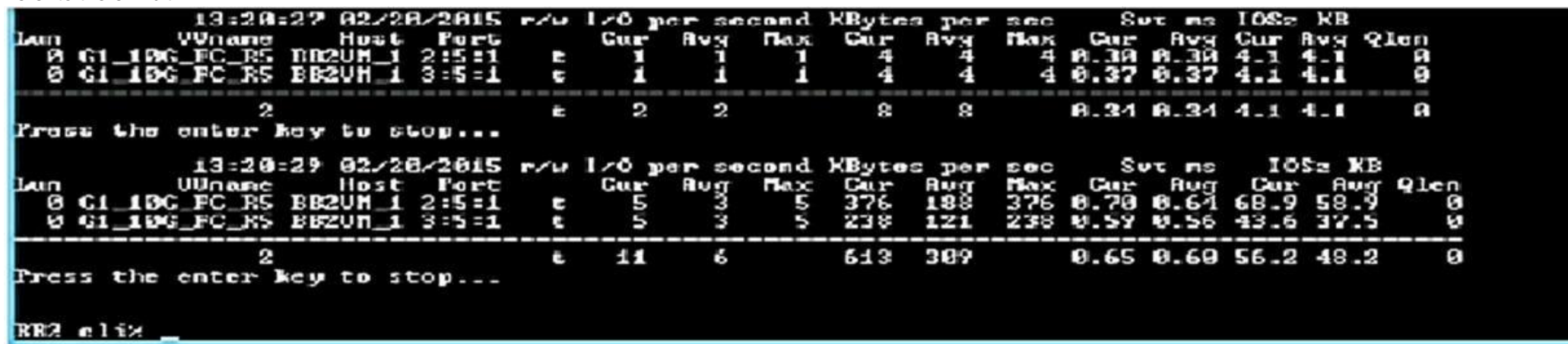
Section: (none)

Explanation

Explanation/Reference:

QUESTION 66

Refer to the exhibit.



```

13:20:27 02/20/2015 r/w I/O per second KBytes per sec Svc ms IOPS KB
Lun  VName Host Port Cur Avg Max Cur Avg Max Cur Avg Cur Avg Qlen
0 G1_10G_FC_R5 BB2UH_1 2:5:1 e 1 1 1 4 4 4 0.30 0.30 4.1 4.1 0
0 G1_10G_FC_R5 BB2UH_1 3:5:1 e 1 1 1 4 4 4 0.37 0.37 4.1 4.1 0
-----
2 e 2 2 8 8 0.24 0.24 4.1 4.1 0
Press the enter key to stop...

13:20:29 02/20/2015 r/w I/O per second KBytes per sec Svc ms IOPS KB
Lun  VName Host Port Cur Avg Max Cur Avg Max Cur Avg Cur Avg Qlen
0 G1_10G_FC_R5 BB2UH_1 2:5:1 e 5 3 5 376 188 376 0.70 0.64 68.9 58.9 0
0 G1_10G_FC_R5 BB2UH_1 3:5:1 e 5 3 5 238 121 238 0.59 0.56 43.6 37.5 0
-----
2 e 11 6 613 309 0.65 0.60 56.2 48.2 0
Press the enter key to stop...

RR2 elix _

```

A customer is complaining about slow performance for their HPE 3PAR StoreServ system.

Which CLI command can be used by the storage administrator to display the queue length of a VLUN attached to the server during the troubleshooting process?

- A. perfvlns
- B. statvirtvolmapping
- C. show mappingsvirtvol
- D. srstatvln

Correct Answer: D

Section: (none)

Explanation

Explanation/Reference:

Reference: <https://support.hpe.com/hpsc/doc/public/display?docId=c04204279> (689)

QUESTION 67

HOTSPOT

A storage integrator is verifying snapshots on an HPE MSA Storage system.

Click the menu option a storage integrator should use to check the contents of a snapshot from an operating system.

Hot Area:

Action
Create Virtual Volumes
Create Linear Volumes
Create Snapshot
Modify Volume
Copy Volume
Rollback Volume
Create Replication Set
Initiate Replication
Map Volumes
View Map Details
Add to Volume Group
Remove from Volume Group
Delete Volumes
Rename Volume Group
Remove Volume Group
Reset Snapshot
Manage Schedules

VOLUMES

Clear Filters
Show 10
Showing 1-7 of 7 (1 selected)

< >

Group	Name	Pool	Type	Size	Allocated
-	Linear_v0001	Linear	standard	74.9GB	74.9GB
-	Thin	A	base	99.9GB	100.6MB
-	Thin_s0001	A	snapshot	99.9GB	100.6MB
-	Vol0001	A	base	2999.9GB	104.8MB
-	vol1_standard	A	base	9.9GB	9.9GB
-	vol2_performance	A	base	19.9GB	19.9GB
-	vol3_archive	A	base	29.9GB	29.9GB

Snapshots
Maps
Replication Sets
Schedules

Clear Filters
Show 10
Showing 1-0 of 0

< >

Group.Host.Nickname
Volume
Access
LUN
Ports

No data for selected volumes.

Correct Answer:

Action
Create Virtual Volumes
Create Linear Volumes
Create Snapshot
Modify Volume
Copy Volume
Rollback Volume
Create Replication Set
Initiate Replication
Map Volumes
View Map Details
Add to Volume Group
Remove from Volume Group
Delete Volumes
Rename Volume Group
Remove Volume Group
Reset Snapshot
Manage Schedules

VOLUMES

Clear Filters
Show 10
Showing 1-7 of 7 (1 selected)

< >

Group	Name	Pool	Type	Size	Allocated
-	Linear_v0001	Linear	standard	74.9GB	74.9GB
-	Thin	A	base	99.9GB	100.6MB
-	Thin_s0001	A	snapshot	99.9GB	100.6MB
-	Vol0001	A	base	2999.9GB	104.8MB
-	vol1_standard	A	base	9.9GB	9.9GB
-	vol2_performance	A	base	19.9GB	19.9GB
-	vol3_archive	A	base	29.9GB	29.9GB

Snapshots
Maps
Replication Sets
Schedules

Clear Filters
Show 10
Showing 1-0 of 0

< >

Group.Host.Nickname
Volume
Access
LUN
Ports

No data for selected volumes.

Section: (none)

Explanation

Explanation/Reference:

QUESTION 68

When installing an HPE StoreOnce multimode system, which licenses must be available on all couplets to do Catalyst stores and to be allowed to do Catalyst replication?

- A. Catalyst required for the first couplet
- B. Catalyst and Replication licenses on the first couplet
- C. Catalyst licenses on all couplets
- D. Replication license on all couplets

Correct Answer: D

Section: (none)

Explanation

Explanation/Reference:

