

AZ-103.100q

Number: AZ-103
Passing Score: 800
Time Limit: 120 min

AZ-103



Website: <https://vceplus.com>
VCE to PDF Converter: <https://vceplus.com/vce-to-pdf/>
Facebook: <https://www.facebook.com/VCE.For.All.VN/>
Twitter : https://twitter.com/VCE_Plus

<https://vceplus.com/>

Microsoft Azure Administrator

Question Set 1

QUESTION 1

You have an Azure subscription named Subscription1 that contains an Azure Log Analytics workspace named Workspace1.

You need to view the error events from a table named Event.

<https://vceplus.com/>

Which query should you run in Workspace1?

- A. `Get-Event Event | where {$_.EventType -eq "error"}`
- B. `Get-Event Event | where {$_.EventType == "error"}`
- C. `search in (Event) * | where EventType -eq "error"`
- D. `search in (Event) "error"`



<https://vceplus.com/>

- E. `select *from Event where EventType == "error"`
- F. `Event | where EventType is "error"`



Correct Answer: D

Section: [none]

Explanation

Explanation/Reference:

Explanation:

To search a term in a specific table, add in (table-name) just after the search operator

Reference: <https://docs.microsoft.com/en-us/azure/azure-monitor/log-query/search-queries> <https://docs.microsoft.com/en-us/azure/azure-monitor/log-query/get-started-portal>

QUESTION 2

You have an Azure subscription named Subscription1. Subscription1 contains the resource groups in the following table.

Name	Azure region	Policy
RG1	West Europe	Policy1
RG2	North Europe	Policy2
RG3	France Central	Policy3

<https://vceplus.com/>

RG1 has a web app named WebApp1. WebApp1 is located in West Europe.

You move WebApp1 to RG2.

What is the effect of the move?

- A. The App Service plan for WebApp1 moves to North Europe. Policy2 applies to WebApp1.
- B. The App Service plan for WebApp1 remains in West Europe. Policy2 applies to WebApp1.
- C. The App Service plan for WebApp1 moves to North Europe. Policy1 applies to WebApp1.
- D. The App Service plan for WebApp1 remains in West Europe. Policy1 applies to WebApp1.

Correct Answer: B

Section: [none]

Explanation

Explanation/Reference:

Explanation:

You can move an app to another App Service plan, as long as the source plan and the target plan are in the same resource group and geographical region. The region in which your app runs is the region of the App Service plan it's in. However, you cannot change an App Service plan's region.

References: <https://docs.microsoft.com/en-us/azure/app-service/app-service-plan-manage>

QUESTION 3

You have an Azure subscription that contains a resource group named RG1. RG1 contains 100 virtual machines.

Your company has three cost centers named Manufacturing, Sales, and Finance.

You need to associate each virtual machine to a specific cost center.

What should you do?

- A. Configure locks for the virtual machine.
- B. Add an extension to the virtual machines.
- C. Assign tags to the virtual machines.
- D. Modify the inventory settings of the virtual machine.

Correct Answer: C

Section: [none]

Explanation

<https://vceplus.com/>

Explanation/Reference:

References: <https://docs.microsoft.com/en-us/azure/billing/billing-getting-started>
<https://docs.microsoft.com/en-us/azure/azure-resource-manager/resource-group-using-tags>

QUESTION 4

Note: This question is part of a series of questions that present the same scenario. Each question in the series contains a unique solution that might meet the stated goals. Some question sets might have more than one correct solution, while others might not have a correct solution.

After you answer a question in this section, you will NOT be able to return to it. As a result, these questions will not appear in the review screen.

You have an Azure subscription named Subscription1. Subscription1 contains a resource group named RG1. RG1 contains resources that were deployed by using templates.

You need to view the date and time when the resources were created in RG1.

Solution: From the Subscriptions blade, you select the subscription, and then click **Programmatic deployment**.

Does this meet the goal?

- A. Yes
- B. No

Correct Answer: B

Section: [none]

Explanation

Explanation/Reference:

QUESTION 5

Note: This question is part of a series of questions that present the same scenario. Each question in the series contains a unique solution that might meet the stated goals. Some question sets might have more than one correct solution, while others might not have a correct solution.

After you answer a question in this section, you will NOT be able to return to it. As a result, these questions will not appear in the review screen.

You have an Azure subscription named Subscription1. Subscription1 contains a resource group named RG1. RG1 contains resources that were deployed by using templates.

You need to view the date and time when the resources were created in RG1.

<https://vceplus.com/>

Solution: From the Subscriptions blade, you select the subscription, and then click **Resource providers**.

Does this meet the goal?

- A. Yes
- B. No

Correct Answer: B

Section: [none]

Explanation

Explanation/Reference:

QUESTION 6

Note: This question is part of a series of questions that present the same scenario. Each question in the series contains a unique solution that might meet the stated goals. Some question sets might have more than one correct solution, while others might not have a correct solution.

After you answer a question in this section, you will NOT be able to return to it. As a result, these questions will not appear in the review screen.

You have an Azure subscription named Subscription1. Subscription1 contains a resource group named RG1. RG1 contains resources that were deployed by using templates.

You need to view the date and time when the resources were created in RG1.

Solution: From the RG1 blade, you click **Automation script**.

Does this meet the goal?

- A. Yes
- B. No

Correct Answer: B

Section: [none]

Explanation

Explanation/Reference:

QUESTION 7

HOTSPOT

You have an Azure Active Directory (Azure AD) tenant that contains three global administrators named Admin1, Admin2, and Admin3.

The tenant is associated to an Azure subscription. Access control for the subscription is configured as shown in the **Access control** exhibit. (Click the **Exhibit** tab.)

+ Add
Remove
Roles
Refresh
? Help

Name ⓘ

Type ⓘ

All ▼

Role ⓘ

3 selected ▼


Scope ⓘ

All scopes ▼



Group by ⓘ

Role ▼


5 items (4Users, 1 Service Principals)

<input type="checkbox"/>	NAME	TYPE	ROLE	SCOPE	OWNER
	Admin3 Admin3@contltd...	User	Owner ⓘ	Service administrat...	This resource

You sign in to the Azure portal as Admin1 and configure the tenant as shown in the **Tenant** exhibit. (Click the **Exhibit** tab.)

 Save  Discard

* Name

Contoso 


Country or region

United States

Location

United States datacenters

Notification language


English 

Global admin can manage Azure Subscriptions and Management Groups

Yes

No

Directory ID

a8ccb016-31f3-4582-b9b7-854f413d7177 

Technical contact

Global privacy contact

Privacy statement URL

For each of the following statements, select Yes if the statement is true. Otherwise, select No.

NOTE: Each correct selection is worth one point.

Hot Area:

Answer Area

Statements	Yes	No
Admin1 can add Admin2 as an owner of the subscription.	<input type="radio"/>	<input type="radio"/>
Admin2 can add Admin1 as an owner of the subscription.	<input type="radio"/>	<input type="radio"/>
Admin2 can create a resource group in the subscription.	<input type="radio"/>	<input type="radio"/>

Correct Answer:

Answer Area

Statements	Yes	No
Admin1 can add Admin2 as an owner of the subscription.	<input checked="" type="radio"/>	<input type="radio"/>
Admin2 can add Admin1 as an owner of the subscription.	<input checked="" type="radio"/>	<input type="radio"/>
Admin2 can create a resource group in the subscription.	<input type="radio"/>	<input checked="" type="radio"/>

Section: [none]

Explanation

Explanation/Reference:

<https://vceplus.com/>

QUESTION 8

You have an Azure policy as shown in the following exhibit.



SCOPE

• Scope ([Learn more about setting the scope](#))

Subscription1

Exclusions

Subscription1/ContosoRG1

BASICS

• Policy definition

Not allowed resource types

• Assignment name ⓘ

Not allowed resource types

Assignment ID

/subscription/5eb8d0b6-ce3b-4ce0-a631-9f5321bedabb/providers/Microsoft.Authorization/policy/Assignments/0e6fb866bf854f54accac2a9

Description

Assigned by

admin1@contoso.com

PARAMETERS

• Not allowed resource types ⓘ

Microsoft.Sql/servers

What is the effect of the policy?

- A. You are prevented from creating Azure SQL Servers in ContosoRG1 only.
- B. You can create Azure SQL servers in ContosoRG1 only.
- C. You can create Azure SQL servers in any resource group within Subscription1.
- D. You are prevented from creating Azure SQL servers anywhere in Subscription1.

Correct Answer: B

Section: [none]

Explanation

Explanation/Reference:

Explanation:

You are prevented from creating Azure SQL servers anywhere in Subscription 1 with the exception of ContosoRG1

QUESTION 9

Note: This question is part of a series of questions that present the same scenario. Each question in the series contains a unique solution that might meet the stated goals. Some question sets might have more than one correct solution, while others might not have a correct solution.

After you answer a question in this section, you will NOT be able to return to it. As a result, these questions will not appear in the review screen.

You have an Azure Active Directory (Azure AD) tenant named Adatum and an Azure Subscription named Subscription1. Adatum contains a group named Developers. Subscription1 contains a resource group named Dev.

You need to provide the Developers group with the ability to create Azure logic apps in the Dev resource group.

Solution: On Subscription1, you assign the DevTest Labs User role to the Developers group.

Does this meet the goal?

- A. Yes
- B. No

Correct Answer: B

Section: [none]

Explanation

Explanation/Reference:

Explanation:

DevTest Labs User role only lets you connect, start, restart, and shutdown virtual machines in your Azure DevTest Labs.

<https://vceplus.com/>

The Logic App Contributor role lets you manage logic app, but not access to them. It provides access to view, edit, and update a logic app.

References: <https://docs.microsoft.com/en-us/azure/role-based-access-control/built-in-roles> <https://docs.microsoft.com/en-us/azure/logic-apps/logic-apps-securing-a-logic-app>

QUESTION 10

You have an Azure Active Directory (Azure AD) tenant that contains 5,000 user accounts.

You create a new user account named AdminUser1.

You need to assign the User administrator administrative role to AdminUser1.

What should you do from the user account properties?

- A. From the Directory role blade, modify the directory role.
- B. From the Licenses blade, assign a new license.
- C. From the Groups blade, invite the user account to a new group.

Correct Answer: A

Section: [none]

Explanation



Explanation/Reference:

Explanation:

Assign a role to a user

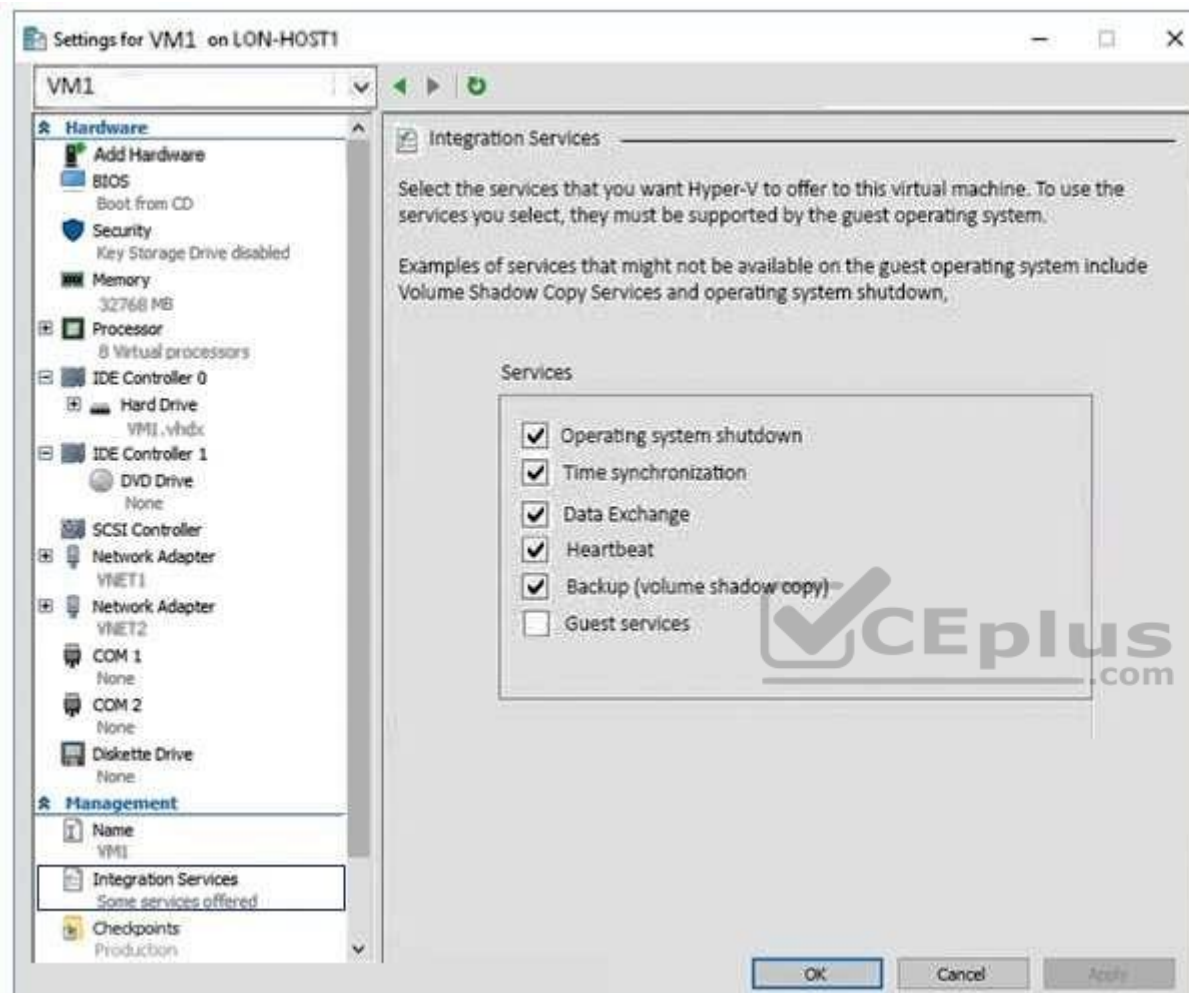
1. Sign in to the Azure portal with an account that's a global admin or privileged role admin for the directory.
2. Select Azure Active Directory, select Users, and then select a specific user from the list.
3. For the selected user, select Directory role, select Add role, and then pick the appropriate admin roles from the Directory roles list, such as Conditional access administrator.
4. Press Select to save.

References: <https://docs.microsoft.com/en-us/azure/active-directory/fundamentals/active-directory-users-assign-role-azure-portal>

QUESTION 11

You have an Azure subscription.

You have an on-premises virtual machine named VM1. The settings for VM1 are shown in the exhibit. (Click the **Exhibit** tab.)



You need to ensure that you can use the disks attached to VM1 as a template for Azure virtual machines.

What should you modify on VM1?

- A. the hard drive
- B. the processor
- C. the network adapters

- D. the memory
- E. Integration Services

Correct Answer: A

Section: [none]

Explanation

Explanation/Reference:

Explanation:

From the exhibit we see that the disk is in the VHDX format.

Before you upload a Windows virtual machines (VM) from on-premises to Microsoft Azure, you must prepare the virtual hard disk (VHD or VHDX). Azure supports only generation 1 VMs that are in the VHD file format and have a fixed sized disk. The maximum size allowed for the VHD is 1,023 GB. You can convert a generation 1 VM from the VHDX file system to VHD and from a dynamically expanding disk to fixed-sized.

Reference:

<https://docs.microsoft.com/en-us/azure/virtual-machines/windows/prepare-for-upload-vhd-image?toc=%2fazure%2fvirtual-machines%2fwindows%2ftoc.json>

QUESTION 12

Your company has an Azure subscription named Subscription1.

The company also has two on-premises servers named Server1 and Server2 that run Windows Server 2016. Server1 is configured as a DNS server that has a primary DNS zone named adatum.com. Adatum.com contains 1,000 DNS records.

You manage Server1 and Subscription1 from Server2. Server2 has the following tools installed:

- The DNS Manager console
- Azure PowerShell
- Azure CLI 2.0

You need to move the adatum.com zone to Subscription1. The solution must minimize administrative effort.

What should you use?

- A. the Azure portal
- B. the DNS Manager console
- C. Azure PowerShell
- D. Azure CLI

Correct Answer: D

Section: [none]

Explanation

Explanation/Reference:

Explanation:

Azure DNS supports importing and exporting zone files by using the Azure command-line interface (CLI). Zone file import is not currently supported via Azure PowerShell or the Azure portal.

References: <https://docs.microsoft.com/en-us/azure/dns/dns-import-export>

QUESTION 13

You have a resource group named RG1. RG1 contains an Azure Storage account named storageaccount1 and a virtual machine named VM1 that runs Windows Server 2016. Storageaccount1 contains the disk files for VM1.

You apply a ReadOnly lock to RG1.

What can you do from the Azure portal?

- A. Generate an automation script for RG1.
- B. View the keys of storageaccount1.
- C. Start VM1.
- D. Upload a blob to storageaccount1.



Correct Answer: B

Section: [none]

Explanation

Explanation/Reference:

Explanation:

As an administrator, you may need to lock a subscription, resource group, or resource to prevent other users in your organization from accidentally deleting or modifying critical resources.

ReadOnly means authorized users can read a resource, but they can't delete or update the resource. Applying this lock is similar to restricting all authorized users to the permissions granted by the Reader role.

Incorrect Answers:

C: A ReadOnly lock on a resource group that contains a virtual machine prevents all users from starting or restarting the virtual machine. These operations require a POST request.

References: <https://docs.microsoft.com/en-us/azure/azure-resource-manager/resource-group-lock-resources>

QUESTION 14

You have an Azure Active Directory (Azure AD) tenant named contoso.onmicrosoft.com that contains 100 user accounts.

You purchase 10 Azure AD Premium P2 licenses for the tenant.

You need to ensure that 10 users can use all the Azure AD Premium features.

What should you do?

- A. From the Directory role blade of each user, modify the directory role.
- B. From the Azure AD domain, add an enterprise application.
- C. From the Groups blade of each user, invite the users to a group.
- D. From the Licenses blade of Azure AD, assign a license.

Correct Answer: D

Section: [none]

Explanation



Explanation/Reference:

Reference: <https://docs.microsoft.com/en-us/azure/active-directory/fundamentals/license-users-groups>

QUESTION 15

You have an Azure subscription.

You have 100 Azure virtual machines.

You need to quickly identify underutilized virtual machines that can have their service tier changed to a less expensive offering.

Which blade should you use?

- A. Metrics
- B. Monitor
- C. Customer insights
- D. Advisor

Correct Answer: D

Section: [none]

Explanation

Explanation/Reference:

Explanation:

Advisor helps you optimize and reduce your overall Azure spend by identifying idle and underutilized resources. You can get cost recommendations from the Cost tab on the Advisor dashboard.

Reference:

<https://docs.microsoft.com/en-us/azure/advisor/advisor-cost-recommendations>

QUESTION 16

Note: This question is part of a series of questions that present the same scenario. Each question in the series contains a unique solution that might meet the stated goals. Some question sets might have more than one correct solution, while others might not have a correct solution.

After you answer a question in this section, you will NOT be able to return to it. As a result, these questions will not appear in the review screen.

You have an Azure subscription named Subscription1. Subscription1 contains a resource group named RG1. RG1 contains resources that were deployed by using templates.

You need to view the date and time when the resources were created in RG1.

Solution: From the RG1 blade, you click **Deployments**.

Does this meet the goal?

A. Yes

B. No

Correct Answer: A

Section: [none]

Explanation

Explanation/Reference:

Explanation:

From the RG1 blade, click Deployments. You see a history of deployment for the resource group.

Reference: <https://docs.microsoft.com/en-us/azure/azure-resource-manager/templates/template-tutorial-create-first-template?tabs=azure-powershell> **Testlet 2**

Case study

This is a case study. **Case studies are not timed separately. You can use as much exam time as you would like to complete each case.** However, there may be additional case studies and sections on this exam. You must manage your time to ensure that you are able to complete all questions included on this exam in the time provided.

To answer the questions included in a case study, you will need to reference information that is provided in the case study. Case studies might contain exhibits and other resources that provide more information about the scenario that is described in the case study. Each question is independent of the other questions in this case study.

At the end of this case study, a review screen will appear. This screen allows you to review your answers and to make changes before you move to the next section of the exam. After you begin a new section, you cannot return to this section.

To start the case study

To display the first question in this case study, click the **Next** button. Use the buttons in the left pane to explore the content of the case study before you answer the questions. Clicking these buttons displays information such as business requirements, existing environment, and problem statements. If the case study has an **All Information** tab, note that the information displayed is identical to the information displayed on the subsequent tabs. When you are ready to answer a question, click the **Question** button to return to the question. **Overview**

Humongous Insurance is an insurance company that has three offices in Miami, Tokyo and Bangkok. Each office has 5,000 users.

Existing Environment

Active Directory Environment

Humongous Insurance has a single-domain Active Directory forest named humongousinsurance.com. The functional level of the forest is Windows Server 2012.

You recently provisioned an Azure Active Directory (Azure AD) tenant.

Network Infrastructure

Each office has a local data center that contains all the servers for that office. Each office has a dedicated connection to the Internet.

Each office has several link load balancers that provide access to the servers.

Active Directory Issue

Several users in humongousinsurance.com have UPNs that contain special characters.

You suspect that some of the characters are unsupported in Azure AD.

Licensing Issue

You attempt to assign a license in Azure to several users and receive the following error message: "Licenses not assigned. License assignment failed for one user." You verify that the Azure subscription has the available licenses.

Requirements

Planned Changes

Humongous Insurance plans to open a new office in Paris. The Paris office will contain 1,000 users who will be hired during the next 12 months. All the resources used by the Paris office users will be hosted in Azure.

Planned Azure AD Infrastructure

The on-premises Active Directory domain will be synchronized to Azure AD.

All client computers in the Paris office will be joined to an Azure AD domain.

Planned Azure Networking Infrastructure

You plan to create the following networking resources in a resource group named All_Resources:

- Default Azure system routes that will be the only routes used to route traffic
- A virtual network named Paris-VNet that will contain two subnets named Subnet1 and Subnet2
- A virtual network named ClientResources-VNet that will contain one subnet named ClientSubnet
- A virtual network named AllOffices-VNet that will contain two subnets named Subnet3 and Subnet4

You plan to enable peering between Paris-VNet and AllOffices-VNet. You will enable the **Use remote gateways** setting for the Paris-VNet peerings.

You plan to create a private DNS zone named humongousinsurance.local and set the registration network to the ClientResources-VNet virtual network.

Planned Azure Computer Infrastructure

Each subnet will contain several virtual machines that will run either Windows Server 2012 R2, Windows Server 2016, or Red Hat Linux.

Department Requirements

Humongous Insurance identifies the following requirements for the company's departments:

- Web administrators will deploy Azure web apps for the marketing department. Each web app will be added to a separate resource group. The initial configuration of the web apps will be identical. The web administrators have permission to deploy web apps to resource groups.
- During the testing phase, auditors in the finance department must be able to review all Azure costs from the past week.

Authentication Requirements

Users in the Miami office must use Azure Active Directory Seamless Single Sign-on (Azure AD Seamless SSO) when accessing resources in Azure.

QUESTION 1

You need to resolve the licensing issue before you attempt to assign the license again.

What should you do?

- A. From the Groups blade, invite the user accounts to a new group.
- B. From the Profile blade, modify the usage location.
- C. From the Directory role blade, modify the directory role.

<https://vceplus.com/>

Correct Answer: A

Section: [none]

Explanation

Explanation/Reference:

Explanation:

License cannot be assigned to a user without a usage location specified.

Scenario: Licensing Issue

You attempt to assign a license in Azure to several users and receive the following error message: "Licenses not assigned. License agreement failed for one user."

You verify that the Azure subscription has the available licenses.

QUESTION 2

You need to resolve the Active Directory issue.

What should you do?

- A. Run the IdFix tool then use the Update actions.
- B. From Active Directory Domains and Trusts, modify the list of UPN suffixes.
- C. From Azure AD Connect, modify the outbound synchronization rule.
- D. From Active Directory Users and Computers, select the user accounts and then modify the UPN suffix value.

Correct Answer: A

Section: [none]

Explanation

Explanation/Reference:

Explanation:

IdFix is used to perform discovery and remediation of identity objects and their attributes in an on-premises Active Directory environment in preparation for migration to Azure Active Directory. IdFix is intended for the Active Directory administrators responsible for directory synchronization with Azure Active Directory.

Scenario: Active Directory Issue

Several users in humongousinsurance.com have UPNs that contain special characters.

You suspect that some of the characters are unsupported in Azure AD.

References: <https://www.microsoft.com/en-us/download/details.aspx?id=36832>

QUESTION 3

You need to define a custom domain name for Azure AD to support the planned infrastructure.

<https://vceplus.com/>

Which domain name should you use?

- A. ad.humongousinsurance.com
- B. humingousinsurance.onmicrosoft.com
- C. humongousinsurance.com
- D. humongousinsurance.local

Correct Answer: C

Section: [none]

Explanation

Explanation/Reference:

Explanation:

Every Azure AD directory comes with an initial domain name in the form of domainname.onmicrosoft.com. The initial domain name cannot be changed or deleted, but you can add your corporate domain name to Azure AD as well. For example, your organization probably has other domain names used to do business and users who sign in using your corporate domain name. Adding custom domain names to Azure AD allows you to assign user names in the directory that are familiar to your users, such as 'alice@contoso.com.' instead of 'alice@domain name.onmicrosoft.com'.

Scenario:

Network Infrastructure: Each office has a local data center that contains all the servers for that office. Each office has a dedicated connection to the Internet.

Humongous Insurance has a single-domain Active Directory forest named humongousinsurance.com

Planned Azure AD Infrastructure: The on-premises Active Directory domain will be synchronized to Azure

AD.

References: <https://docs.microsoft.com/en-us/azure/active-directory/fundamentals/add-custom-domain> **Question Set 1**

QUESTION 1

SIMULATION

Please wait while the virtual machine loads. Once loaded, you may proceed to the lab section. This may take a few minutes, and the wait time will not be deducted from your overall test time.

When the Next button is available, click it to access the lab section. In this section, you will perform a set of tasks in a live environment. While most functionality will be available to you as it would be in a live environment, some functionality (e.g. copy and paste, ability to navigate to external websites) will not be possible by design.

Scoring is based on the outcome of performing the tasks stated in the lab. In other words, it doesn't matter how you accomplish the task, if you successfully perform it, you will earn credit for that task.

Labs are not timed separately, and this exam may have more than one lab that you must complete. You can use as much time as you would like to complete each lab. But, you should manage your time appropriately to ensure that you are able to complete the lab(s) and all other sections of the exam in the time provided.

Please note that once you submit your work by clicking the Next button within a lab, you will NOT be able to return to the lab.

You may now click next to proceed to the lab.

Use the following login credentials as needed:

Azure Username: XXXXXXXX

Azure Password: XXXXXXXX

The following information is for technical support purposes only:

Lab Instance: 9172796



You recently created a virtual machine named Web01.

You need to attach a new 80-GB standard SSD data disk named Web01-Disk1 to Web01.

What should you do from the Azure portal?

Correct Answer: See solution below.

Section: [none]

Explanation

Explanation/Reference:

Explanation:

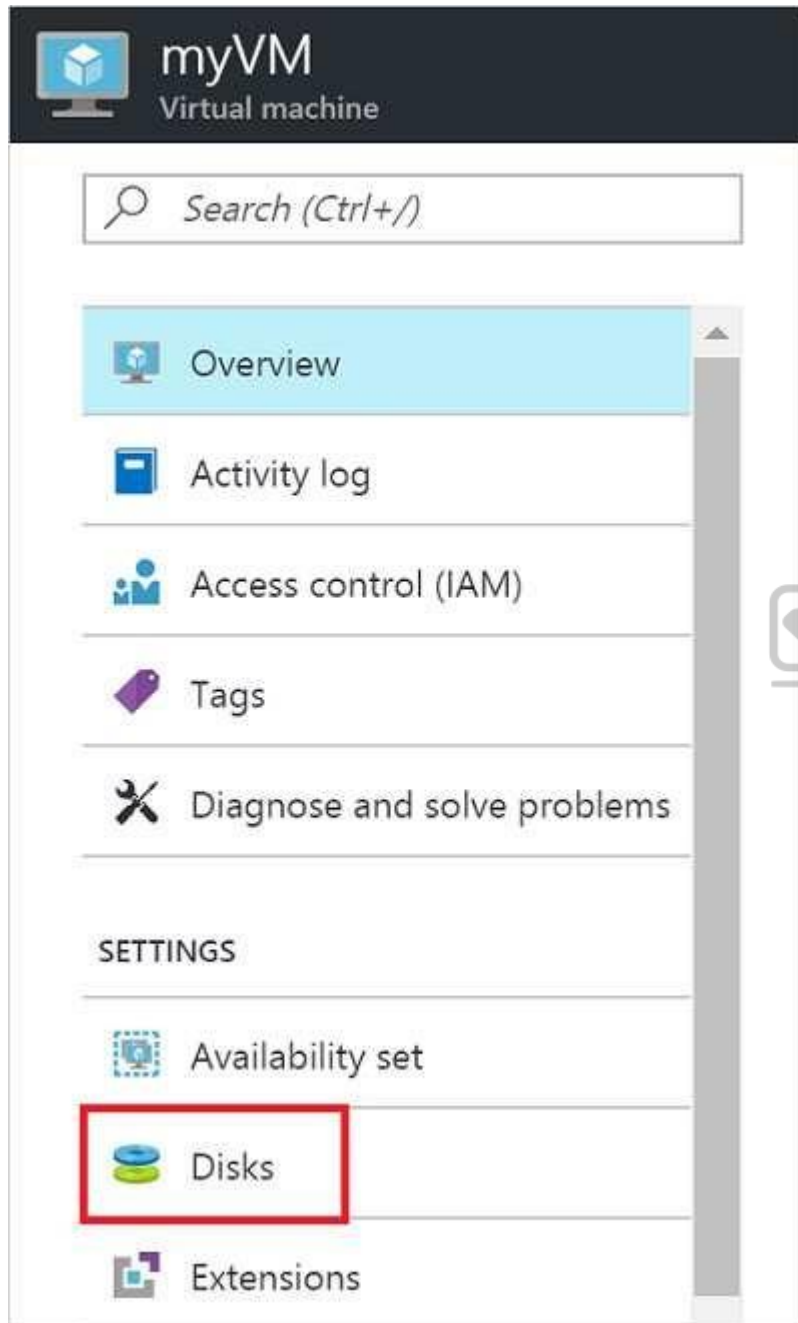
Add a data disk

Step 1: In the Azure portal, from the menu on the left, select **Virtual machines**.

Step 2: Select the Web01 virtual machine from the list.

Step 3: On the **Virtual machine** page, , in Essentials, select **Disks**.





Step 4: On the **Disks** page, select the Web01-Disk1 from the list of existing disks.

Step 5: In the Disks pane, click + Add data disk.

Step 6: Click the drop-down menu for Name to view a list of existing managed disks accessible to your Azure subscription. Select the managed disk Web01-Disk1 to attach:

Save

Discard

OS disk

NAME	SIZE	ACCOUNT TYPE
myVM		Premium_LRS

Data disks

LUN	NAME	SIZE	ACCOUNT TYPE
0	myDataDisk	1023 GiB	Premium_LRS

1

Create disk

Disks in resource group 'myResourceGroup'

myExistingDisk
size: 1023 GiB, account type: Premium_LRS

All disks

myExistingDisk
size: 1023 GiB, account type: Premium_LRS, resource group: MYRESOURCEGROUP

References: <https://docs.microsoft.com/en-us/azure/virtual-machines/linux/attach-disk-portal>

QUESTION 2

You plan to use the Azure Import/Export service to copy files to a storage account.

Which two files should you create before you prepare the drives for the import job? Each correct answer presents part of the solution.

<https://vceplus.com/>

NOTE: Each correct selection is worth one point.

- A. a driveset CSV file
- B. a JSON configuration file
- C. a PowerShell PS1 file
- D. an XML manifest file
- E. a dataset CSV file

Correct Answer: AE

Section: [none]

Explanation

Explanation/Reference:

Explanation:

A: Modify the driveset.csv file in the root folder where the tool resides.

E: Modify the dataset.csv file in the root folder where the tool resides. Depending on whether you want to import a file or folder or both, add entries in the dataset.csv file

References: <https://docs.microsoft.com/en-us/azure/storage/common/storage-import-export-data-to-files>

QUESTION 3

You create an Azure Storage account named contosostorage.

You plan to create a file share named data.

Users need to map a drive to the data file share from home computers that run Windows 10.

Which outbound port should you open between the home computers and the data file share?

- A. 80
- B. 443
- C. 445
- D. 3389

Correct Answer: C

Section: [none]

Explanation

Explanation/Reference:

Explanation:

Ensure port 445 is open: The SMB protocol requires TCP port 445 to be open; connections will fail if port 445 is blocked.

References: <https://docs.microsoft.com/en-us/azure/storage/files/storage-how-to-use-files-windows>

QUESTION 4

HOTSPOT

You have several Azure virtual machines on a virtual network named VNet1.

You configure an Azure Storage account as shown in the following exhibit.



Home > Storage accounts > contoso – Firewalls and virtual networks

contoso – Firewalls and virtual networks

Storage Account

Search (Ctrl+J)

Overview

Activity log

Access control (IAM)

Tags

Diagnose and solve problems

Events

Storage Explorer (preview)

SETTINGS

Access keys

Configuration

Encryption

Shared access signature

Firewalls and virtual networks

Properties

Locks

Automation script

Save Discard

Allow access from

☐ All networks
 ☒ Selected networks

Configure network security for your storage accounts. [Learn more.](#)

Virtual networks

Secure your storage account with virtual networks. [+ Add existing virtual network](#)

[+ Add new virtual network](#)

VIRTUAL NET...	SUBNET	ADDRESS RA...	ENDPOINT ST...	RESOURCE G...	SUBSCRIPTION
▼ VNet1	1	10.2.0.0/16		DemoRG	Production subscrip ...
	Prod	10.2.0.0/24	✓ Enabled	DemoRG	Production subscrip ...

Firewall

Add IP ranges to allow access from the internet or your on-premises networks. [Learn more.](#)

ADDRESS RANGE

Exceptions

☐ Allow trusted Microsoft services to access this storage account ⓘ
 ☐ Allow read access to storage logging from any network
 ☐ Allow read access to storage metrics from any network

Use the drop-down menus to select the answer choice that completes each statement based on the information presented in the graphic.

NOTE: Each correct selection is worth one point.

Hot Area:

Answer Area

The virtual machines on the 10.2.9.0/24 subnet will have network connectivity to the file shares in the storare account

	▼
always	
during a backup	
never	

Azure Backup will be able to back up the unmanaged hard disks of the virtual machines in the storage account

	▼
always	
during a backup	
never	

Correct Answer:

Answer Area

The virtual machines on the 10.2.9.0/24 subnet will have network connectivity to the file shares in the storare account

	▼
always	
during a backup	
never	

Azure Backup will be able to back up the unmanaged hard disks of the virtual machines in the storage account

	▼
always	
during a backup	
never	

Section: [none]
Explanation

Explanation/Reference:

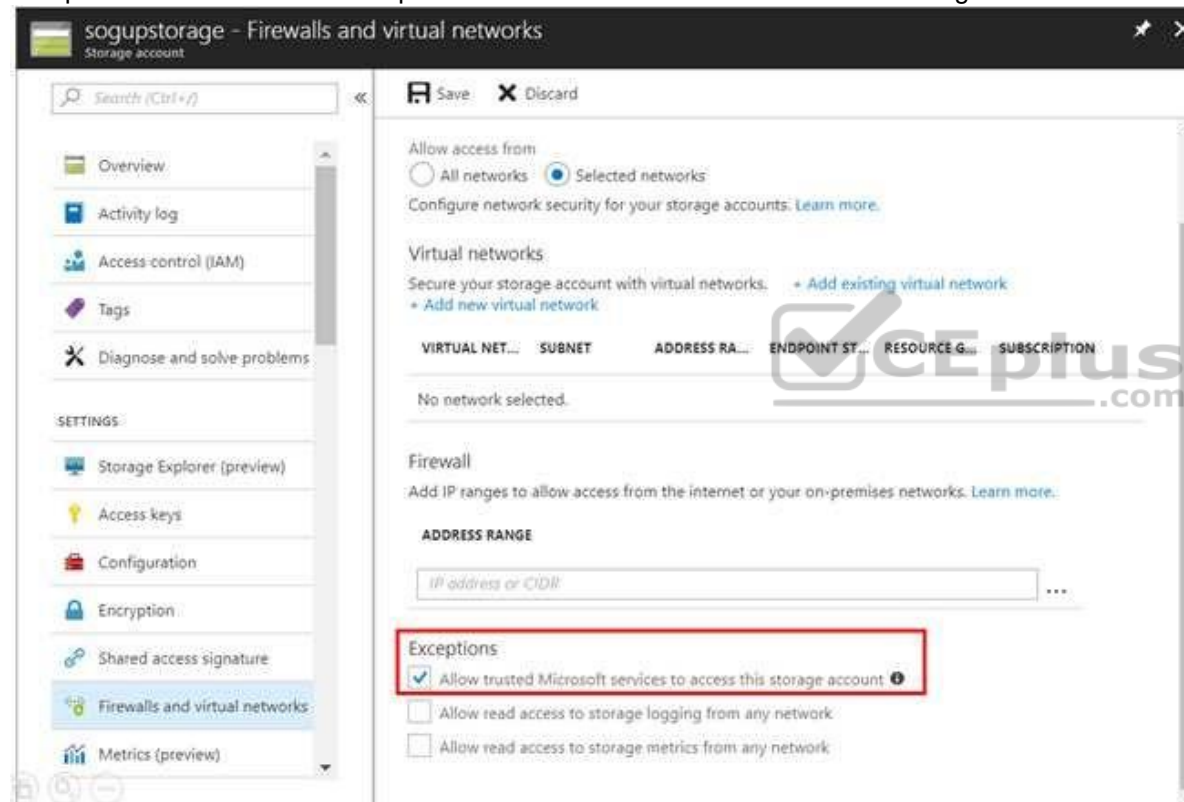
Explanation:

Box 1: always

Endpoint status is enabled.

Box 2: Never

After you configure firewall and virtual network settings for your storage account, select Allow trusted Microsoft services to access this storage account as an exception to enable Azure Backup service to access the network restricted storage account.



Reference: <https://docs.microsoft.com/en-us/azure/storage/files/storage-how-to-use-files-windows> <https://azure.microsoft.com/en-us/blog/azure-backup-now-supports-storage-accounts-secured-with-azure-storage-firewalls-and-virtual-networks/>

QUESTION 5

You have two Azure virtual machines named VM1 and VM2. You have two Recovery Services vaults named RSV1 and RSV2.

<https://vceplus.com/>

[www.vceplus.com](https://vceplus.com/) - Free Questions & Answers - Online Courses - Convert VCE to PDF - VCEplus.com

VM2 is protected by RSV1.

You need to use RSV2 to protect VM2.

What should you do first?

- A. From the VM2 blade, click **Disaster recovery**, click **Replication settings**, and then select RSV2 as the Recovery Services vault.
- B. From the RSV2 blade, click **Backup**. From the Backup blade, select the backup for the virtual machine, and then click **Backup**.
- C. From the RSV1 blade, click **Backup Jobs** and export the VM2 job.
- D. From the RSV1 blade, click **Backup items** and stop the VM2 backup.

Correct Answer: A

Section: [none]

Explanation

Explanation/Reference:

Reference: <https://docs.microsoft.com/en-us/azure/backup/backup-azure-vms-first-look-arm>

QUESTION 6

You have a Recovery Service vault that you use to test backups. The test backups contain two protected virtual machines.

You need to delete the Recovery Services vault.

What should you do first?

- A. From the Recovery Service vault, delete the backup data.
- B. Modify the disaster recovery properties of each virtual machine.
- C. From the Recovery Service vault, stop the backup of each backup item.
- D. Modify the locks of each virtual machine.

Correct Answer: C

Section: [none]

Explanation

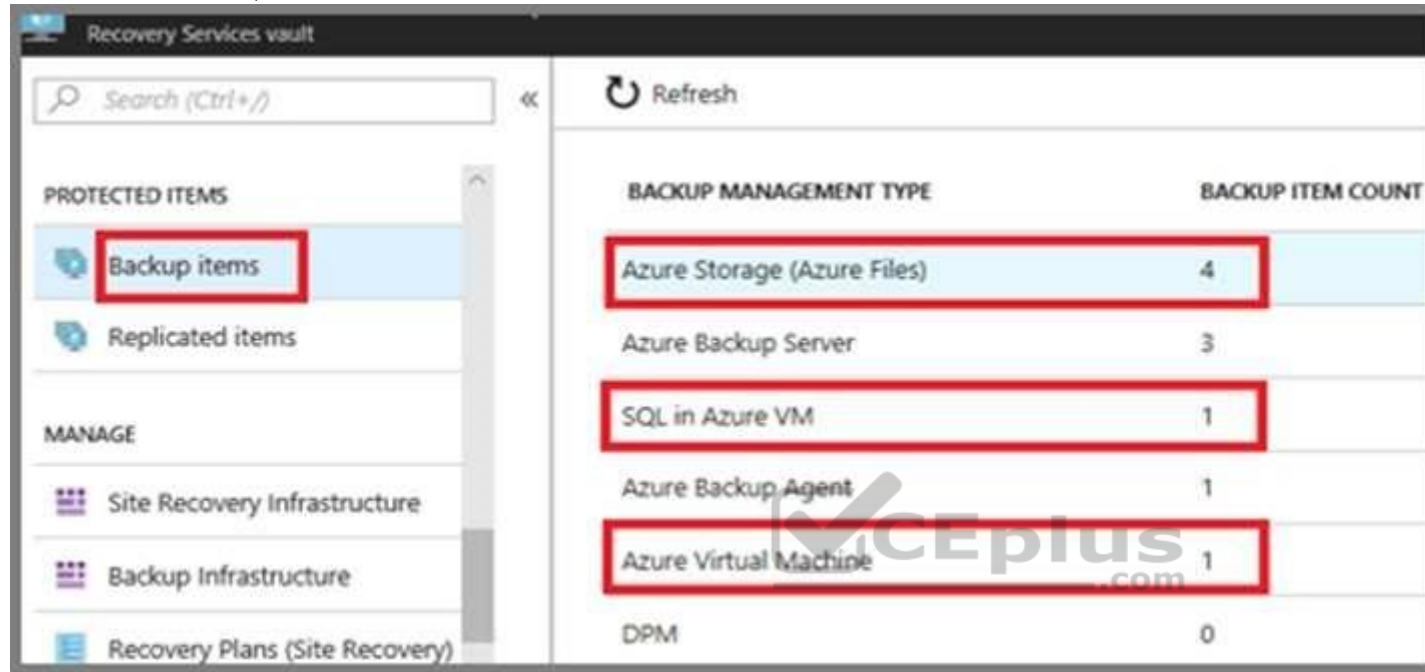
Explanation/Reference:

Explanation:

You can't delete a Recovery Services vault if it is registered to a server and holds backup data. If you try to delete a vault, but can't, the vault is still configured to receive backup data.

Remove vault dependencies and delete vault

In the vault dashboard menu, scroll down to the Protected Items section, and click Backup Items. In this menu, you can stop and delete Azure File Servers, SQL Servers in Azure VM, and Azure virtual machines.



Reference: <https://docs.microsoft.com/en-us/azure/backup/backup-azure-delete-vault>

QUESTION 7

You have an Azure subscription that contains a storage account named account1.

You plan to upload the disk files of a virtual machine to account1 from your on-premises network. The on-premises network uses a public IP address space of 131.107.1.0/24.

You plan to use the disk files to provision an Azure virtual machine named VM1. VM1 will be attached to a virtual network named VNet1. VNet1 uses an IP address space of 192.168.0.0/24.

You need to configure account1 to meet the following requirements:

- Ensure that you can upload the disk files to account1.

- Ensure that you can attach the disks to VM1. ▪
- Prevent all other access to account1.

Which two actions should you perform? Each correct answer presents part of the solution.

NOTE: Each correct selection is worth one point.

- A. From the Firewalls and virtual networks blade of account1, add VNet1.
- B. From the Firewalls and virtual networks blade of account1, select **Allow trusted Microsoft services to access this storage account**.
- C. From the Firewalls and virtual networks blade of account1, add the 131.107.1.0/24 IP address range.
- D. From the Firewalls and virtual networks blade of account1, select **Selected networks**.
- E. From the Service endpoints blade of VNet1, add a service endpoint.

Correct Answer: DE

Section: [none]

Explanation

Explanation/Reference:

Explanation:

D: By default, storage accounts accept connections from clients on any network. To limit access to selected networks, you must first change the default action.

Azure portal

1. Navigate to the storage account you want to secure.
2. Click on the settings menu called Firewalls and virtual networks.
3. To deny access by default, choose to allow access from 'Selected networks'. To allow traffic from all networks, choose to allow access from 'All networks'.
4. Click Save to apply your changes.

E: Grant access from a Virtual Network

Storage accounts can be configured to allow access only from specific Azure Virtual Networks.

By enabling a Service Endpoint for Azure Storage within the Virtual Network, traffic is ensured an optimal route to the Azure Storage service. The identities of the virtual network and the subnet are also transmitted with each request.

Reference: <https://docs.microsoft.com/en-us/azure/storage/common/storage-network-security>

QUESTION 8

SIMULATION

Please wait while the virtual machine loads. Once loaded, you may proceed to the lab section. This may take a few minutes, and the wait time will not be deducted from your overall test time.

When the Next button is available, click it to access the lab section. In this section, you will perform a set of tasks in a live environment. While most functionality will be available to you as it would be in a live environment, some functionality (e.g, copy and paste, ability to navigate to external websites) will not be possible by design.

Scoring is based on the outcome of performing the tasks stated in the lab. In other words, it doesn't matter how you accomplish the task, if you successfully perform it, you will earn credit for that task.

Labs are not timed separately, and this exam may have more than one lab that you must complete. You can use as much time as you would like to complete each lab. But, you should manage your time appropriately to ensure that you are able to complete the lab(s) and all other sections of the exam in the time provided.

Please note that once you submit your work by clicking the Next button within a lab, you will NOT be able to return to the lab.

You may now click next to proceed to the lab.

Use the following login credentials as needed:

Azure Username: XXXXXXXX

Azure Password: XXXXXXXX

The following information is for technical support purposes only:

Lab Instance: 9172796





You plan to store media files in the rg1lod9172796 storage account.

You need to configure the storage account to store the media files. The solution must ensure that only users who have access keys can download the media files and that the files are accessible only over HTTPS.

What should you do from the Azure portal?

Correct Answer: See solution below.

Section: [none]

Explanation

Explanation/Reference:

Explanation:

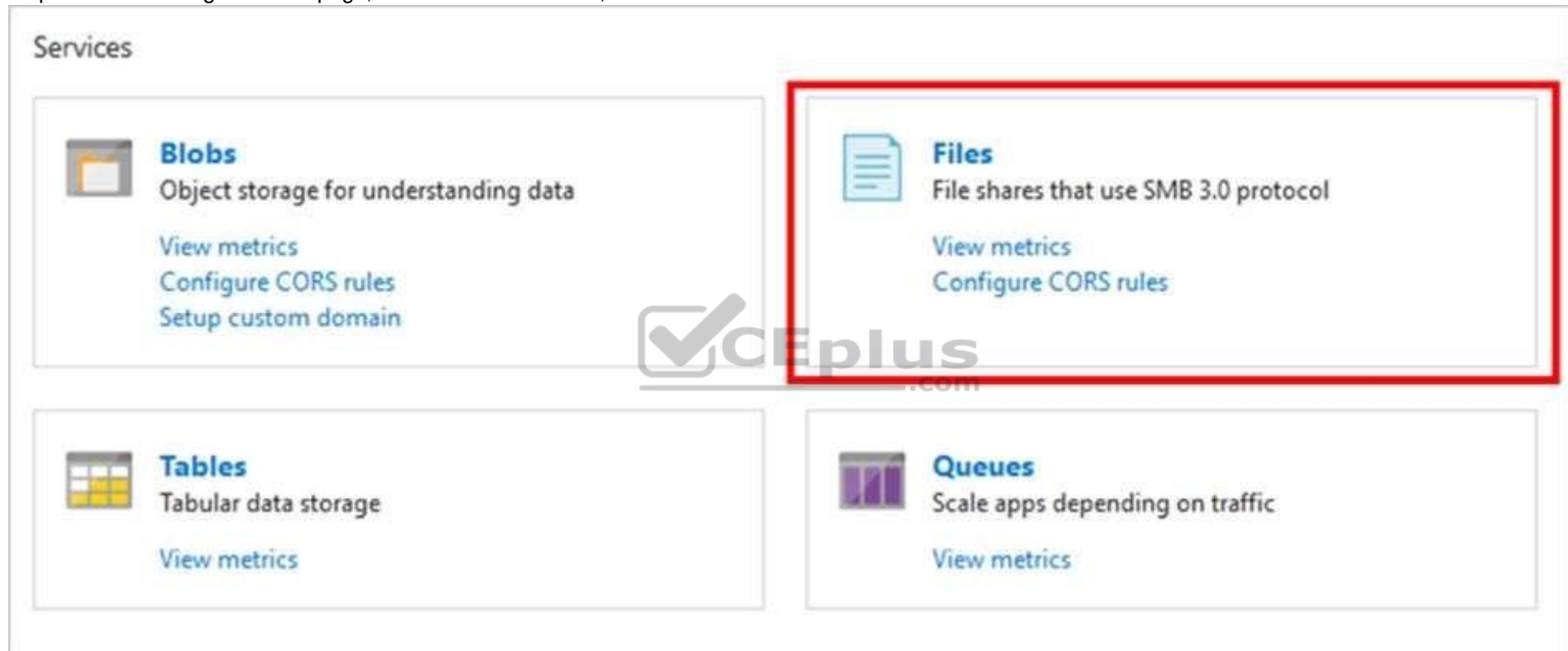
We should create an Azure file share.

Step 1: In the Azure portal, select All services. In the list of resources, type Storage Accounts. As you begin typing, the list filters based on your input. Select Storage Accounts.

On the Storage Accounts window that appears.

Step 2: Locate the rg1lod9172796 storage account.

Step 3: On the storage account page, in the Services section, select Files.



Step 4: On the menu at the top of the File service page, click + File share. The New file share page drops down.

Step 5: In Name type myshare. Click OK to create the Azure file share.

References:

<https://docs.microsoft.com/en-us/azure/storage/files/storage-how-to-use-files-portal>

QUESTION 9

<https://vceplus.com/>

You have an Azure subscription named Subscription1.

You have 5 TB of data that you need to transfer to Subscription1.

You plan to use an Azure Import/Export job.

What can you use as the destination of the imported data?

- A. an Azure Cosmos DB database
- B. Azure File Storage
- C. the Azure File Sync Storage Sync Service
- D. Azure Data Factory

Correct Answer: B

Section: [none]

Explanation

Explanation/Reference:

Explanation:

Azure Import/Export service is used to securely import large amounts of data to Azure Blob storage and Azure Files by shipping disk drives to an Azure datacenter.

The maximum size of an Azure Files Resource of a file share is 5 TB.

Reference:

<https://docs.microsoft.com/en-us/azure/storage/common/storage-import-export-service>

QUESTION 10

You have an Azure subscription that contains the resources in the following table.

Name	Type
RG1	Resource group
Store1	Azure Storage account
Sync1	Azure File Sync

Store1 contains a file share named Data. Data contains 5,000 files.

You need to synchronize the files in the file share named Data to an on-premises server named Server1.

Which three actions should you perform? Each correct answer presents part of the solution.

NOTE: Each correct selection is worth one point.

<https://vceplus.com/>

- A. Download an automation script.
- B. Register Server1.
- C. Create a sync group.
- D. Create a container instance.
- E. Install the Azure File Sync agent on Server1.

Correct Answer: BCE

Section: [none]

Explanation

Explanation/Reference:

Explanation:

Step 1 (E): Install the Azure File Sync agent on Server1

The Azure File Sync agent is a downloadable package that enables Windows Server to be synced with an Azure file share

Step 2 (B): Register Server1.

Register Windows Server with Storage Sync Service

Registering your Windows Server with a Storage Sync Service establishes a trust relationship between your server (or cluster) and the Storage Sync Service.

Step 3 (C): Create a sync group and a cloud endpoint.

A sync group defines the sync topology for a set of files. Endpoints within a sync group are kept in sync with each other. A sync group must contain one cloud endpoint, which represents an Azure file share and one or more server endpoints. A server endpoint represents a path on registered server.

References: <https://docs.microsoft.com/en-us/azure/storage/files/storage-sync-files-deployment-guide>

QUESTION 11

DRAG DROP

You have an Azure subscription named Subscription1.

You create an Azure Storage account named contosostorage, and then you create a file share named data.

Which UNC path should you include in a script that references files from the data file share? To answer, drag the appropriate values to the correct targets. Each value may be used once, more than once, or not at all. You may need to drag the split bar between panes or scroll to view content.

NOTE: Each correct selection is worth one point.

Select and Place:

Values

Answer Area

blob

blob.core.windows.net

contosostorage

data

file

file.core.windows.net

portal.azure.com

subscription1

W . \

Correct Answer:

Values

Answer Area

blob

blob.core.windows.net

contosostorage

data

file

file.core.windows.net

portal.azure.com

subscription1

W . \

Section: [none]

Explanation

Explanation/Reference:

Explanation:

Box 1: contosostorage

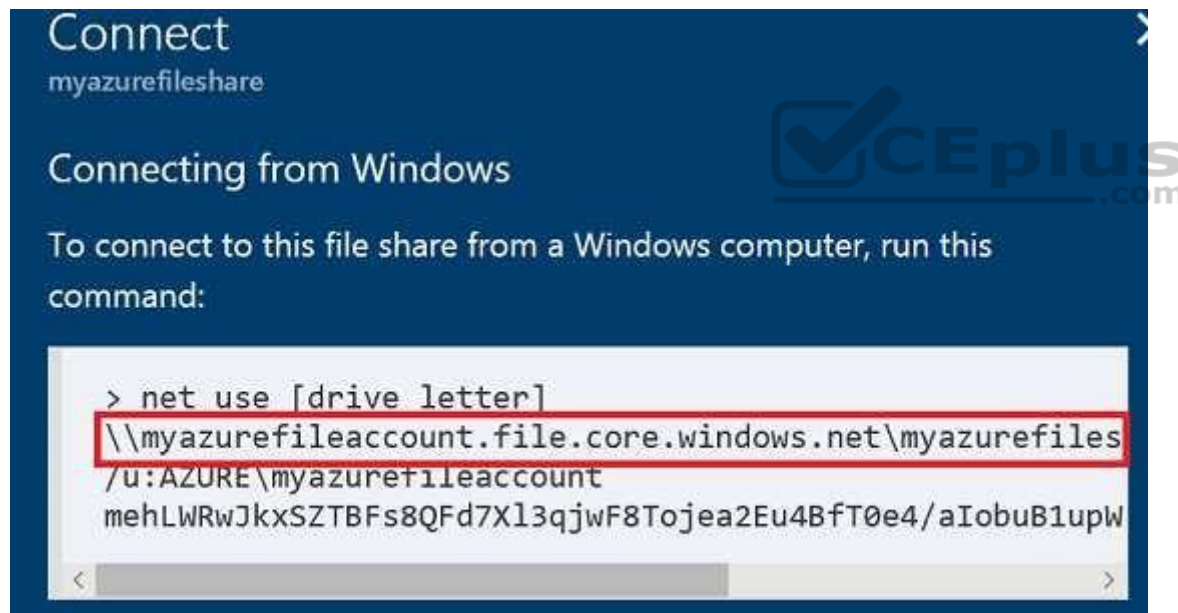
The name of account

Box 2: file.core.windows.net

Box 3: data

The name of the file share is data.

Example:



References: <https://docs.microsoft.com/en-us/azure/storage/files/storage-how-to-use-files-windows>

QUESTION 12

You have the Azure virtual machines shown in the following table.

<https://vceplus.com/>

Name	Azure Region
VM1	West Europe
VM2	West Europe
VM3	North Europe
VM4	North Europe

You have a Recovery Services vault that protects VM1 and VM2.

You need to protect VM3 and VM4 by using Recovery Services.

What should you do first?

- A. Create a new backup policy.
- B. Configure the extensions for VM3 and VM4.
- C. Create a storage account.
- D. Create a new Recovery Services vault.

Correct Answer: D

Section: [none]

Explanation



Explanation/Reference:

Explanation:

A Recovery Services vault is a storage entity in Azure that houses data. The data is typically copies of data, or configuration information for virtual machines (VMs), workloads, servers, or workstations. You can use Recovery Services vaults to hold backup data for various Azure services

References: <https://docs.microsoft.com/en-us/azure/site-recovery/azure-to-azure-tutorial-enable-replication>

QUESTION 13

You have an Azure subscription named Subscription1.

You have 5 TB of data that you need to transfer to Subscription1.

You plan to use an Azure Import/Export job.

What can you use as the destination of the imported data?

- A. Azure Data Lake Store

- B. a virtual machine
- C. the Azure File Sync Storage Sync Service
- D. Azure Blob storage

Correct Answer: D

Section: [none]

Explanation

Explanation/Reference:

Explanation:

Azure Import/Export service is used to securely import large amounts of data to Azure Blob storage and Azure Files by shipping disk drives to an Azure datacenter.

The maximum size of an Azure Files Resource of a file share is 5 TB.

Reference:

<https://docs.microsoft.com/en-us/azure/storage/common/storage-import-export-service>



Testlet 2

Case study

This is a case study. **Case studies are not timed separately. You can use as much exam time as you would like to complete each case.** However, there may be additional case studies and sections on this exam. You must manage your time to ensure that you are able to complete all questions included on this exam in the time provided.

To answer the questions included in a case study, you will need to reference information that is provided in the case study. Case studies might contain exhibits and other resources that provide more information about the scenario that is described in the case study. Each question is independent of the other questions in this case study.

At the end of this case study, a review screen will appear. This screen allows you to review your answers and to make changes before you move to the next section of the exam. After you begin a new section, you cannot return to this section.

To start the case study

To display the first question in this case study, click the **Next** button. Use the buttons in the left pane to explore the content of the case study before you answer the questions. Clicking these buttons displays information such as business requirements, existing environment, and problem statements. If the case study has an **All Information** tab, note that the information displayed is identical to the information displayed on the subsequent tabs. When you are ready to answer a question, click the **Question** button to return to the question. **Overview**

Contoso, Ltd. is a manufacturing company that has offices worldwide. Contoso works with partner organizations to bring products to market.

Contoso products are manufactured by using blueprint files that the company authors and maintains.

Existing Environment

Currently, Contoso uses multiple types of servers for business operations, including the following:

- File servers
- Domain controllers
- Microsoft SQL Server servers

Your network contains an Active Directory forest named contoso.com. All servers and client computers are joined to Active Directory.

You have a public-facing application named App1. App1 is comprised of the following three tiers:

- A SQL database
- A web front end
- A processing middle tier

Each tier is comprised of five virtual machines. Users access the web front end by using HTTPS only.

<https://vceplus.com/>

Requirements

Planned Changes

Contoso plans to implement the following changes to the infrastructure:

- Move all the tiers of App1 to Azure.
- Move the existing product blueprint files to Azure Blob storage.
- Create a hybrid directory to support an upcoming Microsoft Office 365 migration project.

Technical Requirements

Contoso must meet the following technical requirements:

- Move all the virtual machines for App1 to Azure.
 - Minimize the number of open ports between the App1 tiers.
 - Ensure that all the virtual machines for App1 are protected by backups.
 - Copy the blueprint files to Azure over the Internet.
 - Ensure that the blueprint files are stored in the archive storage tier.
 - Ensure that partner access to the blueprint files is secured and temporary.
 - Prevent user passwords or hashes of passwords from being stored in Azure.
 - Use unmanaged standard storage for the hard disks of the virtual machines.
 - Ensure that when users join devices to Azure Active Directory (Azure AD), the users use a mobile phone to verify their identity
- Minimize administrative effort whenever possible

User Requirements

Contoso identifies the following requirements for users:

- Ensure that only users who are part of a group named Pilot can join devices to Azure AD.
- Designate a new user named Admin1 as the service admin for the Azure subscription.
- Admin1 must receive email alerts regarding service outages.
- Ensure that a new user named User3 can create network objects for the Azure subscription.

QUESTION 1

You need to move the blueprint files to Azure.

What should you do?

- A. Use Azure Storage Explorer to copy the files.
- B. Use the Azure Import/Export service.

- C. Generate a shared access signature (SAS). Map a drive, and then copy the files by using File Explorer.
- D. Generate an access key. Map a drive, and then copy the files by using File Explorer.

Correct Answer: A

Section: [none]

Explanation

Explanation/Reference:

Explanation:

Azure Storage Explorer is a free tool from Microsoft that allows you to work with Azure Storage data on Windows, macOS, and Linux. You can use it to upload and download data from Azure blob storage.

Scenario:

Planned Changes include: move the existing product blueprint files to Azure Blob storage.

Technical Requirements include: Copy the blueprint files to Azure over the Internet.

References: <https://docs.microsoft.com/en-us/azure/machine-learning/team-data-science-process/move-data-to-azure-blob-using-azure-storage-explorer>



Question Set 1

QUESTION 1

SIMULATION

Please wait while the virtual machine loads. Once loaded, you may proceed to the lab section. This may take a few minutes, and the wait time will not be deducted from your overall test time.

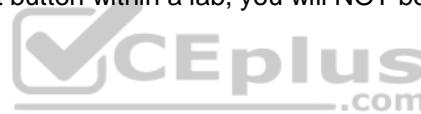
When the Next button is available, click it to access the lab section. In this section, you will perform a set of tasks in a live environment. While most functionality will be available to you as it would be in a live environment, some functionality (e.g. copy and paste, ability to navigate to external websites) will not be possible by design.

Scoring is based on the outcome of performing the tasks stated in the lab. In other words, it doesn't matter how you accomplish the task, if you successfully perform it, you will earn credit for that task.

Labs are not timed separately, and this exam may have more than one lab that you must complete. You can use as much time as you would like to complete each lab. But, you should manage your time appropriately to ensure that you are able to complete the lab(s) and all other sections of the exam in the time provided.

Please note that once you submit your work by clicking the Next button within a lab, you will NOT be able to return to the lab.

You may now click next to proceed to the lab.





Microsoft Azure

Search resources, services, and docs

+

Create a resource

Home

Dashboard

All services

FAVORITES

All resources

Resource groups

App Services

Function App

SQL databases

Azure Cosmos DB

Virtual machines

Load balancers

Storage accounts

Virtual networks

Azure Active Directory

Monitor

Advisor

Security Center

Cost Management + B...

Help + support

Azure services

See all (100+) >

Create a resource >

Virtual machines

App Services

Storage accounts

SQL databases

Azure Database for PostgreSQL servers

Azure Cosmos DB

Kubernetes services

Fun...

Microsoft Learn

Learn Azure with free online training from Microsoft

Azure Monitor

Monitor your apps and infrastructure

Security Center

Secure your apps and infrastructure

Cost Management

Analyze and optimi cloud spend for fr

Recent resources

See all your recent resources >

See all your resources >

No recent resources to display

As you visit resources, they'll be listed in Recently used resources for quick and easy access.

Create a resource

<https://vceplus.com/>

[www.vceplus.com](https://vceplus.com/) - Free Questions & Answers - Online Courses - Convert VCE to PDF - VCEplus.com

You need to deploy an Azure virtual machine named VM1004a based on an Ubuntu Server image, and then configure VM1004a to meet the following requirements:

- The virtual machine must contain data disks that can store at least 15 TB of data.
 - The data disks must be able to provide at least 2,000 IOPS. ▪
- Storage costs must be minimized.

What should you do from the Azure portal?



<https://vceplus.com/>



Correct Answer: See solution below.

Section: [none]

Explanation

Explanation/Reference:

Explanation:

Step 1: Open the Azure portal.

Step 2: On the left menu, select All resources. You can sort the resources by Type to easily find your images.

Step 3: Select the image you want to use from the list. The image Overview page opens.

Step 4: Select Create VM from the menu.

Step 5: Enter the virtual machine information.

Select VM1004a as the name for the first Virtual machine.

The user name and password entered here will be used to log in to the virtual machine. When complete, select OK. You can create the new VM in an existing resource group, or choose Create new to create a new resource group to store the VM.

Step 6: Select a size for the VM. To see more sizes, select View all or change the Supported disk type filter.

To meet the requirements select Standard SSD E70.

<https://vceplus.com/>

Standard SSD E70: Up to 16 TB, IOPS up to 4000, \$1,228.80/month

Standard SSD Managed Disks, a low-cost SSD offering, are optimized for test and entry-level production workloads requiring consistent latency.

Step 7: Under Settings, make changes as necessary and select OK.

Step 8: On the summary page, you should see your image name listed as a Private image. Select Ok to start the virtual machine deployment.

Reference: <https://docs.microsoft.com/en-us/azure/virtual-machines/windows/create-vm-generalized-managed>

QUESTION 2

You have an Azure subscription that contains a virtual machine named VM1. VM1 hosts a line-of-business application that is available 24 hours a day. VM1 has one network interface and one managed disk. VM1 uses the D4s v3 size.

You plan to make the following changes to VM1:

- Change the size to D8s v3.
- Add a 500-GB managed disk.
- Add the Puppet Agent extension.
- Attach an additional network interface.

Which change will cause downtime for VM1?

- A. Add the Puppet Agent extension.
- B. Change the size to D8s v3.
- C. Add a 500-GB managed disk.
- D. Attach an additional network interface.

Correct Answer: B

Section: [none]

Explanation

Explanation/Reference:

Explanation:

While resizing the VM it must be in a stopped state.

References: <https://azure.microsoft.com/en-us/blog/resize-virtual-machines/>

QUESTION 3



You have an Azure virtual machine named VM1 that you use for testing. VM1 is protected by Azure Backup.

You delete VM1.

You need to remove the backup data stored for VM1.

What should you do first?

- A. Delete the Recovery Services vault.
- B. Delete the storage account.
- C. Stop the backup
- D. Modify the backup policy.

Correct Answer: D

Section: [none]

Explanation

Explanation/Reference:

Explanation:

Azure Backup provides backup for virtual machines — created through both the classic deployment model and the Azure Resource Manager deployment model — by using custom-defined backup policies in a Recovery Services vault.

With the release of backup policy management, customers can manage backup policies and model them to meet their changing requirements from a single window. Customers can edit a policy, associate more virtual machines to a policy, and delete unnecessary policies to meet their compliance requirements.

Incorrect Answers:

B: You can't delete a Recovery Services vault if it is registered to a server and holds backup data. If you try to delete a vault, but can't, the vault is still configured to receive backup data.

References: <https://azure.microsoft.com/en-in/updates/azure-vm-backup-policy-management/>

QUESTION 4

You have an Azure subscription named Subscription1.

You deploy a Linux virtual machine named VM1 to Subscription1.

You need to monitor the metrics and the logs of VM1.

What should you use?

- A. the AzurePerformanceDiagnostics extension
- B. Azure HDInsight
- C. Linux Diagnostic Extension (LAD) 3.0
- D. Azure Analysis Services

Correct Answer: A

Section: [none]

Explanation

Explanation/Reference:

Explanation:

You can use extensions to configure diagnostics on your VMs to collect additional metric data.

The basic host metrics are available, but to see more granular and VM-specific metrics, you need to install the Azure diagnostics extension on the VM. The Azure diagnostics extension allows additional monitoring and diagnostics data to be retrieved from the VM.

References: <https://docs.microsoft.com/en-us/azure/virtual-machines/linux/tutorial-monitoring>

QUESTION 5

You have an Azure subscription that contains 100 virtual machines.

You regularly create and delete virtual machines.

You need to identify unattached disks that can be deleted.

What should you do?

- A. From Microsoft Azure Storage Explorer, view the Account Management properties.
- B. From the Azure portal, configure the Advisor recommendations.
- C. From Azure Cost Management, view Advisor Recommendations.
- D. From Azure Cost Management, view Cost Analysis.

Correct Answer: A

Section: [none]

Explanation

Explanation/Reference:

Explanation:

You can find unused disks in the Azure Storage Explorer console. Once you drill down to the Blob containers under a storage account, you can see the lease state of the residing VHD (the lease state determines if the VHD is being used by any resource) and the VM to which it is leased out. If you find that the lease state and

<https://vceplus.com/>

the VM fields are blank, it means that the VHD in question is unused. The screenshot below shows two active VHDs being used by VMs as data and OS disks. The name of the VM and lease state are shown in the "VM Name" and "Lease State" columns, respectively.

Reference: <https://cloud.netapp.com/blog/reduce-azure-storage-costs>

QUESTION 6

You have an Azure virtual machine named VM1.

Azure collects events from VM1.

You are creating an alert rule in Azure Monitor to notify an administrator when an error is logged in the System event log of VM1.

You need to specify which resource type to monitor.

What should you specify?

- A. metric alert
- B. Azure Log Analytics workspace
- C. virtual machine
- D. virtual machine extension



Correct Answer: D

Section: [none]

Explanation

Explanation/Reference:

Explanation:

Azure Monitor can collect data directly from your Azure virtual machines into a Log Analytics workspace for detailed analysis and correlation. Installing the Log Analytics VM extension for Windows and Linux allows Azure Monitor to collect data from your Azure VMs.

Incorrect Answers:

B: Azure Log Analytics workspace is used for on-premises computers monitored by System Center Operations Manager.

Reference: <https://docs.microsoft.com/en-us/azure/azure-monitor/learn/quick-collect-azurevm>

QUESTION 7

DRAG DROP

You have an availability set named AS1 that contains three virtual machines named VM1, VM2, and VM3.

<https://vceplus.com/>

You attempt to reconfigure VM1 to use a larger size. The operation fails and you receive an allocation failure message.

You need to ensure that the resize operation succeeds.

Which three actions should you perform in sequence? To answer, move the appropriate actions from the list of actions to the answer area and arrange them in the correct order.

Select and Place:

Actions	Answer Area
Start VM2 and VM3.	
Stop VM2 and VM3.	
Start VM1.	
Stop VM1, VM2 and VM3.	
Resize VM1.	
Start VM1, VM2, and VM3.	

Correct Answer:

Actions	Answer Area
Start VM2 and VM3.	Stop VM1, VM2 and VM3.
Stop VM2 and VM3.	Resize VM1.
Start VM1.	Start VM1, VM2, and VM3.

Section: [none]

Explanation

Explanation/Reference:

Explanation:

Step 1: Stop VM1, VM, and VM3.

If the VM you wish to resize is part of an availability set, then you must stop all VMs in the availability set before changing the size of any VM in the availability set. The reason all VMs in the availability set must be stopped before performing the resize operation to a size that requires different hardware is that all running VMs in the availability set must be using the same physical hardware cluster. Therefore, if a change of physical hardware cluster is required to change the VM size then all VMs must be first stopped and then restarted one-by-one to a different physical hardware clusters.

Step 2: Resize VM1.

Step 3: Start VM1, VM2, and VM3.

References:

<https://azure.microsoft.com/es-es/blog/resize-virtual-machines/>

<https://vceplus.com/>

QUESTION 8

You plan to back up an Azure virtual machine named VM1.

You discover that the Backup Pre-Check status displays a status of Warning.

What is a possible cause of the Warning status?

- A. VM1 is stopped.
- B. VM1 does not have the latest version of WaAppAgent.exe installed.
- C. VM1 has an unmanaged disk.
- D. A Recovery Services vault is unavailable.

Correct Answer: B

Section: [none]

Explanation

Explanation/Reference:

Explanation:

The Warning state indicates one or more issues in VM's configuration that might lead to backup failures and provides recommended steps to ensure successful backups. Not having the latest VM Agent installed, for example, can cause backups to fail intermittently and falls in this class of issues.

References: <https://azure.microsoft.com/en-us/blog/azure-vm-backup-pre-checks/>

QUESTION 9

You have an Azure subscription named Subscription1 that is used by several departments at your company. Subscription1 contains the resources in the following table.

Name	Type
storage1	Storage account
RG1	Resource group
Container1	Blob container
Share1	File share

Another administrator deploys a virtual machine named VM1 and an Azure Storage account named Storage2 by using a single Azure Resource Manager template.

You need to view the template used for the deployment.

From which blade can you view the template that was used for the deployment?

<https://vceplus.com/>

- A. Container1
- B. RG1
- C. VM1
- D. Storage2

Correct Answer: B

Section: [none]

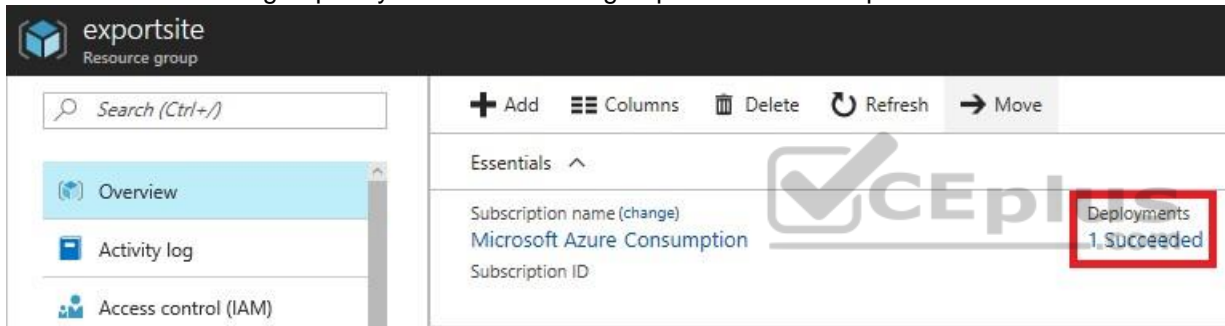
Explanation

Explanation/Reference:

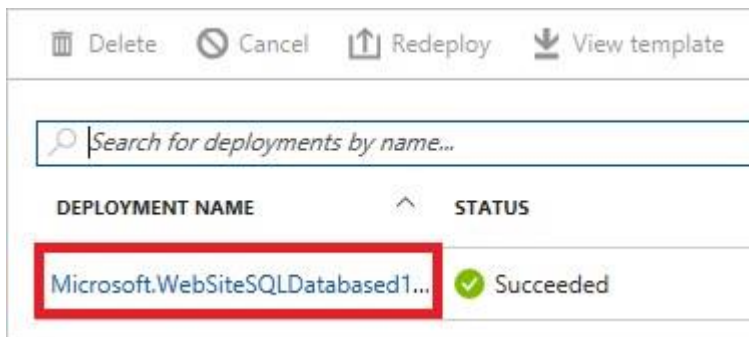
Explanation:

View template from deployment history

1. Go to the resource group for your new resource group. Notice that the portal shows the result of the last deployment. Select this link.

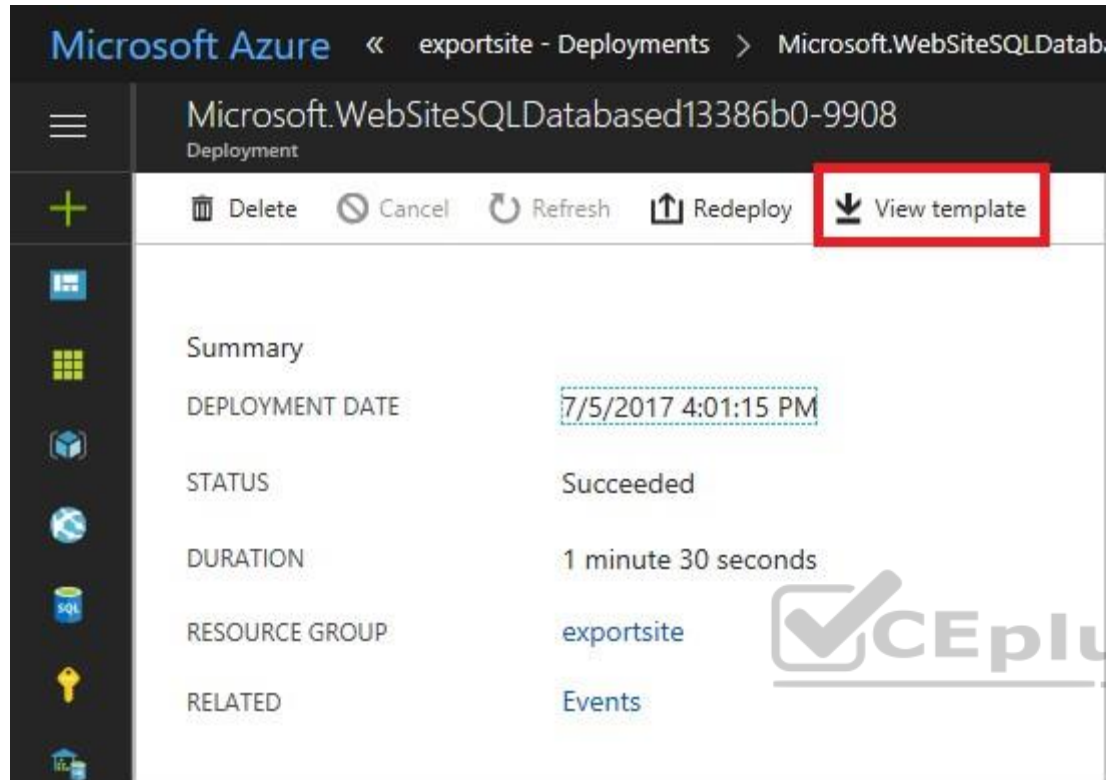


2. You see a history of deployments for the group. In your case, the portal probably lists only one deployment. Select this deployment.



3. The portal displays a summary of the deployment. The summary includes the status of the deployment and its operations and the values that you provided for parameters. To see the template that you used for the deployment, select View template.

<https://vceplus.com/>



References: <https://docs.microsoft.com/en-us/azure/azure-resource-manager/resource-manager-export-template>

QUESTION 10

Note: This question is part of a series of questions that present the same scenario. Each question in the series contains a unique solution that might meet the stated goals. Some question sets might have more than one correct solution, while others might not have a correct solution.

After you answer a question in this section, you will NOT be able to return to it. As a result, these questions will not appear in the review screen.

You have an Azure subscription that contains the resources shown in the following table.

Name	Type	Region
RG1	Resource group	West US
RG2	Resource group	East Asia
storage1	Storage account	West US
storage2	Storage account	East Asia
VM1	Virtual machine	West US
VNET1	Virtual machine	West US
VNET2	Virtual machine	East Asia

VM1 connects to VNET1.

You need to connect VM1 to VNET2.

Solution: You create a new network interface, and then you add the network interface to VM1.

Does this meet the goal?

- A. Yes
- B. No

Correct Answer: B

Section: [none]

Explanation

Explanation/Reference:

Explanation:

Instead you should delete VM1. You recreate VM1, and then you add the network interface for VM1.

Note: When you create an Azure virtual machine (VM), you must create a virtual network (VNet) or use an existing VNet. You can change the subnet a VM is connected to after it's created, but you cannot change the VNet.

References: <https://docs.microsoft.com/en-us/azure/virtual-machines/windows/network-overview>

QUESTION 11

Note: This question is part of a series of questions that present the same scenario. Each question in the series contains a unique solution that might meet the stated goals. Some question sets might have more than one correct solution, while others might not have a correct solution.

<https://vceplus.com/>

After you answer a question in this section, you will NOT be able to return to it. As a result, these questions will not appear in the review screen.

You have an Azure subscription that contains the resources shown in the following table.

Name	Type	Region
RG1	Resource group	West US
RG2	Resource group	East Asia
storage1	Storage account	West US
storage2	Storage account	East Asia
VM1	Virtual machine	West US
VNET1	Virtual machine	West US
VNET2	Virtual machine	East Asia

VM1 connects to VNET1.

You need to connect VM1 to VNET2.

Solution: You turn off VM1, and then you add a new network interface to VM1.

Does this meet the goal?

- A. Yes
- B. No

Correct Answer: B

Section: [none]

Explanation

Explanation/Reference:

Explanation:

Instead you should delete VM1. You recreate VM1, and then you add the network interface for VM1.

Note: When you create an Azure virtual machine (VM), you must create a virtual network (VNet) or use an existing VNet. You can change the subnet a VM is connected to after it's created, but you cannot change the VNet.

Reference:

<https://docs.microsoft.com/en-us/azure/virtual-machines/windows/network-overview>

<https://vceplus.com/>

QUESTION 12

Note: This question is part of a series of questions that present the same scenario. Each question in the series contains a unique solution that might meet the stated goals. Some question sets might have more than one correct solution, while others might not have a correct solution.

After you answer a question in this section, you will NOT be able to return to it. As a result, these questions will not appear in the review screen.

You have an Azure subscription that contains the resources shown in the following table.

Name	Type	Region
RG1	Resource group	West US
RG2	Resource group	East Asia
storage1	Storage account	West US
storage2	Storage account	East Asia
VM1	Virtual machine	West US
VNET1	Virtual machine	West US
VNET2	Virtual machine	East Asia

VM1 connects to VNET1.

You need to connect VM1 to VNET2.

Solution: You delete VM1. You recreate VM1, and then you create a new network interface for VM1.

Does this meet the goal?

- A. Yes
- B. No

Correct Answer: A

Section: [none]

Explanation

Explanation/Reference:

Explanation:

Instead you should delete VM1. You recreate VM1, and then you add the network interface for VM1.

Note: When you create an Azure virtual machine (VM), you must create a virtual network (VNet) or use an existing VNet. You can change the subnet a VM is connected to after it's created, but you cannot change the VNet.

Reference:

<https://docs.microsoft.com/en-us/azure/virtual-machines/windows/network-overview>

QUESTION 13

Note: This question is part of a series of questions that present the same scenario. Each question in the series contains a unique solution that might meet the stated goals. Some question sets might have more than one correct solution, while others might not have a correct solution.

After you answer a question in this section, you will NOT be able to return to it. As a result, these questions will not appear in the review screen.

You have an Azure virtual machine named VM1. VM1 was deployed by using a custom Azure Resource Manager template named ARM1.json.

You receive a notification that VM1 will be affected by maintenance.

You need to move VM1 to a different host immediately.

Solution: From the Overview blade, you move the virtual machine to a different subscription.

Does this meet the goal?

- A. Yes
- B. No

Correct Answer: B

Section: [none]

Explanation

Explanation/Reference:

Explanation:

You would need to redeploy the VM.

References: <https://docs.microsoft.com/en-us/azure/virtual-machines/windows/redeploy-to-new-node>

QUESTION 14

Note: This question is part of a series of questions that present the same scenario. Each question in the series contains a unique solution that might meet the stated goals. Some question sets might have more than one correct solution, while others might not have a correct solution.

After you answer a question in this section, you will NOT be able to return to it. As a result, these questions will not appear in the review screen.

<https://vceplus.com/>

You have an Azure virtual machine named VM1. VM1 was deployed by using a custom Azure Resource Manager template named ARM1.json.

You receive a notification that VM1 will be affected by maintenance.

You need to move VM1 to a different host immediately.

Solution: From the Redeploy blade, you click **Redeploy**.

Does this meet the goal?

A. Yes



B. No

Correct Answer: A

Section: [none]

Explanation

Explanation/Reference:

Explanation:

When you redeploy a VM, it moves the VM to a new node within the Azure infrastructure and then powers it back on, retaining all your configuration options and associated resources.

References: <https://docs.microsoft.com/en-us/azure/virtual-machines/windows/redeploy-to-new-node>

QUESTION 15

Note: This question is part of a series of questions that present the same scenario. Each question in the series contains a unique solution that might meet the stated goals. Some question sets might have more than one correct solution, while others might not have a correct solution.

After you answer a question in this section, you will NOT be able to return to it. As a result, these questions will not appear in the review screen.

<https://vceplus.com/>

You have an Azure virtual machine named VM1. VM1 was deployed by using a custom Azure Resource Manager template named ARM1.json.

You receive a notification that VM1 will be affected by maintenance.

You need to move VM1 to a different host immediately.

Solution: From the Update management blade, you click **Enable**.

Does this meet the goal?

- A. Yes
- B. No

Correct Answer: B

Section: [none]

Explanation

Explanation/Reference:

Explanation:

You would need to redeploy the VM.

References: <https://docs.microsoft.com/en-us/azure/virtual-machines/windows/redeploy-to-new-node>

QUESTION 16

You download an Azure Resource Manager template based on an existing virtual machine. The template will be used to deploy 100 virtual machines.

You need to modify the template to reference an administrative password. You must prevent the password from being stored in plain text.

What should you create to store the password?

- A. an Azure Key Vault and an access policy
- B. a Recovery Services vault and a backup policy
- C. Azure Active Directory (AD) Identity Protection and an Azure policy
- D. an Azure Storage account and an access policy

Correct Answer: A

Section: [none]

Explanation

Explanation/Reference:

<https://vceplus.com/>

Explanation:

You can use a template that allows you to deploy a simple Windows VM by retrieving the password that is stored in a Key Vault. Therefore, the password is never put in plain text in the template parameter file.

References: <https://azure.microsoft.com/en-us/resources/templates/101-vm-secure-password/>

QUESTION 17

SIMULATION

Please wait while the virtual machine loads. Once loaded, you may proceed to the lab section. This may take a few minutes, and the wait time will not be deducted from your overall test time.

When the Next button is available, click it to access the lab section. In this section, you will perform a set of tasks in a live environment. While most functionality will be available to you as it would be in a live environment, some functionality (e.g, copy and paste, ability to navigate to external websites) will not be possible by design.

Scoring is based on the outcome of performing the tasks stated in the lab. In other words, it doesn't matter how you accomplish the task, if you successfully perform it, you will earn credit for that task.

Labs are not timed separately, and this exam may have more than one lab that you must complete. You can use as much time as you would like to complete each lab. But, you should manage your time appropriately to ensure that you are able to complete the lab(s) and all other sections of the exam in the time provided.

Please note that once you submit your work by clicking the Next button within a lab, you will NOT be able to return to the lab.

You may now click next to proceed to the lab.

Use the following login credentials as needed:

Azure Username: XXXXXXXX

Azure Password: XXXXXXXX

The following information is for technical support purposes only:

Lab Instance: 9172796



You plan to back up all the Azure virtual machines in your Azure subscription at 02:00 Coordinated Universal Time (UTC) daily.

You need to prepare the Azure environment to ensure that any new virtual machines can be configured quickly for backup. The solution must ensure that all the daily backups performed at 02:00 UTC are stored for only 90 days.

What should you do from your Recovery Services vault on the Azure portal?

Correct Answer: See solution below.

Section: [none]

Explanation

Explanation/Reference:

Explanation:

Task A: Create a Recovery Services vault (if a vault already exists skip this task, go to Task B below)

A1. From Azure Portal, On the Hub menu, click All services and in the list of resources, type Recovery Services and click Recovery Services vaults.

<https://vceplus.com/>

If there are recovery services vaults in the subscription, the vaults are listed.

A2. On the Recovery Services vaults menu, click Add.

A3. The Recovery Services vault blade opens, prompting you to provide a Name, Subscription, Resource group, and Location

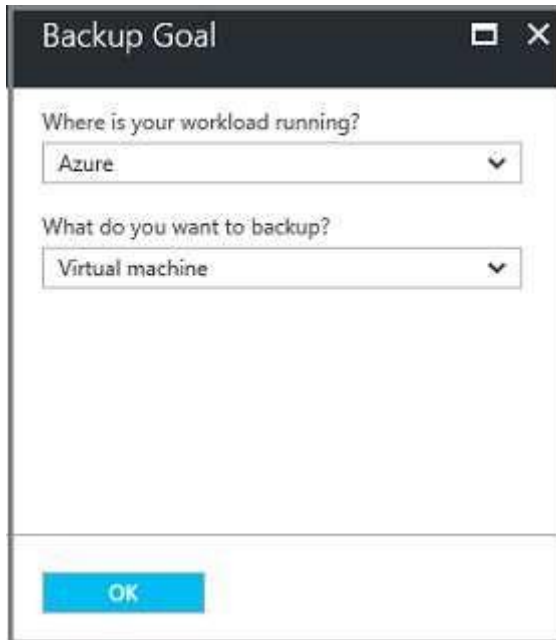
Task B.

B1. On the Recovery Services vault blade (for the vault you just created), in the Getting Started section, click Backup, then on the Getting Started with Backup blade, select Backup goal.

The Backup Goal blade opens. If the Recovery Services vault has been previously configured, then the Backup Goal blades opens when you click Backup on the Recovery Services vault blade.

B2. From the Where is your workload running? drop-down menu, select Azure.

B3. From the What do you want to backup? menu, select Virtual Machine, and click OK.

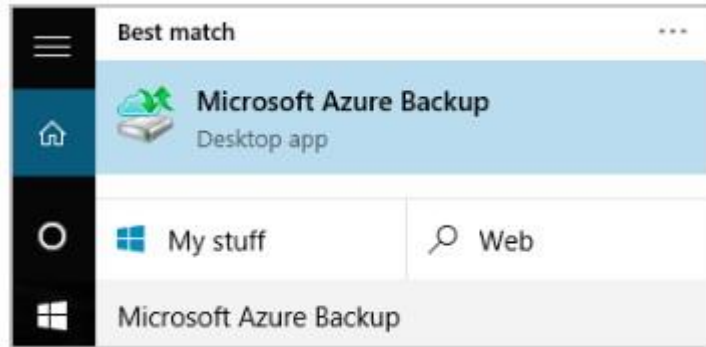


The screenshot shows a dialog box titled "Backup Goal" with a dark header bar containing a maximize icon and a close button (X). The dialog has two dropdown menus. The first dropdown is labeled "Where is your workload running?" and has "Azure" selected. The second dropdown is labeled "What do you want to backup?" and has "Virtual machine" selected. At the bottom of the dialog is a blue button labeled "OK".

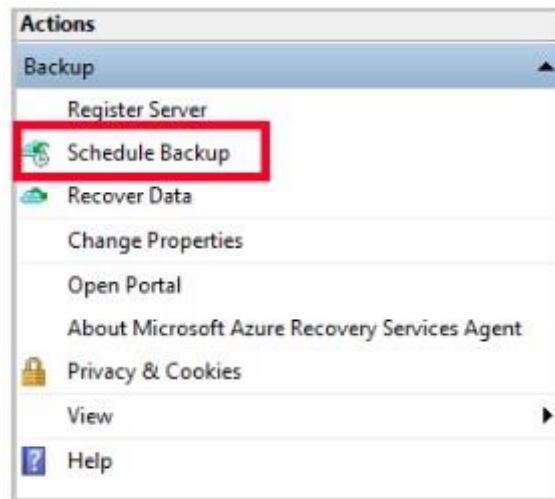
B4. Finish the Wizard.

Task C. create a backup schedule

C1. Open the Microsoft Azure Backup agent. You can find it by searching your machine for Microsoft Azure Backup.



C2. In the Backup agent's Actions pane, click Schedule Backup to launch the Schedule Backup Wizard.



C3. On the Getting started page of the Schedule Backup Wizard, click Next.

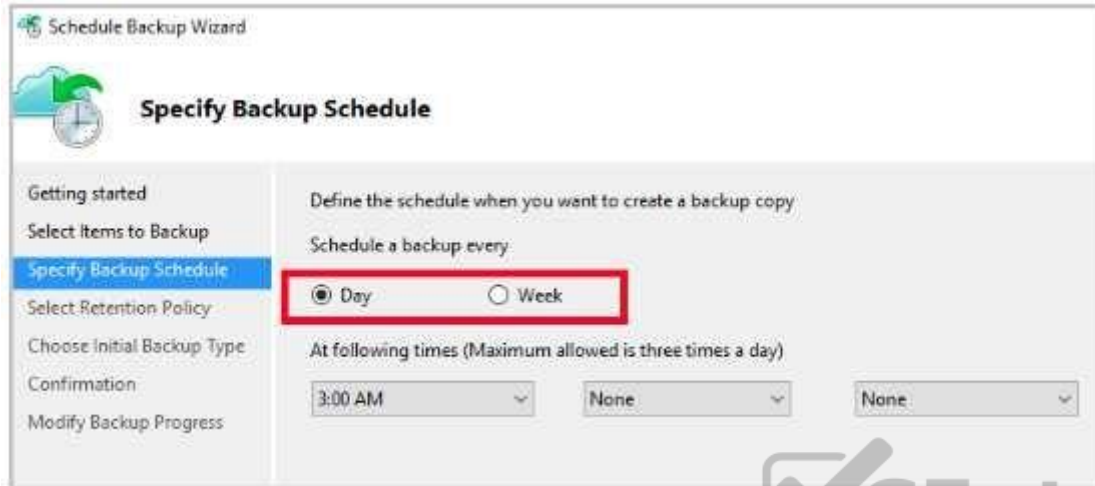
C4. On the Select Items to Backup page, click Add Items.

The Select Items dialog opens.

C5. Select Blob Storage you want to protect, and then click OK.

C6. In the Select Items to Backup page, click Next.

On the Specify Backup Schedule page, specify
Schedule a backup every: day
At the following times: 2.00 AM



Schedule Backup Wizard

Specify Backup Schedule

Getting started
Select Items to Backup
Specify Backup Schedule
Select Retention Policy
Choose Initial Backup Type
Confirmation
Modify Backup Progress

Define the schedule when you want to create a backup copy

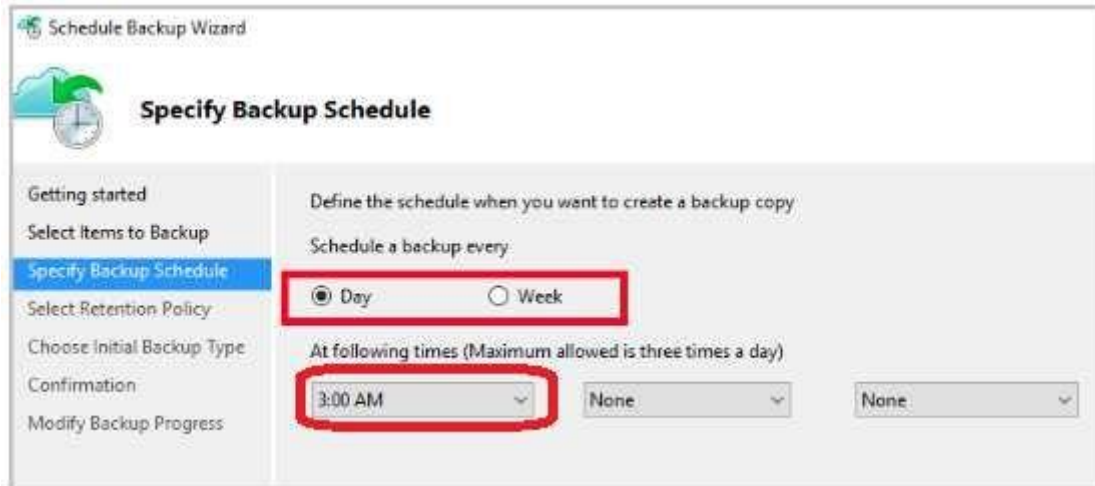
Schedule a backup every:

☒ Day ☐ Week

At following times (Maximum allowed is three times a day)

3:00 AM None None

C7. On the Select Retention Policy page, set it to 90 days, and click Next.



Schedule Backup Wizard

Specify Backup Schedule

Getting started
Select Items to Backup
Specify Backup Schedule
Select Retention Policy
Choose Initial Backup Type
Confirmation
Modify Backup Progress

Define the schedule when you want to create a backup copy

Schedule a backup every:

☒ Day ☐ Week

At following times (Maximum allowed is three times a day)

3:00 AM None None

C8. Finish the Wizard.

References:

<https://docs.microsoft.com/en-us/azure/backup/backup-configure-vault> **QUESTION 18**

You plan to automate the deployment of a virtual machine scale set that uses the Windows Server 2016 Datacenter image.

You need to ensure that when the scale set virtual machines are provisioned, they have web server components installed.

Which two actions should you perform? Each correct answer presents part of the solution.

NOTE: Each correct selection is worth one point.

- A. Modify the `extensionProfile` section of the Azure Resource Manager template.
- B. Create an automation account.
- C. Upload a configuration script.
- D. Create a new virtual machine scale set in the Azure portal.
- E. Create an Azure policy.

Correct Answer: AD

Section: [none]

Explanation

Explanation/Reference:

Explanation:

Virtual Machine Scale Sets can be used with the Azure Desired State Configuration (DSC) extension handler. Virtual machine scale sets provide a way to deploy and manage large numbers of virtual machines, and can elastically scale in and out in response to load. DSC is used to configure the VMs as they come online so they are running the production software.

References:

<https://docs.microsoft.com/en-us/azure/virtual-machine-scale-sets/virtual-machine-scale-sets-dsc>

Question Set 1

QUESTION 1

You have five Azure virtual machines that run Windows Server 2016. The virtual machines are configured as web servers.

You have an Azure load balancer named LB1 that provides load balancing services for the virtual machines.

You need to ensure that visitors are serviced by the same web server for each request.

What should you configure?

- A. Idle Time-out (minutes) to **20**

<https://vceplus.com/>

- B. Floating IP (direct server return) to **Disabled**
- C. Floating IP (direct server return) to **Enabled**
- D. Session persistence to **Client IP and protocol**
- E. a health probe

Correct Answer: D

Section: [none]

Explanation

Explanation/Reference:

Explanation:

With Sticky Sessions when a client starts a session on one of your web servers, session stays on that specific server. To configure An Azure Load-Balancer For Sticky Sessions set Session persistence to Client IP.

On the following image you can see sticky session configuration:





stickysessionrule
demoLoadBalancer

Save Discard Delete

Name
stickysessionrule

IP Version
☒ IPv4 ☐ IPv6

Frontend IP address
40.118.100.121 (LoadBalancerFrontEnd)

Protocol
☒ TCP ☐ UDP

Port
80

Backend port
80

Backend pool
Web1 (1 virtual machine)

Health probe
Web-80 (HTTP:80)

Session persistence
Client IP

Idle timeout (minutes)
4

Floating IP (direct server return)
Disabled

Session persistence specifies that traffic from a client machine in the backend pool for the duration of the session. Requests from the same client IP address to the same machine. "Client IP and protocol" specifies that the client IP address and protocol combination will be handled by the same machine.

None
Client IP
Client IP and protocol

Reference: <https://cloudopszone.com/configure-azure-load-balancer-for-sticky-sessions/>

QUESTION 2

You have a public load balancer that balances ports 80 and 443 across three virtual machines.

You need to direct all the Remote Desktop Protocol (RDP) connections to VM3 only.

<https://vceplus.com/>

What should you configure?

- A. an inbound NAT rule
- B. a load balancing rule
- C. a new public load balancer for VM3
- D. a frontend IP configuration

Correct Answer: A

Section: [none]

Explanation

Explanation/Reference:

References:

<https://docs.microsoft.com/en-us/azure/load-balancer/tutorial-load-balancer-port-forwarding-portal>

<https://pixelrobots.co.uk/2017/08/azure-load-balancer-for-rds/>

QUESTION 3

You have an Azure subscription that contains three virtual networks named VNet1, VNet2, and VNet3. VNet2 contains a virtual appliance named VM2 that operates as a router.

You are configuring the virtual networks in a hub and spoke topology that uses VNet2 as the hub network.

You plan to configure peering between VNet1 and VNet2 and between VNet2 and VNet3.

You need to provide connectivity between VNet1 and VNet3 through VNet2.

Which two configurations should you perform? Each correct answer presents part of the solution.

- A. On the peering connections, use remote gateways.
- B. On the peering connections, allow forwarded traffic.
- C. On the peering connections, allow gateway transit.
- D. Create route tables and assign the table to subnets.
- E. Create a route filter.

Correct Answer: AC

Section: [none]

Explanation

Explanation/Reference:

<https://vceplus.com/>

Explanation:

Allow gateway transit: Check this box if you have a virtual network gateway attached to this virtual network and want to allow traffic from the peered virtual network to flow through the gateway.

The peered virtual network must have the Use remote gateways checkbox checked when setting up the peering from the other virtual network to this virtual network.

References: <https://docs.microsoft.com/en-us/azure/virtual-network/virtual-network-manage-peering#requirements-and-constraints>

QUESTION 4

You have an Azure subscription named Subscription1 that contains an Azure virtual network named VNet1. VNet1 connects to your on-premises network by using Azure ExpressRoute.

You need to connect VNet1 to the on-premises network by using a site-to-site VPN. The solution must minimize cost.

Which three actions should you perform? Each correct answer presents part of the solution.

NOTE: Each correct selection is worth one point.

- A. Create a gateway subnet.
- B. Create a VPN gateway that uses the Basic SKU.
- C. Create a connection.
- D. Create a local site VPN gateway.
- E. Create a VPN gateway that uses the VpnGw1 SKU.



Correct Answer: ABC

Section: [none]

Explanation

Explanation/Reference:

References: <https://docs.microsoft.com/en-us/azure/vpn-gateway/vpn-gateway-howto-site-to-site-resource-manager-portal>

QUESTION 5

Note: This question is part of a series of questions that present the same scenario. Each question in the series contains a unique solution that might meet the stated goals. Some question sets might have more than one correct solution, while others might not have a correct solution.

After you answer a question in this section, you will NOT be able to return to it. As a result, these questions will not appear in the review screen.

Your company registers a domain name of contoso.com.

You create an Azure DNS zone named contoso.com, and then you add an A record to the zone for a host named www that has an IP address of 131.107.1.10.

You discover that Internet hosts are unable to resolve www.contoso.com to the 131.107.1.10 IP address.

You need to resolve the name resolution issue.

Solution: You modify the name servers at the domain registrar.

Does this meet the goal?

- A. Yes
- B. No

Correct Answer: B

Section: [none]

Explanation

Explanation/Reference:

Explanation:

Modify the Name Server (NS) record.

References: <https://docs.microsoft.com/en-us/azure/dns/dns-delegate-domain-azure-dns>

QUESTION 6

Note: This question is part of a series of questions that present the same scenario. Each question in the series contains a unique solution that might meet the stated goals. Some question sets might have more than one correct solution, while others might not have a correct solution.

After you answer a question in this section, you will NOT be able to return to it. As a result, these questions will not appear in the review screen.

Your company registers a domain name of contoso.com.

You create an Azure DNS zone named contoso.com, and then you add an A record to the zone for a host named www that has an IP address of 131.107.1.10.

You discover that Internet hosts are unable to resolve www.contoso.com to the 131.107.1.10 IP address.

You need to resolve the name resolution issue.

Solution: You modify the SOA record in the contoso.com zone.

Does this meet the goal?

- A. Yes
- B. No

Correct Answer: B

Section: [none]

Explanation

Explanation/Reference:

Explanation:

Modify the NS record, not the SOA record.

Note: The SOA record stores information about the name of the server that supplied the data for the zone; the administrator of the zone; the current version of the data file; the number of seconds a secondary name server should wait before checking for updates; the number of seconds a secondary name server should wait before retrying a failed zone transfer; the maximum number of seconds that a secondary name server can use data before it must either be refreshed or expire; and a default number of seconds for the time-to-live file on resource records.

References:

<https://searchnetworking.techtarget.com/definition/start-of-authority-record>

QUESTION 7

Note: This question is part of a series of questions that present the same scenario. Each question in the series contains a unique solution that might meet the stated goals. Some question sets might have more than one correct solution, while others might not have a correct solution.

After you answer a question in this section, you will NOT be able to return to it. As a result, these questions will not appear in the review screen.

Your company registers a domain name of contoso.com.

You create an Azure DNS zone named contoso.com, and then you add an A record to the zone for a host named www that has an IP address of 131.107.1.10.

You discover that Internet hosts are unable to resolve www.contoso.com to the 131.107.1.10 IP address.

You need to resolve the name resolution issue.

Solution: You add an NS record to the contoso.com Azure DNS zone.

Does this meet the goal?

- A. Yes
- B. No

Correct Answer: A

<https://vceplus.com/>

Section: [none]

Explanation

Explanation/Reference:

Explanation:

Before you can delegate your DNS zone to Azure DNS, you need to know the name servers for your zone. The NS record set contains the names of the Azure DNS name servers assigned to the zone.

References: <https://docs.microsoft.com/en-us/azure/dns/dns-delegate-domain-azure-dns>

QUESTION 8

You are troubleshooting a performance issue for an Azure Application Gateway.

You need to compare the total requests to the failed requests during the past six hours.

What should you use?

- A. NSG flow logs in Azure Network Watcher
- B. Metrics in Application Gateway
- C. Connection monitor in Azure Network Watcher
- D. Diagnostics logs in Application Gateway



Correct Answer: B

Section: [none]

Explanation

Explanation/Reference:

References: <https://docs.microsoft.com/en-us/azure/application-gateway/application-gateway-diagnostics#metrics>

QUESTION 9

You have two subscriptions named Subscription1 and Subscription2. Each subscription is associated to a different Azure AD tenant.

Subscription1 contains a virtual network named VNet1. VNet1 contains an Azure virtual machine named VM1 and has an IP address space of 10.0.0.0/16.

Subscription2 contains a virtual network named VNet2. VNet2 contains an Azure virtual machine named VM2 and has an IP address space of 10.10.0.0/24.

You need to connect VNet1 to VNet2.

What should you do first?

<https://vceplus.com/>

- A. Move VM1 to Subscription2.
- B. Modify the IP address space of VNet2.
- C. Provision virtual network gateways.
- D. Move VNet1 to Subscription2.

Correct Answer: C

Section: [none]

Explanation

Explanation/Reference:

Explanation:

The virtual networks can be in the same or different regions, and from the same or different subscriptions. When connecting VNets from different subscriptions, the subscriptions do not need to be associated with the same Active Directory tenant.

Configuring a VNet-to-VNet connection is a good way to easily connect VNets. Connecting a virtual network to another virtual network using the VNet-to-VNet connection type (VNet2VNet) is similar to creating a Site-to-Site IPsec connection to an on-premises location. Both connectivity types use a VPN gateway to provide a secure tunnel using IPsec/IKE, and both function the same way when communicating.

The local network gateway for each VNet treats the other VNet as a local site. This lets you specify additional address space for the local network gateway in order to route traffic.

References: <https://docs.microsoft.com/en-us/azure/vpn-gateway/vpn-gateway-howto-vnet-vnet-resource-manager-portal>

QUESTION 10

DRAG DROP

You have an Azure subscription that contains two virtual networks named VNet1 and VNet2. Virtual machines connect to the virtual networks.

The virtual networks have the address spaces and the subnets configured as shown in the following table.

Virtual network	Address space	Subnet	Peering
VNet1	10.1.0.0/16	10.1.0.0/24 10.1.1.0/26	VNet2
VNet2	10.2.0.0/16	10.2.0.0/24	VNet1

You need to add the address space of 10.33.0.0/16 to VNet1. The solution must ensure that the hosts on VNet1 and VNet2 can communicate.

Which three actions should you perform in sequence? To answer, move the appropriate actions from the list of actions to the answer area and arrange them in the correct order.

<https://vceplus.com/>

Select and Place:

Actions

On the peering connection in VNet2,
allow gateway transit

On the peering connection in VNet1,
allow gateway transit

Remove VNet1.

Create a new virtual network named VNet1.

Remove peering between VNet1 and VNet2.

Add the 10.33.0.0/16 address space to VNet1.

Recreate peering between VNet1 and VNet2.

Answer Area

⬅	1		⬆
➡	2		⬇
	3		

Correct Answer:

Actions	Answer Area
On the peering connection in VNet2, allow gateway transit.	
On the peering connection in VNet1, allow gateway transit.	
Remove VNet1.	
Create a new virtual network named VNet1.	1 Remove peering between VNet1 and VNet2.
Remove peering between VNet1 and VNet2.	2 Add the 10.33.0.0/16 address space to VNet1.
Add the 10.33.0.0/16 address space to VNet1.	3 Recreate peering between VNet1 and VNet2.
Recreate peering between VNet1 and VNet2.	

Section: [none]

Explanation

Explanation/Reference:

Explanation:

Step 1: Remove peering between Vnet1 and VNet2.

You can't add address ranges to, or delete address ranges from a virtual network's address space once a virtual network is peered with another virtual network. To add or remove address ranges, delete the peering, add or remove the address ranges, then re-create the peering.

Step 2: Add the 10.44.0.0/16 address space to VNet1.

Step 3: Recreate peering between VNet1 and VNet2

References: <https://docs.microsoft.com/en-us/azure/virtual-network/virtual-network-manage-peering>

QUESTION 11

You have an Azure subscription that contains the resources in the following table.

<https://vceplus.com/>

Name	Type	Azure region	Resource group
VNet1	Virtual network	West US	RG2
VNet2	Virtual network	West US	RG1
VNet3	Virtual network	East US	RG1
NSG1	Network security group (NSG)	East US	RG2

To which subnets can you apply NSG1?

- A. the subnets on VNet2 only
- B. the subnets on VNet2 and VNet3 only
- C. the subnets on VNet1, VNet2, and VNet3
- D. the subnets on VNet1 only
- E. the subnets on VNet3 only

Correct Answer: E

Section: [none]

Explanation

Explanation/Reference:

Explanation:

All Azure resources are created in an Azure region and subscription. A resource can only be created in a virtual network that exists in the same region and subscription as the resource.

References: <https://docs.microsoft.com/en-us/azure/virtual-network/virtual-network-vnet-plan-design-arm>

QUESTION 12

You have five Azure virtual machines that run Windows Server 2016. The virtual machines are configured as web servers.

You have an Azure load balancer named LB1 that provides load balancing services for the virtual machines.

You need to ensure that visitors are serviced by the same web server for each request.

What should you configure?

- A. Protocol to **UDP**
- B. Session persistence to **None**

- C. Session persistence to **Client IP**
- D. Idle Time-out (minutes) to **20**

Correct Answer: C

Section: [none]

Explanation

Explanation/Reference:

Explanation:

You can set the sticky session in load balancer rules with setting the session persistence as the client IP.

References: <https://cloudopszone.com/configure-azure-load-balancer-for-sticky-sessions/>

QUESTION 13

You have the Azure virtual networks shown in the following table.

Name	Address space	Subnet	Resource group Azure region
VNet1	10.11.0.0/16	10.11.0.0/17	West US
VNet2	10.11.0.0/17	10.11.0.0/25	West US
VNet3	10.10.0.0/22	10.10.1.0/24	East US
VNet4	192.168.16.0/22	192.168.16.0/24	North Europe

To which virtual networks can you establish a peering connection from VNet1?

- A. VNet2 and VNet3 only
- B. VNet2 only
- C. VNet3 and VNet4 only
- D. VNet2, VNet3, and VNet4

Correct Answer: D

Section: [none]

Explanation

Explanation/Reference:

References:

<https://docs.microsoft.com/en-us/azure/virtual-network/tutorial-connect-virtual-networks-portal>

QUESTION 14

You have an Azure subscription that contains a policy-based virtual network gateway named GW1 and a virtual network named VNet1.

You need to ensure that you can configure a point-to-site connection from VNet1 to an on-premises computer.

Which two actions should you perform? Each correct answer presents part of the solution.

NOTE: Each correct selection is worth one point.

- A. Reset GW1.
- B. Create a route-based virtual network gateway.
- C. Delete GW1.
- D. Add a public IP address space to VNet1.
- E. Add a connection to GW1.
- F. Add a service endpoint to VNet1.

Correct Answer: BC

Section: [none]

Explanation

Explanation/Reference:

Explanation:

B: A VPN gateway is used when creating a VPN connection to your on-premises network.

Route-based VPN devices use any-to-any (wildcard) traffic selectors, and let routing/forwarding tables direct traffic to different IPsec tunnels. It is typically built on router platforms where each IPsec tunnel is modeled as a network interface or VTI (virtual tunnel interface).

C: Policy-based VPN devices use the combinations of prefixes from both networks to define how traffic is encrypted/decrypted through IPsec tunnels. It is typically built on firewall devices that perform packet filtering. IPsec tunnel encryption and decryption are added to the packet filtering and processing engine.

Incorrect Answers:

D: Point-to-Site connections do not require a VPN device or a public-facing IP address.

References: <https://docs.microsoft.com/en-us/azure/vpn-gateway/create-routebased-vpn-gateway-portal> <https://docs.microsoft.com/en-us/azure/vpn-gateway/vpn-gateway-connect-multiple-policybased-rm-ps>

QUESTION 15

Note: This question is part of a series of questions that present the same scenario. Each question in the series contains a unique solution that might meet the stated goals. Some question sets might have more than one correct solution, while others might not have a correct solution.

After you answer a question in this section, you will NOT be able to return to it. As a result, these questions will not appear in the review screen.

<https://vceplus.com/>

You have an Azure subscription that contains 10 virtual networks. The virtual networks are hosted in separate resource groups.

Another administrator plans to create several network security groups (NSGs) in the subscription.

You need to ensure that when an NSG is created, it automatically blocks TCP port 8080 between the virtual networks.

Solution: You create a resource lock, and then you assign the lock to the subscription.

Does this meet the goal?

- A. Yes
- B. No

Correct Answer: B

Section: [none]

Explanation

Explanation/Reference:

Explanation:

How can I freeze or lock my production/critical Azure resources from accidental deletion? There is a way to do this with both ASM and ARM resources using Azure resource lock.

Reference:

<https://blogs.msdn.microsoft.com/azureedu/2016/04/27/using-azure-resource-manager-policy-and-azure-lock-to-control-your-azure-resources/>

QUESTION 16

Note: This question is part of a series of questions that present the same scenario. Each question in the series contains a unique solution that might meet the stated goals. Some question sets might have more than one correct solution, while others might not have a correct solution.

After you answer a question in this section, you will NOT be able to return to it. As a result, these questions will not appear in the review screen.

You have an Azure subscription that contains 10 virtual networks. The virtual networks are hosted in separate resource groups.

Another administrator plans to create several network security groups (NSGs) in the subscription.

You need to ensure that when an NSG is created, it automatically blocks TCP port 8080 between the virtual networks.

Solution: You configure a custom policy definition, and then you assign the policy to the subscription.

Does this meet the goal?

- A. Yes

<https://vceplus.com/>

B. No

Correct Answer: A

Section: [none]

Explanation

Explanation/Reference:

Explanation:

Resource policy definition used by Azure Policy enables you to establish conventions for resources in your organization by describing when the policy is enforced and what effect to take. By defining conventions, you can control costs and more easily manage your resources.

Reference:

<https://docs.microsoft.com/en-us/azure/azure-policy/policy-definition>

QUESTION 17

Note: This question is part of a series of questions that present the same scenario. Each question in the series contains a unique solution that might meet the stated goals. Some question sets might have more than one correct solution, while others might not have a correct solution.

After you answer a question in this section, you will NOT be able to return to it. As a result, these questions will not appear in the review screen.

You have an Azure subscription that contains 10 virtual networks. The virtual networks are hosted in separate resource groups.

Another administrator plans to create several network security groups (NSGs) in the subscription.

You need to ensure that when an NSG is created, it automatically blocks TCP port 8080 between the virtual networks.

Solution: From the Resource providers blade, you unregister the Microsoft.ClassicNetwork provider.

Does this meet the goal?

A. Yes

B. No

Correct Answer: B

Section: [none]

Explanation

Explanation/Reference:

Explanation:

You should use a policy definition.

Reference:

<https://vceplus.com/>

<https://docs.microsoft.com/en-us/azure/azure-policy/policy-definition>

QUESTION 18

You have an Azure subscription named Subscription1. Subscription1 contains a virtual machine named VM1.

You have a computer named Computer1 that runs Windows 10. Computer1 is connected to the Internet.

You add a network interface named Interface1 to VM1 as shown in the exhibit. (Click the **Exhibit** tab.)



Network Interface: vm1173 Effective security rules Topology
 Virtual network/subnet: RG1-vnet/default Public IP: VM1-ip Private IP: 10.0.0.5 Accelerated networking: Disabled

Inbound port rules Outbound port rules Application security groups Load balancing

Network security group VM1-nsg (attached to network interface: vm1173) Add inbound port rule
 Impacts 0 subnets, 1 network interfaces

PRIORITY	NAME	PORT	PROT...	SOURCE	DESTINATI...	ACTION
300	 RDP	3389	TCP	Any	Any	 Allow ...
65000	AllowVnetInBound	Any	Any	VirtualNetw...	VirtualNe...	 Allow ...
65001	AllowAzureLoadBalancerInBo...	Any	Any	AzureLoadB...	Any	 Allow ...
65500	DenyAllInBound	Any	Any	Any	Any	 Deny ...

From Computer1, you attempt to connect to VM1 by using Remote Desktop, but the connection fails.

You need to establish a Remote Desktop connection to VM1.

What should you do first?

- A. Change the priority of the RDP rule.
- B. Attach a network interface.
- C. Delete the DenyAllInBound rule.
- D. Start VM1.

Correct Answer: D

Section: [none]

Explanation

Explanation/Reference:

Explanation:

Incorrect Answers:

A: Rules are processed in priority order, with lower numbers processed before higher numbers, because lower numbers have higher priority. Once traffic matches a rule, processing stops. RDP already has the lowest number and thus the highest priority.

B: The network interface has already been added to VM.

C: The Outbound rules are fine.

Reference:

<https://docs.microsoft.com/en-us/azure/virtual-network/security-overview>

QUESTION 19

You have an Azure virtual machine named VM1.

The network interface for VM1 is configured as shown in the exhibit. (Click the **Exhibit** tab.)



Network Interface: vm1175 **Effective security rules** **Topology** 

 Virtual network/subnet: RG5-vnet/default Public IP: 40.127.109.108 Private IP: 172.16.1.4 Accelerated networking: Disabled

APPLICATION SECURITY GROUPS

 Configure the application security groups

INBOUND PORT RULES

 Network security group VM1-nsg (attached to network interface: vm1175)

 Impacts 0 subnets, 1 network interfaces

Add inbound port rule

PRIORITY	NAME	PORT	PROTOCOL	SOURCE	DESTINATION	ACTION	
300	 RDP	3389	TCP	Any	Any	 Allow	...
400	 Rule1	80	TCP	Any	Any	 Deny	...
500	Rule2	80,443	TCP	Any	Any	 Deny	...
1000	Rule4	50-100,400-500	UDP	Any	Any	 Allow	...
2000	Rule5	50-5000	Any	Any	VirtualNetwork	 Deny	...
3000	Rule6	150-300	Any	Any	Any	 Allow	...
4000	Rule3	60-500	Any	Any	VirtualNetwork	 Allow	...
65000	AllowVnetInBound	Any	Any	VirtualNetwork	VirtualNetwork	 Allow	...
65001	AllowAzureLoadBalancerInBo...	Any	Any	AzureLoadBala...	Any	 Allow	...
65500	DenyAllInBound	Any	Any	Any	Any	 Deny	...

You deploy a web server on VM1, and then create a secure website that is accessible by using the HTTPS protocol. VM1 is used as a web server only.

You need to ensure that users can connect to the website from the internet.

<https://vceplus.com/>

What should you do?

- A. Create a new inbound rule that allows TCP protocol 443 and configure the protocol to have a priority of 501.
- B. For Rule5, change the Action to **Allow** and change the priority to **401**.
- C. Delete Rule1.
- D. Modify the protocol of Rule4.

Correct Answer: B

Section: [none]

Explanation

Explanation/Reference:

Explanation:

Rule 2 is blocking HTTPS access (port 443) and has a priority of 500.

Changing Rule 5 (ports 50-5000) and giving it a lower priority number will allow access on port 443.

Note: Rules are processed in priority order, with lower numbers processed before higher numbers, because lower numbers have higher priority. Once traffic matches a rule, processing stops.

Incorrect Answers:

A: Rule 2 is blocking HTTPS access (port 443) and has a priority of 500. Creating a rule for the same protocol (443) with a higher priority number will not help.

C: Rule 1 blocks access to port 80, which is used for HTTP, not HTTPS.

D: Rule 2 is blocking HTTPS access (port 443). Changing Rule 4 allows access on UDP but is a higher priority number than Rule. Changing the protocol on Rule 4 to TCP will not help if we don't also change the priority to a lower number.

References: <https://docs.microsoft.com/en-us/azure/virtual-network/security-overview>

QUESTION 20

HOTSPOT

You plan to deploy five virtual machines to a virtual network subnet.

Each virtual machine will have a public IP address and a private IP address.

Each virtual machine requires the same inbound and outbound security rules.

What is the minimum number of network interfaces and network security groups that you require? To answer, select the appropriate options in the answer area.

NOTE: Each correct selection is worth one point.

Hot Area:

Answer Area

Minimum number of network interfaces:

	▼
5	
10	
15	
20	

Minimum number of network security groups:

	▼
1	
2	
5	
10	

Correct Answer:

Answer Area

Minimum number of network interfaces:

	▼
5	
10	
15	
20	

Minimum number of network security groups:

	▼
1	
2	
5	
10	

Section: [none]

Explanation

Explanation/Reference:

Explanation:

Box 1: 5

A public and a private IP address can be assigned to a single network interface.

Box 2: 1

You can associate zero, or one, network security group to each virtual network subnet and network interface in a virtual machine. The same network security group can be associated to as many subnets and network interfaces as you choose.

<https://vceplus.com/>

Reference:

<https://docs.microsoft.com/en-us/azure/virtual-network/virtual-network-network-interface-addresses>

QUESTION 21

You have an Azure subscription named Subscription1 that contains the resource groups shown in the following table.

Name	Region
RG1	East Asia
RG2	East US

In RG1, you create a virtual machine named VM1 in the East Asia location.

You plan to create a virtual network named VNET1.

You need to create VNET1, and then connect VM1 to VNET1.

What are two possible ways to achieve this goal? Each correct answer presents a complete solution.

NOTE: Each correct selection is worth one point.

- A. Create VNET1 in RG2, and then set East Asia as the location.
- B. Create VNET1 in a new resource group in the West US location, and then set West US as the location.
- C. Create VNET1 in RG1, and then set East US as the location.
- D. Create VNET1 in RG2, and then set East US as the location.
- E. Create VNET1 in RG1, and then set East Asia as the location.

Correct Answer: AE

Section: [none]

Explanation

Explanation/Reference:

QUESTION 22

You have an Azure subscription that contains a virtual network named VNet1. VNet1 contains four subnets named Gateway, Perimeter, NVA, and Production.

The NVA subnet contains two network virtual appliances (NVAs) that will perform network traffic inspection between the Perimeter subnet and the Production subnet.

You need to implement an Azure load balancer for the NVAs. The solution must meet the following requirements:

<https://vceplus.com/>

- The NVAs must run in an active-active configuration that uses automatic failover.
- The NVAs must load balance traffic to two services on the Production subnet. The services have different IP addresses.

Which three actions should you perform? Each correct answer presents part of the solution.

NOTE: Each correct selection is worth one point.

- A. Add two load balancing rules that have HA Ports enabled and Floating IP disabled.
- B. Add a frontend IP configuration, two backend pools, and a health probe.
- C. Add two load balancing rules that have HA Ports and Floating IP enabled.
- D. Deploy a standard load balancer.
- E. Deploy a basic load balancer.
- F. Add a frontend IP configuration a backend pool, and a health probe.

Correct Answer: BCD

Section: [none]

Explanation

Explanation/Reference:

Explanation:

A standard load balancer is required for the HA ports.

Two backend pools are needed as there are two services with different IP addresses.

Floating IP rule is used where backend ports are reused.

Incorrect Answers:

F: HA Ports are not available for the basic load balancer.

References:

<https://docs.microsoft.com/en-us/azure/load-balancer/load-balancer-standard-overview>

<https://docs.microsoft.com/en-us/azure/load-balancer/load-balancer-multivip-overview>

QUESTION 23

SIMULATION

Please wait while the virtual machine loads. Once loaded, you may proceed to the lab section. This may take a few minutes, and the wait time will not be deducted from your overall test time.

When the Next button is available, click it to access the lab section. In this section, you will perform a set of tasks in a live environment. While most functionality will be available to you as it would be in a live environment, some functionality (e.g. copy and paste, ability to navigate to external websites) will not be possible by design.

<https://vceplus.com/>

Scoring is based on the outcome of performing the tasks stated in the lab. In other words, it doesn't matter how you accomplish the task, if you successfully perform it, you will earn credit for that task.

Labs are not timed separately, and this exam may have more than one lab that you must complete. You can use as much time as you would like to complete each lab. But, you should manage your time appropriately to ensure that you are able to complete the lab(s) and all other sections of the exam in the time provided.

Please note that once you submit your work by clicking the Next button within a lab, you will NOT be able to return to the lab.

You may now click next to proceed to the lab.

Use the following login credentials as needed:

Azure Username: XXXXXXXX

Azure Password: XXXXXXXX

The following information is for technical support purposes only:

Lab Instance: 9172796





You plan to configure VM1 to be accessible from the Internet.

You need to add a public IP address to the network interface used by VM1.

What should you do from the Azure portal?

Correct Answer: See solution below.

Section: [none]

Explanation

Explanation/Reference:

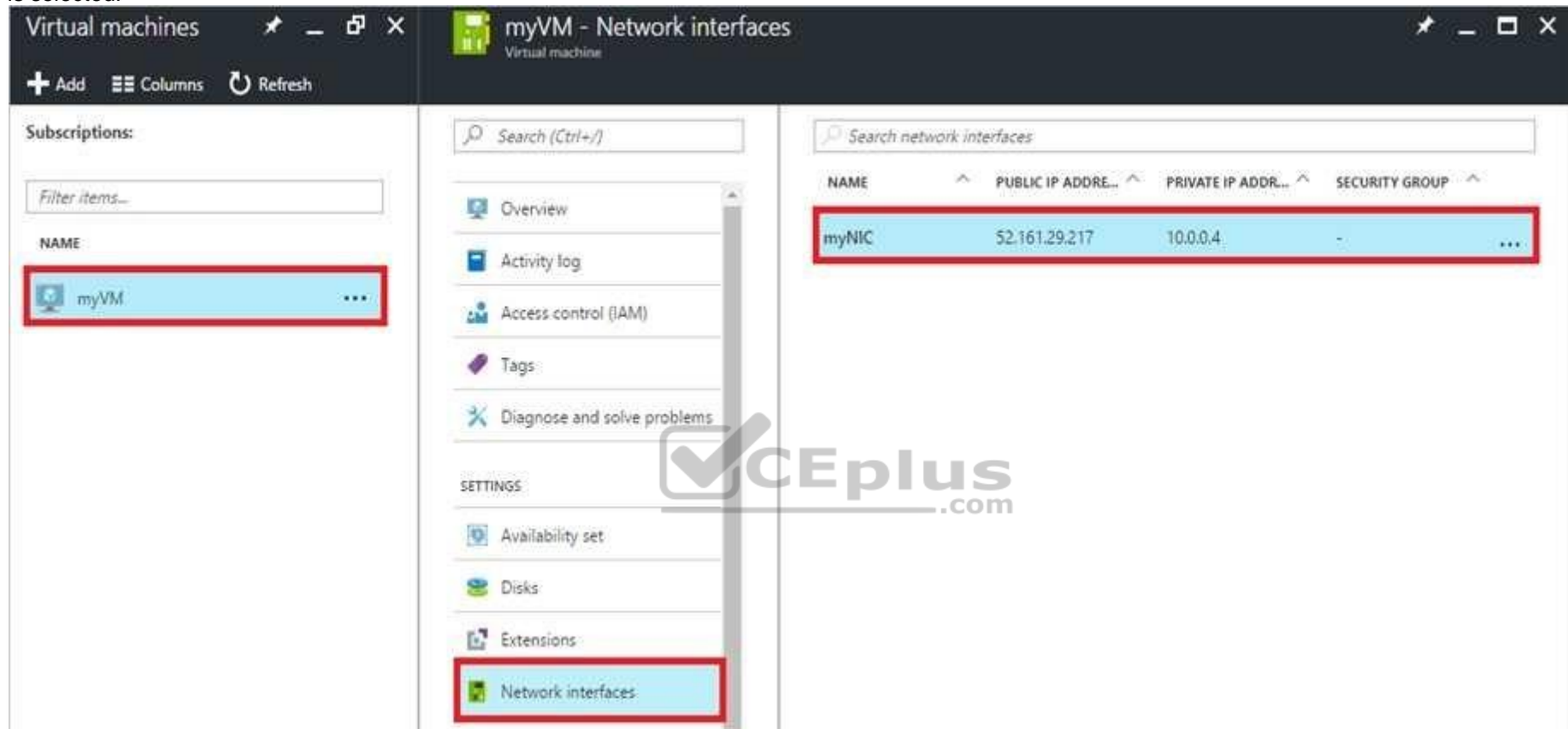
Explanation:

You can add private and public IP addresses to an Azure network interface by completing the steps that follow.

Step 1: In Azure portal, click More services > type virtual machines in the filter box, and then click Virtual machines.

<https://vceplus.com/>

Step 2: In the Virtual machines pane, click the VM you want to add IP addresses to. Click Network interfaces in the virtual machine pane that appears, and then select the network interface you want to add the IP addresses to. In the example shown in the following picture, the NIC named myNIC from the VM named myVM is selected:



Step 3: In the pane that appears for the NIC you selected, click IP configurations.

Step 4: Click Create public IP address.

Create public IP address

* Name
myPublicIp3 ✓

* IP address assignment
☐ Dynamic ☒ Static

* Idle timeout (minutes) ⓘ
 4

DNS name label ⓘ

westcentralus.cloudapp.azure.com

* Subscription
[Subscription name] ▼

* Resource group ⓘ
☐ Create new ☒ Use existing
myResourceGroup ▼

* Location
West Central US ▼

☐ Pin to dashboard

[Automation options](#)



Step 5: In the Create public IP address pane that appears, enter a Name, select an IP address assignment type, a Subscription, a Resource group, and a Location, then click Create, as shown in the following picture:

References: <https://docs.microsoft.com/en-us/azure/virtual-network/virtual-network-multiple-ip-addresses-portal>

QUESTION 24

You have an Azure subscription that contains a virtual network named VNET1. VNET1 contains the subnets shown in the following table.

Name	Connected virtual machines
Subnet1	VM1, VM2
Subnet2	VM3, VM4
Subnet3	VM5, VM6

Each virtual machine uses a static IP address.

You need to create network security groups (NSGs) to meet following requirements:

- Allow web requests from the internet to VM3, VM4, VM5, and VM6.
- Allow all connections between VM1 and VM2.
- Allow Remote Desktop connections to VM1.

Prevent all other network traffic to VNET1.

What is the minimum number of NSGs you should create?

- A. 1
- B. 3
- C. 4
- D. 12

Correct Answer: C

Section: [none]

Explanation

Explanation/Reference:

Explanation:

Note: A network security group (NSG) contains a list of security rules that allow or deny network traffic to resources connected to Azure Virtual Networks (VNet). NSGs can be associated to subnets, individual VMs (classic), or individual network interfaces (NIC) attached to VMs (Resource Manager).

Each network security group also contains default security rules.

References: <https://docs.microsoft.com/en-us/azure/virtual-network/security-overview#default-security-rules>

QUESTION 25

Note: This question is part of a series of questions that present the same scenario. Each question in the series contains a unique solution that might meet the stated goals. Some question sets might have more than one correct solution, while others might not have a correct solution.

After you answer a question in this section, you will NOT be able to return to it. As a result, these questions will not appear in the review screen.

You have a computer named Computer1 that has a point-to-site VPN connection to an Azure virtual network named VNet1. The point-to-site connection uses a selfsigned certificate.

From Azure, you download and install the VPN client configuration package on a computer named Computer2.

You need to ensure that you can establish a point-to-site VPN connection to VNet1 from Computer2.

Solution: You export the client certificate from Computer1 and install the certificate on Computer2.

Does this meet the goal?

- A. Yes
- B. No

Correct Answer: A

Section: [none]

Explanation

Explanation/Reference:

Explanation:

Each client computer that connects to a VNet using Point-to-Site must have a client certificate installed. You generate a client certificate from the self-signed root certificate, and then export and install the client certificate. If the client certificate is not installed, authentication fails.

References: <https://docs.microsoft.com/en-us/azure/vpn-gateway/vpn-gateway-certificates-point-to-site>

QUESTION 26

Note: This question is part of a series of questions that present the same scenario. Each question in the series contains a unique solution that might meet the stated goals. Some question sets might have more than one correct solution, while others might not have a correct solution.

After you answer a question in this section, you will NOT be able to return to it. As a result, these questions will not appear in the review screen.

<https://vceplus.com/>

You have a computer named Computer1 that has a point-to-site VPN connection to an Azure virtual network named VNet1. The point-to-site connection uses a selfsigned certificate.

From Azure, you download and install the VPN client configuration package on a computer named Computer2.

You need to ensure that you can establish a point-to-site VPN connection to VNet1 from Computer2.

Solution: On Computer2, you set the Startup type for the IPsec Policy Agent service to **Automatic**.

Does this meet the goal?

- A. Yes
- B. No

Correct Answer: B

Section: [none]

Explanation

Explanation/Reference:

Explanation:

Instead export the client certificate from Computer1 and install the certificate on Computer2.

Note: Each client computer that connects to a VNet using Point-to-Site must have a client certificate installed. You generate a client certificate from the self-signed root certificate, and then export and install the client certificate. If the client certificate is not installed, authentication fails.

References: <https://docs.microsoft.com/en-us/azure/vpn-gateway/vpn-gateway-certificates-point-to-site>

QUESTION 27

You have an Azure subscription named Subscription1 that contains an Azure virtual network named VM1. VM1 is in a resource group named RG1.

VM1 runs services that will be used to deploy resources to RG1.

You need to ensure that a service running on VM1 can manage the resources in RG1 by using the identity of VM1.

What should you do first?

- A. From the Azure portal, modify the Access control (IAM) settings of RG1.
- B. From the Azure portal, modify the Policies settings of RG1.
- C. From the Azure portal, modify the Access control (IAM) settings of VM1.
- D. From the Azure portal, modify the value of the Managed Service Identity option for VM1.

Correct Answer: D

Section: [none]

Explanation

Explanation/Reference:

Explanation:

The managed identities for Azure resources feature in Azure Active Directory (Azure AD) solves this problem. The feature provides Azure services with an automatically managed identity in Azure AD. You can use the identity to authenticate to any service that supports Azure AD authentication, including Key Vault, without any credentials in your code.

References: <https://docs.microsoft.com/en-us/azure/active-directory/managed-identities-azure-resources/overview>

QUESTION 28

SIMULATION

Please wait while the virtual machine loads. Once loaded, you may proceed to the lab section. This may take a few minutes, and the wait time will not be deducted from your overall test time.

When the Next button is available, click it to access the lab section. In this section, you will perform a set of tasks in a live environment. While most functionality will be available to you as it would be in a live environment, some functionality (e.g. copy and paste, ability to navigate to external websites) will not be possible by design.

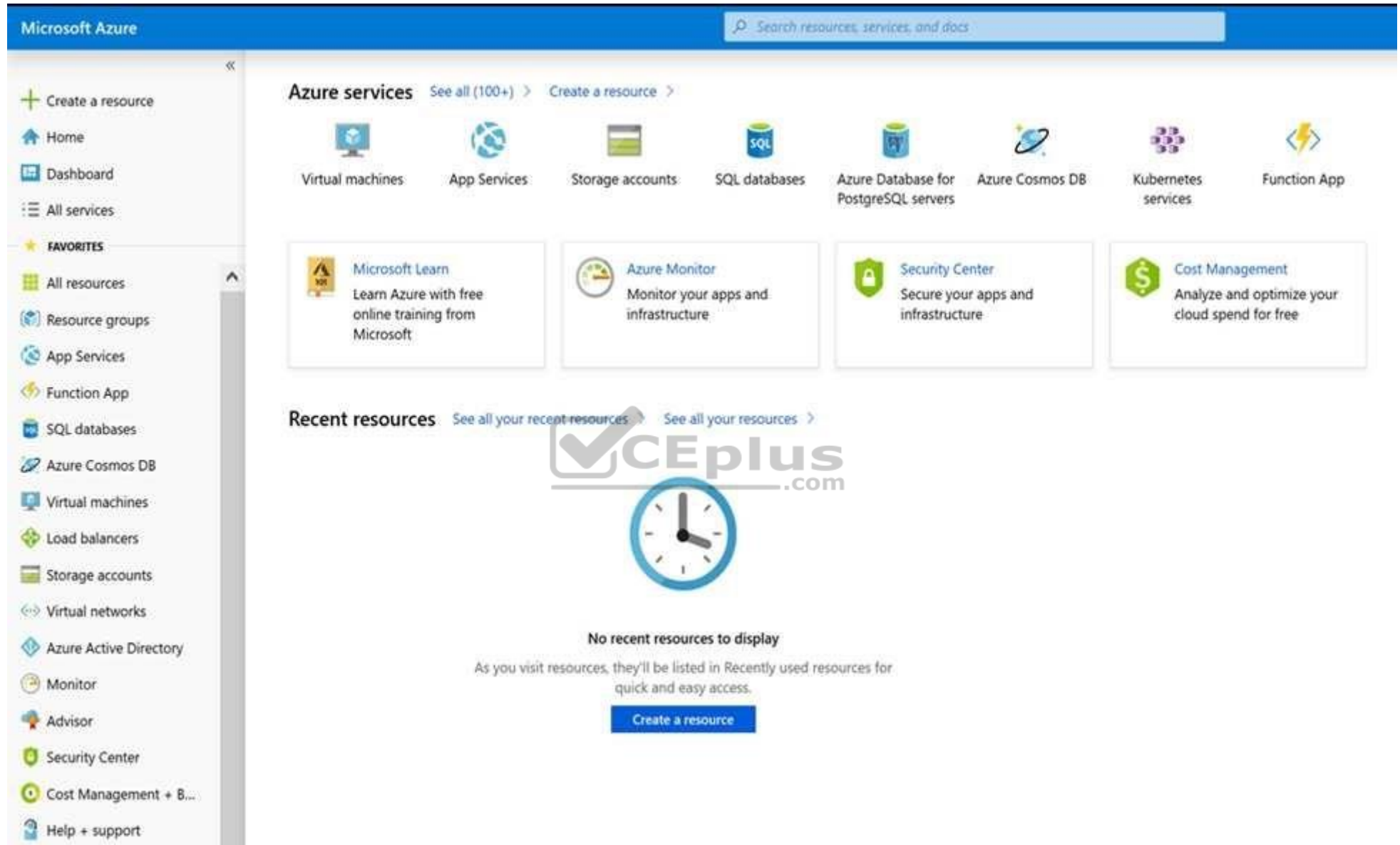
Scoring is based on the outcome of performing the tasks stated in the lab. In other words, it doesn't matter how you accomplish the task, if you successfully perform it, you will earn credit for that task.

Labs are not timed separately, and this exam may have more than one lab that you must complete. You can use as much time as you would like to complete each lab. But, you should manage your time appropriately to ensure that you are able to complete the lab(s) and all other sections of the exam in the time provided.

Please note that once you submit your work by clicking the Next button within a lab, you will NOT be able to return to the lab.

You may now click next to proceed to the lab.





You need to create a virtual network named VNET1008 that contains three subnets named subnet0, subnet1, and subnet2. The solution must meet the following requirements:

- Connections from any of the subnets to the Internet must be blocked.

<https://vceplus.com/>

- Connections from the Internet to any of the subnets must be blocked.
- The number of network security groups (NSGs) and NSG rules must be minimized.

What should you do from the Azure portal?

Correct Answer: See solution below.

Section: [none]

Explanation

Explanation/Reference:

Explanation:

Step 1: Click Create a resource in the portal.

Step 2: Enter Virtual network in the Search the Marketplace box at the top of the New pane that appears. Click Virtual network when it appears in the search results.

Step 3: Select Classic in the Select a deployment model box in the Virtual Network pane that appears, then click Create.

Step 4: Enter the following values on the Create virtual network (classic) pane and then click Create:

Name: VNET1008

Address space: 10.0.0.0/16

Subnet name: subnet0

Resource group: Create new

Subnet address range: 10.0.0.0/24

Subscription and location: Select your subscription and location.

Step 5: In the portal, you can create only one subnet when you create a virtual network. Click Subnets (in the SETTINGS section) on the Create virtual network (classic) pane that appears.

Click +Add on the VNET1008 - Subnets pane that appears.

Step 6: Enter subnet1 for Name on the Add subnet pane. Enter 10.0.1.0/24 for Address range. Click OK.

Step 7: Create the third subnet: Click +Add on the VNET1008 - Subnets pane that appears. Enter subnet2 for Name on the Add subnet pane. Enter 10.0.2.0/24 for Address range. Click OK.

References: <https://docs.microsoft.com/en-us/azure/virtual-network/create-virtual-network-classic>

QUESTION 29

Note: This question is part of a series of questions that present the same scenario. Each question in the series contains a unique solution that might meet the stated goals. Some question sets might have more than one correct solution, while others might not have a correct solution.

After you answer a question in this section, you will NOT be able to return to it. As a result, these questions will not appear in the review screen.

You manage a virtual network named VNet1 that is hosted in the West US Azure region.

VNet1 hosts two virtual machines named VM1 and VM2 that run Windows Server.

You need to inspect all the network traffic from VM1 to VM2 for a period of three hours.

Solution: From Azure Network Watcher, you create a connection monitor.

Does this meet the goal?

A. Yes

B. No

Correct Answer: A

Section: [none]

Explanation

Explanation/Reference:

References: <https://azure.microsoft.com/en-us/updates/general-availability-azure-network-watcher-connection-monitor-in-all-public-regions/>

QUESTION 30

Note: This question is part of a series of questions that present the same scenario. Each question in the series contains a unique solution that might meet the stated goals. Some question sets might have more than one correct solution, while others might not have a correct solution.

After you answer a question in this section, you will NOT be able to return to it. As a result, these questions will not appear in the review screen.

You manage a virtual network named VNet1 that is hosted in the West US Azure region.

VNet1 hosts two virtual machines named VM1 and VM2 that run Windows Server.

You need to inspect all the network traffic from VM1 to VM2 for a period of three hours.

Solution: From Azure Network Watcher, you create a packet capture.

Does this meet the goal?

A. Yes

B. No

Correct Answer: B

Section: [none]

Explanation

Explanation/Reference:

Explanation:

Use the Connection Monitor feature of Azure Network Watcher.

References: <https://azure.microsoft.com/en-us/updates/general-availability-azure-network-watcher-connection-monitor-in-all-public-regions/>

QUESTION 31

You have an Azure subscription named Subscription1 that contains two Azure virtual networks named VNet1 and VNet2. VNet1 contains a VPN gateway named VPNGW1 that uses static routing. There is a site-to-site VPN connection between your on-premises network and VNet1.

On a computer named Client1 that runs Windows 10, you configure a point-to-site VPN connection to VNet1.

You configure virtual network peering between VNet1 and VNet2. You verify that you can connect to VNet2 from the on-premises network. Client1 is unable to connect to VNet2.

You need to ensure that you can connect Client1 to VNet2.

What should you do?

- A. Select **Allow gateway transit** on VNet2.
- B. Enable BGP on VPNGW1.
- C. Select **Allow gateway transit** on VNet1.
- D. Download and re-install the VPN client configuration package on Client1.

Correct Answer: D

Section: [none]

Explanation

Explanation/Reference:

References:

<https://docs.microsoft.com/en-us/azure/vpn-gateway/vpn-gateway-about-point-to-site-routing>

QUESTION 32

You have an Azure subscription that contains the resources in the following table.

Name	Type	Details
VNet1	Virtual network	<i>Not applicable</i>
Subnet1	Subnet	Hosted on VNet1
VM1	Virtual machine	On Subnet1
VM2	Virtual machine	On Subnet1

VM1 and VM2 are deployed from the same template and host line-of-business applications accessed by using Remote Desktop.

You configure the network security group (NSG) shown in the exhibit. (Click the **Exhibit** tab.)



[→ Move](#)
[🗑 Delete](#)
[🔄 Refresh](#)

Resource group ([change](#)) : [RG1lod9053488](#)

Custom security rules : 1 inbound, 1 outbound

Location : East US

Associated with : 0 subnets, 0 network interfaces

Subscription ([change](#)) : [Microsoft AZ](#)

Subscription ID : ac344a74-f85a-4b2e-8057-642088faaf20

Tags ([change](#)) : [Click here to add tags](#)



Inbound security rules

PRIORITY	NAME	PORT	PROTOCOL	SOURCE	DESTINATION	ACTION
100	Port_80	80	TCP	Internet	Any	🚫 Deny
65000	AllowVnetInBound	Any	Any	VirtualNetwork	VirtualNetwork	✅ Allow
65001	AllowAzureLoadBalancerInBound	Any	Any	AzureLoadBalancer	Any	✅ Allow
65500	DenyAllInBound	Any	Any	Any	Any	🚫 Deny

Outbound security rules

PRIORITY	NAME	PORT	PROTOCOL	SOURCE	DESTINATION	ACTION
100	🚩 DenyWebSites	80	TCP	Any	Internet	🚫 Deny
65000	AllowVnetOutBound	Any	Any	VirtualNetwork	VirtualNetwork	✅ Allow
65001	AllowInternetOutBound	Any	Any	Any	Internet	✅ Allow
65500	DenyAllOutBound	Any	Any	Any	Any	🚫 Deny

You need to prevent users of VM1 and VM2 from accessing websites on the Internet over TCP port 80.

<https://vceplus.com/>

What should you do?

- A. Change the DenyWebSites outbound security rule.
- B. Change the Port_80 inbound security rule.
- C. Disassociate the NSG from a network interface.
- D. Associate the NSG to Subnet1.

Correct Answer: D

Section: [none]

Explanation

Explanation/Reference:

Explanation:

You can associate or dissociate a network security group from a network interface or subnet.

The NSG has the appropriate rule to block users from accessing the Internet. We just need to associate it with Subnet1.

References: <https://docs.microsoft.com/en-us/azure/virtual-network/manage-network-security-group>

QUESTION 33

You have two Azure virtual networks named VNet1 and VNet2. VNet1 contains an Azure virtual machine named VM1. VNet2 contains an Azure virtual machine named VM2.

VM1 hosts a frontend application that connects to VM2 to retrieve data.

Users report that the frontend application is slower than usual.

You need to view the average round-trip time (RTT) of the packets from VM1 to VM2.

Which Azure Network Watcher feature should you use?

- A. IP flow verify
- B. Connection monitor
- C. NSG flow logs
- D. Connection troubleshoot

Correct Answer: B

Section: [none]

Explanation

Explanation/Reference:

Explanation:

The connection monitor capability monitors communication at a regular interval and informs you of reachability, latency, and network topology changes between the VM and the endpoint

Incorrect Answers:

A: The IP flow verify capability enables you to specify a source and destination IPv4 address, port, protocol (TCP or UDP), and traffic direction (inbound or outbound). IP flow verify then tests the communication and informs you if the connection succeeds or fails. If the connection fails, IP flow verify tells you which security rule allowed or denied the communication, so that you can resolve the problem.

C: The NSG flow log capability allows you to log the source and destination IP address, port, protocol, and whether traffic was allowed or denied by an NSG.

D: The connection troubleshoot capability enables you to test a connection between a VM and another VM, an FQDN, a URI, or an IPv4 address. The test returns similar information returned when using the connection monitor capability, but tests the connection at a point in time, rather than monitoring it over time, as connection monitor does.

Reference:

<https://docs.microsoft.com/en-us/azure/network-watcher/network-watcher-monitoring-overview>

QUESTION 34

You have a virtual network named VNet1 as shown in the exhibit. (Click the **Exhibit** tab.)

Refresh
Move
Delete

Resource group (change)
Production

Location
West US

Subscription (change)
Production subscription

Subscription ID
14d26092-8e42-4ea7-b770-9dcef70fb1ea

Tags (change)
Click here to add tags

Address space
10.2.0.0/16

DNS servers
Azure provided DNS service

Connected devices

Search connected devices

DEVICE	TYPE	IP ADDRESS	SUBNET
No results.			

No devices are connected to VNet1.

You plan to peer VNet1 to another virtual network named VNet2 in the same region. VNet2 has an address space of 10.2.0.0/16.

You need to create the peering.

What should you do first?

- A. Create a subnet on VNet1 and VNet2.
- B. Add a gateway subnet to VNet1.
- C. Modify the address space of VNet1.
- D. Configure a service endpoint on VNet2.

Correct Answer: C

<https://vceplus.com/>

Section: [none]

Explanation

Explanation/Reference:

Explanation:

The virtual networks you peer must have non-overlapping IP address spaces. The exhibit indicates that VNet1 has an address space of 10.2.0.0/16, which is the same as VNet2, and thus overlaps. We need to change the address space for VNet1.

Reference: <https://docs.microsoft.com/en-us/azure/virtual-network/virtual-network-manage-peering#requirements-and-constraints>



Question Set 1

QUESTION 1

You have two Azure Active Directory (Azure AD) tenants named contoso.com and fabrikam.com.

You have a Microsoft account that you use to sign in to both tenants.

You need to configure the default sign-in tenant for the Azure portal.

What should you do?

- A. From Azure Cloud Shell, run `Set-AzureRmSubscription`.
- B. From Azure Cloud Shell, run `Set-AzureRmContext`.
- C. From the Azure portal, configure the portal settings.
- D. From the Azure portal, change the directory.

Correct Answer: B

Section: [none]

Explanation

Explanation/Reference:

Explanation:

The `Set-AzureRmContext` cmdlet sets authentication information for cmdlets that you run in the current session. The context includes tenant, subscription, and environment information.

References: <https://docs.microsoft.com/en-us/powershell/module/azurerm.profile/set-azurermscontext>

QUESTION 2

You have an Active Directory forest named contoso.com.

You install and configure Azure AD Connect to use password hash synchronization as the single sign-on (SSO) method. Staging mode is enabled.

You review the synchronization results and discover that the Synchronization Service Manager does not display any sync jobs.

You need to ensure that the synchronization completes successfully.

What should you do?

- A. Run Azure AD Connect and set the SSO method to Pass-through Authentication.

- B. From Synchronization Service Manager, run a full import.
- C. From Azure PowerShell, run `Start-AdSyncSyncCycle -PolicyType Initial`.
- D. Run Azure AD Connect and disable staging mode.

Correct Answer: D

Section: [none]

Explanation

Explanation/Reference:

Explanation:

Staging mode must be disabled. If the Azure AD Connect server is in staging mode, password hash synchronization is temporarily disabled.

References: <https://docs.microsoft.com/en-us/azure/active-directory/connect/active-directory-aadconnectsync-troubleshoot-password-hash-synchronization#no-passwords-are-synchronized-troubleshoot-by-using-the-troubleshooting-task>

QUESTION 3

You have an Azure Active Directory (Azure AD) tenant named contosocloud.onmicrosoft.com.

Your company has a public DNS zone for contoso.com.

You add contoso.com as a custom domain name to Azure AD.

You need to ensure that Azure can verify the domain name.

Which type of DNS record should you create?

- A. SRV
- B. PTR
- C. RRSIG
- D. TXT

Correct Answer: D

Section: [none]

Explanation

Explanation/Reference:

References: <https://docs.microsoft.com/en-us/azure/active-directory/fundamentals/add-custom-domain>

QUESTION 4

You sign up for Azure Active Directory (Azure AD) Premium.

You need to add a user named admin1@contoso.com as an administrator on all the computers that will be joined to the Azure AD domain.

<https://vceplus.com/>

What should you configure in Azure AD?

- A. Providers from the MFA Server blade
- B. Device settings from the Devices blade
- C. General settings from the Groups blade
- D. User settings from the Users blade

Correct Answer: B

Section: [none]

Explanation

Explanation/Reference:

Explanation:

When you connect a Windows device with Azure AD using an Azure AD join, Azure AD adds the following security principles to the local administrators group on the device:

- The Azure AD global administrator role
- The Azure AD device administrator role ▪

The user performing the Azure AD join

In the Azure portal, you can manage the device administrator role on the Devices page. To open the Devices page:

1. Sign in to your Azure portal as a global administrator or device administrator.
2. On the left navbar, click Azure Active Directory.
3. In the Manage section, click Devices.
4. On the Devices page, click Device settings.
5. To modify the device administrator role, configure Additional local administrators on Azure AD joined devices.

Reference: <https://docs.microsoft.com/en-us/azure/active-directory/devices/assign-local-admin>

QUESTION 5

HOTSPOT

You have an Azure Active Directory (Azure AD) tenant.

You need to create a conditional access policy that requires all users to use multi-factor authentication when they access the Azure portal.

Which three settings should you configure? To answer, select the appropriate settings in the answer area.

NOTE: Each correct selection is worth one point.

Hot Area:

<https://vceplus.com/>

Answer Area

* Name

Policy1



Assignments

Users and groups ⓘ

0 users and groups selected



Cloud apps ⓘ

0 cloud apps selected



Conditions ⓘ

0 conditions selected



Access controls

Grant ⓘ

0 controls selected



Session ⓘ

0 controls selected



Enable policy

On

Off

<https://vceplus.com/>

Correct Answer:



Answer Area

* Name

Policy1



Assignments

Users and groups ⓘ

0 users and groups selected



Cloud apps ⓘ

0 cloud apps selected



Conditions ⓘ

0 conditions selected



Access controls

Grant ⓘ

0 controls selected



Session ⓘ

0 controls selected



Enable policy

On

Off

<https://vceplus.com/>

Section: [none]

Explanation

Explanation/Reference:

Explanation:

Reference: <https://docs.microsoft.com/en-us/azure/active-directory/conditional-access/app-based-mfa>

QUESTION 6

You have an Azure Active Directory (Azure AD) tenant.

You have an existing Azure AD conditional access policy named Policy1. Policy1 enforces the use of Azure AD-joined devices when members of the Global Administrators group authenticate to Azure AD from untrusted locations.

You need to ensure that members of the Global Administrators group will also be forced to use multi-factor authentication when authenticating from untrusted locations.

What should you do?

- A. From the Azure portal, modify session control of Policy1.
- B. From the multi-factor authentication page, modify the user settings.
- C. From the Azure portal, modify grant control of Policy1.
- D. From the multi-factor authentication page, modify the service settings.

Correct Answer: C

Section: [none]

Explanation

Explanation/Reference:

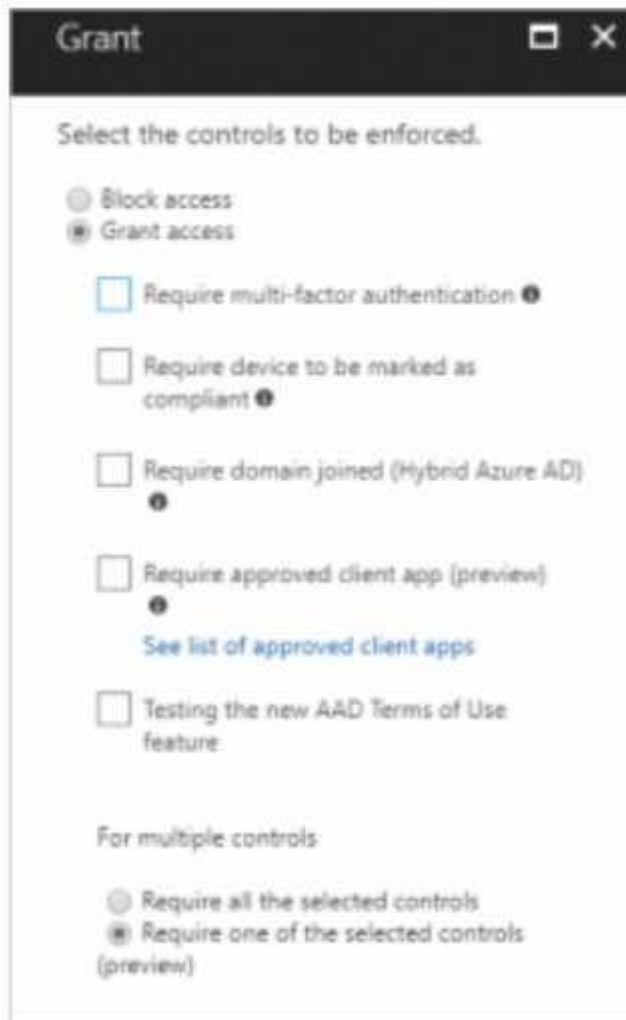
Explanation:

There are two types of controls: ▪

Grant controls – To gate access

▪ Session controls – To restrict access to a session

Grant controls oversee whether a user can complete authentication and reach the resource that they're attempting to sign-in to. If you have multiple controls selected, you can configure whether all of them are required when your policy is processed. The current implementation of Azure Active Directory enables you to set the following grant control requirements:



Grant

Select the controls to be enforced.

☐ Block access

☒ Grant access

☐ Require multi-factor authentication ⓘ

☐ Require device to be marked as compliant ⓘ

☐ Require domain joined (Hybrid Azure AD) ⓘ

☐ Require approved client app (preview) ⓘ

[See list of approved client apps](#)

☐ Testing the new AAD Terms of Use feature

For multiple controls:

☐ Require all the selected controls

☒ Require one of the selected controls (preview)



Reference: <https://blog.lumen21.com/2017/12/15/conditional-access-in-azure-active-directory/>

QUESTION 7

From the MFA Server blade, you open the **Block/unblock users** blade as shown in the exhibit.

<https://vceplus.com/>

Block/unblock users

A blocked user will not receive Multi-Factor Authentication requests. Authentication attempts for that user will be automatically denied. A user will remain blocked for 90 days from the time they are blocked. To manually unblock a user, click the "Unblock" action.

Blocked users

USER	REASON	DATE	ACTION
AlexW@M365x832514.OnMicrosoft.com	Lost phone	06/14/2018, 8:26:38 PM	Unblock

What caused AlexW to be blocked?

- A. The user account password expired.
- B. The user entered an incorrect PIN four times within 10 minutes.
- C. An administrator manually blocked the user.
- D. The user reported a fraud alert when prompted for additional authentication.

Correct Answer: C

Section: [none]

Explanation

Explanation/Reference:

Explanation:

An Administrator can block a user:

1. Sign in to the Azure portal as an administrator.
2. Browse to Azure Active Directory > MFA > Block/unblock users.
3. Select Add to block a user.
4. Select the Replication Group. Enter the username for the blocked user as username@domain.com. Enter a comment in the Reason field, for example: Lost phone.
5. Select Add to finish blocking the user.

Reference:

<https://vceplus.com/>

<https://docs.microsoft.com/en-us/azure/active-directory/authentication/howto-mfa-mfasettings>

QUESTION 8

You have an Azure Active Directory (Azure AD) tenant named contoso.onmicrosoft.com.

You hire a temporary vendor. The vendor uses a Microsoft account that has a sign-in of user1@outlook.com.

You need to ensure that the vendor can authenticate to the tenant by using user1@outlook.com.

What should you do?

- A. From the Azure portal, add a custom domain name, create a new Azure AD user, and then specify user1@outlook.com as the username.
- B. From Azure Cloud Shell, run the `New-AzureADUser` cmdlet and specify the `-UserPrincipalName user1@outlook.com` parameter.
- C. From the Azure portal, add a new guest user, and then specify user1@outlook.com as the email address.
- D. From Windows PowerShell, run the `New-AzureADUser` cmdlet and specify the `-UserPrincipalName user1@outlook.com` parameter.

Correct Answer: D

Section: [none]

Explanation



Explanation/Reference:

Explanation:

UserPrincipalName - contains the UserPrincipalName (UPN) of this user. The UPN is what the user will use when they sign in into Azure AD. The common structure is @, so for Abby Brown in Contoso.com, the UPN would be AbbyB@contoso.com

Example:

To create the user, call the `New-AzureADUser` cmdlet with the parameter values:

```
powershell New-AzureADUser -AccountEnabled $True -DisplayName "Abby Brown" -PasswordProfile $PasswordProfile -MailNickName "AbbyB"
UserPrincipalName "AbbyB@contoso.com"
```

References: <https://docs.microsoft.com/bs-cyrl-ba/powershell/azure/active-directory/new-user-sample?view=azureadps-2.0>

QUESTION 9

You have an Azure Active Directory (Azure AD) tenant named contosocloud.onmicrosoft.com.

Your company has a public DNS zone for contoso.com.

<https://vceplus.com/>

You add contoso.com as a custom domain name to Azure AD.

You need to ensure that Azure can verify the domain name.

Which type of DNS record should you create?

- A. MX
- B. SRV
- C. DNSKEY
- D. NSEC

Correct Answer: A

Section: [none]

Explanation

Explanation/Reference:

References: <https://docs.microsoft.com/en-us/azure/dns/dns-web-sites-custom-domain>

QUESTION 10

You set the multi-factor authentication status for a user named admin1@contoso.com to **Enabled**.

Admin1 accesses the Azure portal by using a web browser.

Which additional security verifications can Admin1 use when accessing the Azure portal?

- A. a phone call, a text message that contains a verification code, and a notification or a verification code sent from the Microsoft Authenticator app
- B. an app password, a text message that contains a verification code, and a notification sent from the Microsoft Authenticator app
- C. an app password, a text message that contains a verification code, and a verification code sent from the Microsoft Authenticator app
- D. a phone call, an email message that contains a verification code, and a text message that contains an app password

Correct Answer: A

Section: [none]

Explanation

Explanation/Reference:

QUESTION 11

Your company has a main office in London that contains 100 client computers.

Three years ago, you migrated to Azure Active Directory (Azure AD).

The company's security policy states that all personal devices and corporate-owned devices must be registered or joined to Azure AD.

A remote user named User1 is unable to join a personal device to Azure AD from a home network.

You verify that other users can join their devices to Azure AD.

You need to ensure that User1 can join the device to Azure AD.

What should you do?

- A. From the Device settings blade, modify the **Users may join devices to Azure AD** setting.
- B. From the Device settings blade, modify the **Maximum number of devices per user** setting.
- C. Create a point-to-site VPN from the home network of User1 to Azure.
- D. Assign the User administrator role to User1.

Correct Answer: B

Section: [none]

Explanation



Explanation/Reference:

Explanation:

The Maximum number of devices setting enables you to select the maximum number of devices that a user can have in Azure AD. If a user reaches this quota, they will not be able to add additional devices until one or more of the existing devices are removed.

Incorrect Answers:

A: The Users may join devices to Azure AD setting enables you to select the users who can join devices to Azure AD. Options are All, Selected and None. The default is All.

C: Azure AD Join enables users to join their devices to Active Directory from anywhere as long as they have connectivity with the Internet.

References:

<https://docs.microsoft.com/en-us/azure/active-directory/devices/device-management-azure-portal>

<http://techgenix.com/pros-and-cons-azure-ad-join/>

QUESTION 12

You have an Azure Active Directory (Azure AD) tenant named contoso.onmicrosoft.com.

The User administrator role is assigned to a user named Admin1.

An external partner has a Microsoft account that uses the user1@outlook.com sign in.

Admin1 attempts to invite the external partner to sign in to the Azure AD tenant and receives the following error message: “Unable to invite user user1@outlook.com – Generic authorization exception.”

You need to ensure that Admin1 can invite the external partner to sign in to the Azure AD tenant.

What should you do?

- A. From the Roles and administrators blade, assign the Security administrator role to Admin1.
- B. From the Organizational relationships blade, add an identity provider.
- C. From the Custom domain names blade, add a custom domain.
- D. From the Users blade, modify the External collaboration settings.

Correct Answer: D

Section: [none]

Explanation

Explanation/Reference:

References: <https://techcommunity.microsoft.com/t5/Azure-Active-Directory/Generic-authorization-exception-inviting-Azure-AD-gests/td-p/274742>

QUESTION 13

Your company has an Azure Active Directory (Azure AD) tenant named contoso.com that is configured for hybrid coexistence with the on-premises Active Directory domain. The tenant contains the users shown in the following table.

Name	User Type	Source	Sign-in
User1	Member	Azure AD	User1@contoso.com
User2	Member	Windows Server Active Directory	User2@contoso.com
User3	Guest	Multiple	User3@outlook.com
User4	Guest	Multiple	User4@gmail.com

Whenever possible, you need to enable Azure Multi-Factor Authentication (MFA) for the users in contoso.com.

Which users should you enable for Azure MFA?

- A. User1 only
- B. User1, User2, and User3 only

- C. User1 and User2 only
- D. User1, User2, User3, and User4
- E. User2 only

Correct Answer: D

Section: [none]

Explanation

Explanation/Reference:



Testlet 2

Case study

This is a case study. **Case studies are not timed separately. You can use as much exam time as you would like to complete each case.** However, there may be additional case studies and sections on this exam. You must manage your time to ensure that you are able to complete all questions included on this exam in the time provided.

To answer the questions included in a case study, you will need to reference information that is provided in the case study. Case studies might contain exhibits and other resources that provide more information about the scenario that is described in the case study. Each question is independent of the other questions in this case study.

At the end of this case study, a review screen will appear. This screen allows you to review your answers and to make changes before you move to the next section of the exam. After you begin a new section, you cannot return to this section.

To start the case study

To display the first question in this case study, click the **Next** button. Use the buttons in the left pane to explore the content of the case study before you answer the questions. Clicking these buttons displays information such as business requirements, existing environment, and problem statements. If the case study has an **All Information** tab, note that the information displayed is identical to the information displayed on the subsequent tabs. When you are ready to answer a question, click the **Question** button to return to the question. **Overview**

Contoso, Ltd. is a manufacturing company that has offices worldwide. Contoso works with partner organizations to bring products to market.

Contoso products are manufactured by using blueprint files that the company authors and maintains.

Existing Environment

Currently, Contoso uses multiple types of servers for business operations, including the following:

- File servers
- Domain controllers
- Microsoft SQL Server servers

Your network contains an Active Directory forest named contoso.com. All servers and client computers are joined to Active Directory.

You have a public-facing application named App1. App1 is comprised of the following three tiers:

- A SQL database
- A web front end
- A processing middle tier

Each tier is comprised of five virtual machines. Users access the web front end by using HTTPS only.

<https://vceplus.com/>

Requirements

Planned Changes

Contoso plans to implement the following changes to the infrastructure:

- Move all the tiers of App1 to Azure.
- Move the existing product blueprint files to Azure Blob storage.
- Create a hybrid directory to support an upcoming Microsoft Office 365 migration project.

Technical Requirements

Contoso must meet the following technical requirements:

- Move all the virtual machines for App1 to Azure.
 - Minimize the number of open ports between the App1 tiers.
 - Ensure that all the virtual machines for App1 are protected by backups.
 - Copy the blueprint files to Azure over the Internet.
 - Ensure that the blueprint files are stored in the archive storage tier.
 - Ensure that partner access to the blueprint files is secured and temporary.
 - Prevent user passwords or hashes of passwords from being stored in Azure.
 - Use unmanaged standard storage for the hard disks of the virtual machines.
 - Ensure that when users join devices to Azure Active Directory (Azure AD), the users use a mobile phone to verify their identity
- Minimize administrative effort whenever possible

User Requirements

Contoso identifies the following requirements for users:

- Ensure that only users who are part of a group named Pilot can join devices to Azure AD.
- Designate a new user named Admin1 as the service admin for the Azure subscription.
- Admin1 must receive email alerts regarding service outages.
- Ensure that a new user named User3 can create network objects for the Azure subscription.

QUESTION 1

You need to recommend an identity solution that meets the technical requirements.

What should you recommend?

- A. Pass-through Authentication and single sign-on (SSO)
- B. password hash synchronization and single sign-on (SSO)

- C. federated single sign-on (SSO) and Active Directory Federation Services (AD FS)
- D. cloud-only user accounts

Correct Answer: A

Section: [none]

Explanation

Explanation/Reference:

Explanation:

Azure Active Directory (Azure AD) Pass-through Authentication allows users to sign in to both on-premises and cloud-based applications using the same passwords. When users sign in using Azure AD, this feature validates users' passwords directly against your on-premises Active Directory. On-premises passwords are never stored in the cloud in any form.

Scenario: Technical Requirements include:

Prevent user passwords or hashes of passwords from being stored in Azure.

Reference: <https://docs.microsoft.com/en-us/azure/active-directory/hybrid/how-to-connect-pta>

QUESTION 2

You need to meet the user requirement for Admin1.

What should you do?

- A. From the Subscription blade, select the subscription, and then modify the Access control (IAM) settings.
- B. From the Subscriptions blade, select the subscription, and then modify the Properties.
- C. From the Azure Active Directory blade, modify the Properties.
- D. From the Azure Active Directory blade, modify the Groups.

Correct Answer: B

Section: [none]

Explanation

Explanation/Reference:

Explanation:

Change the Service administrator for an Azure subscription

1. Sign in to Account Center as the Account administrator.
2. Select a subscription.
3. On the right side, select Edit subscription details.

<https://vceplus.com/>

Scenario: Designate a new user named Admin1 as the service administrator of the Azure subscription.

Reference: <https://docs.microsoft.com/en-us/azure/billing/billing-add-change-azure-subscription-administrator>



<https://vceplus.com/>



<https://vceplus.com/>