

5V0-61.19.VCEplus.premium.exam.60q

Number: 5V0-61.19  
Passing Score: 800  
Time Limit: 120 min  
File Version: 1.0



**Website:** <https://vceplus.com>

**VCE to PDF Converter:** <https://vceplus.com/vce-to-pdf/>

**Facebook:** <https://www.facebook.com/VCE.For.All.VN/>

**Twitter :** [https://twitter.com/VCE\\_Plus](https://twitter.com/VCE_Plus)

5V0-61.19

Workspace ONE Unified Endpoint Management Specialist



## Exam A

### QUESTION 1

What are three common Workspace ONE UEM issues? (Choose three.)

- A. Reporting issues
- B. Display issues
- C. Enrollment issues
- D. Assignment issues
- E. User role issues
- F. Active Directory sync issues

**Correct Answer:** BDE

**Section:** (none)

**Explanation**

**Explanation/Reference:**

### QUESTION 2

The ACC service account must be a member of which two groups in the Active Directory to provide the minimum level of required access? (Choose two.)

- A. Enterprise admins
- B. Event log readers
- C. Domain admin
- D. Remote Desktop users
- E. Domain guest

**Correct Answer:** AC

**Section:** (none)

**Explanation**

**Explanation/Reference:**

**QUESTION 3** Sometimes devices are unable to receive notifications from the Email Notification Services (ENS) server.

Which two troubleshooting steps should be taken? (Choose two.)

- A. Toggle between different connection types.
- B. Verify the keys values are not case-sensitive.
- C. Verify that the device is running the latest iOS version.
- D. Check the ENS connectivity to the Workspace ONE UEM Console.
- E. Verify VMware Boxer configuration key-value pair parameters.

**Correct Answer:** CD

**Section:** (none)

**Explanation**

**Explanation/Reference:**

**QUESTION 4** Which minimum rights on a Certificate Authority (CA) should be assigned for the account specified in the CA definition in the UEM Console?

- A. Local admin on the CA server with the privileges: read, issue and manage certificates, manage CA, request certificates permissions.

- B. Local admin on the CA server with the privileges: read, issue and manage certificates, request certificates permissions.
- C. Local admin on the CA server with the privileges: full access.
- D. Local admin on the CA server with the privileges: read, manage certificates, manage CA, request certificates permissions.

**Correct Answer:** A

**Section:** (none)

**Explanation**

**Explanation/Reference:**

Reference: [https://docs.vmware.com/en/VMware-Workspace-ONE-UEM/1910/WS1\\_Certificate\\_Authority\\_Integrations.pdf](https://docs.vmware.com/en/VMware-Workspace-ONE-UEM/1910/WS1_Certificate_Authority_Integrations.pdf)

#### QUESTION 5

A report is stuck in the queued state. Verification has shown that email delivery is working, but the reports are still not received. What should be checked first?

- A. If a manually generated report cannot be generated by the system and the subscription fails
- B. If a manually generated report result can be sent as an email via the console
- C. If the generated report is categorized as spam
- D. If a manually generated report result can or cannot be downloaded

**Correct Answer:** D

**Section:** (none)

**Explanation**

**Explanation/Reference:**

#### QUESTION 6

What are the minimum requirements for the PowerShell Mail integration with Microsoft Exchange service account when only iOS and Android devices are in use? (Choose two.)

- A. Mail Recipients role.
- B. Recipient Policies role.
- C. PowerShell 2.0.
- D. Port 80 between device server and Exchange server opened.
- E. Organization Client Access role.

**Correct Answer:** CE

**Section:** (none)

**Explanation**

**Explanation/Reference:**

**QUESTION 7** Where are the content gateway-related log files located on the Unified Access Gateway (UAG)?

- A. /var/log/airwatch/gateway/
- B. /opt/vmware/gateway/logs
- C. /var/log/airwatch/content-gateway/
- D. /log/vmware/content-gateway/

**Correct Answer:** B

**Section:** (none)

**Explanation**

**Explanation/Reference:**

Reference: <https://docs.vmware.com/en/Unified-Access-Gateway/3.3.1/com.vmware.uag-331-deploy-config.doc/GUID-C16913E1-7984-4072-B1E8-7EBAE385A831.html>

#### QUESTION 8

An administrator is trying to add a public iOS application by using the App Store Search option from Workspace ONE UEM. The application this administrator is looking for is not listed. What can be the problem?

- A. The Apple Push Notification Service (APNs) certificate is invalid.
- B. The application is not available in the selected country.
- C. The Apple Volume Purchase Program (VPP) sToken is expired.
- D. The application is free of charge.

**Correct Answer:** B

**Section:** (none)

**Explanation**

**Explanation/Reference:**

**QUESTION 9** Which Console location should be used to troubleshoot a device?

- A. Monitor > Reports and Analytics > Events > Logs
- B. Groups & Settings > Admin > Device Events
- C. Monitor > Reports and Analytics > Events > Device Events
- D. Groups & Settings > All Settings > Devices & Users > Advanced > Logs

**Correct Answer:** A

**Section:** (none)

**Explanation**

**Explanation/Reference:**

**QUESTION 10** A user has completed troubleshooting an on-premises Workspace ONE UEM. Which log level does the system need to be set back to?

- A. Severe
- B. Full Debug
- C. None
- D. Error

**Correct Answer:** D

**Section:** (none)

**Explanation**

**Explanation/Reference:**

**QUESTION 11** Which two actions should be taken when the Workspace ONE UEM console is rendering text and diagrams incorrectly? (Choose two.)

- A. Run lisreset.exe and check that the IIS service is running.
- B. Ensure that the Workspace ONE Device Services server has a newer version than the console server.
- C. Reboot the Workspace ONE SQL server.
- D. Check the Workspace ONE UEM DB version to match with the Console server.
- E. Stop all Workspace ONE services except the AirWatch Diagnostic Service.

**Correct Answer:** AD

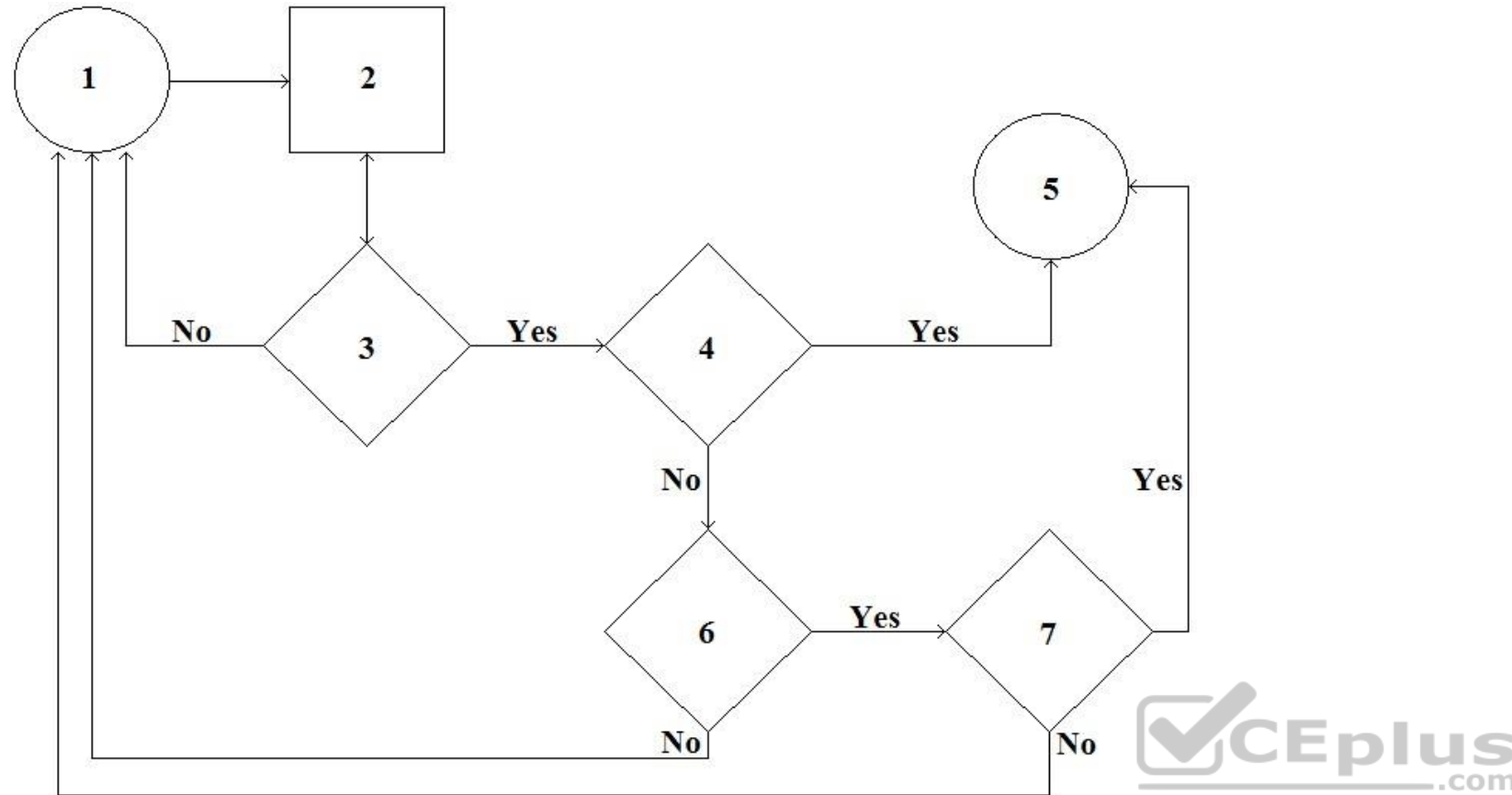
**Section:** (none)

**Explanation**

Explanation/Reference:

#### QUESTION 12

Given the following Workspace ONE component process flow for troubleshooting:



What is the correct flow description for the UEM Admin Console?

- A. 1 = Information gathering, 2 = Issue reproduction and data collection, 3 = Issue identified and diagnosed, 4 = Apply a fix. Issue resolved?, 5 = Issue resolution, 6 = Product defect, 7 = R&D version fix B.
- 1= Information gathering, 2 = Issue reproduction and data collection, 3 = Issue identified and diagnosed, 4 = Apply a fix. Issue resolved?, 5 = Issue resolution, 6 = R&D version fix, 7 = Product defect
- C. 1 = Apply a fix. Issue resolved?, 2 = Issue reproduction and data collection, 3 = Information gathering, 4 = Issue identified and diagnosed, 5 = Issue resolution. 6 = Product defect, 7 = R&D version fix
- D. 1 = Apply a fix. Issue resolved? 2 = Issue reproduction and data collection, 3 = Issue identified and diagnosed, 4 = Information gathering, 5 = Issue resolution, 6 = Product defect, 7 = R&D version fix

**Correct Answer: C**

**Section: (none)**

**Explanation**

Explanation/Reference:

#### QUESTION 13

An administrator has enabled Kerberos Constrained Delegation (KCD) on the SEG v2. If the administrator publishes a profile without a certificate payload and the user enters the password, everything works fine. When the user publishes the same profile with a certificate payload, the system is unable to connect and synchronize emails.

Which two troubleshooting steps need to be taken? (Choose two.)

- A. KCD is not supported on SEG v2.
- B. Verify if the service account is a member of the IIS user group on each CAS Exchange server.
- C. Verify that the Workspace UEM Console certificate is uploaded as a client certificate chain.
- D. Verify that port 88 is not blocked between the SEG and the Active Directory domain controller(s).
- E. Verify that the service account is set to the service type OWA.

**Correct Answer:** CD

**Section:** (none)


**Explanation**

**Explanation/Reference:**

Reference [https://docs.vmware.com/en/VMware-Workspace-ONE-UEM/1907/WS1\\_KCD\\_SEGV2\\_Doc.pdf](https://docs.vmware.com/en/VMware-Workspace-ONE-UEM/1907/WS1_KCD_SEGV2_Doc.pdf)

#### QUESTION 14

Given the following error:

Host	Status	Relay	Endpoint	Result
		No		The underlying connection was closed. An unexpected error occurred on a send.

What could be the issue?

- A. SSL portforwarding is not configured correctly.
- B. SSL v4 is configured in peer to peer mode.
- C. Routing issues on the content gateway the SSL traffic is not forwarded to the UAG.
- D. SSL introspection on the firewall interferes with the communication.

**Correct Answer:** A

**Section:** (none)

**Explanation**

**Explanation/Reference:**

**QUESTION 15** An administrator is trying to add a second Active Directory domain to an already configured directory integration. When the administrator tries to add a user from the newly added domain, the system cannot find the user. What are two possible causes? (Choose two.)

- A. The service account specified does not have any rights in the added domain.
- B. The second domain is not a member of Global Catalog.
- C. The newly added domain is not in the same forest.
- D. There is a trust relationship established between the domain.
- E. The administrator is using a service account with the Domain User Role assigned.

**Correct Answer:** AE

**Section:** (none)

**Explanation**

**Explanation/Reference:**

#### QUESTION 16

An administrator receives an "HTTP 401 - not authorized" error for the Email Notification Service (ENS). What can cause this issue?

- A. A wrong username is set on the ENS server.
- B. The Cloud Notification Service (CNS) is unable to authorize ENS.
- C. The Apple Push Notification Service (APNS) certificate is not valid.
- D. An ENS Service Account is not a member of the local admin group.

**Correct Answer:** B

**Section:** (none)

**Explanation**

**Explanation/Reference:**

Reference: <https://kb.vmware.com/s/article/50122031>

**QUESTION 17** A user wants to add devices to the Apple Device Enrollment Program (DEP) program.

What are two ways this can be done? (Choose two.)

- A. Devices are manually added with the Apple Configurator 2 program.
- B. Devices are manually added with the Apple DEP Onboarding program.
- C. Devices are added manually.
- D. Devices are automatically added if the DEP reseller ID is added or manually with the Apple Configurator 2 program.
- E. Devices are automatically added if MDM server details have been added.

**Correct Answer:** CE

**Section:** (none)

**Explanation**

**Explanation/Reference:**

Reference: <https://docs.vmware.com/en/VMware-Workspace-ONE-UEM/1810/Apple-DEP-Integration.pdf>

**QUESTION 18**

An administrator plans to deploy the Microsoft Store for Business Apps with the help of an on-premises Workspace ONE UEM environment.

What are the requirements for the offline license model?

- A. The requirements are already implemented in Workspace ONE UEM.
- B. Microsoft Azure Active Directory only
- C. Microsoft Azure Active Directory and Okta
- D. Microsoft Azure Active Directory and a secure file storage



**Correct Answer:** A

**Section:** (none)

**Explanation**

**Explanation/Reference:**

Reference: [https://docs.vmware.com/en/VMware-Workspace-ONE-UEM/9.7/vmware-airwatch-guides-97/GUID-AW97-Win\\_BSP\\_Deploy.html](https://docs.vmware.com/en/VMware-Workspace-ONE-UEM/9.7/vmware-airwatch-guides-97/GUID-AW97-Win_BSP_Deploy.html)

**QUESTION 19** An email profile is working, but some users are not receiving their emails. In the Workspace ONE UEM Console, an administrator sees that the profile is applied. On the SEG, the administrator notices that the device is not blocked. What two conditions can cause this issue? (Choose two.)

- A. The certificate of the secure email gateway is not valid.
- B. The user account is disabled.
- C. The device is unable to connect to SEG.
- D. The Activesync is not enabled for these users.
- E. The SEG cannot communicate with the mailbox server of these users.

**Correct Answer:** DE

**Section:** (none)

**Explanation**

**Explanation/Reference:**

**QUESTION 20** What are the issue severity definitions of Workspace ONE UEM when creating a support ticket?

- A. Very High, High, Medium, Low
- B. High, Medium, Low, Minor

- C. Critical, Major, Minor, Cosmetic
- D. Critical, High, Low, Cosmetic

**Correct Answer:** C

**Section:** (none)

**Explanation**

**Explanation/Reference:**

Reference: <https://www.vmware.com/support/policies/severity.html>

**QUESTION 21** An administrator has successfully configured the Google G-Suite integration with SEG v2 and password provision for all of the users. However, after a period of time, users receive a wrong password notification when trying to sync emails. What can cause this issue? (Choose two.)

- A. The Google Apps Password Sync (GAPS) is enabled.
- B. The Google Apps Directory Sync (GADS) is enabled.
- C. SEG is not listening to port 443.
- D. IP Whitelist is disabled in the Google Admin Console.
- E. The service account certificate is not valid and needs to be updated on the G-Suite admin interface and uploaded to Workspace ONE UEM.

**Correct Answer:** AB

**Section:** (none)

**Explanation**

**Explanation/Reference:**

Reference: <https://docs.vmware.com/en/VMware-Workspace-ONE-UEM/1811/VMware%20Workspace%20ONE%20UEM%20Google%20Sync%20Integration%20Guide=2=CDF%20PDF=en.pdf>

**QUESTION 22** On an SEGv2 where Kerberos Constrained Delegation (KCD) is enabled, sometimes users receive an “unable to authenticate” message. Which log file needs to be reviewed when troubleshooting the issue?

- A. U\_ex####.log
- B. AW.EAS.Web.Log
- C. AWCMSservice.log
- D. AirWatch.Kerberos.AuthService.log

**Correct Answer:** D

**Section:** (none)

**Explanation**

**Explanation/Reference:**

**QUESTION 23**

When enrolling a device into a newly set up Workspace ONE environment, a user receives the error message “Invalid User Credentials”. The user has verified that they are using the correct Active Directory credentials. The user has also successfully performed the “Test Connection” process to the Active Directory integration within the Workspace ONE UEM, but they still get the same error.

How should this problem be solved?

- A. Check the Device Enrollment restriction settings.
- B. Exit the Airplane mode on a mobile device.
- C. Enable Directory Authentication as the authentication mode.
- D. Enable the Workspace ONE REST API.

**Correct Answer:** A

**Section:** (none)

**Explanation**

**Explanation/Reference:**



**QUESTION 24**

An administrator has configured a per-app tunnel in a cascade deployment type. Between the network segments, the administrator has implemented a load balancer that is providing SSL-offloading.

None of the per-app tunnel configured apps are able to establish a tunneled connection.

What is the problem?

- A. Per-app tunnel cannot be deployed in cascade mode.
- B. Per-app tunnel does not support SSL offloading.
- C. The SSL offloading needs to be enabled between the two tunnel servers.
- D. Per-app tunnel does not support SSL offloading between the two relay -endpoint tunnel servers.

**Correct Answer:** B

**Section:** (none)

**Explanation**

**Explanation/Reference:**

Reference: [https://docs.vmware.com/en/VMware-Workspace-ONE-UEM/1907/Tunnel\\_Linux/GUID-CD6FE0E3-902E-4099-A0B1-DB43B1BD0F43.html](https://docs.vmware.com/en/VMware-Workspace-ONE-UEM/1907/Tunnel_Linux/GUID-CD6FE0E3-902E-4099-A0B1-DB43B1BD0F43.html)

**QUESTION 25**

Which three Active Directory user properties are required to be automatically imported to the Workspace ONE UEM console? (Choose three.)

- A. Distinguished Name
- B. Email Address
- C. User Principal Name
- D. Last Name
- E. Phone Number
- F. First Name

**Correct Answer:** ABC

**Section:** (none)

**Explanation**

**Explanation/Reference:**

**QUESTION 26** Which steps should be used to troubleshoot most issues in a Workspace ONE environment?

- A. Verify device connectivity and logon to the Workspace ONE UEM console.
- B. Collect data to identify the problem and apply it a Workspace ONE UEM update.
- C. Check the FQDN of the enrollment URL and try to connect to it through a Web browser.
- D. Gather information to try to reproduce the issue, then collect the data to diagnose the problem and apply a fix.

**Correct Answer:** A

**Section:** (none)

**Explanation**

**Explanation/Reference:**

Reference: [https://docs.vmware.com/en/VMware-Workspace-ONE-UEM/1908/WS1\\_Assist/GUID-AWT-ARM-TROUBLESHOOTING.html](https://docs.vmware.com/en/VMware-Workspace-ONE-UEM/1908/WS1_Assist/GUID-AWT-ARM-TROUBLESHOOTING.html)

**QUESTION 27** Which hierarchical level allows the administrator to add an admin repository of the type Network Share (SAML)?

- A. Local
- B. It is not possible.
- C. Site



D. Global

**Correct Answer:** A

**Section:** (none)

**Explanation**

**Explanation/Reference:**

#### QUESTION 28

Almost all users receive their emails on their mobile devices, but some users are not able to connect to Microsoft Exchange 2016 while on premises.

What can cause this issue?

- A. The user is a Workspace ONE UEM Console administrator and needs additional permissions on the Exchange server.
- B. The users are also members of the Exchange Organization admin group.
- C. The Apple Push Notification (APNS) certificate is expired and needs to update the APNS certificate.
- D. Secure email gateway services are not running a verify that the SEG server is not member of the Active Directory.

**Correct Answer:** A

**Section:** (none)

**Explanation**

**Explanation/Reference:**

#### QUESTION 29

A user is decommissioning older iOS devices that where enrolled using the Apple Device Enrollment Program (DEP) in the Workspace UEM environment.

Which tasks need to be executed?

- A. Delete the device from Workspace ONE UEM and it will be automatically disassociated from DEP.
- B. Perform an enterprise wipe, then Workspace ONE UEM will automatically disassociate the device from DEP.
- C. Disassociate the device in the DEP and from the MDM server, then Workspace ONE UEM syncs the device state automatically.
- D. Disassociate the device in the DEP and from the MDM server, then sync iOS devices manually in Workspace ONE UEM.

**Correct Answer:** C

**Section:** (none)

**Explanation**

**Explanation/Reference:**

#### QUESTION 30

An administrator has configured the Azure Active Directory configuration successfully. The Microsoft Store for Business Applications does not work.

What is most likely the cause?

- A. A Workspace ONE Enterprise Licensing is required.
- B. The Workspace ONE UEM license of the Microsoft Store for Business is missing.
- C. The Store for Business assets need to be configured at the same OG as the Azure AD services.
- D. The Active Directory Federation Services (ADFS) connection to Microsoft Azure Active Directory is broken.

**Correct Answer:** C

**Section:** (none)

**Explanation**

**Explanation/Reference:**

Reference: <https://docs.vmware.com/en/VMware-Workspace-ONE-UEM/1810/VMware-Workspace-ONE-UEM-Mobile-Application-Management/GUID-AWT-WIN-BSP-REQS.html>

**QUESTION 31** Which two statements are true about multiple Exchange Server versions in the same e-mail domain?  
(Choose two.)

- A. All of the Exchange Servers need to be updated to the same version of Windows Server.
- B. An administrator needs to install separate instances of Email Notification Services (ENS).
- C. The ENS server is able to complete all the subscriptions correctly.
- D. The ENS server functionality is interrupted.
- E. Each Exchange server needs to have at least one Apple Push Notification Service (APNS) Certificate.

**Correct Answer:** DE

**Section:** (none)

**Explanation**

**Explanation/Reference:**

**QUESTION 32** Where is the log level for the environment defined when using an on-premises Workspace ONE UEM?

- A. Global
- B. Local
- C. Organizational unit
- D. Device group

**Correct Answer:** B

**Section:** (none)

**Explanation**

**Explanation/Reference:**



**QUESTION 33**

An administrator has an on-premises Workspace ONE UEM which has a valid Apple Push Notification service (APNs) certificate. No iOS apps can be installed.

What could be the problem?

- A. The network ports 2195 and 2196 are blocked incoming.
- B. The network ports 5228-5230 are blocked outgoing.
- C. The network ports 2195 and 2196 are blocked outgoing.
- D. The network ports 5228-5230 are blocked incoming.

**Correct Answer:** C

**Section:** (none)

**Explanation**

**Explanation/Reference:**

**QUESTION 34**

An administrator is trying to enable AppWrapping for a special internal Android application, but the application fails to get wrapped. Other internal applications are wrapped without complications.

What could cause this failure?

- A. AppWrapping license is not assigned to the failed application.
- B. The maximum count of wrapped applications has been reached.
- C. AppWrapping works only with internal iOS applications.
- D. The internal app was built using Crosswalk on Android.

**Correct Answer:** A

**Section:** (none)

**Explanation**

**Explanation/Reference:**

Reference: <https://docs.vmware.com/en/VMware-Workspace-ONE-UEM/services/vmware-airwatch-app-wrapping-guide.pdf>

**QUESTION 35** Which subfolders can be found in the C:\AirWatch\CloudConnector directory?

- A. Settings1 and Settings2
- B. Bank1 and Bank2
- C. CC1 and CC2
- D. Conf1 and Conf2

**Correct Answer:** B

**Section:** (none)

**Explanation**

**Explanation/Reference:**

Reference: <https://digital-work.space/display/AIRWATCH/AirWatch+Logs>

**QUESTION 36** Drive C: is used as an installation drive in an on-premises Workspace ONE UEM environment.

What is the correct path to the log files?

- A. c:\airwatch\logs
- B. c:\airwatch\\*PRODUCTVERSION\*logs
- C. c:\vmware\airwatch\logs
- D. c:\airwatch.\*PRODUCTVERSION\*logs



**Correct Answer:** B

**Section:** (none)

**Explanation**

**Explanation/Reference:**

**QUESTION 37** A user has connected a mobile device to a customer's Wi-Fi and they experience problems with connectivity. How should this problem be remediated?

- A. Factory reset the device and re-enroll the device.
- B. Switch from Wi-Fi to 3G/LTE.
- C. Update the mobile OS on the device if possible.
- D. Delete the intelligent HUB app from the device.

**Correct Answer:** C

**Section:** (none)

**Explanation**

**Explanation/Reference:**

**QUESTION 38**

A user has configured the Apple Device Enrollment Program (DEP) integration within Workspace ONE UEM. When the user is testing the integration, everything works fine with the test device. But, new devices are not automatically enrolled.

What is most likely the issue?

- A. The DEP token is invalid.
- B. The default profile assigned for newly synced devices is set to None.
- C. The APNs certificate is invalid.
- D. The enrollment restriction for device DEP is set to Deny.

**Correct Answer:** A

**Section:** (none)

**Explanation**

**Explanation/Reference:**

Reference: <https://docs.vmware.com/en/VMware-Workspace-ONE-UEM/9.4/vmware-airwatch-guide-for-apple-device-enrollment-program.pdf>

#### **QUESTION 39**

An administrator has added Workspace ONE content and no user can access that content right now. What could be the issue?

- A. The download type is set to PUSH.
- B. The transfer method is set to ALL.
- C. The availability date is set to far in the past.
- D. The availability date is set to far in the future.

**Correct Answer:** C

**Section:** (none)

**Explanation**

**Explanation/Reference:**

#### **QUESTION 40**

A new organization policy requires multi-factor authentication for device enrollment, based on the network location of the device.

How should this be configured?

- A. Enable multi-factor as the authentication model.
- B. Multi-factor authentication is not available for device enrollment in Workspace ONE.
- C. Change the source of authentication for the Intelligent Hub to Identity Manager.
- D. Enable the multi-factor option in the user settings.

**Correct Answer:** C

**Section:** (none)

**Explanation**

**Explanation/Reference:**

**QUESTION 41** Which ports are required to the CA when using the Microsoft CA with DCOM?

- A. 135, 443, 389
- B. 443, 389, 49152-65535
- C. 135, 1025-5000, 49152-65535
- D. 389, 1025-5000, 49152-65535

**Correct Answer:** C

**Section:** (none)

**Explanation**

**Explanation/Reference:**

Reference: [https://docs.vmware.com/en/VMware-Workspace-ONE-UEM/1908/Certificate\\_Authority\\_Integrations/GUID-77BD9299-DD34-4896-BA85-CB21AA27F7AF.html](https://docs.vmware.com/en/VMware-Workspace-ONE-UEM/1908/Certificate_Authority_Integrations/GUID-77BD9299-DD34-4896-BA85-CB21AA27F7AF.html)

**QUESTION 42**

An administrator wants to deploy Apple Volume Purchase Program (VPP) applications but receives the Error Code 12046. What is most likely the issue?

- A. The administrative user account is locked.
- B. The sToken has expired and needs to be renewed.
- C. The Microsoft Azure AD integration is missing.
- D. The firewall is blocking the required ports for vmware.apple.com.

**Correct Answer:** B

**Section:** (none)

**Explanation**

**Explanation/Reference:**

**QUESTION 43** An administrator is struggling to distribute Win32 applications via Workspace ONE UEM.

What is most likely the issue?

- A. Only the following Win32 file types are supported: MSI, EXE, ZIP, BAT.
- B. Only the following Win32 file types are supported: MSI, EXE, ZIP, RAR, BAT.
- C. Only the following Win32 file types are supported: MSI, EXE, ZIP.
- D. The application was built with Microsoft Visual Studio.

**Correct Answer:** C

**Section:** (none)

**Explanation**

**Explanation/Reference:**

Reference: <https://techzone.vmware.com/deploying-win32-applications-vmware-workspace-one-operational-tutorial#1166187>

**QUESTION 44**

An administrator used the Getting Started Wizard to integrate the VMware Identity Manager. After a while, the administrator noticed that the integration was not working any more.

Which setting should be confirmed that it has not been disabled?

- A. SOAP API
- B. Enterprise Connectivity
- C. REST API
- D. vIDM

**Correct Answer:** D

**Section:** (none)

**Explanation**

**Explanation/Reference:**

Reference: <https://docs.vmware.com/en/VMware-vRealize-Suite-Lifecycle-Manager/8.0/com.vmware.vrsuite.lcm.80.doc/GUID-1C15C31B-D51F-4881-9CD1-EFB29C683EFF.html> **QUESTION 45** Users are able to list all of their repositories through the content gateway of the Unified Access Gateway (UAG). After an attempt to open a SMB repository, the users are required to provide a username and password. Which two can cause the issue? (Choose two.)

- A. Port 80 should be verified to make sure it is not blocked between the device and the content gateway.
- B. Smb.conf needs to be edited if there are multiple repository in the same domain.
- C. A Fully Qualified Domain Name (FQDN) needs to be added to the resolv.conf.
- D. Having multiple repository on the same domain is not supported.
- E. Content gateway does not support SMB repository.

**Correct Answer:** BC

**Section: (none)**

**Explanation**

**Explanation/Reference:**

Reference: <https://docs.vmware.com/en/Unified-Access-Gateway/3.5/uag-35-deploy-config-guide.pdf>

**QUESTION 46** An administrator is required to manually set up VMware Identity Manager in the Workspace ONE UEM.

Which type of REST API account is required? (Choose two.)

- A. Application Management User
- B. Console Administrator User
- C. Enrollment User
- D. Admin
- E. Full Access User

**Correct Answer: CD**

**Section: (none)**

**Explanation**

**Explanation/Reference:**

Reference: [https://docs.vmware.com/en/VMware-Workspace-ONE/services/intelligent-hub\\_IDM/GUID-E12AE819-273C-4E7A-8CE7-0870838BE67B.html](https://docs.vmware.com/en/VMware-Workspace-ONE/services/intelligent-hub_IDM/GUID-E12AE819-273C-4E7A-8CE7-0870838BE67B.html)

**QUESTION 47**

Workspace ONE UEM sends the following notification about a Windows 10 device “A Health Attestation sample has not been received from the device.”

What can cause this issue?

- A. The device does not support UEFI Secure Boot.
- B. Health attestation is only working with ENS.
- C. The device is using the wrong windows version.
- D. Device Health Attestation is not supported on Windows devices.

**Correct Answer: C**

**Section: (none)**

**Explanation**

**Explanation/Reference:**

**QUESTION 48**

An administrator has defined an email policy for hyperlink protection for emails that contain a hyperlink that can only be opened using the VMware browser. When the administrator tests the functionality, the hyperlink is still opened in the native browser of the device.

What causes this issue?

- A. Hyperlink protection is not supported on Office 365 Exchange Online.
- B. The administrator is using Exchange 2016 with SEG v2.
- C. Hyperlink protection is not working with Workspace ONE UEM.
- D. The administrator has deployed G-Suite with direct integration.

**Correct Answer: A**

**Section: (none)**

**Explanation**

**Explanation/Reference:**



**QUESTION 49** The profile status on multiple devices is not updating.

Where is information found about this issue?

- A. On the Console server: \Logs\Services\QueuingService.log
- B. On the Device Service server: \Logs\Services\Queuemanager.log
- C. On the Console server: \Logs\Services\Devicequeue.log
- D. On the Device Service server: \Logs\Services\InterrogatorQueueService.log

**Correct Answer:** D

**Section:** (none)

**Explanation**

**Explanation/Reference:**

**QUESTION 50** An administrator plans to implement a Peer-to-Peer distribution for Win32 apps.

What are the requirements?

- A. Enable the Peer-to-Peer server setting that is integrated in Workspace ONE UEM.
- B. Download and deploy the Peer-to-Peer Server Appliance.
- C. Deploy a Windows Server, SQL Database, and File Storage (on premises).
- D. Obtain the Workspace ONE Enterprise License.

**Correct Answer:** A

**Section:** (none)

**Explanation**



**Explanation/Reference:**

Reference: [https://docs.vmware.com/en/VMware-Workspace-ONE-UEM/9.6/vmware-airwatch-guides-96/GUID-AW96-P2P\\_Dist\\_Opt.html](https://docs.vmware.com/en/VMware-Workspace-ONE-UEM/9.6/vmware-airwatch-guides-96/GUID-AW96-P2P_Dist_Opt.html)

**QUESTION 51** How is content assigned to an Active Directory user?

- A. Assignment Group
- B. Smart Group
- C. User Group
- D. Active Directory Group membership

**Correct Answer:** C

**Section:** (none)

**Explanation**

**Explanation/Reference:**

Reference: <https://docs.vmware.com/en/VMware-Workspace-ONE-UEM/1811/WS1-UEM-DirectoryServices.pdf>

**QUESTION 52**

A user is using the Apple Device Enrollment Program (DEP) to onboard devices to Workspace ONE UEM. After a period of time, new devices are no longer enrolled using DEP.

What is most likely the problem?

- A. The Active Directory integration is broken.
- B. The DEP token is expired.
- C. The Device Exclusion Policy is set.
- D. The APNs certificate is expired.



**Correct Answer:** B

**Section:** (none)

**Explanation**

**Explanation/Reference:**

**QUESTION 53** Which command needs to be executed for the Certificate Authority (CA) to use subject alternative names in certificates?

- A. certutil -setreg policy\EditFlags + EDITF\_ATTRIBUTESUBJECTALTNAME2
- B. certutil -setattributes + SUBJECTALTERNATIVENAME
- C. certutil -setreg policy\EditFlags + SUBJECTALTERNATIVENAME
- D. certutil -setreg policy\EditFlags + EDITF\_ATTRIBUTESUBJECTALTNAME

**Correct Answer:** A

**Section:** (none)

**Explanation**

**Explanation/Reference:**

Reference: [https://docs.vmware.com/en/VMware-Workspace-ONE-UEM/9.7/vmware-airwatch-guides-97/GUID-AW97-Step2\\_ConfigMSCA.html](https://docs.vmware.com/en/VMware-Workspace-ONE-UEM/9.7/vmware-airwatch-guides-97/GUID-AW97-Step2_ConfigMSCA.html)

**QUESTION 54** In the Email Notification Service (ENS) log file, an administrator finds the following error message:

“Insufficient service users in domain to monitor mailbox ...”.

What causes this issue?

- A. The wrong Exchange server version is used.
- B. The certificate is not valid between ENS and EWS.
- C. Values between Exchange Web Service (EWS) and ENS are not matching.
- D. The administrator needs to open a VMware support case ticket because the support team needs to change values in the Cloud.

**Correct Answer:** C

**Section:** (none)

**Explanation**

**Explanation/Reference:**

Reference: <https://docs.vmware.com/en/VMware-Workspace-ONE-UEM/1811/WS1-Email-Notification-Service.pdf> (7)

**QUESTION 55**

Which two settings or keys are required to enable Email Notification Service for Cloud (ENS) in the Workspace ONE UEM Application Configuration section? (Choose two.)

- A. ENSTokenAPI
- B. AccountNotifyPush
- C. EWSAPI
- D. URL
- E. ENSLinkAddress

**Correct Answer:** BE

**Section:** (none)

**Explanation**

**Explanation/Reference:**

Reference: [https://docs.vmware.com/en/VMware-Workspace-ONE-UEM/1908/WS1\\_ENS2\\_Doc/GUID-AWT-ENABLE-ENS-V2-CLOUD.html](https://docs.vmware.com/en/VMware-Workspace-ONE-UEM/1908/WS1_ENS2_Doc/GUID-AWT-ENABLE-ENS-V2-CLOUD.html)

**QUESTION 56** Which three items are Device Event categories for filtering?  
(Choose three.)

- A. Administration: command, device, profiles
- B. Security; authentication, certificate pinning, custom
- C. Enrollment: authentication
- D. Enrollment: authentication, device
- E. Security: authentication, certificate pinning, compliance status
- F. Administration: command, device, profiles, application

**Correct Answer:** CDF

**Section:** (none)

**Explanation**

**Explanation/Reference:**

**QUESTION 57** An administrator is troubleshooting a Unified Access Gateway (UAG) via command line. The administrator has to restart the per-app VPN service.

Which command should the administrator use?

- A. Systemctl restart proxy
- B. Systemctl restart vpndaemon
- C. Systemctl restart vpnd
- D. Systemctl restart vmware-vpn

**Correct Answer:** C

**Section:** (none)

**Explanation**



**Explanation/Reference:**

Reference: <https://docs.vmware.com/en/VMware-Workspace-ONE-UEM/9.5/vmware-airwatch-guides-95/GUID-AW95-Linux-Troubleshooting.html>

**QUESTION 58** Which service should be running when facing assignment errors on an on-premises installation?

- A. AirWatch Group Integration service
- B. AirWatch Smart Group service
- C. AirWatch Smart Integration service
- D. AirWatch Smart Grouping service

**Correct Answer:** A

**Section:** (none)

**Explanation**

**Explanation/Reference:**

**QUESTION 59** What can cause Device Health Attestation to fail in Workspace ONE UEM for a Windows 10 Desktop device?

- A. BitLocker status on boot is disabled.
- B. Windows Update Service is not enabled.
- C. Windows 10 does not support Device Health Attestation.
- D. A required managed app is missing.

**Correct Answer:** A

**Section: (none)**

**Explanation**

**Explanation/Reference:**

**QUESTION 60** An administrator is troubleshooting a per-app tunnel for an application on an iOS device. The general app communication to the internal server is working; however, the Internet-based license server on it cannot be reached.

What is most likely the issue?

- A. The tunnel app is not installed.
- B. The network traffic rules need to be reviewed.
- C. The mobile device is in airplane mode.
- D. The app has no per-app tunnel payload configured.

**Correct Answer: B**

**Section: (none)**

**Explanation**

**Explanation/Reference:**

Reference: <https://docs.vmware.com/en/VMware-Workspace-ONE-UEM/9.6/vmware-airwatch-guides-96/GUID-AW96-NetworkTrafficRules.html>

