

98-364.80q

Number: 98-364
Passing Score: 800
Time Limit: 120 min

98-364



Website: <https://vceplus.com>

VCE to PDF Converter: <https://vceplus.com/vce-to-pdf/>

Facebook: <https://www.facebook.com/VCE.For.All.VN/>

Twitter : https://twitter.com/VCE_Plus

<https://vceplus.com/>

Database Fundamentals

Exam A

QUESTION 1

The terms "bitmap," "b-tree," and "hash" refer to which type of database structure?

<https://vceplus.com/>



<https://vceplus.com/>

- A. View
- B. Function
- C. Index
- D. Stored procedure
- E. Trigger

Correct Answer: C

Section: (none)

Explanation

Explanation/Reference:

QUESTION 2

One reason to add an index is to:

- A. Decrease storage space.
- B. Increase database security.
- C. Improve performance of select statements.
- D. Improve performance of insert statements.

Correct Answer: C

Section: (none)

Explanation



<https://vceplus.com/>

Explanation/Reference:

QUESTION 3

You have a table that contains the following data.

ProductID	ProductName	Color1	Color2	Color3
4545	Shirt	Blue	Green	Purple

You break the table into the following two tables.

ProductID	ProductName
4545	Shirt

ProductID	Color
4545	Blue
4545	Green
4545	Purple



This process is referred to as:

- A. defragmentation
- B. normalization
- C. fragmentation
- D. denormalization

Correct Answer: B

Section: (none)

Explanation

Explanation/Reference:

QUESTION 4

Which key uniquely identifies a row in a table?

- A. foreign
- B. primary
- C. local
- D. superkey

Correct Answer: B

Section: (none)

Explanation

Explanation/Reference:

QUESTION 5

Which statement creates a composite key?



- A. `CREATE TABLE Order
(OrderID INTEGER PRIMARY KEY,
OrderItemID INTEGER PRIMARY KEY)`
- B. `CREATE TABLE Order
(OrderID INTEGER,
OrderItemID INTEGER,
PRIMARY KEY OrderID,
PRIMARY KEY OrderItemID)`
- C. `CREATE TABLE Order
(OrderID INTEGER,
OrderItemID INTEGER,
PRIMARY KEY)`
- D. `CREATE TABLE Order
(OrderID INTEGER,
OrderItemID INTEGER,
PRIMARY KEY(OrderID, OrderItemID))`



- A. Option A
B. Option B
C. Option C
D. Option D

Correct Answer: D

Section: (none)

Explanation

Explanation/Reference:

QUESTION 6

In which situation do you need to perform a restore on a database?

- A. when data becomes corrupted in the database
- B. when you need to roll back a transaction
- C. when you encounter an error in your application
- D. when data needs to be deleted from the database

Correct Answer: A

Section: (none)

Explanation

Explanation/Reference:

QUESTION 7

Which command should you use to give a user permission to read the data in a table?

- A. ALLOW SELECT
- B. LET READ
- C. PERMIT READ
- D. GRANT SELECT



Correct Answer: D

Section: (none)

Explanation

Explanation/Reference:

QUESTION 8

You need to enable a new employee to authenticate to your database.
Which command should you use?

- A. ALLOW USER
- B. CREATE USER
- C. ADD USER
- D. INSERT USER
- E. ALTER USER

Correct Answer: B

Section: (none)

Explanation

Explanation/Reference:

QUESTION 9

You need to store product quantities, and you want to minimize the amount of storage space that is used. Which data type should you use?

- A. INTEGER
- B. DOUBLE
- C. COUNT
- D. FLOAT

Correct Answer: A

Section: (none)

Explanation

Explanation/Reference:



QUESTION 10

You have the following table definition:

```
CREATE TABLE Road
(RoadID INTEGER NOT NULL,
Distance INTEGER NOT NULL)
```

The Road table contains the following data:

RoadID	Distance
1234	22
1384	34

You execute the following statement:

```
INSERT INTO Road VALUES (1234, 36)
```

What is the result?

- A. an error stating that NULL values are not allowed
- B. a new row in the table
- C. an error stating that duplicate IDs are not allowed
- D. a syntax error

Correct Answer: B

Section: (none)

Explanation

Explanation/Reference:

QUESTION 11

You need to store product names that vary from three to 30 characters. You also need to minimize the amount of storage space that is used.

Which data type should you use?

- A. VARCHAR (3, 30)
- B. CHAR (3, 30)
- C. VARCHAR (30)
- D. CHAR (30)



Correct Answer: C

Section: (none)

Explanation

Explanation/Reference:

QUESTION 12

One reason to create a stored procedure is to:

- A. Improve performance.
- B. Minimize storage space.
- C. Bypass case sensitivity requirements.
- D. Give the user control of the query logic.

Correct Answer: A

Section: (none)

Explanation

Explanation/Reference:

QUESTION 13

In SQL, an insert statement is used to add a:

- A. User to a database.
- B. Row of data to a table.
- C. Table to a database.
- D. Column to a table definition.

Correct Answer: B

Section: (none)

Explanation

Explanation/Reference:



QUESTION 14

You have two tables. Each table has three rows.

How many rows will be included in the Cartesian product of these two tables?

- A. 0
- B. 3
- C. 6
- D. 9

Correct Answer: D

Section: (none)

Explanation

Explanation/Reference:

QUESTION 15

You are writing an SQL statement to retrieve rows from a table.

Which data manipulation language (DML) command should you use?

- A. READ
- B. SELECT
- C. OUTPUT
- D. GET

Correct Answer: B

Section: (none)

Explanation

Explanation/Reference:

QUESTION 16

The component that holds information for a single entry in a table is called a:

- A. Data type
- B. Row
- C. Column
- D. View

Correct Answer: B

Section: (none)

Explanation

Explanation/Reference:

QUESTION 17

You execute the following statement:

```
SELECT EmployeeID, FirstName, DepartmentName FROM  
Employee, Department
```

This type of operation is called a/an:

- A. Intersection
- B. Outer join
- C. Equi-join
- D. Cartesian product

Correct Answer: D

Section: (none)

Explanation

Explanation/Reference:

QUESTION 18

Which command should you use to add a column to an existing table?



<https://vceplus.com/>

- A. MODIFY
- B. ALTER
- C. UPDATE
- D. INSERT
- E. CHANGE

Correct Answer: B

Section: (none)

Explanation

<https://vceplus.com/>

Explanation/Reference:

QUESTION 19

You have the following table definition:

```
CREATE TABLE Product  
(ID INTEGER PRIMARY KEY,  
Name VARCHAR(20),  
Quantity INTEGER)
```

The Product table contains the following data.

ID	Name	Quantity
1234	Apples	33
2615	Oranges	0
3781	Pears	29
4589	Plums	

You execute the following statement:

```
SELECT Name FROM Product WHERE Quantity IS NOT NULL
```

How many rows are returned?

- A. 0
- B. 1
- C. 2
- D. 3
- E. 4

Correct Answer: D

Section: (none)

Explanation

Explanation/Reference:

QUESTION 20

You are writing a select statement to find every product whose name contains a specific character.

Which keyword should you use in your where clause?

- A. FIND
- B. BETWEEN
- C. INCLUDES
- D. LIKE

Correct Answer: D

Section: (none)

Explanation

Explanation/Reference:

QUESTION 21

You need to populate a table named EmployeeCopy with data from an existing table named Employee.

Which statement should you use?



A. `SELECT *`
`INTO EmployeeCopy`

`SELECT *`
`FROM Employee`

B. `INSERT *`
`FROM Employee`
`INTO EmployeeCopy`

C. `COPY * INTO Employee`
`SELECT *`
`FROM Employee`

D. `INSERT INTO EmployeeCopy`
`SELECT *`
`FROM Employee`



- A. Option A
- B. Option B
- C. Option C
- D. Option D

Correct Answer: D

Section: (none)

Explanation

Explanation/Reference:

QUESTION 22

You execute the following statement:

```
SELECT DepartmentName
FROM Department
WHERE DepartmentID =
    (SELECT DepartmentID
     FROM Employee
     WHERE EmployeeID = 1234)
```

This statement is an example of a/an:

- A. Subquery
- B. Union
- C. Outer join
- D. Cartesian product

Correct Answer: A

Section: (none)

Explanation

Explanation/Reference:



QUESTION 23

Which keyword would you use in a select statement to return rows that meet a specific condition?

- A. WHERE
- B. UNION
- C. ORDER BY
- D. FROM

Correct Answer: A

Section: (none)

Explanation

Explanation/Reference:

QUESTION 24

You have a table named Employee that includes the following columns:

EmployeeID
Smp1oyeeName

Which statement should you use to return the number of rows in the table?

- A.

```
SELECT *  
FROM Employee
```
- B.

```
SELECT SUM(*)  
FROM Employee
```
- C.

```
SELECT COUNT (rows)  
FROM Employee
```
- D.

```
SELECT COUNT (*)  
FROM Employee
```



- A. Option A
- B. Option B
- C. Option C
- D. Option D

Correct Answer: D

Section: (none)

Explanation

Explanation/Reference:

QUESTION 25

The Product table contains the following data.

ID	Name	Quantity
1234	Spoon	33
2615	Fork	17
3781	Plate	20
4589	Cup	51

You execute the following statement:

```
SELECT COUNT(*)  
FROM Product WHERE Quantity > 18
```

What is the value returned by this statement?

- A. 1
- B. 2
- C. 3
- D. 4

Correct Answer: C

Section: (none)

Explanation

Explanation/Reference:

QUESTION 26

Which command should you use to remove a table from a database?

- A. REMOVE TABLE
- B. UPDATE TABLE
- C. DROP TABLE
- D. DELETE TABLE

Correct Answer: C

Section: (none)

Explanation

Explanation/Reference:

QUESTION 27

You need to store the contact information for each student in your school database.
You should store each student's information in a:

- A. Stored procedure
- B. Function
- C. Row
- D. Variable

Correct Answer: C

Section: (none)

Explanation

Explanation/Reference:

QUESTION 28

Which category of SQL statements is used to add, remove, and modify database structures?

- A. Data access language (DAL)
- B. Data manipulation language (DML)
- C. Data control language (DCL)
- D. Data definition language (DDL)

Correct Answer: D

Section: (none)

Explanation

Explanation/Reference:

QUESTION 29

You have a Customer table and an Order table. You join the Customer table with the Order table by using the CustomerID column.

The results include:

- All customers and their orders
- Customers who have no orders

Which type of join do these results represent?

- A. Complete join
- B. Partial join
- C. Inner join
- D. Outer join

Correct Answer: D

Section: (none)

Explanation

Explanation/Reference:

QUESTION 30

You need to establish a set of permissions that you can routinely assign to new users.
What should you create?

- A. Resource
- B. Group
- C. List
- D. Role

Correct Answer: D

Section: (none)

Explanation

Explanation/Reference:

QUESTION 31

Which database term is used to describe the process of applying a backup to a damaged or corrupt database?

- A. Recover
- B. Restore
- C. Commit

D. Attach

Correct Answer: B

Section: (none)

Explanation

Explanation/Reference:

QUESTION 32

You need to disable User1's access to view the data in the Customer table.

Which statement should you use?

A. `REMOVE User1
FROM Customer`

B. `REMOVE SELECT ON Customer
FROM User1`

C. `REVOKE SELECT ON Customer
FROM User1`

D. `REVOKE User1
FROM Customer`

A. Option A

B. Option B

C. Option C

D. Option D

Correct Answer: C

Section: (none)

Explanation



Explanation/Reference:

QUESTION 33

Denormalization is performed in order to:

- A. Reduce redundancy.
- B. Eliminate repeating groups.
- C. Create smaller tables.
- D. Improve query performance.

Correct Answer: D

Section: (none)

Explanation

Explanation/Reference:

QUESTION 34

You have a table named Product that contains one million rows.

You need to search for product information in the Product table by using the product's unique ID.

What will make this type of search more efficient?

- A. A cursor
- B. A subquery
- C. A trigger
- D. An index

Correct Answer: D

Section: (none)

Explanation

Explanation/Reference:

QUESTION 35

You have a table named Product that contains the following data.

ProductID	ProductName	CategoryID
3296	Spoon	2222
1114	Chair	4444

The ProductID column is the primary key. The CategoryID column is a foreign key to a separate table named Category.

You execute the following statement:

```
INSERT INTO Product  
VALUES (3296, 'Table', 4444)
```

What is the result?

- A. a foreign key constraint violation
- B. a syntax error
- C. a new row in the Product table
- D. a primary key constraint violation
- E. a new row in the Category table

Correct Answer: D

Section: (none)

Explanation

Explanation/Reference:

QUESTION 36

Which two keys establish a relationship between two tables? (Choose two.)

- A. candidate
- B. foreign
- C. superkey
- D. local
- E. primary

Correct Answer: BE

Section: (none)

Explanation

Explanation/Reference:

QUESTION 37

You have a table named Customer. You need to add a new column named District.
Which statement should you use?

A. `MODIFY TABLE Customer ADD
(District INTEGER)`

B. `ALTER TABLE Customer MODIFY
(District INTEGER)`

C. `MODIFY TABLE Customer
(District INTEGER)`

D. `ALTER TABLE Customer ADD
(District INTEGER)`



A. Option A

B. Option B

C. Option C

D. Option D

Correct Answer: D

Section: (none)

Explanation

Explanation/Reference:

QUESTION 38

You need to remove a view named EmployeeView from your database.
Which statement should you use?

- A. DELETE VIEW EmployeeView
- B. DELETE EmployeeView
- C. DROP EmployeeView
- D. DROP VIEW EmployeeView

Correct Answer: D

Section: (none)

Explanation

Explanation/Reference:

QUESTION 39

You need to list the name and price of each product, sorted by price from highest to lowest. Which statement should you use?

- A.

```
SELECT Name, Price
FROM Product
ORDER BY Price DESC
```
- B.

```
SELECT Name, Price
FROM Product
ORDER BY Price ASC
```
- C.

```
SELECT Name, BOTTOM Price
FROM Product
```
- D.

```
SELECT Name, TOP Price
FROM Product
```


- A. Option A
- B. Option B
- C. Option C
- D. Option D

Correct Answer: A

Section: (none)

Explanation

Explanation/Reference:

QUESTION 40

You delete rows in a table named Order. The corresponding rows in the OrderItem table are automatically deleted. This process is an example of a/an:

- A. Inherited delete
- B. Cascade delete
- C. Functional delete
- D. Waterfall delete
- E. Domino delete



Correct Answer: B

Section: (none)

Explanation

Explanation/Reference:

QUESTION 41

You have a table named Employee that includes four columns.

You execute the following statement:

```
SELECT *  
FROM Employee
```

Which columns are returned?

- A. all columns

- B. only the last column
- C. only the first column
- D. only the first and last columns

Correct Answer: A

Section: (none)

Explanation

Explanation/Reference:

QUESTION 42

What defines the amount of storage space that is allocated to a value in a column?

- A. format
- B. key
- C. data type
- D. validator

Correct Answer: C

Section: (none)

Explanation

Explanation/Reference:

QUESTION 43

You are creating a table to store customer data. The AccountNumber column uses values that always consist of one letter and four digits. Which data type should you use for the AccountNumber column?

- A. CHAR
- B. BYTE
- C. DOUBLE
- D. SMALLINT

Correct Answer: A

Section: (none)

Explanation



Explanation/Reference:

QUESTION 44

You have a Department table and an Employee table in your database.

You need to ensure that an employee can be assigned to only an existing department.

What should you apply to the Employee table?

- A. A primary key
- B. An index
- C. A foreign key
- D. A unique constraint
- E. A data type

Correct Answer: C

Section: (none)

Explanation

Explanation/Reference:



QUESTION 45

You need to store the first name, last name, and student ID for 100 students.

This information will be stored in a table as:

- A. 100 items and three cells.
- B. 100 rows and three columns.
- C. three rows and 100 columns.
- D. three items and 100 cells.

Correct Answer: B

Section: (none)

Explanation

Explanation/Reference:

QUESTION 46

You assign User1 a set of permissions that include the WITH GRANT OPTION. The WITH GRANT OPTION enables User1 to:

- A. request a log of permission use.
- B. delegate permissions to other users.
- C. create new database users.
- D. view other users' permissions.

Correct Answer: C

Section: (none)

Explanation

Explanation/Reference:

QUESTION 47

Which type of index changes the order in which the data is stored in a table?

- A. non-sequential
- B. sequential
- C. non-clustered
- D. clustered

Correct Answer: A

Section: (none)

Explanation

Explanation/Reference:

QUESTION 48

Which statement should you use to remove a foreign key?

- A. ALTER TABLE
- B. DELETE TABLE
- C. DELETE FOREIGN KEY
- D. ALTER FOREIGN KEY

Correct Answer: A

Section: (none)

Explanation

Explanation/Reference:

QUESTION 49

First normal form requires that a database excludes:



- A. Foreign keys
- B. Composite keys
- C. Duplicate rows
- D. Repeating groups

Correct Answer: D

Section: (none)

Explanation

Explanation/Reference:

QUESTION 50

On which database structure does an insert statement operate?

- A. Role
- B. Trigger
- C. User



- D. Stored procedure
- E. Table

Correct Answer: E

Section: (none)

Explanation

Explanation/Reference:

QUESTION 51

You have a table of products with fields for ProductID, Name, and Price.

You need to write an UPDATE statement that sets the value in the InStock field to Yes for a specific ProductID.

Which clause should you use in your update statement?

- A. THAT
- B. WHERE
- C. GROUP BY
- D. HAVING



Correct Answer: B

Section: (none)

Explanation

Explanation/Reference:

QUESTION 52

You have the database table named Cars as defined below:

Type	Color	Origin
Sedan	Red	Japan
Truck	Red	USA
Minivan	Silver	Japan
Hatchback	Red	Japan
Compact	Black	Japan
SUV	Silver	Germany
Convertible	Black	USA
Hybrid	Black	Germany

You have the following Structured Query Language (SQL) statement:

```
SELECT *  
FROM Cars c  
WHERE c.Origin <> 'USA' AND  
c.Color <> 'Black'
```



How many rows are returned by the SQL statement?

- A. 4
- B. 5
- C. 6
- D. 7

Correct Answer: A

Section: (none)

Explanation

Explanation/Reference:

QUESTION 53

You have a database table named SongInformation as defined below:

Name	VARCHAR(255)
Singer	VARCHAR(255)
YearWritten	DATE
CDsSold	INT

You need to create a Structured Query Language (SQL) query to retrieve only the names of songs that sold more than 1000 compact discs (CDs).

Which query should you use?

- ☐ A. `SELECT Name
FROM SongInformation
WHERE CDsSold > 1000`
- ☐ B. `SELECT Name
FROM CDsSold
WHERE CDsSold > 1000`
- ☐ C. `SELECT *
FROM SongInformation
WHERE CDsSold = 1000`
- ☐ D. `SELECT *
FROM SongInformation`



- A. Option A
B. Option B
C. Option C
D. Option D

Correct Answer: A

Section: (none)

Explanation

Explanation/Reference:

QUESTION 54

You accept an IT internship at a local charity. The charity asks you to keep a record of its volunteers by using a database table named Volunteer.

The table has the following columns and rows:

Id	GivenName
1	Tia
2	Susana
3	Joey

When volunteer information changes, you must update the table.

You need to change Tia's name to Kimberly.

Which statement should you choose?

- ☐ A. `SET GivenName = 'Kimberly'`
`FROM Volunteer`
`WHERE GivenName = 'Tia'`
- ☐ B. `SET Volunteer`
`TO GivenName = 'Kimberly'`
`WHERE GivenName = 'Tia'`
- ☐ C. `UPDATE GivenName = 'Kimberly'`
`FROM Volunteer`
`WHERE GivenName = 'Tia'`
- ☐ D. `UPDATE Volunteer`
`SET GivenName = 'Kimberly'`
`WHERE GivenName = 'Tia'`

- A. Option A
B. Option B
C. Option C
D. Option D

Correct Answer: A

Section: (none)

Explanation

Explanation/Reference:

QUESTION 55

You need to combine the results of two queries into a single result that contains all of the rows from both queries.

Which Structured Query Language (SQL) statement should you use?

- A. TRUNCATE
- B. JOIN
- C. EXCEPT
- D. UNION

Correct Answer: D

Section: (none)

Explanation

Explanation/Reference:

QUESTION 56

This question requires that you evaluate the underlined text to determine if it is correct.

The CREATE TABLE command removes one or more table definitions and all data, indexes, triggers, constraints, and permission specifications for those tables.

Instructions: Review the underlined text. If it makes the statement correct, select "No change is needed." If the statement is incorrect, select the answer choice that makes the statement correct A. No change is needed

- B. DROP TABLE
- C. TRUNCATE TABLE
- D. ALTER TABLE

Correct Answer: B

Section: (none)

Explanation

Explanation/Reference:

QUESTION 57

You accept an IT internship at a local charity. The charity wants you to help them with compliance and auditing requirements.

You need to ensure that a column or combination of columns uniquely identifies each row of a table.

Which constraint should you define?

- A. Primary key
- B. Secondary key
- C. Foreign key
- D. Default key

Correct Answer: C

Section: (none)

Explanation

Explanation/Reference:

QUESTION 58

While attending college, you accept an IT internship at a local charity. The charity needs to report on data that is related and exists in two tables.

You need to establish a relationship between the data that is in the two tables.

Which constraint should you define?

- A. Foreign key
- B. Index key
- C. Link key
- D. Default key

Correct Answer: B

Section: (none)

Explanation

Explanation/Reference:

QUESTION 59

This question requires that you evaluate the underlined text to determine if it is correct.

In a database table, each column represents a unique record.

Instructions: Review the underlined text. If it makes the statement correct, select "No change is needed." If the statement is incorrect, select the answer choice that makes the statement correct

- A. No change is needed
- B. Table
- C. Index
- D. Row

Correct Answer: D

Section: (none)

Explanation

Explanation/Reference:

QUESTION 60

This question requires that you evaluate the underlined text to determine if it is correct.

Use the ALTER statement to add a new table in a database.

Instructions: Review the underlined text. If it makes the statement correct, select "No change is needed." If the statement is incorrect, select the answer choice that makes the statement correct.

- A. No change is needed
- B. UPDATE
- C. INSERT D. CREATE

Correct Answer: D

Section: (none)

Explanation

Explanation/Reference:

QUESTION 61

You need to rename a column in a database table.

Which data definition language (DDL) statement should you use?

- A. ALTER
- B. INSERT
- C. CREATE
- D. UPDATE

Correct Answer: A

Section: (none)

Explanation

Explanation/Reference:

QUESTION 62

This question requires that you evaluate the underlined text to determine if it is correct.

Use indexing to create, remove, or change database objects.

Instructions: Review the underlined text. If it makes the statement correct, select "No change is needed." If the statement is incorrect, select the answer choice that makes the statement correct.

- A. No change is needed.
- B. Data manipulation language (DML) statements
- C. Data definition language (DDL) statements
- D. A unique constraint

Correct Answer: C

Section: (none)

Explanation

Explanation/Reference:

QUESTION 63

You need to add rows to a database table.

Which Structured Query Language (SQL) keyword should you use?

- A. JOIN
- B. INSERT

- C. CREATE
- D. UPDATE

Correct Answer: A

Section: (none)

Explanation

Explanation/Reference:

QUESTION 64

You need to retrieve data from two related database tables based on a column that exists in both tables.

Which command should you use in a query?

- A. INTERSECT
- B. UNION
- C. JOIN
- D. TRUNCATE

Correct Answer: B

Section: (none)

Explanation

Explanation/Reference:



QUESTION 65

You have a database table that contains the following columns:



You must insert the following record into the table:

StreetAddress	City	State	PostalCode
1234 Main Street	Dallas	TX	75201

Which two Structured Query Language (SQL) statements can you use? (Choose two.)

- ☐ A. `INSERT INTO AddressInfo ('1234 Main Street','Dallas','TX','75201')`
`VALUES ([StreetAddress], [City], [State], [PostalCode])`
- ☐ B. `INSERT INTO AddressInfo ([StreetAddress], [City], [State], [PostalCode])`
`VALUES ('1234 Main Street','Dallas','TX','75201')`
- ☐ C. `INSERT INTO AddressInfo VALUES ('1234 Main Street','Dallas','TX','75201')`
- ☐ D. `UPDATE AddressInfo SET [StreetAddress]='1234 Main Street', [City]='Dallas',`
`[State]='TX', [PostalCode]='75201'`

- A. Option A
B. Option B
C. Option C
D. Option D

Correct Answer: BC

Section: (none)

Explanation

Explanation/Reference:

QUESTION 66

This question requires that you evaluate the underlined text to determine if it is correct.

The UNION keyword combines the results of two queries and returns only rows that appear in both result sets.

Instructions: Review the underlined text. If it makes the statement correct, select "No change is needed." If the statement is incorrect, select the answer choice that makes the statement correct

- A. No change is needed
B. INTERSECT

- C. ALL
- D. UNION

Correct Answer: B

Section: (none)

Explanation

Explanation/Reference:

QUESTION 67

You accept an IT internship at a local charity. The charity has two tables in their data model named Chapter and Language, as defined below:

Chapter			
ChapterId	City	Region	Country
1	Chicago	Illinois	USA
2	Los Angeles	California	USA
3	New York City	New York	USA
4	Toronto	Ontario	Canada

Language	
LanguageId	LanguageName
1	English
2	Spanish
3	French
4	German

You create a third table named ChapterLanguage to relate the Chapter table and the Language table.

You need to select columns from the Chapter and Language tables to create a composite primary key for the ChapterLanguage table.

Which two columns should you select? (Choose two.)

- A. ChapterId

- B. LanguageId
- C. Country
- D. Region
- E. City
- F. LanguageName

Correct Answer: AE

Section: (none)

Explanation

Explanation/Reference:

QUESTION 68

This question requires that you evaluate the underlined text to determine if it is correct.

You combine data from three tables into one table. The new table includes redundancy to optimize read performance.

The data in the new table has been denormalized.

Instructions: Review the underlined text. If it makes the statement correct, select "No change is needed." If the statement is incorrect, select the answer choice that makes the statement correct.

- A. No change is needed
- B. Normalized
- C. Truncated
- D. Indexed

Correct Answer: A

Section: (none)

Explanation

Explanation/Reference:

QUESTION 69

You need to delete a database table.

Which data definition language (DDL) keyword should you use?

- A. ALTER
- B. DELETE
- C. DROP
- D. TRUNCATE

Correct Answer: C

Section: (none)

Explanation

Explanation/Reference:

QUESTION 70

Your class project requires that you help a charity to create a website that registers volunteers.

The website must store the following data about the volunteers:

- Given name
- Surname
- Telephone number ▪
- Email address



You need to recommend a correct way to store the data.

What do you recommend?

- A. Create a table that contains columns that are named given name, surname, phone number, and email.
- B. Create a table that contains rows that are named given name, surname, phone number, and email.
- C. Create a view that contains columns that are named given name surname, phone number, and email.
- D. Create a view that contains rows that are named given name surname, phone number, and email

Correct Answer: A

Section: (none)

Explanation

Explanation/Reference:

QUESTION 71

This question requires that you evaluate the underlined text to determine if it is correct.

Truncate is a database term used to describe the process of applying a backup to a damaged or corrupt database.

Instructions: Review the underlined text. If it makes the statement correct, select "No change is needed." If the statement is incorrect, select the answer choice that makes the statement correct.

- A. Change is needed
- B. CommitC. Attach
- D. Restore

Correct Answer: D

Section: (none)

Explanation

Explanation/Reference:

QUESTION 72

This question requires that you evaluate the underlined text to determine if it is correct.

Use the ALLOW SELECT command to give a user permission to read the data in a table.

Instructions: Review the underlined text. If it makes the statement correct, select "No change is needed." If the statement is incorrect, select the answer choice that makes the statement correct

- A. No change is needed
- B. GRANT SELECT
- C. LET HEAD
- D. PERMIT READ

Correct Answer: B

Section: (none)

Explanation

Explanation/Reference:

QUESTION 73

You have two tables named Cars and Color as defined below. The two tables are related by ColorId.

Car type	Car model	ColorId
Sedan	2-door	2
Truck	4-door	NULL
Minivan	3-door	1

Color	ColorID
Red	1
Gold	2

You run the following SQL statement: select:

```
SELECT *  
FROM Cars  
LEFT OUTER JOIN Colors  
ON Cars.ColorID = Colors.ColorID
```

How many rows does the SQL statement return?

- A. 0
- B. 2
- C. 3
- D. 6

Correct Answer: C

Section: (none)

Explanation

Explanation/Reference:

QUESTION 74

You accept an IT internship at a local charity. The charity asks you to keep a record of its volunteers by using a database table named Volunteer.

When volunteers ask to be removed from mailing lists, the table must be updated.

You need to use a transaction to ensure that the database has data integrity and referential integrity.

Which statement should you use?

- ☐ A. `BEGIN TRANSACTION VolunteerDelete;
DELETE FROM Volunteer WHERE Id = 13;
COMMIT TRANSACTION VolunteerDelete;`
- ☐ B. `WHILE TRANSACTION VolunteerDelete;
DELETE FROM Volunteer WHERE Id = 13;
CATCH TRANSACTION VolunteerDelete;`
- ☐ C. `OPEN TRANSACTION VolunteerDelete;
DELETE FROM Volunteer WHERE Id = 13;
CLOSE TRANSACTION VolunteerDelete;`
- ☐ D. `UPDATE TRANSACTION VolunteerDelete;
DELETE FROM Volunteer WHERE Id = 13;
END TRANSACTION VolunteerDelete;`

- A. Option A
- B. Option B
- C. Option C
- D. Option D



Correct Answer: A

Section: (none)

Explanation

Explanation/Reference:

QUESTION 75

This question requires that you evaluate the underlined text to determine if it is correct.

Ports 20 and 21 are the default ports to secure a SQL Server.

Instructions: Review the underlined text. If it makes the statement correct, select "No change is needed." If the statement is incorrect, select the answer choice that makes the statement correct.

- A. No change is needed

- B. 1433 and 1434
- C. 411 and 412
- D. 67 and 68

Correct Answer: B

Section: (none)

Explanation

Explanation/Reference:

QUESTION 76

You are creating a database object named Student to store the following data:

ID	Name	Age
1	Rene	18
2	Tia	22
3	Oliver	25



Which syntax should you use to create the object?

- ☐ A. `CREATE TABLE Student (
ID INT,
Name VARCHAR(100),
Age INT)`
- ☐ B. `CREATE (
TABLE Student
ID INT,
Name VARCHAR(100),
Age INT)`
- ☐ C. `CREATE Student (
ID INT,
Name VARCHAR(100),
Age INT)`
- ☐ D. `CREATE TABLE (
ID INT,
Name VARCHAR(100),
Age INT)`



- A. Option A
B. Option B
C. Option C
D. Option D

Correct Answer: A

Section: (none)

Explanation

Explanation/Reference:

QUESTION 77

This question requires that you evaluate the underlined text to determine if it is correct.

First normal form requires that a database excludes repeating groups.

Instructions: Review the underlined text. If it makes the statement correct, select "No change is needed." If the statement is incorrect, select the answer choice that makes the statement correct.

- A. No change is needed.
- B. Composite keys
- C. Duplicate rows
- D. Foreign keys

Correct Answer: A

Section: (none)

Explanation

Explanation/Reference:

QUESTION 78

You have the following SQL query

```
SELECT * FROM dbo.ProAthlete WHERE Salary > 500000
```

The query takes too much time to return data.

You need to improve the performance of the query.

Which item should you add to the Salary column?

- A. Non-null constraint
- B. Default constraint
- C. Index
- D. Foreign key

Correct Answer: D

Section: (none)

Explanation

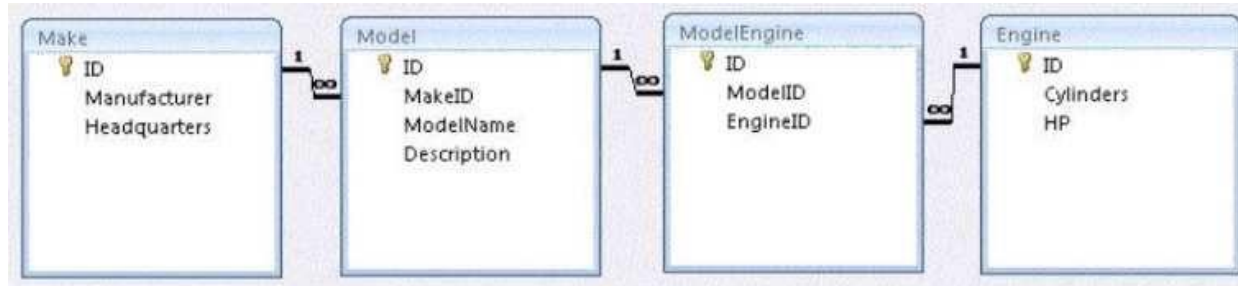
Explanation/Reference:

QUESTION 79



You work for a small auto trading company. You need to remove a car from the company database.

Information about the car is stored in the following tables.



All of the car's parts are custom made, so they each have a row in every table. Cascading deletes are not enabled but referential integrity is.

From which table must you first make your deletion?

- A. Make
- B. Model
- C. Engine
- D. ModelEngine



Correct Answer: A

Section: (none)

Explanation

Explanation/Reference:

QUESTION 80

This question requires that you evaluate the underlined text to determine if it is correct.

You have a table that contains information about all students in your school.

You use the INSERT SQL keyword to change a student's given name in the table.

Instructions: Review the underlined text. If it makes the statement correct, select "No change is needed." If the statement is incorrect, select the answer choice that makes the statement correct.

Answer: B

- A. CHANGE
- B. UPDATE
- C. No change needed
- D. SELECT

Correct Answer: B

Section: (none)

Explanation

Explanation/Reference:



<https://vceplus.com/>

<https://vceplus.com/>