

## AZ-104

Number: AZ-104  
Passing Score: 800  
Time Limit: 120 min  
File Version: 1

AZ-104



**Website:** <https://vceplus.com>

**VCE to PDF Converter:** <https://vceplus.com/vce-to-pdf/>

**Facebook:** <https://www.facebook.com/VCE.For.All.VN/>

**Twitter :** [https://twitter.com/VCE\\_Plus](https://twitter.com/VCE_Plus)

<https://vceplus.com/>

## Manage Azure identities and governance

### Question Set 1

#### QUESTION 1

**Note:** This question is part of a series of questions that present the same scenario. Each question in the series contains a unique solution that might meet the stated goals. Some question sets might have more than one correct solution, while others might not have a correct solution.

After you answer a question in this section, you will NOT be able to return to it. As a result, these questions will not appear in the review screen.

You have an Azure subscription that contains the following users in an Azure Active Directory tenant named contoso.onmicrosoft.com:

Name	Role	Scope
User1	Global administrator	Azure Active Directory
User2	Global administrator	Azure Active Directory
User3	User administrator	Azure Active Directory
User4	Owner	Azure Subscription

User1 creates a new Azure Active Directory tenant named external.contoso.onmicrosoft.com.

You need to create new user accounts in external.contoso.onmicrosoft.com.

Solution: You instruct User2 to create the user accounts.

Does that meet the goal?



<https://vceplus.com/>

A. Yes

B. No

**Correct Answer:** A

**Section:** (none)

**Explanation**

**Explanation/Reference:**

Explanation:

Only a global administrator can add users to this tenant.

Reference: <https://docs.microsoft.com/en-us/azure/devops/organizations/accounts/add-users-to-azure-ad>

## QUESTION 2

**Note:** This question is part of a series of questions that present the same scenario. Each question in the series contains a unique solution that might meet the stated goals. Some question sets might have more than one correct solution, while others might not have a correct solution.

**After you answer a question in this section, you will NOT be able to return to it. As a result, these questions will not appear in the review screen.**

You have an Azure subscription that contains the following users in an Azure Active Directory tenant named contoso.onmicrosoft.com:

Name	Role	Scope
User1	Global administrator	Azure Active Directory
User2	Global administrator	Azure Active Directory
User3	User administrator	Azure Active Directory
User4	Owner	Azure Subscription

User1 creates a new Azure Active Directory tenant named external.contoso.onmicrosoft.com.

You need to create new user accounts in external.contoso.onmicrosoft.com.

Solution: You instruct User4 to create the user accounts.

Does that meet the goal?

A. Yes

B. No

**Correct Answer:** B

**Section:** (none)

**Explanation**

**Explanation/Reference:**

Explanation:

Only a global administrator can add users to this tenant.

Reference: <https://docs.microsoft.com/en-us/azure/devops/organizations/accounts/add-users-to-azure-ad>

### QUESTION 3

**Note:** This question is part of a series of questions that present the same scenario. Each question in the series contains a unique solution that might meet the stated goals. Some question sets might have more than one correct solution, while others might not have a correct solution.

**After you answer a question in this section, you will NOT be able to return to it. As a result, these questions will not appear in the review screen.**

You have an Azure subscription that contains the following users in an Azure Active Directory tenant named contoso.onmicrosoft.com:

Name	Role	Scope
User1	Global administrator	Azure Active Directory
User2	Global administrator	Azure Active Directory
User3	User administrator	Azure Active Directory
User4	Owner	Azure Subscription

User1 creates a new Azure Active Directory tenant named external.contoso.onmicrosoft.com.

You need to create new user accounts in external.contoso.onmicrosoft.com.

Solution: You instruct User3 to create the user accounts.

Does that meet the goal?

A. Yes

B. No

**Correct Answer:** B

**Section:** (none)

**Explanation**

**Explanation/Reference:**

Explanation:

Only a global administrator can add users to this tenant.

Reference: <https://docs.microsoft.com/en-us/azure/devops/organizations/accounts/add-users-to-azure-ad>

#### **QUESTION 4**

You have an Azure subscription that contains an Azure Active Directory (Azure AD) tenant named contoso.com and an Azure Kubernetes Service (AKS) cluster named AKS1.

An administrator reports that she is unable to grant access to AKS1 to the users in contoso.com.

You need to ensure that access to AKS1 can be granted to the contoso.com users.

What should you do first?

- A. From contoso.com, modify the Organization relationships settings.
- B. From contoso.com, create an OAuth 2.0 authorization endpoint.
- C. Recreate AKS1.
- D. From AKS1, create a namespace.

**Correct Answer:** B

**Section:** (none)

**Explanation**

**Explanation/Reference:**

Reference: <https://kubernetes.io/docs/reference/access-authn-authz/authentication/>

#### **QUESTION 5**

You have a Microsoft 365 tenant and an Azure Active Directory (Azure AD) tenant named contoso.com.

You plan to grant three users named User1, User2, and User3 access to a temporary Microsoft SharePoint document library named Library1.

You need to create groups for the users. The solution must ensure that the groups are deleted automatically after 180 days.

Which two groups should you create? Each correct answer presents a complete solution.

**NOTE:** Each correct selection is worth one point.

- A. an Office 365 group that uses the Assigned membership type
- B. a Security group that uses the Assigned membership type
- C. an Office 365 group that uses the Dynamic User membership type
- D. a Security group that uses the Dynamic User membership type
- E. a Security group that uses the Dynamic Device membership type

**Correct Answer:** AC

**Section:** (none)

**Explanation**

**Explanation/Reference:**

Explanation:

You can set expiration policy only for Office 365 groups in Azure Active Directory (Azure AD).

Note: With the increase in usage of Office 365 Groups, administrators and users need a way to clean up unused groups. Expiration policies can help remove inactive groups from the system and make things cleaner.

When a group expires, all of its associated services (the mailbox, Planner, SharePoint site, etc.) are also deleted.

You can set up a rule for dynamic membership on security groups or Office 365 groups.

Incorrect Answers:

B, D, E: You can set expiration policy only for Office 365 groups in Azure Active Directory (Azure AD).

Reference: <https://docs.microsoft.com/en-us/office365/admin/create-groups/office-365-groups-expiration-policy?view=o365-worldwide>

## QUESTION 6

You have an Azure policy as shown in the following exhibit:

#### SCOPE

\* Scope ([Learn more about setting the scope](#))

Subscription 1

#### Exclusions

Subscription 1/ContosoRG1

#### BASICS

\* Policy definition

Not allowed resource types


\* Assignment name ⓘ

Not allowed resource types

#### Assignment ID

/subscriptions/5eb8d0b6-ce3b-4ce0-a631-9f5321bedabb/providers/Microsoft.Authorization/policyAssignments/0e6fb866bf854f54acc2a9

#### Description



#### Assigned by

admin1@contoso.com

#### PARAMETERS

\* Not allowed resource types ⓘ

Microsoft.Sql/servers

What is the effect of the policy?

- A. You are prevented from creating Azure SQL servers anywhere in Subscription 1.
- B. You can create Azure SQL servers in ContosoRG1 only.
- C. You are prevented from creating Azure SQL Servers in ContosoRG1 only.
- D. You can create Azure SQL servers in any resource group within Subscription 1.

**Correct Answer: B**

**Section: (none)**

**Explanation**

**Explanation/Reference:**

Explanation:

You are prevented from creating Azure SQL servers anywhere in Subscription 1 with the exception of ContosoRG1

#### **QUESTION 7**

You have an Azure subscription named AZPT1 that contains the resources shown in the following table:

Name	Type
storage1	Azure Storage account
VNET1	Virtual network
VM1	Azure virtual machine
VM1Managed	Managed disk for VM1
RVAULT1	Recovery Services vault for the site recovery of VM1

You create a new Azure subscription named AZPT2.

You need to identify which resources can be moved to AZPT2.

Which resources should you identify?

- A. VM1, storage1, VNET1, and VM1Managed only
- B. VM1 and VM1Managed only
- C. VM1, storage1, VNET1, VM1Managed, and RVAULT1
- D. RVAULT1 only

**Correct Answer: C**

**Section: (none)**

**Explanation**

**Explanation/Reference:**

Explanation:

You can move a VM and its associated resources to a different subscription by using the Azure portal.

You can now move an Azure Recovery Service (ASR) Vault to either a new resource group within the current subscription or to a new subscription.



Reference: <https://docs.microsoft.com/en-us/azure/azure-resource-manager/management/move-resource-group-and-subscription> <https://docs.microsoft.com/en-us/azure/key-vault/general/keyvault-move-subscription>

### QUESTION 8

You recently created a new Azure subscription that contains a user named Admin1.

Admin1 attempts to deploy an Azure Marketplace resource by using an Azure Resource Manager template. Admin1 deploys the template by using Azure PowerShell and receives the following error message: "User failed validation to purchase resources. Error message: "Legal terms have not been accepted for this item on this subscription. To accept legal terms, please go to the Azure portal (<http://go.microsoft.com/fwlink/?LinkId=534873>) and configure programmatic deployment for the Marketplace item or create it there for the first time."

You need to ensure that Admin1 can deploy the Marketplace resource successfully.

What should you do?

- A. From Azure PowerShell, run the `Set-AzApiManagementSubscription` cmdlet
- B. From the Azure portal, register the Microsoft.Marketplace resource provider
- C. From Azure PowerShell, run the `Set-AzMarketplaceTerms` cmdlet
- D. From the Azure portal, assign the Billing administrator role to Admin1

**Correct Answer: C**

**Section: (none)**

**Explanation**

**Explanation/Reference:**

Reference: <https://docs.microsoft.com/en-us/powershell/module/az.marketplaceordering/set-azmarketplaceterms?view=azps-4.1.0>

### QUESTION 9

You have an Azure Active Directory (Azure AD) tenant that contains 5,000 user accounts.

You create a new user account named AdminUser1.

You need to assign the User administrator administrative role to AdminUser1.

What should you do from the user account properties?

- A. From the Licenses blade, assign a new license

- B. From the Directory role blade, modify the directory role
- C. From the Groups blade, invite the user account to a new group

**Correct Answer:** B

**Section:** (none)

**Explanation**

**Explanation/Reference:**

Explanation:

Assign a role to a user

1. Sign in to the Azure portal with an account that's a global admin or privileged role admin for the directory.
2. Select Azure Active Directory, select Users, and then select a specific user from the list.
3. For the selected user, select Directory role, select Add role, and then pick the appropriate admin roles from the Directory roles list, such as Conditional access administrator.
4. Press Select to save.

Reference:

<https://docs.microsoft.com/en-us/azure/active-directory/fundamentals/active-directory-users-assign-role-azure-portal>

#### **QUESTION 10**

You have an Azure Active Directory (Azure AD) tenant named contoso.onmicrosoft.com that contains 100 user accounts.

You purchase 10 Azure AD Premium P2 licenses for the tenant.

You need to ensure that 10 users can use all the Azure AD Premium features.

What should you do?

- A. From the Licenses blade of Azure AD, assign a license
- B. From the Groups blade of each user, invite the users to a group
- C. From the Azure AD domain, add an enterprise application
- D. From the Directory role blade of each user, modify the directory role

**Correct Answer:** A

**Section:** (none)

**Explanation**

**Explanation/Reference:**

Reference:

<https://docs.microsoft.com/en-us/azure/active-directory/fundamentals/license-users-groups>

### QUESTION 11

You have an Azure subscription named Subscription1 and an on-premises deployment of Microsoft System Center Service Manager.

Subscription1 contains a virtual machine named VM1.

You need to ensure that an alert is set in Service Manager when the amount of available memory on VM1 is below 10 percent.

What should you do first?

- A. Create an automation runbook
- B. Deploy a function app
- C. Deploy the IT Service Management Connector (ITSM)
- D. Create a notification

**Correct Answer: C**

**Section: (none)**

**Explanation**

**Explanation/Reference:**

Explanation:

The IT Service Management Connector (ITSMC) allows you to connect Azure and a supported IT Service Management (ITSM) product/service, such as the Microsoft System Center Service Manager.

With ITSMC, you can create work items in ITSM tool, based on your Azure alerts (metric alerts, Activity Log alerts and Log Analytics alerts).

Reference:

<https://docs.microsoft.com/en-us/azure/azure-monitor/platform/itsmc-overview>

### QUESTION 12

You sign up for Azure Active Directory (Azure AD) Premium.

You need to add a user named admin1@contoso.com as an administrator on all the computers that will be joined to the Azure AD domain.

What should you configure in Azure AD?

- A. Device settings from the Devices blade



- B. Providers from the MFA Server blade
- C. User settings from the Users blade
- D. General settings from the Groups blade

**Correct Answer:** A

**Section:** (none)

**Explanation**

**Explanation/Reference:**

Explanation:

When you connect a Windows device with Azure AD using an Azure AD join, Azure AD adds the following security principles to the local administrators group on the device:

- The Azure AD global administrator role
- The Azure AD device administrator role ▪

The user performing the Azure AD join

In the Azure portal, you can manage the device administrator role on the Devices page. To open the Devices page:

1. Sign in to your Azure portal as a global administrator or device administrator.
2. On the left navbar, click Azure Active Directory.
3. In the Manage section, click Devices.
4. On the Devices page, click Device settings.
5. To modify the device administrator role, configure Additional local administrators on Azure AD joined devices.

Reference:

<https://docs.microsoft.com/en-us/azure/active-directory/devices/assign-local-admin>

### QUESTION 13

You have an Azure subscription that contains a resource group named RG26.

RG26 is set to the West Europe location and is used to create temporary resources for a project. RG26 contains the resources shown in the following table.

Name	Type	Location
VM1	Virtual machine	North Europe
RGV1	Recovery Services vault	North Europe
SQLD01	Azure SQL database	North Europe
AZSQL01	Azure SQL database server	North Europe
sa001	Storage account	West Europe

SQLDB01 is backed up to RGV1.

When the project is complete, you attempt to delete RG26 from the Azure portal. The deletion fails.

You need to delete RG26.

What should you do first?

- A. Delete VM1
- B. Stop VM1
- C. Stop the backup of SQLDB01
- D. Delete sa001



**Correct Answer:** C

**Section:** (none)

**Explanation**

**Explanation/Reference:**

#### QUESTION 14

You have an Azure subscription named Subscription1 that contains a virtual network named VNet1. VNet1 is in a resource group named RG1.

Subscription1 has a user named User1. User1 has the following roles:

- Reader
- Security Admin
- Security Reader

You need to ensure that User1 can assign the Reader role for VNet1 to other users.

What should you do?

- A. Remove User 1 from the Security Reader role for Subscription1. Assign User1 the Contributor role for RG1.
- B. Assign User1 the Owner role for VNet1.
- C. Remove User1 from the Security Reader and Reader roles for Subscription1.
- D. Assign User1 the Network Contributor role for RG1.

**Correct Answer:** B

**Section:** (none)

**Explanation**

**Explanation/Reference:**

Explanation:

Has full access to all resources including the right to delegate access to others.

Reference:

<https://docs.microsoft.com/en-us/azure/role-based-access-control/overview>

#### QUESTION 15

You have an Azure Active Directory (Azure AD) tenant named contosocloud.onmicrosoft.com.

Your company has a public DNS zone for contoso.com.

You add contoso.com as a custom domain name to Azure AD.

You need to ensure that Azure can verify the domain name.

Which type of DNS record should you create?

- A. MX
- B. NSEC
- C. SRV
- D. NSEC3

**Correct Answer:** A

**Section:** (none)

**Explanation**

**Explanation/Reference:**

Reference: <https://docs.microsoft.com/en-us/azure/dns/dns-web-sites-custom-domain>

**QUESTION 16**

**Note:** This question is part of a series of questions that present the same scenario. Each question in the series contains a unique solution that might meet the stated goals. Some question sets might have more than one correct solution, while others might not have a correct solution.

**After you answer a question in this section, you will NOT be able to return to it. As a result, these questions will not appear in the review screen.**

You have an Azure Directory (Azure AD) tenant named Adatum and an Azure Subscription named Subscription1. Adatum contains a group named Developers. Subscription1 contains a resource group named Dev.

You need to provide the Developers group with the ability to create Azure logic apps in the Dev resource group.

Solution: On Subscription1, you assign the DevTest Labs User role to the Developers group.

Does this meet the goal?

- A. Yes
- B. No



**Correct Answer: B**

**Section: (none)**

**Explanation**

**Explanation/Reference:**

Explanation:

DevTest Labs User role only lets you connect, start, restart, and shutdown virtual machines in your Azure DevTest Labs.

The Logic App Contributor role lets you manage logic app, but not access to them. It provides access to view, edit, and update a logic app.

Reference: <https://docs.microsoft.com/en-us/azure/role-based-access-control/built-in-roles> <https://docs.microsoft.com/en-us/azure/logic-apps/logic-apps-securing-a-logic-app>

**QUESTION 17**

**Note:** This question is part of a series of questions that present the same scenario. Each question in the series contains a unique solution that might meet the stated goals. Some question sets might have more than one correct solution, while others might not have a correct solution.

**After you answer a question in this section, you will NOT be able to return to it. As a result, these questions will not appear in the review screen.**

You have an Azure Directory (Azure AD) tenant named Adatum and an Azure Subscription named Subscription1. Adatum contains a group named Developers. Subscription1 contains a resource group named Dev.

You need to provide the Developers group with the ability to create Azure logic apps in the Dev resource group.

Solution: On Subscription1, you assign the Logic App Operator role to the Developers group.

Does this meet the goal?

- A. Yes
- B. No

**Correct Answer: B**

**Section: (none)**

**Explanation**

**Explanation/Reference:**

Explanation:

You would need the Logic App Contributor role.

Reference: <https://docs.microsoft.com/en-us/azure/role-based-access-control/built-in-roles> <https://docs.microsoft.com/en-us/azure/logic-apps/logic-apps-securing-a-logic-app>

#### **QUESTION 18**

**Note: This question is part of a series of questions that present the same scenario. Each question in the series contains a unique solution that might meet the stated goals. Some question sets might have more than one correct solution, while others might not have a correct solution.**

**After you answer a question in this section, you will NOT be able to return to it. As a result, these questions will not appear in the review screen.**

You have an Azure Directory (Azure AD) tenant named Adatum and an Azure Subscription named Subscription1. Adatum contains a group named Developers. Subscription1 contains a resource group named Dev.

You need to provide the Developers group with the ability to create Azure logic apps in the Dev resource group.

Solution: On Dev, you assign the Contributor role to the Developers group.

Does this meet the goal?

- A. Yes





<https://vceplus.com/>

B. No

**Correct Answer:** A

**Section:** (none)

**Explanation**

**Explanation/Reference:**

Explanation:

The Contributor role can manage all resources (and add resources) in a Resource Group.

#### QUESTION 19

You have an Azure subscription named Subscription1 that contains an Azure Log Analytics workspace named Workspace1.

You need to view the error from a table named Event.

Which query should you run in Workspace1?

A. `Get-Event Event | where {$_. EventType == "error"}`

B. `Event | search "error"`

C. `select * from Event where EnventType == "error"`

D. `Event | where EventType is "error"`

**Correct Answer:** B

**Section:** (none)

**Explanation**

**Explanation/Reference:**

Reference: <https://docs.microsoft.com/en-us/azure/azure-monitor/log-query/search-queries> <https://docs.microsoft.com/en-us/azure/azure-monitor/log-query/get-started-portal>

**QUESTION 20**

You have an Azure subscription named Subscription1. Subscription1 contains the resource groups in the following table.

Name	Azure region	Policy
RG1	West Europe	Policy1
RG2	North Europe	Policy2
RG3	France Central	Policy3

RG1 has a web app named WebApp1. WebApp1 is located in West Europe.

You move WebApp1 to RG2.

What is the effect of the move?

- A. The App Service plan for WebApp1 remains in West Europe. Policy2 applies to WebApp1.
- B. The App Service plan for WebApp1 moves to North Europe. Policy2 applies to WebApp1.
- C. The App Service plan for WebApp1 remains in West Europe. Policy1 applies to WebApp1.
- D. The App Service plan for WebApp1 moves to North Europe. Policy1 applies to WebApp1.

**Correct Answer:** A

**Section:** (none)

**Explanation**

**Explanation/Reference:**

Explanation:

You can move an app to another App Service plan, as long as the source plan and the target plan are in the same resource group and geographical region. The region in which your app runs is the region of the App Service plan it's in. However, you cannot change an App Service plan's region.

Reference:

<https://docs.microsoft.com/en-us/azure/app-service/app-service-plan-manage>

**QUESTION 21**

You have an Azure subscription.

Users access the resources in the subscription from either home or from customer sites. From home, users must establish a point-to-site VPN to access the Azure resources. The users on the customer sites access the Azure resources by using site-to-site VPNs.

You have a line-of-business-app named App1 that runs on several Azure virtual machine. The virtual machines run Windows Server 2016.

You need to ensure that the connections to App1 are spread across all the virtual machines.

What are two possible Azure services that you can use? Each correct answer presents a complete solution.

**NOTE:** Each correct selection is worth one point.

- A. an internal load balancer
- B. a public load balancer
- C. an Azure Content Delivery Network (CDN)
- D. Traffic Manager
- E. an Azure Application Gateway

**Correct Answer:** A

**Section:** (none)

**Explanation**

**Explanation/Reference:**

Explanation:

Line-of-business apps are custom apps that are used by internal staff members.

## QUESTION 22

You have an Azure subscription.

You have 100 Azure virtual machines.

You need to quickly identify underutilized virtual machines that can have their service tier changed to a less expensive offering.

Which blade should you use?

- A. Monitor
- B. Advisor
- C. Metrics
- D. Customer insights

**Correct Answer:** B

**Section:** (none)

**Explanation**

**Explanation/Reference:**

Explanation:

Advisor helps you optimize and reduce your overall Azure spend by identifying idle and underutilized resources. You can get cost recommendations from the Cost tab on the Advisor dashboard.

Reference:

<https://docs.microsoft.com/en-us/azure/advisor/advisor-cost-recommendations>

## Implement and manage storage

### Question Set 1

#### QUESTION 1

You have an Azure subscription that contains the storage accounts shown in the following table.

Name	Kind	Performance	Replication	Access tier
storage1	Storage (general purpose v1)	Premium	Geo-redundant storage (GRS)	None
storage2	StorageV2 (general purpose v2)	Standard	Locally-redundant storage (LRS)	Cool
storage3	StorageV2 (general purpose v2)	Premium	Read-access geo-redundant storage (RA-GRS)	Hot
storage4	BlobStorage	Standard	Locally-redundant storage (LRS)	Hot

You need to identify which storage account can be converted to zone-redundant storage (ZRS) replication by requesting a live migration from Azure support.

What should you identify?

- A. storage1
- B. storage2
- C. storage3
- D. storage4

**Correct Answer:** B

**Section:** (none)

**Explanation**

**Explanation/Reference:**

Explanation:

ZRS currently supports standard general-purpose v2, FileStorage and BlockBlobStorage storage account types.

Incorrect Answers:

A, not C: Live migration is supported only for storage accounts that use LRS replication. If your account uses GRS or RA-GRS, then you need to first change your account's replication type to LRS before proceeding. This intermediary step removes the secondary endpoint provided by GRS/RA-GRS.

Also, only standard storage account types support live migration. Premium storage accounts must be migrated manually.

D: ZRS currently supports standard general-purpose v2, FileStorage and BlockBlobStorage storage account types.

Reference: <https://docs.microsoft.com/en-us/azure/storage/common/storage-redundancy-zrs>

## QUESTION 2

You have an Azure subscription that contains a storage account named account1.

You plan to upload the disk files of a virtual machine to account1 from your on-premises network. The on-premises network uses a public IP address space of 131.107.1.0/24.

You plan to use the disk files to provision an Azure virtual machine named VM1. VM1 will be attached to a virtual network named VNet1. VNet1 uses an IP address space of 192.168.0.0/24.

You need to configure account1 to meet the following requirements:

- Ensure that you can upload the disk files to account1.
  - Ensure that you can attach the disks to VM1. ▪
- Prevent all other access to account1.

Which two actions should you perform? Each correct answer presents part of the solution.

**NOTE:** Each correct selection is worth one point.

A. From the Firewalls and virtual networks blade of account1, select **Selected networks**.

B. From the Firewalls and virtual networks blade of account1, select **Allow trusted Microsoft services to access this storage account**.

- C. From the Firewalls and virtual networks blade of account1, add the 131.107.1.0/24 IP address range.
- D. From the Firewalls and virtual networks blade of account1, add VNet1.
- E. From the Service endpoints blade of VNet1, add a service endpoint.

**Correct Answer:** AE

**Section:** (none)

**Explanation**

**Explanation/Reference:**

Explanation:

A: By default, storage accounts accept connections from clients on any network. To limit access to selected networks, you must first change the default action.

Azure portal

1. Navigate to the storage account you want to secure.
2. Click on the settings menu called Firewalls and virtual networks.
3. To deny access by default, choose to allow access from 'Selected networks'. To allow traffic from all networks, choose to allow access from 'All networks'.
4. Click Save to apply your changes.

E: Grant access from a Virtual Network

Storage accounts can be configured to allow access only from specific Azure Virtual Networks.

By enabling a Service Endpoint for Azure Storage within the Virtual Network, traffic is ensured an optimal route to the Azure Storage service. The identities of the virtual network and the subnet are also transmitted with each request.

Reference: <https://docs.microsoft.com/en-us/azure/storage/common/storage-network-security>

### QUESTION 3

You have an Azure Storage account named storage1.

You plan to use AzCopy to copy data to storage1.

You need to identify the storage services in storage1 to which you can copy the data.

What should you identify?

- A. blob, file, table, and queue
- B. blob and file only
- C. file and table only

- D. file only
- E. blob, table, and queue only

**Correct Answer:** B

**Section:** (none)

**Explanation**

**Explanation/Reference:**

Explanation:

AzCopy is a command-line utility that you can use to copy blobs or files to or from a storage account.

Incorrect Answers:

A, C, E: AzCopy does not support table and queue storage services.

D: AzCopy supports file storage services, as well as blob storage services.

Reference: <https://docs.microsoft.com/en-us/azure/storage/common/storage-use-azcopy-v10>

#### QUESTION 4

You have an Azure subscription that contains an Azure Storage account.

You plan to create an Azure container instance named container1 that will use a Docker image named Image1. Image1 contains a Microsoft SQL Server instance that requires persistent storage.

You need to configure a storage service for Container1.

What should you use?

- A. Azure Files
- B. Azure Blob storage
- C. Azure Queue storage
- D. Azure Table storage

**Correct Answer:** D

**Section:** (none)

**Explanation**

**Explanation/Reference:**

### QUESTION 5

You have an app named App1 that runs on two Azure virtual machines named VM1 and VM2.

You plan to implement an Azure Availability Set for App1. The solution must ensure that App1 is available during planned maintenance of the hardware hosting VM1 and VM2.

What should you include in the Availability Set?

- A. one update domain
- B. two fault domains
- C. one fault domain
- D. two update domains

**Correct Answer:** D

**Section:** (none)

**Explanation**

**Explanation/Reference:**

Explanation:

Microsoft updates, which Microsoft refers to as planned maintenance events, sometimes require that VMs be rebooted to complete the update. To reduce the impact on VMs, the Azure fabric is divided into update domains to ensure that not all VMs are rebooted at the same time.

Incorrect Answers:

A: An update domain is a group of VMs and underlying physical hardware that can be rebooted at the same time.

B, C: A fault domain shares common storage as well as a common power source and network switch. It is used to protect against unplanned system failure.

References: <https://petri.com/understanding-azure-availability-sets>

<https://docs.microsoft.com/en-us/azure/virtual-machines/windows/tutorial-availability-sets>

### QUESTION 6

You have an on-premises server that contains a folder named D:\Folder1.

You need to copy the contents of D:\Folder1 to the public container in an Azure Storage account named contosodata.

Which command should you run?



- A. `https://contosodata.blob.core.windows.net/public`
- B. `azcopy sync D:\folder1 https://contosodata.blob.core.windows.net/public --snapshot`
- C. `azcopy copy D:\folder1 https://contosodata.blob.core.windows.net/public --recursive`
- D. `az storage blob copy start-batch D:\Folder1 https://contosodata.blob.core.windows.net/public`

**Correct Answer: C**

**Section: (none)**

**Explanation**

**Explanation/Reference:**

Explanation:

The `azcopy copy` command copies a directory (and all of the files in that directory) to a blob container. The result is a directory in the container by the same name.

Incorrect Answers:

B: The `azcopy sync` command replicates the source location to the destination location. However, the file is skipped if the last modified time in the destination is more recent.

D: The `az storage blob copy start-batch` command copies multiple blobs to a blob container.

Reference: <https://docs.microsoft.com/en-us/azure/storage/common/storage-use-azcopy-blobs> <https://docs.microsoft.com/en-us/azure/storage/common/storage-ref-azcopy-copy>

## QUESTION 7

You have an Azure subscription named Subscription1 that contains the storage accounts shown in the following table:

Name	Account kind	Azure service that contains data
storage1	Storage	File
storage2	StorageV2 (general purpose v2)	File, Table
storage3	StorageV2 (general purpose v2)	Queue
storage4	BlobStorage	Blob

You plan to use the Azure Import/Export service to export data from Subscription1.

You need to identify which storage account can be used to export the data.

What should you identify?

- A. storage1
- B. storage2
- C. storage3
- D. storage4

**Correct Answer:** D

**Section:** (none)

**Explanation**

**Explanation/Reference:**

Explanation:

Azure Import/Export service supports the following of storage accounts:

- Standard General Purpose v2 storage accounts (recommended for most scenarios)
- Blob Storage accounts
- General Purpose v1 storage accounts (both Classic or Azure Resource Manager deployments),

Azure Import/Export service supports the following storage types:

- Import supports Azure Blob storage and Azure File storage

Export supports Azure Blob storage

Reference: <https://docs.microsoft.com/en-us/azure/storage/common/storage-import-export-requirements>

### QUESTION 8

You have Azure subscription that includes data in following locations:

Name	Type
container1	Blob container
share1	Azure files share
DB1	SQL database
Table1	Azure Table

You plan to export data by using Azure import/export job named Export1.

You need to identify the data that can be exported by using Export1.

Which data should you identify?

- A. DB1
- B. container1
- C. Share1
- D. Table1

**Correct Answer:** C

**Section:** (none)

**Explanation**

**Explanation/Reference:**

Explanation:

Azure Import/Export service is used to securely import large amounts of data to Azure Blob storage and Azure Files by shipping disk drives to an Azure datacenter.

Reference: <https://docs.microsoft.com/en-us/azure/storage/common/storage-import-export-service> **QUESTION 9**

You have an Azure subscription that contains the resources in the following table.

Name	Type
RG1	Resource group
store1	Azure Storage account
Sync1	Azure File Sync



Store1 contains a file share named data. Data contains 5,000 files.

You need to synchronize the files in the file share named data to an on-premises server named Server1.

Which three actions should you perform? Each correct answer presents part of the solution.

**NOTE:** Each correct selection is worth one point.

- A. Create a container instance
- B. Register Server1
- C. Install the Azure File Sync agent on Server1
- D. Download an automation script
- E. Create a sync group

**Correct Answer:** BCE

**Section:** (none)

**Explanation**

**Explanation/Reference:**

Explanation:

Step 1 (C): Install the Azure File Sync agent on Server1

The Azure File Sync agent is a downloadable package that enables Windows Server to be synced with an Azure file share

Step 2 (B): Register Server1.

Register Windows Server with Storage Sync Service

Registering your Windows Server with a Storage Sync Service establishes a trust relationship between your server (or cluster) and the Storage Sync Service.

Step 3 (E): Create a sync group and a cloud endpoint.

A sync group defines the sync topology for a set of files. Endpoints within a sync group are kept in sync with each other. A sync group must contain one cloud endpoint, which represents an Azure file share and one or more server endpoints. A server endpoint represents a path on registered server.

Reference:

<https://docs.microsoft.com/en-us/azure/storage/files/storage-sync-files-deployment-guide>



## Implement and manage storage

### Testlet 2

#### Case study

This is a case study. **Case studies are not timed separately. You can use as much exam time as you would like to complete each case.** However, there may be additional case studies and sections on this exam. You must manage your time to ensure that you are able to complete all questions included on this exam in the time provided.

To answer the questions included in a case study, you will need to reference information that is provided in the case study. Case studies might contain exhibits and other resources that provide more information about the scenario that is described in the case study. Each question is independent of the other questions in this case study.

At the end of this case study, a review screen will appear. This screen allows you to review your answers and to make changes before you move to the next section of the exam. After you begin a new section, you cannot return to this section.

#### To start the case study

To display the first question in this case study, click the **Next** button. Use the buttons in the left pane to explore the content of the case study before you answer the questions. Clicking these buttons displays information such as business requirements, existing environment, and problem statements. If the case study has an **All Information** tab, note that the information displayed is identical to the information displayed on the subsequent tabs. When you are ready to answer a question, click the **Question** button to return to the question. **Overview**

Contoso, Ltd. is a manufacturing company that has offices worldwide. Contoso works with partner organizations to bring products to market.

Contoso products are manufactured by using blueprint files that the company authors and maintains.

#### Existing Environment

Currently, Contoso uses multiple types of servers for business operations, including the following:

- File servers
- Domain controllers
- Microsoft SQL Server servers

Your network contains an Active Directory forest named contoso.com. All servers and client computers are joined to Active Directory.

You have a public-facing application named App1. App1 is comprised of the following three tiers:

- A SQL database

- A web front end
- A processing middle tier

Each tier is comprised of five virtual machines. Users access the web front end by using HTTPS only.

## Requirements

### Planned Changes

Contoso plans to implement the following changes to the infrastructure:

- Move all the tiers of App1 to Azure.
- Move the existing product blueprint files to Azure Blob storage.
- Create a hybrid directory to support an upcoming Microsoft Office 365 migration project.

### Technical Requirements

Contoso must meet the following technical requirements:

- Move all the virtual machines for App1 to Azure.
  - Minimize the number of open ports between the App1 tiers.
  - Ensure that all the virtual machines for App1 are protected by backups.
  - Copy the blueprint files to Azure over the Internet.
  - Ensure that the blueprint files are stored in the archive storage tier.
  - Ensure that partner access to the blueprint files is secured and temporary.
  - Prevent user passwords or hashes of passwords from being stored in Azure.
  - Use unmanaged standard storage for the hard disks of the virtual machines.
  - Ensure that when users join devices to Azure Active Directory (Azure AD), the users use a mobile phone to verify their identity.
- Minimize administrative effort whenever possible.

### User Requirements

Contoso identifies the following requirements for users:

- Ensure that only users who are part of a group named Pilot can join devices to Azure AD.
- Designate a new user named Admin1 as the service admin for the Azure subscription.
- Admin1 must receive email alerts regarding service outages.
- Ensure that a new user named User3 can create network objects for the Azure subscription.

### QUESTION 1

You need to implement a backup solution for App1 after the application is moved.

What should you create first?

- A. a recovery plan
- B. an Azure Backup Server
- C. a backup policy
- D. a Recovery Services vault

**Correct Answer:** D

**Section:** (none)

**Explanation**

#### **Explanation/Reference:**

Explanation:

A Recovery Services vault is a logical container that stores the backup data for each protected resource, such as Azure VMs. When the backup job for a protected resource runs, it creates a recovery point inside the Recovery Services vault.

Scenario:

There are three application tiers, each with five virtual machines.

Move all the virtual machines for App1 to Azure.

Ensure that all the virtual machines for App1 are protected by backups.

Reference: <https://docs.microsoft.com/en-us/azure/backup/quick-backup-vm-portal>



<https://vceplus.com/>

### QUESTION 2

You need to move the blueprint files to Azure.

What should you do?

- A. Generate an access key. Map a drive, and then copy the files by using File Explorer.
- B. Use Azure Storage Explorer to copy the files.
- C. Use the Azure Import/Export service.
- D. Generate a shared access signature (SAS). Map a drive, and then copy the files by using File Explorer.

**Correct Answer:** B

**Section:** (none)

**Explanation**

**Explanation/Reference:**

Explanation:

Azure Storage Explorer is a free tool from Microsoft that allows you to work with Azure Storage data on Windows, macOS, and Linux. You can use it to upload and download data from Azure blob storage.

Scenario:

Planned Changes include: move the existing product blueprint files to Azure Blob storage.

Technical Requirements include: Copy the blueprint files to Azure over the Internet.

Reference: <https://docs.microsoft.com/en-us/azure/machine-learning/team-data-science-process/move-data-to-azure-blob-using-azure-storage-explorer>



## Deploy and manage Azure compute resources

### Question Set 1

#### QUESTION 1

**Note:** This question is part of a series of questions that present the same scenario. Each question in the series contains a unique solution that might meet the stated goals. Some question sets might have more than one correct solution, while others might not have a correct solution.

After you answer a question in this section, you will NOT be able to return to it. As a result, these questions will not appear in the review screen.

You have an Azure subscription that contains the resources shown in the following table.

Name	Type	Region
RG1	Resource group	West US
RG2	Resource group	East Asia
storage1	Storage account	West US
storage2	Storage account	East Asia
VM1	Virtual machine	West US
VNET1	Virtual network	West US
VNET2	Virtual network	East Asia

VM1 connects to VNET1.

You need to connect VM1 to VNET2.

Solution: You delete VM1. You recreate VM1, and then you create a new network interface for VM1 and connect it to VNET2.

Does this meet the goal?

- A. Yes
- B. No

**Correct Answer:** A

**Section:** (none)

**Explanation**

**Explanation/Reference:**

Explanation:

You should delete VM1. You recreate VM1, and then you add the network interface for VM1.

Note: When you create an Azure virtual machine (VM), you must create a virtual network (VNet) or use an existing VNet. You can change the subnet a VM is connected to after it's created, but you cannot change the VNet.

Reference: <https://docs.microsoft.com/en-us/azure/virtual-machines/windows/network-overview>

## QUESTION 2

You deploy an Azure Kubernetes Service (AKS) cluster named Cluster1 that uses the IP addresses shown in the following table.

IP address	Assigned to
131.107.2.1	Load balancer front end
192.168.10.2	Kubernetes DNS service
172.17.7.1	Docket bridge address
10.0.10.11	Kubernetes cluster node

You need to provide internet users with access to the applications that run in Cluster1.

Which IP address should you include in the DNS record for Cluster1?

- A. 131.107.2.1
- B. 10.0.10.11
- C. 172.17.7.1
- D. 192.168.10.2

**Correct Answer:** A

**Section:** (none)

**Explanation**

**Explanation/Reference:**

## QUESTION 3

You have a deployment template named Template1 that is used to deploy 10 Azure web apps.

You need to identify what to deploy before you deploy Template1. The solution must minimize Azure costs.

What should you identify?

- A. five Azure Application Gateways
- B. one App Service plan
- C. 10 App Service plans
- D. one Azure Traffic Manager
- E. one Azure Application Gateway

**Correct Answer:** B

**Section:** (none)

**Explanation**

**Explanation/Reference:**

Explanation:

You create Azure web apps in an App Service plan.

Reference: <https://docs.microsoft.com/en-us/azure/app-service/overview-hosting-plans>

#### QUESTION 4

You have an Azure subscription that contains a virtual machine named VM1. VM1 hosts a line-of-business application that is available 24 hours a day. VM1 has one network interface and one managed disk. VM1 uses the D4s v3 size.

You plan to make the following changes to VM1:

- Change the size to D8s v3.
- Add a 500-GB managed disk.
- Add the Puppet Agent extension.
- Enable Desired State Configuration Management. Which

change will cause downtime for VM1?

- A. Enable Desired State Configuration Management
- B. Add a 500-GB managed disk
- C. Change the size to D8s v3
- D. Add the Puppet Agent extension

**Correct Answer:** C

**Section: (none)**

**Explanation**

**Explanation/Reference:**

Explanation:

While resizing the VM it must be in a stopped state.

Reference: <https://azure.microsoft.com/en-us/blog/resize-virtual-machines/>

### QUESTION 5

You have an Azure subscription named Subscription1 that has the following providers registered:

- Authorization
- Automation
- Resources
- Compute
- KeyVault ▪

Network

- Storage
- Billing
- Web



Subscription1 contains an Azure virtual machine named VM1 that has the following configurations:

- Private IP address: 10.0.0.4 (dynamic)
- Network security group (NSG): NSG1
- Public IP address: None
- Availability set: AVSet
- Subnet: 10.0.0.0/24
- Managed disks: No ▪

Location: East US

You need to record all the successful and failed connection attempts to VM1.

Which three actions should you perform? Each correct answer presents part of the solution.

**NOTE:** Each correct selection is worth one point.

- A. Enable Azure Network Watcher in the East US Azure region.
- B. Add an Azure Network Watcher connection monitor.
- C. Register the MicrosoftLogAnalytics provider.
- D. Create an Azure Storage account.
- E. Register the Microsoft.Insights resource provider.
- F. Enable Azure Network Watcher flow logs.

**Correct Answer:** ACD

**Section:** (none)

**Explanation**

**Explanation/Reference:**

Explanation:

D: NSG flow log data is written to an Azure Storage account. You need to create an Azure Storage account,

With an Azure Storage account NSG flow logs can be enabled.

A: Enable network watcher in the East US region.

C: NSG flow logging requires the Microsoft.Insights provider.



Reference: <https://docs.microsoft.com/en-us/azure/network-watcher/network-watcher-nsg-flow-logging-portal>

### QUESTION 6

You need to deploy an Azure virtual machine scale set that contains five instances as quickly as possible.

What should you do?

- A. Deploy five virtual machines. Modify the Availability Zones settings for each virtual machine.
- B. Deploy five virtual machines. Modify the Size setting for each virtual machine.
- C. Deploy one virtual machine scale set that is set to VM (virtual machines) orchestration mode.
- D. Deploy one virtual machine scale set that is set to ScaleSetVM orchestration mode.

**Correct Answer:** D

**Section:** (none)

**Explanation**

**Explanation/Reference:**

Reference: <https://docs.microsoft.com/en-us/azure/virtual-machine-scale-sets/orchestration-modes>

**QUESTION 7**

You plan to create the Azure web apps shown in the following table.

Name	Runtime stack
WebApp1	.NET Core 3.0
WebApp2	ASP.NET V4.7
WebApp3	PHP 7.3
WebApp4	Ruby 2.6

What is the minimum number of App Service plans you should create for the web apps?

A. 1



<https://vceplus.com/>

B. 2

C. 3

D. 4

**Correct Answer:** A

**Section:** (none)

**Explanation**

**Explanation/Reference:**

### QUESTION 8

**Note:** This question is part of a series of questions that present the same scenario. Each question in the series contains a unique solution that might meet the stated goals. Some question sets might have more than one correct solution, while others might not have a correct solution.

**After you answer a question in this section, you will NOT be able to return to it. As a result, these questions will not appear in the review screen.**

You have an Azure subscription named Subscription1. Subscription1 contains a resource group named RG1. RG1 contains resources that were deployed by using templates.

You need to view the date and time when the resources were created in RG1.

Solution: From the Subscriptions blade, you select the subscription, and then click **Programmatic deployment**.

Does this meet the goal?

- A. Yes
- B. No

**Correct Answer:** B

**Section:** (none)

**Explanation**

**Explanation/Reference:**

Explanation:

From the RG1 blade, click Deployments. You see a history of deployment for the resource group.

Reference: <https://docs.microsoft.com/en-us/azure/azure-resource-manager/templates/template-tutorial-create-first-template?tabs=azure-powershell>

### QUESTION 9

**Note:** This question is part of a series of questions that present the same scenario. Each question in the series contains a unique solution that might meet the stated goals. Some question sets might have more than one correct solution, while others might not have a correct solution.

**After you answer a question in this section, you will NOT be able to return to it. As a result, these questions will not appear in the review screen.**

You have an Azure subscription named Subscription1. Subscription1 contains a resource group named RG1. RG1 contains resources that were deployed by using templates.

You need to view the date and time when the resources were created in RG1.



Solution: From the RG1 blade, you click **Automation script**.

Does this meet the goal?

- A. Yes
- B. No

**Correct Answer: B**

**Section: (none)**

**Explanation**

**Explanation/Reference:**

Explanation:

From the RG1 blade, click Deployments. You see a history of deployment for the resource group.

Reference:

<https://docs.microsoft.com/en-us/azure/azure-resource-manager/templates/template-tutorial-create-first-template?tabs=azure-powershell>

#### **QUESTION 10**

You have an Azure subscription named Subscription1.

You deploy a Linux virtual machine named VM1 to Subscription1.

You need to monitor the metrics and the logs of VM1.

What should you use?

- A. Azure HDInsight
- B. Linux Diagnostic Extension (LAD) 3.0
- C. the AzurePerformanceDiagnostics extension
- D. Azure Analysis Services

**Correct Answer: C**

**Section: (none)**

**Explanation**

**Explanation/Reference:**

Explanation:

You can use extensions to configure diagnostics on your VMs to collect additional metric data.



The basic host metrics are available, but to see more granular and VM-specific metrics, you need to install the Azure diagnostics extension on the VM. The Azure diagnostics extension allows additional monitoring and diagnostics data to be retrieved from the VM.

Reference:

<https://docs.microsoft.com/en-us/azure/virtual-machines/linux/tutorial-monitoring>

### QUESTION 11

You plan to deploy three Azure virtual machines named VM1, VM2, and VM3. The virtual machines will host a web app named App1.

You need to ensure that at least two virtual machines are available if a single Azure datacenter becomes unavailable.

What should you deploy?

- A. all three virtual machines in a single Availability Zone
- B. all virtual machines in a single Availability Set
- C. each virtual machine in a separate Availability Zone
- D. each virtual machine in a separate Availability Set

**Correct Answer:** B

**Section:** (none)

**Explanation**



**Explanation/Reference:**

Explanation:

Availability sets are a datacenter configuration to provide VM redundancy and availability. This configuration within a datacenter ensures that during either a planned or unplanned maintenance event, at least one virtual machine is available.

Reference: <https://docs.microsoft.com/en-us/azure/virtual-machines/windows/manage-availability> <https://docs.microsoft.com/en-us/azure/virtual-machines/windows/tutorial-availability-sets>

### QUESTION 12

You have an Azure virtual machine named VM1 that runs Windows Server 2019.

You save VM1 as a template named Template1 to the Azure Resource Manager library.

You plan to deploy a virtual machine named VM2 from Template1.

What can you configure during the deployment of VM2?

- A. operating system
- B. administrator username
- C. virtual machine size
- D. resource group

**Correct Answer:** B

**Section:** (none)

**Explanation**

**Explanation/Reference:**

Explanation:

When deploying a virtual machine from a template, you must specify:

- the Resource Group name and location for the VM
- the administrator username and password ▪ an unique DNS name for the public IP

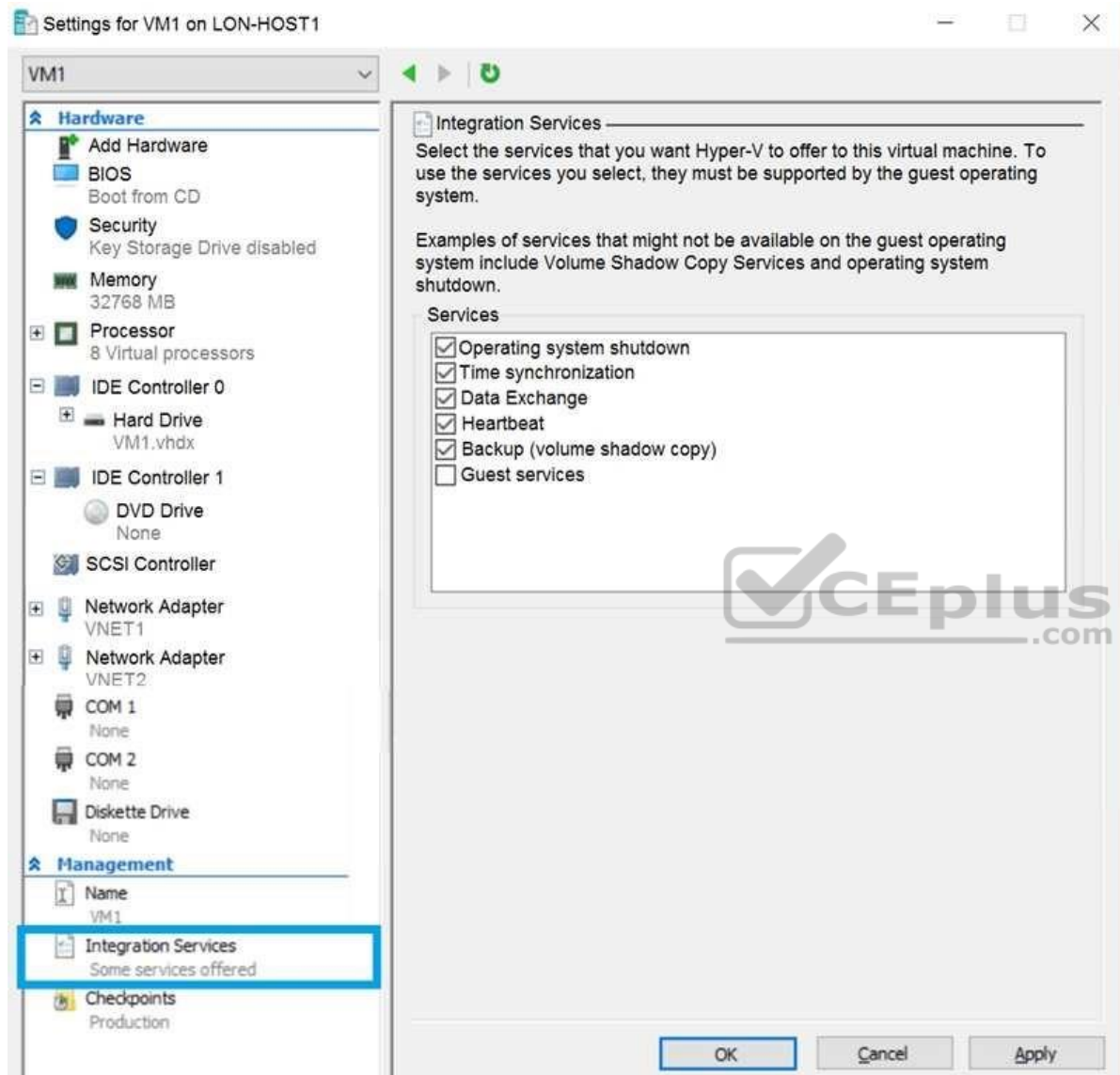
Reference: <https://docs.microsoft.com/en-us/azure/virtual-machines/windows/ps-template>

### QUESTION 13

You have an Azure subscription.

You have an on-premises virtual machine named VM1. The settings for VM1 are shown in the exhibit. (Click the **Exhibit** tab.)





You need to ensure that you can use the disks attached to VM1 as a template for Azure virtual machines.

What should you modify on VM1?

- A. the memory
- B. the network adapters
- C. the hard drive
- D. the processor
- E. Integration Services

**Correct Answer:** C

**Section:** (none)

**Explanation**

**Explanation/Reference:**

Explanation:

From the exhibit we see that the disk is in the VHDX format.

Before you upload a Windows virtual machine (VM) from on-premises to Microsoft Azure, you must prepare the virtual hard disk (VHD or VHDX). Azure supports only generation 1 VMs that are in the VHD file format and have a fixed sized disk. The maximum size allowed for the VHD is 1,023 GB. You can convert a generation 1 VM from the VHDX file system to VHD and from a dynamically expanding disk to fixed-sized.

Reference:

<https://docs.microsoft.com/en-us/azure/virtual-machines/windows/prepare-for-upload-vhd-image>

#### QUESTION 14

You have an Azure subscription named Subscription1 that is used by several departments at your company. Subscription1 contains the resources in the following table:

Name	Type
storage1	Storage account
RG1	Resource group
container1	Blob container
share1	File share

Another administrator deploys a virtual machine named VM1 and an Azure Storage account named storage2 by using a single Azure Resource Manager template.

You need to view the template used for the deployment.

From which blade can you view the template that was used for the deployment?

- A. VM1
- B. RG1
- C. storage2
- D. container1

**Correct Answer: B**

**Section: (none)**

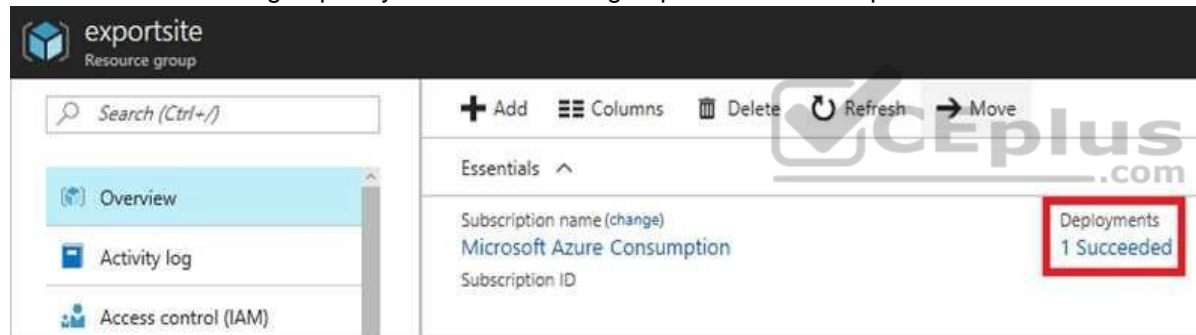
**Explanation**

**Explanation/Reference:**

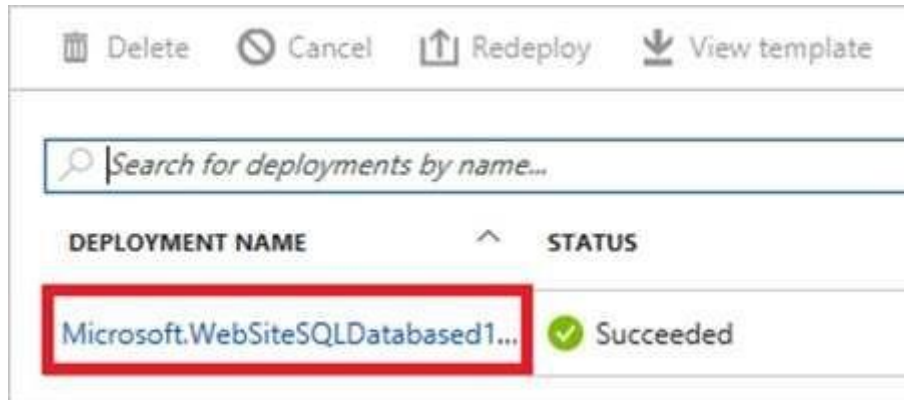
Explanation:

View template from deployment history

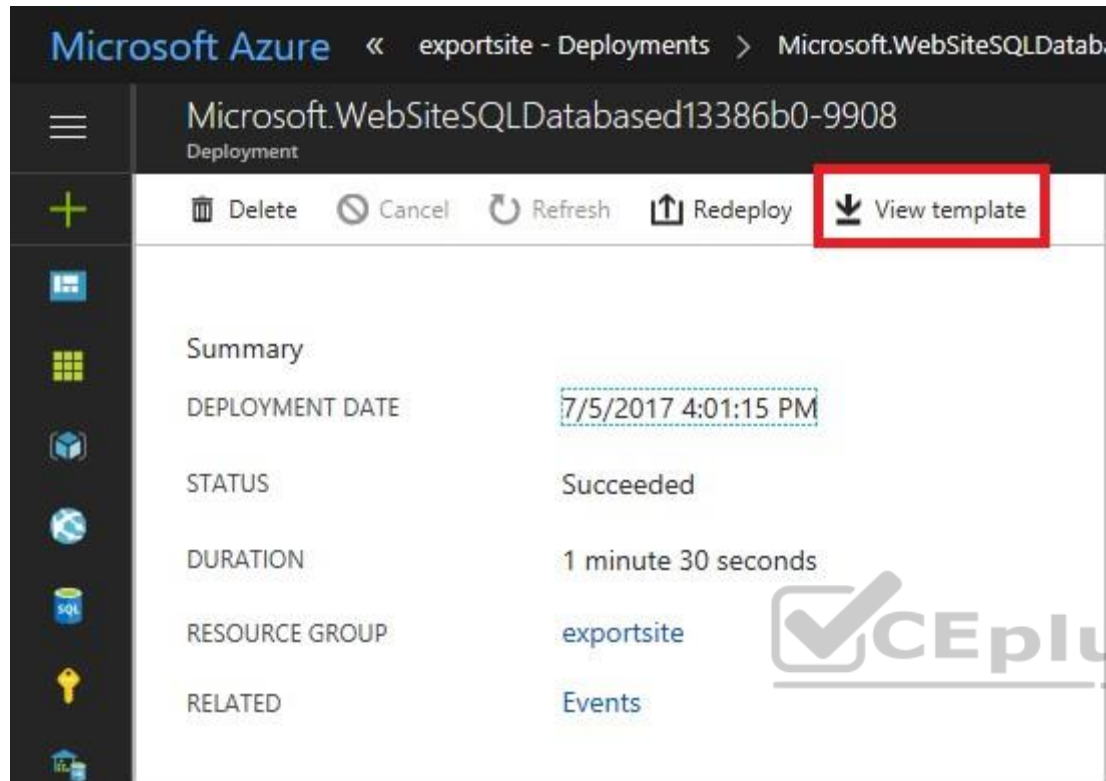
1. Go to the resource group for your new resource group. Notice that the portal shows the result of the last deployment. Select this link.



2. You see a history of deployments for the group. In your case, the portal probably lists only one deployment. Select this deployment.



3. The portal displays a summary of the deployment. The summary includes the status of the deployment and its operations and the values that you provided for parameters. To see the template that you used for the deployment, select View template.



Reference:

<https://docs.microsoft.com/en-us/azure/azure-resource-manager/resource-manager-export-template>

### QUESTION 15

**Note:** This question is part of a series of questions that present the same scenario. Each question in the series contains a unique solution that might meet the stated goals. Some question sets might have more than one correct solution, while others might not have a correct solution.

After you answer a question in this section, you will NOT be able to return to it. As a result, these questions will not appear in the review screen.

You have an Azure virtual machine named VM1 that runs Windows Server 2016.

You need to create an alert in Azure when more than two error events are logged to the System event log on VM1 within an hour.

Solution: You create an Azure Log Analytics workspace and configure the data settings. You add the Microsoft Monitoring Agent VM extension to VM1. You create an alert in Azure Monitor and specify the Log Analytics workspace as the source.

Does this meet the goal?

- A. Yes
- B. No

**Correct Answer: B**

**Section: (none)**

**Explanation**

**Explanation/Reference:**

Explanation:

Instead: You create an Azure Log Analytics workspace and configure the data settings. You install the Microsoft Monitoring Agent on VM1. You create an alert in Azure Monitor and specify the Log Analytics workspace as the source.

Reference:

<https://docs.microsoft.com/en-us/azure/azure-monitor/platform/agents-overview>

#### **QUESTION 16**

**Note: This question is part of a series of questions that present the same scenario. Each question in the series contains a unique solution that might meet the stated goals. Some question sets might have more than one correct solution, while others might not have a correct solution.**

**After you answer a question in this section, you will NOT be able to return to it. As a result, these questions will not appear in the review screen.**

You have an Azure virtual machine named VM1 that runs Windows Server 2016.

You need to create an alert in Azure when more than two error events are logged to the System event log on VM1 within an hour.

Solution: You create an Azure storage account and configure shared access signatures (SASs). You install the Microsoft Monitoring Agent on VM1. You create an alert in Azure Monitor and specify the storage account as the source.

Does this meet the goal?

- A. Yes
- B. No

**Correct Answer: B**



**Section: (none)**

**Explanation**

**Explanation/Reference:**

Explanation:

Instead: You create an Azure Log Analytics workspace and configure the data settings. You install the Microsoft Monitoring Agent on VM1. You create an alert in Azure Monitor and specify the Log Analytics workspace as the source.

Reference:

<https://docs.microsoft.com/en-us/azure/azure-monitor/platform/agents-overview>

### QUESTION 17

You plan to automate the deployment of a virtual machine scale set that uses the Windows Server 2016 Datacenter image.

You need to ensure that when the scale set virtual machines are provisioned, they have web server components installed.

Which two actions should you perform? Each correct answer presents part of the solution.

**NOTE:** Each correct selection is worth one point.

- A. Upload a configuration script
- B. Create an automation account
- C. Create an Azure policy
- D. Modify the `extensionProfile` section of the Azure Resource Manager template
- E. Create a new virtual scale set in the Azure portal

**Correct Answer: DE**

**Section: (none)**

**Explanation**

**Explanation/Reference:**

Explanation:

Virtual Machine Scale Sets can be used with the Azure Desired State Configuration (DSC) extension handler. Virtual machine scale sets provide a way to deploy and manage large numbers of virtual machines, and can elastically scale in and out in response to load. DSC is used to configure the VMs as they come online so they are running the production software.

Reference:

<https://docs.microsoft.com/en-us/azure/virtual-machine-scale-sets/virtual-machine-scale-sets-dsc>

### QUESTION 18

You create an App Service plan named Plan1 and an Azure web app named webapp1.

You discover that the option to create a staging slot is unavailable.

You need to create a staging slot for Plan1.

What should you do first?

- A. From Plan1, scale up the App Service plan
- B. From webapp1, modify the Application settings
- C. From webapp1, add a custom domain
- D. From Plan1, scale out the App Service plan

**Correct Answer:** A

**Section:** (none)

**Explanation**

**Explanation/Reference:**

Explanation:

The app must be running in the Standard, Premium, or Isolated tier in order for you to enable multiple deployment slots.

If the app isn't already in the Standard, Premium, or Isolated tier, you receive a message that indicates the supported tiers for enabling staged publishing. At this point, you have the option to select Upgrade and go to the Scale tab of your app before continuing.

Scale up: Get more CPU, memory, disk space, and extra features like dedicated virtual machines (VMs), custom domains and certificates, staging slots, autoscaling, and more.

Incorrect:

Scale out: Increase the number of VM instances that run your app. You can scale out to as many as 30 instances

Reference: <https://docs.microsoft.com/en-us/azure/app-service/deploy-staging-slots> <https://docs.microsoft.com/en-us/azure/app-service/manage-scale-up>

### QUESTION 19

**Note:** This question is part of a series of questions that present the same scenario. Each question in the series contains a unique solution that might meet the stated goals. Some question sets might have more than one correct solution, while others might not have a correct solution.

After you answer a question in this section, you will NOT be able to return to it. As a result, these questions will not appear in the review screen.

You have an Azure virtual machine named VM1. VM1 was deployed by using a custom Azure Resource Manager template named ARM1.json.

You receive a notification that VM1 will be affected by maintenance.

You need to move VM1 to a different host immediately.

Solution: From the Overview blade, you move the virtual machine to a different subscription.

Does this meet the goal?

- A. Yes
- B. No

**Correct Answer: B**

**Section: (none)**

**Explanation**

**Explanation/Reference:**

Explanation:

You would need to redeploy the VM.

Reference:

<https://docs.microsoft.com/en-us/azure/virtual-machines/windows/redeploy-to-new-node>

## QUESTION 20

**Note: This question is part of a series of questions that present the same scenario. Each question in the series contains a unique solution that might meet the stated goals. Some question sets might have more than one correct solution, while others might not have a correct solution.**

**After you answer a question in this section, you will NOT be able to return to it. As a result, these questions will not appear in the review screen.**

You have an Azure virtual machine named VM1. VM1 was deployed by using a custom Azure Resource Manager template named ARM1.json.

You receive a notification that VM1 will be affected by maintenance.

You need to move VM1 to a different host immediately.

Solution: From the Redeploy blade, you click **Redeploy**.

Does this meet the goal?

- A. Yes
- B. No

**Correct Answer:** A

**Section:** (none)

**Explanation**

**Explanation/Reference:**

Explanation:

When you redeploy a VM, it moves the VM to a new node within the Azure infrastructure and then powers it back on, retaining all your configuration options and associated resources.

References: <https://docs.microsoft.com/en-us/azure/virtual-machines/windows/redeploy-to-new-node>



<https://vceplus.com/>