

JN0-1301.VCEplus.premium.exam.65q

Number: JN0-1301
Passing Score: 800
Time Limit: 120 min
File Version: 1.0



Website: <https://vceplus.com>

VCE to PDF Converter: <https://vceplus.com/vce-to-pdf/>

Facebook: <https://www.facebook.com/VCE.For.All.VN/>

Twitter : https://twitter.com/VCE_Plus

JN0-1301

Juniper Networks Certified Design Specialist, Data Center (JNCDS-DC)



Version 1.0

Exam A

QUESTION 1 You plan to deploy a set of SRX Series devices in an active/passive chassis cluster with an active/active network infrastructure.

Which two statements are true in this scenario? (Choose two.)

- A. This deployment scenario is recommended when firewall services are used extensively for north-south traffic.
- B. This deployment scenario is recommended when firewall services are used extensively for east-west traffic.
- C. End-host traffic is serviced through one SRX node during non-failure conditions.
- D. End-host traffic is serviced through both SRX nodes during non-failure conditions.

Correct Answer: AC

Section: (none)

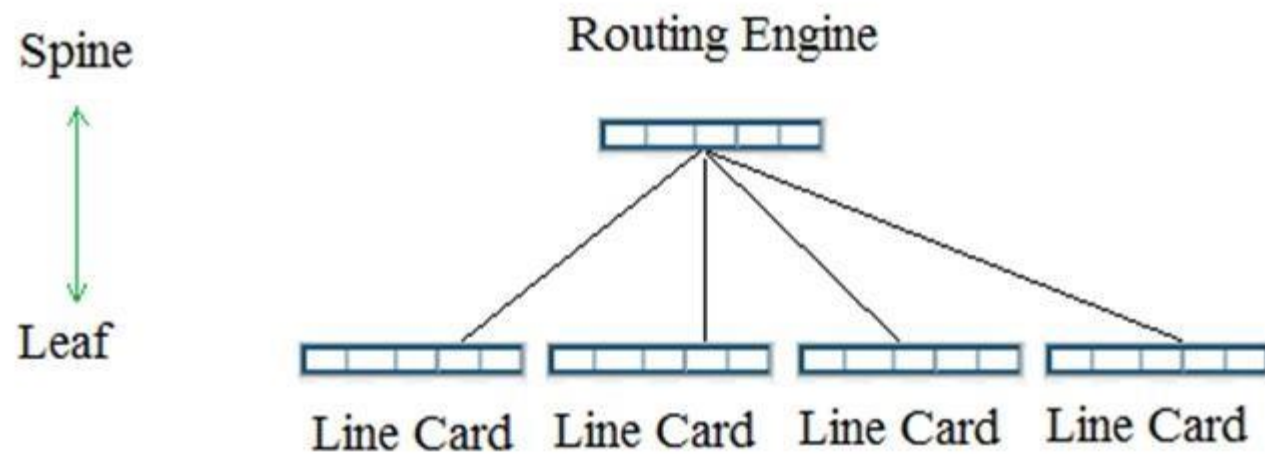
Explanation

Explanation/Reference:

QUESTION 2

Click the Exhibit button.

Referring to the exhibit, what must you change to make the topology a supported Virtual Chassis Fabric design?



- A. Change the Routing Engine to a line card.
- B. Remove one leaf node.
- C. Add a second spine node.
- D. Change one of the line cards to a VCP master instance.

Correct Answer: C

Section: (none)

Explanation

Explanation/Reference:

QUESTION 3

You are designing an IP fabric using EVPN with VXLAN and must ensure that all links between the leaf and spine nodes are used as efficiently as possible. Which two design considerations are important to achieve this task? (Choose two.)

- A. Load balancing is automatic in an IP fabric design.
- B. Load balancing must be managed by an SDN controller in an IP fabric design.
- C. The overlay network needs to support load balancing.
- D. The underlay network needs to support load balancing.

Correct Answer: AD

Section: (none)

Explanation

Explanation/Reference:

QUESTION 4

You are designing a Control-based SDN overlay network. IP filtering and tenant separation for Layer 3 and Layer 4 traffic is required for this installation.

In this scenario, which Contrail component performs this function?

- A. vSwitch
- B. control node
- C. vRouter
- D. compute node

Correct Answer: C

Section: (none)

Explanation



Explanation/Reference:

QUESTION 5

You are implementing traffic prioritization in your IP fabric. You must ensure that traffic is handled correctly throughout the fabric.

In this scenario, which statement is correct?

- A. You should implement a BA classifier on all egress interfaces on the leaf devices.
- B. Rewrite rules must be applied on the spine devices for all leaf-facing interfaces.
- C. You should implement a BA classifier on all egress interfaces on the spine devices.
- D. Schedulers should be applied to all egress interfaces on your leaf and spine devices.

Correct Answer: D

Section: (none)

Explanation

Explanation/Reference:

QUESTION 6

You want to provide Layer 2 connectivity to a backup data center or to a disaster recovery site. What would you use to accomplish this task?

- A. Data Center Interconnect
- B. network redundancy
- C. SDN
- D. SAN protocols

Correct Answer: A

Section: (none)

Explanation

Explanation/Reference:

QUESTION 7 You are creating a design proposal and deciding whether to use 10 GbE copper or 10GbE fiber cabling to connect your ToR switches to the servers.

Which statement is correct regarding this scenario?

- A. Fiber has a lower power consumption on a per-port basis.
- B. Copper cabling requires special transceivers for different speeds.
- C. Fiber is much cheaper to purchase but has a higher long-term cost.
- D. Copper will allow you to reach the greatest distance between devices.

Correct Answer: A

Section: (none)

Explanation

Explanation/Reference:

QUESTION 8 What are two Layer 2 traffic tunneling schemes that are supported in a Juniper Networks IP fabric? (Choose two.)

- A. EVPN
- B. MPLSoGRE
- C. GENEVE
- D. VXLAN



Correct Answer: AD

Section: (none)

Explanation

Explanation/Reference:

QUESTION 9

A customer has selected QFX5110 switches. The initial installation will contain two switches located in racks about two meters apart. What is the most cost-effective way to interconnect these switches?

- A. Use SMF between the racks and interconnect the switches with LX4 transceivers.
- B. Use a Virtual Chassis cable between the VCP cards.
- C. Use MMF between the racks and interconnect the switches with SR4 transceivers.
- D. Use a three-meter passive DAC cable between the racks and interconnect the switches with it.

Correct Answer: D

Section: (none)

Explanation

Explanation/Reference:

QUESTION 10

Which two statements are true about IP fabrics? (Choose two.)

- A. IP-based applications do not require an overlay network to maintain connectivity.

- B. Applications that require security needs an overlay to provide the security.
- C. Applications that require Layer 2 adjacencies require an overlay network to maintain connectivity.
- D. IP fabrics can natively support both Layer 2 and Layer 3 applications.

Correct Answer: CD

Section: (none)

Explanation

Explanation/Reference:

QUESTION 11 Clos architectures are based on which network topology?

- A. ring
- B. VLANs
- C. hybrid
- D. spine and leaf

Correct Answer: D

Section: (none)

Explanation

Explanation/Reference:

QUESTION 12 What are two methods used to protect the data center perimeter?
(Choose two.)

- A. session authentication
- B. DDoS protection
- C. asset classification
- D. network subnetting

Correct Answer: AB

Section: (none)

Explanation

Explanation/Reference:

QUESTION 13 What are two requirements for a VXLAN tunnel endpoint (VTEP)?
(Choose two.)

- A. TCP session tracking
- B. MAC address learning
- C. IGMP filtering
- D. IP address learning of interested VTEPs

Correct Answer: BD

Section: (none)

Explanation

Explanation/Reference:

QUESTION 14

You are designing a Layer 2 fabric implementation for a small data center and have chosen to implement a Virtual Chassis Fabric. You must accommodate two racks of servers with 1 Gbps connectivity, 10 racks of servers with 10 Gbps connectivity, and maintain a single management interface.

Which device would satisfy the requirements in this implementation?

- A. QFX5110
- B. QFX10002
- C. EX4600
- D. EX4300

Correct Answer: A

Section: (none)

Explanation

Explanation/Reference:

QUESTION 15

You are implementing a new financial application in your data center. You must ensure Web traffic to this server is secure.

Which Junos feature would you use to accomplish this task?

- A. graceful restart
- B. antispam
- C. AppSecure
- D. Virtual Chassis

Correct Answer: C

Section: (none)

Explanation

Explanation/Reference:



QUESTION 16

Your data center uses a Virtual Chassis Fabric. The ToR switches have 48 ports and each rack supports 20 servers. Each server has two ports that are configured as a LAG.

You need to implement link level redundancy but you cannot use two ports on the same device for this redundancy.

Which type of connection should you use to complete this task?

- A. MC-LAG
- B. RTG
- C. LAG
- D. ESI

Correct Answer: C

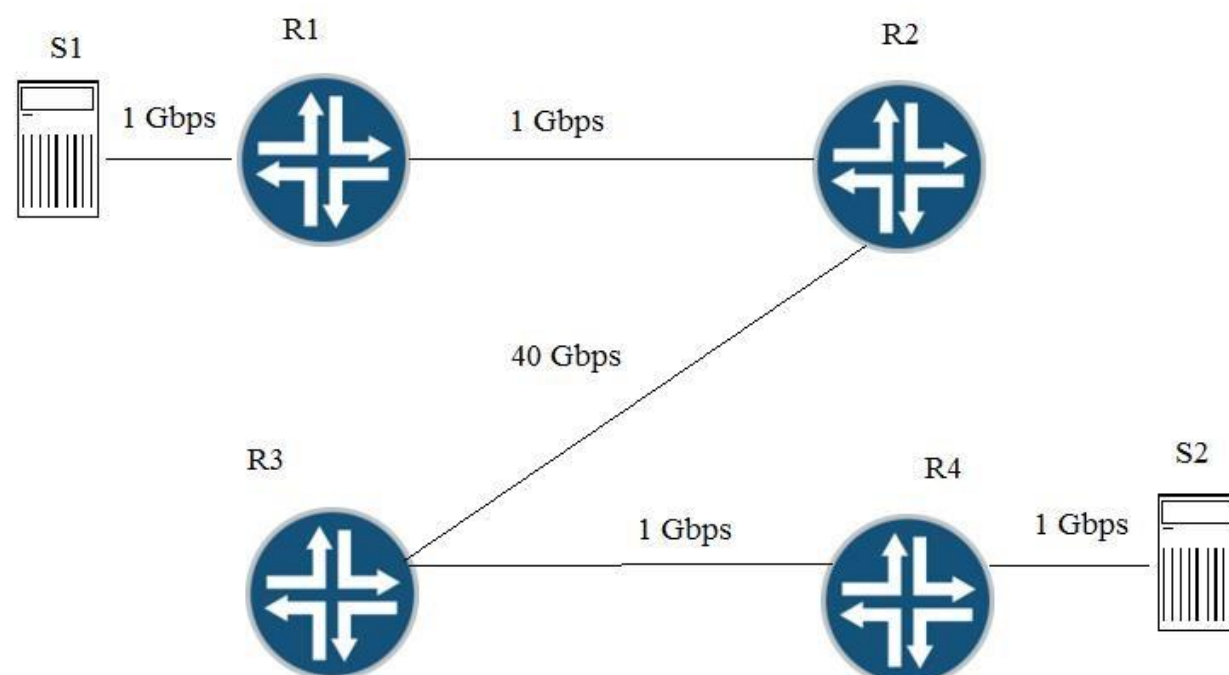
Section: (none)

Explanation

Explanation/Reference:

QUESTION 17

Click the Exhibit button. Traffic congestion is noticed when sending traffic from S1 to S2. You must design a CoS deployment to address the traffic congestion issue. Referring to the exhibit, which two statements are true? (Choose two.)



- A. You should use BA classifiers on R1.
- B. You should use multifield classifiers on R2, R3, and R4.
- C. You should use multifield classifiers on R1.
- D. You should use BA classifiers on R2, R3, and R4.

Correct Answer: AB

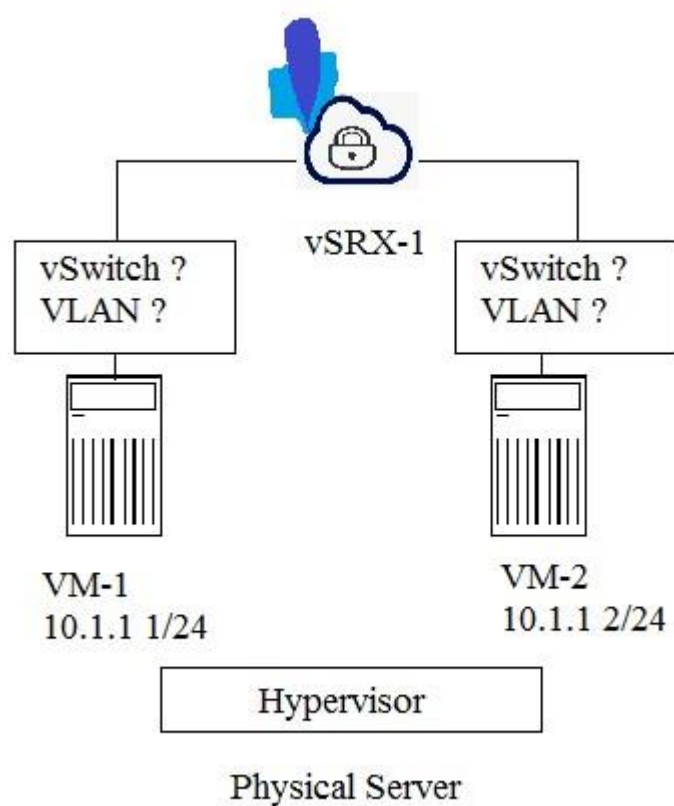
Section: (none)

Explanation

Explanation/Reference:

QUESTION 18 Click the Exhibit button. Referring to the exhibit, you want the vSRX device to inspect inter-VM traffic.

Which two actions must you take to accomplish this task? (Choose two.)



- A. You must put the connections between the VMs and the vSRX device in separate VLANs.
- B. You must put the connections between the VMs and the vSRX device in separate vSwitches.
- C. You must put the connection between the VMs and the vSRX device in the same VLAN.
- D. You must put the connection between the VMs and the vSRX device in the same vSwitch.



Correct Answer: AB

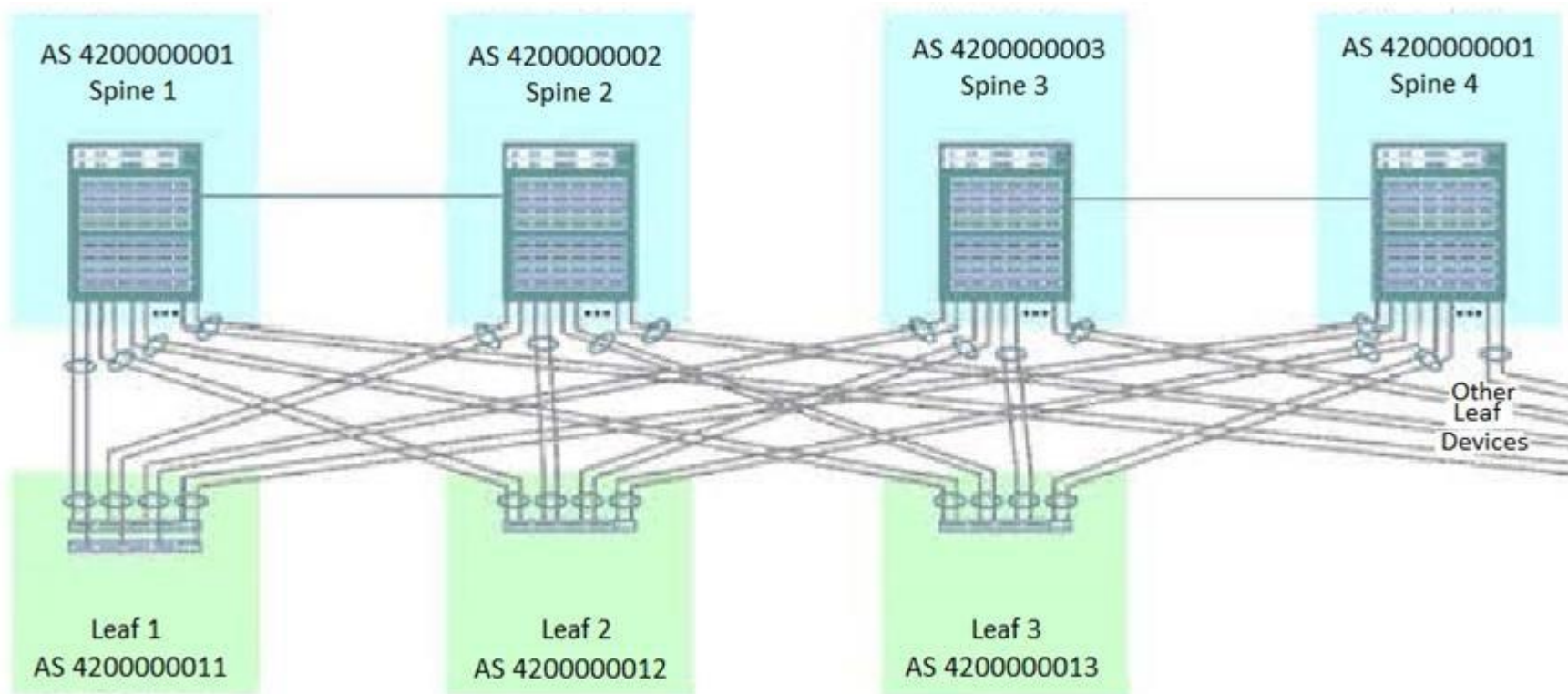
Section: (none)

Explanation

Explanation/Reference:

QUESTION 19

Click the Exhibit button. You are creating a resilient IP fabric for a data center based on a Clos architecture. Referring to the exhibit, which statement is true?



- A. A physical link must be added between spine 2 and spine 3 and between spine 1 and spine 4.
- B. Additional physical links between spine 1 and spine 2 and between spine 3 and spine 4 must be added for resiliency.
- C. No physical links need to be added or removed.
- D. The physical links between spine 1 and spine 2 and between spine 3 and spine 4 must be removed.



Correct Answer: D

Section: (none)

Explanation

Explanation/Reference:

QUESTION 20

A large multinational corporation wants to implement SDN for rapid deployment of application environments.

You are asked to define SDN service chaining for a presentation to executive management.

In this scenario, which statement would satisfy the requirement?

- A. Integrated software is used to insert a software widget into the flow of network traffic.
- B. Stacked hardware is used to insert a software widget into the flow of network traffic.
- C. Software is used to virtually insert services into the flow of network traffic.
- D. Hardware is used to virtually insert services into the flow of network traffic.

Correct Answer: C

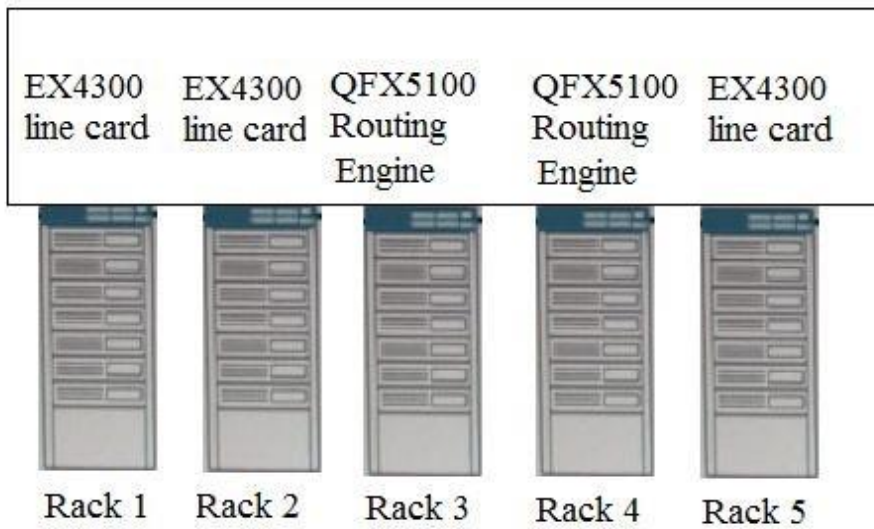
Section: (none)

Explanation

Explanation/Reference:

QUESTION 21

Click the Exhibit button. You are designing a Layer 2 Ethernet fabric. Your customer wants to know which protocol in your design will ensure a loop-free topology. Referring to the exhibit, which protocol meets this requirement?



- A. STP
- B. VCCP
- C. BGP
- D. EVPN

Correct Answer: B

Section: (none)

Explanation

Explanation/Reference:



QUESTION 22 Which two statements about data center design are correct?

(Choose two.)

- A. The most efficient traffic flow pattern is 50% east-west and 50% north-south.
- B. A data center that provides hosted services should scale based on customer demands.
- C. A multitier design provides better performance as the number of applications increase.
- D. An application may query several resources in response to a single user request.

Correct Answer: BD

Section: (none)

Explanation

Explanation/Reference:

QUESTION 23 You are designing an IP fabric using EBGp.

In this scenario, what are two ways of designing the ASN scheme for the IP fabric? (Choose two.)

- A. Assign the same ASN to all devices.
- B. Assign the ASN to all leaf devices and a separate ASN to all spine devices.
- C. Assign a unique ASN to each individual device.
- D. Assign the same ASN used by the WAN service provider to the spine devices.

Correct Answer: CD

Section: (none)

Explanation

Explanation/Reference:

QUESTION 24 Which Junos NFV device is used to provide security in virtualized environments?

- A. TCX1000
- B. SSG20
- C. IC6500
- D. vSRX

Correct Answer: D

Section: (none)

Explanation

Explanation/Reference:

QUESTION 25 You have included in your data center design an SRX1500 chassis cluster. The RFP requires a documented upgrade process for the cluster that minimizes downtime. What satisfies this requirement in this scenario?

- A. an in-service software upgrade
- B. a topology-independent in-service software upgrade
- C. a manual device upgrade
- D. a nonstop software upgrade

Correct Answer: A

Section: (none)

Explanation



Explanation/Reference:

QUESTION 26 Which two statements are correct about current data center designs? (Choose two.)

- A. Network functions are being virtualized.
- B. Public IP addresses are easy to obtain but not manage.
- C. There is a proliferation of distributed applications.
- D. There is a proliferation of monolithic applications.

Correct Answer: AC

Section: (none)

Explanation

Explanation/Reference:

QUESTION 27 Which two statements about heating and cooling design are correct? (Choose two.)

- A. All devices in a rack should be installed so that the port panels are on the same regardless of the air flow direction.
- B. All devices in a rack should be installed so that the air flow is in the same direction regardless of the port panel location.
- C. In the hot-aisle/cold-aisle design, air enters through vents in the hot-aisle and exists through cold-aisle vents.
- D. The hot-aisle/cold-aisle design maximizes the cooling potential of the air conditioning system.

Correct Answer: CD

Section: (none)

Explanation

Explanation/Reference:

QUESTION 28

You plan to deploy a set of SRX Series devices in an active/passive chassis cluster with an active/passive network infrastructure. Which two statements are true in this scenario? (Choose two.)

- A. End-host traffic is serviced through both SRX nodes during non-failure conditions.
- B. End-host traffic is serviced through one SRX node during non-failure conditions.
- C. In non-failure conditions, the end-host traffic across the fabric link is present.
- D. In non-failure conditions, the end-host traffic across the fabric link is eliminated.

Correct Answer: BD

Section: (none)

Explanation

Explanation/Reference:

QUESTION 29

Your company is deploying a private cloud based on OpenStack and has selected Contrail Networking as its SDN controller. Which two statements are true in this scenario? (Choose two.)

- A. Underlay tunnels are established between virtualized and bare-metal servers.
- B. MPLS over UDP tunnels are supported.
- C. Overlay tunnels are established between virtualized and bare-metal servers.
- D. MPLS over GRE tunnels are supported.

Correct Answer: CD

Section: (none)

Explanation

Explanation/Reference:



QUESTION 30 Which statement is true about highly available data center architectures?

- A. All data center devices require the same level of uptime.
- B. They require the use of a services block for non switching/routing devices.
- C. They are never segmented into zones or PoDs.
- D. During a failure, a data center should gracefully degrade.

Correct Answer: B

Section: (none)

Explanation

Explanation/Reference:

QUESTION 31 What are two components of a class-of-service (CoS) switching configuration? (Choose two.)

- A. forwarding tables
- B. bandwidth
- C. port speed
- D. forwarding class

Correct Answer: BD

Section: (none)

Explanation

Explanation/Reference:

QUESTION 32 Which two characteristics describe the deployment of high-density chassis switches in a data center?
(Choose two.)

- A. In EoR deployments, the switches are consolidated in one location.
- B. The switches consume a great deal of power, cooling, and space.
- C. In ToR deployments, the switches provide more port connections, but with lower speeds.
- D. More switches are often needed to accommodate the number of server connections.

Correct Answer: BD

Section: (none)

Explanation

Explanation/Reference:

QUESTION 33 Your data center uses an Ethernet fabric solution for the infrastructure switches.

You must design a redundancy solution that addresses how the servers connect to the members of the Ethernet fabric. Which two statements are true in this scenario? (Choose two.)

- A. It is necessary to use MC-LAG.
- B. You should connect each server to one member with a two-interface LAG.
- C. You should connect each server to two different members.
- D. It is not necessary to use MC-LAG.



Correct Answer: CD

Section: (none)

Explanation

Explanation/Reference:

QUESTION 34

You are asked to provide a data center design proposal. The customer wants each rack to be managed as a single unit with the shortest possible cable lengths.

Which deployment model meets these requirements?

- A. top of rack
- B. middle of rack
- C. middle of row
- D. end of row

Correct Answer: B

Section: (none)

Explanation

Explanation/Reference:

QUESTION 35

Which data center fabric architecture independently supports the greatest quantity of hosts and servers?

- A. Virtual Chassis Fabric

- B. Layer 3 Clos
- C. QFabric system
- D. Junos Fusion

Correct Answer: B

Section: (none)

Explanation A. 0 B.....	2
C.....	3
D.....	4
Correct Answer:	4

Explanation/Reference:

QUESTION 36

From a network management perspective, a Virtual Chassis consisting of five physical switches will appear as how many devices?

Section: (none)

Explanation

Explanation/Reference:

QUESTION 37

A customer asks you if they should implement nonstop active routing (NSR) in some cases to replace graceful restart in their data center. In this scenario, which two statements are true? (Choose two.)

- A. NSR saves routing protocol information by running the routing protocol process (rpd) on the backup Routing Engine.
- B. NSR is self-contained and does not rely on helper routers (or switches) to assist the routing platform in restoring routing protocol information.
- C. NSR accounts for large and small traffic flows to ensure coherent forwarding path selection during failover.
- D. NSR delivers TCP/UDP stream status reducing control plane stress for other networking devices through concatenated announcements from the routing protocol process (rpd)

Correct Answer: AB

Section: (none)

Explanation

Explanation/Reference:

QUESTION 38 You are designing a DCI strategy. You must provide a solution that meets the requirements shown below:

- sub 50 ms failover to alternate path
- supports L2 and L3 VPNs
- supports traffic engineered paths

Which technology would satisfy the requirements?

- A. MPLS
- B. GRE
- C. BGP
- D. IPsec

Correct Answer: A

Section: (none)

Explanation

Explanation/Reference:

QUESTION 39

You need a security management solution for your data center that will support centralized network visibility and control, J-Flow collection from existing perimeter devices, and SIEM. In this scenario, which two products should you choose for your data center design? (Choose two.)

- A. vSRX
- B. Security Director
- C. JSA
- D. Sky ATP

Correct Answer: AC

Section: (none)

Explanation

Explanation/Reference:

QUESTION 40

You plan to deploy a set of SRX Series devices in an active/active chassis cluster with an active/active network infrastructure.

Which two statements are true in this scenario? (Choose two.)

- A. This deployment scenario is recommended when firewall services are used extensively for east-west traffic.
- B. End-host traffic is serviced through one SRX node during non-failure conditions.
- C. This deployment scenario is recommended when firewall services are used extensively for north-south traffic.
- D. End-host traffic is serviced through both SRX nodes during non-failure conditions.

Correct Answer: AD

Section: (none)

Explanation

Explanation/Reference:



QUESTION 41 You are re-designing a traditional multitiered data center into a modern spine-and-leaf data center architecture. In this scenario, which two tiers are collapsed? (Choose two.)

- A. distribution
- B. WAN
- C. access
- D. core

Correct Answer: AD

Section: (none)

Explanation

Explanation/Reference:

QUESTION 42

You are designing a Junos-based Ethernet Fabric for a data center that has a combination of 60 EX Series and QFX Series devices. In this scenario, which solution would you choose?

- A. Junos Fusion Provider Edge
- B. Virtual Chassis
- C. Junos Fusion Data Center
- D. Virtual Chassis Fabric

Correct Answer: D

Section: (none)

Explanation

Explanation/Reference:

QUESTION 43

How many inches does one RU equal?

- A. 1.000
- B. 1.251
- C. 1.527
- D. 1.752

Correct Answer: D

Section: (none)

Explanation

Explanation/Reference:

QUESTION 44

A customer is using EVPN to maximize their Data Center Interconnect and provide a stretched Layer 2 network to support VM mobility. What are two benefits in this scenario? (Choose two.)

- A. Load balancing is used across the WAN per flow
- B. Layer 2 MAC tables are populated using the control plane
- C. Load balancing is used across the WAN per packet
- D. Layer 2 MAC tables are populated using the data plane

Correct Answer: AB

Section: (none)

Explanation

Explanation/Reference:

QUESTION 45 Which two statements describe the Contrail vRouter?

(Choose two.)

- A. It is forwarding plane that runs software on a virtualized server.
- B. It extends the network form physical routers and switches into an overlay network hosted in virtual server.
- C. It is responsible for providing the management, control, and analytics functions of the virtualized network.
- D. It provides the logically centralized control plane and management plane of the system.

Correct Answer: AC

Section: (none)

Explanation

Explanation/Reference:

QUESTION 46

Two data centers need to be connected for application and server mobility. An MPLS pseudowire is going to facilitate the necessary connectivity.

This pseudowire will extend between which two types of network devices?

- A. PE to CE
- B. PE to P
- C. PE to PE
- D. CE to CE



Correct Answer: C

Section: (none)

Explanation

Explanation/Reference:

QUESTION 47

Your company is deploying a private cloud based on OpenStack and has selected Contrail Networking as their SDN controller. Which statement is true in this scenario?

- A. All bare-metal servers must run a vSRX instance for overlay tunneling.
- B. All virtualized servers must run a vSRX instance for overlay tunneling
- C. All bare-metal server must run a vRouter for overlay tunneling
- D. All virtualized servers must run a vRouter for overlay tunneling

Correct Answer: BC

Section: (none)

Explanation

Explanation/Reference:

QUESTION 48

You are seeking a server-virtualization security solution that is lightweight and will protect virtual machines from a variety of threats.

Which platform should you choose in this scenario?

- A. vSRX
- B. vRR
- C. vEPC
- D. TCX



Correct Answer: A

Section: (none)

Explanation

Explanation/Reference:

QUESTION 49

Your SAN team must transmit FC between multiple locations in a data center. To keep the cost of the project to a minimum, your management decides that using FCoE would be the most cost-effective approach.

In this scenario, which architecture will support FCoE losslessly?

- A. Layer 3 Clos
- B. Virtual Chassis
- C. Virtual Chassis Fabric
- D. VXLAN overlay

Correct Answer: C

Section: (none)

Explanation

Explanation/Reference:

QUESTION 50 Which protocol is used on the VPCs of a Virtual Chassis Fabric?

- A. IEEE 802.1BR
- B. MPLS
- C. VCCP
- D. IS-IS

Correct Answer: C

Section: (none)

Explanation

Explanation/Reference:

QUESTION 51 Which two statements are correct about a VCF deployment?
(Choose two.)

- A. You are allowed up to four spine devices.
- B. The fabric is managed as a single logical device.
- C. An EX4300 switch must be deployed as a spine device.
- D. You must deploy a QFX5100 as a leaf device.

Correct Answer: AB

Section: (none)

Explanation

Explanation/Reference:

QUESTION 52 Which devices are recommended by Juniper Networks as edge routers in a data center?

- A. EX Series
- B. QFX Series
- C. MX Series
- D. CTP Series

Correct Answer: C

Section: (none)

Explanation

Explanation/Reference:

QUESTION 53

You are designing a data center network with a combination of KVM virtual machines and physical QFX Series devices. You require a single Juniper Networks solution for monitoring resource utilization across all devices. In this scenario, which product would satisfy this requirement?

- A. AppFormix
- B. Contrail
- C. JTI
- D. Junos Space

Correct Answer: A

Section: (none)

Explanation

Explanation/Reference:

QUESTION 54 Which two security components are inherent in a Contrail vRouter?
(Choose two.)

- A. basic tenant separation directional control for Layer 3 and Layer 4 traffic
- B. Layer 7 traffic filters
- C. security groups
- D. encapsulation around each VM residing on the compute node

Correct Answer: BC

Section: (none)

Explanation

Explanation/Reference:

QUESTION 55 You are designing an IP fabric using IBGP as your underlay.

In this scenario, which statement is correct?

- A. Confederations are not allowed in an IBGP IP traffic.
- B. Route reflectors should be implemented on your spine devices.
- C. IBGP ensures that traffic will be load balanced by default.
- D. You must ensure that you have a full mesh with all devices.

Correct Answer: B

Section: (none)

Explanation

Explanation/Reference:



QUESTION 56 Which statement is correct about a Junos Fusion Data Center fabric deployment?

- A. Each aggregation device is managed separately.
- B. Each satellite device is managed separately.
- C. At satellite devices are managed and configured by an aggregation device.
- D. All satellite and aggregation devices must be running the same version of Junos OS.

Correct Answer: C

Section: (none)

Explanation

Explanation/Reference:

QUESTION 57 What would you use to balance traffic loads between servers in a Clos Layer 3 data center fabric?

- A. MC-LAG
- B. multicast protocols
- C. ECMP routing
- D. BGP export policies

Correct Answer: C

Section: (none)

Explanation

Explanation/Reference:

QUESTION 58 You want to use the Intrusion Prevention System features of a vSRX virtual firewall to protect systems from attacks embedded in traffic. In this scenario, which three technologies would be used? (Choose three.)

- A. protocol decodes
- B. zero-day protection
- C. traffic normalization
- D. application firewall
- E. application tracking

Correct Answer: BCD

Section: (none)

Explanation

Explanation/Reference:

QUESTION 59 What are two industry-standard high availability features used in data centers? (Choose two.)

- A. IPFIX
- B. separation of control and forwarding planes
- C. graceful restart
- D. Bidirectional Forwarding Detection

Correct Answer: BD

Section: (none)

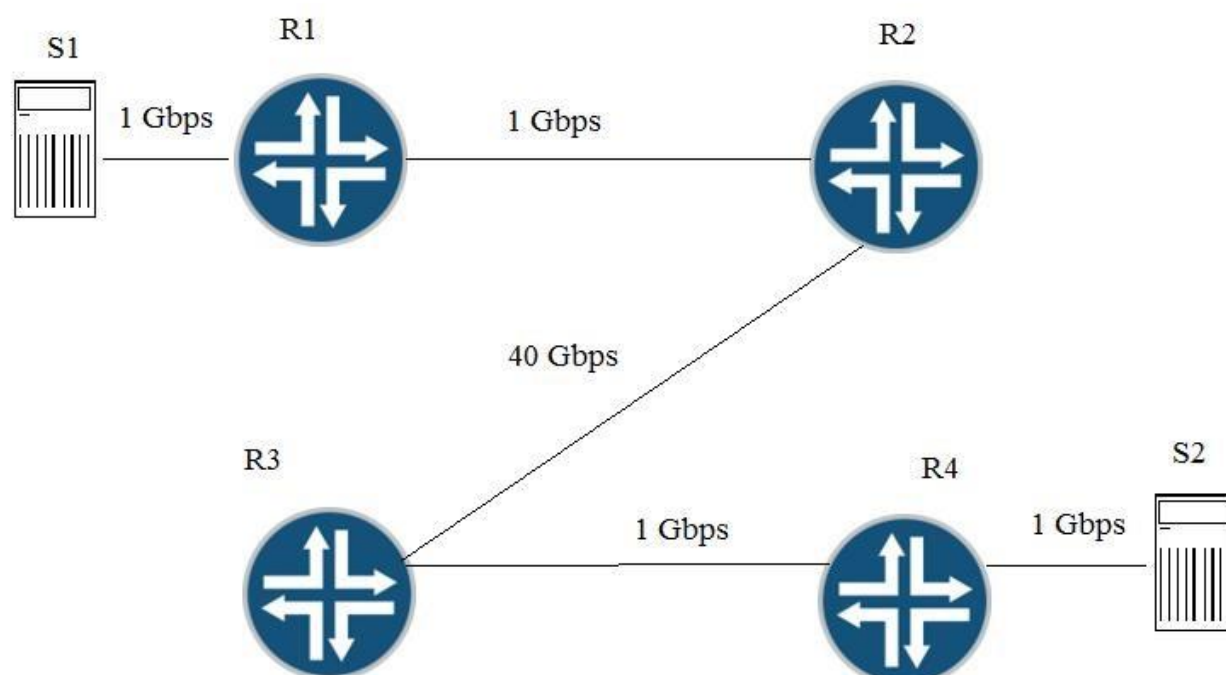
Explanation

Explanation/Reference:



QUESTION 60 Click the Exhibit button.

Traffic congestion has been noticed when S1 is sending traffic to S2. You must design a CoS deployment to address the traffic congestion issue. Referring to the exhibit, which statement is true?



- A. You should deploy CoS on R1 and R4.
- B. You should deploy CoS on R1, R3 and R4.
- C. You should deploy CoS on S1, R1, R2, R3, R4, and S2.
- D. You should deploy CoS on R1, R2, R3, and R4.

Correct Answer: D

Section: (none)

Explanation

Explanation/Reference:



QUESTION 61 When considering data center security, which component is often seen as unimportant but is really the first line of defense?

- A. guest access
- B. native VLAN configuration
- C. RBAC
- D. physical security

Correct Answer: A

Section: (none)

Explanation

Explanation/Reference:

QUESTION 62

A multi-tenant data center requires many thousands of VLANs for their customers. Additionally, they also need real-time data replication and server mobility to a remote backup site.

In this scenario, which solution should they choose?

- A. Virtual Chassis Fabric

- B. Clos IP fabric
- C. IBGP
- D. VXLAN

Correct Answer: D

Section: (none)

Explanation

Explanation/Reference:

QUESTION 63 What is a characteristic of VRRP?

- A. VRRP routers must communicate over a direct connection.
- B. VRRP participating routers all act as active gateways.
- C. VRRP provides high availability for a host's default gateway.
- D. VRRP routes must communicate over a common switch.

Correct Answer: C

Section: (none)

Explanation

Explanation/Reference:

QUESTION 64 You are implementing a Virtual Chassis Fabric using QFX5110 devices.

Which two statements are true in this scenario according to Juniper Networks recommendations? (Choose two.)

- A. Spine devices must assume the RE role.
- B. Leaf devices must have a direct link to all other leaf devices.
- C. Spine devices must assume the line card role.
- D. Leaf devices must have a direct link to all spine devices.

Correct Answer: AD

Section: (none)

Explanation

Explanation/Reference:

QUESTION 65

You are asked to create a new data center based on an IP fabric architecture. The data center must support many segmented applications that require Layer 2 adjacencies. You decide to use EVPN-VXLAN as an overlay technology to accomplish the task. To meet the requirements, each application will be placed in its own VLAN. In this scenario, what is required for communication between VLANs to occur?

- A. IBGP and Q-in-Q
- B. IBGP and MP-BGP
- C. IBGP and MPLS
- D. IBGP and GVRP

Correct Answer: B

Section: (none)

Explanation

Explanation/Reference: