

300-425.VCEplus.premium.exam.61q

Number: 300-425  
Passing Score: 800  
Time Limit: 120 min  
File Version: 1.0



Website: <https://vceplus.com>

VCE to PDF Converter: <https://vceplus.com/vce-to-pdf/>

Facebook: <https://www.facebook.com/VCE.For.All.VN/>

Twitter : [https://twitter.com/VCE\\_Plus](https://twitter.com/VCE_Plus)

300-425

Designing Cisco Enterprise Wireless Networks



# Exam A

## QUESTION 1

### DRAG DROP

Drag and drop the characteristics from the left onto the correct functionalities on the right.

Select and Place:

complex configuration on the Cisco WLC and infrastructure	Multiple AP-Manager Interfaces
achieves optimal AP join process with src-dst-ip load-balancing	
simple configuration on the Cisco WLC and infrastructure	LAG
avoids single point of failure on neighbor switches	

Correct Answer:

complex configuration on the Cisco WLC and infrastructure	Multiple AP-Manager Interfaces
achieves optimal AP join process with src-dst-ip load-balancing	avoids single point of failure on neighbor switches
simple configuration on the Cisco WLC and infrastructure	simple configuration on the Cisco WLC and infrastructure
avoids single point of failure on neighbor switches	LAG
	complex configuration on the Cisco WLC and infrastructure
	achieves optimal AP join process with src-dst-ip load-balancing

Section: (none)

**Explanation**

**Explanation/Reference:**

**QUESTION 2** Which UDP port numbers are used for exchange mobility packets in an AireOS wireless deployment?

- A. UDP 16666 for control plane, EoIP (IP protocol 97) for data plane
- B. UDP 16668 for control plane, UDP 16667 for data plane
- C. UDP 16667 for control plane, UDP 16666 for data plane
- D. UDP 16666 for control plane, UDP 16667 for data plane

**Correct Answer:** D

**Section:** (none)

**Explanation**

**Explanation/Reference:**

**QUESTION 3**

A customer asks an engineer to explain the concept of mobility domains and mobility groups. Which statement does the engineer respond with?

- A. A mobility group does not constrain the distribution of security context of a client and also does not constrain AP fail-over between controllers when the WLC are in the same mobility domain.
- B. If WLCs are in the same mobility domain, they communicate with each other but, if an anchor WLC is present it must be in the same mobility domain for communication to be possible.
- C. If WLCs are in the same mobility domain, they communicate with each other. Mobility groups constrain the distribution of security context of a client and also constrain AP fail-over between controllers.
- D. WLCs do not need to be in the same mobility domain to communicate with each other. Mobility groups constrain the distribution of security context of a client and also constrain AP fail-over between controllers.

**Correct Answer:** C

**Section:** (none)

**Explanation**



**Explanation/Reference:**

**QUESTION 4** An engineer is designing a wireless deployment for a university auditorium. Which two features can be used to help deal with the issues introduced by high AP count? (Choose two.)

- A. TSPEC
- B. RXSOP
- C. TPC
- D. LSS
- E. DFS

**Correct Answer:** CE

**Section:** (none)

**Explanation**

**Explanation/Reference:**

**QUESTION 5**

A wireless engineer is designing a wireless network to support real-time applications over wireless. Which IEEE protocol must the engineer enable on the WLC so that the number of packets that are exchanged between an access point and client are reduced and fast roaming occurs?

- A. 802.11w
- B. 802.11r
- C. 802.11i
- D. 802.11k

**Correct Answer:** D

**Section:** (none)

**Explanation**

**Explanation/Reference:**

**QUESTION 6**

A network administrator of a global organization is collapsing all controllers to a single cluster located in central Europe. Which concern must be addressed?

- A. Some channels may not be available consistently across the organization.
- B. Different RF policies per office are not available in this configuration.
- C. Syslog must be configured to the time-zone of the NMS platform.
- D. Centralized controllers cannot uniformly authenticate global users.

**Correct Answer:** C

**Section:** (none)

**Explanation**

**Explanation/Reference:**

**QUESTION 7** An engineer must ensure that the new wireless LAN deployment can support seamless roaming between access points using a standard based on an amendment to the 802.11 protocol. Which protocol must the engineer select?

- A. 802.11i
- B. 802.11ac
- C. 802.11r
- D. 802.11e



**Correct Answer:** C

**Section:** (none)

**Explanation**

**Explanation/Reference:**

**QUESTION 8** A high-density wireless network is designed. Which Cisco WLC configuration setting must be incorporated in the design to encourage clients to use the 5 GHz spectrum?

- A. Band Select
- B. RRM
- C. Cisco Centralized Key Management
- D. load balancing

**Correct Answer:** A

**Section:** (none)

**Explanation**

**Explanation/Reference:**

**QUESTION 9**

A network engineer is preparing for an office site survey with a height of 2.5 meters. Which three components are recommended to complete the survey? (Choose three.)

- A. Use a battery pack to power APs
- B. Use a drawing of the office space to draw AP and client placements.
- C. Use DoS attack on APs while measuring the throughput.

- D. Use APs with directional antennas.
- E. Use APs with external antennas.
- F. Use APs with built-in antennas.

**Correct Answer:** ABF

**Section:** (none)

**Explanation**

**Explanation/Reference:**

#### QUESTION 10

A wireless engineer must optimize RF performance for multiple buildings with multiple types of construction and user density. Which two actions must be taken? (Choose two.)

- A. Configure FlexConnect groups for each building.
- B. Configure WMM profiles for each building.
- C. Configure AP groups for each area type.
- D. Configure RF profiles for each area type.
- E. Enable DTPC on the network.

**Correct Answer:** CD

**Section:** (none)

**Explanation**

**Explanation/Reference:**

#### QUESTION 11

A wireless engineer is hired to design a network for a technology company. The company campus has four buildings and a warehouse with access points that provide full wireless coverage as well as a pair of WLCs located in the core of the network. Which type of wireless architecture is being used?

- A. unified deployment
- B. autonomous deployment
- C. centralized deployment
- D. distributed deployment

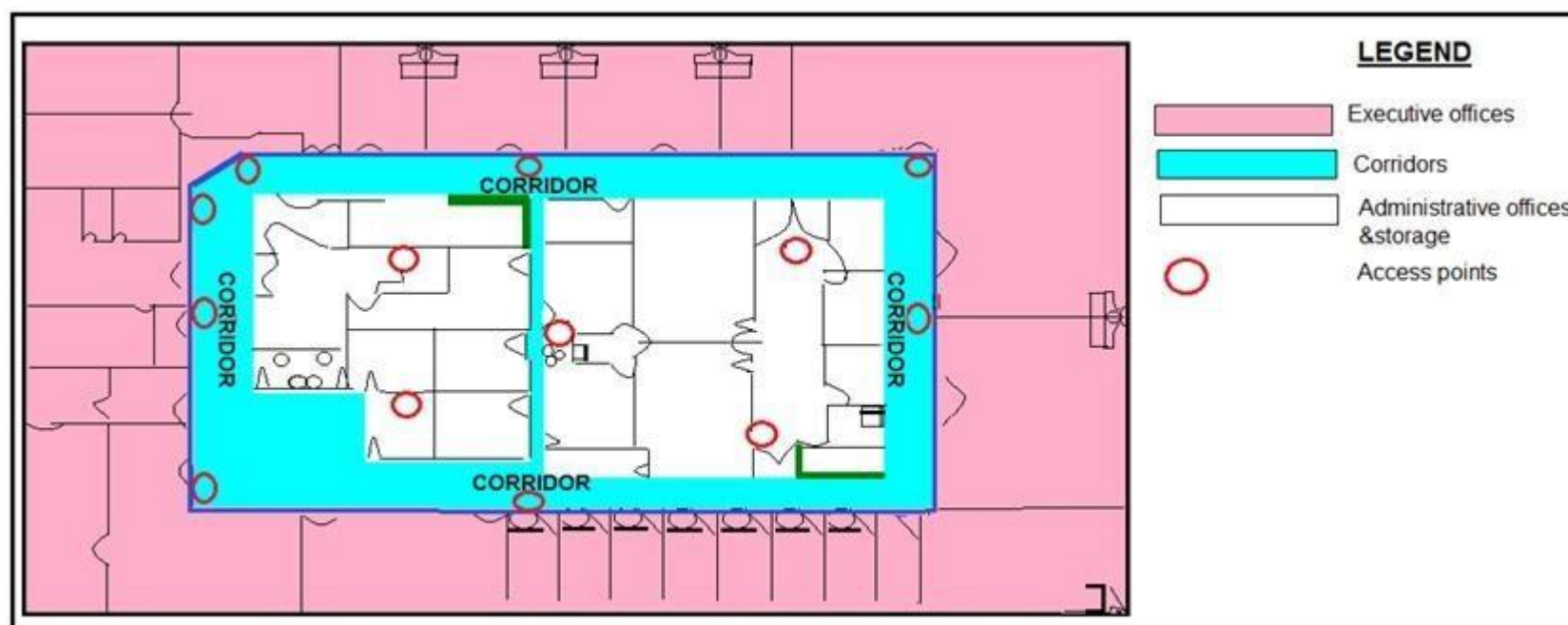
**Correct Answer:** C

**Section:** (none)

**Explanation**

**Explanation/Reference:**

#### QUESTION 12



Refer to the exhibit. What is the main reason why the Wi-Fi design engineer took a different approach than installing the APs in the offices, even though that installation provides better coverage?

- A. aesthetics
- B. transmit power considerations
- C. antenna gain
- D. power supply considerations

**Correct Answer:** B

**Section:** (none)

**Explanation**

**Explanation/Reference:**

#### QUESTION 13

Where must the APs be mounted when used in a high-density wireless network to provide 6 dB to 20 dB of attenuation to a cell?

- A. in the aisle
- B. under the seat
- C. above the stage
- D. under the stage

**Correct Answer:** B

**Section:** (none)

**Explanation**

**Explanation/Reference:**

#### QUESTION 14

A company wants to replace its existing PBX system with a new VoIP System that will include wireless IP phones. The CIO has concerns about whether the company's existing wireless network can support the new system. Which tool in Cisco Prime can help ensure that the current network will support the new phone system?

- A. Location Readiness
- B. Site Calibration
- C. Map Editor

D. Voice Readiness

**Correct Answer:** D

**Section:** (none)

**Explanation**

**Explanation/Reference:**

**QUESTION 15**

A rapidly expanding company has tasked their network engineer with wirelessly connecting a new cubicle area with Cisco workgroup bridges until the wired network is complete. Each of 42 new users has a computer and VoIP phone. How many APs for workgroup bridging must be ordered to keep cost at a minimum while connecting all devices?

- A. 4
- B. 5
- C. 6
- D. 7

**Correct Answer:** A

**Section:** (none)

**Explanation**

**Explanation/Reference:**

**QUESTION 16**

Which two considerations must a network engineer have when planning for voice over wireless roaming? (Choose two.)

- A. Full reauthentication introduces gaps in a voice conversation.
- B. Roaming time increases when using 802.1x + Cisco Centralized Key Management.
- C. Roaming occurs when the phone has seen at least four APs.
- D. Roaming occurs when the phone has reached -80 dBs or below.
- E. Roaming with only 802.1x authentication requires full reauthentication.



**Correct Answer:** AE

**Section:** (none)

**Explanation**

**Explanation/Reference:**

**QUESTION 17** An engineer is designing a wireless network that will support many different types of wireless clients. When conducting the survey, which client must be used to ensure a consistent experience for all of the wireless clients?

- A. the client that has the highest RF properties
- B. the client that is used most by the company
- C. the client that is used least by the company
- D. the client with the worst RF characteristics

**Correct Answer:** B

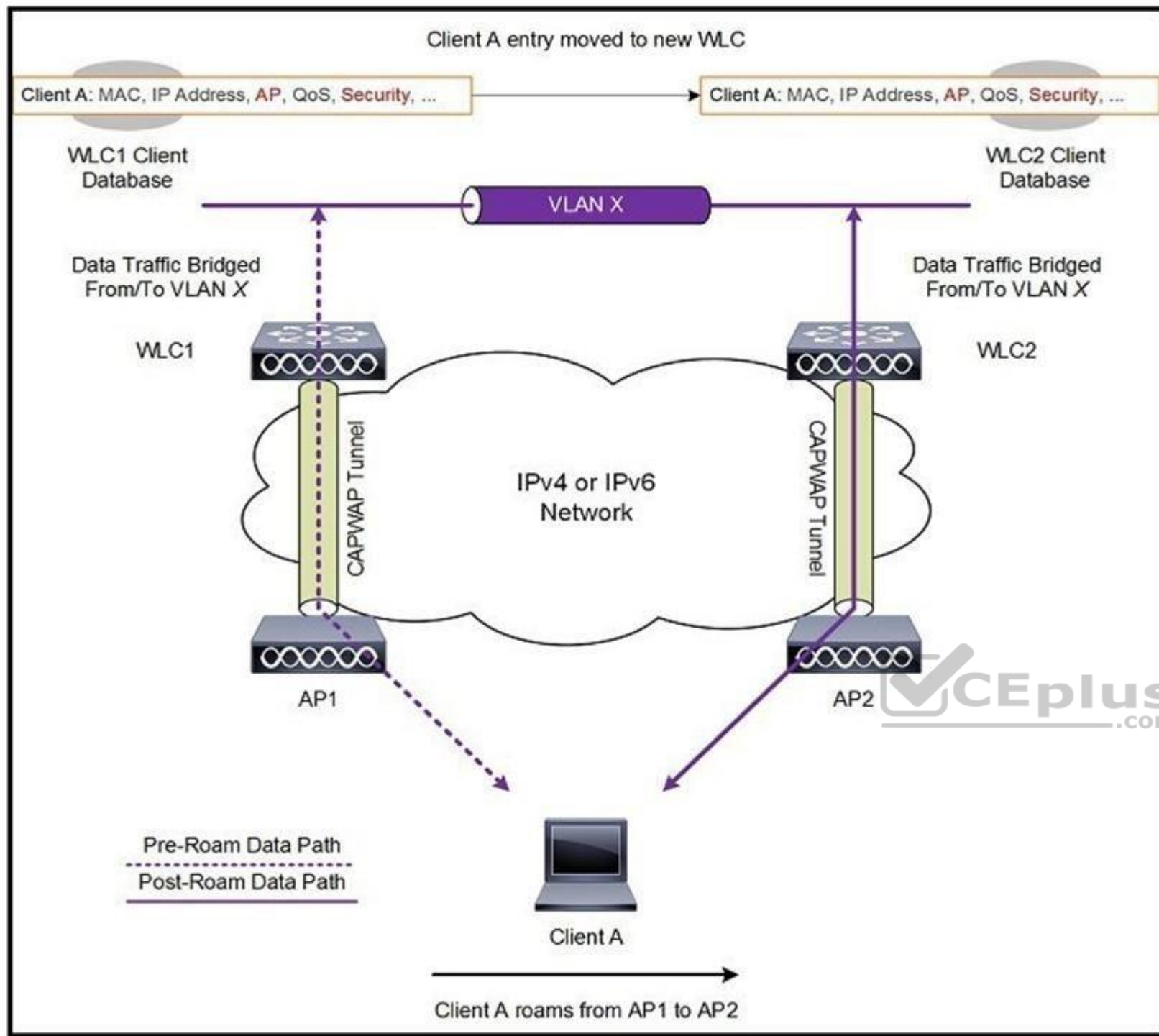
**Section:** (none)

**Explanation**

**Explanation/Reference:**

**QUESTION 18**





Refer to the exhibit. A client roams between two APs that are registered to two different controllers, where each controller has an interface in the client subnet. Both controllers are running AireOS. Which scenario explains the client roaming behavior?

- A. Controllers exchange mobility control messages (over UDP port 16666) and the client database entry is moved from the original controller to the new controller.
- B. Controllers do not exchange mobility control messages (over UDP port 16666) and the client database entry is not moved from the original controller to the new controller.
- C. Controllers exchange mobility control messages (over UDP port 16666) and a new client session is started with the new controller.
- D. Controllers exchange mobility control messages (over UDP port 16666) and the client database entry is tunneled from the original controller to the new controller.

**Correct Answer:** A

**Section:** (none)

**Explanation**



**Explanation/Reference:**

**QUESTION 19** An engineer has performed a predictive site survey for high-speed data and voice in an indoor office. What is the recommended data rate with -67 dBm signal level for optimal VoWLAN design?

- A. 6 Mbps on 802.11 bgn
- B. 24 Mbps on 802.11 bgn
- C. 12 Mbps on 802.11 an
- D. 24 Mbps on 802.11 an

**Correct Answer:** B

**Section:** (none)

**Explanation**

**Explanation/Reference:****QUESTION 20**

An engineer has configured guest anchoring for a newly created SSD however, the mobility tunnels are not up, and EPING is failing from the foreign WLC to the anchor WLC. Which traffic flow must be allowed at the firewall to enable the communication?

- A. UDP port 16666
- B. IP protocol 97
- C. UDP port 97
- D. TCP port 97

**Correct Answer:** A

**Section:** (none)

**Explanation**

**Explanation/Reference:**

**QUESTION 21** Which statement about creating a mobility group is true, excluding mobility anchors?

- A. Each WLC must use the same mobility name and be defined as a peer in each other's static mobility members list.
- B. If WLCs with HA SSO are deployed, each WLC in the WLC HA pair considered separately as a mobility peer.
- C. The WLCs do not have to be of the same model or type to be a member of a mobility group, however each member should be running different software versions.
- D. A mobility groups does not require all WLCs in the group to use the same virtual IP address.

**Correct Answer:** B

**Section:** (none)

**Explanation**

**Explanation/Reference:**

**QUESTION 22** A wireless network consultant must assess an existing wireless LAN controller. Which section must the consultant check before replacing the old APs with APs that are IEEE 802.11ac-capable?

- A. number of AP licenses
- B. controller PSU
- C. throughput capacity
- D. software version

**Correct Answer:** A

**Section:** (none)

**Explanation****Explanation/Reference:****QUESTION 23**

A customer is concerned about mesh backhaul link security. Which level of encryption does the backhaul link use?

- A. hash
- B. AES
- C. WEP
- D. 3DES

**Correct Answer:** B

**Section:** (none)

**Explanation****Explanation/Reference:****QUESTION 24**

Clustering Cisco WLCs into a single RF group enables the RRM algorithms to scale beyond the capabilities of a single Cisco WLC. How many WLC and APs in an RF group can the controller software scale up to in WLC release 8.9 depending on the platform?

- A. up to 20 WLCs and 1000 APs
- B. up to 20 WLCs and 3000 APs
- C. up to 20 WLCs and 4000 APs
- D. up to 20 WLCs and 6000 APs

**Correct Answer:** D

**Section:** (none)

**Explanation****Explanation/Reference:****QUESTION 25**

An engineer must create data link redundancy for the company's Cisco Wireless LAN controller. The engineer has decided to configure LAG-based redundancy instead of port-based redundancy. Which three features of LAG-based redundancy influenced this decision? (Choose three.)

- A. Packets are always sent out on the same port they are received on.
- B. All interface traffic passes as long as one port is up.
- C. The same port has multiple untagged dynamic interfaces.
- D. Interface connection to two separate nonstacked switches is available.
- E. Full bandwidth of all links is available.
- F. Ports are grouped into multiple LAGs.

**Correct Answer:** ABF

**Section:** (none)

**Explanation****Explanation/Reference:**

**QUESTION 26** An engineer must speed up the reauthentication delays that are being experienced on the wireless infrastructure by deploying a key-caching mechanism. Which mechanism must be configured?

- A. PEAP



- B. FT
- C. PMF
- D. GTK-randomization

**Correct Answer:** B

**Section:** (none)

**Explanation**

**Explanation/Reference:**

#### QUESTION 27

A customer is running a guest WLAN with a foreign/export-anchor setup. There is one anchor WLC in the US and two in Europe. Anchor WLC priorities are used to prefer local anchors. During a routine network audit, it is discovered that a large number of guest client sessions in the US are anchored to the WLCs in Europe. Which reason explains this behavior?

- A. The foreign WLC failed and recovered.
- B. The US anchor WLC failed and recovered.
- C. The US anchor WLC is anchored to itself with a priority value of zero.
- D. The anchor WLC is in the same mobility group.

**Correct Answer:** B

**Section:** (none)

**Explanation**

**Explanation/Reference:**

**QUESTION 28** Which non-Wi-Fi interferer can be identified by Metageek Chanalyzer?

- A. PDAs
- B. jammers
- C. smartphones
- D. printers

**Correct Answer:** B

**Section:** (none)

**Explanation**

**Explanation/Reference:**

#### QUESTION 29

Which statement about the 9800 Series Wireless Controller mobility tunnel on a Cisco Catalyst 9800 controller is true?

- A. It is an IPsec tunnel with control path only.
- B. It is a CAPWAP tunnel with data path only.
- C. It is a CAPWAP tunnel with control path and data path.
- D. It is an IPsec tunnel with control path and data path.

**Correct Answer:** B

**Section:** (none)

**Explanation**

**Explanation/Reference:**

#### QUESTION 30

An engineer has successfully configured high availability and SSO using two Cisco 5508 Wireless LAN Controllers. The engineer can access the Active Primary WLC, but the Secondary Standby WLC is not accessible. Which two methods allow access to the standby unit? (Choose two.)

- A. via the console connection
- B. SSH to the redundancy management interface of the primary WLC
- C. SSH to the service port interface
- D. SSH to the virtual interface of the secondary WLC
- E. SSH to the management interface of the primary WLC

**Correct Answer:** AC

**Section:** (none)

**Explanation**

**Explanation/Reference:**

**QUESTION 31** As part of a wireless site survey in a hospital, an engineer needs to identify potential Layer 1 interferers. In which two areas is the engineer most likely to find sources of 2.4 GHz and 5 GHz RF noise? (Choose two.)

- A. magnetic resonance imaging
- B. kitchen
- C. Gamma Knife radiation treatment
- D. X-ray radiography
- E. patient room

**Correct Answer:** BE

**Section:** (none)

**Explanation**

**Explanation/Reference:**



**QUESTION 32** What is the recommended cell overlap when designing a wireless network for Cisco Hyperlocation?

- A. 20%
- B. 30%
- C. 40%
- D. 50%

**Correct Answer:** A

**Section:** (none)

**Explanation**

**Explanation/Reference:**

**QUESTION 33**

An engineer must create data-link redundancy for the company's Cisco Wireless LAN Controller. The engineer has decided to configure LAG-based redundancy instead of port-based redundancy. Which three features of LAG-based redundancy influenced this decision? (Choose three.)

- A. Packets are always sent out on the same port they are received on.
- B. All interface traffic passes as long as one port is up.
- C. The same port has multiple untagged dynamics interfaces.
- D. Interface connection to two separate nonstacked switches is available.
- E. Full bandwidth of all links is available.
- F. Ports are grouped into multiple LAGs.

**Correct Answer:** ABF

**Section:** (none)

**Explanation**

**Explanation/Reference:**

**QUESTION 34**

An engineer is performing a predictive wireless design for a medical treatment environment, which requires data and voice services. What is the minimum requirement for the design?

- A. overlapping -72 dBm coverage from two access points
- B. continuous -67 dBm coverage from one access point
- C. continuous -72 dBm coverage from one access point
- D. overlapping -67 dBm coverage from two access points

**Correct Answer:** B

**Section:** (none)

**Explanation**

**Explanation/Reference:**

**QUESTION 35** A wireless engineer is designing a wireless network for a warehouse using access points with internal antennas. Which two elements have a negative effect on the wireless users? (Choose two.)

- A. wireless channels
- B. access point height
- C. client authentication
- D. client authorization
- E. absorption



**Correct Answer:** BE

**Section:** (none)

**Explanation**

**Explanation/Reference:**

**QUESTION 36**

Which statement about AP failover priority for access points when configured with priority 1 or 4 is true?

- A. When configured with priority 1, the access point is assigned with the highest priority level and it is marked as critical. This access point fails over before other access points with the lower priority when there is primary controller failure.
- B. When configured with priority 4, the access point is assigned with the highest priority level and it is marked as critical. This access point fails over before other access points with the lower priority when there is primary controller failure.
- C. When configured with priority 4, the access point is assigned with the lowest priority level and it is marked as low. This access point fails over after other access points with the higher priority when there is primary controller failure.
- D. When configured with priority 1, the access point is assigned with the medium priority level and it is marked as medium. This access point fails over after other access points with the higher priority when there is primary controller failure.

**Correct Answer:** B

**Section:** (none)

**Explanation**

**Explanation/Reference:**

**QUESTION 37** An engineer must ensure that the wireless network can accomplish fast secure roaming by way of caching keys on the access points. Which key caching mechanism is enabled by default on a Cisco AireOS WLC?

- A. SKC
- B. OKC

- C. 802.11r
- D. CCKM

**Correct Answer:** D

**Section:** (none)

**Explanation**

**Explanation/Reference:**

**QUESTION 38**

A technician connects a Cisco Aironet 3700 Series access point to a switch and realizes that the AP is coming up with 3x3 MIMO. Which reason explains this behavior?

- A. A redundant power supply is unavailable on the switch.
- B. The switch is 802.3af capable.
- C. The AP is getting power from a power injector.
- D. The switch is PoE+ capable.

**Correct Answer:** D

**Section:** (none)

**Explanation**

**Explanation/Reference:**

**QUESTION 39** A network engineer is working on a design for a wireless network that must support data, voice, and location services. To support these services, which access point placement must the engineer use?

- A. corner only
- B. perimeter and corner
- C. perimeter only
- D. indoor and outdoor



**Correct Answer:** C

**Section:** (none)


**Explanation**

**Explanation/Reference:**

**QUESTION 40**



Name Prefix 
Add APs: 
AP Type: 
Enable 11n Support: ☐
802.11a/n/ac Antenna: 
802.11b/g/n Antenna: 
Protocol: 
Throughput: 802.11a/n/ac  802.11b/g/n 
Services: ☒ Advanced Options
☒ Data/Coverage
Safety Margin: 
☒ Voice
Safety Margin: 
☒ Location
☐ Location with Monitor Mode APs
☐ Demand
☐ Override Coverage Per AP
Per AP Area0 (sq feet)
Total Coverage Area 179312 (sq feet)
Recommended AP Count 74
Data/Coverage 48
Voice 48
Location 59
Location with Monitor Mode APs
Demand

Floor Type: Cubes and Walled Offices
Add APs Automatically:
Realize and move the rectangle using the mouse over the desired coverage area, then specify placement criteris. Click "Calculate" to determine the number of APs recommended by NCS. If you are satisfied with the result, press "Apply". APs will be created and automatically positioned on the map.


Refer to the exhibit. Which two statements about Cisco Prime Infrastructure are true? (Choose two.)

- A. It presents the recommended number of APs for the selected coverage area based on the selections made.
- B. Planning mode requires a special license in Cisco Prime Infrastructure.
- C. It shows the map editor feature in Cisco Prime Infrastructure.
- D. Controllers must be synchronized with Cisco Prime Infrastructure for planning mode to work.
- E. It shows the planning mode feature in Cisco Prime Infrastructure.

**Correct Answer:** DE

**Section:** (none)

**Explanation**

**Explanation/Reference:**

**QUESTION 41** A customer has noticed that Client Band Select is enabled and no clients are utilizing the 5 GHz band. Which three parameters must be met to ensure that wireless clients use the 5 GHz band? (Choose three.)

- A. Ensure that channel bonding is enabled on the WLAN.
- B. Ensure that the co-channel interference has not exceeded -85 dBm.
- C. Ensure that the UNII-2 extended channels are enabled on the 802.11a radios.
- D. Ensure that the client is receiving RSSI above the minimum band select RSSI threshold.
- E. Ensure that the client is dual-band capable.
- F. Ensure that the WLAN has 802.11a enabled.

**Correct Answer:** CDE

**Section:** (none)

**Explanation**

**Explanation/Reference:**

**QUESTION 42**

A wireless engineer is performing a post verification of a wireless network. Which two metrics does the engineer verify to ensure that the wireless network can support voice services? (Choose two.)

- A. The coverage area must have a noise floor that does not exceed -87 dBm.
- B. The client device must have at least an -67 dBm RSSI.
- C. The rate of retransmitted packets must be 15 percent or below.
- D. The rate of retransmitted packets must be 20 percent or below.
- E. The client device must have at least an -65 dBm RSSI.

**Correct Answer:** BC

**Section:** (none)

**Explanation**

**Explanation/Reference:**



**QUESTION 43**

Which three pieces of equipment are needed to conduct a fully measured wireless survey? (Choose three.)

- A. PoE battery
- B. spirit level
- C. access point
- D. tall tripod
- E. goggles
- F. ladder

**Correct Answer:** ACD

**Section:** (none)

**Explanation**

**Explanation/Reference:**

**QUESTION 44**

A company has 10 access point licenses available on their backup Cisco WLC and their primary Cisco WLC is at full capacity, 5 access points are set to high failover priority and 7 access points are set to critical failover priority. During a failure, not all critical access points failed over to the backup Cisco WLC. Which configuration is the cause of this issue?

- A. The high priority access point is oversubscribed.
- B. network ap-priority is set to enable.
- C. The critical priority access point count is oversubscribed.

D. network ap-priority is set to disable.

**Correct Answer:** A

**Section:** (none)

**Explanation**

**Explanation/Reference:**

**QUESTION 45** Which CLI command does an engineer use to validate that the redundancy peer of a Stateful Switchover pair of controllers is up and connected?

- A. **rping**
- B. **ping**
- C. **eping**
- D. **mping**

**Correct Answer:** B

**Section:** (none)

**Explanation**

**Explanation/Reference:**

**QUESTION 46** An engineer must decide the cell overlap for a wireless voice deployment. Which Cisco measurement recommendation should be considered?

- A. The edge of the cell should be -67 dBm.
- B. The edge of the cell should be below 35 RSSI.
- C. The measurement should be done on the 2.4-GHz band.
- D. One AP should be deployed per 3000 square feet.



**Correct Answer:** A

**Section:** (none)

**Explanation**

**Explanation/Reference:**

**QUESTION 47** A network engineer is configuring high availability on an access point. What is the maximum number of controllers that can be configured?

- A. 1
- B. 2
- C. 3
- D. 4

**Correct Answer:** B

**Section:** (none)

**Explanation**

**Explanation/Reference:**

**QUESTION 48**

An engineer must configure the virtual IP address on multiple controllers in a mobility group. Which rule must the engineer follow to ensure proper roaming?

- A. Ensure that the DNS entry is tied to the virtual IP address of the WLC.
- B. Use a unique IP address for each WLC.

- C. Ensure that the DNS Host Name field is defined.
- D. Use the same IP address for each WLC.

**Correct Answer:** A

**Section:** (none)

**Explanation**

**Explanation/Reference:**

**QUESTION 49** A wireless engineer is utilizing the voice readiness tool in Cisco Prime for a customer that wants to deploy Cisco IP phones. Which dBm range is the network inspected against?

- A. -78 to -65 dBm B. -72 to -67 dBm C. -85 to -65 dBm
- D. -85 to -67 dBm

**Correct Answer:** D

**Section:** (none)

**Explanation**

**Explanation/Reference:**

**QUESTION 50**

An engineer is reducing the subnet size of the corporate WLAN by segmenting the VLAN into smaller subnets. Clients will be assigned a subnet by location. Which type of groups can the engineer use to map the smaller subnets to the corporate WLAN?

- A. WLC port groups
- B. RF groups
- C. AP groups
- D. interface groups



**Correct Answer:** D

**Section:** (none)

**Explanation**

**Explanation/Reference:**

**QUESTION 51**

When conducting a site survey for real-time traffic over wireless, which two design capabilities of smartphones and tablets must be considered? (Choose two.)

- A. no support for 802.11ac
- B. higher data rates than laptops
- C. fewer antennas than laptops
- D. no support for 802.11r
- E. lower data rates than laptops

**Correct Answer:** BC

**Section:** (none)

**Explanation**

**Explanation/Reference:**

**QUESTION 52**

A customer has determined that aesthetics is a primary concern for their upcoming guest deployment. Which design consideration can be leveraged to address this concern?

- A. Paint the access point to cover the LED from being noticeable.
- B. Use enclosures to hide the wireless infrastructure in the surrounding environment.
- C. Use AIR-AP-BRACKET-1 to allow for greater mounting locations
- D. Deploy environmentally friendly cabling components to blend into the environment.

**Correct Answer:** D

**Section:** (none)

**Explanation**

**Explanation/Reference:**

**QUESTION 53** An engineer has deployed a group of APs in an auditorium and notices that the APs are showing high co-channel interference. Which profile can be used to adjust the parameters for these high-density APs?

- A. QoS profile
- B. AVC profile
- C. RF profile
- D. ISE profile

**Correct Answer:** A

**Section:** (none)

**Explanation**

**Explanation/Reference:**

**QUESTION 54** Guest anchoring is configured for a newly created SSID for your company. It has been noticed that the mobility tunnels are not up, and that MPING fails from your foreign WLC to the anchor WLC. What is the reason that it is failing?

- A. A rule is needed at the firewall to allow UDP port 16666 for communication to work.
- B. A rule is needed at the firewall to allow UDP port 97 for communication to work.
- C. A rule is needed at the firewall to allow TCP port 97 for communication to work.
- D. A rule is needed at the firewall to allow TCP port 16666 for communication to work.

**Correct Answer:** A

**Section:** (none)

**Explanation**

**Explanation/Reference:**

**QUESTION 55**

A wireless deployment in a high-density environment is being used by vendors to process credit card payment transactions via handheld mobile scanners. The scanners are having problems roaming between access points in the environment. Which feature on the wireless controller should have been incorporated in the design?

- A. RX SOP
- B. 802.11w
- C. AP Heartbeat Timeout
- D. Application Visibility Control

**Correct Answer:** A

**Section:** (none)

**Explanation**

**Explanation/Reference:**

**QUESTION 56** A university is in the process of designing a wireless network in an auditorium that seats 500 students and supports student laptops. Which design methodology should the university implement in the auditorium?

- A. roaming design model
- B. voice design model
- C. location design model
- D. high-density design model

**Correct Answer:** B

**Section:** (none)

**Explanation**

**Explanation/Reference:**

**QUESTION 57** What causes the most signal attenuation, based on the wireless design tools?

- A. cinder block wall
- B. metal door
- C. glass wall
- D. office window

**Correct Answer:** B

**Section:** (none)

**Explanation**

**Explanation/Reference:**

**QUESTION 58** During a client roaming event, which device is responsible for communicating the new Layer 2 EID mapping of a wireless supplicant to the fabric domain?

- A. WLC
- B. BN
- C. CP2
- D. CP1

**Correct Answer:** A

**Section:** (none)

**Explanation**

**Explanation/Reference:**

**QUESTION 59**

Multiple WLCs are implemented in a high-availability configuration in a mobility group. APs are deployed with only a primary controller assigned. By default, which mobility group member controller do the orphaned APs join in the event of a failed controller?

- A. controller with the most available AP free license capacity
- B. controller with the lowest percent of associated APs per license capacity
- C. controller with the least CPU utilization over the last reporting period
- D. controller with the least number of associated APs

**Correct Answer:** D

**Section:** (none)

**Explanation**



**Explanation/Reference:**

**QUESTION 60** Which two criteria must be considered when conducting an outdoor bridge site survey? (Choose two.)

- A. near-far effect
- B. weather
- C. traffic lights
- D. power lines
- E. Fresnel zone

**Correct Answer:** AD

**Section:** (none)

**Explanation**

**Explanation/Reference:**

**QUESTION 61**

A customer has two Cisco 550B WLCs that manage all the access points in their network and provide N+1 redundancy and load balancing. The primary Cisco WLC has 60 licenses and the secondary Cisco WLC has 40. The customer wants to convert the N+1 model to an HA model and provide SSO. Configuration must be performed during a maintenance window. After performing all the configurations on both controllers, the **config redundancy unit secondary** command is issued on the secondary Cisco WLC and it fails. Which parameter needs to be in place to complete the configuration?

- A. A cable in the RP port
- B. The secondary Cisco WLC needs a minimum of 50 base licenses
- C. The primary Cisco WLC is already set as the secondary unit.
- D. SSO needs to be enabled

**Correct Answer:** B

**Section:** (none)

**Explanation**

**Explanation/Reference:**