

500-220.VCEplus.premium.exam.57q

Number: 500-220
Passing Score: 800
Time Limit: 120 min
File Version: 1.0



Website: <https://vceplus.com> - <https://vceplus.co>
VCE to PDF Converter: <https://vceplus.com/vce-to-pdf/>
Facebook: <https://www.facebook.com/VCE.For.All.VN/>
Twitter : https://twitter.com/VCE_Plus

500-220

Engineering Cisco Meraki Solutions



Exam A

QUESTION 1

DRAG DROP

Drag and drop the descriptions from the left onto the corresponding MX operation mode on the right.

Select and Place:

The MX appliance acts as a layer 2 bridge	Routed mode
This mode is the default mode of operation	
DHCP services can be configured on the MX appliance	
VLANs cannot be configured	
This mode is generally also the default gateway for devices on the LAN	Passthrough mode
This mode is not recommended at the network perimeter	
No address translation is provided	
Client traffic to the internet has the source IP rewritten to match the WAN IP of the appliance	

Correct Answer:

The MX appliance acts as a layer 2 bridge	Routed mode
This mode is the default mode of operation	Client traffic to the internet has the source IP rewritten to match the WAN IP of the appliance
DHCP services can be configured on the MX appliance	VLANs cannot be configured
VLANs cannot be configured	This mode is the default mode of operation
This mode is generally also the default gateway for devices on the LAN	This mode is generally also the default gateway for devices on the LAN
This mode is not recommended at the network perimeter	Passthrough mode
No address translation is provided	The MX appliance acts as a layer 2 bridge
Client traffic to the internet has the source IP rewritten to match the WAN IP of the appliance	DHCP services can be configured on the MX appliance
	This mode is not recommended at the network perimeter
	No address translation is provided

Section: (none)

Explanation

Explanation/Reference:

QUESTION 2

When an SSID is configured with Sign-On Splash page enabled, which two settings must be configured for unauthenticated clients to have full network access and not be allow listed? (Choose two.)

- A. Controller disconnection behavior
- B. Captive Portal strength
- C. Simultaneous logins
- D. Firewall & traffic shaping
- E. RADIUS for splash page settings

Correct Answer: AB

Section: (none)

Explanation

Explanation/Reference:

Reference: https://documentation.meraki.com/MR/Access_Control

QUESTION 3

Uplink selection

Global preferences

Primary uplink WAN 1 ▾

Load balancing

☐ Enabled

Traffic will be spread across both uplinks in the proportions specified above.

Management traffic to the Meraki cloud will use the primary uplink.

☒ Disabled

All Internet traffic will use the primary uplink unless overridden by an uplink preference or if the primary uplink fails.

Active-Active AutoVPN

☒ Enabled

Create VPN tunnels over all of the available uplinks (primary and secondary).

☐ Disabled

Do not create VPN tunnels over the secondary uplink unless the primary uplink fails.

Flow preferences

Internet traffic

There are no uplink preferences for Internet traffic configured on this network.

[Add a preference](#)

SD-WAN policies

VPN traffic

Uplink selection policy

Use the uplink that's best for VoIP traffic.

Prefer WAN 2. Fail over if poor performance for "Conf"

[Add a preference](#)

Traffic filters

All VoIP & video conferencing

WebEx

Actions

+ ×

+ ×

Custom performance

classes ⊙

Name	Maximum latency (ms)	Maximum jitter (ms)	Maximum loss (%)	Actions
Conf	200	50	5	×

[Create a new custom performance class](#)



Refer to the exhibit. Assuming this MX has established a full tunnel with its VPN peer, how will the MX route the WebEx traffic?

- A. WebEx traffic will prefer WAN 2 as long as it meets the thresholds in the "Conf" performance class.
- B. WebEx traffic will prefer WAN 1 as it is the primary uplink.
- C. WebEx traffic will prefer WAN 2 as long as it is up.
- D. WebEx traffic will be load-balanced between both active WAN links.

Correct Answer: B

Section: (none)

Explanation

Explanation/Reference:

QUESTION 4 For which two reasons can an organization become "Out of License"?

(Choose two.)

- A. licenses that are in the wrong network
- B. more hardware devices than device licenses
- C. expired device license
- D. licenses that do not match the serial numbers in the organization
- E. MR licenses that do not match the MR models in the organization

Correct Answer: BC


Section: (none)

Explanation

Explanation/Reference:

Reference: https://documentation.meraki.com/General_Administration/Licensing/Meraki_Licensing_FAQs

QUESTION 5



Meraki

NETWORK

EMEAR-TRAINER-DEMO

Network-wide

Security & SD-WAN

Switch

Wireless

Cameras

Insight

Organization

SD-WAN & traffic shaping

Uplink configuration

WAN 1

4 Gbps

details

WAN 2

4 Gbps

details

Cellular

Unlimited

details

Uplink statistics

Test connectivity to	Description	Default	Actions
8.8.8.8	Google	<input checked="" type="radio"/>	<input type="button" value="X"/>
Add a destination			

List update interval

WAN 1

Hourly

WAN 2

Hourly

Cellular

Hourly

simple

Uplink selection

Global preferences

Primary uplink

WAN 1

Load balancing

☐ Enabled

☒ Disabled

Flow preferences

Internet traffic

There are no uplink preferences for Internet traffic configured on this network.

[Add a preference](#)



Refer to the exhibit. Which two actions are required to optimize load balancing asymmetrically with a 4:1 ratio between links? (Choose two.)

- A. Change the primary uplink to "none".
- B. Add an internet traffic preference that defines the load-balancing ratio as 4:1.
- C. Enable load balancing.
- D. Set the speed of the cellular uplink to zero.
- E. Change the assigned speeds of WAN 1 and WAN 2 so that the ratio is 4:1.

Correct Answer: BC

Section: (none)

Explanation

Explanation/Reference:

QUESTION 6 Which Cisco Meraki best practice method preserves complete historical network event logs?

- A. Configuring the preserved event number to maximize logging.
- B. Configuring the preserved event period to unlimited.
- C. Configuring a syslog server for the network.
- D. Configuring Dashboard logging to preserve only certain event types.

Correct Answer: A

Section: (none)

Explanation

Explanation/Reference:

QUESTION 7 Which design requirement is met by implementing syslog versus SNMP?

- A. when automation capabilities are needed
- B. when proactive alerts for critical events must be generated
- C. when organization-wide information must be collected
- D. when information such as flows and client connectivity must be gathered

Correct Answer: D

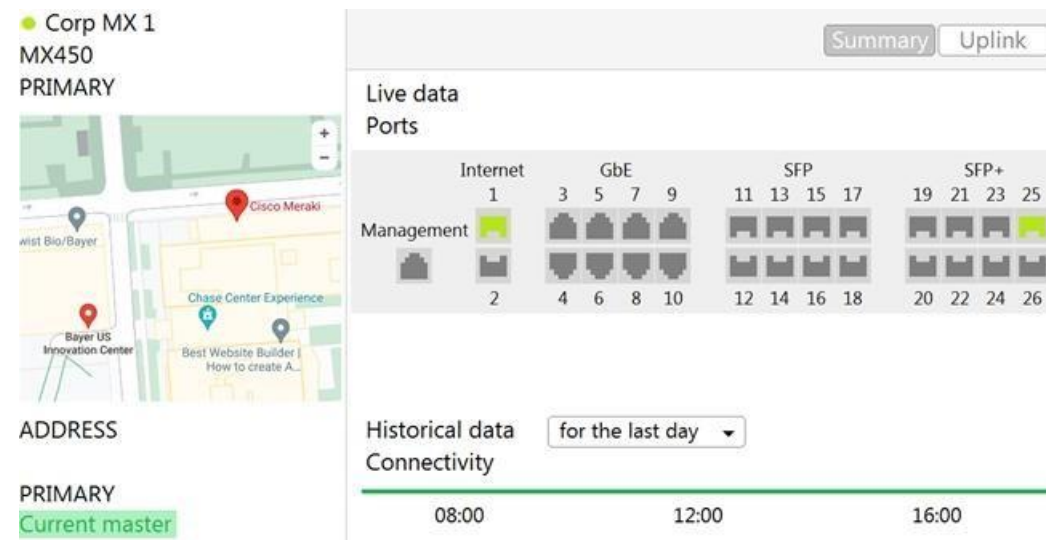
Section: (none)

Explanation

Explanation/Reference:

Reference: https://documentation.meraki.com/General_Administration/Monitoring_and_Reporting/Meraki_Device_Reporting_-_Syslog%2C_SNMP%2C_and_API **QUESTION**

8



Refer to the exhibit. The VPN concentrator is experiencing issues.

Which action should be taken to ensure a stable environment?

- A. Add a deny any/any firewall rule to the end of the firewall rules.
- B. Remove the connection from Internet 1.
- C. Physically disconnect all LAN ports.
- D. Configure the MX appliance to Routed mode on the Addressing & VLANs page.

Correct Answer: C

Section: (none)

Explanation

Explanation/Reference:

QUESTION 9

Route table

SUBNET	NAME	TYPE	SORT BY
<input type="text" value="Search by subnet"/>	<input type="text" value="Search by name"/>	<input type="text" value="All"/>	<input type="text" value="Priority"/>

Subnet	Name	Type	Next hop
10.115.32.0/28	Store 1532 – appliance: MGMT	Meraki VPN: VLAN	Peer: Store 1532 – appliance
10.116.32.0/28	Store 1532 – appliance: DATA	Meraki VPN: VLAN	Peer: Store 1532 – appliance
192.39.2.28/32	External	BGP	10.128.124.62
192.168.70.8/29	MSP NOC	IPSec Peer	4.99.111.99
192.168.70.0/29	MSP NOC	IPSec Peer	4.100.99.100
192.39.228.0/24	External	BGP	10.128.124.62
192.168.0.0/16	External	BGP	10.128.124.62

Refer to the exhibit. A packet arrives on the VPN concentrator with source IP 10.168.70.3 and destined for IP 10.116.32.4.

What is the next hop for the packet, based on this concentrator routing table?

- A. The concentrator gateway (10.128.124.62) is the next hop.
- B. Not enough detail is available to determine the next hop.
- C. The packet is stopped.
- D. The Auto VPN peer “Store 1532 – appliance” is the next hop.

Correct Answer: B

Section: (none)

Explanation

Explanation/Reference:

QUESTION 10 Company iPads are enrolled in Systems Manager without supervision, and profiles are pushed through Systems Manager.

Which outcome occurs when a user attempts to remove the “Meraki Management” profile on an iPad?

- A. The “Meraki Management” profile cannot be removed.
- B. The “Meraki Management” profile is removed and then pushed automatically by Systems Manager.
- C. The “Meraki Management” profile is removed. All the profiles that Systems Manager pushed are also removed.
- D. The “Meraki Management” profile is removed. All the profiles Systems Manager pushed remain.

Correct Answer: C

Section: (none)

Explanation

Explanation/Reference:

QUESTION 11 Which two features and functions are supported when using an MX appliance in Passthrough mode? (Choose two.)

- A. intrusion prevention
- B. site-to-site VPN
- C. secondary uplinks
- D. DHCP
- E. high availability

Correct Answer: AB

Section: (none)

Explanation

Explanation/Reference:

Reference: https://documentation.meraki.com/MX/Networks_and_Routing/Passthrough_Mode_on_the_MX_Security_Appliance_and_Z-series_Teleworker_Gateway

QUESTION 12

WAN Health For the last 2 hours

Uplink Status	Network Name ▲	Uplink Type	ISP	Availability	Total Usage	Average Throughput	Loss	Average Latency	Jitter
Ready	Meraki Sydney – appliance	WAN 1	unknown	<div></div>	↓ 4.03 GB, ↑ 1.39 GB	↓ 4.44 Mb/s, ↑ 1.55 Mb/s	0.00%	4.33 ms	0.05 ms
Active	Meraki Sydney – appliance	WAN 2	anticklockwise.net.au	<div></div>	↓ 23.18 GB, ↑ 14.85 GB	↓ 25.00 Mb/s, ↑ 15.39 Mb/s	0.00%	0.79 ms	0.06 ms

Refer to the exhibit. What are the Loss and Average Latency statistics based on?

- A. responses that the MX appliance receives on the connectivity-testing hostnames on the Insight > Web App Health page
- B. responses that the MX appliance receives on the connectivity-testing IP addresses on the Security & SD-WAN > Firewall page
- C. responses that the MX appliance receives on the connectivity-testing IP address that is configured on the Security & SD-WAN > SD-WAN & Traffic Shaping page
- D. responses that the MX appliance receives on the connectivity-testing IP addresses on the Help > Firewall info page

Correct Answer: B

Section: (none)

Explanation

Explanation/Reference:



QUESTION 13 In an organization that uses the Co-Termination licensing model, which two operations enable licenses to be applied? (Choose two.)

- A. Renew the Dashboard license.
- B. License a network.
- C. License more devices.
- D. Call Meraki support.
- E. Wait for the devices to auto-renew.

Correct Answer: AC

Section: (none)

Explanation

Explanation/Reference:

Reference: https://documentation.meraki.com/General_Administration/Licensing/Meraki_Co-Termination_Licensing_Overview

QUESTION 14

Which two Systems Manager Live tools are available only for Apple Macs and Windows PCs and cannot be used on iOS or Android mobile devices? (Choose two.)

- A. OS updates
- B. Send notification
- C. Selective wipe
- D. Screenshot
- E. Remote Desktop

Correct Answer: CE

Section: (none)

Explanation**Explanation/Reference:**

Reference: https://documentation.meraki.com/SM/Other_Topics/Systems_Manager_FAQ

QUESTION 15 What are two ways peers interact with ports that Auto VPN uses? (Choose two.)

- A. For IPsec tunneling, peers use high UDP ports within the 32768 to 61000 range.
- B. Peers contact the VPN registry at UDP port 9350.
- C. For IPsec tunneling, peers use high TCP ports within the 32768 to 61000 range.
- D. Peers contact the VPN registry at TCP port 9350.
- E. For IPsec tunneling, peers use UDP ports 500 and 4500.

Correct Answer: BC

Section: (none)

Explanation**Explanation/Reference:**

Reference: https://documentation.meraki.com/MX/Site-to-site_VPN/Meraki_Auto_VPN_-_Configuration_and_Troubleshooting

QUESTION 16 What occurs when a configuration change is made to an MX network that is bound to a configuration template?

- A. The configuration change in the bound network is combined with the template configuration inside the template.
- B. The more restrictive configuration is preferred.
- C. The configuration change in the bound network overrides the template configuration.
- D. The template configuration overrides the configuration change in the bound network.

Correct Answer: A

Section: (none)

Explanation**Explanation/Reference:**

Reference: https://documentation.meraki.com/General_Administration/Templates_and_Config_Sync/Managing_Multiple_Networks_with_Configuration_Templates

QUESTION 17 One thousand concurrent users stream video to their laptops. A 30/70 split between 2.4 GHz and 5 GHz is used.

Based on client count, how many APs (rounded to the nearest whole number) are needed?

- A. 26
- B. 28
- C. 30
- D. 32

Correct Answer: C

Section: (none)

Explanation**Explanation/Reference:****QUESTION 18**

Recent 802.1X failure



Refer to the exhibit. For an AP that displays this alert, which network access control method must be in use?

- A. preshared key
- B. WPA2-enterprise with my RADIUS server
- C. splash page with my RADIUS server
- D. MAC-based access control with RADIUS server

Correct Answer: A

Section: (none)

Explanation

Explanation/Reference:

QUESTION 19 Which Meraki Dashboard menu section is accessed to enable Sentry enrollment on an SSID?

- A. Wireless > Configure > Access Control
- B. Wireless > Configure > Splash page
- C. Wireless > Configure > Firewall & Traffic Shaping
- D. Wireless > Configure > SSIDs

Correct Answer: A

Section: (none)

Explanation

Explanation/Reference:

Reference: https://documentation.meraki.com/MR/MR_Splash_Page/Systems_Manager/Sentry_Enrollment

QUESTION 20

DRAG DROP



Drag and drop the settings from the left into the boxes on the right to indicate if the setting will be cloned or not cloned using the Cisco Meraki MS switch cloning feature.

Select and Place:

Correct Answer:

Section: (none)

Explanation

Explanation/Reference:

QUESTION 21

License information for Home

License status	OK	
License expiration ⓘ	May 20, 2029 (3593 days from now)	
MX advanced Security	Enabled	
System Manager	Enabled (paid)	
	License limit	Current device count
MS220-8P	1	1
MV	2	0
MX64	1	1
Systems Manager Agent	100	0
Wireless AP	7	1
MV-SEN	10 free	0

[Add another license](#)

Refer to the exhibit. This Dashboard organization uses Co-Termination licensing model.

What happens when an additional seven APs are claimed on this network without adding licenses?

- A. All APs immediately stop functioning.
- B. All network devices stop functioning in 30 days.
- C. One AP Immediately stops functioning.
- D. All APs stop functioning in 30 days.

Correct Answer: B

Section: (none)

Explanation

Explanation/Reference:



QUESTION 22

Uplink selection

Global preferences

Primary uplink

WAN 1

Load balancing

☐ Enabled

Traffic will be spread across both uplinks in the proportions specified above.
Management traffic to the Meraki cloud will use the primary uplink.

☒ Disabled

All Internet traffic will use the primary uplink unless overridden by an uplink preference or if the primary uplink fails.

Active-Active AutoVPN

☒ Enabled

Create VPN tunnels over all of the available uplinks (primary and secondary).

☐ Disabled

Do not create VPN tunnels over the secondary uplink unless the primary uplink fails.

Flow preferences

Internet traffic

There are no uplink preferences for Internet traffic configured on this network.

[Add a preference](#)

SD-WAN policies

VPN traffic

There are no uplink preferences for VPN traffic configured on this network.

[Add a preference](#)

Custom performance
classes

Name	Maximum latency (ms)	Maximum jitter (ms)	Maximum loss (%)	Actions
VoIP	150	(none)	(none)	✕

[Create a new custom performance class](#)



Refer to the exhibit. What does the MX Security Appliance send to determine whether VPN traffic exceeds the configured latency threshold in the VoIP custom performance class?

- A. 1000-byte TCP probes every second, through VPN tunnels that are established over the primary WAN link.
- B. 100-byte UDP probes every second, through VPN tunnels that are established over every WAN link.
- C. 100-byte UDP probes every second, through VPN tunnels that are established over the primary WAN link.
- D. 1000-byte TCP probes every second, through VPN tunnels that are established over every WAN link.

Correct Answer: D

Section: (none)

Explanation

Explanation/Reference:

QUESTION 23 What is the role of the Meraki Dashboard as the service provider when using SAML for single sign-on to the Dashboard?

- A. The Dashboard generates the SAML request.
- B. The Dashboard provides user access credentials.
- C. The Dashboard parses the SAML request and authenticates users.
- D. The Dashboard generates the SAML response.

Correct Answer: A

Section: (none)

Explanation

Explanation/Reference:

QUESTION 24

Security Center the last 2 weeks ▾

Search events Filter ▾ 158 matching events

Summary **Events**

Time	Type	Source	Destination	Disposition	Action	Details
May 30 21:22:50	IDS Alert	Desktop [REDACTED]:10	a104-96-113-137 deploy.static.akamaitech nologies.com	Blocked	MALWARE-CNC	Win.Trojan.Cridex variant outbound connection
May 30 21:22:46	IDS Alert	Desktop [REDACTED]:10	a104-96-113-137 deploy.static.akamaitech nologies.com	Blocked	MALWARE-CNC	Win.Trojan.Cridex variant outbound connection
May 30 21:22:46	IDS Alert	Desktop [REDACTED]:10	a104-96-113-137 deploy.static.akamaitech nologies.com	Blocked	MALWARE-CNC	Win.Trojan.Cridex variant outbound connection
May 30 21:22:46	IDS Alert	Desktop [REDACTED]:10	a104-96-113-137 deploy.static.akamaitech nologies.com	Blocked	MALWARE-CNC	Win.Trojan.Cridex variant outbound connection

MALWARE-CNC Win.Trojan.Cridex variant outbound connection	
Rule ID	1-31772
Whitelist	<input checked="" type="checkbox"/> On <input type="checkbox"/> Off
Links	www.virustotal.com
Actions	Rule details Inspect picklist Show this signature only

Refer to the exhibit. Which IDS/IPS mode is the MX Security Appliance configured for?

- A. quarantine
- B. prevention
- C. detection
- D. blocking

Correct Answer: B

Section: (none)

Explanation

Explanation/Reference:



QUESTION 25 Which two primary metrics does Meraki Insight use to calculate the Application Performance Score?
(Choose two.)

- A. Maximum Jitter
- B. Total Bandwidth Usage
- C. Maximum Latency
- D. Per-flow Goodput
- E. Application Response Time

Correct Answer: DE

Section: (none)

Explanation

Explanation/Reference:

Reference: <https://cloudcontrolled.uk/wp-content/uploads/2018/08/MerakiInsight.pdf> (04)

QUESTION 26

DRAG DROP

Drag and drop the steps from the left into the sequence on the right to manage device control, according to Cisco Meraki best practice.

Select and Place:

enroll	1
create profile	2
add settings profile	3
define tags	4
apply profile	5

Correct Answer:

enroll	create profile
create profile	add settings profile
add settings profile	enroll
define tags	define tags
apply profile	apply profile

Section: (none)

Explanation

Explanation/Reference:



QUESTION 27 What is a feature of distributed Layer 3 roaming?

- A. An MX Security Appliance is not required as a concentrator.
- B. An MX Security Appliance is required as a concentrator.
- C. All wireless client traffic can be split-tunneled.
- D. All wireless client traffic is tunneled.

Correct Answer: A

Section: (none)

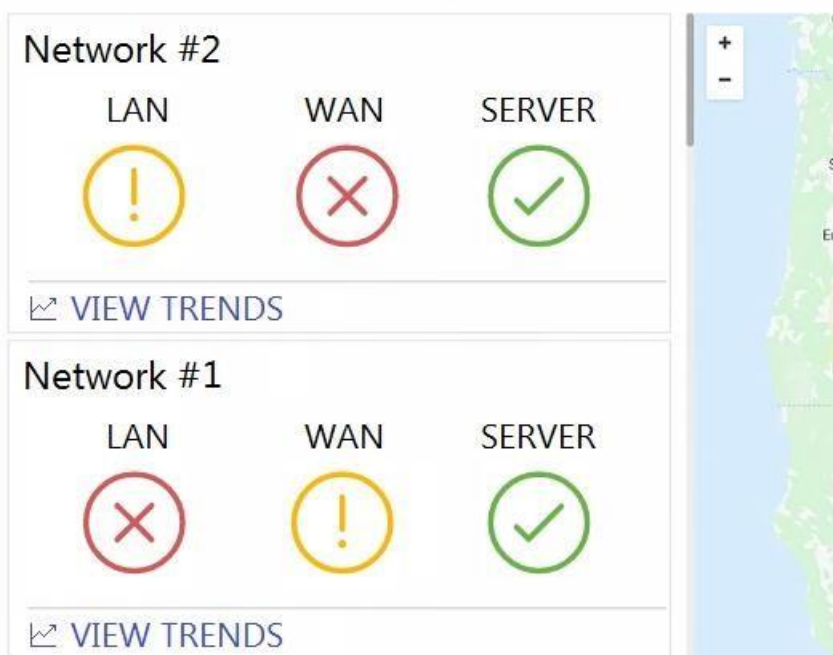
Explanation

Explanation/Reference:

Reference: https://documentation.meraki.com/Architectures_and_Best_Practices/Cisco_Meraki_Best_Practice_Design/Best_Practice_Design_-_MR_Wireless/Wireless_Layer_3_Roaming_Best_Practices

QUESTION 28

Web App Health for Google - for the last week -



Refer to the exhibit. What are two outcomes reflected in the Web App Health application? (Choose two.)

- A. Users on both networks may be experiencing issues when attempting to reach Google.
- B. Network #1 could not load Google because of a remote server issue.
- C. Network #2 had better application performance than Network #1.
- D. Network #2 could not load Google because of a local client misconfiguration.
- E. Neither network recorded any server-side performance issues.



Correct Answer: BE

Section: (none)

Explanation

Explanation/Reference:

QUESTION 29 What are two organization permission types? (Choose two.)

- A. Full
- B. Read-only
- C. Monitor-only
- D. Write
- E. Write-only

Correct Answer: AB

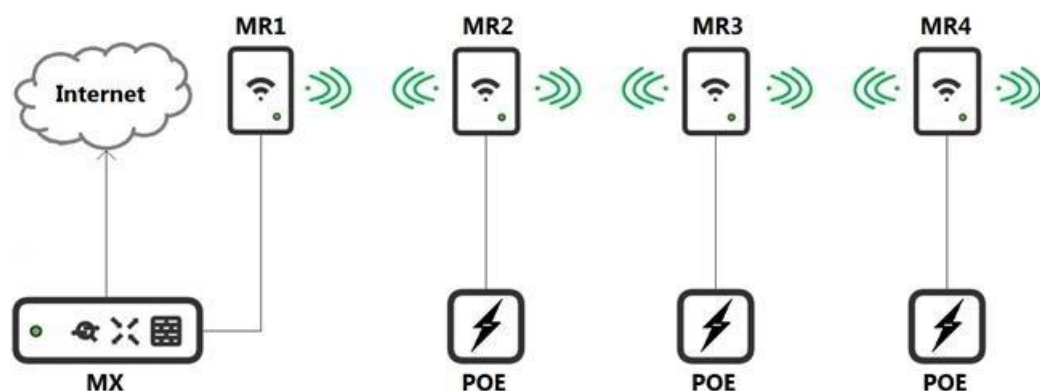
Section: (none)

Explanation

Explanation/Reference:

Reference: https://documentation.meraki.com/General_Administration/Managing_Dashboard_Access/Managing_Dashboard_Administrators_and_Permissions

QUESTION 30



Refer to the exhibit. Which design recommendation should be considered?

- A. A 25-percent throughput loss occurs for every hop. Cisco Meraki best practice recommends a 1-hop maximum.
- B. A 25-percent throughput loss occurs for every hop. Cisco Meraki best practice recommends a 2-hop maximum.
- C. A 50-percent throughput loss occurs for every hop. Cisco Meraki best practice recommends a 1-hop maximum.
- D. A 50-percent throughput loss occurs for every hop. Cisco Meraki best practice recommends a 2-hop maximum.

Correct Answer: A

Section: (none)

Explanation

Explanation/Reference:

QUESTION 31 What are two roles of the network and device tags in a Dashboard? (Choose two.)

- A. Tags enable administrators to configure a combination of network and device specific tags to create summary reports filtered for specific devices across multiple networks.
- B. Network tags can be used to assign networks to separate Auto VPN domains in an Organization with many networks.
- C. Network tags can be used to simplify the assignment of network-level permissions in an Organization with many networks.
- D. Device tags can be used to simplify the assignment of device-level permissions in an Organization with many administrators.
- E. Device tags can be assigned to MR APs to influence the gateway selection for repeaters in a mesh wireless network.

Correct Answer: AE

Section: (none)

Explanation

Explanation/Reference:

Reference: https://documentation.meraki.com/General_Administration/Organizations_and_Networks/Organization_Menu/Manage_Tags

32

Outbound rules	#	Policy	Protocol	Source	Src port	Destination	Dst port	Comment	Logging	Hits	Actions
		Allow	Any	Any	Any	Any	Any	Default rule	Enabled	2	
Add a rule											

Refer to the exhibit. Which outcome occurs when logging is set to Enabled?

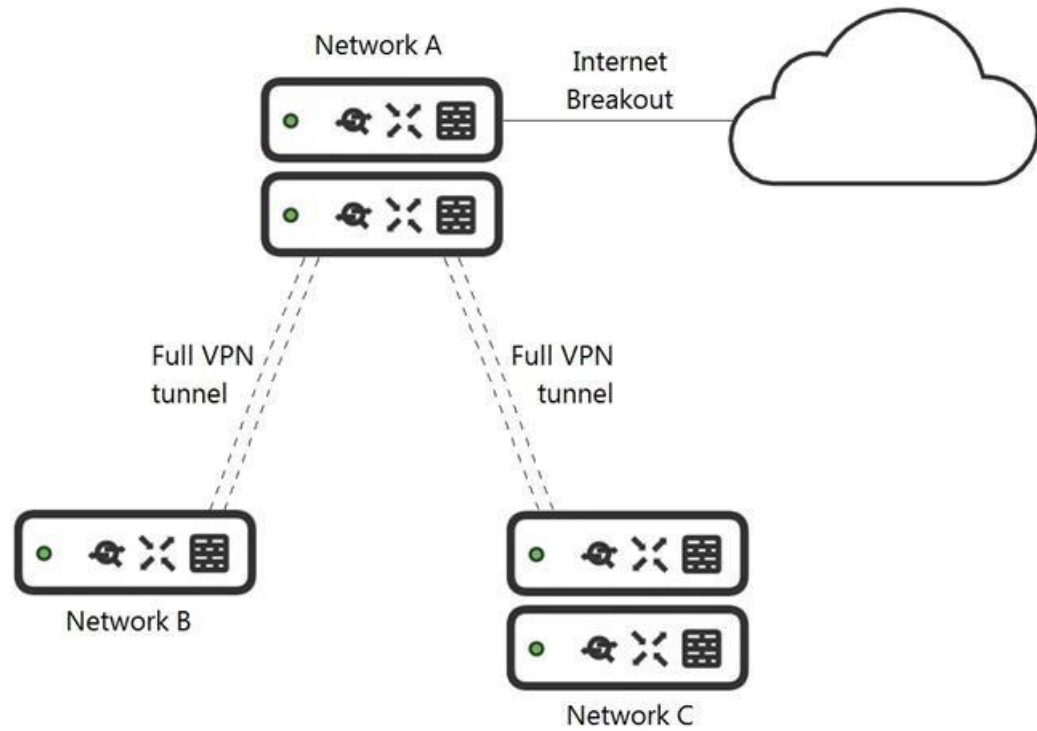
- A. Outbound flows are sent to a configured syslog server if a syslog sender is configured for flows.
- B. The hits counter within this section is now enabled.
- C. This firewall rule is now enabled.
- D. Inbound flows are sent to a configured syslog server if a syslog server configured for flows.

Correct Answer: D

Section: (none)

Explanation
Explanation/Reference:

QUESTION 33



Refer to the exhibit. What is the minimal Cisco Meraki Insight licensing requirement?

- A. A single Meraki Insight license must be configured on network A to gain Web App Health visibility on network B.
- B. A single Meraki Insight license must be configured on network B to gain Web App Health visibility on network B.
- C. A single Meraki Insight license must be configured on network A, and a single license must be configured on network B, to gain Web App Health visibility on network B.
- D. Two Meraki Insight licenses must be configured on network A to gain Web App Health visibility on network B.
- E. Two Meraki Insight licenses must be configured on network A and a single license must be configured on network B, to gain Web App Health visibility on network B.

Correct Answer: E
Section: (none)
Explanation

Explanation/Reference:

QUESTION 34 Air Marshal has contained a malicious SSID. What are two effects on connectivity? (Choose two.)

- A. Currently associated clients stay connected.
- B. New clients can connect.
- C. Currently associated clients are affected by restrictive traffic shaping rules.
- D. New clients cannot connect.
- E. Currently associated clients are disconnected.

Correct Answer: DE
Section: (none)
Explanation
Explanation/Reference:

QUESTION 35 What is the best practice Systems Manager enrollment method when deploying corporate-owned iOS devices?

- A. manual
- B. Apple Configurator
- C. Sentry enrollment
- D. DEP

Correct Answer: B

Section: (none)

Explanation

Explanation/Reference:

Reference: https://meraki.cisco.com/lib/pdf/meraki_whitepaper_ios.pdf

QUESTION 36

A customer requires a hub-and-spoke Auto VPN deployment with two NAT-mode hubs with dual uplink connections and 50 remote sites with a single uplink connection.

How many tunnels does each hub need to support?

- A. 52
- B. 54
- C. 100
- D. 104

Correct Answer: C

Section: (none)

Explanation

Explanation/Reference:



QUESTION 37 Which order is accurate for a firmware upgrade on MX appliances in a high-availability configuration?

- A. starts on the secondary MX appliance and then occurs on the primary MX appliance
- B. starts on both MX appliances at the same time and then reboots both appliances after traffic on the primary MX appliance ceases
- C. starts on both MX appliances at the same time and then immediately reboots both appliances
- D. starts on the primary MX appliance and then occurs on the secondary MX appliance

Correct Answer: D

Section: (none)

Explanation

Explanation/Reference:

Reference: <https://community.meraki.com/t5/Security-SD-WAN/Firmware-Update-to-HA-unit/td-p/47865>

QUESTION 38 How is high-availability supported for Cisco Meraki devices?

- A. Only the MX Security Appliances that use VRRP support high availability.
- B. An active/active high-availability pair is recommended for MX Security Appliances.
- C. The MX Security Appliances and MS Series Switches that use VRRP support an active/passive high-availability pair.
- D. The MX Security Appliances and MS Series Switches that use HSRP support an active/passive high-availability pair.

Correct Answer: A

Section: (none)

Explanation

Explanation/Reference:

Reference: https://documentation.meraki.com/MX/Deployment_Guides/MX_Warm_Spare_-_High_Availability_Pair

QUESTION 39 Which three verbs of request are available in the Cisco Meraki API?
(Choose three.)

- A. SET
- B. PUT
- C. PATCH
- D. ADD
- E. POST
- F. GET

Correct Answer: BEF

Section: (none)

Explanation

Explanation/Reference:

Reference: https://documentation.meraki.com/General_Administration/Other_Topics/Cisco_Meraki_Dashboard_API

QUESTION 40 A customer wants to use Microsoft Azure to host corporate application servers.

Which feature does the customer get by using a vMX appliance rather than connecting directly to Azure by VPN?

- A. malware protection
- B. SD-WAN
- C. next-generation firewall
- D. intrusion prevention

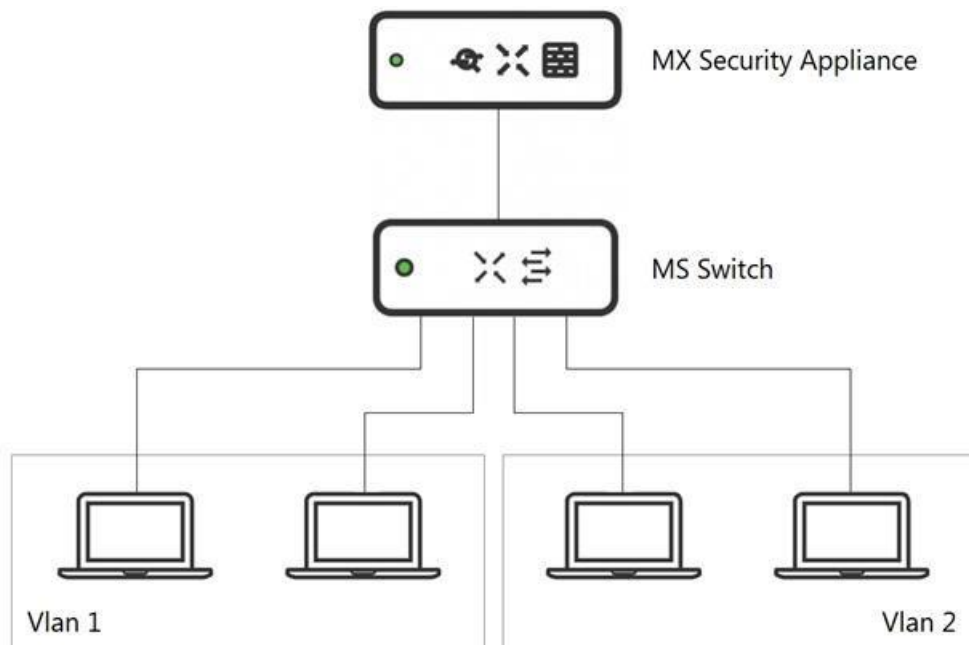
Correct Answer: C

Section: (none)

Explanation

Explanation/Reference:

QUESTION 41



Refer to the exhibit. What is an advantage of implementing inter-VLAN routing on an MX Security Appliance rather than performing inter-VLAN routing on an MS Series Switch?

- A. The MX appliance performs IDS/IPS for inter-VLAN traffic.
- B. The MX appliance performs AMP for inter-VLAN traffic.
- C. The MX appliance performs data encryption for inter-VLAN traffic.
- D. The MX appliance performs content filtering for inter-VLAN traffic.

Correct Answer: C

Section: (none)

Explanation

Explanation/Reference:

QUESTION 42 Which API endpoint clones a new Organization?

- A. POST /organizations/clone/{organizationId}
- B. PUT /organizations/{organizationId}/clone
- C. POST /organizations/{organizationId}/new
- D. POST /organizations/{organizationId}/clone

Correct Answer: C

Section: (none)

Explanation

Explanation/Reference:

QUESTION 43 What happens to an unsupervised iOS device when the “Meraki management” profile is removed?



- A. The “Meraki management” profile is removed. All configuration profiles that Systems Manager pushed remain.
- B. The “Meraki management” profile is removed. All configuration profiles that Systems Manager pushed are also removed.
- C. The “Meraki management” profile is removed and then pushed automatically by Systems Manager.
- D. The “Meraki management” profile cannot be removed.

Correct Answer: B

Section: (none)

Explanation

Explanation/Reference:

QUESTION 44 Which requirement is needed to implement Fast Lane on Cisco Meraki APs?

- A. wireless profile installed on an Apple iOS device
- B. wireless profile installed on a Cisco iOS access point
- C. adaptive 802.11r disabled
- D. traffic shaping rule tagging traffic with a DSCP value of 46 to Apple.com

Correct Answer: A

Section: (none)

Explanation

Explanation/Reference:

Reference: https://documentation.meraki.com/MR/WiFi_Basics_and_Best_Practices/Wireless_QoS_and_Fast_Lane

QUESTION 45 Which type of authentication protocol is used when using OSPF on an MX appliance?

- A. MD5
- B. certificate
- C. plaintext
- D. SHA-1

Correct Answer: A

Section: (none)

Explanation

Explanation/Reference:

Reference: https://documentation.meraki.com/MX/Site-to-site_VPN/Using_OSPF_to_Advertise_Remote_VPN_Subnets

QUESTION 46

When wireless SSIDs are configured in Dashboard, which setting on the Access Control page affects the ability of a 2.4 GHz only client device from associating to the WLAN for the first time?

- A. Content filtering
- B. Bridge mode
- C. 802.11r
- D. Dual band operating with Band Steering

Correct Answer: D

Section: (none)

Explanation

Explanation/Reference:

QUESTION 47 Which two actions can extend the video retention of a Cisco Meraki MV Smart Camera? (Choose two.)

- A. enabling audio compression
- B. installing an SSD memory extension
- C. enabling motion-based retention
- D. enabling maximum retention limit
- E. configuring a recording schedule

Correct Answer: CE

Section: (none)

Explanation

Explanation/Reference:

Reference: https://documentation.meraki.com/MV/Initial_Configuration/Video_Retention

QUESTION 48 How does a Meraki device behave if cloud connectivity is temporarily lost?

- A. The offline device continues to run with its last known configuration until cloud connectivity is restored.
- B. The offline device reboots every 5 minutes until connection is restored.
- C. The offline device stops passing traffic.
- D. The offline device tries to form a connection with a local backup sever.

Correct Answer: D

Section: (none)

Explanation

Explanation/Reference:



Reference: <https://community.meraki.com/t5/Security-SD-WAN/Cloud-Services/td-p/43141>

QUESTION 49 Where should a network admin navigate to investigate wireless mesh information between Meraki APs?

- A. Wireless > Monitor > Access Points > AP > RF
- B. Wireless > Configure > Radio Settings
- C. Wireless > Monitor > Wireless Health
- D. Wireless > Monitor > RF Spectrum

Correct Answer: A

Section: (none)

Explanation

Explanation/Reference:

QUESTION 50



Refer to the exhibit. During a Meraki AP deployment, the default SSID that the exhibit shows is broadcast.

What causes this behavior?

- A. An AP does not have a wired connection to the network.
- B. An AP cannot connect to the default gateway.
- C. An AP has never connected to the Meraki Cloud Controller.
- D. An AP has Site Survey mode enabled.

Correct Answer: C

Section: (none)

Explanation

Explanation/Reference:

Reference: https://documentation.meraki.com/MR/Other_Topics/Troubleshooting_local_connection_issues_using_default_SSID_on_MR_Access_Points

QUESTION 51

A Cisco Meraki MV camera is monitoring an office and its field of vision currently captures work desks and employee computer screens. However, recording employee computer screens is prohibited by local regulation.

Which feature in Dashboard can be used to preserve the current position of the camera while also meeting regulation requirements?

- A. zone exclusion
- B. privacy window
- C. area of interest
- D. sensor crop
- E. restricted mode

Correct Answer: E

Section: (none)

Explanation

Explanation/Reference:

QUESTION 52

Which Cisco Meraki product must be deployed in addition to Systems Manager so that Systems Manager Sentry enrollment can be used?

- A. MS Switch
- B. Meraki Insight
- C. MR Access Point
- D. MV Smart Camera

Correct Answer: C

Section: (none)

Explanation

Explanation/Reference:

Reference: <https://meraki.cisco.com/blog/tag/systems-manager/page/4/>

QUESTION 53 Which information do the MXs in a High Availability pair share?

- A. spanning-tree state
- B. time synchronization state
- C. DHCP association database
- D. stateful firewall database

Correct Answer: A

Section: (none)

Explanation

Explanation/Reference:

QUESTION 54 Which VLAN is used to source pings across the site-to-site VPN when using the MX Live tools?

- A. highest VLAN ID that is configured and set to NO to use VPN
- B. lowest VLAN ID that is configured and set to YES to use VPN
- C. highest VLAN ID that is configured and set to YES to use VPN
- D. lowest VLAN ID configured and set to NO to use VPN

Correct Answer: C

Section: (none)

Explanation

Explanation/Reference:

Reference: https://documentation.meraki.com/General_Administration/Tools_and_Troubleshooting/Using_the_Ping_Live_Tool

QUESTION 55 A new application needs to be pushed to all iOS devices. Some devices report “NotNow” in the event log and do not install the application.

What does the “NotNow” event indicate?

- A. The application requires the most recent iOS version.
- B. The device is locked with a passcode.
- C. The device cannot connect to Apple servers.



D. The device cannot connect to Cisco Meraki servers.

Correct Answer: B

Section: (none)

Explanation

Explanation/Reference:

Reference: <https://community.meraki.com/t5/Mobile-Device-Management/Check-NotNow-Status/td-p/3887>

QUESTION 56 Which information is used to calculate whether a WAN link has high usage?

- A. data under Security & SD WAN > Appliance Status > Uplink > Live Data
- B. total historical throughput of an uplink
- C. total number of devices that are actively passing traffic
- D. value under Security & SD WAN > SD WAN & Traffic Shaping > Uplink Configuration

Correct Answer: D

Section: (none)

Explanation

Explanation/Reference:

QUESTION 57

Which configuration step is necessary when automatic updating is required of iOS apps provisioned through Systems Manager that are found in the App Store?

- A. No configuration step is necessary; automatic updating is the default behavior.
- B. Configure automatic updating of iOS devices in the Meraki installed profile.
- C. Create a security policy that enables automatic updates.
- D. Create a profile with automatic update enabled and apply it to iOS devices.



Correct Answer: C

Section: (none)

Explanation

Explanation/Reference:

Reference: https://documentation.meraki.com/SM/Apps_and_Software/Updating_Managed_iOS_Apps