

JN0-412.VCEplus.premium.exam.65q

Number: JN0-412
Passing Score: 800
Time Limit: 120 min
File Version: 1.0



Website: <https://vceplus.com>

VCE to PDF Converter: <https://vceplus.com/vce-to-pdf/>

Facebook: <https://www.facebook.com/VCE.For.All.VN/>

Twitter : https://twitter.com/VCE_Plus

JN0-412

Cloud, Specialist (JNCIS-Cloud)

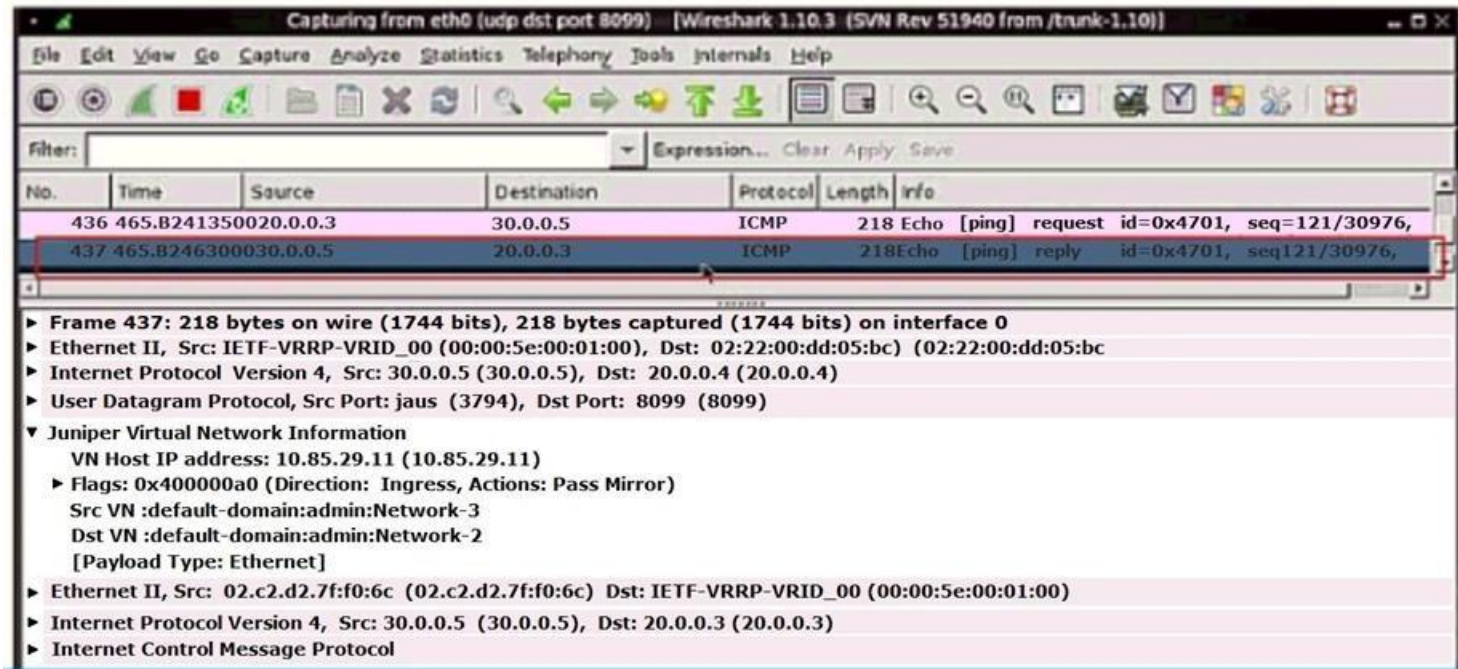


Version 1.0

Exam A

QUESTION 1

Click the Exhibit button.



The exhibit displays a Contrail analyzer virtual machine's console.

Which two statements are true in this scenario? (Choose two.)

- A. The ping traffic is initiated by a virtual machine with an IP address of 20.0.0.3.
- B. The ping traffic is initiated by a virtual machine with an IP address of 20.0.0.4.
- C. The Contrail analyzer virtual machine's IP address is 10.85.29.11.
- D. The Contrail analyzer virtual machine's IP address is 20.0.0.4.



Correct Answer: AC

Section: (none)

Explanation

Explanation/Reference:

QUESTION 2

You decide to create only host routes for each of your virtual networks in a project. Each virtual network is sent its correct host prefix. When troubleshooting inter-VN connectivity, using the ping command, the response times out between two virtual networks even though your policies allow for it.

What is the problem in this scenario?

- A. The VMs do not have interfaces.
- B. Using host routes prevents the default route from being sent.
- C. Your VMs have incorrect DNS settings.
- D. The IPAM settings are incorrect.

Correct Answer: C

Section: (none)

Explanation

Explanation/Reference:

QUESTION 3

Which command displays routes in vRouter VRF?

- A. rt
- B. show route
- C. show route table vrf-name
- D. route print

Correct Answer: A

Section: (none)

Explanation

Explanation/Reference:

Reference: https://www.juniper.net/documentation/en_US/contrail2.21/topics/task/configuration/vrouter-cli-utilities-vnc.html

QUESTION 4 What are two networking components of OpenStack?

(Choose two.)

- A. Neutron
- B. Nova
- C. Ironic
- D. Barbican

Correct Answer: AB

Section: (none)

Explanation

Explanation/Reference:

Reference: <https://docs.openstack.org/newton/networking-guide/intro.html>

QUESTION 5 What are two characteristics of containers used in Contrail?

(Choose two.)

- A. Each container has the configuration for all applications running in that container.
- B. Each pod can contain only one container.
- C. Each container has the configuration for all applications running in all containers.
- D. Each pod can contain several containers.

Correct Answer: AB

Section: (none)

Explanation

Explanation/Reference:

Reference: https://www.juniper.net/documentation/en_US/contrail19/topics/concept/summary-of-container-design.html

QUESTION 6 Which two deployment methods does AppFormix support?

(Choose two.)

- A. Hyper-V
- B. VMware
- C. OpenStack
- D. Xen

Correct Answer: BC

Section: (none)

Explanation

Explanation/Reference:

Reference: https://www.juniper.net/documentation/en_US/appformix/topics/concept/appformix-general-requirements.html



QUESTION 7 Which two statements about SDN and NFV are true?

(Choose two.)

- A. NFV separates network control and forwarding functions and provides a centralized view of the network.
- B. SDN decouples network services from hardware appliances so they can run in software.
- C. SDN separates network control and forwarding functions and provides a centralized view of the network.
- D. NFV decouples network services from hardware appliances so they can run in software.

Correct Answer: CD

Section: (none)

Explanation

Explanation/Reference:

Reference: <https://www.sdxcentral.com/networking/nfv/definitions/whats-network-functions-virtualization-nfv/>

QUESTION 8 What are three benefits of implementing an NFV solution?

(Choose three.)

- A. increased network speed using bandwidth management
- B. reduced hardware requirements
- C. automated services
- D. tenants charged only for what they use
- E. isolated switching functions

Correct Answer: ABC

Section: (none)

Explanation

Explanation/Reference:



QUESTION 9

To retrieve attributes of a new virtual machine, with which Contrail component does the OpenStack Nova agent communicate to create a virtual network?

- A. Neutron
- B. Glance
- C. Analytics
- D. Control

Correct Answer: A

Section: (none)

Explanation

Explanation/Reference:

QUESTION 10 Prior to installing Contrail, which list of settings must be verified on all participating servers?

- A. DHCP is enabled, hostname resolution, and that SSH is enabled
- B. time synchronization, hostname resolution, and that FTP is enabled
- C. time synchronization, hostname resolution, and that SSH is enabled
- D. DHCP is enabled, hostname resolution, and that FTP is enabled

Correct Answer: C

Section: (none)

Explanation

Explanation/Reference:

Reference: https://www.juniper.net/documentation/en_US/contrail2.0/information-products/pathway-pages/getting-started.pdf

QUESTION 11 Which two statements regarding tags, within the Contrail Security framework, are correct? (Choose two.)

- A. RBAC determines which user accounts can modify or remove attached tags.
- B. Tags are communicated from the control node to vRouters through route updates.
- C. Only the CSPadmin user account can modify or remove attached tags.
- D. Tags are communicated from the config node to vRouters through route updates.

Correct Answer: AB

Section: (none)

Explanation

Explanation/Reference:

QUESTION 12 Which two statements are true about AppFormix Heat maps? (Choose two.)

- A. AppFormix Heat maps show historical performance at a glance.
- B. AppFormix Heat maps show a visual chart of the relationship between hosts and VMs.
- C. AppFormix Heat maps show real-time performance at a glance.
- D. AppFormix Heat maps show a visual chart of the relationship between control and config nodes.

Correct Answer: BC

Section: (none)

Explanation

Explanation/Reference:

Reference: https://www.juniper.net/documentation/en_US/appformix/topics/concept/appformix-heat-map.html

QUESTION 13 You are asked to change the settings in the AppFormix UI so that compute1's status displays "Bad" only when CPU utilization is above 70%.

In which workspace of the AppFormix UI would you perform this task?

- A. SLA Settings
- B. Notification Settings
- C. Plugins
- D. Services Settings

Correct Answer: A

Section: (none)

Explanation

Explanation/Reference:

QUESTION 14 Which BMS feature ensures that IP address management is consistent between the virtual and physical instances?

- A. inventory management
- B. image management
- C. IPAM management
- D. network security management

Correct Answer: C

Section: (none)

Explanation

Explanation/Reference:

Reference: https://www.juniper.net/documentation/en_US/contrail19/topics/topic-map/bms-management.html

QUESTION 15

Which SDN solution allows the control plane to remain on legacy hardware as a stop-gap measure until you are ready to replace the current hardware?

- A. SDN using NVGRE
- B. SDN as an overlay
- C. SDN using an API
- D. open SDN

Correct Answer: B

Section: (none)

Explanation

Explanation/Reference:

QUESTION 16

Which type of query is generated by the `curl http://<ip address>:8081/analytics/uves/vrouters` command?

- A. SSL
- B. REST
- C. SQLD. XML

Correct Answer: B

Section: (none)

Explanation



Explanation/Reference:

QUESTION 17 What is AppFormix used for in Contrail?

- A. to deploy an underlay fabric
- B. to create VNFs
- C. to analyze network performance
- D. to secure application traffic

Correct Answer: B

Section: (none)

Explanation

Explanation/Reference:

QUESTION 18 Which two statements are true about Generic Device Operations? (Choose two.)

- A. Generic Device Operations execute multiple commands on multiple devices.
- B. Generic Device Operations are executed using the REST API.
- C. Generic Device Operations are executed using Ansible.
- D. Generic Device Operations execute a single command on multiple devices.

Correct Answer: CD

Section: (none)

Explanation

Explanation/Reference:

Reference: https://www.juniper.net/documentation/en_US/contrail19/topics/task/configuration/generic-device-operational-commands.html

QUESTION 19 What are three ways to deploy an MX Series device as an SDN gateway?
(Choose three.)

- A. Configure it as an L4 gateway.
- B. Configure it as an application gateway.
- C. Configure it as an SDN-to-SDN gateway.
- D. Configure it as an L3 gateway.
- E. Configure it as an L2 gateway.

Correct Answer: CDE

Section: (none)

Explanation

Explanation/Reference:

QUESTION 20 Which two statements about Kubernetes clusters are correct? (Choose two.)

- A. The master coordinates the cluster.
- B. The minions are responsible for running the applications.
- C. The nodes are responsible for running the applications.
- D. The pod controller coordinates the cluster.

Correct Answer: AB

Section: (none)

Explanation

Explanation/Reference:

Reference: https://www.juniper.net/documentation/en_US/contrail19/topics/task/installation/provisioning-k8s-cluster.html

QUESTION 21 You have deployed a Contrail cluster that must support bare-metal servers.

Which protocol is used to communicate between the bare-metal server's virtual tunnel endpoints and the Contrail cluster to establish sessions with the VM servers?

- A. SRTP
- B. EVPN/VXLAN
- C. BGP
- D. XMPP

Correct Answer: B

Section: (none)

Explanation

Explanation/Reference:

QUESTION 22

Which two statements describe the Kubernetes network policy? (Choose two.)

- A. If a policy is not applied to a pod, then the pod accepts traffic from all sources.
- B. A policy can define traffic in only one direction.

- C. A policy can define traffic in both directions.
- D. If a policy is not applied to a pod, then the pod blocks traffic from all sources.

Correct Answer: AC

Section: (none)

Explanation

Explanation/Reference:

Reference: https://www.juniper.net/documentation/en_US/day-one-books/topics/topic-map/kubernetes-in-practice.html#id-kubernetes-network-policy

QUESTION 23 Which network type is created in Neutron and mapped to physical networks?

- A. transient
- B. tenant
- C. provider
- D. management

Correct Answer: C

Section: (none)

Explanation

Explanation/Reference:

QUESTION 24 Which two fabric management tasks would be completed using Contrail Command? (Choose two.)

- A. Automatically deploy an P fabric underlay.
- B. Modify routing protocol preferences.
- C. Change user permissions on Junos devices.
- D. Discover devices in the network.



Correct Answer: AD

Section: (none)

Explanation

Explanation/Reference:

QUESTION 25 What is a TAP interface in Contrail?

- A. A software network interface that operates at OSI Layer 3.
- B. A hardware network interface that operates at OSI Layer 3.
- C. A software network interface that operates at OSI Layer 2.
- D. A hardware network interface that operates at OSI Layer 2.

Correct Answer: A

Section: (none)

Explanation

Explanation/Reference:

Reference: <https://sureshkv1.gitbooks.io/opencontrail-beginners-tutorial/content/introspect/contrail-vrouter-agent.html>

QUESTION 26

What are two predefined tags that are used in Contrail Security policies? (Choose two.)

- A. label

- B. group
- C. family
- D. site

Correct Answer: AD

Section: (none)

Explanation

Explanation/Reference:

Reference: https://www.juniper.net/documentation/en_US/contrail20/information-products/pathway-pages/contrail-networking-security-user-guide.pdf

QUESTION 27 When creating a firewall rule in Contrail Security, which two types of endpoints are available?

(Choose two.)

- A. virtual network
- B. tag
- C. domain
- D. service level

Correct Answer: AB

Section: (none)

Explanation

Explanation/Reference:

Reference: https://www.juniper.net/documentation/en_US/contrail20/information-products/pathway-pages/contrail-networking-security-user-guide.pdf

QUESTION 28

Which role does OpenStack serve in SDN?

- A. vRouter
- B. controller
- C. gateway
- D. orchestrator

Correct Answer: D

Section: (none)

Explanation

Explanation/Reference:

QUESTION 29

A snapshot of a VM1 instance was just taken. The snapshot is named VM2. You must launch a new VM instance called VM2 using the newly created snapshot.

Which step must be taken to launch the instance?

- A. Create and launch the VM2 instance using the snapshot found under Project > Compute > Images.
- B. Launch the VM2 instance found under Project > Compute > Instances.
- C. Create and launch the VM2 instance using the snapshot found under Other > Snapshots.
- D. Launch the VM2 instance found under the drop-down menu for the VM1 instance.

Correct Answer: C

Section: (none)

Explanation

Explanation/Reference:

QUESTION 30 Which two statements are true about User Visible Entities

(UVEs)? (Choose two.)

- A. UVES are limited to a single component.
- B. UVES can span multiple components.
- C. UVES may not require aggregation before being presented.
- D. UVES may require aggregation before being presented.

Correct Answer: BD

Section: (none)

Explanation

Explanation/Reference:

Reference: https://www.juniper.net/documentation/en_US/contrail19/topics/task/configuration/analytics-apis-vnc.html

QUESTION 31 Two virtual machines that belong to the same virtual network are not able to communicate with each other.

Which statement is true in this scenario?

- A. A floating IP address is assigned to the virtual machine.
- B. Images used to spawn the two virtual machines have different flavors.
- C. A security group is blocking the communication.
- D. The two virtual machines are in different availability zones.

Correct Answer: C

Section: (none)

Explanation

Explanation/Reference:

QUESTION 32 What are three functions of an SDN controller?

(Choose three.)

- A. An SDN controller uses federated routes between BGP autonomous systems.
- B. An SDN controller uses northbound APIs to manage applications and business logic.
- C. An SDN controller uses southbound APIs to manage flow control to the switches and routes in the network.
- D. An SDN controller uses federated data between SDN controller domains.
- E. An SDN controller functions as a gateway for the virtual machines in the SDN.

Correct Answer: ABC

Section: (none)

Explanation

Explanation/Reference:

QUESTION 33 You are configuring a Contrail Security firewall policy rule and need to specify an exact port.

Which two statements describe how to accomplish this task? (Choose two.)

- A. You should create a tag and specify it in the firewall policy rule.
- B. You should create an address group and specify it in the firewall policy rule.
- C. You should create a service group and specify it in the firewall policy rule.
- D. You should specify the service in the firewall policy rule.

Correct Answer: AB

Section: (none)

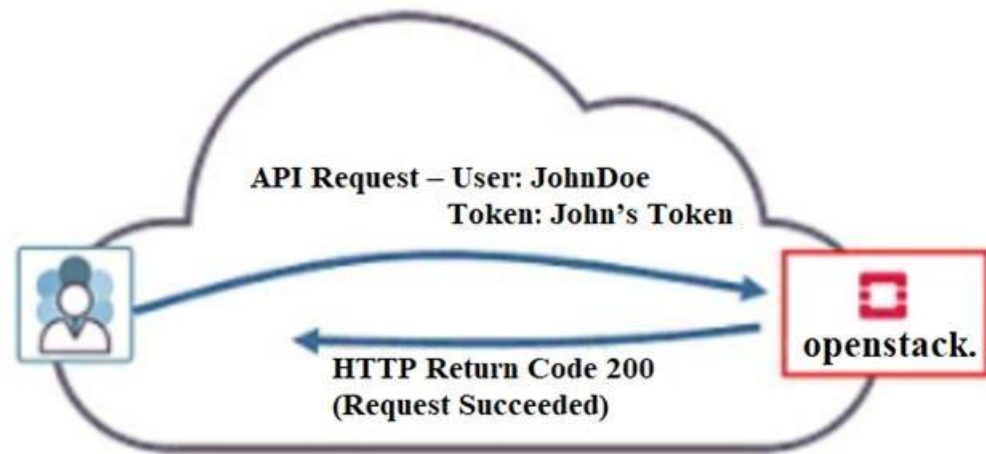
Explanation

Explanation/Reference:

Reference: https://www.juniper.net/documentation/en_US/contrail20/information-products/pathway-pages/contrail-networking-security-user-guide.pdf

QUESTION 34

Click the Exhibit button.



Referring to the exhibit, what must have occurred prior to JohnDoe sending the request?

- A. JohnDoe must have obtained a valid token from Horizon.
- B. JohnDoe must have successfully authenticated using OpenStack's Web user interface.
- C. JohnDoe must have obtained a valid token from Keystone.
- D. JohnDoe must have obtained a valid token from the Contrail control node.

Correct Answer: A

Section: (none)

Explanation

Explanation/Reference:

QUESTION 35 Which Kubernetes resource defines the traffic allowed to reach the pod?

- A. SecurityGroup
- B. NetworkPolicy
- C. Ingress
- D. IPAM

Correct Answer: B

Section: (none)

Explanation

Explanation/Reference:

Reference: https://www.juniper.net/documentation/en_US/contrail19/topics/concept/k8s-network-policy.html

QUESTION 36

Which ETSI NFV function is responsible for the management of virtual network functions (VNF) and element management systems (EMS)?

- A. Virtual Network Function Manager (VNFM)
- B. OpenStack
- C. Contrail Command
- D. Analytics Database

Correct Answer: A

Section: (none)

Explanation

Explanation/Reference:

QUESTION 37

Your development team asks you to provision twenty exact copies of a three-tier application containing three VMs. Each copy of the application must be on their own isolated network. The development team also wants to deploy more copies in the future from a self-service portal.

What will accomplish this task?

- A. Create a Heat orchestration template for the application and then launch twenty stacks using the Horizon dashboard or OpenStack CLI.
- B. Use the Contrail fabric manager to define and launch all twenty stacks using an intent-driven automation feature.
- C. Create all twenty networks and launch each instance using the Horizon instance creation wizard.
- D. Create a Heat orchestration template for the application and then launch twenty stacks using the AppFormix user interface.

Correct Answer: A

Section: (none)

Explanation

Explanation/Reference:

QUESTION 38

What are two supported methods to add a new Contrail compute node using Contrail Command? (Choose two.)

- A. From the Web UI, add a new server and assign it as a compute node to the existing cluster.
- B. From the CLI on the Contrail Command server, edit the `instances.yml` file and add the new node information.
- C. From the CLI on the Contrail Command server, edit the `command_servers.yml` file and add the new node information.
- D. From the CLI on the Contrail Command server, edit the `testbed.py` file and add the new node information.

Correct Answer: AB

Section: (none)

Explanation

Explanation/Reference:

Reference: https://www.juniper.net/documentation/en_US/contrail19/topics/task/configuration/adding-new-compute-node-cc.html

QUESTION 39

Which two interfaces are active in the Contrail `analyzer-vm-console-two-if.qcow2` traffic analyzer image? (Choose two.)

- A. left
- B. right
- C. monitor
- D. management

Correct Answer: AD

Section: (none)

Explanation

Explanation/Reference:

Reference: https://www.juniper.net/documentation/en_US/contrail19/topics/task/configuration/configure-traffic-analyzer-vnc.html

QUESTION 40 You are creating an AppFormix dynamic alarm definition with a dynamic threshold.

In this scenario, which three parameters are available? (Choose three.)

- A. baseline analysis algorithm
- B. state
- C. owner
- D. sensitivity
- E. learning period duration

Correct Answer: ADE

Section: (none)

Explanation

Explanation/Reference:

Reference: https://www.juniper.net/documentation/en_US/appformix/topics/concept/appformix-alarms.html

QUESTION 41 Which three encapsulations does Contrail support for overlay networking?
(Choose three.)

- A. MPLS over GRE
- B. EVPN
- C. VXLAN
- D. MPLS over UDP
- E. MPLS over IPsec

Correct Answer: ACD

Section: (none)

Explanation

Explanation/Reference:

Reference: <https://www.juniper.net/us/en/local/pdf/whitepapers/2000535-en.pdf>



QUESTION 42 A vRouter includes which two containers? (Choose two.)

- A. nodemgr
- B. dns
- C. api
- D. agent

Correct Answer: AD

Section: (none)

Explanation

Explanation/Reference:

Reference: <https://docs.mirantis.com/mcp/q4-18/mcp-ref-arch/opencontrail-plan/contrail-components/contrail-components-4.html>

QUESTION 43 You are asked to create a connection between a VM and two ports on a QFX leaf device in the fabric.

Which Contrail feature must you configure to accomplish this task?

- A. virtual network policy
- B. floating IP
- C. virtual port group
- D. virtual network with route leaking

Correct Answer: C

Section: (none)

Explanation

Explanation/Reference:

Reference: https://www.juniper.net/documentation/en_US/contrail19/information-products/pathway-pages/contrail-fabric-lifecycle-management-feature-guide.pdf#page=113&zoom=100,100,712

QUESTION 44 Which two nodes are part of the Contrail controller role? (Choose two.)

- A. config
- B. control
- C. analytics
- D. load balancer

Correct Answer: AB

Section: (none)

Explanation

Explanation/Reference:

Reference: [https://www.juniper.net/documentation/en_US/nfv2.1/topics/concept/ccpe-architecture.html#:~:text=Contrail%20controller%20node%2C%20which%20hosts,virtualized%20network%20functions%20\(VNFs\).http://juniper.github.io/contrail-vnc/architecture.html](https://www.juniper.net/documentation/en_US/nfv2.1/topics/concept/ccpe-architecture.html#:~:text=Contrail%20controller%20node%2C%20which%20hosts,virtualized%20network%20functions%20(VNFs).http://juniper.github.io/contrail-vnc/architecture.html)

QUESTION 45 Which statements correct about Contrail security?

- A. Contrail security is used to control access into Junos devices.
- B. Contrail security is used to apply security features and segment traffic flows.
- C. Contrail security is used to analyze network performance and learn traffic patterns.
- D. Contrail security is used to control management access to VNFs.

Correct Answer: B

Section: (none)

Explanation



Explanation/Reference:

QUESTION 46

Which protocol does Contrail use to exchange information between the Contrail Controller and the Contrail vRouter?

- A. NETCONF
- B. XMPP
- C. BGP
- D. SSH

Correct Answer: B

Section: (none)

Explanation

Explanation/Reference:

QUESTION 47 What are three examples of hypervisors? (Choose three.)

- A. VMware ESXi
- B. Juniper vSRX
- C. KVM
- D. OpenStack Nova
- E. Microsoft Hyper-V

Correct Answer: ACE

Section: (none)

Explanation

Explanation/Reference:

QUESTION 48 Which two statements are true about AppFormix? (Choose two.)

- A. The analytics component of AppFormix takes action on notifications and SLA violations.
- B. AppFormix tracks SLAs and generates alerts in the event of an SLA violation.
- C. AppFormix analyzes resource usage trends to predict capacity needs.
- D. AppFormix does not require an agent on compute nodes.

Correct Answer: CB

Section: (none)

Explanation

Explanation/Reference:

QUESTION 49 Which two OpenStack components are optional services? (Choose two.)

- A. Nova
- B. Heat
- C. Glance
- D. Magnum

Correct Answer: CD

Section: (none)

Explanation

Explanation/Reference:

QUESTION 50 You are deploying Contrail in your existing network and you must ensure that it manages your current IP fabric underlay. Which two routing protocols are supported in this scenario? (Choose two.)

- A. EBGp
- B. RIP
- C. OSPF
- D. EIGRP

Correct Answer: AC

Section: (none)

Explanation

Explanation/Reference:

Reference: https://www.juniper.net/documentation/en_US/release-independent/solutions/information-products/pathway-pages/sg-009-contrail-enterprise-multicloud.pdf

QUESTION 51

Which endpoint type in Contrail Security provides multidimensional segmentation such as application, tier, deployment or site parameters?

- A. domain
- B. virtual network
- C. tag



D. address group

Correct Answer: C

Section: (none)

Explanation

Explanation/Reference:

Reference: https://www.juniper.net/documentation/en_US/contrail20/topics/concept/security-policy-enhancements.html

QUESTION 52 You are creating a new Contrail cluster within the Contrail Command setup wizard.

In this scenario, which three parameters are required to create the cluster? (Choose three.)

- A. Container Registry
- B. cluster name
- C. NTP server
- D. Default Virtual Gateway
- E. Contrail version

Correct Answer: ABE

Section: (none)

Explanation

Explanation/Reference:

Reference: https://www.juniper.net/documentation/en_US/contrail19/topics/example/contrail-command-cluster.html

QUESTION 53 Which three elements should be used in a greenfield fabric deployment? (Choose three.)

- A. multi-area OSPF
- B. BGP
- C. ZTP
- D. existing IP fabric
- E. LLDP



Correct Answer: BCD

Section: (none)

Explanation

Explanation/Reference:

Reference: https://www.juniper.net/documentation/en_US/release-independent/solutions/topics/task/configuration/new-fabric-cem-configuring.html

QUESTION 54

Click the Exhibit button.


```
{
  BgpPeerInfoData: {
    state_info: {
      last_state: "Idle",
      state: "Idle",
      last_state_at: 1394778927107639
    },
    families: [
      "IPv4:Unicast"
    ],
    peer_type: "external",
    local_asn: 54321,
    configured_families: [
      "inet-vpn"
    ],
    event_info: {
      last_event_at: 1394778927107880,
      last_event: "fsm:EvStart"
    },
    local_id: 181196816,
    send_state: "not advertising",
    peer_address: "10.204.216.253",
    peer_id: 181197053,
    hold_time: 90,
    peer_asn: 12345
  }
}
```

Within your Contrail cluster, a BGP peer is not advertising routes as expected. After issuing the `curl http://<host ip address>:8081/analytics/uves/bgp-peers` command, you receive the output show in the exhibit.

What is causing this problem?

- A. an incorrect local ID
- B. an incorrect peer type
- C. an incorrect IP address
- D. an incorrect family

Correct Answer: D

Section: (none)

Explanation

Explanation/Reference:

QUESTION 55

You have an existing spine and leaf topology that you want to add into Contrail Command for fabric management. Which

two configuration tasks are required to accomplish this task? (Choose two.)

- A. Enable OVSD in the Contrail Command UI.
- B. Enable the REST API on the network devices.
- C. Enable VXLAN routing in the Contrail Command UI.
- D. Enable netconf SSH on the network devices.

Correct Answer: CD

Section: (none)

Explanation

Explanation/Reference:

Reference: https://www.juniper.net/documentation/en_US/release-independent/solutions/information-products/pathway-pages/sg-009-contrail-enterprise-multicloud.pdf

QUESTION 56 Which role does Contrail serve in SDN?

- A. orchestrator
- B. controller
- C. gateway
- D. fabric

Correct Answer: A

Section: (none)

Explanation

Explanation/Reference:

Reference: <https://www.sdxcentral.com/networking/sdn/definitions/juniper-contrail-controller/>

QUESTION 57 What are two Contrail Command BMS life cycle management functions? (Choose two.)

- A. PXE interface management
- B. BIOS updates
- C. image management
- D. IPAM

Correct Answer: AC

Section: (none)

Explanation

Explanation/Reference:

Reference: <https://www.fedscoop.com/juniper/Enterprise-Contrail-Multicloud.pdf>



QUESTION 58

You are using Contrail as the SDN controller for your data center. You must ensure that Contrail provides DNS service to the VMs of a particular virtual network.

Which two DNS modes would accomplish this task? (Choose two.)

- A. tenant
- B. virtual DNS
- C. default
- D. reverse

Correct Answer: AB

Section: (none)

Explanation

Explanation/Reference:

Reference: https://juniper.github.io/contrail-windows-docs/For%20developers/Research/dns_in_contrail_overview/

QUESTION 59 You have a centrally routed and bridged topology.

In this scenario, routing between subnets would be performed on which two types of devices? (Choose two.)

- A. leaf
- B. spine
- C. DC gateway
- D. bridge

Correct Answer: AB

Section: (none)

Explanation

Explanation/Reference:

Reference: https://www.juniper.net/documentation/en_US/release-independent/solutions/topics/task/configuration/centrally-routed-overlay-cloud-dc-configuring.html

QUESTION 60 What are two advantages of SDN? (Choose two.)

- A. centralized management
- B. decentralized management
- C. programmability
- D. static networking

Correct Answer: AC

Section: (none)

Explanation

Explanation/Reference:

QUESTION 61 What is the proper order for creating a virtual network?

- A. Configure the IPAM, virtual network, DNS, and then the virtual machine.
- B. Configure the DNS, IPAM, virtual network, and then the virtual machine.
- C. Configure the virtual network, DNS, IPAM, and then the virtual machine.
- D. Configure the IPAM, DNS, virtual network, and then the virtual machine.



Correct Answer: D

Section: (none)

Explanation

Explanation/Reference:

Reference: https://www.juniper.net/documentation/en_US/contrail2.21/topics/task/configuration/creating-virtual-network-juniper-vnc.html

QUESTION 62 Which two statements are true about Contrail Enterprise Multicloud? (Choose two.)

- A. Contrail Enterprise Multicloud supports the intent-driven automation function using PowerShell.
- B. Contrail Enterprise Multicloud enables basic device management functions from Contrail.
- C. Contrail Enterprise Multicloud supports the intent-driven automation function using Ansible.
- D. Intent-driven automation can only be applied on virtual network elements in Contrail Enterprise Multicloud.

Correct Answer: BC

Section: (none)

Explanation

Explanation/Reference:

QUESTION 63 Which two statements about a Contrail environment are true? (Choose two.)

- A. Control nodes peer with other control nodes using XMPP.
- B. Control nodes peer with other control nodes using MP-BGP.
- C. Control nodes peer with compute nodes using XMPP.

D. Control nodes peer with compute nodes using MP-BGP.

Correct Answer: BC

Section: (none)

Explanation

Explanation/Reference:

Explanation:

The control nodes peer with the remote compute nodes by means of XMPP and peer with local gateways by means of MP-eBGP.

Reference: https://www.juniper.net/documentation/en_US/contrail20/information-products/pathway-pages/contrail-service-provider-feature-guide.pdf

QUESTION 64 In which OpenStack core service would you find disk snapshots?

- A. Glance
- B. Trove
- C. Cinder
- D. Swift

Correct Answer: A

Section: (none)

Explanation

Explanation/Reference:

Reference: https://access.redhat.com/documentation/en-us/red_hat_opensstack_platform/8/html/architecture_guide/components

QUESTION 65

Click the Exhibit button.

```
heat_template_version: 2018-03-02

resources:
  vm_1:
    type: OS::Nova::Server
    properties:
      image: cirros
      flavors: ml.tiny
      networks: [{"network": "VN-A"}]

  vm_2:
    type: OS::Nova::Server
    properties:
      image: cirros
      flavors: ml.tiny
      networks: [{"network": "VN-A"}]
```



What will be the result of deploying the Heat template shown in the exhibit?

- A. Neither VM will be deployed.
- B. Only vm_2 will be deployed and vm_1 will be overwritten.
- C. Both vm_1 and vm_2 will be deployed.
- D. Only vm_1 will be deployed and vm_2 will fail.

Correct Answer: C

Section: (none)

Explanation

Explanation/Reference:

Reference: <https://docs.onap.org/projects/onap-vnfrqts-requirements/en/latest/Chapter5/Heat/ONAP%20Heat%20Resource%20ID%20and%20Parameter%20Naming%20Convention/Nova%20Parameters.html>

