

JPR-934.VCEplus.premium.exam.61q

Number: JPR-934
Passing Score: 800
Time Limit: 120 min
File Version: 1.0



Website: <https://vceplus.com> - <https://vceplus.co>
VCE to PDF Converter: <https://vceplus.com/vce-to-pdf/>
Facebook: <https://www.facebook.com/VCE.For.All.VN/>
Twitter : https://twitter.com/VCE_Plus

JPR-934

Juniper Secure Expert



Exam A

QUESTION 1

You work as a network administrator for ABC.com. The ABC.com network consists of a single Active Directory domain named ABC.com. There are currently 120 Web servers running Windows Server and are contained in an Organizational Unit (OU) named ABC_WebServers

ABC.com management took a decision to upgrade all Web servers to Windows Server. You disable all services on the Web servers that are not required. After running the IIS Lockdown Wizard on a recently deployed web server, you discover that services such as NNTP that are not required are still enabled on the Web server.

How can you ensure that the services that are not required are forever disabled on the Web servers without affecting the other servers on the network? (Choose two.)

- A. Set up a GPO that will change the startup type for the services to Automatic.
- B. By linking the GPO to the ABC_WebServers OU.
- C. Set up a GPO with the Hisecws.inf security template imported into the GPO.
- D. By linking the GPO to the domain.
- E. Set up a GPO in order to set the startup type of the redundant services to Disabled.
- F. By linking the GPO to the Domain Controllers OU.
- G. Set up a GPO in order to apply a startup script to stop the redundant services.

Correct Answer: BE

Section: (none)

Explanation

Explanation/Reference:

QUESTION 2

You are working as the administrator at ABC.com. Part of your job description includes the deployment of applications on the ABC.com network. To this end you operate by testing new application deployment in a test environment prior to deployment on the production network.

The new application that should be tested requires 2 processors and 3 GB of RAM to run successfully. Further requirements of this application also include shared folders and installation of software on client computers. You install the application on a Windows Server Web Edition computer and install the application on 30 test client computers.

During routine monitoring you discover that only a small amount of client computers are able to connect and run the application. You decide to turn off the computers that are able to make a connection and discover that the computers that failed to open the application can now run the application.

How would you ensure that all client computers can connect to the server and run the application?

- A. By running a second instance of the application on the server.
- B. By increasing the Request Queue Limit on the Default Application Pool.
- C. By modifying the test server operating system to Windows Server Standard Edition.
- D. By increasing the amount of RAM in the server to 4GB.

Correct Answer: C

Section: (none)

Explanation

Explanation/Reference:

QUESTION 3

The ABC.com network consists of a single Active Directory domain named ABC.com. All servers on the ABC.com network run Windows Server.

ABC.com contains a Development department. ABC.com contains a domain controller named ABC-SR24 which is also configured as a DNS Server. A ABC.com employee named Clive Wilson works in the Development department. One morning Clive Wilson complains that he cannot connect to another network server.

During investigation, you notice that nslookup queries sometimes take a long time and sometimes fail altogether.

You suspect that there is a problem with ABC-SR24.

How would you configure monitoring on ABC-SR24 so that you can review individual name resolution queries?

- A. Use System Monitor to monitor host resolution queries on ABC-SR24.
- B. Use Event Viewer to view the DNS event log on ABC-SR24.
- C. Select the Log packets for debugging option on the Debug Logging tab in the DNS server properties on ABC-SR24.
- D. Use Network Monitor to capture DNS query packets on ABC-SR24.

Correct Answer: C

Section: (none)

Explanation

Explanation/Reference:

QUESTION 4

You are working as the administrator at ABC.com. The ABC.com network consists of a single Active Directory domain named ABC.com. The ABC.com network contains a DMZ that contains a two-node Network Load Balancing cluster, which is located in a data centre that is physically impenetrable to unauthorized persons.

The cluster servers run Windows Server Web Edition and host an e-commerce website. The NLB cluster uses a virtual IP address that can be accessed from the Internet.

What can you do to mitigate the cluster's most obvious security vulnerability?

- A. Configure the cluster to require IPSec.
- B. Configure the network cards to use packet filtering on all inbound traffic to the cluster.
- C. Use EFS on the server hard disks.
- D. Configure intrusion detection the servers on the DMZ.
- E. Configure Mac addressing on the servers in the DMZ.

Correct Answer: B

Section: (none)

Explanation

Explanation/Reference:



QUESTION 5

You are working for an administrator for ABC.com. The ABC.com network consists of a single Active Directory domain named ABC.com. All the servers on the network run Windows Server servers.

You have configured four servers in a network load balancing cluster. You need to enable the cluster in unicast mode although each server only has one network card. After your configuration, the NLB cluster has successfully converged.

You discover that you can optimize the use of the cluster by moving a specific application to each node of the cluster. However for this application to execute, all the nodes of the cluster must be configured by a Network Load Balancing Port Rule.

When you open Network Load Balancing Manager on one of the NLB nodes, you receive a message saying that Network Load Balancing Manager is unable to see the other nodes in the cluster.

How can you add a port rule to the cluster nodes?

- A. By opening Network Load Balancing Manager on a different host.
- B. By creating an additional virtual IP address on the cluster.
- C. By modifying the Network Connection Properties on every host.
- D. By removing each host from the cluster before creating the port rule.

Correct Answer: C

Section: (none)

Explanation

Explanation/Reference:

QUESTION 6

The ABC.com network consists of a single Active Directory domain named ABC.com. All computers on the ABC.com network are members of the ABC.com domain.

You install a new server named ABC-CA1 and configure it as a Certification Authority for the ABC.com domain.

How would you enable an Active Directory global group named CA-Admins to issue, revoke and approve certificates without assigning more permissions than necessary?

- A. Make the CA-Admins group also members of the Domain Admins group in the domain.
- B. Make the CA-Admins group also members of the local Administrators group on ABC-CA1.
- C. Grant the CA-Admins group Full Control permission to the Certificated Template container in the Active Directory.
- D. Make the CA-Admins group members of the Cert Publishers group in Active Directory.
- E. Grant the Certificate Managers role to the CA-Admins group.

Correct Answer: E

Section: (none)

Explanation

Explanation/Reference:

QUESTION 7 The ABC.com network consists of a single Active Directory domain named ABC.com.

You want to improve the security on the Windows Server domain controllers by configuring enhanced password policies and audit settings.

Which security template should you apply to the domain controllers?

- A. Setup security.inf.
- B. Hisecws.inf.
- C. DC security.inf.
- D. Securews.inf.
- E. Securedc.inf.
- F. Compatws.inf.
- G. Rootsec.inf.



Correct Answer: E

Section: (none)

Explanation

Explanation/Reference:

QUESTION 8

The ABC.com network consists of a single Active Directory domain named ABC.com. ABC.com has its headquarters in Chicago and several branch offices at various locations throughout the country. All servers on the ABC.com network run Windows Server.

You are in the process of configuring a VPN connection between the Chicago office and a branch office in Dallas using Windows Server computers running Routing and Remote Access (RRAS).

A ABC.com written security policy states that the requirements below must be met:

- Data transmitted over the VPN must be encrypted with end to end encryption.
- The VPN connection authentication should be at the computer level rather than at user level and with no credential information transmitted over the internet. How should you configure the VPN?

(Choose two.)

- A. Use a PPTP connection.
- B. Use EAP-TLS authentication.
- C. Use a PPP connection.
- D. Use MS-CHAP v2 authentication.

- E. Use MS-CHAP authentication.
- F. Use PAP authentication.
- G. Use an L2TP/IPSec connection.

Correct Answer: BG

Section: (none)

Explanation

Explanation/Reference:

QUESTION 9 The ABC.com network consists of a single Active Directory domain named ABC.com.

You deploy an enterprise certification authority (CA) on a Windows Server computer named ABC-CA1. The primary purpose of the CA is issue company users with digital certificates to enable them to authenticate with the new company Intranet website.

You create a new certificate template named Web Authentication. You enable the Web Authentication certificate template on ABC-CA1 and configure the default domain group policy so that users who log on to the domain receive a Web Authentication certificate.

The following morning users complain that they do not have certificates which can be used to authenticate to the Intranet Web site.

How can you ensure the users are issued with a certificate?

- A. By configuring ABC-CA1 to be an Enterprise Subordinate CA of a public CA such as Verisign.
- B. By modifying the permissions of the Web Authentication certificate template to give the Domain Users group the Allow – Autoenroll permission.
- C. By adding your Domain Admin user account to the Cert Managers group in Active Directory.
- D. By configuring the Default Domain Controllers GPO to assign the certificates to users when they log on.

Correct Answer: B

Section: (none)

Explanation

Explanation/Reference:

QUESTION 10

The ABC.com network consists of a single Active Directory domain named ABC.com. All servers on the ABC.com network run Windows Server. The ABC.com network also contains a file server named ABC-SR10.

A ABC.com user named Rory Allen complains that when connecting to ABC-SR10, it often takes quite some time to respond. Other users report the same problem.

Your investigations reveal that the network interface on ABC-SR10 has a large load during times when the server is slow to respond. You suspect that one of the network computers is causing the problem.

How would you identify the problematic machine?

- A. By examining the event logs on ABC-SR10.
- B. By viewing the Local Area Connection status on ABC-SR10.
- C. By using Network Monitor to inspect the network traffic on the client computers.
- D. By using System Monitor to inspect the performance monitor counters on ABC-SR10.
- E. By examining the event logs on the client computers.
- F. By using System Monitor to inspect the performance monitor counters on the client computers.
- G. By using Network Monitor to inspect the network traffic on ABC-SR10.

Correct Answer: G

Section: (none)

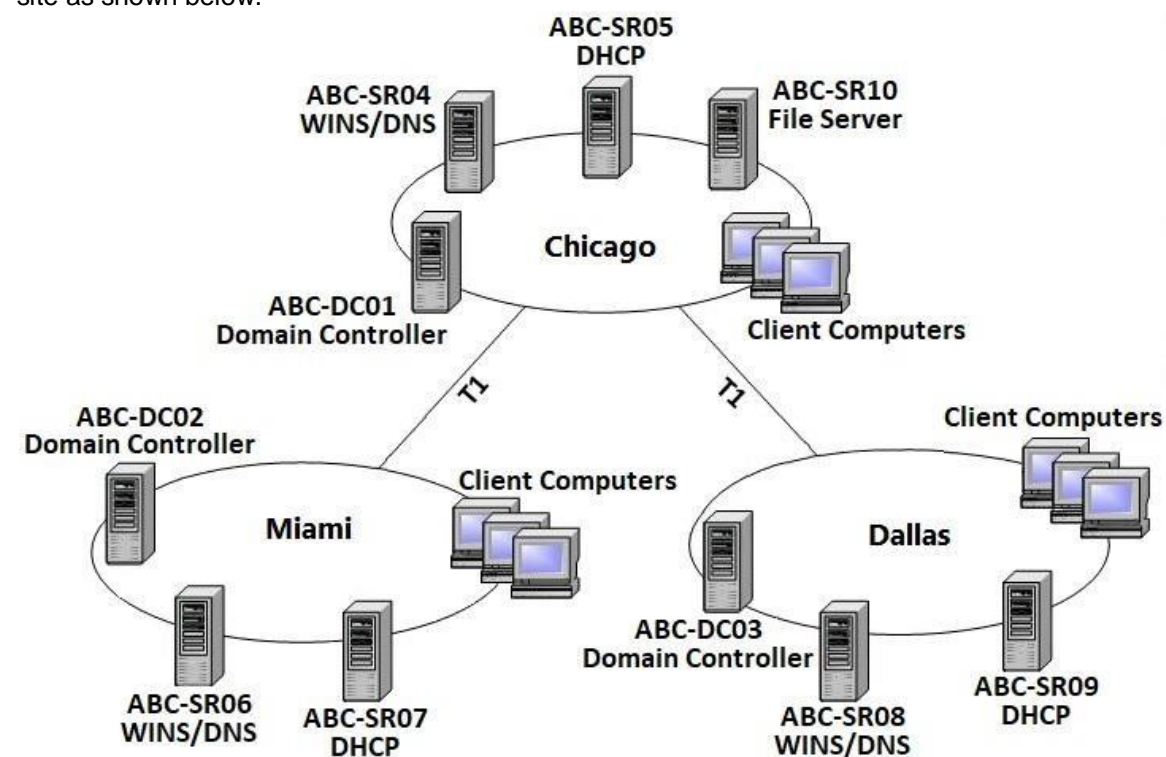
Explanation

Explanation/Reference:

QUESTION 11

The ABC.com network consists of a single Active Directory domain named ABC.com. All servers on the ABC.com network run Windows Server.

ABC.com has its headquarters in Chicago and two branch offices in Dallas and Miami. The branch offices are connected to the headquarters by means of T1 WAN links. The network at each office is configured as a separate Active Directory site as shown below.



ABC.com users in all three sites require access to a file server named ABC-SR10 that is located in the Chicago site.

Users in the Miami and Dallas offices are complaining about the unacceptable file server performance during peak working hours. You want to design a solution that provides fault tolerance for the file server and minimizes traffic over the WAN links during office hours.

Which solution would you recommend?

- A. Implement a Distributed File System (DFS) with the DFS root in the Chicago office and DFS replicas in the Dallas and Miami offices. Configure replication to occur during off-peak hours.
- B. Install Windows Server file servers in the Dallas and Miami offices. Use the File Replication Service to replicate the folders during off-peak hours.
- C. Implement a two-node file server cluster in the Chicago office using Microsoft Cluster Services.
- D. Implement a two-node file server cluster in each office using Microsoft Cluster Services.

Correct Answer: A

Section: (none)

Explanation

Explanation/Reference:

QUESTION 12

The company consists of an Active Directory domain called ABC.com. All servers on the corporate network run Windows Server.

The network contains a server that runs Internet Authentication Service (IAS) called ABC-SR01. ABC-SR01 also runs the Routing and Remote Access service to provide VPN access to the network for external users. During routine monitoring you discover that an external unauthorized user is trying to access the network through ABC-SR01.

How would you set up ABC-SR01 to log the IP addresses of the remote computers when they attempt to connect to the network using the VPN connection?

- A. Log the details of the access attempts by the VPN users by using IAS to configure the Authentication requests option enabled in the Remote Access Logging.
- B. Log the details of the access attempts by the VPN users by configuring the Routing and Remote Access service to log all IPsec connections.

- C. Log the details of the access attempts by the VPN users by enabling auditing of TCP/IP.sys.
- D. Log the details of the access attempts by the VPN users by enabling auditing of all Account Logon events on a domain controller.

Correct Answer: A

Section: (none)

Explanation

Explanation/Reference:

QUESTION 13

The ABC.com network consists of a single Active Directory domain named ABC.com. All servers on the ABC.com network run Windows Server.

ABC.com contains a member server named ABC-SR24. ABC-SR24 is configured as a File and Print server and hosts shared folders for all ABC.com users.

One morning a ABC.com user named Dean Austin complains that ABC-SR24 responds poorly at various times throughout the day. You suspect that the poor performance is caused by broadcast traffic on the ABC.com network.

What would be the best way to monitor ABC-SR24 while minimizing administrative effort?

- A. Use System Monitor to monitor the Datagrams/sec counter in the UDPv4 object.
- B. Double click on the Local Area Connection and view the status of the network connection.
- C. Open Task Manager and monitor the Networking tab.
- D. Configure an alert in Performance Monitor to send you an alert when the Datagrams/sec counter in the UDPv4 object is high.

Correct Answer: D

Section: (none)

Explanation

Explanation/Reference:



QUESTION 14

The ABC.com network consists of a single Active Directory domain named ABC.com. All servers on the ABC.com network run Windows Server.

The ABC.com domain contains two Active Directory sites named ABC-Site1 and ABC-Site2. ABC-Site1 contains a domain controller named ABC-DC1. ABC-Site2 contains a domain controller named ABC-DC2. Each domain controller is configured as a DNS server and hosts the ABC.com Active Directory Integrated Zone.

Users in ABC-Site2 report that they are unable to log on to the domain.

On a client computer in ABC-Site2, you run the “nslookup ABC-DC2” command. The command returns the IP address of ABC-DC2.

You open Active Directory Users and Computers on the client computer but you are unable to connect to ABC-DC2.

How can you resolve this problem?

- A. Run the ipconfig /registerdns command on ABC-DC2.
- B. Configure a secondary zone on ABC-DC2 for the ABC.com domain and force replication from ABC-DC1.
- C. Use Active Directory Sites and Services to force Active Directory replication.
- D. Use the Services console to restart the Net Logon service on ABC-DC2.

Correct Answer: D

Section: (none)

Explanation

Explanation/Reference:

QUESTION 15

The ABC.com network consists of a single Active Directory domain named ABC.com. All servers on the ABC.com network run Windows Server. Your instruction is to set up a child domain named us.ABC.com.

You install Windows Server on a new standalone server named ABC-DC03 and manually assign an IP address. You attempt to run dcpromo to promote ABC-DC03 to a domain controller. You select the new domain in an existing forest option. The wizard prompts you for the network credentials to join the us.ABC.com to the ABC.com forest. You then receive an error message indicating that a domain controller in the ABC.com domain cannot be found. How can you ensure that ABC-DC03 can be promoted to a domain controller in the us.ABC.com domain?

- A. By installing the DNS Server service on ABC-DC03.
- B. By creating a host (A) record for ABC-DC03 on a DNS server in the ABC.com domain.
- C. By first joining ABC-DC03 to a workgroup named us.ABC.com.
- D. By having the ABC-DC03 client DNS settings configured to use a DNS server in the ABC.com domain.
- E. By creating a delegation on a ABC.com DNS server to delegate the us.ABC.com zone to ABC-DC03.

Correct Answer: D

Section: (none)

Explanation

Explanation/Reference:

QUESTION 16

The ABC.com network consists of a single Active Directory domain named ABC.com. All the servers on the network run Windows Server servers.

The network contains a file server named ABC-SR24. ABC-SR24 hosts shared folders for users in the Sales department.

All shared folders are backed up using a Normal backup on a weekly basis over the weekend. An incremental backup of the shared folders is taken every night.

A Copy backup of the shared folders is taken every Thursday night after the incremental backup. On Friday morning, the Sales manager reports that he has accidentally deleted an important file. He asks you to restore the file as quickly as possible. He doesn't know when the file was last modified.

From which backup tape or tapes should you restore the file?

- A. The last normal backup and the last incremental backup.
- B. The last normal backup and the incremental backups from Monday, Tuesday, Wednesday and Thursday.
- C. The last incremental backup.
- D. The last normal backup.
- E. The last Copy backup.



Correct Answer: E

Section: (none)

Explanation

Explanation/Reference:

QUESTION 17

The ABC.com network consists of a single Active Directory domain named ABC.com. All servers on the ABC.com network run Windows Server.

ABC.com has a main office in Chicago and a branch office in Miami. The two offices are configured as Active Directory sites and are connected by a 56Kbps WAN link which is available only during office hours.

The Miami site contains a domain controller named ABC-DC02.

A ABC.com user named Andy Reid works in the Miami office. One morning Andy Reid complains that the response times on the WAN link is slow. You then investigate the problem and discover that the problem is due to Active Directory replication activity.

How can you reduce the traffic going over the WAN connection?

- A. By moving the computer object for ABC-DC02 to the Active Directory site for the Chicago office.
- B. By configuring ABC-DC02 as a DNS server.
- C. By having the replication interval decreased on the site link between the two sites.
- D. By having the replication interval increased on the site link between the two sites.
- E. By removing the Global Catalog from ABC-DC02 and enabling universal group membership in the Miami office.

Correct Answer: D

Section: (none)

Explanation
Explanation/Reference:

QUESTION 18

You are the server administrator for SRV05 which is a Windows Server Standard Edition file server in your domain. Your backup strategy utilizes one full backup and then daily differential backups. SRV05 has eight 72GB SCSI3 10,000RPM drives in an external drive array for data and are set up using hardware RAID 5. SRV05 also has two additional 72GB SCSI3 10,000RPM drives internal to the system and they are configured in a RAID 1 arrangement. This volume holds the system and boot partitions for the server's operating systems and a small amount of local application data. The full back up is performed each Saturday at 9:00PM EST. The full back up takes 2 hours. The daily differential backups are performed each day at 9:00PM, Monday through Friday. There is no full backup nor differential backup performed on Sunday. The amount of time needed for the differential backups varies but it is never less than 20 minutes and the maximum time never exceeds 75 minutes. DNS07 has a hard disk failure in the external array at approximately 6:00PM on a Saturday. At 7:20PM a second drive in the external array also fails. What needs to be done to bring the server back to working order so that users can access the data on the server?
 Select the best answer.

- A. The failed drives need to be replaced and the data needs to be restored from the full backup.
- B. The failed drives need to be replaced and the data needs to be restored from the full backup and all of the differential backups.
- C. The failed drives need to be replaced. Nothing additional needs to be done because the RAID configuration allows the system to continue to run.
- D. The failed drives need to be replaced and the data needs to be restored from the full backup and the last differential backup.

Correct Answer: D
Section: (none)
Explanation

Explanation/Reference:

QUESTION 19

You work as a Network Administrator for ABC.com. The company has a Windows Active Directory-based single domain single forest network. The functional level of the forest is Windows Server. The company's headquarters is located at Los Angeles. The company has three branch offices located at San Jose, Oakland, and San Francisco. The company's network is shown in the image below:



All the offices are connected to each other by using 56Kbps demand-dial connections. The branch offices and the headquarters are required to communicate with each other on a regular basis. As you are using demand-dial connections, you do not want the routing updates to be broadcast throughout the network. However, for reliable communications, any changes to the network should be sent to the routers configured on the network. Every router in the network is a server running Windows Server. Which of the following protocols will you use on the routers?

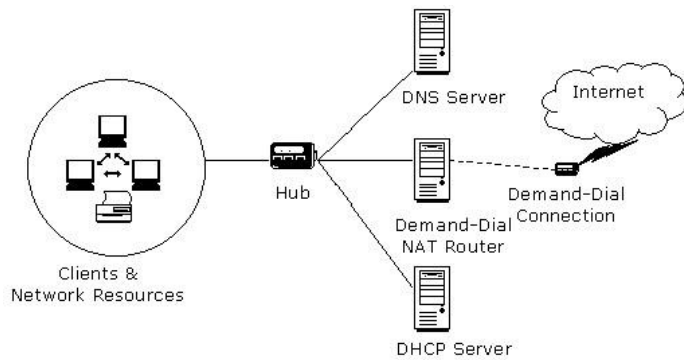
- A. RIP 1
- B. CHAP
- C. RIP 2
- D. OSPF

Correct Answer: C
Section: (none)
Explanation

Explanation/Reference:

QUESTION 20

You work as a Network Administrator for Venus ABC.com. The company has a Windows Active Directory-based single domain single forest network. The functional level of the forest is Windows Server. The company wants to expand its network. The clients on the network require Internet connectivity through the router. You plan to install NAT for this purpose. The network plan of the company is shown in the image below:



As the number of clients is quite high, a Class A private network range is required. Which of the following is the correct Class A network address range that is set aside for private use and barred from routing over the network?

- A. 10.0.0.0 to 10.255.255.255
- B. 172.16.0.0 to 172.31.255.255
- C. 192.168.0.0 to 192.168.255.255
- D. 111.0.0.0 to 111.255.255.255

Correct Answer: A

Section: (none)

Explanation

Explanation/Reference:

QUESTION 21

You work as a Network Administrator for ABC.com. The company has a Windows Active Directory-based single domain single forest network. The functional level of the forest is Windows Server. An application named Accounts is installed on the network. The Accounts application uses a shared folder named AccFolder to keep all its data. The AccFolder folder is placed on a file server named uCFileServer. All users in the network use the application to update the accounts information of various clients of the company. The application opens various data files to work upon. You are required to accomplish the following tasks:

- All files in the AccFolder folder should be backed up automatically twice daily.
- The backup process should take a backup of all the open files in the folder.

In order to accomplish the tasks, you take the following steps:

- Configure the Backup and Restore Wizard to take a backup of AccFolder.
- Unselect the Disable volume shadow copy check box in the Backup and Restore Wizard.
- Set the schedule of the Backup and Restore Wizard to take a backup every 12 hours through the Advanced Schedule Options.

What will happen after taking the required steps?

- A. The backup process will take a backup of all the open files in the folder.
- B. Both tasks will be accomplished.
- C. All the files in the AccFolder folder will be backed up automatically twice daily.
- D. None of the tasks will be accomplished.

Correct Answer: B

Section: (none)

Explanation

Explanation/Reference:

QUESTION 22

You work as a Network Administrator for ABC.com. The company has a Windows Active Directory-based single domain single forest network. The functional level of the forest is Windows Server. An intranet-based Web site is required to be installed on the network. Two servers are available for installing the application. You are required to accomplish the following tasks:

- The Web site should be available all the time for the clients.
- Both servers should be capable of fulfilling the clients' requests at a time.

You take the following steps:

- Create a two-node server cluster.
- Configure one server as an active server and the other as a passive server.

Which of the required tasks will be accomplished by taking these steps?

- A. Both servers will be capable of fulfilling the clients' requests at a time.
- B. None of the tasks will be accomplished.
- C. The Web site will be available all the time for the clients.
- D. Both tasks will be accomplished.

Correct Answer: C

Section: (none)

Explanation

Explanation/Reference:

QUESTION 23

You administer your company's network. The network consists of a single Active Directory domain. All servers run Windows Server. The network contains a two-node server cluster. The company's security expert informs you that the password on the domain user account that is used for the Cluster service has been compromised and must be changed immediately. Your actions should cause minimal or no disruption of the services provided by the cluster because the cluster is running a mission-critical application. Which of the following should you do?

- A. Use Active Directory Users and Computers to reset the password.
- B. Use the Services console to change the password on any one of the cluster nodes.
- C. Use the Cluster command with the appropriate options.
- D. Use the dsmod user command with the appropriate options.
- E. Use the dsmod computer command with the appropriate options.

Correct Answer: C

Section: (none)

Explanation

Explanation/Reference:

QUESTION 24

You are the network administrator for your company's network. The network consists of two Active Directory domains: lmiweb.com and hr.lmiweb.com. The lmiweb.com domain supports most of the company's user accounts and resources. The hr.lmiweb.com domain contains the user accounts and resources for the company's human resources department.

The company has deployed an extensive 802.11b wireless network. Access points (APs) have been deployed throughout the company to provide users in all departments with wireless connectivity and serve as bridges to the wired LAN. A total of 325 users, including all members of hr.lmiweb.com, have been issued laptops with 802.11bcompliant network adapters. No other computers have wireless connectivity. All wireless LANs have Wired Equivalent Privacy (WEP) enabled to secure these communications.

Human resources users work throughout the company providing employee training and informational seminars. These users require access to the wireless LAN in all company locations. You must ensure that all human resources data is as secure as possible as it is transmitted across the wireless LAN. Only users with accounts in only specific users/computers groups should be able to access the human resources division's wireless LAN. In addition, users without accounts in this domain should not be able to view or select the LAN from their list of available networks. What should you do? Each correct answer presents part of the solution. (Choose three.)

- A. Configure MAC filtering on each department's wireless LAN.
- B. Configure MAC filtering on the human resources wireless LAN.
- C. Enable Service Set Identifier (SSID) broadcasting on each department's access point.
- D. Configure a unique Service Set Identifier (SSID) for each department's wireless LAN.
- E. Configure a unique Service Set Identifier (SSID) for the human resources wireless LAN.
- F. Enable Service Set Identifier (SSID) broadcasting on all the human resources access points.
- G. Disable Service Set Identifier (SSID) broadcasting on all the human resources access points.

Correct Answer: BEG

Section: (none)

Explanation

Explanation/Reference:



QUESTION 25

You are the network administrator for your company. The network consists of a single Active Directory domain with five domain controllers that run Windows Server, Enterprise Edition. You are updating the public key infrastructure (PKI) for your company. Issuing Certification Authorities (CAs) have been provided certificates with a validity period of five years. Certificates are issued to enable network users to encrypt files on their computers. Basic EFS certificates have been issued and have been configured with the default validity period. You want to configure all new EFS certificates so that they are valid for up to three years. What should you do? Each correct answer presents part of the solution. (Choose all that apply.)

- A. Duplicate and rename the Basic EFS certificate template.
- B. Open the Basic EFS certificate template Properties dialog box.
- C. Select the General tab and edit the validity period.
- D. Select the General tab and edit the renewal period.
- E. Select the Security tab and change the permission for the Administrators group to Enroll.

Correct Answer: AC

Section: (none)

Explanation

Explanation/Reference:

QUESTION 26

You administer your company's Web site, which contains executable programs. You want to provide the highest level of trust to Internet users who download your programs, and you want to ensure that users' browsers will allow them to download the programs. Your company's network includes an enterprise root Certification Authority (CA) and an issuing enterprise subordinate CA. Which of the following actions should you take?

- A. Request a Code Signing certificate from your company's enterprise subordinate CA.
- B. Request a Code Signing certificate from a commercial CA.
- C. Request a User Signature Only certificate from your company's enterprise subordinate CA.
- D. Request a User Signature Only certificate from a commercial CA.

Correct Answer: B

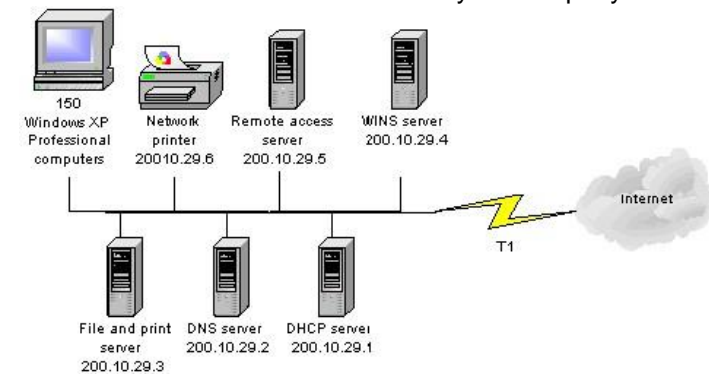
Section: (none)

Explanation

Explanation/Reference:

QUESTION 27

You are one of the administrators for your company's Windows Server network. The relevant portion of the network is presented in the following exhibit.



All servers, client computers and one network print device are currently configured with static IP addresses. The network IP address is 200.10.29.0. A DHCP server has been deployed but has not yet been configured. You must configure a new scope that will provide the existing client computers with IP configurations. The new scope should support an additional 25 new client computers that will be deployed within the next two months.

Which settings should be included in the new DHCP scope? Each correct answer presents part of the solution. (Choose three.)

- A. subnet mask: 255.255.255.0
- B. subnet mask: 255.255.255.128
- C. DHCP scope starting IP address: 200.10.29.7

- DHCP scope ending IP address: 200.10.29.254
- D. DHCP scope starting IP address: 200.10.29.1
DHCP scope ending IP address: 200.10.29.254
- E. DHCP scope exclusion range starting IP address: 200.10.29.1DHCP scope exclusion range ending IP address: 200.10.29.6
- F. DHCP scope exclusion range starting IP address: 200.10.29.1
DHCP scope exclusion range ending IP address: 200.10.29.254

Correct Answer: ADE

Section: (none)

Explanation

Explanation/Reference:

QUESTION 28

You administer your company's network. The network consists of a single Active Directory domain. All servers run Windows Server. The network contains a two-node server cluster. The company's security expert informs you that the password on the domain user account that is used for the Cluster service has been compromised and must be changed immediately. Your actions should cause minimal or no disruption of the services provided by the cluster because the cluster is running a mission-critical application.

Which of the following should you do?

- A. Use Active Directory Users and Computers to reset the password.
- B. Use the Services console to change the password on any one of the cluster nodes.
- C. Use the Cluster command with the appropriate options.
- D. Use the dsmod user command with the appropriate options.
- E. Use the dsmod computer command with the appropriate options.

Correct Answer: C

Section: (none)

Explanation

Explanation/Reference:



QUESTION 29

You administer your company's Windows network. The network consists of 25 Windows Server computers. The network contains an offline root Certification Authority (CA) located in the main office and a subordinate issuing CA in the main office and each of the remaining four retail locations.

One of the four retail locations has been purchased and will operate as a franchise. You must ensure that resources on the company network will not accept certificates from the associated subordinate CA in this retail location after the sale is completed. Your solution must use a minimum amount of administrative effort.

What should you do? (Choose three. Each correct answer presents part of the solution.)

- A. On the company's root CA, revoke the certificate of the subordinate CA.
- B. Disconnect the subordinate CA from the network.
- C. On the subordinate CA, remove the CA software and remove the CA files.
- D. On the subordinate CA, revoke the certificates that it has issued.
- E. Publish a new Certificate Revocation List.
- F. Copy the Edb.log file from the root CA to its Certification Distribution Point on your network.
- G. Copy the Edb.log file from the subordinate CA to its Certification Distribution Point on your network.
- H. Copy the Certificate Revocation List file to the Certificate Distribution Point on your network.

Correct Answer: AEH

Section: (none)

Explanation

Explanation/Reference:

QUESTION 30

You are the backup administrator for your company. You are responsible for ensuring that all data on ten files servers are protected against data loss. Normal business hours from 8 A.M. to 5 P.M., Monday through Friday, are observed. Network access is prohibited outside normal business hours.

A member server named File1 contains shared folder accessed by users in the sales department. The disk structure of File1 is shown in the following exhibit:

Volume	Hosts	Disk Size	Available Space
C	System and Boot Files	9 GB	2.54 GB
D	Shared Folders and User Profiles	25 GB	9.8 GB
F	Shared Folders	75 GB	53.35 GB

You have scheduled a daily backup of File1 as shown in the exhibit. (Click the Exhibit(s) button.) Users in the Sales department frequently leave documents open on their desktops when they leave work. These users occasionally request that you restore a previous version of a file from backup. However, some of these files are not included in recent backup sets. You must modify the backup procedures for File1 so that all files, including open documents, will be included in the daily backup. You also want to provide users with the ability to restore their files.

What should you do? (Choose all that apply. Each correct answer presents part of the solution.)

- A. Move all shared user data folders from drive D to drive F.
- B. Move all shared folders user data from drive F to drive D.
- C. Enable Shadow Copies of Shared Folders on drive F.
- D. Enable Volume shadow copy for the scheduled backup job.
- E. Select the Disable volume shadow copy option for the scheduled backup job.
- F. Install the Previous Versions Client software on all Sales department computers.
- G. Create a new daily backup job by using the same settings, but clear the Disable volume shadow copy option.

Correct Answer: ACFG

Section: (none)

Explanation

Explanation/Reference:



QUESTION 31

You are proposing the purchase of a new e-mail server for your corporate network. You have specified a new server from a major OEM manufacturer that is configured with a powerful quad-processor configuration, hot-swappable hard drives, and redundant power supplies and network adapters, with a three-year onsite warranty. Due to a budget crunch, the chairperson of the budget committee has suggested that the company can make do with a less powerful workgroup server from a local computer store. This server has only a single processor and no redundancy features, and a one-year onsite warranty. What reasons can you provide the budget committee members that might convince them to authorize the purchase of the server that you specified, even though it has a higher price tag?

- A. A more powerful server will provide better performance and scalability as the company's needs grow over time.
- B. Redundant hardware components will increase the server's availability to service the needs of the company's users and customers.
- C. The extended warranty on the more powerful server will increase support costs over time, since you're paying to cover the machine under warranty for three times as long.
- D. Windows Server requires at least a dual-processor configuration.

Correct Answer: AB

Section: (none)

Explanation

Explanation/Reference:

QUESTION 32

The only protocol used by your network is TCP/IP, despite the fact that workstations in the organization do not have access to the Internet. A user has been accessing files on server on your network and now wants to connect to a Web server that is used as part of the company's intranet. The user enters the URL of the Web site into Internet Explorer. Which of the following servers will be used to provide information needed to connect to the Web server?

- A. DHCP server
- B. DNS server
- C. WINS server
- D. File server

Correct Answer: B

Section: (none)

Explanation

Explanation/Reference:

QUESTION 33

You want to set up a discussion group that can be accessed over the corporate intranet, so that users can view and post messages in a forum that can be viewed by other employees. Which of the following services would you use to implement this functionality?

- A. HTTP
- B. FTP
- C. NNTP
- D. SMTP

Correct Answer: C

Section: (none)

Explanation

Explanation/Reference:

QUESTION 34

Which of the following addresses is suitable for dividing into at least nine subnets, each with the ability to support 200 hosts per network?

- A. 10.1.1.0/24
- B. 10.1.1.0/20
- C. 10.1.1.0/19
- D. 10.1.1.0/22

Correct Answer: BC

Section: (none)

Explanation

Explanation/Reference:

QUESTION 35

Your IT Director has been reading again. He has decided that he wants to convert the network to OSPF, but he is having some difficulty with terminology. He knows that an OSPF router can serve one of four roles. His problem is that he can't remember which role exists when one of the router's interfaces is on the backbone area. Help him out.

Which of the following is it?

- A. Internal router
- B. Area border router
- C. Backbone router
- D. Autonomous system boundary router

Correct Answer: C

Section: (none)

Explanation

Explanation/Reference:

QUESTION 36 You have enabled RRAS on your Windows Server computer. You want to set up IP packet filtering to help you manage access from remote clients. Where in the Routing and Remote Access console will you enable IP packet filters?

- A. The properties of the remote-access ports
- B. The properties of the remote-access server

- C. The profile of a remote-access policy
- D. The conditions of a remote-access policy

Correct Answer: C

Section: (none)

Explanation

Explanation/Reference:

QUESTION 37

You have an IAS server running Windows Server. It supports a group of RRAS servers used to manage VPN connections for clients. You are configuring the authentication methods for the IAS server and want to allow the clients to use smart cards for secure and convenient authentication. Which of the following authentication protocols should you select?

- A. MS-CHAP
- B. EAP-TLS
- C. MD5 CHAP
- D. MS-CHAP v2

Correct Answer: B

Section: (none)

Explanation

Explanation/Reference:

QUESTION 38

You have configured an RRAS server on one Windows Server computer and an IAS server on another, and configured the RRAS server to use the IAS server for authentication. In RADIUS terminology, which computer(s) are referred to as network access servers?

- A. The IAS server
- B. The RRAS servers
- C. The clients of the RRAS server
- D. Both the IAS and RRAS servers

Correct Answer: B

Section: (none)

Explanation

Explanation/Reference:

QUESTION 39

You are the administrator of a Windows Server network. You have five WINS servers and need to reconfigure the replication topology as a result of some recent uABCrades to your WAN links. All of your WAN links connecting the head office and your four branch offices now have ample bandwidth to handle additional traffic. You want to ensure the shortest convergence time of replicated records, while at the same time keep the number of replication partnership agreements to an absolute minimum. What replication topology should you choose? (Select the best answer.)

- A. Ring topology
- B. Mesh topology
- C. Hub-and-spoke topology
- D. Hybrid of ring and hub-and-spoke topology

Correct Answer: C

Section: (none)

Explanation

Explanation/Reference:

QUESTION 40

You are configuring a remote access server on a Windows Server computer. The same server is acting as a domain controller and DHCP server, assigning IP addresses to clients. Which of the following is the simplest method of assigning IP addresses for remote clients?

- A. Manually configure each client with an IP address.
- B. Configure the RRAS server to use DHCP.
- C. Configure a static address pool.
- D. Use APIPA.

Correct Answer: B

Section: (none)

Explanation

Explanation/Reference:

QUESTION 41

You have several users who dial in to a remote access server using multilink connections, combining two modems into a single link. Although this provides a higher bandwidth to the users, you find the server runs out of modem lines frequently, and most users are not using their connections to their full potential. Which of the following is a solution to this issue?

- A. Disable multilink connections.
- B. Set the maximum number of multilink ports to one.
- C. Use VPN instead of dial-in access.
- D. Enable Bandwidth Allocation Protocol (BAP).

Correct Answer: D

Section: (none)

Explanation

Explanation/Reference:

**QUESTION 42**

You have configured a VPN server running Windows Server 200 and RRAS. Most clients are able to access the server, but clients running Windows 98 are reporting that they are unable to connect. Which of the following is most likely the cause of this problem?

- A. Computer certificates are not installed.
- B. L2TP is not enabled on the server.
- C. PPTP is not enabled on the server.
- D. Windows 98 does not support VPN client access.

Correct Answer: C

Section: (none)

Explanation

Explanation/Reference:

QUESTION 43

You have configured a WAP using the EAP-TLS protocol. The WAP is connected to a LAN with a Windows Server server. Which of the following additional tasks may be necessary to ensure that wireless clients can connect? (Choose all that apply.)

- A. Enable PPP authentication.
- B. Issue computer certificates to clients.
- C. Issue user certificates or smart cards to users.
- D. Install and configure IAS.

Correct Answer: BC

Section: (none)

Explanation

Explanation/Reference:

QUESTION 44 You have recently purchased a new single-CPU, Intel Xeon-based server. This hardware will be used to run a multithreaded CPU-intensive application. How can you ensure that the application performs at its best on the hardware provided?

- A. Turn on hyperthreading.
- B. Add a second CPU.
- C. Boost the processing priority of the applications threads.
- D. Disable hyperthreading.

Correct Answer: A

Section: (none)

Explanation

Explanation/Reference:

QUESTION 45

You are working on an existing server. The NIC manufacturer has notified you of an updated driver for your card that will greatly improve performance. You download and install the new driver. Before you reboot the system, you perform an ASR backup. When you reboot the system, it reaches the graphical portion of the boot process and presents a STOP message. What is the proper process for recovering from this problem?

- A. Perform an ASR restore from the ASR backup set you created before the reboot.
- B. Reboot the system, press F8 when prompted during the boot process, select Last Known Good Configuration, and press Enter.
- C. Reinstall the operating system and do a restore of the system from tape backup.
- D. Reboot the system, press F8 when prompted during the boot process, select Safe Mode, and press Enter.

Correct Answer: B

Section: (none)

Explanation

Explanation/Reference:

QUESTION 46

You are a consultant. You have been called in to troubleshoot a malfunctioning NLB cluster that is supposed to serve Web pages with IIS. The cluster contains four hosts, but only one host at a time will successfully form the cluster. Clients appear to have no problems connecting to any of the single-host cluster configurations. What is the most likely cause of the problem?

- A. The hosts are configured with duplicate priorities.
- B. The hosts are configured with different port rules.
- C. The hosts are configured with different cluster IP addresses.
- D. The hosts are configured with duplicate cluster IP addresses.

Correct Answer: A

Section: (none)

Explanation

Explanation/Reference:

QUESTION 47

One of your hosts in multiple-host NLB cluster requires maintenance. The cluster is heavily used and central to the profitability of your company. You want to bring the node down for service in the least disruptive way. How should you accomplish this goal?

- A. Use the drainstop option on the host needing maintenance.

- B. Use the drainstop option on all the hosts in the cluster not needing maintenance.
- C. Use the suspend option on the host needing maintenance.
- D. Use the suspend option on all the hosts in the cluster not needing maintenance.

Correct Answer: A

Section: (none)

Explanation

Explanation/Reference:

QUESTION 48

You have been hired as a consultant to help deploy IPSec for the network of a mediumsize manufacturing firm that is developing a number of new products and must share sensitive data about its products over the network. As part of the planning process, you must determine the best authentication method to use with IPSec. What are the authentication methods that can be used with IPSec? (Select all that apply.)

- A. Kerberos v5
- B. Perfect Forward Secrecy (PFS)
- C. Shared secret
- D. Diffie-Hellman groups

Correct Answer: AC

Section: (none)

Explanation

Explanation/Reference:

QUESTION 49

You want to use the RSoP tool in logging mode to build some reports on the existing policy settings of one of your client computers. You have used RSoP before in planning mode, but never in logging mode. You open the RSoP Wizard from the Active Directory Users and Computers console, as you've done before, but you notice that there is no mechanism for selecting the mode, and only planning mode seems to be available. What is the problem?

- A. The RSoP Wizard runs only in planning mode.
- B. You should open the RSoP Wizard from Active Directory Sites and Services instead.
- C. You should open the RSoP Wizard from the RSoP MMC instead.
- D. You can select logging mode when you open the RSoP in Active Directory Users and Computers. You must have overlooked the option.

Correct Answer: C

Section: (none)

Explanation

Explanation/Reference:

QUESTION 50

You have recently hired a new junior administrator to assist you in running the network for a medium-sized manufacturing company. You are explaining to your new assistant that AD objects are assigned security descriptors to allow you to implement access control. You tell your assistant that the security descriptor contains several different components. Which of the following are contained in the security descriptor for an object? (Select all that apply.)

- A. Discretionary access control list
- B. System access control list
- C. Dynamic access control list
- D. Ownership information

Correct Answer: ABD

Section: (none)

Explanation

Explanation/Reference:

QUESTION 51 You are implementing a new wireless network and need to change the default settings for the equipment on the WLAN. What information should you change? (Select all that apply.)

- A. SSID password
- B. SSID network name
- C. Domain Administrator password
- D. Domain Administrator account should be renamed

Correct Answer: AB

Section: (none)

Explanation

Explanation/Reference:

QUESTION 52

You have a number of users who need to be able to roam through the building with their laptop computers and still stay connected to the network. Because of the nature of their work, it is important that they have relatively fast access for transferring a lot of very large data files over the network. You need to implement a wireless network that can connect devices up to 54 Mbps and a minimum of 24 Mbps. Which IEEE standard should you choose?

- A. 802.15
- B. 802.11a
- C. 802.11b
- D. 802.1x

Correct Answer: B

Section: (none)

Explanation

Explanation/Reference:



QUESTION 53

You are setting up a procedure to keep documents exchanged between members of the R & D department secret. They will be sending these documents across the Internet to each other. Which PKI process will you need to employ to achieve this?

- A. Confidentiality
- B. Non-repudiation
- C. Authentication
- D. Data Integrity

Correct Answer: A

Section: (none)

Explanation

Explanation/Reference:

QUESTION 54

You are one of the Web hosting administrators for your company's e-commerce environment.

You are trying to configure a Web server called WEBSRV01 running Windows Server Standard Edition. WEBSRV01 currently hosts three different Web sites, two of which only offer static content and one that uses Active Server Pages. How can you enable Web services for your server so that it will allow you to offer up the different types of content as required on each of the Web sites hosted on the server, using the least amount of administrative effort and maintaining a high level of security on the base OS of the server? Select the best answer.

- A. Use the Configure Your Server Wizard to configure the server in the Application Serve role by using the default settings provided.
- B. Use the Configure Your Server Wizard to configure the server in the Web server role b using the default settings provided.
- C. Add the IIS service via the Control Panel and Add/Remove Windows Components. Then, install the service and dynamic content by manually configuring all of the required settings.
- D. Use the Configure Your Server Wizard to configure the server in the Application Serve role, and manually choose the options for dynamic content.
- E. Add the IIS service via the Control Panel and Add/Remove Windows Components. Then, install the service and dynamic content using the default settings provided when prompted.

Correct Answer: D

Section: (none)

Explanation

Explanation/Reference:

QUESTION 55

You are a network administrator for your Windows Server domain and you are updating the network configuration for your company. You have used part of the 191.99.74.0/16 IP address range that your company owns and segmented the networks in this new location in such a way to allow for 60 hosts per subnet currently and also allow for an anticipated growth of 15% for the client systems.

Your design also calls for adding a routing configuration that will allow you to forward IP multicast traffic and the use of the Internet Group Management Protocol (IGMP). You have decided to use the Routing and Remote Access Service on your Windows Server system to handle this requirement in your environment. You also need to define the standards for your network nodes with regard to multicasting on your network.

What is a specific characteristic that is required of a host or network node that is multicast-capable? Select the best answer.

- A. The network node must be able to use a multicast routing protocol to propagate multicast group listening information to other multicast-capable nodes.
- B. The network node must be able to listen for all multicast traffic on all attached networks. Upon receiving multicast traffic the node would have to forward the multicast packet to attached networks where other nodes are listening or wheredownstream routers have nodes that are listening.
- C. The network node must be able to listen for IGMP membership report messages and update the TCP/IP multicast forwarding table.
- D. The network node must be able to register the multicast addresses being listened to by the node with local routers so that multicast packets can be forwarded to the network of the node.

Correct Answer: D

Section: (none)

Explanation

Explanation/Reference:

QUESTION 56

You work as It Admin at ABC.com. The ABC.com network consists of a domain named ABC.com. The servers at the ABC.com network run Windows Server. The ABC.com network has a file server named ABC-SR18. ABC-SR18 hosts shared folders.

During your routine monitoring, you notice that ABC-SR18 has a connectivity issue. To investigate further you run Network Monitor, but notices that during capturing, network packets were dropped.

What actions must you take to minimize the dropping of packets while monitoring ABC-SR18?

- A. You should configure a persistent demand-dial connection.
- B. You should configure a two-way initiated demand-dial connection.
- C. You should use dedicated capture mode when utilizing the Network Monitor.
- D. You should select the Do not overwrite events option in the Event Viewer.

Correct Answer: C

Section: (none)

Explanation

Explanation/Reference:

QUESTION 57

You work as the network administrator at ABC.com. The ABC.com network has a domain named ABC.com. The servers at the ABC.com network run Windows Server. ABC.com has a subsidiary named Test Labs, Inc. that has a domain named testlabs.com.

The ABC.com network has a DNS server named ABC-SR05. ABC-SR05 acts as a secondary zone for testlabs.com

What actions must you take to track when the DNS server at Test Labs, Inc. sends notifications of modifications in the zone of testlabs.com to ABC-SR05?

- A. You must run the gresult command in verbose mode.
- B. You must select debug logging and set the log to store Notification events on ABC- SR05.
- C. You must run the secdit command in analysis mode.
- D. You must configure a two-way initiated demand-dial connection.

Correct Answer: B

Section: (none)

Explanation

Explanation/Reference:

QUESTION 58

You work as the network administrator at ABC.com. The ABC.com network consists of a domain named ABC.com. The servers at the ABC.com network run Windows Server.

The ABC.com network has a Web server named ABC-SR11. During a routine monitoring you notice an increase in network traffic. Due to this you need to find out the MAC address of the workstation that initiated the transfers and the command that was used. However, your action must not affect ABC-SR11.

What actions must you take?

- A. You must run the ipconfig/registerdns.
- B. You must use the Netmon utility.
- C. You must capture the IP traffic to ABC-SR11.
- D. You must Enable Server Message Block (SMB) signing on all the workstations.

Correct Answer: C

Section: (none)

Explanation

Explanation/Reference:

QUESTION 59

You work as the network administrator at ABC.com. The ABC.com network consists of a domain named ABC.com.

ABC.com has several subsidiary companies whose Web sites and DNS zones are hosted on servers at ABC.com.

What actions must you take to allow the DNS server at ABC.com to generate a report of the listed zones on a weekly basis?

- A. You need to utilize the ipconfig/registerdns.
- B. You need to NetMon utility on the DNS server.
- C. You need to utilize the dnscmd utility on the DNS server.
- D. You need to utilize the ADSIEdit utility on the DNS server.

Correct Answer: C

Section: (none)

Explanation

Explanation/Reference:

QUESTION 60

You have just installed the DHCP service on a stand-alone Windows Server system. You place the server on one of the subnets. You soon discover that clients are not leasing an IP address from the server. You open the DHCP console and see that the DHCP service is not started. What should you do?

- A. Reinstall the DHCP service.
- B. Add the DHCP server to the domain.
- C. Authorize the DHCP server.
- D. Check the system event log to find any clues as to why the service will not start.

Correct Answer: D

Section: (none)

Explanation

Explanation/Reference:

QUESTION 61

You are using Network Monitor to analyze IPSec packets that are using ESP. The data packet section is not viewable. What must you do to properly view the data packet section of the frames?

- A. Set ESP to use the same encryption policy as the Network Monitor machine.
- B. Disable AH policies.
- C. Install the ESP filter DLL and update the parser.ini file.
- D. Configure the ESP policy to use null encryption.

Correct Answer: D

Section: (none)

Explanation

Explanation/Reference:

