

HPE0-J68.VCEplus.premium.exam.59q - DEMO

Number: 000-000
Passing Score: 800
Time Limit: 120 min
File Version: 1.0



Website: <https://vceplus.com> - <https://vceplus.co>
VCE to PDF Converter: <https://vceplus.com/vce-to-pdf/>
Facebook: <https://www.facebook.com/VCE.For.All.VN/>
Twitter : https://twitter.com/VCE_Plus

HPE0-J68


HPE Storage Solutions



Exam A

QUESTION 1

Refer to the exhibit.



The screenshot displays the configuration page for a volume named 'Volume VMwareDS-GF.0'. The status is 'Normal'. The 'General' section shows the application set as 'VMwareDatastores-GF', storage tier as 'SSD 150 K (CPG: SSD_r6)', snapshot tier as 'SSD 150 K (CPG: SSD_r6)', and WWN as '60002AC0000000000000000620007EA8D'. The 'Capacity' section shows a virtual size of 20.00 GiB, with 0% used and 0% host written. The 'Efficiency' section shows data reduction is 'On' and compaction ratio is '—'. The 'Copies' section shows 6 copies exist for this volume. The 'Host Set Exports' section shows 1 host set export exists for this volume. The 'Host Exports' section shows 0 host exports exist for this volume. The user 'demouser' is logged in.

You are configuring a new HPE array and verifying properties of a set of volumes.

Which RAID level is used on the VMwareDatastores-GF volume?

- A. RAID 0
- B. RAID 6
- C. Triple Parity+
- D. RAID 5

Correct Answer: D

Section: (none)

Explanation**Explanation/Reference:****QUESTION 2**

You have proposed that a customer replace their legacy SAN switches with new B-Series switches. They are concerned about the management of all the devices, so you have included SANnav in the proposal.

What are the benefits of SANnav that you should emphasize to this customer? (Choose two.)

- A. It runs in a dedicated JVM
- B. It offers automated SPOCK validation
- C. It runs in a browser
- D. It provides a global View
- E. It provides fine-grain visibility into Storage Fabrics (FC + Ethernet)

Correct Answer: CD

Section: (none)

Explanation**Explanation/Reference:**

Reference: <https://h20195.www2.hp.com/v2/gethtml.aspx?docname=a00059756enw>

QUESTION 3

A customer has completely virtualized their datacenter with VMware. You propose a SimpliVity solution to replace their aging hardware.

Which SimpliVity features should you emphasize in your presentation? (Choose two.)

- A. It uses native hypervisor management tools for management
- B. It utilizes the Storage Management Utility for management and monitoring
- C. It utilizes a unified ASIC for performance
- D. It includes deduplication and backup capabilities
- E. It provides S3 file access



Correct Answer: BD

Section: (none)

Explanation**Explanation/Reference:**

QUESTION 4 You want to deploy Recovery Manager Central to a customer environment.

How can you accomplish this? (Choose two.)

- A. Install RMC on top of the virtual or physical RHEL system using the GUI wizard
- B. Deploy an RMC virtual appliance to Microsoft Hyper-V hypervisor
- C. Deploy RMC on top of the virtual CentOS system using the CLI
- D. Deploy RMC on top of the virtual CentOS system using the GUI wizard
- E. Install RMC on the top of the virtual or physical RHEL system using the CLI
- F. Deploy an RMC virtual appliance to VMware ESXi hypervisor

Correct Answer: BF

Section: (none)

Explanation**Explanation/Reference:**

QUESTION 5 A customer uses Veeam to backup their entire datacenter.

Which Veeam feature allows them to recover a single email from their Exchange server?

- A. Changed block tracking
- B. Explorer for Storage Snapshots
- C. Data Mover Service
- D. SureBackup

Correct Answer: B

Section: (none)

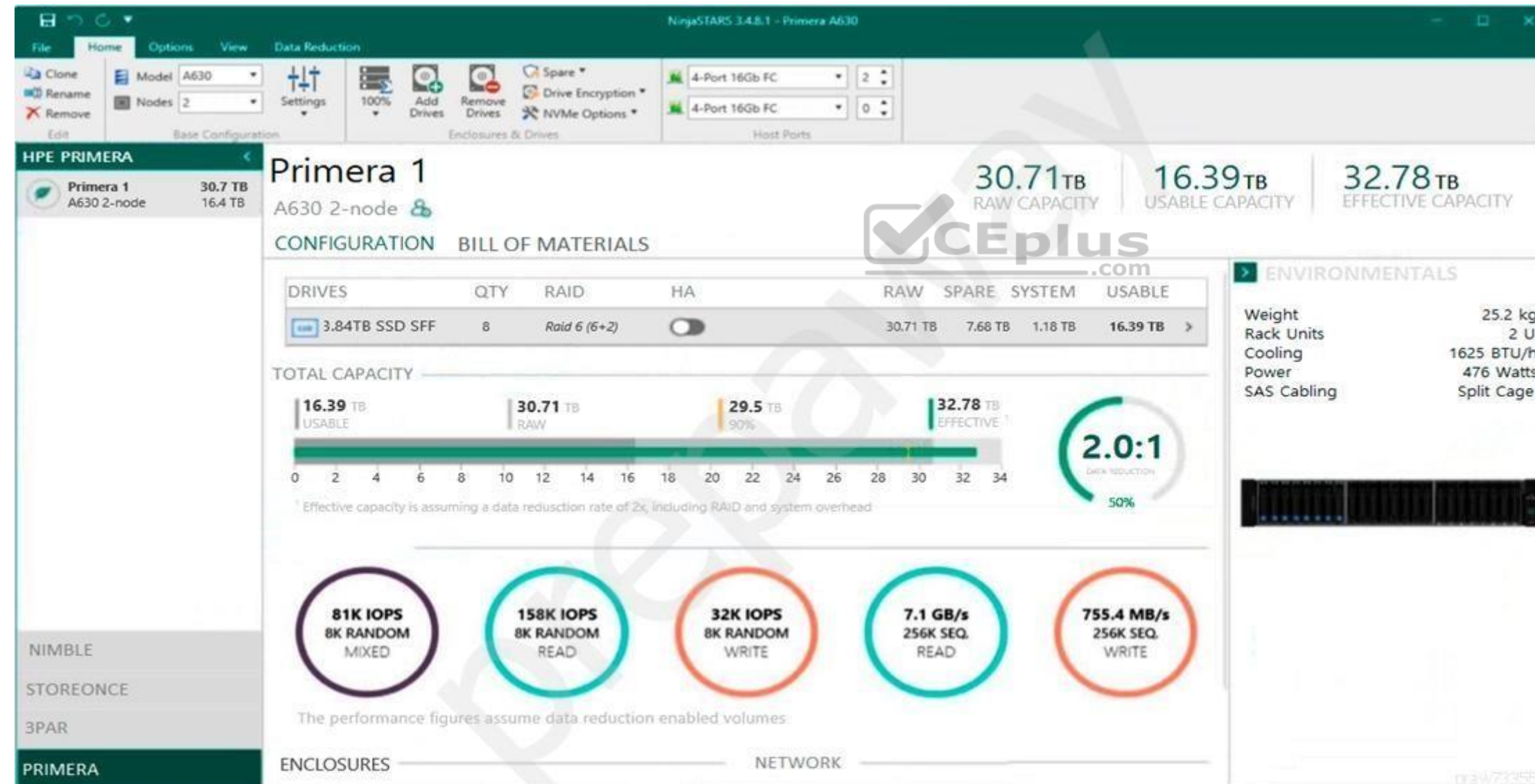
Explanation

Explanation/Reference:

Reference: http://docs.media.bitpipe.com/io_12x/io_120949/item_1077315/12%20hitchhikers_guide_veeam_backup_free_ed.pdf

QUESTION 6

Refer to the exhibit.



You are designing a new Primera solution and demonstrating performance numbers to the customer. The customer reviews the configuration and requests a change to the configuration that will increase Random Write IOPS. Which action will satisfy the customer request?

- A. Add more disks of smaller capacity
- B. Upgrade the HPE Primera base model
- C. Change to larger SSDs
- D. Add more FC Ports

Correct Answer: C

Section: (none)

Explanation

Explanation/Reference:

QUESTION 7

Which of the following are part of the SimpliVity Data Virtualization Platform architecture? (Choose two.)

- A. Presentation Layer
- B. User Management LayerC. Security Layer
- D. Data Management Layer

Correct Answer: AD

Section: (none)

Explanation

Explanation/Reference:

Reference: <https://www.hpe.com/us/en/collaterals/collateral.a00019351enw.html>

QUESTION 8 A customer is implementing a new high performance database environment.

What type of storage should you recommend?

- A. scale-out storage
- B. object store
- C. system-defined storage
- D. network-attached storage

Correct Answer: A

Section: (none)

Explanation

Explanation/Reference:

Explanation:

Scale-Out Storage at first emerged as a Network Attached Storage (NAS) solution, because customers required storage infrastructure that could sustain the colossal data flow necessity of high performance computing and unstructured data. Scale-Out NAS storage solutions can, in parallel, enhance capacity and performance by accumulation nodes working in parallel. These nodes are managed as a single system and addressed by a single name space which results in ease of implementation and management.

QUESTION 9 You are designing a new enterprise array solution. The customer is interested in a caching tier that provides extremely low-latency and persistent storage at the same time. They also need to support more than 500GB.

Which technology should you recommend?

- A. DRAM
- B. SRAM
- C. NVMe SCM
- D. NAND SSD

Correct Answer: D



Section: (none)

Explanation

Explanation/Reference:

QUESTION 10 A customer is implementing an SAP HANA environment and is looking for an alternative to an entirely in-memory database.

Which storage technology should you recommend?

- A. SAS SSD
- B. NVMe SSD
- C. NVMe SCM
- D. Intel Optane

Correct Answer: D

Section: (none)

Explanation

Explanation/Reference:

QUESTION 11

HOTSPOT

You need to create an N:M relationship between VMware hypervisors and virtual volumes with the least amount of administrative overhead.

Click the option where you can create a group of VMware hypervisors for volumes provisioning.

Hot Area:



GENERAL

Dashboard
Activity
Schedules
Settings

BLOCK PERSONA

Hosts
Host Sets
Virtual Volumes
App Volume Sets
Common Provisioning Groups
Policies

STORAGE OPTIMIZATION

Priority Optimization

DATA PROTECTION

RMC Instances

STORAGE SYSTEMS

Systems
Controller Nodes
Ports
Drive Enclosures
Physical Drives

SYSTEM REPORTER

Reports
Threshold Alerts
Advanced Analytics

SECURITY

Users
LDAP

VMWARE

Virtual Machines

Show all

HDP_datastore

SDP1

HDP_datastore.r

SDP2-Alex-Gonzalez

ME-Demo-AutoCPG

SDP1

ME-Demo-AutoCPG.r

SDP2-Alex-Gonzalez

ME-Demo.0

SDP1

ME-Demo.1

SDP1

test.1

SDP1

test.2

SDP1

test.3

SDP1

test_IFM

SDP1

test_IFM_clone

SDP1

test_k

SDP1

Compaction Type

9.4:1

Provisioning

Base

Dedup

Thin

Compression

Yes

Mode

Yes

RAID

Read/Write

Adaptive optimization

RAID 6

CPG

SSD r6

Copy CPG

SSD r6

Comments

-

Virtual Machines

0

App Volume Set

-

Performance Metrics

Average throughput in KiB/Sec

0 KiB/Sec 0

Average latency in ms

0 ms 0 ms

Copies

Clones

0

Snapshots

0

Snapshot policy

none

Remote copy group

HDP Demo Replication.r518789

Correct Answer:

Primera & 3PAR SSMC

GENERAL
Dashboard
Activity
Schedules
Settings

BLOCK PERSONA
Hosts
Host Sets
Virtual Volumes
App Volume Sets
Common Provisioning Groups
Policies

STORAGE OPTIMIZATION
Priority Optimization

DATA PROTECTION
RMC Instances

STORAGE SYSTEMS
Systems
Controller Nodes
Ports
Drive Enclosures
Physical Drives

SYSTEM REPORTER
Reports
Threshold Alerts
Advanced Analytics

SECURITY
Users
LDAP

VMWARE
Virtual Machines

Show all

HDP_datastore	SDP1	Compaction Type	9.4:1
HDP_datastore.r	SDP2-Alex-Gonzalez	Provisioning	Base
ME-Demo-AutoCPG	SDP1	Dedup	Thin
ME-Demo-AutoCPG.r	SDP2-Alex-Gonzalez	Compression	Yes
ME-Demo.0	SDP1	Mode	Yes
ME-Demo.1	SDP1	RAID	Read/Write
test.1	SDP1	Adaptive optimization	RAID 6
test.2	SDP1	CPG	SSD r6
test.3	SDP1	Copy CPG	SSD r6
test_IFM	SDP1	Comments	-
test_IFM_clone	SDP1	Virtual Machines	0
test_k	SDP1	App Volume Set	-

Performance Metrics
Average throughput in KiB/Sec: 0 KiB/Sec
Average latency in ms: 0 ms

Copies
Clones: 0
Snapshots: 0
Snapshot policy: none
Remote copy group: HDP Demo Replication.r518789

Section: (none)

Explanation

Explanation/Reference:

QUESTION 12 Which tool is used to determine current compaction ratios on Primera arrays?

- A. WebUI
- B. Storage Management Utility (SMU)
- C. NinjaStars
- D. SSMC System Reporter

Correct Answer: D

Section: (none)

Explanation

Explanation/Reference:

QUESTION 13 A customer wants to make a full copy replica of a database to use for performance testing.

Which technology should they use to create the copy?

- A. deduplication
- B. snapshot
- C. clone
- D. synthetic full

Correct Answer: B

Section: (none)

Explanation

Explanation/Reference:

QUESTION 14

A customer implemented the HPE StoreEver MSL6480 Tape Library.

Which HPE Software can the system administrator use to check the health of the library and monitor its utilization?

- A. OneView
- B. StoreServe TapeAssure Advanced
- C. StoreEver Data Verification
- D. InfoSight

Correct Answer: B

Section: (none)

Explanation

Explanation/Reference:

Reference: https://support.hpe.com/hpesc/public/docDisplay?docId=emr_na-c01121474

QUESTION 15 A customer environment includes:

- 10 DL380 Gen8 servers in a VMware Cluster
- 2 MSA storage arrays
- 2 8GB b-series fibre channel switches

The customer needs to replace their environment because it is end of life. They have limited budget. The customer is primarily concerned with management because they have limited IT staff, and they want to move away from fibre channel.

Which HPE Storage should you recommend?

- A. HPE Primera
- B. HPE XP8
- C. HPE Nimble dHCI
- D. HPE StoreOnce

Correct Answer: A

Section: (none)

Explanation

Explanation/Reference:

QUESTION 16

You are designing an HPE MSA iSCSI for a customer.



Which components are typically part of the solution? (Choose two.)

- A. Drives
- B. SFPs
- C. Service Processor
- D. All-inclusive Multi-system software
- E. Switch zones

Correct Answer: AB

Section: (none)

Explanation

Explanation/Reference:

QUESTION 17 A customer is planning to upgrade their HF40 controllers to support additional I/O requirements.

To which model can they upgrade to meet their new requirements?

- A. AF60
- B. AF40
- C. HF60
- D. HF40C

Correct Answer: D

Section: (none)

Explanation

Explanation/Reference:



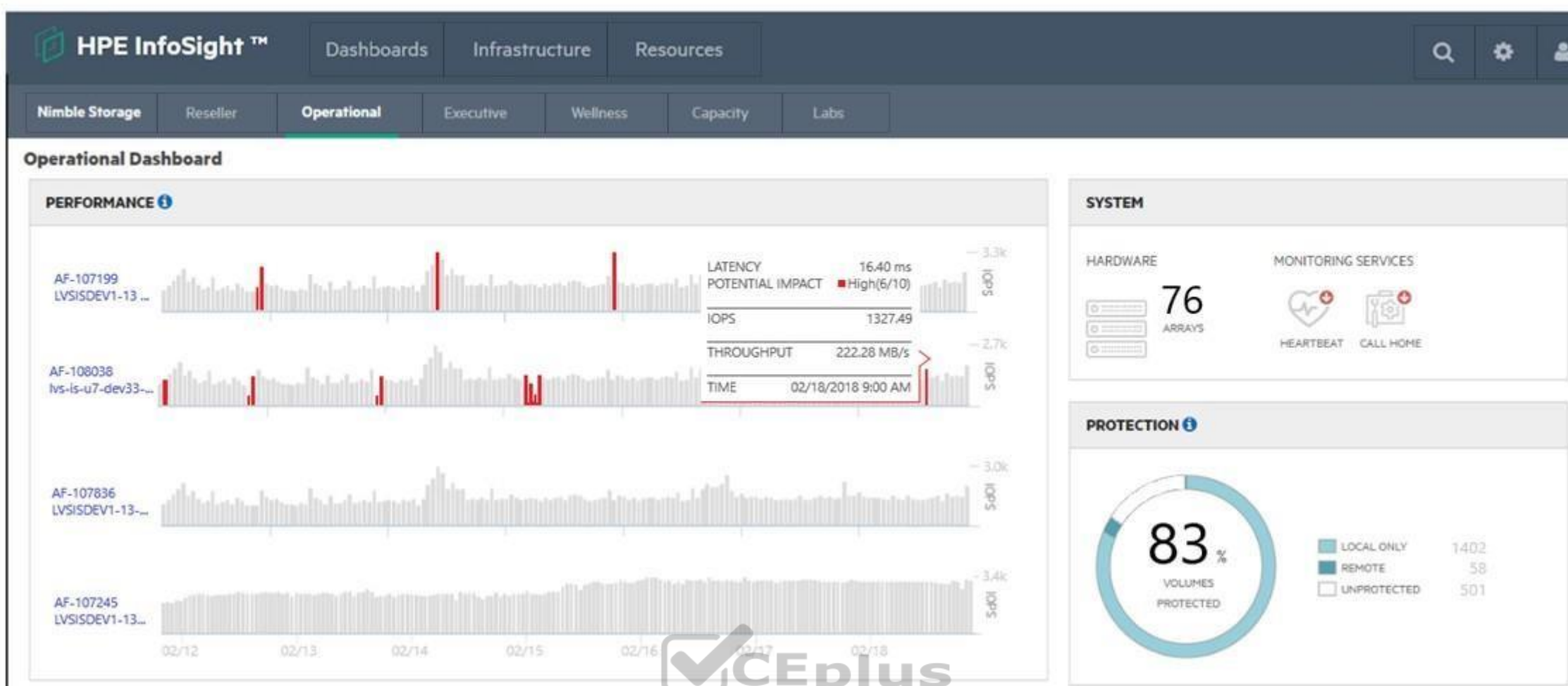
QUESTION 18

HOTSPOT

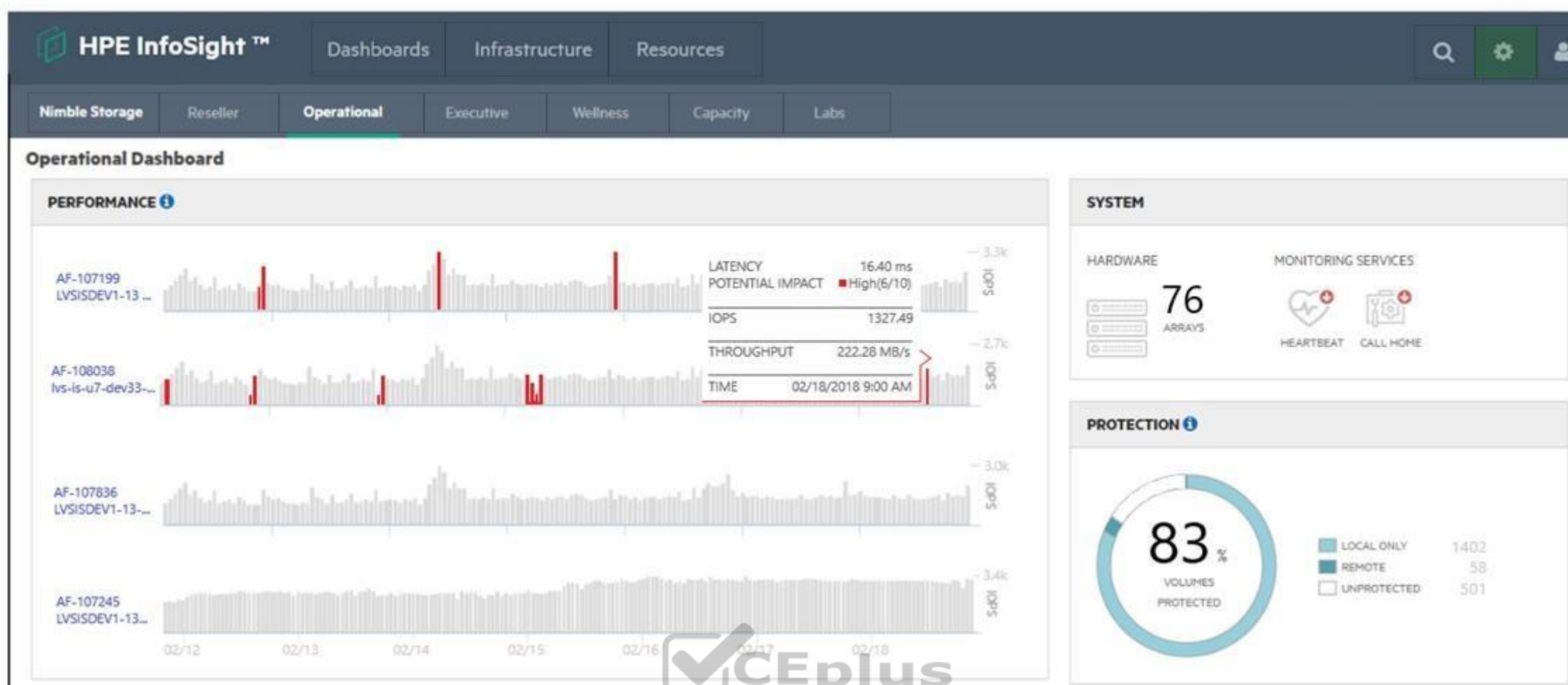
A customer has a Nimble HF40 and needs to create a support ticket.

Click the option in the InfoSight portal where the customer can perform this task.

Hot Area:



Correct Answer:



Section: (none)
Explanation

Explanation/Reference:

QUESTION 19

A customer is planning to replace their existing LTO-6 tape library with a new HPE StoreEver MSL2024 tape library. They want to reuse their existing LTO-6 tape cartridges for reads and writes.

What is the latest tape drive technology that will provide backward compatibility?

- A. LTO8
- B. LTO5C. LTO6
- D. LTO7

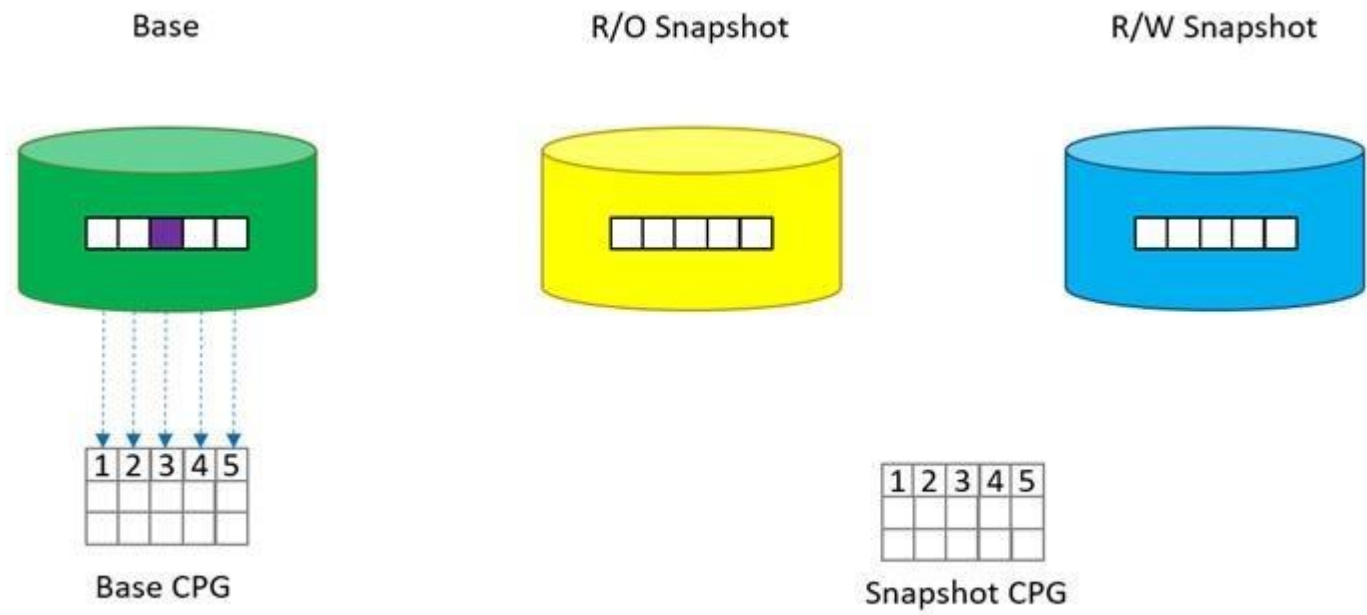
Correct Answer: D
Section: (none)
Explanation

Explanation/Reference:

QUESTION 20

DRAG DROP

Refer to the exhibit.



You create two snapshots of a thin provisioned base volume in an HPE Primera. One snapshot is read only and the other is read-write. A write occurs at the location shown in in the diagram.

Place the actions on the left into the order they are taken on the right.

Select and Place:

Action

Copy block to snapshot CPG

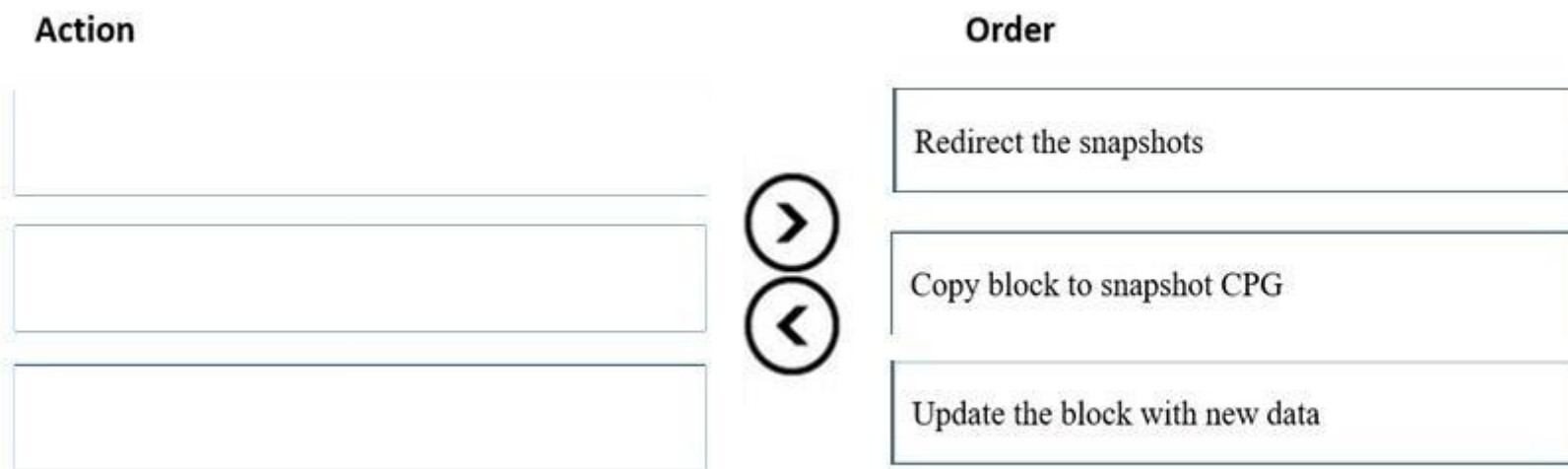
Redirect the snapshots

Update the block with new data

Order



Correct Answer:



Section: (none)

Explanation

Explanation/Reference:

QUESTION 21

A customer asks you for a recommendation on setting up their new StoreOnce appliance. They plan to use NetBackup and need the highest performance setup they can get. Their local hosts are connected via FC and the rest are connected via a WAN.

Which backup target type should you recommend?

- A. VTL
- B. S3
- C. CIFS
- D. Catalyst

Correct Answer: A

Section: (none)

Explanation

Explanation/Reference:

Reference: https://www.karma-group.ru/upload/iblock/1ff/HPE_STOREONCE_6600.pdf

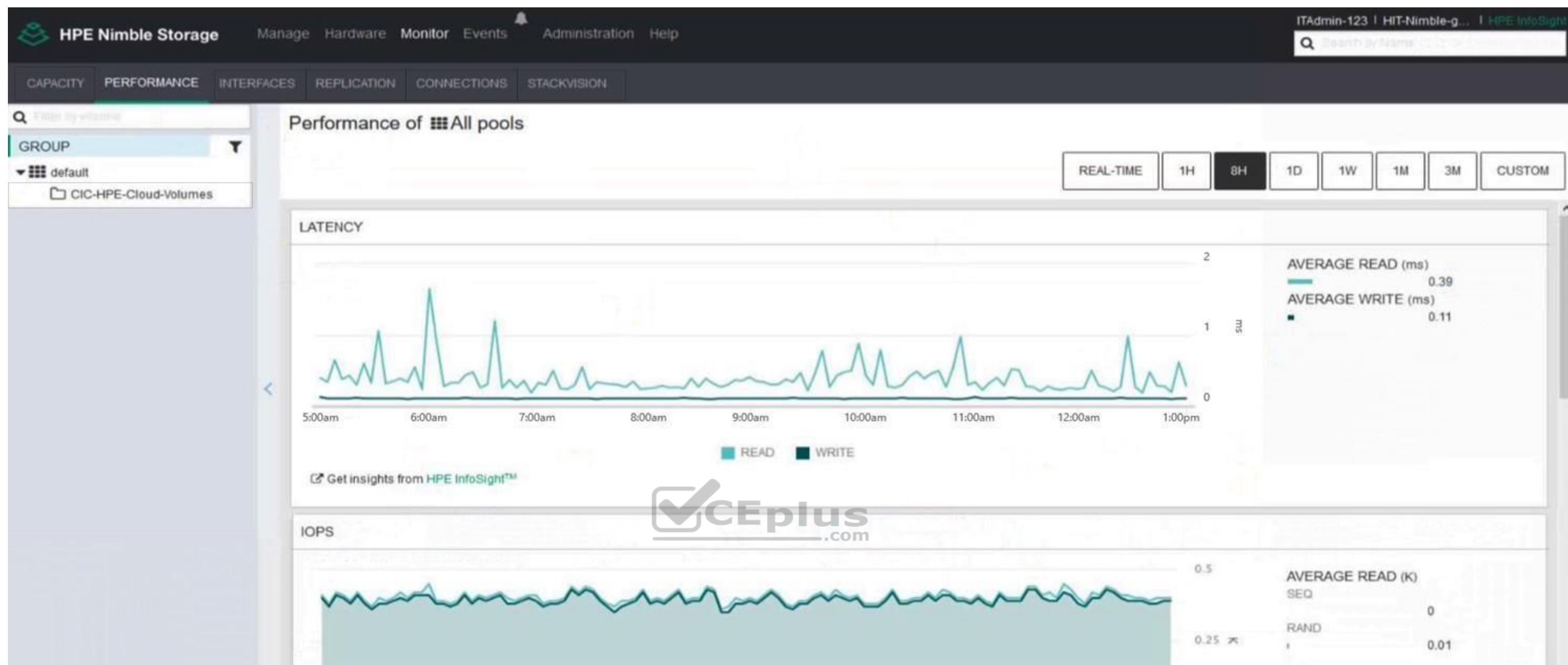
QUESTION 22

HOTSPOT

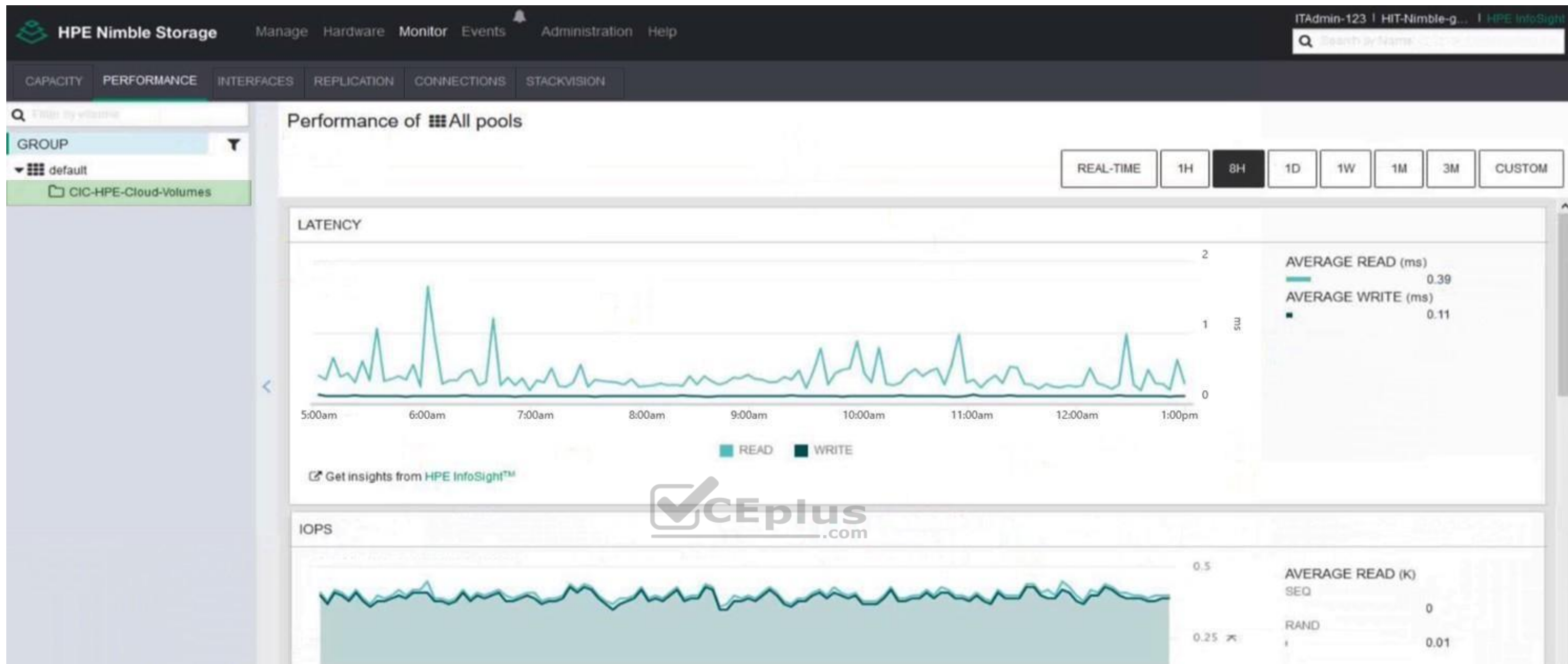
You are handing over the installed array to customer. The customer wants to review the amount of HDDs and SSDs in the system.

Click the relevant menu option where the front panel of the head shelf can be visualized.

Hot Area:



Correct Answer:



Section: (none)

Explanation

Explanation/Reference:

QUESTION 23 A customer successfully implemented an HPE Primera solution.

Which tool can be used to verify performance counters, such as IOPS, match customer requirements?

- A. NinjaCrawler
- B. OneView
- C. Recovery Manager Central
- D. Primera on-node management GUI

Correct Answer: D

Section: (none)

Explanation

Explanation/Reference:

QUESTION 24 A customer successfully implemented an HPE Primera solution.

Which tool can be used to verify achieved savings from deduplication and compression in the customer solution?

- A. NinjaSTARS
- B. 3PAR Service Processor
- C. NinjaCrawler
- D. StoreServ System Management Console

Correct Answer: D

Section: (none)

Explanation

Explanation/Reference:

QUESTION 25 A customer has the following requirements for a storage solution:

- VMware environment
- 20 TB of standard business data
- 400 TB of video archive files- 10 GB iSCSI connectivity

They are most concerned with the cost of the solution.

Which HPE storage solution offers the lowest cost while meeting the customer requirements?

- A. HPE Nimble
- B. HPE SimpliVity
- C. HPE Primera
- D. HPE MSA

Correct Answer: C

Section: (none)

Explanation

Explanation/Reference:

QUESTION 26 You are proposing a StoreOnce solution to a customer that has always used tape for a backup target.

What should you suggest to ensure that the StoreOnce deduplication is correctly sized?

- A. StoreOnce timeless storage
- B. DDAnalyzer
- C. proof of concept with StoreOnce VSA
- D. OCA

Correct Answer: B

Section: (none)

Explanation

Explanation/Reference:



QUESTION 27

A customer is purchasing an HPE MSA 2050 for a branch office. They will use it for critical data services. The customer is concerned that 64 snapshots will not be adequate as they grow.

What can be added to the array to address the customer's concerns?

- A. Advanced Data Services Suite license
- B. All-inclusive Multi-system license
- C. Virtual Copy license
- D. Adaptive Optimization license

Correct Answer: D

Section: (none)

Explanation

Explanation/Reference:

QUESTION 28

You have proposed a Primera array to a customer for new primary storage. The customer currently has an older 3PAR array that they will continue to use moving forward. The customer would like high availability configured.

Which RMC Peer Copy pre-requisites do you need to point out to the customer? (Choose two.)

- A. No license is required
- B. 2-port 10 Gb Ethernet Adapter (NIC) is required
- C. 4-port 1 Gb Ethernet Adapter (NIC) is required in each array
- D. RMC 6.2 is required
- E. Target drive type must match source drive type

Correct Answer: CD

Section: (none)

Explanation

Explanation/Reference:

QUESTION 29 Which protocol can be used for accessing StoreOnce VTL target from Veeam?

- A. FC
- B. NFSv4
- C. iSCSI
- D. SMBv3

Correct Answer: C

Section: (none)

Explanation

Explanation/Reference:

Reference: <https://domalab.com/create-hpe-storeonce-vtl/>

QUESTION 30

Which StoreOnce Gen4 features are included with the system software without additional licenses? (Choose two.)

- A. Encryption
- B. Cloud Bank
- C. Catalyst
- D. VTL/NAS replication



E. Flexible I/O HBAs

Correct Answer: CD

Section: (none)

Explanation

Explanation/Reference:

Reference: https://myenterpriselicense.hpe.com/cwp-ui/free-software/STOREONCEVSA_SYS_GEN4

QUESTION 31 You are proposing a new Nimble solution to a customer that recently experienced data loss in their existing storage array.

Which features of the Nimble array should you emphasize to your customer to address their concerns? (Choose two.)

- A. quick RAID rebuild
- B. deduplication
- C. compression
- D. encryption
- E. triple party

Correct Answer: BC

Section: (none)

Explanation

Explanation/Reference:

QUESTION 32 Which tool is used to configure an HPE MSA 2052?

- A. InfoSight
- B. SMU
- C. CMC
- D. SSMC



Correct Answer: A

Section: (none)

Explanation

Explanation/Reference:

Reference: <https://h20195.www2.hpe.com/V2/getpdf.aspx/a00008277enw.pdf>

QUESTION 33

DRAG DROP

Match the feature to the appropriate C-Series DCNM license type.

Select and Place:

Answer Area

- SAN Essentials Edition
- Advanced Edition

- Bundled at no charge with the C-series switches
- Provides configuration, real-time monitoring, and troubleshooting capabilities
- Switch/server-based license
- Historical performance monitoring for network traffic hotspot analysis

Correct Answer:

Answer Area

- SAN Essentials Edition
- Advanced Edition

SAN Essentials Edition

SAN Essentials Edition

Advanced Edition

Advanced Edition

- Bundled at no charge with the C-series switches
- Provides configuration, real-time monitoring, and troubleshooting capabilities
- Switch/server-based license
- Historical performance monitoring for network traffic hotspot analysis

Section: (none)
Explanation

Explanation/Reference:

QUESTION 34

A customer has a VMware environment running vSphere 6.5. They are running DL380 Gen10 servers with HPE 82Q adapters connected through a HPE SN3000B switch to a Nimble HF40. They plan to upgrade the hypervisor. What should they use to identify the latest firmware and compatibility information?

- A. SAN Health Diagnostics
- B. SPOCK
- C. OneView
- D. SAN Design Reference Guide

Correct Answer: B

Section: (none)

Explanation

Explanation/Reference:

Reference: <https://h20272.www2.hpe.com/spock/>

QUESTION 35

DRAG DROP

Match the MSA architecture components with their descriptions.

Select and Place:

Component

Tier

Virtual disk group

Volume group

Virtual pool

Virtual volume

Description

aggregation of disks of the same type using a specific RAID level

automatically assigned performance characteristic

collection of virtual volumes allowing group management functions

collection of virtual disk groups

logical subdivision of a virtual pool that can be mapped to a host

Correct Answer:

Component

Description

Virtual disk group	aggregation of disks of the same type using a specific RAID level
Virtual volume	automatically assigned performance characteristic
Volume group	collection of virtual volumes allowing group management functions
Virtual pool	collection of virtual disk groups
Tier	logical subdivision of a virtual pool that can be mapped to a host

Section: (none)

Explanation

Explanation/Reference:

QUESTION 36 A customer needs a centralized solution for storing departmental data to be accessed by Windows-based laptops and other personal devices.

Which solution should you recommend?

- A. Block storage, directly accessed over FC
- B. Block storage, directly accessed over SAS
- C. Object storage, accessed over S3 connector
- D. File-oriented storage, accessed over SMB

Correct Answer: B

Section: (none)

Explanation

Explanation/Reference:

QUESTION 37 You deployed and configured an all-flash Nimble array. The customer wants to attach their Windows-based server to the array.

Which HPE tool can you use on the host server to make the integration easier?

- A. StorServe Management Console
- B. Channel bonding
- C. Connection Manager
- D. Centralized Management Console

Correct Answer: C

Section: (none)

Explanation

Explanation/Reference:

Reference: https://infosight.hpe.com/InfoSight/media/cms/active/public/tmg_HPE_Nimble_Storage_Deployment_Guide_for_Microsoft_Azure_doc_version_family.pdf

QUESTION 38

A small company has recently purchased an MSA and two B-series SN3000B switches. In an effort save money, they installed the solution themselves. They call you complaining they can now see the multiple volumes on the MSA after creating just a single volume.

What should you advise them to do?

- A. Enable Smart SAN on the MSA 2052
- B. Set volume's tier affinity to Performance
- C. Enable zoning on the SN3000B switches
- D. Enable MPIO on their host

Correct Answer: D

Section: (none)

Explanation

Explanation/Reference:

QUESTION 39 A customer is deploying a new StoreOnce VSA solution.

How can the necessary storage capacity be added to the VSA? (Choose two.)

- A. Verify sufficient capacity LTUs are available
- B. Add a new virtual hard disk to the virtual machine
- C. The Cloud bank container needs to be configured once the VSA boots
- D. The Cloud bank container needs to be configured from the vCenter client



Correct Answer: BD

Section: (none)

Explanation

Explanation/Reference:

QUESTION 40

DRAG DROP

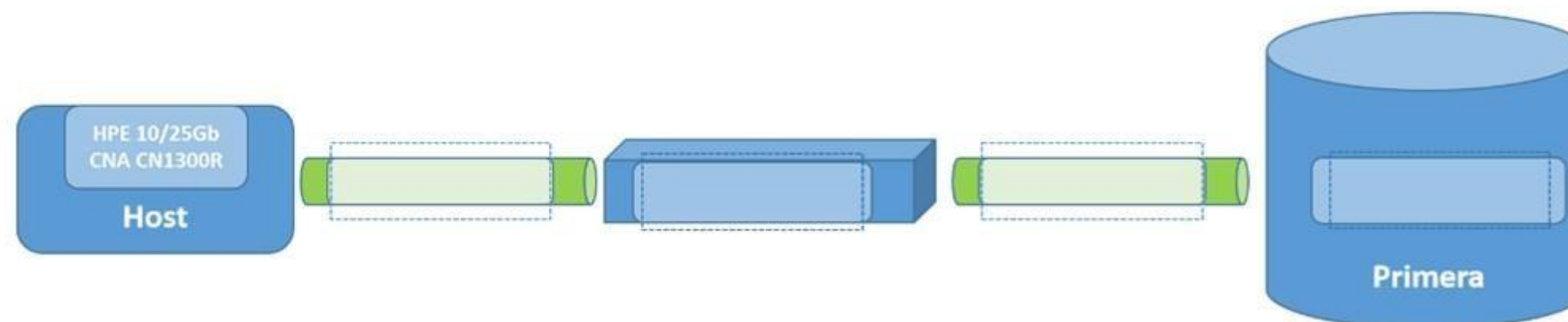
A customer wants to implement a new storage network, but wants to retain the ability to connect with legacy fiber channel-based components.

Drag the appropriate component to each box on the diagram to design a new storage network.

Select and Place:

iSCSI	FC
FCoE	4-port 32Gb FC card
4-port 10/25Gb SFP card	4-port 10Gb iSCSI card
HPE SN2700M Switch	HPE SN6650B Switch

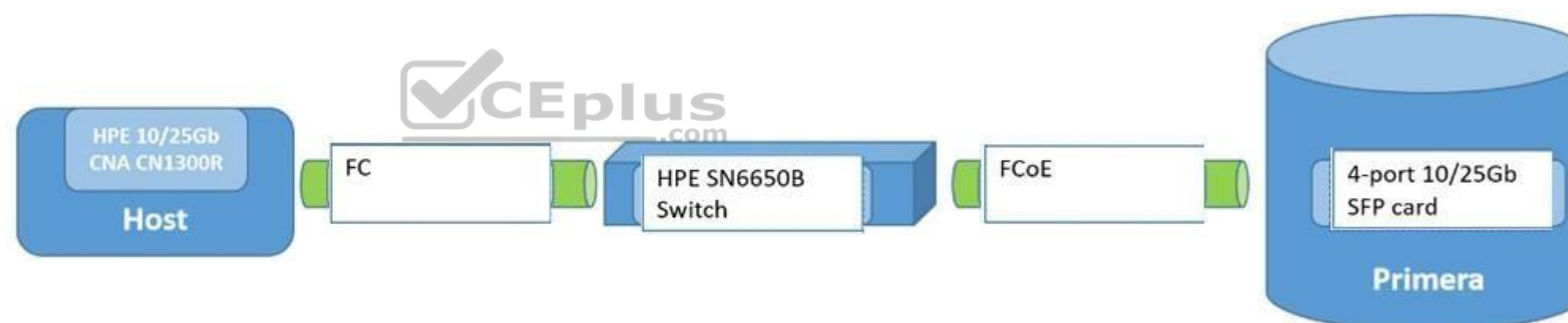
Answer Area



Correct Answer:

iSCSI	
	4-port 32Gb FC card
	4-port 10Gb iSCSI card
HPE SN2700M Switch	

Answer Area



Section: (none)

Explanation

Explanation/Reference:

QUESTION 41 A customer currently runs MSA 2040 SAS storage system with SFF drives. They are planning a hardware refresh. The customer is using virtual pools only, and is concerned about problematic data migration to the new platform.

How can the update to MSA2050 be performed?

- A. Peer migration license must be purchased for the online migration
- B. Peer migration license must be purchased for the offline migration
- C. Existing drives can be moved to the new system; both systems need to be online
- D. Existing drives can be moved to the new system; both systems need to be offline

Correct Answer: B

Section: (none)

Explanation

Explanation/Reference:

QUESTION 42

You are installing an HPE 3PAR StoreServ solution and need to integrate the array with the 3rd party monitoring application customer is using.

Which technology can be configured at 3PAR to support forwarding events from the array to the customer's monitoring application?

- A. IPMI
- B. NTP
- C. SNMPv3
- D. DMI

Correct Answer: C

Section: (none)

Explanation

Explanation/Reference:

QUESTION 43 Which actions can be done within InfoSight Cross-Stack Analytics for VMware and Hyper-V? (Choose two.)

- A. View replication policies
- B. Find noisy neighbors
- C. Locate inactive VMs
- D. Modify administrative privileges
- E. Review backup schedules



Correct Answer: BC

Section: (none)

Explanation

Explanation/Reference:

Reference: <https://community.hpe.com/t5/Around-the-Storage-Block/Cross-Stack-Analytics-for-Hyper-V-with-HPE-InfoSight-get-to-know/ba-p/7090254#.YVSyeUZBwo8>

QUESTION 44

DRAG DROP

Match each address with the associated address type.

Select and Place:

Type

Address Format

FC

20:32:00:60:69:e2:19:82

IPv6

00:1B:44:11:3A:B7

iSCSI

iqn.2000-05.com.3pardata:20210002ac00851c:15.372.28.0

MAC

fe80::85b0:5df6:1dfb:6793

Correct Answer:

Type

Address Format

MAC

20:32:00:60:69:e2:19:82

FC

00:1B:44:11:3A:B7

iSCSI

iqn.2000-05.com.3pardata:20210002ac00851c:15.372.28.0

IPv6

fe80::85b0:5df6:1dfb:6793

Section: (none)

Explanation

Explanation/Reference:

QUESTION 45

A customer purchased a StoreOnce 3620 earlier in the year and has decided to add a 10GBase-T adapter to it, which the customer sourced elsewhere and installed themselves. They complain that the new adapter is not configurable.

What is the most likely reason for this issue?

- A. The StoreOnce software requires updating
- B. Secure boot must be enabled in the BIOS to securely enable HBAs
- C. The customer failed to install a License to Use (LTU) for it
- D. The StoreOnce needs to connect to InfoSight to validate the adapter authenticity

Correct Answer: A

Section: (none)

Explanation

Explanation/Reference:

QUESTION 46 You are designing a new storage environment for a customer. They need good performance, but need to keep costs to a minimum.

They have a very limited staff, and staff is concerned about learning new technologies. You plan to recommend a Nimble HF20 solution.

Which storage connectivity components should you recommend?

- A. FlexFabric switches, Nimble iSCSI card, FC adapters for servers
- B. FC switches, Nimble FC card, FC adapters for servers
- C. Ethernet switches, Nimble iSCSI card, dedicated NICs for servers
- D. Ethernet switches, Nimble FC card, dedicated FC for servers

Correct Answer: C

Section: (none)

Explanation

Explanation/Reference:



QUESTION 47

A customer runs their core application on an aging HPE 3PAR StoreServ 20000 Storage array. The application requires 100% availability.

Which HPE storage solution should you recommend?

- A. Nimble
- B. Nimble dHCI
- C. Primera
- D. MSA

Correct Answer: C

Section: (none)

Explanation

Explanation/Reference:

QUESTION 48

You are asked to review an installation plan for a new Primera storage array. The array will go into an existing environment that has been in production for over 4 years. It includes:

- C7000s with Gen8 blades
- 8Gb Brocade switches
- a 3PAR 7400
- an MSA that is used as a backup target

What should you use to find appropriate installation and planning guides?

- A. SAF Analyze and Collector
- B. Information Library
- C. NinjaSTARS
- D. SPOCK

Correct Answer: D

Section: (none)

Explanation

Explanation/Reference:

QUESTION 49 You are designing a new HPE 3PAR StoreServ solution.

Which HPE tool allows editing the Customer Intent Document and adding specific instructions for packing?

- A. One Config Advanced
- B. SAF Collect
- C. NinjaSTARS
- D. Storage Sizing Tool

Correct Answer: A

Section: (none)

Explanation

Explanation/Reference:

QUESTION 50

Refer to the exhibit.



Primera 1

C650 2-node

69.08TB
RAW CAPACITY

50.81TB
USABLE CAPACITY

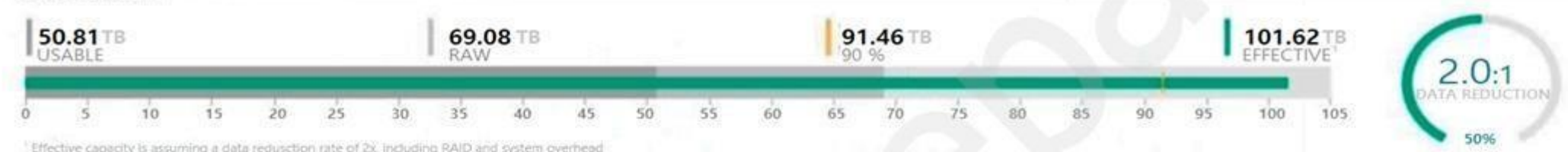
101.62 TB
EFFECTIVE CAPACITY

CONFIGURATION

BILL OF MATERIALS

DRIVES	QTY	RAID	HA	RAW	SPARE	SYSTEM	USABLE
1.92TB SSD SFF	36	Raid 6(10+2)	<input checked="" type="checkbox"/>	69.08 TB	6.91 TB	1.2 TB	50.81TB
WORKLOADS	IO SIZE	READ	DATA REDUCTION	HOST PORTS	ESTIMATED PERFORMANCE ¹		
Random	32K	50 %	Yes	8	57,330 IOPS, 1.5 ms		

TOTAL CAPACITY



PERFORMANCE

134K IOPS
8K RANDOM
MIXED

288K IOPS
8K RANDOM
READ

55K IOPS
8K RANDOM
WRITE

11.2 GB/s
256K SEQ
READ

1.5 GB/s
256K SEQ
WRITE

The performance figures assume data reduction enabled volumes

ENVIRONMENTALS

Weight
Pack Units
Cooling
Power
SAS Cabling

139.7 kg
12 U
4757 BTU/h
1,394 Watts
Direct Connect/Daisy Chain



A customer purchased a Primera C650 array to replace several older 3PAR arrays. They plan to upgrade the system as each 3PAR reaches the end of its lease. The initial sizing included 100TB effective capacity for an Oracle database environment.

The first 3PAR to come off lease has 100TB of VDI boot images that support thousands of users.

Which addition to the Primera should you recommend? A.

DRIVES	QTY	RAID	HA	RAW	SPARE	SYSTEM	USABLE
1.92TB SSD SFF	36	Raid 6 (10+2)	<input checked="" type="checkbox"/>	69.08 TB	6.91 TB	1.2 TB	50.81 TB
14TB NL LFF	12	Raid 6 (10+2)	<input checked="" type="checkbox"/>	164.57 TB	27.43 TB	-	114.28 TB
WORKLOADS	IO SIZE	READ	DATA REDUCTION	HOST PORTS	ESTIMATED PERFORMANCE ¹		
Random	8K	70 %	No	8	1,041 IOPS, 28.9 ms		

DRIVES	QTY	RAID	HA	RAW	SPARE	SYSTEM	USABLE
1.92TB SSD SFF	36	Raid 6 (10+2)	<input checked="" type="checkbox"/>	69.08 TB	6.91 TB	-	57.81 TB >
2.4TB 10K SFF	60	Raid 6 (10+2)	<input checked="" type="checkbox"/>	143.15 TB	7.16 TB	1.2 TB	112.33 TB v
WORKLOADS	IO SIZE	READ	DATA REDUCTION	HOST PORTS	ESTIMATED PERFORMANCE		
Random	8K	70 %	No	8	8,158 IOPS, 29.5 ms >		

B.

C.

DRIVES	QTY	RAID	HA	RAW	SPARE	SYSTEM	USABLE
1.92TB SSD SFF	36	Raid 6 (10+2)	<input checked="" type="checkbox"/>	69.08 TB	6.91 TB	1.2 TB	50.81 TB >
2.4TB 10K SFF	36	Raid 6 (10+2)	<input checked="" type="checkbox"/>	85.89 TB	4.77 TB	-	68.6 TB v
WORKLOADS	IO SIZE	READ	DATA REDUCTION	HOST PORTS	ESTIMATED PERFORMANCE		
Random	8K	70 %	No	8	4.815 IOPS, 29,3 ms >		

DRIVES	QTY	RAID	HA	RAW	SPARE	SYSTEM	USABLE
1.92TB SSD SFF	36	Raid 6 (10+2)	<input checked="" type="checkbox"/>	69.08 TB	11.05 TB	1.2 TB	47.36 TB >
15.36TB SSD SFF	8	Raid 6 (6+2)	<input checked="" type="checkbox"/>	122.84 TB	19.66 TB	-	77.39 TB v
WORKLOADS	IO SIZE	READ	DATA REDUCTION	HOST PORTS	ESTIMATED PERFORMANCE		
Random	8K	70 %	Yes	8	78,423 IOPS, 0.4 ms >		

D.

Correct Answer: B

Section: (none)

Explanation

Explanation/Reference:

QUESTION 51

HOTSPOT

You are configuring a new HPE 3PAR solution and need to create a new disk group with a defined RAID level.

Click the appropriate option where the RAID can be selected.

Hot Area:

GENERAL
Dashboard
Activity
Schedules
Settings

BLOCK PERSONA
Hosts
Host Sets
Virtual Volumes
App Volume Sets
Common Provisioning Groups
Policies

STORAGE OPTIMIZATION
Priority Optimization

DATA PROTECTION
RMC Instances

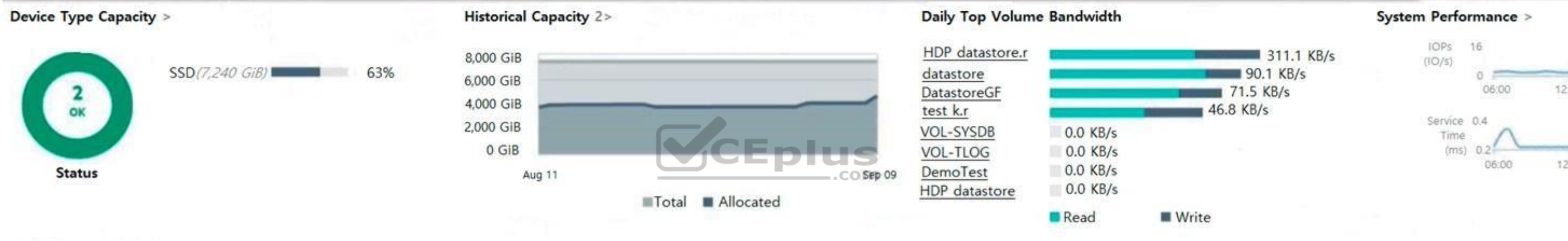
STORAGE SYSTEMS
Systems
Controller Nodes
Ports
Drive Enclosures
Physical Drives

SYSTEM REPORTER
Reports
Threshold Alerts
Advanced Analytics

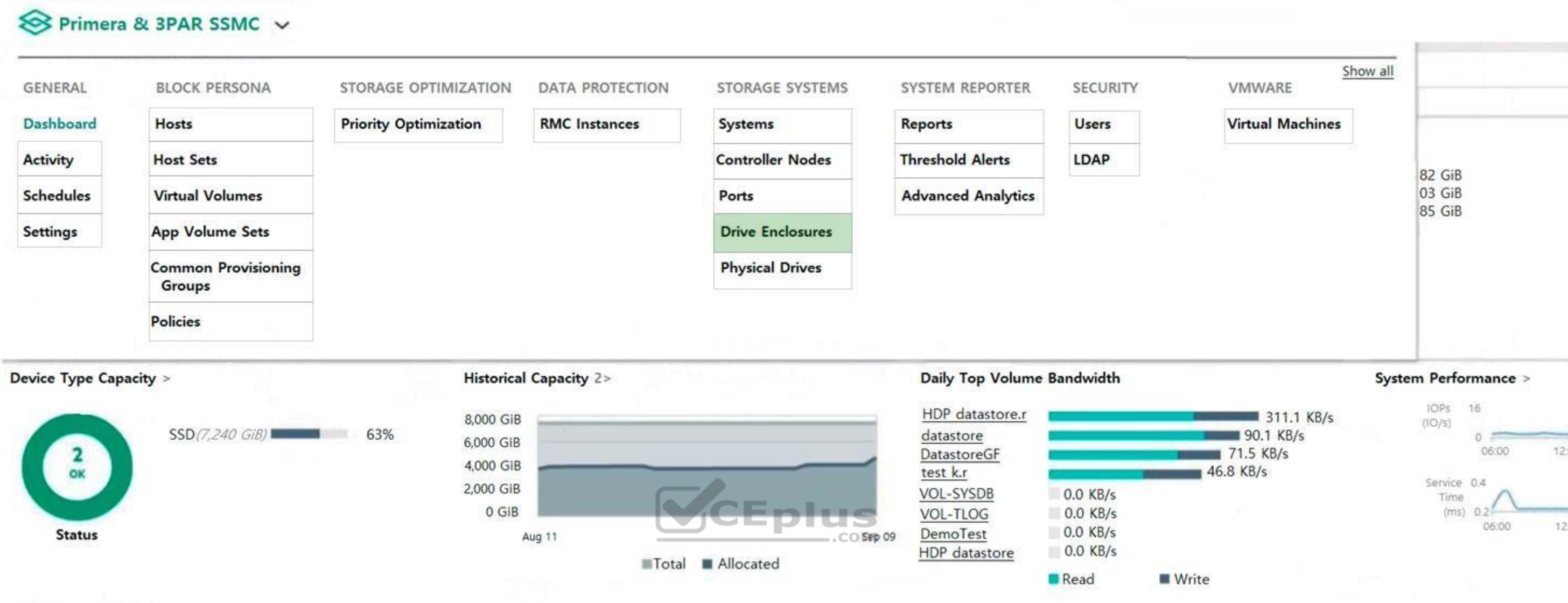
SECURITY
Users
LDAP

VMWARE
Virtual Machines

Show all



Correct Answer:



Section: (none)
Explanation

Explanation/Reference:

QUESTION 52 Which feature allows HPE Primera, HPE Nimble, and HPE XP arrays to work with third-party management tools?

- A. REST API
- B. Data Protection Manager (DPM)
- C. StoreServe Management Console (SSMC)
- D. Service Processor

Correct Answer: A
Section: (none)
Explanation

Explanation/Reference:

QUESTION 53
DRAG DROP

Select the correct initiation option for each HPE Primera function.

Select and Place:

User Initiated

Autonomic

Answer Area

Stripe data across drives

Create Virtual Volumes

Create Common Provisioning Groups

Create RAID-6 Virtual Volumes

Optional Performance Management

Export LUNs

Correct Answer:

User Initiated

Autonomic

Answer Area

Autonomic

Stripe data across drives

User Initiated

Create Virtual Volumes

User Initiated

Create Common Provisioning Groups

User Initiated

Create RAID-6 Virtual Volumes

Autonomic

Optional Performance Management

User Initiated

Export LUNs



Section: (none)

Explanation

Explanation/Reference:

QUESTION 54

What is the purpose of WWN in FC SAN? (Choose two.)

- A. Identification of zone members
- B. Identification of entities denied access to a volume
- C. Identification of entities via Storage Name Server (SNS)
- D. Load balanced frame delivery
- E. Forward translation of DNS entries

Correct Answer: CE

Section: (none)

Explanation

Explanation/Reference:

QUESTION 55

You have proposed a Primera array to a customer for primary storage. The customer currently has an older HPE 3PAR array and will continue to use it moving forward. The customer would like high availability configured.

Which RMC Peer Copy pre-requisites do you need to point out to the customer? (Choose two.)

- A. 4-port 1 Gb Ethernet Adapter (NIC) is required in each array

- B. Target drive type must match source drive type
- C. 2-port 10 Gb Ethernet Adapter (NIC) is required in each array
- D. Check that the 3PAR OS version is supported
- E. Required license must be provided
- F. RMC 6.2

Correct Answer: AE

Section: (none)

Explanation

Explanation/Reference:

QUESTION 56 Which tool is used to provide centralized management of 3PAR and Primera arrays?

- A. SMU
- B. Primera UI
- C. WebUI
- D. SSMC

Correct Answer: D

Section: (none)

Explanation

Explanation/Reference:

Reference: <https://myenterpriselicense.hpe.com/cwp-ui/free-software/QR482-63591>

QUESTION 57 You need to deploy a Recovery Manager Central appliance and integrate it with a customer's 3PAR system.

Which information must be collected from the customer in order to proceed with the installer? (Choose two.)

- A. StoreOnce store name
- B. vCenter IP address or hostname
- C. HPE 3PAR used capacity
- D. IP address of the RMC
- E. NFS path

Correct Answer: CD

Section: (none)

Explanation

Explanation/Reference:

QUESTION 58

DRAG DROP

Match each HPE storage solution to its use case.

Select and Place:

Solution

Primera

MSA

Nimble

Nimble dHCI

SimpliVity

Use Case

Smaller site traditional deployments

Complete solution for virtualized environments

Enterprise class storage for SMB

Enterprise class storage with Tier-0 features

hyperconverged control with independent compute and storage scalability

Correct Answer:

Solution

Nimble

Nimble dHCI

MSA

Primera

SimpliVity

Use Case

Smaller site traditional deployments

Complete solution for virtualized environments

Enterprise class storage for SMB

Enterprise class storage with Tier-0 features

hyperconverged control with independent compute and storage scalability

Section: (none)

Explanation

Explanation/Reference:

QUESTION 59 What is the typical protocol used to access data from object storage?

A. FC

- B. NVMe
- C. HTTPD. iSCSI

Correct Answer: A

Section: (none)

Explanation

Explanation/Reference:

Reference: <https://www.enterprisestorageforum.com/hardware/block-storage-vs-object-storage/>

