



Exam Code: HPE0-S59

Exam Name: HPE Compute Solutions

Website: <https://VCEup.com/>

Team-Support: <https://VCEplus.io/>



Question No: 1

A logical interconnect group can span on multiple HPE Synergy frames for which interconnect type?

- A. Brocade 32GB Fibre Channel Switch Module for HPE Synergy
- B. HPE virtual Connect SE 32 Gb FC Module for Synergy
- C. HPE Virtual Connect SE 100 Gb F32 Module tor Synergy
- D. HPE Synergy 12 Gb SAS Connection Module

Answer: C

Explanation:

Question No: 2

Which HPE Virtual Connect feature allows an administrator to suppress excessive inbound multicast broadcast and destination lookup failure (OLF) packets?

- A. Pause flood protection
- B. Loop protection
- C. LLDP tagging
- D. Storm control

Answer: D

Explanation:

Question No: 3

Which statement about a new HPE SimpliVity deployment is true?

- A. New HPE SimpliVity deployments give customer flexible choice of hypervisor
- B. All new HPE SimpliVity models are based on AMD CPUs
- C. All new HPE SimpliVity models support deduplication and compression
- D. New HPE SimpliVity deployments are licensed per node not per physical socket

Answer: C

Explanation:

Question No: 4

You configured a vVol datastore using HPE Storage integration Pack for VMware vCenter.

Which storage object should you check using SSMC to verify whether vVol datastore is configured property?

- A. App Volume Set
- B. Storage Container
- C. Virtual Volume Set
- D. virtual Volume



Answer: C

Explanation:

Question No: 5

Which statement about login redistribution is true?

- A. Login redistribution is available only if HPE Primera or HPE Alletra is connected directly to the HPE Synergy frame
- B. Login redistribution is a licensed feature and the number of licenses required depends on the number of active ports
- C. Login redistribution is supported only on the HPE Synergy Virtual Connect SE 32Gb FC Modules
- D. Login redistribution is used for login balancing when they are not distributed evenly over the FC links

Answer: C

Explanation:

Question No: 6

Which statement about an HPE Oneview support dump is true?

- A. Appliance support dump by default contains a logical enclosure support dump
- B. Support dump is a binary file that can be opened only in a dedicated application
- C. Support dump can be created if HPE Virtual Connect modules are installed in the frame
- D. Preview support dump is available only when creating an appliance support dump

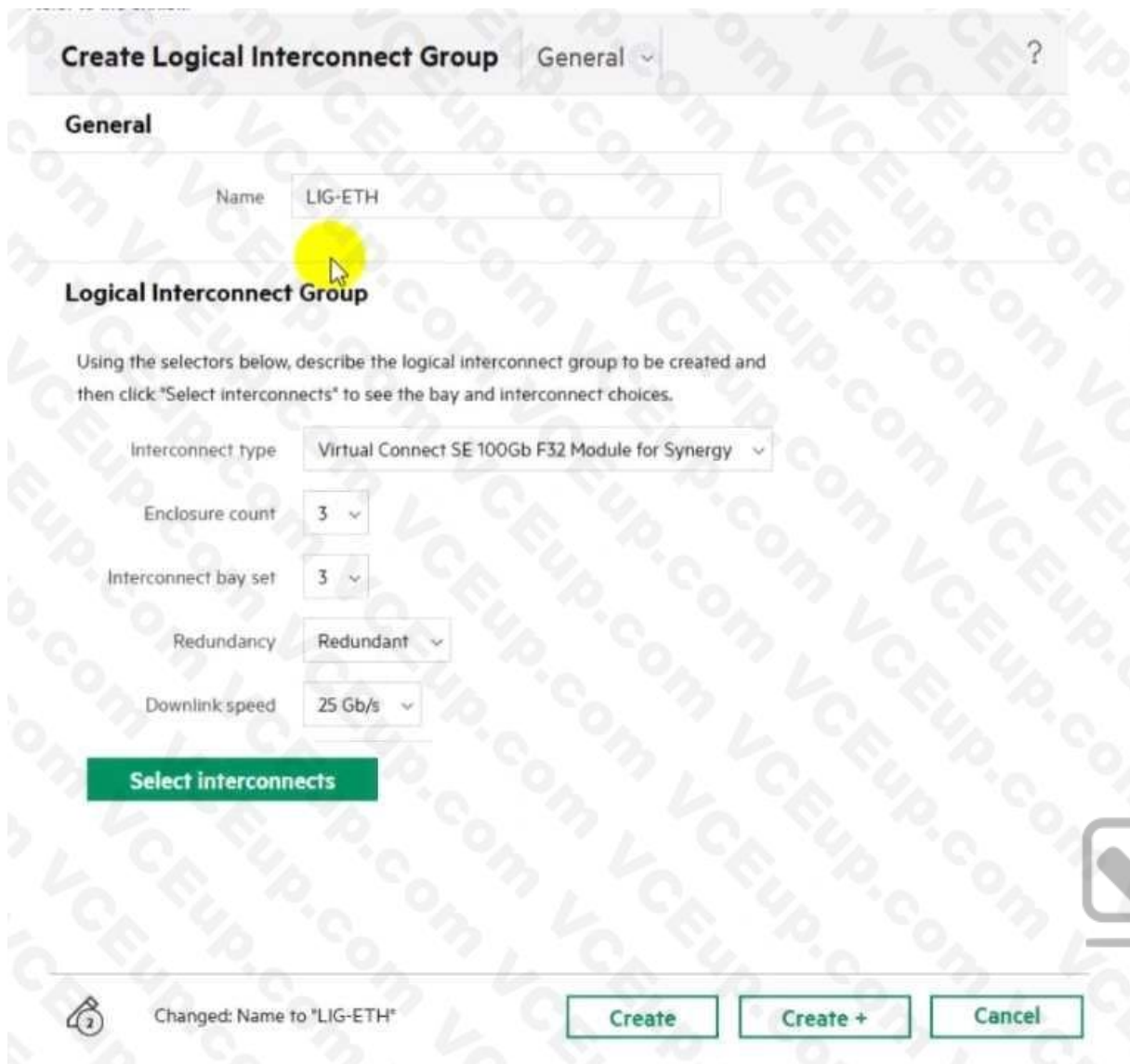
Answer: B

Explanation:

Question No: 7

Refer to the exhibit.






Which statement about this logical interconnect group is true?

- A. The master modules are located in the interconnect bays 2 and 5
- B. For the given downlink speed, the maximum number of frames is reached
- C. Both master modules are located in the same HPE Synergy frame
- D. To use interconnect bay set 3, all compute nodes must be half-height

Answer: C

Explanation:

Question No: 8

An administrator tries to open iLO interlace from HPE OneView Instead of being automatically logged in a login prompt displays Where should you start the troubleshooting process?

- A. At the iLO interface to verify whether the ILO Advanced license is properly applied
- B. At HPE OneView Interface to verify whether the server is In the maintenance mode
- C. At the iLO interface to verify whether the SSO certificate is removed from an iLO.

D. At HPE OneView Interface to verify whether the iLO processor is disabled

Answer: A

Explanation:

Question No: 9

Your customer plans to deploy a VMware ESXi with HPE Synergy platform. They also plan a vSAN deployment leveraging HPE D3940 Storage Modules and SSD drives. The customer requested the following components:

- HPE Synergy frame with ten HPE Synergy 480 Gen10 Plus compute modules
 - Two HPE Virtual Connect SE 100Gb F32 Modules for Synergy
 - An appropriate number of vSAN Standard licenses for each compute node
 - One HPE D3940 Storage Module with 40 SSDs - All required cables and options
- Which statement about this request is true?

- A. vSphere licenses should be added, as vSAN licenses do not replace vSphere licenses
- B. vSphere Standard licenses should be replaced with Enterprise Plus licenses to enable vSAN
- C. One HPE Virtual Connect SE 100Gb F32 Module for Synergy should be replaced with 50GD/S ILM
- D. 20 SSD drives should be removed from this setup, as D3940 supports only 20 SSD or SAS drives.

Answer: B

Explanation:

Question No: 10

Your customer plans to deploy a VMware ESXi with HPE Synergy platform. They plan to use Distributed Switches and DRS cluster. You are preparing a proposal with the following components:

- HPE Synergy frame with ten HPE Synergy 480 Gen10 Plus compute modules
 - two HPE Virtual Connect SE 100Gb F32 Modules for Synergy
 - an appropriate number of the vSphere Standard licenses for each compute node
 - one HPE D3940 Storage Modules with 40 SSDs - all required cables and options
- Which statement about this proposal is true?

- A. One HPE Virtual Connect SE 100Gb F32 Module for Synergy should be replaced with 50GD/S ILM
- B. vSphere Standard licenses should be replaced with Enterprise Plus licenses to enable requested features
- C. 2 additional HPE Synergy 480 Gen10 Plus compute modules can be added to this setup
- D. 20 SSD drives should be removed from this setup, as D3940 supports only 20 SSD or SAS drive.

Answer: B

Explanation:

Question No: 11

Your customer has the following HPE Synergy setup

- 3 HPE Synergy 12000 Frames
- 4 HPE Virtual Connect SE 100 Gb F32 Modules

- 2 HPE Synergy 50 GO Interconnect Link Modules
- 36 HPE Synergy 480 Gen10 Plus compute modules
- 2 HPE Composer 2 modules

Which statement about this setup is true?

- A. To use all compute nodes, the customer must create at least two logical enclosures
- B. To manage all frames, the customer must buy two additional HPE Composer 2 modules
- C. The customer must buy 36 HPE OneView Advanced licenses to manage compute modules
- D. The customer can add one D3940 storage Module to each of the frames

Answer: C

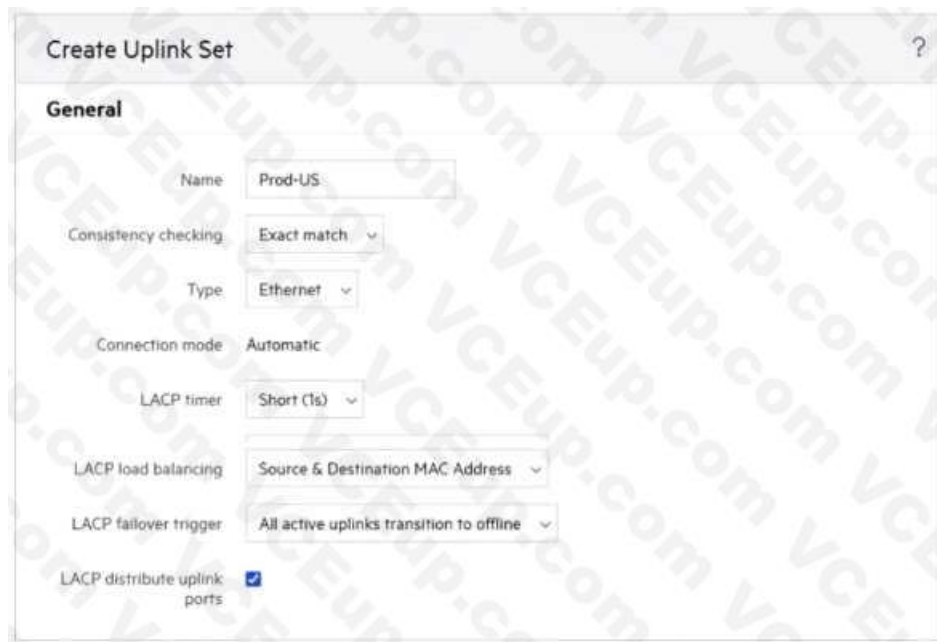
Explanation:

Question No: 12

HOTSPOT

An HPE Synergy customer needs to prevent a timeout and loss of communication during an external switch firmware upgrade.

Click the parameter that the customer should configure within an uplink set to meet this requirement



Answer:

Explanation:



Question No: 13

Which statement about HPE Superdome Flex 280 is true?

- A. It supports 2 to 8 sockets in 2-socket increments.
- B. It cannot be managed using HPE OneView.
- C. It must be equipped with at least 768 GB of memory.
- D. It can support up to two nPars with an external RMC.

Answer: C

Explanation:

Question No: 14

You are troubleshooting an HPE OneView server profile that presents a critical state. The server profile was configured with a Link Aggregation Group What should you check to fix the issue?

- A. if both FiexNICs are configured with the same speed
- B. If the logical enclosure is built on at least three HPE Synergy frames
- C. if both FiexNICs are connected to different networks
- D. if the logical enclosure is configured with redundant master modules

Answer: A

Explanation:

Question No: 15

Your customer experienced some problems caused by outdated HPE Superdome Flex firmware.

Which update method should they use to avoid these issues in the future?

- A. HPE OneView method for I/O firmware update procedure
- B. RMC CLI to update I/O and HPE Persistent Memory firmware



C. HPE OneView IT HPE Persistent Memory firmware must be updated.

D. HPE SUM if HPE Persistent Memory firmware must be updated

Answer: B

Explanation:

Question No: 16

Your customer needs to move an application from an HPE Synergy 480 Gen10 Compute Module to an HPE Synergy 660 Gen 10 Compute Module. The 480 has a switch that has been manually zoned outside of HPE OneView.

What must the customer do before migrating the application?

A. Migrate the application to a Logical JBOD and connect it to the new server

B. Copy the server profile and assign the clone to the new hardware

C. Edit the server profile and change server hardware type

D. Create a new server profile template and apply to the new hardware

Answer: C

Explanation:

Question No: 17

Your customer has the following HPE Synergy setup

- Three frames fully populated with HPE Synergy 480 Gen10 Plus modules and 25Gb/s downlink speed formulating a single logical enclosure

- Two HPE Virtual Connect SE 100Gb F32 Module for Synergy

- Four HPE Synergy 50Gb interconnect Link Module

- Six HPE Synergy Virtual Connect SE 32Gb FC Modules

The customer needs to add a frame.

Which statement about the expansion of this setup is true?

A. The additional frame must have HPE Virtual Connect FC modules installed

B. The customer can grow the existing logical enclosure up to 5 frames

C. The customer has to create a new logical enclosure for the additional frame

D. The additional frame cannot have 12Gb SAS connection modules installed

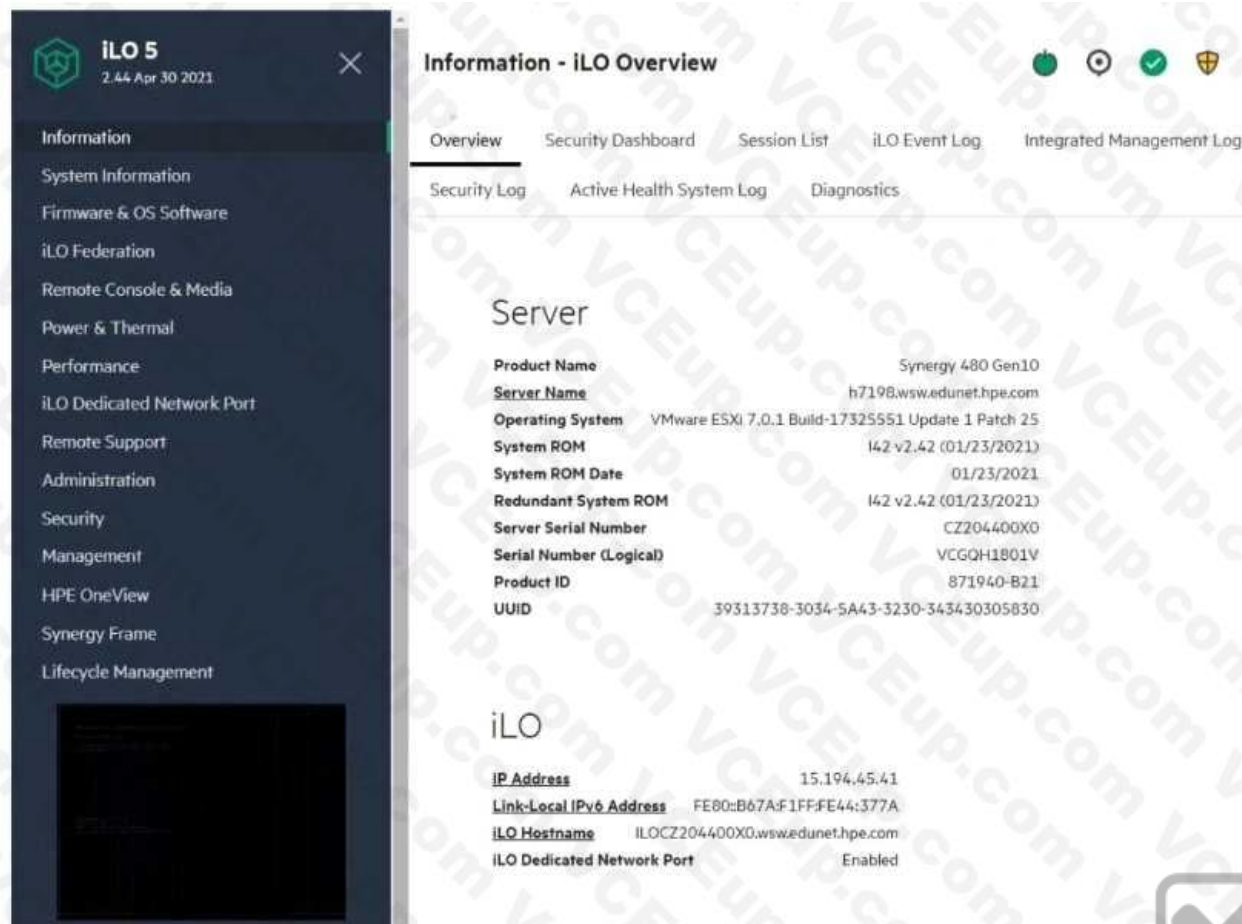
Answer: C

Explanation:

Question No: 18

HOTSPOT

Click the area within the iLO management interface that will allow you to access workload Advisor.



Answer:

Explanation:



Question No: 19

Your customer plans to deploy HPE OneView for VMware vCenter Server together with HPE Storage Integration Pack for VMware vCenter. The customer wants to use them to manage HPE Synergy Gen10 compute modules. HPE ProLiant Gen 10 servers and an MSA array.

Which statement about compatibility of the existing environment with the planned software components is true?

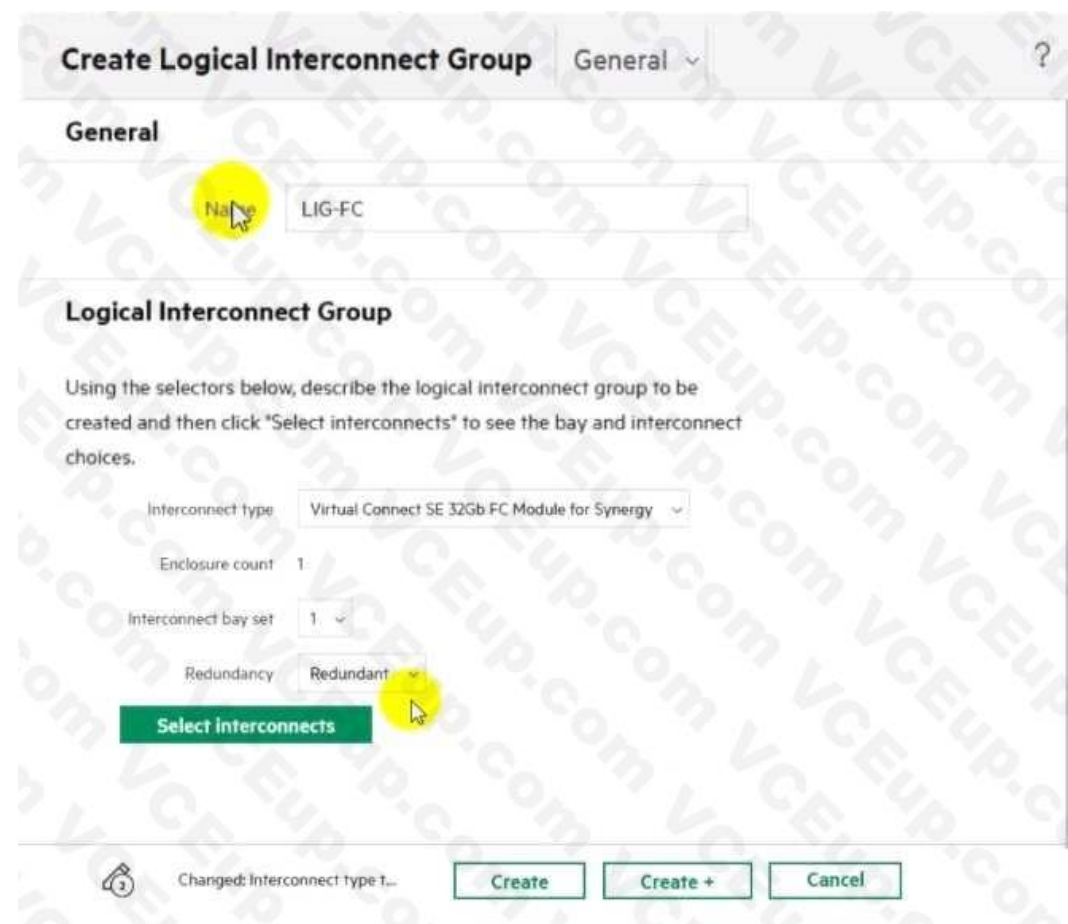
- A. Both HPE Synergy Gen10 full-height compute module plugins will require a license
- B. HPE OneView for VMware vCenter Server does not support standalone HPE ProLiant servers
- C. To use the required plugins HPE ProLiant Gen10 systems must be managed using HPE OneView
- D. HPE Storage integration Pack for VMware vCenter does not support MSA arrays

Answer: B

Explanation:

Question No: 20

Refer to the exhibit.




Which statement about this logical interconnect group is true?

- A. Both modules are located in different frames for redundancy
- B. For an uplink set, ports from different modules can be selected
- C. interconnect modules are installed in interconnect bays 1 and 4
- D. An additional license is required to change the enclosure count

Answer: D

Explanation:

Question No: 21

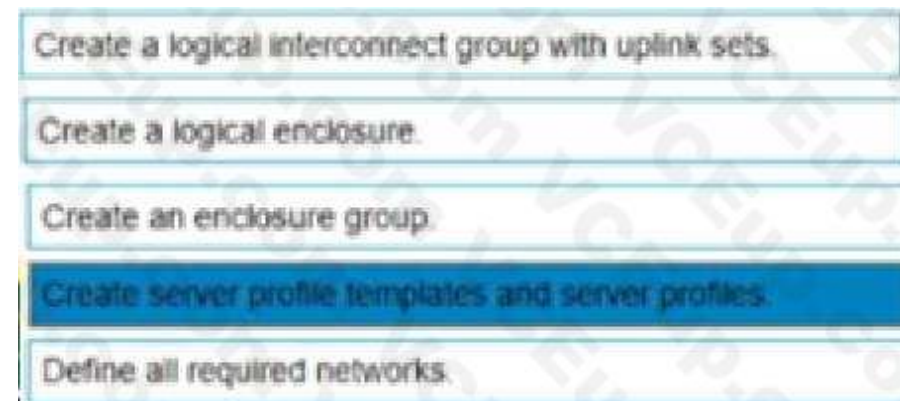
DRAG DROP

You need to setup HPE Synergy frames after hardware components are discovered within HPE OneView.

Put the steps to achieve this goal into the coned order in the answer area on the right.



Answer:



Explanation:

Question No: 22

Your customer plans to add four HPE Synergy frames to an existing management ring Ail installed frames are equipped with two 2-port FLM modules, while new frames will be equipped with 4-port FLM modules.

Which statement about mixing different FLM modules is true?

- A. Existing 2-port FLM modules must be replaced with 4-port FLM modules
- B. A management ring can contain mixed frame link module configurations
- C. A management ring with mixed FLM modules cannot have more than 12 frames
- D. Mixing different FLM modules is allowed if all of them have the same firmware version

Answer: C

Explanation:

Question No: 23

You plan to configure a Link Aggregation Group (LAG) for two connections within a server profile for a compute node running an ESXI system.

What is required from the VMware side to enable LAG?

- A. Virtual Distributed Switch
- B. vSphere Standard license
- C. Load balancing cluster
- D. Dedicated VMKernel port

Answer: D

Explanation:

Question No: 24

Which statement about HPE OneView milestone releases is true?

- A. A milestone release is a release which must be installed on HPE Composer to support current version of the Service Pack for Synergy
- B. A milestone release is a release that is published when HPE releases new hardware components to immediately support new systems
- C. A milestone release is available for selected partners that give access to HPE OneView features which are not officially announced.
- D. A milestone release is a release with an enhanced update architecture that is a prerequisite prior to updating to a subsequent release.

Answer: A

Explanation:

Question No: 25

Your customer has an HPE Synergy frame equipped with a D3940 Storage Module. Each of the compute nodes has an appropriate storage controller installed and two 12Gb SAS switches installed in the first fabric.

The customer reports that compute nodes cannot access the storage module. What should you verify first when troubleshooting this problem?

- A. If the D3940 module is imported in managed state that allows volume provisioning.
- B. If there is a logical interconnect created based on the 12Gb SAS switches.
- C. If the D3940 storage module is properly licensed through HPE OneView interface.
- D. If there is at least one iSCSI network configured that will provide access to the module.

Answer: A

Explanation:

Question No: 26

Your customer wants to add dedicated Fibre Channel connectivity to the HPE Synergy frame running HPE Synergy 480 Gen10 compute modules, each with one CPU socket populated. Currently they use two 12 Gb SAS switches and two HPE Virtual Connect SE 100Gb F32 Modules for HPE Synergy installed in third fabric.

What must be done to enable dedicated FC connectivity for this HPE Synergy frame?

- A. A second CPU must be installed for all HPE Synergy 480 Gen10 compute nodes.
- B. For Brocade switches, a logical interconnect group must be created in HPE OneView.

- C. For VC-FC modules, all of server facing ports must be properly licensed.
- D. SAS switches must be moved to second fabric and FC modules Installed in the first one.

Answer: D

Explanation:

Question No: 27

Your customer plans to deploy ESXi systems to HPE Synergy and HPE ProLiant servers using HPE OneView for VMware vCenter Server.

Which statement about HPE OneView for VMware vCenter Server functionality is true for this environment?

- A. HPE ProLiant servers need an HPE OneView for VMware vCenter Server license for full functionality
- B. Individual systems can be added to HPE OneView for VMware vCenter Server through an ILO management processor
- C. HPE Synergy requires HPE Composer 2 for full functionality of HPE OneView for VMware vCenter Server
- D. Only systems managed using HPE Oneview can use HPE Oneview for VMware vCenter Server functionalities

Answer: A

Explanation:

Question No: 28

Your customer has an HPE Synergy platform deployed and managed using HPE OneView. The customer also has HPE Superdome Flex with RMC deployed They plan to deploy a second nPar and HPE Superdome Flex 280 They plan to manage new components using HPE OneView What must be done to achieve this goal?

- A. The customer must use IL05 to add HPE Superdome Flex systems to HPE OneView
- B. The customer should deploy an HPE OneView appliance for HPE Superdome Flex management
- C. The customer must add a second Rack Management Controller for HPE Superdome Flex 280
- D. The customer has to add HPE Superdome Flex to the HPE OneView used to manage HPE Synergy

Answer: C

Explanation:

Question No: 29

Which statement about manual orchestration during the firmware update is true?

- A. It is supported only for logical enclosures with at least three frames
- B. It provides an ability to select and update one side of the Interconnect topology at a time
- C. It provides the ability to install an older firmware version than currently Installed In the interconnect
- D. It allows all the interconnect modules to be activated manually at the same time.

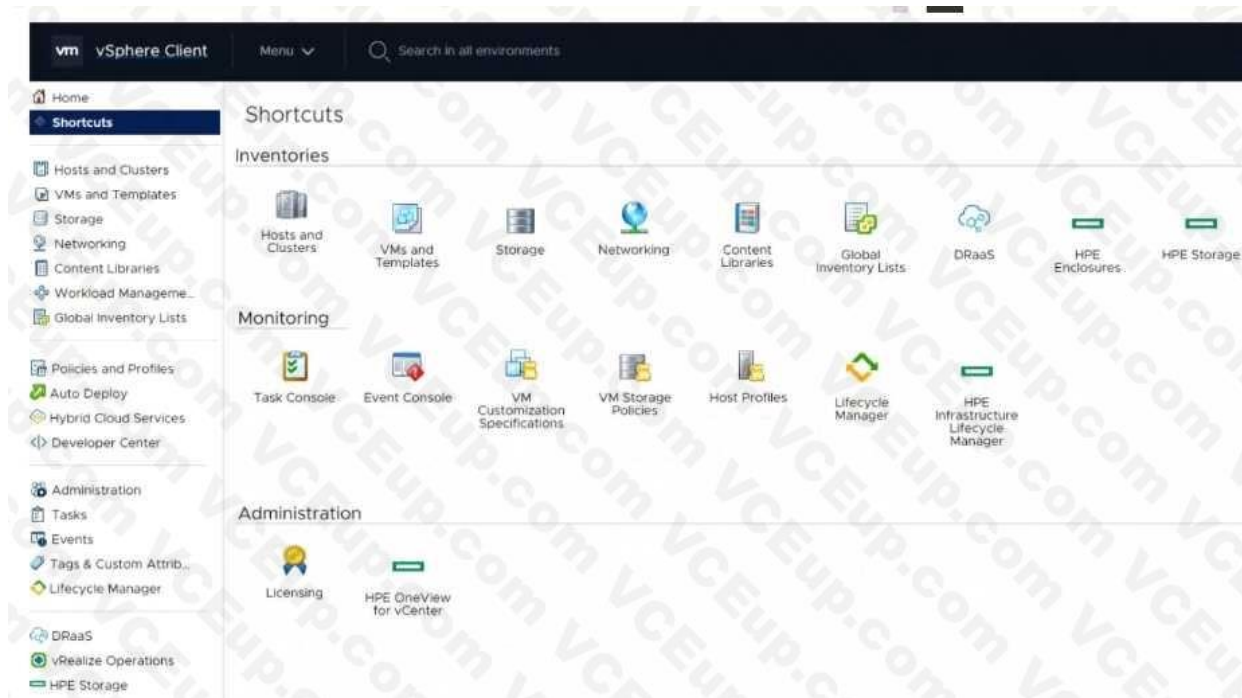
Answer: B

Explanation:

Question No: 30

HOTSPOT

Click the option that will allow you to change the ESXI image used In an OS Deployment Plan.



Answer:



Explanation:

Question No: 31

Your customer reports that they cannot deploy HPE Synergy compute nodes using HPE OneView for VMware vCenter Server (HPE OV4VC).

What should you check during troubleshooting process?

- A. If HPE OneView credentials are added in vCenter Server
- B. If an compute nodes are added to the vCenter Server
- C. If the HPE Oneview instance is integrated with HPE OV4VC.
- D. If vCenter Server is licensed in the HPE Oneview interface

Answer: B

Explanation:

Question No: 32

You need to configure a RoCE network to enable lossless networking for HPE J2000 Flash Enclosure support Which interconnects are required to support this connection? (Select two.)

- A. HPE Virtual Connect SE 40Gb F8 Module for HPE Synergy
- B. HPE Virtual Connect SE 16Gb FC Module for HPE Synergy
- C. HPE Virtual Connect SE 100Gb F32 Module for HPE Synergy
- D. HPE Virtual Connect SE 32Gb FC Module for HPE Synergy
- E. Brocade 16Gb Fibre Channel SAN Switch Module for HPE Synergy
- F. Brocade 32Gb Fibre Channel SAN Switch Module for HPE Synergy

Answer: B, D

Explanation:

Question No: 33

Which statement about the SY480 Gen10 Plus Compute Module is true?

- A. It cannot be mixed with Gen9 compute modules in the same frame.
- B. It supports 8 memory channels and memory DIMMs of up to 256GB.
- C. It only supports NVDIMM Persistent Memory.
- D. It supports "3rd Gen AMO EPYC Server Processors with 64 cores.

Answer: C

Explanation:

Question No: 34

What is a restriction of using a RoCE network?

- A. It is by default configured as an untagged network and cannot be a part of a network set.
- B. It does not support Private VLAN and Multicast VLAN.
- C. it is not supported with HPE Virtual Connect SE 40 GD F8 Module for HPE Synergy.
- D. It does not support smart link and private network features.

Answer: A



Explanation:

Question No: 35

Your customer plans to deploy VMware ESXi 7.0 U2, and they are looking for a hardware platform that will allow them to use up to 16 CPU sockets Which HPE compute system meets the customer requirements?

- A. HPE ProLiant DL580 Gen10
- B. HPE ProLiant OL380 Gen 10 Plus
- C. HPE Synergy 480 Gen10 Plus
- D. HPE Superdome Flex system

Answer: C

Explanation:

Question No: 36

DRAG DROP

Your customer plans to use HPE OneView for VMware vCenter Server to deploy ESXi systems. They created a server profile template that they want to use in HPE OneView.

Put the steps required to configure HPE OneView for VMware vCenter Server on the left into their correct order on the right.



Answer:



Explanation:

Question No: 37

Your customer plans to deploy VMware ESXi 7.0 U2 and they are looking for a hardware platform that will allow them to use up to 24 TB of physical memory.

Which HPE compute system meets this customer's requirements?

- A. HPE ProLiant DL380 Gen 10 Plus
- B. HPE Synergy 480 Gen10 Plus
- C. HPE ProLiant DL560 Gen10

D. HPE Superdome Flex 280

Answer: A

Explanation:

Question No: 38

Which compute node parameters are captured within server hardware type?

A. Number of the CPUs

B. installed operating system

C. Mezzanine card configuration

D. Size of the memory Installed

Answer: B

Explanation:

Question No: 39

Your customer has 6 logical enclosures spanning 18 HPE Synergy frames. The customer needs to add one more logical enclosure based on 5 HPE Synergy frames How will this change impact the customer environment?

A. The customer can add a new logical enclosure to the existing setup because the maximum number of logical enclosures in a single management ring is not reached.

B. The customer has to expand the management ring capacity either by adding HPE Composer 2 modules or adding memory to reach 128GB per module.

C. The customer has to create a new management ring for new logical enclosure because the maximum number of frames in a single management ring is reached.

D. The customer can add a new logical enclosure to an existing setup once all required licenses are added to HPE OneView and associated with the new frames.

Answer: A

Explanation:

Question No: 40

Your customer added a new Ethernet network in HPE Oneview that is used to manage their HPE Synergy platform.

When the customer tries to connect one of the compute nodes to this network through the server profile, this network is not available.

What must be done to fix this issue?

A. Check the Logical Enclosure settings and verify if the maximum number of networks allowed for this LE is reached.

B. To make this network available to use in the server profile, the customer must enable the Smart Link feature within network definition.

C. The newly created network must be added to the uplink set within the LIG, and Logical interconnect configuration must be updated from the LIG.

D. Check within the server profile which server hardware is used and perform the Refresh operation on this compute node to get the latest adapter information.

Answer: C

Explanation:

Question No: 41

Which statement about HPE Apollo 2000 Gen10 Plus platform is true?

- A. It is equipped with HPE Persistent memory by default
- B. It can support a single processor only and up to 4 per chassis
- C. It is fully managed using HPE OneView including all connections
- D. It offers servers with AMD EPYC and Intel Xeon Scalable CPUs

Answer: B

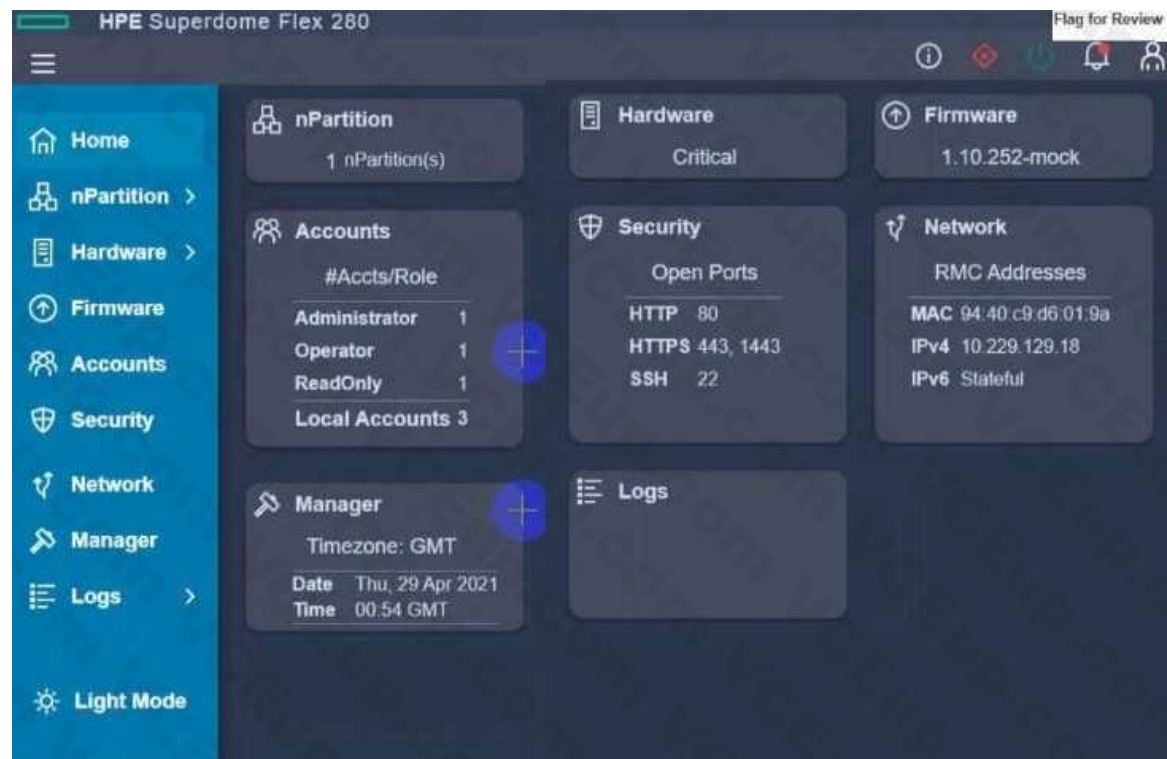
Explanation:

Question No: 42

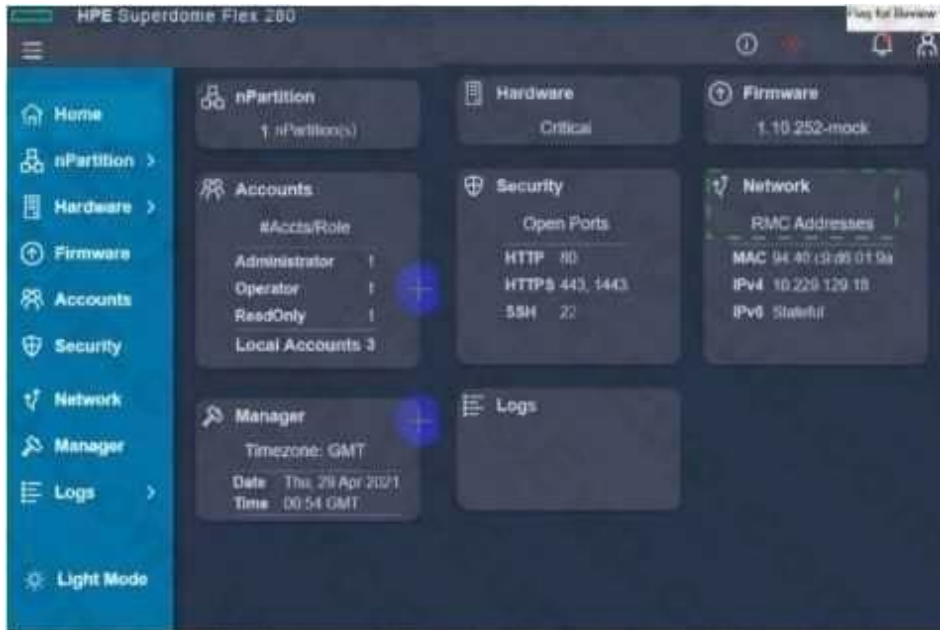
HOTSPOT

After deploying HPE Superdome Flex 280 you need to check Core Analysis Engine (CAE) Log.

Click the appropriate section in the HPE Superdome Flex 280 management interface that will allow you to complete this task.



Answer:



Explanation:

Question No: 43

Which statement about the HPE D3940 storage module is true?

- A. SATA drives requires redundant 10 adapters to be installed in this module
- B. Up to five modules can be installed in a single frame with Gen10 servers
- C. it is configured through CLI available from HPE Synergy console
- D. Only one type of drives (SATA, SAS, SSD) can be installed in each module

Answer: C

Explanation:

Question No: 44

What is one of the benefits of using HPE Composer 2?

- A. HPE Composer 2 has 128GB of memory and 4 AMD CPUs to improve performance of the management system
- B. HPE Composer 2 modules are required to manage HPE virtual Connect SE 100GD F32 Modules for Synergy
- C. The administrator can access an HPE Synergy Composer 2 appliance remotely to perform First Time Setup
- D. A pair of HPE Composer 2 modules can manage 42 frames, compared to 21 frames managed by HPE Composer

Answer: A

Explanation:

Question No: 45

What is a limitation when creating a server profile?

- A. BIOS settings can be changed only when UEFI optimized is selected as boot mode



- B. ILO management is limited to the integration with Active Directory or LDAP
- C. Administrator cannot define more than 8 connections within a server profile
- D. It is not possible to create shared volumes on demand through a server profile

Answer: B

Explanation:

Question No: 46

You modified a logical interconnect group that is used to configure logical interconnects in five different logical enclosures. What will be the impact of that change?

- A. All physical interconnects from affected logical interconnects will be placed in a maintenance mode
- B. All physical interconnects from the affected logical interconnects must be rebooted to activate the new configuration
- C. All logical interconnects configured using this logical interconnect group will report inconsistency
- D. All logical interconnects configured using this logical interconnect group will be automatically updated

Answer: A

Explanation:

Question No: 47

DRAG DROP

Match each HPE Synergy logical component with the definition.

Component	Definition
Enclosure group	Acts as a recipe for creating a group that represents the available networks, uplink sets, and interconnect settings for a set of physical interconnects in a set of enclosures.
Logical enclosure	A single administrative entity that consists of the configuration for a set of interconnects in a single enclosure or a frame link topology.
Logical interconnect	A logical resource that defines a consistent configuration for an enclosure or a set of enclosures making up a logical enclosure.
Logical interconnect group	Contains the configuration intended for a set of physical enclosures.

Answer:



Component	Definition
Logical interconnect group	Acts as a recipe for creating a group that represents the available networks, uplink sets, and interconnect settings for a set of physical interconnects in a set of enclosures.
Logical interconnect	A single administrative entity that consists of the configuration for a set of interconnects in a single enclosure or a frame link topology.
Enclosure group	A logical resource that defines a consistent configuration for an enclosure or a set of enclosures making up a logical enclosure.
Logical enclosure	Contains the configuration intended for a set of physical enclosures.

Explanation:

Question No: 48

Your customer reports that an external FC boot volume for Windows server is visible four times in the Disk Management 1 online and 3 offline.

What should you do to resolve this issue?

- A. Disable deduplication for this volume at the array level
- B. Remove the offline disks using array management tools
- C. Install and configure MPIO on the Windows system
- D. Remove the offline disks using Windows Disk Management

Answer: C

Explanation:

Question No: 49

Your customer plans to setup an HPE Synergy solution based on SY480 Gen10 compute nodes with the following connectivity options - SAS connectivity installed in the first fabric - FC connectivity installed in the second fabric - Ethernet connectivity installed in the third fabric.

Which statement regarding this setup is true?

- A. Each compute node must have at least 768GB of memory installed
- B. Interconnect modules that provide SAS connectivity should be moved to the third fabric
- C. Each interconnect module in each fabric must be properly licensed in HPE OneView
- D. Compute nodes must have a second CPU installed to access the second fabric.

Answer: A

Explanation:

Question No: 50

Your customer wants to add a second HPE Synergy frame to an existing logical enclosure based on a single HPE Synergy frame. The customer wants to use a highly available master setup.



Which procedures should be performed during the expansion process? (Select two.)

- A. Create a new logical interconnect group and enclosure group for two frames setup
- B. Create a new logical enclosure based on both HPE Synergy frames.
- C. Re-parent an existing enclosure group to the new logical interconnect group.
- D. Modify an existing logical interconnect to include second HPE Synergy frame.
- E. Move one of the master modules to the appropriate interconnect bay in the second frame.

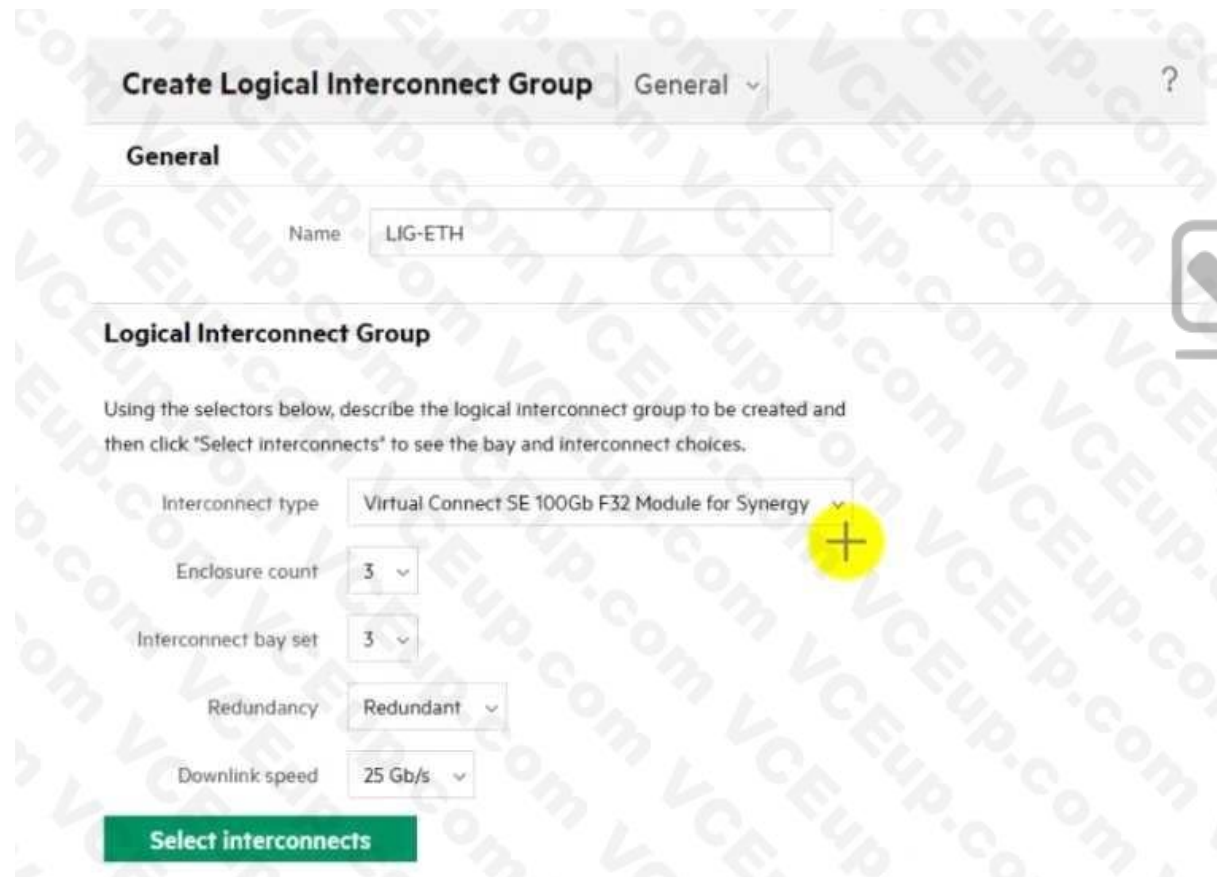
Answer: B, D

Explanation:

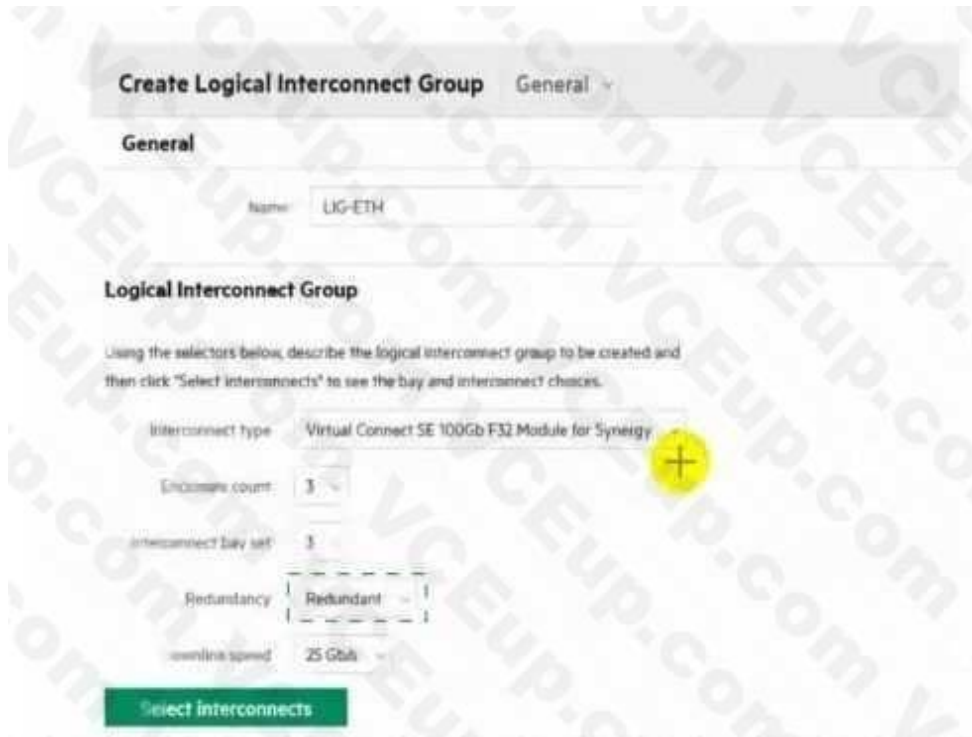
Question No: 51

HOTSPOT

Click the drop-down menu that will allow you to define the location of the master modules within the logical interconnect group.



Answer:



Explanation:

Question No: 52

In the past a customer experienced a networking issue where network ports went down and came back up in quick succession.

Which HPE Virtual Connect SE 100 GD F32 Module for HPE Synergy feature can be configured to disable such ports?

- A. Pause flood protection
- B. sFlow
- C. Storm control
- D. Port flap protection

Answer: B

Explanation:

Question No: 53

Which tool can be used to evaluate the health of an HPE OneView appliance before proceeding with an appliance update.

- A. HPE Composer Maintenance Console
- B. HPE OneView Update Readiness Checker
- C. HPE OneView Global Dashboard
- D. HPE OneView Firmware Compliance Report

Answer: A

Explanation:

Question No: 54

Your customer wants to compare HPE Superdome Flex with HPE Superdome Flex 280.

Which statement about these two systems is true?

- A. Only HPE Superdome Rex 280 can be managed using HPE OneView
- B. Only HPE Superdome Flex supports HPE Persistent Memory
- C. Only HPE Superdome Flex 280 can support multiple nPars
- D. Only HPE Superdome Flex supports 32 sockets and 48TB of memory

Answer: A

Explanation:

Question No: 55

Your customer plans to deploy HPE Superdome Flex and configure two nPars, each based on two chassis Which components must be included in the proposal to meet the customer's needs?

- A. Rack Management Controller for nPar management
- B. HPE Superdome Flex Grid licenses enabling connectivity between chassis
- C. At least Four HPE Persistent Memory DIMMs per nPar
- D. One base chassis and three expansion chassis with licenses

Answer: D

Explanation:

Question No: 56

HOTSPOT

Your customer is implementing an HPE Synergy solution based on three frames.

Click each of the ports that can be used to connect satellite modules.



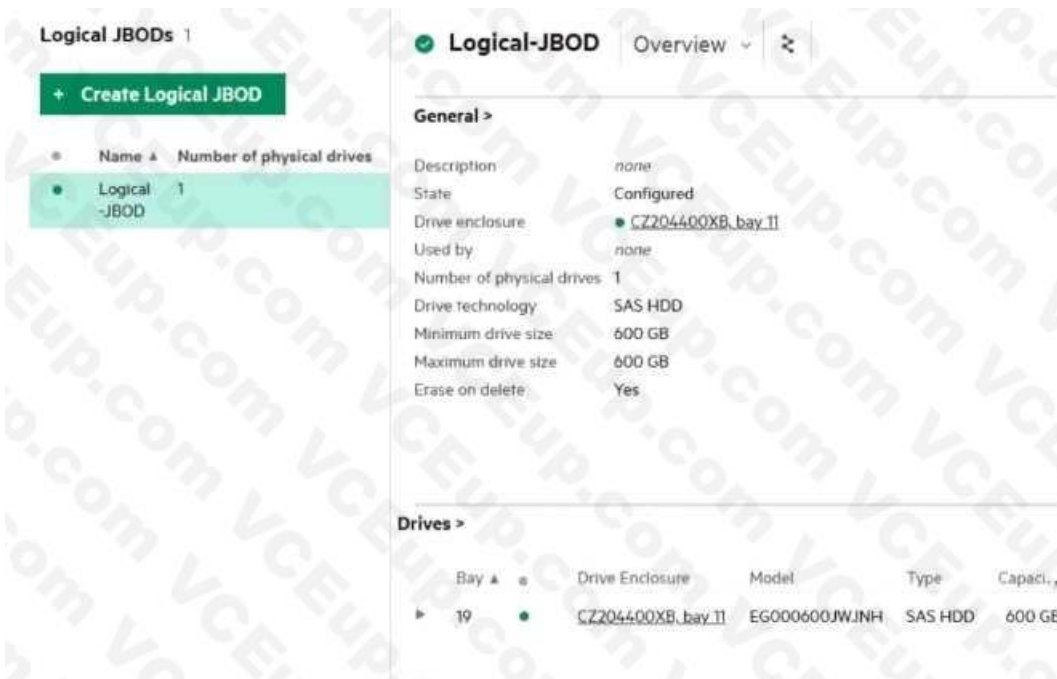
Answer:



Explanation:

Question No: 57

Refer to the exhibit.



Logical JBODs 1

[+ Create Logical JBOD](#)

Name	Number of physical drives
Logical JBOD	1

Logical-JBOD Overview

General >

Description: none
 State: Configured
 Drive enclosure: C7204400XB_bay 11
 Used by: none
 Number of physical drives: 1
 Drive technology: SAS HDD
 Minimum drive size: 600 GB
 Maximum drive size: 600 GB
 Erase on delete: Yes

Drives >

Bay	Drive Enclosure	Model	Type	Capacity
19	C7204400XB_bay 11	EG000600JWJNH	SAS HDD	600 GB



Which statement about this logical JBOD is true?

- A. This logical JBOD can be connected to multiple systems to formulate a shared datastore.
- B. After deleting this logical JBOD drives will be blocked for 12h in case this JBOD must be re-created
- C. After deleting this logical JBOD, its drives will not be available until a clean-up procedure is done
- D. This logical JBOD can be presented to the compute nodes in a different frame.

Answer: C

Explanation:

Question No: 58

DRAG DROP

Match HPE SimpliVity team with the definition.

Term	Definition
Arbiter	Non-hyperconverged servers that can exist in an HPE SimpliVity environment and provide additional compute capacity while consuming the storage provided by the hyperconverged nodes.
Compute node	Provides centralized management and events end-point for vCenter.
Intelligent Workload Optimizer	Integrates with VMware Distributed Resources Scheduler to ensure optimal placement of the VM compute resources.
Management Virtual Controller	Facilitates communication between nodes and resolves state conflicts to ensure service continuity.

Answer:

Term	Definition
Arbiter	Non-hyperconverged servers that can exist in an HPE SimpliVity environment and provide additional compute capacity while consuming the storage provided by the hyperconverged nodes.
Compute node	Provides centralized management and events end-point for vCenter.
Management Virtual Controller	Integrates with VMware Distributed Resources Scheduler to ensure optimal placement of the VM compute resources.
Intelligent Workload Optimizer	Facilitates communication between nodes and resolves state conflicts to ensure service continuity.

Explanation:

Question No: 59

DRAG DROP

Match each HPE OneView network type with its definition.

Network Type	Definition
Internal network	A network that contains multiple networks on a single uplink set that allows your customer to share uplinks with those networks.
Tagged network	A network in which any tagged packets are dropped and forwarding is done by a MAC address.
Tunnel network	A network with a dedicated set of uplink ports used to pass a group of VLANs without changing the VLAN tags.
Untagged network	A network that does not utilize any uplink ports and is used for communication between servers in the same frame.

Answer:

Network Type	Definition
Untagged network	A network that contains multiple networks on a single uplink set that allows your customer to share uplinks with those networks.
Tagged network	A network in which any tagged packets are dropped and forwarding is done by a MAC address.
Tunnel network	A network with a dedicated set of uplink ports used to pass a group of VLANs without changing the VLAN tags.
Internal network	A network that does not utilize any uplink ports and is used for communication between servers in the same frame.

Explanation:



Question No: 60

Your customer plans to use HPE Primera to boot HPE Synergy compute nodes. They currently have two HPE Virtual Connect SE 100Gb F32 Module for Synergy modules installed in the frame. The customer wants to use FC as a storage access protocol What must be done to complete this task?

- A. Enable FC primary and secondary boot on the modules through the HPE OneView interface
- B. FC connectivity on the modules should be enabled through the service console by disabling FCoE.
- C. Add FC upgrade licenses in HPE OneView that will enable FC connectivity for the modules
- D. Enter both modules into a maintenance mode, then enable FC connectivity through CLI

Answer: B

Explanation:

